

DAFTAR PUSTAKA

- Abdullah, N., Ishak, N. F. M., & Shahida, W. S. W. (2019). in-Vitro Antibacterial Activities of Ajwa Date Fruit (*Phoenix Dactylifera* L.) Extract Against Selected Gram-Negative Bacteria Causing Gastroenteritis. *International Journal of Pharmaceutical Sciences and Research*, 10(6), 2951. [https://doi.org/10.13040/IJPSR.0975-8232.10\(6\).2951-55](https://doi.org/10.13040/IJPSR.0975-8232.10(6).2951-55)
- Adomaityte, J., Mullin, G. E., & Dobs, A. S. (2014). Anti-aging diet and supplements: Fact or fiction? *Nutrition in Clinical Practice*, 29(6), 844–846. <https://doi.org/10.1177/0884533614546889>
- Aldebasi, Y. H., Aly, S. M., & Rahmani, A. H. (2013). Therapeutic implications of curcumin in the prevention of diabetic retinopathy via modulation of anti-oxidant activity and genetic pathways. In *International Journal of Physiology, Pathophysiology and Pharmacology* (Vol. 5, Issue 4, pp. 194–202). www.ijppp.org
- Alqarni, M. M. M., Osman, M. A., Al-Tamimi, D. S., Gasseem, M. A., Al-Khalifa, A. S., Al-Juhaimi, F., & Mohamed Ahmed, I. A. (2019). Antioxidant and antihyperlipidemic effects of Ajwa date (*Phoenix dactylifera* L.) extracts in rats fed a cholesterol-rich diet. *Journal of Food Biochemistry*, 43(8), 1–12. <https://doi.org/10.1111/jfbc.12933>
- Antonioli, L., Pellegrini, C., Fornai, M., Tirota, E., Gentile, D., Benvenuti, L., Giron, M. C., Caputi, V., Marsilio, I., Orso, G., Bernardini, N., Segnani, C., Ippolito, C., Csóka, B., Németh, Z. H., Haskó, G., Scarpignato, C.,

- Corrado Blandizzi, & Colucci, R. (2017). Colonic motor dysfunctions in a mouse model of high-fat diet-induced obesity: an involvement of A₂B adenosine receptors. *Purinergic Signalling*, 13, 497–510. <https://doi.org/10.1007/s11302-017-9577-0>
- Assirey, E. A. R. (2015). Nutritional composition of fruit of 10 date palm (*Phoenix dactylifera* L.) cultivars grown in Saudi Arabia . *Journal of Taibah University for Science*, 9(1), 75–79. <https://doi.org/10.1016/j.jtusci.2014.07.002>
- Attah, A. F., O'Brien, M., Koehbach, J., Sonibare, M. A., Moody, J. O., Smith, T. J., & Gruber, C. W. (2012). Uterine contractility of plants used to facilitate childbirth in Nigerian ethnomedicine. *Journal of Ethnopharmacology*, 143(1), 377–382. <https://doi.org/10.1016/j.jep.2012.06.042>
- Azizan Samad, M., Hajar Hashim, S., Simarani, K., & Syafawati Yaacob, J. (2016). *molecules Antibacterial Properties and Effects of Fruit Chilling and Extract Storage on Antioxidant Activity, Total Phenolic and Anthocyanin Content of Four Date Palm (Phoenix dactylifera) Cultivars*. <https://doi.org/10.3390/molecules21040419>
- Balitbangkes. (2018). Laporan_Nasional_RKD2018_FINAL.pdf. In *Badan Penelitian dan Pengembangan Kesehatan* (p. 198). http://labdata.litbang.kemkes.go.id/images/download/laporan/RKD/2018/Laporan_Nasional_RKD2018_FINAL.pdf
- Belkaid, Y., & Hand, T. W. (2014). Role of the microbiota in immunity and inflammation. *Cell*, 157(1), 121–141.

<https://doi.org/10.1016/j.cell.2014.03.011>

Bibbò, S., Ianiro, G., Giorgio, V., Scaldaferrri, F., Masucci, L., Gasbarrini, A., & Cammarota, G. (2016). The role of diet on gut microbiota composition. *European Review for Medical and Pharmacological Sciences*, 20(22), 4742–4749.

Binns, N. (ILSI E. (2013). *PROBIOTICS, PREBIOTICS AND THE GUT MICROBIOTA*. International Life Sciences Institute.

Blandino, G., Inturri, R., Lazzara, F., Di Rosa, M., & Malaguarnera, L. (2016). Impact of gut microbiota on diabetes mellitus. *Diabetes and Metabolism*, 42(5), 303–315.
<https://doi.org/10.1016/j.diabet.2016.04.004>

Buford, T. W. (2017). Microbiome. *Biomed Central*, 5(80).
<https://doi.org/10.1186/s40168-017-0296-0>

Burt Solorzano, C. M., & McCartney, C. R. (2010). REPRODUCTION FOCUS REVIEW Focus on Obesity Obesity and the pubertal transition in girls and boys. *Reproduction*, 140, 399–410.
<https://doi.org/10.1530/REP-10-0119>

Cani, P D, Neyrinck, A. M., Fava, F., Knauf, C., Burcelin, R. G., Tuohy, K. M., Gibson, G. R., & Delzenne, N. M. (2007). *Selective increases of bifidobacteria in gut microflora improve high-fat-diet-induced diabetes in mice through a mechanism associated with endotoxaemia-OFS high-fat oligofructose LPS lipopolysaccharide MIB mouse intestinal bacteria OFS oligofructose spp. species.*
<https://doi.org/10.1007/s00125-007-0791-0>

- Cani, Patrice D, Amar, J., Iglesias, M. A., Poggi, M., Knauf, C., Bastelica, D., Neyrinck, A. M., Fava, F., Tuohy, K. M., Chabo, C., Lie Wage, A., Delmé, E., Atrice Cousin, B., Sulpice, T., Chamontin, B., Ferrière, J., Tanti, J.-F., Gibson, G. R., Casteilla, L., ... My Burcelin, R. (2007). Metabolic Endotoxemia Initiates Obesity and Insulin Resistance. *Diabetes*, 56, 1761–1772. <https://doi.org/10.2337/db06-1491>
- Cani, Patrice D, Bibiloni, R., Knauf, C., Lie Wage, A., Neyrinck, A. M., Delzenne, N. M., & My Burcelin, R. (2008). Changes in Gut Microbiota Control Metabolic Endotoxemia-Induced Inflammation in High-Fat Diet-Induced Obesity and Diabetes in Mice. *Diabetes*, 57, 1470–1481. <https://doi.org/10.2337/db07-1403>
- Cani, Patrice D, Osto, M., Geurts, L., & Everard, A. (2012). Gut Microbes Involvement of gut microbiota in the development of low-grade inflammation and type 2 diabetes associated with obesity Special Focus Review. *Gut Microbes*, 3, 279–288. <https://doi.org/10.4161/gmic.19625>
- Clark, R. I., & Walker, D. W. (2018). Role of gut microbiota in aging-related health decline: insights from invertebrate models. *Cell. Mol. Life Sci*, 75, 93–101. <https://doi.org/10.1007/s00018-017-2671-1>
- Clarke, G., Stilling, R. M., Kennedy, P. J., Stanton, C., Cryan, J. F., Dinan, T. G., & Pharmabiotic Centre, A. (2014). Minireview: Gut Microbiota: The Neglected Endocrine Organ. *Molecular Endocrinology*, 28, 1221–1238. <https://doi.org/10.1210/me.2014-1108>
- Clarke, S. F., Murphy, E. F., Nilaweera, K., Ross, P. R., Shanahan, F.,

- Cotter, P. W., & Cotter, P. D. (2012). The gut microbiota and its relationship to diet and obesity: New insights. *Gut Microbes*, 3(3), 186–202. <https://doi.org/10.4161/gmic.20168>
- Clemente, J. C., Ursell, L. K., Parfrey, L. W., & Knight, R. (2012). The impact of the gut microbiota on human health: An integrative view. *Cell*, 148(6), 1258–1270. <https://doi.org/10.1016/j.cell.2012.01.035>
- D'Argenio, V., & Salvatore, F. (2015). The role of the gut microbiome in the healthy adult status. *Clinica Chimica Acta*, 451, 97–102. <https://doi.org/10.1016/j.cca.2015.01.003>
- D'Aversa, F., Tortora, A., Ianiro, G., Ponziani, F. R., Annicchiarico, B. E., & Gasbarrini, A. (2013). Gut microbiota and metabolic syndrome. *Internal and Emergency Medicine*, 8(SUPPL. 1), 11–15. <https://doi.org/10.1007/s11739-013-0916-z>
- Derrien, M., Vaughan, E. E., Plugge, C. M., & De Vos, W. M. (2004). *Akkermansia muciniphila* gen. nov., sp. nov., a human intestinal mucin-degrading bacterium. *International Journal of Systematic and Evolutionary Microbiology*, 54, 1469–1476. <https://doi.org/10.1099/ijs.0.02873-0>
- Dewiani, K. (2015). Antioksidan pada Kurma sebagai Terapi Alternatif Kanker. In *SIMPOSIUM DAN WORKSHOP NASIONAL* (pp. 105–109).
- Eid, N., Enani, S., Walton, G., Corona, G., Costabile, A., Gibson, G., Rowland, I., & Spencer, J. P. E. (2021). The impact of date palm fruits and their component polyphenols, on gut microbial ecology, bacterial metabolites and colon cancer cell proliferation. *Journal of Nutritional*

Science, 3, 1–9. <https://doi.org/10.1017/jns.2014.16>

- Fawzi, M; Sharif Hossain, ABM; Awadelkareem, AM; Ibrahim, N. (2018). Nutritional Assessment Of Different Date Fruits (Phoenix Dactylifera L.) Varieties Cultivated In Hail Province, Saudi Arabia. *Bioscience Biotechnology Research Communications*, 11(2), 263–269. <https://doi.org/10.21786/bbrc/11.2/11>
- Fitria, L., & Sarto, M. (2014). Profil Hematologi Tikus (*Rattus norvegicus* Berkenhout, 1769) Galur Wistar Jantan dan Betina Umur 4, 6, dan 8 Minggu. *Biogenesis Jurnal Ilmiah Biologi*, 2(2), 94–100.
- Flint, H. J., Scott, K. P., Duncan, S. H., Louis, P., & Forano, E. (2012). Microbial degradation of complex carbohydrates in the gut. *Gut Microbes*, 289–306. <https://doi.org/10.4161/gmic.19897>
- Forslund, K., Hildebrand, F., Nielsen, T., Falony, G., Le Chatelier, E., Sunagawa, S., Prifti, E., Vieira-Silva, S., Gudmundsdottir, V., Krogh Pedersen, H., Arumugam, M., Kristiansen, K., Yvonne Voigt, A., Vestergaard, H., Hercog, R., Igor Costea, P., Roat Kultima, J., Li, J., Jørgensen, T., ... Pedersen, O. (2015). Disentangling type 2 diabetes and metformin treatment signatures in the human gut microbiota. *Nature*, 528(7581), 262–266. <https://doi.org/10.1038/nature15766>
- Getz, GS; Reardon, A. (2012). Animal Models of Atherosclerosis. *Arterioscler Thromb Vasc Biol*, 1104–1115.
- Graf, D., Cagno, R. Di, Fåk, F., Flint, H. J., Nyman, M., Saarela, M., & Watzl, B. (2015). *Contribution of diet to the composition of the human gut microbiota* [View supplementary material.](#)

<https://doi.org/10.3402/mehd.v26.26164>

Gupta, S. K., Kumar, B., Nag, T. C., Agrawal, S. S., Agrawal, R., Agrawal, P., Saxena, R., & Srivastava, S. (2011). Curcumin prevents experimental diabetic retinopathy in rats through its hypoglycemic, antioxidant, and anti-inflammatory mechanisms. *Journal of Ocular Pharmacology and Therapeutics*, 27(2), 123–130.

<https://doi.org/10.1089/jop.2010.0123>

Hamad, I., Abdelgawad, H., Al Jaouni, S., Zinta, G., Asard, H., Hassan, S., Hegab, M., Hagagy, N., & Selim, S. (2015). Metabolic analysis of various date palm fruit (*Phoenix dactylifera* L.) cultivars from Saudi Arabia to assess their nutritional quality. *Molecules*, 20(8), 13620–13641.

<https://doi.org/10.3390/MOLECULES200813620>

Hariri, N., & Thibault, L. (2010). High-fat diet-induced obesity in animal models. *Nutrition Research Reviews*, 23(2), 270–299.

<https://doi.org/10.1017/S0954422410000168>

Hasan, M., & Mohieldein, A. (2016). *Antioxidative Activities of Saudi Date Seed Extract on Diabetic Rats Journal of Clinical and Diagnostic Research* (Vol. 10, Issue 3). www.jcdr.net

He, C., Shan, Y., & Song, W. (2015). Targeting gut microbiota as a possible therapy for diabetes. *Nutrition Research*, 35(5), 361–367.

<https://doi.org/10.1016/j.nutres.2015.03.002>

Hjorth, M. F., Roager, H. M., Larsen, T. M., Poulsen, S. K., Licht, T. R., Bahl, M. I., Zohar, Y., & Astrup, A. (2018). Pre-treatment microbial Prevotella-to-Bacteroides ratio, determines body fat loss success during a 6-

- month randomized controlled diet intervention. *International Journal of Obesity*, 42, 580–583. <https://doi.org/10.1038/ijo.2017.220>
- Huffman, D. M., & Barzilai, N. (2009). Role of visceral adipose tissue in aging. *Biochim Biophys*, 1790(10), 1117–1123. <https://doi.org/10.1016/j.bbagen.2009.01.008>.Role
- Johnson, M. (2012). *Laboratory Mice and Rats*. Labome The World of Laboratories. <https://www.labome.com/method/Laboratory-Mice-and-Rats.html>
- Jura, M., & Kozak, L. P. (2016). Obesity and related consequences to ageing. *AGE*, 23. <https://doi.org/10.1007/s11357-016-9884-3>
- Kau, A. L., Ahern, P. P., Griffin, N. W., Goodman, A. L., & Gordon, J. I. (2011). Human nutrition, the gut microbiome and the immune system. *Nature*, 474(7351), 327–336. <https://doi.org/10.1038/nature10213>
- Khalid, S., Khalid, N., Khan, R. S., Ahmed, H., & Ahmad, A. (2017). A review on chemistry and pharmacology of Ajwa date fruit and pit. *Trends in Food Science and Technology*, 63, 60–69. <https://doi.org/10.1016/j.tifs.2017.02.009>
- Khan, F., Ahmed, F., Pushparaj, P. N., Abuzenadah, A., Kumosani, T., Barbour, E., AlQahtani, M., & Gauthaman, K. (2016). Ajwa Date (*Phoenix dactylifera* L.) extract inhibits human breast adenocarcinoma (MCF7) cells in vitro by inducing apoptosis and cell cycle arrest. *PLoS ONE*, 11(7), 1–17. <https://doi.org/10.1371/journal.pone.0158963>
- Kim, K.-A., Gu, W., Lee, I.-A., Joh, E.-H., & Kim, D.-H. (n.d.). *High Fat Diet-Induced Gut Microbiota Exacerbates Inflammation and Obesity in Mice*

via the TLR4 Signaling Pathway.

<https://doi.org/10.1371/journal.pone.0047713>

Kim, K.-A., Jeong, J.-J., Yoo, S.-Y., & Kim, D.-H. (2016). Gut microbiota lipopolysaccharide accelerates inflamm-aging in mice. *BMC Microbiology*, 16(9). <https://doi.org/10.1186/s12866-016-0625-7>

Kim, S., & Jazwinski, S. M. (2018). The Gut Microbiota and Healthy Aging: A Mini-Review. *Gerontology*, 64(6), 513–520. <https://doi.org/10.1159/000490615>

Kusumawati. (2004). *Bersahabat dengan Hewan Coba*. Gadjah Mada University Press.

Landete, J. M., Gaya, P., Rodríguez, E., Langa, S., Peirotén, Á., Medina, M., & Arqués, J. L. (2017). Probiotic Bacteria for Healthier Aging: Immunomodulation and Metabolism of Phytoestrogens. *BioMed Research International*, 2017. <https://doi.org/10.1155/2017/5939818>

Lee, J.-Y., Bae, E., Kim, H. Y., Lee, K.-M., Yoon, S. S., & Lee, D.-C. (2021). *High-Fat-Diet-Induced Oxidative Stress Linked to the Increased Colonization of Lactobacillus sakei in an Obese Population*. <https://doi.org/10.1128/Spectrum.00074-21>

Li, J., Wu, T., Li, N., Wang, X., Chen, G., & Lyu, X. (2019). Bilberry anthocyanin extract promotes intestinal barrier function and inhibits digestive enzyme activity by regulating the gut microbiota in aging rats. *Food and Function*, 10(1), 333–343. <https://doi.org/10.1039/c8fo01962b>

Li, X., Watanabe, K., & Kimura, I. (2017). Gut microbiota dysbiosis drives

and implies novel therapeutic strategies for diabetes mellitus and related metabolic diseases. In *Frontiers in Immunology* (Vol. 8, Issue DEC, p. 1882). <https://doi.org/10.3389/fimmu.2017.01882>

Lozupone, C. A., Stombaugh, J. I., Gordon, J. I., Jansson, J. K., & Knight, R. (2012). Diversity, stability and resilience of the human gut microbiota. *Nature*, 489(7415), 220–230. <https://doi.org/10.1038/nature11550>.Diversity

Magne, F., Gotteland, M., Gauthier, L., Zazueta, A., Pesoa, S., Navarrete, P., & Balamurugan, R. (2020). The Firmicutes/Bacteroidetes Ratio: A Relevant Marker of Gut Dysbiosis in Obese Patients? *Nutrients*, 12(1474). <https://doi.org/10.3390/nu12051474>

Mallhi, T. H., Qadir, M. I., Ali, M., Ahmad, B., Khan, Y. H., & Atta-Ur-Rehman. (2014). Ajwa date (*Phoenix dactylifera*): An emerging plant in pharmacological research. *Pakistan Journal of Pharmaceutical Sciences*, 27(3), 607–616.

Mangiola, F., Nicoletti, A., Gasbarrini, A., & Ponziani, F. R. (2018). Gut microbiota and aging. *European Review for Medical and Pharmacological Sciences*, 22(21), 7404–7413. <https://doi.org/10.26355/eurrev-201811-16280>

Mariat, D., Firmesse, O., Levenez, F., Guimarães, V. D., Sokol, H., Doré, J., Corthier, G., & Furet, J.-P. (2009). *The Firmicutes/Bacteroidetes ratio of the human microbiota changes with age.* <https://doi.org/10.1186/1471-2180-9-123>

Marques, C., Meireles, M., Norberto, S., Leite, J., Freitas, J., & Pestana, D.

(2016). *High-fat diet-induced obesity Rat model: a comparison between Wistar and Sprague-Dawley Rat* *fat diet-induced obesity Rat model: a comparison between High-fat diet-induced obesity Rat model: a comparison between Wistar and Sprague-Dawley Rat*. 5(1), 11–21. <https://doi.org/10.1080/21623945.2015.1061723>

Michael, H. N., Salib, J. Y., & Eskander, E. F. (2013). Bioactivity of diosmetin glycosides isolated from the epicarp of date fruits, *Phoenix dactylifera*, on the biochemical profile of alloxan diabetic male rats. *Phytotherapy Research*, 27(5), 699–704. <https://doi.org/10.1002/ptr.4777>

Mikami, K., Kimura, M., & Takahashi, H. (2012). Influence of Maternal Bifidobacteria on the Development of Gut Bifidobacteria in Infants. *Pharmaceuticals*, 5, 629–642. <https://doi.org/10.3390/ph5060629>

Million, M., Maraninchi, M., Henry, M., Armougom, F., Richet, H., Carrieri, P., Valero, R., Raccach, D., Vialettes, B., & Raoult, D. (2012). Obesity-associated gut microbiota is enriched in *Lactobacillus reuteri* and depleted in *Bifidobacterium animalis* and *Methanobrevibacter smithii*. *International Journal of Obesity*, 36, 817–825. <https://doi.org/10.1038/ijo.2011.153>

Muñoz-Garach, A., Diaz-Perdigones, C., & Tinahones, F. J. (2016). Gut microbiota and type 2 diabetes mellitus. *Endocrinología y Nutrición*, 63(10), 560–568. <https://doi.org/10.1016/j.endonu.2016.07.008>

Murphy, E. F., Cotter, P. D., Healy, S., Marques, T. M., O'Sullivan, O., Fouhy, F., Clarke, S. F., O'Toole, P. W., Quigley, E. M., Stanton, C., Ross, P. R., O'Doherty, R. M., & Shanahan, F. (2010). Composition

and energy harvesting capacity of the gut microbiota: Relationship to diet, obesity and time in mouse models. *Gut*, 59(12), 1635–1642. <https://doi.org/10.1136/gut.2010.215665>

Nagpal, R., Mainali, R., Ahmadi, S., Wang, S., Singh, R., Kavanagh, K., Kitzman, D. W., Kushugulova, A., Marotta, F., & Yadav, H. (2018). Gut microbiome and aging: Physiological and mechanistic insights. *Nutrition and Healthy Aging*, 4, 267–285. <https://doi.org/10.3233/NHA-170030>

Ngatidjan. (2006). *Metode Laboratorium dalam Toksikologi*. Universitas Gadjah Mada.

P2PTM Kemenkes RI. (2020). *Pola Makan yang Tidak Sehat Menjadi Penyebab Obesitas - Direktorat P2PTM*. <http://p2ptm.kemkes.go.id/infographic-p2ptm/obesitas/pola-makan-yang-tidak-sehat-menjadi-penyebab-obesitas>

Pendyala, S., Walker, J. M., & Holt, P. R. (2012). A High-Fat Diet Is Associated With Endotoxemia That Originates From the Gut. *Gastroenterology*, 142(5), 1100–1101. <https://doi.org/10.1053/j.gastro.2012.01.034>

Pujari, R. R., Vyawahare, N. S., & Kagathara, V. G. (2011). Evaluation of antioxidant and neuroprotective effect of date palm (Phoenix dactylifera L.) against bilateral common carotid artery occlusion in rats. *Indian Journal of Experimental Biology*, 49(8), 627–633.

Rahmani, A. H., Aly, S. M., Ali, H., Babiker, A. Y., Srikar, S., & Amjad, A. (2014). Therapeutic effects of date fruits (Phoenix dactylifera) in the

prevention of diseases via modulation of anti-tumour activity. *Int J Clin Exp Med*, 7(3), 483–491.

Sani, I. H., Bakar, N. H. A., Rohin, M. A. K., Suleiman, I., Umar, M. I., & Mohamad, N. (2015). Phoenix dactylifera Linn as a potential novel anti-oxidant in treating major opioid toxicity. *Journal of Applied Pharmaceutical Science*, 5(8), 167–172.

<https://doi.org/10.7324/JAPS.2015.50826>

Scott, K. P., Gratz, S. W., Sheridan, P. O., Flint, H. J., & Duncan, S. H. (2013). The influence of diet on the gut microbiota. *Pharmacological Research*, 69(1), 52–60. <https://doi.org/10.1016/j.phrs.2012.10.020>

Sears, B., & Perry, M. (2015). The role of fatty acids in insulin resistance. *Lipids in Health and Disease*, 14(121), 1–9.

<https://doi.org/10.1186/s12944-015-0123-1>

Sender, R., Fuchs, S., & Milo, R. (2016). *Revised Estimates for the Number of Human and Bacteria Cells in the Body*.

<https://doi.org/10.1371/journal.pbio.1002533>

Sircana, A., Framarin, L., Leone, N., Berrutti, M., Castellino, F., Parente, R., De Michieli, F., Paschetta, E., & Musso, G. (2018). Altered Gut Microbiota in Type 2 Diabetes: Just a Coincidence? *Current Diabetes Reports*, 18(10). <https://doi.org/10.1007/s11892-018-1057-6>

Spohn, S. N., & Young, V. B. (2018). Gastrointestinal Microbial Ecology With Perspectives on Health and Disease. In *Physiology of the Gastrointestinal Tract: Sixth Edition* (Sixth Edit, Vols. 1–2, Issue 1).

Elsevier Inc. <https://doi.org/10.1016/B978-0-12-809954-4.00032-3>

- Statista. (2020). *Obesity and Overweight - Statistics & Facts*.
- Swanson, H. I. (2015). Special section on drug metabolism and the microbiome - Commentary drug metabolism by the host and gut microbiota: A partnership or rivalry? *Drug Metabolism and Disposition*, 43(10), 1499–1504. <https://doi.org/10.1124/dmd.115.065714>
- Talhok, R. S., Karam, C., Fostok, S., El-Jouni, W., & Barbour, E. K. (2007). Anti-inflammatory bioactivities in plant extracts. *Journal of Medicinal Food*, 10(1), 1–10. <https://doi.org/10.1089/jmf.2005.055>
- Tam, B. T., Morais, J. A., & Santosa, S. (2020). Obesity and ageing: Two sides of the same coin. *Obesity Reviews*, 21(4), 1–21. <https://doi.org/10.1111/obr.12991>
- Tchkonia, T., Morbeck, D. E., Von Zglinicki, T., Van Deursen, J., Lustgarten, J., Scrable, H., Khosla, S., Jensen, M. D., & Kirkland, J. L. (2010). Fat tissue, aging, and cellular senescence. *Aging Cell*, 9(5), 667–684. <https://doi.org/10.1111/j.1474-9726.2010.00608.x>
- Thomas, C., Pellicciari, R., Pruzanski, M., Auwerx, J., & Schoonjans, K. (2008). Targeting bile-acid signalling for metabolic diseases. *Nature Reviews Drug Discovery*, 7(8), 678–693. <https://doi.org/10.1038/nrd2619>
- Tremaroli, V., & Bäckhed, F. (2012). Functional interactions between the gut microbiota and host metabolism. *Nature*, 489(7415), 242–249. <https://doi.org/10.1038/nature11552>
- Turnbaugh, P. J., Ridaura, V. K., Faith, J. J., Rey, F. E., & Gordon, J. I. (2009). The Effect of Diet on the Human Gut Microbiome: A

- Metagenomic Analysis in Humanized Gnotobiotic Mice. *Science Translational Medicine*, 1(6), 6–14.
<https://doi.org/10.1126/scitranslmed.3000322>
- Tzanetakou, I. P., Katsilambros, N. L., Benetos, A., Mikhailidis, D. P., & Perrea, D. N. (2012). “Is obesity linked to aging?”. Adipose tissue and the role of telomeres. *Ageing Research Reviews*, 11(2), 220–229.
<https://doi.org/10.1016/j.arr.2011.12.003>
- Van Den Broek, L. A. M., Hinz, S. W. A., Beldman, G., Vincken, J. P., & Voragen, A. G. J. (2008). Bifidobacterium carbohydrases-their role in breakdown and synthesis of (potential) prebiotics. *Molecular Nutrition and Food Research*, 52(1), 146–163.
<https://doi.org/10.1002/mnfr.200700121>
- Vayalil, P. K. (2012). Date fruits (Phoenix dactylifera Linn): An emerging medicinal food. *Critical Reviews in Food Science and Nutrition*, 52(3), 249–271. <https://doi.org/10.1080/10408398.2010.499824>
- Vembu, S., Sivanasan, D., & Prasanna, G. (2012). Effect of Phoenix dactylifera on high fat diet induced obesity. *Journal of Chemical and Pharmaceutical Research*, 1, 348–352.
- Veza, T., Canet, F., de Marañón, A. M., Bañuls, C., Rocha, M., & Víctor, V. M. (2020). Phytosterols: Nutritional health players in the management of obesity and its related disorders. In *Antioxidants* (Vol. 9, Issue 12, pp. 1–20). <https://doi.org/10.3390/antiox9121266>
- Vrieze, A., Holleman, F., Zoetendal, E. G., De Vos, W. M., Hoekstra, J. B. L., & Nieuwdorp, M. (2009). The environment within: how gut

- microbiota may influence metabolism and body composition. *Diabetologia*, 53, 606–613. <https://doi.org/10.1007/s00125-010-1662-7>
- Wang, H., Hong, T., Li, N., Zang, B., Wu, X., Hong, T., Li, N., Zang, B., & Wu, X. (2018). Soluble dietary fiber improves energy homeostasis in obese mice by remodeling the gut microbiota. *Biochemical and Biophysical Research Communications*. <https://doi.org/10.1016/j.bbrc.2018.02.017>
- Weickert, M. O., & Pfeiffer, A. F. H. (2018). Impact of dietary fiber consumption on insulin resistance and the prevention of type 2 diabetes. *Journal of Nutrition*, 148(1), 7–12. <https://doi.org/10.1093/jn/nxx008>
- Weiss, G. A., & Henet, T. (2017). Mechanisms and consequences of intestinal dysbiosis. *Cellular and Molecular Life Sciences*, 74(16), 2959–2977. <https://doi.org/10.1007/s00018-017-2509-x>
- Wolfensohn, S., & Lloyd, M. (2008). Handbook of Laboratory Animal Management and Welfare. *John Wiley & Sons*.
- World Health Organization. (2021). *Obesity and overweight*. <https://www.who.int/news-room/fact-sheets/detail/obesity-and-overweight>
- Wu, G. D., Chen, J., Hoffmann, C., Bittinger, K., Chen, Y. Y., Keilbaugh, S. A., Bewtra, M., Knights, D., Walters, W. A., Knight, R., Sinha, R., Gilroy, E., Gupta, K., Baldassano, R., Nessel, L., Li, H., Bushman, F. D., & Lewis, J. D. (2011). Linking long-term dietary patterns with gut microbial enterotypes. *Science*, 334(6052), 105–108.

<https://doi.org/10.1126/science.1208344>

Zen, A. T. H., Pertiwi, D., & Chodijah. (2013). Pengaruh Pemberian Sari Kurma (*Phoenix dactylifera*) terhadap Kadar Hemoglobin. *Sains Medika*, 5 (1), 17–19.

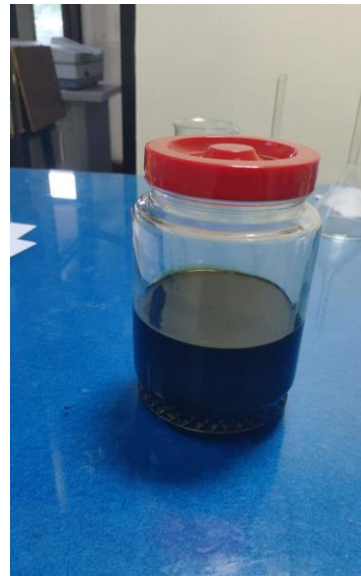
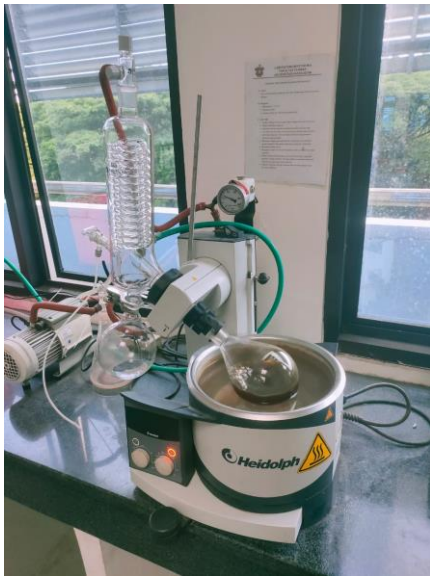
Zhang, C.-R., Aldosari, S. A., Vidyasagar, P. S. P. ., & Nair, K. M. (2013). *Antioxidant and Anti-inflammatory Assays Confirm Bioactive Compounds in Ajwa Date Fruit*.
<https://doi.org/dx.doi.org/10.1021/jf401371v>

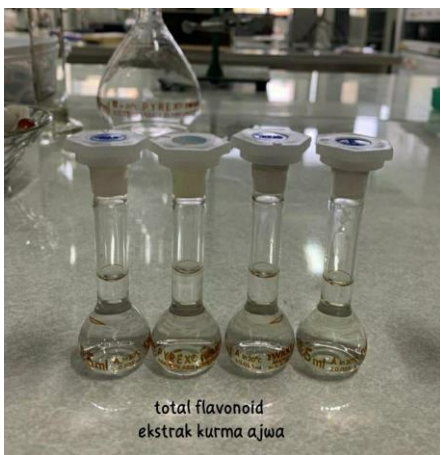
Zheng, W., Wang, K., Sun, Y., & Kuo, S.-M. (2018). *Dietary or supplemental fermentable fiber intake reduces the presence of Clostridium XI in mouse intestinal microbiota: The importance of higher fecal bacterial load and density*. <https://doi.org/10.1371/journal.pone.0205055>

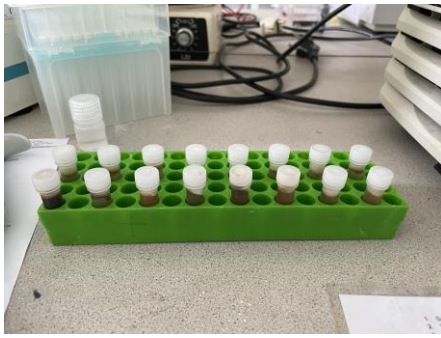
LAMPIRAN-LAMPIRAN:







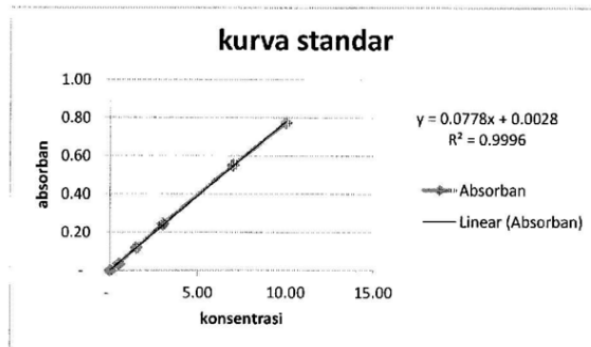




DATA KADAR TOTAL POLIFENOL

KURVA BAKU STANDAR

| Nama Sampel | konsentrasi | Absorban |
|--------------|-------------|----------|
| blanko | 0.0 | 0.000 |
| asam galat 1 | 0.5 | 0.035 |
| asam galat 2 | 1.5 | 0.122 |
| asam galat 3 | 3.0 | 0.244 |
| asam galat 4 | 7.0 | 0.552 |
| asam galat 5 | 10.0 | 0.775 |



| Nama Sampel | Absorban | konsentrasi total polifenol sampel (ppm) | mg sampel | Faktor pengenceran | Kadar total polifenol Sampel % b/b | Rata-rata Kadar total polifenol Sampel (%) b/b |
|------------------|----------|--|-----------|--------------------|------------------------------------|--|
| Eks Kurma Ajwa 1 | 0.109 | 1.343 | 50.7 | 10.0 | 0.265 | 0.277 |
| Eks Kurma Ajwa 2 | 0.117 | 1.456 | 50.7 | 10.0 | 0.287 | |
| Eks Kurma Ajwa 3 | 0.113 | 1.414 | 50.7 | 10.0 | 0.279 | |

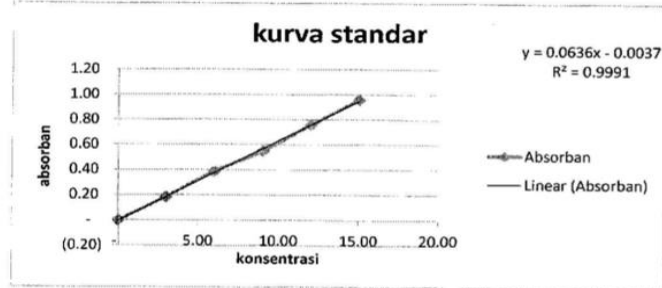
Keterangan : Kadar polifenol total yang terkandung dalam sampel adalah 0,277% b/b atau setara dengan 2,77 mg Asam Galat E/gram sampel

Nama sampel : Kurma Ajwa
 Tanggal Uji : 30 November 2021
 Tanggal Selesai : 30 November 2021

DATA KADAR TOTAL TANIN

KURVA BAKU STANDAR

| Nama Sampel | konsentrasi | Absorban |
|-------------|-------------|----------|
| blanko | 0.0 | 0.000 |
| EGCG 1 | 3.0 | 0.206 |
| EGCG 2 | 6.0 | 0.469 |
| EGCG 3 | 9.0 | 0.684 |
| EGCG 4 | 12.0 | 0.841 |
| EGCG 5 | 15.0 | 1.065 |



| Nama Sampel | Absorban | konsentrasi total tanin sampel (ppm) | mg sampel | Faktor pengenceran | Kadar total tanin Sampel % b/b | Rata-rata Kadar total Tanin Sampel (%) b/b |
|------------------|----------|--------------------------------------|-----------|--------------------|--------------------------------|--|
| Eks Kurma Ajwa 1 | 0.229 | 3.057 | 50.7 | 10.0 | 0.603 | 0.681 |
| Eks Kurma Ajwa 2 | 0.272 | 3.662 | 50.7 | 10.0 | 0.722 | |
| Eks Kurma Ajwa 3 | 0.270 | 3.632 | 50.7 | 10.0 | 0.716 | |

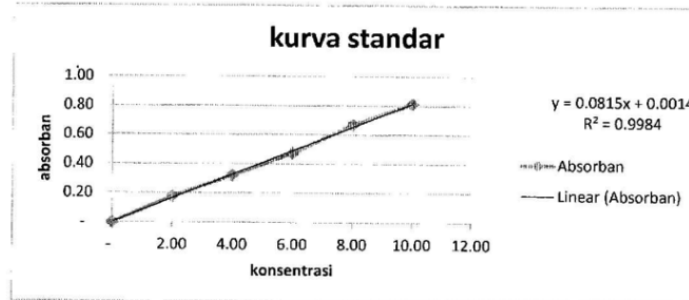
Intepetasi : Kadar tanin total yang terkandung dalam sampel adalah 0,681 % b/b atau setara dengan 6,819 mg Epigallo catechin galat (EGCG) E/gram sampel

Nama sampel : Kurma Ajwa
 Tanggal Uji : 30 November 2021
 Tanggal Selesai : 30 November 2021

DATA KADAR TOTAL FLAVONOID

KURVA BAKU STANDAR

| Nama Sampel | konsentrasi | Absorban |
|-------------|-------------|----------|
| blanko | 0.0 | 0.000 |
| quercetin 1 | 2.0 | 0.175 |
| quercetin 2 | 4.0 | 0.322 |
| quercetin 3 | 6.0 | 0.472 |
| quercetin 4 | 8.0 | 0.669 |
| quercetin 5 | 10.0 | 0.814 |



| Nama Sampel | Absorban | konsentrasi total flavonoid sampel (ppm) | mg sampel | Faktor pengenceran | Kadar total Flavonoid Sampel % b/b | Rata-rata Kadar total Flavonoid Sampel (%) b/b |
|------------------|----------|--|-----------|--------------------|------------------------------------|--|
| Eks Kurma Ajwa 1 | 0.063 | 0.706 | 50.7 | 3.3 | 0.046 | 0.035 |
| Eks Kurma Ajwa 2 | 0.044 | 0.466 | 50.7 | 3.3 | 0.031 | |
| Eks Kurma Ajwa 3 | 0.040 | 0.416 | 50.7 | 3.3 | 0.027 | |

Keterangan : Kadar flavonoid total yang terkandung dalam sampel adalah 0,035% b/b atau setara dengan 0,35 mg quersetin E/gram sampel

Nama sampel : Kurma Ajwa
 Tanggal Uji : 30 November 2021
 Tanggal Selesai : 30 November 2021

DATA PENENTUAN AKTIVITAS ANTIOKSIDAN

| NO | Kode Sampel | Absorban | % Penghambatan | Rata-rata | IC 50 |
|----|--------------------------|----------|----------------|-----------|-------------|
| 1 | blanko DPPH 1 | 0.966 | 0.965 | | 654.974 ppm |
| 2 | blanko DPPH 2 | 0.970 | | | |
| 3 | blanko DPPH 3 | 0.960 | | | |
| 4 | Eks kurma ajwa 100 ppm 1 | 0.899 | 6.839 | 5.872 | |
| 5 | Eks kurma ajwa 100 ppm 2 | 0.916 | 5.078 | | |
| 6 | Eks kurma ajwa 100 ppm 3 | 0.910 | 5.699 | | |
| 7 | Eks kurma ajwa 200 ppm 1 | 0.809 | 16.166 | 15.699 | |
| 8 | Eks kurma ajwa 200 ppm 2 | 0.818 | 15.233 | | |
| 9 | Eks kurma ajwa 200 ppm 3 | 0.820 | 15.026 | | |
| 10 | Eks kurma ajwa 300 ppm 1 | 0.783 | 18.860 | 18.618 | |
| 11 | Eks kurma ajwa 300 ppm 2 | 0.786 | 18.549 | | |
| 12 | Eks kurma ajwa 300 ppm 3 | 0.787 | 18.446 | | |
| 13 | Eks kurma ajwa 400 ppm 1 | 0.730 | 24.352 | 25.959 | |
| 14 | Eks kurma ajwa 400 ppm 2 | 0.699 | 27.565 | | |
| 15 | Eks kurma ajwa 400 ppm 3 | 0.693 | 28.187 | | |
| 16 | Eks kurma ajwa 500 ppm 1 | 0.572 | 40.725 | 41.002 | |
| 17 | Eks kurma ajwa 500 ppm 2 | 0.570 | 40.933 | | |
| 18 | Eks kurma ajwa 500 ppm 3 | 0.566 | 41.347 | | |

Persamaan Regresi DPPH:

| Konsentrasi sampel | persen penghambatan |
|--------------------|---------------------|
| 100 | 5.872 |
| 200 | 15.699 |
| 300 | 18.618 |
| 400 | 25.959 |
| 500 | 41.002 |

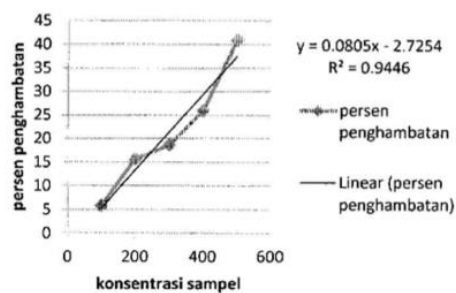
$$Y = 0.0805x - 2.7254$$

$$50 = 0.0805x - 2.7254$$

$$x = (50 + 2.7254) / 0.0805$$

$$x = 654.974 \text{ ppm}$$

kurva regresi

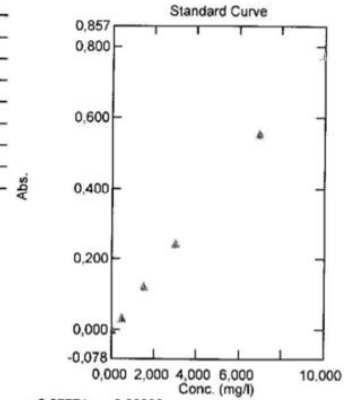


**LABORATORIUM BIOFARMAKA
FAKULTAS FARMASI UNIVERSITAS HASANUDDIN**

Gedung Pusat Kegiatan Penelitian Lantai IV Wing B

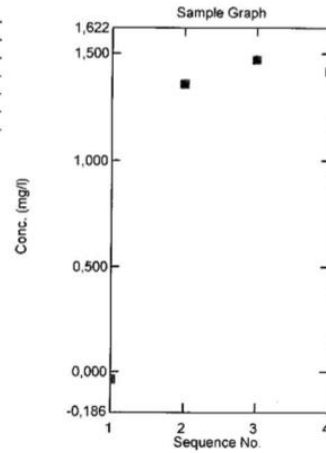
Standard Table

| | Sample ID | Type | Ex | Conc | WL745,5 | Wgt.Factor |
|---|--------------|----------|----|--------|---------|------------|
| 1 | blanko | Standard | | 0,000 | 0,000 | 1,000 |
| 2 | asam galat 1 | Standard | | 0,500 | 0,035 | 1,000 |
| 3 | asam galat 2 | Standard | | 1,500 | 0,122 | 1,000 |
| 4 | asam galat 3 | Standard | | 3,000 | 0,244 | 1,000 |
| 5 | asam galat 4 | Standard | | 7,000 | 0,552 | 1,000 |
| 6 | asam galat 5 | Standard | | 10,000 | 0,775 | 1,000 |
| 7 | | | | | | |



Sample Table

| | Sample ID | Type | Ex | Conc | WL745,5 |
|---|------------------|---------|----|--------|---------|
| 1 | blanko | Unknown | | -0,035 | 0,000 |
| 2 | Eks kurma ajwa 1 | Unknown | | 1,361 | 0,109 |
| 3 | Eks kurma ajwa 2 | Unknown | | 1,471 | 0,117 |
| 4 | Eks kurma ajwa 3 | Unknown | | 1,421 | 0,113 |
| 5 | | | | | |



Makassar, 02/12/2021
Analis

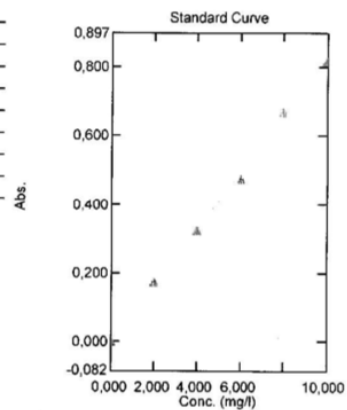
Dw

LABORATORIUM BIOFARMAKA FAKULTAS FARMASI UNIVERSITAS HASANUDDIN

Gedung Pusat Kegiatan Penelitian Lantai IV Wing B

Standard Table

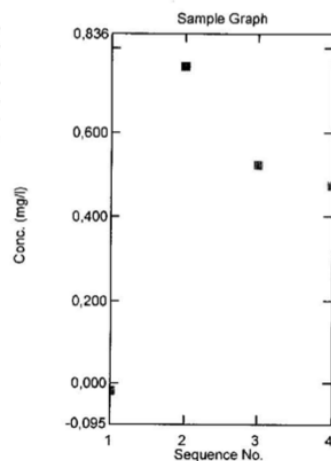
| | Sample ID | Type | Ex | Conc | WL427,8 | Wgt.Factor |
|---|-------------|----------|----|--------|---------|------------|
| 1 | blanko | Standard | | 0,000 | 0,000 | 1,000 |
| 2 | quercetin 1 | Standard | | 2,000 | 0,175 | 1,000 |
| 3 | quercetin 2 | Standard | | 4,000 | 0,322 | 1,000 |
| 4 | quercetin 3 | Standard | | 6,000 | 0,472 | 1,000 |
| 5 | quercetin 4 | Standard | | 8,000 | 0,669 | 1,000 |
| 6 | quercetin 5 | Standard | | 10,000 | 0,814 | 1,000 |
| 7 | | | | | | |



$y = 0,08144x + 0,00144$
Correlation Coefficient $r^2 = 0,99846$

Sample Table

| | Sample ID | Type | Ex | Conc | WL427,8 | Com |
|---|------------------|---------|----|--------|---------|-----|
| 1 | blanko | Unknown | | -0,017 | 0,000 | |
| 2 | Eks kurma ajwa 1 | Unknown | | 0,758 | 0,063 | |
| 3 | Eks kurma ajwa 2 | Unknown | | 0,523 | 0,044 | |
| 4 | Eks kurma ajwa 3 | Unknown | | 0,474 | 0,040 | |
| 5 | | | | | | |



Makassar, 02/12/2021
Analisis

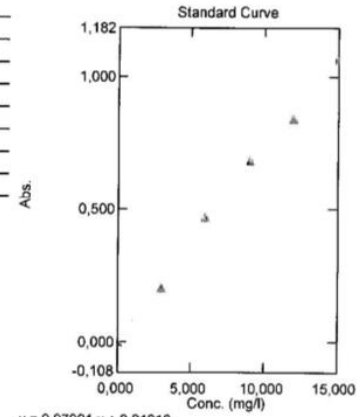
BW

LABORATORIUM BIOFARMAKA FAKULTAS FARMASI UNIVERSITAS HASANUDDIN

Gedung Pusat Kegiatan Penelitian Lantai IV Wing B

Standard Table

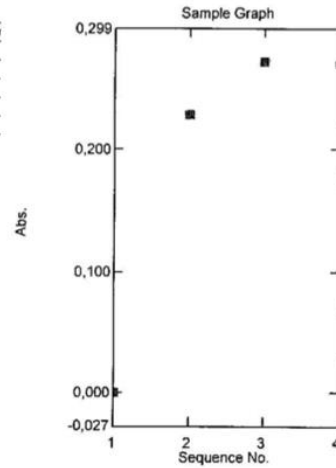
| | Sample ID | Type | Ex | Conc | WL736,5 | Wgt.Factor |
|---|-----------|----------|----|--------|---------|------------|
| 1 | blanko | Standard | | 0,000 | -0,000 | 1,000 |
| 2 | EGCG 1 | Standard | | 3,000 | 0,206 | 1,000 |
| 3 | EGCG 2 | Standard | | 6,000 | 0,469 | 1,000 |
| 4 | EGCG 3 | Standard | | 9,000 | 0,684 | 1,000 |
| 5 | EGCG 4 | Standard | | 12,000 | 0,841 | 1,000 |
| 6 | EGCG 5 | Standard | | 15,000 | 1,065 | 1,000 |
| 7 | | | | | | |



$y = 0,07091 x + 0,01216$
Correlation Coefficient $r^2 = 0,99592$

Sample Table

| | Sample ID | Type | Ex | Conc | WL736,5 | Cor |
|---|------------------|---------|----|--------|---------|-----|
| 1 | blank | Unknown | | -0,170 | 0,000 | |
| 2 | Eks kurma ajwa 1 | Unknown | | 3,057 | 0,229 | |
| 3 | Eks kurma ajwa 2 | Unknown | | 3,662 | 0,272 | |
| 4 | Eks kurma ajwa 3 | Unknown | | 3,632 | 0,270 | |
| 5 | | | | | | |



Makassar, 02/12/2021
Analis

BW

LABORATORIUM BIOFARMAKA
FAKULTAS FARMASI UNIVERSITAS HASANUDDIN

Gedung Pusat Kegiatan Penelitian Lantai IV Wing B

Sample Table

| | Sample ID | Type | Ex | Conc | WL513,0 | Comments |
|----|------------------------|---------|----|-------|---------|----------|
| 1 | Blank DPPH 1 | Unknown | | ***** | 0,966 | |
| 2 | Blank DPPH 2 | Unknown | | ***** | 0,970 | |
| 3 | Blank DPPH 3 | Unknown | | ***** | 0,960 | |
| 4 | E kurma ajwa 100 ppm.1 | Unknown | | ***** | 0,899 | |
| 5 | E kurma ajwa 100 ppm 2 | Unknown | | ***** | 0,916 | |
| 6 | E kurma ajwa 100 ppm 3 | Unknown | | ***** | 0,910 | |
| 7 | E kurma ajwa 200 ppm 1 | Unknown | | ***** | 0,809 | |
| 8 | E kurma ajwa 200 ppm 2 | Unknown | | ***** | 0,818 | |
| 9 | E kurma ajwa 200 ppm 3 | Unknown | | ***** | 0,820 | |
| 10 | E kurma ajwa 300 ppm 1 | Unknown | | ***** | 0,783 | |
| 11 | E kurma ajwa 300 ppm 2 | Unknown | | ***** | 0,783 | |
| 12 | E kurma ajwa 300 ppm 3 | Unknown | | ***** | 0,787 | |
| 13 | E kurma ajwa 400 ppm 1 | Unknown | | ***** | 0,730 | |
| 14 | E kurma ajwa 400 ppm 2 | Unknown | | ***** | 0,699 | |
| 15 | E kurma ajwa 400 ppm 3 | Unknown | | ***** | 0,693 | |
| 16 | E kurma ajwa 500 ppm 1 | Unknown | | ***** | 0,572 | |
| 17 | E kurma ajwa 500 ppm 2 | Unknown | | ***** | 0,570 | |
| 18 | E kurma ajwa 500 ppm 3 | Unknown | | ***** | 0,566 | |
| 19 | | | | | | |

DN

Analisis

01/12/2021

15:28:00



LABORATORIUM KIMIA MAKANAN TERNAK
JURUSAN NUTRISI DAN MAKANAN TERNAK
FAKULTAS PETERNAKAN
UNIVERSITAS HASANUDDIN

HASIL ANALISIS BAHAN

| No | Kode Sampel | Lemak Kasar(%) | Protein Kasar (%) | Karbohidrat (%) |
|----|-------------|----------------|-------------------|-----------------|
| 1 | Pakan | 66,27 | 3,47 | 11,65 |
| 2 | Pakan | 66,51 | 3,88 | 11,28 |

Makassar, 18 Agustus 2021

Analisis



Muhammad Syahrul

Nip. 19790603 2001 12 1 001

| KLP | Kode Sampel | Target Bakteri | | | | |
|------------------|-------------|------------------|------------------|------------------|------------------|------------------|
| | | BIFIDOBACTERIUM | BACTERIOIDES | CLOSTRIDIUM | LACTOBACILLUS | E.COLI |
| | | log DNA Copies/g | log DNA Copies/g | log DNA Copies/g | log DNA Copies/g | log DNA Copies/g |
| Klp I - pre | M1 | 4,34 | -0,96 | 7,29 | 6,23 | 5,1 |
| | M2 | 4,47 | -2,34 | 7,02 | 8,27 | 5,41 |
| | M3 | 5,15 | -1,33 | 6,72 | 6,71 | 7,56 |
| | M4 | 5,09 | -1,03 | 6,11 | 7,82 | 4,85 |
| | M5 | 4,91 | 0,96 | 6,49 | 7,34 | 4,46 |
| Klp II - pre | M6 | 4,41 | -1,04 | 6,57 | 7,57 | 2,71 |
| | M7 | 3,76 | 1,44 | 6,05 | 8,75 | 3,39 |
| | M8 | 5,28 | 1,23 | 7,32 | 7,94 | 5,85 |
| | M9 | 4,82 | -2,6 | 5,49 | 8,07 | 3,5 |
| | M10 | 4,88 | -0,69 | 5,35 | 8,44 | 3,09 |
| Klp III - pre | M11 | 5,29 | 1 | 6,59 | 7,81 | 3,23 |
| | M12 | 5,1 | 0 | 6,85 | 7,4 | 5,6 |
| | M13 | 5,47 | 0,62 | 4,98 | 8,69 | 3,18 |
| | M14 | 5,29 | 0,46 | 5,67 | 8,06 | 3,28 |
| | M15 | 4,22 | 3,86 | 6,75 | 8,76 | 2,91 |
| Klp I - post | M16 | 5,8 | 5,51 | 7,47 | 6,62 | 4,25 |
| | M17 | 3,58 | 1,5 | 7,04 | 7,89 | 5,73 |
| | M18 | 4,52 | 2,73 | 6,18 | 7,65 | 9,55 |
| | M19 | 4,89 | 3,05 | 6,42 | 6,79 | 4,73 |
| | M20 | 3,98 | 2,35 | 6,04 | 7 | 3,89 |
| Klp II - post | M21 | 7,44 | -0,78 | 6,92 | 6,54 | 5,04 |
| | M22 | 6,97 | -0,37 | 8,32 | 6,73 | 6,49 |
| | M23 | 6,33 | -1,22 | 8,87 | 5,89 | 11,37 |
| | M24 | 6,79 | -2,74 | 8,02 | 6,96 | 5,51 |
| | M25 | 7,04 | -2,01 | 8,01 | 7,33 | 6,14 |
| Klp III - post | M26 | 6,66 | -1 | 7,27 | 7,03 | 6,83 |
| | M27 | 7,81 | -0,09 | 7,76 | 7,32 | 11,37 |
| | M28 | 6,55 | -0,62 | 6,92 | 6,84 | 6,48 |
| | M29 | 7,96 | -0,46 | 7,6 | 6,66 | 5 |
| | M30 | 5,93 | -2,41 | 7,44 | 6,26 | 6,42 |
| Klp I - post 2 | M31 | 5,25 | 1,86 | 7,37 | 6,32 | 4,17 |
| | M32 | 4,01 | 2,89 | 6,99 | 7,73 | 5,73 |
| | M33 | 5,22 | 2,65 | 6,25 | 7,15 | 8,79 |
| | M34 | 3,96 | 2,74 | 6,38 | 6,2 | 4,73 |
| | M35 | 3,75 | 2,12 | 6 | 6,67 | 3,97 |
| Klp II - post 2 | M36 | 6,95 | 0 | 7,02 | 7,26 | 5,07 |
| | M37 | 7,23 | 0 | 8,11 | 8,05 | 5,39 |
| | M38 | 5,6 | 0 | 7,77 | 6,35 | 11,35 |
| | M39 | 6,31 | 0 | 6,85 | 7,52 | 5,47 |
| | M40 | 7,01 | 0 | 7,61 | 8,01 | 5,4 |
| Klp III - post 2 | M41 | 7,37 | 0,34 | 7,85 | 8,31 | 3,83 |
| | M42 | 8,5 | 0,68 | 8,03 | 9,21 | 9,54 |
| | M43 | 7,87 | 1,54 | 7,91 | 7,96 | 5,82 |
| | M44 | 8,53 | 1,99 | 7,92 | 9,79 | 4,28 |
| | M45 | 8,88 | 2,51 | 7,88 | 8,87 | 4,52 |