

DAFTAR PUSTAKA

- Abercrombie M, Hickman M, Johnson ML, Thain M. 1993. *Kamus Lengkap Biologi*.
- Alivotto G. 2008. *Carbon and Forests*. <http://www.olivotto.com/carbon/index.html>
[Akses: tanggal 23 Mei 2020]
- Asriyana dan Yuliana, 2012. Produktivitas Perairan. Bumi Aksara. Jakarta.
- [APHA] American Public Health Association. 2005. Standard Methods for Examination of Water and Wastewater, M.A.N. Franson (21sted.), Baltimore (US). Port City Press
- Ayu, S., Khairul A., Yayu A., 2020. Analisis kelimpahan makroalga di wilayah perairan pulau Lae-Lae Dan Pulau Barrangcaddi Kota Makassar. (skripsi). Universitas Hasanuddin. Makassar.
- Azkab, M.H. 1999. Pedoman Inventarisasi Lamun. Oseana. 24(1):1-16.
- Azkab M.H. 2006. Ada Apa dengan Lamun. Oseana, Volume XXXI Nomor 3: 4555. ISSN 0216-1877. Bidang Sumberdaya Laut, Pusat Penelitian Oseanografi - LIPI. Jakarta.
- Behrenfeld M.J., Boss E, Siegel DA, Shea DM. 2005. Carbon-based ocean productivity and phytoplankton physiology from space. *Global Biogeochemical Cycles*. Vol 19. GB1006, doi:10.1029/2004GB002299.
- Bengen DG. 2001. Ekosistem dan Sumber Daya Alam Pesisir dan Laut.Synopsis. Pusat Kajian Sumber daya Pesisir dan Lautan, Institut Pertanian Bogor. Bogor.
- Chen H., 2017. Simplified, rapid, dan inexpensive estimation of water primary productivity based on chlorophyll fluorescence parameter Fo. *Journal of Plant Physiology*, 211: 128–135.
- Collier, C., M. Waycott and A. Ospina. 2012. Responses of four Indo-West Pacific seagrass species to shading. *Marine Pollution Bulletin* 65: 342-354.
- Davis, C. dan Natarina. 1995. Sains dan Teknologi 2: Berbagai Ide Untuk Menjawab Tantangan dan Kebutuhan oleh Ristek Tahun 2009. Gramedia, Jakarta.
- Den Hartog C. 1970. *The Seagrasses of The World* (M). Amsterdam, Netherland: North Holland Publishing House.
- DenHartog, C. 2006. Taxonomy and Biology of seagrass in seagrasses biology, Ecology and convertation: 1-23. USA
- Erfteimeijer, P.L.A., Osinga, R. and Mars, A.E. 1993. Primary Production of Seagrass Beds in South Sulawesi (Indonesia): a Comparison of Habits, Method and Species. *Aquat Bot.*, 46: 67-90.
- Estacion, J. S. dan M. D. Fortes. 1988. Growth Rates and Primary Production of *Enhalus acoroides* (L.f.) royle from Lag-it, North Bais Bay, the Philippines. *Aquatic Botany.*, 29:347-356.

- Filippino K.C., Margaret R. Mulholland, Peter W. Bernhardt. 2011. Nitrogen uptake and primary productivity rates in the Mid-Atlantic Bight (MAB). *Estuarine, Coastal and Shelf Science*, 91: 13-23.
- Fourqurean, J.W., Duarte, C.M., Kennedy, H., Marba, N., Holmer, M., Matoe, M.A., Apostolaki, E., Kendrick, G.A., Jensen, D.K., McGlathery, K.J., and Serrano, O. 2012. Seagrass Ecosystems as a Globally Significant Carbon Stock. *Nature Geoscience*. pp 1-5.
- Graha, Y.I. 2015. Simpanan Karbon Padang Lamun di Kawasan Pantai Sanur, Kota Denpasar. [Thesis]. Program Pascasarjana, Universitas Udayana, Bali.
- Govindasamy, C., M. Arulpriya, K. Anantharaj, P. Ruban dan R. Srinivasan. 2013. Seasonal Variations in Seagrass Biomass and Productivity in Palk Bay, Bay of Bengal, India. *International Journal of Biodiversity and Conservation*, 5: 408-417.
- Green, E.P., and Short, F.T. 2003. *World Atlas of Seagrassers*. Prepared by the UNEP World Conservation Monitoring Centre. University of California Press Berkeley. USA
- Hairiah, K., Ekadinata, A., Sari, R. R., dan Rahayu, S. 2011. *Pengukuran cadangan Karbon dari tingkat Lahan Ke Bentang Lahan*. World Agroforestry Center ICRAF. Bogor.
- Hariyadi S, E. M. Adiwilaga, T. Prartono, S. Hardjoamidjojo dan A. Damar. 2010. Produktivitas Primer Estuari Sungai Cisadane Pada Musim Kemarau. *Limnotek*, 17 (1): 49-57.
- Harris, J.M dan Feriz, M. B. 2011. Forest, Agriculture, and Climate: *Economics and policy issues*. *Global Development and Environment Institute*, Tufts University, Medford, MA 02155.
- Hartati, R., Pratikto, I., & Pratiwi, T. N. 2017. *Biomassa dan Estimasi Simpanan Karbon pada Ekosistem Padang Lamun di Pulau Menjangan Kecil dan Pulau Sintok, Kepulauan Karimunjawa*. *Buletin Oseanografi Marina April 2017 Vol 6 No 1:74-81*. Departemen Studi Ilmu Kelautan, Fakultas Perikanan dan Ilmu Kelautan, Universitas Diponegoro Kampus Tembalang: Semarang.
- Hasanah, 2014. Efek umur semaian lamun *Enhalus acoroides* terhadap pertumbuhan dan sintasanya saat ditanam di Pulau Barrang Lompo (Skripsi). Unhas. Makassar.
- Hemminga, M.A., dan C.M. Duarte. 2000. *Seagrass Ecology*. Australia: Cambridge University Press.
- Hernawan, U.W., Sjafrie, N.D.M., Supriyadi, I.H., Iswari, M.Y., Anggraini, K., Rahmat dan Suyarso. 2017. *Status Padang Lamun Indonesia 2017*. Jakarta. 24 hlm.
- Hamuna, B., Paulangan, Y.P., dan Dimara, L. 2018. Kajian suhu permukaan laut menggunakan data satelit AquaMODIS di perairan Jayapura, Papua. *Depik*, 4(3), 160- 167
- Hutomo, M. dan M. H. Azkab. 1987. Peranaan Lamun di Lingkungan Laut Dangkal. *Oseana XII(1)*: 13-23.

- Indriyanto, K. 2006. Ekologi Hutan. Bumi Aksara. Jakarta.
- Janzen, H. 2004. Carbon Cycling in Earth Systems - a Soil Science Perspective. *Agriculture, Ecosystems and Environment*, 104: 399 – 417.
- Kawaroe, Mujizat., Nugraha, Aditya Hikmat., dan Juraij. 2016. Ekosistem Padang Lamun. PT Penerbit IPB Press. Bogor.
- Keputusan Menteri Lingkungan Hidup No.51. 2004. Baku Mutu Air Laut Untuk Biota Laut.
- Kennedy H., dan Bjork M. 2009. *Seagrass meadows The Management Of Natural Coastal Carbon Sinks Gland Switzerland*: IUCN. Hlm. 23-29.
- Kenworthy WJ, Wyllie-Echeverria S, Coles RG, Pergent G, Martini CP. 2006. Seagrass Conservation Biology: An Interdisciplinary Science for Protection of the Seagrass Biome. Di dalam Larkum AWD, Orth RJ, Duarte CM (eds) *Seagrasses: Biology, Ecology and Conservation*. hlm 595-623. Springer. Netherlands.
- Kirk JTO, 2011. Light and Photosynthesis in Aquatic Ecosystems. Third Edition. New York: Cambridge University Press.
- Kiswara, W. dan M. Hutomo. 1985. Habitat dan sebaran geografik lamun. *Oseana* X(1): 21-30.
- Laffoley, D. and Grimsditch, G. 2009. The Management of Natural Coastal Carbon Sinks. IUCN, Gland Switzerland
- Lee, Z.P., Marra, J., Perry, M.J. and Kahru, M., 2014. Estimating Oceanic Primary Productivity from Ocean Color Remote Sensing: A Strategic Assesment. *Journal of Marine Systems* 149: 50-59.
- Mateo, M.A., Renom, P., Hemminga, M.A. dan Peene J. 2001. Measurement of seagrass production using the ¹³C stable isotope comapre with calssical O₂ and ¹⁴C methods. *Mar. Ecol. Prog. Ser.* 223: 157-165.
- Mercado-Santana J.A..2017. Productivity in the Gulf of California large marine ecosystem. *Environmental Development*, 22: 18–29. <http://dx.doi.org/10.1016/j.envdev.2017.01.003>
- Mashoreng, S. 2017. Perubahan penyerapan karbon di Pulau Barranglompo Kurun Waktu Tahun 2001-2016. Makalah Seminar Nasional Tahunan XIV Hasil Penelitian Perikanan dan Kelautan, tanggal 22 Juli 2017 di Jogjakarta.
- Mashoreng. S.,2019. Serapan Karbon lamun *Thalassia hemprichii* pada beberapa kedalaman. *Jurnal ilmu kelautan Spermonde* (2019) 5(1): 11-17.
- Mashoreng. S 2019. Serapan karbon lamun *Thalassodendron ciliatum* di perairan Panrangluhu Kabupaten Bulukumba Provinsi Sulawesi Selatan. *Jurnal ilmu kelautan* (2019).
- Nybakken, JW. 1992. Biologi Laut suatu pendekatan ekologis. PT. Gramedia. Jakarta.

- Nybakken JW. 1988. Biologi laut: suatu pendekatan ekologis. [terjemahan dari: Marine Biology: An ecological approach, 3rd ed]. Eidman HM, Koesoebiono, Bengen DG, Hutomo M dan Sukarjo S (penerjemah). Jakarta: PT. Gramedia. 459. Hlm
- Odum EP. 1996. Dasar-Dasar Ekologi. Edisi Ketiga. Diterjemahkan oleh T. Samingan. Gadjah Mada University Press. Yogyakarta.
- Parsons, T.R., Maita, Y. dan Lalli, C.M. 1984. *A Manual Of Chemical and Biological Methods For Seawater Analysis*, Permagon Press, Oxford.
- Petus, C., C. Collier, M. Devlin, M. Rasheed and S. McKenna. 2014. Using MODIS data for understanding changes in seagrass meadow health: A case study in the Great Barrier Reef (Australia). *Marine Environmental Research* 98: 68-85.
- Phillips, R.C. and Menez, E.G. 1988. *Seagrasses*. Smithsonian Contributions to the Marine Sciences, No. 34, Smithsonian Institution Press, Washington, D.C.
- Philips, R. C., dan Menez, E.G, 1998. *Seagrass*. Smithsonian. Institution press.
- Rahayu N. L., W. Lestari dan E. R. Ardly. 2017. Bioprospektif Perairan Berdasarkan Produktivitas: Studi Kasus Estuari Sungai Serayu Cilacap, Indonesia. *Biosfera*, 34 (1): 15-21. DOI: 10.20884/1.mib.2017.34.1.405.
- Rahardiarta, I.K.V.S., Putra, I.D.N.N., dan Suteja, Y. 2017. *Simpanan Karbon Pada Padang Lamun di Kawasan Pantai Mengiat Nusa Dua Bali*. Fakultas Ilmu Kelautan Dan Perikanan. Universitas Udayana. *Journal Of Marine And Aquatic Sciences* 5 (1), 1-10 (2019).
- Rustam, A., Bengen, D. G., Arifin, Z., & Gaol, J. L. (2014). Dinamika Dissolved Inorganic Carbon (DIC) di ekosistem lamun Pulau Pari. *Jurnal Segara*, 10(1), 31- 41.
- Rochmady. 2010. Rehabilitasi Ekosistem Padang Lamun (Tesis). Program Pascasarjana Universitas Hasanuddin. Makassar. 25 hlm.
- Satwiko, 2004. Modul praktikum fisika. Teknik industri. Universitas Brawiaya. Malang.
- Short, F. T., dan Coles, R. G. (2001). *Global Seagrass Research Methods*. (R. G. Coles, Ed.) Amsterdam: Elsevier Science B.V.
- Short FT, Coles RG. (eds). 2003. *Global Seagrass Research Methods* Amsterdam: Elsevier Science BV.
- Short FT, Coles RG. (eds). 2006. *Global Seagrass Research Methods*. Amsterdam: Elsevier Science BV.
- Supriadi, Richardus F., Kaswadji, Dietrich G., Bengen, dan Malikusworo H. 2012. Stok dan Neraca Karbon Komunitas Lamun di Pulau Barranglombo, Makassar. *Ilmu Kelautan*. (1): 1-10.
- Supriadi, 2013. Estimasi potensi penyerapan karbon oleh komunitas lamun dipulau BarrangLombo, Makassar. Laporan hasil penelitian post doctoral Universitas hasanuddin Makassar, Makassar.
- Sutaryo, D. 2009. Perhitungan Biomassa: Sebuah Pengantar untuk Studi Karbon dan Perdagangan Karbon. Wetlands International Indonesia Programme, Bogor

- Strydom, S., K. McMaho, and P. S. Laverty. 2017. Response of the seagrass *Halophila ovalis* to altered light quality in a simulated dredge plume. *Marine Pollution Bulletin* 121: 323-330.
- Tamire G., dan S. Mengistou. 2014. Biomass and net aboveground primary productivity of macrophytes in relation to physico-chemical factors in the littoral zone of Lake Ziway, Ethiopia. *Tropical Ecology*, 55(3): 313-326.
- Tuwo, A. (2011). *Pengelolaan Ekowisata Pesisir dan Laut*. Surabaya, Brilianinternasional.
- UNEP. 2004. *Seagrass in The South China Sea*. UNEP/GEF/SCS Technical Publication No.3. Bangkok, Thailand
- Vallina S.M., P. Cermenoa, S. Dutkiewicz, M. Loreau, J.M. Montoya 2017. Phytoplankton functional diversity increases ecosystem productivity and stability. *Ecological Modelling*, 361: 184–196. <http://dx.doi.org/10.1016/j.ecolmodel.2017.06.020>
- Wardah., B. Toknok., dan Zulkaidhah. 2009. *Persediaan Karbon Tegakan Agroforestri di Zona Penyangga Hutan Konservasi Taman Nasional Lore Lindu, Sulawesi Tengah*. [Penelitian Strategi Nasional]. Universitas Tadulako, Palu, Sulawesi Tengah.
- Wetzel, R.G. 2001. *Limnology Lake and River Ecosystem Third Edition*. Academic Press, London.
- Xiao X, Y. Wang, H. Zhang, X. Yu. 2015. Effects of primary productivity and ecosystem size on food-chain length in Raohe River, China. *Acta Ecologica Sinica*, 35: 29–34. <http://dx.doi.org/10.1016/j.chnaes.2015.04.003>.
- Zhang, C., and Han, M., 2015. Mapping Chlorophyll-a Concentration in Laizhou Bay Using Landsat-8 OLI data. *Proceedings of the 36th IAHR World Congress*. Netherland.

**L
A
M
P
I
R
A
N**

Lampiran 1. Hasil analisis varians serapan karbon antar kedalaman di Pulau Lae-Lae

a. Anova Biomassa Basah antar Kedalaman

Descriptives

Serapan Karbon

	N	Mean	Std. Deviation	Std. Error	95% Confidence Interval for Mean		Minimum	Maximum
					Lower Bound	Upper Bound		
					1	3		
2	3	.6033	.11060	.06386	.3286	.8781	.50	.72
Total	6	.4633	.17212	.07027	.2827	.6440	.26	.72

ANOVA

Serapan Karbon

	Sum of Squares	df	Mean Square	F	Sig.
Between Groups	.118	1	.118	15.406	.017
Within Groups	.031	4	.008		
Total	.148	5			

b. Anova Biomassa kering antar Kedalaman

Descriptives

Serapan karbon

	N	Mean	Std. Deviation	Std. Error	95% Confidence Interval for Mean		Minimum	Maximum
					Lower Bound	Upper Bound		
					1	3		
2	3	3.3367	.48439	.27966	2.1334	4.5400	2.95	3.88
Total	6	2.5933	.92251	.37661	1.6252	3.5614	1.37	3.88

ANOVA

Serapan Karbon

	Sum of Squares	df	Mean Square	F	Sig.
Between Groups	3.315	1	3.315	14.110	.020
Within Groups	.940	4	.235		
Total	4.255	5			

c. Anova Luas daun antar Kedalaman

Descriptives

Serapan Karbon

	N	Mean	Std. Deviation	Std. Error	95% Confidence Interval for Mean		Minimum	Maximum
					Lower Bound	Upper Bound		
1	3	.1067	.04726	.02728	-.0107	.2241	.07	.16
2	3	.4333	.05508	.03180	.2965	.5701	.38	.49
Total	6	.2700	.18472	.07541	.0762	.4638	.07	.49

ANOVA

Serapan Karbon

	Sum of Squares	df	Mean Square	F	Sig.
Between Groups	.160	1	.160	60.785	.001
Within Groups	.011	4	.003		
Total	.171	5			

Lampiran 2. Hasil analisis varians serapan karbon antar kedalaman di Pulau Barrangcaddi

a. Anova Biomassa Basah antar Kedalaman

Descriptives

Serapan Karbon

	N	Mean	Std. Deviation	Std. Error	95% Confidence Interval for Mean		Minimum	Maximum
					Lower Bound	Upper Bound		
					1	3		
2	3	.0500	.01732	.01000	.0070	.0930	.04	.07
Total	6	.0540	.01766	.00721	.0355	.0725	.03	.07

ANOVA

Serapan Karbon

	Sum of Squares	df	Mean Square	F	Sig.
Between Groups	.000	1	.000	.262	.636
Within Groups	.001	4	.000		
Total	.002	5			

b. Anova Biomassa kering antar Kedalaman

Descriptives

Serapan Karbon

	N	Mean	Std. Deviation	Std. Error	95% Confidence Interval for Mean		Minimum	Maximum
					Lower Bound	Upper Bound		
					1	3		
2	3	.2833	.10116	.05840	.0320	.5346	.22	.40
Total	6	.3133	.09873	.04030	.2097	.4169	.22	.41

ANOVA

Serapan Karbon

	Sum of Squares	df	Mean Square	F	Sig.
Between Groups	.005	1	.005	.498	.519
Within Groups	.043	4	.011		
Total	.049	5			

c. Anova Luas daun antar Kedalaman

Descriptives

Serapan Karbon

	N	Mean	Std. Deviation	Std. Error	95% Confidence Interval for Mean		Minimum	Maximum
					Lower Bound	Upper Bound		
1	3	.0267	.00577	.00333	.0123	.0410	.02	.03
2	3	.0467	.01528	.00882	.0087	.0846	.03	.06
Total	6	.0367	.01506	.00615	.0209	.0525	.02	.06

ANOVA

Serapan Karbon

	Sum of Squares	df	Mean Square	F	Sig.
Between Groups	.001	1	.001	4.500	.101
Within Groups	.001	4	.000		
Total	.001	5			

Lampiran 3. Hasil analisis varians serapan karbon antar Pulau berdasarkan kedalaman pada biomassa basah

a. kedalaman 1 meter

Descriptives

Serapan Karbon

	N	Mean	Std. Deviation	Std. Error	95% Confidence Interval for Mean		Minimum	Maximum
					Lower Bound	Upper Bound		
Pulau Lae-Lae	3	.3233	.05508	.03180	.1865	.4601	.26	.36
Pulau Barrangcaddi	3	.0567	.02309	.01333	-.0007	.1140	.03	.07
Total	6	.1900	.15086	.06159	.0317	.3483	.03	.36

ANOVA

Serapan Karbon

	Sum of Squares	df	Mean Square	F	Sig.
Between Groups	.107	1	.107	59.813	.002
Within Groups	.007	4	.002		
Total	.114	5			

b. kedalaman 2 meter

Descriptives

Serapan KRBON

	N	Mean	Std. Deviation	Std. Error	95% Confidence Interval for Mean		Minimum	Maximum
					Lower Bound	Upper Bound		
Pulau Lae-Lae	3	.6033	.11060	.06386	.3286	.8781	.50	.72
Pulau Barrangcaddi	3	.0500	.01732	.01000	.0070	.0930	.04	.07
Total	6	.3267	.31123	.12706	.0000	.6533	.04	.72

ANOVA

Serapan Karbon

	Sum of Squares	df	Mean Square	F	Sig.
Between Groups	.459	1	.459	73.287	.001
Within Groups	.025	4	.006		
Total	.484	5			

Lampiran 4. Hasil analisis varians serapan karbon antar Pulau berdasarkan kedalaman pada biomassa kering

a. kedalaman 1 meter

Descriptives

Serapan Karbon

	N	Mean	Std. Deviation	Std. Error	95% Confidence Interval for Mean		Minimum	Maximum
					Lower Bound	Upper Bound		
					Pulau Lae-Lae	3		
Pulau Barrangcaddi	3	.3433	.10693	.06173	.0777	.6090	.22	.41
Total	6	1.0967	.88301	.36049	.1700	2.0233	.22	2.34

ANOVA

Serapan Karbon

	Sum of Squares	df	Mean Square	F	Sig.
Between Groups	3.405	1	3.405	27.601	.006
Within Groups	.493	4	.123		
Total	3.899	5			

b. Kedalaman 2 meter

Descriptives

Serapan Karbon

	N	Mean	Std. Deviation	Std. Error	95% Confidence Interval for Mean		Minimum	Maximum
					Lower Bound	Upper Bound		
					Pulau Lae-Lae	3		
Pulau Barrangcaddi	3	.2833	.10116	.05840	.0320	.5346	.22	.40
Total	6	1.8100	1.70141	.69460	.0245	3.5955	.22	3.88

ANOVA

SK

	Sum of Squares	df	Mean Square	F	Sig.
Between Groups	13.984	1	13.984	114.219	.000
Within Groups	.490	4	.122		
Total	14.474	5			

Lampiran 5. Hasil analisis varians serapan karbon antar Pulau berdasarkan kedalaman pada Luas daun

a. kedalaman 1 meter

Descriptives

Serapan Karbon

	N	Mean	Std. Deviation	Std. Error	95% Confidence Interval for Mean		Minimum	Maximum
					Lower Bound	Upper Bound		
					Pulau Lae-Lae	3		
Pulau Barrangcaddi	3	.0267	.00577	.00333	.0123	.0410	.02	.03
Total	6	.0667	.05317	.02171	.0109	.1225	.02	.16

ANOVA

SK

	Sum of Squares	df	Mean Square	F	Sig.
Between Groups	.010	1	.010	8.471	.044
Within Groups	.005	4	.001		
Total	.014	5			

b. kedalaman 2 meter

Descriptives

Serapan Karbon

	N	Mean	Std. Deviation	Std. Error	95% Confidence Interval for Mean		Minimum	Maximum
					Lower Bound	Upper Bound		
					Pulau Lae-Lae	3		
Pulau Barrangcaddi	3	.0467	.01528	.00882	.0087	.0846	.03	.06

Total	6	.2400	.21485	.08771	.0145	.4655	.03	.49
-------	---	-------	--------	--------	-------	-------	-----	-----

ANOVA

SK

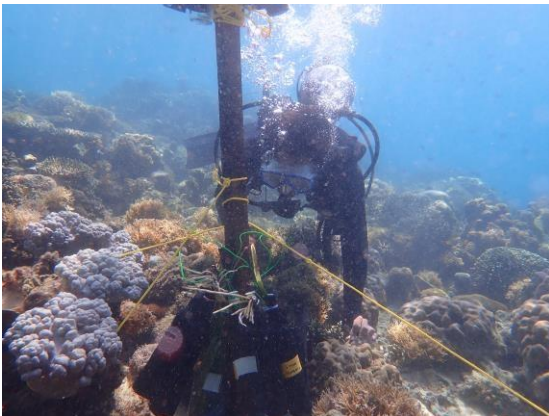
	Sum of Squares	df	Mean Square	F	Sig.
Between Groups	.224	1	.224	137.306	.000
Within Groups	.007	4	.002		
Total	.231	5			

Lampiran 6. Foto-foto kegiatan dilapangan.



(a)

(b)



(c)

(d)



(e)