

DAFTAR PUSTAKA

- Abdulla Fayez A., AW Al-Shareef. 2009. *Roof rainwater harvesting systems for household water supply in Jordan*. *Desalination* 243: 195-207.
- Afriyanto dan Suskiyatno. 2015. Metoda “*Rain Water Harvesting*” untuk Kebutuhan Air Bersih Dormitori Unika Soegijapranata Sebagai Solusi Teknologi Yang Ekologis.
- Akter, A. Ahmed, S. 2015. *Potentiality of rainwater harvesting for an urban community in Bangladesh*. *Journal of Hydrology*. [www.elsevier.com / locate / jhydrol](http://www.elsevier.com/locate/jhydrol).
- Arhami, M. 2005. *Konsep Dasar Sistem Pakar*. Penerbit Andi. Yogyakarta.
- Arikunto, S. 2006. *Metode Penelitian Kualitatif*. Jakarta: Bumi Aksara
- Asdak, C. 2014. *Hidrologi dan Pengelolaan Daerah Aliran Sungai*. Gadjah Mada University Press. Indonesia.
- Badan Pusat Statistik Kota Makassar. 2014. *Kota Makassar dalam Angka*. Katalog BPS 1102001.7471. Makassar.
- Chiu, Yie-Ru. 2011. *Simulation-Based Spatial System For Rainwater Harvesting System In The Sustainable Campus Project*. Taiwan : Tzu-Chi University.
- Dhalla dan Christine Zimmer, 2010. *Low Impact Development Storm -Water Management Planning And Design Guide*. Water Management Guideline. Toronto and Region Conservation Authority.
- D Hillel, (2005). *Rainwater Harvestinf in Rural Kenya*. Reliability in A Variable and Changing Climate.
- Di Luzio dkk. 2002. *Integration of Watershed Tools and SWAT Model Into Basins*. *JAWRA Journal of the American Water Resources Association* 38(4):1127-1141
- Durkin, J. 1994. *Expert Systems Design and Development*. Prentice Hall International Inc. New Jersey.

- Duxbury, A; B. Alyn; C. Duxbury And K.A. Sverdrup 2002. *Fundamentals of Oceanography-4th Ed*, McGraw-Hill Publishing, New York
- Fitri Ramdhani Harahap , Dampak Urbanisasi Bagi Perkembangan Kota Di Indonesia, Jurnal Society, Vol. I, No.1, Juni 2013
- Findikaki, Irene. 1990. *Expert Systems: Applications to Urban Planning* pp 125-132
- Ford, A. 2009. *Modeling the Environment*. (2nd edition). Island Press. Washington D.C.
- Ghisi EneDir, Davi da Fonseca Tavares, Vinicius Luis Rocha. 2009. *Rainwater harvesting in petrol stations in Brasilia: Potential for potable water saving and investment feasibility analysis. Resources, Conservation and Recycling* 54:79.85.
- Giarratano, J., and Riley, G. 2005. *Expert Systems. Principles and Programming*. PWS Publishing Company. Boston.
- Harahap, A. R. M. 2010. Analisis (Teoritis dan Empiris) Perubahan Tata Guna Lahan Terhadap Ketersediaan Lahan dan Migrasi Penduduk . Fakultas Teknik Universitas Sumatera Utara. Sumatera
- Hardjowigeno, S. 1995. *Klasifikasi Tanah Pedogenesis*. Akademika Pressindo. Jakarta.
- Haryoso, B. 2010. Review Modeling Hidrologi DAS Di Indonesia. Jurnal Sains & Teknologi Modifikasi Cuaca, Vol. 11, No. 1. Hal. 41-47.
- Hashim, H.dkk. 2013. *Simulation Based Programming for Optimization of Large-scale Rainwater Harvesting System : Malaysia case study*. Jurnal Elsevier : Resources, Conservation and Recycling . Hal. 1 – 9.
- Heckerman, D. 1992. *The Certainty Factor Model*. Encyclopedia of Artificial Intelligence Journal. Second Edition. Publisher Wiley. New York.
- Indarto. 2010. *Hidrologi : Dasar Teori dan Contoh Aplikasi Model Hidrologi* (2nd ed.). Jakarta: Bumi Aksara.

- Irsan Vanawandy, Atika Lubis, Edi . 2013 . *Potential Of Rainwater Harvesting In Order To Reduce Surface Runoff Using Hec-Hms Model .Case Study: East Bandung.*
- Ivory, D . 2015. Prospek Pemanfaatan Air Terproduksi. Teknik Kimia, Fakultas Teknologi Industri, Institut Teknologi Bandung . Researchgate.net.
- Jovis, Verlag. 2011. *Water Sensitive Urban Design Principles and Inspiration for Sustainable Stormwater Management in the City of the Future.* Jurnal Sustainable Water Management in the City of the Future. Berlin. Sonnenschein & Co., Ltd.
- J.Mwenge Kahinda, dkk. 2009. *A GIS-base Decision Support System for Rainwater Harvesting.* Jurnal Elsevier : Physics and Chemistry of The Earth. Hal. 767-775.
- J. Patanduk, dkk. 2014. Pengaruh Perubahan Tata Guna Lahan Terhadap Koefisien Limpasan (*Run Off*) Kota Makassar Berbasis SIG.
- Kim Ree-Ho, Sangho Lee, Jinwoo Jeong, Jung-Hun Lee dan Yeong-Kwan Kim. 2007. *Reuse greywater and rainwater using fiber filter media and metal membrane.* *Desalination* 202:326-332.
- Lizarrage-Mendiona, Liliana, dkk. (2015). Article: *Estimating the Rainwater Harvesting Potential per Household in an Urban Area: Case Study in Central Mexico.* ISSN 2073-4441, www.mdpi.com/jurnal/water.
- Lubis, J. (2011). Mewujudkan Kota Pesisir Indonesia, Bulletin Tata Ruang Ditjen Penataan Ruang Kementerian PU.
- Madan K Jha, dkk. 2013. *Rainwater harvesting planning using geospatial techniques and multicriteria decision analysis.* Jurnal Elsevier : Resources, Conservation and Recycling . Hal. 96-111.
- Mahmud Achmad. 2008. Tehnik Simulasi dan Permodelan. Yogyakarta: Universitas Gajah Mada.
- Mananoma, Tiny Dan Soetopo, Widandi (2008). Permodelan Sebagai Sarana dalam Mencapai Solusi Optimal. Jurnal Teknik Sipil Volume 8 No. 3, Juni 2008.

- Mann dan Lazier. 2006. *Dynamics of Marine Ecosystems*, Third Edition. Blackwell Publishing Ltd.
- Mentayani, I., Hadinata, I. Y., & Prayitno, B. (2013). *Karakteristik Dan Formasi Keruangan Kota-Kota Berbasis Perairan Di Indonesia*. LANTING Journal of Architecture No. 2, Vol. 2, Halaman 71-82.
- Muhammad Chairul Fahmi, 2009. *Pengelolaan Daerah Aliran Sungai Jeneberang kota Makassar-Sulawesi Selatan*. (https://staff.blog.ui.ac.id/tarsoen.waryono/files/2009/12/sungai_fahmi.pdf)
- Nasir. 2015. Tingkat pelayanan air bersih perusahaan air minum kota makassar unit pengolahan Antang.
- Neitsch, dkk., 2012. *SWAT-Modflow intergration in assessing groundwter potential in the Ba River basin*.
- Puntudewo, A dkk. 2003. *Sistem Informasi Geografis. Untuk Pengelolaan Sumberdaya Alam*. Center for International Forestry Research (CIFOR). Bogor.
- Rahim, S. E. 2006. *Pengendalian Erosi Tanah dalam Rangka Pelestarian Lingkungan Hidup*. Cetakan Ketujuh. Bumi Aksara. Jakarta.
- Roestam, Sjarief dan Kodoatie, Robert J. 2010. *Tata Ruang Air*. Yogyakarta: Penerbit Andi Offset.
- Sandy, I Made. 1996. *Republik Indonesia Geografi Regional*. Edisi Ketiga. Jakarta:Jurusan Geografi FMIPA-UI-PT Indograph Bakti. Hal. 89, 90, dan 270
- Saputra, Arie And Juniah, Restu And Abro, M Akib (2014). *Water Management System Tambang Pada PIT PT. Ulima Nitra Jobsite Pt Menambang Muara Enim*. Jurnal Ilmu Teknik Unsri.
- Shesham, S. 2012. *Integrating Expert System and Geographic Information System for Spatial Decision Making*. Masters Theses & Specialist Projects. Paper 1216. Department of Computer Science Western Kentucky University, Bowling Green. Kentucky.

- Singh, Vijay P .2002. Mathematical Modeling of Watershed Hydrology. Journal of Hydrologic Engineering / Volume 7 Issue 4 - July 2002.
- Slamet, B. 2011. *Model Hidrologi Daerah Aliran Sungai Untuk Pemenuhan Kebutuhan Air Domestik*.
- Song Jaemin, Mooyoung Han, Tschungil Kim dan Jee-eun Song. 2009. *Rainwater harvesting as a sustainable water supply option in Banda Aceh*. Desalination 248: 233-240.
- Sosrodarsono, dkk. 1993, *Hidrologi Untuk Pengairan*, Pradnya Paramitha, Jakarta
- Suripin. 2004. Sistem Drainase Yang Berkelanjutan. Penerbit Andi Offset, Yogyakarta.
- Sutojo, T dkk. 2010. Kecerdasan Buatan. Penerbit Andi. Yogyakarta.
- Turban, E. 1995. Decision Support and Expert Systems Management Support Systems. 4th ed Published Englewood Cliffs, N.J: Prentice Hall.
- Triatmodjo, Bambang. (2014). Hidrologi Terapan (edisi ke-4). Yogyakarta: Beta Offset
- Widjojo, S. 1993. Pengantar Sistem Informasi Geografis. BAKOSURTANAL. Cibinong.
- Zhengyue, 2005. *Integrated planning of Stormwater Infiltration Measures : Flex A Tool for Scenario Development and Vulnerability Mapping, including Wupper River Case Study*.
- Yulistyorini, A. 2011. Pemanenan Air Hujan Sebagai Alternatif Pengelolaan Sumber Daya Air Di Perkotaan. Jurnal Teknologi dan Kejuruan. Vol.34 No. 1 : 105 – 114.

- *Interim Code Of Practice for Sustainable Drainage Systems*, 2004. National SUDS Working Group.
- Peraturan Pemerintah (PP) No. 16 Tahun 2005. Pengembangan Sistem Penyediaan Air Minum
- *United Nations Environment Programme (UNEP)*. 2001. Annual Evaluation Report. Evaluation and Oversight Unit.
- *United Nations*. 2004. *United Facilities Criteria*.
- Undang-Undang No. 26 tahun 2007. Penataan Ruang.

HASIL ANALISIS SUB DAN TUTUPAN LAHAN TAHUN 2002

No	Subbasin	Januari	Februari	Maret	April	Mei	Juni	Juli	Agustus	September	Oktober	November	Desember	Total	Klasifikasi	Penutupan Lahan
1	1	265	81	110	103	19	8	0	0	0	0	96	214	897	600-900	Sawah
2	2	266	80	111	102	19	9	0	0	0	0	96	213	897	600-900	Sawah
3	3	401	271	121	57	29	14	0	0	0	1	44	135	1,074	900-1200	Permukiman
4	3	401	271	121	57	29	14	0	0	0	1	44	135	1,074	900-1200	Sawah
5	4	374	245	108	44	22	9	0	0	0	1	36	112	952	900-1200	Permukiman
6	4	374	245	108	44	22	9	0	0	0	1	36	112	952	900-1200	Pertanian Lahan Kering Campur Semak
7	4	374	245	108	44	22	9	0	0	0	1	36	112	952	900-1200	Sawah
8	5	350	223	99	36	19	6	0	0	0	0	29	103	863	600-900	Permukiman
9	5	350	223	99	36	19	6	0	0	0	0	29	103	863	600-900	Sawah
10	6	0	0	0	0	0	0	0	0	0	0	0	0	0	0-300	Tambak
11	7	378	285	122	60	32	14	1	0	0	1	41	133	1,065	900-1200	Permukiman
12	7	378	285	122	60	32	14	1	0	0	1	41	133	1,065	900-1200	Tambak
13	8	358	267	113	52	29	11	0	0	0	0	35	121	987	900-1200	Permukiman
14	8	358	267	113	52	29	11	0	0	0	0	35	121	987	900-1200	Sawah
15	8	358	267	113	52	29	11	0	0	0	0	35	121	987	900-1200	Tambak
16	9	384	255	113	51	26	11	0	0	0	1	42	125	1,009	900-1200	Permukiman
17	9	384	255	113	51	26	11	0	0	0	1	42	125	1,009	900-1200	Sawah
18	10	259	84	107	105	19	10	0	0	0	0	93	214	892	600-900	Sawah
19	12	269	92	115	112	21	11	0	0	0	0	98	224	942	900-1200	Pertanian Lahan Kering Campur Semak
20	12	269	92	115	112	21	11	0	0	0	0	98	224	942	900-1200	Sawah
21	13	264	82	110	104	20	10	0	0	0	0	96	214	899	600-900	Sawah
22	16	377	286	122	60	32	14	1	0	0	1	40	132	1,064	900-1200	Permukiman
23	16	377	286	122	60	32	14	1	0	0	1	40	132	1,064	900-1200	Tubuh Air
24	17	389	277	120	59	31	14	0	0	0	1	44	138	1,073	900-1200	Permukiman
25	17	389	277	120	59	31	14	0	0	0	1	44	138	1,073	900-1200	Tambak
26	17	389	277	120	59	31	14	0	0	0	1	44	138	1,073	900-1200	Tubuh Air
27	20	387	278	120	59	31	14	0	0	0	1	44	138	1,073	900-1200	Permukiman
28	20	387	278	120	59	31	14	0	0	0	1	44	138	1,073	900-1200	Tambak
29	20	387	278	120	59	31	14	0	0	0	1	44	138	1,073	900-1200	Tubuh Air
30	21	346	245	104	44	25	8	0	0	0	0	34	112	920	900-1200	Permukiman
31	21	346	245	104	44	25	8	0	0	0	0	34	112	920	900-1200	Sawah
32	21	346	245	104	44	25	8	0	0	0	0	34	112	920	900-1200	Tambak
33	22	382	257	114	52	27	11	0	0	0	1	42	129	1,016	900-1200	Permukiman
34	22	382	257	114	52	27	11	0	0	0	1	42	129	1,016	900-1200	Sawah
35	22	382	257	114	52	27	11	0	0	0	1	42	129	1,016	900-1200	Tambak
36	23	0	0	0	0	0	0	0	0	0	0	0	0	0	0-300	Tambak
37	25	0	0	0	0	0	0	0	0	0	0	0	0	0	0-300	Tambak
38	26	375	286	123	60	32	14	1	0	0	1	40	132	1,063	900-1200	Permukiman
39	26	375	286	123	60	32	14	1	0	0	1	40	132	1,063	900-1200	Tambak
40	26	375	286	123	60	32	14	1	0	0	1	40	132	1,063	900-1200	Tubuh Air
41	28	0	0	0	0	0	0	0	0	0	0	0	0	0	0-300	Tambak
42	29	341	227	97	37	22	6	0	0	0	0	35	105	870	600-900	Permukiman
43	29	341	227	97	37	22	6	0	0	0	0	35	105	870	600-900	Sawah
44	29	341	227	97	37	22	6	0	0	0	0	35	105	870	600-900	Tambak
45	30	331	224	94	36	22	5	0	0	0	0	28	103	844	600-900	Permukiman
46	30	331	224	94	36	22	5	0	0	0	0	28	103	844	600-900	Sawah
47	30	331	224	94	36	22	5	0	0	0	0	28	103	844	600-900	Tambak
48	30	331	224	94	36	22	5	0	0	0	0	28	103	844	600-900	Tubuh Air
49	31	319	227	95	35	22	4	0	0	0	0	23	96	822	600-900	Permukiman
50	31	319	227	95	35	22	4	0	0	0	0	23	96	822	600-900	Sawah

51	31	319	227	95	35	22	4	0	0	0	0	23	96	822	600-900	Tambak
52	31	319	227	95	35	22	4	0	0	0	0	23	96	822	600-900	Tubuh Air
53	33	269	86	113	108	20	11	0	0	0	0	98	220	925	900-1200	Pertanian Lahan Kering Campur Semak
54	33	269	86	113	108	20	11	0	0	0	0	98	220	925	900-1200	Sawah
55	35	283	94	122	116	22	12	0	1	0	0	109	233	993	900-1200	Permukiman
56	35	283	94	122	116	22	12	0	1	0	0	109	233	993	900-1200	Pertanian Lahan Kering Campur Semak
57	35	283	94	122	116	22	12	0	1	0	0	109	233	993	900-1200	Sawah
58	36	260	87	108	107	20	10	0	0	0	0	93	216	901	900-1200	Pertanian Lahan Kering Campur Semak
59	36	260	87	108	107	20	10	0	0	0	0	93	216	901	900-1200	Sawah
60	37	262	82	109	103	19	9	0	0	0	0	93	213	892	600-900	Pertanian Lahan Kering Campur Semak
61	37	262	82	109	103	19	9	0	0	0	0	93	213	892	600-900	Sawah
62	38	255	90	106	107	20	10	0	0	0	0	91	215	894	600-900	Sawah
63	40	285	180	71	23	15	1	0	0	0	0	15	74	664	600-900	Hutan Mangrove Sekunder
64	40	285	180	71	23	15	1	0	0	0	0	15	74	664	600-900	Sawah
65	40	285	180	71	23	15	1	0	0	0	0	15	74	664	600-900	Tambak
66	41	372	246	108	45	24	9	0	0	0	0	37	120	961	900-1200	Hutan Mangrove Sekunder
67	41	372	246	108	45	24	9	0	0	0	0	37	120	961	900-1200	Permukiman
68	41	372	246	108	45	24	9	0	0	0	0	37	120	961	900-1200	Pertanian Lahan Kering Campur Semak
69	41	372	246	108	45	24	9	0	0	0	0	37	120	961	900-1200	Sawah
70	41	372	246	108	45	24	9	0	0	0	0	37	120	961	900-1200	Tambak
71	42	296	181	74	25	16	1	0	0	0	0	17	81	691	600-900	Hutan Mangrove Sekunder
72	42	296	181	74	25	16	1	0	0	0	0	17	81	691	600-900	Sawah
73	42	296	181	74	25	16	1	0	0	0	0	17	81	691	600-900	Tambak
74	43	316	222	92	33	21	4	0	0	0	0	23	94	803	600-900	Sawah
75	43	316	222	92	33	21	4	0	0	0	0	23	94	803	600-900	Tambak
76	43	316	222	92	33	21	4	0	0	0	0	23	94	803	600-900	Tubuh Air
77	44	298	198	80	27	17	2	0	0	0	0	18	83	724	600-900	Hutan Mangrove Sekunder
78	44	298	198	80	27	17	2	0	0	0	0	18	83	724	600-900	Sawah
79	44	298	198	80	27	17	2	0	0	0	0	18	83	724	600-900	Tambak
80	44	298	198	80	27	17	2	0	0	0	0	18	83	724	600-900	Tubuh Air
81	45	321	224	92	37	21	5	0	0	0	0	25	97	823	600-900	Hutan Mangrove Sekunder
82	45	321	224	92	37	21	5	0	0	0	0	25	97	823	600-900	Permukiman
83	45	321	224	92	37	21	5	0	0	0	0	25	97	823	600-900	Sawah
84	45	321	224	92	37	21	5	0	0	0	0	25	97	823	600-900	Tambak
85	45	321	224	92	37	21	5	0	0	0	0	25	97	823	600-900	Tubuh Air
86	46	305	187	78	26	17	2	0	0	0	0	20	86	720	600-900	Hutan Mangrove Sekunder
87	46	305	187	78	26	17	2	0	0	0	0	20	86	720	600-900	Sawah
88	46	305	187	78	26	17	2	0	0	0	0	20	86	720	600-900	Tambak
89	47	316	205	85	30	19	3	0	0	0	0	24	93	775	600-900	Hutan Mangrove Sekunder
90	47	316	205	85	30	19	3	0	0	0	0	24	93	775	600-900	Sawah
91	47	316	205	85	30	19	3	0	0	0	0	24	93	775	600-900	Tambak
92	48	358	231	101	39	22	6	0	0	0	0	34	111	903	900-1200	Permukiman
93	48	358	231	101	39	22	6	0	0	0	0	34	111	903	900-1200	Pertanian Lahan Kering Campur Semak
94	48	358	231	101	39	22	6	0	0	0	0	34	111	903	900-1200	Sawah
95	49	367	237	105	43	24	8	0	0	0	0	38	117	941	900-1200	Permukiman
96	49	367	237	105	43	24	8	0	0	0	0	38	117	941	900-1200	Pertanian Lahan Kering Campur Semak
97	49	367	237	105	43	24	8	0	0	0	0	38	117	941	900-1200	Sawah
98	50	234	107	99	114	21	10	0	0	0	0	78	218	882	600-900	Sawah
99	52	316	199	84	30	18	3	0	0	0	0	23	93	767	600-900	Hutan Mangrove Sekunder
100	52	316	199	84	30	18	3	0	0	0	0	23	93	767	600-900	Permukiman
101	52	316	199	84	30	18	3	0	0	0	0	23	93	767	600-900	Sawah
102	52	316	199	84	30	18	3	0	0	0	0	23	93	767	600-900	Tambak
103	53	387	259	115	52	26	11	0	0	0	1	40	129	1,021	900-1200	Permukiman

104	53	387	259	115	52	26	11	0	0	0	1	40	129	1,021	900-1200	Pertanian Lahan Kering Campur Semak
105	53	387	259	115	52	26	11	0	0	0	1	40	129	1,021	900-1200	Sawah
106	53	387	259	115	52	26	11	0	0	0	1	40	129	1,021	900-1200	Tambak
107	54	304	187	77	26	16	2	0	0	0	0	20	85	717	600-900	Hutan Mangrove Sekunder
108	54	304	187	77	26	16	2	0	0	0	0	20	85	717	600-900	Sawah
109	54	304	187	77	26	16	2	0	0	0	0	20	85	717	600-900	Tambak
110	56	280	175	69	22	14	0	0	0	0	0	13	71	644	600-900	Hutan Mangrove Sekunder
111	56	280	175	69	22	14	0	0	0	0	0	13	71	644	600-900	Tambak
112	59	270	92	116	113	22	13	0	1	0	0	98	224	948	900-1200	Permukiman
113	59	270	92	116	113	22	13	0	1	0	0	98	224	948	900-1200	Pertanian Lahan Kering Campur Semak
114	59	270	92	116	113	22	13	0	1	0	0	98	224	948	900-1200	Sawah
115	60	368	242	107	48	25	10	0	0	0	1	38	121	960	900-1200	Permukiman
116	60	368	242	107	48	25	10	0	0	0	1	38	121	960	900-1200	Sawah
117	60	368	242	107	48	25	10	0	0	0	1	38	121	960	900-1200	Semak Belukar
118	60	368	242	107	48	25	10	0	0	0	1	38	121	960	900-1200	Tambak
119	62	343	226	97	43	23	8	0	0	0	1	32	109	882	600-900	Hutan Mangrove Sekunder
120	62	343	226	97	43	23	8	0	0	0	1	32	109	882	600-900	Permukiman
121	62	343	226	97	43	23	8	0	0	0	1	32	109	882	600-900	Semak Belukar
122	62	343	226	97	43	23	8	0	0	0	1	32	109	882	600-900	Tambak
123	63	349	252	107	49	27	10	1	0	0	0	32	115	941	900-1200	Hutan Mangrove Sekunder
124	63	349	252	107	49	27	10	1	0	0	0	32	115	941	900-1200	Permukiman
125	63	349	252	107	49	27	10	1	0	0	0	32	115	941	900-1200	Sawah
126	63	349	252	107	49	27	10	1	0	0	0	32	115	941	900-1200	Tambak
127	64	285	170	69	22	14	0	0	0	0	0	14	74	647	600-900	Hutan Mangrove Sekunder
128	64	285	170	69	22	14	0	0	0	0	0	14	74	647	600-900	Tambak
129	67	375	285	124	60	32	13	1	0	0	1	39	131	1,062	900-1200	Permukiman
130	68	367	244	106	48	25	10	0	0	0	1	36	119	957	900-1200	Hutan Mangrove Sekunder
131	68	367	244	106	48	25	10	0	0	0	1	36	119	957	900-1200	Permukiman
132	68	367	244	106	48	25	10	0	0	0	1	36	119	957	900-1200	Tambak
133	70	380	255	113	51	27	11	0	0	0	1	41	130	1,009	900-1200	Permukiman
134	70	380	255	113	51	27	11	0	0	0	1	41	130	1,009	900-1200	Sawah
135	70	380	255	113	51	27	11	0	0	0	1	41	130	1,009	900-1200	Semak Belukar
136	71	340	215	93	37	21	6	0	0	0	0	32	105	850	600-900	Hutan Mangrove Sekunder
137	71	340	215	93	37	21	6	0	0	0	0	32	105	850	600-900	Permukiman
138	71	340	215	93	37	21	6	0	0	0	0	32	105	850	600-900	Sawah
139	71	340	215	93	37	21	6	0	0	0	0	32	105	850	600-900	Semak Belukar
140	71	340	215	93	37	21	6	0	0	0	0	32	105	850	600-900	Tambak
141	72	346	222	97	37	22	6	0	0	0	0	32	108	871	600-900	Permukiman
142	72	346	222	97	37	22	6	0	0	0	0	32	108	871	600-900	Pertanian Lahan Kering Campur Semak
143	72	346	222	97	37	22	6	0	0	0	0	32	108	871	600-900	Sawah
144	73	333	212	92	33	20	5	0	0	0	0	32	102	828	600-900	Permukiman
145	73	333	212	92	33	20	5	0	0	0	0	32	102	828	600-900	Pertanian Lahan Kering Campur Semak
146	73	333	212	92	33	20	5	0	0	0	0	32	102	828	600-900	Sawah
147	74	349	222	97	41	22	8	0	0	0	0	34	110	884	600-900	Permukiman
148	74	349	222	97	41	22	8	0	0	0	0	34	110	884	600-900	Sawah
149	74	349	222	97	41	22	8	0	0	0	0	34	110	884	600-900	Semak Belukar
150	75	348	228	98	42	23	8	0	0	0	0	34	109	891	600-900	Permukiman
151	75	348	228	98	42	23	8	0	0	0	0	34	109	891	600-900	Sawah
152	75	348	228	98	42	23	8	0	0	0	0	34	109	891	600-900	Semak Belukar
153	76	329	221	93	34	21	5	0	0	0	0	33	99	834	600-900	Sawah
154	77	317	224	95	34	21	5	0	0	0	0	27	95	819	600-900	Sawah
155	79	399	272	121	58	30	14	0	0	0	1	45	139	1,079	900-1200	Permukiman
156	80	387	286	124	62	33	14	1	0	0	1	45	141	1,092	900-1200	Permukiman

157	81	393	264	118	55	28	13	0	0	0	1	43	132	1,047	900-1200	Permukiman
158	81	393	264	118	55	28	13	0	0	0	1	43	132	1,047	900-1200	Pertanian Lahan Kering Campur Semak
159	81	393	264	118	55	28	13	0	0	0	1	43	132	1,047	900-1200	Sawah
160	82	318	194	83	28	17	3	0	0	0	0	24	91	758	600-900	Sawah
161	82	318	194	83	28	17	3	0	0	0	0	24	91	758	600-900	Semak Belukar
162	83	382	282	120	60	31	14	1	0	0	1	43	136	1,070	900-1200	Permukiman
163	84	354	228	100	40	22	7	0	0	0	0	32	109	894	600-900	Permukiman
164	84	354	228	100	40	22	7	0	0	0	0	32	109	894	600-900	Pertanian Lahan Kering Campur Semak
165	84	354	228	100	40	22	7	0	0	0	0	32	109	894	600-900	Sawah
166	84	354	228	100	40	22	7	0	0	0	0	32	109	894	600-900	Semak Belukar
167	92	361	268	114	52	29	10	0	0	0	0	36	123	994	900-1200	Permukiman
168	92	361	268	114	52	29	10	0	0	0	0	36	123	994	900-1200	Pertanian Lahan Kering Campur Semak
169	92	361	268	114	52	29	10	0	0	0	0	36	123	994	900-1200	Sawah
170	94	378	285	122	60	32	14	1	0	0	1	41	133	1,065	900-1200	Permukiman
171	98	331	210	90	32	20	4	0	0	0	0	28	101	817	600-900	Sawah
172	99	358	242	104	41	23	7	0	0	0	0	36	110	922	900-1200	Permukiman
173	99	358	242	104	41	23	7	0	0	0	0	36	110	922	900-1200	Pertanian Lahan Kering Campur Semak
174	99	358	242	104	41	23	7	0	0	0	0	36	110	922	900-1200	Sawah
175	101	343	218	95	33	17	5	0	0	0	0	26	96	834	600-900	Permukiman
176	101	343	218	95	33	17	5	0	0	0	0	26	96	834	600-900	Sawah
177	101	343	218	95	33	17	5	0	0	0	0	26	96	834	600-900	Semak Belukar Rawa
178	101	343	218	95	33	17	5	0	0	0	0	26	96	834	600-900	Tubuh Air
179	103	396	267	119	56	28	13	0	0	0	1	43	133	1,058	900-1200	Permukiman
180	103	396	267	119	56	28	13	0	0	0	1	43	133	1,058	900-1200	Pertanian Lahan Kering Campur Semak
181	103	396	267	119	56	28	13	0	0	0	1	43	133	1,058	900-1200	Sawah
182	103	396	267	119	56	28	13	0	0	0	1	43	133	1,058	900-1200	Semak Belukar Rawa
183	103	396	267	119	56	28	13	0	0	0	1	43	133	1,058	900-1200	Tubuh Air
184	104	369	239	104	42	21	10	0	0	0	1	37	105	928	900-1200	Permukiman
185	104	369	239	104	42	21	10	0	0	0	1	37	105	928	900-1200	Sawah
186	104	369	239	104	42	21	10	0	0	0	1	37	105	928	900-1200	Semak Belukar Rawa
187	104	369	239	104	42	21	10	0	0	0	1	37	105	928	900-1200	Tubuh Air
188	105	364	247	107	46	25	9	0	0	0	0	36	119	953	900-1200	Permukiman
189	105	364	247	107	46	25	9	0	0	0	0	36	119	953	900-1200	Pertanian Lahan Kering Campur Semak
190	105	364	247	107	46	25	9	0	0	0	0	36	119	953	900-1200	Sawah
191	105	364	247	107	46	25	9	0	0	0	0	36	119	953	900-1200	Tubuh Air
192	107	326	214	90	32	20	4	0	0	0	0	27	99	811	600-900	Sawah
193	109	333	211	91	33	20	5	0	0	0	0	32	102	827	600-900	Sawah
194	110	345	237	101	41	24	7	0	0	0	0	32	111	899	600-900	Permukiman
195	110	345	237	101	41	24	7	0	0	0	0	32	111	899	600-900	Pertanian Lahan Kering Campur Semak
196	110	345	237	101	41	24	7	0	0	0	0	32	111	899	600-900	Sawah
197	115	368	281	121	57	31	12	1	0	0	0	37	127	1,038	900-1200	Permukiman
198	115	368	281	121	57	31	12	1	0	0	0	37	127	1,038	900-1200	Pertanian Lahan Kering Campur Semak
199	116	350	260	110	47	27	8	0	0	0	0	31	117	950	900-1200	Permukiman
200	116	350	260	110	47	27	8	0	0	0	0	31	117	950	900-1200	Pertanian Lahan Kering Campur Semak
201	118	351	260	110	49	27	9	0	0	0	0	32	117	956	900-1200	Permukiman
202	118	351	260	110	49	27	9	0	0	0	0	32	117	956	900-1200	Pertanian Lahan Kering Campur Semak
203	118	351	260	110	49	27	9	0	0	0	0	32	117	956	900-1200	Sawah
204	121	350	222	98	37	21	6	0	0	0	0	33	107	874	600-900	Permukiman
205	121	350	222	98	37	21	6	0	0	0	0	33	107	874	600-900	Sawah
206	121	350	222	98	37	21	6	0	0	0	0	33	107	874	600-900	Tubuh Air
207	122	313	222	93	33	21	4	0	0	0	0	21	93	800	600-900	Sawah
208	124	315	222	92	33	21	4	0	0	0	0	22	93	802	600-900	Sawah
209	124	315	222	92	33	21	4	0	0	0	0	22	93	802	600-900	Tubuh Air

210	132	347	234	100	40	23	7	0	0	0	0	33	110	895	600-900	Permukiman
211	132	347	234	100	40	23	7	0	0	0	0	33	110	895	600-900	Sawah
212	132	347	234	100	40	23	7	0	0	0	0	33	110	895	600-900	Tubuh Air
213	133	359	233	102	40	22	8	0	0	0	0	36	108	909	900-1200	Permukiman
214	133	359	233	102	40	22	8	0	0	0	0	36	108	909	900-1200	Sawah
215	141	313	222	94	33	21	3	0	0	0	0	20	92	798	600-900	Sawah
216	145	319	220	90	33	20	3	0	0	0	0	23	96	805	600-900	Sawah
217	145	319	220	90	33	20	3	0	0	0	0	23	96	805	600-900	Tubuh Air
218	148	325	218	90	33	20	3	0	0	0	0	25	99	813	600-900	Pertanian Lahan Kering Campur Semak
219	148	325	218	90	33	20	3	0	0	0	0	25	99	813	600-900	Sawah
220	155	331	209	90	33	20	4	0	0	0	0	28	102	817	600-900	Permukiman
221	155	331	209	90	33	20	4	0	0	0	0	28	102	817	600-900	Pertanian Lahan Kering Campur Semak
222	155	331	209	90	33	20	4	0	0	0	0	28	102	817	600-900	Sawah
223	155	331	209	90	33	20	4	0	0	0	0	28	102	817	600-900	Tubuh Air
224	169	340	228	97	41	23	7	0	0	0	0	32	108	876	600-900	Permukiman
225	169	340	228	97	41	23	7	0	0	0	0	32	108	876	600-900	Pertanian Lahan Kering Campur Semak
226	169	340	228	97	41	23	7	0	0	0	0	32	108	876	600-900	Sawah
227	185	295	177	75	25	15	2	0	0	0	0	22	82	693	600-900	Sawah
228	185	295	177	75	25	15	2	0	0	0	0	22	82	693	600-900	Tubuh Air
229	189	311	222	95	33	21	3	0	0	0	0	20	91	796	600-900	Sawah

HASIL ANALISIS SUB DAN TUTUPAN LAHAN TAHUN 2007

No	Subbasin	Januari	Februari	Maret	April	Mei	Juni	Juli	Agustus	September	Oktober	November	Desember	Total	Klasifikasi	Tutupan Lahan
1	1	83	154	108	117	53	177	6	2	0	23	126	284	1,133	900-1200	Sawah
2	2	120	202	148	161	73	202	8	5	2	41	170	347	1,478	1200-1500	Permukiman
3	2	120	202	148	161	73	202	8	5	2	41	170	347	1,478	1200-1500	Sawah
4	3	150	401	245	102	43	138	3	3	1	22	44	361	1,511	1500-1800	Permukiman
5	3	150	401	245	102	43	138	3	3	1	22	44	361	1,511	1500-1800	Sawah
6	4	149	406	245	99	42	136	2	3	1	23	42	364	1,511	1500-1800	Permukiman
7	4	149	406	245	99	42	136	2	3	1	23	42	364	1,511	1500-1800	Pertanian Lahan Kering Campur Semak
8	4	149	406	245	99	42	136	2	3	1	23	42	364	1,511	1500-1800	Sawah
9	5	131	379	229	87	36	128	1	2	0	18	32	337	1,380	1200-1500	Permukiman
10	5	131	379	229	87	36	128	1	2	0	18	32	337	1,380	1200-1500	Sawah
11	6	0	0	0	0	0	0	0	0	0	0	0	0	0	0	Tambak
12	7	159	416	289	123	51	120	38	4	1	18	57	372	1,648	1500-1800	Permukiman
13	7	159	416	289	123	51	120	38	4	1	18	57	372	1,648	1500-1800	Tambak
14	8	146	391	276	110	46	107	40	3	1	14	49	345	1,530	1500-1800	Permukiman
15	8	146	391	276	110	46	107	40	3	1	14	49	345	1,530	1500-1800	Sawah
16	8	146	391	276	110	46	107	40	3	1	14	49	345	1,530	1500-1800	Tambak
17	9	162	419	257	112	47	144	5	4	1	25	50	379	1,604	1500-1800	Permukiman
18	9	162	419	257	112	47	144	5	4	1	25	50	379	1,604	1500-1800	Sawah
19	10	148	230	174	188	85	218	13	7	3	52	199	383	1,699	1500-1800	Sawah
20	12	140	222	169	182	83	196	29	6	2	49	192	372	1,643	1500-1800	Permukiman
21	12	140	222	169	182	83	196	29	6	2	49	192	372	1,643	1500-1800	Pertanian Lahan Kering Campur Semak
22	12	140	222	169	182	83	196	29	6	2	49	192	372	1,643	1500-1800	Sawah
23	13	180	266	205	221	101	239	14	9	4	69	233	430	1,971	>1800	Permukiman
24	13	180	266	205	221	101	239	14	9	4	69	233	430	1,971	>1800	Sawah
25	16	158	415	291	123	51	117	41	4	1	18	57	369	1,645	1500-1800	Permukiman
26	16	158	415	291	123	51	117	41	4	1	18	57	369	1,645	1500-1800	Tubuh Air
27	17	164	429	273	122	51	142	14	4	1	22	55	391	1,668	1500-1800	Permukiman
28	17	164	429	273	122	51	142	14	4	1	22	55	391	1,668	1500-1800	Tambak
29	17	164	429	273	122	51	142	14	4	1	22	55	391	1,668	1500-1800	Tubuh Air
30	20	163	428	276	122	51	139	17	4	1	22	56	389	1,667	1500-1800	Permukiman
31	20	163	428	276	122	51	139	17	4	1	22	56	389	1,667	1500-1800	Tambak
32	20	163	428	276	122	51	139	17	4	1	22	56	389	1,667	1500-1800	Tubuh Air
33	21	135	368	253	94	39	105	31	2	0	12	41	324	1,405	1200-1500	Permukiman
34	21	135	368	253	94	39	105	31	2	0	12	41	324	1,405	1200-1500	Sawah
35	21	135	368	253	94	39	105	31	2	0	12	41	324	1,405	1200-1500	Tambak
36	22	160	413	258	111	47	140	8	3	1	23	51	374	1,589	1500-1800	Permukiman
37	22	160	413	258	111	47	140	8	3	1	23	51	374	1,589	1500-1800	Sawah
38	22	160	413	258	111	47	140	8	3	1	23	51	374	1,589	1500-1800	Tambak
39	23	0	0	0	0	0	0	0	0	0	0	0	0	0	0	Tambak
40	25	0	0	0	0	0	0	0	0	0	0	0	0	0	0	Tambak
41	26	158	413	293	123	52	114	43	4	1	18	57	366	1,641	1500-1800	Permukiman
42	26	158	413	293	123	52	114	43	4	1	18	57	366	1,641	1500-1800	Tambak

43	26	158	413	293	123	52	114	43	4	1	18	57	366	1,641	1500-1800	Tubuh Air
44	28	0	0	0	0	0	0	0	0	0	0	0	0	0	0	Tambak
45	29	135	367	238	88	37	115	16	2	0	14	38	327	1,376	1200-1500	Permukiman
46	29	135	367	238	88	37	115	16	2	0	14	38	327	1,376	1200-1500	Sawah
47	29	135	367	238	88	37	115	16	2	0	14	38	327	1,376	1200-1500	Tambak
48	30	124	359	233	84	35	112	16	1	0	9	34	320	1,327	1200-1500	Permukiman
49	30	124	359	233	84	35	112	16	1	0	9	34	320	1,327	1200-1500	Sawah
50	30	124	359	233	84	35	112	16	1	0	9	34	320	1,327	1200-1500	Tambak
51	30	124	359	233	84	35	112	16	1	0	9	34	320	1,327	1200-1500	Tubuh Air
52	31	119	342	245	83	35	87	39	1	0	6	33	295	1,284	1200-1500	Permukiman
53	31	119	342	245	83	35	87	39	1	0	6	33	295	1,284	1200-1500	Sawah
54	31	119	342	245	83	35	87	39	1	0	6	33	295	1,284	1200-1500	Tambak
55	31	119	342	245	83	35	87	39	1	0	6	33	295	1,284	1200-1500	Tubuh Air
56	33	100	176	126	138	61	186	11	2	1	28	148	315	1,292	1200-1500	Pertanian Lahan Kering Campur Semak
57	33	100	176	126	138	61	186	11	2	1	28	148	315	1,292	1200-1500	Sawah
58	35	100	175	126	136	60	186	10	3	1	32	147	314	1,290	1200-1500	Permukiman
59	35	100	175	126	136	60	186	10	3	1	32	147	314	1,290	1200-1500	Pertanian Lahan Kering Campur Semak
60	35	100	175	126	136	60	186	10	3	1	32	147	314	1,290	1200-1500	Sawah
61	36	97	173	125	136	60	178	17	2	0	26	146	312	1,272	1200-1500	Pertanian Lahan Kering Campur Semak
62	36	97	173	125	136	60	178	17	2	0	26	146	312	1,272	1200-1500	Sawah
63	37	96	174	125	136	60	186	9	2	1	28	145	313	1,275	1200-1500	Pertanian Lahan Kering Campur Semak
64	37	96	174	125	136	60	186	9	2	1	28	145	313	1,275	1200-1500	Sawah
65	38	97	173	125	136	60	173	22	2	0	26	146	311	1,272	1200-1500	Sawah
66	40	96	301	193	59	25	92	14	0	0	4	20	266	1,071	900-1200	Hutan Mangrove Sekunder
67	40	96	301	193	59	25	92	14	0	0	4	20	266	1,071	900-1200	Sawah
68	40	96	301	193	59	25	92	14	0	0	4	20	266	1,071	900-1200	Tambak
69	41	150	406	248	103	43	137	4	3	1	21	44	365	1,524	1500-1800	Hutan Mangrove Sekunder
70	41	150	406	248	103	43	137	4	3	1	21	44	365	1,524	1500-1800	Permukiman
71	41	150	406	248	103	43	137	4	3	1	21	44	365	1,524	1500-1800	Pertanian Lahan Kering Campur Semak
72	41	150	406	248	103	43	137	4	3	1	21	44	365	1,524	1500-1800	Sawah
73	41	150	406	248	103	43	137	4	3	1	21	44	365	1,524	1500-1800	Tambak
74	42	100	314	193	62	26	103	6	0	0	6	21	278	1,109	900-1200	Hutan Mangrove Sekunder
75	42	100	314	193	62	26	103	6	0	0	6	21	278	1,109	900-1200	Sawah
76	42	100	314	193	62	26	103	6	0	0	6	21	278	1,109	900-1200	Tambak
77	43	116	338	239	79	33	89	35	1	0	6	31	293	1,259	1200-1500	Sawah
78	43	116	338	239	79	33	89	35	1	0	6	31	293	1,259	1200-1500	Tambak
79	43	116	338	239	79	33	89	35	1	0	6	31	293	1,259	1200-1500	Tubuh Air
80	44	104	316	214	68	29	89	25	0	0	5	25	276	1,152	900-1200	Hutan Mangrove Sekunder
81	44	104	316	214	68	29	89	25	0	0	5	25	276	1,152	900-1200	Sawah
82	44	104	316	214	68	29	89	25	0	0	5	25	276	1,152	900-1200	Tambak
83	44	104	316	214	68	29	89	25	0	0	5	25	276	1,152	900-1200	Tubuh Air
84	45	120	346	236	84	35	98	28	1	0	9	34	305	1,296	1200-1500	Hutan Mangrove Sekunder
85	45	120	346	236	84	35	98	28	1	0	9	34	305	1,296	1200-1500	Permukiman
86	45	120	346	236	84	35	98	28	1	0	9	34	305	1,296	1200-1500	Sawah
87	45	120	346	236	84	35	98	28	1	0	9	34	305	1,296	1200-1500	Tambak

88	45	120	346	236	84	35	98	28	1	0	9	34	305	1,296	1200-1500	Tubuh Air
89	46	105	325	197	66	28	109	3	0	0	7	23	288	1,151	900-1200	Hutan Mangrove Sekunder
90	46	105	325	197	66	28	109	3	0	0	7	23	288	1,151	900-1200	Sawah
91	46	105	325	197	66	28	109	3	0	0	7	23	288	1,151	900-1200	Tambak
92	47	113	340	215	74	30	108	11	1	0	7	27	302	1,228	1200-1500	Hutan Mangrove Sekunder
93	47	113	340	215	74	30	108	11	1	0	7	27	302	1,228	1200-1500	Sawah
94	47	113	340	215	74	30	108	11	1	0	7	27	302	1,228	1200-1500	Tambak
95	48	144	398	242	96	39	132	3	2	0	19	40	356	1,470	1200-1500	Permukiman
96	48	144	398	242	96	39	132	3	2	0	19	40	356	1,470	1200-1500	Pertanian Lahan Kering Campur Semak
97	48	144	398	242	96	39	132	3	2	0	19	40	356	1,470	1200-1500	Sawah
98	49	153	408	249	104	43	139	3	3	1	22	45	367	1,537	1500-1800	Permukiman
99	49	153	408	249	104	43	139	3	3	1	22	45	367	1,537	1500-1800	Pertanian Lahan Kering Campur Semak
100	49	153	408	249	104	43	139	3	3	1	22	45	367	1,537	1500-1800	Sawah
101	50	94	170	129	137	63	130	66	2	0	24	143	300	1,258	1200-1500	Sawah
102	52	112	340	209	73	31	113	6	1	0	8	26	301	1,219	1200-1500	Hutan Mangrove Sekunder
103	52	112	340	209	73	31	113	6	1	0	8	26	301	1,219	1200-1500	Permukiman
104	52	112	340	209	73	31	113	6	1	0	8	26	301	1,219	1200-1500	Sawah
105	52	112	340	209	73	31	113	6	1	0	8	26	301	1,219	1200-1500	Tambak
106	53	163	425	261	115	48	145	5	4	1	26	51	385	1,627	1500-1800	Permukiman
107	53	163	425	261	115	48	145	5	4	1	26	51	385	1,627	1500-1800	Pertanian Lahan Kering Campur Semak
108	53	163	425	261	115	48	145	5	4	1	26	51	385	1,627	1500-1800	Sawah
109	53	163	425	261	115	48	145	5	4	1	26	51	385	1,627	1500-1800	Tambak
110	54	105	323	197	66	28	107	5	0	0	6	23	286	1,146	900-1200	Hutan Mangrove Sekunder
111	54	105	323	197	66	28	107	5	0	0	6	23	286	1,146	900-1200	Sawah
112	54	105	323	197	66	28	107	5	0	0	6	23	286	1,146	900-1200	Tambak
113	56	92	294	190	56	25	88	15	0	0	4	19	259	1,042	900-1200	Hutan Mangrove Sekunder
114	56	92	294	190	56	25	88	15	0	0	4	19	259	1,042	900-1200	Tambak
115	59	102	179	130	141	63	182	16	3	1	30	151	319	1,317	1200-1500	Permukiman
116	59	102	179	130	141	63	182	16	3	1	30	151	319	1,317	1200-1500	Pertanian Lahan Kering Campur Semak
117	59	102	179	130	141	63	182	16	3	1	30	151	319	1,317	1200-1500	Sawah
118	60	149	396	245	103	44	135	7	3	1	21	45	357	1,506	1500-1800	Permukiman
119	60	149	396	245	103	44	135	7	3	1	21	45	357	1,506	1500-1800	Sawah
120	60	149	396	245	103	44	135	7	3	1	21	45	357	1,506	1500-1800	Semak Belukar
121	60	149	396	245	103	44	135	7	3	1	21	45	357	1,506	1500-1800	Tambak
122	62	133	371	230	93	39	126	7	2	1	16	38	335	1,389	1200-1500	Hutan Mangrove Sekunder
123	62	133	371	230	93	39	126	7	2	1	16	38	335	1,389	1200-1500	Permukiman
124	62	133	371	230	93	39	126	7	2	1	16	38	335	1,389	1200-1500	Semak Belukar
125	62	133	371	230	93	39	126	7	2	1	16	38	335	1,389	1200-1500	Tambak
126	63	142	388	253	103	43	122	20	3	1	16	45	349	1,483	1200-1500	Hutan Mangrove Sekunder
127	63	142	388	253	103	43	122	20	3	1	16	45	349	1,483	1200-1500	Permukiman
128	63	142	388	253	103	43	122	20	3	1	16	45	349	1,483	1200-1500	Sawah
129	63	142	388	253	103	43	122	20	3	1	16	45	349	1,483	1200-1500	Tambak
130	64	94	300	183	56	24	99	5	0	0	5	18	265	1,048	900-1200	Hutan Mangrove Sekunder
131	64	94	300	183	56	24	99	5	0	0	5	18	265	1,048	900-1200	Tambak
132	67	157	411	295	124	52	111	47	4	1	17	58	360	1,637	1500-1800	Permukiman

133	68	155	413	254	111	47	141	6	3	1	22	48	374	1,574	1500-1800	Hutan Mangrove Sekunder
134	68	155	413	254	111	47	141	6	3	1	22	48	374	1,574	1500-1800	Permukiman
135	68	155	413	254	111	47	141	6	3	1	22	48	374	1,574	1500-1800	Tambak
136	70	161	421	260	114	47	144	6	3	1	23	51	381	1,612	1500-1800	Permukiman
137	70	161	421	260	114	47	144	6	3	1	23	51	381	1,612	1500-1800	Sawah
138	70	161	421	260	114	47	144	6	3	1	23	51	381	1,612	1500-1800	Semak Belukar
139	71	129	363	221	85	36	125	3	2	0	15	34	325	1,338	1200-1500	Hutan Mangrove Sekunder
140	71	129	363	221	85	36	125	3	2	0	15	34	325	1,338	1200-1500	Permukiman
141	71	129	363	221	85	36	125	3	2	0	15	34	325	1,338	1200-1500	Sawah
142	71	129	363	221	85	36	125	3	2	0	15	34	325	1,338	1200-1500	Semak Belukar
143	71	129	363	221	85	36	125	3	2	0	15	34	325	1,338	1200-1500	Tambak
144	72	143	396	242	97	40	133	3	2	0	17	40	355	1,469	1200-1500	Permukiman
145	72	143	396	242	97	40	133	3	2	0	17	40	355	1,469	1200-1500	Pertanian Lahan Kering Campur Semak
146	72	143	396	242	97	40	133	3	2	0	17	40	355	1,469	1200-1500	Sawah
147	73	137	388	238	93	38	129	4	2	0	16	38	347	1,428	1200-1500	Permukiman
148	73	137	388	238	93	38	129	4	2	0	16	38	347	1,428	1200-1500	Pertanian Lahan Kering Campur Semak
149	73	137	388	238	93	38	129	4	2	0	16	38	347	1,428	1200-1500	Sawah
150	74	139	379	233	93	40	129	5	2	0	18	39	340	1,417	1200-1500	Permukiman
151	74	139	379	233	93	40	129	5	2	0	18	39	340	1,417	1200-1500	Sawah
152	74	139	379	233	93	40	129	5	2	0	18	39	340	1,417	1200-1500	Semak Belukar
153	75	140	381	236	96	41	129	7	3	1	18	42	343	1,436	1200-1500	Permukiman
154	75	140	381	236	96	41	129	7	3	1	18	42	343	1,436	1200-1500	Sawah
155	75	140	381	236	96	41	129	7	3	1	18	42	343	1,436	1200-1500	Semak Belukar
156	76	140	378	251	93	38	112	22	2	0	13	42	337	1,429	1200-1500	Sawah
157	77	131	368	262	95	39	94	40	2	0	11	42	318	1,401	1200-1500	Sawah
158	79	170	435	269	122	51	151	6	4	1	27	56	396	1,688	1500-1800	Permukiman
159	80	169	421	289	124	52	125	34	4	1	22	63	378	1,682	1500-1800	Permukiman
160	81	165	428	262	117	49	148	4	4	1	26	52	388	1,644	1500-1800	Permukiman
161	81	165	428	262	117	49	148	4	4	1	26	52	388	1,644	1500-1800	Pertanian Lahan Kering Campur Semak
162	81	165	428	262	117	49	148	4	4	1	26	52	388	1,644	1500-1800	Sawah
163	82	123	362	218	81	33	122	1	1	0	13	30	323	1,307	1200-1500	Sawah
164	82	123	362	218	81	33	122	1	1	0	13	30	323	1,307	1200-1500	Semak Belukar
165	83	161	422	282	122	51	130	27	4	1	20	56	382	1,659	1500-1800	Permukiman
166	84	138	389	235	94	39	131	1	2	0	19	36	348	1,434	1200-1500	Permukiman
167	84	138	389	235	94	39	131	1	2	0	19	36	348	1,434	1200-1500	Pertanian Lahan Kering Campur Semak
168	84	138	389	235	94	39	131	1	2	0	19	36	348	1,434	1200-1500	Sawah
169	84	138	389	235	94	39	131	1	2	0	19	36	348	1,434	1200-1500	Semak Belukar
170	92	148	393	277	110	46	107	40	3	1	15	51	346	1,537	1500-1800	Permukiman
171	92	148	393	277	110	46	107	40	3	1	15	51	346	1,537	1500-1800	Pertanian Lahan Kering Campur Semak
172	92	148	393	277	110	46	107	40	3	1	15	51	346	1,537	1500-1800	Sawah
173	94	159	416	289	123	51	120	38	4	1	18	57	372	1,648	1500-1800	Permukiman
174	98	136	386	236	92	37	128	5	1	0	14	37	345	1,416	1200-1500	Sawah
175	99	141	388	247	95	39	121	13	2	0	17	40	344	1,447	1200-1500	Permukiman
176	99	141	388	247	95	39	121	13	2	0	17	40	344	1,447	1200-1500	Pertanian Lahan Kering Campur Semak
177	99	141	388	247	95	39	121	13	2	0	17	40	344	1,447	1200-1500	Sawah

178	101	135	392	236	90	37	127	1	2	0	19	34	349	1,424	1200-1500	Permukiman
179	101	135	392	236	90	37	127	1	2	0	19	34	349	1,424	1200-1500	Sawah
180	101	135	392	236	90	37	127	1	2	0	19	34	349	1,424	1200-1500	Semak Belukar Rawa
181	101	135	392	236	90	37	127	1	2	0	19	34	349	1,424	1200-1500	Tubuh Air
182	103	168	433	265	119	51	150	4	4	1	27	53	393	1,669	1500-1800	Permukiman
183	103	168	433	265	119	51	150	4	4	1	27	53	393	1,669	1500-1800	Pertanian Lahan Kering Campur Semak
184	103	168	433	265	119	51	150	4	4	1	27	53	393	1,669	1500-1800	Sawah
185	103	168	433	265	119	51	150	4	4	1	27	53	393	1,669	1500-1800	Semak Belukar Rawa
186	103	168	433	265	119	51	150	4	4	1	27	53	393	1,669	1500-1800	Tubuh Air
187	104	145	398	240	95	40	132	1	3	1	22	39	357	1,475	1200-1500	Permukiman
188	104	145	398	240	95	40	132	1	3	1	22	39	357	1,475	1200-1500	Sawah
189	104	145	398	240	95	40	132	1	3	1	22	39	357	1,475	1200-1500	Semak Belukar Rawa
190	104	145	398	240	95	40	132	1	3	1	22	39	357	1,475	1200-1500	Tubuh Air
191	105	152	405	256	106	44	131	12	3	1	19	47	364	1,538	1500-1800	Permukiman
192	105	152	405	256	106	44	131	12	3	1	19	47	364	1,538	1500-1800	Pertanian Lahan Kering Campur Semak
193	105	152	405	256	106	44	131	12	3	1	19	47	364	1,538	1500-1800	Sawah
194	105	152	405	256	106	44	131	12	3	1	19	47	364	1,538	1500-1800	Tubuh Air
195	107	134	382	241	92	36	121	11	1	0	11	38	342	1,409	1200-1500	Sawah
196	109	136	388	237	93	38	129	4	2	0	16	38	347	1,427	1200-1500	Sawah
197	110	143	394	254	101	41	124	16	2	0	15	44	353	1,487	1200-1500	Permukiman
198	110	143	394	254	101	41	124	16	2	0	15	44	353	1,487	1200-1500	Pertanian Lahan Kering Campur Semak
199	110	143	394	254	101	41	124	16	2	0	15	44	353	1,487	1200-1500	Sawah
200	115	153	404	291	120	50	107	48	3	1	16	55	354	1,601	1500-1800	Permukiman
201	115	153	404	291	120	50	107	48	3	1	16	55	354	1,601	1500-1800	Pertanian Lahan Kering Campur Semak
202	116	139	381	273	104	43	98	43	2	0	11	46	332	1,473	1200-1500	Permukiman
203	116	139	381	273	104	43	98	43	2	0	11	46	332	1,473	1200-1500	Pertanian Lahan Kering Campur Semak
204	118	145	391	278	110	45	103	43	3	1	13	49	342	1,522	1500-1800	Permukiman
205	118	145	391	278	110	45	103	43	3	1	13	49	342	1,522	1500-1800	Pertanian Lahan Kering Campur Semak
206	118	145	391	278	110	45	103	43	3	1	13	49	342	1,522	1500-1800	Sawah
207	121	143	396	239	96	39	134	1	2	0	19	39	355	1,465	1200-1500	Permukiman
208	121	143	396	239	96	39	134	1	2	0	19	39	355	1,465	1200-1500	Sawah
209	121	143	396	239	96	39	134	1	2	0	19	39	355	1,465	1200-1500	Tubuh Air
210	122	128	363	262	93	38	89	44	1	0	8	39	312	1,378	1200-1500	Sawah
211	124	129	365	260	93	38	93	40	1	0	8	39	317	1,383	1200-1500	Sawah
212	124	129	365	260	93	38	93	40	1	0	8	39	317	1,383	1200-1500	Tubuh Air
213	132	146	395	253	101	41	125	15	2	0	16	45	355	1,495	1200-1500	Permukiman
214	132	146	395	253	101	41	125	15	2	0	16	45	355	1,495	1200-1500	Sawah
215	132	146	395	253	101	41	125	15	2	0	16	45	355	1,495	1200-1500	Tubuh Air
216	133	149	406	247	100	41	135	3	3	0	21	43	364	1,513	1500-1800	Permukiman
217	133	149	406	247	100	41	135	3	3	0	21	43	364	1,513	1500-1800	Sawah
218	141	128	362	263	94	38	87	45	1	0	8	39	310	1,376	1200-1500	Sawah
219	145	131	372	252	92	37	104	28	1	0	9	39	329	1,396	1200-1500	Sawah
220	145	131	372	252	92	37	104	28	1	0	9	39	329	1,396	1200-1500	Tubuh Air
221	148	133	378	245	92	37	114	18	1	0	10	38	337	1,404	1200-1500	Sawah
222	155	131	376	229	88	35	125	4	1	0	13	35	336	1,375	1200-1500	Permukiman

223	155	131	376	229	88	35	125	4	1	0	13	35	336	1,375	1200-1500	Sawah
224	155	131	376	229	88	35	125	4	1	0	13	35	336	1,375	1200-1500	Tubuh Air
225	169	137	380	237	95	39	126	10	2	0	15	40	342	1,424	1200-1500	Permukiman
226	169	137	380	237	95	39	126	10	2	0	15	40	342	1,424	1200-1500	Pertanian Lahan Kering Campur Semak
227	169	137	380	237	95	39	126	10	2	0	15	40	342	1,424	1200-1500	Sawah
228	185	116	343	206	74	30	116	3	1	0	11	29	306	1,235	1200-1500	Sawah
229	185	116	343	206	74	30	116	3	1	0	11	29	306	1,235	1200-1500	Tubuh Air
230	189	127	359	265	95	39	83	50	1	0	7	39	304	1,369	1200-1500	Sawah
231	12	140	222	169	182	83	196	29	6	2	49	192	372	1,643	1500-1800	Pertanian Lahan Kering Campur Semak
232	12	140	222	169	182	83	196	29	6	2	49	192	372	1,643	1500-1800	Sawah
233	33	100	176	126	138	61	186	11	2	1	28	148	315	1,292	1200-1500	Pertanian Lahan Kering Campur Semak
234	33	100	176	126	138	61	186	11	2	1	28	148	315	1,292	1200-1500	Sawah
235	35	100	175	126	136	60	186	10	3	1	32	147	314	1,290	1200-1500	Pertanian Lahan Kering Campur Semak
236	35	100	175	126	136	60	186	10	3	1	32	147	314	1,290	1200-1500	Sawah
237	36	97	173	125	136	60	178	17	2	0	26	146	312	1,272	1200-1500	Pertanian Lahan Kering Campur Semak
238	36	97	173	125	136	60	178	17	2	0	26	146	312	1,272	1200-1500	Sawah
239	37	96	174	125	136	60	186	9	2	1	28	145	313	1,275	1200-1500	Pertanian Lahan Kering Campur Semak
240	37	96	174	125	136	60	186	9	2	1	28	145	313	1,275	1200-1500	Sawah
241	41	150	406	248	103	43	137	4	3	1	21	44	365	1,524	1500-1800	Permukiman
242	41	150	406	248	103	43	137	4	3	1	21	44	365	1,524	1500-1800	Sawah
243	41	150	406	248	103	43	137	4	3	1	21	44	365	1,524	1500-1800	Pertanian Lahan Kering Campur Semak
244	41	150	406	248	103	43	137	4	3	1	21	44	365	1,524	1500-1800	Sawah
245	41	150	406	248	103	43	137	4	3	1	21	44	365	1,524	1500-1800	Sawah
246	41	150	406	248	103	43	137	4	3	1	21	44	365	1,524	1500-1800	Tambak
247	48	144	398	242	96	39	132	3	2	0	19	40	356	1,470	1200-1500	Permukiman
248	48	144	398	242	96	39	132	3	2	0	19	40	356	1,470	1200-1500	Sawah
249	48	144	398	242	96	39	132	3	2	0	19	40	356	1,470	1200-1500	Pertanian Lahan Kering Campur Semak
250	48	144	398	242	96	39	132	3	2	0	19	40	356	1,470	1200-1500	Sawah
251	49	153	408	249	104	43	139	3	3	1	22	45	367	1,537	1500-1800	Permukiman
252	49	153	408	249	104	43	139	3	3	1	22	45	367	1,537	1500-1800	Sawah
253	49	153	408	249	104	43	139	3	3	1	22	45	367	1,537	1500-1800	Pertanian Lahan Kering Campur Semak
254	49	153	408	249	104	43	139	3	3	1	22	45	367	1,537	1500-1800	Sawah
255	53	163	425	261	115	48	145	5	4	1	26	51	385	1,627	1500-1800	Permukiman
256	53	163	425	261	115	48	145	5	4	1	26	51	385	1,627	1500-1800	Sawah
257	53	163	425	261	115	48	145	5	4	1	26	51	385	1,627	1500-1800	Pertanian Lahan Kering Campur Semak
258	53	163	425	261	115	48	145	5	4	1	26	51	385	1,627	1500-1800	Sawah
259	59	102	179	130	141	63	182	16	3	1	30	151	319	1,317	1200-1500	Permukiman
260	59	102	179	130	141	63	182	16	3	1	30	151	319	1,317	1200-1500	Sawah
261	59	102	179	130	141	63	182	16	3	1	30	151	319	1,317	1200-1500	Pertanian Lahan Kering Campur Semak
262	59	102	179	130	141	63	182	16	3	1	30	151	319	1,317	1200-1500	Sawah
263	70	161	421	260	114	47	144	6	3	1	23	51	381	1,612	1500-1800	Permukiman
264	70	161	421	260	114	47	144	6	3	1	23	51	381	1,612	1500-1800	Sawah
265	72	143	396	242	97	40	133	3	2	0	17	40	355	1,469	1200-1500	Permukiman
266	72	143	396	242	97	40	133	3	2	0	17	40	355	1,469	1200-1500	Sawah
267	72	143	396	242	97	40	133	3	2	0	17	40	355	1,469	1200-1500	Pertanian Lahan Kering Campur Semak

268	72	143	396	242	97	40	133	3	2	0	17	40	355	1,469	1200-1500	Sawah
269	73	137	388	238	93	38	129	4	2	0	16	38	347	1,428	1200-1500	Pertanian Lahan Kering Campur Semak
270	73	137	388	238	93	38	129	4	2	0	16	38	347	1,428	1200-1500	Sawah
271	74	139	379	233	93	40	129	5	2	0	18	39	340	1,417	1200-1500	Permukiman
272	74	139	379	233	93	40	129	5	2	0	18	39	340	1,417	1200-1500	Sawah
273	74	139	379	233	93	40	129	5	2	0	18	39	340	1,417	1200-1500	Sawah
274	74	139	379	233	93	40	129	5	2	0	18	39	340	1,417	1200-1500	Semak Belukar
275	75	140	381	236	96	41	129	7	3	1	18	42	343	1,436	1200-1500	Permukiman
276	75	140	381	236	96	41	129	7	3	1	18	42	343	1,436	1200-1500	Sawah
277	75	140	381	236	96	41	129	7	3	1	18	42	343	1,436	1200-1500	Sawah
278	75	140	381	236	96	41	129	7	3	1	18	42	343	1,436	1200-1500	Semak Belukar
279	82	123	362	218	81	33	122	1	1	0	13	30	323	1,307	1200-1500	Sawah
280	82	123	362	218	81	33	122	1	1	0	13	30	323	1,307	1200-1500	Semak Belukar
281	84	138	389	235	94	39	131	1	2	0	19	36	348	1,434	1200-1500	Permukiman
282	84	138	389	235	94	39	131	1	2	0	19	36	348	1,434	1200-1500	Sawah
283	101	135	392	236	90	37	127	1	2	0	19	34	349	1,424	1200-1500	Permukiman
284	101	135	392	236	90	37	127	1	2	0	19	34	349	1,424	1200-1500	Sawah
285	101	135	392	236	90	37	127	1	2	0	19	34	349	1,424	1200-1500	Sawah
286	101	135	392	236	90	37	127	1	2	0	19	34	349	1,424	1200-1500	Semak Belukar Rawa
287	103	168	433	265	119	51	150	4	4	1	27	53	393	1,669	1500-1800	Permukiman
288	103	168	433	265	119	51	150	4	4	1	27	53	393	1,669	1500-1800	Sawah
289	103	168	433	265	119	51	150	4	4	1	27	53	393	1,669	1500-1800	Sawah
290	103	168	433	265	119	51	150	4	4	1	27	53	393	1,669	1500-1800	Tubuh Air
291	104	145	398	240	95	40	132	1	3	1	22	39	357	1,475	1200-1500	Sawah
292	104	145	398	240	95	40	132	1	3	1	22	39	357	1,475	1200-1500	Semak Belukar Rawa
293	105	152	405	256	106	44	131	12	3	1	19	47	364	1,538	1500-1800	Permukiman
294	105	152	405	256	106	44	131	12	3	1	19	47	364	1,538	1500-1800	Sawah
295	105	152	405	256	106	44	131	12	3	1	19	47	364	1,538	1500-1800	Sawah
296	105	152	405	256	106	44	131	12	3	1	19	47	364	1,538	1500-1800	Tubuh Air
297	110	143	394	254	101	41	124	16	2	0	15	44	353	1,487	1200-1500	Permukiman
298	110	143	394	254	101	41	124	16	2	0	15	44	353	1,487	1200-1500	Sawah
299	118	145	391	278	110	45	103	43	3	1	13	49	342	1,522	1500-1800	Permukiman
300	118	145	391	278	110	45	103	43	3	1	13	49	342	1,522	1500-1800	Sawah
301	118	145	391	278	110	45	103	43	3	1	13	49	342	1,522	1500-1800	Pertanian Lahan Kering Campur Semak
302	118	145	391	278	110	45	103	43	3	1	13	49	342	1,522	1500-1800	Sawah
303	121	143	396	239	96	39	134	1	2	0	19	39	355	1,465	1200-1500	Permukiman
304	121	143	396	239	96	39	134	1	2	0	19	39	355	1,465	1200-1500	Sawah
305	121	143	396	239	96	39	134	1	2	0	19	39	355	1,465	1200-1500	Sawah
306	121	143	396	239	96	39	134	1	2	0	19	39	355	1,465	1200-1500	Tubuh Air
307	124	129	365	260	93	38	93	40	1	0	8	39	317	1,383	1200-1500	Sawah
308	124	129	365	260	93	38	93	40	1	0	8	39	317	1,383	1200-1500	Tubuh Air
309	132	146	395	253	101	41	125	15	2	0	16	45	355	1,495	1200-1500	Permukiman
310	132	146	395	253	101	41	125	15	2	0	16	45	355	1,495	1200-1500	Sawah
311	132	146	395	253	101	41	125	15	2	0	16	45	355	1,495	1200-1500	Sawah
312	132	146	395	253	101	41	125	15	2	0	16	45	355	1,495	1200-1500	Tubuh Air

313	133	149	406	247	100	41	135	3	3	0	21	43	364	1,513	1500-1800	Permukiman
314	133	149	406	247	100	41	135	3	3	0	21	43	364	1,513	1500-1800	Sawah
315	145	131	372	252	92	37	104	28	1	0	9	39	329	1,396	1200-1500	Sawah
316	145	131	372	252	92	37	104	28	1	0	9	39	329	1,396	1200-1500	Tubuh Air
317	155	131	376	229	88	35	125	4	1	0	13	35	336	1,375	1200-1500	Permukiman
318	155	131	376	229	88	35	125	4	1	0	13	35	336	1,375	1200-1500	Sawah
319	155	131	376	229	88	35	125	4	1	0	13	35	336	1,375	1200-1500	Sawah
320	155	131	376	229	88	35	125	4	1	0	13	35	336	1,375	1200-1500	Tubuh Air
321	169	137	380	237	95	39	126	10	2	0	15	40	342	1,424	1200-1500	Permukiman
322	169	137	380	237	95	39	126	10	2	0	15	40	342	1,424	1200-1500	Sawah
323	169	137	380	237	95	39	126	10	2	0	15	40	342	1,424	1200-1500	Pertanian Lahan Kering Campur Semak
324	169	137	380	237	95	39	126	10	2	0	15	40	342	1,424	1200-1500	Sawah
325	185	116	343	206	74	30	116	3	1	0	11	29	306	1,235	1200-1500	Sawah
326	185	116	343	206	74	30	116	3	1	0	11	29	306	1,235	1200-1500	Tubuh Air

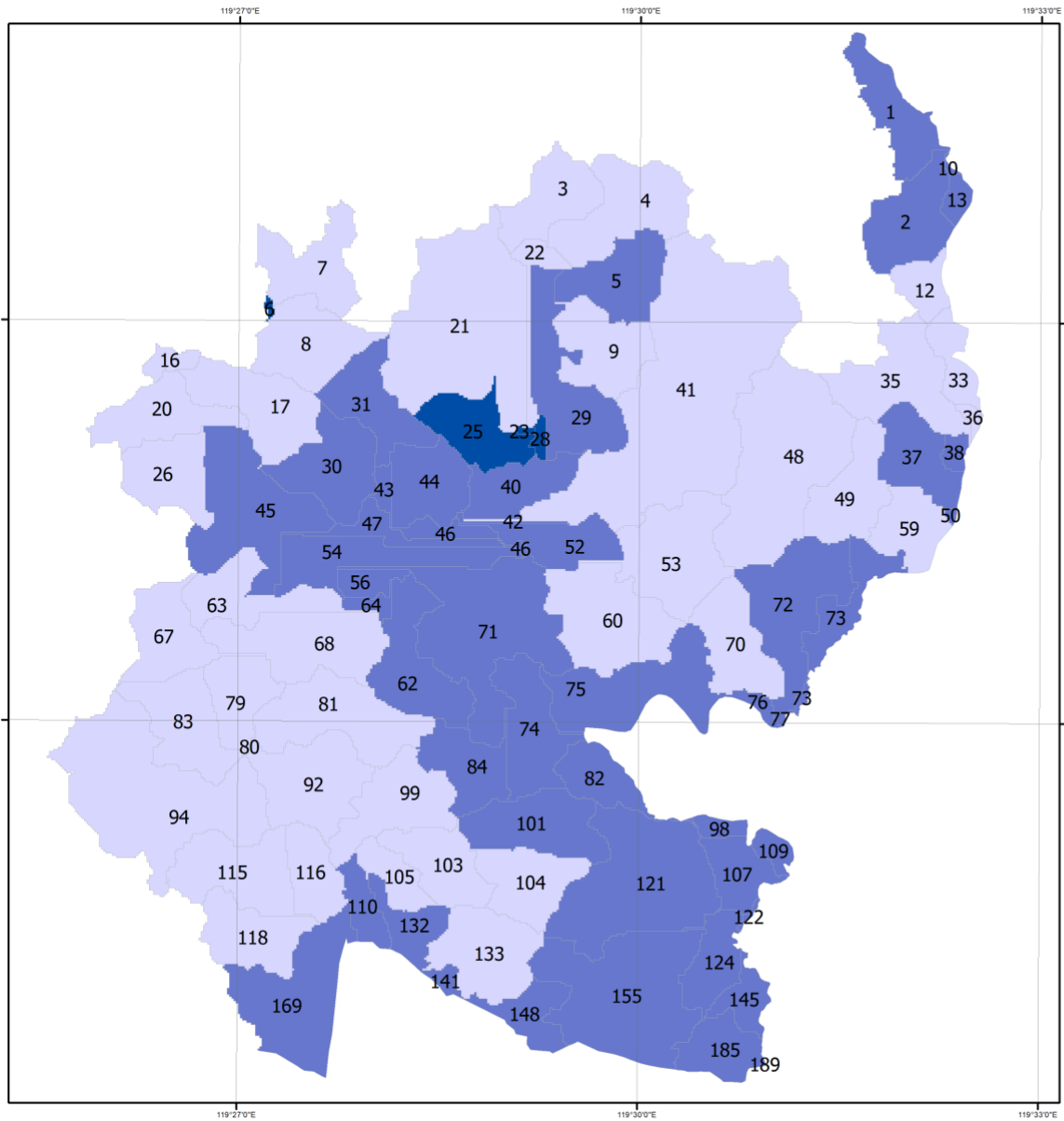
42	26	222	104	228	14	6	15	17	1	3	10	6	14	638	600-900	Permukiman
43	26	222	104	228	14	6	15	17	1	3	10	6	14	638	600-900	Tambak
44	26	222	104	228	14	6	15	17	1	3	10	6	14	638	600-900	Tubuh Air
45	28	0	0	0	0	0	0	0	0	0	0	0	0	0	0	Tambak
46	29	197	76	193	6	1	3	3	0	0	2	1	4	489	300-600	Permukiman
47	29	197	76	193	6	1	3	3	0	0	2	1	4	489	300-600	Sawah
48	29	197	76	193	6	1	3	3	0	0	2	1	4	489	300-600	Tambak
49	30	189	73	188	6	1	2	2	0	0	1	1	2	466	300-600	Permukiman
50	30	189	73	188	6	1	2	2	0	0	1	1	2	466	300-600	Sawah
51	30	189	73	188	6	1	2	2	0	0	1	1	2	466	300-600	Tambak
52	30	189	73	188	6	1	2	2	0	0	1	1	2	466	300-600	Tubuh Air
53	31	186	73	184	7	0	2	1	0	0	1	0	1	456	300-600	Permukiman
54	31	186	73	184	7	0	2	1	0	0	1	0	1	456	300-600	Sawah
55	31	186	73	184	7	0	2	1	0	0	1	0	1	456	300-600	Tambak
56	31	186	73	184	7	0	2	1	0	0	1	0	1	456	300-600	Tubuh Air
57	33	29	15	27	12	0	5	1	0	0	0	0	1	91	0-300	Pertanian Lahan Kering Campur Semak
58	33	29	15	27	12	0	5	1	0	0	0	0	1	91	0-300	Sawah
59	35	33	17	29	13	0	5	2	0	0	0	0	1	101	0-300	Permukiman
60	35	33	17	29	13	0	5	2	0	0	0	0	1	101	0-300	Pertanian Lahan Kering Campur Semak
61	35	33	17	29	13	0	5	2	0	0	0	0	1	101	0-300	Sawah
62	36	27	13	26	11	0	4	0	0	0	0	0	0	82	0-300	Pertanian Lahan Kering Campur Semak
63	36	27	13	26	11	0	4	0	0	0	0	0	0	82	0-300	Sawah
64	37	27	12	25	11	0	3	0	0	0	0	0	0	79	0-300	Pertanian Lahan Kering Campur Semak
65	37	27	12	25	11	0	3	0	0	0	0	0	0	79	0-300	Sawah
66	38	27	13	26	11	0	4	0	0	0	0	0	0	82	0-300	Sawah
67	40	183	68	180	5	0	0	0	0	0	0	0	0	435	300-600	Hutan Mangrove Sekunder
68	40	183	68	180	5	0	0	0	0	0	0	0	0	435	300-600	Sawah
69	40	183	68	180	5	0	0	0	0	0	0	0	0	435	300-600	Tambak
70	41	208	89	210	8	3	8	8	0	1	5	3	7	551	300-600	Hutan Mangrove Sekunder
71	41	208	89	210	8	3	8	8	0	1	5	3	7	551	300-600	Permukiman
72	41	208	89	210	8	3	8	8	0	1	5	3	7	551	300-600	Pertanian Lahan Kering Campur Semak
73	41	208	89	210	8	3	8	8	0	1	5	3	7	551	300-600	Sawah
74	41	208	89	210	8	3	8	8	0	1	5	3	7	551	300-600	Tambak
75	42	171	60	165	4	0	0	0	0	0	0	0	0	400	300-600	Hutan Mangrove Sekunder
76	42	171	60	165	4	0	0	0	0	0	0	0	0	400	300-600	Sawah
77	42	171	60	165	4	0	0	0	0	0	0	0	0	400	300-600	Tambak
78	43	183	70	181	6	0	0	0	0	0	0	0	0	440	300-600	Sawah
79	43	183	70	181	6	0	0	0	0	0	0	0	0	440	300-600	Tambak
80	43	183	70	181	6	0	0	0	0	0	0	0	0	440	300-600	Tubuh Air
81	44	171	61	164	5	0	0	0	0	0	0	0	0	401	300-600	Hutan Mangrove Sekunder
82	44	171	61	164	5	0	0	0	0	0	0	0	0	401	300-600	Sawah
83	44	171	61	164	5	0	0	0	0	0	0	0	0	401	300-600	Tambak
84	44	171	61	164	5	0	0	0	0	0	0	0	0	401	300-600	Tubuh Air
85	45	186	73	183	7	2	5	5	0	1	3	2	4	470	300-600	Hutan Mangrove Sekunder

86	45	186	73	183	7	2	5	5	0	1	3	2	4	470	300-600	Permukiman
87	45	186	73	183	7	2	5	5	0	1	3	2	4	470	300-600	Sawah
88	45	186	73	183	7	2	5	5	0	1	3	2	4	470	300-600	Tambak
89	45	186	73	183	7	2	5	5	0	1	3	2	4	470	300-600	Tubuh Air
90	46	170	59	162	4	0	0	0	0	0	0	0	0	395	300-600	Hutan Mangrove Sekunder
91	46	170	59	162	4	0	0	0	0	0	0	0	0	395	300-600	Sawah
92	46	170	59	162	4	0	0	0	0	0	0	0	0	395	300-600	Tambak
93	47	179	65	174	4	0	0	0	0	0	0	0	0	423	300-600	Hutan Mangrove Sekunder
94	47	179	65	174	4	0	0	0	0	0	0	0	0	423	300-600	Sawah
95	47	179	65	174	4	0	0	0	0	0	0	0	0	423	300-600	Tambak
96	48	198	80	198	7	1	4	4	0	1	2	2	4	500	300-600	Permukiman
97	48	198	80	198	7	1	4	4	0	1	2	2	4	500	300-600	Pertanian Lahan Kering Campur Semak
98	48	198	80	198	7	1	4	4	0	1	2	2	4	500	300-600	Sawah
99	49	205	85	205	8	2	6	7	0	1	4	3	6	533	300-600	Permukiman
100	49	205	85	205	8	2	6	7	0	1	4	3	6	533	300-600	Pertanian Lahan Kering Campur Semak
101	49	205	85	205	8	2	6	7	0	1	4	3	6	533	300-600	Sawah
102	50	27	13	27	12	0	4	1	0	0	0	0	0	84	0-300	Sawah
103	52	184	70	182	5	1	2	2	0	0	1	1	2	452	300-600	Hutan Mangrove Sekunder
104	52	184	70	182	5	1	2	2	0	0	1	1	2	452	300-600	Permukiman
105	52	184	70	182	5	1	2	2	0	0	1	1	2	452	300-600	Sawah
106	52	184	70	182	5	1	2	2	0	0	1	1	2	452	300-600	Tambak
107	53	217	97	221	10	5	12	13	0	2	8	5	10	600	600-900	Permukiman
108	53	217	97	221	10	5	12	13	0	2	8	5	10	600	600-900	Pertanian Lahan Kering Campur Semak
109	53	217	97	221	10	5	12	13	0	2	8	5	10	600	600-900	Sawah
110	53	217	97	221	10	5	12	13	0	2	8	5	10	600	600-900	Tambak
111	54	169	59	162	4	0	0	0	0	0	0	0	0	394	300-600	Hutan Mangrove Sekunder
112	54	169	59	162	4	0	0	0	0	0	0	0	0	394	300-600	Sawah
113	54	169	59	162	4	0	0	0	0	0	0	0	0	394	300-600	Tambak
114	56	159	52	147	3	0	0	0	0	0	0	0	0	361	300-600	Hutan Mangrove Sekunder
115	56	159	52	147	3	0	0	0	0	0	0	0	0	361	300-600	Tambak
116	59	30	16	27	12	0	7	2	0	0	1	1	2	100	0-300	Permukiman
117	59	30	16	27	12	0	7	2	0	0	1	1	2	100	0-300	Pertanian Lahan Kering Campur Semak
118	59	30	16	27	12	0	7	2	0	0	1	1	2	100	0-300	Sawah
119	60	208	88	207	9	4	10	11	0	2	6	4	9	559	300-600	Permukiman
120	60	208	88	207	9	4	10	11	0	2	6	4	9	559	300-600	Sawah
121	60	208	88	207	9	4	10	11	0	2	6	4	9	559	300-600	Semak Belukar
122	60	208	88	207	9	4	10	11	0	2	6	4	9	559	300-600	Tambak
123	62	194	80	191	8	4	9	10	0	1	6	4	8	515	300-600	Hutan Mangrove Sekunder
124	62	194	80	191	8	4	9	10	0	1	6	4	8	515	300-600	Permukiman
125	62	194	80	191	8	4	9	10	0	1	6	4	8	515	300-600	Semak Belukar
126	62	194	80	191	8	4	9	10	0	1	6	4	8	515	300-600	Tambak
127	63	205	88	205	9	4	11	12	0	2	7	5	9	558	300-600	Hutan Mangrove Sekunder
128	63	205	88	205	9	4	11	12	0	2	7	5	9	558	300-600	Permukiman
129	63	205	88	205	9	4	11	12	0	2	7	5	9	558	300-600	Sawah

130	63	205	88	205	9	4	11	12	0	2	7	5	9	558	300-600	Tambak
131	64	159	52	147	3	0	0	0	0	0	0	0	0	360	300-600	Hutan Mangrove Sekunder
132	64	159	52	147	3	0	0	0	0	0	0	0	0	360	300-600	Tambak
133	67	222	105	227	15	6	15	17	1	3	10	6	14	639	600-900	Permukiman
134	68	213	94	216	10	5	13	14	0	2	8	6	11	593	300-600	Hutan Mangrove Sekunder
135	68	213	94	216	10	5	13	14	0	2	8	6	11	593	300-600	Permukiman
136	68	213	94	216	10	5	13	14	0	2	8	6	11	593	300-600	Tambak
137	70	216	94	217	10	4	11	12	0	2	7	5	10	587	300-600	Permukiman
138	70	216	94	217	10	4	11	12	0	2	7	5	10	587	300-600	Sawah
139	70	216	94	217	10	4	11	12	0	2	7	5	10	587	300-600	Semak Belukar
140	71	192	76	189	7	2	5	6	0	1	3	2	5	489	300-600	Hutan Mangrove Sekunder
141	71	192	76	189	7	2	5	6	0	1	3	2	5	489	300-600	Permukiman
142	71	192	76	189	7	2	5	6	0	1	3	2	5	489	300-600	Sawah
143	71	192	76	189	7	2	5	6	0	1	3	2	5	489	300-600	Semak Belukar
144	71	192	76	189	7	2	5	6	0	1	3	2	5	489	300-600	Tambak
145	72	193	76	193	6	1	3	3	0	0	2	1	3	482	300-600	Permukiman
146	72	193	76	193	6	1	3	3	0	0	2	1	3	482	300-600	Pertanian Lahan Kering Campur Semak
147	72	193	76	193	6	1	3	3	0	0	2	1	3	482	300-600	Sawah
148	73	186	70	185	5	0	2	1	0	0	0	0	1	450	300-600	Permukiman
149	73	186	70	185	5	0	2	1	0	0	0	0	1	450	300-600	Pertanian Lahan Kering Campur Semak
150	73	186	70	185	5	0	2	1	0	0	0	0	1	450	300-600	Sawah
151	74	196	79	193	7	3	7	7	0	1	4	3	6	505	300-600	Permukiman
152	74	196	79	193	7	3	7	7	0	1	4	3	6	505	300-600	Sawah
153	74	196	79	193	7	3	7	7	0	1	4	3	6	505	300-600	Semak Belukar
154	75	197	80	194	8	3	8	9	0	1	5	4	7	516	300-600	Permukiman
155	75	197	80	194	8	3	8	9	0	1	5	4	7	516	300-600	Sawah
156	75	197	80	194	8	3	8	9	0	1	5	4	7	516	300-600	Semak Belukar
157	76	191	71	185	5	0	1	1	0	0	0	0	2	456	300-600	Sawah
158	77	185	71	184	7	0	3	1	0	0	0	0	1	452	300-600	Sawah
159	79	227	104	230	11	6	15	17	1	2	10	7	13	643	600-900	Permukiman
160	80	230	105	232	13	6	15	17	1	2	10	6	14	651	600-900	Permukiman
161	81	222	100	225	11	5	13	15	0	2	9	6	12	619	600-900	Permukiman
162	81	222	100	225	11	5	13	15	0	2	9	6	12	619	600-900	Pertanian Lahan Kering Campur Semak
163	81	222	100	225	11	5	13	15	0	2	9	6	12	619	600-900	Sawah
164	82	174	63	171	4	0	0	0	0	0	0	0	0	413	300-600	Sawah
165	82	174	63	171	4	0	0	0	0	0	0	0	0	413	300-600	Semak Belukar
166	83	223	103	229	12	6	15	17	1	2	10	6	13	638	600-900	Permukiman
167	84	195	80	196	7	2	6	6	0	1	4	3	5	506	300-600	Permukiman
168	84	195	80	196	7	2	6	6	0	1	4	3	5	506	300-600	Pertanian Lahan Kering Campur Semak
169	84	195	80	196	7	2	6	6	0	1	4	3	5	506	300-600	Sawah
170	84	195	80	196	7	2	6	6	0	1	4	3	5	506	300-600	Semak Belukar
171	92	213	94	215	11	4	10	11	0	2	6	4	9	579	300-600	Permukiman
172	92	213	94	215	11	4	10	11	0	2	6	4	9	579	300-600	Pertanian Lahan Kering Campur Semak
173	92	213	94	215	11	4	10	11	0	2	6	4	9	579	300-600	Sawah

174	94	223	103	228	13	6	15	17	1	2	10	6	13	638	600-900	Permukiman
175	98	185	69	183	5	0	0	0	0	0	0	0	0	442	300-600	Sawah
176	99	202	83	200	7	2	5	5	0	1	3	2	5	516	300-600	Permukiman
177	99	202	83	200	7	2	5	5	0	1	3	2	5	516	300-600	Pertanian Lahan Kering Campur Semak
178	99	202	83	200	7	2	5	5	0	1	3	2	5	516	300-600	Sawah
179	101	185	74	187	6	1	3	3	0	0	2	1	3	466	300-600	Permukiman
180	101	185	74	187	6	1	3	3	0	0	2	1	3	466	300-600	Sawah
181	101	185	74	187	6	1	3	3	0	0	2	1	3	466	300-600	Semak Belukar Rawa
182	101	185	74	187	6	1	3	3	0	0	2	1	3	466	300-600	Tubuh Air
183	103	223	101	227	11	6	14	16	1	2	10	7	12	629	600-900	Permukiman
184	103	223	101	227	11	6	14	16	1	2	10	7	12	629	600-900	Pertanian Lahan Kering Campur Semak
185	103	223	101	227	11	6	14	16	1	2	10	7	12	629	600-900	Sawah
186	103	223	101	227	11	6	14	16	1	2	10	7	12	629	600-900	Semak Belukar Rawa
187	103	223	101	227	11	6	14	16	1	2	10	7	12	629	600-900	Tubuh Air
188	104	203	85	198	8	4	10	10	0	2	6	4	8	538	300-600	Permukiman
189	104	203	85	198	8	4	10	10	0	2	6	4	8	538	300-600	Sawah
190	104	203	85	198	8	4	10	10	0	2	6	4	8	538	300-600	Semak Belukar Rawa
191	104	203	85	198	8	4	10	10	0	2	6	4	8	538	300-600	Tubuh Air
192	105	207	87	207	8	3	8	8	0	1	5	3	7	545	300-600	Permukiman
193	105	207	87	207	8	3	8	8	0	1	5	3	7	545	300-600	Pertanian Lahan Kering Campur Semak
194	105	207	87	207	8	3	8	8	0	1	5	3	7	545	300-600	Sawah
195	105	207	87	207	8	3	8	8	0	1	5	3	7	545	300-600	Tubuh Air
196	107	184	69	182	5	0	0	0	0	0	0	0	0	440	300-600	Sawah
197	109	185	70	184	5	0	2	1	0	0	0	0	1	449	300-600	Sawah
198	110	198	80	198	7	2	5	5	0	1	3	2	4	505	300-600	Permukiman
199	110	198	80	198	7	2	5	5	0	1	3	2	4	505	300-600	Pertanian Lahan Kering Campur Semak
200	110	198	80	198	7	2	5	5	0	1	3	2	4	505	300-600	Sawah
201	115	218	101	223	14	5	13	15	0	2	8	5	12	618	600-900	Permukiman
202	115	218	101	223	14	5	13	15	0	2	8	5	12	618	600-900	Pertanian Lahan Kering Campur Semak
203	116	205	89	208	10	2	6	6	0	1	3	2	5	539	300-600	Permukiman
204	116	205	89	208	10	2	6	6	0	1	3	2	5	539	300-600	Pertanian Lahan Kering Campur Semak
205	118	206	90	209	10	3	9	9	0	1	5	3	8	554	300-600	Permukiman
206	118	206	90	209	10	3	9	9	0	1	5	3	8	554	300-600	Pertanian Lahan Kering Campur Semak
207	118	206	90	209	10	3	9	9	0	1	5	3	8	554	300-600	Sawah
208	121	193	77	193	6	1	4	4	0	1	2	1	3	485	300-600	Permukiman
209	121	193	77	193	6	1	4	4	0	1	2	1	3	485	300-600	Sawah
210	121	193	77	193	6	1	4	4	0	1	2	1	3	485	300-600	Tubuh Air
211	122	182	70	180	7	0	0	0	0	0	0	0	0	440	300-600	Sawah
212	124	183	70	181	6	0	0	0	0	0	0	0	0	440	300-600	Sawah
213	124	183	70	181	6	0	0	0	0	0	0	0	0	440	300-600	Tubuh Air
214	132	198	79	197	7	2	5	5	0	1	3	2	4	504	300-600	Permukiman
215	132	198	79	197	7	2	5	5	0	1	3	2	4	504	300-600	Sawah
216	132	198	79	197	7	2	5	5	0	1	3	2	4	504	300-600	Tubuh Air
217	133	200	82	198	7	2	6	7	0	1	4	3	6	516	300-600	Permukiman

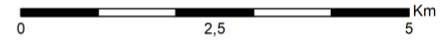
218	133	200	82	198	7	2	6	7	0	1	4	3	6	516	300-600	Sawah
219	141	182	71	180	7	0	0	0	0	0	0	0	0	440	300-600	Sawah
220	145	184	69	182	5	0	0	0	0	0	0	0	0	440	300-600	Sawah
221	145	184	69	182	5	0	0	0	0	0	0	0	0	440	300-600	Tubuh Air
222	148	186	71	185	5	0	1	1	0	0	1	0	1	452	300-600	Permukiman
223	148	186	71	185	5	0	1	1	0	0	1	0	1	452	300-600	Sawah
224	155	192	77	192	7	2	5	6	0	1	3	2	5	493	300-600	Permukiman
225	155	192	77	192	7	2	5	6	0	1	3	2	5	493	300-600	Sawah
226	155	192	77	192	7	2	5	6	0	1	3	2	5	493	300-600	Tubuh Air
227	169	193	78	192	7	2	6	7	0	1	4	3	5	499	300-600	Permukiman
228	169	193	78	192	7	2	6	7	0	1	4	3	5	499	300-600	Pertanian Lahan Kering Campur Semak
229	169	193	78	192	7	2	6	7	0	1	4	3	5	499	300-600	Sawah
230	185	165	58	157	4	0	1	1	0	0	0	0	1	386	300-600	Sawah
231	185	165	58	157	4	0	1	1	0	0	0	0	1	386	300-600	Tubuh Air
232	189	181	71	179	8	0	0	0	0	0	0	0	0	440	300-600	Sawah



**PETA ALIRAN PERMUKAAN TAHUN 2002
DAS TALLO KOTA MAKASSAR**

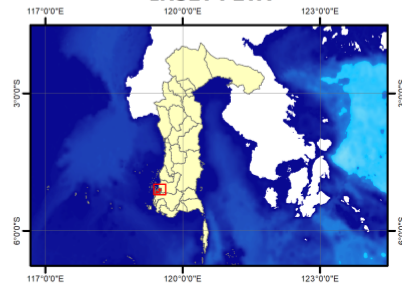


1:53.000



Coordinate System: WGS 1984 UTM Zone 50S
Projection: Transverse Mercator
Datum: WGS 1984

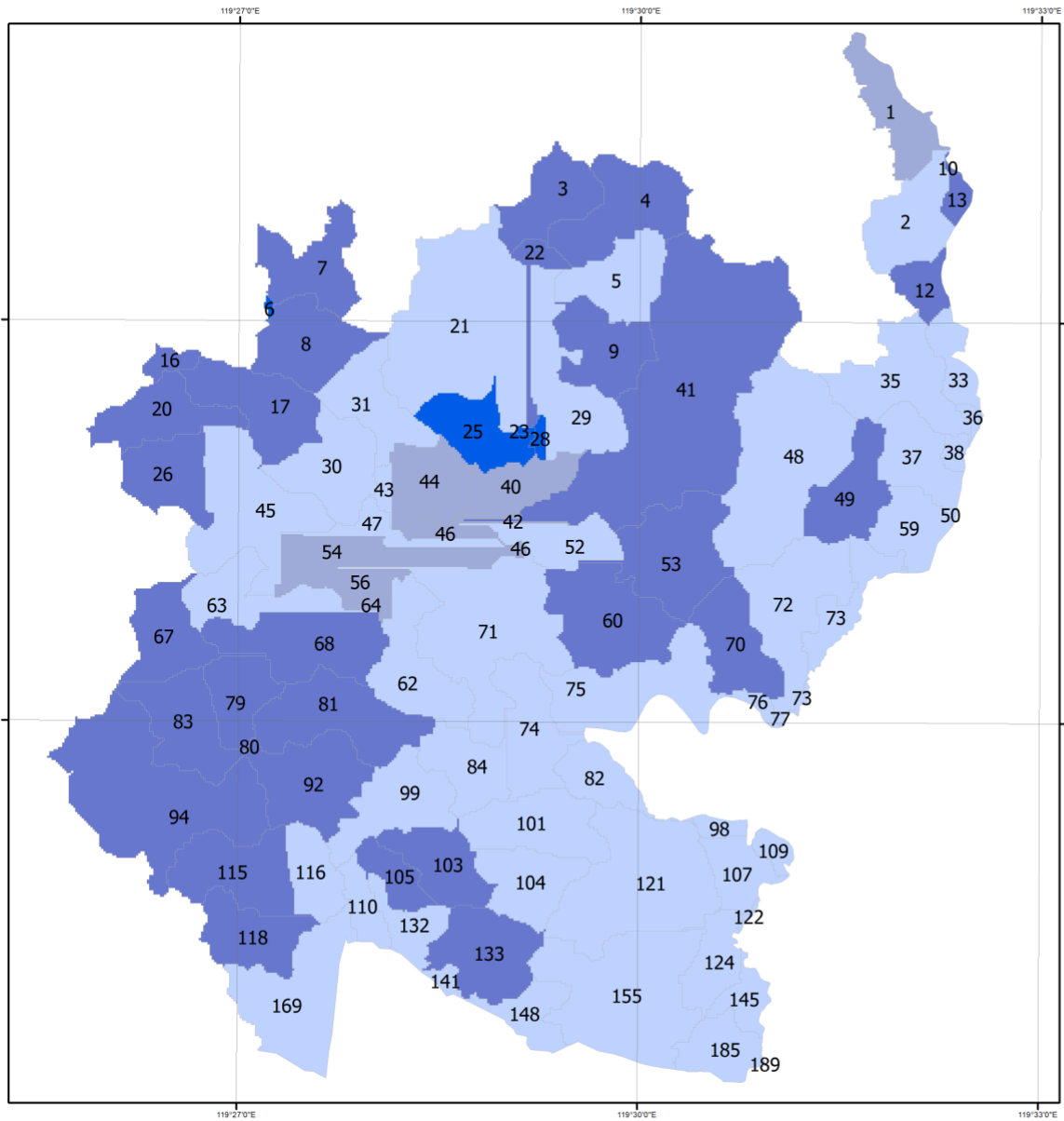
INSET PETA




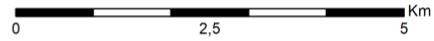
Klasifikasi Aliran Permukaan

- 0 mm - 300 mm
- 600 mm - 900 mm
- 900 mm - 1200 mm

Sumber Peta:
Rencana Tata Ruang Wilayah Kota Makassar 2015-2035

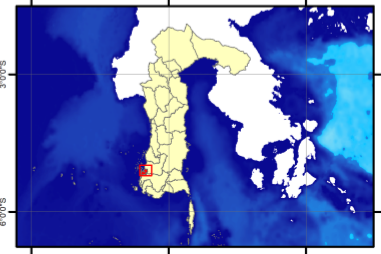


**PETA ALIRAN PERMUKAAN TAHUN 2007
DAS TALLO KOTA MAKASSAR**







 1:53.000


Coordinate System: WGS 1984 UTM Zone 50S
 Projection: Transverse Mercator
 Datum: WGS 1984

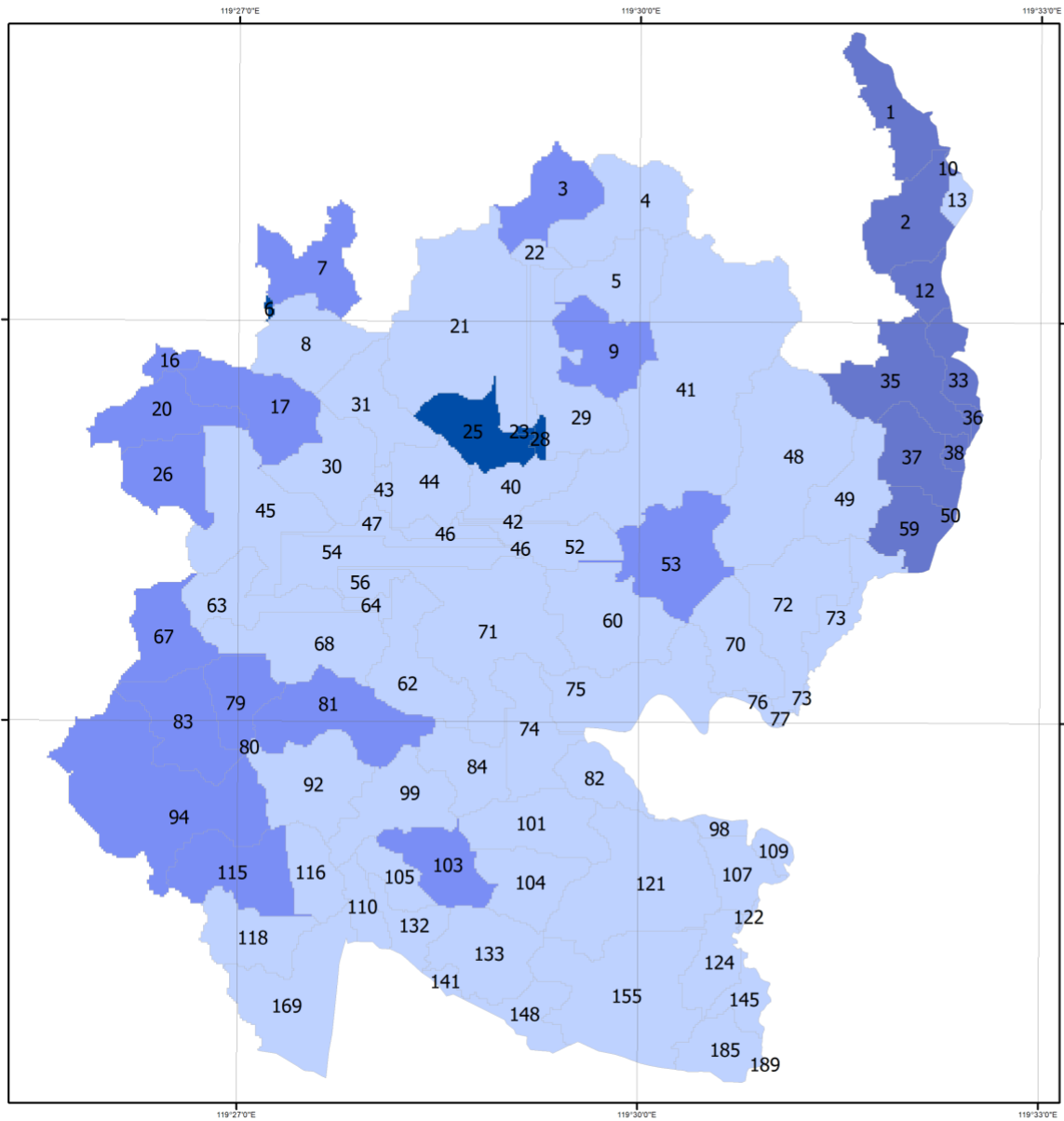
INSET PETA



Klasifikasi Aliran Permukaan

-  0 mm
-  1200 mm - 1500 mm
-  1500 mm - 1800 mm
-  900 mm - 1200 mm
-  >1800 mm

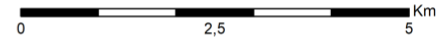
Sumber Peta:
Rencana Tata Ruang Wilayah Kota Makassar 2015-2035



**PETA ALIRAN PERMUKAAN TAHUN 2012
DAS TALLO KOTA MAKASSAR**

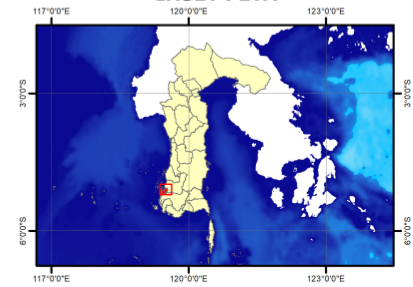


1:53.000

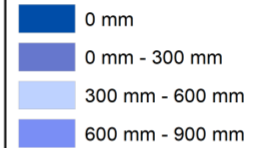


Coordinate System: WGS 1984 UTM Zone 50S
Projection: Transverse Mercator
Datum: WGS 1984

INSET PETA



Klasifikasi Aliran Permukaan



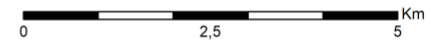
Sumber Peta:
Rencana Tata Ruang Wilayah Kota Makassar 2015-2035



**PETA KAWASAN TIDAK MENDUKUNG
FUNGSI PENAMPUNGAN AIR HUJAN
DAS TALLO KOTA MAKASSAR**

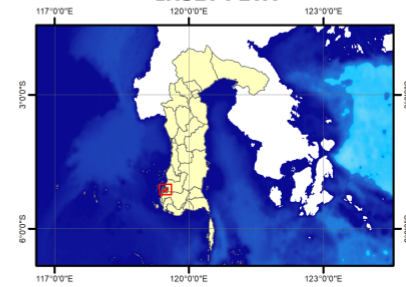


1:55.000



Coordinate System: WGS 1984 UTM Zone 50S
Projection: Transverse Mercator
Datum: WGS 1984

INSET PETA

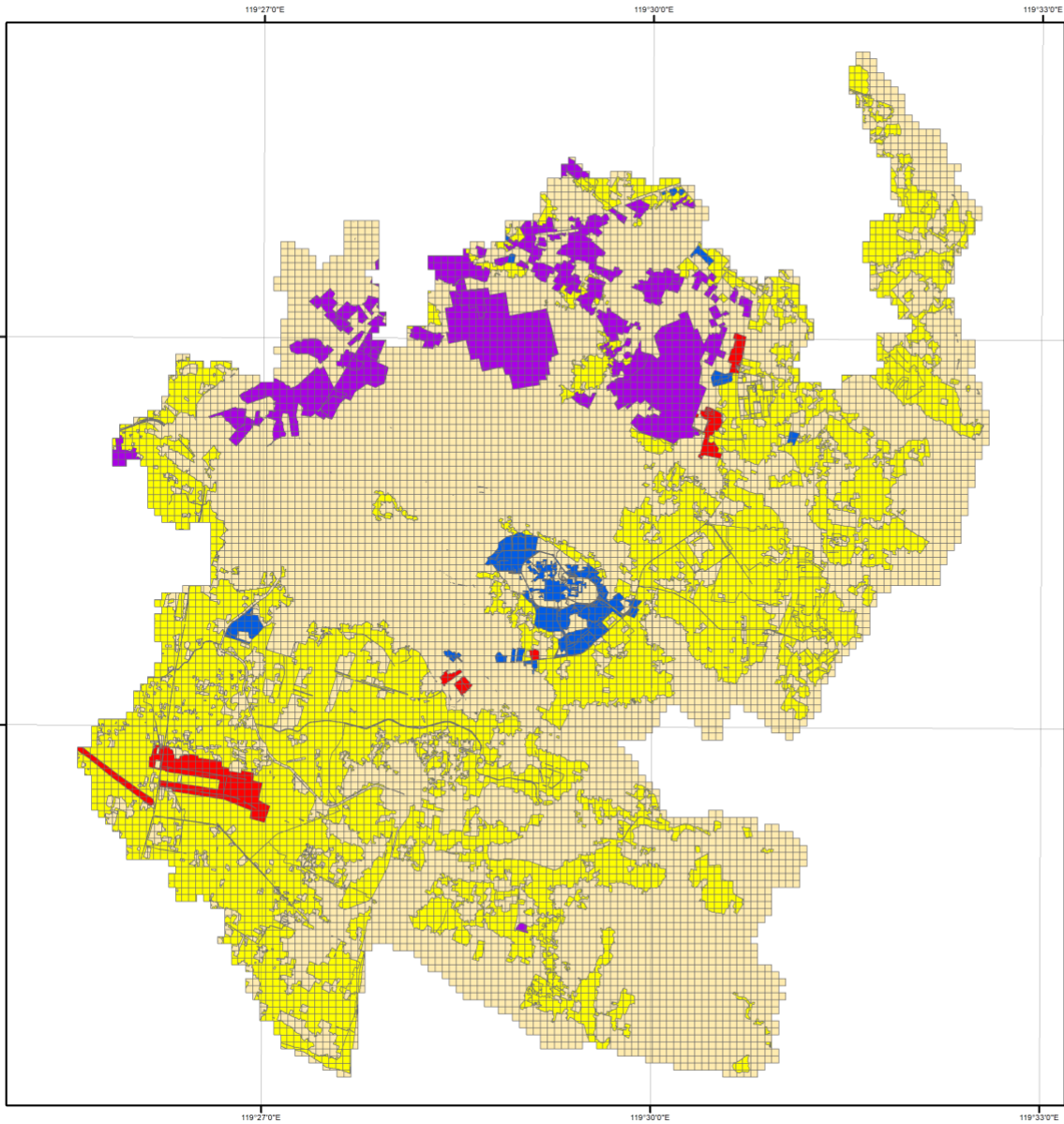


Legenda

Keterangan

-  Kanal
-  Pantai
-  Sungai

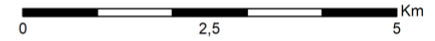
Sumber Peta:
Rencana Tata Ruang Wilayah Kota Makassar 2015-2035



**PETA KAWASAN MENGHAMBAT
FUNGSI PENAMPUNGAN AIR HUJAN
DAS TALLO KOTA MAKASSAR**

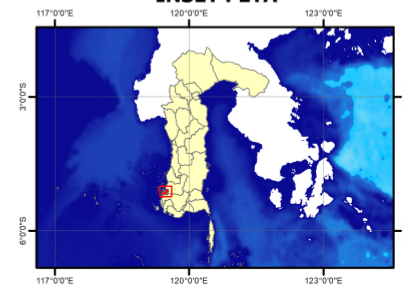


1:55.000



Coordinate System: WGS 1984 UTM Zone 50S
Projection: Transverse Mercator
Datum: WGS 1984

INSET PETA

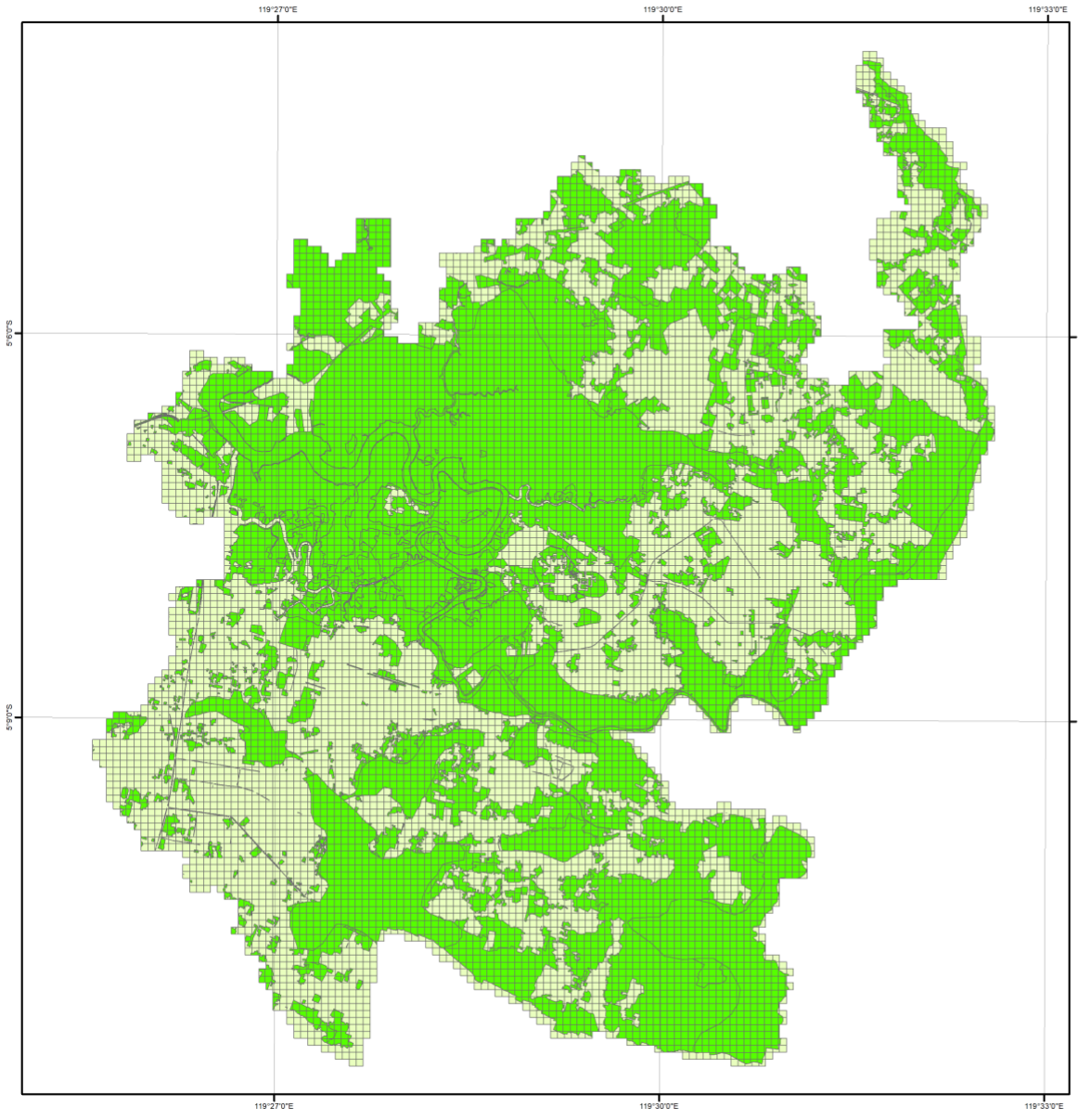


Legenda

Kawasan Terbangun

- Industri
- Komersil
- Pendidikan
- Perkantoran
- Permukiman

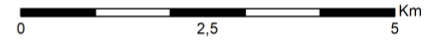
Sumber Peta:
Rencana Tata Ruang Wilayah Kota Makassar 2015-2035



**PETA KAWASAN MENDUKUNG
FUNGSI PENAMPUNGAN AIR HUJAN
DAS TALLO KOTA MAKASSAR**

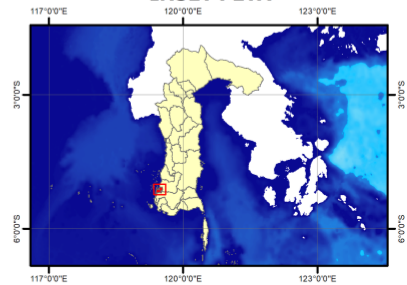


1:55.000





Coordinate System: WGS 1984 UTM Zone 50S
Projection: Transverse Mercator
Datum: WGS 1984

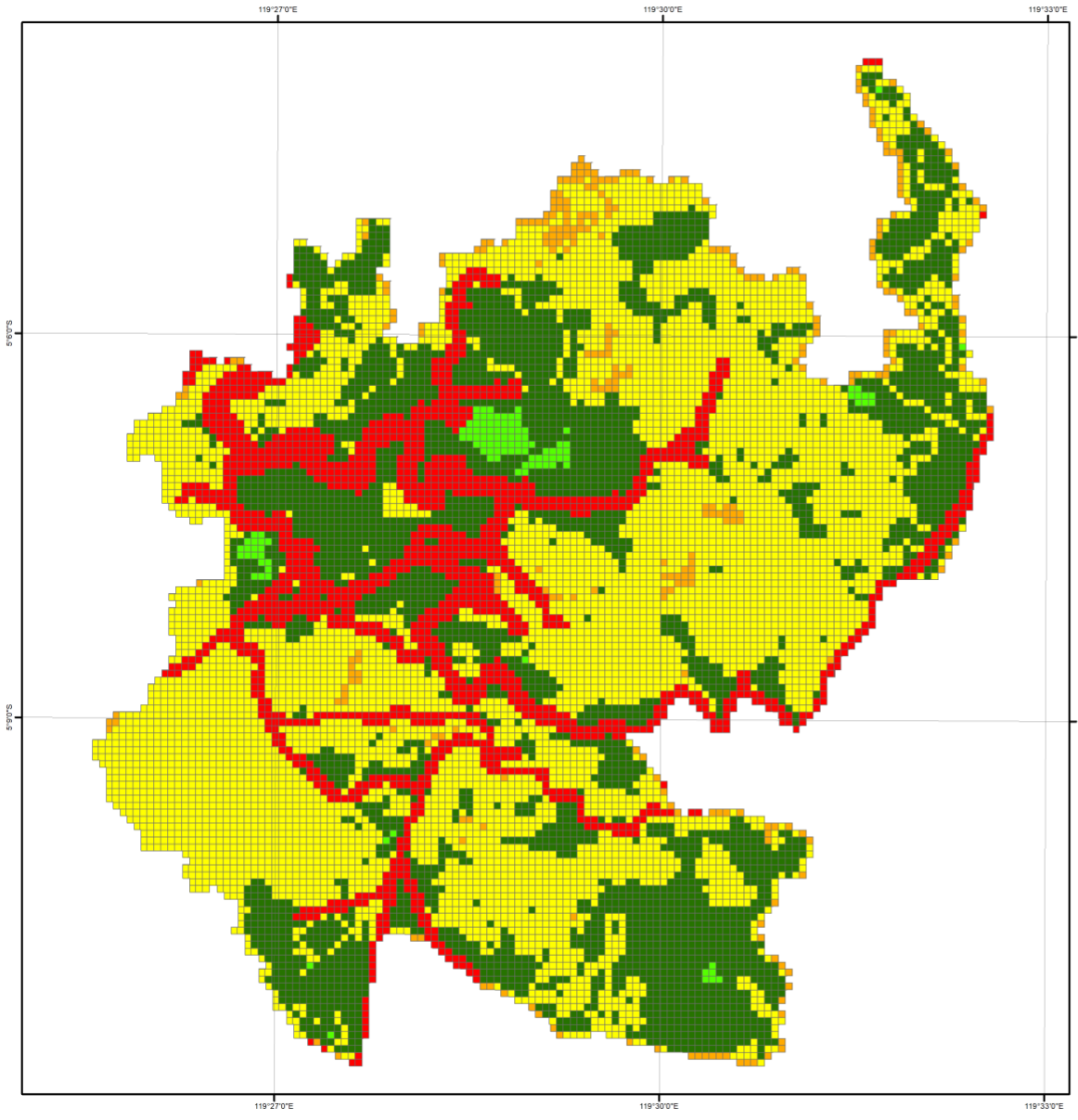
INSET PETA



Keterangan

-  Mendukung
-  Tidak Mendukung

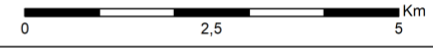
Sumber Peta:
Rencana Tata Ruang Wilayah Kota Makassar 2015-2035



**PETA LOKASI POTENSIAL PENAMPUNGAN AIR HUJAN
DI KOTA MAKASSAR BERDASARKAN ANALISIS GIS
(BASED SCENARIO)**

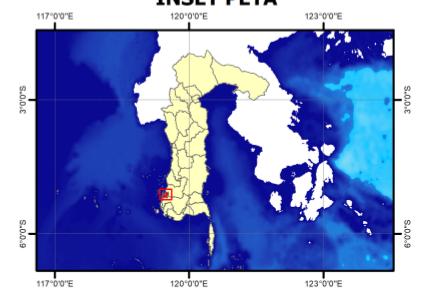


1:55.000








Coordinate System: WGS 1984 UTM Zone 50S
Projection: Transverse Mercator
Datum: WGS 1984

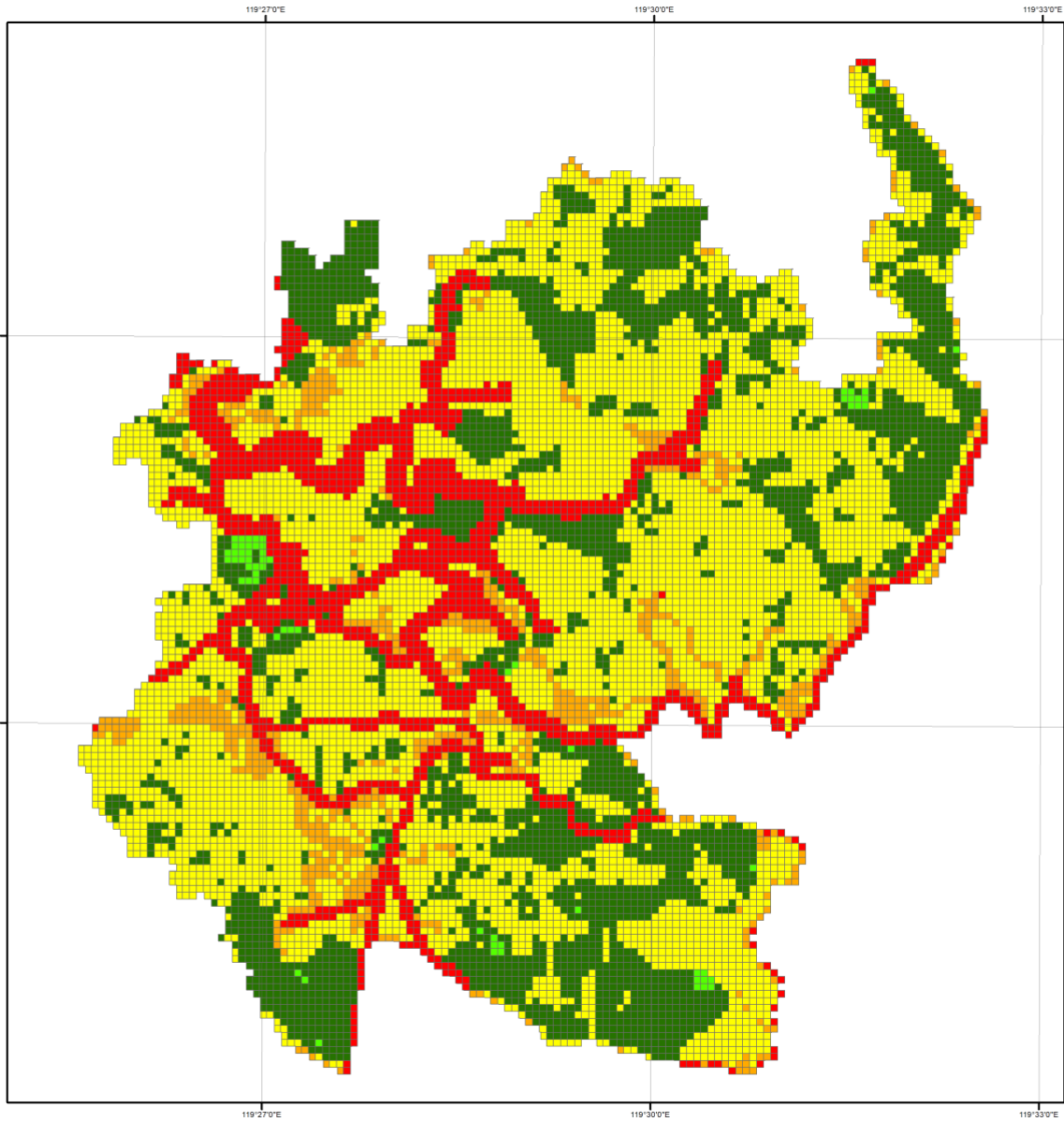
INSET PETA



Legenda

-  0,000 - 0,200
-  0,201 - 0,400
-  0,401 - 0,600
-  0,601 - 0,800
-  0,801 - 1,000

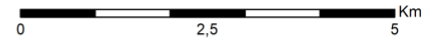
Sumber Peta:
Rencana Tata Ruang Wilayah Kota Makassar 2015-2035



**PETA LOKASI POTENSIAL PENAMPUNGAN AIR HUJAN
DI KOTA MAKASSAR BERDASARKAN ANALISIS GIS
(SCENARIO 1)**

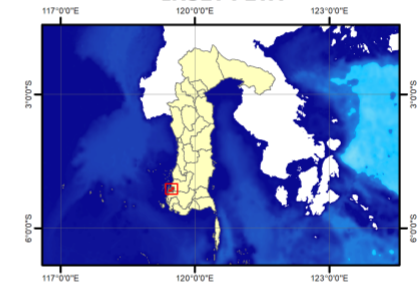


1:55.000



Coordinate System: WGS 1984 UTM Zone 50S
Projection: Transverse Mercator
Datum: WGS 1984

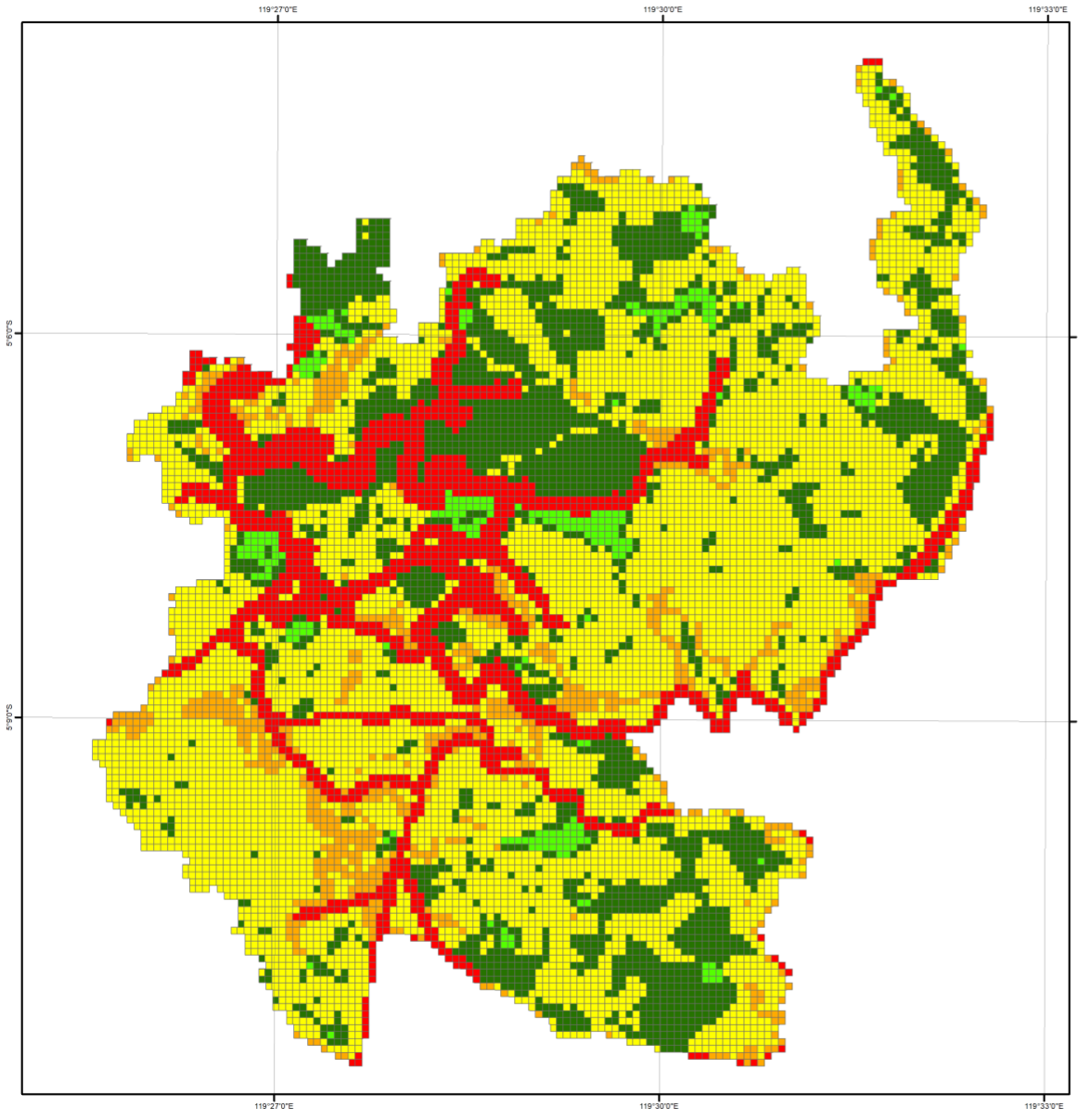
INSET PETA



Legenda

- 0,000 - 0,200
- 0,201 - 0,400
- 0,401 - 0,600
- 0,601 - 0,800
- 0,801 - 1,000

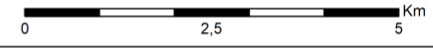
Sumber Peta:
Rencana Tata Ruang Wilayah Kota Makassar 2015-2035



**PETA LOKASI POTENSIAL PENAMPUNGAN AIR HUJAN
DI KOTA MAKASSAR BERDASARKAN ANALISIS GIS
(SCENARIO 2)**

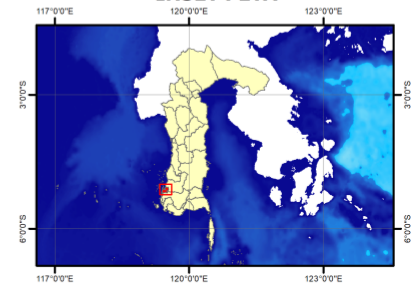


1:55.000



Coordinate System: WGS 1984 UTM Zone 50S
Projection: Transverse Mercator
Datum: WGS 1984

INSET PETA



Legenda

- 0,000 - 0,200
- 0,201 - 0,400
- 0,401 - 0,600
- 0,601 - 0,800
- 0,801 - 1,000

Sumber Peta:
Rencana Tata Ruang Wilayah Kota Makassar 2015-2035