

## DAFTAR PUSTAKA

1. Hoffbrand AV, Pettit JE, Moss PAH. 2001. *Kapita selekta hematologi*. Ed. 4. Terjemahan oleh Setiawan L. EGC. Jakarta. 2005. hal 1, 13-14, 18-19, 25.
2. Sacher RA, McPherson RA. *Tinjauan klinis hasil pemeriksaan laboratorium*. Ed.11. Terjemahan oleh Pendit BU, Wulandari D. EGC. Jakarta. 2004. hal. 2, 21, 41-43, 68, 673
3. Price SA, Wilson LM. 2002. *Patofisiologi konsep klinis proses-proses penyakit, Buku 1*. Ed. 6. Terjemahan oleh Pendit BU, Hartanto H, Wulansari P, Mahanani DA. EGC. Jakarta. 2006. hal. 247, 255-257.
4. Anonim. *Workshop flebotomi*. PDS PATKLIN. Makassar. 2008. hal. 3, 25
5. Patel N. *Tech talk becton dickinson: why is EDTA the anticoagulant of choice for hematology use?*. 2009 Jan. Vol 7. Available as PDF file.
6. BD Catalog. *Venous blood collection tubes*. [serial on internet]. 2011. [diakses 2 November 2011]. Available from ; <http://catalog.bd.com/bdCat/viewProduct.doCustomer?productNumber=367859>
7. Nemeč A, Kosorok MD, Butinar J. *The effect of high anticoagulant K<sub>3</sub>EDTA concentration on complete blood count and white blood cell differential counts in healthy beagle dogs*. 2005 Dec 2. Vol 42; p 65-70. Available as PDF file.
8. Bakta IM. *Hematologi klinik ringkas*. EGC. Jakarta. 2007. hal. 1-8, 12, 15.
9. Sadikin M. *Biokimia darah*. Widya Medika. Jakarta. 2002. hal 2-4, 14,19.
10. Hardjoeno H. dkk. *Interpretasi hasil tes laboratorium diagnostik*. Lephass. Makassar. 2003. Hal 1
11. Kee JL. *Pedoman pemeriksaan laboratorium dan diagnostik*. Ed. 6. Terjemahan oleh Kurniangsih S, Widyastuti P, Cahyaningrum R, Rahayu S. EGC. Jakarta. 2008. hal. 93, 784.
12. Rot P. *Kumpulan kuliah hematologi dan endrokinologi*. Bagian Ilmu Penyakit Dalam. Fakultas Kedokteran. Universitas Hasanuddin. Makassar. 2010. hal. 2, 9.

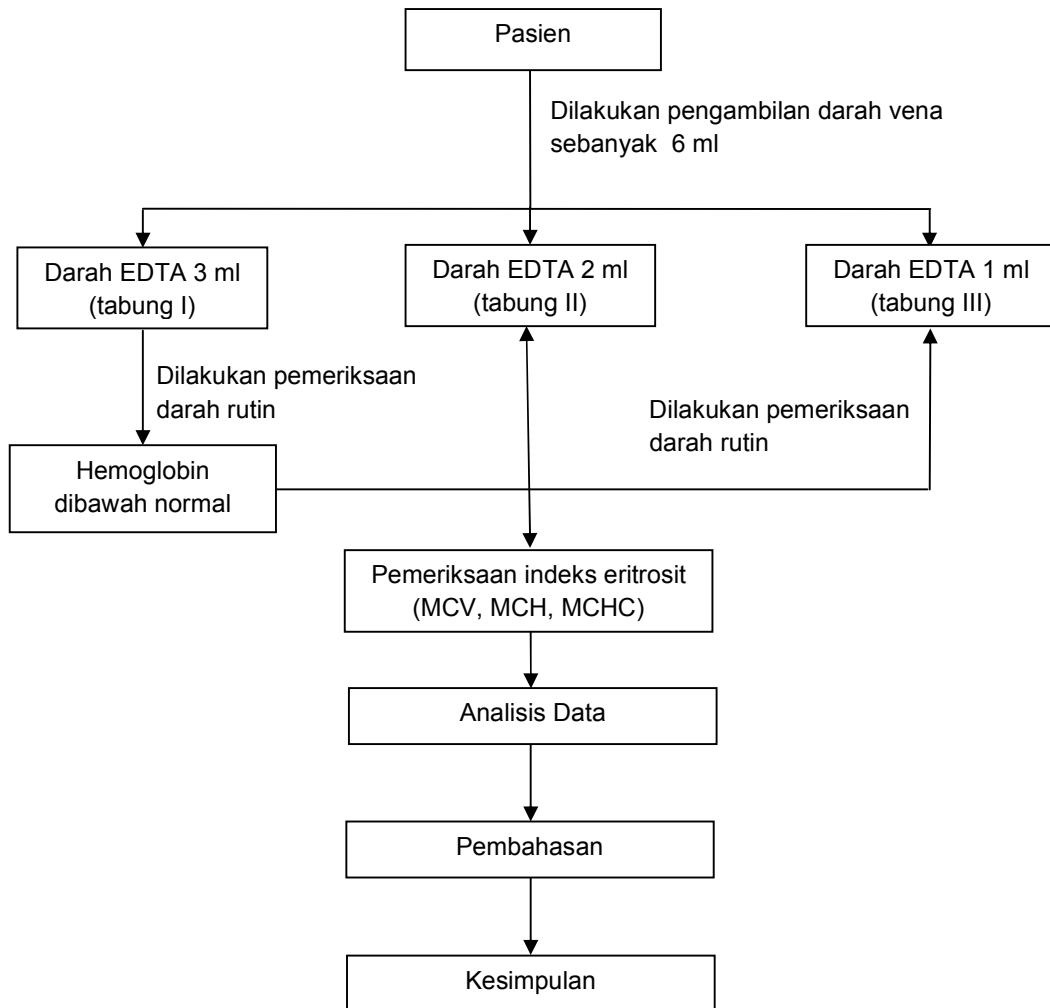
13. Tomodachi. *Diktat hematologi*. Fakultas Kedokteran. Universitas Hasanuddin. Makassar. 2004. hal. 9, 42.
14. Pusdiknakes. *Hematologi*. Depkes RI. Jakarta. 1989. hal. 10
15. Fattah M. *Pengaruh K<sub>2</sub>EDTA Terhadap Aktivitas Glutamat Oksaloasetat Transaminase (GOT) Dalam Darah*. Skripsi. Universitas Hasanuddin. Makassar. 2002. hal 3-11
16. Tjokronegoro A, Utama. *Pemeriksaan laboratorium hematologi sederhana*. Fakultas Kedokteran. Universitas Indonesia. Jakarta. 2004. hal. 3-6.
17. Rivai H. *Azas pemeriksaan kimia*. UI Press. Jakarta. 2006. hal. 216.
18. Budiarto E. *Metodologi penelitian kedokteran sebuah pengantar*. EGC. Jakarta. 2004. hal. 48-49
19. World Health Organization. *WHO global database on anaemia*. 2006. diakses 9 November 2011. p 21, 26, 32. *Available as PDF File*
20. Guyton AC. *Fisiologi manusia dan mekanisme penyakit*. Ed. III. Terjemahan oleh Andrianto P. EGC. Jakarta. 1996. hal 161.
21. Gandasoebrata R. *Penuntun laboratorium klinik*. Dian Rakyat. Jakarta. 2006. hal. 8-9.
22. Prodia seri informasi. *Pemeriksaan darah lengkap dan ferritin*. Jakarta. 2009.
23. Pusat data dan informasi. *Glosarium data dan informasi kesehatan*. Depkes RI. Jakarta. 2006. hal. 6-7
24. Murphy WG, Tong E, Murphy C. *Why do women have similar erythropoietin levels to men but lower*. 2010 Oct 14. Vol 116. *Available as PDF file*
25. Prasetyo YF. *Hubungan usia terhadap anemia pada pasien geriatri dengan penyakit kronik*. Skripsi Fakultas Kedokteran. Universitas Diponegoro. Semarang. 2008
26. Sabri L, Hastono ST. *Statistik kesehatan*. Rajagrafindo Persada. Jakarta. 2006.

**LAMPIRAN I**  
**DATA HASIL PENELITIAN**

No.	KODE	JK	UMUR (tahun)	Hb (g/dl)	MCV (fL)			MCH (pg)			MCHC (%)		
					1 ml	2ml	3ml	1ml	2ml	3ml	1ml	2ml	3ml
1	A1	P	51	10.8	79.3	79.8	79.1	26.3	26.1	26.0	33.1	32.7	32.8
2	A2	L	21	11.5	76.0	76.0	76.0	25.6	25.8	25.9	33.5	34.0	34.1
3	A3	L	60	12.6	97.0	97.3	97.0	34.0	33.8	33.5	35.0	34.7	34.5
4	A4	P	49	9.8	80.2	80.5	80.2	26.6	26.3	26.2	33.1	32.7	32.7
5	A5	P	44	10.9	74.0	75.0	76.0	25.3	25.5	25.2	34.1	34.1	33.4
6	A6	P	66	10.6	77.0	76.0	77.0	25.8	25.6	25.9	33.5	33.7	33.8
7	A7	P	53	9.9	86.0	87.0	88.0	30.1	30.3	30.8	34.9	34.8	35.1
8	A8	P	47	11.1	86.1	86.2	85.0	29.3	29.4	29.4	34.1	34.2	34.5
9	B1	L	75	9.8	62.0	62.2	62.0	20.3	20.5	20.1	32.8	33.0	32.4
10	B2	P	73	9.1	82.4	82.2	81.2	27.4	27.7	28.1	33.2	33.7	34.6
11	B3	P	25	8.0	64.0	65.0	64.0	21.2	21.3	21.6	33.0	32.8	33.6
12	B4	L	71	10.3	81.0	80.0	82.0	27.3	27.0	27.2	33.9	33.6	33.3
13	B5	P	38	9.8	82.7	82.6	82.6	26.8	27.0	26.6	32.5	32.7	32.2
14	B6	P	36	9.6	86.2	86.5	85.8	28.8	28.7	28.9	33.4	33.2	33.7
15	B7	P	61	11.6	88.7	89.1	88.5	29.6	29.5	29.7	33.3	33.1	33.5
16	B8	P	49	10.7	86.7	86.8	86.7	28.1	28.4	27.9	32.4	32.7	32.2
17	C1	P	39	10.6	71.5	72.1	71.2	21.7	21.8	21.7	30.4	30.2	30.5
18	C2	P	49	10.3	83.3	83.2	83.2	28.4	28.2	28.4	34.1	33.9	34.1
19	C3	P	32	10.2	88.4	88.1	86.5	29.1	28.9	28.7	32.9	32.8	33.1
20	C4	P	39	8.8	64.9	64.8	64.7	18.9	18.7	18.8	29.1	28.8	29.1
21	C5	P	42	9.5	75.0	74.0	73.0	25.4	25.0	25.0	33.6	33.7	34.1
22	C6	P	63	10.5	81.0	81.0	83.0	27.4	27.9	27.8	34.0	33.9	33.5
23	C7	P	64	7.8	86.0	87.0	87.0	28.6	28.5	29.2	33.2	32.7	33.6
24	C8	P	42	10.2	69.0	69.0	70.0	23.3	23.0	23.5	33.8	33.3	33.6
25	D1	P	48	11.0	89.4	90.4	89.2	29.3	29.4	29.0	32.7	32.6	32.5
26	D2	L	51	5.3	72.2	72.2	71.4	21.6	21.6	21.6	29.9	29.9	30.3
27	D3	L	30	11.1	77.5	77.4	76.8	27.1	26.4	26.6	35.0	34.2	34.6
28	D4	L	67	8.2	100.0	100.0	100.0	33.1	33.4	33.0	32.9	33.5	33.0
29	D5	P	52	9.6	75.0	75.0	75.0	25.6	25.8	25.5	34.4	34.5	34.1
30	D6	L	27	11.0	77.8	78.1	76.9	25.4	25.3	25.5	32.6	32.4	33.1
31	D7	P	66	11.1	86.0	86.0	86.0	29.6	29.7	29.3	34.5	34.4	33.9
32	D8	P	65	9.7	79.9	79.9	79.8	29.0	28.7	28.9	36.3	36.0	36.2

## LAMPIRAN II

### SKEMA KERJA



### LAMPIRAN III

#### HASIL UJI STATISTIK (UJI T BERPASANGAN)

Paired Samples Statistics

		Mean	N	Std. Deviation	Std. Error Mean
Pair 1	MCV1	80.194	32	8.7282	1.5429
	MCV2	80.325	32	8.7659	1.5496
Pair 2	MCV1	80.194	32	8.7282	1.5429
	MCV3	80.150	32	8.7485	1.5465
Pair 3	MCV2	80.325	32	8.7659	1.5496
	MCV3	80.150	32	8.7485	1.5465
Pair 4	MCH1	26.750	32	3.4307	.6065
	MCH2	26.725	32	3.4480	.6095
Pair 5	MCH1	26.750	32	3.4307	.6065
	MCH3	26.734	32	3.4173	.6041
Pair 6	MCH2	26.725	32	3.4480	.6095
	MCH3	26.734	32	3.4173	.6041
Pair 7	MCHC1	33.288	32	1.4352	.2537
	MCHC2	33.203	32	1.4266	.2522
Pair 8	MCHC2	33.203	32	1.4266	.2522
	MCHC3	33.303	32	1.3997	.2474
Pair 9	MCHC1	33.288	32	1.4352	.2537
	MCHC3	33.303	32	1.3997	.2474

Paired Samples Test

	Paired Differences					t	df	Sig. (2-tailed)	
	Mean	Std. Deviation	Std. Error Mean	95% Confidence Interval of the Difference					
				Lower	Upper				
Pair 1	MCV1 - MCV2	-.1312	.5331	.0942	-.3234	.0609	-1.393	31	.174
Pair 2	MCV1 - MCV3	.0438	.9432	.1667	-.2963	.3838	.262	31	.795
Pair 3	MCV2 - MCV3	.1750	.8854	.1565	-.1442	.4942	1.118	31	.272
Pair 4	MCH1 - MCH2	.0250	.2590	.0458	-.0684	.1184	.546	31	.589
Pair 5	MCH1 - MCH3	.0156	.3244	.0573	-.1013	.1326	.272	31	.787
Pair 6	MCH2 - MCH3	-.0094	.3125	.0552	-.1220	.1033	-.170	31	.866
Pair 7	MCHC1 - MCHC2	.0844	.3102	.0548	-.0274	.1962	1.539	31	.134
Pair 8	MCHC2 - MCHC3	-.1000	.4501	.0796	-.2623	.0623	-1.257	31	.218
Pair 9	MCHC1 - MCHC3	-.0156	.4601	.0813	-.1815	.1503	-.192	31	.849

**LAMPIRAN IV**  
**FOTO PENELITIAN**



Gambar 6. Bahan penelitian



Gambar 7. Alat Penelitian

