

DAFTAR PUSTAKA

- Bowles, Joseph E.1998 *Analisis dan Desain Pondasi Edisi Keempat Jilid 2*, Penerbit Erlangga, Jakarta.
- Forum Teknik Sipil No.XVII/3-September 2007. *Identifikasi Sebab-Sebab Kerusakan Oprit Jembatan dan Alternatif Penanganannya*.
- Hardiyatmo, Hary Christady. 2010.*Mekanika Tanah 1*, Gajah Mada University Press, Yogyakarta.
- Hardiyatmo, Hary Christady. 2007.*Mekanika Tanah 2*, Gajah Mada University Press, Yogyakarta.
- Hardiyatmo, Hary Christady. 2008.*Teknik Pondasi 2 Cetakan ke-4*, Beta Offset, Yogyakarta.
- Plaxis V.8. 2007.*Finite Element Code for Soil and Rock Analysis*. Software Manual and References..
- Smith, M.J. 1992.*Mekanika Tanah (Soil Mechanics) Edisi keempat*, Penerbit Erlangga, Jakarta.
- Sunggono, V.1995.*Buku Teknik Sipil*, Nova.Bandung
- .

Lampiran B Hasil Analisis Hubungan *Time-Displacement*

Lampiran B-1 Tabel Time-Displacement (U), STA 0+070

STA 0+070							
ZONA OPRIT BARAT				OPRIT BARAT			
Point	Step	Time [day]	U [m]	Point	Step	Time [day]	U [m]
0	0	0.00	0.00000	0	0	0.0000	0.00000
1	1	0.00	-0.00232	1	1	0.0000	0.00000
2	2	0.00	-0.00232	2	2	0.0000	0.00000
3	2	0.18	-0.00443	3	2	0.1811	0.00000
4	3	0.36	-0.00646	4	3	0.3623	0.00000
5	4	0.72	-0.01094	5	4	0.7245	0.00000
6	5	1.00	-0.01454	6	5	1.0000	0.00000
7	6	1.00	-0.01454	7	6	1.0000	0.00000
8	6	1.18	-0.01614	8	6	1.1811	0.00000
9	7	1.54	-0.01876	9	7	1.5434	0.00000
10	8	1.91	-0.02105	10	8	1.9057	0.00000
11	9	2.00	-0.02163	11	9	2.0000	0.00000
12	10	2.00	-0.02163	12	10	2.0000	0.00000
13	10	2.18	-0.02222	13	10	2.1811	-0.04925
14	11	2.23	-0.02236	14	11	2.2264	-0.04937
15	12	2.27	-0.02249	15	12	2.2717	-0.04948
16	13	2.36	-0.02271	16	13	2.3623	-0.04967
17	14	2.45	-0.02290	17	14	2.4528	-0.04984
18	15	2.54	-0.02308	18	15	2.5434	-0.04999
19	16	2.63	-0.02324	19	16	2.6340	-0.05012
20	17	2.82	-0.02353	20	17	2.8151	-0.05035
21	18	2.91	-0.02366	21	18	2.9057	-0.05046
22	19	3.09	-0.02391	22	19	3.0868	-0.05067
23	20	3.27	-0.02414	23	20	3.2679	-0.05086
24	21	3.36	-0.02425	24	21	3.3585	-0.05096
25	22	3.45	-0.02436	25	22	3.4491	-0.05105
26	23	3.63	-0.02457	26	23	3.6302	-0.05124
27	24	3.81	-0.02476	27	24	3.8113	-0.05142
28	25	4.17	-0.02514	28	25	4.1736	-0.05178
29	26	4.54	-0.02550	29	26	4.5358	-0.05212
30	27	4.90	-0.02584	30	27	4.8981	-0.05246
31	28	5.26	-0.02618	31	28	5.2604	-0.05279
32	29	5.98	-0.02681	32	29	5.9849	-0.05343
33	30	6.35	-0.02713	33	30	6.3472	-0.05375
34	31	7.00	-0.02767	34	31	7.0000	-0.05430

35	32	7.00	-0.02767
36	32	7.00	-0.02811
37	33	7.18	-0.03147
38	34	7.27	-0.03224
39	35	7.45	-0.03314
40	36	7.82	-0.03396
41	37	8.54	-0.03478
42	38	9.26	-0.03545
43	39	9.63	-0.03574
44	40	9.99	-0.03601
45	41	10.17	-0.03614
46	42	10.53	-0.03639
47	43	11.26	-0.03684
48	44	11.44	-0.03695
49	45	11.46	-0.03697
50	46	11.51	-0.03700
51	47	11.55	-0.03703
52	48	11.60	-0.03706
53	49	11.64	-0.03708
54	50	11.66	-0.03710
55	51	11.69	-0.03711
56	52	11.73	-0.03714
57	53	11.82	-0.03720
58	54	11.91	-0.03725
59	55	12.00	-0.03730
60	56	12.18	-0.03741
61	57	12.55	-0.03761
62	58	12.91	-0.03781
63	59	13.27	-0.03800
64	60	13.63	-0.03819
65	61	14.00	-0.03838
66	62	14.36	-0.03856
67	63	15.08	-0.03890
68	64	15.81	-0.03924
69	65	16.17	-0.03940
70	66	16.89	-0.03971
71	67	17.62	-0.04002
72	68	17.98	-0.04017
73	69	18.71	-0.04045
74	70	19.07	-0.04060
75	71	19.79	-0.04087
76	72	20.15	-0.04101

35	32	7.0000	-0.05430
36	32	7.0000	-0.05557
37	33	7.1811	-0.06161
38	34	7.2717	-0.06243
39	35	7.4528	-0.06337
40	36	7.8151	-0.06420
41	37	8.5396	-0.06497
42	38	9.2641	-0.06561
43	39	9.6264	-0.06589
44	40	9.9887	-0.06615
45	41	10.1698	-0.06627
46	42	10.5321	-0.06650
47	43	11.2566	-0.06692
48	44	11.4377	-0.06702
49	45	11.4604	-0.06703
50	46	11.5057	-0.06704
51	47	11.5509	-0.06706
52	48	11.5962	-0.06708
53	49	11.6415	-0.06710
54	50	11.6641	-0.06711
55	51	11.6868	-0.06712
56	52	11.7321	-0.06715
57	53	11.8226	-0.06720
58	54	11.9132	-0.06725
59	55	12.0038	-0.06730
60	56	12.1849	-0.06740
61	57	12.5472	-0.06759
62	58	12.9094	-0.06777
63	59	13.2717	-0.06795
64	60	13.6340	-0.06812
65	61	13.9962	-0.06828
66	62	14.3585	-0.06844
67	63	15.0830	-0.06874
68	64	15.8075	-0.06904
69	65	16.1698	-0.06918
70	66	16.8943	-0.06946
71	67	17.6189	-0.06973
72	68	17.9811	-0.06987
73	69	18.7056	-0.07013
74	70	19.0679	-0.07026
75	71	19.7924	-0.07051
76	72	20.1547	-0.07063

77	73	20.88	-0.04127
78	74	21.60	-0.04152
79	75	22.33	-0.04176
80	76	23.05	-0.04201
81	77	24.50	-0.04245
82	78	25.23	-0.04267
83	79	26.68	-0.04309
84	80	27.40	-0.04329
85	81	28.85	-0.04368
86	82	30.30	-0.04405
87	83	31.02	-0.04423
88	84	31.75	-0.04441
89	85	32.47	-0.04459
90	86	33.92	-0.04492
91	87	34.65	-0.04508
92	88	36.09	-0.04539
93	89	37.54	-0.04570
94	90	40.44	-0.04625
95	91	46.24	-0.04725
96	92	57.83	-0.04890
97	93	81.01	-0.05149
98	94	127.38	-0.05557
99	95	220.12	-0.06114
100	96	312.86	-0.06358
101	97	498.34	-0.06568
102	98	683.82	-0.06659
103	99	869.30	-0.06700
104	100	1054.78	-0.06718
105	101	1147.52	-0.06723
106	102	1240.26	-0.06727
107	103	1333.00	-0.06728
108	104	1379.37	-0.06729
109	105	1425.74	-0.06730
110	106	1518.48	-0.06731
111	107	1703.96	-0.06732
112	108	2007.00	-0.06732
113	109	2310.04	-0.06732

77	73	20.8792	-0.07087
78	74	21.6038	-0.07111
79	75	22.3283	-0.07134
80	76	23.0528	-0.07157
81	77	24.5019	-0.07199
82	78	25.2264	-0.07220
83	79	26.6754	-0.07259
84	80	27.4000	-0.07279
85	81	28.8490	-0.07316
86	82	30.2981	-0.07352
87	83	31.0226	-0.07370
88	84	31.7471	-0.07388
89	85	32.4717	-0.07405
90	86	33.9207	-0.07438
91	87	34.6452	-0.07455
92	88	36.0943	-0.07487
93	89	37.5434	-0.07518
94	90	40.4415	-0.07575
95	91	46.2377	-0.07682
96	92	57.8301	-0.07859
97	93	81.0150	-0.08145
98	94	127.3847	-0.08599
99	95	220.1242	-0.09221
100	96	312.8637	-0.09492
101	97	498.3427	-0.09724
102	98	683.8216	-0.09826
103	99	869.3006	-0.09870
104	100	1054.7796	-0.09890
105	101	1147.5190	-0.09897
106	102	1240.2585	-0.09900
107	103	1332.9980	-0.09902
108	104	1379.3678	-0.09903
109	105	1425.7375	-0.09904
110	106	1518.4770	-0.09905
111	107	1703.9560	-0.09906
112	108	2007.0000	-0.09906
113	109	2310.0440	-0.09907

Lampiran B-2 Tabel Time-Displacement, STA 0+090

STA 0+090							
ZONA OPRIT BARAT				OPRIT BARAT			
Point	Step	Time [day]	U [m]	Point	Step	Time [day]	U [m]
0	0	0.00	0.00000	0	0	0.0000	0.00000
1	1	0.00	-0.00539	1	1	0.0000	0.00000
2	2	0.00	-0.00539	2	2	0.0000	0.00000
3	2	0.19	-0.00802	3	2	0.1868	0.00000
4	3	0.56	-0.01304	4	3	0.5604	0.00000
5	4	1.00	-0.01958	5	4	1.0000	0.00000
6	5	1.00	-0.01958	6	5	1.0000	0.00000
7	5	1.09	-0.02048	7	5	1.0934	0.00000
8	6	1.19	-0.02150	8	6	1.1868	0.00000
9	7	1.28	-0.02250	9	7	1.2802	0.00000
10	8	1.37	-0.02343	10	8	1.3736	0.00000
11	9	1.47	-0.02427	11	9	1.4670	0.00000
12	10	1.56	-0.02505	12	10	1.5604	0.00000
13	11	1.75	-0.02658	13	11	1.7473	0.00000
14	12	1.93	-0.02799	14	12	1.9341	0.00000
15	13	2.00	-0.02848	15	13	2.0000	0.00000
16	14	2.00	-0.02848	16	14	2.0000	0.00000
17	14	2.05	-0.02869	17	14	2.0467	-0.03107
18	15	2.09	-0.02890	18	15	2.0934	-0.03129
19	16	2.19	-0.02931	19	16	2.1868	-0.03171
20	17	2.28	-0.02967	20	17	2.2802	-0.03209
21	18	2.47	-0.03030	21	18	2.4670	-0.03275
22	19	2.56	-0.03058	22	19	2.5604	-0.03304
23	20	2.65	-0.03085	23	20	2.6539	-0.03332
24	21	2.84	-0.03136	24	21	2.8407	-0.03386
25	22	3.03	-0.03184	25	22	3.0275	-0.03436
26	23	3.40	-0.03273	26	23	3.4011	-0.03530
27	24	4.15	-0.03434	27	24	4.1484	-0.03700
28	25	5.64	-0.03710	28	25	5.6429	-0.03996
29	26	7.00	-0.03926	29	26	7.0000	-0.04229
30	27	7.00	-0.03926	30	27	7.0000	-0.04229
31	27	7.00	-0.04138	31	27	7.0000	-0.04513
32	28	7.02	-0.04454	32	28	7.0234	-0.05084
33	29	7.04	-0.04438	33	29	7.0350	-0.05073
34	30	7.06	-0.04436	34	30	7.0584	-0.05078
35	31	7.06	-0.04437	35	31	7.0642	-0.05081
36	32	7.08	-0.04444	36	32	7.0759	-0.05089

37	33	7.10	-0.04460
38	34	7.15	-0.04500
39	35	7.24	-0.04594
40	36	7.43	-0.04786
41	37	7.80	-0.05086
42	38	8.55	-0.05410
43	39	10.04	-0.05599
44	40	13.03	-0.05868
45	41	19.01	-0.06408
46	42	30.96	-0.07172
47	43	54.88	-0.07829
48	44	102.70	-0.08203
49	45	198.35	-0.08332
50	46	389.65	-0.08356
51	47	772.25	-0.08358
52	48	1537.44	-0.08358
53	49	2007.00	-0.08358
54	50	2476.56	-0.08358

37	33	7.0992	-0.05107
38	34	7.1459	-0.05148
39	35	7.2394	-0.05243
40	36	7.4262	-0.05436
41	37	7.7998	-0.05736
42	38	8.5471	-0.06059
43	39	10.0416	-0.06247
44	40	13.0306	-0.06518
45	41	19.0087	-0.07062
46	42	30.9649	-0.07829
47	43	54.8772	-0.08486
48	44	102.7018	-0.08861
49	45	198.3510	-0.08990
50	46	389.6495	-0.09014
51	47	772.2465	-0.09016
52	48	1537.4405	-0.09016
53	49	2007.0000	-0.09016
54	50	2476.5595	-0.09016

Lampiran B-3 Tabel Time-Displacement, STA 0+100

STA 0+100							
ZONA OPRIT BARAT				OPRIT BARAT			
Point	Step	Time [day]	U [m]	Point	Step	Time [day]	U [m]
0	0	0.00000	0.00000	0	0	0.0000	0.0000
1	1	0.00000	-0.00390	1	1	0.0000	0.0000
2	2	0.00000	-0.00390	2	2	0.0000	0.0000
3	2	0.18968	-0.00573	3	2	0.1897	0.0000
4	3	0.37936	-0.00758	4	3	0.3794	0.0000
5	4	0.75873	-0.01169	5	4	0.7587	0.0000
6	5	1.00000	-0.01481	6	5	1.0000	0.0000
7	6	1.00000	-0.01481	7	6	1.0000	0.0000
8	6	1.18968	-0.01657	8	6	1.1897	0.0000
9	7	1.37936	-0.01843	9	7	1.3794	0.0000
10	8	1.56905	-0.02014	10	8	1.5690	0.0000
11	9	1.75873	-0.02167	11	9	1.7587	0.0000
12	10	1.94841	-0.02306	12	10	1.9484	0.0000
13	11	2.00000	-0.02342	13	11	2.0000	0.0000
14	12	2.00000	-0.02342	14	12	2.0000	0.0000
15	12	2.18968	-0.02388	15	12	2.1897	-0.0599
16	13	2.28452	-0.02417	16	13	2.2845	-0.0602

17	14	2.37936	-0.02445
18	15	2.47421	-0.02471
19	16	2.66389	-0.02517
20	17	2.75873	-0.02533
21	18	2.94841	-0.02561
22	19	3.32778	-0.02610
23	20	3.51746	-0.02634
24	21	3.70714	-0.02657
25	22	3.89682	-0.02679
26	23	4.08651	-0.02701
27	24	4.27619	-0.02722
28	25	4.46587	-0.02742
29	26	4.65555	-0.02762
30	27	5.03492	-0.02800
31	28	5.41428	-0.02837
32	29	5.79365	-0.02873
33	30	6.17301	-0.02908
34	31	7.00000	-0.02981
35	32	7.00000	-0.02981
36	32	7.00000	-0.03150
37	33	7.18968	-0.03508
38	34	7.28452	-0.03536
39	35	7.47421	-0.03593
40	36	7.85357	-0.03686
41	37	8.61230	-0.03777
42	38	9.37103	-0.03827
43	39	9.75039	-0.03852
44	40	10.50912	-0.03901
45	41	10.88849	-0.03926
46	42	11.64722	-0.03973
47	43	11.74206	-0.03979
48	44	11.75392	-0.03980
49	45	11.76577	-0.03981
50	46	11.78948	-0.03982
51	47	11.80134	-0.03983
52	48	11.82505	-0.03985
53	49	11.83690	-0.03986
54	50	11.84876	-0.03986
55	51	11.86061	-0.03987
56	52	11.88432	-0.03989
57	53	11.90803	-0.03990
58	54	11.95545	-0.03993

17	14	2.3794	-0.0604
18	15	2.4742	-0.0607
19	16	2.6639	-0.0611
20	17	2.7587	-0.0612
21	18	2.9484	-0.0614
22	19	3.3278	-0.0619
23	20	3.5175	-0.0621
24	21	3.7071	-0.0623
25	22	3.8968	-0.0625
26	23	4.0865	-0.0627
27	24	4.2762	-0.0629
28	25	4.4659	-0.0630
29	26	4.6556	-0.0632
30	27	5.0349	-0.0636
31	28	5.4143	-0.0640
32	29	5.7936	-0.0643
33	30	6.1730	-0.0647
34	31	7.0000	-0.0654
35	32	7.0000	-0.0654
36	32	7.0000	-0.0678
37	33	7.1897	-0.0736
38	34	7.2845	-0.0740
39	35	7.4742	-0.0746
40	36	7.8536	-0.0755
41	37	8.6123	-0.0764
42	38	9.3710	-0.0768
43	39	9.7504	-0.0771
44	40	10.5091	-0.0775
45	41	10.8885	-0.0778
46	42	11.6472	-0.0782
47	43	11.7421	-0.0782
48	44	11.7539	-0.0782
49	45	11.7658	-0.0782
50	46	11.7895	-0.0782
51	47	11.8013	-0.0782
52	48	11.8250	-0.0783
53	49	11.8369	-0.0783
54	50	11.8488	-0.0783
55	51	11.8606	-0.0783
56	52	11.8843	-0.0783
57	53	11.9080	-0.0783
58	54	11.9555	-0.0783

59	55	12.00287	-0.03996
60	56	12.05029	-0.03999
61	57	12.14513	-0.04004
62	58	12.19256	-0.04007
63	59	12.28740	-0.04013
64	60	12.47708	-0.04024
65	61	12.85644	-0.04046
66	62	13.23581	-0.04068
67	63	13.42549	-0.04078
68	64	13.52033	-0.04083
69	65	13.61517	-0.04089
70	66	13.80486	-0.04099
71	67	13.99454	-0.04109
72	68	14.08938	-0.04114
73	69	14.27906	-0.04124
74	70	14.46874	-0.04134
75	71	14.56359	-0.04139
76	72	14.75327	-0.04149
77	73	14.94295	-0.04159
78	74	15.13263	-0.04168
79	75	15.51200	-0.04187
80	76	15.89136	-0.04205
81	77	16.27073	-0.04223
82	78	17.02946	-0.04257
83	79	17.78819	-0.04290
84	80	18.16755	-0.04306
85	81	18.92628	-0.04337
86	82	19.68501	-0.04368
87	83	20.44374	-0.04397
88	84	21.20247	-0.04425
89	85	21.96120	-0.04453
90	86	22.71993	-0.04480
91	87	23.47866	-0.04506
92	88	24.23739	-0.04531
93	89	24.99612	-0.04555
94	90	25.75485	-0.04579
95	91	26.51358	-0.04603
96	92	28.03104	-0.04646
97	93	28.78977	-0.04668
98	94	30.30722	-0.04708
99	95	31.82468	-0.04747
100	96	33.34214	-0.04785

59	55	12.0029	-0.0784
60	56	12.0503	-0.0784
61	57	12.1451	-0.0784
62	58	12.1926	-0.0785
63	59	12.2874	-0.0785
64	60	12.4771	-0.0786
65	61	12.8564	-0.0788
66	62	13.2358	-0.0790
67	63	13.4255	-0.0791
68	64	13.5203	-0.0792
69	65	13.6152	-0.0792
70	66	13.8049	-0.0793
71	67	13.9945	-0.0794
72	68	14.0894	-0.0794
73	69	14.2791	-0.0795
74	70	14.4687	-0.0796
75	71	14.5636	-0.0796
76	72	14.7533	-0.0797
77	73	14.9430	-0.0798
78	74	15.1326	-0.0799
79	75	15.5120	-0.0801
80	76	15.8914	-0.0802
81	77	16.2707	-0.0804
82	78	17.0295	-0.0807
83	79	17.7882	-0.0810
84	80	18.1676	-0.0812
85	81	18.9263	-0.0814
86	82	19.6850	-0.0817
87	83	20.4437	-0.0820
88	84	21.2025	-0.0823
89	85	21.9612	-0.0825
90	86	22.7199	-0.0828
91	87	23.4787	-0.0830
92	88	24.2374	-0.0832
93	89	24.9961	-0.0835
94	90	25.7548	-0.0837
95	91	26.5136	-0.0839
96	92	28.0310	-0.0843
97	93	28.7898	-0.0845
98	94	30.3072	-0.0849
99	95	31.8247	-0.0853
100	96	33.3421	-0.0857

101	97	36.37706	-0.04854
102	98	37.13579	-0.04871
103	99	38.65325	-0.04903
104	100	41.68817	-0.04962
105	101	43.20563	-0.04991
106	102	46.24055	-0.05046
107	103	52.31038	-0.05141
108	104	64.45006	-0.05300
109	105	88.72940	-0.05561
110	106	137.28810	-0.05954
111	107	234.40548	-0.06439
112	108	428.64026	-0.06862
113	109	622.87503	-0.07029
114	110	817.10980	-0.07102
115	111	1011.34457	-0.07135
116	112	1205.57935	-0.07149
117	113	1302.69673	-0.07153
118	114	1496.93151	-0.07158
119	115	1751.96575	-0.07159
120	116	1815.72432	-0.07160
121	117	1879.48288	-0.07160
122	118	2007.00000	-0.07160
123	119	2134.51712	-0.07160

101	97	36.3771	-0.0864
102	98	37.1358	-0.0866
103	99	38.6532	-0.0869
104	100	41.6882	-0.0875
105	101	43.2056	-0.0878
106	102	46.2405	-0.0884
107	103	52.3104	-0.0894
108	104	64.4501	-0.0911
109	105	88.7294	-0.0939
110	106	137.2881	-0.0982
111	107	234.4055	-0.1036
112	108	428.6403	-0.1082
113	109	622.8750	-0.1100
114	110	817.1098	-0.1108
115	111	1011.3446	-0.1112
116	112	1205.5793	-0.1114
117	113	1302.6967	-0.1114
118	114	1496.9315	-0.1115
119	115	1751.9658	-0.1115
120	116	1815.7243	-0.1115
121	117	1879.4829	-0.1115
122	118	2007.0000	-0.1115
123	119	2134.5171	-0.1115

Lampiran C Hasil Analisis Hubungan Time-Active Pore Pressure

Lampiran C-1 Tabel Time-Active Pore Pressure, STA 0+070

Point	Step	Time [day]	Active PP [kN/m ²]
0	0	0.0000	0.0000
1	1	0.0000	-0.0945
2	2	0.0000	-0.0945
3	2	0.1811	-0.0176
4	3	0.3623	-0.0204
5	4	0.7245	-0.0248
6	5	1.0000	-0.0276
7	6	1.0000	-0.0276
8	6	1.1811	-0.1830
9	7	1.5434	-0.1878
10	8	1.9057	-0.1899
11	9	2.0000	-0.1905
12	10	2.0000	-0.1905
13	10	2.1811	-1.3753
14	11	2.2264	-1.5831
15	12	2.2717	-1.7502
16	13	2.3623	-2.0451
17	14	2.4528	-2.2549
18	15	2.5434	-2.4409
19	16	2.6340	-2.6120
20	17	2.8151	-2.9140
21	18	2.9057	-3.0682
22	19	3.0868	-3.3656
23	20	3.2679	-3.6552
24	21	3.3585	-3.8303
25	22	3.4491	-4.0606
26	23	3.6302	-4.5099
27	24	3.8113	-4.9492
28	25	4.1736	-5.7567
29	26	4.5358	-6.5100
30	27	4.8981	-7.2214
31	28	5.2604	-7.9159
32	29	5.9849	-9.1816
33	30	6.3472	-9.7871
34	31	7.0000	-10.8398
35	32	7.0000	-10.8398
36	32	7.0000	-11.2490

37	33	7.1811	-32.0314
38	34	7.2717	-31.7219
39	35	7.4528	-31.4811
40	36	7.8151	-31.9183
41	37	8.5396	-33.2563
42	38	9.2641	-34.0313
43	39	9.6264	-34.3207
44	40	9.9887	-34.5779
45	41	10.1698	-34.6718
46	42	10.5321	-34.8482
47	43	11.2566	-35.1132
48	44	11.4377	-35.1038
49	45	11.4604	-35.0493
50	46	11.5057	-34.9226
51	47	11.5509	-34.8055
52	48	11.5962	-34.7155
53	49	11.6415	-34.6547
54	50	11.6641	-34.6420
55	51	11.6868	-34.6430
56	52	11.7321	-34.6618
57	53	11.8226	-34.7038
58	54	11.9132	-34.7494
59	55	12.0038	-34.7997
60	56	12.1849	-34.8972
61	57	12.5472	-35.0653
62	58	12.9094	-35.2207
63	59	13.2717	-35.3620
64	60	13.6340	-35.4888
65	61	13.9962	-35.5965
66	62	14.3585	-35.6880
67	63	15.0830	-35.8467
68	64	15.8075	-35.9745
69	65	16.1698	-36.0313
70	66	16.8943	-36.1310
71	67	17.6189	-36.2163
72	68	17.9811	-36.2598
73	69	18.7056	-36.3397
74	70	19.0679	-36.3827
75	71	19.7924	-36.4734
76	72	20.1547	-36.5259
77	73	20.8792	-36.6196
78	74	21.6038	-36.7027
79	75	22.3283	-36.7827
80	76	23.0528	-36.8496

81	77	24.5019	-36.9563
82	78	25.2264	-37.0059
83	79	26.6754	-37.0691
84	80	27.4000	-37.1013
85	81	28.8490	-37.1324
86	82	30.2981	-37.1236
87	83	31.0226	-37.1202
88	84	31.7471	-37.1241
89	85	32.4717	-37.1338
90	86	33.9207	-37.1307
91	87	34.6452	-37.1318
92	88	36.0943	-37.1106
93	89	37.5434	-37.0559
94	90	40.4415	-36.8903
95	91	46.2377	-36.1667
96	92	57.8301	-34.3517
97	93	81.0150	-30.3221
98	94	127.3847	-22.6552
99	95	220.1242	-11.6110
100	96	312.8637	-7.1501
101	97	498.3427	-3.1515
102	98	683.8216	-1.3965
103	99	869.3006	-0.6221
104	100	1054.7796	-0.2778
105	101	1147.5190	-0.1708
106	102	1240.2585	-0.1049
107	103	1332.9980	-0.0699
108	104	1379.3678	-0.0527
109	105	1425.7375	-0.0397
110	106	1518.4770	-0.0205
111	107	1703.9560	-0.0028
112	108	2007.0000	0.0028
113	109	2310.0440	0.0033

Lampiran C-2 Tabel Time-Active Pore Pressure, STA 0+090

Point	Step	Time [day]	Active PP [kN/m ²]
0	0	0.0000	0.0000
1	1	0.0000	0.0000
2	2	0.0000	0.0000
3	2	0.1868	0.0000
4	3	0.5604	0.0000

5	4	1.0000	0.0000
6	5	1.0000	0.0000
7	5	1.0934	-0.0569
8	6	1.1868	-0.0562
9	7	1.2802	-0.0548
10	8	1.3736	-0.0540
11	9	1.4670	-0.0537
12	10	1.5604	-0.0535
13	11	1.7473	-0.0533
14	12	1.9341	-0.0536
15	13	2.0000	-0.0537
16	14	2.0000	-0.0537
17	14	2.0467	-0.5250
18	15	2.0934	-0.6630
19	16	2.1868	-0.6835
20	17	2.2802	-0.6684
21	18	2.4670	-0.6318
22	19	2.5604	-0.6178
23	20	2.6539	-0.6048
24	21	2.8407	-0.5767
25	22	3.0275	-0.5520
26	23	3.4011	-0.5078
27	24	4.1484	-0.4411
28	25	5.6429	-0.3627
29	26	7.0000	-0.3440
30	27	7.0000	-0.3440
31	27	7.0000	-7.6331
32	28	7.0234	-12.4858
33	29	7.0350	-9.2375
34	30	7.0584	-5.0191
35	31	7.0642	-4.1103
36	32	7.0759	-3.0475
37	33	7.0992	-1.5833
38	34	7.1459	-1.4840
39	35	7.2394	-1.2936
40	36	7.4262	-0.9434
41	37	7.7998	-0.7208
42	38	8.5471	-0.3966
43	39	10.0416	-0.3156
44	40	13.0306	-0.3050
45	41	19.0087	-0.2688
46	42	30.9649	-0.1583
47	43	54.8772	-0.0644
48	44	102.7018	-0.0185
49	45	198.3510	-0.0031

50	46	389.6495	-0.0003
51	47	772.2465	0.0000
52	48	1537.4405	0.0000
53	49	2007.0000	0.0000
54	50	2476.5595	0.0000

Lampiran C-3 Tabel Time-Active Pore Pressure, STA 0+100

Point	Step	Time [day]	Active PP [kN/m ²]
0	0	0.000000	0.000000
1	1	0.000000	-0.086522
2	2	0.000000	-0.086522
3	2	0.189682	-0.020117
4	3	0.379365	-0.023686
5	4	0.758730	-0.028960
6	5	1.000000	-0.031752
7	6	1.000000	-0.031752
8	6	1.189682	-0.254211
9	7	1.379365	-0.263317
10	8	1.569047	-0.264481
11	9	1.758730	-0.264401
12	10	1.948412	-0.265034
13	11	2.000000	-0.265202
14	12	2.000000	-0.265202
15	12	2.189682	-1.487187
16	13	2.284524	-1.933586
17	14	2.379365	-2.277275
18	15	2.474206	-2.550755
19	16	2.663888	-2.988313
20	17	2.758730	-3.187364
21	18	2.948412	-3.552145
22	19	3.327777	-4.193627
23	20	3.517459	-4.532634
24	21	3.707142	-4.885355
25	22	3.896824	-5.257085
26	23	4.086506	-5.646776
27	24	4.276189	-6.032833
28	25	4.465871	-6.424491
29	26	4.655554	-6.815238
30	27	5.034918	-7.574538

31	28	5.414283	-8.307803
32	29	5.793648	-9.027180
33	30	6.173013	-9.721337
34	31	7.000000	-11.129941
35	32	7.000000	-11.129941
36	32	7.000000	-11.539343
37	33	7.189682	-31.740987
38	34	7.284524	-31.481590
39	35	7.474206	-31.268456
40	36	7.853571	-31.691516
41	37	8.612300	-33.031912
42	38	9.371030	-33.922122
43	39	9.750395	-34.259600
44	40	10.509124	-34.812416
45	41	10.888489	-35.021570
46	42	11.647219	-35.333864
47	43	11.742060	-35.269526
48	44	11.753915	-35.218227
49	45	11.765770	-35.139850
50	46	11.789480	-34.970976
51	47	11.801336	-34.891123
52	48	11.825046	-34.757367
53	49	11.836901	-34.710461
54	50	11.848756	-34.684630
55	51	11.860611	-34.674179
56	52	11.884322	-34.668221
57	53	11.908032	-34.676387
58	54	11.955453	-34.703673
59	55	12.002873	-34.737210
60	56	12.050294	-34.776536
61	57	12.145135	-34.852985
62	58	12.192556	-34.892703
63	59	12.287397	-34.971115
64	60	12.477079	-35.116922
65	61	12.856444	-35.371992
66	62	13.235809	-35.576661
67	63	13.425491	-35.653212
68	64	13.520332	-35.664174
69	65	13.615174	-35.653597
70	66	13.804856	-35.631682
71	67	13.994538	-35.610541
72	68	14.089380	-35.604896
73	69	14.279062	-35.597358
74	70	14.468744	-35.605343

75	71	14.563586	-35.620057
76	72	14.753268	-35.659978
77	73	14.942950	-35.707702
78	74	15.132633	-35.760581
79	75	15.511998	-35.869754
80	76	15.891362	-35.983213
81	77	16.270727	-36.092221
82	78	17.029457	-36.290625
83	79	17.788186	-36.469050
84	80	18.167551	-36.553467
85	81	18.926281	-36.707617
86	82	19.685010	-36.842632
87	83	20.443740	-36.959840
88	84	21.202469	-37.064956
89	85	21.961199	-37.161476
90	86	22.719929	-37.251568
91	87	23.478658	-37.328653
92	88	24.237388	-37.397062
93	89	24.996117	-37.455681
94	90	25.754847	-37.508369
95	91	26.513576	-37.551064
96	92	28.031036	-37.610750
97	93	28.789765	-37.654686
98	94	30.307224	-37.704991
99	95	31.824684	-37.680557
100	96	33.342143	-37.634936
101	97	36.377061	-37.468388
102	98	37.135791	-37.450961
103	99	38.653250	-37.401123
104	100	41.688168	-37.225701
105	101	43.205627	-37.085538
106	102	46.240546	-36.743002
107	103	52.310382	-35.945583
108	104	64.450056	-34.038148
109	105	88.729402	-29.815175
110	106	137.288095	-22.642754
111	107	234.405482	-13.515916
112	108	428.640255	-5.552213
113	109	622.875028	-2.442250
114	110	817.109801	-1.075492
115	111	1011.344575	-0.475308
116	112	1205.579348	-0.210287
117	113	1302.696734	-0.128548
118	114	1496.931507	-0.041243
119	115	1751.965754	-0.019545

120	116	1815.724315	-0.013994
121	117	1879.482877	-0.009698
122	118	2007.000000	-0.003973
123	119	2134.517123	-0.000400



Foto.01 Pengukuran Elevasi Zona Oprit Barat
(Depan Gedung Graha Pena)

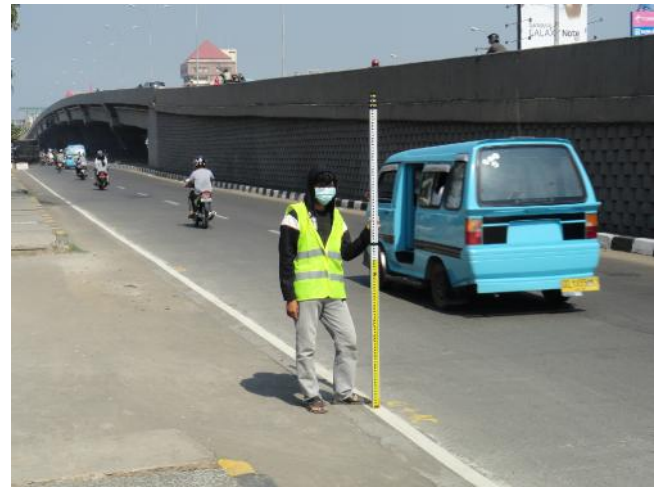


Foto.02 Pengukuran Elevasi Zona Oprit Barat
(Depan Gedung Kejaksaan)

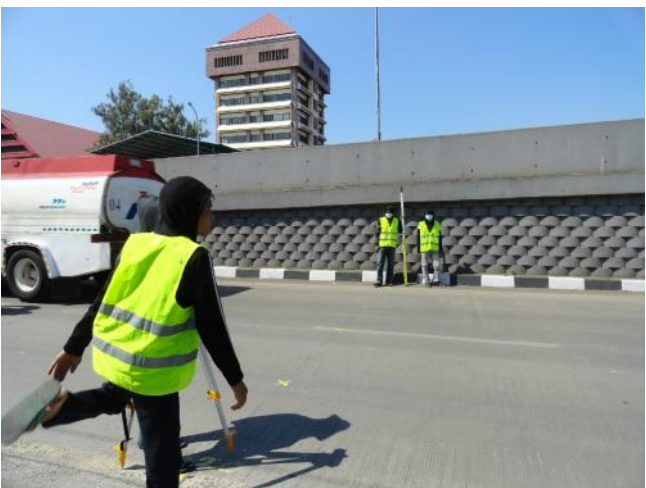


Foto.03 Pengukuran Elevasi Zona Oprit Timur
(Depan Show Room Hadji Kalla)



Foto.04 Pengukuran Elevasi Zona Oprit Timur
(Depan Gedung DPRD)



Foto.05 Pelaksanaan Sondir Titik S-01



Foto.06 Pelaksanaan Sondir Titik S-02