

## DAFTAR PUSTAKA

- Addy Suyatno, 2011, *Sistem Penilaian Resiko Tingkat Bahaya Kebakaran Hutan Berbasis Jaringan Syaraf Tiruan*, semnasIF2011, UPN “Veteran” Yogyakarta, 2 July 2011, ISSN: 1979-2328
- Adinugroho, Wahyu Catur. 2009. *Penebangan Liar (Illegal Logging), Sebuah Bencana Bagi Dunia Kehutanan Indonesia Yang Tak Kunjung terselesaikan*, Bogor: Institut Pertanian Bogor
- Agus Buono, Marimin, Diana Putri, 2004, *Klasifikasi Penutup dan Penggunaan Lahan pada Multispectral Image dari Landsat Thematic Mapper Menggunakan Probabilistic Neural Network*, Jurnal Ilmiah – Ilmu Komputer, Vol. 2 No. 2, Nopember 2004: pp. 1-13
- Arrijani dkk. April 2006. Analisis Vegetasi Hulu DAS Cianjur Taman Nasional Gunung Gede-Pangrango.  
<http://biodiversitas.mipa.uns.ac.id/D/D0702/D070212.pdf>.  
 diakses pada tanggal 1 Mei 2012
- Away, Gunaidi Abdia, 2010, *Matlab Programming*, Bandung: Penerbit Informatika
- Byun H, Lee S W. 2003. *A Survey on Pattern Recognition Applications of Support Vector Machines*. International Journal of Pattern Recognition and Artificial Intelligence, Vol.17, No.3, pp.459-486.
- C.C. Yang, S.O. Prasher, J. A. Landry, H.S. Ramaswamy, and A. Ditommaso, 2000, *Application of Artificial Neural Networks in image recognition and classification of crop and weeds*, Canadian Agricultural Engineering, Vol. 42, No.3: pp. 147-152
- Damir Klobucar, Renata Pernar, Sven Loncaric, Mako Subasic, Ante Seletkovic, Mario Ancic, 2010, *Detecting Forest Damage in Cir Aerial Photographs Using a Neural Network*, Original scientific paper – Izvorni znanstveni, Croat. j., for.eng. 31(2010)2: pp 157-163
- Danneberg, Roger. B., et al., 2007, *A comparative evaluation of search techniques for query-by-humming using the MUSART test bed*. *Journal of the American Society for Information Science and Technology*, vol. 58, no. 2, pp.687–701, diakses Januari 15, 2011 dari  
<http://citeseerx.ist.psu.edu/viewdoc/download?doi=10.1.1.70.4028&rep=rep1&type=pdf>

- Darampa, Sultan, 2010, *Lestarikan Hutan, Cukup Pandangi Saja*
- Dey, Subhrakanti, 2000, *Reduced-Complexity Filtering for Partially Observed Nearly Completely Decomposable Markov Chains*, IEEE Transactions on Signal Processing, Vol. 48, No. 12, Desember, 2000
- Dickerson, Kyle Britton, 2009, *Musical query-by-content using self-organizing maps*, Thesis, Brigham Young University, diakses November 2010 dari <http://contentdm.lib.byu.edu/ETD/image/etd2995.pdf>
- Drs. Jong Jek Siang, M.Sc., 2009, *Jaringan Syaraf Tiruan & Pemrogramannya Menggunakan MATLAB*, Yogyakarta: Penerbit Andi
- Dwi Rili Lestari, 2008, *Pengenalan Penyakit Darah dengan Citra Darah Menggunakan Metode Logika Fuzzy*, Universitas Indonesia.
- Harintaka, Imam Baskoro., 2006, *Kajian Pemanfaatan Jaringan Syaraf Tiruan untuk Klasifikasi Jenis Tanaman Pertanian Foto Udara Format Kecil*, Media Teknik No.4 Tahun XXVIII Edisi Nopember 2006, No.ISSN: 0216- 3012: pp. 3-10.
- Hartanti, Endah, 2004, *Deteksi Penebangan Liar Menggunakan Citra LandsatTM*, Sekolah Pascasarjana Institut Pertanian Bogor
- Hermawan, Arief, 2006, *Jaringan Syaraf Tiruan Teori dan Aplikasi*, Yogyakarta: Penerbit Andi
- Hery Purnomo, Mauridhi; Kurniawan, Agus, 2006, *Supervised Neural Networks dan Aplikasinya*, Yogyakarta: Graha Ilmu
- [http://acehpedia.org/Daerah\\_Aliran\\_Sungai](http://acehpedia.org/Daerah_Aliran_Sungai), diakses tanggal 1 Mei 2012
- <http://anoa5.wordpress.com/2010/05/08/perbedaan-discrete-cosine-transform-dct-dan-discrete-wavelet-transform-dwt/>  
diakses pada tanggal 11 November 2011.
- <http://dpd.go.id/2011/01/kesimpulan-rdpu-komite-ii-membahas-ruu-tentang-pencegahan-dan-pemberantasan-pembalakan-liar/>  
diakses pada tanggal 21 November 2011.
- <http://cskku.kkh.go.th/homework/ke/paper/predicting%20injection%20profiles%20using%20anfis.pdf>, diakses pada tanggal 3 November 2011
- <http://gicara.com/geografi-2/menghitung-luas-wilayah-pada-peta-menggunakan-sistem-grid.html>, diakses pada tanggal 15 Oktober 2011

[http://glovis.usgs.gov/AboutBrowse.shtml#landsat\\_etm\\_slc\\_off](http://glovis.usgs.gov/AboutBrowse.shtml#landsat_etm_slc_off) .

diakses pada tanggal 1 Juni 2012

<http://harrisfadilah.wordpress.com/2011/05/30/illegal-logging/>

diakses pada tanggal 28 September 2011

<http://landsat.gsfc.nasa.gov/education/compositor/>

diakses pada tanggal 15 Mei 2012

<http://mbojo.wordpress.com/2009/10/02/kenapa-banyak-indeks-vegetasi-menggunakan-panjang-gelombang-merah-dan-infra-merah-dekat/>

diakses pada tanggal 17 Mei 2012

<http://satelit-inderaja.blogspot.com/> diakses pada tanggal 30 Juni 2012

[http://trensains.com/neuro\\_fuzz.htm](http://trensains.com/neuro_fuzz.htm) diakses tanggal 28 September 2011

<http://www.slideshare.net/yaginov/sistem-inferensi-fuzzy>

diakses pada tanggal 28 September 2011

<http://www.scribd.com/doc/61755549/11/Teknik-Interpretasi-Visual>

diakses pada tanggal 28 September 2011

Iqbal, Muhammad, 2009, *Dasar Pengolahan Citra Menggunakan Matlab*, Institut Pertanian Bogor.

I Nengah Surati Jaya, 2005, Teknik Mendeteksi Lahan Longsor Menggunakan Citra SPOT Multiwaktu: Studi Kasus di Teradomari, Tochio dan Shitada Mura, Niigata, Jepang (*Landslide Detection Technique using Multidate SPOT Imageries: A Case Study in Teradomari, Tochio and Shitada Mura, Niigata, Japan*), Jurnal Manajemen Hutan Tropika Vol. X No. 1: pp. 31-48

Khayam, Syed Ali, 2003, *The Discrete Cosine Transform(DCT): Theory and Application*. Michigan State University: Department of Electrical & Computer Engineering.

Kiki, Sri Kusumadewi. *Analisis Jaringan Syaraf Tiruan dengan Metode Backpropagation Untuk Mendeteksi Gangguan Psikologi*

Krogh, A., Brown, M., Mian, I.S., Sjölander, K., Haussler, D., 1992, *Hidden Markov Models in Computational Biology : Application to Protein Modeling*, University of California, Santa Cruz

Kusuma, Wahyu & Irwan Arifin, 2006, *Analisis penyamaan pitch interval sinyal melodi senandung untuk pencarian lagu*. Seminar Ilmiah Nasional Komputer dan Sistem Inteligen (KOMMIT 2006). diakses Januari 2011,

[http://repository.gunadarma.ac.id:8000/Representasi\\_Chord\\_Wahyu\\_Kusuma\\_dkk\\_edit\\_835.pdf](http://repository.gunadarma.ac.id:8000/Representasi_Chord_Wahyu_Kusuma_dkk_edit_835.pdf)

- Muhammad Arief Rahman Hakim, 2010, *Wood Parquet Classification based on GDLM texture Analysis With Backpropagation Method*, Gunadarma University
- Muller, Meinard., 2007, *Information retrieval for music and motion*, Berlin: Springer
- Munir Rinaldi, 2004. *Pengolahan Citra Digital dengan Pendekatan Algoritmik*, Informatika Bandung.
- N. Mokhtar, H. Arof and M. Iwahashi, 2010, *One Dimensional image processing for eye tracking using derivative dynamic Time Warping*, (Full length Research paper), Scientific Research and Essay, Vol.5(19): pp 2947-2955, 4 October 2010, ISSN: 1992-2248@2010 Academic Journals.
- Nugroho A S., Witarto A B., Handoko D., 2003, *Support Vector Machine: Teori dan aplikasinya dalam bioinformatika*, IlmuKomputer.com
- Nurul Hikmah, 2008, *Identifikasi Retina Mata Manusia Menggunakan Sistem Inferensi Neuro Fuzzy*, Universitas Indonesia.
- Otsu, Nobuyuki, 1979, *A Threshold Selection Method from Gray-level Histogram*, IEEE Transaction on Systems and Cybernetics, Vol SMC-9, No.1, Januari
- Peraturan Menteri Kehutanan Republik Indonesia Nomor:P.12/Menhut-II/2012 [http://www.dephut.go.id/apl/uploads/P.12\\_2012\\_RencanaTeknikRehabilitasiHutanLahanDAS.pdf](http://www.dephut.go.id/apl/uploads/P.12_2012_RencanaTeknikRehabilitasiHutanLahanDAS.pdf) , diakses pada tanggal 20 Juni 2012
- Purwandari, Nuraini. 2010. *Perbedaan Discrete Cosine Transform dan Discrete Wavelet Transform*. Depok: Universitas Gunadarma
- Prahasta, Eddy, Maret 2011, *Tutorial ArcGIS Desktop bidang Geodesi & geomatika*.
- Pramitarini, Yushintia, 2011, *Analisa Pengiriman Citra Terkompresi JPEG Dengan Teknik Spread Spektrum Direct Sequence(DS-SS)*, Surabaya: Institut Teknologi Sepuluh November
- Rabiner, L.R., 1989, *A Tutorial on Hidden Markov Models and Selected Applications in Speech Recognition*, Proceedings of the IEEE, Vol. 77, No. 2, pp. 257-286

- Rafael Gonzales, C., Richard E.Wood, 2008, *Digital Image Processing Third Edition*, [DIP3rdEd], Pearson Prentice Hall
- Rahmanti, Farah Zakiyah. 2010. *Pengelompokan Gambar Berdasarkan Warna Dan Bentuk Menggunakan FGKA (FAST GENETIC KMEANS ALGORITHM) Untuk Pencocokan Gambar*, Surabaya: Politeknik Elektronika Negeri Surabaya
- Rahmi, Julia, 2009, *Hubungan kerapatan tajuk dan penggunaan lahan berdasarkan analisis citra satelit dan sistem informasi geografis di taman nasional gunung leutser*,  
<http://repository.usu.ac.id/bitstream/123456789/7637/1/09E02718.pdf>  
 diakses pada tanggal 18 Mei 2012
- Santosh K. C., 2010, *Use of Dynamic Time Warping for object shape classification Through Signature*, Kathmandu University, Journal of Science, Engineering and Technology, Vol. 6 No.1, March 2010: 33-49
- Sela, Enny Itje; Harjoko, Agus, 2011, *Deteksi dan Identifikasi Objek Abnormal*, Yogyakarta
- Somya Adwan, Hamzah Arof, 2011, *Dynamic Time Warping Approach Toward Face Patterns Detection*, International Journal of Academic Research, vol.3 No.1, January 2011, part 1
- Sudiana, Dodi dan Diasmara, Elfa, 2008, *Analisis indeks vegetasi menggunakan data Satelit NOAA/AVHRR dan TERRA/AQUAMODIS*.  
<http://staff.ui.ac.id/internal/131944413/publikasi/dodi2.pdf> .  
 diakses pada tanggal 1 Juli 2012
- Syafruddin Syarif, Pingkan W., Trimurti F. R., Ady W. Paundu, 2011, *Pemanfaatan Adaptive Neuro Fuzzy Inference System Untuk Identifikasi Penebangan Liar*, pp. 245-252, Prosiding Konferensi Nasional Forum Teknik Elektro Indonesia (FORTEI) 2011
- Syafruddin Syarif, 2012, *Model Sistem Cerdas untuk Deteksi Awal Penebangan Liar pada Daerah Aliran Sungai Jeneberang*, Publikasi Ilmiah Rencana Penelitian, Program Doktor Teknik Sipil Program Pascasarjana Universitas Hasanuddin, Volume III, ISSN: 2087-7986
- Syafruddin Syarif, Nadjamuddin Harun, Muh. Tola, Indrabayu A., Rivanto P., Dionisius K. Dor, 2012, *Illegal Logging Detection With Neural Network Backpropagation Model*, pp. 225-230, Proceedings of 3<sup>rd</sup> Makassar International Conference on Electrical Engineering and Informatics (MICEEI 2012)

- S.Syarif, N.Harun, M.Tola, M.W.Tjaronge, *Early Detection for Forest Illegal Logging at River Basin Area*, pp. 502-507, IJET International Journal of Engineering and Technology, Volume 3 No. 5 May, 2013 ISSN: 2049-3444
- S.Syarif, N.Harun, M.Tola, M.W.Tjaronge, *Detection System of Illegal Logging Image Using Matching Process with Discrete Cosine Transform*, pp. 57-62, IJCER International Journal of Computational Engineering Research, Vol. 03 Issue. 6, June, 2013, ISSN: 2250-3005
- Tejaswi, Giri, 2007, *Manual On Deforestation, degradation, and Fragmentation Using Remote Sensing And GIS*, Roma
- Tsuda K, 2000, *Overview of Support Vector Machine*, Journal of IEICE, Vol.83, No.6, pp.460-466.
- Vapnik V.N. 1999. *"The Nature of Statistical Learning Theory"*, 2nd edition, Springer-Verlag, New York Berlin Heidelberg.
- Widodo, Prabowo Pudjo., Rahmandya Trias Handayanto, 2011, *Penerapan soft computing dengan MATLAB*.
- Winanti Winda. 2004, *Penyembunyian Pesan Citra Terkompresi JPEG, menggunakan Metode Spread Spektrume*, Institut Teknologi Bandung. Datasheet PIR35.
- Wijaya, Arief, 2005, *Application of Multi-Stage Classification To Detect Illegal Logging With The Use of Multi-Source Data*. International Institute For Geo-Information Science and Earth Observation. Enschede, Netherlands
- Wiweka dan Wawan Setiawan, 2005, *Pengembangan Model Multinomial Neural Network Dalam Konteks Klasifikasi Penutup Lahan*, Pertemuan Ilmiah Tahunan MAPIN XIV – Pemanfaatan Efektif Penginderaan Jauh untuk Peningkatan Kesejahteraan Bangsa, ITS.
- Yacouba Diallo, Guangdao Hu, Xingping Wen, 2009, *Applications of Remote Sensing in land use/land cover Change Detection in Puer and Simao Counties, Yunnan Province*, Journal of American Science, 5(4), 157-166. <http://www.americanscience.org>
- Yang, C and others, 2000, *Application of Artificial Neural Network in Image Recognition of Classification of Crop and Weeds*
- Yusran, 2010, *Evaluasi Kebijakan Kehutanan Nasional dan Implikasinya Terhadap Kelestarian Sumberdaya Hutan*, Pidato Penerimaan Jabatan Guru Besar dalam Bidang Kebijakan dan Perundang-Undangan Kehutanan, pada Fakultas Kehutanan Universitas Hasanuddin.

# LAMPIRAN

Contoh Foto Citra Kawasan Hutan Lindung Gowa, dapat dilihat pada L1-L5.

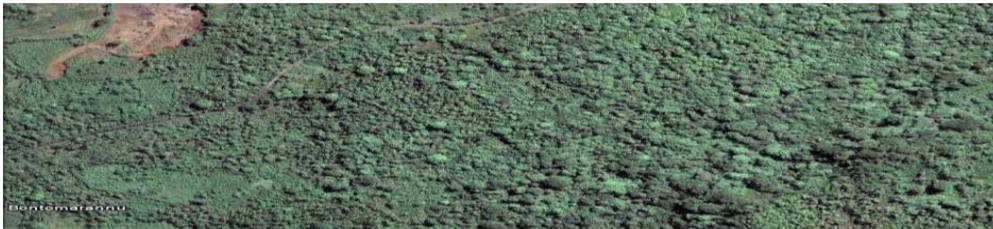


**L1.** Kawasan Hutan Lindung Gowa dibagi pertahunnya

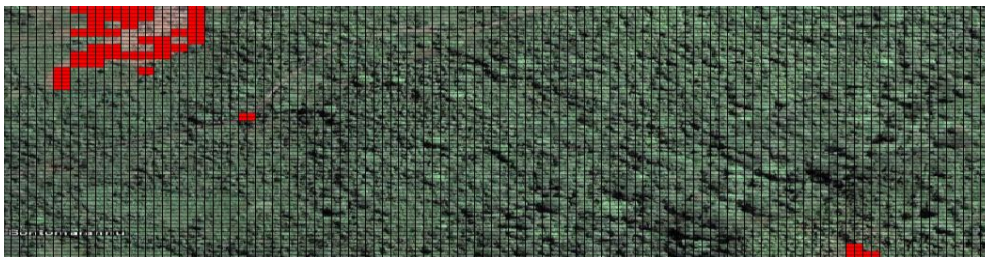
Titik Koordinat 5° 15' 46" - 5° 23' 51" 119.85911 - 119.97719-5.26385 - -5.39774



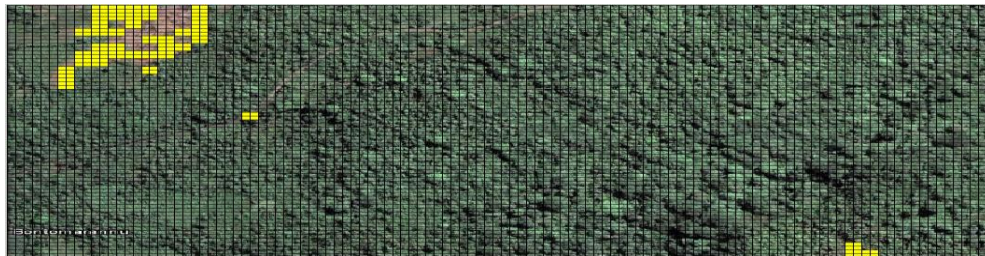
**L2.** Hutan Lindung Tahun 2009



**L3.** Citra *Input* Data Tahun 2009



**L4.** *Output* Sistem deteksi penebangan liar data tahun 2009



**L5.** *Output* Sistem untuk daerah penambahan luas penebangan



Data Citra Gowa Sebelum dan Sesudah di *blur*:

L6. Tahun 2007

25%



SEBELUM DETEKSI



SESUDAH DETEKSI

50%



SEBELUM DETEKSI

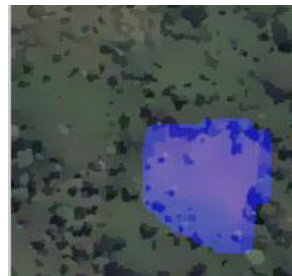


SESUDAH DETEKSI

75%

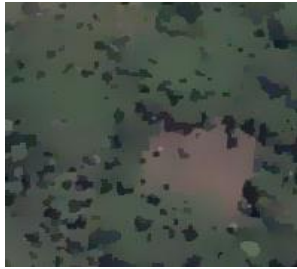


SEBELUM DETEKSI

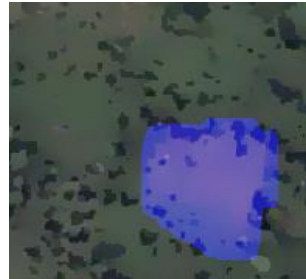


SESUDAH DETEKSI

**100%**



SEBELUM DETEKSI



SESUDAH DETEKSI

**L7. Tahun 2009**

**25%**



SEBELUM DETEKSI

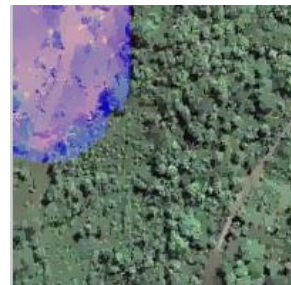


SESUDAH DETEKSI

**50%**



SEBELUM DETEKSI

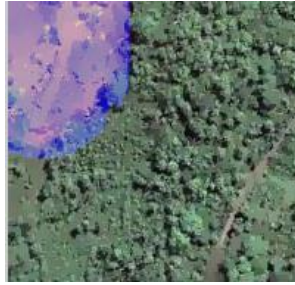


SESUDAH DETEKSI

**75%**



SEBELUM DETEKSI

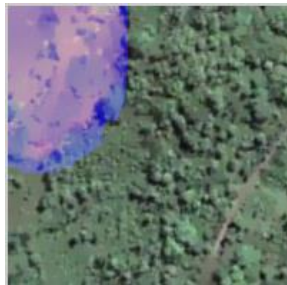


SESUDAH DETEKSI

**100%**

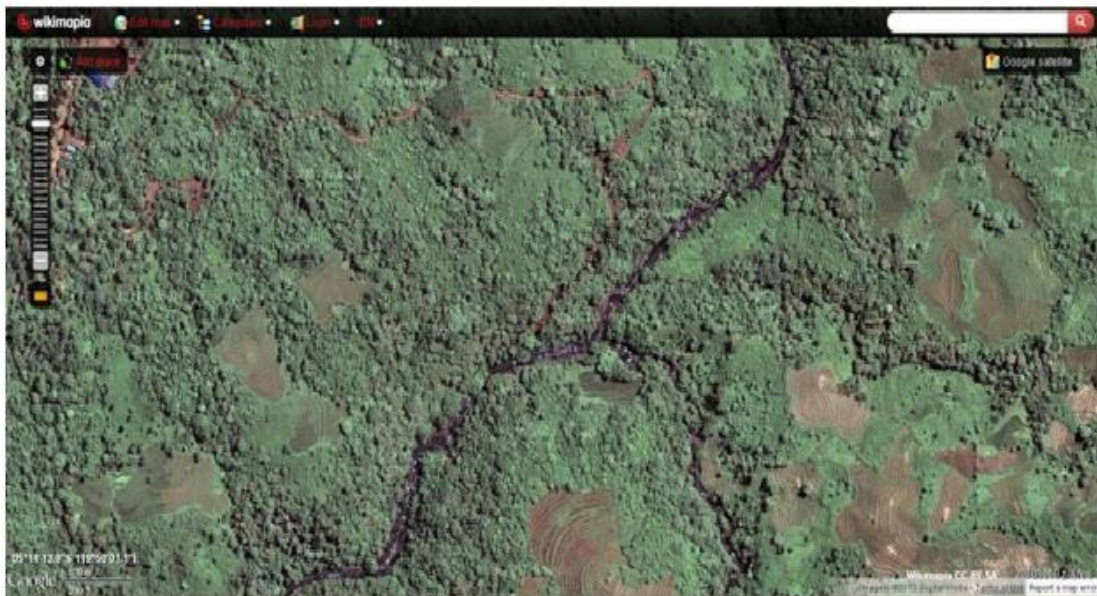


SEBELUM DETEKSI





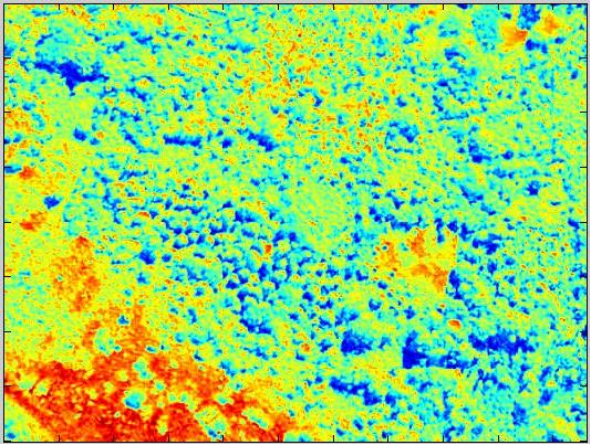
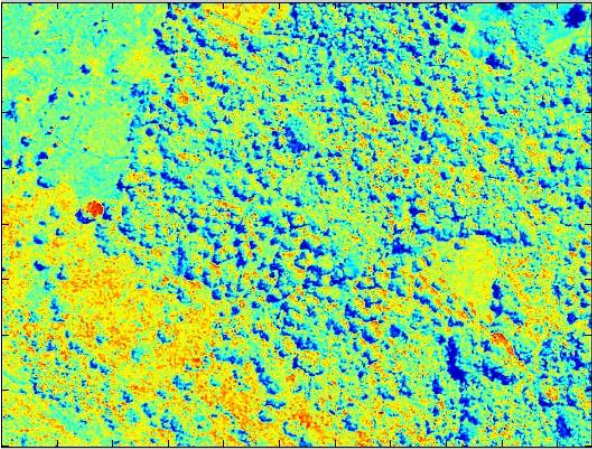
SESUDAH DETEKSI

Letak wilayahnya antara 12°33.19' - 13°15.17' BT dan 5°33.5' - 5°34.7' LS



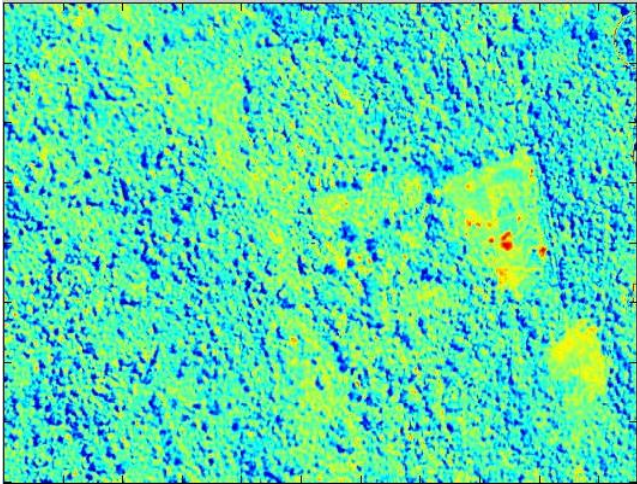
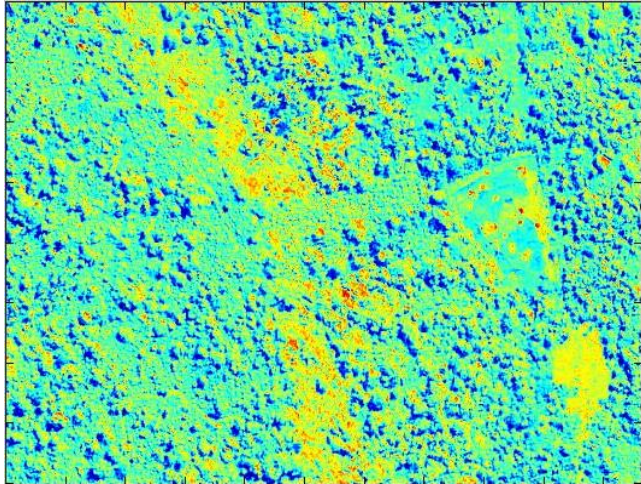


**L8.** Hutan Kabupaten Gowa



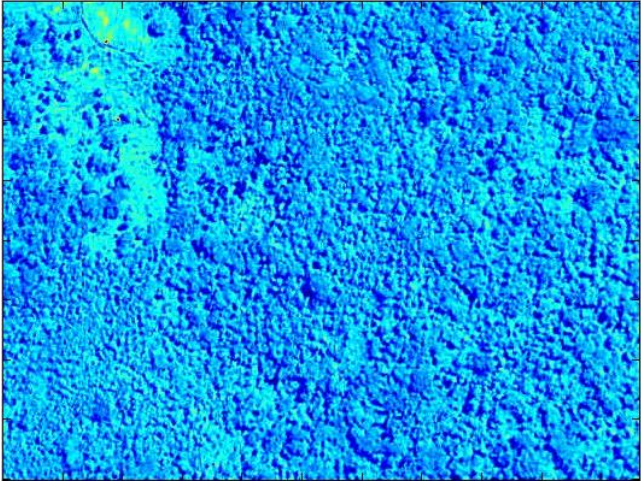
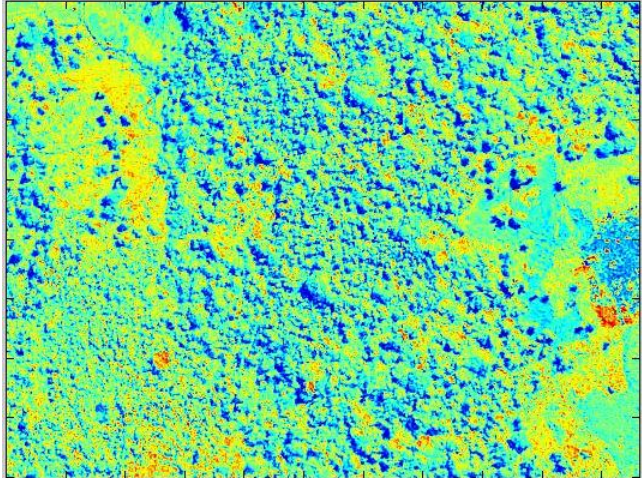
**L9. Data uji 1: Data Awal (tahun 2007) dan Data Akhir (tahun 2009)**

	Data Awal	Data Akhir
Citra		
Hasil Deteksi		



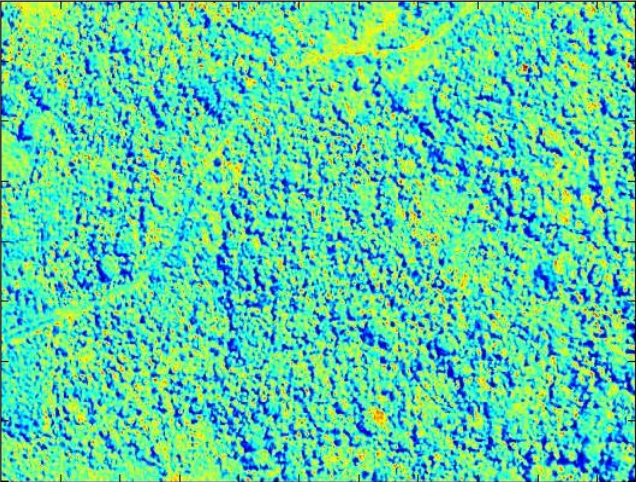
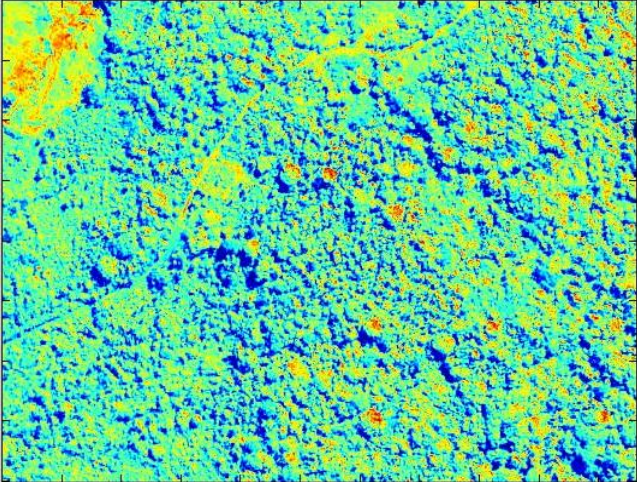
## L10. Data uji 2

	Data Awal	Data Akhir
Citra		
Hasil Deteksi		



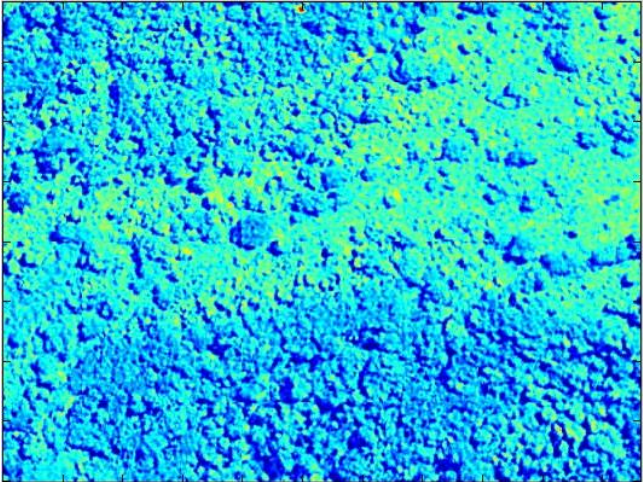
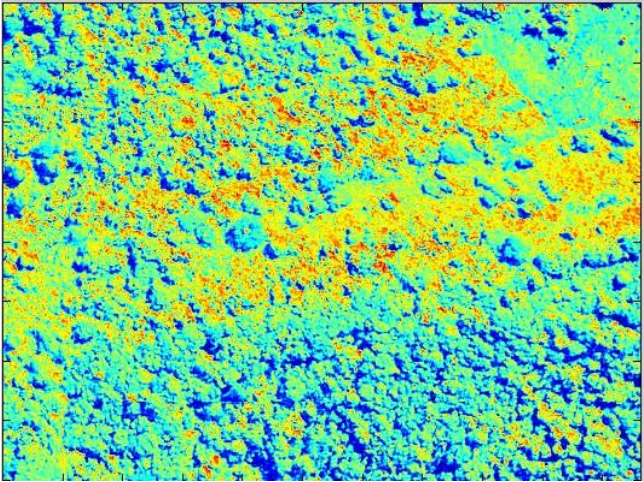
### L11. Data uji 3

	Data Awal	Data Akhir
Citra		
Hasil Deteksi		

L12. Data uji 4


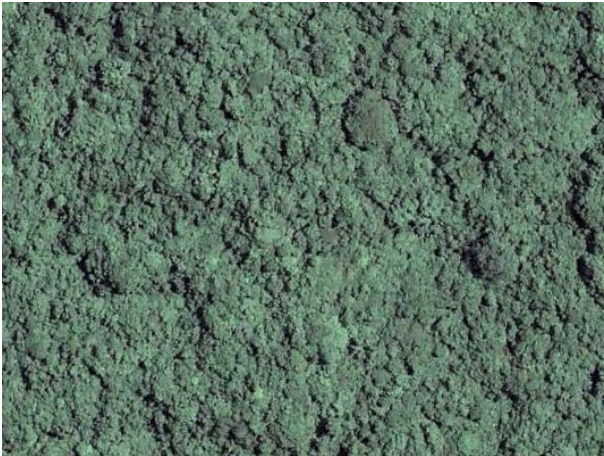
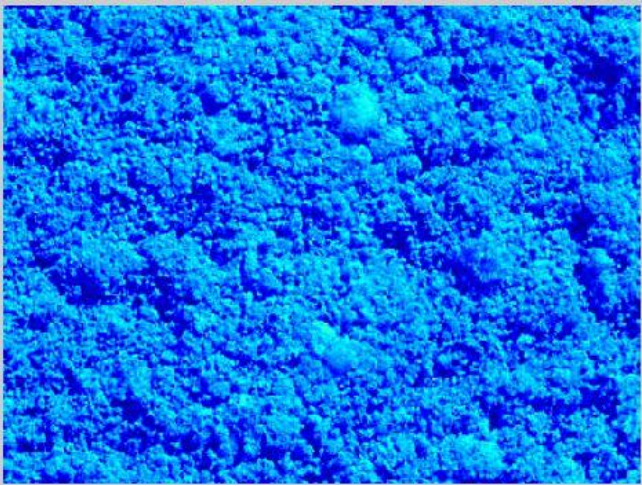
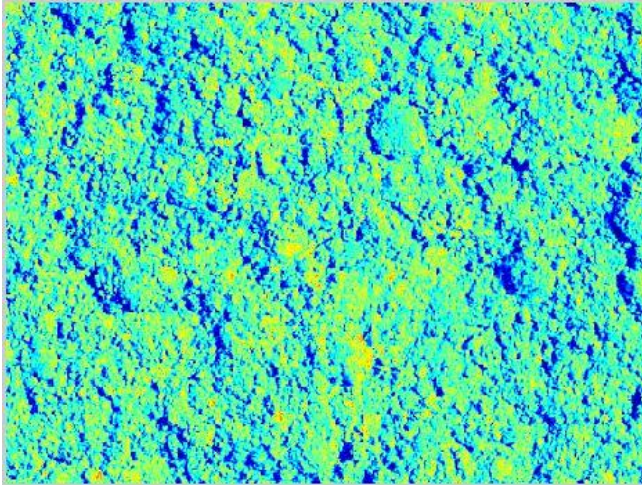
	Data Awal	Data Akhir
Citra		
Hasil Deteksi		

### L13. Data uji 5



	Data Awal	Data Akhir
Citra		
Hasil Deteksi		



### L14. Data uji 6

	Data Awal	Data Akhir
Citra	 A grayscale aerial photograph of a dense forest. The image shows a complex, textured pattern of tree canopies in various shades of gray, with a slightly darker, more uniform area in the upper right quadrant.	 A grayscale aerial photograph of a dense forest, similar to the 'Data Awal' image. However, the image has been processed with a filter that emphasizes the high-frequency components, resulting in a more granular and noisy appearance where individual tree crowns are more distinct.
Hasil Deteksi	 A detection map corresponding to the 'Data Awal' image. The entire image is rendered in shades of blue, with some lighter blue areas indicating higher intensity or specific features detected by the algorithm.	 A detection map corresponding to the 'Data Akhir' image. The image is rendered in shades of yellow and blue, with the yellow areas representing the detected features from the filtered image, showing a more detailed and noisy detection compared to the 'Data Awal' map.

**L15.** Hasil Deteksi untuk Data Citra ukuran 950m x 750m dengan Resolusi 700 x 420 pixel sebesar 2,41771 m<sup>2</sup>/pixel

	Data Awal	Data Akhir
Citra		
Hasil Deteksi	