

DAFTAR PUSTAKA

- Adeputri, E., Suryati, D., Pertanian, D., & Bengkulu, P. (2016). Penapisan Tiga Puluh Tujuh Genotipe Tomat dan Seleksi Primer RAPD untuk Toleransi terhadap Layu Bakteri (*Ralstonia solanacearum*) Screening of Thirty Seven Tomatoes Genotypes and RAPD Primer Selection for *Ralstonia solanacearum* Tolerance. *Akta Agrosia*, 19(1), 28–42.
- Andis. (2018). *Analisis Keragaman Genetik Anakan Jati (Tectona grandis Linn. f.) pada Berbagai provenansi berdasarkan Penanda Mikrosaelit.*
- Ardiyani, M., Sulistyaningsih, L. D., & Esthi, Y. N. (2014). Keragaman genetik *Tacca leontopetaloides* (L.) Kuntze (Taccaceae) dari beberapa provenansi di Indonesia berdasarkan marka inter simple sequence repeats (ISSR). *Berita Biologi*, 13(1), 85–96. <https://doi.org/10.14203/Beritabiologi.V13I1.657>
- Arıcı, M. (2019). Pengaruh Morfologi Eksplan Megagametofit dan Zat Pengatur Tumbuh terhadap Induksi Proliferasi Embrio Somatik Pinus merkusii Jung & Devr. pada Medium DCR. *Αγαη*, 8(5), 55.
- Chauhan, T., & Rajiv, K. (2010). Molecular markers and their applications in fisheries and aquaculture. *Advances in Bioscience and Biotechnology*, 01(04), 281–291. <https://doi.org/10.4236/abb.2010.14037>
- Effendy, E., Respatijarti, R., & Waluyo, B. (2018). Keragaman genetik dan heritabilitas karakter komponen hasil dan hasil ciplukan (*Physalis* sp.). *Jurnal Agro*, 5(1), 30–38. <https://doi.org/10.15575/1864>
- Fadhilah, S. A., Sartini, B. E., & Mahmud, S. L. A. (2015). Analysis of PCR Amplification of Date Palm (*Phoenix dactylifera* L.) Genotypes Based on RAPD Primers. *Virulensi Nuclear Polyherdosis Virus (NPV) Terhadap Ulat Grayak (Spodoptera Litura F.) (Lepidoptera : Noctuidae) Pada Tanaman Tembakau Deli Di Rumah Kaca*, 1(3), 678–688. <https://doi.org/10.32734/jaet>.
- Fitriani. (2019). *Analisis Keragaman Genetik Delapan Jenis Bambu Berdasarkan Penanda RAPD (Random Amplified Polymorphic).*
- Frianto, D., Rasyad, A., & Roslim, D. I. (2018). Keanekaragaman Genetik *Scorodocarpus Borneensis* di Riau Berdasarkan Penanda Molekuler RPAD. *Jurnal Penelitian Kehutanan Sumatera*, 2(1), 27–38.
- Gusmiaty, G., Restu, M., Asrianny, A., & Larekeng, S. H. (2017). Polimorfisme Penanda RAPD untuk Analisis Keragaman Genetik Pinusmerkusii di Hutan PendidikanUnhas. *JurnalNaturIndonesia*, 16(2), 47. <https://doi.org/10.31258/jnat.16.2.47-53>

- Gusmiaty, N.A Sari, T.N Safira, Budiaman, & S.H Larekeng. (2021). *Polimorfisme Penanda RAPD untuk Analisis Keragaman Genetik Kemiri Aleurites mollucana di Kabupaten Maros*. 6.
- Gusmiaty, Restu.Muh, & Ira, P. (2012). *Seleksi Primer untuk Analisis Keragaman Genetik Jenis Bitti (Vitex coffassus)*. 8(1), 25–29.
- Haines et al, 2019, goleman, daniel; boyatzis, Richard; Mckee, A., Haines et al, 2019, goleman, daniel; boyatzis, Richard; Mckee, A., Haines et al, 2019, & goleman, daniel; boyatzis, Richard; Mckee, A. (2019). Pedomam Teknis Pembangunan Sumber Daya Genetik. *Journal of Chemical Information and Modeling*, 53(9), 1689–1699.
- Izzah, N. K., & Reflinur, N. (2019). Pemilihan Tetua Persilangan pada Kubis (*Brassica oleracea* var. *capitata*) melalui Analisis Keragaman Genetik [Parental Line Selection in Cabbage (*Brassica oleracea* var. *capitata*) through Genetic Diversity Analysis]. *Jurnal Hortikultura*, 28(1), 33. <https://doi.org/10.21082/jhort.v28n1.2018.p33-40>.
- Juniarti, U., Mayun, I. M., & Diputra, M. (2013). *Keragaman Genetik Pinus merkusii Jungh . et de Vriese Strain Tapanuli Berdasarkan Penanda Mikrosatelit Diversity of Pinus merkusii Jungh . et de Vriese of Tapanuli Strain based on Microsatellite Markers*. 88–99.
- Langga, I. F., Restu, M., & Kuswinanti, T. (2012). Optimalisasi suhu dan lama inkubasi dalam ekstraksi dna tanaman bitti (*Vitex cofassus* Reinw) serta analisis keragaman genetik dengan teknik Rapd-PCR. *J. Sains & Teknologi*. 12 (3) : 265-276. Issn 1411-4674. *J Sains & Teknologi*, 12(3), 265–276.
- Lengkong, E. F. (2005). *Penggunaan Penanda Molekuler Random Amplified Polymorphic DNA (RAPD) untuk Analisis Keragaman Genetik Kelapa West African Tall (WAT)*. 3, 210–217.
- Makmur, M. F., Larekeng, S. H., & Restu, M. (2020). Genetic diversity of eight types of bamboo based on random amplified polymorphic DNA (rapd) markers. *Plant Archives*, 20, 2333–2337.
- Martono, B., Penelitian, B., Industri, T., Raya, J., & Km, P. (2018). ANALISIS Keragaman Genetik 21 Genotipe Teh [*Camellia sinensis* (L .) O . Kuntze] berdasarkan Penanda RAPD. *Journal of Industrial and Bererage Crops*, 5(2), 77–86.
- Pharmawati, M. (2001). *Optimalisasi Ekstraksi DNA dan PCR-RAPD pda Grevillea spp. (PROTEACEAE)*. 1, 12–16.

- Pusat Penelitian Biologi-LIPI. (2015). Barat [The Autecological Growth of Pine (Pinus merkusii Junghuhn et de Vriese) Post-Eruption at Galunggung Mountain, Tasikmalaya-West Java]. *Berita Biologi*, 14(3).
- Rimbawanto, A. (2006). Keragaman Populasi *Eusideroxylon zwageri* Kalimantan Timur berdasarkan Penanda RAPD (pp. 201–208).
- Saputra, M. H. (2019). *Potensi Pinus merkusii* Strain KericiI sebagai Penghasil Getah . November 2014.
- Sembiring, I. M. S., Putri, L. A. P., & Setiado, H. (2015). Aplikasi Penanda Lima Primer RAPD (Random Amplified Polimorphic DNA) untuk Analisis Keragaman Genetik. 4(1), 1748–1755.
- Sulistyawati, P., & Widyatmoko, A. (2017). Keragaman Genetik Populasi Kayu Merah (*Pterocarpus indicus* willd) Menggunakan Penanda Random Amplified Polymorphism DNA. *Jurnal Pemuliaan Tanaman Hutan*, 11(1), 67–76. <https://doi.org/10.20886/jpth.2017.11.1.67-76>
- Widyodaru, S. N. (2017). Optimasi Produksi Embrio Somatik Pinus merkusi Jungh. et de Vriese Menggunakan Teknik Kultur Cair. *Jurnal Agro*, 23(6), 13–17.
- Wolfman, L. S. B. A. (2013). Kekerabatan Genetik 15 Aksesori Plasma Nutfah Karet Hasil Ekspedisi 1981 Berdasarkan Penanda Molekuler. *Journal of Chemical Information and Modeling*, 53(9), 1689–1699. <https://doi.org/10.1017/CBO9781107415324.004>.
- Zulfahmi. (2013). Penanda DNA untuk Analisis Genetik Tanaman. *Jurnal Agroteknologi*, 3(2), 41–52.
- Zulfiana, A. S., Larekeng, S. H., & Restu, M. (2020). Amplification of rapid primers of Sugar Palm (*Arenga Pinnata* Merr) from South Sulawesi. *European Journal of Molecular and Clinical Medicine*, 7(2), 4514–4521.

Lampiran

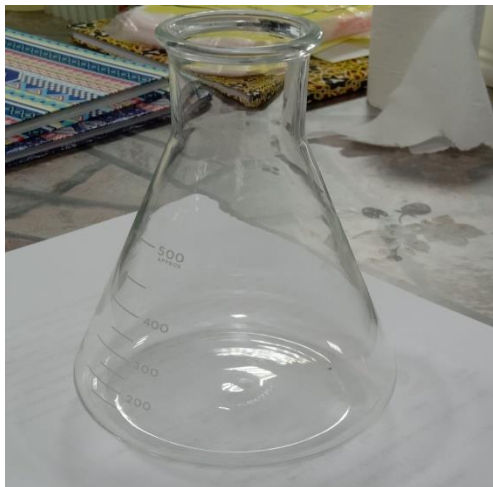
Lampiran 1. Dokumentasi alat yang digunakan



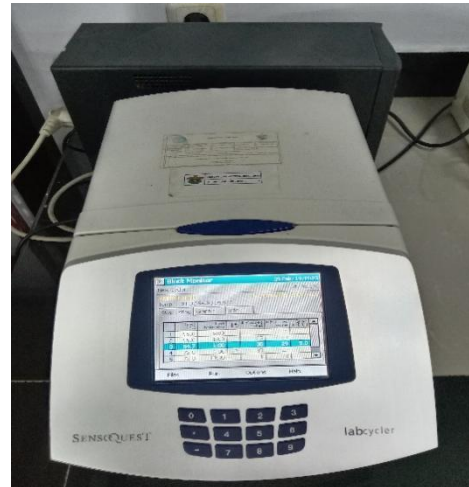
Gambar 1. Timbangan Analitik



Gambar 2. *Vortex*



Gambar 3. Gelas *Erlenmeyer*



Gambar 4. Mesin PCR



Gambar 5. Elektroforesis

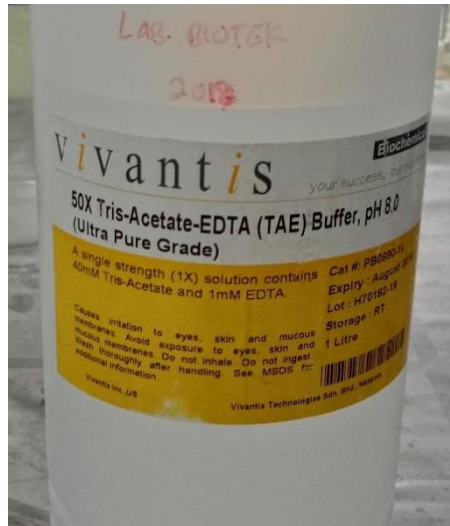


Gambar 6. *UV Transiluminator*



Gambar 7. *Mikropipet*

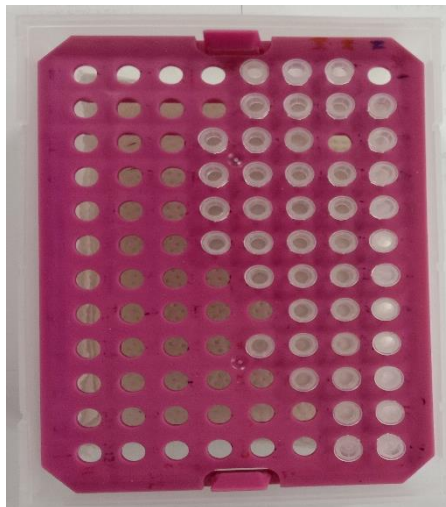
Lampiran 2. Dokumentasi bahan yang digunakan



Gambar 1. Larutan Buffer TAE
50x



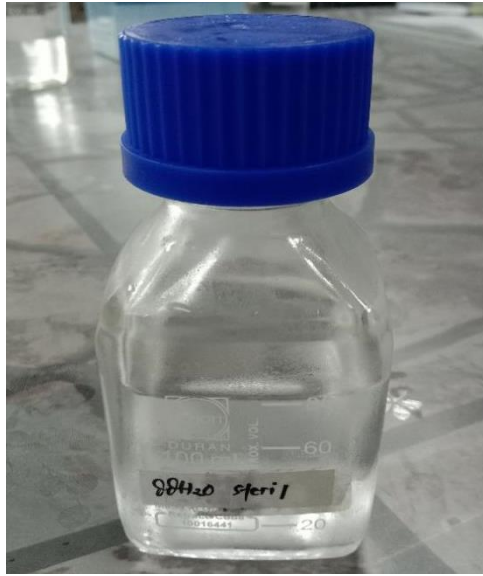
Gambar 2. Larutan Buffer TE 1x



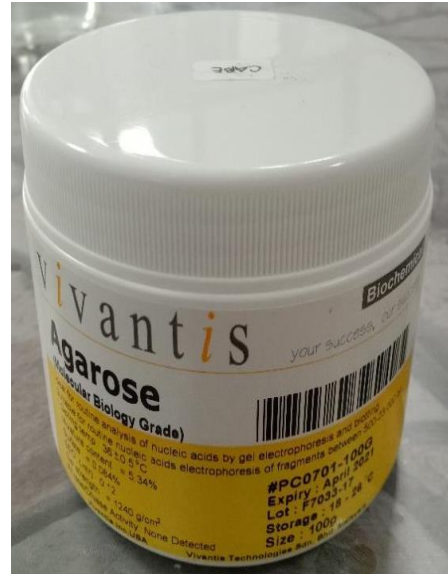
Gambar 3. Tip Putih



Gambar 4. Tip Kuning



Gambar 5. ddH₂O Steril

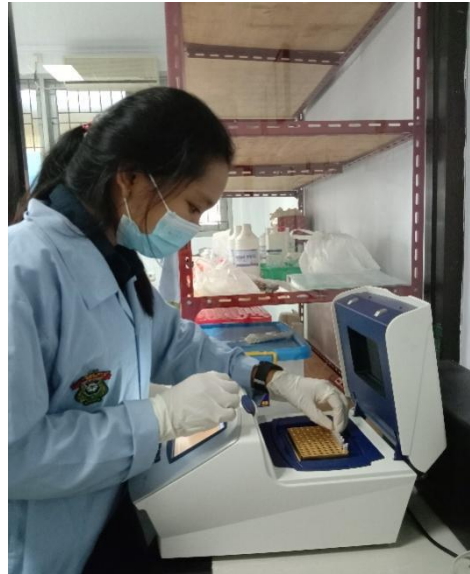


Gambar 6. Agarose

Lampiran 3. Dokumentasi Penelitian Molekuler di Laboratorium
Bioteknologi dan Pemuliaan pohon



Gambar 1. Proses Isolasi sampel daun
Pinus Rombeng



Gambar 2. Proses PCR

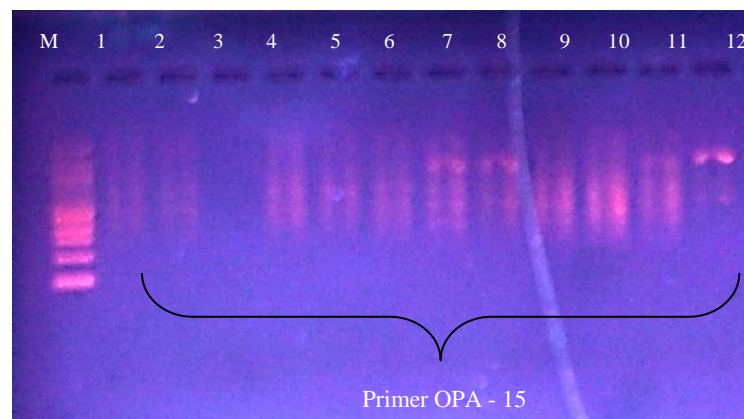
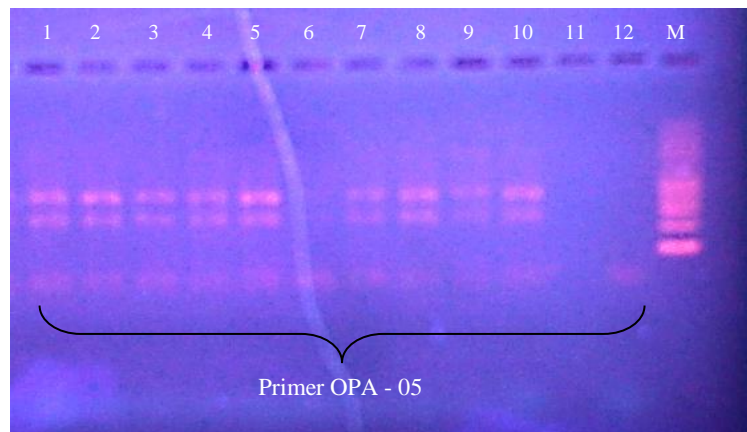
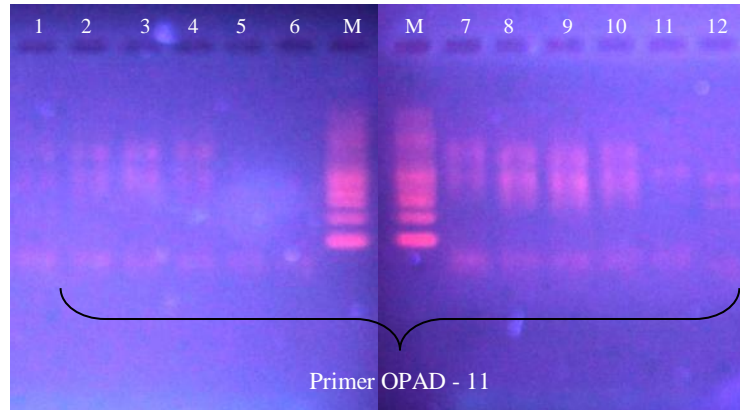


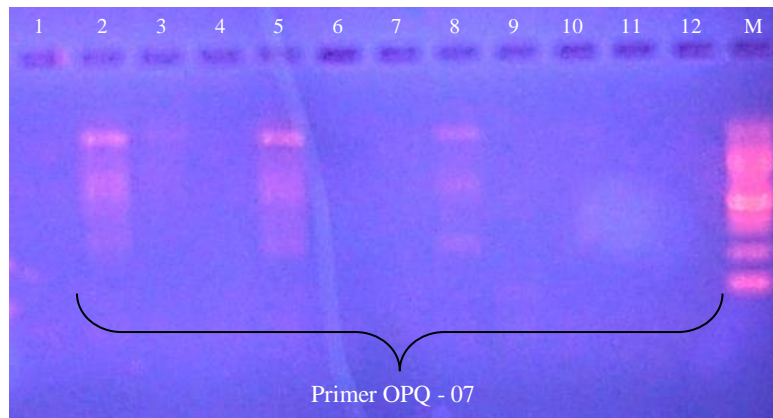
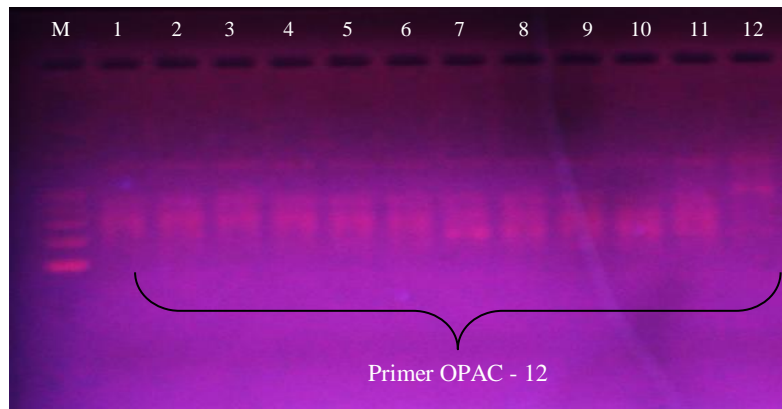
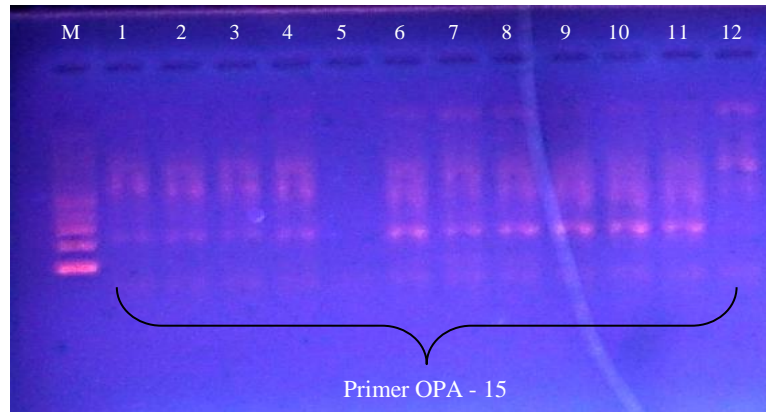
Gambar 3. Proses Elektroforesis

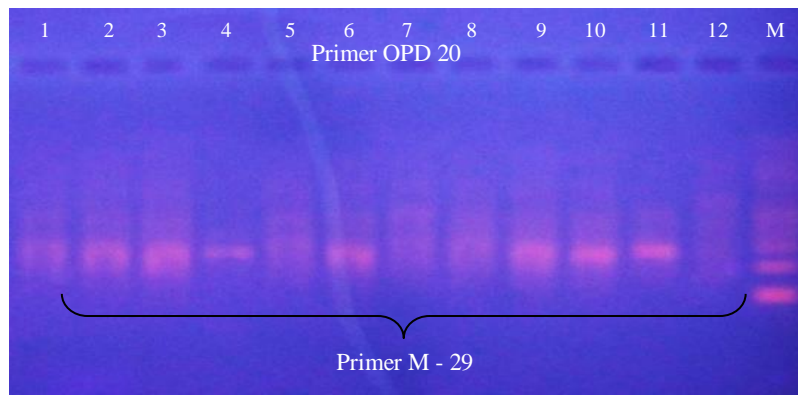
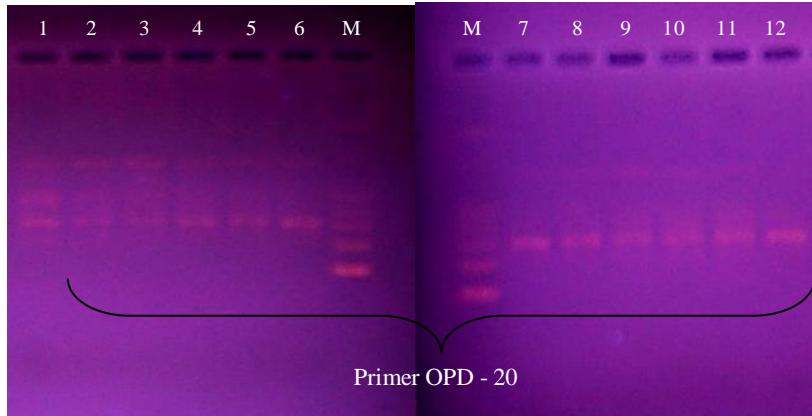


Gambar 4. Proses UV
Transiluminator (gel doc)

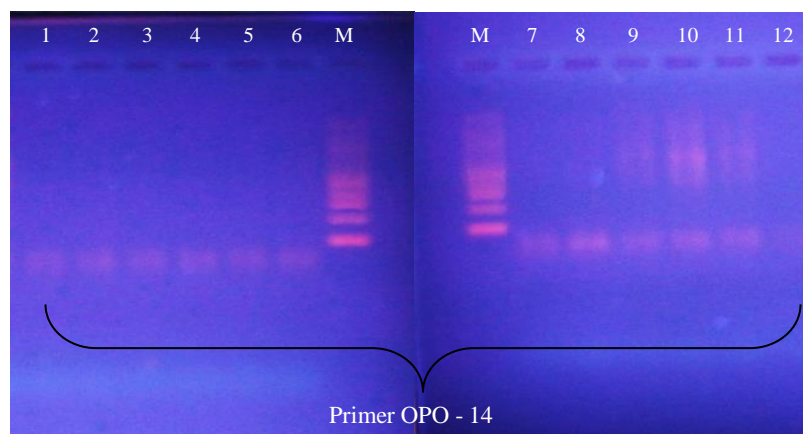
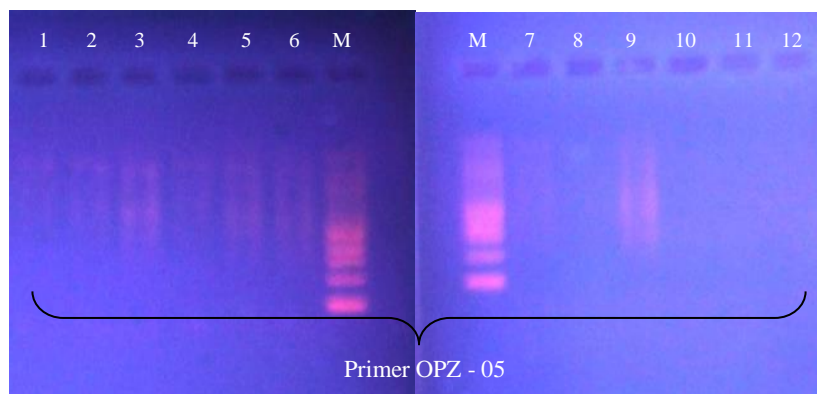
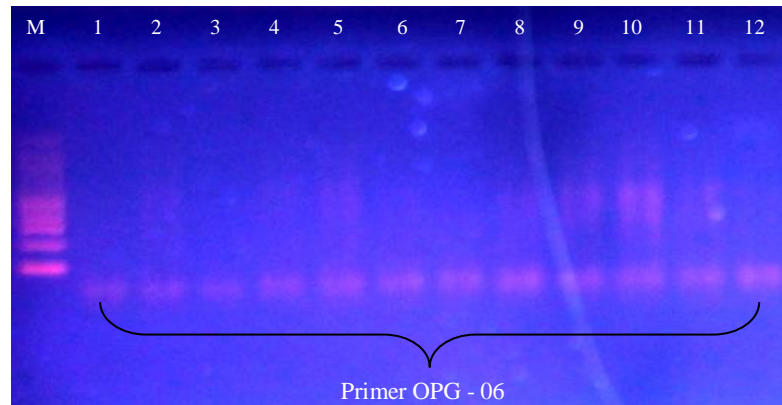
Lampiran 4. Elektroforegram Hasil Amplifikasi DNA Pita Jelas dan Polimorfik

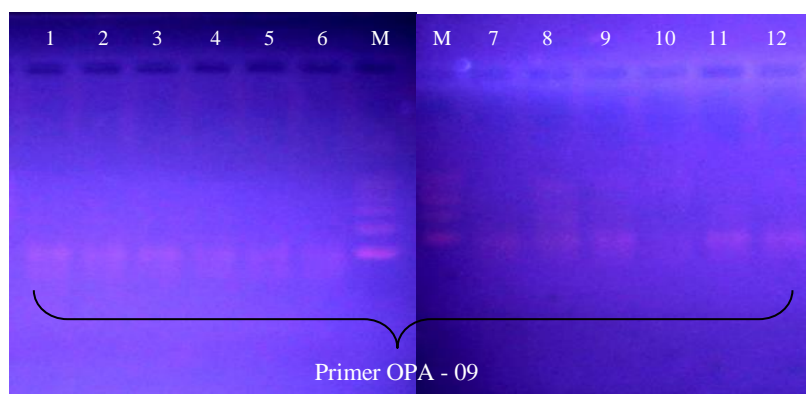
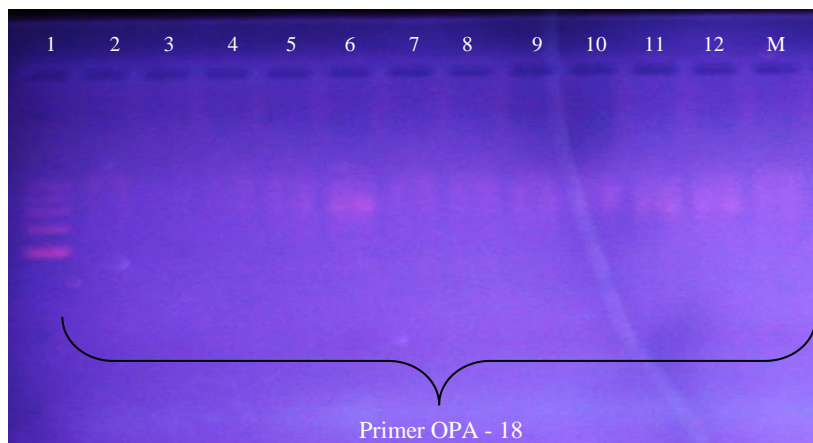
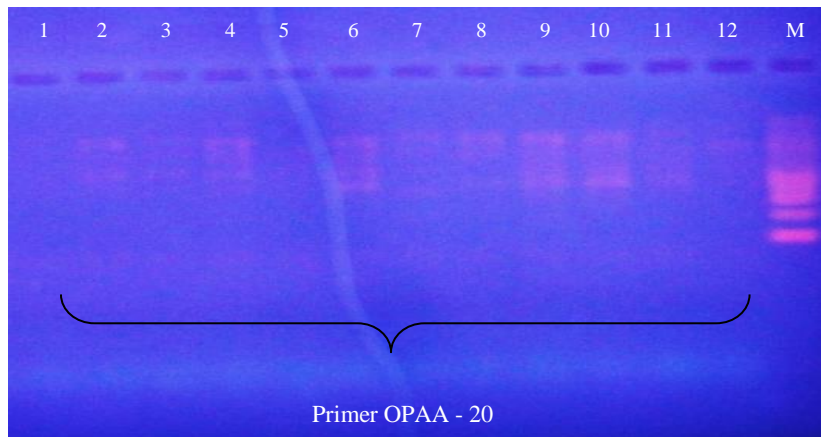


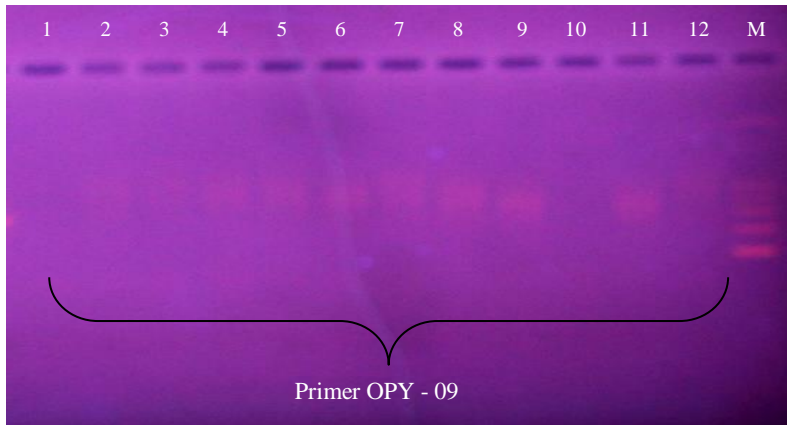
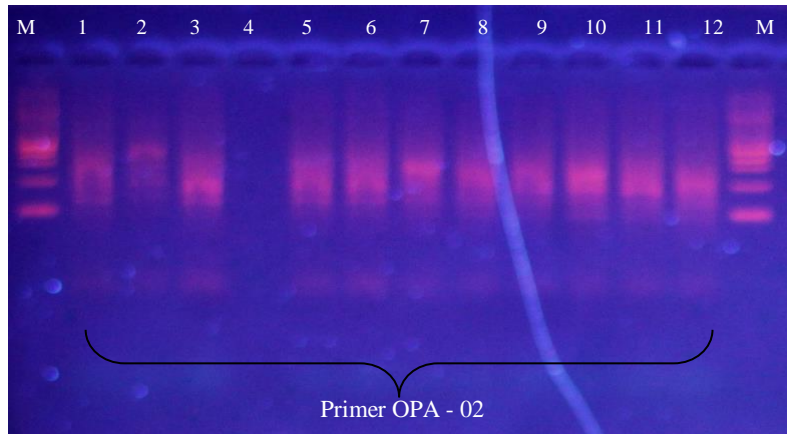
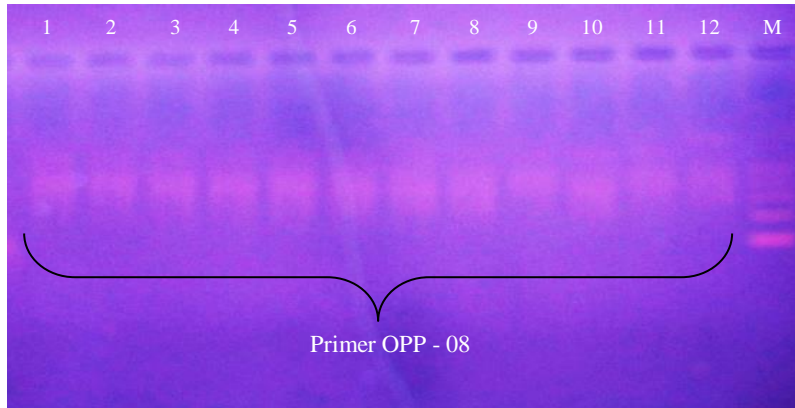




Lampiran 5. Elektroforegram Hasil Amplifikasi DNA Pita Kurang Jelas dan Polimorfik







Lampiran 6. Elektroforegram Hasil Amplifikasi DNA Pita yang tidak teramplifikasi

