

## DAFTAR PUSTAKA

- Anggraeini A., Hasanatun H., Ananda S., Herawati T. dan Tiesnamurti B., 2010. Penelusuran Penciri Genetik Terkait Sifat Kelahiran Kembar Melalui Runutan DNA Gen IGF-1 (Intron dan Ekson) dan Keunggulan Mutu Karkas (Empuk dan Kompak) pada Sapi Perah dan Potong. Balai Penelitian Ternak, Pusat Penelitian Dan Pengembangan Peternakan, Litbang Pertanian Kementerian Pertanian, Bogor.
- Anonim1, 2012. IGF-1 A Body Builder's Dream. <http://www.selfgrowth.com/articles/igf-1-a-body-builders-dream>. Diakses tanggal 11 januari 2012.
- Anonim2, 2012. Insulin-like Growth Factor 1. [http://en.wikipedia.org/wiki/Insulin-like\\_growth\\_factor\\_1](http://en.wikipedia.org/wiki/Insulin-like_growth_factor_1). diakses 11 januari 2012.
- Anonim3, 2012. Insulin-Like Growth Factor. [http://en.wikipedia.org/wiki/Insulin-like\\_growth\\_factor](http://en.wikipedia.org/wiki/Insulin-like_growth_factor). Diakses tanggal 29 Maret 2012.
- Anonim4, 2012. Struktur Tubuh Mahluk Hidup, <http://www.undiksha.ac.id/e-learning/staff/dsnmateri/4/3-118.pdf>. Diakses pada tanggal 09-03-2012.
- Beam, S.W., Butler, W.R., 1998. Energy Balance, Metabolic Hormones, and Early Postpartum Follicular Development in Dairy Cows Fed Prilled Lipid. J. Dairy Sci. 81, 121– 131.
- Benito, M., A. M. Valverde and M. Lorenzo, 1996. IGF-1: A Mitogen Also Involved in Differentiation Processes in Mammalian Cells. Int. J. Biochem. Cell Biol. 28, 499-510.

- Berry S.L., Ahmadi A., Thurmond M.C. (1994). Periparturient Disease on Large, Dry Lot Dairies: Interrelationships of Lactation, Dystocia, Calf Number, Calf Mortality, and Calf Sex. *J. Dairy Sci.* 77 (Suppl. 1): 379.
- Block J., Drost M., Monson R. L., Rutledge J. J., Rivera R. M., Paula-Lopes F. F., Ocon O. M., Krininger C. E., Liu J., and Hansen P. J., 2003. Use of Insulin-like Growth Factor-I During Embryo Culture and Treatment of Recipients with Gonadotropin-Releasing Hormone to Increase Pregnancy Rates Following the Transfer of in Vitro-produced Embryos to Heat-stressed, Lactating Cows. *J. Anim. Sci.* 2003. 81:1590–1602.
- Bozworth, R.W., G. Ward, E.P. Cal, and E.R. Bonewitz. 1971. Analysis of Factors Affecting Calving Interval of Dairy Cows. *Journal of Dairy Science* 55: 334-339.
- BPS, 2011. Sulawesi Selatan dalam Angka. Badan Pusat Statistik Provinsi Sulawesi Selatan, Makassar.
- Brassart, M., Y. Ainmelk, J.-P. Baillargeon, 2008. Basic Infertility Including Polycystic Ovary Syndrome. *Med. Clin. North. Am.* 92:1163-1192.
- Cady, R. A., and L. D. Van Vleck. 1978. Factors Affecting Twinning And Effects Of Twinning in Holstein Dairy Cattle. *J. Anim. Sci.* 46:950.
- Chang, S. J., Q. P. Cao and D. F. Steiner, 1990. Evolution of the Insulin Superfamily: Cloning of a Hybrid Insulin/ Insulin-like Growth Factor cDNA from *Amphioxus*. *Proc. Natl. Acad. Sci. USA* 87, 9319-9323.
- Coppola, D., A. Ouban and E. Gilbert-Barness, 2009. Expression of the Insulin-like Growth Factor Receptor 1 During Human Embryogenesis. *Fetal Pediatr. Pathol.* 28, 47-54.

- Darmadja, D. dan P. Sutedja. 1976. Masa Kebuntingan dan Interval Beranak pada Sapi Bali. Prosiding Seminar Reproduksi Sapi Bali. Universitas Udayana. Denpasar, Bali.
- Daughaday, W. H., K. Hall, M. S. Raben, W. D. Jr. Salmon, J. L. Van Den Brande and J.J. Van Wik, 1972, Somatomedin: Proposed Designation for Sulphation Factor. *Nature* 235, 107.
- Davendra, C. T. Lee Kok Choo and M. Phatmasingham. 1973. The Productivity of Bali Cattle in Malaysia. *Malaysian Agricultural Journal* 49: 183.
- Dees, W. L., V. Srivastava and J. K. Hiney, 2009. Actions and Interactions of Alcohol and Insulin-like Growth Factor-1 on Female Pubertal Development. *Alcohol Clin. Exp. Res.* 33, 1847-1856.
- De la Rosa R. X. F, Montoya H. M, Castrellón V. V, Rincón A. M. S, Bracamonte M. P, Vera W. A., 2010. Polymorphisms in the IGF1 gene and their effect on growth traits in Mexican beef cattle. *Genet Mol Res* 2010; 9: 875-83.
- Deluyker, H. A., J. M. Gay, L. D. Weaver, and A. S. Azairi. 1991. Change of Milk Yield with Clinical Diseases for a High Producing Dairy Herd. *J. Dairy Sci.* 74:436.
- de Rose, E. P., and J. W. Wilton. 1991. Productivity and Profitability of Twin Births in Beef Cattle. *J. Anim. Sci.* 69:3085.
- Druckman, R. and U. D. Rohr, 2002. IGF-1 in Gynaecology and Obstetrics: Update 2002. *Maturitas* 41, S65-S83.
- Dunn, T. G., and G. E. Moss. 1992. Effects of Nutrient Deficiencies and Excesses on Reproductive Efficiency of Livestock. *J. Anim. Sci.* 70:1580.

- Echternkamp S. E., 2000. Endocrinology of Increased Ovarian Folliculogenesis In Cattle Selected For Twin Births. Proceedings of the American Society of Animal Science, 1999.
- Echternkamp, S. E., and K. E. Gregory. 1999. Effects of Twinning on Gestation Length, Retained Placenta, and Dystocia. *J. Anim. Sci.* 77:39.
- Echternkamp SE, Gregory KE, Dickerson GE, Cundiff LV, Koch RM, Van VL, 1990. Twinning in cattle: II. Genetic and Environmental Effects on Ovulation Rate in Puberal Heifers and Postpartum Cows and the Effects of Ovulation Rate on Embryonic Survival. *J Anim Sci* 1990; 68:1877– 1888.
- Echternkamp, S. E., Spicer, L. J., Gregory, K. E., Canning, S. F., and Hammond, J. M., 1990. Concentrations of Insulin-Like Growth Factor-I in Blood and Ovarian Follicular Fluid of Cattle Selected for Twins. *Biology of Reprod.*, 43, 8-14.
- Etherton TD (2004). Somatotropic Function: the Somatomedin Hypothesis Revisited. *J. Anim. Sci.* 82 (E-Suppl): E239-E244.
- Erb, R. E., Anderson, W. R., Hinze, P. M., and Gildow, E. M., 1960. Inheritance of Twinning in a Herd of Holstein-Friesian Cattle. *J. Dairy Sci.*, 4, 393.
- Erb, R. E., and R. A. Morrison. 1959. Effects of Twinning on Reproductive Efficiency in a Holstein-Friesian Herd. *J. Dairy Sci.* 42:512.
- Erlich, H.A., 1989. PCR Technology: Principles and Applications for DNA Amplification. Stockton Press.
- Feradis, 2010. Reproduksi Ternak. Alfabeta, Bandung.

- Fortune, J. E., 1993, Follicular Dynamics During Bovine Estrous Cycle: A Limiting Factor in Improvement Fertility. *Animal Reproduction Science* 33: 111 – 125.
- Frandsen R. D., 1996. *Anatomi dan Fisiologi Ternak*. Gadjah Mada University Press, Yogyakarta.
- Fricke P. M., 2000. Review: Twinning in Dairy Cattle. *Prof Anim Sci* 2001;17:61–7.
- Fricke, P. M., and M. C. Wiltbank. 1999. Effect of Milk Production on the Incidence of Double Ovulation in Dairy Cows. *Theriogenology* 52:1133.
- Fricke, P. M., J. N. Guenther, and M. C. Wiltbank. 1998. Efficacy of Decreasing the Dose of GnRH Used in a Protocol for Synchronization of Ovulation and Timed AI in Lactating Dairy Cows. *Theriogenology* 50:1275.
- Froesch, E. R., H. Bürgi, E. B. Ramseier, P. Bally and A. Labhart, 1963. Antibody-Suppressible and non-Suppressible Insulin-like Activities in Human Serum and Their Physiologic Significance. An Insulin Assay with Adipose Tissue of Increased Precision and Specificity. *J. Clin. Invest.* 42, 1816-1834.
- Garcia, A., G. C. Van Der Weijden, B. Colenbrander and M. M. Bevers, 1999. Monitoring Follicular Development in Cattle by Real-Time Ultrasonography: A Review *veterinary Record* 145: 334-340.
- Ge W., Davis M. E., Hines H. C., Irvin K. M., Simmen R. C. M., 2001. Association of a genetic marker with blood serum insulin-like growth factor-I concentration and growth traits in Angus cattle. *J Anim Sci* 2001; 79: 1757-1762.

- Giampietro, A., D. Milardi, A. Bianchi, A. Fusco, V. Cimino, D. Valle, R. Marana, A. Pontecorvi and L. De Marinis, 2009. The Effect of Treatment with Growth Hormone on Fertility Outcome in Eugonadal Women with Growth Hormone Deficiency: Report of Four Cases and Review of the Literature. *Fertil. Steril.* 91, 930.e7-930.e11.
- Gibson J.M., Aplin J.D., White A., Westwood M., 2001 – Regulation of IGF Bioavailability in Pregnancy. *Molecular Human Reproduction* 7 (1), 79-87.
- Gilmore, L. O., 1952. *Dairy Cattle Breeding*. J. B. Lippincott Company, Philadelphia, Pennsylvania-USA.
- Ginther, O. J., D. R. Bergfelt, M. A. Beg and K. Ko., 2001. Follicle Selection in Cattle: Relationship among Growth Rate, Diameter Ranking, and Capacity of Dominance. *Biology of Reproduction* 65: 345-350.
- Gregory, K. E., G. L. Bennett, L. D. Van Vleck, S. E. Echterkamp, and L. V. Cundiff. 1997. Genetic and Environmental Parameters for Ovulation Rate, Twinning Rate, and Weight Traits in a Cattle Population Selected for Twinning. *J. Anim. Sci.* 75:1213.
- Gregory, K. E., Echterkamp, S. E., Dickerson, G. E., Cundiff, L. V., Koch, R. M., and Van Vleck, L. D., 1990. Twinning in Cattle: I. Foundation Animals and Genetic and Environmental Effects on Twinning Rate. *J. Anim. Sci.*, 68, 1867-1876.
- Grosse WM, Kappes SM, Laegreid WW, and Keele JW, 1999. Single Nucleotide Polymorphism (SNP) Discovery and Linkage Mapping of Bovine Cytokine Genes. *Mamm. Genome* 10: 1062-1069.
- Guerra-Martinez, P., G. E. Dickerson, G. B. Anderson, and R. D. Green. 1990. Embryotransfer twinning and performance efficiency in beef production. *J. Anim. Sci.* 68:4039.

- Hardjesubroto W, 1998. Pengantar Genetika Hewan. Fakultas Peternakan Universitas Gadjah Mada, Yogyakarta.
- \_\_\_\_\_, 1994. Aplikasi Pemuliabiakan Ternak di Lapangan. PT. Gramedia Widiasarana Indonesia, Jakarta.
- Hart R., 2008. PCOS and Infertility. *Panminerva Med.* 50, 305-314.
- Hendy, C. R. C. and Bowman, J. C., 1970. Twinning in Cattle. *Animal Breeding Abstracts*, 38, 22-37.
- Hewitt, A. C. T., 1934. Twinning in Cattle. *J. of Dairy Research*, 5, 101-107.
- Hwa, V., Y. Oh and R. G. Rosenfeld, 1999. The Insulin-like Growth Factor-binding Protein (IGFBP) Superfamily. *Endocr. Rev.* 20, 761-787.
- Jaenudeen, M.R., and E.S.E. Hafez. 1987. Reproductive Cycles: Cattle and Water Buffalo. In: Hafez, E.S.E. (ed.) *Reproduction in Farm Animals*. 5th ed. Philadelphia: Lea and Febiger.
- Jaiswal , R. S., J. Singh and G. P. Adams, 2004. Development Pattern of Small Antral Follicles in the Bovine Ovary. *Biology of Reproduction* 71: 1244-1251.
- Jamilah, 2002. Deteksi DNA Salmonella typhi dengan Menggunakan Nested Polymerase Chain Reaction (PCR). Jurusan Biologi Fakultas MIPA Universitas Hasanuddin, Makassar.
- Johanssen, I., B. Lindhe, and F. Pirchner. 1974. Causes of Variation in the Frequency of Monozigot and Dizigot Twinning in Various Breeds of Cattle. *Hereditas* 78:201.
- Karlsen, A., Ruane, J., Klemetsdal, G., and Heringstad, B., 2000. Twinning Rate in Norwegian Cattle: Frequency, (co)Variance Components, and Genetic Trends. *J. Anim. Sci.*, 78, 15-20.

- Kajimoto Y and Rotwein P, 1991. Structure of the Chicken Insulin-like Growth Factor I Gene Reveals Conserved Promoter Elements. *J. Biol. Chem.* 266: 9724-9731.
- Kay, R. M. 1984. Changes in Milk Production, Fertility, and Calf Mortality Associated with Retained Placentae or the Birth of Twins. *Vet. Rec.* 102:477.
- Kinsel, M. L., W. E. Marsh, P. L. Ruegg, and W. G. Etherington. 1998. Risk Factors for Twinning. *J. Dairy Sci.* 81:989.
- Kurniati R., Aryani., R., dan Nugroho, R. A., 2006. Reproduksi dan Embriologi. Diktat Kuliah. Fakultas Matematika dan Ilmu Pengetahuan Alam Universitas Mulawarman , Samarinda.
- Kustono, E. Baliarti, Mariono dan Aryogi. 2010. Lajuovulasi(Lebih Satu Ovum Per Ovulasi), Pola Hormon Reproduksi Pengatur Laju Ovulasi (*Follicle Stimulating Hormone, Luteinizing Hormone*) dan Eksplorasi Marka Genetik (Gen IGF-1 dan IGF 2) Sifat Kelahiran Kembar pada Sapi Potong Peranakan Ongole. Laporan Kegiatan Lembaga Penelitian dan Pengabdian Masyarakat Universitas Gadjah Mada dan Badan Penelitian dan Pengembangan Pertanian.
- Labhsetwar, A. P., Tyler, W. J., and Casida, L. E, 1963. Analysis of Variation in some Factors Affecting Multiple Ovulations in Holstein cattle. *J. Dairy Sci.*, 46, 840.
- Laron, Z. 2001. Insulin-like Growth Factor 1 (IGF-1): a Growth Hormone. *Mol Pathol* 54(5):311-316.
- Lestari F., 2003. PCR, Pendeteksi Cepat Virus SARS. *Kompas*, 25 April 2003 Hal. 10.
- Liwa A. M., 1990. Produktifitas Sapi Bali di Sulawesi Selatan. Disertasi, Fakultas Pasca Sarjana Institut Pertanian Bogor, Bogor.



- Lubis, A.M., dan P. Sitepu. 1998. Evaluasi Produktivitas Sapi Perah yang Terseleksi di Dua Lokasi Penelitian KUD Sarwa Mukti dan KUD Pasir Jambu. Prosiding Seminar Nasional Peternakan dan Veteriner. Bogor, 1-2 Desember 1998.
- Lucy MC, Staples CR, Thatcher WW, Erickson PS, Cleale RM, Firkins JL, Clark JH, Murphy MR, Brodie BO. Influence of Diet Composition, Dry-Matter Intake, Milk Production and Energy Balance on Time of Post-par-tum Ovulation and Fertility in Dairy Cows. *Anim Prod* 1992;54:323-331.
- Lush, R. H., 1925. Inheritance of Twinning in a Herd of Holstein Cattle. *The J. of Heredity*, 16, 273-279.
- Maj A., Snochowski M., Siadkowska E., Rowinska B., Lisowski P., Robaka-Hyzorek D., Oprzadek J., Grochowska R., Kochman K., Zwierzchowski L., 2008. Polymorphism in gene of growth hormone receptor (GHR) and insulin-like growth factor-1(IGF1) and its association with both the IGF1 expression in liver and its level in blood in Polish Holstein – Friesian cattle. *Neuroendocrinol Lett* 2008; 29(6): 981-989.
- Martojo, H. 2003. Indigenous Bali Cattle: The Best Suited Cattle Breed for Sustainable Small Farm in Indonesia. The Chinese Society of Animal Science. 112 Farm Road. Hsinhua. Tainan. Taiwan.
- Meadows, C. E. and Lush, J. L., 1957. Twinning in Dairy Cattle and its Relation to Production. *J. Dairy Sci.*, 40, 1430-1436.
- Mehmannavaz Y., C. Amirinia, M. Bonyadi and R.V. Torshizi. 2010. Association of IGF-1 gene polymorphism with milk production traits and paternal genetic trends in Iranian Holstein bulls. *African Journal of Microbiology Research* Vol. 4(1) pp. 110-114.

- Mikawa S, Yoshikawa G, Aoki H, Yamano Y, et al. (1995). Dynamic Aspects in the Expression of the Goat Insulin-like Growth Factor-I (IGF-I) Gene: Diversity in Transcription and Post-transcription. *Biosci. Biotechnol. Biochem.* 59: 87-92.
- Mirzaei A., Sharifiyazdi H., Ahmadi M.R., Ararooti T., 2012. Rowshan Ghasrodashti A., Kadivar A., 2012. The effect of polymorphism in gene of insulin-like growth factor-I on the serum periparturient concentration in Holstein dairy cows. ID No. B264 Revised on 2012-4-20.
- Moran. J.B., 1990. Performans dari Sapi-Sapi Pedaging di Indonesia dalam Kondisi Pengelolaan Tradisional dan Diperbaiki. Laporan Seminar Ruminansia II. Bogor: Pusat Penelitian dan Pengembangan Ternak.
- Morris, C. A., and A. M. Day. 1986. Ovulation Results from Cattle Herds with High twinning Frequency. *Proc. 3rd World Congress on Genetics Applied to Livestock Production*, pp. 96–100.
- Moyes T. E., 2004. Variation in Concentrations of INSULIN-like Growth Factor-1 (IGF-1) in Pasture-fed Holstein-Friesian Cows. Ph.D. thesis, University of Melbourne, Melbourne, Australia.
- Muladno, 2001. Dasar-Dasar Teknik DNA dan beberapa Aplikasinya. Balai Penelitian dan Pengembangan Zoologi, Pusat Penelitian dan Pengembangan Biologi LIPI, Bogor.
- Mullen M. P, Lynch C. O, Waters S. M, Howard D. J, O'Boyle P., Kenny D. A, Buckley F., Horan B., Diskin M. G., 2011. Single nucleotide polymorphisms in the growth hormone and insulin-like growth factor-1 genes are associated with milk production, body condition score and fertility traits in dairy cows. *Genet Mol Res* 2011; **10**: 1819-30.

- Mulliadi D dan Arifin J. 2010. Pendugaan Keseimbangan Populasi dan Heterozigositas Menggunakan Pola Protein Albumin Darah pada Populasi Domba Ekor Tipis (*Javanes Thin Tailed*) di Daerah Indramayu. *Jurnal Ilmu Ternak*. Vol. 10 No. 2, 65-72.
- Namikawa, T., Y Matsuda, K. Kondo, B. Pangestu, and H. Martojo. 1980. Blood Groups and Blood Protein Polymorphisms of Different Types of Cattle in Indonesia. In the Origin and Phylogeny of Indonesia Native Livestock 33-35. In The Research Group of Overseas Scientific Survey.
- Nei M. dan Kumar S. 2000. *Molecular Evolution and Phylogenetics*. Oxford University Press. USA.
- Ngadiyono N. 1997. Kinerja dan Prospek Sapi Bali di Indonesia. Seminar Environmental Pollution and Natural Product and Bali in Regional Denpasar, Bali.
- Nielen, M., Y. H. Schukken, D. T. Scholl, H. J. Wilbrink, and A. Brand. 1989. Twinning in Dairy Cattle: A Study of Risk Factors and Effects. *Theriogenology* 32:845.
- Obese, F.Y., 2003. Concentrations of Insulin-like Growth Factor-I (IGF-I) and Insulin-like Growth Factor Binding Protein-3 (IGFBP-3) in the Plasma and Milk of Pasture-fed Dairy Cows in Early Lactation. PhD thesis, School of Agriculture and Food Systems, University of Melbourne.
- Pane, I. 1990. Upaya Peningkatan Mutu Genetik Sapi Bali di P3 Bali. Prosiding Seminar Nasional Sapi Bali. Bali, 20-22 September 1990.
- Pastika, M. dan D. Darmadja. 1976. Performans Reproduksi Sapi Bali. Prosiding Seminar Reproduksi Sapi Bali. Denpasar, Bali: Universitas Udayana.

- Pierson R. A., J. P. Kastelic and O. J. Ghinter, 1988. Basic Principles and Techniques Transrectal Ultrasonography in Cattle and Horse. *Theriogenology* 9 : 1-19.
- Piper, L.R. and B.M. Bindon, 1996. The Booroola Merino. In: Fahmy, M.H. (ed.), *Prolific Sheep*, pp: 152–160. CAB International, Willingford, UK.
- Piper, L.R., B.M. Bindon and G.H. Davis, 1985. The Single Gene Inheritance of the High Litter Size of the Booroola Merino. In: Land, R.B. and D.W. Robinson (eds.), *Genetics of Reproduction in Sheep*, pp: 115–125. Butterworths, London
- Putu, I.G., P. Situmorang, A. Lubis, T.D. Chaniago, E. Triwulaningsih, T. Sugiarti, I.W. Mathius dan B. Sudaryanto. 1998. Pengaruh Pemberian Pakan Konsentrat Tambahan Selama Dua Bulan Sebelum dan Sesudah Kelahiran Terhadap Performan Produksi Dan Reproduksi Sapi Potong. *Prosiding Seminar Nasional Peternakan dan Veteriner. Bogor, 1-2 Desember 1998.*
- Rahim, L., 2005. Pengaruh Bangsa terhadap Berat Sapih dan pertambahan Bobot Badan Sapi pada Feedlot. *Buletin Ilmu Peternakan dan Perikanan, Volume IX (1) Januari 2005. Hal 41-46.*
- Rinderknecht, E. and R. E. Humbel, 1976. Polypeptides with Nonsuppressible Insulin-like and Cell-Growth-Promoting Activities in Human Serum: Isolation, Chemical Characterization, and some Biological Properties of Forms I and II. *Proc. Natl. Acad. Sci. USA* 73, 2365-2369.
- Rollinson, D.H.L., 1984. Bali Cattle. In: *Evolution of Domesticated Animals*. MASON, I.L. (Ed.). New York: Longman.
- Rose MT, 2002. The Somatotrophic Axis of the Dairy Cow Revisited. *Anim. Sci. J.* 73: 13-19.

- Rutledge, J. J. 1975. Twinning in Cattle. *J. Anim. Sci.* 40:803-815.
- Ryan, D. P., and M. P. Boland. 1991. Frequency of Twin Births Among Holstein- Friesian Cows in a Warm Dry Climate. *Theriogenology* 36:1.
- Salmon, W. D. Jr. and W. H. Daughaday, 1957. A Hormonally Controlled Serum Factor which Stimulates Sulfate Incorporation by Cartilage In Vitro. *J. Lab. Clin. Med.* 149, 825-836.
- Sambrook J. and Russell D. W., 1989. *Molecular Cloning. A Laboratory Manual.* Cold Spring Harbor Laboratory Press, New York.
- Schams, D., B. Berisha, M. Kosmann, R. Einspanier, and W. M. Amselgruber. 1999. Possible Role of Growth Hormone, IGFs, and IGF-binding Proteins in the Regulation of Ovarian Function in Large Farm Animals. *Domest Anim Endocrinol* 17(2-3):279-285.
- Sharma, B.K., VandeHaar, M.J., and Ames, N.K., 1994. Expression of Insulin-like Growth Factor-I in Cows at Different Stages of Lactation and in Late Lactation Cows Treated with Somatotropin. *J. Dairy Sci.*, 1994; 77: 2232-2241.
- Shimatsu A and Rotwein P, 1987. Mosaic Evolution of the Insulin-like Growth Factors. Organization, Sequence, and Expression of the Rat Insulin-like Growth Factor I Gene. *J. Biol. Chem.* 262: 7894-7900.
- Siadkowska E, Zwierzchowski L, Oprzadek J and Strzalkowska N., 2006. Effect of Polymorphism in IGF-1 Gene on Production Traits in Polish Holstein-Friesian Cattle. *Anim. Sci. Pap. Rep.* 3: 225-237.
- Silva del Rio, N., Colloton J.D., Fricke P.M., 2009. Factors Affecting Pregnancy Loss for Single and Twin Pregnancies in a High-Producing Dairy Herd. *Theriogenology*, 71, 1462–1471.

- Spicer LJ, Alpizar E, Echtenkamp SE. Effects of Insulin, Insulin-like Growth Factor I, and Gonadotropins on Bovine Granulosa Cell Proliferation, Progesterone Production, Estradiol Production, and (or) Insulin-like Growth Factor Production In Vitro. *J Anim Sci* 1993;71:1232-1241.
- Steward, C. E. H. and P. Rotwein, 1996. Growth, Differentiation, and Survival: Multiple Physiological Functions for the Insulin-like Growth Factors. *Physiol. Rev.* 76, 1005-1026.
- Stirling TE, Stockdale CR, Macmillan KL., 2008 Heritability of IGF-1 and its Genetic Correlation with Milk Yield in Holstein-Friesian Cows in Selected Victorian Herds. *Proceedings of the New Zealand Society of Animal Production*, Volume 68: 98-99.
- Sutikno, Yamin M dan Sumantri C, 2011. Association of Polimorphism Calpastatin Gen with Body Weight of Local Sheep in Jonggol, Indonesia. *Media Peternakan*, April 2011, hal. 1-6.
- Szewczuk M., S. Zych, E. Czerniawska-Piątkowska, and J. Wójcik. 2012. Association between IGF1R / i16 / TaqI and IGF1 / SnaBI polymorphisms and milk production traits in Polish Holstein-Friesian cows. *Animal Science Papers and Reports* vol. 30 (2012) no. 1, 13-24
- Tanari, M. 2001. Usaha Pengembangan Sapi Bali sebagai Ternak Lokal dalam Menunjang Pemenuhan Kebutuhan Protein asal Hewani di Indonesia. [http://rudyc2.250x.com/sem1\\_012/m\\_tanari.htm](http://rudyc2.250x.com/sem1_012/m_tanari.htm).
- Thraillkill K. M., 2000. Insulin-like Growth Factor-I in Diabetes Mellitus: its Physiology, Metabolic Effects and Potential Clinical Utility. *Diabetes Technol Ther* 2: 69–80.
- Toelihere, M. R., 1985. *Fisiologi Reproduksi pada Ternak*. Penerbit Angkasa, Bandung.

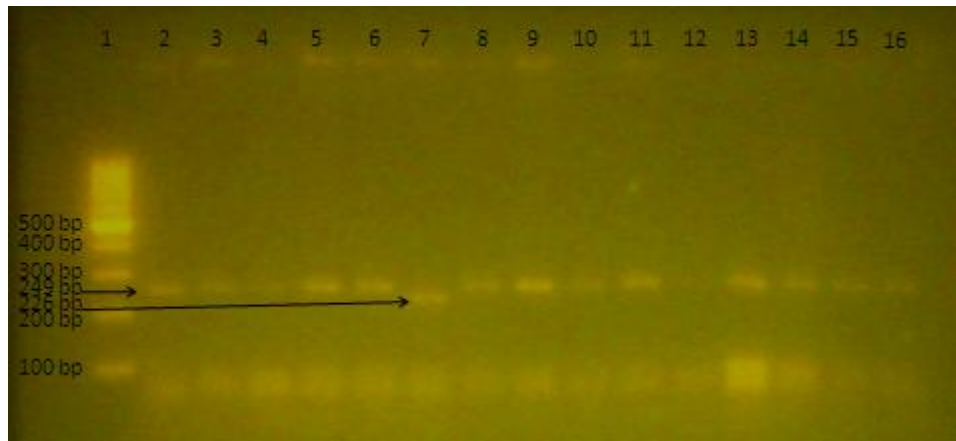
- Van Vleck L.D., Gregory K.E., 1996. Genetic trend and environmental effects in a population of cattle selected for twinning. *J. Anim. Sci.* 74: 522-528.
- Van Vleck L.D., Gregory K.E., Echtenkamp S.E., 1991. Ovulation rate and twinning rate in cattle: heritabilities and genetic correlation. *J. Anim. Sci.* 69: 3213-3219.
- Velazquez, M. A., L. J. Spicer and D. C. Wathes, 2008. The Role of Endocrine Insulin-like Growth Factor-I (IGF-I) in Female Bovine Reproduction. *Domest. Anim. Endocrinol.* 35, 325-342.
- Vincent, A. M. and E. L. Feldman, 2002, Kontrol of Cell Survival by IGF Signaling Pathways. *Growth Hormon. IGF Res.* 12, 193-197.
- Wang Y, Price SE and Jiang H, 2003. Cloning and Characterization of the Bovine Class 1 and Class 2 Insulin-like Growth Factor-I mRNAs. *Domest. Anim. Endocrinol.* 25: 315-328.
- Wiltbank M.C., Fricke P.M., Songsritavong S., Sartoi R., Ginther O.J., 2000. Mechanisms that Prevent and Produce Double Ovulations In Dairy Cattle. *J. Dairy Sci.* 83: 2998-3007.
- Yuwono T., 2006. Teori dan Aplikasi Polymerase Chain Reaction. CV. Andi Offset, Yogyakarta.
- Zhao J., Taverne M.A.M., Van Der Weijden G.C., Bevers M.M., Van Den Hurk R., 2001. Insuline-like Growth Factor 1 (IGF-1) Stimulates the Development of Cultured Rat Pre-antral Follicles. *Molecular Reproduction and Development* 58, 287-296.
- Zulu, V. C., T. Nakao and Y. Sawamukai, 2002. Insulin-like Growth Factor-1 as a Possible Mediator of Nutritional Regulation of Reproduction in Cattle. *J. Vet. Med. Sci.* 64, 657-665.

## LAMPIRAN-LAMPIRAN

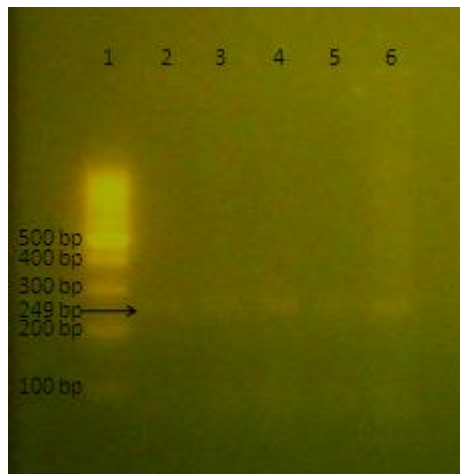


## Lampiran 1.

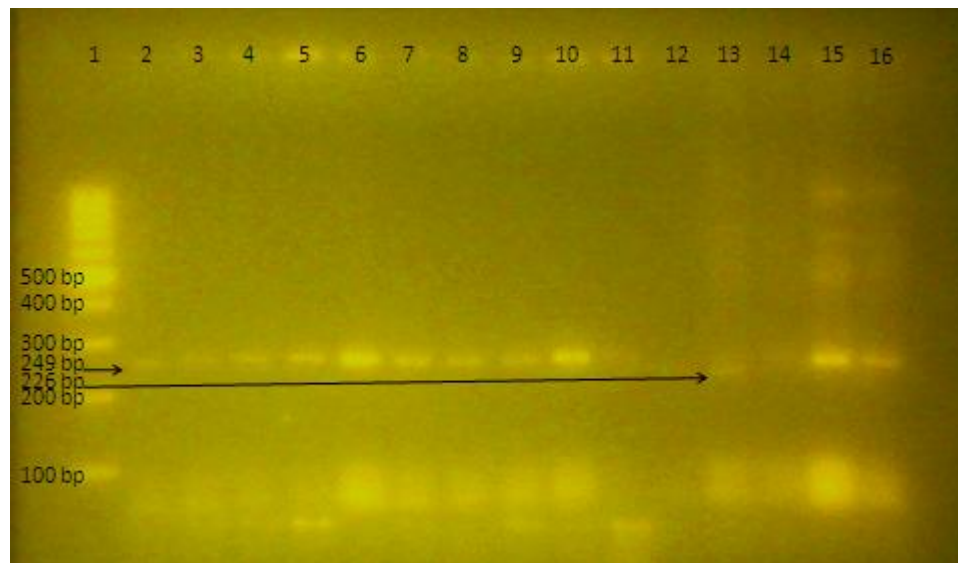
Hasil PCR-RFLP gen IGF-1 SnaB1 Sapi Bali dan Bali persilangan dengan riwayat kelahiran tunggal dan kembar.



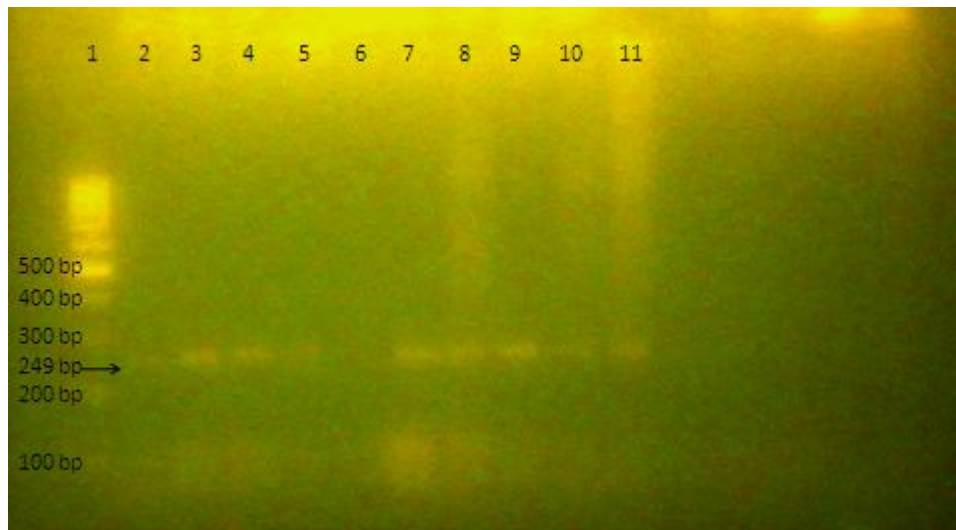
| No. | Kode Sampel | Panjang Pita                     | Genotip | Keterangan                    |
|-----|-------------|----------------------------------|---------|-------------------------------|
| 1   | Marker      | 100, 200, 300, 400, 500, 1000 bp |         |                               |
| 2   | XXXVIII     | 249, 249 bp                      | CC      | Anak Bali Tunggal             |
| 3   | XL          | 249, 249 bp                      | CC      | Anak Bali Tunggal             |
| 4   | XLII        | 249, 249 bp                      | CC      | Anak Bali Tunggal             |
| 5   | XLIII       | 249, 249 bp                      | CC      | Anak Bali Tunggal             |
| 6   | XLV         | 249, 249 bp                      | CC      | Anak Bali Tunggal             |
| 7   | XLVI        | 226, 226 bp                      | TT      | Anak Bali persilangan Tunggal |
| 8   | XLVII       | 249, 249 bp                      | CC      | Anak Bali Tunggal             |
| 9   | XLVIII      | 249, 249 bp                      | CC      | Anak Bali Tunggal             |
| 10  | XLIX        | 249, 249 bp                      | CC      | Anak Bali Tunggal             |
| 11  | L           | 249, 249 bp                      | CC      | Anak Bali Tunggal             |
| 12  | 1           | -                                | -       | Induk Bali Kembar             |
| 13  | 3           | 249, 249 bp                      | CC      | Induk Bali Kembar             |
| 14  | 4           | 249, 249 bp                      | CC      | Induk Bali Kembar             |
| 15  | 5           | 249, 249 bp                      | CC      | Induk Bali Kembar             |
| 16  | 24          | 249, 249 bp                      | CC      | Induk Bali persilangan Kembar |



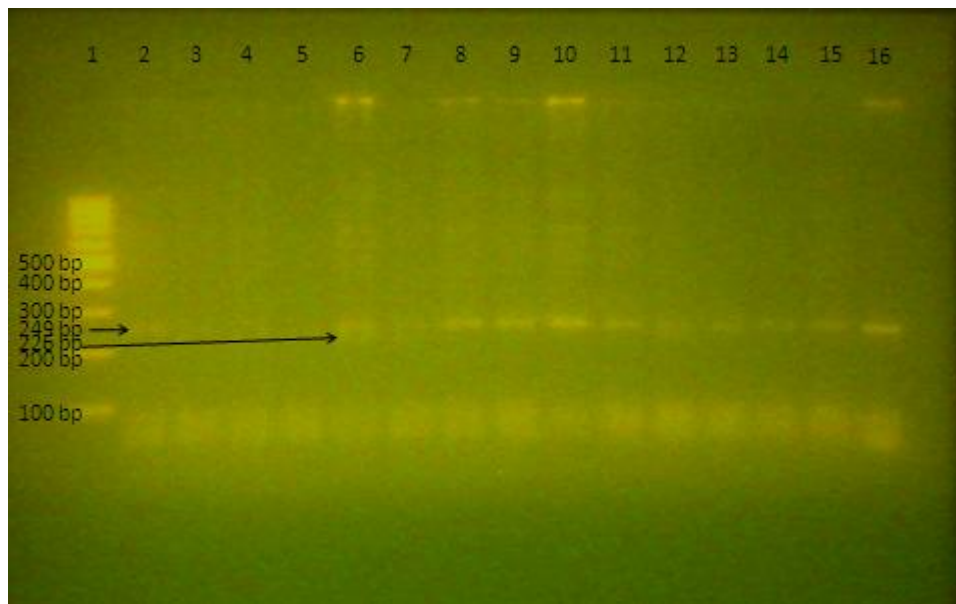
| No. | Kode Sampel | Panjang Pita                     | Genotip | Keterangan       |
|-----|-------------|----------------------------------|---------|------------------|
| 1   | Marker      | 100, 200, 300, 400, 500, 1000 bp |         |                  |
| 2   | 12          | 249, 249 bp                      | CC      | Anak Bali Kembar |
| 3   | 13          | 249, 226 bp                      | CT      | Anak Bali Kembar |
| 4   | 14          | 249, 249 bp                      | CC      | Anak Bali Kembar |
| 5   | 15          | 249, 226 bp                      | CT      | Anak Bali Kembar |
| 6   | 17          | 249, 226 bp                      | CT      | Anak Bali Kembar |



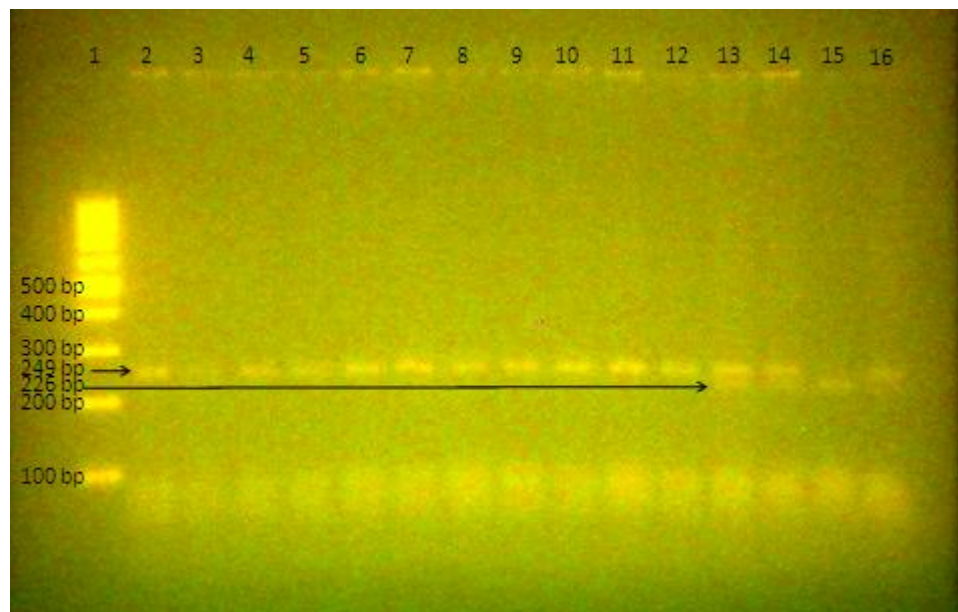
| No. | Kode Sampel | Panjang Pita                     | Genotip | Keterangan                    |
|-----|-------------|----------------------------------|---------|-------------------------------|
| 1   | Marker      | 100, 200, 300, 400, 500, 1000 bp |         |                               |
| 2   | 25          | 249, 249 bp                      | CC      | Induk Bali persilangan Kembar |
| 3   | 28          | 249, 249 bp                      | CC      | Induk Bali persilangan Kembar |
| 4   | 36          | 249, 249 bp                      | CC      | Anak Bali persilangan Kembar  |
| 5   | 37          | 249, 249 bp                      | CC      | Anak Bali Kembar              |
| 6   | 38          | 249, 249 bp                      | CC      | Anak Bali Kembar              |
| 7   | 39          | 249, 249 bp                      | CC      | Anak Bali persilangan Kembar  |
| 8   | 40          | 249, 249 bp                      | CC      | Anak Bali persilangan Kembar  |
| 9   | 41          | 249, 249 bp                      | CC      | Anak Bali persilangan Kembar  |
| 10  | 61          | 249, 249 bp                      | CC      | Induk Bali Kembar             |
| 11  | 62          |                                  |         | Induk Persilangan Kembar      |
| 12  | 63          |                                  |         | Anak Persilangan Kembar       |
| 13  | 64          | 249, 226 bp                      | CT      | Anak Persilangan Kembar       |
| 14  | 66          | 249, 226 bp                      | CT      | Anak Persilangan Kembar       |
| 15  | 68          | 249, 249 bp                      | CC      | Induk Bali Kembar             |
| 16  | 69          | 249, 249 bp                      | CC      | Induk Bali Kembar             |



| No. | Kode Sampel | Panjang Pita                     | Genotip | Keterangan                     |
|-----|-------------|----------------------------------|---------|--------------------------------|
| 1   | Marker      | 100, 200, 300, 400, 500, 1000 bp |         |                                |
| 2   | 72          | 249, 249 bp                      | CC      | Induk Bali Kembar              |
| 3   | 73          | 249, 249 bp                      | CC      | Induk Bali Kembar              |
| 4   | 74          | 249, 249 bp                      | CC      | Induk Bali Kembar              |
| 5   | 75          | 249, 226 bp                      | CT      | Induk Bali persilangan Kembar  |
| 6   | 11          |                                  |         | Anak Bali Kembar               |
| 7   | XVI         | 226, 226 bp                      | CC      | Induk Bali Tunggal             |
| 8   | XVII        | 249, 249 bp                      | CC      | Induk Bali persilangan Tunggal |
| 9   | XXIX        | 249, 249 bp                      | CC      | Anak Bali persilangan Tunggal  |
| 10  | XXXI        | 249, 249 bp                      | CC      | Anak Bali persilangan Tunggal  |
| 11  | XXXIV       | 249, 249 bp                      | CC      | Anak Bali persilangan Tunggal  |



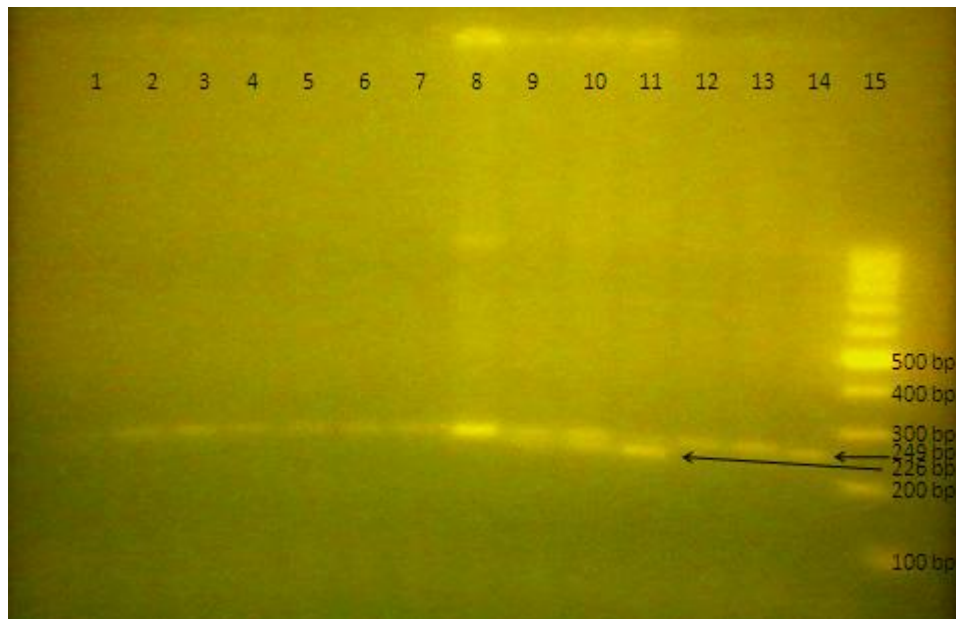
| No. | Kode Sampel | Panjang Pita                     | Genotip | Keterangan                    |
|-----|-------------|----------------------------------|---------|-------------------------------|
| 1   | Marker      | 100, 200, 300, 400, 500, 1000 bp |         |                               |
| 2   | 1           | 249, 249 bp                      | CC      | Induk Bali Kembar             |
| 3   | 62          | 249, 226 bp                      | CT      | Induk Bali persilangan Kembar |
| 4   | 63          | 249, 226 bp                      | CT      | Anak Bali persilangan Kembar  |
| 5   | 64          | 249, 226 bp                      | CT      | Anak Bali persilangan Kembar  |
| 6   | 65          | 249, 226 bp                      | CT      | Anak Bali persilangan Kembar  |
| 7   | 66          | 249, 226 bp                      | CT      | Anak Bali persilangan Kembar  |
| 8   | 67          | 249, 249 bp                      | CC      | Induk Bali Kembar             |
| 9   | 70          | 249, 249 bp                      | CC      | Induk Bali Kembar             |
| 10  | 71          | 249, 249 bp                      | CC      | Anak Bali Kembar              |
| 11  | 72          | 249, 249 bp                      | CC      | Induk Bali Kembar             |
| 12  | 75          | 249, 226 bp                      | CT      | Induk Bali persilangan Kembar |
| 13  | I           | 249, 249 bp                      | CC      | Induk Bali Tunggal            |
| 14  | 11          | 249, 249 bp                      | CC      | Anak Bali Kembar              |
| 15  | XX          | 249, 249 bp                      | CC      | Anak Bali persilangan Tunggal |
| 16  | ND          | 249 bp                           | -       | Non Digestion                 |



| No. | Kode Sampel | Panjang Pita                     | Genotip | Keterangan                     |
|-----|-------------|----------------------------------|---------|--------------------------------|
| 1   | Marker      | 100, 200, 300, 400, 500, 1000 bp |         |                                |
| 2   | XXI         | 249, 249 bp                      | CC      | Anak Bali Tunggal              |
| 3   | XXII        | 249, 226 bp                      | CT      | Anak Bali persilangan Tunggal  |
| 4   | XXIII       | 249, 249 bp                      | CC      | Induk Bali persilangan Tunggal |
| 5   | XXIV        | 249, 249 bp                      | CC      | Anak Bali Tunggal              |
| 6   | XXV         | 249, 249 bp                      | CC      | Induk Bali Tunggal             |
| 7   | XXVII       | 249, 249 bp                      | CC      | Induk Bali Tunggal             |
| 8   | XXVIII      | 249, 249 bp                      | CC      | Induk Bali persilangan Tunggal |
| 9   | XXX         | 249, 249 bp                      | CC      | Anak Bali persilangan Tunggal  |
| 10  | XXXI        | 249, 249 bp                      | CC      | Anak Bali persilangan Tunggal  |
| 11  | XXXII       | 249, 249 bp                      | CC      | Induk Bali persilangan Tunggal |
| 12  | XXXIV       | 249, 249 bp                      | CC      | Anak Bali persilangan Tunggal  |
| 13  | XXXV        | 249, 226 bp                      | CT      | Induk Bali persilangan Tunggal |
| 14  | XXXVII      | 249, 226 bp                      | CT      | Anak Bali persilangan Tunggal  |
| 15  | XLVI        | 226, 226 bp                      | TT      | Anak Bali persilangan Tunggal  |
| 16  | ND          | 249 bp                           |         | Non Digestion                  |

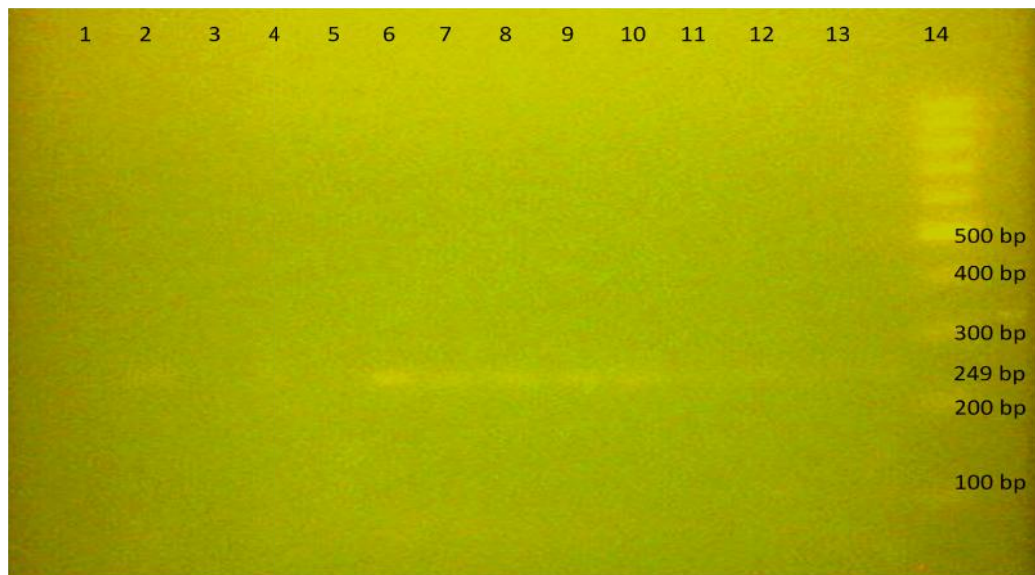


| No. | Kode Sampel | Panjang Pita                     | Genotip | Keterangan                    |
|-----|-------------|----------------------------------|---------|-------------------------------|
| 1   | XXII        | 249, 226 bp                      | CT      | Anak Bali persilangan Tunggal |
| 2   | 11          | 249, 249 bp                      | CC      | Anak Bali Kembar              |
| 3   | I           | 249, 249 bp                      | CC      | Induk Bali Tunggal            |
| 4   | 75          | 249, 226 bp                      | CT      | Induk Bali persilangan Kembar |
| 5   | 65          | 249, 226 bp                      | CT      | Anak Bali persilangan Kembar  |
| 6   | 64          | 249, 226 bp                      | CT      | Anak Bali persilangan Kembar  |
| 7   | 63          | 249, 226 bp                      | CT      | Anak Bali persilangan Kembar  |
| 8   | 62          | 249, 226 bp                      | CT      | Induk Bali persilangan Kembar |
| 9   | 1           | 249, 249 bp                      | CC      | Induk Bali Kembar             |
| 10  | Marker      | 100, 200, 300, 400, 500, 1000 bp |         |                               |



| No. | Kode Sampel | Panjang Pita                     | Genotip | Keterangan                    |
|-----|-------------|----------------------------------|---------|-------------------------------|
| 1   | 10          | 249, 249 bp                      | CC      | Induk Bali Kembar             |
| 2   | 12          | 249, 249 bp                      | CC      | Anak Bali Kembar              |
| 3   | 14          | 249, 249 bp                      | CC      | Anak Bali Kembar              |
| 4   | 63          | 249, 249 bp                      | CC      | Anak Bali persilangan Kembar  |
| 5   | 75          | 249, 249 bp                      | CC      | Induk Bali persilangan Kembar |
| 6   | XXII        | 249, 249 bp                      | CC      | Anak Bali persilangan Tunggal |
| 7   | XXXVIII     | 249, 249 bp                      | CC      | Anak Bali Tunggal             |
| 8   | 7           | 249, 249 bp                      | CC      | Induk Bali Kembar             |
| 9   | 13          | 249, 226 bp                      | CT      | Anak Bali Kembar              |
| 10  | 15          | 249, 226 bp                      | CT      | Anak Bali Kembar              |
| 11  | 17          | 249, 226 bp                      | CT      | Anak Bali Kembar              |
| 12  | 25          | 249, 249 bp                      | CC      | Induk Bali persilangan Kembar |
| 13  | 28          | 249, 249 bp                      | CC      | Induk Bali persilangan Kembar |
| 14  | 62          | 249, 226 bp                      | CT      | Induk Bali persilangan Kembar |
| 15  | Marker      | 100, 200, 300, 400, 500, 1000 bp |         |                               |





| No. | Kode Sampel | Panjang Pita                           | Genotip | Keterangan         |
|-----|-------------|--|---------|--------------------|
| 1   | ND          |  |         | Non Digestion      |
| 2   | LI          | 249, 249 bp                            | CC      | Induk Bali Tunggal |
| 3   | LII         | 249, 249 bp                            | CC      | Induk Bali Tunggal |
| 4   | LIII        | 249, 249 bp                            | CC      | Induk Bali Tunggal |
| 5   | LIV         | 249, 249 bp                            | CC      | Induk Bali Tunggal |
| 6   | LV          | 249, 249 bp                            | CC      | Induk Bali Tunggal |
| 7   | LVI         | 249, 249 bp                            | CC      | Induk Bali Tunggal |
| 8   | LVII        | 249, 249 bp                            | CC      | Induk Bali Tunggal |
| 9   | LVIII       | 249, 249 bp                            | CC      | Induk Bali Tunggal |
| 10  | B001        | 249, 249 bp                            | CC      | Induk Bali Tunggal |
| 11  | B002        | 249, 249 bp                            | CC      | Induk Bali Tunggal |
| 12  | AK1         | 249, 249 bp                            | CC      | Anak Bali Kembar   |
| 13  | AK2         | 249, 249 bp                            | CC      | Anak Bali Kemar    |
| 14  | Marker      | 100, 200, 300,<br>400, 500, 1000<br>bp |         |                    |

## Lampiran 2

## Genotip Sapi Bali dan Bali persilangan dengan Riwayat Kelahiran Kembar dan Tunggal

| No. Sampel | Jenis Sapi                     | Genotip | No. Sampel | Jenis Sapi                      | Genotip |
|------------|--------------------------------|---------|------------|---------------------------------|---------|
| 1          | Induk Bali Kembar              | CC      | I          | Induk Bali Tunggal              | CC      |
| 3          | Induk Bali Kembar              | CC      | XVI        | Induk Bali Tunggal              | CC      |
| 4          | Induk Bali Kembar              | CC      | XXV        | Induk Bali Tunggal              | CC      |
| 5          | Induk Bali Kembar              | CC      | XXVII      | Induk Bali Tunggal              | CC      |
| 7          | Induk Bali Kembar              | CC      | LI         | Induk Bali Tunggal              | CC      |
| 10         | Induk Bali Kembar              | CC      | LII        | Induk Bali Tunggal              | CC      |
| 61         | Induk Bali Kembar              | CC      | LIII       | Induk Bali Tunggal              | CC      |
| 67         | Induk Bali Kembar              | CC      | LIV        | Induk Bali Tunggal              | CC      |
| 68         | Induk Bali Kembar              | CC      | LV         | Induk Bali Tunggal              | CC      |
| 69         | Induk Bali Kembar              | CC      | LVI        | Induk Bali Tunggal              | CC      |
| 70         | Induk Bali Kembar              | CC      | LVII       | Induk Bali Tunggal              | CC      |
| 72         | Induk Bali Kembar              | CC      | LVIII      | Induk Bali Tunggal              | CC      |
| 73         | Induk Bali Kembar              | CC      | B001       | Induk Bali Tunggal              | CC      |
| 74         | Induk Bali Kembar              | CC      | B002       | Induk Bali Tunggal              | CC      |
| Jumlah     |                                | 14      |            |                                 | 14      |
| 24         | Induk Bali <i>cross</i> Kembar | CC      | XVII       | Induk Bali <i>cross</i> Tunggal | CC      |
| 25         | Induk Bali <i>cross</i> Kembar | CC      | XXIII      | Induk Bali <i>cross</i> Tunggal | CC      |
| 28         | Induk Bali <i>cross</i> Kembar | CC      | XXVIII     | Induk Bali <i>cross</i> Tunggal | CC      |
| 62         | Induk Bali <i>cross</i> Kembar | CT      | XXXII      | Induk Bali <i>cross</i> Tunggal | CC      |
| 75         | Induk Bali <i>cross</i> Kembar | CT      | XXXV       | Induk Bali <i>cross</i> Tunggal | CT      |
| Jumlah     |                                | 5       |            |                                 | 5       |
| 11         | Anak Bali Kembar               | CC      | XXI        | Anak Bali Tunggal               | CC      |
| 12         | Anak Bali Kembar               | CC      | XXVI       | Anak Bali Tunggal               | CC      |
| 13         | Anak Bali Kembar               | CT      | XXXIII     | Anak Bali Tunggal               | CC      |
| 14         | Anak Bali Kembar               | CC      | XXXVIII    | Anak Bali Tunggal               | CC      |
| 15         | Anak Bali Kembar               | CT      | XL         | Anak Bali Tunggal               | CC      |
| 17         | Anak Bali Kembar               | CT      | XLII       | Anak Bali Tunggal               | CC      |
| 37         | Anak Bali Kembar               | CC      | XLIII      | Anak Bali Tunggal               | CC      |
| 38         | Anak Bali Kembar               | CC      | XLV        | Anak Bali Tunggal               | CC      |
| 71         | Anak Bali Kembar               | CC      | XLVII      | Anak Bali Tunggal               | CC      |
|            |                                |         | XLVIII     | Anak Bali Tunggal               | CC      |
|            |                                |         | XLIX       | Anak Bali Tunggal               | CC      |
|            |                                |         | L          | Anak Bali Tunggal               | CC      |
| Jumlah     |                                | 9       |            |                                 | 12      |

|        |                               |    |        |                                |    |
|--------|-------------------------------|----|--------|--------------------------------|----|
| 36     | Anak Bali <i>cross</i> Kembar | CC | XX     | Anak Bali <i>cross</i> Tunggal | CC |
| 39     | Anak Bali <i>cross</i> Kembar | CC | XXII   | Anak Bali <i>cross</i> Tunggal | CT |
| 40     | Anak Bali <i>cross</i> Kembar | CC | XXIV   | Anak Bali <i>cross</i> Tunggal | CC |
| 41     | Anak Bali <i>cross</i> Kembar | CC | XXIX   | Anak Bali <i>cross</i> Tunggal | CC |
| 63     | Anak Bali <i>cross</i> Kembar | CT | XXX    | Anak Bali <i>cross</i> Tunggal | CC |
| 64     | Anak Bali <i>cross</i> Kembar | CT | XXXI   | Anak Bali <i>cross</i> Tunggal | CC |
| 65     | Anak Bali <i>cross</i> Kembar | CT | XXXIV  | Anak Bali <i>cross</i> Tunggal | CC |
| 66     | Anak Bali <i>cross</i> Kembar | CT | XXXVII | Anak Bali <i>cross</i> Tunggal | CT |
|        |                               |    | XLI    | Anak Bali <i>cross</i> Tunggal | TT |
|        |                               |    | XLVI   | Anak Bali <i>cross</i> Tunggal | TT |
| Jumlah |                               | 8  |        |                                | 10 |

Lampiran 3

Analisa Data

Rekapitulasi Data Genotip Sapi Bali & Bali persilangan dengan Riwayat Kembar

| No | Jenis Sapi                | Genotipe |    |    |        |
|----|---------------------------|----------|----|----|--------|
|    |                           | CC       | CT | TT | Jumlah |
| 1  | Induk Bali Kembar         | 14       | 0  | 0  | 14     |
| 2  | Induk Bali Tunggal        | 14       | 0  | 0  | 14     |
| 3  | Induk Persilangan Kembar  | 3        | 2  | 0  | 5      |
| 4  | Induk Persilangan Tunggal | 4        | 1  | 0  | 5      |
| 5  | Anak Bali Kembar          | 6        | 3  | 0  | 9      |
| 6  | Anak Bali Tunggal         | 12       | 0  | 0  | 12     |
| 7  | Anak Persilangan Kembar   | 4        | 4  | 0  | 8      |
| 8  | Anak Persilangan Tunggal  | 6        | 2  | 2  | 10     |
|    | Total Populasi            | 63       | 12 | 2  | 77     |

Frekuensi Alel, Genotip dan Heterosigositas Sapi Bali & Bali persilangan dengan Riwayat kelahiran Kembar dan Tunggal

| No | Jenis Sapi                | Frekuensi Alel |      | Frekuensi Genotip |      |      | Heterozigositas (He) |
|----|---------------------------|----------------|------|-------------------|------|------|----------------------|
|    |                           | C              | T    | CC                | CT   | TT   |                      |
| 1  | Induk Bali Kembar         | 1,00           | 0,00 | 1,00              | 0,00 | 0,00 | 0,00                 |
| 2  | Induk Bali Tunggal        | 1,00           | 0,00 | 1,00              | 0,00 | 0,00 | 0,00                 |
| 3  | Induk Persilangan Kembar  | 0,80           | 0,20 | 0,64              | 0,32 | 0,04 | 0,32                 |
| 4  | Induk Persilangan Tunggal | 0,90           | 0,10 | 0,81              | 0,18 | 0,01 | 0,18                 |
| 5  | Anak Bali Kembar          | 0,83           | 0,17 | 0,69              | 0,28 | 0,03 | 0,28                 |
| 6  | Anak Bali Tunggal         | 1,00           | 0,00 | 1,00              | 0,00 | 0,00 | 0,00                 |
| 7  | Anak Persilangan Kembar   | 0,75           | 0,25 | 0,56              | 0,38 | 0,06 | 0,38                 |
| 8  | Anak Persilangan Tunggal  | 0,70           | 0,30 | 0,49              | 0,42 | 0,09 | 0,42                 |
|    | Total Populasi            | 0,90           | 0,10 | 0,80              | 0,19 | 0,01 | 0,19                 |

## Lampiran 4.

Genotip Pengamatan, Genotip Harapan dan Keseimbangan *Hardy-Weinberg* pada Sapi Bali & Bali persilangan Dengan Riwayat Kelahiran Kembar dan Tunggal

| No | Jenis Sapi                | Genotipe Pengamatan |    |    | Jumlah | Genotipe Harapan |       |      | Jumlah | X <sup>2</sup> |
|----|---------------------------|---------------------|----|----|--------|------------------|-------|------|--------|----------------|
|    |                           | CC                  | CT | TT |        | CC               | CT    | TT   |        |                |
| 1  | Induk Bali Kembar         | 14                  | 0  | 0  | 14     | 14,00            | 0,00  | 0,00 | 14,00  |                |
| 2  | Induk Bali Tunggal        | 14                  | 0  | 0  | 14     | 14,00            | 0,00  | 0,00 | 14,00  |                |
| 3  | Induk Persilangan Kembar  | 3                   | 2  | 0  | 5      | 3,20             | 1,60  | 0,20 | 5,00   | 0,313          |
| 4  | Induk Persilangan Tunggal | 4                   | 1  | 0  | 5      | 4,05             | 0,90  | 0,05 | 5,00   | 0,062          |
| 5  | Anak Bali Kembar          | 6                   | 3  | 0  | 9      | 6,25             | 2,50  | 0,25 | 9,00   | 0,360          |
| 6  | Anak Bali Tunggal         | 12                  | 0  | 0  | 12     | 12,00            | 0,00  | 0,00 | 12,00  |                |
| 7  | Anak Persilangan Kembar   | 4                   | 4  | 0  | 8      | 4,50             | 3,00  | 0,50 | 8,00   | 0,889          |
| 8  | Anak Persilangan Tunggal  | 6                   | 2  | 2  | 10     | 4,90             | 4,20  | 0,90 | 10,00  | 2,744          |
|    | Total Populasi            | 63                  | 12 | 2  | 77     | 61,83            | 14,34 | 0,83 | 77,00  | 2,047          |

Lampiran 5.

Analisa hubungan genotip gen IGF-1 SnaB1 dengan riwayat kelahiran tunggal dan kembar pada sapi Bali dan Bali persilangan

```
CROSSTABS /TABLES=Induk_Bali BY GIB /FORMAT=AVALUE TABLES
/STATISTICS=CHISQ CORR /CELLS=COUNT EXPECTED /COUNT ROUND CELL.
```

## Crosstabs

[DataSet0]

### Warnings

No measures of association are computed for the crosstabulation of Induk\_Bali \* GIB. At least one variable in each 2-way table upon which measures of association are computed is a constant.

### Case Processing Summary

|                  | Cases |         |         |         |       |         |
|------------------|-------|---------|---------|---------|-------|---------|
|                  | Valid |         | Missing |         | Total |         |
|                  | N     | Percent | N       | Percent | N     | Percent |
| Induk_Bali * GIB | 28    | 100.0%  | 0       | .0%     | 28    | 100.0%  |

### Induk\_Bali \* GIB Crosstabulation

|            |                    |                | GIB  | Total |
|------------|--------------------|----------------|------|-------|
|            |                    |                | CC   |       |
| Induk_Bali | Induk Bali Kembar  | Count          | 14   | 14    |
|            |                    | Expected Count | 14.0 | 14.0  |
|            | Induk Bali Tunggal | Count          | 14   | 14    |
|            |                    | Expected Count | 14.0 | 14.0  |
| Total      |                    | Count          | 28   | 28    |
|            |                    | Expected Count | 28.0 | 28.0  |

### Chi-Square Tests

|                    | Value          |
|--------------------|----------------|
| Pearson Chi-Square | . <sup>a</sup> |
| N of Valid Cases   | 28             |

a. No statistics are computed because GIB is a constant.

CROSSTABS /TABLES=Induk\_Bali\_cross BY GIBX /FORMAT=AVALUE TABLES  
/STATISTICS=CHISQ CORR /CELLS=COUNT EXPECTED /COUNT ROUND CELL.

## Crosstabs

[DataSet0]

### Case Processing Summary

|                         | Cases |         |         |         |       |         |
|-------------------------|-------|---------|---------|---------|-------|---------|
|                         | Valid |         | Missing |         | Total |         |
|                         | N     | Percent | N       | Percent | N     | Percent |
| Induk_Bali_cross * GIBX | 10    | 35.7%   | 18      | 64.3%   | 28    | 100.0%  |

### Induk\_Bali\_cross \* GIBX Crosstabulation

|                  |                          |                | GIBX |     | Total |
|------------------|--------------------------|----------------|------|-----|-------|
|                  |                          |                | CC   | CT  |       |
| Induk_Bali_cross | Induk Bali cross Kembar  | Count          | 3    | 2   | 5     |
|                  |                          | Expected Count | 3.5  | 1.5 | 5.0   |
|                  | Induk Bali cross Tunggal | Count          | 4    | 1   | 5     |
|                  |                          | Expected Count | 3.5  | 1.5 | 5.0   |
| Total            |                          | Count          | 7    | 3   | 10    |
|                  |                          | Expected Count | 7.0  | 3.0 | 10.0  |

### Chi-Square Tests

|                                    | Value             | df | Asymp. Sig. (2-sided) | Exact Sig. (2-sided) | Exact Sig. (1-sided) |
|------------------------------------|-------------------|----|-----------------------|----------------------|----------------------|
| Pearson Chi-Square                 | .476 <sup>a</sup> | 1  | .490                  |                      |                      |
| Continuity Correction <sup>b</sup> | .000              | 1  | 1.000                 |                      |                      |
| Likelihood Ratio                   | .483              | 1  | .487                  |                      |                      |
| Fisher's Exact Test                |                   |    |                       | 1.000                | .500                 |
| Linear-by-Linear Association       | .429              | 1  | .513                  |                      |                      |
| N of Valid Cases                   | 10                |    |                       |                      |                      |

a. 4 cells (100,0%) have expected count less than 5. The minimum expected count is 1,50.

**Chi-Square Tests**

|                                    | Value             | df | Asymp. Sig. (2-sided) | Exact Sig. (2-sided) | Exact Sig. (1-sided) |
|------------------------------------|-------------------|----|-----------------------|----------------------|----------------------|
| Pearson Chi-Square                 | .476 <sup>a</sup> | 1  | .490                  |                      |                      |
| Continuity Correction <sup>b</sup> | .000              | 1  | 1.000                 |                      |                      |
| Likelihood Ratio                   | .483              | 1  | .487                  |                      |                      |
| Fisher's Exact Test                |                   |    |                       | 1.000                | .500                 |
| Linear-by-Linear Association       | .429              | 1  | .513                  |                      |                      |
| N of Valid Cases                   | 10                |    |                       |                      |                      |

a. 4 cells (100,0%) have expected count less than 5. The minimum expected count is 1,50.

b. Computed only for a 2x2 table

**Symmetric Measures**

|  | Value | Asymp. Std. Error <sup>a</sup> | Approx. T <sup>b</sup> | Approx. Sig.      |
|--|-------|--------------------------------|------------------------|-------------------|
| Interval by Interval      Pearson's R        | -.218 | .304                           | -.632                  | .545 <sup>c</sup> |
| Ordinal by Ordinal      Spearman Correlation | -.218 | .304                           | -.632                  | .545 <sup>c</sup> |
| N of Valid Cases                             | 10    |                                |                        |                   |

a. Not assuming the null hypothesis.

b. Using the asymptotic standard error assuming the null hypothesis.

c. Based on normal approximation.



CROSSTABS /TABLES=Anak\_Bali BY GAB /FORMAT=AVALUE TABLES  
/STATISTICS=CHISQ CORR /CELLS=COUNT EXPECTED /COUNT ROUND CELL.

## Crosstabs

[DataSet0]

### Case Processing Summary

|                 | Cases |         |         |         |       |         |
|-----------------|-------|---------|---------|---------|-------|---------|
|                 | Valid |         | Missing |         | Total |         |
|                 | N     | Percent | N       | Percent | N     | Percent |
| Anak_Bali * GAB | 21    | 75.0%   | 7       | 25.0%   | 28    | 100.0%  |

### Anak\_Bali \* GAB Crosstabulation

|           |                   |                | GAB  |     | Total |
|-----------|-------------------|----------------|------|-----|-------|
|           |                   |                | CC   | CT  |       |
| Anak_Bali | Anak Bali Kembar  | Count          | 6    | 3   | 9     |
|           |                   | Expected Count | 7.7  | 1.3 | 9.0   |
|           | Anak Bali Tunggal | Count          | 12   | 0   | 12    |
|           |                   | Expected Count | 10.3 | 1.7 | 12.0  |
| Total     |                   | Count          | 18   | 3   | 21    |
|           |                   | Expected Count | 18.0 | 3.0 | 21.0  |

### Chi-Square Tests

|                                    | Value              | df | Asymp. Sig. (2-sided) | Exact Sig. (2-sided) | Exact Sig. (1-sided) |
|------------------------------------|--------------------|----|-----------------------|----------------------|----------------------|
| Pearson Chi-Square                 | 4.667 <sup>a</sup> | 1  | .031                  |                      |                      |
| Continuity Correction <sup>b</sup> | 2.341              | 1  | .126                  |                      |                      |
| Likelihood Ratio                   | 5.768              | 1  | .016                  |                      |                      |
| Fisher's Exact Test                |                    |    |                       | .063                 | .063                 |
| Linear-by-Linear Association       | 4.444              | 1  | .035                  |                      |                      |
| N of Valid Cases                   | 21                 |    |                       |                      |                      |

a. 2 cells (50,0%) have expected count less than 5. The minimum expected count is 1,29.

b. Computed only for a 2x2 table

## Symmetric Measures

|                      |                      | Value | Asymp. Std. Error <sup>a</sup> | Approx. T <sup>b</sup> | Approx. Sig.      |
|----------------------|----------------------|-------|--------------------------------|------------------------|-------------------|
| Interval by Interval | Pearson's R          | -.471 | .134                           | -2.330                 | .031 <sup>c</sup> |
| Ordinal by Ordinal   | Spearman Correlation | -.471 | .134                           | -2.330                 | .031 <sup>c</sup> |
| N of Valid Cases     |                      | 21    |                                |                        |                   |

a. Not assuming the null hypothesis.

b. Using the asymptotic standard error assuming the null hypothesis.

c. Based on normal approximation.

```
CROSSTABS /TABLES=Anak_Bali_cross BY GABX /FORMAT=AVALUE TABLES
/STATISTICS=CHISQ CORR /CELLS=COUNT EXPECTED /COUNT ROUND CELL.
```

## Crosstabs

[DataSet0]

### Case Processing Summary

|                        | Cases |         |         |         |       |         |
|------------------------|-------|---------|---------|---------|-------|---------|
|                        | Valid |         | Missing |         | Total |         |
|                        | N     | Percent | N       | Percent | N     | Percent |
| Anak_Bali_cross * GABX | 18    | 64.3%   | 10      | 35.7%   | 28    | 100.0%  |

### Anak\_Bali\_cross \* GABX Crosstabulation

|                 |                         |                | GABX |     |     | Total |
|-----------------|-------------------------|----------------|------|-----|-----|-------|
|                 |                         |                | CC   | CT  | TT  |       |
| Anak_Bali_cross | Anak Bali cross Kembar  | Count          | 4    | 4   | 0   | 8     |
|                 |                         | Expected Count | 4.4  | 2.7 | .9  | 8.0   |
|                 | Anak Bali cross Tunggal | Count          | 6    | 2   | 2   | 10    |
|                 |                         | Expected Count | 5.6  | 3.3 | 1.1 | 10.0  |
| Total           |                         | Count          | 10   | 6   | 2   | 18    |
|                 |                         | Expected Count | 10.0 | 6.0 | 2.0 | 18.0  |

### Chi-Square Tests

|                              | Value              | df | Asymp. Sig. (2-sided) |
|------------------------------|--------------------|----|-----------------------|
| Pearson Chi-Square           | 2.880 <sup>a</sup> | 2  | .237                  |
| Likelihood Ratio             | 3.632              | 2  | .163                  |
| Linear-by-Linear Association | .089               | 1  | .765                  |
| N of Valid Cases             | 18                 |    |                       |

a. 5 cells (83,3%) have expected count less than 5. The minimum expected count is ,89.

### Symmetric Measures

|  | Value | Asymp. Std. Error <sup>a</sup> | Approx. T <sup>b</sup> | Approx. Sig.       |
|--|-------|--------------------------------|------------------------|--------------------|
| Interval by Interval    Pearson's R        | .073  | .217                           | .291                   | .775 <sup>c</sup>  |
| Ordinal by Ordinal    Spearman Correlation | .000  | .237                           | .000                   | 1.000 <sup>c</sup> |
| N of Valid Cases                           | 18    |                                |                        |                    |

a. Not assuming the null hypothesis.

b. Using the asymptotic standard error assuming the null hypothesis.

c. Based on normal approximation.