

DAFTAR PUSTAKA

1. Suyono, S. dkk, *Penatalaksanaan Diabetes Melitus Terpadu*, Ed.2. Cet.8. Fakultas Kedokteran Universitas Indonesia. Jakarta. 2011. hal: 9
2. Sudoyo A. W, Setiyohadi B, Alwi I, Simadibrata K.M, Setiati S. *Buku Ajar Ilmu Penyakit Dalam*, Ed.V. Jilid II. Interna Publishing Pusat Penerbitan Ilmu Penyakit Dalam. Jakarta. 2009. hal 1334-1335
3. Suhartono. *Hiperkoagulasi Pada Penderita Ulkus Kaki Diabetika*, Penelitian Potong Lintang Di Departemen / SMF Ilmu Penyakit Dalam Fakultas Kedokteran Universitas Sumatera Utara RSUP H. Adam Malik / RSUD. Dr. Pirngadi, Medan. 2009. Diakses 8 Desember 2012.
4. Sacher R.A, McPherson R.A. *Tinjauan Klinis Hasil Pemeriksaan Laboratorium*. Ed.11. Terjemahan oleh Pendit Brahm U & Wulandari Dewi. Buku Kedokteran EGC. Jakarta. 2004. hal: 153,163
5. Rey I. *Pengaruh Pemberian Lumbrokinase Selama 7 Hari Terhadap Status Hiperkoagulasi Penderita Ulkus Kaki Diabetik*, Bagian / SMF Ilmu Penyakit Dalam Fakultas Kedokteran USU / RS H Adam Malik Medan. 2009. Diakses 8 Desember 2012.
6. Bakta I. M, *Hematologi Klinik Ringkas*. Penerbit Buku Kedokteran EGC. 2006. hal 256
7. Setiabudy R. D, *Hemostasis dan Trombosis*, Ed.V. Badan Penerbit Fakultas Kedokteran Indonesia. 2012. hal 28-48
8. Astiawanti P, *Perbedaan Pola Gangguan Hemostasis Antara Penyakit Ginjal Kronik Prehemodialisis dengan Diabetes Melitus dan Non Diabetes Melitus*, Universitas Diponegoro. Semarang. 2008. hal: 15, 17, 34-35. Diakses 8 Desember 2012.
9. Arief M, *Worshop Flebotomi / PDS Patologi Klinik*. Jakarta. 2008. hal: 35-37.
10. Hardjoeno H, dkk, *Interpretasi Hasil Tes Laboratorium Diagnostik Bagian dari Standar Pelayanan Medik*, Penerbit Hasanuddin University Press (Lephas), Makassar, 2006. Hal 99-128
11. Sudoyo A. W, dkk. *Buku Ajar Ilmu Penyakit Dalam*, Ed.III. Jilid II. Balai Penerbit FKUI. Jakarta. 2001. hal 457-588

12. Ramadhani I. *Hubungan Keterkendalian Gula Darah Dengan Gangguan Hemostasis Pada Pasien DM Tipe 2*, Program Magister Klinik-Spesialis Ilmu Penyakit Dalam Fakultas Kedokteran Universitas Sumatera Utara, Medan. 2010. Diakses 8 Desember 2012.
13. Farahita T, Trisnawati Y, Lubis M, *Gangguan Koagulasi Pada Sepsis*, Volume 13, Departemen Ilmu Kesehatan Anak Fakultas Kedokteran Universitas Sumatra Utara Sari Pediatri, Medan, Hal: 226-232. Diakses 8 Desember 2012.
14. Jansson P, *Endothelial Dysfunction in Insulin Resistance and Type 2 Diabetes*, Ed 2 Volume 262, Journal of Internal Medicine, 2007. Hal: 173 – 183. Diakses 8 Desember 2012.
15. Grant P J, *Diabetes Mellitus As A Prothrombotic condition*. Volume 262, Journal of Internal Medicine, Amerika, 2007, Hal : 157-172. Diakses 8 Desember 2012.
16. Ganiswarna SG, Setiabudy R, Suyatna FD, Purwastyastuti, Nafrialdi, *Farmakologi dan Terapi*, Ed 4, Bagian Farmakologi Fakultas Kedokteran Universitas Indonesia, Jakarta, 1995. Hal 738-761
17. Mehta AB, Hoffbrand AV, *At a Glance Hematologi*, Ed II, Penerbit Erlangga, Jakarta. 2007. Hal 70-82
18. Makin A, Silverman SH. *Oxford Journals Peripheral Vascular Disease and Virchow's Triad for Thrombogenesis*. Ed 4 Volume 94, QJ Med (QJM), London, 2002. Hal : 199 - 210. Diakses 8 Desember 2012
19. Thomson AD, Cotton RE, *Catatan Kuliah Patologi*, Ed 3, Penerbit Buku Kedokteran EGC, Jakarta, 1997. Hal 575-590
20. American Diabetes Association, *Diagnosis and Classification of Diabetes Melitus*. *Diabetes Care*, Amerika, 2004. Diakses 8 Desember 2012
21. Cheng D, *Prevalence, predisposition and prevention of type II diabetes*, Bio Med Central Nutrition & Metabolism, Amerika, 2005. Diakses 8 Desember 2012.
22. Sheperd PR, Kahn BB. *Glucose Transporter and Insulin Action*. *The New England Journal of Medicine*; 1999. Diakses 8 Desember 2012
23. Wilcox, Gisela. *Insulin and Insulin Resistance*. Clin Biochem Rev. Amerika, 2005. Hal: 19–39 Diakses 8 Desember 2012

24. Murray RK, Granner DK, Rodwell VW, Biokimia Harper, Ed 2, Jakarta. 2009. Hal 158-174,624-635
25. Sonatalia E, *Gambaran Profil Lipid Pada Diabetes Melitus Tipe Ii Yang Obesitas Dan Non-Obesitas Di RSUP.H. Adam Malik Medan*. Fakultas Kedokteran Universitas Sumatera Utara, Medan, 2010. Diakses 8 Desember 2012
26. Sheperd PR, Kahn BB. *Glucose Transporter and Insulin Action. The New England Journal of Medicine*, London, 1999. Hal: 19–39. Diakses 8 Desember 2012.
27. Shulman GI. *Cellular Mechanisms of Insulin Resistance* Volume 106, Number 2, *The Journal of Clinical Investigation*; Amerika, 2000;. Diakses 8 Desember 2012.
28. Clare, Salzler MJ, Crawford JM, & Kumar V, *Buku Ajar Patologi*. Edisi 7, Penerbit Buku Kedokteran EGC Jakarta, 2007., Hal 718 – 724.
29. Guyton, Arthur C. Hall, John E.. *Buku Ajar Fisiologi Kedokteran, Edisi 11*, Penerbit Buku Kedokteran EGC, Jakarta, 2007. Hal 1010-1027
30. Sudoyo A. W, Setiyohadi B, Alwi I, Simadibrata K.M, Setiati S. *Buku Ajar Ilmu Penyakit Dalam*, Ed.V. Jilid III. Interna Publishing Pusat Penerbitan Ilmu Penyakit Dalam. Jakarta. 2009. Hal 1865-1896
31. Perdana H, *Komplikasi dan Penyakit Penyerta pada Diabetes*, Bagian Ilmu Penyakit Dalam Fakultas Kedokteran Universitas Padjajaran/ Rumah Sakit Hasan Sadikin, Bandung, 2001. Diakses 20 Mei 2013.
32. Wicaksono RP, *Faktor-Faktor Yang Berhubungan Dengan Kejadian Diabetes Melitus Tipe 2*, Program Pendidikan Sarjana Kedokteran Fakultas Kedokteran Universitas Diponegoro, Semarang, 2011. Diakses 20 Mei 2013.
33. Wakyuni I, *Hubungan Antara Perubahan Bias Dan Glukosa Darah Pada Pasien Diabetes Melitus Tipe 2*, Fakultas Kedokteran Universitas Airlangga / RSUD Dr. Soetomo, Surabaya, 2011. Diakses 20 Mei 2013.
34. Wahyuni S, *Faktor-Faktor Yang Berhubungan Dengan Penyakit Diabetes Melitus (DM) Daerah Perkotaan Di Indonesia Tahun 2007*, Program Studi Kesehatan Masyarakat Fakultas Kedokteran Dan Ilmu Kesehatan Universitas Islam Negeri Syarif Hidayatullah, Jakarta, 2010. Diakses 20 Mei 2013.

35. Trisnawati SK, Sotyorogo S, *Faktor Resiko Kejadian DM Tipe 2 di Puskesmas Cengkareng Jakarta Barat Tahun 2012*, Program Studi SI Kesehatan Masyarakat STIKes MH. Thamrin, Jakarta, 2013. Diakses 20 Mei 2013.
36. Siregar J, *Perbandingan Kadar LDL Kolesterol Pada DM Tipe 2 dengan atau Tanpa Hipertensi*, Program Magister Kedokteran Klinik Ilmu Patologi Klinik Fakultas Kedokteran Universitas Sumatra Utara / RSUP Adam Malik, Medan, 2010. Diakses 20 Mei 2013.
37. Permana H, *Pengelolaan Hipertensi Pada Diabetes Melitus Tipe 2*, Bagian Ilmu Penyakit Dalam Fakultas Kedokteran Universitas Padjajaran, Bandung, 2011. Diakses 20 Mei 2013.
38. Hastuti RT, *Faktor-Faktor Resiko Ulkus Diabetika Pada Penderita Diabetes Melitus*, Program Studi Magister Epidemiologi Program Pasca Sarjana Universitas Diponegoro, Semarang, 2008. Diakses 20 Mei 2013.

LAMPIRAN I

TABEL HASIL PENELITIAN

1. Tabel hasil penelitian terhadap pasien diabetes melitus tipe 2

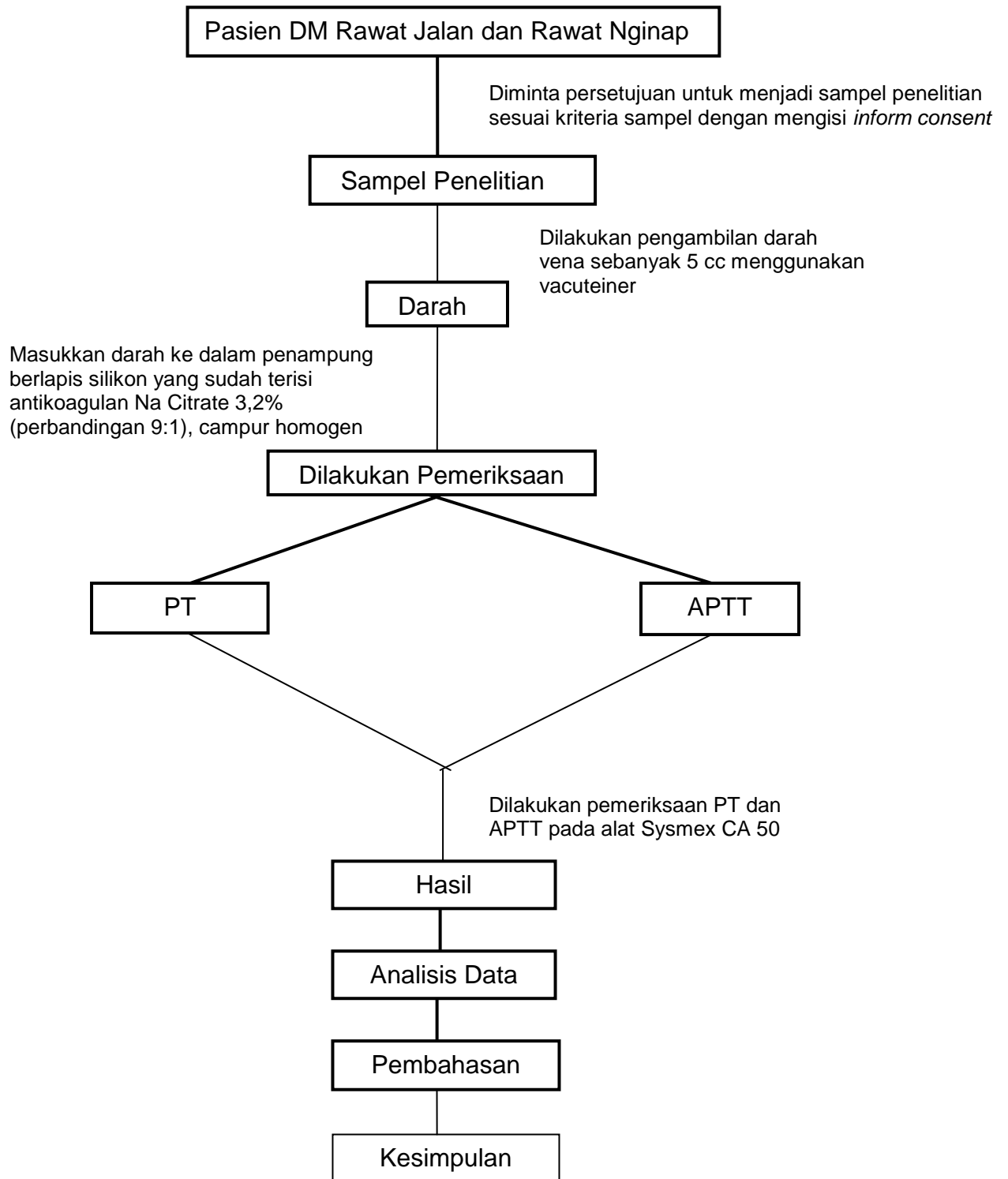
NO	NAMA	JENIS KELA-MIN	UMUR (TAHUN)	TEKANAN DARAH	LAMA DM ±(TAHUN)	GDS (mg/dl)	APTT	PT	INR
1	SJ	PR	41	180/100	5	349	23.7	12.0	1.00
2	MA	PR	47	160/90	7.5	320	23.6	18.4	1.52
3	AW	PR	58	180/90	3.5	300	22.6	14.1	1.18
4	AA	LK	42	160/90	2	304	25.1	8.2	0.69
5	SF	PR	52	200/80	4	232	25.7	11.3	0.94
6	AR	PR	59	180/70	5.5	265	21.3	11.3	0.94
7	AS	LK	55	120/80	20	439	34.4	9.8	0.82
8	DU	LK	57	130/90	5	205	27.5	17.1	1.42
9	DS	PR	72	180/70	15	257	22.7	10.2	0.85
10	UI	PR	58	120/80	1.5	256	22.7	8.7	0.73
11	VR	LK	65	170/80	7	275	22.4	11.4	0.95
12	TN	PR	52	170/60	2	205	24.4	7.1	0.60
13	HU	PR	60	150/80	2.6	210	30.4	8.9	0.74
14	KI	PR	64	130/70	2	250	22.5	13.8	1.15
15	LO	LK	52	160/80	1.5	283	21.6	11.1	0.93
16	LP	PR	62	180/90	20	275	23.4	10.6	0.88
17	KL	PR	64	150/70	14	256	24.4	12.2	1.02
18	HK	LK	67	140/80	1	330	27.3	12.3	1.02
19	NN	PR	78	160/80	2	235	23.4	8.8	0.73
20	KM	LK	62	170/60	1	340	23.7	10.9	0.91
21	IK	PR	75	170/50	15	250	25.5	11.4	0.95
22	WN	LK	49	140/80	10	203	33.5	14.9	1.23
23	PW	PR	68	140/70	7	204	27.5	10.4	0.87
24	LL	PR	54	170/80	2	307	25.3	11.4	0.95
25	QA	LK	64	140/60	20	209	28.4	11.0	0.92
26	JU	PR	42	150/90	2	205	22.4	9.1	0.76
27	AF	PR	62	160/90	20	267	23.3	10.8	0.90
28	NT	PR	70	120/70	10	214	26.7	10.7	0.89
29	FM	PR	74	140/80	20	265	46.2	15.5	1.28
30	IN	PR	62	170/80	15	212	28.1	11.0	0.92

2. Tabel kontrol yang tidak menderita diabetes melitus

NO	NAMA	JENIS KELAMIN	UMUR (TAHUN)	APTT	PT
1	A1	PR	46	26.9	11.0
2	A2	PR	42	23.2	11.5
3	A3	PR	47	29.0	9.9
4	A4	PR	45	28.7	11.8
5	A5	PR	44	26.8	10.2
6	A6	PR	65	24.6	9.4
7	A7	PR	40	25.7	11.3
8	A8	PR	44	32.2	17.4
9	A9	LK	45	29.3	13.1
10	A10	PR	43	32.3	11.4
11	A11	PR	47	26.6	11.9
12	A12	PR	47	27.3	10.8
13	A13	PR	45	36.3	11.3
14	A14	PR	43	31.0	12.0
15	A15	LK	66	26.0	10.4
16	A16	PR	57	26.0	8.4
17	A17	PR	42	28.4	12.2
18	A18	LK	42	28.2	10.8
19	A19	LK	41	27.3	12.2
20	A20	PR	40	36.1	10.8
21	A21	PR	69	34.5	9.9
22	A22	PR	42	27.6	11.2
23	A23	LK	41	26.6	10.0
24	A24	LK	40	28.4	12.2
25	A25	LK	47	28.2	10.7
26	A26	LK	53	26.4	12.0
27	A27	LK	41	26.4	12.6
28	A28	LK	52	28.6	10.2
29	A29	PR	47	28.1	12.0
30	A30	LK	67	26.8	10.3

LAMPIRAN II

SKEMA KERJA PENELITIAN



LAMPIRAN III
HASIL STATISTIKA

Descriptive Statistics

	N	Minimum	Maximum	Mean	Std. Deviation
Umur	30	41	78	59.57	9.747
Lama DM	30	1	20	8.10	6.951
GDS	30	203	439	264.07	55.030
APTT	30	21.30	46.20	25.9667	5.02273
PT	30	7.10	18.40	11.4800	2.53736
INR	30	.60	1.52	.9563	.20782
Valid N (listwise)	30				

umur * APTT Crosstabulation

		APTT			Total	
		<26,4	26,4-37,6	>37,6		
umur	<50	Count	4	1	0	5
		% within umur	80.0%	20.0%	.0%	100.0%
		% within APTT	20.0%	11.1%	.0%	16.7%
		% of Total	13.3%	3.3%	.0%	16.7%
	50-59	Count	7	2	0	9
		% within umur	77.8%	22.2%	.0%	100.0%
		% within APTT	35.0%	22.2%	.0%	30.0%
		% of Total	23.3%	6.7%	.0%	30.0%
	60-69	Count	6	5	0	11
		% within umur	54.5%	45.5%	.0%	100.0%
		% within APTT	30.0%	55.6%	.0%	36.7%
		% of Total	20.0%	16.7%	.0%	36.7%
>69	Count	3	1	1	5	
	% within umur	60.0%	20.0%	20.0%	100.0%	
	% within APTT	15.0%	11.1%	100.0%	16.7%	
	% of Total	10.0%	3.3%	3.3%	16.7%	
Total	Count	20	9	1	30	
	% within umur	66.7%	30.0%	3.3%	100.0%	
	% within APTT	100.0%	100.0%	100.0%	100.0%	
	% of Total	66.7%	30.0%	3.3%	100.0%	

umur * PT Crosstabulation

			PT			Total
			<9,8	9,8-12,1	>12,1	
umur	<50	Count	2	1	2	5
		% within umur	40.0%	20.0%	40.0%	100.0%
		% within PT	33.3%	6.2%	25.0%	16.7%
		% of Total	6.7%	3.3%	6.7%	16.7%
	50-59	Count	2	5	2	9
		% within umur	22.2%	55.6%	22.2%	100.0%
		% within PT	33.3%	31.2%	25.0%	30.0%
		% of Total	6.7%	16.7%	6.7%	30.0%
	60-69	Count	1	7	3	11
		% within umur	9.1%	63.6%	27.3%	100.0%
		% within PT	16.7%	43.8%	37.5%	36.7%
		% of Total	3.3%	23.3%	10.0%	36.7%
>69	Count	1	3	1	5	
	% within umur	20.0%	60.0%	20.0%	100.0%	
	% within PT	16.7%	18.8%	12.5%	16.7%	
	% of Total	3.3%	10.0%	3.3%	16.7%	
Total	Count	6	16	8	30	
	% within umur	20.0%	53.3%	26.7%	100.0%	
	% within PT	100.0%	100.0%	100.0%	100.0%	
	% of Total	20.0%	53.3%	26.7%	100.0%	

jenis kelamin * APTT Crosstabulation

			APTT			Total
			<26,4	26,4-37,6	>37,6	
jenis kelamin	1	Count	4	5	0	9
		% within jenis kelamin	44.4%	55.6%	.0%	100.0%
		% within APTT	20.0%	55.6%	.0%	30.0%
		% of Total	13.3%	16.7%	.0%	30.0%
	2	Count	16	4	1	21
		% within jenis kelamin	76.2%	19.0%	4.8%	100.0%
		% within APTT	80.0%	44.4%	100.0%	70.0%
		% of Total	53.3%	13.3%	3.3%	70.0%
Total	Count	20	9	1	30	
	% within jenis kelamin	66.7%	30.0%	3.3%	100.0%	
	% within APTT	100.0%	100.0%	100.0%	100.0%	
	% of Total	66.7%	30.0%	3.3%	100.0%	

jenis kelamin * pt Crosstabulation

			Pt			Total
			<9.8	9.8-12.1	>12.1	
jenis kelamin	1	Count	1	5	3	9
		% within jenis kelamin	11.1%	55.6%	33.3%	100.0%
		% within pt	16.7%	31.2%	37.5%	30.0%
		% of Total	3.3%	16.7%	10.0%	30.0%
	2	Count	5	11	5	21
		% within jenis kelamin	23.8%	52.4%	23.8%	100.0%
		% within pt	83.3%	68.8%	62.5%	70.0%
		% of Total	16.7%	36.7%	16.7%	70.0%
	Total	Count	6	16	8	30
		% within jenis kelamin	20.0%	53.3%	26.7%	100.0%
		% within pt	100.0%	100.0%	100.0%	100.0%
		% of Total	20.0%	53.3%	26.7%	100.0%

GDS * APTT Crosstabulation

			APTT			Total
			<26,4	26,4-37,6	>37,6	
GDS	<261	Count	9	7	0	16
		% within GDS	56.2%	43.8%	.0%	100.0%
		% within APTT	45.0%	77.8%	.0%	53.3%
		% of Total	30.0%	23.3%	.0%	53.3%
	261-320	Count	9	0	1	10
		% within GDS	90.0%	.0%	10.0%	100.0%
		% within APTT	45.0%	.0%	100.0%	33.3%
		% of Total	30.0%	.0%	3.3%	33.3%
	321-380	Count	2	1	0	3
		% within GDS	66.7%	33.3%	.0%	100.0%
		% within APTT	10.0%	11.1%	.0%	10.0%
		% of Total	6.7%	3.3%	.0%	10.0%
	>380	Count	0	1	0	1
		% within GDS	.0%	100.0%	.0%	100.0%
		% within APTT	.0%	11.1%	.0%	3.3%
		% of Total	.0%	3.3%	.0%	3.3%
Total	Count	20	9	1	30	
	% within GDS	66.7%	30.0%	3.3%	100.0%	
	% within APTT	100.0%	100.0%	100.0%	100.0%	
	% of Total	66.7%	30.0%	3.3%	100.0%	

GDS * pt Crosstabulation

			pt			Total
			<9.8	9.8-12.1	>12.1	
GDS	<261	Count	5	7	4	16
		% within GDS	31.2%	43.8%	25.0%	100.0%
		% within pt	83.3%	43.8%	50.0%	53.3%
		% of Total	16.7%	23.3%	13.3%	53.3%
	261-320	Count	1	6	3	10
		% within GDS	10.0%	60.0%	30.0%	100.0%
		% within pt	16.7%	37.5%	37.5%	33.3%
		% of Total	3.3%	20.0%	10.0%	33.3%
	321-380	Count	0	2	1	3
		% within GDS	.0%	66.7%	33.3%	100.0%
		% within pt	.0%	12.5%	12.5%	10.0%
		% of Total	.0%	6.7%	3.3%	10.0%
>380	Count	0	1	0	1	
	% within GDS	.0%	100.0%	.0%	100.0%	
	% within pt	.0%	6.2%	.0%	3.3%	
	% of Total	.0%	3.3%	.0%	3.3%	
Total	Count	6	16	8	30	
	% within GDS	20.0%	53.3%	26.7%	100.0%	
	% within pt	100.0%	100.0%	100.0%	100.0%	
	% of Total	20.0%	53.3%	26.7%	100.0%	

lama menderit DM * APTT Crosstabulation

			APTT			Total
			<26,4	26,4-37,6	>37,6	
lama menderit DM	<6	Count	13	3	0	16
		% within lama menderit DM	81.2%	18.8%	.0%	100.0%
		% within APTT	65.0%	33.3%	.0%	53.3%
		% of Total	43.3%	10.0%	.0%	53.3%
	6-10	Count	2	3	0	5
		% within lama menderit DM	40.0%	60.0%	.0%	100.0%
		% within APTT	10.0%	33.3%	.0%	16.7%
		% of Total	6.7%	10.0%	.0%	16.7%
	11-15	Count	3	1	0	4
		% within lama menderit DM	75.0%	25.0%	.0%	100.0%
		% within APTT	15.0%	11.1%	.0%	13.3%
		% of Total	10.0%	3.3%	.0%	13.3%
>15	Count	2	2	1	5	
	% within lama menderit DM	40.0%	40.0%	20.0%	100.0%	
	% within APTT	10.0%	22.2%	100.0%	16.7%	

	% of Total	6.7%	6.7%	3.3%	16.7%
Total	Count	20	9	1	30
	% within lama menderita DM	66.7%	30.0%	3.3%	100.0%
	% within APTT	100.0%	100.0%	100.0%	100.0%
	% of Total	66.7%	30.0%	3.3%	100.0%

lama menderita DM * pt Crosstabulation

			pt			Total
			<9.8	9.8-12.1	>12.1	
lama menderita DM	<6	Count	6	6	4	16
		% within lama menderita DM	37.5%	37.5%	25.0%	100.0%
		% within pt	100.0%	37.5%	50.0%	53.3%
		% of Total	20.0%	20.0%	13.3%	53.3%
	6-10	Count	0	3	2	5
		% within lama menderita DM	.0%	60.0%	40.0%	100.0%
		% within pt	.0%	18.8%	25.0%	16.7%
		% of Total	.0%	10.0%	6.7%	16.7%
	11-15	Count	0	3	1	4
		% within lama menderita DM	.0%	75.0%	25.0%	100.0%
		% within pt	.0%	18.8%	12.5%	13.3%
		% of Total	.0%	10.0%	3.3%	13.3%
>15	Count	0	4	1	5	
	% within lama menderita DM	.0%	80.0%	20.0%	100.0%	
	% within pt	.0%	25.0%	12.5%	16.7%	
	% of Total	.0%	13.3%	3.3%	16.7%	
Total	Count	6	16	8	30	
	% within lama menderita DM	20.0%	53.3%	26.7%	100.0%	
	% within pt	100.0%	100.0%	100.0%	100.0%	
	% of Total	20.0%	53.3%	26.7%	100.0%	

tekanan darah * APTT Crosstabulation

			APTT			Total
			<26,4	26,4-37,6	>37,6	
tekanan darah	normal	Count	2	3	0	5
		% within tekanan darah	40.0%	60.0%	.0%	100.0%
		% within APTT	10.0%	33.3%	.0%	16.7%
		% of Total	6.7%	10.0%	.0%	16.7%
	tidak normal	Count	18	6	1	25
		% within tekanan darah	72.0%	24.0%	4.0%	100.0%
		% within APTT	90.0%	66.7%	100.0%	83.3%
		% of Total	60.0%	20.0%	3.3%	83.3%
Total	Count	20	9	1	30	
	% within tekanan darah	66.7%	30.0%	3.3%	100.0%	

	% within APTT	100.0%	100.0%	100.0%	100.0%
	% of Total	66.7%	30.0%	3.3%	100.0%

tekanan darah * pt Crosstabulation

			pt			Total
			<9.8	9.8-12.1	>12.1	
tekanan darah	normal	Count	1	2	2	5
		% within tekanan darah	20.0%	40.0%	40.0%	100.0%
		% within pt	16.7%	12.5%	25.0%	16.7%
		% of Total	3.3%	6.7%	6.7%	16.7%
	tidak normal	Count	5	14	6	25
		% within tekanan darah	20.0%	56.0%	24.0%	100.0%
		% within pt	83.3%	87.5%	75.0%	83.3%
		% of Total	16.7%	46.7%	20.0%	83.3%
Total		Count	6	16	8	30
		% within tekanan darah	20.0%	53.3%	26.7%	100.0%
		% within pt	100.0%	100.0%	100.0%	100.0%
		% of Total	20.0%	53.3%	26.7%	100.0%

APTT Kontrol

		Frequency	Percent	Valid Percent	Cumulative Percent
Valid	<26.4 detik (pemendekan)	5	16.7	16.7	16.7
	26.4-37.6 detik (normal)	24	80.0	80.0	96.7
	>37.6 detik (pemanjangan)	1	3.3	3.3	100.0
	Total	30	100.0	100.0	

PT Kontrol

		Frequency	Percent	Valid Percent	Cumulative Percent
Valid	<9.8 detik (pemendekan)	2	6.7	6.7	6.7
	9.8-12.1detik (normal)	22	73.3	73.3	80.0
	>12.1 detik (pemanjangan)	6	20.0	20.0	100.0
	Total	30	100.0	100.0	

PT DM Tipe 2

	Frequency	Percent	Valid Percent	Cumulative Percent
Valid <9.8 detik (pemendekan)	6	20.0	20.0	20.0
9.8-12.1detik (normal)	16	53.3	53.3	73.3
>12.1 detik (pemanjangan)	8	26.7	26.7	100.0
Total	30	100.0	100.0	

APTT DM Tipe 2

	Frequency	Percent	Valid Percent	Cumulative Percent
Valid <26.4 detik (pemendekan)	20	66.7	66.7	66.7
26.4-37.6 detik (normal)	9	30.0	30.0	96.7
>37.6 detik (pemanjangan)	1	3.3	3.3	100.0
Total	30	100.0	100.0	

Diagram batang frekuensi PT dan APTT pada DM tipe 2

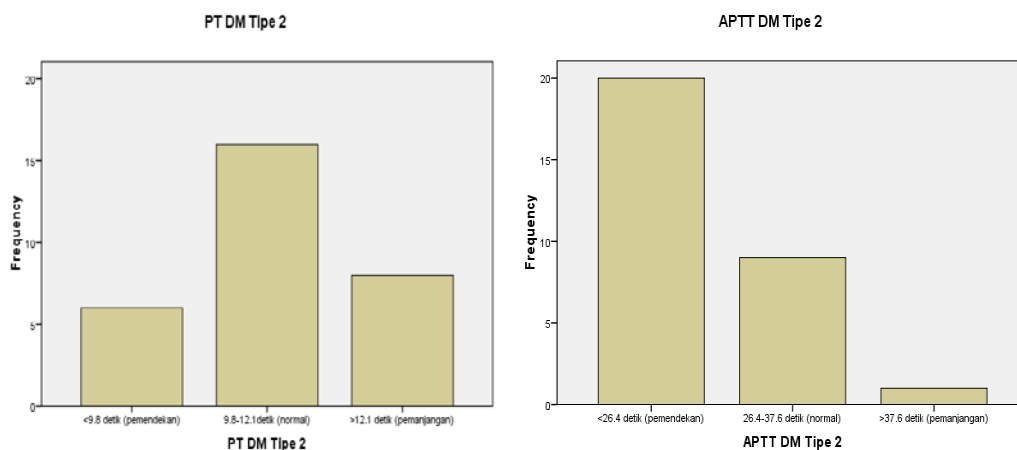
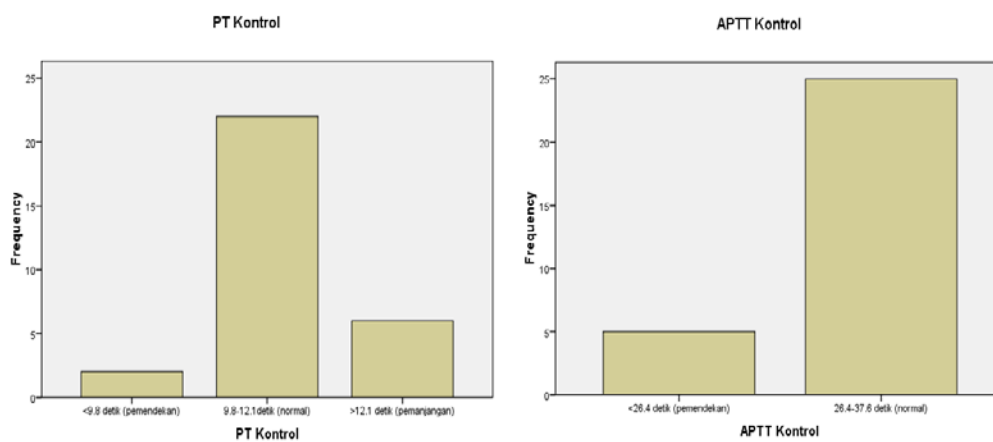


Diagram batang frekuensi PT dan APTT pada kontrol



One-Sample Kolmogorov-Smirnov Test

	Umur	Lama DM	GDS	APTT	PT	INR	
N	30	30	30	30	30	30	
Normal Parameters ^a	Mean	59.57	8.10	264.07	25.97	11.4800	.9563
	Std. Deviation	9.747	6.951	55.030	5.023	2.53736	.20782
Most Extreme Differences	Absolute	.099	.179	.134	.188	.213	.212
	Positive	.064	.179	.121	.188	.213	.212
	Negative	-.099	-.153	-.134	-.176	-.074	-.072
Kolmogorov-Smirnov Z	.540	.982	.732	1.029	1.164	1.162	
Asymp. Sig. (2-tailed)	.933	.290	.658	.240	.133	.134	

Test distribution is Normal

Correlations

	Lama DM	APTT
Lama DM	Pearson Correlation	1
	Sig. (2-tailed)	.445*
	N	30
APTT	Pearson Correlation	.445*
	Sig. (2-tailed)	.014
	N	30

*. Correlation is significant at the 0.05 level (2-tailed).

Correlations

		Lama DM	PT
Lama DM	Pearson Correlation	1	.126
	Sig. (2-tailed)		.506
	N	30	30
PT	Pearson Correlation	.126	1
	Sig. (2-tailed)	.506	
	N	30	30

LAMPIRAN IV

GAMBAR HASIL PENELITIAN



Keterangan gambar alat Sysmex CA 50



Keterangan gambar reagen thromborel, actin, CaCl_2