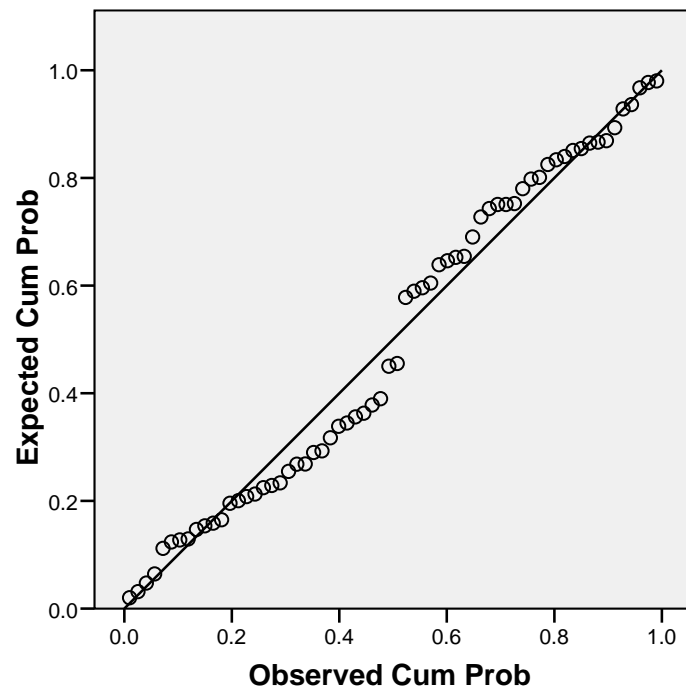


Lampiran : Uji Asumsi Klasik

a. Normalitas

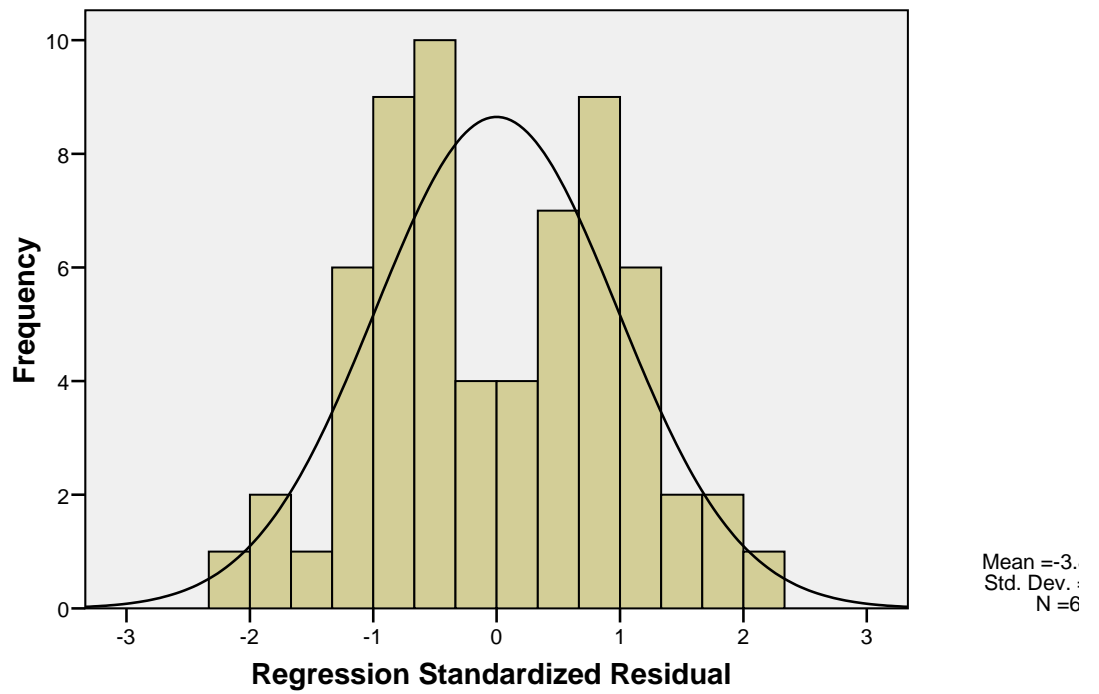
Normal P-P Plot of Regression Standardized Residual

Dependent Variable: Organizational citizenship behavior



Histogram

Dependent Variable: Organizational citizenship behavior



b. Tidak terjadi Multikolinieritas

Coefficients(a)

Model	Unstandardized Coefficients	Standardized Coefficients	t	Sig.	Collinearity Statistics

		B	Std. Error	Beta			Tolerance	VIF
1	(Constant)	23.472	9.312		2.521	.014		
	Kecerdasan Emosional	.367	.097	.424	3.798	.000	.990	1.010
	Komitmen Organisasi	.218	.080	.305	2.735	.008	.990	1.010

a Dependent Variable: Organizational citizenship behavior

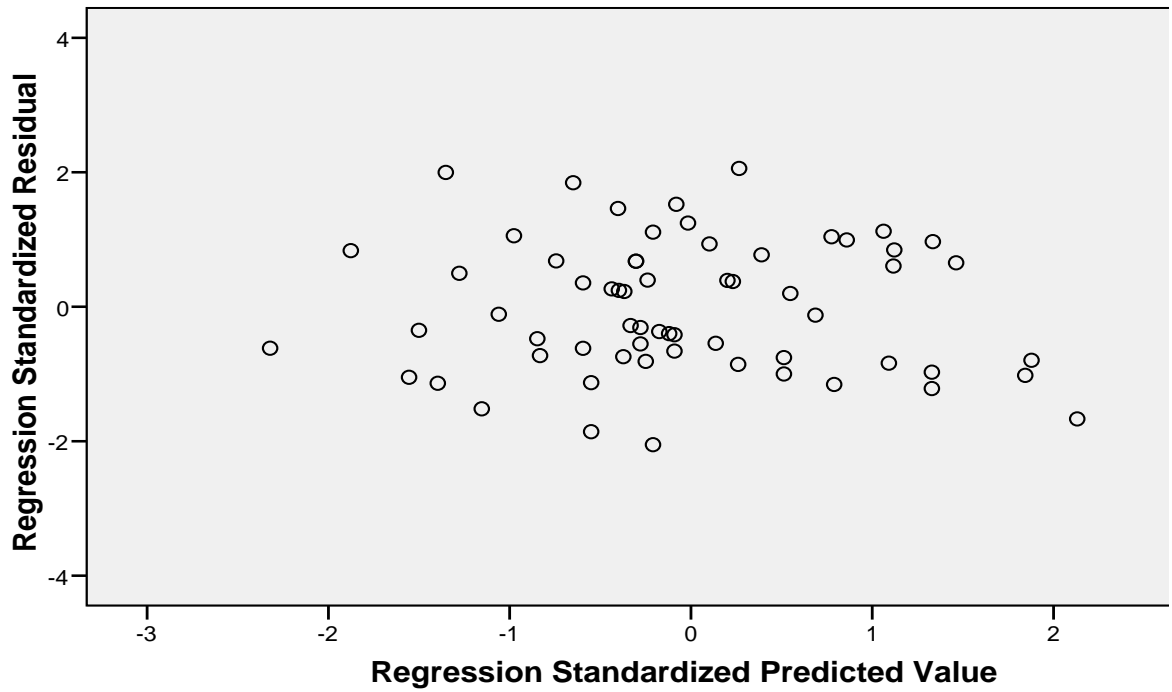
C. Tidak Terjadi Heteroskedastisitas

Correlations

		Organizational citizenship behavior	Kecerdasan Emosional	Komitmen Organisasi
Pearson Correlation	Organizational citizenship behavior	1.000	.394	.263
	Kecerdasan Emosional	.394	1.000	-.100
	Komitmen Organisasi	.263	-.100	1.000
Sig. (1-tailed)	Organizational citizenship behavior	.	.001	.018
	Kecerdasan Emosional	.001	.	.217
	Komitmen Organisasi	.018	.217	.
N	Organizational citizenship behavior	64	64	64
	Kecerdasan Emosional	64	64	64
	Komitmen Organisasi	64	64	64

Scatterplot

Dependent Variable: Organizational citizenship behavior



Lampiran : Hasil Analisis Regresi

Variables Entered/Removed^a

Model	Variables Entered	Variables Removed	Method
1	Komitmen Organisasi, Kecerdasan Emosional ^a		Enter

a. All requested variables entered.

b. Dependent Variable: Organizational citizenship behavior

Model Summary^a

Model	R	R Square	Adjusted R Square	Std. Error of the Estimate	Change Statistics					Durbin-Watson
					R Square Change	F Change	df1	df2	Sig. F Change	
1	.497 ^a	.247	.223	4.112	.247	10.021	2	61	.000	1.447

a. Predictors: (Constant), Komitmen Organisasi, Kecerdasan Emosional

b. Dependent Variable: Organizational citizenship behavior

ANOVA^b

Model		Sum of Squares	df	Mean Square	F	Sig.
1	Regression	338.945	2	169.473	10.021	.000 ^a
	Residual	1031.664	61	16.913		
	Total	1370.609	63			

a. Predictors: (Constant), Komitmen Organisasi, Kecerdasan Emosional

b. Dependent Variable: Organizational citizenship behavior

Coefficients^a

Model		Unstandardized Coefficients		Standardized Coefficients	t	Sig.	95% Confidence Interval for B		Correlations			Collinearity Statistics		
		B	Std. Error	Beta			Lower Bound	Upper Bound	Zero-order	Partial	Part	Tolerance	VIF	
1	(Constant)	23.472	9.312		2.521	.014	4.852	42.092						
	Kecerdasan Emosional	.367	.097	.424	3.798	.000	.174	.561	.394	.437	.422	.990	1.010	
	Komitmen Organisasi	.218	.080	.305	2.735	.008	.059	.377	.263	.331	.304	.990	1.010	

a. Dependent Variable: Organizational citizenship behavior