

DAFTAR PUSTAKA

- Achmadi, T. 2001. *Model Hidraulik Gerusan pada Pilar Jembatan*, Universitas Diponegoro, Semarang.
- Aisyah, S. 2010. *Pola Gerusan Lokal diberbagai Bentuk Pilar Akibat Adanya Variasi Debit*. Tugas Akhir. Universitas Gajah Mada, Yogyakarta.
- Anggrahini. 1997. *Hidrolika saluran terbuka*, Cetakan pertama Citra Media, Surabaya.
- Ariyanto. 2009. *Analisis Bentuk Pilar Jembatan Terhadap Potensi Gerusan Lokal*, Jurnal Teknik Sipil (<http://googlee>, diakses 8 Pebruari 2011).
- Cahyono Ikhsan, Dkk. 2008. *Analisis Susunan Tirai Optimal Sebagai Proteksi Pada Pilar Jembatan Dari Gerusan Lokal* Jurnal Teknik Sipil, UGM Yogyakarta, (<http://googlee>, diakses 8 Pebruaria 2011).
- Darsono, S. 1994. *Pengendalian Erosi Untuk Mengatasi Angkutan Sedimen yang Berlebihan Pada Sungai*, Jurnal (<http://googlee>, diakses 8 Pebruaria 2011).
- Kodoatie. J Robert. 2002. *Hidrolika Terapan, Aliran Pada Saluran Terbuka dan Pipa*, Andi, Yogyakarta.
- Legono, D. 2001. *Hidrolika Bangunan Sungai*, UGM Yogyakarta.
- Makrup, L. 2001. *Dasar-dasar analisis aliran di sungai dan muara*, Cetakan pertama, UII Press, Yogyakarta.
- Mulyanto, H.R. 2007. *Sungai, Fungsi Dan Sifat-Sifatnya*, Edisi Pertama, Penerbit Graha Ilmu, Yogyakarta.
- Okky, M.W. 2007. *Pengaruh Arah Arus Aliran terhadap Gerusan Lokal di Sekitar Pilar Jembatan*. Tugas Akhir, UNNES, Semarang.
- Oli'i Aleks. 1995. *Studi Gerusan Sekitar Pilar Jembatan Akibat Aliran_Sungai*, (Tesis), UGM, Yogyakarta.
- Pallu, M.Saleh. 2004. *Diktat Kuliah Mekanika Fluida*. Teknik Sipil Universitas Hasanuddin, Makassar.
- Pallu, Saleh. 2006. *Diktat Kuliah Metode Penelitian Dan Penulisan Ilmiah*. Teknik Sipil Universitas Hasanuddin, Makassar.

LAMPIRAN

TABEL DATA PENGAMATAN PENELITIAN LABORATORIUM Bukaan = 45° (-), Waktu = 30 menit Model Tipe : Ambang Baja

JUDUL TESIS : STUDI PENGARUH VARIASI BANGUNAN TERHADAP AGRADASI DAN DEGRADASI DASAR SUNGAI
 PENELITI : ABDUL RAFIUIDDIN RASYID
 LOKASI PENELITIAN : LAB. SUNGAI FAK. TEKNIK UNHAS MAKASSAR

Hari / Tgl Pengambilan Data : Jum'at , 14/12/2012 Q = 0,0083 m³/dtk T = 26 °C

No.	Lokasi Pengukuran / Pias	Kecepatan (V) FloWatch (m/det)			No	Tinggi Muka Air	Mistar / Meter (cm)			
		Kiri	Tengah	Kanan			Kiri	Tengah	Kanan	
1	Hulu	0.1	0.1	0.1	1	Hulu	P1	9.3	9.3	9.3
2	P6	0.1	0.1	0.1	2		P6	9.9	9.8	9.6
3	P11	0.1	0.1	0.1	3		P11	9.8	9.8	9.6
4	Tengah	0.1	0.1	0.1	4	Tengah	P16	9.8	9.8	9.8
5	P21	0.1	0.1	0.1	5		P21	10.1	10.1	10
6	P26	0.1	0.1	0.1	6		P26	10.6	10.7	10.7
7	P31	0.1	0.1	0.1	7		P31	11.8	11.6	12
8	Diatas Ambang P32	0.6	0.6	0.6	8	Diatas Ambang P32		3.5	3.5	3.5
9	Disamping Ambang Hilir 32 a	0.8	0.8	0.8	9	Disamping Ambang Hilir 32 a		5.5	5.5	5.5
10	32b	1	1	1	10	32b		8	8	8
11	Hilir	0.1	0.1	0.1	11	Hilir	P33	30	31	29
12	P37	0.4	0.4	0.4	12		P37	3.7	3.7	4
13	P42	0.5	0.5	0.5	13		P42	3.6	3	3.5
14	P47	0.5	0.4	0.5	14		P47	3.5	3	3

No pias (stasion)	Elevasi Titik (cm) kedalaman gerusan										
	1	2	3	4	5	6	7	8	9	10	11
1	19.3	19.3	19.6	19.6	19.5	19.5	19.6	19.6	19.6	19.5	19.5
2	19.5	19.2	19.4	19.5	19.5	19.7	19.7	19.7	19.6	19.8	20.1
3	19.8	19.1	19.1	19.3	19.4	19.5	19.7	19.4	19.5	19.6	19.6
4	19.7	19.5	19.6	19.7	19.7	19.4	19.5	19.6	19.7	19.6	19.8
5	19.8	19.8	19.5	19.4	19.4	19.3	19.4	19.6	19.5	19.5	19.5
6	19.9	19.7	19.7	19.7	19.8	19.7	19.8	19.6	19.5	19.6	19.5
7	19.9	19.8	19.8	19.7	19.7	19.8	19.8	19.8	19.9	19.9	19.8
8	20	20.1	20	20	20.1	20	20	19.9	20	20	20
9	20	19.9	19.8	19.8	19.9	20	20	19.9	19.8	20	19.9
10	20	20	20	19.9	19.9	19.9	19.9	20	19.9	20	20
11	19.8	20	20	20	20	20	20	20	20.3	20.4	20.3
12	19.7	19.7	19.9	20	19.9	20	20.1	20	20.1	20.3	20.2
13	19.5	19.6	19.7	19.8	20	20	20	20.1	20.3	20.3	20.3
14	19.5	19.6	19.7	19.7	19.8	20	20	20	20	20	20
15	19.6	19.5	19.5	19.5	19.6	19.5	19.5	19.6	19.6	19.5	19.5
16	19.5	19.5	19.5	19.6	19.6	19.5	19.5	19.5	19.4	19.4	19.4
17	19.5	19.5	19.5	19.7	19.7	19.7	19.7	19.6	19.6	19.7	19.7
18	19.7	19.8	19.8	19.9	20.1	20.2	20.2	20.5	20.5	20.3	20.3
19	19.9	19.9	19.9	20	20	20	20.1	20.4	20.4	20.4	20.4
20	19.5	19.7	19.8	19.9	20	20.2	20	20.4	20.4	20.3	20.3
21	19.6	19.8	19.8	19.8	19.9	20	19.8	20	20	20.2	20.1
22	19.8	19.9	19.8	19.9	20	19.9	19.8	19.9	19.9	20	20
23	20.2	20.2	20.3	20.3	20.3	20.3	20.4	20.5	20.5	20.4	20.2
24	20	19.9	20.1	20	20.2	20.2	20	20.6	20.6	20.7	20
25	19.5	19.5	19.5	19.8	19.8	19.8	19.8	19.9	19.9	19.8	20
26	19.8	19.8	19.9	19.9	19.9	19.9	20	19.9	19.9	19.8	19.6
27	19.9	20.1	20.1	20.1	20	20	20	20.1	19.9	20.1	19.9

No pias (stasion)	Elevasi Titik (cm) kedalaman gerusan										
	1	2	3	4	5	6	7	8	9	10	11
28	20	20.1	19.9	19.8	19.8	19.9	19.9	20	20.1	19.9	20
29	20.8	20.5	20.5	20.1	20.2	19.8	19.9	19.9	19.9	19.8	19.8
30	20.9	20.5	20.4	20.1	20.1	20.1	20	20	20	19.8	19.7
31	2.8	20.8	20.5	20.3	20.1	20	20	20.2	20.1	20.1	20
32	0	0	0	0	0	0	0	0	0	0	0
33	48.6	48.4	48.3	47.9	47.6	47.4	47.2	46.5	46.1	44.8	43.8
34	38.6	39.5	40	40.4	40.4	40.3	40	39.1	38.7	37.4	38.5
35	28	28.9	28.9	29.4	29.5	29	29	29	29	28.6	28.5
36	20.9	21.4	21.6	21.9	21.9	21.8	21.2	21.2	20.8	20.3	20.5
37	22.9	22.3	21.6	21.3	21.5	21.2	21.1	21.6	20.8	21.5	22.1
38	22.1	22.1	21.4	21.3	21.1	21.7	21.2	20.9	20.5	22	22.5
39	22.3	22	22.1	21.3	21.4	21.1	20.9	21.2	21.4	21.9	21.9
40	22.4	22.4	22	21.7	21.3	21.1	21.1	21.6	21	21.7	22.4
41	22.4	22.7	22.1	21.8	21.8	21.6	21.6	21.4	21.6	21.3	21.9
42	22.5	22.7	22.6	22.3	22.5	22	22	22	22.8	22.1	22
43	22.6	22.2	22.3	22.4	22.3	22.1	22.1	22.3	22.5	22.5	22.3
44	22.6	22.7	22.4	22.6	22.4	22.6	22.6	22.3	22.2	22.1	22.2
45	22.9	22.6	22.6	22.3	22.4	22.3	22.3	22.3	22.1	22.2	22.1
46	23.1	23.2	22.8	23	22.6	22.9	22.9	22.5	22.4	22.6	22.4
47	24	23.6	23.4	23.2	23	23.4	23.4	22.8	23.2	22.5	22.6

TABEL DATA PENGAMATAN PENELITIAN LABORATORIUM Bukaan = 45° (8), Waktu = 60 menit Model Tipe : Ambang Baja

JUDUL TESIS : STUDI PENGARUH VARIASI BANGUNAN TERHADAP AGRADASI DAN DEGRADASI DASAR SUNGAI
 PENELITI : ABDUL RAFI UDDIN RASYID
 LOKASI PENELITIAN : LAB. SUNGAI FAK. TEKNIK UNHAS MAKASSAR

Hari / Tgl Pengambilan Data : Jum'at, 14/12/2012 Q = 0,0083 m³/dtk T = 26 °C

No.	Lokasi Pengukuran / Pias	Kecepatan (V) FloWatch (m/det)			No	Tinggi Muka Air	Mistar / Meter (cm)		
		Kiri	Tengah	Kanan			Kiri	Tengah	Kanan
1	Hulu	0.1	0.1	0.1	1	Hulu	9	9	9.2
2	P1	0.1	0.1	0.1	2	P6	9.8	9.6	9.4
3	P6	0.1	0.1	0.1	3	Running	9.8	9.6	9.5
4	P11	0.1	0.1	0.1	4	Tengah	10	9.9	9.8
5	P16	0.1	0.1	0.1	5	P21	10.2	10	10
6	P21	0.1	0.1	0.1	6	P26	10.4	10.6	10.6
7	P26	0.1	0.1	0.1	7	P31	11.9	11.9	11
8	P31	0.1	0.1	0.1	8	Diatas Ambang P32	3.5	3.5	3.5
9	P32	0.6	0.6	0.6	9	Disamping Ambang Hilir 32 a	5.5	5.5	5.5
10	Disamping Ambang Hilir 32 a	0.8	0.8	0.8	10	32b	9	9	9
11	32b	1	1	1	11	Hilir	32	32.3	31.7
12	P33	0.1	0.1	0.1	12	P37	4	3.8	4
13	P37	0.4	0.4	0.4	13	P42	3	3	3.5
14	P42	0.4	0.4	0.4	14	P47	3	3.5	3.5

No pias (stasion)	Elevasi Titik (cm) kedalaman gerusan										
	1	2	3	4	5	6	7	8	9	10	11
1	19.5	19.5	19.3	19.3	19.4	19.5	19.6	19.7	19.9	20.1	20.1
2	19.5	19.4	19.4	19.4	19.6	19.8	19.8	19.8	19.7	19.8	19.9
3	19.2	19.2	19.2	19.4	19.5	19.5	19.6	19.5	19.4	19.5	19.6
4	19.5	19.6	19.7	19.6	19.5	19.6	19.6	19.6	19.5	19.7	19.8
5	19.8	19.5	91.2	19.3	19.3	19.4	19.5	19.6	19.6	19.6	19.5
6	20	19.8	19.4	19.4	19.4	19.5	19.6	19.6	19.5	19.5	19.5
7	20	19.9	19.9	19.8	19.8	19.8	19.7	19.7	19.6	19.6	19.6
8	20	20	20	20	20.1	20	20	20	20.1	20.1	20
9	20	20	20	20	20.1	20.1	20	20	19.9	19.9	19.8
10	20	20	20	20	20.1	20	20	19.9	19.9	20	20.1
11	20	20	20	20.1	20	20.1	20.1	20.1	20.1	20.2	20.1
12	19.8	19.8	19.9	20	20	20.1	20.1	20	20.1	20	20
13	19.6	19.8	19.8	19.9	20	20.1	20.1	20.1	20.1	20.1	20.1
14	19.6	19.7	19.7	20	20	20	20	20	20	20	20
15	19.7	19.6	19.7	19.7	19.7	19.8	19.8	19.6	19.6	19.6	19.6
16	19.7	20	19.8	19.7	19.8	19.8	19.7	19.5	19.5	19.5	19.5
17	19.6	19.6	19.6	19.7	19.8	19.8	19.8	19.8	19.8	19.8	19.8
18	19.8	19.8	19.9	20.1	20	20.1	20	20.1	20.2	20.2	20.2
19	20	20	20	20.1	20	20.1	20.1	20.2	20.2	20.2	20.3
20	19.8	19.9	19.9	20	20	20	20.1	20.1	20.2	20.2	20.2
21	19.7	19.9	19.8	19.9	19.9	20.1	20	20	20.1	20	20
22	20	20	20	19.9	20	20	20	20	20	20	20
23	20.3	20.3	20.4	20.4	20.3	20.3	20.3	20.3	20.3	20.2	20.2
24	20	20.1	20	20.2	20.1	20.1	20	20	20.2	20.1	20
25	19.8	19.8	19.9	19.8	19.9	20	19.9	19.9	19.9	20	20.1
26	19.9	20	20.1	20	20	20	19.9	20	20	19.9	19.9
27	19.9	20.1	20	20	19.9	19.8	19.9	19.9	20	19.9	20.1

No pias (stasion)	Elevasi Titik (cm) kedalaman gerusan										
	1	2	3	4	5	6	7	8	9	10	11
28	20.1	20.2	20	20	19.9	19.8	19.9	19.8	19.9	20	20
29	20	20.2	20.1	20.2	20.3	19.9	19.8	19.9	19.8	19.8	20
30	20.1	20.2	19.9	19.9	19.9	20	19.9	19.8	20	19.8	19.9
31	20.2	20.4	20.3	20.4	20.2	20.2	20.1	20.2	20	19.9	19.9
32	0	0	0	0	0	0	0	0	0	0	0
33	44.3	44.9	48.3	49.6	49	48.8	48.3	48.6	48.2	47.5	46.8
34	40.3	41	41.2	40.9	39.9	39.7	39.5	39.2	39.3	38.5	38
35	31.3	31.1	30.9	30.9	31	31.1	31	30.8	30.6	29.9	29.9
36	26.4	24.8	23.6	23.7	24.2	23.7	23.3	22.9	22.8	22.2	25
37	25.8	24.2	23.6	22.8	22.8	22.7	23	22.7	23	24.1	24
38	25.4	23.5	24.4	23.3	22.6	22.7	22.5	23.1	24	24.5	25
39	23.8	23.5	24.1	23.2	22.7	22.7	22.8	23.5	23.7	23	24.3
40	23.5	23.3	23.6	23.4	23.3	22.9	23.3	23.2	23	23.5	23.2
41	24	23.4	23.5	23.6	23.5	23.2	23.4	23.7	23.8	23.8	24.5
42	23.5	23.5	24.1	23.6	24	23.7	23.8	24	23.8	24.1	24.4
43	24	23.8	23.6	24	23.8	23.8	23.9	24	24.2	24.3	24
44	24.2	23.8	23.9	23.9	23.9	24	23.8	23.8	24.1	24.2	24.3
45	24.4	24	23.9	23.8	23.7	23.9	23.9	24.3	24.2	24.4	24.1
46	24.9	24.5	24	24.3	23.8	24.3	23.8	23.9	24.4	23.9	24.2
47	24.3	24.7	25.2	24.1	24.3	23.9	24.1	24.3	24.7	24.5	24.2

TABEL DATA PENGAMATAN PENELITIAN LABORATORIUM Bukaan = 60° (-), Waktu = 30 menit Model Tipe : Ambang Baja

JUDUL TESIS : STUDI PENGARUH VARIASI BANGUNAN TERHADAP AGRADASI DAN DEGRADASI DASAR SUNGAI
 PENELITI : ABDUL RAFIUDDIIN RASYID
 LOKASI PENELITIAN : LAB. SUNGAI FAK. TEKNIK UNHAS MAKASSAR

Hari / Tgl Pengambilan Data : Sabtu , 15/12/2012 Q = 0,0091 m³/dtk T = 26 °C

No.	Lokasi Pengukuran / Pias	Kecepatan (V) FloWatch (m/det)			No	Tinggi Muka Air	Mistar / Meter (cm)			
		Kiri	Tengah	Kanan			Kiri	Tengah	Kanan	
1	Hulu	0.1	0.1	0.1	1	Hulu	P1	9.9	10	9.9
2	P6	0.1	0.1	0.1	2		P6	10.7	10.6	10.4
3	P11	0.1	0.1	0.1	3		P11	10.6	10.4	10.3
4	Tengah	0.1	0.1	0.1	4	Tengah	P16	10.6	10.6	10.6
5	P21	0.1	0.1	0.1	5		P21	11	11	10.7
6	P26	0.1	0.1	0.1	6		P26	11.2	11.3	11.4
7	P31	0.1	0.1	0.1	7		P31	12	12	12
8	Diatas Ambang P32	0.7	0.7	0.7	8	Diatas Ambang P32	P32	4.5	4.5	4.5
9	Disamping Ambang Hilir 32 a	0.9	0.9	0.9	9	Disamping Ambang Hilir 32 a	P32	6.5	6.5	6.5
10	32b	1.1	1.1	1.1	10		32b	9.7	9.7	9.7
11	Hilir	0.1	0.1	0.1	11	Hilir	P33	32.5	32.5	33
12	P37	0.4	0.4	0.4	12		P37	4.5	4.5	4.7
13	P42	0.5	0.5	0.5	13		P42	3.5	2.5	3.7
14	P47	0.5	0.5	0.5	14		P47	4	3.5	3.5

No pias (stasion)	Elevasi Titik (cm) kedalaman gerusan										
	1	2	3	4	5	6	7	8	9	10	11
28	19.9	29.9	19.9	19.7	19.7	19.7	19.8	19.9	19.8	20	20
29	29.8	20.4	20.2	20	19.9	19.6	19.5	19.6	19.5	19.8	19.5
30	20.3	20.4	20.2	19.9	19.9	19.6	19.7	19.6	19.9	19.7	19.8
31	20.4	20.2	20	19.9	19.9	19.9	19.9	19.8	19.8	19.9	19.9
32	0	0	0	0	0	0	0	0	0	0	0
33	47.2	47	48.8	48.7	48.4	48.2	48.1	48.1	47.8	47.6	47.5
34	41.6	42.9	42.5	42.1	42.6	42.2	42.1	41.6	40.6	39.8	39.1
35	30	30.2	30.6	30.3	30.5	30.7	30.6	30.6	30.5	30	30.6
36	24.6	23.1	22.9	23.1	23.1	23.1	23	22.4	22	22.8	25.4
37	23.4	22.2	21.8	21.9	22	21.9	22	21.8	22.2	22.5	23.5
38	22.2	22.5	22.1	21.6	21.7	21.6	22.6	21.8	22.4	23.4	23.5
39	23	21.9	22	21.4	21.4	21.6	21.7	22.6	22.4	22.4	23.5
40	22.1	22	22.1	22.1	21.9	21.5	21.8	21.6	22.5	22.5	23.1
41	22.5	23.2	22.2	22.3	21.9	22.1	22.2	22.4	22.5	22.4	22.2
42	22.4	22.8	22.4	22.3	22.6	22.5	22.6	22.8	22.6	22.3	22
43	22.9	22.6	22.3	23	22.9	22.6	22.7	23	22.7	22.7	23.2
44	23	22.9	22.6	22.8	22.5	22.5	22.3	22.6	22.4	22.4	22.6
45	23.6	22.1	23.4	23.3	22.8	22.6	22.4	22.6	22.8	22.6	23
46	23.7	23.2	23.2	23.2	23.3	23.3	22.6	23.4	22.4	22.4	22.6
47	24.6	24.2	23.6	23.4	23.4	22.7	23	22.8	22.7	22.5	22.6

TABEL DATA PENGAMATAN PENELITIAN LABORATORIUM Bukaaan = 60^o(-), Waktu = 60 menit Model Tipe : Ambang Baja

JUDUL TESIS : STUDI PENGARUH VARIASI BANGUNAN TERHADAP AGRADASI DAN DEGRADASI DASAR SUNGAI
 PENELITI : ABDUL RAFI UDDIN RASYID
 LOKASI PENELITIAN : LAB. SUNGAI FAK. TEKNIK UNHAS MAKASSAR

Hari / Tgl Pengambilan Data : Sabtu , 15/12/2012 Q = 0,0091 m³/dtk T = 26 °C

No.	Lokasi Pengukuran / Pias	Kecepatan (V) FloWatch (m/det)			No	Tinggi Muka Air	Mistar / Meter (cm)			
		Kiri	Tengah	Kanan			Kiri	Tengah	Kanan	
1	Hulu	0.1	0.1	0.1	1	Hulu	P1	9.6	9.6	9.6
2	P6	0.1	0.1	0.1	2		P6	10.4	10.2	10
3	P11	0.1	0.1	0.1	3		P11	10.4	10	10
4	Tengah	0.1	0.1	0.1	4	Tengah	P16	10.3	10.2	10.2
5	P21	0.1	0.1	0.1	5		P21	10.4	10.5	10.3
6	P26	0.1	0.1	0.1	6		P26	11	11	11
7	P31	0.1	0.1	0.1	7		P31	12	11.9	12
8	Diatas Ambang P32	0.6	0.6	0.6	8	Diatas Ambang P32		4	4	4
9	Disamping Ambang Hilir 32 a	0.9	0.9	0.9	9	Disamping Ambang Hilir 32 a		6	6	6
10	32b	1.1	1.1	1.1	10		32b	10	10	10
11	Hilir	0.1	0.1	0.1	11	Hilir	P33	32	32.5	32
12	P37	0.4	0.4	0.4	12		P37	4.5	4	4.5
13	P42	0.4	0.4	0.4	13		P42	3.5	3.5	4
14	P47	0.5	0.5	0.5	14		P47	3.5	3.5	3.5

No pias (stasion)	Elevasi Titik (cm) kedalaman gerusan										
	1	2	3	4	5	6	7	8	9	10	11
1	19.5	19.8	19.6	19.5	19.5	19.5	19.6	19.6	19.5	19.5	19.3
2	19.5	19.4	19.5	19.5	19.7	19.6	19.5	19.6	19.6	19.5	19.9
3	19.3	19.2	19.2	19.4	19.5	19.4	19.4	19.5	19.5	19.6	19.7
4	19.8	19.5	19.2	19.2	19.3	19.4	19.5	19.4	19.6	19.6	19.9
5	19.8	19.6	19.6	19.4	19.4	19.4	19.6	19.6	19.6	19.5	19.8
6	19.8	19.8	19.7	19.6	19.6	19.8	19.9	19.8	19.7	19.8	19.8
7	19.9	19.9	19.9	19.8	19.8	19.7	19.7	19.8	19.8	19.8	19.7
8	20	20	20	20	20	20	19.9	19.8	20	20.2	20.2
9	20	20	20	20.1	20.1	20.1	20.2	20.2	20	20.1	20
10	20	20.1	20.1	20.1	20	20	20	20	20	19.9	19.9
11	19.9	20.1	20	20	20.1	20.1	20.2	20.1	20.2	20.2	20.2
12	19.9	19.9	20	19.9	20.1	20.2	20.2	20.2	20.1	20.2	20.1
13	19.8	19.8	19.9	20	20	20.1	20.1	20.1	20.2	20.2	20.2
14	19.8	19.9	19.8	19.8	19.9	20	20	20	20	20.1	20.1
15	19.8	19.8	19.7	19.6	19.7	19.7	19.6	19.7	19.6	19.6	19.5
16	19.8	19.7	19.7	19.6	19.6	19.6	19.6	19.5	19.5	19.4	19.5
17	19.6	19.6	19.6	19.6	19.8	19.8	19.8	19.7	19.6	19.8	19.6
18	19.8	19.8	19.9	19.9	20	20.1	20.2	20.2	20.3	20.4	20.2
19	19.9	19.9	19.9	19.9	20	20	20.2	20.2	20.2	20.2	20.1
20	19.6	19.7	19.8	19.9	20	20	20	20.1	20.2	20.3	20.4
21	19.8	19.9	19.9	20	20	20	20.2	20.2	20.1	20	20.1
22	20	20	19.9	19.9	20	20	19.9	20	20	19.9	20.1
23	20.3	20.4	20.4	20.3	20.3	20.3	20.2	20.2	20.3	20.2	20.2
24	20	20	20.1	20	20.1	20	20	20.1	19.9	20.1	19.9
25	19.6	19.6	19.7	19.8	19.8	19.8	19.9	19.9	19.9	20	19.9
26	19.8	19.9	19.9	19.9	19.9	20	19.9	20	19.9	19.8	19.6
27	19.9	20	20	20	20	19.9	19.9	19.8	19.8	19.8	19.8

No pias (stasion)	Elevasi Titik (cm) kedalaman gerusan										
	1	2	3	4	5	6	7	8	9	10	11
28	20	20	20	19.9	19.9	19.9	19.8	20	19.9	19.9	19.8
29	20.4	20.2	20.1	20.1	19.7	19.7	19.7	19.6	19.6	19.7	19.5
30	20.3	20.2	20	19.9	19.8	19.7	19.6	19.8	19.7	19.5	19.7
31	20.5	20.3	20.1	20.1	20.1	19.9	19.9	19.9	19.9	19.9	19.9
32	0	0	0	0	0	0	0	0	0	0	0
33	52.5	51.8	51.4	51	50.7	50.5	50.3	49.5	49.6	50	49.9
34	43.7	43.4	43	43.6	43.5	42.5	42.4	42.2	42	42.1	42.2
35	33.5	30.5	34	33.9	33.9	33.7	33.3	33.2	33	33.2	33.5
36	27.3	26.5	26.2	26.2	26.1	25.8	25.3	25.1	25.3	26	27.5
37	26.1	24.1	23.5	23.7	23.5	23.6	23.5	23.7	23.8	25	25.7
38	25.5	24.1	23.7	23.2	23	23.1	23.1	24.1	24.2	24.8	25
39	24.4	24.6	24.5	24.5	24.5	23	23.3	23.5	24.3	24.2	24.4
40	24.5	23.9	24.1	23.6	23.4	23.2	23.3	25.5	24	24.1	24.1
41	24.1	24	24.1	23.7	23.6	23.5	23.4	23.6	23.4	23.5	24.2
42	23.8	24.2	23.9	23.9	23.9	24	24	24	24.1	24.1	24.1
43	23.9	23.8	23.9	23.9	23.9	24	24	24.1	24.1	24.1	23.9
44	24.1	23.9	23.9	23.8	23.9	23.9	24	24	24	24	24.1
45	24.4	24.2	24.2	23.6	23.8	24.2	24.1	24.1	24	24.2	24.1
46	24.5	24.4	24.2	24.1	24.1	24.1	24.3	24.5	24.3	24.4	24.3
47	25	25.3	24.6	24.7	24.7	25	24.5	24.8	24.8	24.7	20.9

TABEL DATA PENGAMATAN PENELITIAN LABORATORIUM Bukaan = 75° (-), Waktu = 30 menit Model Tipe : Ambang Baja

JUDUL TESIS : STUDI PENGARUH VARIASI BANGUNAN TERHADAP AGRADASI DAN DEGRADASI DASAR SUNGAI
 PENELITI : ABDUL RAFI UDDIN RASYID
 LOKASI PENELITIAN : LAB. SUNGAI FAK. TEKNIK UNHAS MAKASSAR

Hari / Tgl Pengambilan Data : Ahad , 16/12/2012 Q = 0,0093 m³/dtk T = 26 °C

No.	Lokasi Pengukuran / Pias	Kecepatan (V) FloWatch (m/det)			No	Tinggi Muka Air	Mistar / Meter (cm)			
		Kiri	Tengah	Kanan			Kiri	Tengah	Kanan	
1	Hulu	0.1	0.1	0.1	1	Hulu	P1	10.3	10.2	10.2
2	P6	0.1	0.1	0.1	2		P6	10.9	10.8	10.7
3	P11	0.1	0.1	0.1	3		P11	10.7	10.4	10.2
4	Tengah	0.1	0.1	0.1	4	Tengah	P16	10.9	10.8	10.7
5	P21	0.1	0.1	0.1	5		P21	11.1	10.9	10.8
6	P26	0.1	0.1	0.1	6		P26	11.4	11.4	11.4
7	P31	0.1	0.1	0.1	7		P31	11.9	11.8	12
8	Diatas Ambang P32	0.6	0.6	0.6	8	Diatas Ambang P32		4.7	4.7	4.7
9	Disamping Ambang Hilir 32 a	0.9	0.9	0.9	9	Disamping Ambang Hilir 32 a		6.2	6.2	6.2
10	32b	1.1	1.1	1.1	10	32b		10	10	10
11	Hilir	1.1	1.1	1.1	11	Hilir	P33	31	31.2	30.5
12	P37	0.4	0.4	0.4	12		P37	4.5	4.5	4.2
13	P42	0.5	0.5	0.5	13		P42	4	4.2	4
14	P47	0.6	0.6	0.6	14		P47	4	4.2	4.2

No pias (stasion)	Elevasi Titik (cm) kedalaman gerusan											
	1	2	3	4	5	6	7	8	9	10	11	
1	19.5	19.5	19.6	19.7	19.8	19.9	19.9	19.8	19.7	19.9	19.9	19.9
2	19.6	19.5	19.6	19.9	19.9	20.1	19.8	19.7	19.6	19.6	19.6	19.7
3	19.6	19.5	19.4	19.5	19.5	19.5	19.6	19.6	19.5	19.4	19.4	19.4
4	19.5	19.9	19.8	19.6	19.7	19.9	19.8	19.7	19.7	19.8	19.8	19.8
5	19.6	19.6	19.6	19.7	20	19.8	19.8	19.7	19.7	19.8	19.8	19.8
6	19.8	19.8	19.8	19.8	19.8	20	20	19.8	19.8	19.8	19.8	19.8
7	19.9	20	20	19.8	19.8	19.7	19.7	19.7	19.8	19.8	19.8	19.9
8	20	20.1	20.1	20	20	20	20.1	20	20.2	20.3	20.5	20.5
9	20.1	20	20	20	20	20	20.1	20	20.1	20.2	20.2	20.2
10	19.9	20	20	20	20	20.1	20.2	20	20	20.1	20.3	20.3
11	20	20.2	20.2	20.3	20.3	20.2	20.3	20.3	20.2	20.4	20.4	20.4
12	19.8	19.9	20	20	20.2	20.1	20.2	20.3	20.3	20.3	20.3	20.3
13	19.6	19.8	19.9	20	20.1	20.1	20.2	20.3	20.3	20.3	20.5	20.5
14	19.6	19.8	19.9	19.9	20	20.1	20.3	20.2	20.1	20.2	20.3	20.3
15	19.7	19.7	19.8	19.8	19.9	19.9	19.9	20.1	20	20	20	20
16	19.7	19.7	19.8	19.7	19.8	19.9	19.8	19.8	19.6	19.5	19.1	19.1
17	19.7	19.7	19.7	19.6	19.8	19.8	20	20	19.9	19.9	19.9	19.9
18	19.8	20	20	20.1	20.1	20.2	20.2	20.4	20.2	20.3	20.5	20.5
19	20.5	20.1	20.2	20.1	20.2	20.4	20.3	20.3	20.5	20.3	20.5	20.5
20	19.6	19.8	19.9	19.9	20	20.1	20.4	20.3	20.2	20.4	20.3	20.3
21	19.8	19.9	20	20	20.1	20	20.1	20.2	20.3	20.1	20	20
22	19.9	19.9	20	20	20.1	20	20.2	20	20	20	20.2	20.2
23	20	20.3	20.4	20.4	20.3	20.4	20.5	20.4	20.5	20.2	20.1	20.1
24	20	20	20	20	20.1	20.1	20.1	20.1	20.1	20.1	20	20
25	19.8	19.7	19.7	19.8	19.8	19.8	19.8	19.9	19.9	20	20	20
26	19.9	19.9	19.9	19.9	20	20	19.9	20	20	20	19.9	19.9
27	20.1	19.9	19.9	19.9	19.9	19.9	19.9	20	19.8	19.9	20	20

No pias (stasion)	Elevasi Titik (cm) kedalaman gerusan										
	1	2	3	4	5	6	7	8	9	10	11
28	19.9	19.9	19.9	20	19.9	19.9	19.9	20	20.1	20	20.1
29	20.2	20	20	19.9	19.9	19.9	19.9	20	20	20	20.1
30	20.3	19.9	19.8	19.7	19.6	19.7	19.8	19.8	19.8	19.9	19.9
31	20.4	20.1	20.1	20.1	19.8	19.8	19.9	19.9	19.9	19.9	20
32	0	0	0	0	0	0	0	0	0	0	0
33	51	50.9	50.6	50.4	49.8	49.1	48.6	47.8	47.9	48	48.3
34	44	43.4	42.4	42.1	42	40.9	41.2	41.1	40.6	40.4	40.6
35	33.8	34	33.6	33.6	32.7	33.4	32.9	32.6	32	31.9	32.8
36	26	24.6	23.6	23.8	24.1	24.1	24	23.9	24	25.2	26.5
37	24.4	22.9	22.1	22	22.1	22.1	22.4	22.3	22.5	23.5	25.4
38	23.1	22.8	22.6	21.6	21.9	21.9	22	22.2	23.2	23.6	24.5
39	22.4	22.3	22.6	22	21.8	21.6	22.1	22.6	22.3	22.6	22.6
40	22.6	22.3	22.6	23	22.3	22.1	22.6	22.5	22.4	22.5	22.3
41	23	22.4	22.3	22.5	22.4	22.4	22.9	22.5	22.6	22.5	22.7
42	23	22.6	22.9	22.1	22.7	23.7	23.5	23.5	22.9	22.5	22.9
43	23.1	23.2	22.9	23	23.1	23.1	22.9	23	22.8	22.8	23
44	22.7	23.1	23.2	22.8	22.9	22.9	22.9	23.6	23.2	23	23
45	23.2	23.2	22.9	22.8	22.6	23	23	22.5	22.6	22.9	22.1
46	23.9	23.2	23.3	22.9	23.4	23.1	23.1	23.4	23	23.5	22.5
47	24.5	24.3	23.9	23.4	23.3	23.1	23.1	22.9	23	23.2	25.5

TABEL DATA PENGAMATAN PENELITIAN LABORATORIUM Bukan = 75° (-), Waktu = 60 menit Model Tipe : Ambang Baja

JUDUL TESIS : STUDI PENGARUH VARIASI BANGUNAN TERHADAP AGRADASI DAN DEGRADASI DASAR SUNGAI
 PENELITI : ABDUL RAFI UDDIN RASYID
 LOKASI PENELITIAN : LAB. SUNGAI FAK. TEKNIK UNHAS MAKASSAR

Hari / Tgl Pengambilan Data : Ahad , 16/12/2012 Q = 0,0093 m³/dtk T = 26 °C

No.	Lokasi Pengukuran / Pias	Kecepatan (V) FlowWatch (m/det)			No	Tinggi Muka Air	Mistar / Meter (cm)			
		Kiri	Tengah	Kanan			Kiri	Tengah	Kanan	
1	Hulu	0.1	0.1	0.1	1	Hulu	P1	10.5	10.5	10.3
2	P6	0.1	0.1	0.1	2		P6	11	11	10.8
3	P11	0.1	0.1	0.1	3		P11	11	10.8	10.5
4	Tengah	0.1	0.1	0.1	4	Tengah	P16	11	11	11
5	P21	0.1	0.1	0.1	5		P21	11.4	11.3	11.1
6	P26	0.1	0.1	0.1	6		P26	11.6	11.8	11.8
7	P31	0.1	0.1	0.1	7		P31	11.3	11	12.4
8	Diatas Ambang P32	0.6	0.6	0.6	8	Diatas Ambang P32		4.5	4.5	4.5
9	Disamping Ambang Hilir 32 a	0.9	0.9	0.9	9	Disamping Ambang Hilir 32 a		7	7	7
10	32b	1.1	1.1	1.1	10	32b		10.8	10.8	10.8
11	Hilir	1.1	1.1	1.1	11	Hilir	P33	32.5	34	31.5
12	P37	0.4	0.4	0.4	12		P37	5.2	5	5.5
13	P42	0.5	0.5	0.5	13		P42	4.5	4.5	5
14	P47	0.6	0.6	0.6	14		P47	4.5	4.3	4.5

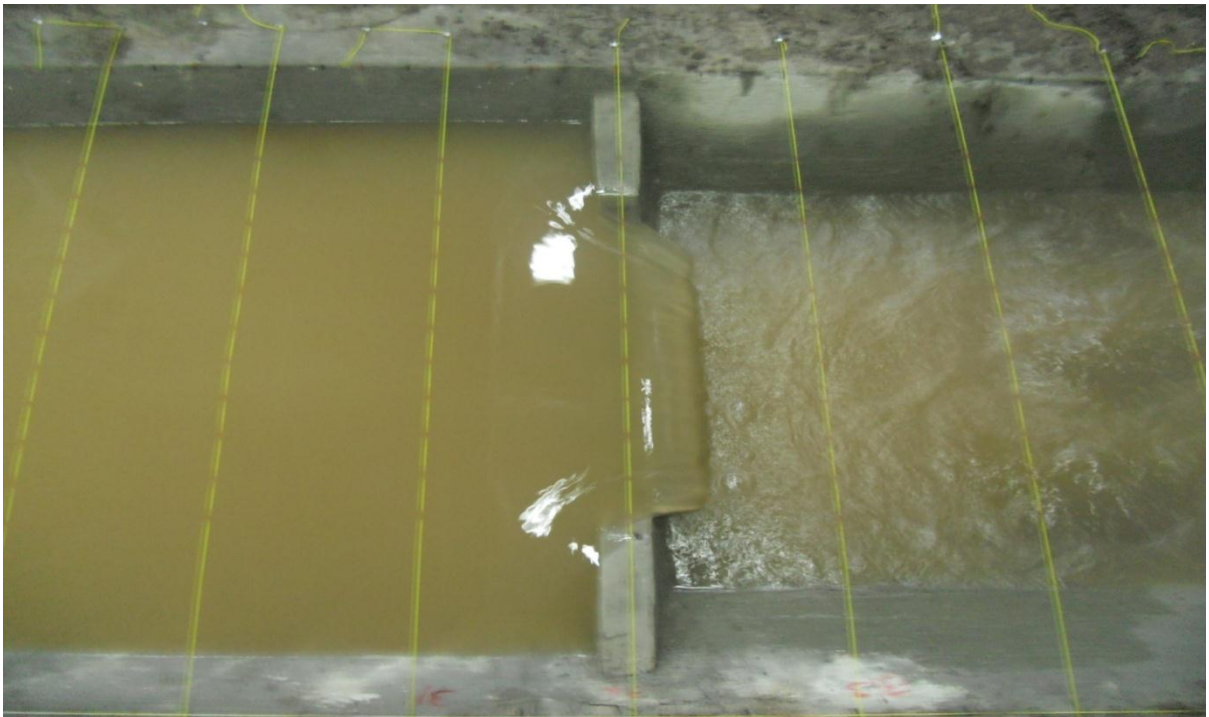
No pias (stasion)	Elevasi Titik (cm) kedalaman gerusan										
	1	2	3	4	5	6	7	8	9	10	11
1	19.5	19.6	19.5	19.6	19.9	19.8	19.6	19.5	19.5	19.7	19.5
2	19.4	19.3	19.3	19.5	19.7	19.7	19.7	19.8	19.6	19.7	19.6
3	19.5	19.4	19.4	19.4	19.4	19.5	19.5	19.5	19.5	19.4	19.4
4	19.5	19.6	19.5	19.6	19.6	19.6	19.6	19.7	19.8	19.8	20
5	19.6	19.6	19.7	19.6	19.6	19.6	19.6	19.6	19.6	19.6	19.6
6	19.7	19.7	19.7	19.8	19.8	19.8	19.6	19.8	19.8	19.8	19.7
7	19.8	19.8	19.8	19.8	19.8	19.7	19.7	19.8	19.9	19.8	19.7
8	20	20	20	20	20	20	20.1	20.1	20.2	20.2	20.3
9	19.9	20	19.9	20	20	20	19.9	20	20	20	20.1
10	20	20	20	20	20	20	20	20	20	20	20.1
11	20	20	20	20	20	20.1	20.1	20.1	20.2	20.2	20.2
12	19.8	19.8	19.9	20	20	20.1	20.1	20.1	20.1	20.2	20.1
13	19.6	19.7	19.9	20	20.1	20.1	20.1	20.1	20.2	20.2	20.3
14	19.7	19.8	19.9	20	20	20.1	20.1	20.1	20.1	20.1	20.2
15	19.6	19.6	19.6	19.6	19.8	19.8	19.8	19.8	19.8	19.9	19.8
16	19.8	19.8	19.7	19.8	19.7	19.8	19.8	19.7	19.8	19.6	19.6
17	19.7	19.8	19.7	19.8	19.8	19.9	20	20	19.9	19.9	19.9
18	19.8	19.9	20	20	20.1	20.1	20.2	20.3	20.3	20.3	20.3
19	20	19.9	20	20.1	20.1	20.2	20.2	20.3	20.3	20.4	20.4
20	19.6	19.7	19.9	20	20	20	20.1	20.1	20.1	20.1	20
21	19.7	19.9	20	20	20	20.1	20.1	20.1	20	20	19.9
22	19.9	19.9	19.9	19.9	20	20	20	20	20	20	19.9
23	20.2	20.2	20.3	20.3	20.3	20.3	20.3	20.2	20.2	20.1	20
24	20	20	20	20	20	20	20	20	19.9	19.9	19.8
25	19.7	19.7	19.8	19.8	19.8	19.9	19.9	19.9	20.1	20	19.9
26	19.9	19.9	20	20	19.9	19.9	20	19.9	20	20	19.9
27	19.8	19.9	19.9	19.9	19.9	19.9	19.9	19.9	19.8	19.8	20

No pias (stasion)	Elevasi Titik (cm) kedalaman gerusan										
	1	2	3	4	5	6	7	8	9	10	11
28	20.1	20.1	19.9	20	20	19.9	19.9	20.2	19.9	19.8	19.9
29	20.2	20.1	19.9	19.9	19.8	19.7	19.7	19.8	19.8	19.9	19.9
30	20.3	20	19.8	19.8	19.6	19.6	19.5	19.5	19.7	19.7	19.8
31	20.2	20.1	20	20	19.9	19.8	19.8	19.8	19.7	19.8	19.8
32	0	0	0	0	0	0	0	0	0	0	0
33	49.7	51.2	50.8	51.5	51.5	51.3	51.5	51	50.4	50.3	49.5
34	46.7	45.6	45.8	45.3	45.5	45	44.5	44.5	43.9	42.9	42.5
35	32.5	32.6	32.7	32.7	32.8	33	32.6	32.5	32.4	32.5	32.5
36	27	25.1	24.8	24.8	24.8	24.9	24.6	24.6	24.6	25	26.7
37	26.5	24.6	24	23.5	23.6	23.7	23.7	23.2	23.5	24.5	26.2
38	26.5	24.6	23.8	23.3	23	22.9	23	23.6	24	24.4	25.6
39	25.5	24	23.7	23.2	22.8	22.6	23.1	23.7	24	23.9	24.8
40	24.9	23.4	24	23.7	23.3	23	23.4	23.4	23.4	23.8	24.3
41	24.1	24	23.8	23.9	23.9	23.9	23.7	23.7	23.6	23.6	24
42	24.1	24.5	23.7	23.8	24.1	23.9	24	23.9	24.1	23.9	24
43	23.9	23.5	23.7	23.9	23.8	24	24	23.7	24.1	23.7	24
44	24.3	23.8	23.7	23.6	23.7	23.9	23.9	23.9	24	23.9	25.9
45	24.5	23.9	23.8	23.9	23.7	24.1	23.9	24	23.8	24.2	24.2
46	24.5	24.4	24.6	23.9	23.7	23.9	23.9	23.9	24.3	23.7	24.1
47	25.1	24.6	24.5	24.5	24	24.2	23.9	23.7	23.8	24	23.5

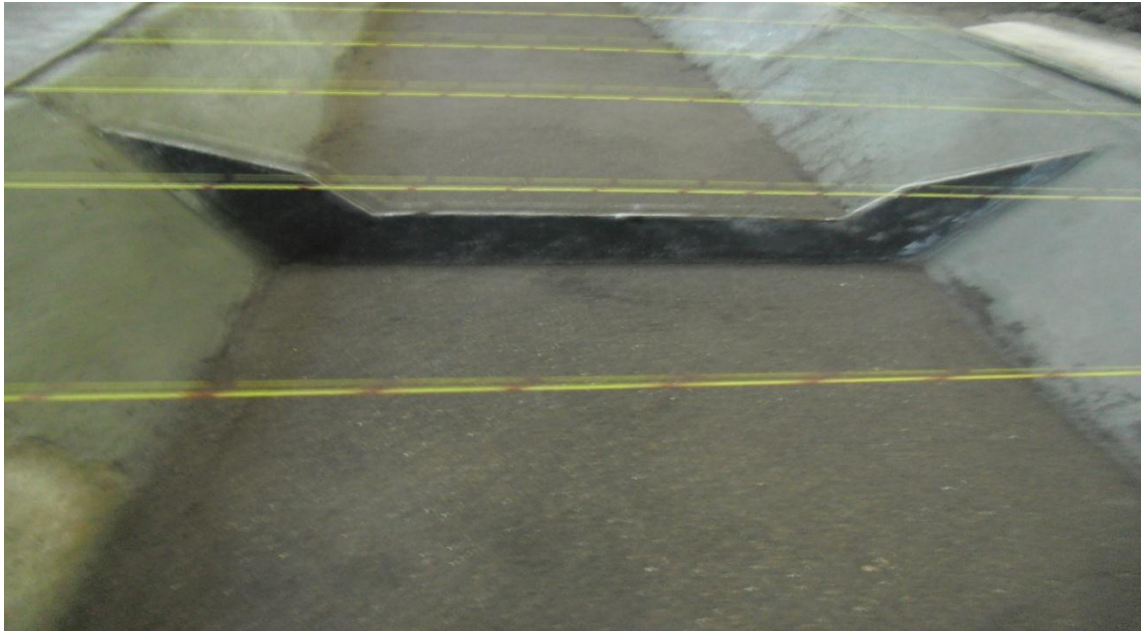
DOKUMENTASI

DOKUMENTASI PENELITIAN

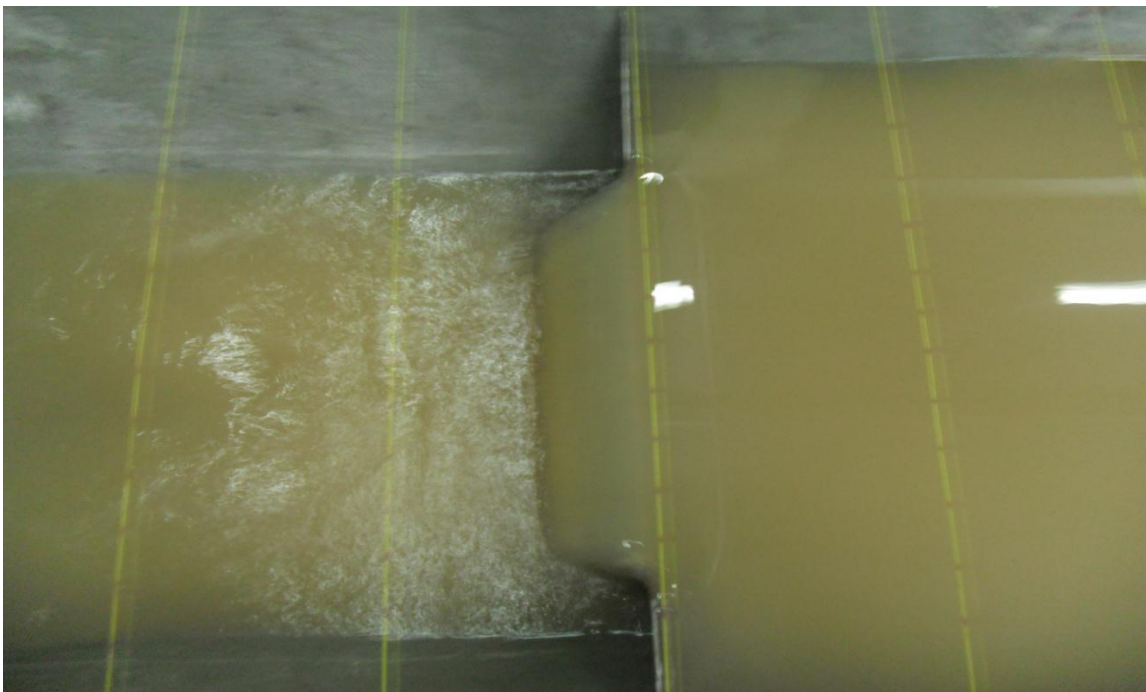
Model Mercu Ambang Rata (beton)



Proses Pengaliran Mercu Ambang Rata



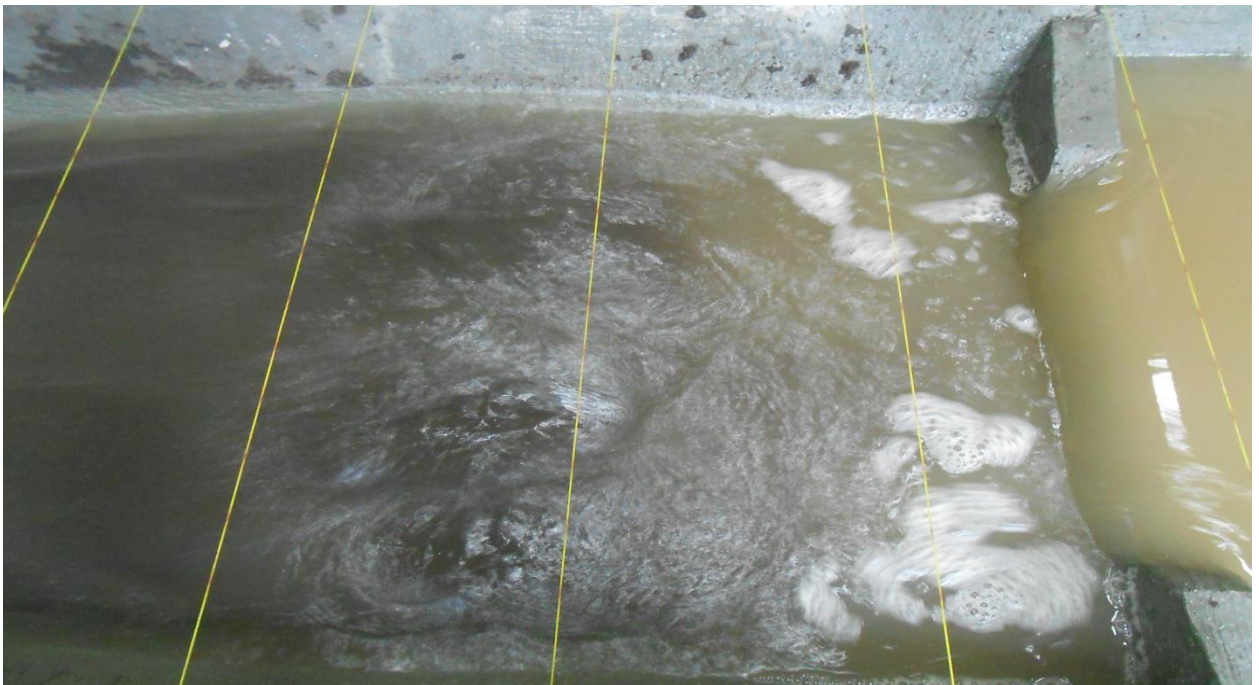
Mercu Ambang Tajam (baja)



Proses Pengaliran Mercu Ambang Taja (baja)



Mercu Ambang Cembung (beton)



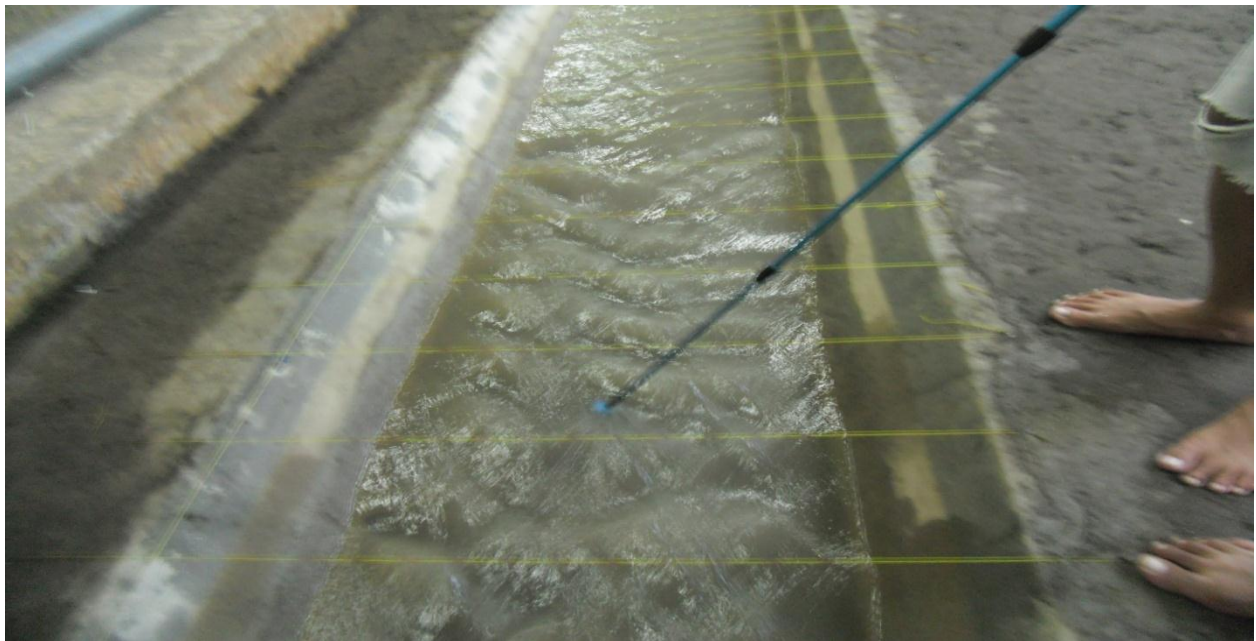
Prorses Pengaliran Ambang Mercu Cembung (beton)



Proses Pengambilan Data



Proses Pengambilan Data



Proses Pengambilan Data



Proses Pengambilan Data



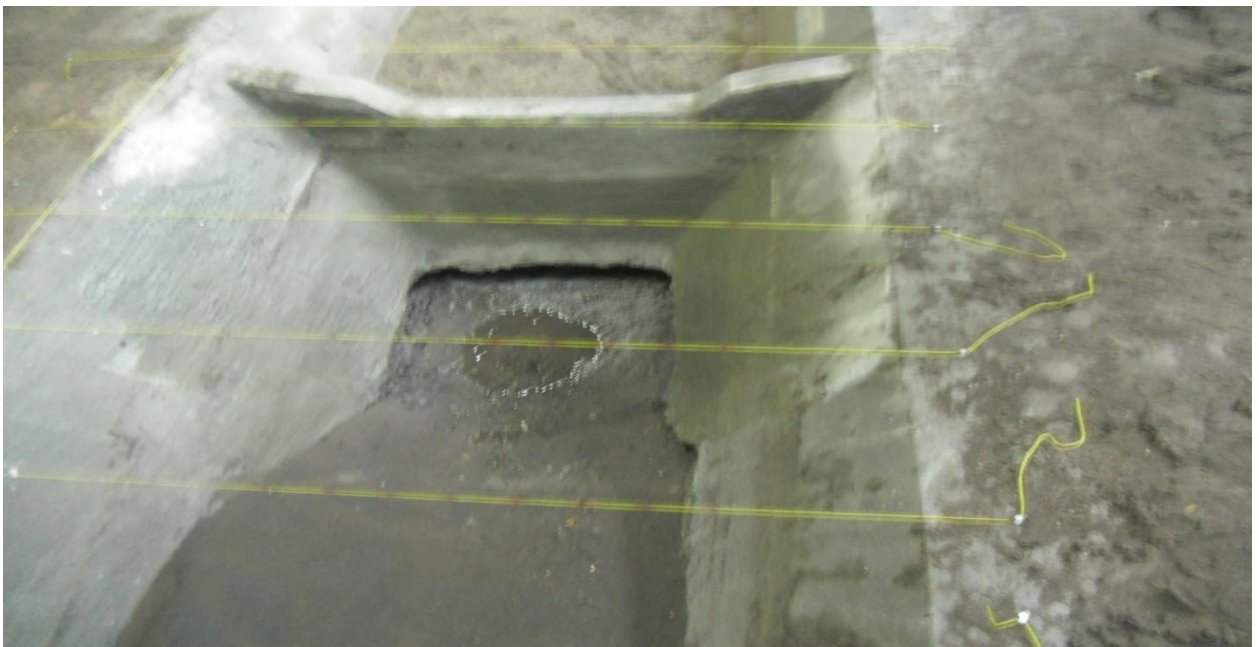
Proses Pembuatan Saluran



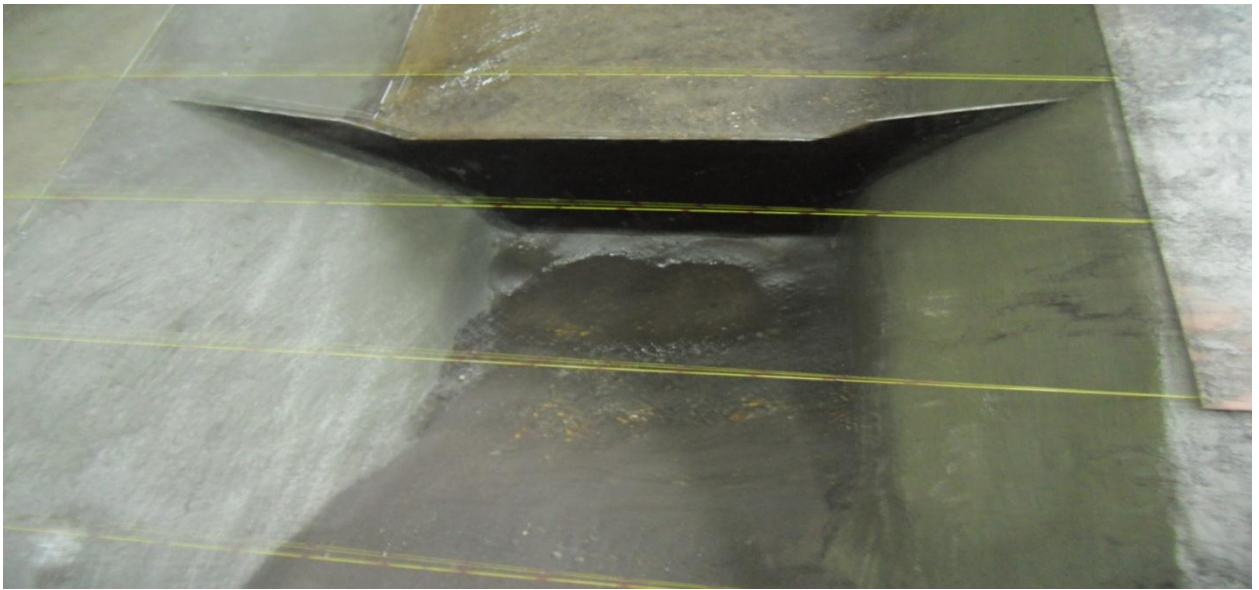
Proses Pengambilan Data



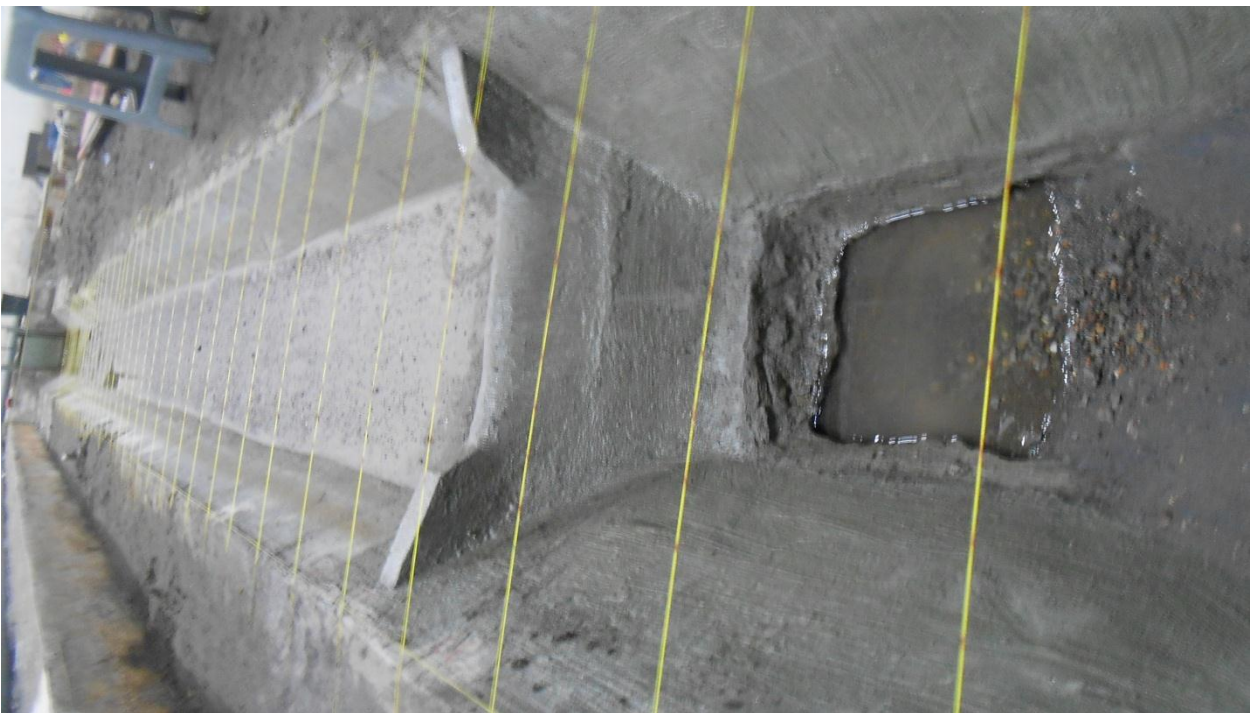
Proses Pembuatan Saluran



Hasil Proses Pengaliran Pada Mercu Ambang Rata (beton)



Hasil Pengaliran Pada Mercu Ambang Tajam (baja)



Hasil Pengaliran Pada Mercu Ambang Cembung (beton)