

DAFTAR PUSTAKA

- Barton, N. R. 1973. Review of a New Shear Strength Criterion for Rock Joints into Duncan C. Wyllie and Christopher W. Mah. *Rock Slope Engineering*. Institute of Mining and Metallurgy. New York. p.62.
- Bieniawski, Z.T. 1979. The Geomechanics Classification in Rock Engineering Applications into Jhon Read and Peter Stacey. *Open Pit Slope Design*. CSIRO: Australia. p.117-118.
- Bieniawski, Z.T. 1989. *Engineering Rock Mass Classifications*. Jhon Wiley and Sons, Inc: Canada. p.60-63.
- Call, R.D. and Nicholas D.E. 2000. Rock Quality Designation into Jhon Read and Peter Stacey. *Open Pit Slope Design*. CSIRO: Australia. p.132.
- Dree, D.U. 1966. Engineering Classification and Index Properties of Intact Rock into Jhon Read and Peter Stacey. *Open Pit Slope Design*. CSIRO: Australia. p.92-93.
- Dree, D.U., R.B. Peck, H. Parker, J. E. Monsees, & B. Schmidt. 1970. Rock Quality Designation into Z.T. Bieniawski, 1989. *Engineering Rock Mass Classifications*. Jhon Wiley and Sons, Inc: Canada. p.37-40.
- Hoek, E. and Bray, J.W. 1981. Rock Slope Engineering 3rd Ed into Duncan C. Wyllie and Christopher W. Mah. *Rock Slope Engineering 4th*. Institute of Mining and Metallurgy. New York. p.36-39.
- ISRM. 1981. Suggested Methods for the Quantitative Description of Discontinuities in Rock Masses into Duncan C. Wyllie and Christopher W. Mah. *Rock Slope Engineering*. Institute of Mining and Metallurgy. New York. p.386-387.
- Palmstrom, A. 1982. The Volumetric Joint Condition a Useful and Simple Measure of the Degree of Rock Jointing Discontinuities in Rock Masses into Duncan C. Wyllie and Christopher W. Mah. *Rock Slope Engineering 4th*. Institute of Mining and Metallurgy. New York. p.50.
- Priest, S.D. and Hudson J.A. 1976. Discontinuity Spacing in Rock into John A. Hudson. *Comprehensive Rock Engineering A Geomechanical Classification for Slopes: Slope Mass Rating M. R. Romana*. ISBN: Oxford England. p.17.
- PT AMNT. 2016. *Geotechnical and Hydrogeological Department*. PT. AMNT: Sumbawa Barat.
- Ragan, Donal. M. 2009. *Structural Geology An Introduction to Geometrical Techniques 4th*. ISBN-13: New York. p. 165-166, 367, 397, 441.
- Read, John and Stacey, Peter. 2009. *Guidelines for Open Pit Slope Design*. CSIRO: Australia. p.9, 226-227, 285, 289, 292-293.

- Riquelme, J. A., Tomas, T., & Abellan, A. 2016. *Characterization of Rock Slopes Through Slope Mass 1 Rating Using 3D Point Clouds*. International Journal of Rock Mechanics and Mining Science. Elsevier Vol 84. p.10.
- Romana, M. 1985. New Adjustment Ratings for Application of Bieniawski Classification to Slopes into John A. Hudson. 1993. *Comprehensive Rock Engineering A Geomechanical Classification for Slopes: Slope Mass Rating M. R. Romana*. p.9-11, 24, 32-33.
- Saranaathan S.E. 2015. *Different Research Techniques and Models in Rock Mass Rating and Slope Stability Analysis*. School of Civil Engineering, SASTRA University: Thanjavur. *Journal of Chemical and Pharmaceutical Research*, 2015, 7. JCPRC5. p.161-162.
- Sddique, T., Masroor M.A., Mondal, M.E.A., & Vishal, V. 2015. *Slope Mass Rating and Kinematic Analysis of Slopes Along the National Highway-58 Near Jonk Rishikesh, India*. Journal of Rock Mechanics and Geotechnical Engineering. CSRME Vol 7. p.601
- Terzaghi, 1965. Spacing of Discontinuities into Duncan C. Wyllie and Christopher W. Mah. 2004. *Rock Slope Engineering 4th*. Institute of Mining and Metallurgy: New York. p.60, 389.
- Umrao, R. K., Singh R.M., & Singh, T.N. 2011. *Stability Analysis of Cut Slopes Using Continuous Slope Mass Rating and Kinematic Analysis in Rudraprayag District, Uttarakhand*. Scientific Research Geomaterials. p.82.
- Wyllie, Duncan C., and Mah C. W. 2004. *Rock Slope Engineering Civil and Mining 4th Edition*. ISBN: London & New York. p.386.
- Zhang, Yahua and Xiaohui Liang. 2015. *Application of SMR and Stereographic Projection Method in the Highway Slope Stability*. International Journal of Science Vol.2 No.5. p.27

LAMPIRAN

LAMPIRAN A

DATA ORIENTASI BIDANG DISKONTINUITAS HASIL *LINE MAPPING*

Sektor 1											
<i>Dip</i>	<i>Dip Direction</i>	<i>Type</i>	<i>Dip</i>	<i>Dip Direction</i>	<i>Type</i>	<i>Dip</i>	<i>Dip Direction</i>	<i>Type</i>	<i>Dip</i>	<i>Dip Direction</i>	<i>Type</i>
70°	306°	J	50°	315°	J	63°	4°	J	70°	195°	J
72°	30°	J	65°	109°	J	40°	159°	F	30°	304°	J
50°	12°	J	74°	329°	J	28°	330°	V	75°	228°	J
60°	254°	J	45°	47°	J	45°	330°	J	40°	57°	VN
50°	54°	J	80°	45°	J	75°	35°	V	35°	235°	F
60°	235°	F	35°	353°	J	60°	252°	J	30°	336°	J
55°	50°	J	80°	257°	J	80°	248°	J	60°	244°	J
35°	4°	J	70°	48°	J	28°	30°	J	37°	30°	J
60°	242°	J	25°	30°	VN	60°	257°	J	72°	270°	J
38°	27°	J	70°	284°	J	46°	62°	J	35°	325°	J
70°	254°	J	45°	290°	VN	75°	55°	J	70°	238°	J
52°	340°	J	65°	270°	J	60°	257°	J	55°	60°	J
55°	316°	J	47°	55°	J	30°	37°	J	60°	40°	J
45°	20°	J	68°	53°	J	74°	258°	J	30°	10°	J
70°	268°	J	66°	264°	J	30°	65°	J	38°	342°	J
55°	60°	J	60°	68°	J	70°	255°	J	40°	298°	J
57°	288°	J	48°	341°	J	35°	58°	J	78°	257°	J
50°	69°	J	75°	53°	J	70°	265°	J	40°	309°	J
45°	327°	J	72°	226°	S	45°	345°	J	20°	68°	J
65°	356°	J	60°	284°	J	68°	55°	J	65°	262°	J
76°	285°	J	40°	329°	J	35°	70°	J	70°	270°	J
55°	65°	J	52°	46°	J	70°	263°	J	30°	28°	J
28°	227°	F	54°	280°	S	45°	65°	J	60°	60°	J
68°	345°	J	35°	346°	VN	70°	266°	J	78°	280°	J
60°	282°	J	60°	275°	J	40°	278°	J	50°	30°	J
60°	254°	F	64°	58°	J	75°	255°	J	50°	57°	J
50°	35°	J	66°	44°	J	40°	285°	J	75°	267°	J
34°	20°	J	85°	45°	J	35°	65°	J	70°	316°	J
60°	240°	F	82°	33°	J	74°	75°	J	50°	35°	J
70°	276°	J	66°	72°	J	75°	250°	J	75°	249°	J
55°	37°	J	57°	71°	J	80°	257°	J	76°	218°	F
42°	320°	J	60°	265°	J	75°	20°	F	50°	51°	J
50°	52°	J	85°	89°	J	65°	285°	J	20°	210°	J
60°	289°	J	30°	338°	J	41°	75°	S	54°	53°	J
45°	330°	J	75°	284°	J	40°	25°	J	80°	212°	J
50°	54°	J	82°	352°	J	65°	215°	F	35°	36°	J
65°	356°	J	70°	264°	J	30°	350°	J	32°	190°	J
66°	246°	J	48°	328°	J	50°	244°	J	33°	52°	J

<i>Dip</i>	<i>Dip Direction</i>	<i>Type</i>	<i>Dip</i>	<i>Dip Direction</i>	<i>Type</i>	<i>Dip</i>	<i>Dip Direction</i>	<i>Type</i>	<i>Dip</i>	<i>Dip Direction</i>	<i>Type</i>
48°	76°	J	80°	350°	J	65	7°	J	75°	240°	J
56°	301°	J	60°	334°	J	75	83°	J	40°	270°	J
40°	325°	J	66°	313°	J	50	45°	J	70°	255°	J
73°	55°	J	86°	8°	F	80	64°	J	50°	235°	F
70°	330°	J	74°	158°	F	30	275°	J	76°	238°	J
60°	28°	J	48°	315°	J	70	253°	J			

Sektor 2

<i>Dip</i>	<i>Dip Direction</i>	<i>Type</i>	<i>Dip</i>	<i>Dip Direction</i>	<i>Type</i>	<i>Dip</i>	<i>Dip Direction</i>	<i>Type</i>	<i>Dip</i>	<i>Dip Direction</i>	<i>Type</i>
60°	70°	J	45°	68°	J	70°	294°	J	25°	50°	J
80°	50°	J	85°	74°	F	30°	88°	J	64°	295°	J
54°	325°	J	32°	65°	J	60°	307°	J	26°	84°	J
56°	74°	J	74°	261°	J	65°	311°	J	73°	292°	J
65°	298°	J	80°	54°	F	82°	104°	S	60°	174°	F
32°	74°	J	76°	116°	J	39°	63°	J	37°	55°	J
73°	52°	J	80°	78°	F	49°	35°	J	35°	5°	J
50°	315°	J	35°	66°	J	79°	50°	F	30°	20°	J
30°	74°	J	70°	303°	J	48°	20°	J	40°	110°	J
35°	330°	J	78°	76°	S	69°	271°	S	80°	110°	J
70°	46°	J	31°	50°	J	40°	8°	J	40°	335°	J
68°	276°	J	80°	95°	J	35°	79°	J	30°	125°	J
60°	294°	J	50°	350°	J	35°	26°	J	74°	320°	J
30°	193°	F	85°	65°	J	30°	115°	J	43°	55°	J
77°	253°	S	41°	20°	J	80°	78°	F	35°	332°	J
40°	50°	J	72°	109°	J	49°	32°	J	50°	65°	J
32°	41°	J	43°	10°	J	90°	75°	J	75°	240°	J
76°	268°	J	76°	101°	J	51°	23°	J	35°	30°	J
76°	271°	J	62°	335°	J	89°	75°	J	50°	30°	J
73°	240°	F	70°	92°	J	35°	19°	J	75°	240°	J
42°	316°	J	34°	79°	J	82°	80°	J	40°	25°	J
84°	56°	F	79°	62°	J	31°	5°	J	72°	276°	J
34°	27°	J	40°	331°	J	80°	251°	J	50°	327°	J
80°	73°	J	82°	337°	J	84°	70°	J	48°	290°	J
80°	67°	J	70°	235°	F	72°	270°	J	75°	282°	J
22°	300°	VN	69°	285°	J	36°	14°	J	55°	50°	J
82°	96°	J	47°	7°	J	77°	80°	J	55°	60°	J
80°	64°	J	34°	35°	J	85°	65°	J	75°	221°	F
80°	74°	F	64°	83°	J	81°	59°	F	70°	233°	F
45°	345°	J	46°	334°	J	35°	70°	J	70°	274°	J
78°	87°	J	76°	81°	S	24°	330°	J	42°	4°	J
41°	351°	VN	36°	336°	J	70°	245°	F	34°	342°	J
77°	288°	J	30°	86°	S	30°	335°	J	35°	46°	J
54°	325°	J	75°	271°	J	75°	277°	J	77°	282°	J
42°	67°	J	69°	281°	J	75°	70°	F	75°	268°	J

<i>Dip</i>	<i>Dip Direction</i>	<i>Type</i>	<i>Dip</i>	<i>Dip Direction</i>	<i>Type</i>	<i>Dip</i>	<i>Dip Direction</i>	<i>Type</i>	<i>Dip</i>	<i>Dip Direction</i>	<i>Type</i>
75°	67°	J	80°	88°	J	55°	80°	J	23°	50°	J
43°	66°	J	40°	40°	J	15°	90°	J	80°	280°	J
71°	113°	J	25°	267°	J	75°	285°	J	24°	65°	J
70°	97°	J	75°	86°	F	70°	290°	J	77°	272°	J
76°	99°	J	25°	60°	J	80°	290°	J			

Sektor 3

<i>Dip</i>	<i>Dip Direction</i>	<i>Type</i>	<i>Dip</i>	<i>Dip Direction</i>	<i>Type</i>	<i>Dip</i>	<i>Dip Direction</i>	<i>Type</i>	<i>Dip</i>	<i>Dip Direction</i>	<i>Type</i>
24°	40°	VN	40°	58°	J	26°	108°	J	30°	95°	J
43°	43°	J	82°	132°	J	27°	48°	J	80°	30°	J
44°	24°	J	70°	160°	J	78°	228°	J	72°	343°	J
70°	160°	F	72°	34°	J	38°	24°	J	34°	340°	J
30°	87°	J	68°	149°	J	84°	277°	J	78°	322°	J
82°	121°	J	35°	50°	J	60°	144°	J	27°	76°	J
40°	319°	J	56°	315°	J	60°	300°	J	75°	126°	J
84°	91°	F	37°	56°	J	33°	28°	J	36°	352°	J
30°	90°	J	70°	280°	J	72°	104°	J	30°	103°	J
41°	347°	J	30°	85°	J	80°	298°	J	30°	97°	J
70°	318°	J	75°	300°	F	66°	102°	J	33°	348°	J
34°	53°	J	35°	63°	J	28°	36°	J	83°	140°	J
60°	305°	J	76°	320°	J	80°	305°	J	45°	40°	J
32°	41°	J	35°	59°	J	62°	308°	J	55°	330°	J
80°	311°	J	77°	350°	J	46°	95°	J	52°	342°	J
32°	330°	J	43°	43°	J	42°	42°	J	50°	52°	J
74°	141°	J	34°	47°	J	30°	36°	J	58°	317°	J
35°	65°	J	40°	315°	J	41°	285°	J	30°	42°	J
75°	308°	J	30°	90°	J	51°	328°	J	75°	310°	J
41°	35°	J	36°	45°	J	28°	56°	J	30°	335°	J
77°	313°	J	37°	62°	J	52°	109°	J	85°	317°	J
30°	74°	J	26°	320°	J	88°	68°	F	30°	0°	J
89°	76°	J	67°	305°	J	62°	301°	J			

Sektor 4

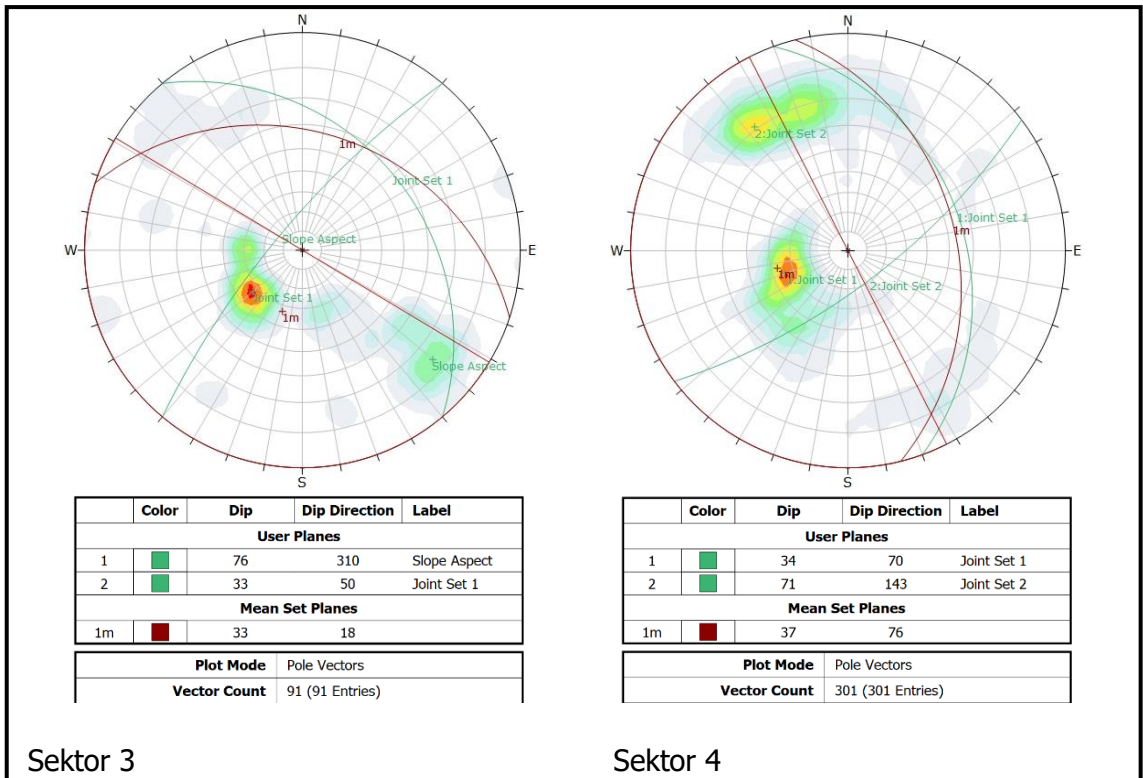
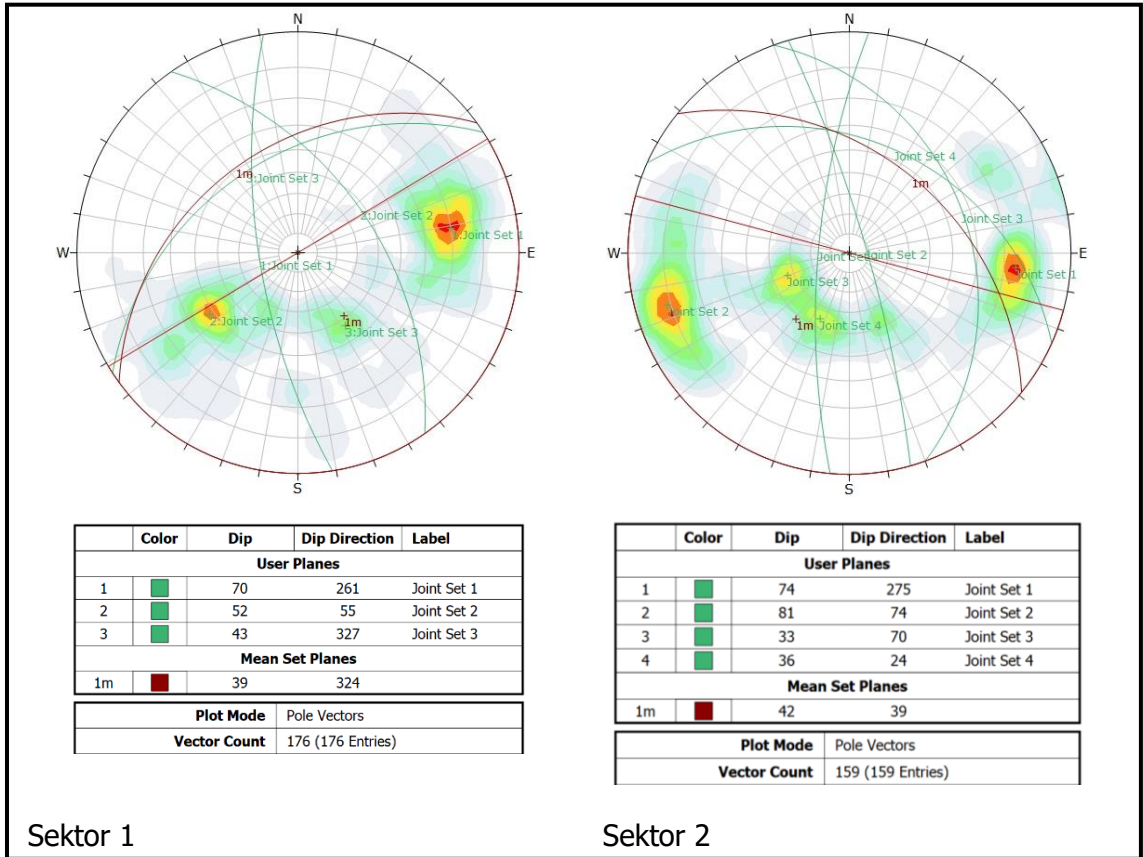
<i>Dip</i>	<i>Dip Direction</i>	<i>Type</i>	<i>Dip</i>	<i>Dip Direction</i>	<i>Type</i>	<i>Dip</i>	<i>Dip Direction</i>	<i>Type</i>	<i>Dip</i>	<i>Dip Direction</i>	<i>Type</i>
80°	127°	J	74°	165°	J	70°	149°	J	30°	5°	J
25°	114°	J	60°	60°	J	30°	75°	J	30°	90°	J
80°	355°	J	70°	166°	J	45°	320°	J	65°	137°	J
75°	315°	J	40°	64°	J	30°	59°	J	87°	124°	J
28°	330°	J	75°	180°	J	70°	330°	J	30°	87°	J
75°	132°	J	40°	51°	J	40°	30°	J	30°	4°	J
70°	140°	J	64°	158°	J	35°	77°	J	35°	84°	J
29°	335°	J	45°	63°	J	66°	322°	J	70°	155°	J
70°	140°	J	72°	180°	J	40°	61°	J	35°	2°	J
63°	253°	J	40°	20°	J	65°	65°	J	55°	250°	F

<i>Dip</i>	<i>Dip Direction</i>	<i>Type</i>	<i>Dip</i>	<i>Dip Direction</i>	<i>Type</i>	<i>Dip</i>	<i>Dip Direction</i>	<i>Type</i>	<i>Dip</i>	<i>Dip Direction</i>	<i>Type</i>
26°	128°	J	54°	185°	F	80°	330°	J	80°	147°	J
89°	97°	F	80°	355°	J	30°	75°	J	35°	82°	J
65°	267°	J	65°	170°	J	70°	175°	J	55°	151°	J
39°	34°	J	40°	85°	J	75°	70°	J	56°	257°	J
80°	135°	F	66°	180°	J	74°	125°	J	82°	330°	J
75°	140°	J	55°	62°	J	35°	72°	J	48°	177°	J
28°	119°	J	67°	185°	J	70°	138°	J	25°	89°	J
26°	117°	J	40°	85°	J	64°	150°	S	65°	158°	J
40°	55°	J	50°	35°	J	64°	298°	S	65°	172°	J
70°	235°	J	68°	165°	J	20°	267°	J	35°	77°	J
76°	312°	J	75°	165°	J	66°	143°	J	65°	158°	J
55°	269°	F	43°	35°	J	42°	133°	J	70°	166°	J
68°	300°	J	47°	22°	J	73°	182°	J	30°	48°	J
25°	105°	J	40°	20°	J	23°	60°	J	70°	160°	J
74°	300°	J	30°	98°	J	67°	154°	J	30°	31°	J
35°	110°	J	65°	212°	J	72°	147°	J	65°	162°	J
30°	15°	J	76°	165°	J	32°	75°	J	25°	57°	J
80°	135°	J	55°	15°	J	67°	148°	J	45°	226°	F
75°	235°	J	52°	15°	J	48°	3°	J	25°	67°	J
65°	317°	J	20°	52°	J	29°	24°	J	86°	142°	J
74°	237°	J	79°	194°	J	29°	136°	J	30°	65°	J
75°	331°	J	40°	16°	J	73°	170°	J	20°	55°	VN
35°	60°	J	70°	200°	J	31°	74°	J	70°	203°	VN
30°	55°	J	58°	14°	J	76°	145°	F	80°	175°	J
70°	167°	J	34°	89°	J	76°	145°	J	75°	343°	J
40°	54°	J	55°	225°	J	31°	64°	VN	22°	78°	J
49°	82°	J	22°	20°	J	66°	250°	J	40°	180°	J
44°	60°	J	70°	357°	J	77°	150°	J	80°	330°	J
37°	324°	J	62°	215°	F	37°	57°	J	65°	170°	J
25°	107°	J	65°	25°	J	70°	163°	J	25°	75°	J
46°	85°	J	35°	31°	J	23°	66°	J	45°	25°	J
74°	345°	J	80°	130°	S	58°	153°	J	80°	185°	J
73°	140°	J	70°	345°	S	72°	156°	J	33°	40°	J
70°	145°	J	62°	200°	S	86°	48°	F	52°	57°	J
25°	325°	J	16°	204°	J	83	162°	J	60°	29°	J
75°	145°	J	50°	70°	J	25°	81°	J	73°	193°	J
76°	145°	J	48°	48°	J	72°	153°	J	62°	45°	J
34°	87°	J	74°	300°	J	70°	188°	J	67°	204°	J
27°	354°	J	70°	156°	J	35°	52°	J	33°	90°	J
40°	90°	J	48°	62°	J	77°	158°	J	60°	28°	J
55°	284°	J	60°	157°	J	41°	48°	J	32°	97°	J
35°	65°	J	50°	55°	J	60°	165°	J	54°	226°	S
35°	75°	J	30°	5°	J	63°	200°	J	50°	35°	J
46°	30°	J	70°	140°	J	77°	335°	CT	55°	175°	J

<i>Dip</i>	<i>Dip Direction</i>	<i>Type</i>	<i>Dip</i>	<i>Dip Direction</i>	<i>Type</i>	<i>Dip</i>	<i>Dip Direction</i>	<i>Type</i>	<i>Dip</i>	<i>Dip Direction</i>	<i>Type</i>
30°	55°	VN	30°	330°	J	65°	164°	J	50°	32°	J
76°	145	J	70°	141°	J	38°	32°	J	30°	95°	J
35°	65°	J	40°	65°	J	60°	174°	J	35°	168°	J
80°	283°	J	32°	66°	J	60°	240°	F	55°	30°	J
70°	135°	J	68°	137°	J	40°	60°	J	72°	196°	J
79°	310°	J	52°	57°	J	62°	171°	J	30°	99°	J
79°	320°	J	30°	328°	J	45°	37°	J	48°	184°	J
30°	65°	VN	75°	170°	J	68°	195°	J	50°	42°	J
64°	152°	J	70°	142°	J	40°	201°	J	54°	204°	F
82°	5°	S	35°	190°	J	67°	44°	J	55°	215°	J
77°	263°	J	65°	148°	J	28°	51°	J	65°	180°	J
41°	59°	J	70°	285°	J	65°	194°	J	80°	185°	J
85°	328°	J	25°	98°	J	50°	36°	J	30°	172°	J
78°	155°	J	70°	287°	J	63°	237°	CT	55°	44v	J
47°	65°	J	50°	50°	J	40°	65°	J	38°	75°	J
85°	20°	F	75°	135°	J	60°	142°	J	50°	40°	J
74°	170°	J	25°	115°	J	30°	99°	J	52°	214°	J
70°	65°	S	30°	10°	J	70°	132°	J	35°	78°	J
84°	243°	S	80°	115°	J	65°	140°	J	50°	55°	J
83°	95°	F	40°	12°	J	25°	27°	J	55°	220°	J
66°	17°	J	85°	11°	F	70°	319°	S	55°	40°	J
47°	61°	J									

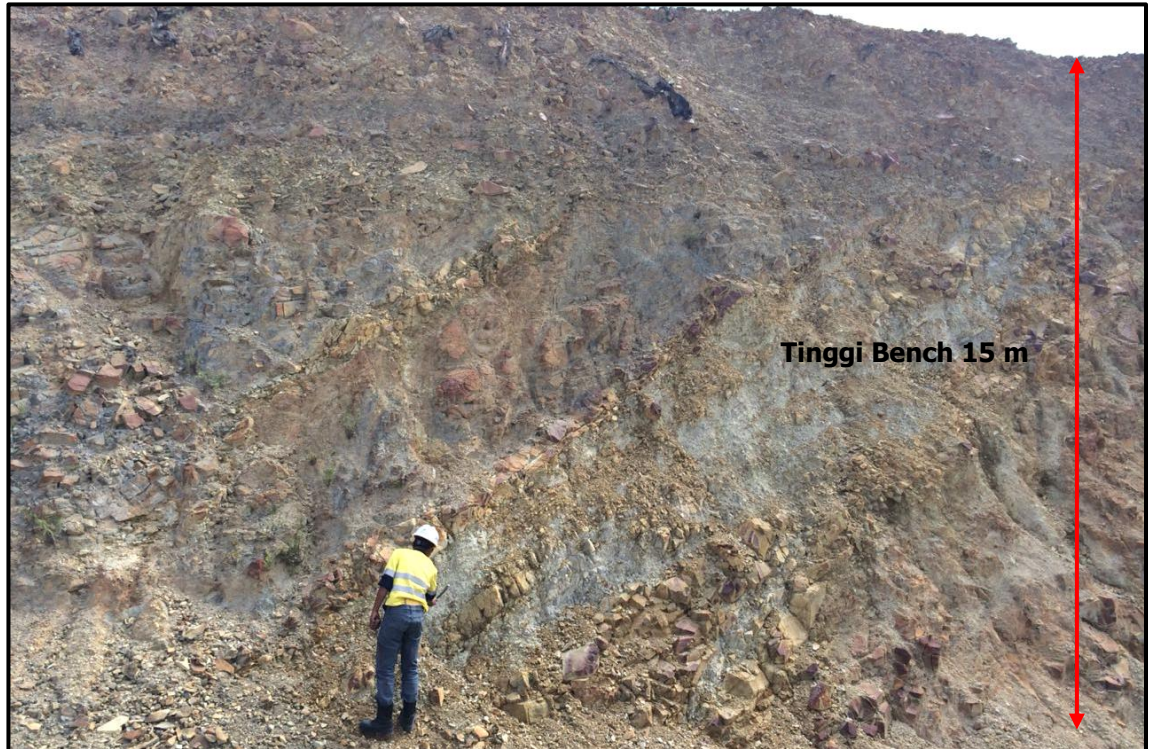
LAMPIRAN B

HASIL PLOT ORIENTASI BIDANG DISKONTINUITAS (*SOFTWARE DIPS 6.0*)



LAMPIRAN C

FOTO KEGIATAN



Proses pengambilan data bidang diskontinuitas dengan metode *line mapping*



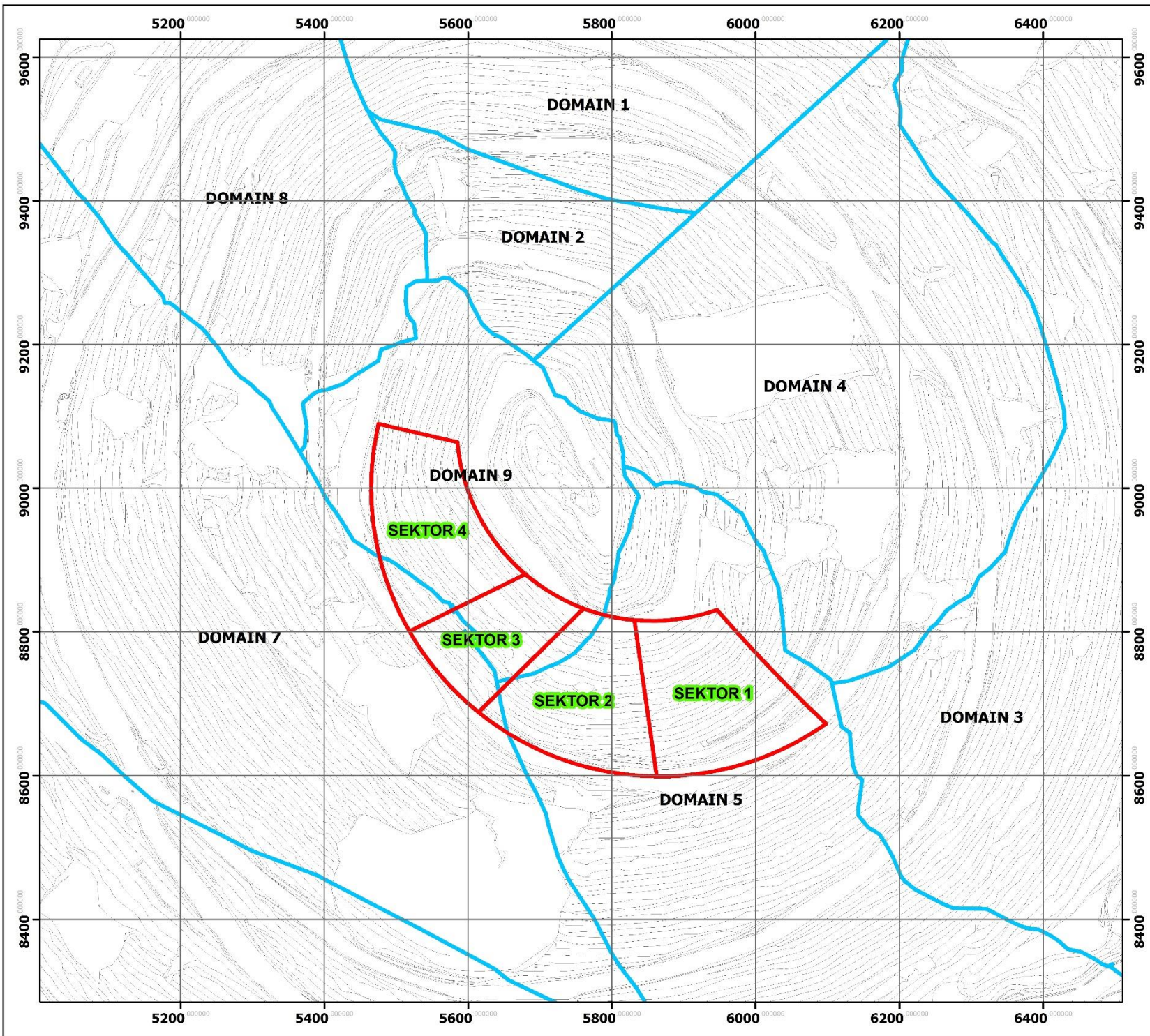
Aktivitas pengukuran bidang diskontinuitas pada Pit Batu Hijau PT AMNT



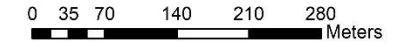
Kondisi aktual lereng daerah penelitian pada Pit Batu Hijau PT AMNT





Salah satu longsoran pada daerah penelitian



**PETA LOKASI PENELITIAN
PT AMMAN MINERAL NUSA TENGGARA
KAB. SUMBAWA BARAT, NUSA TENGGARA BARAT**



LEGENDA

-  : Batas Domain
-  : Sektor Pengukuran Struktur

KETERANGAN

Proyeksi Geografi : Lintang Bujur
Datum Unit : WGS 1984
Koordinat Sistem : WGS 1984 UTM Zone 51 S

SUMBER
DIVISI GEOTEKNIK & HIDROGEOLOGI
PT AMMAN MINERAL NUSA TENGGARA



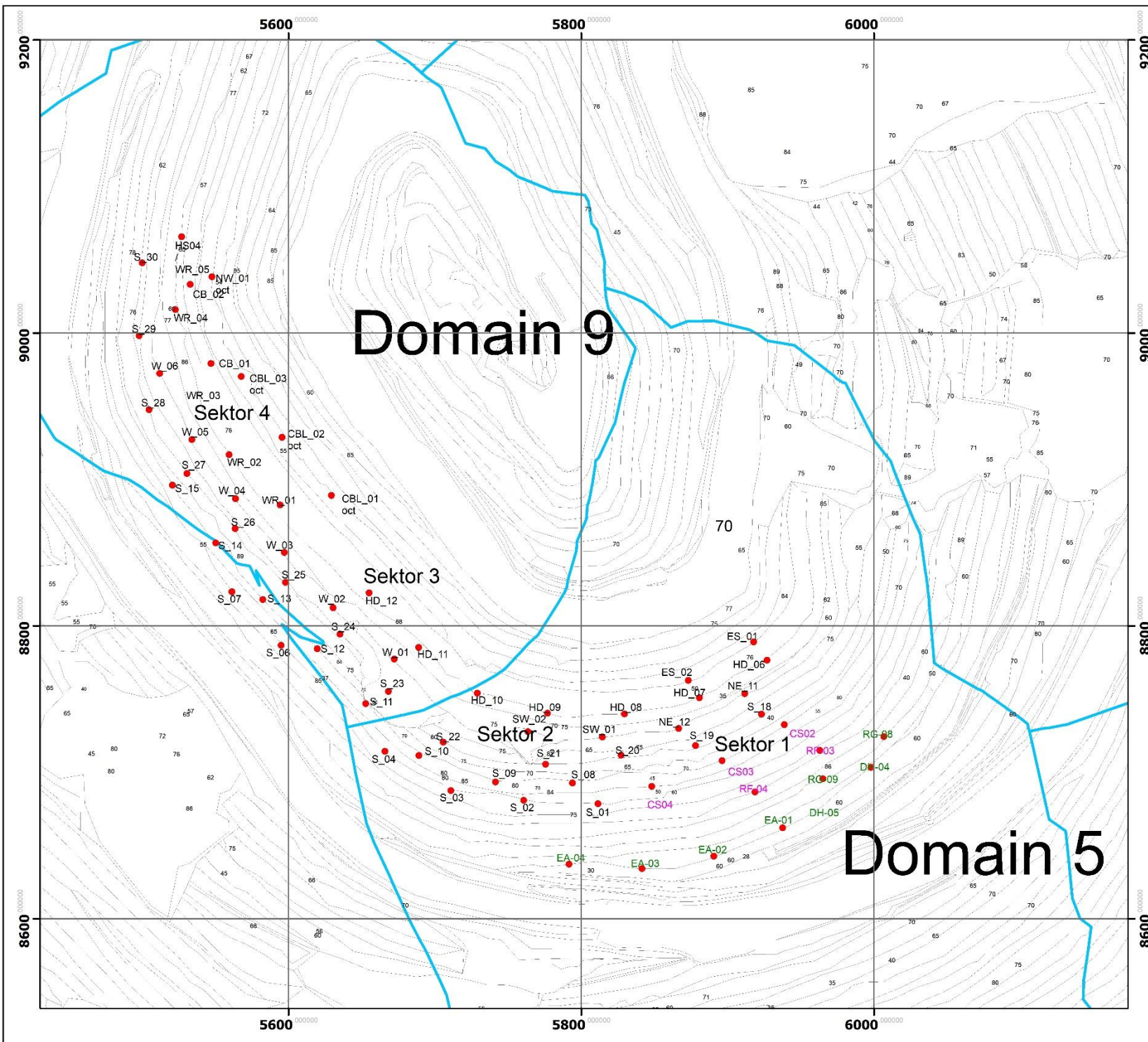
DEPARTEMEN TEKNIK PERTAMBANGAN
FAKULTAS TEKNIK
UNIVERSITAS HASANUDDIN

SKRIPSI

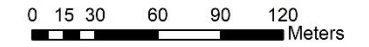
**DESAIN PERKUATAN LERENG MENGGUNAKAN
KLASIFIKASI SLOPE MASS RATING (SMR)**
Studi Kasus : Domain 5 dan Domain 9
Pit Batu Hijau PT Amman Mineral Nusa Tenggara

Reza Denni
NIM. D62114020

PEMBIMBING
UTAMA Dr.Eng. Purwanto, S.T, M.T.
NIP. 19871128 200501 1 002



**PETA LOKASI PENGUKURAN STRUKTUR
PT AMMAN MINERAL NUSA TENGGARA
KAB. SUMBAWA BARAT, NUSA TENGGARA BARAT**



LEGENDA

-  : Batas Domain
-  : Titik Pengukuran Struktur

KETERANGAN

Proyeksi Geografi : Lintang Bujur
Datum Unit : WGS 1984
Koordinat Sistem : WGS 1984 UTM Zone 51 S

SUMBER
DIVISI GEOTEKNIK & HIDROGEOLOGI
PT AMMAN MINERAL NUSA TENGGARA



DEPARTEMEN TEKNIK PERTAMBANGAN
FAKULTAS TEKNIK
UNIVERSITAS HASANUDDIN

SKRIPSI

**DESAIN PERKUATAN LERENG MENGGUNAKAN
KLASIFIKASI SLOPE MASS RATING (SMR)**
Studi Kasus : Domain 5 dan Domain 9
Pit Batu Hijau PT Amman Mineral Nusa Tenggara

Reza Denni
NIM. D62114020

PEMBIMBING
UTAMA
Dr.Eng. Purwanto, S.T, M.T.
NIP. 198/1128 200501 1 002

HAL. 77 LAMPIRAN D2 2021

Lampiran B 10

Kartu Konsultasi Tugas Akhir

JUDUL: Desain Perkuatan Lereng Menggunakan
Klasifikasi Slope Mass Rating (SMR)

(Konsultasi minimal 8 kali)

TANGGAL	MATERI KONSULTASI	PARAF DOSEN
14/06/2021	- Perbaiki diagram alir - Perbaiki BAB I	
18/06/2021	- Perbaiki BAB I - Perbaiki BAB II	
21/06/2021	- Perbaiki BAB II - Perbaiki BAB III	
23/06/2021	- Perbaiki BAB III - Perbaiki diagram alir - Perbaiki BAB IV	
25/06/2021	- Perbaiki BAB I - Perbaiki BAB IV - Perbaiki BAB V	
1/07/2021	- Lengkapi lampiran - Perbaiki BAB IV - Perbaiki diagram alir	
5/07/2021	- Perbaiki abstrak - Lengkapi artikel ilmiah dan poster	
09/07/2021	ACC	