

DAFTAR PUSTAKA

- Andriani, F. D. et al., 2016. Pemodelan Kedepan Geolistrik Resistivitas Menggunakan Metode Beda Hingga (Kasus 2D: Model Lapisan Yang Homogen). *Seminar Nasional Fisika (E-Journal) SNF2016*, Volume 5.
- Bowles, J. E., 1984. *Physical and Geotechnical Properties of Soil*. 2nd ed. United States of America: McGraw-Hill, Inc..
- Craig, R. F., 1987. *Soil Mechanics*. 4th ed. s.l.:Van Nostrand Reinhold (UK).
- Hendrajaya, L. & Arif, I., 1990. *Metode Geolistrik Tahanan Jenis.*, Bandung: ITB.
- Jusi, U., 2015. Analisa Kuat Dukung analisa kuat Dukung Pondasi Bored Pile Berdasarkan Data Pengujian Lapangan (Cone dan N-Standard Penetration Test). *Jurnal Teknik Sipil Siklus*, 1(2), pp. 50-82.
- Legrans, R., 2011. Tinjauan Daya Dukung Pondasi Tiang Pancang Pada Tanah Berlapis Berdasarkan Hasil Uji Penetrasi Standar (SPT). *Tekno Sipil*, 9(56), pp. 28-33.
- Lines, L. R. & Treitel, S., 1984. A Review of Least-Squares Inversion and its Application to Geophysical Problems. *Geophysical Prospecting*, pp. 159-186.
- Loke, M. H., 2000. *Electrical Imaging Survei for Environmental and Engineering*. Penang: s.n.
- Marsh, E., Anderson, E. & Gray, F., 2013. *Nickel-Cobalt Laterites—A Deposit Model*, Virginia: Mineral Deposit Models for Resource Assessment USGS.
- Sikumbang, N., Sanyoto, P., Supandjono, R. & Gafoer, S., 1995. *Peta Geologi Bersistem Indonesia*, Bandung: Pusat Penelitian dan Pengembangan Geologi.
- Struyk, H. J. & Veen, V. D., 1984. *Jembatan*. Jakarta: Pradnya Paramita.
- Supeno, Priyantari, N. & Halik, G., 2008. Penentuan Struktur Bawah Permukaan Daerah Rawan Longsor. *Jurnal ILMU DASAR*, 9(1), pp. 48-55.
- Surono, 2010. *Geologi Lengan Tenggara Sulawesi*. Bandung: Badan Geologi, KESDM.
- Syamsuddin, 2007. *Penentuan Struktur Bawah Permukaan Dangkal Dengan*, Bandung: ITB.

- Telford, W. M., 1990. *Applied Geophysics*. s.l.:Cambridge University Press.
- Tobing, M. S., 2005. *Prospek Bitumen Padat Pulau*, Bandung: Sub Dit Batubara Direktorat Inventarisasi Mineral.
- Wiyana, S. E., Setyarini, J. A. & Prihatiningsih, A., 2018. Kajian Dua Kelompok Data Tanah Dari Hasil Uji Bor Dalam Pada Proyek Jalan Tol JKC. *Jurnal Mitra Teknik Sipil*, 1(1), pp. 205-213.

LAMPIRAN

GWL	DEPTH (m)	CASING	SAMPLE TYPE	SOIL PROFILE	DEPTH (m)	THICKNESS (m)	DESCRIPTION OF SOIL	BLOW PENETRATION EACH 15 cm			SPT = N BLOW N ₁ + N ₂ 30 cm	CONSISTENCY	GRAFIK SPT					RECOVERY (%)	RQD (%)	CORE BOX	
								N ₁	N ₂	N ₃			10	20	30	40	50				60
	41				41.42		KARANG, Berongga, Berwarna putih										100	20			
	42				42.43												100	20			
	43				43.44												100	0			
	44				44.45												100	0			
	45				45.46												100	0			
	46				46.47												100	0			
	47				47.48												100	0			
	48				48.49												100	0			
	49				49.50												100	0			
	50				50.51												100	0			
	51				51.52												100	0			
	52				52.53												100	0			
	53				53.54												100	0			
	54				54.55												100	0			
	55				55.56												100	0			
	56				56.57												100	0			
	57				57.58												100	0			
	58				58.59												100	0			
	59				59.60												100	0			
	60				60.50.3	5.7	BATU LEMPUNG berwarna abu - abu										100	40			
	61				61.62		BATU LEMPUNG berwarna abu - abu	9	25	30/10	60						100	100			
	62				62.63			10	40	10/2	60						100	90			
	63				63.64			20	45	15/3	60						100	90			
	64				64.65			25	50/10		60						100	80			
	65				65.66		END BORING														
	66				66.67																
	67				67.68																
	68				68.69																
	69				69.70																
	70				70.71																
	71				71.72																
	72				72.73																
	73				73.74																
	74				74.75																
	75				75.76																
	76				76.77																
	77				77.78																
	78				78.79																
	79				79.80																

LEGEND :

- SPT
- UDS
- GROUND WATER LEVEL
- CLAY
- SILT
- SAND
- CORAL
- CLAYSTONE
- SILTSTONE
- SANDSTONE
- LIMESTONE
- ANDESITE
- GRAVELL
- GRANITE

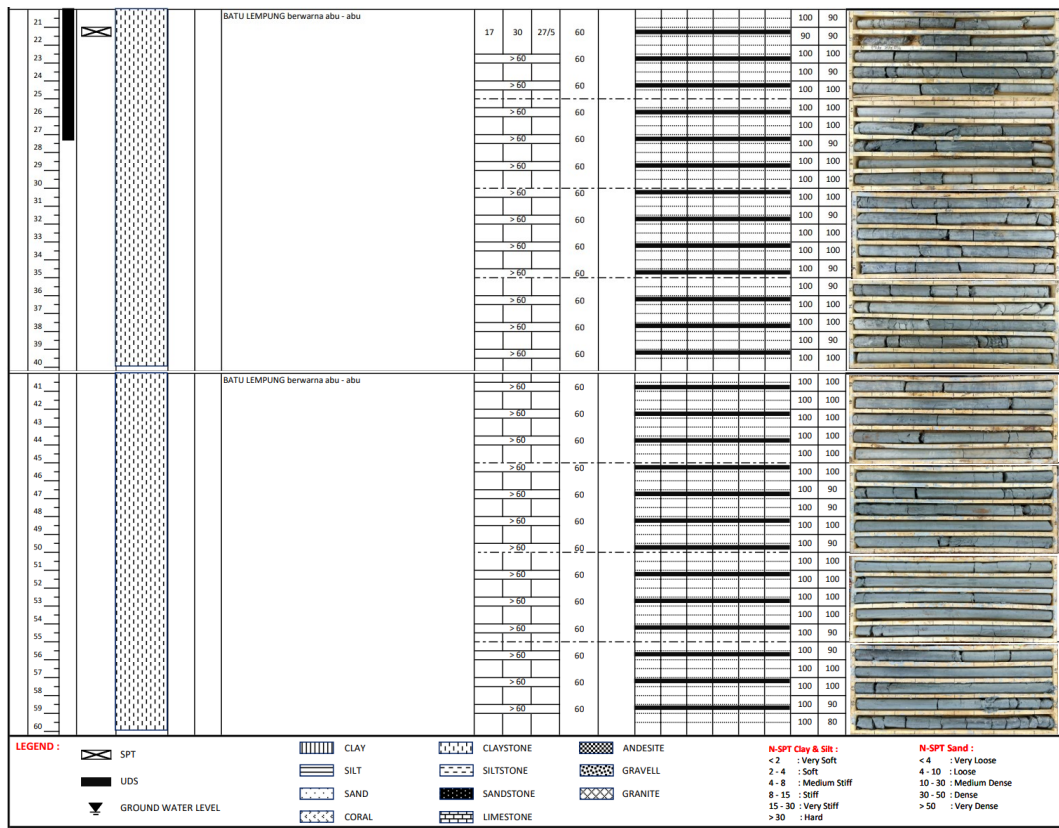
N-SPT Clay & Silt :

- < 2 : Very Soft
- 2 - 4 : Soft
- 4 - 8 : Medium Stiff
- 8 - 15 : Stiff
- 15 - 30 : Very Stiff
- > 30 : Hard

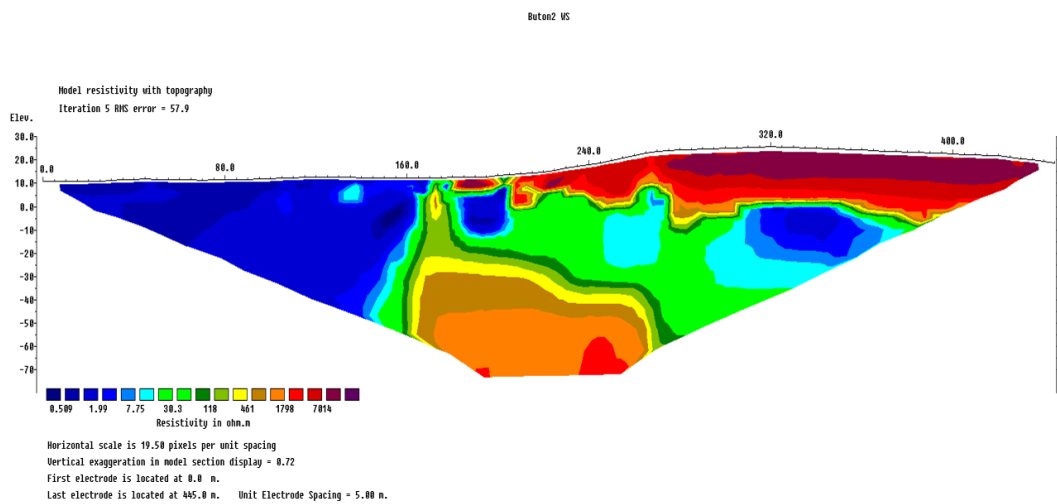
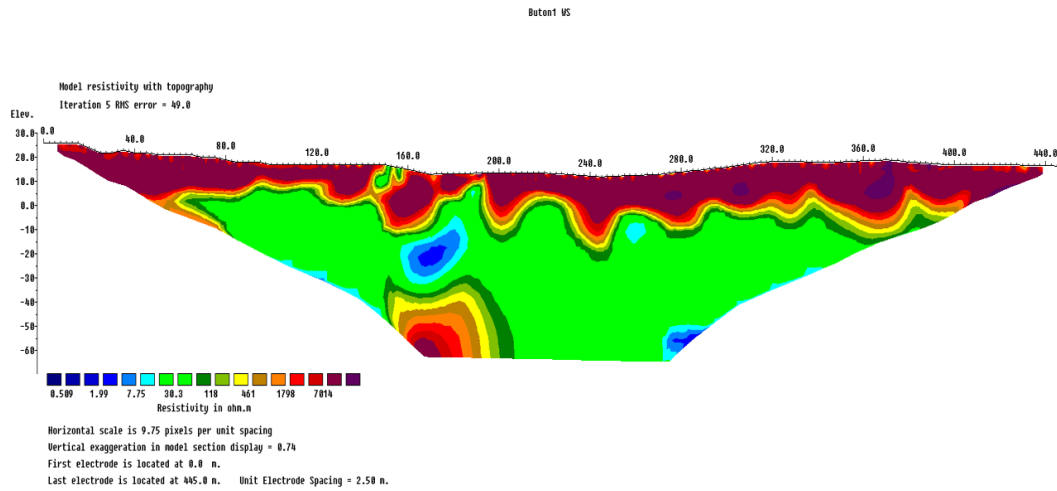
N-SPT Sand :

- < 4 : Very Loose
- 4 - 10 : Loose
- 10 - 30 : Medium Dense
- 30 - 50 : Dense
- > 50 : Very Dense

GWL	DEPTH (m)	CASING	SAMPLE TYPE	SOIL PROFILE	DEPTH (m)	THICKNESS (m)	DESCRIPTION OF SOIL	BLOW PENETRATION EACH 15 cm			SPT = N BLOW N ₁ + N ₂ 30 cm	CONSISTENCY	GRAFIK SPT					RECOVERY (%)	RQD (%)	CORE BOX	
								N ₁	N ₂	N ₃			10	20	30	40	50				60
	1				0		KARANG, Berongga, Berwarna coklat										100	0			
	2				1		KARANG BERPASIR, Berongga, Berwarna putih kecoklatan	3	5	11	16						100	0			
	3				2												100	0			
	4				3	11.7	KARANG BERPASIR, Berongga, Berwarna putih kekuningan	50/15			60						100	50			
	5				4												100	30			
	6				5												100	0			
	7				6			6	12	16	28						100	20			
	8				7			3	6	5	11						100	20			
	9				8			2	3	6	9						100	0			
	10				9												100	50			
	11				10			7	5	12	17						100	0			
	12				11			10	17	16	33						100	30			
	13				12			12	16	20	36						100	60			
	14				13												100	20			
	15				14												100	40			
	16				14.7	45.3	BATU LEMPUNG berwarna abu - abu	9	13	23	36						100	100			
	17				15			10	20	27	47						100	100			
	18				16			11	25	30	55						100	90			
	19				17												100	100			
	20				18			15	27	30/10	60						100	80			



Lampiran 2 : Penampang Geolistrik



Lampiran 2 : Foto Kegiatan



Pengambilan Data bor



Peninjauan Lokasi Rawa



Proses Akuisisi

