

DAFTAR PUSTAKA

- Ahmad Z. D.P. Thambiratnam, A.C.C Tan. 2009. Dynamic Energy Absorption Characteristics of Foam-Filled Conical Tubes Underoblique Impact Loading. University Teknologi Malaysia.
- A. K. Shaik dawood dan S. S. Mohammad Nazirudeen, 2010. *A Development of Technology for making porous metal foams castings*, Jordan Journal of Mechanical and Industrial Engineering, 4(2): 292-299.
- A. Niknejad, M.M. Abedi, G.H. Liaghat, M. Zamani Nejad, Absorbed energy by foam-filled quadrangle tubes during the crushing process by considering the interaction effects, Arch. Civil. Mech. Eng. 15 (2015) 376–391.
- Ashby, M. F., Evans, A., Fleck, N. A., Gibson, L. J., Hutchinson, J. W. & Wadley, H. N. G. 2000. Metal foams : A desain guide. Butter worth Heinemann: Burlington.
- Badan Pusat Statistik. 2018. *Statistik Indonesia 2018*.
- Degischer HP, Kriszt B. 2002 Handbook of cellular metals: production, processing, applications. Wiley-VCH Weinheim.
- G. Zheng, S. Wu, G. Sun, G. Li, Q. Li, Crushing analysis of foam-filled single and bitubal polygonal thin-walled tubes, Int. J. Mech. Sci. 87 (2014) 226–240
- H. Kavi, A.K. Toksoy, M. Guden, Predicting energy absorption in a foam-filled thin-walled aluminum tube based on experimentally determined strengthening coefficient, Mater. Des. 27 (4) (2006) 263–269
- Haworth, N., & Symmon, M., 2001. Driving to reduce fuel consumption and improve road safety, road safety research, policing, and Educaton Conference.
- Hayashi. Impact resistant structure for the helicopter and energy absorber used for the

- same. US Patent, US006959894B2, Nov, 2005
- Huang, Helai. 2014. *Indexing crash worthiness and crash aggressivity by major car brands*, safety science, 62: 339–347.
- I Putu Ali Putra. 2014. *Mengenal Sistem Keselamatan Pada Mobil*. Indonesia.
- Jatmiko, A. (2014). Pengaruh variasi geometri crash box 2 segmen terhadap kemampuan menyerap energi impak dengan simulasi komputer. Tesis. Malang. Jurusan Teknik Mesin Universitas Brawijaya
- Kementrian Perhubungan. 2018. *Standar Keselamatan Angkutan Perdesaan*
- Johnson, W., & Soden, P. 1977. Inextensional collapse of thin-walled tubes under axial compression. *J. Strain*, 12(4), 317–330.
- Lawrence H. Van Vlack. 1995. *Ilmu dan Teknologi Bahan, edisi kelima (Penerjemah Sriati Djaprie)*. Jakarta : Erlangga
- M. Seitzberger, F.G. Rammerstorfer, R. Gradinger, H.P. Degischer, M. Blaimschein, C. Walch, Experimental studies on the quasi-static axial crushing of steel columns filled with aluminium foam, *Int. J. Solids Struct.* 37 (2000) 4125– 4147
- Nam, E., 2004. *Advanced Technology Vehicle Modeling in PERE*.
- P. Thornton, Energy absorption by foam-filled structures. SAE paper 800081, 1980
- Pei, Tan Sze. 2017. *Oblique Impact on Crashworthiness: Review*. Malaysia: Faculty of Engineering technology University Malaysia Pahang.
- S.P. Santosa, T. Wierzbicki, A.G. Hanssen, M. Langseth, Experimental and numerical studies of foam-filled sections, *Int. J. Impact Eng.* 24 (5) (2000) 509– 534
- S.P. Santosa, T. Wierzbicki, The concept of double-walled sandwich columns for energy absorption, *Int. J. Crashworthiness* 4 (2) (1999) 175–198.
- Simulia Corp. 2011. *Providence*. USA.
- Tarlochan, F. 2007. Design, fabrication and evaluation of composite sandwich panels

for crashworthiness. Universiti Putra Malaysia, Malaysia.

Toksoy, A.K. 2009. Optimization of The Axial Crushing Behavior of Closed-Cell Alumunium Foam Filled Welded 1050 Al Square-Cross Section Crash Boxes. Thesis. Izmir : Izmir Institute of Technology

Velmurugan., dan Muralikanan. 2009. Energy Absorption Characteristics of Annealed Steel Tubes Of various Cross Sections in Static And Dynamic Loading. Latin American Journal Of Solids And Structutres, Volume. 6, 2009 : 385 – 412.

Wiryo Sumarto, H., Okumura, T. (1994). Teknik Pengelasan Logam. Jakarta. PT. Pradnya Paramita.

Zhibin Li, Rong Chen, Fangyun Lu, Comparative analysis of crashworthiness of empty and foam-filled thinwalled tubes, Thin-Walled Struct. 124 (2018) 343–349

LAMPIRAN

Lampiran 1. Tabel hasil uji tarik

Reganagan	Tegangan (N/mm²)
0	0
0,032	5,714
0,192	11,429
0,361	20,000
0,537	34,286
0,722	60,000
0,906	97,143
1,091	128,571
1,275	162,857
1,460	194,286
1,628	220,000
1,789	248,571
1,941	277,143
2,085	302,857
2,230	328,571
2,350	351,429
2,478	365,714
2,591	374,286
2,695	380,000
2,807	382,857
2,911	385,714
3,024	388,571
3,128	391,429
3,232	394,286
3,345	394,286
3,449	397,143
3,545	400,000

3,649	402,857
3,754	402,857
3,850	405,714
3,954	408,571
4,050	408,571
4,147	411,429
4,251	411,429
4,347	414,286
4,443	414,286
4,540	417,143
4,636	420,000
4,732	420,000
4,828	422,857
4,917	422,857
5,005	425,714
5,101	425,714
5,189	425,714
5,278	428,571
5,374	428,571
5,462	431,429
5,550	431,429
5,638	434,286
5,727	434,286
5,815	434,286
5,895	437,143
5,983	437,143
6,072	437,143
6,152	440,000
6,240	440,000
6,320	442,857
6,400	442,857

8,951	462,857
9,031	462,857
9,103	465,714
9,184	465,714
9,264	465,714
9,344	465,714
9,416	465,714
9,496	465,714
9,577	465,714
9,657	468,571
9,737	468,571
9,817	468,571
9,897	468,571
9,970	468,571
10,050	468,571
10,130	468,571
10,210	468,571
10,290	468,571
10,371	468,571
10,451	471,429
10,531	471,429
10,611	471,429
10,691	471,429
10,780	471,429
10,860	471,429
10,940	471,429
11,020	471,429
11,100	471,429
11,181	471,429
11,261	471,429
11,341	468,571

11,429	468,571
11,517	468,571
11,598	468,571
11,726	462,857
11,822	42,857
11,983	40,000
12,199	42,857
12,432	40,000
12,697	42,857
12,961	42,857
13,234	42,857
13,507	42,857
13,779	42,857
14,052	42,857
14,325	40,000
14,597	42,857
14,870	42,857
15,135	42,857
15,407	42,857
15,672	42,857
15,937	42,857
16,201	42,857

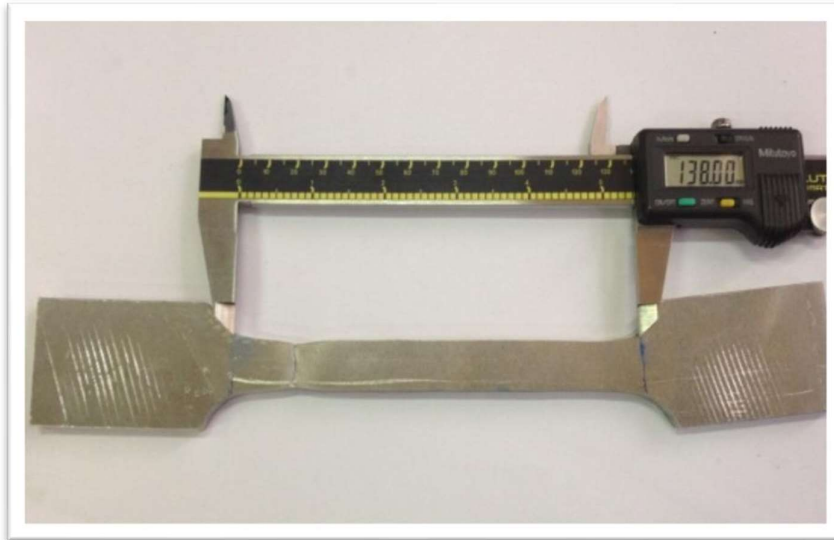
Lampiran 2. *Tabel waktu-displacement untuk semua variasi penampang*

waktu (s)	Displacement							
	SWFF	SWFF1	SWFF2	SWFF3	DWFF	DWFF1	DWFF2	DWFF3
0	0	0	0	0	0	0	0	0
0.0006	2.00239	1.96843	1.93671	1.46295	1.98317	1.95119	1.73804	1.82234
0.0012	4.76785	4.69309	4.61566	3.99633	4.62651	4.54662	4.13293	4.23674
0.0018	7.32385	7.1761	7.03924	5.8315	6.99932	6.76741	5.93532	6.30424
0.0024	9.69358	9.46752	9.27271	7.43179	9.1523	8.74005	7.51925	8.1396
0.003	11.881	11.5864	11.3434	9.11884	11.0989	10.5162	8.94023	9.82575
0.0036	13.8884	13.5332	13.2552	10.6831	12.8487	12.0765	10.2701	11.4223
0.0042	15.7166	15.3113	15.0244	12.1406	14.4103	13.4502	11.5694	12.9265
0.0048	17.3693	16.9394	16.7278	13.5401	15.7874	14.6397	12.7847	14.3319
0.0054	18.8535	18.4293	18.2922	14.8783	16.981	15.6584	13.8863	15.5996
0.006	20.1693	19.776	19.7146	16.0292	17.9986	16.5013	14.8471	16.7345
0.0066	21.3201	20.9731	20.9926	17.0849	18.8478	17.1742	15.6786	17.7221
0.0072	22.3088	22.0263	22.1314	18.1697	19.5441	17.6674	16.3559	18.5467
0.0078	23.1394	22.9493	23.002	19.2121	20.0628	17.9884	16.8738	19.2163
0.0084	23.8157	23.7355	23.8036	20.1642	20.4347	18.1361	17.2392	19.7272
0.009	24.3415	24.3854	24.4545	21.0714	20.6479	18.1123	17.4698	20.0812
0.0096	24.723	24.8838	24.9627	21.8841	20.7033	17.9234	17.5545	20.27
0.0102	24.9626	25.226	25.3257	22.5913	20.6055	17.5977	17.4902	20.2853
0.0108	25.0667	25.4171	25.5463	23.1767	20.3723	17.2009	17.2726	20.1355
0.0114	25.0412	25.4601	25.618	23.6349	20.0371	16.8262	16.9404	19.8437
0.012	24.8912	25.3574	25.5434	23.9612	19.6442	16.5666	16.6018	19.4463
0.0126	24.6226	25.1179	25.3296	24.1525	19.2289	16.4446	16.3206	19.014
0.0132	24.2675	24.7692	25.0001	24.2113	18.777	16.4011	16.097	18.5193
0.0138	23.8534	24.3544	24.5886	24.1347	18.2797	16.391	15.8864	18.2308
0.0144	23.381	23.9002	24.1525	23.9224	17.8107	16.3777	15.7988	18.1302
0.015	22.884	23.5116	23.7374	23.5978	17.5618	16.3721	15.7604	18.0894
0.0156	22.4357	23.1799	23.3839	23.2493	17.4549	16.3729	15.7547	18.0563
0.0162	22.0082	22.867	23.0625	22.9953	17.4178	16.3705	15.7536	18.0481
0.0168	21.5758	22.5641	22.8273	22.8377	17.4075	16.3683	15.757	18.0449
0.0174	21.29	22.3286	22.6608	22.7628	17.4007	16.3669	15.7574	18.0443
0.018	21.1189	22.2157	22.5125	22.7158	17.3983	16.3655	15.7573	18.044
0.0186	21.0082	22.1581	22.4408	22.7103	17.3954	16.3643	15.7579	18.0431
0.0192	20.9555	22.1247	22.3951	22.7157	17.3927	16.3625	15.7573	18.039
0.0198	20.9274	22.1122	22.3679	22.7327	17.3917	16.3609	15.7572	18.0387
0.0204	20.912	22.1025	22.3652	22.7376	17.3901	16.3594	15.7572	18.0397
0.021	20.9026	22.0902	22.3581	22.7288	17.3877	16.3579	15.7568	18.0373
0.0216	20.8978	22.077	22.3434	22.7151	17.387	16.3564	15.7557	18.0353

0.0222	20.8943	22.0641	22.3337	22.7131	17.3861	16.3545	15.7558	18.0351
0.0228	20.8914	22.0561	22.3254	22.7247	17.3848	16.3529	15.7555	18.035
0.0234	20.8883	22.0559	22.3246	22.7353	17.3835	16.3515	15.755	18.0343
0.024	20.8857	22.0578	22.3288	22.7353	17.3825	16.3501	15.7544	18.0331
0.0246	20.8825	22.0588	22.3324	22.729	17.3813	16.3484	15.7541	18.0331
0.0252	20.8799	22.0578	22.3364	22.7238	17.3801	16.3471	15.7539	18.0331
0.0258	20.8773	22.0541	22.335	22.7236	17.379	16.3463	15.7533	18.0331
0.0264	20.8764	22.0537	22.329	22.7254	17.3779	16.3453	15.7527	18.0331
0.027	20.8756	22.0588	22.327	22.726	17.3768	16.3444	15.7524	18.0331
0.0276	20.8731	22.0588	22.332	22.7268	17.3754	16.3436	15.7522	18.0331
0.0282	20.8704	22.0554	22.3289	22.7298	17.3738	16.3427	15.7518	18.0331
0.0288	20.868	22.0478	22.3215	22.7315	17.3724	16.3418	15.7513	18.0331
0.0294	20.8666	22.0427	22.3172	22.7297	17.3708	16.3409	15.7508	18.0331
0.03	20.8653	22.0413	22.3139	22.7249	17.3694	16.3399	15.7503	18.0331
0.0306	20.8642	22.0431	22.3164	22.7231	17.3683	16.339	15.7499	18.0331
0.0312	20.8624	22.0442	22.3199	22.7259	17.3667	16.338	15.7494	18.0331
0.0318	20.8602	22.0445	22.3229	22.7293	17.3667	16.337	15.7489	18.0331
0.0324	20.8589	22.0435	22.3262	22.7299	17.3667	16.3362	15.7483	18.0331
0.033	20.8568	22.043	22.3235	22.7277	17.3667	16.3354	15.7478	18.0331
0.0336	20.8561	22.0453	22.3204	22.7266	17.3667	16.3344	15.7472	18.0331
0.0342	20.8554	22.0487	22.321	22.7266	17.3667	16.3337	15.7467	18.0331
0.0348	20.8542	22.0479	22.3212	22.7269	17.3667	16.3329	15.7463	18.0331
0.0354	20.8522	22.0438	22.3163	22.7269	17.3667	16.332	15.7459	18.0331
0.036	20.8505	22.04	22.3119	22.7273	17.3667	16.3313	15.7454	18.0331
0.0366	20.8499	22.0387	22.3092	22.7282	17.3667	16.3308	15.7449	18.0331
0.0372	20.8492	22.0388	22.3078	22.7287	17.3667	16.3302	15.7444	18.0331
0.0378	20.8484	22.0404	22.3109	22.7283	17.3667	16.3295	15.7439	18.0331
0.0384	20.8466	22.0415	22.3136	22.7272	17.3667	16.3288	15.7435	18.0331
0.039	20.8439	22.0418	22.3169	22.7273	17.3667	16.3282	15.7431	18.0331
0.0396	20.8417	22.0414	22.3173	22.7274	17.3667	16.3275	15.7426	18.0331
0.0402	20.8402	22.0417	22.3138	22.7275	17.3667	16.3269	15.7421	18.0331
0.0408	20.8388	22.0441	22.3116	22.7276	17.3667	16.3264	15.7417	18.0331
0.0414	20.8376	22.0455	22.3112	22.7277	17.3667	16.3257	15.7412	18.0331
0.042	20.8363	22.0444	22.3097	22.7278	17.3667	16.3252	15.7409	18.0331
0.0426	20.8339	22.0414	22.3051	22.7279	17.3667	16.3242	15.7403	18.0331
0.0432	20.8329	22.0385	22.3023	22.728	17.3667	16.3235	15.7399	18.0331
0.0438	20.8324	22.0375	22.3007	22.7281	17.3667	16.3235	15.7396	18.0331
0.0444	20.8319	22.038	22.3017	22.7282	17.3667	16.3235	15.7392	18.0331
0.045	20.831	22.0392	22.3043	22.7283	17.3667	16.3235	15.7388	18.0331
0.0456	20.8292	22.0398	22.307	22.7284	17.3667	16.3235	15.7385	18.0331
0.0462	20.8275	22.0397	22.3076	22.7285	17.3667	16.3235	15.7381	18.0331

0.0468	20.8255	22.0394	22.3043	22.7286	17.3667	16.3235	15.7377	18.0331
0.0474	20.8245	22.0402	22.3013	22.7287	17.3667	16.3235	15.7373	18.0331
0.048	20.8236	22.0417	22.2998	22.7288	17.3667	16.3235	15.7369	18.0331
0.0486	20.8224	22.0421	22.2988	22.7289	17.3667	16.3235	15.7364	18.0331
0.0492	20.8194	22.0408	22.2962	22.729	17.3667	16.3235	15.736	18.0331
0.0498	20.8174	22.0379	22.2927	22.7291	17.3667	16.3235	15.7356	18.0331
0.0504	20.8165	22.0362	22.291	22.7292	17.3667	16.3235	15.7352	18.0331
0.051	20.8151	22.0361	22.2911	22.7293	17.3667	16.3235	15.7348	18.0331
0.0516	20.8138	22.0369	22.2935	22.7294	17.3667	16.3235	15.7343	18.0331
0.0522	20.8132	22.0376	22.2954	22.7295	17.3667	16.3235	15.7343	18.0331
0.0528	20.8126	22.0375	22.2954	22.7296	17.3667	16.3235	15.7343	18.0331
0.0534	20.8111	22.037	22.2954	22.7297	17.3667	16.3235	15.7343	18.0331
0.054	20.8103	22.037	22.2954	22.7298	17.3667	16.3235	15.7343	18.0331
0.0546	20.81	22.0379	22.2954	22.7299	17.3667	16.3235	15.7343	18.0331
0.0552	20.8097	22.0384	22.2954	22.73	17.3667	16.3235	15.7343	18.0331
0.0558	20.8088	22.0377	22.2954	22.7301	17.3667	16.3235	15.7343	18.0331
0.0564	20.8078	22.0359	22.2954	22.7302	17.3667	16.3235	15.7343	18.0331
0.057	20.8059	22.0347	22.2954	22.7303	17.3667	16.3235	15.7343	18.0331
0.0576	20.8047	22.0341	22.2954	22.7304	17.3667	16.3235	15.7343	18.0331
0.0582	20.8035	22.0345	22.2954	22.7305	17.3667	16.3235	15.7343	18.0331
0.0588	20.8029	22.0351	22.2954	22.7306	17.3667	16.3235	15.7343	18.0331
0.0594	20.802	22.0354	22.2954	22.7307	17.3667	16.3235	15.7343	18.0331
0.06	20.8007	22.0349	22.2954	22.7308	17.3667	16.3235	15.7343	18.0331

Lampiran 3. Foto pengujian Tarik dan Tekan



Gambar 4.21 *Spesimen hasil uji tarik*



Gambar 4.22 *Spesimen hasil uji tekan*