

DAFTAR PUSTAKA

Akbari, D & Sutrisno. 2014. *Interpretasi Data Geophysical Well Logging dan Analisis Hubungan Density Log dengan Kualitas Batubara*. Jakarta: UIN Jakarta

Amri, N.A. 2000. *Rescheduling pemanfaatan energi batubara Indonesia*. Thesis. Bandung: ITB

BSN, 2011. *Pedoman Pelaporan, Sumberdaya, dan Cadangan Batubara*. Jakarta: Badan Standarisasi Nasional

Ensiklopedi Seismik. 2009. Melalui: <http://ensiklopediseismik.blogspot.com/2009/01/gamma-ray-log.html?m=1> [26/10/2018]

Erihartanti., Simon Sadok Siregar, Ibrahim Sota. 2015. *Estimasi Sumberdaya Batubara Berdasarkan Data Well Logging Dengan Metode Cross Section Di Pt. Telen Orbit Prima Desa Buhut Kab. Kapuas Kalimantan Tengah*. Jurnal Fisika FLUX, Vol. 12 No.2, Agustus 2015

Ginger, D., Fielding, K., 2005, *The Petroleum Systems and Future Potential of The South Sumatra Basin*. Proceedings of the Indonesian Petroleum Association 30th Annual Convention and Exhibition, Indonesia.

Harsono, Andi. 1997. *Evaluasi Formasi dan Aplikasi Log*. Schlumberger Oilfield Services.

Huda, Miftahul., Zulfahmi, Nendaryono Madiutomo, Bambang Yunianto, Zulkifli Pulungan, Asep Bahtiar Purnama, Suhendar, Tri Widarti Masduki, Cipta Legawa Demokrat, Jeani Sulistyowati, Sokhwatul Aghnia, Sarif Subarna Yudha, Silti Salinita, Retno Damayanti, Bagaraja Sirait, Sri Handayani, Marsen Alimano, Hasniati Astika, Wulandari SuronoSupriyatna, Hari Kurnain, Budiyono, Nandang Permana, Iis Hayati, Supriyatna Mujahidin, Wahyu Agus Setiawan, Herni Khaerunisa, Nia Rosnia, Hary Tetra Antono, M. Lutfi, Mustaram, Dudi Mulyadie. 2015. *Pengembangan Aplikasi Teknologi Underground Coal Gasification (UCG) di Indonesia Tahap II*. Bandung: Puslitbang tekMIRA

Kementrian ESDM. 2018. Melalui: <https://www.esdm.go.id/id/media-center/arsip-berita/cadangan-batubara-indonesia-sebesar-26-miliar-ton> [02/10/2018]

n, Wulan E. 2012. *Peningkatan Kualitas Batubara Indonesia Peringkat 1000 Pertama Melalui Penghilangan Moisture Dengan Pemanasan Gelombang Mikro*. Depok: Universitas Inonesia



- Kusuma, Indra. 2012. *Geologi dan Eksplorasi Batubara Daerah Asam-Asam, Kabupaten Tanah Laut, Kalimantan Selatan*. Skripsi. Bandung: ITB
- Lestari, Dessy S., M. Amril Asy'ari, Rachmat Hidayatullah. 2016. *Geokimia Batubara Untuk Beberapa Industri*. Banjarmasin: Jurnal Poros Teknik, Vol. 8 No.1
- Purnama, Asep B., Silti Salinita, Sudirman, Yoga A. Sendjaja, Budi Muljana. 2018. *Penentuan Lingkungan Pengendapan Lapisan Batubara D, Formasi Muara Enim, Blok Suban Burung, Cekungan Sumatera Selatan*. Bandung: Jurnal Teknologi Mineral dan Batubara Volume 14
- Santoso, Binarko. 2015. *Petrologi Batu Bara Sumatera dan Kalimantan: Jenis, Peringkat, dan Aplikasi*. Jakarta: LIPI Press
- Setiahadiwibowo, Ajimmas P. 2016. *Analisis Karakteristik Batubara Berdasarkan Rekaman Well Logging di Daerah Kabupaten Katingan, Kalimantan Tengah*. Kurvatek Vol. 1. No. 2, November 2016. Yogyakarta
- Thunggara, Willem. 2012. *Perhitungan Volume Batubara Berdasarkan Distribusi Lithofasies Studi Kasus: Formasi Muara Enim Lapangan "P" Riau*. Skripsi. Depok: Universitas Indonesia
- World Coal Institute. 2005. *Sumber Daya Batubara*
- Yulianto, Tony dan Sugeng Widodo. 2008. *Identifikasi Peyebaran dan Ketebalan Batubara Menggunakan Metode Geolistrik Resistivitas*. Bandung: Berkala Fisika



LAMPIRAN



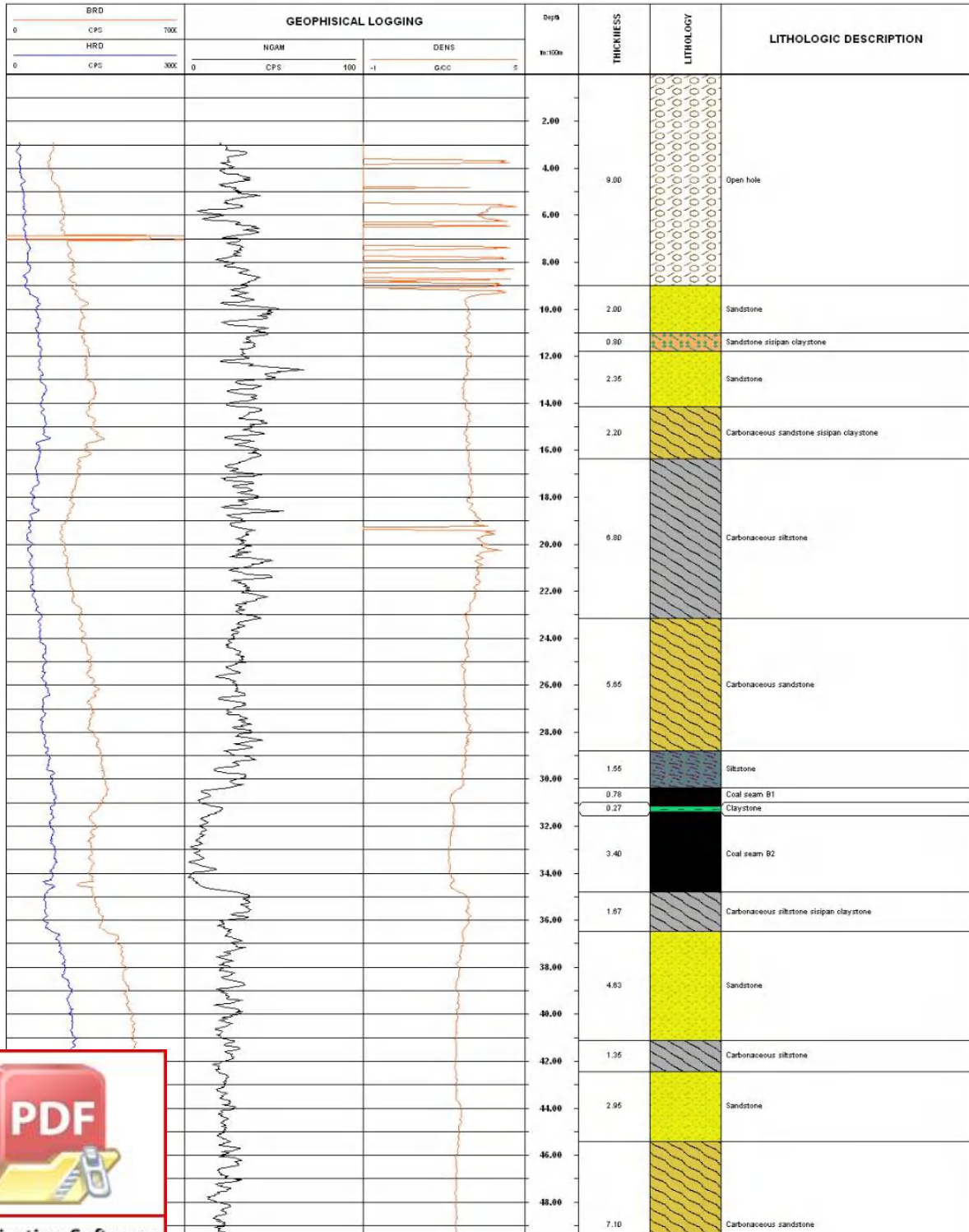
Lampiran 1

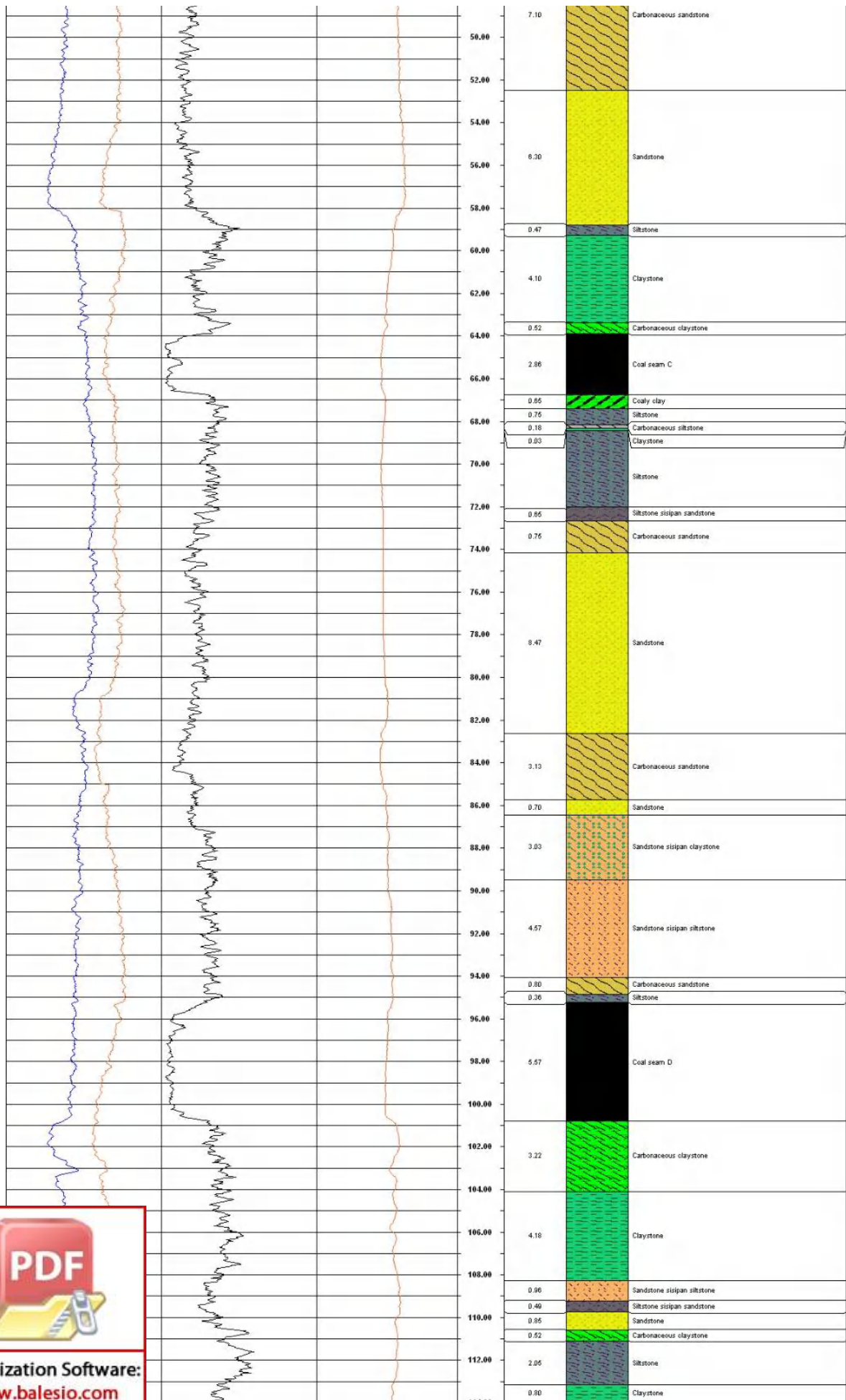


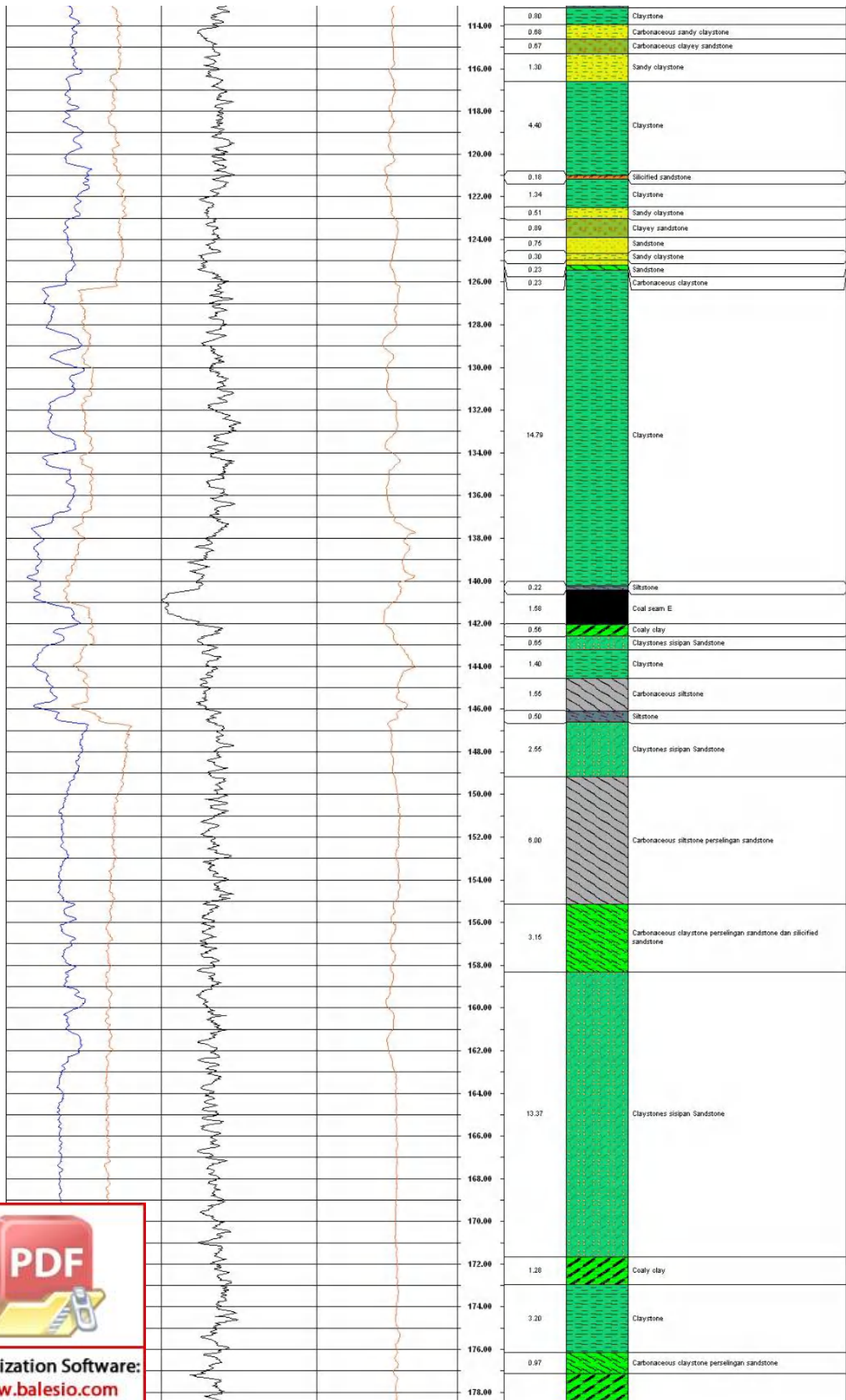
**PUSAT PENELITIAN DAN PENGEMBANGAN
TEKNOLOGI MINERAL DAN BATUBARA**

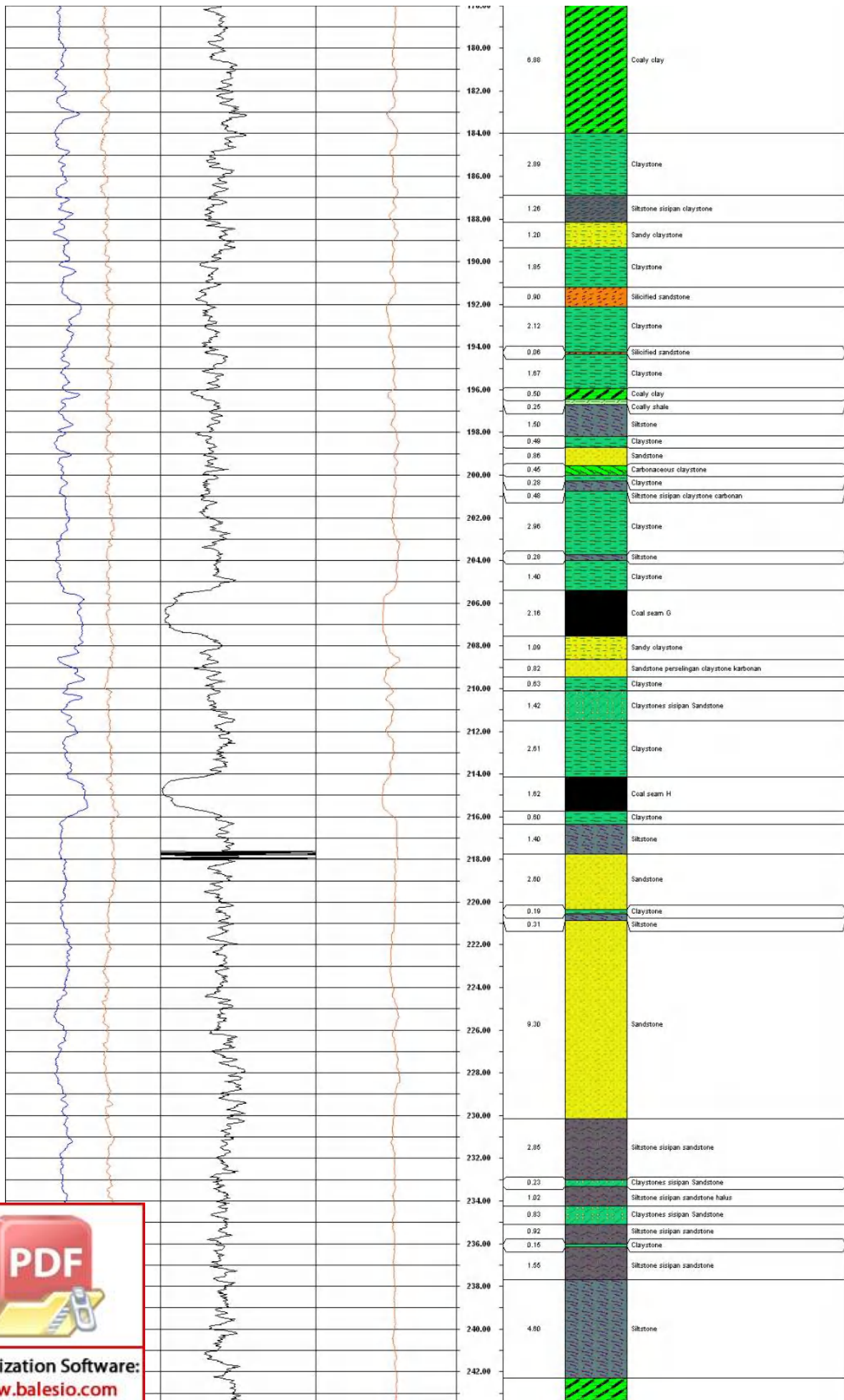
DATA LOGGING
(Underground Coal Gasification)

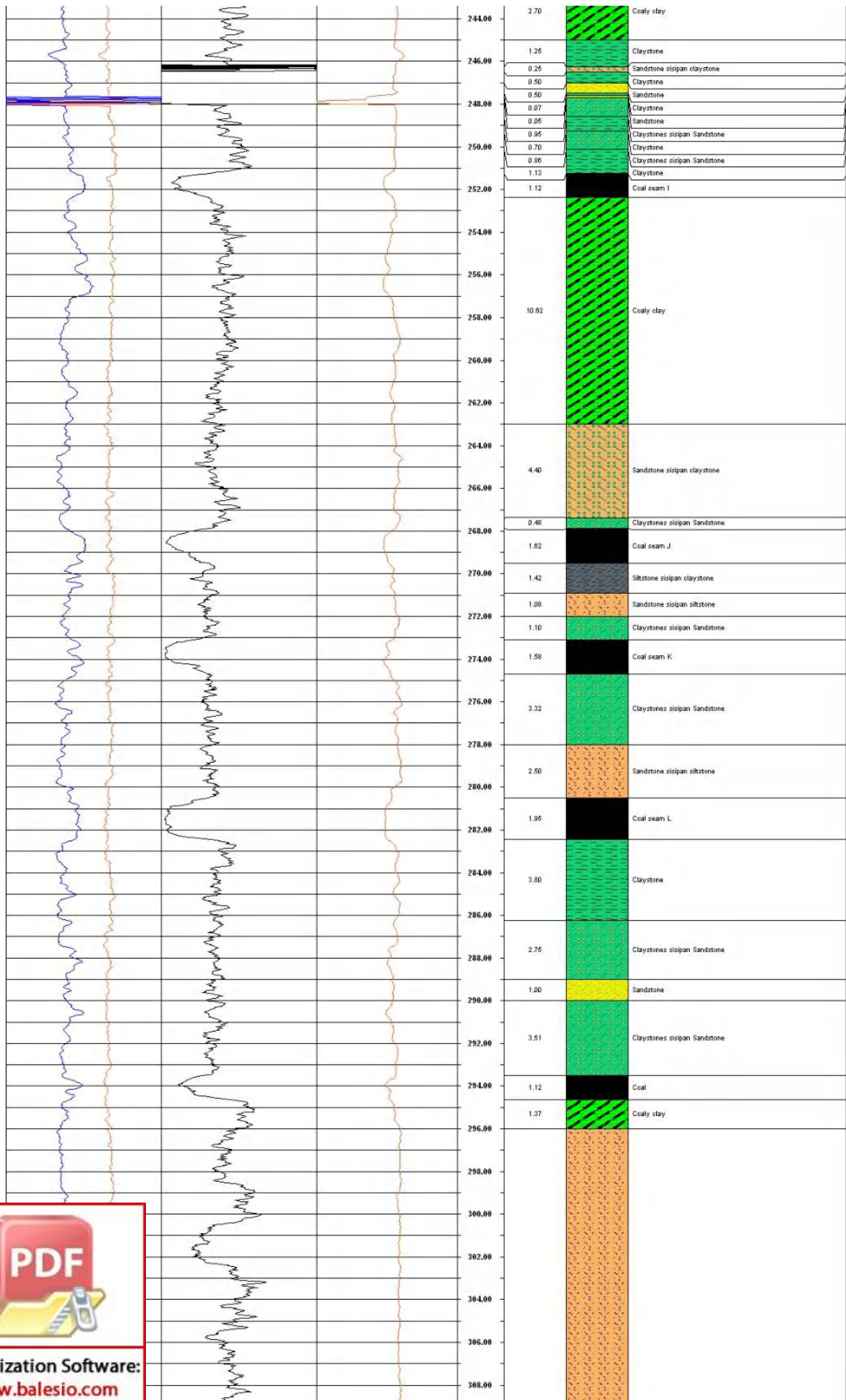
Lubang Bor : UCG 08 Koordinat X : 319414.20 Elevasi : 69,55 m Kedalaman Log : 358,00 m
 Lokasi : Macan Sakti, Musi Banyuasin, Palembang, Sumatera Selatan Koordinat Y : 9713858.30 Skala : 1:100 Total Kedalaman : 365,15 m

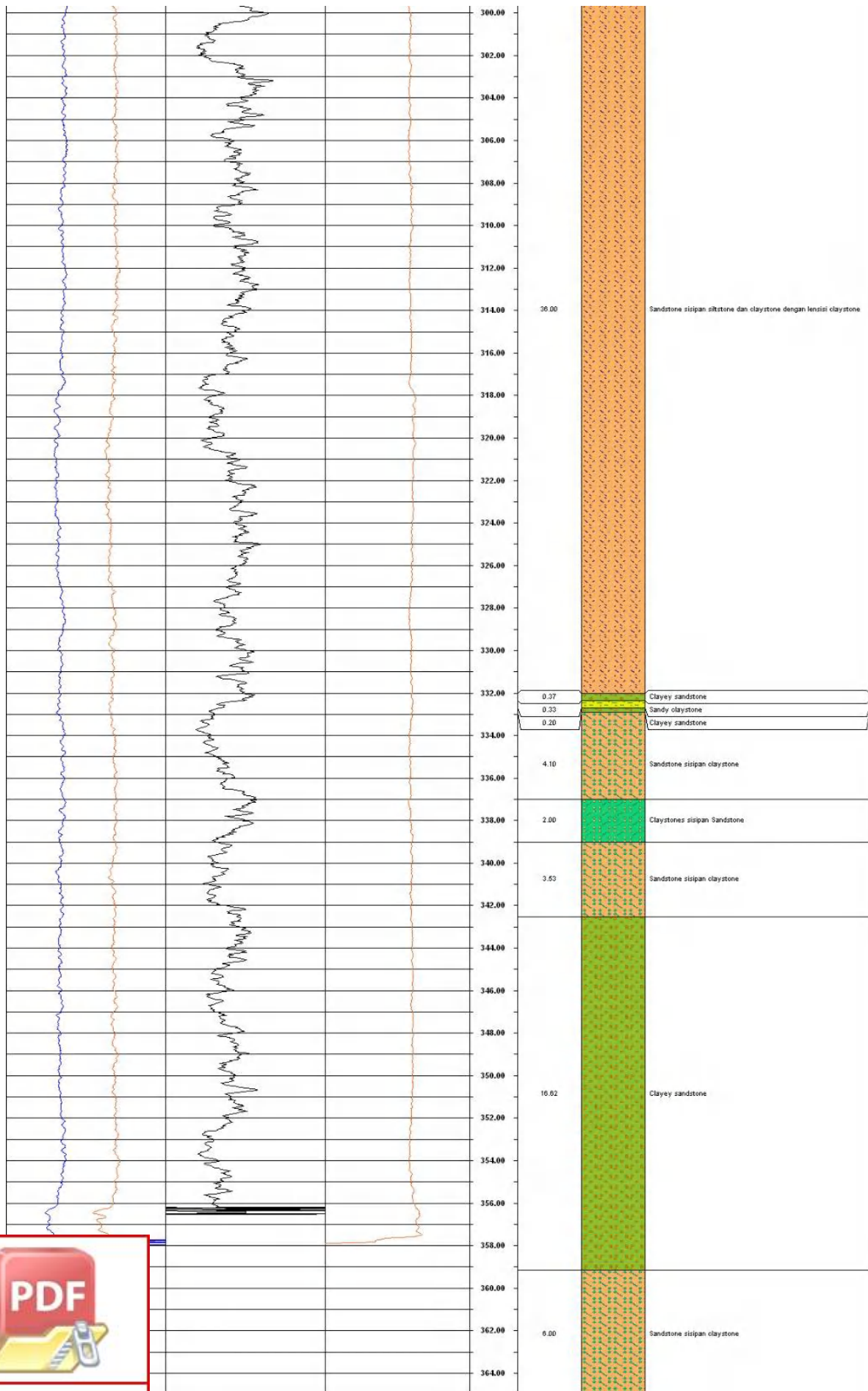












Gambar data logging sumur bor UCG 08

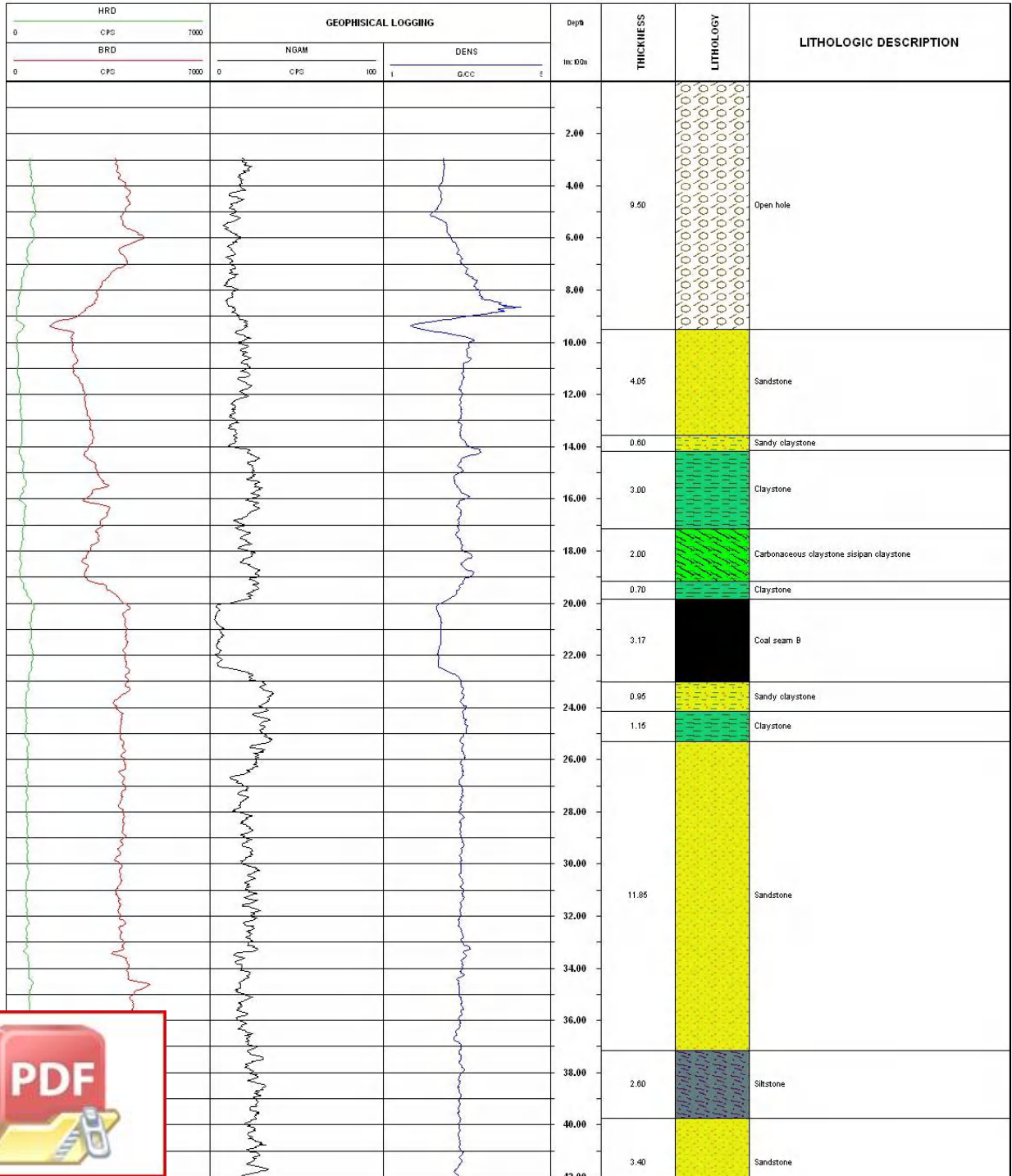
Lampiran 2

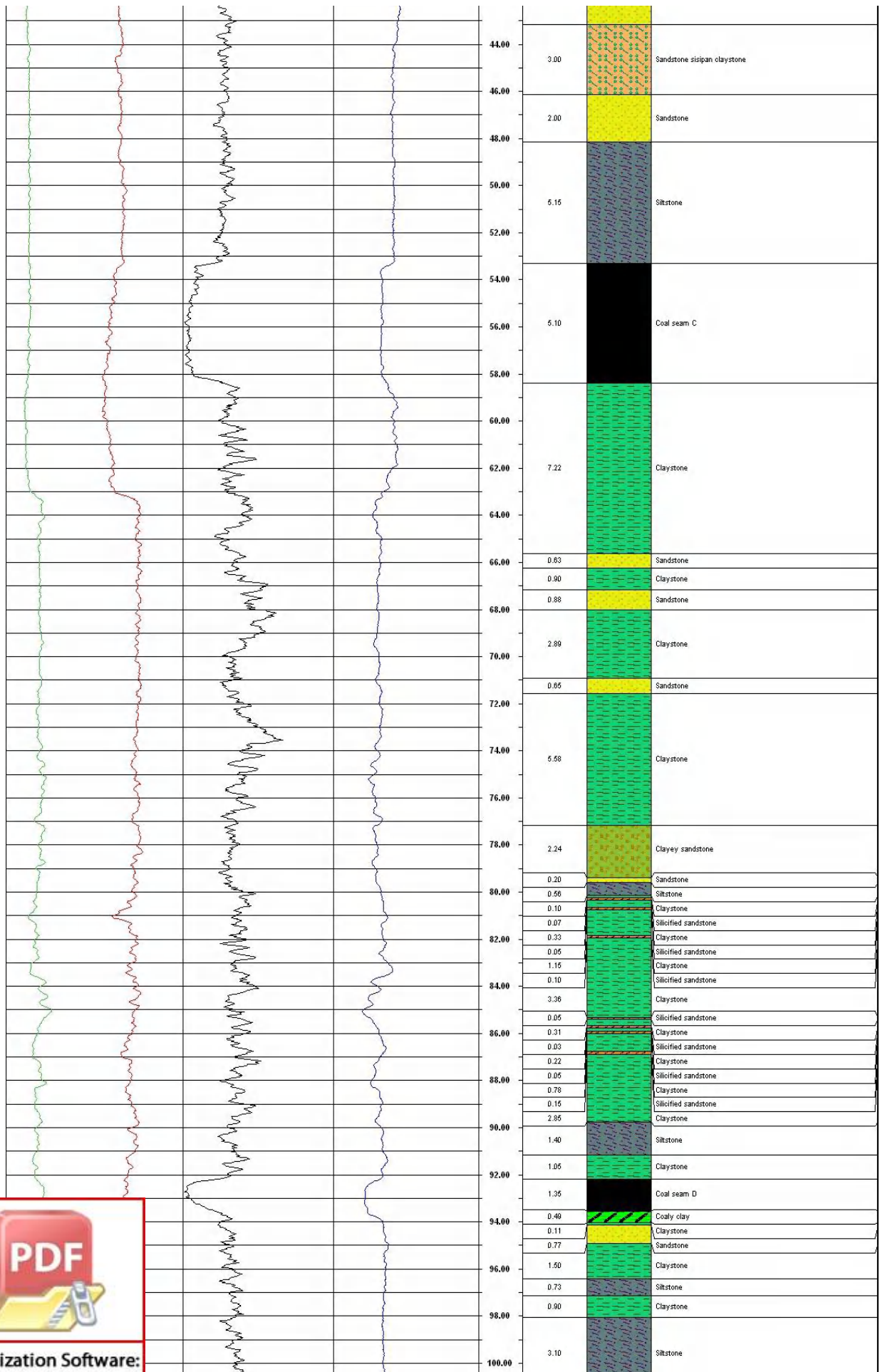


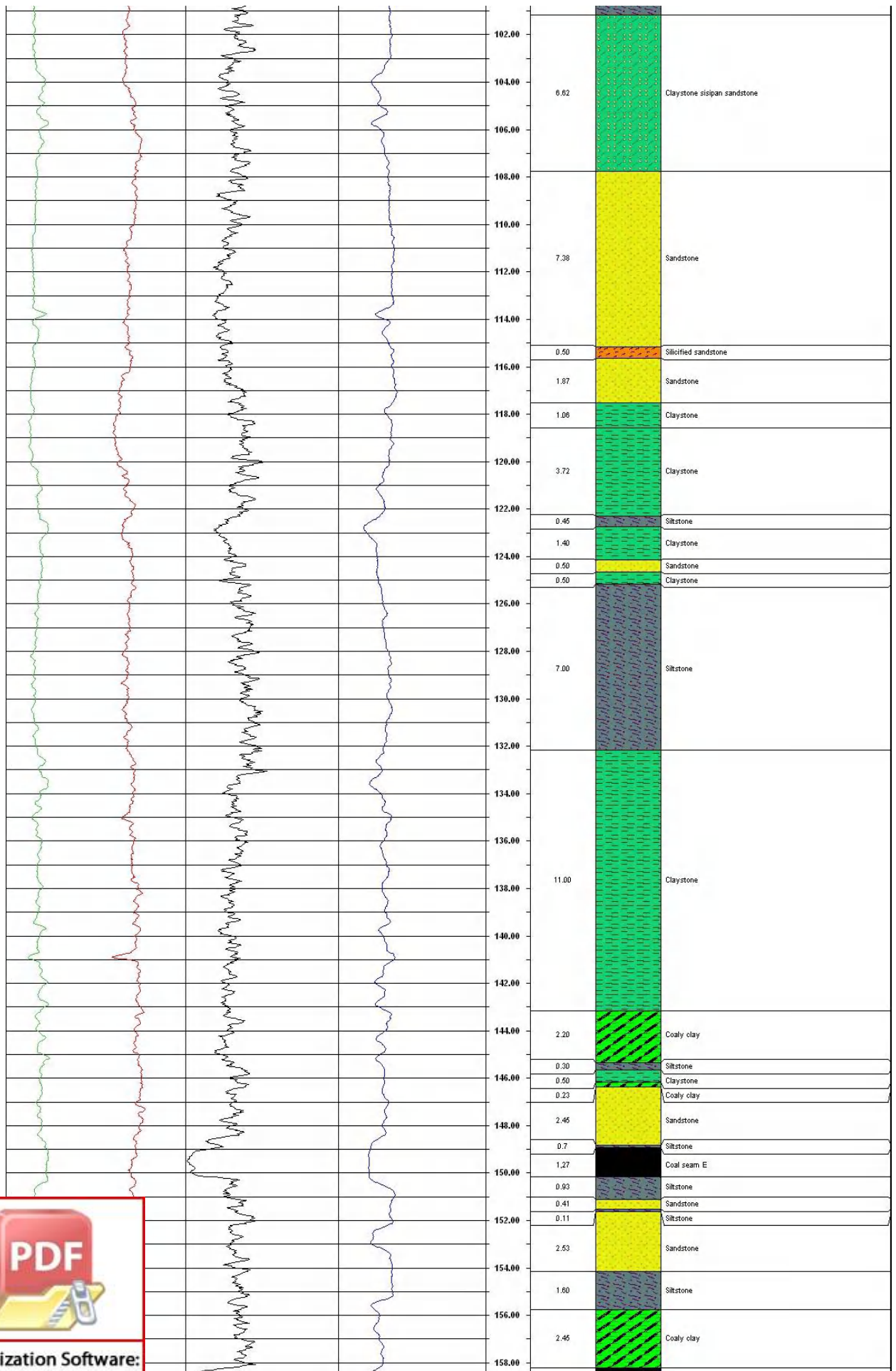
**PUSAT PENELITIAN DAN PENGEMBANGAN
TEKNOLOGI MINERAL DAN BATUBARA**

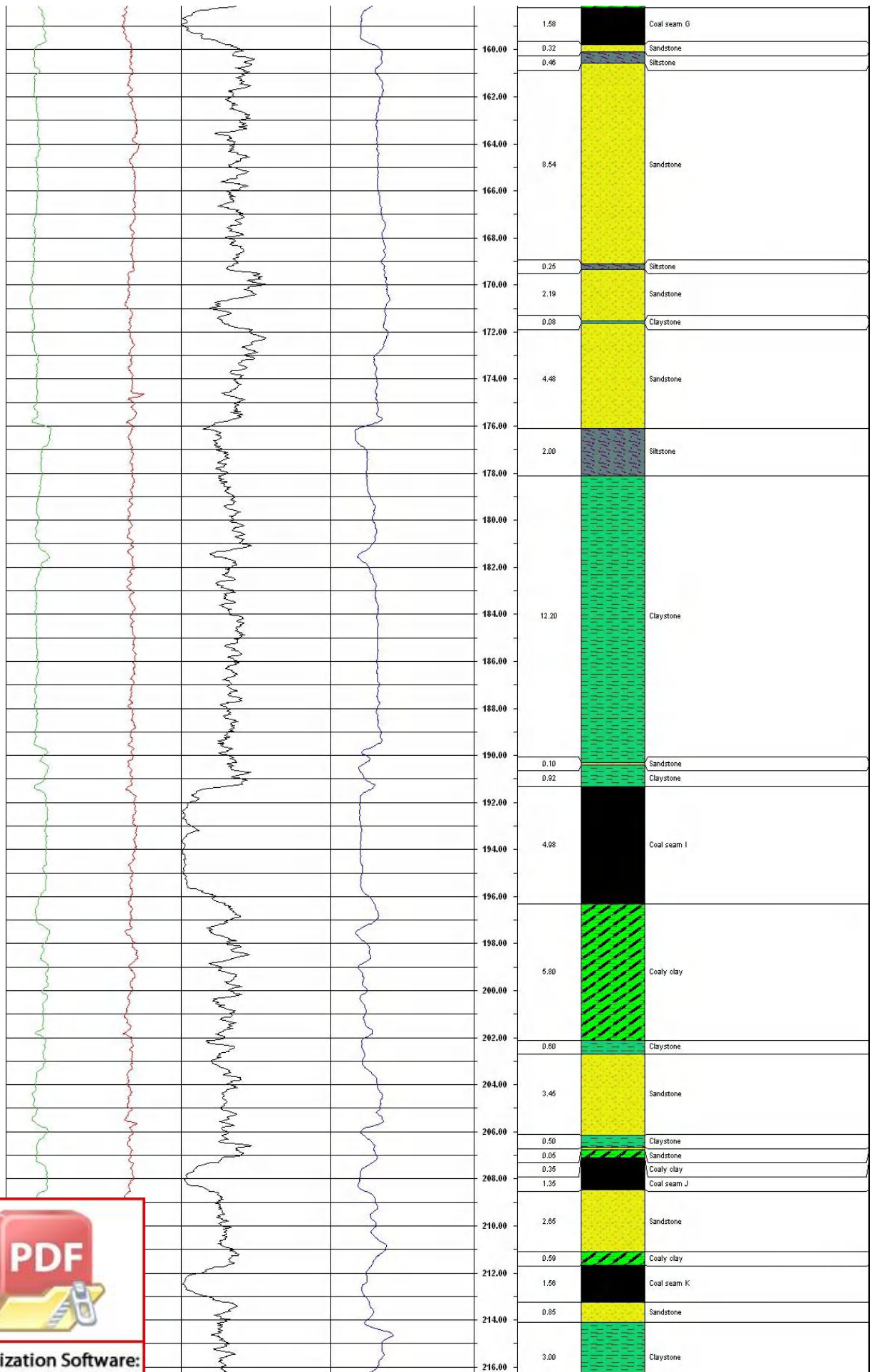
DATA LOGGING
(Underground Coal Gasification)

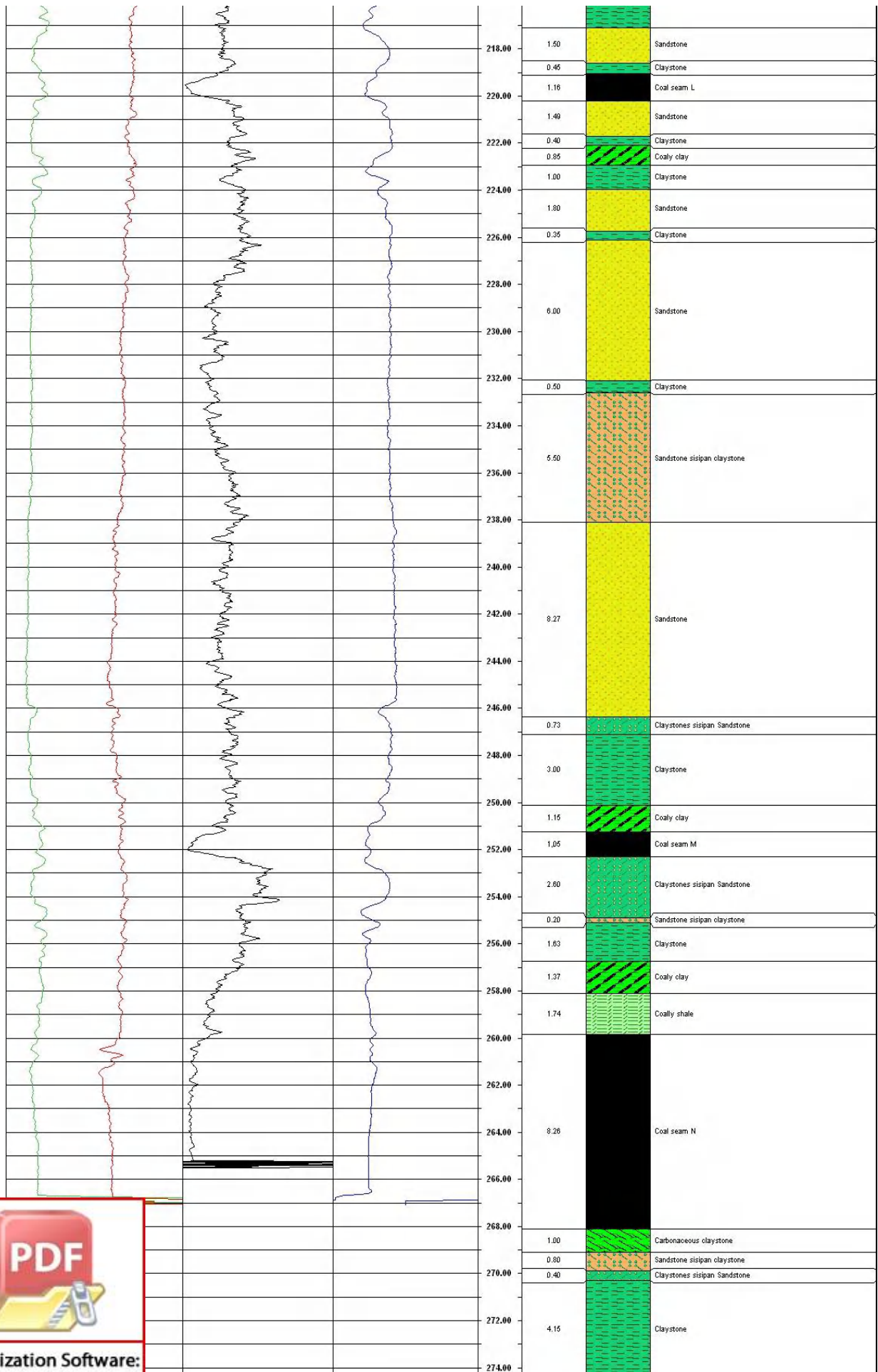
Lubang Bor : UCG 09 Koordinat X : 319680.00 Elevasi : 72.30 m Kedalaman Log : 267.12 m
 Lokasi : Macan Sakti, Koordinat Y : 9713784.90 Skala : 1:100 Total Kedalaman : 290.15 m
 Musi Banyuasin,
 Palembang,
 Sumatera Selatan

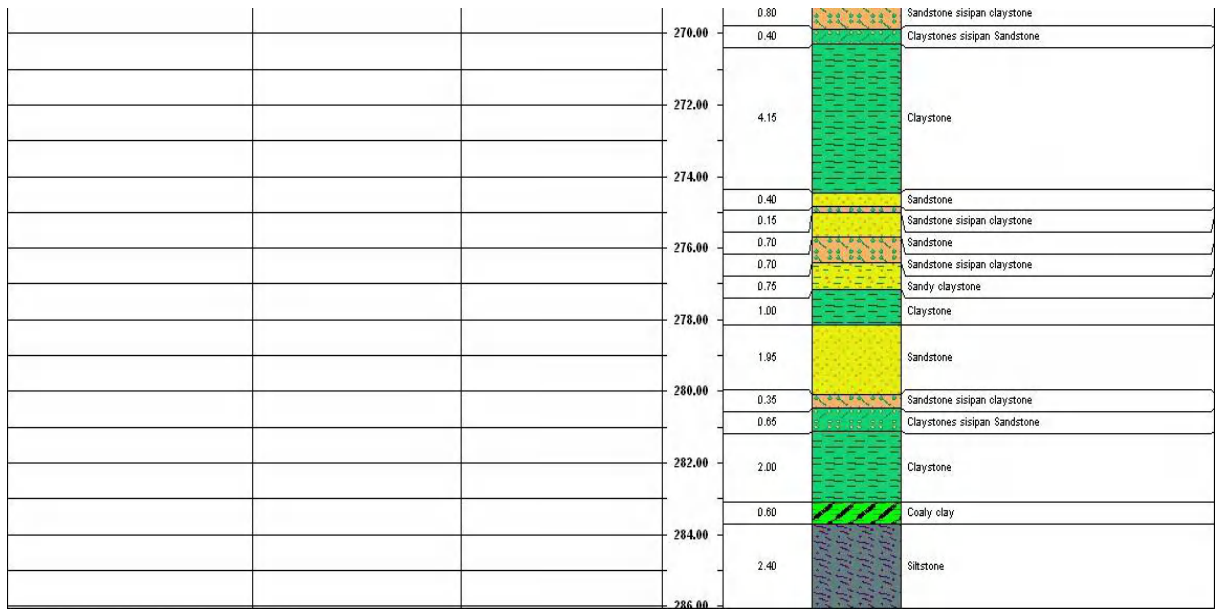












Gambar data *logging* sumur bor UCG 09



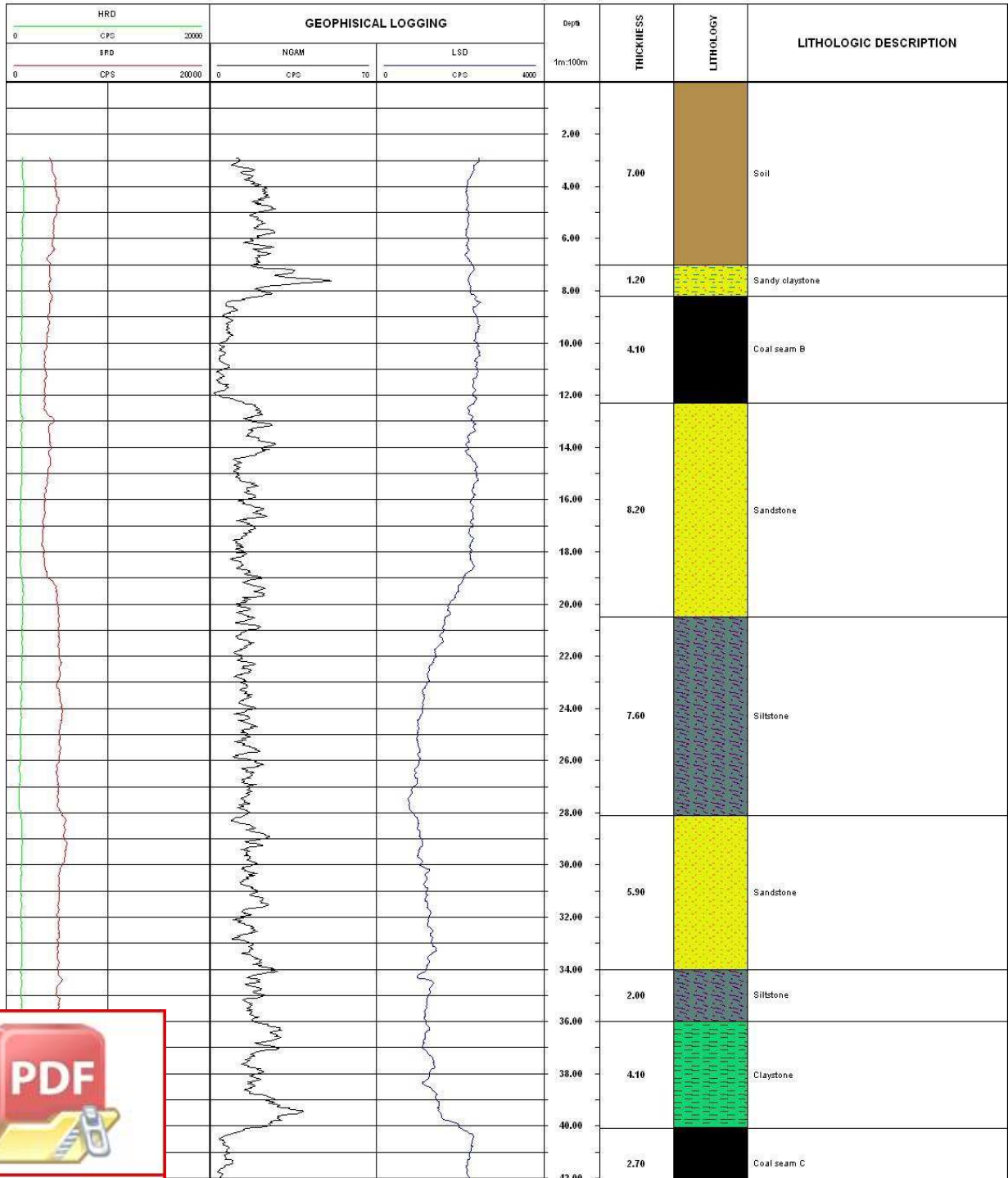
Lampiran 3

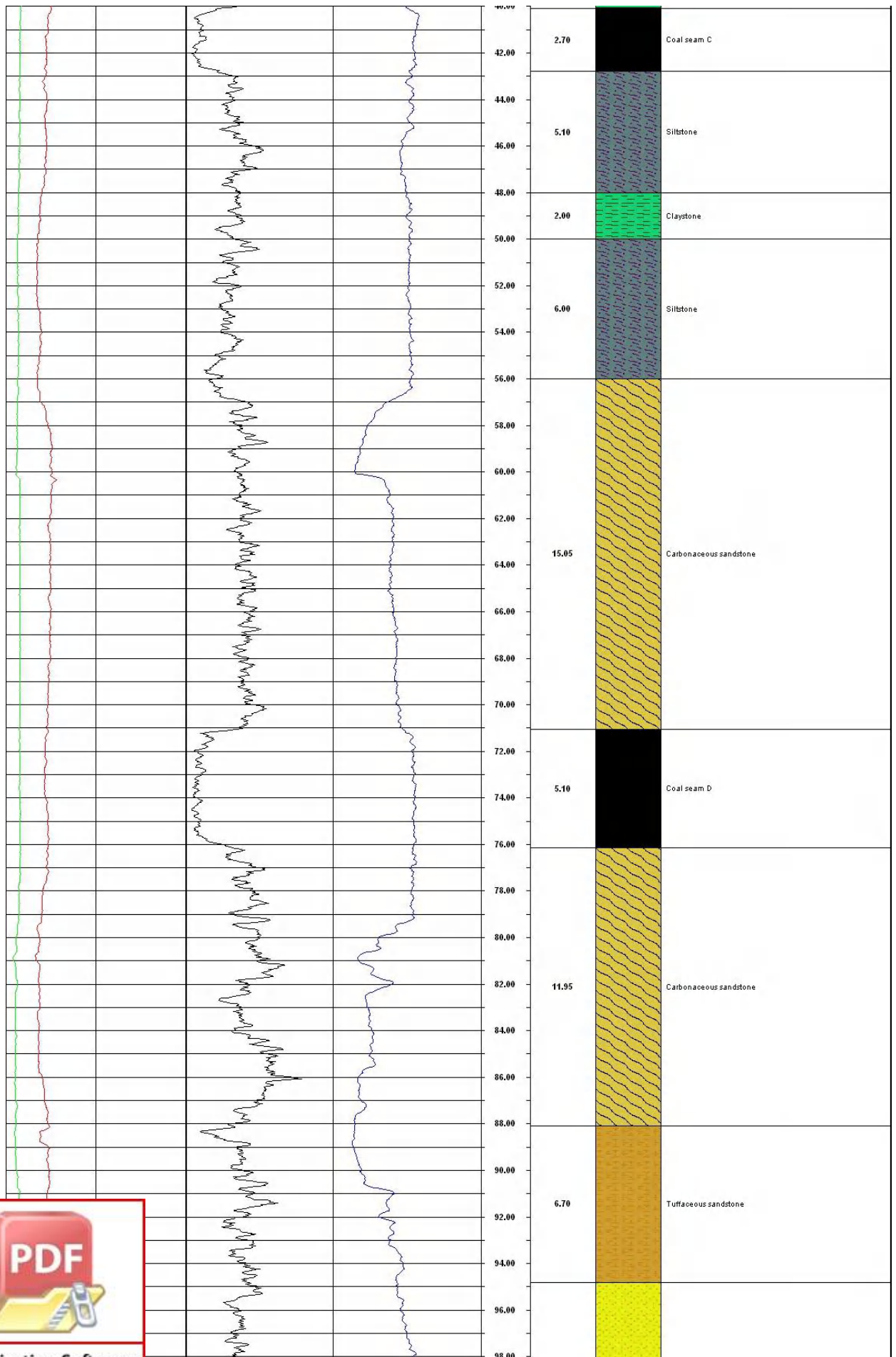


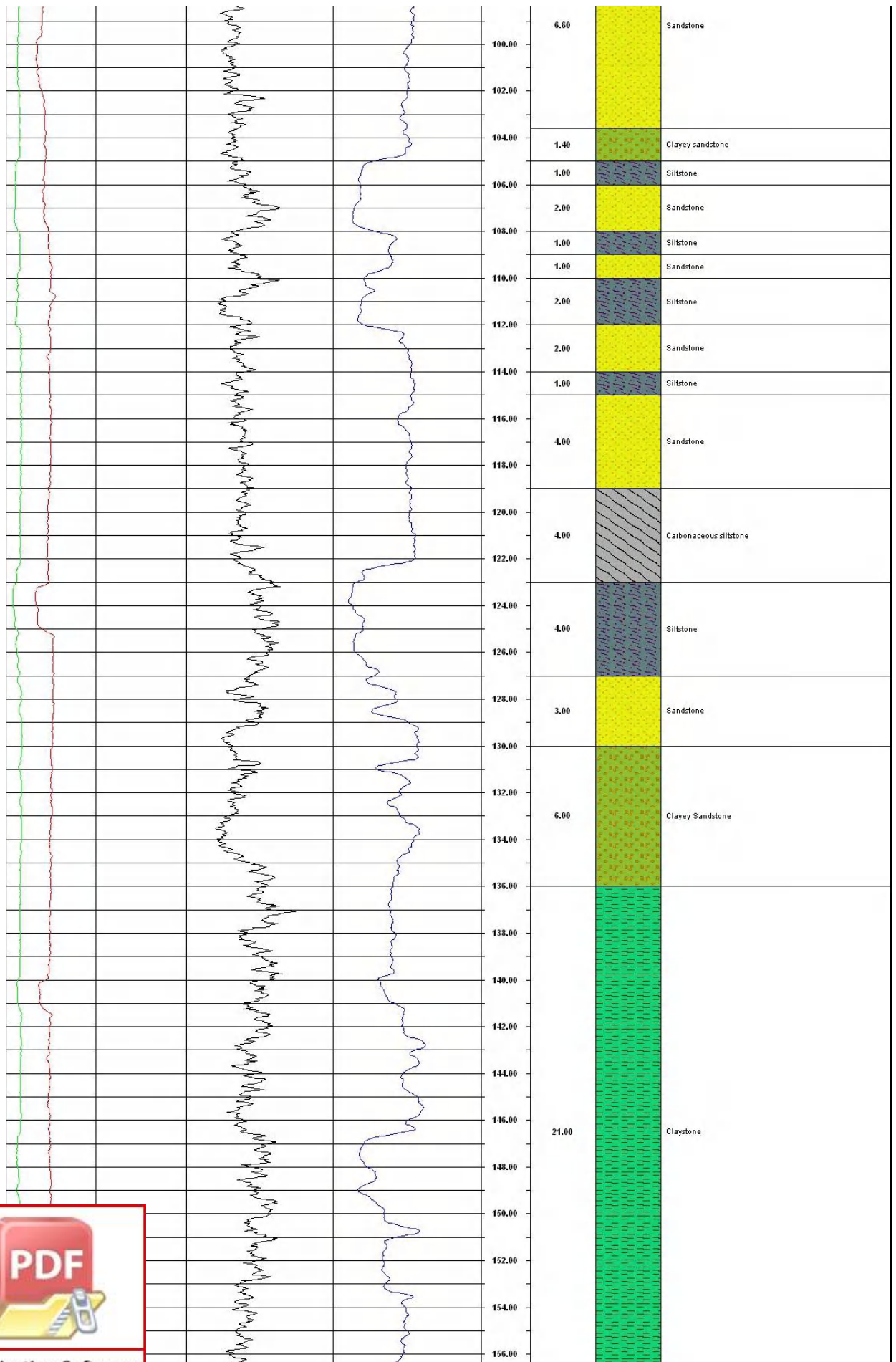
**PUSAT PENELITIAN DAN PENGEMBANGAN
TEKNOLOGI MINERAL DAN BATUBARA**

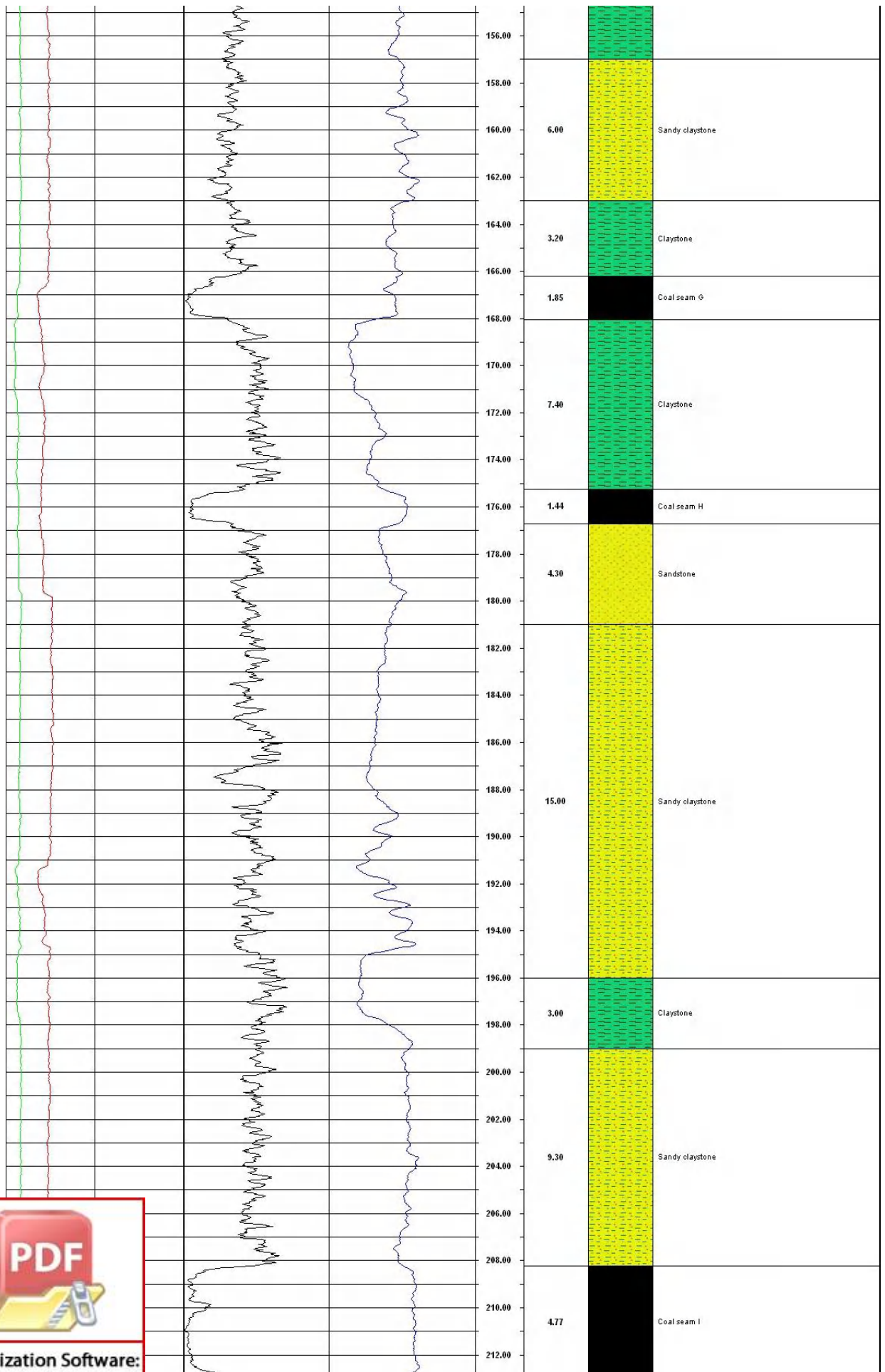
DATA LOGGING
(Underground Coal Gasification)

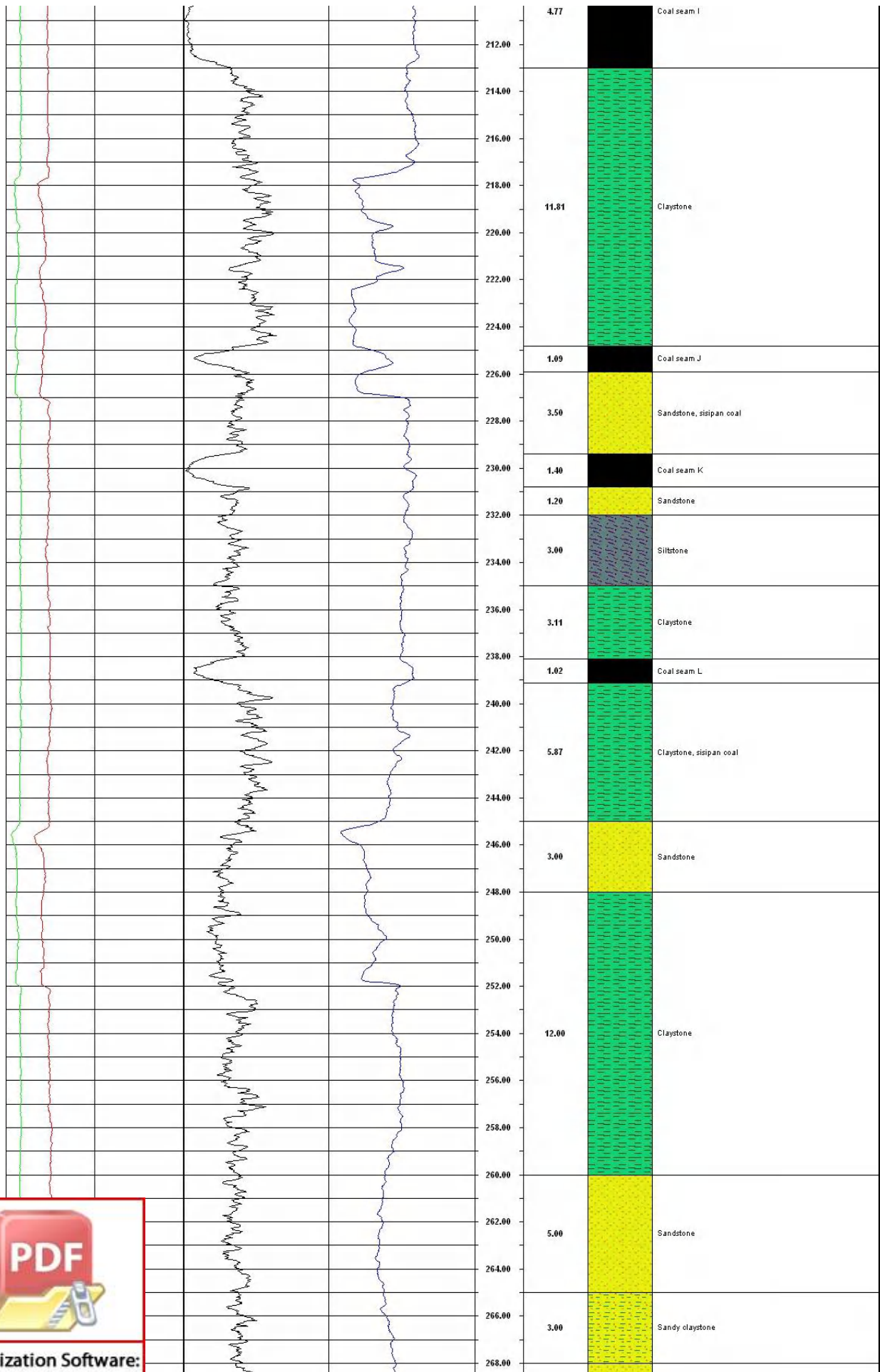
Lubang Bor : UCG 10 Koordinat X : 319667.70 Elevasi : 71,82 m Kedalaman Log : 292,00 m
 Lokasi : Macan Sakti,
 Musi Banyuasin,
 Palembang,
 Sumatera Selatan Koordinat Y : 9713741.90 Skala : 1:100 Total Kedalaman : 301,00 m

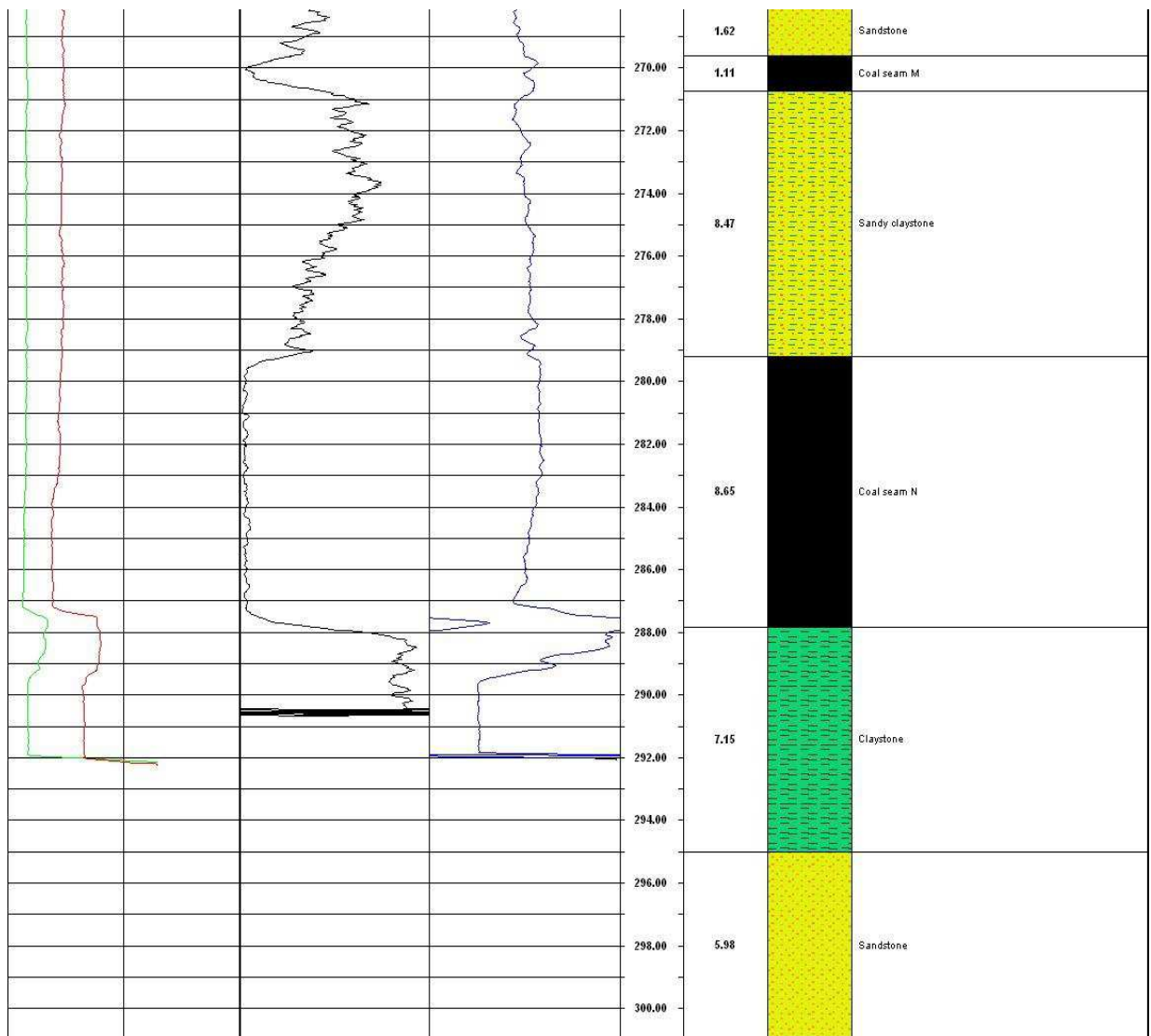












Gambar data logging sumur bor UCG 10



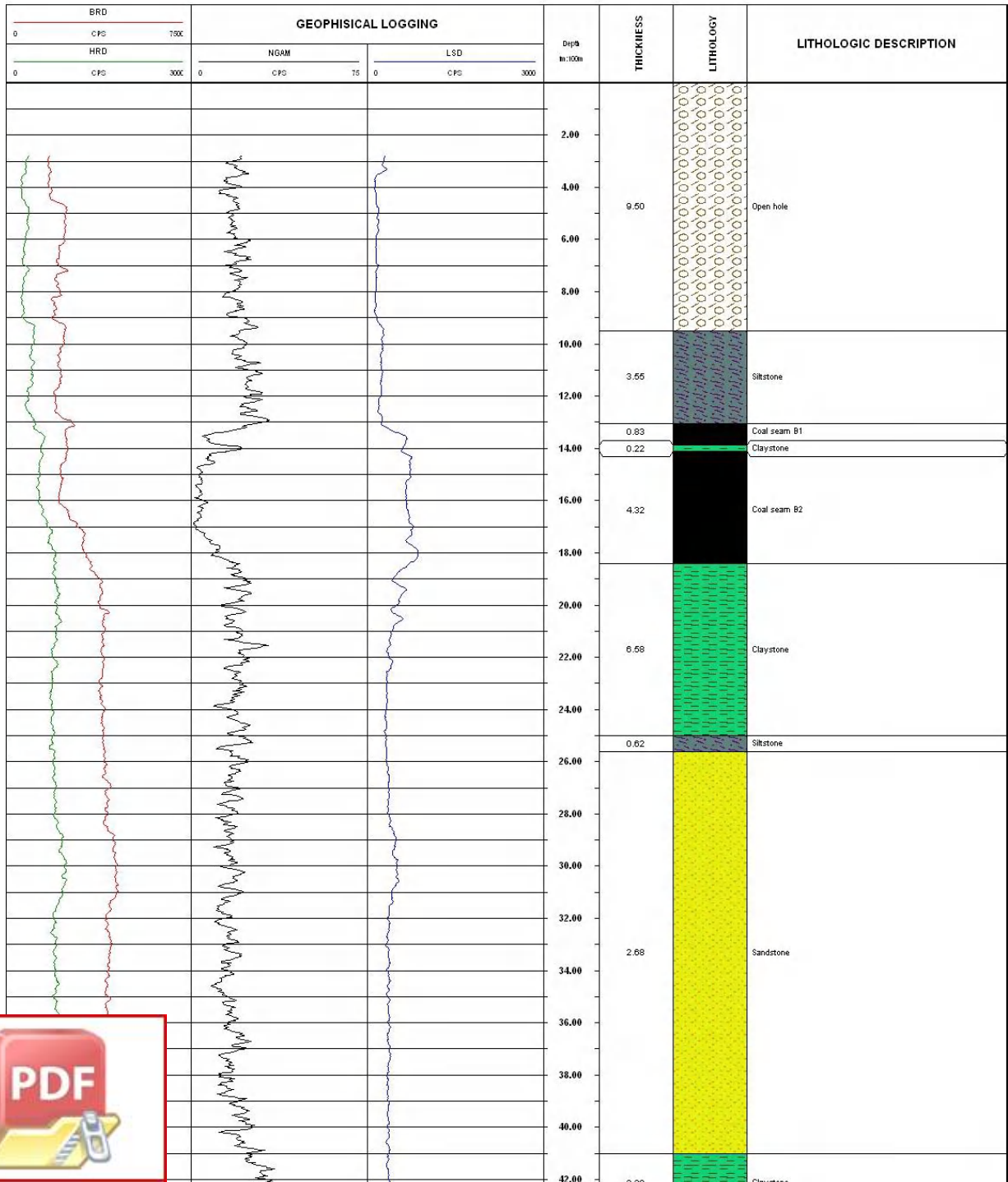
Lampiran 4

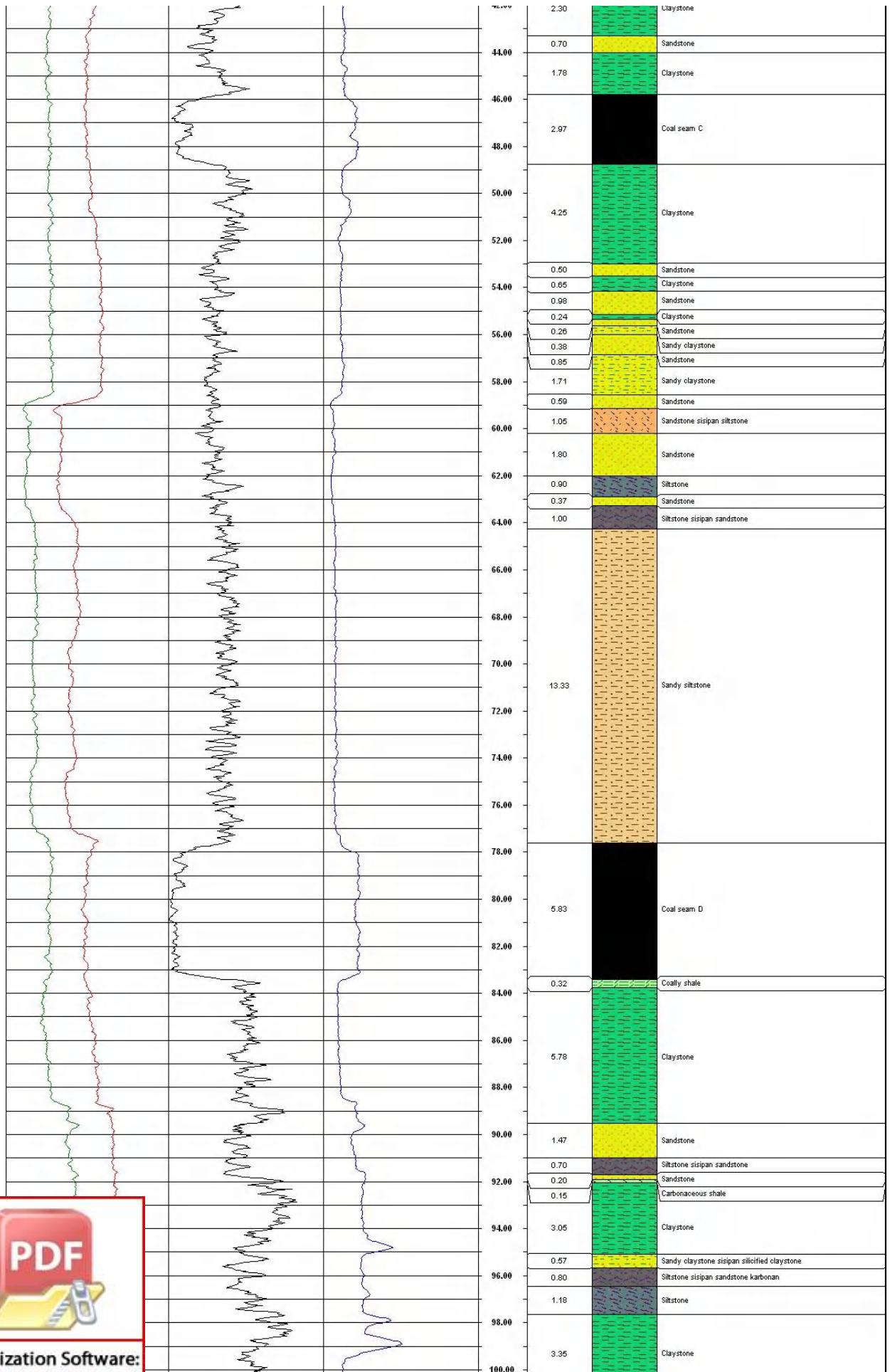


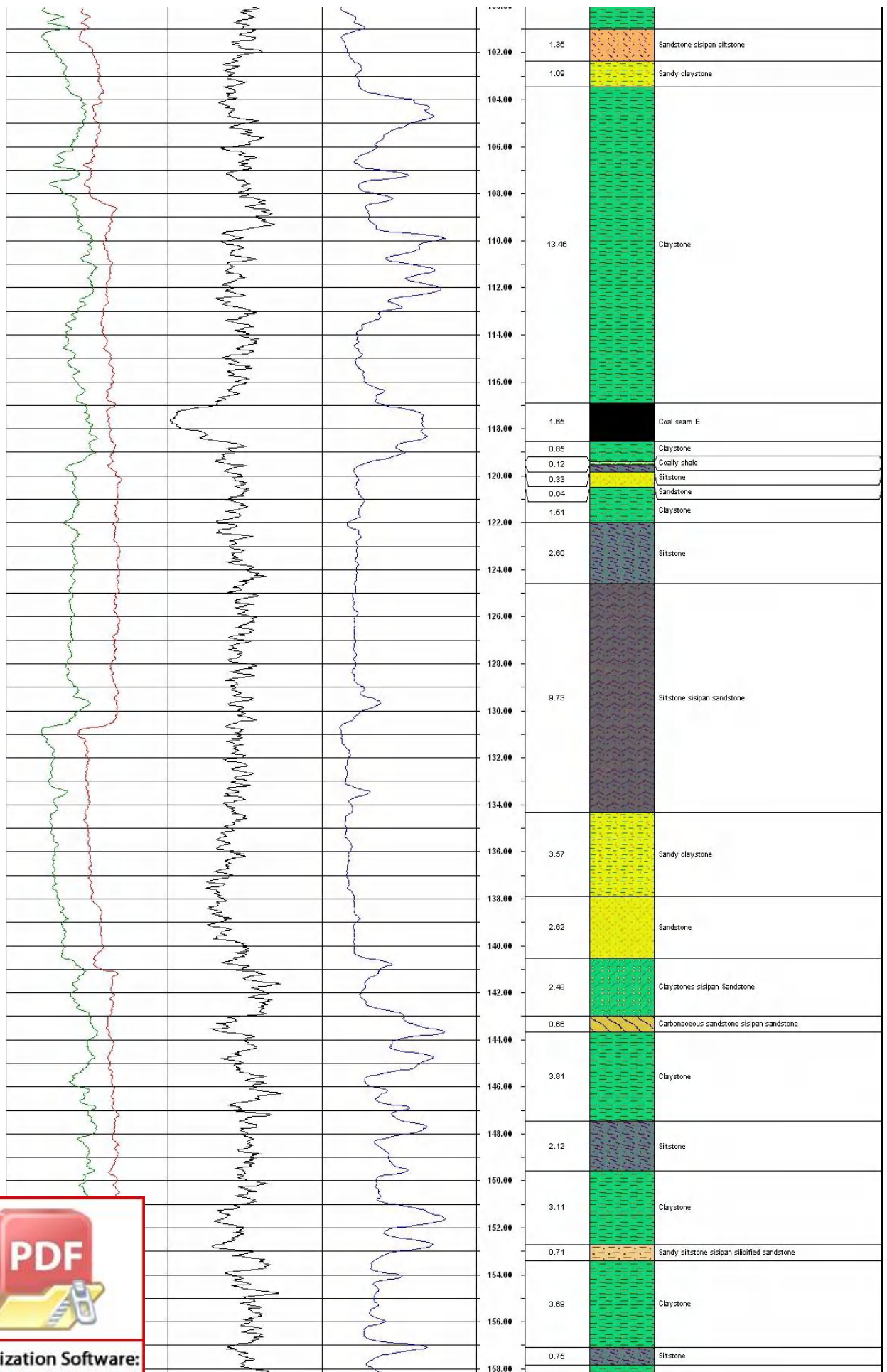
**PUSAT PENELITIAN DAN PENGEMBANGAN
TEKNOLOGI MINERAL DAN BATUBARA**

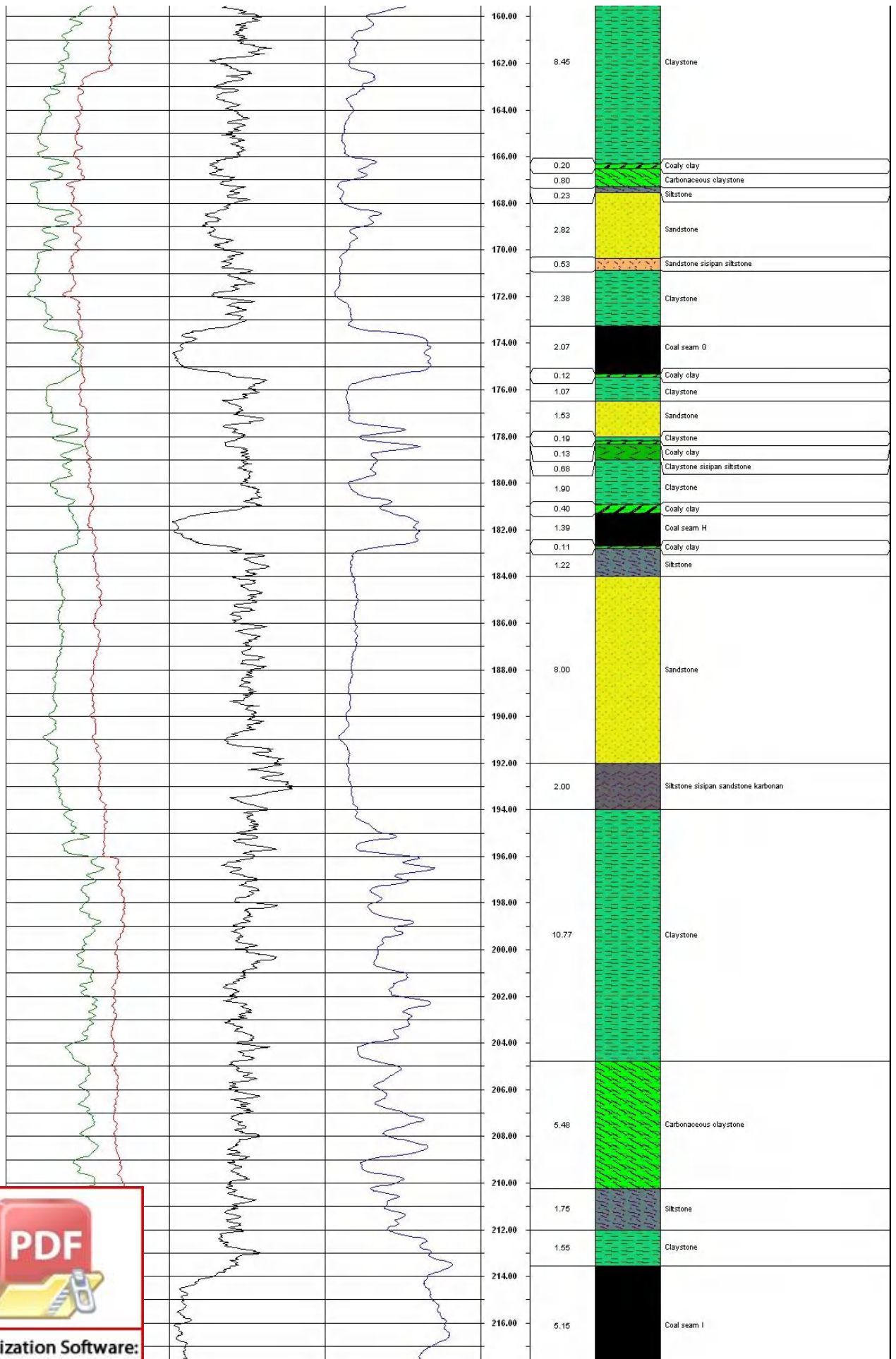
DATA LOGGING
(Underground Coal Gasification)

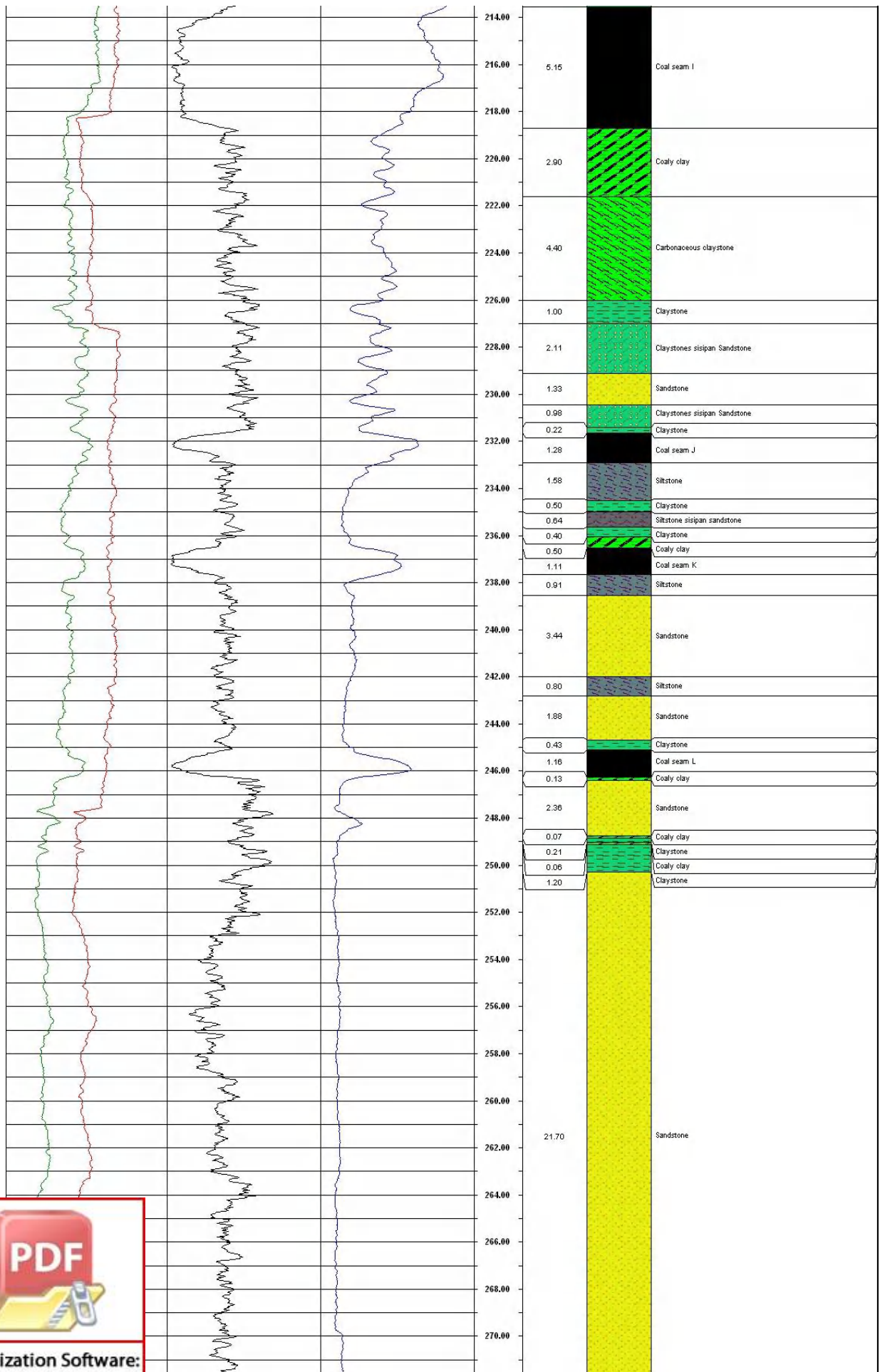
Lubang Bor : UCG 11 Koordinat X : 319698.70 Elevasi : 72,05 m Kedalaman Log : 305,13 m
 Lokasi : Macan Sakti, Koordinat Y : 9713705.10 Skala : 1:100 Total Kedalaman : 311,00 m
 Musi Banyuasin,
 Palembang,
 Sumatera Selatan

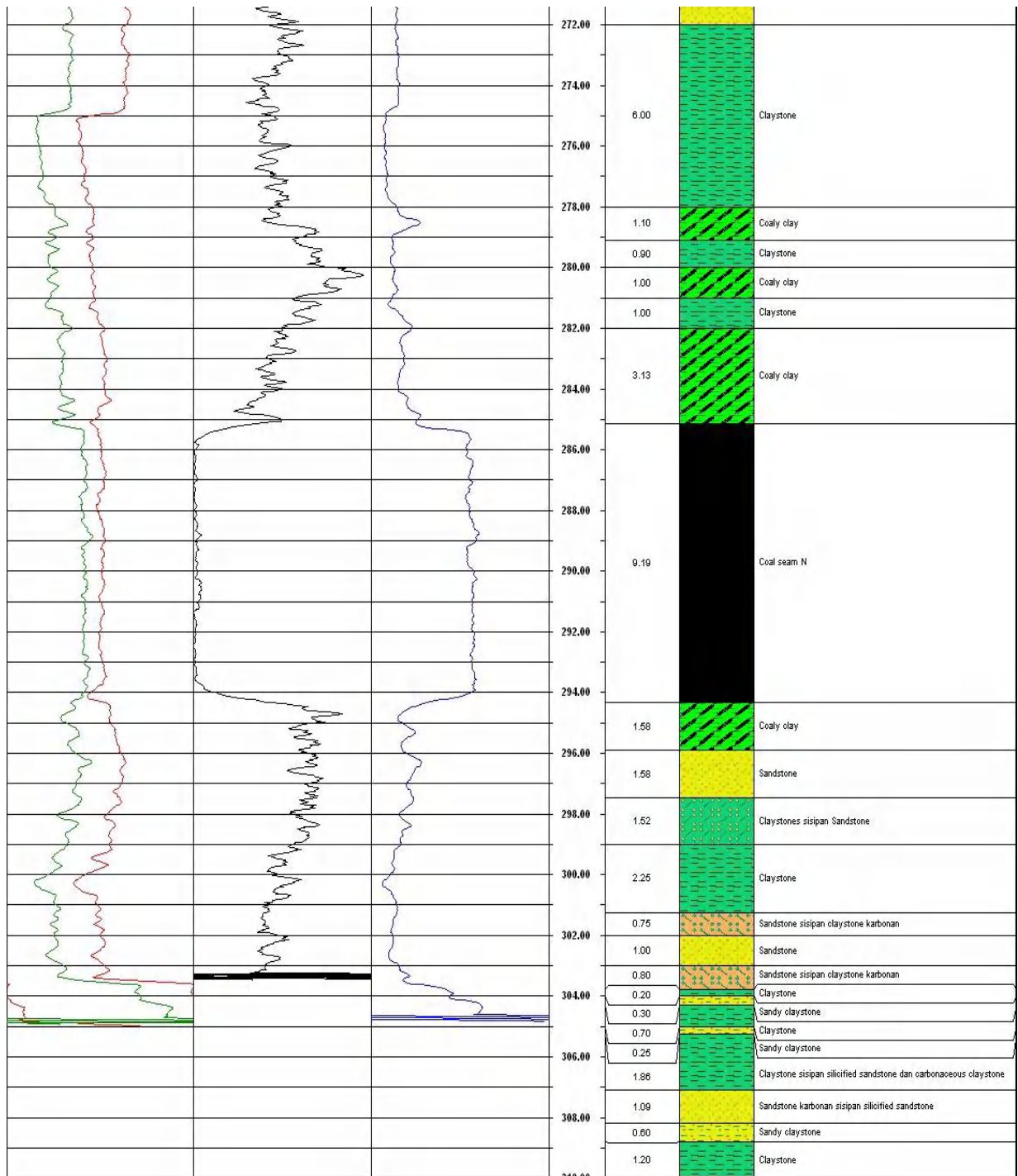












Gambar data logging sumur bor UCG 11



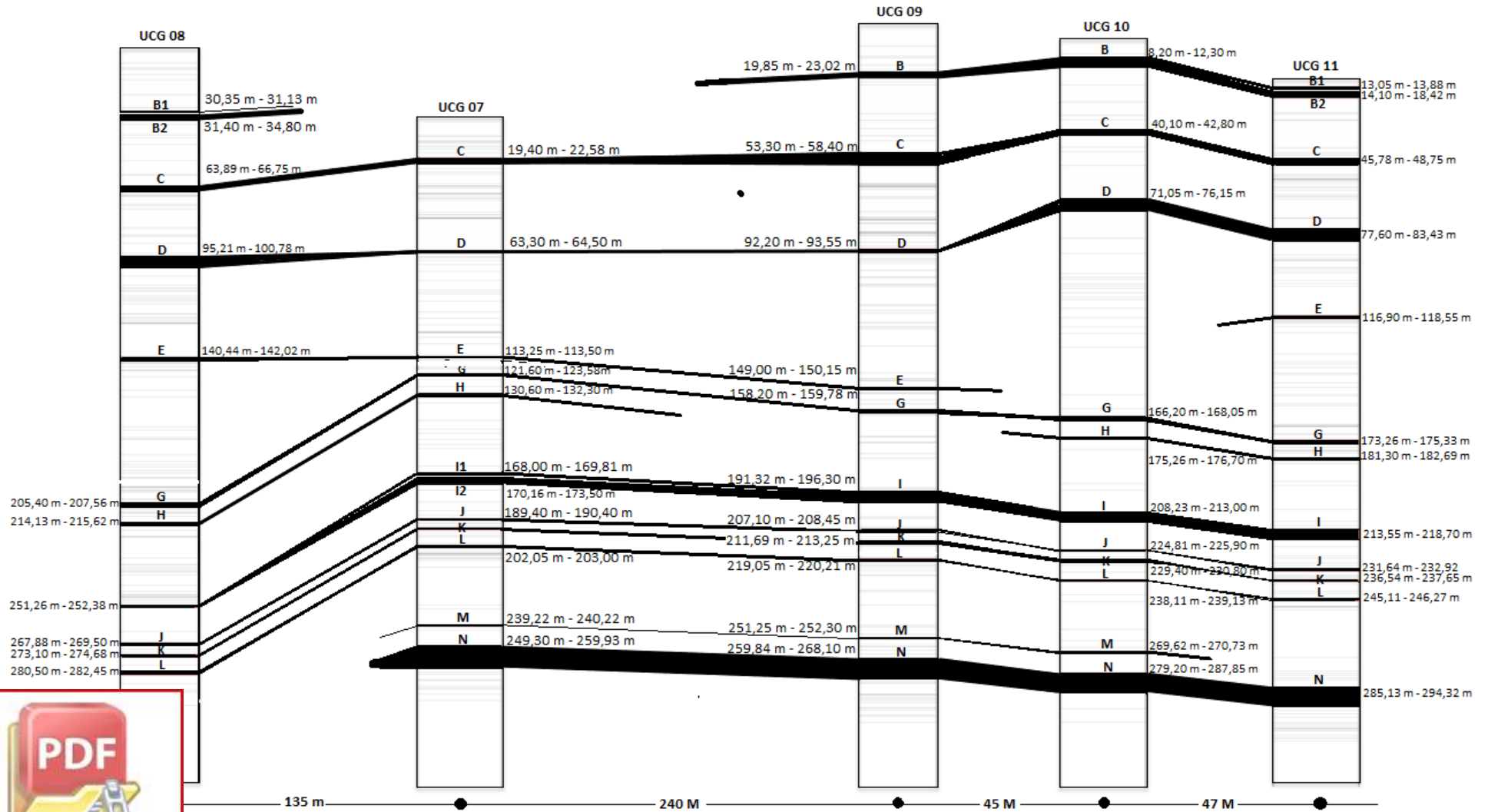
Lampiran 5

Tabel sebaran posisi dan ketebalan *seam* batubara daerah penelitian

NO	UCG 07				UCG 08				UCG 09				UCG 10				UCG 11			
	SEAM	ATAS (m)	BAWAH (m)	THICK (m)	SEAM	ATAS (m)	BAWAH (m)	THICK (m)	SEAM	ATAS (m)	BAWAH (m)	THICK (m)	SEAM	ATAS (m)	BAWAH (m)	THICK (m)	SEAM	ATAS (m)	BAWAH (m)	THICK (m)
1					B1	30.35	31.13	0.78	B	19.85	23.02	3.17	B	8.20	12.30	4.10	B1	13.05	13.88	0.83
2					B2	31.40	34.80	3.40									B2	14.10	18.42	4.32
3	C	19.40	22.58	3.18	C	63.89	66.75	2.86	C	53.30	58.40	5.10	C	40.10	42.80	2.70	C	45.78	48.75	2.97
4	D	63.30	64.50	1.20	D	95.21	100.78	5.57	D	92.20	93.55	1.35	D	71.05	76.15	5.10	D	77.60	83.43	5.83
5	E	113.25	113.50	0.25	E	140.44	142.02	1.58	E	149.00	150.15	1.15					E	116.90	118.55	1.65
6	G	121.60	123.58	1.98	G	205.40	207.56	2.16	G	158.20	159.78	1.58	G	166.20	168.05	1.85	G	173.26	175.33	2.07
7	H	130.60	132.30	1.70	H	214.13	215.62	1.49					H	175.26	176.70	1.44	H	181.30	182.69	1.39
8	I1	168.00	169.81	1.81	I	251.26	252.38	1.12	I	191.32	196.30	4.98	I	208.23	213.00	4.77	I	213.55	218.70	5.15
9	I2	170.16	173.50	3.34																
10	J	189.40	190.40	1.00	J	267.88	269.50	1.62	J	207.10	208.45	1.35	J	224.81	225.90	1.09	J	231.64	232.92	1.28
11	K	193.70	194.80	1.10	K	273.10	274.68	1.58	K	211.69	213.25	1.56	K	229.40	230.80	1.40	K	236.54	237.65	1.11
12	L	202.05	203.00	0.95	L	280.50	282.45	1.95	L	219.05	220.21	1.16	L	238.11	239.13	1.02	L	245.11	246.27	1.16
13	M	239.22	240.22	1.00					M	251.25	252.30	1.05	M	269.62	270.73	1.11				
14	N	249.30	259.93	10.63					N	259.84	268.10	8.26	N	279.20	287.85	8.65	N	285.13	294.32	9.19



Lampiran 6



Gambar korelasi *seam* batubara pada sumur UCG 2015



Lampiran 7

Tabel kualitas dan peringkat batubara daerah penelitian

SEAM	DENSITY gr/cc	NILAI KALORI/ <i>Gross Calorific Value</i>	AIR TOTAL/ <i>Total Moisture</i>	AIR LEMBAB/ <i>Moisture</i>	ABU/ <i>Ash</i>	KARBON PADAT/ <i>Fixed Carbon</i>	BELERANG TOTAL/ <i>Total Sulfur</i>	ZAT TERBANG/ <i>Volatile Matter</i>	KARBON PADAT/ <i>Fixed Carbon</i>	ZAT TERBANG/ <i>Volatile Matter</i>	NILAI KALORI/ <i>Gross Calorific Value</i>	RANK	Group
		cal/gr, adb	%, ar	% adb	% adb	% adb	% adb	% adb	% dmmf	% dmmf	cal/gr, mmmf		
B	2.42	5351.14	37.98	13.25	9.02	35.85	0.40	41.88	46.70	53.30	10793.35	Subbituminous	Subbituminous A
C	1.81	5542.11	43.77	14.86	3.58	39.20	0.34	41.18	48.29	51.71	10482.04	Subbituminous	Subbituminous B
D	1.95	5478.00	40.78	17.00	7.16	37.04	0.60	28.25	49.37	50.63	10816.02	Subbituminous	Subbituminous A
E	2.11	4655.25	32.05	14.23	18.88	33.14	0.91	33.76	50.80	49.20	10682.69	Subbituminous	Subbituminous A
G	2.17	4832.00	33.08	16.60	13.20	33.72	0.26	33.62	48.56	51.44	10251.62	Subbituminous	Subbituminous B
H	2.09	5582.67	31.32	17.81	4.70	37.90	0.38	39.59	49.23	50.77	10697.40	Subbituminous	Subbituminous A
I	2.12	3968.80	25.11	10.77	29.44	27.95	3.11	31.83	49.89	50.11	9749.19	Subbituminous	Subbituminous B
J	2.13	4910.50	23.85	12.72	36.58	23.15	2.24	27.56	39.83	60.17	10411.34	Subbituminous	Subbituminous B
K	2.04	4731.67	26.70	12.43	20.60	34.01	1.50	32.96	52.48	47.52	11222.28	Subbituminous	Subbituminous A
M	1.88	4563.67	20.93	11.94	26.88	27.64	0.36	33.54	50.19	49.81	11743.99	Bituminous	High-volatile C Bituminous
N	1.26	5249.33		14.87	12.60	36.13	0.28	36.41	50.98	49.02	11099.03	Subbituminous	Subbituminous A

