

DAFTAR PUSTAKA

- Amelia, Okta, Sussi Astuti, and Zulferiyenni. 2016. "Pengaruh Penambahan Pektin Dan Sukrosa Terhadap Sifat Kimia Dan Sensori Selai Jambu Biji Merah (*Psidium Guajava L.*)" *Prosiding Seminar Nasional Pengembangan Teknologi Pertanian*, no. September: 149–59.
- Arsyad, Muh. 2018. "Pengaruh Konsentrasi Gula Terhadap Pembuatan Selai Kelapa Muda (*Cocos Nucifera L*) Influence Of Sugar Concentration on Making Young Coconut Jam (*Cocos Nucifera L*)." *Agricululture Technology Jour* 1: 35–45.
- Azhar, Iqbal, and Nausheen H Siddiqui. 2015. "Influence of Pectin Concentrations on Physicochemical and Influence of Pectin Concentrations on Physico-." *Journal of Pharmacy and Pharmaceutical Science* 4 (6): 68–77.
- Borges, Soraia Vilela, and Universidade Federal De Lavras. 2003. "Shelf Life of Jams in Polypropylene Packaging."
- Darah, I., M. M.J. Taufiq, and S. H. Lim. 2013. "Pomelo Citrus Grandis (L.) Osbeck Peel as an Economical Alternative Substrate for Fungal Pectinase Production." *Food Science and Biotechnology* 22 (6): 1683–90. <https://doi.org/10.1007/s10068-013-0267-6>.
- Devianti, V. A., L. Sa'diyah, and A. R. Amalia. 2020. "Penentuan Mutu Pektin Dari Limbah Kulit Pisang Dengan Variasi Volume Pelarut Asam Sitrat." *Jurnal Kimia* 14 (2): 169. <https://doi.org/10.24843/jchem.2020.v14.i02.p10>.
- Dewi, Angelina Cynthia. 2017. "KUALITAS SELAI LEMBARAN DENGAN KOMBINASI EKSTRAK PEKTIN DARI ALBEDO KULIT JERUK BALI (*Citrus Grandis*) DAN BUAH NAGA MERAH (*Hylocereus Polyrhizus*)." *Skripsi*.
- Dewi, Ni Putu Arista Nacita. 2018. "STUDI PEMBUATAN SELAI DAUN KELOR (*Moringa Oleifera*)." *Politkenik Kesehatan Kemenkes Denpasar*. Politkenik Kesehatan Kemenkes Denpasar.
- F O, Adebayo, and Abdus Salam R O. 2017. "Comparative Studies on Mixed Fruit Jam Packaged in Different Local Containers." *African Journal of Food Science and Technology* 08 (04). <https://doi.org/10.14303/ajfst.2017.041>.
- Febriyanti, Razak, Abd Rahman, Sumarni, Ni Ketut. 2018. "EKSTRAKSI DAN KARAKTERISASI PEKTIN DARI KULIT BUAH KLUWIH (*Artocarpus Camansi Blanco*)." *Kovalen* 4 (April): 60–73.
- Fitri, E, N Harun, and V S Johan. 2017. "Konsentrasi Gula Dan Sari Buah Terhadap Kualitas Sirup Belimbing Wuluh (*Averrhoa Bilimbi L.*)" *JOM Faperta UR* 4 (1): 1–13.
- Fitria, Vita. 2013. *Karakterisasi Pektin Hasil Ekstraksi Dari Limbah Pisang Kepok (*Musa Balbisiana ABB*)*.
- Fitrianto, Yudha Lutfi, and Andrew Setiawan Rusdianto. 2015. "BERBAHAN BAKU DAGING BUAH JERUK PAMELO (*Citrus Maxima*) KULTIVAR NAMBANGAN JAM FORMULATION FROM PULP AND PEEL OF PAMELO (*Citrus Maxima*)" x: 1–8.
- Gaffar, Rahmah, Lahming Lahming, and Muhammad Rais. 2018. "PENGARUH KONSENTRASI GULA TERHADAP MUTU SELAI KULIT JERUK BALI (*Citrus Maxima*)." *Jurnal Pendidikan Teknologi Pertanian* 3: 117. <https://doi.org/10.26858/jptp.v3i0.5472>.

- Girma, Ermias, and Mr Teshome Worku. 2016. "Extraction and Characterization of Pectin From Selected Fruit Peel Waste." *International Journal of Scientific and Research Publications* 6 (2): 447–54. www.ijsrp.org.
- Huriah, Huriah, Nur Alam, and Abd Hamid Noer. 2019. "KARAKTERISTIK FISIK, KIMIA DAN ORGANOLEPTIK SELAI PADA BERBAGAI RASIO BUAH NAGA MERAH (*Hylocereus Polyrhizus* Britt and Rose) - GULA PASIR." *Jurnal Pengolahan Pangan* 4 (1): 16–25. <https://doi.org/10.31970/pangan.v4i1.19>.
- International Pectin Producers Association*, 2003, Pectin Commercial Production, (Online), http://www,ippa,info/commercial_production_of_pectin,htm
- Jariyah, Rosida, and Dewi Wijayanti. 2007. "Pembuatan Marmalade." Jawa Timur: Fakultas Teknik Industri, UPN.
- Juwairiyah. 2015. "Merr.), RBEDAAN AKTIVITAS ANTIBAKTERI FLAVONOID TOTAL DAN TANIN TOTAL ALBEDO BUAH JERUK BALI (*Citrus Maxima*)."
- Lagha-Benamrouche, Samira, Terkia Benaissa, and Rezki Sadoudi. 2018. "Desamerization of Bitter Jam: Biochemical and Sensory Quality." *Journal of Food Quality* 2018 (February 2016). <https://doi.org/10.1155/2018/8178059>.
- Looyrach, Jarawee, Pawadee Methacanon, Chaiwut Gamonpilas, Porntip Lekpittaya, and Amornrat Lertworasirikul. 2015. "Pomelo (*Citrus Maxima*) Peel-Inspired Property for Development of Eco-Friendly Loose-Fill Foam." *Key Engineering Materials* 659: 279–83. <https://doi.org/10.4028/www.scientific.net/KEM.659.279>.
- Lubis, Melda Damayanti. 2013. "Isolasi Senyawa Flavonoida Dari Albedo Jeruk Bali Merah (."
- Masmoudi, Manel, Souhail Besbes, Christophe Blecker, and Hamadi Attia. 2010. "Preparation and Characterization of Jellies with Reduced Sugar Content from Date (*Phoenix Dactylifera* L.) and Lemon (*Citrus Limon* L.) by-Products." *Fruits* 65 (1): 21–29. <https://doi.org/10.1051/fruits/2009038>.
- Mat Zain, Nor Fazelin. 2014. "Preparation and Characterization of Cellulose and Nanocellulose From Pomelo (*Citrus Grandis*) Albedo." *Journal of Nutrition & Food Sciences* 05 (01): 10–13. <https://doi.org/10.4172/2155-9600.1000334>.
- Mellinas, Cristina, Marina Ramos, Alfonso Jiménez, and María Carmen Garrigós. 2020. "Recent Trends in the Use of Pectin from Agro-Waste Residues as a Natural-Based Biopolymer for Food Packaging Applications." *Materials* 13 (3). <https://doi.org/10.3390/ma13030673>.
- Methacanon, Pawadee, Jaruwan Kongsin, and Chaiwut Gamonpilas. 2014. "Pomelo (*Citrus Maxima*) Pectin: Effects of Extraction Parameters Andits Properties." *Food Hydrocolloids* 35: 383–91. <https://doi.org/10.1016/j.foodhyd.2013.06.018>.
- Mohd Naeem, M. N., M. N. Mohd Fairulnizal, M. K. Norhayati, A. Zaiton, A. H. Norliza, W. Z. Wan Syuriahti, J. Mohd Azerulazree, A. R. Aswir, and S. Rusidah. 2017. "The Nutritional Composition of Fruit Jams in the Malaysian Market." *Journal of the Saudi Society of Agricultural Sciences* 16 (1): 89–96. <https://doi.org/10.1016/j.jssas.2015.03.002>.
- Mutia, Khairun, and Rafika Yunus. 2016. "Pengaruh Penambahan Sukrosa Pada Pembuatan Selai Langsat." *Jtech* 2016 (2): 80–84. <http://jurnal.poligon.ac.id/index.php/jtech/article/view/57>.

- Perina I, Satiruiyani, Felycia, ES, dan Herman H. 2007. "Ekstraksi Pektin Dari Berbagai Macam Kulit Jeruk." *Jurnal Ilmiah Widya Teknik* 6 (1): 1–10.
- Prasetyowati, Karina Permata Sari, and Healty Pesantri. 2009. "Pectin Extraction from Mango Skin." *Jurnal Teknik Kimia* 16 (4): 42–49.
- Putri, Mardiana Prasetyani, and Yunita Herwidiani Setiawati. 2015. "Analisis Kadar Vitamin C Pada Buah Nanas Segar (*Ananas Comosus* (L.) Merr) Dan Buah Nanas Kaleng Dengan Metode Spektrofotometri UV_VIS." *Jurnal Wiyata* 2 (1): 34–38.
- Quoc, L. P.T., V. T.N. Huyen, L. T.N. Hue, N. T.H. Hue, N. H.D. Thuan, N. T.T. Tam, N. N. Thuan, and T. H. Duy. 2015. "Extraction of Pectin from Pomelo (*Citrus Maxima*) Peels with the Assistance of Microwave and Tartaric Acid." *International Food Research Journal* 22 (4): 1637–41.
- Rahayu, Winiati &, and Siti Nurosiyah. 2012. "Evaluasi Sensori Dan Perkembangannya." *Evaluasi Sensori Dan Perkembangannya*, 1–36.
- Rahmawati, Ani, Widya Dwi, Rukmi Putri, and Penulis Korespondensi. 2013. "KARAKTERISTIK EKSTRAK KULIT JERUK BALI MENGGUNAKAN METODE EKSTRAKSI ULTRASONIK (KAJIAN PERBANDINGAN LAMA BLANSING DAN EKSTRAKSI) The Characteristic of Pamellofruit Peel Extract Used Ultrasonic Bath Assisted Method (Study Of Blanching And Extraction Tim." *Jurnal Pangan Dan Agroindustri* 1 (1): 26–35.
- Rana, M. S., F. Yeasmin, M. J. Khan, and M. H. Riad. 2021. "Evaluation of Quality Characteristics and Storage Stability of Mixed Fruit Jam." *Food Research* 5 (1): 225–31. [https://doi.org/10.26656/fr.2017.5\(1\).365](https://doi.org/10.26656/fr.2017.5(1).365).
- Rianto, Raswen Efendi, and Yelmira Zalfiatri. 2017. "PENGARUH PENAMBAHAN PEKTIN TERHADAP MUTU SELAI JAGUNG MANIS (*Zea Mays*.L)." *JOM Faperta UR* 4 (2): 1–6. <https://doi.org/10.2478/amsc-2014-0077>.
- Simamora, Dorlan, and Evy Rossi. 2017. "PENAMBAHAN PEKTIN DALAM PEMBUATAN SELAI LEMBARAN BUAH PEDADA (*Sonneratia Caseolaris*)." *JOM Fakultas Pertanian* 4 (2): 1–14.
- SNI 01-2238-1991 Cara Uji Pektin Kayu dan Bukan Kayu. Badan Standarisasi Nasional, Jakarta.
- SNI-3746. 2008. Selai Buah. Badan Standarisasi Nasional, Jakarta
- Sulihono, Andreas, Benyamin Tarihoran, and Tuti Emilia Agustina. 2012. "Jenis Pelarut Terhadap Ekstraksi Pektin Dari Kulit Jeruk Bali (*Citrus Maxima*)." *Jurnal Teknik Kimia* 18 (4): 1–8.
- Sundari, Dian, and Komari. 2010. "Formulasi Selai Pisang Raja Bulu Dengan Tempe Dan Daya Simpannya." *Jurnal Penelitian Gizi Dan Makanan* 33 (1): 93–101.
- Sutrisno, Clara Dea Nastasia, and Wahono Hadi Susanto. 2014. "Pengaruh Penambahan Jenis Dan Konsentrasi Pasta (Santan Dan Kacang) Terhadap Kualitas Produk Gula Merah." *J. Pangan Dan Agroindustri* 2 (1): 97–105. <http://jpa.ub.ac.id/index.php/jpa/article/view/26>.
- Tuhuloula, Abu Bakar., Lestari. Budiarty, and Etha Nur. Fitriana. 2013. "Karakterisasi Pektin Dengan Memanfaatkan Limbah Kulit Pisang Menggunakan Metode Ekstraksi." *Jurnal Konversi* 2 (1): 21–27.
- Wennberg, A. 2014. "Food and Agriculture Organization of the United Nations."

Encyclopedia of Toxicology: Third Edition, 628–30. <https://doi.org/10.1016/B978-0-12-386454-3.00988-X>.

Widyastuti, Diah Restu. 2015. “EKSTRAKSI PEKTIN KULIT JERUK BALI DENGAN MICROWAVE ASSISTED EXTRACTION DAN APLIKASINYA SEBAGAI EDIBLE FILM.” *Skripsi*.

Zakour, Olga P. 1999. “Manufacture of Low Sugar / No Sugar Jams and Jellies.” *Cornell University 2* (2): 1–8.

Zhang, Guoying, Yun Sun, Yaling Guo, Jianghong Liu, Liangyu Wu, and Jinke Lin. 2018. “The Application of Pomelo Peel as a Carrier for Adsorption of Epigallocatechin-3-Gallate.” *Journal of the Science of Food and Agriculture* 98 (11): 4135–41. <https://doi.org/10.1002/jsfa.8931>.

Zhang, Hao, Haiming Chen, Wenzhu Wang, Wenxiao Jiao, Wenxue Chen, Qiuping Zhong, Yong Huan Yun, and Weijun Chen. 2020. “Characterization of Volatile Profiles and Marker Substances by HS-SPME/GC-MS during the Concentration of Coconut Jam.” *Foods* 9 (3). <https://doi.org/10.3390/foods9030347>.

LAMPIRAN

Lampiran 1. Hasil Analisa Statistik Parameter Warna Jem Jeruk Pomelo

Tests of Between-Subjects Effects

Dependent Variable: Warna

Source	Type III Sum of Squares	df	Mean Square	F	Sig.
Corrected Model	.441 ^a	8	.055	1.492	.228
Intercept	843.922	1	843.922	22868.228	.000
Gula	.187	2	.093	2.530	.108
Pektin	.145	2	.072	1.960	.170
Gula * Pektin	.109	4	.027	.739	.577
Error	.664	18	.037		
Total	845.027	27			
Corrected Total	1.105	26			

a. R Squared = .399 (Adjusted R Squared = .132)

Multiple Comparisons

Dependent Variable: Warna

Tukey HSD

(I) Konsentrasi Gula	(J) Konsentrasi Gula	Mean Difference (I-J)	Std. Error	Sig.	95% Confidence Interval	
					Lower Bound	Upper Bound
G1	G2	.0911	.09056	.583	-.1400	.3222
	G3	.2033	.09056	.090	-.0278	.4345
G2	G1	-.0911	.09056	.583	-.3222	.1400
	G3	.1122	.09056	.446	-.1189	.3433
G3	G1	-.2033	.09056	.090	-.4345	.0278
	G2	-.1122	.09056	.446	-.3433	.1189

Based on observed means.

The error term is Mean Square(Error) = .037.

Warna

Tukey HSD^{a,b}

Konsentrasi Gula	N	Subset
		1
G3	9	5.4856
G2	9	5.5978
G1	9	5.6889
Sig.		.090

Means for groups in homogeneous subsets are displayed.

Based on observed means.

The error term is Mean Square(Error) = .037.

a. Uses Harmonic Mean Sample Size = 9.000.

b. Alpha = .05.

Multiple Comparisons

Dependent Variable: Warna

Tukey HSD

(I) Konsentrasi Pektin	(J) Konsentrasi Pektin	Mean Difference (I-J)	Std. Error	Sig.	95% Confidence Interval	
					Lower Bound	Upper Bound
P1	P2	.0789	.09056	.665	-.1522	.3100
	P3	.1789	.09056	.147	-.0522	.4100
P2	P1	-.0789	.09056	.665	-.3100	.1522
	P3	.1000	.09056	.524	-.1311	.3311
P3	P1	-.1789	.09056	.147	-.4100	.0522
	P2	-.1000	.09056	.524	-.3311	.1311

Based on observed means.

The error term is Mean Square(Error) = .037.

Warna

Tukey HSD^{a,b}

Konsentrasi Pektin	N	Subset	
		1	
P3	9		5.4978
P2	9		5.5978
P1	9		5.6767
Sig.			.147

Means for groups in homogeneous subsets are displayed.

Based on observed means.

The error term is Mean Square(Error) = .037.

a. Uses Harmonic Mean Sample Size = 9.000.

b. Alpha = .05.

Lampiran 2. Hasil Analisa Statistik Parameter Aroma Jem Jeruk Pomelo

Tests of Between-Subjects Effects

Dependent Variable: Aroma

Source	Type III Sum of Squares	df	Mean Square	F	Sig.
Corrected Model	.575 ^a	8	.072	4.005	.007
Intercept	775.699	1	775.699	43183.254	.000
Gula	.325	2	.162	9.045	.002
Pektin	.101	2	.051	2.821	.086
Gula * Pektin	.149	4	.037	2.076	.126
Error	.323	18	.018		
Total	776.598	27			
Corrected Total	.899	26			

a. R Squared = .640 (Adjusted R Squared = .480)

Multiple Comparisons

Dependent Variable: Aroma

Tukey HSD

(I) Konsentrasi Gula	(J) Konsentrasi Gula	Mean Difference (I-J)	Std. Error	Sig.	95% Confidence Interval	
					Lower Bound	Upper Bound
G1	G2	.2444*	.06318	.003	.0832	.4057
	G3	.2189*	.06318	.007	.0576	.3801
G2	G1	-.2444*	.06318	.003	-.4057	-.0832
	G3	-.0256	.06318	.914	-.1868	.1357
G3	G1	-.2189*	.06318	.007	-.3801	-.0576
	G2	.0256	.06318	.914	-.1357	.1868

Based on observed means.

The error term is Mean Square(Error) = .018.

*. The mean difference is significant at the .05 level.

Aroma

Tukey HSD^{a,b}

Konsentrasi Gula	N	Subset	
		1	2
G2	9	5.2700	
G3	9	5.2956	
G1	9		5.5144
Sig.		.914	1.000

Means for groups in homogeneous subsets are displayed.

Based on observed means.

The error term is Mean Square(Error) = .018.

a. Uses Harmonic Mean Sample Size = 9.000.

b. Alpha = .05.

Multiple Comparisons

Dependent Variable: Aroma

Tukey HSD

(I) Konsentrasi Pektin	(J) Konsentrasi Pektin	Mean Difference (I-J)	Std. Error	Sig.	95% Confidence Interval	
					Lower Bound	Upper Bound
P1	P2	.1456	.06318	.081	-.0157	.3068
	P3	.0411	.06318	.794	-.1201	.2024
P2	P1	-.1456	.06318	.081	-.3068	.0157
	P3	-.1044	.06318	.250	-.2657	.0568
P3	P1	-.0411	.06318	.794	-.2024	.1201
	P2	.1044	.06318	.250	-.0568	.2657

Based on observed means.

The error term is Mean Square(Error) = .018.

Aroma

Tukey HSD^{a,b}

Konsentrasi Pektin	N	Subset	
		1	
P2	9		5.2767
P3	9		5.3811
P1	9		5.4222
Sig.			.081

Means for groups in homogeneous subsets are displayed.

Based on observed means.

The error term is Mean Square(Error) = .018.

a. Uses Harmonic Mean Sample Size = 9.000.

b. Alpha = .05.

Lampiran 3. Hasil Analisa Statistik Parameter Rasa Jem Jeruk Pomelo

Tests of Between-Subjects Effects

Dependent Variable: Rasa

Source	Type III Sum of Squares	df	Mean Square	F	Sig.
Corrected Model	.127 ^a	8	.016	.761	.641
Intercept	893.148	1	893.148	42719.192	.000
Gula	.101	2	.051	2.421	.117
Pektin	.019	2	.010	.455	.641
Gula * Pektin	.007	4	.002	.083	.987
Error	.376	18	.021		
Total	893.651	27			
Corrected Total	.504	26			

a. R Squared = .253 (Adjusted R Squared = -.080)

Multiple Comparisons

Dependent Variable: Rasa

Tukey HSD

(I) Konsentrasi Gula	(J) Konsentrasi Gula	Mean Difference (I-J)	Std. Error	Sig.	95% Confidence Interval	
					Lower Bound	Upper Bound
G1	G2	.0756	.06816	.521	-.0984	.2495
	G3	.1500	.06816	.098	-.0240	.3240
G2	G1	-.0756	.06816	.521	-.2495	.0984
	G3	.0744	.06816	.531	-.0995	.2484
G3	G1	-.1500	.06816	.098	-.3240	.0240
	G2	-.0744	.06816	.531	-.2484	.0995

Based on observed means.

The error term is Mean Square(Error) = .021.

RasaTukey HSD^{a,b}

Konsentrasi Gula	N	Subset	
		1	
G3	9	5.6767	
G2	9	5.7511	
G1	9	5.8267	
Sig.		.098	

Means for groups in homogeneous subsets are displayed.

Based on observed means.

The error term is Mean Square(Error) = .021.

a. Uses Harmonic Mean Sample Size = 9.000.

b. Alpha = .05.

Multiple Comparisons

Dependent Variable: Rasa

Tukey HSD

(I) Konsentrasi Pektin	(J) Konsentrasi Pektin	Mean Difference (I-J)	Std. Error	Sig.	95% Confidence Interval	
					Lower Bound	Upper Bound
P1	P2	-.0056	.06816	.996	-.1795	.1684
	P3	-.0589	.06816	.669	-.2329	.1151
P2	P1	.0056	.06816	.996	-.1684	.1795
	P3	-.0533	.06816	.718	-.2273	.1206
P3	P1	.0589	.06816	.669	-.1151	.2329
	P2	.0533	.06816	.718	-.1206	.2273

Based on observed means.

The error term is Mean Square(Error) = .021.

RasaTukey HSD^{a,b}

Konsentrasi Peptin	N	Subset	
		1	
P1	9	5.7300	
P2	9	5.7356	
P3	9	5.7889	
Sig.		.669	

Means for groups in homogeneous subsets are displayed.

Based on observed means.

The error term is Mean Square(Error) = .021.

a. Uses Harmonic Mean Sample Size = 9.000.

b. Alpha = .05.

Lampiran 4. Hasil Analisa Statistik Parameter Daya Oles Jem Jeruk Pomelo

Tests of Between-Subjects Effects

Dependent Variable: Daya Oles

Source	Type III Sum of Squares	df	Mean Square	F	Sig.
Corrected Model	1.804 ^a	8	.226	4.729	.003
Intercept	249.523	1	249.523	5231.094	.000
Gula	.960	2	.480	10.065	.001
Pektin	.304	2	.152	3.191	.065
Gula * Pektin	.540	4	.135	2.829	.055
Error	.859	18	.048		
Total	252.186	27			
Corrected Total	2.663	26			

a. R Squared = .678 (Adjusted R Squared = .534)

Multiple Comparisons

Dependent Variable: Daya Oles

Tukey HSD

(I) Konsentrasi Gula	(J) Konsentrasi Gula	Mean Difference (I-J)	Std. Error	Sig.	95% Confidence Interval	
					Lower Bound	Upper Bound
G1	G2	-.4033*	.10296	.003	-.6661	-.1406
	G3	-.0067	.10296	.998	-.2694	.2561
G2	G1	.4033*	.10296	.003	.1406	.6661
	G3	.3967*	.10296	.003	.1339	.6594
G3	G1	.0067	.10296	.998	-.2561	.2694
	G2	-.3967*	.10296	.003	-.6594	-.1339

Based on observed means.

The error term is Mean Square(Error) = .048.

*. The mean difference is significant at the .05 level.

Daya Oles

Tukey HSD^{a,b}

Konsentrasi Gula	N	Subset	
		1	2
G1	9	2.9033	
G3	9	2.9100	
G2	9		3.3067
Sig.		.998	1.000

Means for groups in homogeneous subsets are displayed.

Based on observed means.

The error term is Mean Square(Error) = .048.

a. Uses Harmonic Mean Sample Size = 9.000.

b. Alpha = .05.

Multiple Comparisons

Dependent Variable: Daya Oles

Tukey HSD

(I) Konsentrasi Pektin	(J) Konsentrasi Pektin	Mean Difference (I-J)	Std. Error	Sig.	95% Confidence Interval	
					Lower Bound	Upper Bound
P1	P2	.1811	.10296	.211	-.0817	.4439
	P3	.2522	.10296	.061	-.0105	.5150
P2	P1	-.1811	.10296	.211	-.4439	.0817
	P3	.0711	.10296	.772	-.1917	.3339
P3	P1	-.2522	.10296	.061	-.5150	.0105
	P2	-.0711	.10296	.772	-.3339	.1917

Based on observed means.

The error term is Mean Square(Error) = .048.

Daya Oles

Tukey HSD^{a,b}

Konsentrasi Peptin	N	Subset	
		1	
P3	9	2.9322	
P2	9	3.0033	
P1	9	3.1844	
Sig.		.061	

Means for groups in homogeneous subsets are displayed.

Based on observed means.

The error term is Mean Square(Error) = .048.

a. Uses Harmonic Mean Sample Size = 9.000.

b. Alpha = .05.

Lampiran 5. Hasil Analisa Statistik Parameter Kadar Air Jem Jeruk Pomelo

Tests of Between-Subjects Effects

Dependent Variable: Kadar Air

Source	Type III Sum of Squares	df	Mean Square	F	Sig.
Corrected Model	84.000 ^a	8	10.500	4.200	.023
Intercept	13284.500	1	13284.500	5313.800	.000
Gula	44.333	2	22.167	8.867	.007
Pektin	10.333	2	5.167	2.067	.183
Gula * Peptin	29.333	4	7.333	2.933	.083
Error	22.500	9	2.500		
Total	13391.000	18			
Corrected Total	106.500	17			

a. R Squared = .789 (Adjusted R Squared = .601)

Multiple Comparisons

Dependent Variable: Kadar Air

Tukey HSD

(I) Konsentrasi Gula	(J) Konsentrasi Gula	Mean Difference (I-J)	Std. Error	Sig.	95% Confidence Interval	
					Lower Bound	Upper Bound
G1 (33%)	G2 (38%)	2.17	.913	.096	-3.38	4.72
	G3 (43%)	3.83*	.913	.006	1.28	6.38
G2 (38%)	G1 (33%)	-2.17	.913	.096	-4.72	.38
	G3 (43%)	1.67	.913	.216	-.88	4.22
G3 (43%)	G1 (33%)	-3.83*	.913	.006	-6.38	-1.28
	G2 (38%)	-1.67	.913	.216	-4.22	.88

Based on observed means.

The error term is Mean Square(Error) = 2.500.

*. The mean difference is significant at the 0.05 level.

Kadar Air

Tukey HSD^{a,b}

Konsentrasi Gula	N	Subset	
		1	2
G3 (43%)	6	25.33	
G2 (38%)	6	27.00	27.00
G1 (33%)	6		29.17
Sig.		.216	.096

Means for groups in homogeneous subsets are displayed.

Based on observed means.

The error term is Mean Square(Error) = 2.500.

a. Uses Harmonic Mean Sample Size = 6.000.

b. Alpha = 0.05.

Multiple Comparisons

Dependent Variable: Kadar Air

Tukey HSD

(I) Konsentrasi Pektin	(J) Konsentrasi Pektin	Mean Difference (I-J)	Std. Error	Sig.	95% Confidence Interval	
					Lower Bound	Upper Bound
P1 (0,3%)	P2 (0,6%)	-.67	.913	.752	-3.22	1.88
	P3 (0,9%)	-1.83	.913	.166	-4.38	.72
P2 (0,6%)	P1 (0,3%)	.67	.913	.752	-1.88	3.22
	P3 (0,9%)	-1.17	.913	.441	-3.72	1.38
P3 (0,9%)	P1 (0,3%)	1.83	.913	.166	-.72	4.38
	P2 (0,6%)	1.17	.913	.441	-1.38	3.72

Based on observed means.

The error term is Mean Square(Error) = 2.500.

Kadar Air

Tukey HSD^{a,b}

Konsentrasi Pektin	N	Subset	
		1	
P1 (0,3%)	6		26.33
P2 (0,6%)	6		27.00
P3 (0,9%)	6		28.17
Sig.			.166

Means for groups in homogeneous subsets are displayed.

Based on observed means.

The error term is Mean Square(Error) = 2.500.

a. Uses Harmonic Mean Sample Size = 6.000.

b. Alpha = 0.05.

Lampiran 6. Hasil Analisa Statistik Parameter Total Padatan Terlarut Jem Jeruk Pomelo

Tests of Between-Subjects Effects

Dependent Variable: TPT

Source	Type III Sum of Squares	df	Mean Square	F	Sig.
Corrected Model	615.159 ^a	8	76.895	332.718	.000
Intercept	68061.161	1	68061.161	294495.410	.000
Gula	353.079	2	176.539	763.872	.000
Pektin	75.105	2	37.553	162.487	.000
Gula * Pektin	186.975	4	46.744	202.256	.000
Error	4.160	18	.231		
Total	68680.480	27			
Corrected Total	619.319	26			

a. R Squared = .993 (Adjusted R Squared = .990)

Multiple Comparisons

Dependent Variable: TPT

Tukey HSD

(I) Konsentrasi Gula	(J) Konsentrasi Gula	Mean Difference (I-J)	Std. Error	Sig.	95% Confidence Interval	
					Lower Bound	Upper Bound
G1 (33%)	G2 (38%)	-4.84*	.227	.000	-5.42	-4.27
	G3 (43%)	-8.84*	.227	.000	-9.42	-8.27
G2 (38%)	G1 (33%)	4.84*	.227	.000	4.27	5.42
	G3 (43%)	-4.00*	.227	.000	-4.58	-3.42
G3 (43%)	G1 (33%)	8.84*	.227	.000	8.27	9.42
	G2 (38%)	4.00*	.227	.000	3.42	4.58

Based on observed means.

The error term is Mean Square(Error) = .231.

*. The mean difference is significant at the 0.05 level.

TPT

Tukey HSD^{a,b}

Konsentrasi Gula	N	Subset		
		1	2	3
G1 (33%)	9	45.64		
G2 (38%)	9		50.49	
G3 (43%)	9			54.49
Sig.		1.000	1.000	1.000

Means for groups in homogeneous subsets are displayed.

Based on observed means.

The error term is Mean Square(Error) = .231.

a. Uses Harmonic Mean Sample Size = 9.000.

b. Alpha = 0.05.

Multiple Comparisons

Dependent Variable: TPT

Tukey HSD

(I) Konsentrasi Pektin	(J) Konsentrasi Pektin	Mean Difference (I-J)	Std. Error	Sig.	95% Confidence Interval	
					Lower Bound	Upper Bound
P1 (0,3%)	P2 (0,6%)	-2.98*	.227	.000	-3.56	-2.40
	P3 (0,9%)	-3.91*	.227	.000	-4.49	-3.33
P2 (0,6%)	P1 (0,3%)	2.98*	.227	.000	2.40	3.56
	P3 (0,9%)	-.93*	.227	.002	-1.51	-.35
P3 (0,9%)	P1 (0,3%)	3.91*	.227	.000	3.33	4.49
	P2 (0,6%)	.93*	.227	.002	.35	1.51

Based on observed means.

The error term is Mean Square(Error) = .231.

*. The mean difference is significant at the 0.05 level.

TPT

Tukey HSD^{a,b}

Konsentrasi Pektin	N	Subset		
		1	2	3
P1 (0,3%)	9	47.91		
P2 (0,6%)	9		50.89	
P3 (0,9%)	9			51.82
Sig.		1.000	1.000	1.000

Means for groups in homogeneous subsets are displayed.

Based on observed means.

The error term is Mean Square(Error) = .231.

a. Uses Harmonic Mean Sample Size = 9.000.

b. Alpha = 0.05.

Lampiran 7. Hasil Analisa Statistik Parameter Kadar Vitamin C Jem Jeruk Pomelo

Tests of Between-Subjects Effects

Dependent Variable: Vitamin C

Source	Type III Sum of Squares	df	Mean Square	F	Sig.
Corrected Model	1.293E-5 ^a	8	1.616E-6	.992	.474
Intercept	.000	1	.000	281.102	.000
Gula	7.201E-6	2	3.601E-6	2.210	.139
Pektin	1.909E-6	2	9.546E-7	.586	.567
Gula * Pektin	3.819E-6	4	9.546E-7	.586	.677
Error	2.933E-5	18	1.629E-6		
Total	.001	27			
Corrected Total	4.226E-5	26			

a. R Squared = .306 (Adjusted R Squared = -.002)

Multiple Comparisons

Dependent Variable: Vitamin C

Tukey HSD

(I) Konsentrasi Gula	(J) Konsentrasi Gula	Mean Difference (I-J)	Std. Error	Sig.	95% Confidence Interval	
					Lower Bound	Upper Bound
G1 (33%)	G2 (38%)	.001096	.0006017	.191	-.000440	.002631
	G3 (43%)	.001096	.0006017	.191	-.000440	.002631
G2 (38%)	G1 (33%)	-.001096	.0006017	.191	-.002631	.000440
	G3 (43%)	.000000	.0006017	1.000	-.001536	.001536
G3 (43%)	G1 (33%)	-.001096	.0006017	.191	-.002631	.000440
	G2 (38%)	.000000	.0006017	1.000	-.001536	.001536

Based on observed means.

The error term is Mean Square(Error) = 1.63E-006.

Vitamin C

Tukey HSD^{a,b}

Konsentrasi Gula	N	Subset
		1
G2 (38%)	9	.003753
G3 (43%)	9	.003753
G1 (33%)	9	.004849
Sig.		.191

Means for groups in homogeneous subsets are displayed.

Based on observed means.

The error term is Mean Square(Error) = 1.63E-006.

a. Uses Harmonic Mean Sample Size = 9.000.

b. Alpha = 0.05.

Multiple Comparisons

Dependent Variable: Vitamin C
Tukey HSD

(I) Konsentrasi Pektin	(J) Konsentrasi Pektin	Mean Difference (I-J)	Std. Error	Sig.	95% Confidence Interval	
					Lower Bound	Upper Bound
P1 (0,3%)	P2 (0,6%)	.000470	.0006017	.719	-.001066	.002006
	P3 (0,9%)	-.000156	.0006017	.964	-.001691	.001380
P2 (0,6%)	P1 (0,3%)	-.000470	.0006017	.719	-.002006	.001066
	P3 (0,9%)	-.000626	.0006017	.562	-.002161	.000910
P3 (0,9%)	P1 (0,3%)	.000156	.0006017	.964	-.001380	.001691
	P2 (0,6%)	.000626	.0006017	.562	-.000910	.002161

Based on observed means.

The error term is Mean Square(Error) = 1.63E-006.

Vitamin C

Tukey HSD^{a,b}

Konsentrasi Pektin	N	Subset
		1
P2 (0,6%)	9	.003753
P1 (0,3%)	9	.004223
P3 (0,9%)	9	.004379
Sig.		.562

Means for groups in homogeneous subsets are displayed.

Based on observed means.

The error term is Mean Square(Error) = 1.63E-006.

a. Uses Harmonic Mean Sample Size = 9.000.

b. Alpha = 0.05.

Lampiran 8. Hasil Analisa Statistik Parameter Kadar Serat Kasar Jem Jeruk Pomelo

Tests of Between-Subjects Effects

Dependent Variable: Serat Kasar

Source	Type III Sum of Squares	df	Mean Square	F	Sig.
Corrected Model	.246 ^a	8	.031	.766	.641
Intercept	20.108	1	20.108	500.468	.000
Gula	.026	2	.013	.319	.734
Pektin	.211	2	.106	2.628	.126
Gula * Pektin	.009	4	.002	.059	.992
Error	.362	9	.040		
Total	20.716	18			
Corrected Total	.608	17			

a. R Squared = .405 (Adjusted R Squared = -.124)

Multiple Comparisons

Dependent Variable: Serat Kasar
Tukey HSD

(I) Konsentrasi Gula	(J) Konsentrasi Gula	Mean Difference (I-J)	Std. Error	Sig.	95% Confidence Interval	
					Lower Bound	Upper Bound
G1 (33%)	G2 (38%)	.09250	.115728	.713	-.23061	.41561
	G3 (43%)	.04667	.115728	.915	-.27645	.36978
G2 (38%)	G1 (33%)	-.09250	.115728	.713	-.41561	.23061
	G3 (43%)	-.04583	.115728	.918	-.36895	.27728
G3 (43%)	G1 (33%)	-.04667	.115728	.915	-.36978	.27645
	G2 (38%)	.04583	.115728	.918	-.27728	.36895

Based on observed means.

The error term is Mean Square(Error) = .040.

Serat Kasar

Tukey HSD^{a,b}

Konsentrasi Gula	N	Subset
		1
G2 (38%)	6	1.01083
G3 (43%)	6	1.05667
G1 (33%)	6	1.10333
Sig.		.713

Means for groups in homogeneous subsets are displayed.

Based on observed means.

The error term is Mean Square(Error) = .040.

a. Uses Harmonic Mean Sample Size = 6.000.

b. Alpha = 0.05.

Multiple Comparisons

Dependent Variable: Serat Kasar
Tukey HSD

(I) Konsentrasi Pektin	(J) Konsentrasi Pektin	Mean Difference (I-J)	Std. Error	Sig.	95% Confidence Interval	
					Lower Bound	Upper Bound
P1 (0,3%)	P2 (0,6%)	-.17250	.115728	.340	-.49561	.15061
	P3 (0,9%)	-.26083	.115728	.115	-.58395	.06228
P2 (0,6%)	P1 (0,3%)	.17250	.115728	.340	-.15061	.49561
	P3 (0,9%)	-.08833	.115728	.734	-.41145	.23478
P3 (0,9%)	P1 (0,3%)	.26083	.115728	.115	-.06228	.58395
	P2 (0,6%)	.08833	.115728	.734	-.23478	.41145

Based on observed means.

The error term is Mean Square(Error) = .040.

Serat Kasar

Tukey HSD^{a,b}

Konsentrasi Pektin	N	Subset
		1
P1 (0,3%)	6	.91250
P2 (0,6%)	6	1.08500
P3 (0,9%)	6	1.17333
Sig.		.115

Means for groups in homogeneous subsets are displayed.

Based on observed means.

The error term is Mean Square(Error) = .040.

a. Uses Harmonic Mean Sample Size = 6.000.

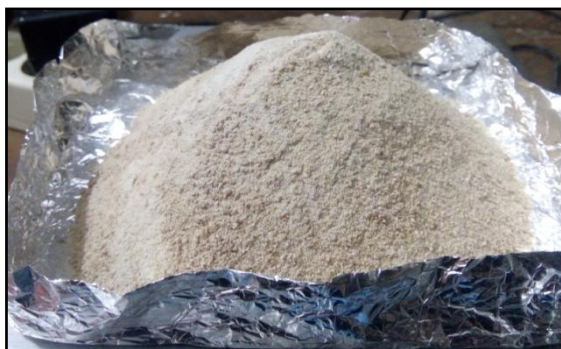
b. Alpha = 0.05.

Lampiran 9. Uji Lanjut Beda Nyata Jujur (BNJ) pada Parameter Interaksi Total Padatan Terlarut

Formulasi	Nilai Rata-rata Total Tadatan Terlarut
F7	56.00 ^a
F8	55.20 ^a
F9	52.27 ^b
F6	51.73 ^b
F3	51.47 ^b
F5	51.47 ^b
F4	48.27 ^c
F2	46.00 ^d
F1	39.47 ^e

Lampiran 10. Dokumentasi Penelitian

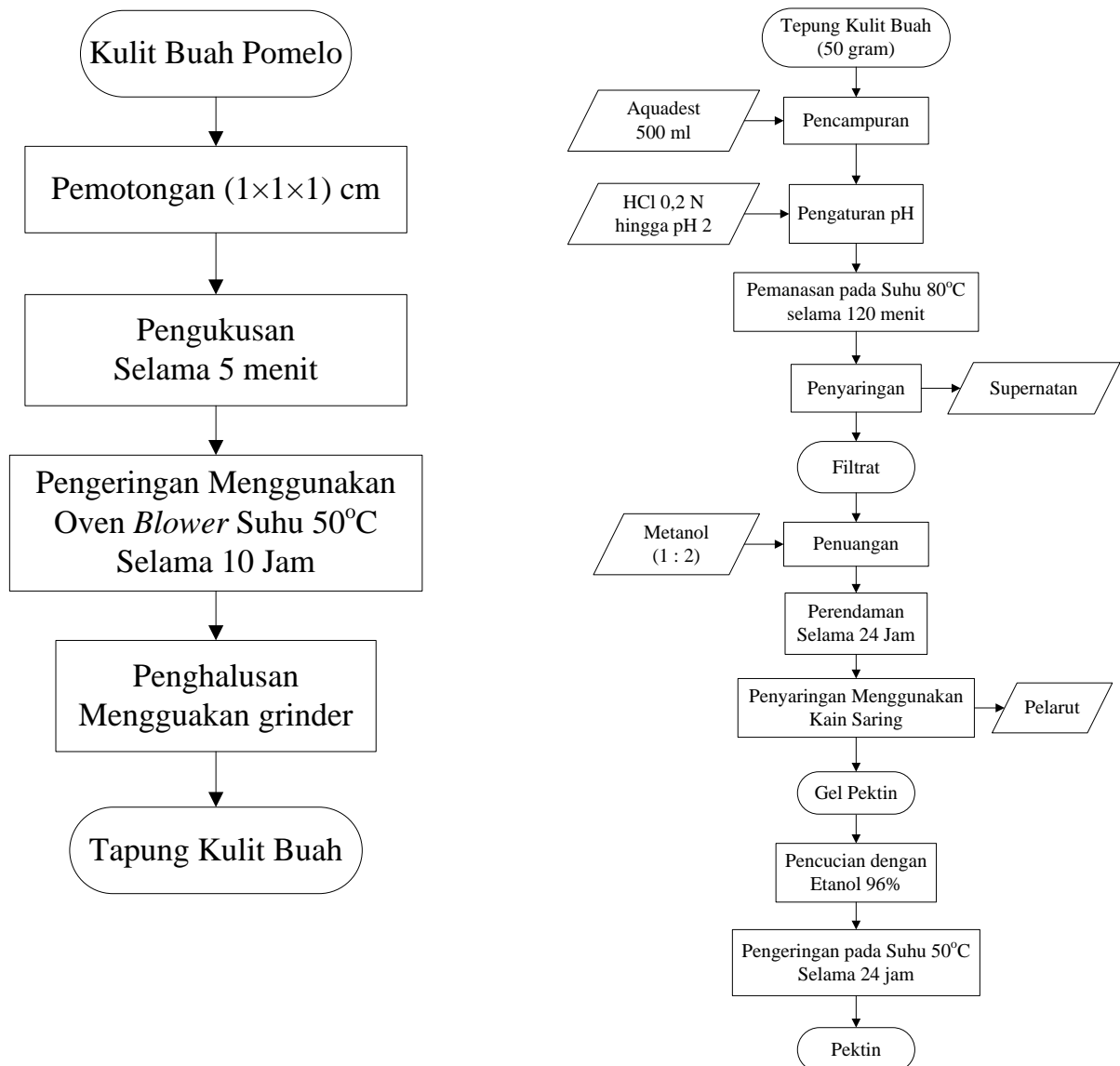
Proses Pengendapan dan Pengeringan Pektin



Proses Analisa Karakteristik Pektin Kulit Jeruk Pomelo



Lampiran 11. Diagram Alir Pembuatan Pektin Kulit Buah Pomelo



Lampiran 12. Diagram Alir Pembuatan Jem Buah Pomelo