

DAFTAR PUSTAKA

- Abdul Salam Abubakar, Salina HJ. Kassim, Mohammed B. Yusoff. (2015). Journal Financial Development, Human Capital Accumulation and Economic Growth: Empirical Evidence from the Economic Community of West African States (ECOWAS). Global Conference on Business & Social Science-2014, GCBSS-2014, 15th & 16th December, Kuala Lumpur. Available online at www.sciencedirect.com.
- Acemoglu, D., & Robinson, J. A. (2002). The political economy of the Kuznets curve. *Review of development economics*, 6(2), 183-203.
- ADB. (2004). *Impact Evaluation Study on ADB's Rural Credit Assistance in Bangladesh, People's Republic of China (PRC), Indonesia, Nepal, Philippines, Sri Lanka, and Thailand*. Asian Development Bank, Manila.
- _____, 2008. ADB Assistance for Domestic Capital Market Development. Special Evaluation Study. Asian Development Bank, Manila.
- Adisasmita R, (1994). Beberapa Dimensi Ekonomi Regional, Program Pascasarjana Universitas Hasanuddin, Makassar.
- Aditi Kapoor, (2014). *Financial inclusion and the future of the Indian economy*. journal homepage: www.elsevier.com/locate/futures. *Alternative Futures*, B 177, East of Kailash, New Delhi 110065, India.
- Aduagna, H. (2013). Determinants of Private Investment in Ethiopia. *Journal of Economics and Sustainable Development*, Vol.4, No.20, 2013. www.iiste.org ISSN 2222-1700 (Paper) ISSN 2222-2855 (Online).
- Agenor, P., M.K. Nabli and Y.M. Tarik, 2005. "Public Infrastructure and Private Investment in the Middle East and North Africa," World Bank Research Working Paper 3661, Washington.
- Agussalim, (2009). *Mereduksi Kemiskinan* (Sebuah Proposal Baru untuk Indonesia). Penerbit Nala Cipta Litera Bekerjasama Pusat Studi Kebijakan dan Manajemen Pembangunan Universitas Hasanuddin, Makassar.
- Aghion, P., and P. Bolton. 1997. "A Theory of Trickle-Down Growth and Development." *Review of Economic Studies* 64:151-72.
- AGRAWAL, N. (1996) The Benefits of Growth for Indonesian Workers. *Policy Research Working Paper, World Bank*, Vol. 6.
- _____, M. S. (1976). Inequality, poverty and development. *Journal of development economics*, 3(4), 307-342.



- Ali, I. and J. Zhuang. (2007). *Inclusive Growth toward a Prosperous Asia: Policy Implications. ERD Working Paper Series, No.97.*
- Ali, I. (2007). *Pro-Poor to Inclusive Growth: Asian Prescriptions. ERD Policy Brief, No.48.*
- Ali, I. and H. H. Son. (2007). *Measuring Inclusive Growth. Asian Development Review, Vol. 24, No.1, p.11–31.*
- Ali, A.A. and Thorbecke, E. (2000). The State and Path of Poverty in sub-Saharan Africa: some preliminary results, *Journal of African Economies*, 9, 9-40.
- Amartya Sen's, (1999) *Development as Freedom*. New York: Alfred A. Knopf : 366 pp.ISBN 0 375 40169 0.
- Anas Iswanto Anwar, (2016). Analisis Financial Inclusion dan Pengaruhnya Terhadap Pertumbuhan Ekenomi dan Kemiskinan di Indonesia. Dalam Disertasi Program Doktor Ilmu Ekonomi Fakultas Ekonomi dan Bisnis Universitas Hasanuddin Makassar.
- Anas Iswanto Anwar; Uppun Paulus; Reviane Indraswati Tri Abdi. (2017). The Role of Financial Inclusion to Poverty Reduction in Indonesia. *IOSR Journal of Business and Management (IOSR-JBM)*. Volume 18, Issue 6.Ver. III (Jun. 2016), PP 37-39.
- Anderloni, L., & Carluccio, E. (2006). Access to bank accounts and payment services. In: L. Anderloni, E. Carluccio, and M. Braga, *New frontiers in banking services: Emerging needs and tailored products for untapped markets*. Berlin: Springer Verlag.
- Antwi, S & Zhao, X 2013, 'Impact of foreign direct investment and economic growth in Ghana: A cointegration analysis', *International Journal of Business and Social Research*, vol. 3, no. 1, pp. 64-74.
- Armendariz, B. and J. Morduch. (2010). *The Economics of Microfinance*. 2nd Edition. London:The MIT Press.
- Ari Mulianta Ginting. (2012), *Pengaruh Peetumbuhan Ekonomi dan Pertumbuhan*, Penerbit Erlangga, Jakarta.
- Australian Securities and Investment Commission (2014). <http://www.financialliteracy.gov.au/media/546585/report-03_nationalfinancial-literacy-strategy-2014-17.pdf>, Accessed 31.10.15.
- Assa, M and Abdi, E. K. (2012). Selected Macroeconomic Variables Affecting Private nvestment in Malawi. MPRA Paper No. 40698, posted 16. August 2012 12: 28 UTC Online at <https://mpra.ub.uni-muenchen.de/40698/>.



- Augustine, K. (2014). Determinants of Private Sector Investment in Ghana, 1970-2011. A Thesis Submitted to the Department of Economics, Kwame Nkrumah University of Science and Technology, in partial fulfillment of the requirements for the degree of Master of Philosophy in Economics Faculty of Social Sciences College of Art and Social Sciences.
- Athukorala, P 2003, 'The impact of foreign direct investment for economic growth: a case study in Sri Lanka', in 9th International Conference on Sri Lanka Studies, vol. 92, pp. 1-21.
- Ayyagari M, Beck T and Hoseini M (2013), "Finance and Poverty: Evidence from India" Discussion Papers in its series CEPR Discussion Papers with number 9497.
- Badawi, A., 2003. "Private Capital Formation and Public Investment in Sudan: Testing the Substitutability and Complementarity Hypothesis in a Growth Framework," Institute for Development Policy and Management (IDPM), University of Manchester, Manchester.
- Bahagijo, Sugeng, 2014. *Pajak Super Kepada Superkaya Perancis dan Pemilu Indonesia 2014* (Analisa INFID No 1);
- Bank Indonesia. (2013). Indeks Keuangan Inklusif. Diakses dari <http://www.bi.go.id/perbankan/keuanganinklusif/indikator/indeks/contents/default.aspx>.
- Bank Indonesia. (2014). Indeks Keuangan Inklusif. Diakses dari <http://www.bi.go.id/perbankan/keuanganinklusif/indikator/indeks/contents/default.aspx>.
- Baharuddin, (2016). Pengeluaran Pemerintah dan Tingkat Kemiskinan Kabupaten/Kota di Provinsi Sulawesi Selatan Tahun 2004-2014. Dalam Disertasi Program Doktor Ilmu Ekonomi Fakultas dan Bisnis Universitas Hasanuddin Makassar.
- Barro, R. and X. Sala-i-Martin (2004). —Economic GrowthII, 2Nd edition, MIT Press.
- Barro, Robert J. "Inequality and Growth in a Panel of Countries." Journal of Economic Growth. Boston: Mar 2000. 5(1). Pp 5-32.
- Barro, Robert J., and Lee, Jong Wha. "International Measures of Schooling Years and Schooling Quality." American Economic Review, May 1996, 86(2), pp. 218-23.
- Barro, R. and Sala-I-Martin (1995). —Economic Growth.II New York: McGraw Hill.
- ...E., Kaukab, R.S., Yu III, V.P.B. (2004). —The World Development Report.



- Beck T, Demirguc-Kunt A, Soledad M, Peria M. (2007). Reaching out: access to and use of banking services across countries. *Journal of Financial Economics* 85(1): 234–266.
- Beck, T., & Demirguc-Kunt, A. (2008). *Access to finance: an unfinished agenda. The World Bank Economic Review*, 22(3), 383–396.
- Bell R, Harper A, Mandivenga D. 2002. Can Commercial Banks do Microfinance? Lessons from the Commercial Bank of Zimbabwe and the Co-operative Bank of Kenya. *Small Enterprise Development Journal* 13(4): 35–46.
- Benjamin K. Chibuye (2013) dalam Disertasi, Investasi Publik, investasi swasta dan pertumbuhan ekonomi di Zambia.
- Bikker, J. A., Shaffer, S., & Spierdijk, L. (2009). The Panzar–Rosse revenue test: To scale or not to scale, 22nd Australasian Finance and Banking Conference, 21 August.
- Bank Indonesia. (2014). *Booklet Financial Inclusion*. Jakarta: Bank Indonesia.
- Boediono, 1999. *Teori Pertumbuhan Ekonomi*, Penerbit BPFE, Yogyakarta.
- Boopen, S. and A.J. Khadaroo, 2006. “Transport Capital and Private Capital Formation in Mauritius: Testing the Substitutability and Complementarity Hypotheses,” Working Paper 341, The University of Mauritius.
- Bourguignon, Francois (2004). Poverty-Growth-Inequality Triangle, Paper was presented at the Indian Council for Research on International Economic Relation, New Delhi, on Februari 4, 2004. Retrieved February 10, 2005 from <http://web.worldbank.org/wbsite/external/topics/extpovert/expqji/>.
- BPS (2016). *Penghitungan dan Analisis Kemiskinan Makro Indonesia*. Penerbit Badan Pusat Statistik.
- Brinca, P., 2006. *The Impact of Public Investment in Sweden: A VAR Approach*, Msc in Economics Thesis, Stockholm University.
- Bruhn, M and I. Love (2013) “The economic impact of banking the unbanked: evidence from Mexico” *Journal of Finance* forthcoming
- Camara & Tuesta. (2014). *Measuring Financial Inclusion: A Multidimensional Index*. BBVA Research. Working Paper. WP/14/26. Madrid.
- Carbo, S., Gardner, E., & Molyneux, P. (2007). Financial exclusion in Europe. *Public Money & Management*, 27(1), 21-27.
- Carter, Alan and Stephen Matthews, *How tax can reduce inequality*, OECD 2014, www.oecdobserver.org/news/fullstory.php/aid/3782/How_tax_can_reduce_inequality.html -- Akses 22 Januari 2014, 14:53;



- Castels, M (1998). *The Information Age: Economy, Society, and Culture*. Vol. III: End of Millennium, Oxford: Blackwell.
- Collins, D., Morduch, J., Rutherford, S., & Ruthven, O. (2009). *Portfolios of the poor: How the World's poor live on two dollars a day*. Princeton, NJ: Princeton University Press.
- Christopoulos, D. K. & Tsionas, E. G. (2003). Financial development and economic growth: Evidence from panel unit root and co-integration test. *Journal of Development Economics*. 7, 55-74.
- Cyn-Young Park and Rogelio V. Mercado, Jr (2015), "Financial Inclusion, Poverty, and Income Inequality in Developing Asia" ADB Economics Working Paper Series No 426.
- Datt, G., and M. Ravallion. 1992. "Growth and Redistribution Components of Changes in Poverty Measures: A Decomposition with Applications to Brazil and India in the 1980s." *Journal of Development Economics* 38(2):275–95.
- Demirgüç-Kunt, A., T. Beck and P. Honohan. (2008). *Finance for All? Policies and Pitfalls in Expanding Access*. Washington D.C.: A World Bank Policy Research Report.
- Demirguc-Kunt, and R. Levine (2009). *Finance and Inequality: Theory and Evidence*: National Bureau of Economic Research : 15275.
- Demirguc-Kunt, A., & Klapper, L. (2012). *Measuring financial inclusion: The GlobalFindex Database*. Policy Research Working Paper WPS 6025, World Bank: Development Research Group.
- Determinants of Private Investment: A Systematic Review. *International Journal of Economics, Finance and Management Sciences*. Vol. 4, No. 2, 2016, pp. 52-56. doi: 10.11648/j.ijefm.20160402.13 Department of Economics, Jimma University, Jimma, Ethiopia.
- Devlin, J. F. (2005). A detailed study of financial exclusion in the United Kingdom. *Journal of Consumer Policy*, 28, 75-108.
- Dev, S. M. (2006). Financial inclusion: Issues and challenges. *Economic and political weekly*, 4310-4313.
- Dickens WT, 2006. *The Effect of Investing in Early Education in Economic Growth*. Working Paper (The Brookings Institution).
- Dollar, D. & Kraay, A. (2002) Growth is good for the poor. *Journal of Economic Growth*, 7, 195-225.

Demirgüç-Kunt A. 2007. Research Programme on Access to Finance. Presentation at the World Bank, Washington, DC.



- Duncan, Denvil dan Klara Sabirianova Peter, *Unequal Inequalities: Do Progressive Taxes Reduce Income Inequality?*, Boon Germany: IZA DP No. 6910, October 2012.
- Durlauf, Johnson, Temple. (2005). *Economic Growth*, volume 1, part A pp 555-677 from Elsevier.
- Dupas, P., & Robinson, J. (2009). *Savings constraint and microenterprise development: Evidence from a field experiment in Kenya*. NBER Working Paper 14693, Cambridge, MA: National Bureau of Economic Research.
- Dupas, P., & Robinson, J. (2011). *Why don't the poor save more? Evidence from health savings experiments*. NBER Working Paper 17255, Cambridge, MA: National Bureau of Economic Research.
- Djoumessi, ECK. (2009). *Financial Development and Economic Growth: A Comparative Study between Cameroon and South Africa*. Master Thesis.
- Easterly, W. (2000). *The Effect of IMF and World Bank Programs on Poverty*, World Bank, *mimeo*, Washington DC: World Bank.
- Easterly, W., R. Islam, and J. Stiglitz. 2000. "Shaken and Stirred: Explaining Growth Volatility." *In Macroeconomic Paradigms for Less Developed Countries*. World Bank, Washington, DC.
- Egbo, OP 2012, 'Bivariate causality analysis on the impact of fdi inflows and economic growth in Nigeria', *Journal of Internet Banking and Commerce*, vol. 16, no. 3, p. 1.
- Eita, JH and Jordan, AC. (2007). *A Causality Analysis between Financial Development and Economic Growth for Botswana*. Department of Economics Working Paper Series.
- Ely Steven Ingratubun, (2019). *Economic Growth and Poverty In Eastern Indonesia*. *Scientific Research Journal (SCIRJ)*, Volume VII, Issue I, January 2019 47 ISSN 2201-2796 DOI: [10.31364/SCIRJ/v7.i1.2019.P0119604](http://dx.doi.org/10.31364/SCIRJ/v7.i1.2019.P0119604)
<http://dx.doi.org/10.31364/SCIRJ/v7.i1.2019.P0119604>.
- European Union (2008). *Financial services provision and prevention of financial exclusion*. EU.
- Fadun, O. S. (2013). Risk management in the financial services sector: The derivatives option. *International Journal of Humanities and Social Science Invention*, 2(1), 22-31.
- , M (1999). Reducing poverty, not inequality. *THE PUBLIC INTEREST* Number 137, Fall 1999 <http://www.nber.org/feldstein/pi99.html>.



- Fields, G. 2001. *Distribution and Development: A New Look at the Developing World*. NY: Russell Sage Foundation, and Cambridge, MA: MIT Press.
- Field, G. (1980). *Poverty, Inequality and Development*, Cambridge University Press, 1980, pp. 46-56.
- Fozzard, Adrian. 2001. *The Basic Budgeting Problem: Approaches to Resources Allocation in the Public Sector and Their Implications for Pro Poor Budgeting*, London: Overseas Development Institute.
- Fouda Ekobena S.Y. (2014), "Does Monetary Policy Really Affect Poverty?" Article Workshop on Monetary Policy and Inequality April 3-4, 2014 Federal Reserve Bank of Atlanta
- Fosu, K. A. (2008). Inequality and the Growth-Poverty Nexus: Specification Empirics Using Africa Data, *Applied Economics Letters*, 2008, 15, 563-566.
- Flug, K., A. Spilimbergo, and E. Wachtenheim (1998). "Investment in Education: Do Economic Volatility and Credit Constraints Matter?" *Journal of Development Economics* 55 (2): 465–81.
- Galiani, S., P. Gertler and E. Schargrotsky, 2005. "Water for Life: The Impact of Privatization of Water Services on Child Mortality," *Journal of Political Economy*, 113, 83-120.
- Galor, O., and D. Tsiddon. 1996. "Income Distribution and Growth: The Kuznets Hypothesis Revisited." *Economica* 63:S103–17.
- Galuh Prila Dewi (2013) P3DI Bidang Ekonomi & Kebijakan Publik. Sektor Keuangan Terhadap Pengurangan Kemiskinan di Indonesia.
- Gardeva, A., & Rhyne, E. (2011). *Survey report on opportunities and obstacles to financial inclusion*. Center for Financial Inclusion, ACCION International.
- Gilbert, Alan and Josef Gugler, 1996. *Urbansiasi dan Kemiskinan di Dunia Ketiga*. Yogyakarta: Tiara Wacana.
- Ginevicius, R.; Podvezko, V. 2006. Comprehensive evaluation of economic and social development of Lithuanian regions based on a structured set of criteria, The 4th International Conference Citizens and Governance for Sustainable Development, pp. 194–199.
- Goldsmith, R.W. (1969). *Financial Structure and Development*. London: Yale University Press
- Cuierati Damodar, 2012. *Dasar-Dasar Ekonometrika, Teori dan Aplikasinya*, Penerbit Erlangga, Bandung



- Ghali, K.H., 1998. "Public Investment and Private Capital Formation in a Vector Error Correction Model of Growth, *Applied Economics*, 30, 837-844.
- Ghani, E., and M. Din, 2006. "The Impact of Public Investment on Economic Growth in Pakistan," *The Pakistan Development Review*, Spring (2006), 87-98.
- Hailu, D. B. and Debele, F. (2015). The Effect of Monetary Policy on the Private Sector Investment in Ethiopia: ARDL Co-Integration Approach. *Economics*. Vol. 4, No. 2, 2015, pp. 22-33. doi: 10.11648/j.eco.20150402.12.
- Hamrullah, Basri Hasanuddin, Agussalim and Nursini (2015),"Government Role to Hman Capital of Endogenous Growth in Eastern Indonesia" *IOSR Journal* Volume 18, Issue 4 .Ver. V , PP 19-22
- Helms B. 2006. *Access for All. Building Inclusive Financial Systems*. Consultative Group to Assist the Poorest, The World Bank: Washington DC.
- Herrick, Bruce/Charles P Kindleberger. 1988; *Ekonomi Pembangunan*, terjemahan Drs. Komarudin, Penerbit Bina Aksara, Jakarta.
- Hicks, JR. (1937). Mr. Keynes and the Classics: A Suggested Interpretation. *Econometria*, 5(2): 147
- Honohan, P. (2004). Financial development, growth and poverty: How close are the Links? In: C. Goodhart, (Ed.), *Financial development and economic growth: Explaining the links*. London: Palgrave.
- Honahan, P.(2007). Cross-Country Variation in Household Access to Financial Services. World Bank Paper Conference on "Access to Finance," Washington, DC.
- Hossain Mohammad Imran (2013). dalam Tesis, Efektivitas Pengeluaran Publik, Pertumbuhan Ekonomi, dan Kemiskinan di Bangladesh.
- Huang, Y. (2006). Private Investment and Financial Development in a Globalized World. Discussion paper No. 06/589.
- Hubbard, Glenn. *Tax reform is the best way to tackle income inequality*,http://www.washingtonpost.com/opinions/tax-reform-is-the-best-way-to-tackle-incomeinequality/2014/01/10/112710ea-68ca-11e3-a0b9-49bbb34602c_story.html January 11,Akses 22 Januari 2014, 14:51.
- I Made Sanjaya and Nursechafia, (2015) *Inklusif Keuangan dan Pertumbuhan Inklusif: Analisis antar Provinsi di Indonesia*.

Umar P. dan Tiro M.A, 2002. *Metode Penelitian untuk ilmu-ilmu Sosial*, Penerbit Andira, Makassar.

(2004) *The Nexus of Economic Growth, Employment and Poverty Reduction: An Empirical Analysis*. *International Labour Office*.



- Islam, I. & Nazara, S. (2000) Estimating Employment Elasticity for the Indonesian Economy, Technical Note on the Indonesian Labour Market. *International Labour Office*.
- Jalloh, M. (2002). An Analysis of the Macroeconomic Determinants of Private Investment in Sierra Leone. A Thesis Presented to the School of Graduate Studies Addis Ababa University In partial fulfillment of the requirement for the award of the degree of Master of Science in Economics (Economic Policy Analysis).
- Julilian, H., & Kirkpatrick, C. (2001). *Development and poverty reduction in developing countries*. Working Paper No. 30.IDPM, Manchester University.
- J-P. Azam (2003) "Poverty and Growth in the WAEMU After the 1994 Devaluation", mimeo, UNU/WIDER, Helsinki, Finland.
- Jhingan, M.L. 2000. The Economic of Development and Planning (terjemahan D. Guritno). Penerbit CV. Rajawali, Jakarta.
- Kamalesh Shailesh C. Chakrobarty (2011). *financial inclusion*
- Karlan, D., & Zinman, J. (2010). Expanding credit access: Using randomised supply decisions to estimate the impacts. *Review of Financial Studies*, 23(1), 433-464.
- Karlan, D. & Valdivia, M. (2011). Teaching entrepreneurship: Impact of business training on microfinance clients and institutions. *The Review of Economics and Statistics*, 93(2), 510-527.
- Kanbur, R., and N. Lustig. 1999. "Why is Inequality Back on the Agenda?" Paper presented at the Annual World Bank Conference on Development Economics, World Bank, Washington, DC.
- Kaputo, C. C. (2011). Macroeconomic Policy and Domestic Private Investment: The Case of Zambia, 1980-2008. A Dissertation Submitted to the University of Zambia in Partial Fulfillment of the Requirements of the Degree of Master of Arts in Economics, University of Zambia.
- Kaplinsky, R. and M. Morris (2001). A Handbook for Value Market Chain Research. Canada: IDRC
- Kempson E, Atkinson A, Pilley O. (2004). Policy level response to financial exclusion in developed economies: lessons for developing countries. Report of Personal Finance Research Centre, University of Bristol.
- Kendall, J. (2007). *The importance of local finance and human capital in regional growth: The case of India*. University of California Santa Cruz, Job Market Paper.



- Kenworthy, Lane and Leslie McCall, 2008. *Inequality, public opinion and redistribution*, Socio-Economic Review (2008) 6, 35–68.
- King, R.G., & Levine, R. (1993). *Finance and Growth: Schumpeter might be right. The Quarterly Journal of Economics*. 108(3), 717-737.
- Kelkar, V. (2010). Financial Inclusion for Inclusive Growth. *ASCI Journal of Management*, 55-68.
- Kempson, E (2006). *Policy level response to financial exclusion in developing economies: Lessons for Developing Countries. Paper for Access to Finance: Building Inclusive Financial Systems*, May 30-31 2006, Washington DC: World Bank.
- Kuznets, S. (1955). Economic growth and income inequality. *The American economic review*, 1-28.
- Khan, M., 1996. "Government Investment and Economic Growth in the Developing World," *The Pakistan Development Review*, Winter (1996), 416-439.
- Khan, HGA, Khan, AZ, Ahmad, A and Siraj, AE. (2011). Financial Development and Poverty Reduction. *Global Journal of Management and Business Research* Vol. 11 issue 5 Version 1
- Klasen, S. (2010). *Measuring and Monitoring Inclusive Growth: Multiple Definitions, Open Questions, and Some Constructive Proposals. ADB Sustainable Development Working Paper Series*, No.12.
- Kupukile, M., & Ncube, M. (2011). *Competition and efficiency in the banking sector in South Africa. African Development Review*, 23(1), 4–15.
- Kuznets S, 1955. *Economic Growth and Income Inequality*. The American Economic Review, Volume XLV, number one.
- Leyshon, A., & Thrift, N. (1995). *Geographies of Financial Exclusion: Financial Abandonment in Britain and the United States. JSTOR*, New Series, Vol. 20, No. 3 , 312-241.
- Leyshon, T. 1995. Geographies of Financial Exclusion: Financial Abandonment in Britain and the United States. *Transactions of the Institute of British Geographers New Series*. 20: pp. 312–341.
- Lawrence Uchenna Okoye (2017), *Department of Banking and Finance*, Covenant University, Ota, Ogun State, Nigeria.
- Levine, R. & Zervos, S. (1998). *Stock markets, banks, and economic growth. American Economic Review*, 88, 537-558.



- Levine, R. (1997). Financial development and Economic Growth: Views and Agenda. *Journal of Economic Literature* Vol. XXXV (June 1997) pp. 688-726
- Levine, R. and Renelt, D., (1992), —A sensitivity Analysis of Cross-country regressions. *American Economic Review*, 82 (4): 942-963.
- Leeladhar V (2005). Taking Banking Services to the Common Man – Financial Inclusion, Commemorative Lecture at the Fedbank Hormis Memorial Foundation at Ernakulam.
- Lewis, W.A. (1954) Development With Unlimited Supplies of Labour, Manchester School of Economics and Social Studies, Vol.26, no.2
- Louzi, B & Abadi, A 2011, 'The impact of foreign direct investment on economic growth in Jordan', *International Journal of Recent Research and Applied Studies (IJRRAS)*, vol. 8, no.2, pp. 253-8.
- Luebker, Malte. *The Impact of Taxes and Transfers on Inequality*, TRAVAIL Policy Brief No. 4 ILO (05 August 2011).
- Lustig, N., O. Arias, and J. Rigolini. 2002. *Poverty Reduction and Economic Growth: A Two-Way Causality*. Sustainable Development Department Technical Papers Series, Inter-American Development Bank, Washington, DC. Available: www.iadb.org/sds/doc/GrowthIneqDualCaus.pdf.
- Maharajabdinul, (2016). Pengaruh Desentralisasi Fiskal, Upah Minimum dan Akuntabilitas Pemerintah Daerah Terhadap Kemiskinan di Kawasan Timur Timur Indonesia. Dalam Disertasi Program Doktor Ilmu Ekonomi Fakultas Ekonomi dan Bisnis Univeristas Hasanuddin Makassar.
- Mackinnon, RI. (1973). *Money and Capital in Economic Development*. Washington DC: The Brookings institution.
- Molapo, S. and Damane, M. (2015). Determinants of Private Investment in Lesotho, 1982-2013. *European Scientific Journal* Volume 11, No 34, ISSN 1857-7881.
- Moss, T. 2009. Lin Roundtable: *The Value of Stock Markets*. Free Exchange, Economist.com blogs. Available: http://www.economist.com/blogs/freeexchange/lin_roundtable.
- Moser, C. (1998a). The Asset-Vulnerability Framework: Reassessing Urban Poverty Reduction Strategies. *World Development* 26(1):1-19.
- Muhammad Yunus, 2004. The 8th Habit; From Effectiveness to Greatness; 2004:6-7 Kasus Grameen Bank (Bank Pedesaan)



- Munkner, Hans H dan Thomas Walter, 2001. Sektor Informal Sumber Pendapatan Bagi Kaum Miskin, dalam Menggempur Akar-Akar Kemiskinan (Izzedin Bakhit dkk), *Attacking the Roots of Poverty*, Jakarta YakomaPGI.
- Mbaye, E. Z. (2014). Determinants of Domestic Private Investments in Kenya. A Research Project Submitted to the School of Economics, University of Nairobi, in Partial Fulfilment of the Requirementsf The Degree of Master of Arts In Economics.
- McGregor JA. 1988. Credit and the rural poor: the changing policy environment in Bangladesh. *Public Administration and Development* 8: 467–482.
- Naqvi, N., (2002). "Crowding-in or Crowding-out? Modelling the Relationship between Public and Private Fixed Capital Formation Using Co-integration Analysis: The Case of Pakistan 1964-2000," *The Pakistan Development review*, 41(3), 255-276.
- Nurkse, R. *Problems of Capital Formation in Developing Countries*, Oxford: Oxford University Press, 1953.
- Nurzaman, S. S. 2002. Perencanaan Wilayah di Indonesia Pada Masa Sekitar Krisis, ITB, Bandung.
- Parkin, M. *Economics*. 8th Edition. Toronto: Pearson International Edition, 2008.
- Perera, D.L.H. and Lee, G.H.Y. (2013). Have Economic Growth and Institutional Quality contributed to Poverty and Inequality Reduction in Asia? *Journal of Asian economics*, 27(2013) 71-86.
- Perroti, R. 1993. "Political Equilibrium, Income Distribution, and Growth." *Review of Economic Studies* 60(4):755–76.
- Perotti, Roberto. "Growth, Income Distribution, and Democracy." *Journal of Economic Growth* , June 1996, 1(2), pp. 149-87.
- Piketty, T. & Goldhammer, A. (2014). *Modal di abad ke dua puluh satu*. Cambridge Massachusetts: The Belknap Press dari Harvard University Press.
- Todaro M P, 2000. *Economic Development*, Addison Wesley Longman, Inc, New York.
- Ramji, M. (2009). *Financial inclusion in Gulbarga: Finding usage in access*. Centre for Micro Finance Working Paper Series No. 26, New Delhi: India, Institute for Financial Management and Research.
- Devellian, Martin (1997). Can High Inequality Development Countries Escape Absolute Poverty?. *Economic Letters* 56: 51-75. Retrieved February 9, 2005 from <http://web.worldbank.org/wbsite/external/topics/extpovert/extpi>.



- Ravallion, M. and S. Chen(1997). What Can New Survey Data Tell Us about Recent Changes in Distribution and Poverty? *World Bank Economic Review*, 11(2), 357-382.
- Ravallion, M. & Chen, S. (2003) Measuring pro-poor growth.*Economics Letters*, 78, 93-99.
- Ravallion, M. and Chen, S. (2007). China's Uneven Progress against Poverty", *Journal of Development Economics* 82 (1): 1-42.
- Reungsri, T., (2010). "The Impact of Public Infrastructure Investment on Economic Growth in Thailand," Doctor of Philosophy Thesis, Victoria University.
- Rioja F. & Valev N. (2003). Does one size fit all? A Re-examination of the finance and growth relationship. Social Science Research Network.
- Robinson, M.S. (2001). *The Microfinance Revolution: Sustainable Finance for the Poor*.Washington: The World Bank.
- Robinson, J. (1952). The Generalization of the General Theory.In: The rate of Interest and Other Essays. London: MacMillan, 86 – 87
- Robert Baldwin (1988). *Pembangunan Ekonomi dan Pertumbuhan Ekonomi*, Penerbit Bina Aksara, Jakarta.
- Rogerson, C.M., (1999): Local Economic Development And Urban Poverty: The Experience of Post-Apartheid South Africa, *Habitat International*, 23, 511-534.
- Romer, C., D., and Romer, D., H., (1999), "Monetary Policy and the Well-Being of the Poor", *Economic Review*, (Q I):21–49.
- Ronald K. S. Wakyereza, (2017). The Impact of Foreign Direct Investment (FDI) on Economic Growth, Employment and Poverty Reduction in Uganda. College of Business, Finance and Financial Services Discipline Victoria University, Melbourne Australia.
- Rosenberg, R., (2010).Does Microcredit Really Help Poor People? *CGAP Focus Note no. 59*.Washington, DC: CGAP.
- Sackey, H. A. (2007). Private Investment for Structural Transformation and Growth in Africa: Where do Small and Medium-Sized Enterprises Stand? African Economic Conference 2007'Opportunities and Challenges of Development for Africa in the Global Arena 15-17 November 2007, Addis Ababa, Ethiopia.
- E. and De Janvry, A. (2000). Growth, Poverty and Inequality in Latin America: A Casual Analysis, 1970-94, *Review of Income and Wealth*, series 46, No. 3, September 2000.



- Sarma, M., and J. Pais. (2008). *Financial Inclusion and Development: A Cross Country Analysis. Paper*. Presented at the Conference on Equality, Inclusion and Human Development organized by HDCA and IHD, New Delhi.
- Sarma, M. (2008). Index of Financial Inclusion. *Indian Council for Research on International Economic Relations Working Paper No. 215*.
- Sarma, M. (2010) Index of Financial Inclusion. *CITD Discussion Paper 10-05*.
- Sarma, M. and Pais, J. (2011) Financial Inclusion and Development. *Journal of International Development*, 23: 613-628.
- Sarma, M. (2012). Index of Financial Inclusion - A Measure of Financial sector inclusiveness. Money, Trade, Finance, and Development Competence Center in cooperation with DAAD Partnership and Hochschule für Technik und Wirtschaft Berlin University of Applied Sciences. Working Paper No.07/2012. Berlin.
- Samarajiva, R. (2011). *Mobile at the bottom of the pyramid: informing policy from the demand side. Information Technology and International Development*, 7(3), iii–vii.
- Seyfried, W. (2005) Examining The Relationship between Employment and Economic Growth in The Ten Largest States. *Southwestern Economic Review*.
- Sinclair S. P. (2001). Financial exclusion: An Introductory Survey. Report of Centre for Research in Socially Inclusive Services. Heriot-Watt University, Edinburgh.
- Singh, S. (2013). *Globalization & money: A global south perspective*. USA: Rowman & Littlefield.
- Son, H. and N. Kakwani (2003). Poverty Reduction: Do Initials Conditions Matter?. Mimeo, The World Bank. Retrieved Marc 11, 2005 from internet.
- Sumarto Herta Agus (2010). *Jurus Mabuk Membangun Ekonomi Rakyat*. Penerbit: PT. Indeks, Jakarta.
- Shafi, M., & Medabesh, A. H. (2012). Financial inclusion in developing countries: Evidences from an Indian State. *International Business Research*, 5(8), 116-122.
- Schumpeter, J.A. (1911). *The Theory of Economic Development: An Inquiry into Profits, Capital, Credit, Interest and the Business Cycle*. Translated and Reprinted 1961, New York: Oxford University Press.



- Senhadji and Khan, MS,. (2000). Financial Development and Economic Growth: AN Overview. International Monetary Fund. IMF Working Paper
- Sri Liana Susesno, Tarsidin (2008). Kemiskinan di Indonesia: Pengaruh Pertumbuhan dan Perubahan Struktur Ekonomi. Buletin Ekonomi Moneter dan Perbankan.
- Stevens, K.L and Sessions, D.N. (2008). The Relationship between Poverty, Economic growth, and Inequality Revisited, *Journal of Income Distribution*, march 2008, v.17, iss.1, pp. 5-20.
- Stiglitz, Joseph E., 2012. *The Price of Inequality*, W.W. Norton.
- Straub, S., 2008. "Infrastructure and Growth in Developing Countries: Recent Advances and Research Challenges," Policy Research Working Paper 4460, The World Bank, Washington, D.C.
- Todaro M P, 1999. Pembangunan Ekonomi di Dunia Ketiga (Terjemahan Munandar Haris), Penerbit Erlangga.
- Todaro, Michael P. dan Stephen C. Smith, 2006. *Pembangunan Ekonomi*, Jakarta: PT Erlangga.
- Todaro M P, 2000. *Economic Development*, Addison Wesley Longman, Inc, New York.
- Oroo Julie. (2013), The Relationship Between Financial Inclusion and GDP Growth in Kenya Department of Finance and Accounting School of Business, University of Nairobi.
- Thornton, J. (2001). The Kuznets inverted-U hypothesis: panel data evidence from 96 cries. *Applied Economics Letters*, 8(1), 15-16.
- United Nations (UN). (2015). *Economic and Social Survey of Asia and The Pacific 2015: Making Growth More Inclusive for Sustainable Development*. Bangkok: United Nations Publication.
- United Nations Development Program Human Development Report 2003. Millennium Development Goals: A Compact among Nations to End Human Poverty. Oxford University Press New York.
- UN (2014b). UN World Investment Report 2014: Investing in the SDGs: An Action Plan.
- UN (2014a). The Economic Development in Africa Report 2014: Catalyzing Investment for Transformative Growth in Africa.



- Ouattara, B. (2004). Modelling the Long Run Determinants of Private Investment in Senegal. CREDIT Research Paper No. 04/05.
- Walterskirchen, E. (1999) The Relationship Between Growth, Employment and Unemployment in the UE. *European Economist for an Alternative Economic Policy Workshop*.
- Walter Musakwa, (2008). Economic Development As a Poverty Allviation Tool a Case Study on The Urban Renewal Pprogram in Kwamashu Durban. December 2008 A dissertation submitted in fulfillment of the Master of Science in Urban and Regional Planning; School of Architecture, Town Planning and Housing, University of Kwa-Zulu Natal
- World Bank (1990). World Development Report 1990 .Poverty .Oxford University Press New York
- World Bank (1999) World Development Report 1999 Knowledge for Development Oxford University Press New York
- World Bank (2004). —Determinants of Private Sector Growth in Ethiopia’s Urban
- World Bank. Era Baru Pengentasan Kemiskinan di Indonesia. Jakarta: World Bank, 2006.
- World Trade Organisation (2012). *WTO General Agreement on Trade in Services*, WTO, 2012. Online Available at: www.wto.org/english/tratop_e/serv_e/0-gats_e.htm.
- World Bank (2000a). World Development Report: Attacking Poverty. New York: Oxford University Press.
- World Bank (2011), “Financial Inclusion” Global Financial Development Report.
- White, S. (2005). Enhancing private investment for development: Policy guidance for development agencies.
- Zhuang, J. and I. Ali. (2011). *Poverty, Inequality, and Inclusive Growth in Asia*. London: Anthem Press and ADB.
- Zhuang, J., D. Edwards, D. Webb, and M. V. Capulong. (2000). Corporate Governance and Finance in East Asia: A Study of Indonesia, Republic of Korea, Malaysia, Philippines, and Thailand: Volume One (A Consolidated Report).
- Yusuf, Arief Anshory., Andy Sumner dan Irlan Adiyatma Rum, *The Long-run Evolution of Inequality In Indonesia, 1990-2012: New Estimates and Four Hypotheses On Drivers*, Working Paper in Economics and Development Studies, No. 201314, September 2013, Center for Economics and Development Studies, Department of Economics, Padjadjaran University.



Yoghi Citra Pratama (2014). Analisis Faktor-Faktor yang Mempengaruhi Kemiskinan di Indonesia, Jurnal Bisnis dan Manajemen. UIN Syarif Hidayatullah Jakarta.



Lampiran 1

TABULASI DATA PENELITIAN

PROVINSI	TAHUN	X1 (%)	X2 (Rp)	Y1 (%)	Y2 (ribu)	Y3 (%)	Y4 (%)
Nusa Tenggara Barat	2008	0.105	14.4**	2.82	94.8	0.33	19.73
Nusa Tenggara Barat	2009	0.104	2.9*	12.14	93.88	0.35	18.4
Nusa Tenggara Barat	2010	0.111	1805.8	6.35	94.22	0.4	16.78
Nusa Tenggara Barat	2011	0.138	42.3	3.15	94.54	0.37	16.9
Nusa Tenggara Barat	2012	0.311	45.4	1.12	94.77	0.35	15.41
Nusa Tenggara Barat	2013	0.484	1398	5.16	94.72	0.35	16.22
Nusa Tenggara Barat	2014	0.19	212.5	5.17	94.7	0.39	15.52
Nusa Tenggara Barat	2015	0.174	347.8	21.76	95.02	0.36	15.18
Nusa Tenggara Barat	2016	0.177	1342.8	5.82	96.34	0.37	14.82
Nusa Tenggara Barat	2017	0.84	5413.5	0.11	96.14	0.37	14.06
Nusa Tenggara Timur	2008	0.15	19.4	4.84	96.3	0.34	27.88
Nusa Tenggara Timur	2009	0.163	17*	4.29	97.22	0.36	25.35
Nusa Tenggara Timur	2010	0.17	14.1	5.25	96.51	0.38	25.1
Nusa Tenggara Timur	2011	0.197	56	5.63	97.24	0.33	23.36
Nusa Tenggara Timur	2012	0.37	14.4	5.45	97.47	0.36	22.41
Nusa Tenggara Timur	2013	0.543	17.6	5.41	97.88	0.34	22.69
Nusa Tenggara Timur	2014	0.6201	3.6	5.05	98.03	0.36	21.78
Nusa Tenggara Timur	2015	0.6502	1295.7	4.92	96.88	0.35	25.89
Nusa Tenggara Timur	2016	0.7101	822.2	5.17	96.41	0.36	25.69
Nusa Tenggara Timur	2017	0.58	1081.9	5.16	96.79	0.36	24.59
Sulawesi Utara	2008	0.229	42.2	10.86	87.65	0.28	12.04
Sulawesi Utara	2009	0.242	49.5	7.85	89.37	0.31	11.05
Sulawesi Utara	2010	0.245	95.8	7.16	89.52	0.37	10.14
Sulawesi Utara	2011	0.255	331.6	7.39	90.26	0.36	9.37
Sulawesi Utara	2012	0.428	678.5	7.86	91.45	0.43	8.69
Sulawesi Utara	2013	0.601	66.8	6.38	92.5	0.45	10.46
Sulawesi Utara	2014	0.3501	83	6.31	92.73	0.44	10.47
Sulawesi Utara	2015	0.4712	270.6	6.12	91.31	0.37	12.1
Sulawesi Utara	2016	0.5221	5069.60	6.17	92.18	0.37	10.82
Sulawesi Utara	2017	0.51	1488.2	6.32	93.88	0.4	10.59
Sulawesi Tengah	2008	0.136	44.5**	7.78	92.75	0.33	23.22
Sulawesi Tengah	2009	0.148	58.3*	7.71	94.89	0.34	21.35
Sulawesi Tengah	2010	0.15	153.6	8.74	95.11	0.37	20.26
Sulawesi Tengah	2011	0.164	2620.2	9.15	95.69	0.39	17.89
Sulawesi Tengah	2012	0.337	602.3	9.27	96.25	0.39	16.85
Sulawesi Tengah	2013	0.51	605.3	9.59	97.33	0.39	15.89
Sulawesi Tengah	2014	0.531	95.8	5.07	97.08	0.35	14.66
Sulawesi Tengah	2015	0.6122	968.4	15.5	97.01	0.37	15.07
Sulawesi Tengah	2016	0.6513	1081.2	9.98	96.54	0.35	15.48
Sulawesi Tengah	2017	0.36	1929.7	7.14	97.03	0.36	15.59
Sulawesi Selatan	2008	0.191	1105.2	7.78	89.51	0.36	16.79
Sulawesi Selatan	2009	0.197	1137.8	6.23	91.26	0.39	15.81
Sulawesi Selatan	2010	0.206	3212.3	8.19	92.01	0.4	14.88
Sulawesi Selatan	2011	0.226	3986.3	7.61	93.11	0.43	13.57
Sulawesi Selatan	2012	0.399	2318.9	8.39	93.44	0.42	12.93



PROVINSI	TAHUN	X1 (%)	X2 (Rp)	Y1 (%)	Y2 (ribu)	Y3 (%)	Y4 (%)
Sulawesi Selatan	2013	0.572	921	7.62	94.12	0.43	13.31
Sulawesi Selatan	2014	0.154	4949.6	7.54	94.21	0.45	12.25
Sulawesi Selatan	2015	0.141	9215.30	7.19	94.19	0.4	13.22
Sulawesi Selatan	2016	0.141	3334.6	7.42	94.89	0.41	12.3
Sulawesi Selatan	2017	0.145	1969.4	7.23	95.23	0.41	12.65
Sulawesi Tenggara	2008	0.133	20**	7.27	93.95	0.33	23.78
Sulawesi Tenggara	2009	0.144	2.9*	7.57	94.62	0.36	23.11
Sulawesi Tenggara	2010	0.149	19.2	8.22	95.23	0.42	20.92
Sulawesi Tenggara	2011	0.179	59	8.96	95.55	0.39	18.24
Sulawesi Tenggara	2012	0.352	907.3	10.41	96.8	0.4	16.24
Sulawesi Tenggara	2013	0.525	1261.6	7.5	96.57	0.39	16.92
Sulawesi Tenggara	2014	0.6311	1249.9	6.26	97.87	0.4	15.17
Sulawesi Tenggara	2015	0.4451	2015.4	6.88	96.38	0.38	16.12
Sulawesi Tenggara	2016	0.3704	1794.2	6.51	96.22	0.38	15.31
Sulawesi Tenggara	2017	0.109	3148.7	6.81	96.86	0.39	14.74
Gorontalo	2008	0.184	20.8**	7.76	92.96	0.34	31.72
Gorontalo	2009	0.201	13*	7.54	94.94	0.35	32.82
Gorontalo	2010	0.221	16.7	7.63	94.95	0.43	30.89
Gorontalo	2011	0.265	11.8	7.68	95.05	0.4	25.65
Gorontalo	2012	0.438	164.9	7.71	95.08	0.41	23.63
Gorontalo	2013	0.611	84.4	7.67	95.49	0.45	24.22
Gorontalo	2014	0.534	45.1	7.27	97.56	0.45	23.21
Gorontalo	2015	0.367	94.3	6.22	96.94	0.4	24.17
Gorontalo	2016	0.892	2202.5	6.52	96.12	0.41	24.3
Gorontalo	2017	0.124	888.4	6.74	96.35	0.43	24.29
Sulawesi Barat	2008	0.1301	0.7	12.07	94.32	0.31	18.03
Sulawesi Barat	2009	0.1051	0.6	6.03	95.08	0.3	16.65
Sulawesi Barat	2010	0.2311	0.24	11.89	95.9	0.36	15.52
Sulawesi Barat	2011	0.3522	0.28	10.32	97.23	0.37	14.83
Sulawesi Barat	2012	0.4301	12	9.01	97.9	0.34	13.92
Sulawesi Barat	2013	0.3722	16	6.93	97.98	0.32	13.31
Sulawesi Barat	2014	0.3463	690.1	8.86	98.4	0.38	12.67
Sulawesi Barat	2015	0.4372	1103.8	7.31	98.19	0.36	12.7
Sulawesi Barat	2016	0.554	84.1	6.01	97.28	0.37	12.0
Sulawesi Barat	2017	0.29	660.2	6.67	97.02	0.35	11.7
Maluku	2008	0.255	0.2***	4.23	88.95	0.31	35.56
Maluku	2009	0.273	0.29**	5.44	89.62	0.31	34.3
Maluku	2010	0.285	1*	6.47	90.87	0.33	33.94
Maluku	2011	0.345	0.1	6.06	91.82	0.36	30.54
Maluku	2012	0.518	3.4	7.81	92.41	0.38	28.12
Maluku	2013	0.691	2.3	5.34	93.03	0.35	26.3
Maluku	2014	0.1351	3.3	6.64	93.41	0.33	25.49
Maluku	2015	0.274	4.8	5.48	93.28	0.34	26.7
Maluku	2016	0.04	11.4	5.73	93.02	0.34	26.88
Maluku	2017	0.33	52.3	5.81	92.23	0.34	26.6
Maluku Utara	2008	0.201	5.9***	5.99	92.97	0.33	14.67
Maluku Utara	2009	0.561	10**	6.07	93.39	0.33	13.42
Maluku Utara	2010	0.207	13.6*	7.95	93.97	0.34	12.28
Maluku Utara	2011	0.239	13.5	6.49	94.2	0.34	11.58



PROVINSI	TAHUN	X1 (%)	X2 (Rp)	Y1 (%)	Y2 (ribu)	Y3 (%)	Y4 (%)
Maluku Utara	2012	0.412	320.5	6.67	94.5	0.31	9.98
Maluku Utara	2013	0.585	1114.9	6.36	94.5	0.32	9.20
Maluku Utara	2014	0.049	156.3	5.49	94.35	0.32	8.85
Maluku Utara	2015	0.155	48.2	6.1	94.44	0.29	7.57
Maluku Utara	2016	0.048	8.80	5.77	96.57	0.31	7.43
Maluku Utara	2017	0.247	1150.6	7.67	95.18	0.32	7.55
Papua	2008	0.223	294.7	1.4	90.7	0.4	45.96
Papua	2009	0.235	41	22.22	92.27	0.38	46.81
Papua	2010	0.246	178	3.19	92.23	0.41	46.02
Papua	2011	0.312	1378.9	5.32	93.18	0.38	41.58
Papua	2012	0.485	54.7	3.08	93.43	0.45	39.39
Papua	2013	0.658	584.3	8.55	95.64	0.44	40.72
Papua	2014	0.077	249.9	3.65	96.3	0.46	35.87
Papua	2015	0.048	1275.2	7.35	95.39	0.39	37.34
Papua	2016	0.057	220.5	9.14	94.27	0.39	37.07
Papua	2017	0.58	1217.9	4.64	92.48	0.4	36.56
Papua Barat	2008	0.283	2**	7.84	95.15	0.31	43.74
Papua Barat	2009	0.286	17.2*	13.87	95.87	0.35	44.71
Papua Barat	2010	0.268	51.3	28.47	95.92	0.38	43.48
Papua Barat	2011	0.296	47.2	27.08	96.16	0.37	39.56
Papua Barat	2012	0.469	45.8	5.84	96.97	0.41	36.33
Papua Barat	2013	0.642	304	7.36	97.09	0.42	36.89
Papua Barat	2014	0.167	100	5.38	96.52	0.41	35.01
Papua Barat	2015	0.001	63.4	4.15	96.28	0.43	37.94
Papua Barat	2016	0.084	10.6	4.52	97.03	0.4	37.33
Papua Barat	2017	0.22	59.2	4.01	96.04	0.39	35.12

Keterangan Tabel:

* data tahun 2007

** data tahun 2006

*** data tahun 2005



Lampiran 2

STATISTIK DESKRIPTIF

	X1	X2	Y1	Y2	Y3	Y4
<i>Mean</i>	0.365	4,585	7.393	94.740	0.372	21.739
<i>Maximum</i>	2.47	9,129	28.47	98.40	0.46	46.81
<i>Minimum</i>	0.001	-2,207	0.11	87.65	0.28	7.43
<i>Std. Dev.</i>	0.309	2,598	3.992	2.270	0.040	10.362
<i>Observations</i>	120	120	120	120	120	120



Lampiran 3

PENGUJIAN VARIABEL X1, X2 TERHADAP Y1,Y2,Y3,Y4**UJI MULTIKOLINEARITAS****PERSAMAAN Y1**

	X1	X2	Y1
X1	1.000000	0.167718	-0.053971
X2	0.167718	1.000000	-0.079660
Y1	-0.053971	-0.079660	1.000000

PERSAMAAN Y2

	X1	X2	Y1	Y2
X1	1.000000	0.167718	-0.053971	0.188982
X2	0.167718	1.000000	-0.079660	0.011436
Y1	-0.053971	-0.079660	1.000000	0.048620
Y2	0.188982	0.011436	0.048620	1.000000

PERSAMAAN Y3

	X1	X2	Y1	Y2	Y3
X1	1.000000	0.167718	-0.053971	0.188982	0.113668
X2	0.167718	1.000000	-0.079660	0.011436	0.268715
Y1	-0.053971	-0.079660	1.000000	0.048620	-0.019284
Y2	0.188982	0.011436	0.048620	1.000000	0.168467
Y3	0.113668	0.268715	-0.019284	0.168467	1.000000

PERSAMAAN Y4

	X1	X2	Y1	Y2	Y3	Y4
X1	1.000000	0.167718	-0.053971	0.188982	0.113668	-0.172828
X2	0.167718	1.000000	-0.079660	0.011436	0.268715	-0.284981
Y1	-0.053971	-0.079660	1.000000	0.048620	-0.019284	0.117129
Y2	0.188982	0.011436	0.048620	1.000000	0.168467	-0.025600
Y3	0.113668	0.268715	-0.019284	0.168467	1.000000	0.181586
Y4	-0.172828	-0.284981	0.117129	-0.025600	0.181586	1.000000



UJI HETEROSKEDASTISITAS

PERSAMAAN Y1

Dependent Variable: RESABS_Y1

Method: Panel EGLS

Date: 01/21/19 Time: 22:53

Sample: 2008 2017

Periods included: 10

Cross-sections included: 12

Total panel (balanced) observations: 120

Linear estimation after one-step weighting matrix

Variable	Coefficient	Std. Error	t-Statistic	Prob.
C	0.081118	0.010391	7.806773	0.0000
X1	-0.001044	0.020476	-0.050970	0.9594
X2	-3.40E-06	3.61E-06	-0.940803	0.3487

PERSAMAAN Y2

Dependent Variable: RESABS_Y2

Method: Panel EGLS

Date: 01/21/19 Time: 22:56

Sample: 2008 2017

Periods included: 10

Cross-sections included: 12

Total panel (balanced) observations: 120

Linear estimation after one-step weighting matrix

Variable	Coefficient	Std. Error	t-Statistic	Prob.
C	0.054150	0.002935	18.45044	0.0000
X1	0.002574	0.002619	0.983039	0.3278
X2	-3.21E-07	1.01E-06	-0.317733	0.7513
Y1	4.77E-05	0.000364	0.130945	0.8961



PERSAMAAN Y3**Dependent Variable: RESABS_Y3**

Method: Panel EGLS

Date: 01/21/19 Time: 22:57

Sample: 2008 2017

Periods included: 10

Cross-sections included: 12

Total panel (balanced) observations: 120

Linear estimation after one-step weighting matrix

Variable	Coefficient	Std. Error	t-Statistic	Prob.
C	0.068673	0.040428	1.698642	0.0924
X1	0.001239	0.002136	0.579951	0.5632
X2	4.25E-08	4.70E-07	0.090501	0.9281
Y1	0.000111	0.000183	0.605071	0.5464
Y2	-0.000282	0.000431	-0.653841	0.5147

PERSAMAAN Y4**Dependent Variable: RESABS_Y4**

Method: Panel EGLS

Date: 01/21/19 Time: 22:58

Sample: 2008 2017

Periods included: 10

Cross-sections included: 12

Total panel (balanced) observations: 120

Linear estimation after one-step weighting matrix

Variable	Coefficient	Std. Error	t-Statistic	Prob.
C	-0.009538	0.079538	-0.119915	0.9048
X1	-0.000108	0.003322	-0.032484	0.9741
X2	-2.56E-09	1.01E-06	-0.002521	0.9980
Y1	3.73E-05	0.000478	0.078218	0.9378
Y2	0.000632	0.000912	0.692658	0.4901
Y3	-0.044129	0.052127	-0.846578	0.3992



UJI AUTOKORELASI

PERSAMAAN Y1

Weighted Statistics

R-squared	0.007561	Mean dependent var	0.245048
Adjusted R-squared	-0.009403	S.D. dependent var	0.249368
S.E. of regression	0.235756	Sum squared resid	6.502962
F-statistic	0.445708	Durbin-Watson stat	1.789581
Prob(F-statistic)	0.641454		

PERSAMAAN Y2

Weighted Statistics

R-squared	0.288389	Mean dependent var	0.088640
Adjusted R-squared	0.193507	S.D. dependent var	0.101516
S.E. of regression	0.094415	Sum squared resid	0.935998
F-statistic	3.039459	Durbin-Watson stat	2.135526
Prob(F-statistic)	0.000581		

PERSAMAAN Y3

Weighted Statistics

R-squared	0.332400	Mean dependent var	0.054424
Adjusted R-squared	0.236111	S.D. dependent var	0.069553
S.E. of regression	0.069108	Sum squared resid	0.496692
F-statistic	3.452122	Durbin-Watson stat	1.955565
Prob(F-statistic)	0.000091		

PERSAMAAN Y4

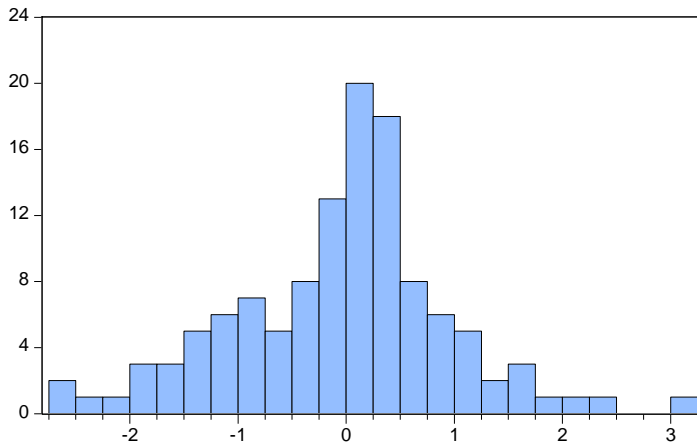
Weighted Statistics

R-squared	0.349500	Mean dependent var	0.026550
Adjusted R-squared	0.248451	S.D. dependent var	0.055007
S.E. of regression	0.052253	Sum squared resid	0.281231
F-statistic	3.458730	Durbin-Watson stat	1.921945
Prob(F-statistic)	0.000064		



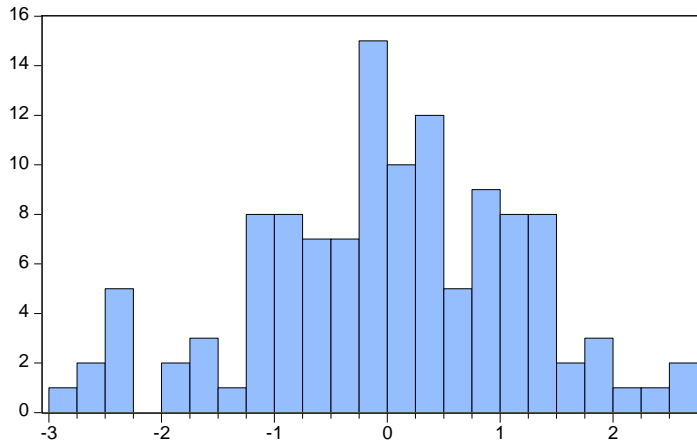
UJI NORMALITAS

PERSAMAAN Y1



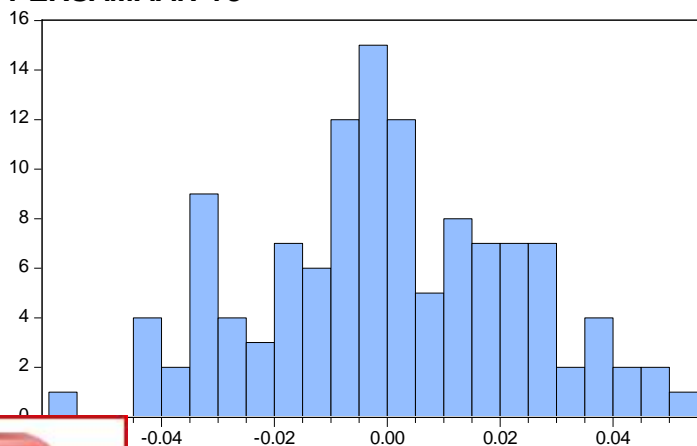
Series: Standardized Residuals	
Sample 2008 2017	
Observations 120	
Mean	-0.043587
Median	0.114237
Maximum	3.000721
Minimum	-2.714935
Std. Dev.	0.997755
Skewness	-0.163212
Kurtosis	3.683585
Jarque-Bera	2.869203
Probability	0.238210

PERSAMAAN Y2



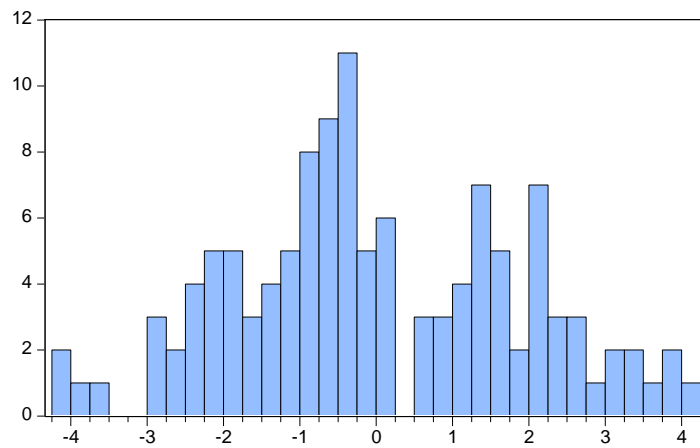
Series: Standardized Residuals	
Sample 2008 2017	
Observations 120	
Mean	3.89e-17
Median	0.018517
Maximum	2.739204
Minimum	-2.934810
Std. Dev.	1.165844
Skewness	-0.231586
Kurtosis	2.887661
Jarque-Bera	1.135741
Probability	0.566731

PERSAMAAN Y3



Series: Standardized Residuals	
Sample 2008 2017	
Observations 120	
Mean	-1.37e-19
Median	-0.001442
Maximum	0.054918
Minimum	-0.055746
Std. Dev.	0.022795
Skewness	0.031410
Kurtosis	2.542386
Jarque-Bera	1.066783
Probability	0.586612



PERSAMAAN Y4

Series: Standardized Residuals
Sample 2008 2017
Observations 120

Mean 2.92e-16
Median -0.266954
Maximum 4.122750
Minimum -4.131933
Std. Dev. 1.877748
Skewness 0.109680
Kurtosis 2.386635

Jarque-Bera 2.121679
Probability 0.346165



Lampiran 4

1) PENGARUH X1, X2 TERHADAP Y1

Dependent Variable: Y1

Method: Panel EGLS

Date: 01/21/19 Time: 20:08

Sample: 2008 2017

Periods included: 10

Cross-sections included: 12

Total panel (balanced) observations: 120

Linear estimation after one-step weighting matrix

Variable	Coefficient	Std. Error	t-Statistic	Prob.
C	0.040768	0.031197	1.306808	0.1938
X1	0.177048	0.046750	3.787120	0.0002
X2	0.021385	0.006757	3.164879	0.0020

Weighted Statistics

R-squared	0.469123	Mean dependent var	0.875676
Adjusted R-squared	0.460049	S.D. dependent var	1.323961
S.E. of regression	0.898007	Sum squared resid	94.35074
F-statistic	51.69511		
Prob(F-statistic)	0.000000		



2) PENGUJIAN HIPOTESIS PENGARUH X1, X2, Y1 TERHADAP Y2

Dependent Variable: Y2

Method: Panel EGLS

Date: 01/21/19 Time: 20:02

Sample: 2008 2017

Periods included: 10

Cross-sections included: 12

Total panel (balanced) observations: 120

Linear estimation after one-step weighting matrix

Variable	Coefficient	Std. Error	t-Statistic	Prob.
C	0.010680	2.690005	397.2767	0.0000
X1	3.800008	2.190008	1.732430	0.0431
X2	3.000005	4.180006	7.179730	0.0000
Y1	2.440006	1.100006	2.208982	0.0147

Effects Specification

Cross-section fixed (dummy variables)

Weighted Statistics

R-squared	0.744350	Mean dependent var	0.013575
Adjusted R-squared	0.710264	S.D. dependent var	0.006523
S.E. of regression	0.000140	Sum squared resid	2.040006
F-statistic	21.83700		
Prob(F-statistic)	0.000000		

EFFECT CROSS SECTION

NO	CROSSID	EFFECT
1	NTB	-3.720007
2	NTT	-0.000271
3	SULUT	0.000449
4	SU:LTENG	-0.000102
5	SULSEL	0.000270
6	SULTRA	-0.000116
7	GORONTALO	-0.000100
8	SULBAR	-0.000304
9	MALUKU	0.000212
10	MALUT	1.780005
11	PAPUA	0.000163
12	PAPUA BARAT	-0.000218



3) PENGUJIAN HIPOTESIS PENGARUH X1, X2, Y1, Y2 TERHADAP Y3

Dependent Variable: Y3

Method: Panel EGLS

Date: 01/21/19 Time: 20:21

Sample: 2008 2017

Periods included: 10

Cross-sections included: 12

Total panel (balanced) observations: 120

Linear estimation after one-step weighting matrix

Variable	Coefficient	Std. Error	t-Statistic	Prob.
C	13.66302	1.768855	7.724215	0.0000
X1	-0.000115	1.020005	-11.22783	0.0000
X2	-0.006651	0.001683	-3.951416	0.0001
Y1	0.002067	0.001215	1.700898	0.0460
Y2	-2.783123	0.388627	-7.161422	0.0000

Effects Specification

Cross-section fixed (dummy variables)

Weighted Statistics

R-squared	0.698142	Mean dependent var	1.082750
Adjusted R-squared	0.654604	S.D. dependent var	0.266063
S.E. of regression	0.065279	Sum squared resid	0.443184
F-statistic	16.03549		
Prob(F-statistic)	0.000000		

EFFECT CROSS SECTION

NO	CROSSID	EFFECT
1	NTB	0.019002
2	NTT	0.110601
3	SULUT	-0.123743
4	SU:LTENG	0.051382
5	SULSEL	-0.149266
6	SULTRA	-0.000394
7	GORONTALO	-0.070153
8	SULBAR	0.138472
9	MALUKU	0.014832
10	MALUT	0.131602
	PAPUA	-0.136886
	PAPUA BARAT	0.014551



4) PENGUJIAN HIPOTESIS PENGARUH X1, X2, Y1, Y2, Y3 TERHADAP Y4

Dependent Variable: Y4

Method: Panel EGLS

Date: 01/21/19 Time: 22:34

Sample: 2008 2017

Periods included: 10

Cross-sections included: 12

Total panel (balanced) observations: 120

Linear estimation after one-step weighting matrix

Variable	Coefficient	Std. Error	t-Statistic	Prob.
C	-30.60355	2.186778	-13.99482	0.0000
X1	-1.59E-05	2.35E-05	-0.675728	0.2504
X2	-0.007132	0.002460	-2.899272	0.0023
Y1	-0.026247	0.009991	-2.627202	0.0050
Y2	-6.049073	0.489336	-12.36180	0.0000
Y3	0.423038	0.243824	1.735010	0.0429

Effects Specification

Cross-section fixed (dummy variables)

Weighted Statistics

R-squared	0.977467	Mean dependent var	-4.189518
Adjusted R-squared	0.973966	S.D. dependent var	2.069901
S.E. of regression	0.098041	Sum squared resid	0.990042
F-statistic	279.2491		
Prob(F-statistic)	0.000000		

EFFECT CROSS SECTION

NO	CROSSID	EFFECT
1	NTB	0.155479
2	NTT	-0.375074
3	SULUT	0.850573
4	SU:LTENG	0.041589
5	SULSEL	0.436054
6	SULTRA	0.005797
7	GORONTALO	-0.365414
8	SULBAR	0.213573
9	MALUKU	-0.196666
	MALUT	0.709353
	PAPUA	-0.683706
	PAPUA BARAT	-0.791556



Lampiran 5

Reduced Form Y1

$$\begin{aligned} Y1 &= \alpha_0 + \alpha_1 X1 + \alpha_2 X2 + \mu_1 \\ &= \alpha_0 + \alpha_1 + \alpha_2 + \mu_1 \end{aligned} \quad (1)$$

Reduced Form Y2

$$\begin{aligned} Y2 &= \beta_0 + \beta_1 X1 + \beta_2 X2 + \beta_3 Y1 + \mu_2 \\ &= \beta_0 + \beta_2 X1 + \beta_2 X2 + \beta_3 Y1 + \mu_2 \\ &= \beta_0 + \beta_1 X1 + \beta_2 X2 + \beta_3 (\alpha_0 + \alpha_1 + \alpha_2 + \mu_1) + \mu_2 \\ &= \beta_0 + \beta_1 X1 + \beta_2 X2 + \beta_3 (\alpha_0 + \alpha_1 + \alpha_2 + \mu_1) + \mu_2 \end{aligned} \quad (2a)$$

$$Y2 = \gamma_0 + \gamma_1 X1 + \gamma_2 X2 + \mu_{12} \quad (2b)$$

dimana:

$$\gamma_0 = \beta_0 + \alpha_0 \beta_3$$

$$\gamma_1 = \beta_1 + \alpha_1 \beta_3$$

$$\gamma_2 = \beta_2 + \alpha_2 \beta_3$$

$$\mu_{12} = \mu_1 \beta_3 + \mu_2$$

Reduced Form Y3

$$\begin{aligned} Y3 &= \lambda_0 + \lambda_1 X1 + \lambda_2 X2 + \lambda_3 Y1 + \lambda_4 Y2 + \mu_3 \\ &= \lambda_0 + \lambda_1 X1 + \lambda_2 X2 + \lambda_3 (\alpha_0 + \alpha_1 + \alpha_2 + \mu_1) + \lambda_4 (\gamma_0 + \gamma_1 X1 + \gamma_2 X2 + \mu_{12}) + \mu_3 \\ &= \lambda_0 + \lambda_1 X1 + \lambda_2 X2 + \alpha_0 \lambda_3 + \alpha_1 \lambda_3 + \alpha_2 \lambda_3 + \mu_1 \lambda_3 + \gamma_0 \lambda_4 + \\ &\quad \gamma_1 \lambda_4 X1 + \gamma_2 \lambda_4 X2 + \mu_{12} \lambda_4 + \mu_3 \\ &= (\lambda_0 + \alpha_0 \lambda_3 + \gamma_0 \lambda_4) + (\lambda_1 + \alpha_1 \lambda_3 + \gamma_1 \lambda_4) X1 + (\lambda_2 + \alpha_2 \lambda_3 + \gamma_2 \lambda_4) X2 + \\ &\quad (\mu_1 \lambda_3 + \mu_{12} \lambda_4 + \mu_3) \\ &= (\lambda_0 + \alpha_0 \lambda_3 + \lambda_4 (\beta_0 + \alpha_0 \beta_3)) + (\lambda_1 + \alpha_1 \lambda_3 + \lambda_4 (\beta_1 + \alpha_1 \beta_3)) X1 + \\ &\quad (\lambda_2 + \alpha_2 \lambda_3 + \lambda_4 (\beta_2 + \alpha_2 \beta_3)) X2 + (\mu_1 \lambda_3 + \lambda_4 (\mu_1 \beta_3 + \mu_2) + \mu_3) \\ &= (\lambda_0 + \alpha_0 \lambda_3 + \beta_0 \lambda_4 + \alpha_0 \beta_3 \lambda_4) + (\lambda_1 + \alpha_1 \lambda_3 + \beta_1 \lambda_4 + \alpha_1 \beta_3 \lambda_4) X1 + \\ &\quad (\lambda_2 + \alpha_2 \lambda_3 + \beta_2 \lambda_4 + \alpha_2 \beta_3 \lambda_4) X2 + (\mu_1 \lambda_3 + \mu_1 \beta_3 \lambda_4 + \mu_2 \lambda_4 + \mu_3) \end{aligned} \quad (3a)$$

$$Y3 = \pi_0 + \pi_1 X1 + \pi_2 X2 + \mu_{123} \quad (3b)$$

dimana:

$$\pi_0 = \lambda_0 + \alpha_0 \lambda_3 + \beta_0 \lambda_4 + \alpha_0 \beta_3 \lambda_4$$

$$= \lambda_1 + \alpha_1 \lambda_3 + \beta_1 \lambda_4 + \alpha_1 \beta_3 \lambda_4$$

$$= \lambda_2 + \alpha_2 \lambda_3 + \beta_2 \lambda_4 + \alpha_2 \beta_3 \lambda_4$$

$$= \mu_1 \lambda_3 + \mu_1 \beta_3 \lambda_4 + \mu_2 \lambda_4 + \mu_3$$



Reduced Form Y4

$$\begin{aligned}
Y_4 &= \delta_0 + \delta_1 X_1 + \delta_2 X_2 + \delta_3 Y_1 + \delta_4 Y_2 + \delta_5 Y_3 + \psi_4 \\
&= \delta_0 + \delta_1 X_1 + \delta_2 X_2 + \delta_3 (\alpha_0 + \alpha_1 + \alpha_2 + \psi_1) + \delta_4 (\gamma_0 + \gamma_1 X_1 + \\
&\quad \gamma_2 X_2 + \psi_{12}) + \delta_5 (\pi_0 + \pi_1 X_1 + \pi_2 X_2 + \psi_{123}) + \psi_4 \\
&= \delta_0 + \delta_1 X_1 + \delta_2 X_2 + \alpha_0 \delta_3 + \alpha_1 \delta_3 + \alpha_2 \delta_3 + \psi_1 \delta_3 + \gamma_0 \delta_4 + \\
&\quad \gamma_1 X_1 \delta_4 + \gamma_2 X_2 \delta_4 + \psi_{12} \delta_4 + \pi_0 \delta_5 + \pi_1 X_1 \delta_5 + \pi_2 X_2 \delta_5 + \psi_{123} \delta_5 + \psi_4 \\
&= (\delta_0 + \alpha_0 \delta_3 + \gamma_0 \delta_4 + \pi_0 \delta_5) + (\delta_1 + \alpha_1 \delta_3 + \gamma_1 \delta_4 + \pi_1 \delta_5) X_1 + \\
&\quad (\delta_2 + \alpha_2 \delta_3 + \gamma_2 \delta_4 + \pi_2 \delta_5) X_2 + (\psi_1 \delta_3 + \psi_{12} \delta_4 + \psi_{123} \delta_5 + \psi_4 \\
&= (\delta_0 + \alpha_0 \delta_3 + \delta_4 (\beta_0 + \alpha_0 \beta_2) + \delta_5 (\lambda_0 + \alpha_0 \lambda_3 + \beta_0 \lambda_4 + \alpha_0 \beta_3 \lambda_4) + \\
&\quad (\delta_1 + \alpha_1 \delta_3 + \delta_4 (\beta_1 \alpha_1 \beta_3) + \delta_5 (\lambda_1 + \alpha_1 \lambda_3 + \beta_1 \lambda_4 + \alpha_1 \beta_3 \lambda_4)) X_1 + \\
&\quad (\delta_2 + \alpha_2 \delta_3 + \delta_4 (\beta_2 + \alpha_2 \beta_3) + \delta_5 (\lambda_2 + \alpha_2 \lambda_3 + \beta_2 \lambda_4 + \alpha_2 \beta_3 \lambda_4)) X_2 + \\
&\quad (\psi_1 \delta_3 + \delta_4 (\psi_1 \beta_3 + \psi_2) + \delta_5 (\psi_1 \lambda_4 + \psi_1 \beta_3 \lambda_4 + \psi_2 \lambda_4 + \psi_3 + \psi_4 \\
&= (\delta_0 + \alpha_0 \delta_3 + \beta_0 \delta_4 + \alpha_0 \beta_3 \delta_4 + \lambda_0 \delta_5 + \alpha_0 \lambda_3 \delta_5 + \beta_0 \lambda_4 \delta_5 + \\
&\quad \alpha_0 \beta_3 \lambda_4 \delta_5) + (\delta_1 + \alpha_1 \delta_3 + \beta_1 \delta_4 + \alpha_1 \beta_3 \delta_4 + \\
&\quad \lambda_1 \delta_5 + \alpha_1 \lambda_3 \delta_5 + \beta_1 \lambda_4 \delta_5 + \alpha_1 \beta_3 \lambda_4 \delta_5) X_1 + (\delta_2 + \alpha_2 \delta_3 + \beta_2 \delta_4 + \\
&\quad \alpha_2 \beta_3 \delta_4 + \lambda_2 \delta_5 + \alpha_2 \lambda_3 \delta_5 + \beta_2 \lambda_4 \delta_5 + \alpha_2 \beta_3 \lambda_4 \delta_5) X_2 + \\
&\quad (\psi_1 \delta_3 + \psi_1 \beta_3 \delta_4 + \psi_2 \delta_4 + \psi_1 \lambda_4 \delta_5 + \psi_1 \beta_3 \lambda_4 \delta_5 + \psi_2 \lambda_4 + \psi_3 + \psi_4) \tag{4a}
\end{aligned}$$

$$Y_4 = \theta_0 + \theta_1 X_1 + \theta_2 X_2 + \psi_{1234} \tag{4b}$$

dimana :

$$\begin{aligned}
\theta_0 &= \delta_0 + \alpha_0 \delta_3 + \beta_0 \delta_4 + \alpha_0 \beta_3 \delta_4 + \lambda_0 \delta_5 + \alpha_0 \lambda_3 \delta_5 + \beta_0 \lambda_4 \delta_5 + \alpha_0 \beta_3 \lambda_4 \delta_5 \\
\theta_1 &= \delta_1 + \alpha_1 \delta_3 + \beta_1 \delta_4 + \alpha_1 \beta_3 \delta_4 + \lambda_1 \delta_5 + \alpha_1 \lambda_3 \delta_5 + \beta_1 \lambda_4 \delta_5 + \alpha_1 \beta_3 \lambda_4 \delta_5 \\
\theta_2 &= \delta_2 + \alpha_2 \delta_3 + \beta_2 \delta_4 + \alpha_2 \beta_3 \delta_4 + \lambda_2 \delta_5 + \alpha_2 \lambda_3 \delta_5 + \beta_2 \lambda_4 \delta_5 + \alpha_2 \beta_3 \lambda_4 \delta_5 \\
\psi_{1234} &= \psi_1 \delta_3 + \psi_1 \beta_3 \delta_4 + \psi_2 \delta_4 + \psi_1 \lambda_4 \delta_5 + \psi_1 \beta_3 \lambda_4 \delta_5 + \psi_2 \lambda_4 + \psi_3 + \psi_4
\end{aligned}$$

