

DAFTAR PUSTAKA

- aber, N.K.M., and Chemom. *Intell. Lab. Syst.*, 1999, 49(1), 79-89.
- Abdullah Azzam Muhyiddin, Ahmad Fadlan, Novvria Sagita, & Achmad Zakir. (2023). Studi Angin Fohn Menggunakan Wrf-Arw (Angin Kumbang Di Gunung Ciremai). *Jurnal Aplikasi Meteorologi*, 1(2), 27–33. <https://doi.org/10.36754/jam.v1i2.319>
- Abrar. (2023). Dampak gletser terhadap perubahan iklim. *NIHAIYYAT: Journal of Islamic Interdisciplinary Studies*, 2(3), 213–218. <https://ejournal.tmiial-amien.sch.id/index.php/nihaiyyat/index%0ADAMPAK>
- Aminuddin, J., Kecepatan Angin Terhadap Evapotranspirasi Berdasarkan Metode Penman Di Kebun Stroberi Purbalingga, P., Fakultas Sains dan Teknologi, N., Ar-Raniry Banda Aceh, U., Aminuddin Prodi Fisika, J., & Purwokerto, U. (2016). Pengaruh Kecepatan Angin Terhadap Evapotranspirasi Berdasarkan Metode Penman Di Kebun Stroberi Purbalingga. *Elkawnie: Journal of Islamic Science and Technology*, 2(1), 21–28. www.jurnal.ar-raniry.com/index.php/elkawnie
- Ashel, H. (2023). Pandangan Aksiologi terhadap Geoengineering sebagai Usaha Untuk Mengatasi Pemanasan Global. *Jurnal Filsafat Indonesia*, 6(1), 82–89. <https://doi.org/10.23887/jfi.v6i1.42467>
- Allison, I. (2015). The disappearing ice cap of Puncak Jaya, Papua: An update. *Weather*, 70(6), 181-184
- Anderson, E. P., et al. (2011). Consequences of climate change for ecosystems and ecosystem services in the tropical Andes. In *Climate Change and Biodiversity in the Tropical Andes* (pp. 1-18). Inter-American Institute for Global Change Research.
- Badan Meteorologi, Klimatologi, dan Geofisika (BMKG). (2023). *Salju Abadi Puncak Jaya Menuju Kepunahan Akibat Perubahan Iklim*. Jakarta
- Buytaert, W., et al. (2017). Glacier melt content of water use in the tropical Andes. *Environmental Research Letters*, 12(11), 114014.
- Boissière, M., Locatelli, B., Sheil, D., Padmanaba, M., & Sadjudin, E. (2013). Local perceptions of climate variability and change in tropical forests of Papua, Indonesia. *Ecology and Society*, 18(4).
- Dwi, C., Simbolon, L., Ruhiat, Y., & Saefullah, A. (2022). Analisis Arah dan Kecepatan Angin Terhadap Sebaran Curah Hujan Di Wilayah Kabupaten Tangerang. *Jurnal Teori Dan Aplikasi Fisika*, 10(01), 113–120.
- Edar, A. N. (2021). Pengaruh Suhu dan Kelembaban Terhadap Rasio Kelembaban dan Entalpi (Studi Kasus: Gedung UNIFA Makassar). *LOSARI: Jurnal Arsitektur Kota Dan Pemukiman*, 6(2), 102–114. <https://doi.org/10.33096/losari.v6i2.307>

- Favoria Gusa, R. (2013). Pengolahan Citra Digital Untuk Menghitung Luas Daerah Bekas Penambangan Timah. *Jurnal Nasional Teknik Elektro*, 2(2), 27–34. <https://doi.org/10.20449/jnte.v2i2.71>
- Halide, H., Andika, and Wulandari, P. 2022. Successful Managing of the Covid-19 Pandemic: Lessons Learned from Taiwan. *DOI: https://doi.org/10.21203/rs.3.rs-1920105/v*
- Hamidy, A. N., Sudarti, S., & Yushardi, Y. (2021). Analisis Perubahan Suhu Lingkungan Terhadap Kenyamanan Masyarakat Di Desa Sumber Tengah. *Jurnal Pembelajaran Fisika*, 10(2), 70. <https://doi.org/10.19184/jpf.v10i2.24301>
- Hock, R., et al. (2019). High Mountain Areas. In IPCC Special Report on the Ocean and Cryosphere in a Changing Climate. IPCC
- Intergovernmental Panel on Climate Change (IPCC). (2021). *Climate Change 2021: The Physical Science Basis*. Cambridge University Press.
- IPCC. (2021). Climate Change 2021: The Physical Science Basis. Contribution of Working Group I to the Sixth Assessment Report of the Intergovernmental Panel on Climate Change. Cambridge University Press.
- Javadinejad, S., Dara, R., & Jafary, F. (2020). Climate change scenarios and effects on snow-melt runoff. *Civil Engineering Journal (Iran)*, 6(9), 1715–1725. <https://doi.org/10.28991/cej-2020-03091577>
- Jumadi, J., Yupianti, Y., & Sartika, D. (2021). Pengolahan Citra Digital Untuk Identifikasi Objek Menggunakan Metode Hierarchical Agglomerative Clustering. *JST (Jurnal Sains Dan Teknologi)*, 10(2), 148–156. <https://doi.org/10.23887/jstundiksha.v10i2.33636>
- Kementerian Lingkungan Hidup dan Kehutanan. (2019). Laporan Status Lingkungan Hidup Indonesia 2019. Jakarta: KLHK.
- Klein, A. G., & Kincaid, J. L. (2016). Retreat of glaciers in Papua, Indonesia from 2000 to 2015. *Journal of Glaciology*, 62(236), 989–997.
- Klein, A. G., & Kincaid, J. L. (2006). Retreat of glaciers on Puncak Jaya, Irian Jaya, determined from 2000 and 2002 IKONOS satellite images. *Journal of Glaciology*, 52(176), 65–79
- Kincaid, J. L., & Klein, A. G. (2004). Retreat of the Irian Jaya Glaciers from 1936 to 2000. In 61st Eastern Snow Conference (pp. 9-11).
- Kumar, L., Haramoto, S., & Takeuchi, W. (2020). Impact of ENSO on the proportion of dry and wet periods in Papua, Indonesia. *Atmosphere*, 11(9), 938.
- LENGKA, V. (2022). *Partisipasi Masyarakat Dalam Pemilihan Kepala Kampung Di Kabupaten Jayawijaya Provinsi Papua*. Institut Pemerintahan Dalam Negeri.
- Mufti, F., & . A. (2014). Pengaruh Angin Dan Kelembapan Atmosfer Lapisan Atas Terhadap Lapisan Permukaan Di Manado. *Jurnal MIPA*, 3(1), 58. <https://doi.org/10.35799/jm.3.1.2014.3909>

- Muliati. (2016). No 主観的健康感を中心とした在宅高齢者における健康関連指標に関する共分散構造分析Title. *Revista CENIC. Ciencias Biológicas*, 152(3), 28. file:///Users/andreataquez/Downloads/guia-plan-de-mejora-institucional.pdf%0Ahttp://salud.tabasco.gob.mx/content/revista%0Ahttp://www.revistaalad.com/pdfs/Guias_ALAD_11_Nov_2013.pdf%0Ahttp://dx.doi.org/10.15446/revfacmed.v66n3.60060.%0Ahttp://www.cenetec.
- Mulyawan, H., Samsono, M. Z. H., & Setiawardhana. (2011). Identifikasi Dan Tracking Objek Berbasis Image. *Identifikas Dan Tracking Objek Berbasis Image Processing Secara Real Time*, 1–5. http://repo.pens.ac.id/1324/1/Paper_TA_MBAH.pdf
- McGregor, A. (2015). Policy: Integrating climate change and development in small island developing states. *Natural Climate Change*, 5, 402-403.
- Nofiyanti, K., Kunarso, & Rita Tisiana K, A. D. (2017). Kajian Kedalaman Mixed Layer dan Termoklin Kaitannya dengan Monsun di Perairan Selatan Pulau Jawa. *Jurnal Oseanografi*, 6(1), 131–143. <http://ejournal-s1.undip.ac.id/index.php/jose>
- Olusegun, A.M., Dikko, H.G., and Gulumbe, S.U., 2015. Identifying the Limitation of Stepwise Selection for Variable Selection in Regression Analysis. *American Journal of Theoretical and Applied Statistics* 4(5): 414- 419. doi: [10.11648/j.ajtas.20150405.22](https://doi.org/10.11648/j.ajtas.20150405.22).
- Pepin, N., et al. (2015). Elevation-dependent warming in mountain regions of the world. *Nature Climate Change*, 5(5), 424-430.
- Permana, D. S., Thompson, L. G., & Setyadi, G. (2019). Tropical glacier changes in the area of Puncak Jaya, Papua, Indonesia, from 1850 to 2012 based on historical paintings, photographs, and satellite images. *Global and Planetary Change*, 181, 102996.
- Prentice, M. L., & Hope, G. S. (2007). Climate of Papua and its recent changes. *The Ecology of Papua*, pp177-195. Singapore: Periplus Editions.
- Permana, D. S., Thompson, L. G., & Setyawan, D. (2022). Projections of tropical glacier disappearance in Papua, Indonesia. *Environmental Research Letters*, 17(3), 034001.
- Putri, A. R. (2016). Pengolahan Citra Dengan Menggunakan Web Cam Pada Kendaraan Bergerak Di Jalan Raya. *JUPI (Jurnal Ilmiah Penelitian Dan Pembelajaran Informatika)*, 1(01), 1–6. <https://doi.org/10.29100/jipi.v1i01.18>
- Putri, V. W., Saputra, R., Rayendra, R., Bangun, R., Prediksi, A., Kelulusan, S., Dengan, M., Multiple, M., Ushuluddin, F., Psikologi, F., Aplikasi, B., Semester, P., Mahasiswa, K., & Metode, M. (2017). Penerapan Multiple Regression dalam Pendugaan Awal Kelulusan Mahasiswa. *Seminar Nasional Teknologi Informasi, Komunikasi Dan Industri (SNTIKI) 9, 1*, 18–19.
- Puspitasari, N., & Oky Surendra. (2016). Analisis Tren Perubahan Suhu Udara Minimum Dan Maksimum Serta Curah Hujan Sebagai Akibat Perubahan

Iklm Di Provinsi. *Sains*, 16(2), 66–72.

- Rabatel, A., et al. (2013). Current state of glaciers in the tropical Andes: a multi-century perspective on glacier evolution and climate change. *The Cryosphere*, 7(1), 81-102.
- Slamet Maulana. (2017). Pengembangan buku pengayaan pengetahuan kajian fisis es dan salju. *Jurnal Pendidikan Fisika Universitas Negeri Jakarta*, 7–12.
- Thompson, L. G., Mosley-Thompson, E., Davis, M. E., & Brecher, H. H. (2011). Tropical glaciers, recorders and indicators of climate change, are disappearing globally. *Annals of Glaciology*, 52(59), 23-34.
- Triana Vivi. (2008). Pemanasan Global 3. *Jurnal Kesehatan Masyarakat Andalas*, 2(2), 36. 10.24893/jkma.2.2.159-163.2008
- Yogyakarta, K. K. (2009). *Bab Iii Tinjauan Kawasan / Wilayah*. 32–42.
- Zou, Y., Sun, P., Ma, Z., & Lv, Y. (2022). *penginderaan jauh Tutupan Salju di Tiga Wilayah Tutupan Salju Stabil di Cina dan Pola Spatio-Temporal di Masa Depan*. 0–26.
- Zemp, M., Haeberli, W., & Hock, R. (2020). *Glacier monitoring and glacier-climate interactions: State of the art and perspectives*. *Journal of Glaciology*, 66(260), 1-8.

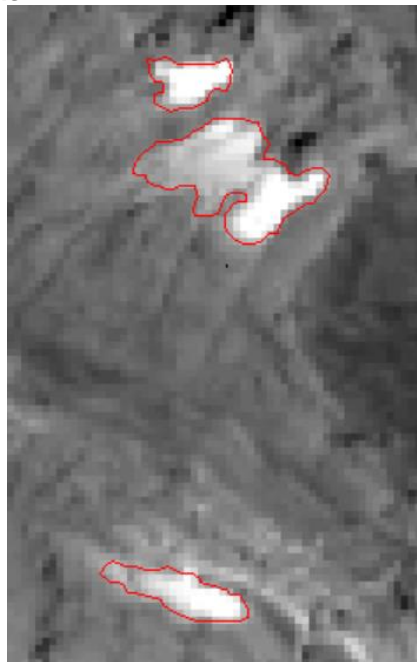
LAMPIRAN

1. citra tutupan salju sebelum digitasi

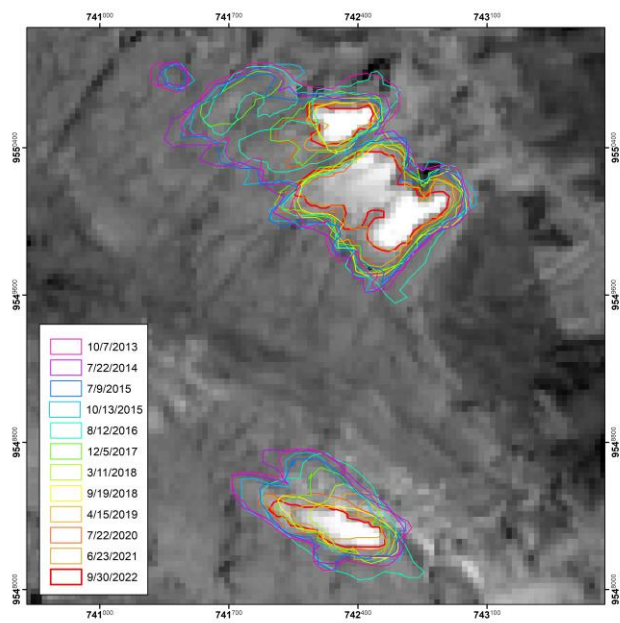


Gambar 8. Salju sebelum digitasi

2. salju setelah digitasi



Gambar 9. Salju setelah digitasi



Gambar 10. Salju setelah digitasi 2013-2022

3. Data perubahan luasan tutupan salju

Tabel 4. perubahan tutupan salju dan variabel cuaca

Luas (Ha)	R.WS(m/s)	SD.WS	R.WD(Derajat)	SD.WD	R.T (Celcius)	SD.T	RT.RH (persen)	SD.RH(persen)
131.341	7.31	0.51	272.27	2.90	29.05	0.06	77.29	0.89
128.601	2.14	1.07	289.81	43.82	27.29	0.33	76.01	2.06
115.103	2.46	0.28	136.28	18.78	28.61	0.10	69.23	0.98
111.351	6.95	0.51	260.30	4.59	28.56	0.16	82.07	0.59
108.8	3.56	0.30	222.01	8.10	28.62	0.30	78.54	2.46
73.746	3.40	0.55	283.56	32.94	28.42	0.15	81.65	2.77
57.219	6.35	0.67	43.93	7.70	28.68	0.30	79.92	2.34
53.998	7.59	0.69	287.92	8.05	28.15	0.36	82.38	1.57
48.927	2.91	0.91	82.43	118.33	27.29	0.20	82.48	1.40
47.423	1.76	0.70	69.62	16.34	28.00	0.18	77.57	1.82
38.071	2.89	0.90	86.72	8.34	28.35	0.30	75.20	1.27
36.471	6.35	0.70	102.34	6.99	28.78	0.24	80.37	2.31