

DAFTAR PUSTAKA

- Abebe, F., Tefera, T., Mugo, S., Beyene, Y., & Vidal, S. (2009). Resistance of Maize Varieties to the *Maize Weevil Sitophilus zeamais* (Motsch.)(Coleoptera: Curculionidae). *African Journal of Biotechnology*, 8(21).
- Adams, J. M., & Schulten, G. G. M. (1978). Losses caused by insects, mites and microorganisms. *Post-Harvest Grain Loss Assessment Methods. American Association of Cereal Chemists, USA*, 83–95.
- Akpodiete, O. N., Lale, N. E. S., Umeozor, O. C., & Zakka, U. (2015). Role of Physical Characteristics of the Seed on the Stability of Resistance of Maize Varieties to *maize weevil (Sitophilus zeamais* Motschulsky). *IOSR Journal of Environmental Science, Toxicology and Food Technology Ver. II*, 9(2), 60–66.
- Antaboga, K., Supeno, B., & Haryanto, H. (2023). Uji Efektivitas Beberapa Tanaman Obat Terhadap Repelensi Serangga Hama Perusak Beras Padi Kultivar Ciliwung Di Gudang Beras. *AGROTEKSOS*, 33(2), 445–455.
- Antika, S. R. V., Astuti, L. P., & Rachmawati, R. (2014). Perkembangan *Sitophilus oryzae* Linnaeus (Coleoptera: Curculionidae) pada Berbagai Jenis Pakan. *Jurnal HPT (Hama Penyakit Tumbuhan)*, 2(4), 77–84.
- Arthur, F. H., Bean, S. R., Smolensky, D., Cox, S., Lin, H. H., Peiris, K. H. S., & Peterson, J. (2020). Development of *Rhyzopertha dominica* (Coleoptera: Bostrychidae) on sorghum: Quality characteristics and varietal susceptibility. *Journal of Stored Products Research*, 87, 101569.
- Arthur, F. H., Ondier, G. O., & Siebenmorgen, T. J. (2012). Impact of *Rhyzopertha dominica* (F.) on quality parameters of milled rice. *Journal of Stored Products Research*, 48, 137–142. <https://doi.org/10.1016/j.jspr.2011.10.010>
- Asmanizar, A. (2021). Kajian Ekstrak Umbi Bawang Putih (*Allium sativum*) Terhadap Hama Bahan Simpan *Sitophilus zeamais* (Coleoptera: Curculionidae) pada Biji Jagung. *AgriLand: Jurnal Ilmu Pertanian*, 9(1), 12–16.
- Astuti, L. P., Setyawan, S., & Widjayanti, T. (2022). *Rhyzopertha dominica* Fabricius (Coleoptera: Bostrichidae): Growth and Development on Six Maize (*Zea mays* L.) Varieties. *AGRIVITA*, 44(2), 248–257. <https://doi.org/http://doi.org/10.17503/agrivita.v44i2.3716>
- Bhanderi, G. R., Radadia, G. G., & Patel, D. R. (2014). Efficacy of various inert materials against *Sitophilus oryzae* in sorghum. *International Journal of Plant* (2), 389–392.
- 10). The infestibility of stored paddy by *Sitophilus oryzae* (Tak.) *rtha dominica* (F.). *Bulletin of Entomological Research*, 51(3),



- CABI. (2022, January). *Sitophilus oryzae* (lesser grain weevil). CABI Compendium. <https://doi.org/10.1079/cabicompendium.10887>
- Chanbang, Y., Arthur, F. H., Wilde, G. E., & Throne, J. E. (2008). Hull characteristics as related to susceptibility of different varieties of rough rice to *Rhyzopertha dominica* (F.)(Coleoptera: Bostrichidae). *Journal of Stored Products Research*, 44(3), 205–212.
- Ciesielska, Z. (1990). Dynamics and expansion of populations of stored product beetles. *Proceedings of the Sixth International Working Conference on Storedproduct Protection*, 498–507.
- Damayanti, R. R., Himawan, T., & Astuti, L. P. (2013). Penghambatan reproduksi *Rhyzopertha dominica* F. (Coleoptera: Bostrichidae) menggunakan fumigan tablet berbasis minyak mimba. *Jurnal HPT (Hama Penyakit Tumbuhan)*, 1(3), 18–26.
- Destiana, I. D. (2017). Ketahanan Jenis Kemasan Benih Kedelai Terhadap Serangan Hama *Callosobruchus Maculatus*. *EDUFORTECH*, 2(2), 67–76.
- Dewi, E. S. (2017). Potensi pengembangan sorgum sebagai pangan alternatif, pakan ternak dan bioenergi di Aceh. *Jurnal Agroteknologi*, 7(2), 29–34.
- Dobie, P. (1974). The laboratory assessment of the inherent susceptibility of maize varieties to post-harvest infestation by *Sitophilus zeamais* Motsch.(Coleoptera, Curculionidae). *Journal of Stored Products Research*, 10(3–4), 183–197.
- Dobie, P. (1977). The Contribution of the Tropical Stored Products Center to the Study of Insect Resistance in Stored Maize. *Stored Products Info*, 34, 7–22.
- Dobie, P., & Kilminster, A. M. (1978). The Susceptibility of Triticale to Post-Harvest Infestation by *Sitophilus zeamais* Motschulsky, *Sitophilus oryzae* (L.) and *Sitophilus granarius* (L.). *Journal of Stored Products Research*, 14(2–3), 87–93.
- E.A. Heinrich, E.G. Medrano, H. R. R. (1985). *Genetic Evaluation for Insect Resistance in Rice*. 356.
- Edde, P. A. (2012). A review of the biology and control of *Rhyzopertha dominica* (F.) the lesser grain borer. *Journal of Stored Products Research*, 48, 1–18.
- Giga, D. P., Kadzere, I., & Canhao, J. (1993). Bionomics of four strains of *Callosobruchus rhodesianus* (Pic)(Coleoptera: Bruchidae) infesting different
Journal of Stored Products Research, 29(1), 19–26.
- I., Kosukcu, C., & Onder, B. S. (2015). The effects of larval diet developmental time, preadult survival, and wing length in *elanogaster*. *TURKISH JOURNAL OF ZOOLOGY*, 39(3), 395–



- Harianja, Y. R., Sitepu, S. F., & Prasetyo, A. E. (2018). Dampak Penggunaan Insektisida Sistemik terhadap Perkembangan Serangga Penyerbuk Kelapa Sawit *Elaeidobius kamerunicus* Faust (Coleoptera: Curculionidae): Impact of Systemic Insecticide Application on populations *Elaeidobius kamerunicus* Faust (Coleoptera: C. *JURNAL ONLINE AGROTEKNOLOGI*, 6(2), 330–338.
- Hassan, S., Ahmad, M., & Aslam, M. (2014). Assessment of Sitotroga cerealella losses in different sorghum varieties under controlled conditions. *Archives of Phytopathology and Plant Protection*, 47(8), 993–999.
- Hendriwal, D. A., & Aryani, D. S. (2019). Susceptibility and Damage Cereals to Infestation *Rhyzopertha dominica* (F.) (Coleoptera: Bostrichidae) in Storage. *Jurnal Agro*, 6, 1.
- Hendriwal, H., & Mayasari, E. (2017). Kerentanan dan kerusakan beras terhadap serangan hama pascapanen *Sitophilus zeamais* L. (Coleoptera: Curculionidae). *Jurnal Agro*, 4(2), 68–79.
- Hendriwal, H., Putra, R. L., & Aryani, D. S. (2019). Susceptibility of Sorghum Cultivars to *Sitophilus oryzae* L. (Coleoptera: Curculionidae) During Storage. *PLANTA TROPICA*, 7(2), 110–116.
- Hendriwal, H., Rahmi, C., Yusnellis, Y., & Wirda, Z. (2022). Comparison Population of *Rhyzopertha dominica* (Coleoptera: Bostrichidae) and Damage Cereals During Storage Period. *PLANTROPICA: Journal of Agricultural Science*, 7(2), 82–91.
- Herlina, L., & Istiaji, B. (2013). *Respon ketahanan beberapa kultivar gandum terhadap hama gudang Sitophilus zeamais (Coleoptera: Dryophthoridae)*. Indonesian Ministry of Agriculture.
- Howe, R. W. (1971). A Parameter For Expressing the Suitability of an Environment for Insect Development. *Journal of Stored Products Research*, 7(1), 63–65.
- Kalshoven, L. G. . (1981). *Pest of Crops in Indonesia*. PT. Ichtar Baru-Van Houve.
- Kavallieratos, N. G., Athanassiou, C. G., Arthur, F. H., & Throne, J. E. (2012). Cracked Hulls Affect Population Development of *Rhyzopertha dominica* in Rough Rice. *J. Insect Sci*, 12, 38.
- Koten, B. B., Soetrisno, R. D., Ngadiyono, N., & Suwignyo, B. (2012). Produksi tanaman sorgum (*Sorghum bicolor* (L.) Moench) kultivar lokal Rote sebagai hijauan pakan ruminansia pada umur panen dan dosis pupuk urea yang *tin Peternakan*, 36(3), 150–155.
- Bangun, I. H., & Nurhajjah, N. (2022). Pengaruh Perlakuan da Buah Ketumbar dan Aspek Biologi *Stegobium paniceum* : Anobiidae). *Zira'ah Majalah Ilmiah Pertanian*, 47(3), 376–383.



- Lopulalan, C. G. C. (2010). Analisa ketahanan beberapa kultivar padi terhadap serangan hama gudang (*Sitophilus zeamais* Motschulsky). *Jurnal Budidaya Pertanian*, 6(1), 11–16.
- Majeed, M. Z., Mehmood, T., Javed, M., Sellami, F., Riaz, M. A., & Afzal, M. (2015). Biology and management of stored products' insect pest *Rhyzopertha dominica* (Fab.)(Coleoptera: Bostrichidae). *International Journal of Biosciences*, 7(5), 78–93.
- Manueke, J., Tulung, M., Pinontoan, O. R., & Paat, F. J. (2012). Tabel Hidup *Sitophilus oryzae* (Coleoptera; Curculionidae) pada Beras. *Eugenia*, 18(1).
- McGaughey, W. H., Speirs, R. D., & Martin, C. R. (1990). Susceptibility of classes of wheat grown in the United States to stored-grain insects. *Journal of Economic Entomology*, 83(3), 1122–1127.
- Micu, L. M., & Petanec, D. I. (2009). Research regarding changes in lipids and fatty acids in the wheat grain after infestation by *Rhyzopertha dominica*. *Research Journal of Agricultural Science*, 41(1), 251–254.
- Naik, R. H., Mohankumar, S., Naik, S. O., Pallavi, M. S., Srinivasan, M. R., & Chandrasekaran, S. (2016). Influence of food sources on developmental period of *Rhyzopertha dominica*, *Tribolium castaneum* and *Sitophilus oryzae*. *Indian Journal of Plant Protection*, 1(44), 63–68.
- Nemati-Kalkhoran, M., Razmjou, J., Borzoui, E., & Naseri, B. (2018). Comparison of life table parameters and digestive physiology of *Rhyzopertha dominica* (Coleoptera: Bostrichidae) fed on various barley cultivars. *Journal of Insect Science*, 18(2), 31.
- Nonci, N., & Muis, A. (2015). Biology, symptoms of attack and management of corn weevil *Sitophilus zeamais* Motschulsky (Coleoptera: Curculionidae). *Jurnal Penelitian Dan Pengembangan Pertanian*, 34(2), 61–70.
- Nuraini, I. V., Prakoso, B., & Suroto, A. (2022). Survei dan identifikasi hama gudang pada komoditas padi, jagung, dan kedelai di Kecamatan Batuwarno, Wonogiri. *Biofarm: Jurnal Ilmiah Pertanian*, 18(2), 87–95.
- Nurhafidah, N. (2021). Uji Viabilitas Beberapa Jenis Kultivar Jagung (*Zea Mays*) Dengan Menggunakan Metode Yang Berbeda. *Agroplantae: Jurnal Ilmiah Terapan Budidaya Dan Pengelolaan Tanaman Pertanian Dan Perkebunan*, 10(1), 30–39.



982). Development of the lesser grain borer, *Rhyzopertha maizae* kernels as affected by site of larval entry. *Entomologia et Applicata*, 31(4), 391–394.

awan, K., Pramono, E., & Sa'diyah, N. (2019). Pengaruh Suhu Lama Penyimpanan Terhadap Vigor Benih Dan Kecambah ar Super-2. *Agrotek Tropika*, 7(3), 443–449.

- Abebe, F., Tefera, T., Mugo, S., Beyene, Y., & Vidal, S. (2009). Resistance of Maize Varieties to the Maize Weevil *Sitophilus zeamais* (Motsch.) (Coleoptera: Curculionidae). *African Journal of Biotechnology*, 8(21).
- Adams, J. M., & Schulten, G. G. M. (1978). Losses caused by insects, mites and microorganisms. *Post-Harvest Grain Loss Assessment Methods. American Association of Cereal Chemists, USA*, 83–95.
- Akpodiete, O. N., Lale, N. E. S., Umeozor, O. C., & Zakka, U. (2015). Role of physical characteristics of the seed on the stability of resistance of maize varieties to maize weevil (*Sitophilus zeamais* Motschulsky). *IOSR Journal of Environmental Science, Toxicology and Food Technology Ver. II*, 9(2), 60–66.
- Antaboga, K., Supeno, B., & Haryanto, H. (2023). Uji Efektivitas Beberapa Tanaman Obat Terhadap Repelensi Serangga Hama Perusak Beras Padi Kultivar Ciliwung Di Gudang Beras. *AGROTEKSOS*, 33(2), 445–455.
- Antika, S. R. V., Astuti, L. P., & Rachmawati, R. (2014). Perkembangan *Sitophilus oryzae* Linnaeus (Coleoptera: Curculionidae) pada Berbagai Jenis Pakan. *Jurnal HPT (Hama Penyakit Tumbuhan)*, 2(4), 77–84.
- Arthur, F. H., Bean, S. R., Smolensky, D., Cox, S., Lin, H. H., Peiris, K. H. S., & Peterson, J. (2020). Development of *Rhyzopertha dominica* (Coleoptera: Bostrychidae) on sorghum: Quality characteristics and varietal susceptibility. *Journal of Stored Products Research*, 87, 101569.
- Arthur, F. H., Ondier, G. O., & Siebenmorgen, T. J. (2012). Impact of *Rhyzopertha dominica* (F.) on quality parameters of milled rice. *Journal of Stored Products Research*, 48, 137–142. <https://doi.org/10.1016/j.jspr.2011.10.010>
- Asmanizar, A. (2021). Kajian Ekstrak Umbi Bawang Putih (*Allium sativum*) Terhadap Hama Bahan Simpan *Sitophilus zeamais* (Coleoptera: Curculionidae) pada Biji Jagung. *Agriland: Jurnal Ilmu Pertanian*, 9(1), 12–16.
- Astuti, L. P., Setyawan, S., & Widjayanti, T. (2022). *Rhyzopertha dominica* Fabricius (Coleoptera: Bostrichidae): Growth and Development on Six Maize (*Zea mays* L.) Varieties. *AGRIVITA*, 44(2), 248–257. <https://doi.org/http://doi.org/10.17503/agrivita.v44i2.3716>
- Bhanderi, G. R., Radadia, G. G., & Patel, D. R. (2014). Efficacy of various inert materials against *Sitophilus oryzae* in sorghum. *International Journal of Plant Protection*, 7(2), 389–392.



0). The infestibility of stored paddy by *Sitophilus oryzae* (Tak.) *ertha dominica* (F.). *Bulletin of Entomological Research*, 51(3),

veria bassiana (White Muscardine Fungus).

- CABI. (2022, January). *Sitophilus oryzae (lesser grain weevil)*. CABI Compendium. <https://doi.org/10.1079/cabicompendium.10887>
- Chanbang, Y., Arthur, F. H., Wilde, G. E., & Throne, J. E. (2008). Hull characteristics as related to susceptibility of different varieties of rough rice to *Rhyzopertha dominica* (F.) (Coleoptera: Bostrichidae). *Journal of Stored Products Research*, 44(3), 205–212.
- Ciesielska, Z. (1990). Dynamics and expansion of populations of stored product beetles. *Proceedings of the Sixth International Working Conference on Storedproduct Protection*, 498–507.
- Damayanti, R. R., Himawan, T., & Astuti, L. P. (2013). Penghambatan reproduksi *Rhyzopertha dominica* F. (Coleoptera: Bostrichidae) menggunakan fumigan tablet berbasis minyak mimba. *Jurnal HPT (Hama Penyakit Tumbuhan)*, 1(3), 18–26.
- Destiana, I. D. (2017). Ketahanan Jenis Kemasan Benih Kedelai Terhadap Serangan Hama *Callosobruchus Maculatus*. *EDUFORTECH*, 2(2), 67–76.
- Dewi, E. S. (2017). Potensi pengembangan sorgum sebagai pangan alternatif, pakan ternak dan bioenergi di Aceh. *Jurnal Agroteknologi*, 7(2), 29–34.
- Dobie, P. (1974). The laboratory assessment of the inherent susceptibility of maize varieties to post-harvest infestation by *Sitophilus zeamais* Motsch. (Coleoptera, Curculionidae). *Journal of Stored Products Research*, 10(3–4), 183–197.
- Dobie, P. (1977). The Contribution of the Tropical Stored Products Center to the Study of Insect Resistance in Stored Maize. *Stored Products Info*, 34, 7–22.
- Dobie, P., & Kilminster, A. M. (1978). The Susceptibility of Triticale to Post-Harvest Infestation by *Sitophilus zeamais* Motschulsky, *Sitophilus oryzae* (L.) and *Sitophilus granarius* (L.). *Journal of Stored Products Research*, 14(2–3), 87–93.
- E.A. Heinrich, E.G. Medrano, H. R. R. (1985). *Genetic Evaluation for Insect Resistance in Rice*. 356.
- Edde, P. A. (2012). A review of the biology and control of *Rhyzopertha dominica* (F.) the lesser grain borer. *Journal of Stored Products Research*, 48, 1–18.
- Giga, D. P., Kadzere, I., & Canhao, J. (1993). Bionomics of four strains of *Callosobruchus rhodesianus* (Pic) (Coleoptera: Bruchidae) infesting different
Journal of Stored Products Research, 29(1), 19–26.
- I., Kosukcu, C., & Onder, B. S. (2015). The effects of larval diet developmental time, preadult survival, and wing length in *elanogaster*. *TURKISH JOURNAL OF ZOOLOGY*, 39(3), 395–



- Harianja, Y. R., Sitepu, S. F., & Prasetyo, A. E. (2018). Dampak Penggunaan Insektisida Sistemik terhadap Perkembangan Serangga Penyerbuk Kelapa Sawit *Elaeidobius kamerunicus* Faust (Coleoptera: Curculionidae): Impact of Systemic Insecticide Application on populations *Elaeidobius kamerunicus* Faust (Coleoptera: C. *JURNAL ONLINE AGROTEKNOLOGI*, 6(2), 330–338.
- Hassan, S., Ahmad, M., & Aslam, M. (2014). Assessment of Sitotroga cerealella losses in different sorghum varieties under controlled conditions. *Archives of Phytopathology and Plant Protection*, 47(8), 993–999.
- Hendrival, D. A., & Aryani, D. S. (2019). Susceptibility and Damage Cereals to Infestation *Rhyzopertha dominica* (F.) (Coleoptera: Bostrichidae) in Storage. *Jurnal Agro*, 6, 1.
- Hendrival, H., & Mayasari, E. (2017). Kerentanan dan kerusakan beras terhadap serangan hama pascapanen *Sitophilus zeamais* L. (Coleoptera: Curculionidae). *Jurnal Agro*, 4(2), 68–79.
- Hendrival, H., Putra, R. L., & Aryani, D. S. (2019). Susceptibility of Sorghum Cultivars to *Sitophilus oryzae* L. (Coleoptera: Curculionidae) During Storage. *PLANTA TROPICA*, 7(2), 110–116.
- Hendrival, H., Rahmi, C., Yusnellis, Y., & Wirda, Z. (2022). Comparison Population of *Rhyzopertha dominica* (Coleoptera: Bostrichidae) and Damage Cereals During Storage Period. *PLANTROPICA: Journal of Agricultural Science*, 7(2), 82–91.
- Herlina, L., & Istiaji, B. (2013). *Respon ketahanan beberapa kultivar gandum terhadap hama gudang Sitophilus zeamais (Coleoptera: Dryophthoridae)*. Indonesian Ministry of Agriculture.
- Howe, R. W. (1971). A Parameter For Expressing the Suitability of an Environment for Insect Development. *Journal of Stored Products Research*, 7(1), 63–65.
- Kalshoven, L. G. . (1981). *Pest of Crops in Indonesia*. PT. Ihtiar Baru-Van Houve.
- Kavallieratos, N. G., Athanassiou, C. G., Arthur, F. H., & Throne, J. E. (2012). Cracked Hulls Affect Population Development of *Rhyzopertha dominica* in Rough Rice. *J. Insect Sci*, 12, 38.
- Koten, B. B., Soetrisno, R. D., Ngadiyono, N., & Suwignyo, B. (2012). Produksi tanaman sorgum (*Sorghum bicolor* (L.) Moench) kultivar lokal Rote sebagai hijauan pakan ruminansia pada umur panen dan dosis pupuk urea yang *tin Peternakan*, 36(3), 150–155.



Bangun, I. H., & Nurhajjah, N. (2022). Pengaruh Perlakuan dan Buah Ketumbar dan Aspek Biologi *Stegobium paniceum* (Anobiidae). *Zira'ah Majalah Ilmiah Pertanian*, 47(3), 376–383.

- Lopulalan, C. G. C. (2010). Analisa ketahanan beberapa kultivar padi terhadap serangan hama gudang (*Sitophilus zeamais* Motschulsky). *Jurnal Budidaya Pertanian*, 6(1), 11–16.
- Majeed, M. Z., Mehmood, T., Javed, M., Sellami, F., Riaz, M. A., & Afzal, M. (2015). Biology and management of stored products' insect pest *Rhyzopertha dominica* (Fab.)(Coleoptera: Bostrichidae). *International Journal of Biosciences*, 7(5), 78–93.
- Manueke, J., Tulung, M., Pinontoan, O. R., & Paat, F. J. (2012). Tabel Hidup *Sitophilus oryzae* (Coleoptera; Curculionidae) pada Beras. *Eugenia*, 18(1).
- McGaughey, W. H., Speirs, R. D., & Martin, C. R. (1990). Susceptibility of classes of wheat grown in the United States to stored-grain insects. *Journal of Economic Entomology*, 83(3), 1122–1127.
- Micu, L. M., & Petanec, D. I. (2009). Research regarding changes in lipids and fatty acids in the wheat grain after infestation by *Rhyzopertha dominica*. *Research Journal of Agricultural Science*, 41(1), 251–254.
- Naik, R. H., Mohankumar, S., Naik, S. O., Pallavi, M. S., Srinivasan, M. R., & Chandrasekaran, S. (2016). Influence of food sources on developmental period of *Rhyzopertha dominica*, *Tribolium castaneum* and *Sitophilus oryzae*. *Indian Journal of Plant Protection*, 1(44), 63–68.
- Nemati-Kalkhoran, M., Razmjou, J., Borzoui, E., & Naseri, B. (2018). Comparison of life table parameters and digestive physiology of *Rhyzopertha dominica* (Coleoptera: Bostrichidae) fed on various barley cultivars. *Journal of Insect Science*, 18(2), 31.
- Nonci, N., & Muis, A. (2015). Biology, symptoms of attack and management of corn weevil *Sitophilus zeamais* Motschulsky (Coleoptera: Curculionidae). *Jurnal Penelitian Dan Pengembangan Pertanian*, 34(2), 61–70.
- Nuraini, I. V., Prakoso, B., & Suroto, A. (2022). Survei dan identifikasi hama gudang pada komoditas padi, jagung, dan kedelai di Kecamatan Batuwarno, Wonogiri. *Biofarm: Jurnal Ilmiah Pertanian*, 18(2), 87–95.
- Nurhafidah, N. (2021). Uji Viabilitas Beberapa Jenis Kultivar Jagung (*Zea Mays*) Dengan Menggunakan Metode Yang Berbeda. *Agroplantae: Jurnal Ilmiah Terapan Budidaya Dan Pengelolaan Tanaman Pertanian Dan Perkebunan*, 10(1), 30–39.



982). Development of the lesser grain borer, *Rhyzopertha maizae* kernels as affected by site of larval entry. *Entomologia et Applicata*, 31(4), 391–394.

awan, K., Pramono, E., & Sa'diyah, N. (2019). Pengaruh Suhu Lama Penyimpanan Terhadap Vigor Benih Dan Kecambah ar Super-2. *Agrotek Tropika*, 7(3), 443–449.

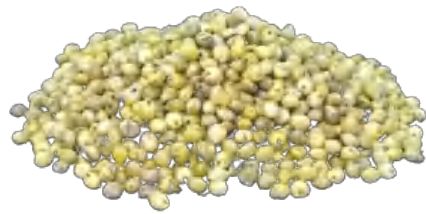
- Perišić, V., Perišić, V., Vukajlović, F., Pešić, S., Predojević, D., Đekić, V., & Luković, K. (2018). Feeding preferences and progeny production of *Rhyzopertha dominica* (Fabricius 1792) (Coleoptera: Bostrichidae) in small grains. *Biologica Nyssana*, 9(1), 55–61. <https://doi.org/10.5281/zenodo.1470852>
- Pertanian, B. (2010). Rencana strategis Badan Penelitian dan Pengembangan Pertanian 2010–2014. *Badan Litbang Pertanian. Jakarta. Kementrian Pertanian.*
- Sánchez-Mariñez, R. I., Cortez-Rocha, M. O., Ortega-Dorame, F., Morales-Valdes, M., & Silveira, M. I. (1997). End-use quality of flour from *Rhyzopertha dominica* infested wheat. *Cereal Chemistry*, 74(4), 481–483.
- Shafique, M., & Chaudry, M. A. (2007). Susceptibility of maize grains to storage insects. *Pakistan Journal of Zoology*, 39(2), 77.
- Sondang, Y. (2021). Karakteristik Morfologi Plasma Nutfah Sorgum Dari Beberapa Daerah Potensial Sumatera Barat. *Journal of Food Crop and Applied Agriculture*, 1(2), 68–77. <https://doi.org/10.32530/jfcaa.v1i2.379>
- Sonyaratri, D. (2006). Kajian daya insektisida ekstrak daun mimba (*Azadirachta indica* A. Juss) dan ekstrak daun mindi (*Melia azedarach* L.) terhadap perkembangan serangga hama gudang *Sitophilus zeamais* Motsch. *Institut Pertanian Bogor.*
- Su, L., Adam, B. D., Arthur, F. H., Lusk, J. L., & Meullenet, J. F. (2019). The economic effects of *Rhyzopertha dominica* on rice quality: Objective and subjective measures. *Journal of Stored Products Research*, 84, 101505.
- Suarni, S. S. (2002). Characteristics of physical properties and chemical composition of several varieties of sorghum seeds. *Stigma*, 10(2), 127–130.
- Toews, M. D., Cuperus, G. W., & Phillips, T. W. (2000). Susceptibility of Eight US Wheat Cultivars to Infestation by *Rhyzopertha dominica* (Coleoptera: Bostrichidae). *Environmental Entomology*, 29(2), 250–255.
- Vardeman, E. A., Campbell, J. F., Arthur, F. H., & Nechols, J. R. (2007). Behavior of female *Rhyzopertha dominica* (Coleoptera: Bostrichidae) in a mono-layer of wheat treated with diatomaceous earth. *Journal of Stored Products Research*, 43(3), 297–301.
- Wulandari, S., Oemry, S., & Pangestinarsih, Y. (2014). Pengaruh Tekstur Butiran Pada Beberapa Komoditas Terhadap Jumlah Imago Hama *Sitophilus oryzae* : Curculionidae) di Laboratorium. *Jurnal Agroekoteknologi imatera Utara*, 2(3), 100209.



LAMPIRAN



(a)



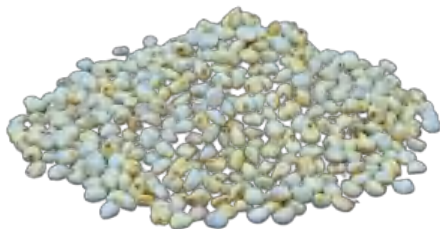
(b)



(c)



(d)



(e)



(f)

Lampiran Gambar 1. Kultivar Sorgum yang Digunakan dalam Penelitian: (a) Suri-4; (b) Kawali; (c) Super-2; (d) Soper-6; (e) Super-1; (f) Numbu





(a)



(b)



(c)



(d)



(e)



(f)



2. Kerusakan biji sorgum yang disebabkan oleh serangan hama *rhizopertha dominica* pada setiap kultivar: (a) Suri-4; (b) Kawali; (c) Super-2; (d) Soper-6; (e) Super-1; (f) Numbu



(a)



(b)



(c)



(d)



(e)



(f)

Lampiran Gambar 3. Fase hidup *Rhyzopertha dominica*: (a) telur pada permukaan biji; (b) larva; (c) larva pada biji sorgum; (d) pupa; (e) pupa di dalam biji sorgum; (f) imago di dalam biji sorgum





(a)



(b)



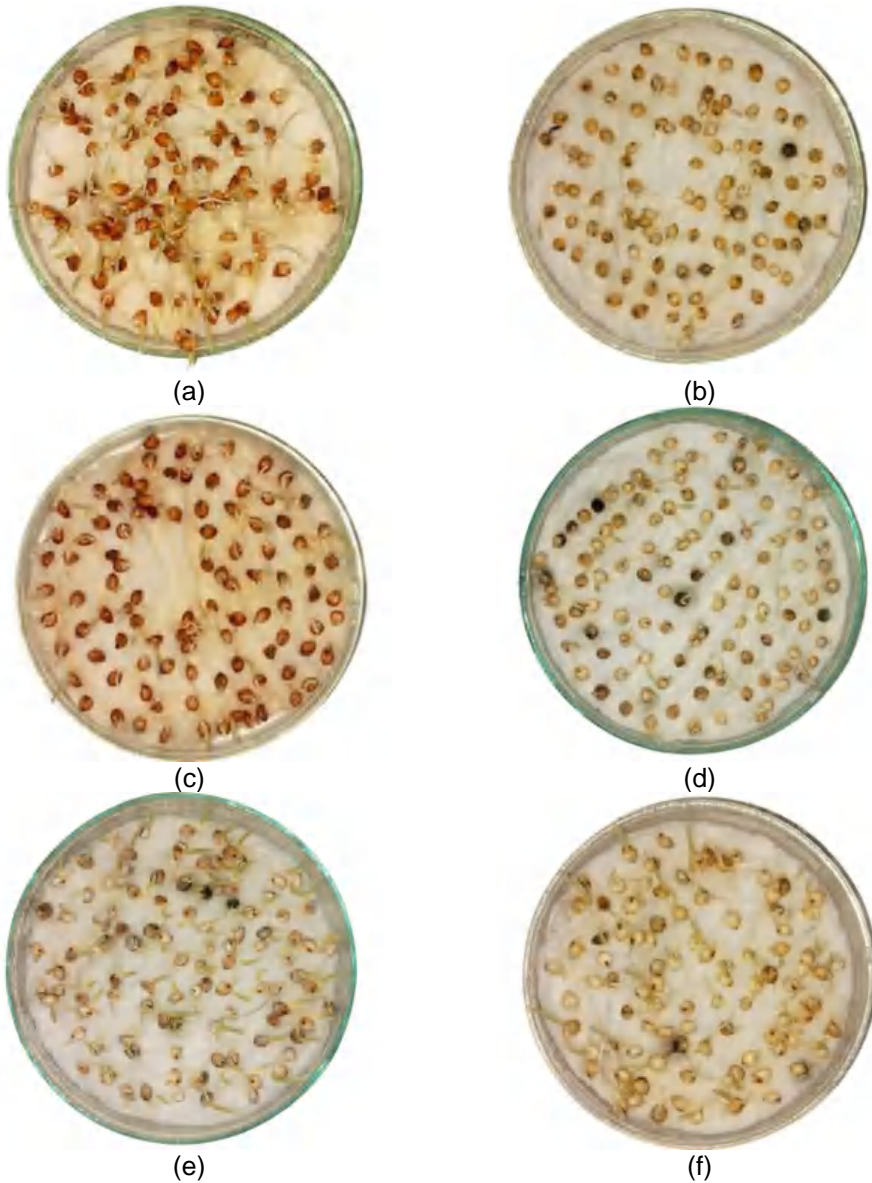
(c)



(d)

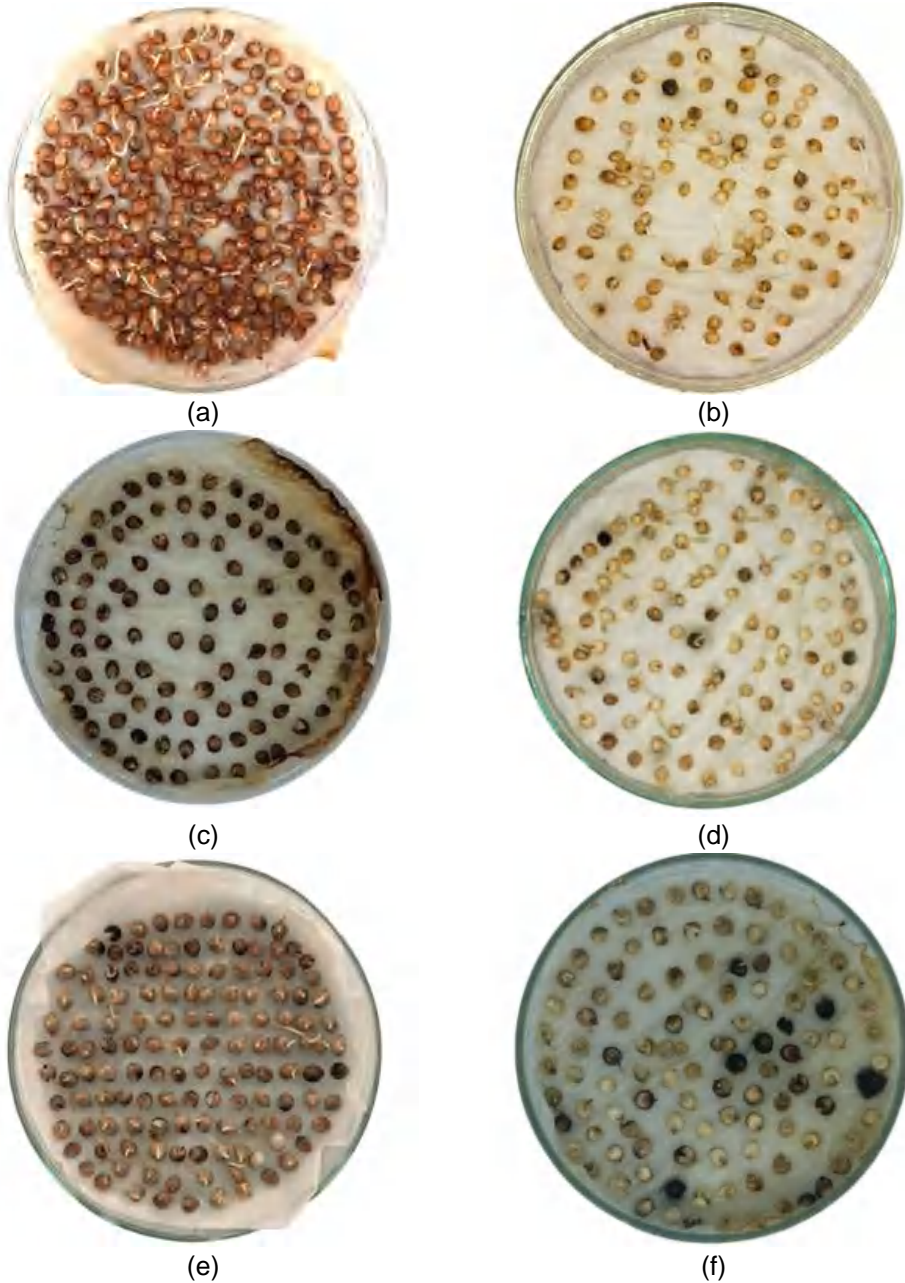
Lampiran Gambar 4. Perbedaan morfologi jantan dan betina *Rhyzopertha dominica*: (a) imago jantan; (b) imago betina; (c) dorsal; (d) ventral





Lampiran Gambar 5. Hasil uji perkecambahan benih awal: (a) Suri-4; (b) Kawali; (c) Super-2; (d) Soper-6; (e) Super-1; (f) Numbu





Lampiran Gambar 6. Hasil uji perkecambahan benih perlakuan akibat serangan serangga *R. dominica*: (a) Suri-4; (b) Kawali; (c) Super-2; (d) Soper-6; (e) Super-1; (f) Numbu



Lampiran Tabel 1. Analisis ragam variabel pengamatan uji kepekaan enam kultivar sorgum terhadap *Rhizopertha dominica*

		Sum of Squares	df	Mean Square	F	Sig.
Mortalitas Imago Infestasi	Between Groups	173.333	5	34.667	2.936	.041
	Within Groups	212.500	18	11.806		
	Total	385.833	23			
Telur	Between Groups	6320.375	5	1264.075	5.107	.004
	Within Groups	4455.250	18	247.514		
	Total	10775.625	23			
Imago	Between Groups	9933.208	5	1986.642	3.872	.015
	Within Groups	9234.750	18	513.042		
	Total	19167.958	23			
jantan	Between Groups	9044.833	5	1808.967	4.226	.010
	Within Groups	7704.500	18	428.028		
	Total	16749.333	23			
betina	Between Groups	414.875	5	82.975	1.122	.384
	Within Groups	1330.750	18	73.931		
	Total	1745.625	23			
Kesintasan Pradewasa	Between Groups	854.512	5	170.902	2.008	.126
	Within Groups	1532.122	18	85.118		
	Total	2386.634	23			
Median Developmental Period	Between Groups	35.000	5	7.000	1.669	.193
	Within Groups	75.500	18	4.194		
	Total	110.500	23			
	Between Groups	15.422	5	3.084	8.779	.000



		Sum of Squares	df	Mean Square	F	Sig.
	Within Groups	6.324	18	.351		
	Total	21.746	23			
Indeks Pertumbuhan	Between Groups	.000	5	.000	.577	.717
	Within Groups	.000	18	.000		
	Total	.000	23			
Biji Rusak	Between Groups	80.357	5	16.071	2.881	.044
	Within Groups	100.405	18	5.578		
	Total	180.762	23			
Penurunan Berat Pakan	Between Groups	12.507	5	2.501	1.653	.197
	Within Groups	27.232	18	1.513		
	Total	39.740	23			
Debu Gerekkan	Between Groups	1.337	5	.267	5.768	.002
	Within Groups	.835	18	.046		
	Total	2.172	23			
		Sum of Squares	df	Mean Square	F	Sig.
Viabilitas Awal	Between Groups	182.208	5	36.442	2.312	.087
	Within Groups	283.750	18	15.764		
	Total	465.958	23			
Viabilitas Akhir	Between Groups	167.333	5	33.467	3.912	.014
	Within Groups	154.000	18	8.556		
	Total	321.333	23			



Lampiran Tabel 2. Deskripsi sorgum kultivar Suri-4

Variabel	Deskripsi
Tahun dilepas	22 November 2014
Asal	Merupakan perbaikan galur Introduksi galur 15020, introduksi dari ICRISAT, India tahun 2002
Umur	Berbunga 50% : ± 55 hst Panen : ± 95 hst
Tinggi tanaman	± 239,4 cm
Kedudukan tangkai	Di pucuk
Sifat/bentuk malai	Terbuka/Terkulai
Panjang malai	± 29 cm
Warna biji	Cokelat tua kemerahan
Ukuran biji	Panjang
Kadar protein	± 15,42%
Kadar lemak	± 3,96%
Kadar karbohidrat	± 64,93%
Kadar Gula (Brix)	± 15,05%
Kadar tanin	± 0,013% b.k
Bobot 1000 biji	± 32,4 gram
Rata-rata hasil	± 4,8 t/ha (KA 10%)
Potensi hasil	± 5,7 t/ha (KA 10%)
Ketahanan	Tahan terhadap hama <i>Aphis</i> , agak tahan terhadap penyakit antraknosa, dan bercak daun
	Fatmawati dan Muahmmad Azrai



Lampiran Tabel 3 Deskripsi sorgum kultivar Kawali

Variabel	Deskripsi
Tahun dilepas	22 Oktober 2001
Asal	India
Umur	Berbunga 50% : \pm 70 hst Panen : \pm 100–110 hst
Tinggi tanaman	\pm 135 cm
Kedudukan tangkai	Di pucuk
Sifat/bentuk malai	Kompak/Elips
Panjang malai	\pm 28–29 cm
Bentuk biji	Bulat
Sifat Biji	Mudah Rontok
Warna biji	Krem
Ukuran biji	3,2; 3,0; 3,4 mm
Kadar protein	\pm 8,81%
Kadar lemak	\pm 1,97%
Kadar karbohidrat	\pm 87,87%
Bobot 1000 biji	\pm 30 gram
Rata-rata hasil	\pm 2,96 t/ha (KA 10%)
Potensi hasil	\pm 4,0–5,0 t/ha (KA 10%)
Ketahanan	Agak tahan terhadap hama <i>Aphis</i> , tahan terhadap penyakit karat, dan bercak daun.
Daerah sebaran	Dapat ditanam di lahan sawah dan tegalan



Lampiran Tabel 4. Deskripsi sorgum kultivar Super-2

Variabel	Deskripsi
Tahun dilepas	18 Desember 2013
Asal	Perbaikan galur 15021, introduksi dari ICRISAT
Umur	Berbunga 50% : \pm 60 hst Panen : \pm 115–120 hst
Tinggi tanaman	\pm 229,7 cm
Kedudukan tangkai	Di pucuk
Sifat/bentuk malai	Agak terserat/Simetris
Panjang malai	\pm 26 cm
Warna biji	Krem kemerahan
Ukuran biji	Panjang 4,63 mm, lebar 3,6 mm, diameter 2,92 mm
Kadar protein	\pm 9,2%
Kadar lemak	\pm 3,1%
Kadar karbohidrat	\pm 75,6%
Kadar Gula (Brix)	\pm 12,7%
Kadar tanin	\pm 0,3%
Bobot 1000 biji	\pm 30,1 gram
Rata-rata hasil	\pm 3,0 t/ha (KA 10%)
Potensi hasil	\pm 6,3 t/ha (KA 10%)
Ketahanan	Tahan hama <i>Aphis</i> , agak tahan antraknosa, karat, dan hawar daun
	Marcia B. P, Sigit B. S, Nuning A, Aviv A, Sumarni S, Fatmawati R, M. Azrai



Lampiran Tabel 5. Deskripsi sorgum kultivar Soper-6

Variabel	Deskripsi
Tahun dilepas	2019
Asal	Perbaikan galur introduksi KT247-1-1-1, introduksi dari ICRISAT, India tahun 2002
Umur	Berbunga 50% : \pm 64 hst Panen : \pm 111 hst
Sifat tanaman	Tidak membentuk anakan dan dapat diratun
Tinggi tanaman	\pm 181 cm
Kedudukan tangkai	Di pucuk
Sifat/bentuk malai	Kompak/Simetris
Warna/Ukuran biji	Krem/Kecil
Kadar protein	\pm 15,05%
Kadar lemak	\pm 2,82%
Kadar karbohidrat	\pm 66,88%
Kadar tanin	\pm 0,07%
Bobot 1000 biji	\pm 24,92 gram
Rata-rata hasil	\pm 4,5 t/ha (KA 10%)
Potensi hasil	\pm 6,0 t/ha (KA 10%)
Ketahanan	Tahan terhadap hama <i>Aphis</i> , sangat tahan terhadap penyakit karat dan tahan penyakit antraknosa
	Fatmawati dan muhammad Azrai, Amin Nur, Karlina S, Aviv Andriani, dan Roy Efendi




Lampiran Tabel 6. Deskripsi sorgum kultivar Super-1

Variabel	Deskripsi
Tahun dilepas	18 Desember 2013
Asal	Perbaikan populasi Watar Hamu Putih hasil koleksi plasma nutfah Balitsereal dari Pulau Sumba, Nusa Tenggara Timur
Umur	Berbunga 50% : ± 56 hst Panen : $\pm 105-110$ hst
Tinggi tanaman	$\pm 204,8$ cm
Kedudukan tangkai	Di pucuk
Sifat/Bentuk malai	Kompak/Lonjong
Panjang malai	$\pm 26,7$ cm
Warna biji	Putih
Kadar protein	$\pm 12,9\%$
Kadar lemak	$\pm 2,2\%$
Kadar karbohidrat	$\pm 71,3\%$
Kadar Gula (Brix)	$\pm 13,5\%$
Kadar tanin	$\pm 0,11\%$
Bobot 1000 biji	$\pm 28,0$ gram
Rata-rata hasil	$\pm 2,6$ t/ha (KA 10%)
Potensi hasil	$\pm 5,7$ t/ha (KA 10%)
	Tahan hama <i>Aphis</i> , tahan antraknosa, karat, dan hawar daun
	Marcia B. P, Sigit B. S, Fatmawati R, Amin Nur, Muzdalifah, Nuning A, Sumarni Singgih, M. Azrai



Lampiran Tabel 7. Deskripsi sorgum kultivar Numbu

Variabel	Deskripsi
Tahun dilepas	22 Oktober 2001
Asal	India
Umur	Berbunga 50% : \pm 69 hst Panen : \pm 100–105 hst
Tinggi tanaman	\pm 187 cm
Kedudukan tangkai	Di pucuk
Sifat/bentuk malai	Kompak/Elips
Panjang malai	\pm 22–23 cm
Bentuk biji	Bulat lonjong
Sifat Biji	Mudah Rontok
Warna biji	Krem
Ukuran biji	4,2; 4,8; 4,4 mm
Kadar protein	\pm 9,12%
Kadar lemak	\pm 3,94%
Kadar karbohidrat	\pm 84,58%
Bobot 1000 biji	\pm 36–37 gram
Rata-rata hasil	\pm 3,11 t/ha (KA 10%)
Potensi hasil	\pm 4,0–5,0 t/ha (KA 10%)
	Tahan terhadap hama <i>Aphis</i> , tahan terhadap penyakit karat, dan bercak daun.
	Dapat ditanam di lahan sawah dan tegalan