

DAFTAR PUSTAKA

- Amiruddin, I., Iladini, K., & Jaya, M. (2023). *Statistik Daerah Kabupaten Kepulauan Selayar* (No. Publikasi : 73010.2327). Badan Pusat Statistika Kabupaten Kepulauan Selayar.
- Blakers, A., Lu, B., & Stocks, M. (2017). 100% renewable electricity in Australia. *Energy*, *133*, 471-482.
- Bank Indonesia (2023, Mei 20) Data Statistika Indikator <https://www.bi.go.id/id/default.aspx>
- Canales, F.A., & Beluco, A. (2014). Modeling pumped hydro storage with the micropower optimization model (HOMER). *Journal of Renewable and Sustainable Energy*, *6*, 043131.
- Connolly, D., Lund, H.B., Mathiesen, B.V., Pican, E., & Leahy, M.J. (2012). The technical and economic implications of integrating fluctuating renewable energy using energy storage. *Renewable Energy*, *43*, 47-60.
- Christian, Dandi. (2022, Maret 6). PLN Bakal Operasikan PLTS Hybrid Selayar, Terbesar di Sulawesi Selatan. *Perusahaan Listrik Negara*. <https://web.pln.co.id/cms/media/siaran-pers/2022/03/pln-bakal-operasikan-plts-hybrid-selayar-terbesar-di-sulawesi-selatan/>
- Ekoh, S.N., Unsal, I., & Maheri, A. (2016). Optimal sizing of wind-PV-pumped hydro energy storage systems. *2016 4th International Symposium on Environmental Friendly Energies and Applications (EFEA)*, 1-6.
- Global Solar Atlas – Indonesia. (2023, September). *Energy Sector Management Assistance Program*. <https://globalsolaratlas.info/map?c=-5.903604,120.447922,11&m=site&s=-5.839398,120.51178&pv=ground,0,8,1000>
- Global Wind Atlas – Indonesia. (2023, September). *Energy Sector Management Assistance Program*. <https://globalwindatlas.info/en/area/Indonesia>
- Globalpetrolprices.com, Indonesia diesel prices, (2023, November 20). https://www.globalpetrolprices.com/Indonesia/diesel_prices/#:~:text=Indonesia%20Diesel%20prices%20The%20current%20price%20of%20diesel,average%20diesel%20price%20is%201.258%20USD%20per%20liter.
- Hariyanto. (2015). *Perancangan dan Aplikasi Pembangkit Listrik Hybrid Energi Surya dan Energi Biogas di Kampung Haur Gembong Kabupaten Sumedang*. Institut Teknologi Nasional Repository.
- Haetae, K., Seoin, B., Eunil, P., & Hyun, C. (2014). Optimal green energy management in Jeju, South Korea – On-grid and off-grid electrification. *Renewable Energy*. *69*. 123–133. 10.1016/j.renene.2014.03.004.

- Inflationtool.com, *Indonesia Inflation Rate* – (2023).
<https://www.inflationtool.com/rates/indonesia>
- International Energy Agency. (2020, Juli). *Capital Cost of Utility Scale Solare PV in Selected Emerging Economies*.
<https://www.iea.org/data-and-statistics/charts/capital-costs-of-utility-scale-solar-pv-in-selected-emerging-economies>
- Jayadi, Ahmad. (2022). *Analisi Perencanaan Pembangkit Listrik Berbasis Energi Terbarukan (angin dan Matahari) pada Sistem Kelistrikan Isolated 20 kV Selayar*. Universitas Hasanuddin Repository.
- Kementerian Energi dan Sumber daya Mineral. (2020, November 26). Pemerintah Mendorong Transisi Energi Melalui Energi Baru Terbarukan dan Efisiensi Energi. *Kementerian Energi dan Sumber Daya Mineral*.
<https://www.esdm.go.id/id/berita-unit/direktorat-jenderal-ketenagalistrikan/pemerintah-mendorong-transisi-energi-melalui-energi-baru-terbarukan-dan-efisiensi-energi>
- Kementerian Energi dan Sumber Daya Mineral. (2023, Februari 1). Rencana Pengembangan Pembangkit Nasional Beri Porsi EBT Lebih Besar. *Kementerian Energi dan Sumber Daya Mineral*.
<https://www.esdm.go.id/id/media-center/arsip-berita/rencana-pengembangan-pembangkit-nasional-beri-porsi-ebt-lebih-besar>
- Liu, G., Rasul, M. G., Amanullah, M. T. O., & Khan, M. M. K. (2012). Techno-economic simulation and optimization of residential grid-connected PV system for the Queensland climate. *Renewable Energy*, 45, 146–155. doi:10.1016/j.renene.2012.02.029
- Luo, X., et al. (2015). Overview of current development in electrical energy storage technologies and the application potential in power system operation. *Applied Energy*, 137: p. 511-536. <https://doi.org/10.1016/j.apenergy.2014.09.081>.
- Makridakis S. and Steven C. (1989). Predictioning Methods. *Wheelwright*.
- Pertamina Indonesia. (2023, November). *Harga Bahan Bakar*
<https://mypertamina.id/fuels-harga>
- Sabih, Adnan. & Putra, Arie R. (2011). *Simulasi Pembangkit Listrik Hibrid Sebagai Power Supply Pada Pulau Lae-lae Sulawesi Selatan*. Universitas Hasanuddin Repository
- Sekretariat Jendral Dewan Energi Nasional. (2021). Laporan Hasil Analisis Neraca Energi Nasional 2021. *Kementrian Energi dan Sumber Daya Mineral*.
<https://den.go.id/index.php/publikasi/documentread?doc=buku-neraca-energi-2021.pdf>

- T. Gonen (1986). New York: McGraw Hili Book Company. Electric Power Distribution System.
- Tradingeconomics.com, Indonesia – *Suku Bunga 2005-2023*.
<https://id.tradingeconomics.com/indonesia/interest-rate#calendar-table>
- Williams, Matt. (2015). Whats the different Types Of Renewable Energy. *Universe Today*.
<https://www.universetoday.com/59029/types-of-renewable-energy/>
- Yonata, Kiki. (2017). *Analisis Tekno-Ekonomi Terhadap Desain Sistem PLTS Pada Bangunan Komersial Di Surabaya*, Indonesia, Institut Teknologi Sepuluh Nopember Repository.
- Zhang, G., Xiao, C., & Razmjooy, N. (2020). *Optimal Operational Strategy of Hybrid PV/Wind Renewable Energy System Using HOMER: A Case Study*. International Journal of Ambient Energy, 1–33.
- Zohuri, Bahman. (2018). Hybrid Energy Systems: Driving Reliable Renewable Sources of Energy Storage. 10.1007/978-3-319-70721-1.

Lampiran

Data Profil Beban Selayar

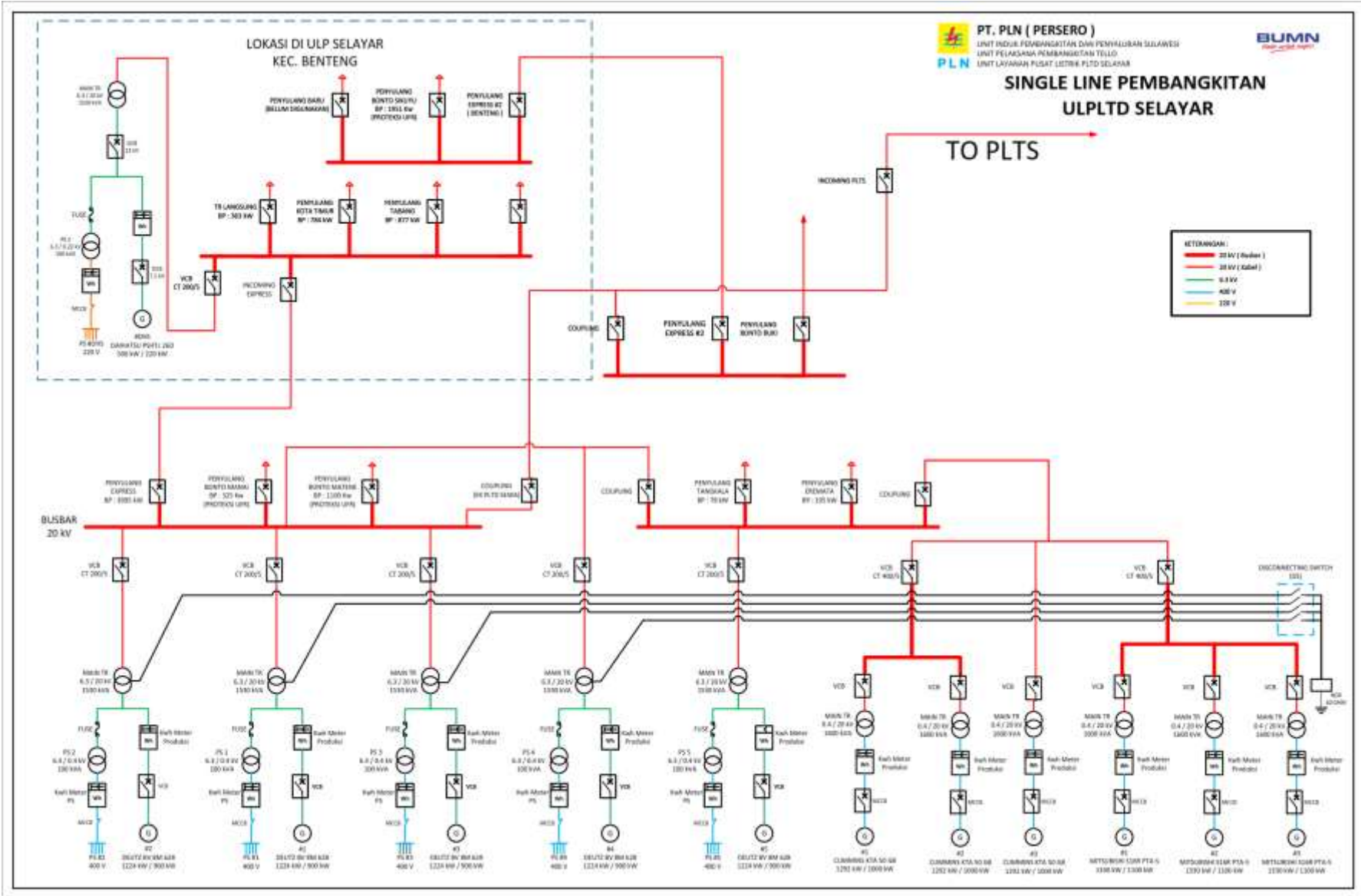
	Beban Bulan (kW)											
	Januari	Februari	Maret	April	Mei	Juni	Juli	Agustus	September	Oktober	November	Desember
0	174.460	188.270	202.840	210.300	221.990	213.320	195.900	200.300	206.010	201.270	200.150	214.670
1	172.260	152.440	177.790	170.760	188.350	173.650	161.890	166.210	156.430	170.710	160.310	191.420
2	172.260	152.440	177.790	170.760	188.350	173.650	161.890	166.210	156.430	170.710	160.310	191.420
3	155.860	146.450	165.440	171.490	194.010	163.980	144.370	167.870	149.650	161.780	152.700	182.680
4	155.890	146.450	165.440	171.490	194.010	163.980	144.370	167.870	149.650	161.780	152.700	182.680
5	155.890	146.450	165.440	171.490	194.010	163.980	144.370	167.870	149.650	161.780	152.700	182.680
6	151.700	147.920	170.210	149.300	159.490	162.790	142.710	151.030	149.370	147.360	149.270	174.000
7	151.700	147.920	170.210	149.300	159.490	162.790	142.710	151.030	149.370	147.360	149.270	174.000
8	151.710	147.920	170.210	149.300	159.490	162.790	142.710	151.030	149.370	147.360	149.270	174.000
9	151.700	147.920	170.210	149.300	159.490	162.790	142.710	151.030	149.370	147.360	149.270	174.000
10	151.700	147.920	170.210	149.300	159.490	162.790	142.710	151.030	149.370	147.360	149.270	174.000
11	151.700	147.920	170.210	149.300	159.490	162.790	142.710	151.030	149.370	147.360	149.270	174.000
12	182.290	192.720	178.940	161.010	207.580	205.530	189.560	194.650	200.130	182.610	187.980	195.570
13	182.290	192.720	178.940	161.010	207.580	205.530	189.560	194.650	200.130	182.610	187.980	195.570
14	182.290	192.720	178.940	161.010	207.580	205.530	189.560	194.650	200.130	182.610	187.980	195.570
15	195.550	189.070	188.670	180.790	215.080	208.530	196.280	194.210	202.130	179.520	191.150	197.210
16	195.550	189.070	188.670	180.790	215.080	208.530	196.280	194.210	202.130	179.520	191.150	197.210
17	172.200	179.040	182.670	205.800	206.360	190.620	185.670	178.740	202.340	202.220	184.680	214.070
18	203.230	176.600	203.220	218.370	226.090	234.110	216.940	219.010	226.690	237.040	229.960	233.420
19	226.520	219.710	228.990	226.670	242.690	238.710	224.380	225.620	236.530	235.060	229.610	241.160
20	210.630	211.410	222.600	220.570	235.980	229.010	220.850	214.740	229.060	222.510	218.510	233.920
21	210.630	211.410	222.600	220.570	235.980	229.010	220.850	214.740	220.450	222.510	218.510	233.920
22	193.100	188.270	202.840	210.030	221.990	213.320	195.900	200.300	206.010	201.270	200.150	214.670
23	193.100	188.270	202.840	210.030	221.990	213.320	195.900	200.300	206.010	201.270	200.150	214.670



PT. PLN (PERSERO)
 UNIT INDUK PEMBANGKITAN DAN PENYULURAN SELAWESI
 UNIT PELAKSANA PEMBANGKITAN TELLO
 UNIT LAYANAN PUSAT LISTRIK PLTD SELAYAR



**SINGLE LINE PEMBANGKITAN
 ULPLTD SELAYAR**



SINGLE LINE DIAGRAM PLTS HYBRID SELAYAR

