

## DAFTAR PUSTAKA

- Arsyad, S. (2010). *Konservasi Tanah & Air*. Bogor: IPB Press.
- Aryanto, D., & Priyana, Y. (2018). *Potensi Pemanenan Air Hujan (Rain Water Harvesting) untuk Kebutuhan Rumah Tangga di Desa Klunggen Kecamatan Slogohimo Kabupaten Wonogiri*. Skripsi, Universitas Muhammadiyah Surakarta, Fakultas Geografi, Surakarta.
- Asdak, C. (2023). *Hidrologi dan pengelolaan daerah aliran sungai*. Yogyakarta: UGM Press.
- Ashriyati, H. (2011). *Kajian Kerentanan pada Wilayah Terintrusi Air Laut di DKI Jakarta*. Tesis, Universitas Indonesia, Pascasarjana Ilmu Geografi, Depok.
- Asmaranto, R. (2012). *Identifikasi Air Tanah (Groundwater) Menggunakan Metode Resistivitas (Geolistrik dengan Software IPI2win)*. Malang: Universitas Brawijaya.
- Azwar, H. (2009). *Pemodelan Lapisan Air Tanah Dalam (Akuifer) Di Desa Telogorejo Kab. Demak Berdasarkan Data Tahanan Jenis*. Jakarta.
- Bear, J. (1979). *Hydraulics of groundwater*. New York: McGraw-Hill.
- Broto, S., & Afifah, R. S. (2008). Pengolahan Data Geolistrik dengan Metode. *Jurnal Teknik*, 2(29).
- Budiarjo, & Hendrayana, H. (2019). *Analisis Geometri dan Konfigurasi Sistem Akuifer Air Tanah berdasarkan Data Geofisika di Kabupaten Sleman Bagian Timur*. Artikel Riset, Universitas Gajah Mada, Yogyakarta.
- Danaryanto, H., & Said, H. D. (2004). *Air tanah di Indonesia dan pengelolaannya*. Departemen Energi dan Sumber Daya Mineral.
- Effendi, H. (2003). *Telaah Kualitas Air Bagi Pengelolaan Sumber Daya Dan Lingkungan Perairan*. Yogyakarta: Kanisius.
- Effendy, V. N. (2012). *Aplikasi Metode Geolistrik Konfigurasi Dipole-dipole untuk Mendeteksi Mineral Mangan (Physical Modeling)*. Universitas Jember, Jember.
- Fetter, C. W. (1988). *Applied Hydrogeology* (2 ed.). London: Merrill Publishing Company.
- Effendi, H., S., As'ari, & Tamuntuan, G. H. (2015). Identifikasi patahan Manado dengan menggunakan metode geolistrik konfigurasi wenner- schlumberger kota Manado. *Jurnal Ilmiah Sains*, 2(15).



- Hanifa, D., Ibrahim, S., & Siregar, S. S. (2016). Penentuan Lapisan Akuifer Air Tanah dengan Metode Geolistrik Konfigurasi Schlumberger di Desa Sungai Jati Kecamatan Mataraman Kabupaten Banjar Kalimantan Selatan. *Jurnal Fisika FLUX*, 1(13), 30-30.
- Hendrajaya, L., & Arif, I. (1990). *Geolistrik tahanan jenis*. ITB. Bandung: Laboratorium Fisika Bumi.
- Herlambang, A. (1996). *Kualitas Air tanah Dangkal di Kabupaten Bekasi*. Program Pascasarjana IPB, Bogor.
- Kodoatie, R. J. (2005). *Pengelolaan Sumber Daya Air Terpadu*. Yogyakarta: Andi Offset.
- Kodoatie, R. J. (2012). *Tata Ruang Air Tanah*. Yogyakarta: Andi.
- Kodoatie, R. J., & Sjarief, R. (2010). *Tata Ruang Air*. Penerbit Andi.
- Kumalasari, F., & Satoto, Y. (2011). *Teknik praktis mengolah air kotor menjadi air bersih hingga layak diminum*. Bekasi: Laskar Aksara.
- Lowrie, W. (2007). *Fundamentals of Geophysics* (2 ed.). Cambridge: Cambridge University Press.
- Magetsari, N. A. (2000). *Geologi Fisik*. Bandung: ITB Press.
- Prameswari, F. W., Bahri, A. S., & Parnadi, W. (2012, September). Analisa Resistivitas Batuan dengan Menggunakan Parameter Dar Zarrouk dan Konsep Anisotropi. *Jurnal sains dan seni its*, 1(1), 15-20.
- Prastistho, B., Pratiknyo, Puji, Rodhi, Achmad, Prasetyadi, . . . Kurnia, Y. (2018). *Hubungan struktur geologi dan sistem air tanah*. Yogyakarta: LPPM UPN "Yogyakarta" Press.
- Reynolds, J. M. (1997). *An Introduction to Applied and Environmental Geophysics*. John Willey.
- Santoso, D. (2002). *Pengantar Teknik Geofisika*. Bandung: ITB.
- Sharma, P. V. (1997). *Environmental and Engineering Geophysics*. Cambridge: Cambridge University Press.
- Simpn, I. N. (2015). *Solusi Permasalahan Sumur Bor versus Sumur Gali dengan Metoda Geolistrik dan Uji Pemompaan Sumur (Suatu Studi Kasus di Bugbug Karangasem Bali)*. Prosiding, Universitas Udayana, Jurusan Fisika MIPA.

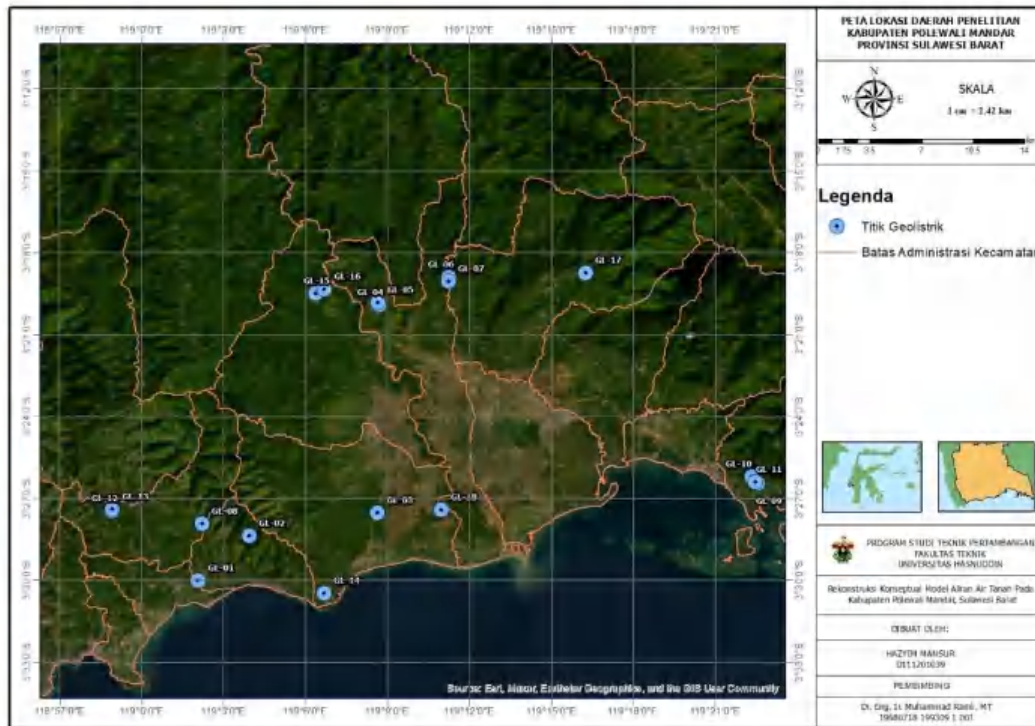


Sono, S., & Takeda, K. (1977). *Hidrologi untuk pengairan*. Jakarta: Adnya Paramita.

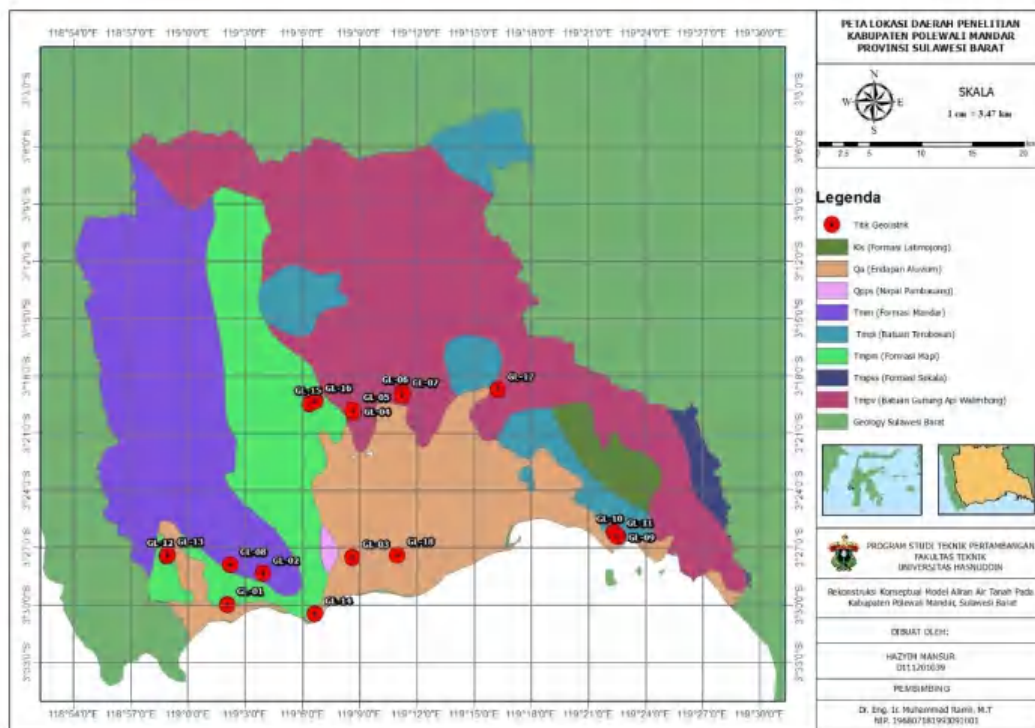
- Sujatmiko, A. (2009). *Kajian Pengelolaan Air Tanah di Kawasan Pariwisata Parangtritis Kabupaten Bantul Yogyakarta*. Tesis, Universitas Diponegoro, Program Magister Ilmu , Semarang.
- Suyoso. (2003). *Listrik Magnet*. Yogyakarta: UNY.
- Syukri, M. (2020). *Dasar-dasar metode geolistrik*. (R. Safitri, Penyunt.) Syiah Kuala University Press.
- Telford, W. M., Geldart, L. P., & Sheriff, R. E. (1990). *Applied Geophysics* (2 ed.). Cambridge University Press.
- Todd, D. K. (1955). Ground-Water Flow in Relation to a Flooding Stream. 2(81), 1-20.
- Todd, D. K. (1980). *Ground Water Hydrology* (2 ed.). Wiley.
- Todd, D. K., & Mays, L. W. (2005). *Groundwater Hydrology* (Third ed.). New York: John Wiley & Sons.
- Verhoef, P. W. (1994). *Geologi Untuk Teknik Sipil*. Jakarta: Erlangga.
- Wahyudi, A., Azwar, A., & Muhandi, M. (2021). Penggunaan Metode Geolistrik Resistivitas untuk Identifikasi Lapisan Bawah Permukaan Gunung Tujuh Kabupaten Kayong Utara. *Jurnal Fisika Unand*, 1(10).
- Wijaya, A. S. (2015). Aplikasi Metode Geolistrik Resistivitas Konfigurasi Wenner Untuk. *Jurnal Fisika Indonesia*, 55(19).
- Zohdy, A., Eaton, G. P., & Mabey, D. R. (1980). *Application of Surface Geophysics to Groundwater Investigation* . Washington.



Lampiran 1 Peta citra satelit daerah penelitian



Lampiran 2 Peta geologi daerah penelitian



## Lampiran 3 Data hasil pengukuran lapangan

**DATA HASIL PENGUKURAN LAPANGAN GL-01**

Koordinat : 3° 30' 29,599" S Tanggal : 8 Januari 2024  
 : 119° 6' 40,543" E Lokasi : Desa Laliko  
 Arah Lintasan : N 85° E Elevasi : 42 mdpl

No	MN/2 (m)	AB/2 (m)	K	PEMBACAAN I			PEMBACAAN II			AVERAGE
				$\Delta V$ (mV)	I (mA)	$\rho_{\alpha}$ (Ohm-m)	$\Delta V$ (mV)	I (mA)	$\rho_{\alpha}$ (Ohm-m)	$\rho_{\alpha}$ (Ohm-m)
1	0.5	1.5	6.286	549.0	109.8	31.43	554.0	109.7	31.75	31.59
2	0.5	2.5	18.857	301.0	109.8	51.69	297.0	109.8	51.01	51.35
3	0.5	4	49.500	145.9	109.7	65.83	143.5	109.7	64.75	65.29
4	0.5	6	112.357	76.5	109.7	78.35	76.0	109.7	77.84	78.10
5	0.5	8	200.357	46.5	109.7	84.93	45.7	109.6	83.54	84.24
6	2.5	8	36.300	273.7	109.8	90.49	268.3	109.8	88.70	89.59
7	2.5	10	58.929	175.9	109.8	94.40	176.0	109.7	94.54	94.47
8	2.5	15	137.500	66.5	109.7	83.35	68.2	109.7	85.48	84.42
9	2.5	20	247.500	40.1	109.8	90.39	41.0	109.7	92.50	91.45
10	2.5	30	561.786	21.2	109.7	108.57	22.2	109.8	113.59	111.08
11	10	30	125.714	95.0	109.8	108.77	101.2	109.8	115.87	112.32
12	10	40	235.714	50.1	109.8	107.55	50.6	109.8	108.63	108.09
13	10	50	377.143	27.0	109.7	92.82	28.5	109.7	97.98	95.40
14	10	60	550.000	15.5	109.8	77.64	16.4	109.8	82.15	79.90
15	10	75	868.214	6.2	109.8	49.02	7.4	109.8	58.51	53.77
16	25	75	314.286	16.4	109.8	46.94	17.4	109.8	49.80	48.37
17	25	100	589.286	5.7	109.8	30.59	5.8	109.7	31.16	30.87
18	25	150	1375.000	0.9	109.8	11.27	1.0	109.7	12.53	11.90



## DATA HASIL PENGUKURAN LAPANGAN GL-02

Koordinat : 3° 30' 0,850" S      Tanggal : 21 Maret 2023  
                   : 119° 2' 3,876" E      Lokasi : Desa Batulaya  
 Arah Lintasan : N 326° E      Elevasi : 39 mdpl

No	MN/2 (m)	AB/2 (m)	K	PEMBACAAN I			PEMBACAAN II			AVERAGE
				$\Delta V$ (mV)	I (mA)	$\rho_{\alpha}$ (Ohm-m)	$\Delta V$ (mV)	I (mA)	$\rho_{\alpha}$ (Ohm-m)	$\rho_{\alpha}$ (Ohm-m)
1	0.5	1.5	6.286	81.2	100.2	5.09	79.4	104.1	4.79	4.94
2	0.5	2.5	18.857	24.1	104.0	4.37	24.0	106.0	4.27	4.32
3	0.5	4	49.500	7.9	105.7	3.70	8.4	106.0	3.92	3.81
4	0.5	6	112.357	2.7	106.7	2.84	2.9	107.2	3.04	2.94
5	0.5	8	200.357	0.3	107.0	0.56	0.4	107.1	0.75	0.66
6	2.5	8	36.300	11.3	107.1	3.83	12.0	106.9	4.07	3.95
7	2.5	10	58.929	6.8	106.9	3.75	6.3	107.1	3.47	3.61
8	2.5	15	137.500	1.7	106.9	2.19	1.4	107.3	1.79	1.99
9	2.5	20	247.500	0.5	107.3	1.15	0.6	107.3	1.38	1.27
10	2.5	30	561.786	3.5	107.2	18.34	3.5	107.3	18.32	18.33
11	10	30	125.714	0.8	107.1	0.94	0.7	107.5	0.82	0.88
12	10	40	235.714	0.8	107.1	1.76	0.7	107.5	1.53	1.65
13	10	50	377.143	0.6	107.2	2.11	0.5	107.7	1.75	1.93
14	10	60	550.000	0.7	107.2	3.59	0.5	108.1	2.54	3.07
15	10	75	868.214	0.2	107.2	1.62	0.2	108.3	1.60	1.61
16	25	75	314.286	1.1	107.3	3.22	1.1	107.1	3.23	3.22
17	25	100	589.286	0.2	107.3	1.10	0.4	107.8	2.19	1.64
18	25	150	1375.000	0.1	107.1	1.28	0.2	107.1	2.57	1.93



### DATA HASIL PENGUKURAN LAPANGAN GL-03

Koordinat : 3° 27' 32,195" S Tanggal : 21 Maret 2023  
 : 119° 8' 38,371" E Lokasi : Desa Lagiagi  
 Arah Lintasan : N 236° E Elevasi : 14 mdpl

No	MN/2 (m)	AB/2 (m)	K	PEMBACAAN I			PEMBACAAN II			AVERAGE
				$\Delta V$ (mV)	I (mA)	$\rho_\alpha$ (Ohm-m)	$\Delta V$ (mV)	I (mA)	$\rho_\alpha$ (Ohm-m)	$\rho_\alpha$ (Ohm-m)
1	0.5	1.5	6.286	60.5	102.8	3.70	71.9	107.7	4.20	3.95
2	0.5	2.5	18.857	23.5	106.0	4.18	23.1	106.7	4.08	4.13
3	0.5	4	49.500	5.9	106.4	2.74	6.9	106.5	3.21	2.98
4	0.5	6	112.357	1.7	107.0	1.79	2.4	107.2	2.52	2.15
5	0.5	8	200.357	0.5	106.6	0.94	0.3	107.3	0.56	0.75
6	2.5	8	36.300	10.3	106.3	3.52	10.5	107.7	3.54	3.53
7	2.5	10	58.929	8.1	106.7	4.47	7.4	106.5	4.09	4.28
8	2.5	15	137.500	1.1	106.5	1.42	1.0	106.7	1.29	1.35
9	2.5	20	247.500	0.9	106.0	2.10	2.1	107.1	4.85	3.48
10	2.5	30	561.786	0.1	105.9	0.53	0.5	106.0	2.65	1.59
11	10	30	125.714	2.7	105.2	3.23	3.5	106.1	4.15	3.69
12	10	40	235.714	1.8	105.4	4.03	1.9	105.9	4.23	4.13
13	10	50	377.143	1.2	105.1	4.31	0.8	105.7	2.85	3.58
14	10	60	550.000	0.2	105.3	1.04	0.3	106.1	1.56	1.30
15	10	75	868.214	0.1	105.4	0.82	0.2	106.4	1.63	1.23
16	25	75	314.286	0.1	104.4	0.30	0.2	104.8	0.60	0.45
17	25	100	589.286	0.1	104.3	0.56	0.2	105.9	1.11	0.84





## DATA HASIL PENGUKURAN LAPANGAN GL-04

Koordinat : 3° 27' 25,081" S Tanggal : 10 Januari 2024  
 : 119° 10' 58,798" E Lokasi : Desa Katumbangan  
 Arah Lintasan : N 73° E Elevasi : 7 mdpl

No	MN/2 (m)	AB/2 (m)	K	PEMBACAAN I			PEMBACAAN II			AVERAGE
				$\Delta V$ (mV)	I (mA)	$\rho_{\alpha}$ (Ohm-m)	$\Delta V$ (mV)	I (mA)	$\rho_{\alpha}$ (Ohm-m)	$\rho_{\alpha}$ (Ohm-m)
1	0.5	1.5	6.286	378.3	109.1	21.80	376.7	109.1	21.70	21.75
2	0.5	2.5	18.857	137.5	108.8	23.83	114.8	109.2	19.82	21.83
3	0.5	4	49.500	46.8	109.2	21.21	31.7	109.2	14.37	17.79
4	0.5	6	112.357	23.5	109.3	24.16	23.3	109.2	23.97	24.07
5	0.5	8	200.357	126.4	109.3	231.70	128.2	109.3	235.00	233.35
6	2.5	8	36.300	89.4	109.4	29.66	87.9	109.3	29.19	29.43
7	2.5	10	58.929	47.0	109.3	25.34	46.4	109.3	25.02	25.18
8	2.5	15	137.500	15.3	109.4	19.23	15.0	109.4	18.85	19.04
9	2.5	20	247.500	21.7	108.9	49.32	21.6	109.4	48.87	49.09
10	2.5	30	561.786	0.8	109.4	4.11	0.7	109.4	3.59	3.85
11	10	30	125.714	6.9	109.6	7.91	6.6	109.5	7.58	7.75
12	10	40	235.714	1.2	109.3	2.59	1.3	109.5	2.80	2.69
13	10	50	377.143	0.5	109.5	1.72	0.5	109.5	1.72	1.72
14	10	60	550.000	0.3	109.0	1.51	0.4	109.6	2.01	1.76
15	10	75	868.214	0.2	109.6	1.58	0.1	109.6	0.79	1.19
16	25	75	314.286	0.4	109.7	1.15	0.2	109.7	0.57	0.86
17	25	100	589.286	0.2	109.7	1.07	0.2	109.7	1.07	1.07
18	25	150	1375.000	0.1	109.6	1.25	0.1	109.6	1.25	1.25



## DATA HASIL PENGUKURAN LAPANGAN GL-05

Koordinat : 3° 28' 22,871" S Tanggal : 21 Maret 2023  
                   : 119° 3' 56,174" E Lokasi : Desa Pallis  
 Arah Lintasan : N 23° E Elevasi : 341 mdpl

No	MN/2 (m)	AB/2 (m)	K	PEMBACAAN I			PEMBACAAN II			AVERAGE
				$\Delta V$ (mV)	I (mA)	$\rho_{\alpha}$ (Ohm-m)	$\Delta V$ (mV)	I (mA)	$\rho_{\alpha}$ (Ohm-m)	$\rho_{\alpha}$ (Ohm-m)
1	0.5	1.5	6.286	290.0	107.5	16.96	288.1	106.5	17.00	16.98
2	0.5	2.5	18.857	86.0	107.5	15.09	86.5	107.5	15.17	15.13
3	0.5	4	49.500	23.5	107.4	10.83	25.5	107.7	11.72	11.28
4	0.5	6	112.357	8.9	107.1	9.34	9.3	107.7	9.70	9.52
5	0.5	8	200.357	5.4	107.4	10.07	6.1	107.4	11.38	10.73
6	2.5	8	36.300	40.4	107.1	13.69	36.3	107.9	12.21	12.95
7	2.5	10	58.929	25.2	107.1	13.87	28.3	107.2	15.56	14.71
8	2.5	15	137.500	12.0	107.1	15.41	13.5	107.5	17.27	16.34
9	2.5	20	247.500	6.0	107.2	13.85	6.9	107.6	15.87	14.86
10	2.5	30	561.786	2.1	107.1	11.02	2.5	107.5	13.06	12.04
11	10	30	125.714	18.5	107.1	21.72	19.0	106.9	22.34	22.03
12	10	40	235.714	6.3	106.5	13.94	7.0	106.7	15.46	14.70
13	10	50	377.143	3.4	106.5	12.04	3.9	106.4	13.82	12.93
14	10	60	550.000	0.9	106.9	4.63	1.1	106.7	5.67	5.15
15	10	75	868.214	0.7	106.8	5.69	0.8	107.7	6.45	6.07
16	25	75	314.286	3.0	106.5	8.85	3.7	106.8	10.89	9.87
17	25	100	589.286	0.3	106.1	1.67	1.3	106.8	7.17	4.43
18	25	150	1375.000	0.5	105.7	6.50	0.6	107.1	7.70	7.11



## DATA HASIL PENGUKURAN LAPANGAN GL-06

Koordinat : 3° 27' 56,030" S Tanggal : 8 Januari 2024  
 : 119° 2' 13,021" E Lokasi : Desa Napo  
 Arah Lintasan : N 88° E Elevasi : 189 mdpl

No	MN/2 (m)	AB/2 (m)	K	PEMBACAAN I			PEMBACAAN II			AVERAGE
				$\Delta V$ (mV)	I (mA)	$\rho_{\alpha}$ (Ohm-m)	$\Delta V$ (mV)	I (mA)	$\rho_{\alpha}$ (Ohm-m)	$\rho_{\alpha}$ (Ohm-m)
1	0.5	1.5	6.286	158.4	109.4	9.10	165.8	109.7	9.50	9.30
2	0.5	2.5	18.857	111.6	109.8	19.17	110.8	109.7	19.05	19.11
3	0.5	4	49.500	19.0	109.7	8.57	18.7	109.7	8.44	8.51
4	0.5	6	112.357	42.9	109.7	43.94	47.1	109.7	48.24	46.09
5	0.5	8	200.357	2.9	109.7	5.30	4.3	109.7	7.85	6.58
6	2.5	8	36.300	27.2	109.7	9.00	26.4	109.7	8.74	8.87
7	2.5	10	58.929	14.0	109.6	7.53	13.4	109.7	7.20	7.36
8	2.5	15	137.500	3.7	109.7	4.64	4.4	109.4	5.53	5.08
9	2.5	20	247.500	1.1	109.7	2.48	1.3	109.2	2.95	2.71
10	2.5	30	561.786	1.1	109.7	5.63	0.6	109.7	3.07	4.35
11	10	30	125.714	4.5	109.7	5.16	4.8	109.6	5.51	5.33
12	10	40	235.714	1.2	109.7	2.58	1.7	109.7	3.65	3.12
13	10	50	377.143	0.5	109.7	1.72	0.7	109.7	2.41	2.06
14	10	60	550.000	0.3	109.7	1.50	0.5	109.7	2.51	2.01
15	10	75	868.214	0.3	109.1	2.39	0.1	109.7	0.79	1.59
16	25	75	314.286	15.9	109.3	45.72	14.3	109.3	41.12	43.42
17	25	100	589.286	7.0	109.1	37.81	6.7	109.2	36.16	36.98
18	25	150	1375.000	2.9	109.3	36.48	3.3	109.0	41.63	39.06



## DATA HASIL PENGUKURAN LAPANGAN GL-07

Koordinat : 3° 26' 27,018" S Tanggal : 10 Januari 2024  
 : 119° 22' 34,840" E Lokasi : Desa Rea  
 Arah Lintasan : N 311° E Elevasi : 18 mdpl

No	MN/2 (m)	AB/2 (m)	K	PEMBACAAN I			PEMBACAAN II			AVERAGE
				$\Delta V$ (mV)	I (mA)	$\rho_{\alpha}$ (Ohm-m)	$\Delta V$ (mV)	I (mA)	$\rho_{\alpha}$ (Ohm-m)	$\rho_{\alpha}$ (Ohm-m)
1	0.5	1.5	6.286	404.4	109.2	23.28	404.9	109.2	23.31	23.29
2	0.5	2.5	18.857	404.6	109.3	69.80	401.9	109.3	69.34	69.57
3	0.5	4	49.500	175.9	108.8	80.03	180.9	108.8	82.30	81.17
4	0.5	6	112.357	74.8	107.9	77.89	71.7	107.9	74.66	76.28
5	0.5	8	200.357	32.4	108.2	60.00	33.3	108.2	61.66	60.83
6	2.5	8	36.300	131.0	108.2	43.95	133.1	108.2	44.65	44.30
7	2.5	10	58.929	76.6	108.1	41.76	76.5	108.1	41.70	41.73
8	2.5	15	137.500	27.5	108.7	34.79	27.6	108.7	34.91	34.85
9	2.5	20	247.500	14.3	108.9	32.50	14.5	109.0	32.92	32.71
10	2.5	30	561.786	5.7	108.6	29.49	6.1	108.1	31.70	30.59
11	10	30	125.714	26.2	108.6	30.33	28.2	108.2	32.76	31.55
12	10	40	235.714	14.7	108.5	31.94	14.8	108.5	32.15	32.04
13	10	50	377.143	8.6	106.5	30.45	8.0	106.9	28.22	29.34
14	10	60	550.000	5.9	108.1	30.02	6.6	108.1	33.58	31.80
15	10	75	868.214	3.1	106.7	25.22	3.9	106.8	31.70	28.46
16	25	75	314.286	13.8	106.8	40.61	12.8	106.8	37.67	39.14
17	25	100	589.286	7.1	108.3	38.63	6.9	108.5	37.48	38.05
18	25	150	1375.000	4.1	108.6	51.91	4.2	108.6	53.18	52.54



## DATA HASIL PENGUKURAN LAPANGAN GL-08

Koordinat : 3° 26' 24,855" S Tanggal : 11 Januari 2024  
 : 119° 22' 30,041" E Lokasi : Desa Kuajang  
 Arah Lintasan : N 90° E Elevasi : 19 mdpl

No	MN/2 (m)	AB/2 (m)	K	PEMBACAAN I			PEMBACAAN II			AVERAGE
				$\Delta V$ (mV)	I (mA)	$\rho_{\alpha}$ (Ohm-m)	$\Delta V$ (mV)	I (mA)	$\rho_{\alpha}$ (Ohm-m)	$\rho_{\alpha}$ (Ohm-m)
1	0.5	1.5	6.286	1,306.0	109.5	74.97	1,307.0	109.5	75.03	75.00
2	0.5	2.5	18.857	554.0	109.1	95.75	556.0	109.6	95.66	95.71
3	0.5	4	49.500	192.8	109.6	87.08	196.7	109.6	88.84	87.96
4	0.5	6	112.357	69.8	109.3	71.75	68.7	109.2	70.69	71.22
5	0.5	8	200.357	20.6	109.1	37.83	21.7	109.2	39.81	38.82
6	2.5	8	36.300	127.6	109.2	42.42	127.1	109.2	42.25	42.33
7	2.5	10	58.929	68.5	105.1	38.41	68.0	105.7	37.91	38.16
8	2.5	15	137.500	27.1	104.9	35.52	27.7	105.0	36.27	35.90
9	2.5	20	247.500	15.3	108.0	35.06	16.8	108.1	38.46	36.76
10	2.5	30	561.786	6.7	109.6	34.34	7.0	109.6	35.88	35.11
11	10	30	125.714	40.9	109.6	46.91	41.4	109.7	47.44	47.18
12	10	40	235.714	17.4	109.5	37.46	18.3	109.0	39.57	38.51
13	10	50	377.143	9.5	109.5	32.72	11.3	109.6	38.88	35.80
14	10	60	550.000	5.1	108.6	25.83	6.5	108.6	32.92	29.37
15	10	75	868.214	2.1	108.5	16.80	4.0	108.5	32.01	24.41
16	25	75	314.286	11.0	108.4	31.89	12.1	108.5	35.05	33.47
17	25	100	589.286	6.8	109.8	36.49	6.2	109.8	33.27	34.88
18	25	150	1375.000	4.0	109.0	50.46	3.8	109.1	47.89	49.18



## DATA HASIL PENGUKURAN LAPANGAN GL-09

Koordinat : 3° 26' 12,809" S Tanggal : 11 Januari 2024  
 : 119° 22' 21,121" E Lokasi : Desa Kuajang  
 Arah Lintasan : N 276° E Elevasi : 22 mdpl

No	MN/2 (m)	AB/2 (m)	K	PEMBACAAN I			PEMBACAAN II			AVERAGE
				$\Delta V$ (mV)	I (mA)	$\rho_{\alpha}$ (Ohm-m)	$\Delta V$ (mV)	I (mA)	$\rho_{\alpha}$ (Ohm-m)	$\rho_{\alpha}$ (Ohm-m)
1	0.5	1.5	6.286	2,716.0	103.2	165.43	2,714.0	103.2	165.31	165.37
2	0.5	2.5	18.857	697.0	105.6	124.46	700.0	105.1	125.59	125.03
3	0.5	4	49.500	166.8	94.5	87.37	168.3	94.3	88.34	87.86
4	0.5	6	112.357	61.6	107.2	64.56	64.5	107.3	67.54	66.05
5	0.5	8	200.357	28.0	107.5	52.19	28.6	107.5	53.30	52.75
6	2.5	8	36.300	173.6	107.5	58.62	185.2	107.5	62.54	60.58
7	2.5	10	58.929	93.1	109.0	50.33	93.9	109.0	50.77	50.55
8	2.5	15	137.500	33.1	107.4	42.38	33.3	107.4	42.63	42.50
9	2.5	20	247.500	18.6	104.9	43.88	19.5	104.9	46.01	44.95
10	2.5	30	561.786	6.6	106.0	34.98	7.9	105.9	41.91	38.44
11	10	30	125.714	34.3	106.0	40.68	40.6	105.9	48.20	44.44
12	10	40	235.714	21.0	109.2	45.33	21.4	109.2	46.19	45.76
13	10	50	377.143	10.9	108.7	37.82	11.8	108.7	40.94	39.38
14	10	60	550.000	5.3	108.5	26.87	6.5	108.5	32.95	29.91
15	10	75	868.214	3.7	108.2	29.69	3.4	108.2	27.28	28.49
16	25	75	314.286	11.8	108.3	34.24	12.7	108.1	36.92	35.58
17	25	100	589.286	5.2	108.2	28.32	6.2	108.2	33.77	31.04
18	25	150	1375.000	3.5	109.0	44.15	3.5	109.1	44.11	44.13



## DATA HASIL PENGUKURAN LAPANGAN GL-10

Koordinat : 3° 27' 28,982" S Tanggal : 8 Januari 2024  
                   : 118° 58' 54,285" E Lokasi : Desa Tandasura  
 Arah Lintasan : N 93° E Elevasi : 19 mdpl

No	MN/2 (m)	AB/2 (m)	K	PEMBACAAN I			PEMBACAAN II			AVERAGE
				$\Delta V$ (mV)	I (mA)	$\rho_{\alpha}$ (Ohm-m)	$\Delta V$ (mV)	I (mA)	$\rho_{\alpha}$ (Ohm-m)	$\rho_{\alpha}$ (Ohm-m)
1	0.5	1.5	6.286	194.6	109.1	11.21	203.0	109.0	11.71	11.46
2	0.5	2.5	18.857	52.6	109.1	9.09	50.9	109.1	8.80	8.94
3	0.5	4	49.500	24.7	109.0	11.22	27.2	109.1	12.34	11.78
4	0.5	6	112.357	10.2	108.9	10.52	13.8	109.2	14.20	12.36
5	0.5	8	200.357	6.4	109.2	11.74	6.6	109.2	12.11	11.93
6	2.5	8	36.300	43.9	109.2	14.59	45.7	109.2	15.19	14.89
7	2.5	10	58.929	28.0	109.2	15.11	29.2	109.2	15.76	15.43
8	2.5	15	137.500	10.0	109.2	12.59	10.2	109.2	12.84	12.72
9	2.5	20	247.500	4.3	108.8	9.78	1.1	109.3	2.49	6.14
10	2.5	30	561.786	0.8	109.3	4.11	1.1	109.3	5.65	4.88
11	10	30	125.714	9.3	109.3	10.70	10.0	109.3	11.50	11.10
12	10	40	235.714	4.9	109.3	10.57	4.8	109.3	10.35	10.46
13	10	50	377.143	2.7	109.3	9.32	3.0	109.3	10.35	9.83
14	10	60	550.000	0.6	109.4	3.02	0.9	109.4	4.52	3.77
15	10	75	868.214	0.5	109.4	3.97	0.6	109.4	4.76	4.36
16	25	75	314.286	2.5	109.2	7.20	2.1	109.4	6.03	6.61
17	25	100	589.286	0.8	109.2	4.32	1.1	109.4	5.93	5.12
18	25	150	1375.000	4.0	109.0	50.46	3.8	109.1	47.89	49.18



## DATA HASIL PENGUKURAN LAPANGAN GL-11

Koordinat : 3° 27' 24,068" S Tanggal : 8 Januari 2024  
 : 118° 58' 55,299" E Lokasi : Desa Tandasura  
 Arah Lintasan : N 78° E Elevasi : 16 mdpl

No	MN/2 (m)	AB/2 (m)	K	PEMBACAAN I			PEMBACAAN II			AVERAGE
				$\Delta V$ (mV)	I (mA)	$\rho_{\alpha}$ (Ohm-m)	$\Delta V$ (mV)	I (mA)	$\rho_{\alpha}$ (Ohm-m)	$\rho_{\alpha}$ (Ohm-m)
1	0.5	1.5	6.286	388.2	109.4	22.31	380.6	109.4	21.87	22.09
2	0.5	2.5	18.857	142.2	109.4	24.51	143.5	109.5	24.71	24.61
3	0.5	4	49.500	61.1	109.5	27.62	61.3	109.5	27.71	27.67
4	0.5	6	112.357	26.3	109.4	27.01	27.3	109.4	28.04	27.52
5	0.5	8	200.357	12.0	109.5	21.96	13.3	109.5	24.34	23.15
6	2.5	8	36.300	80.4	109.5	26.65	80.5	109.6	26.66	26.66
7	2.5	10	58.929	41.4	109.6	22.26	42.5	109.6	22.85	22.56
8	2.5	15	137.500	12.3	109.7	15.42	12.6	109.7	15.79	15.61
9	2.5	20	247.500	3.9	109.5	8.82	4.9	109.3	11.10	9.96
10	2.5	30	561.786	1.1	109.8	5.63	1.1	109.7	5.63	5.63
11	10	30	125.714	10.4	109.8	11.91	10.5	109.8	12.02	11.96
12	10	40	235.714	4.5	109.9	9.65	5.3	109.8	11.38	10.51
13	10	50	377.143	2.7	109.8	9.27	3.1	109.8	10.65	9.96
14	10	60	550.000	1.0	109.8	5.01	1.3	109.8	6.51	5.76
15	10	75	868.214	0.5	109.8	3.95	0.7	109.8	5.54	4.74
16	25	75	314.286	3.7	109.5	10.62	3.2	109.8	9.16	9.89
17	25	100	589.286	0.2	109.9	1.07	0.6	109.8	3.22	2.15
18	25	150	1375.000	0.2	109.2	2.52	0.2	109.9	2.50	2.51





## DATA HASIL PENGUKURAN LAPANGAN GL-12

Koordinat : 3° 19' 29,798" S Tanggal : 9 Januari 2024  
                   : 119° 6' 22,525" E Lokasi : Desa Batupanga Daala  
 Arah Lintasan : N 93° E Elevasi : 85 mdpl

No	MN/2 (m)	AB/2 (m)	K	PEMBACAAN I			PEMBACAAN II			AVERAGE
				$\Delta V$ (mV)	I (mA)	$\rho_{\alpha}$ (Ohm-m)	$\Delta V$ (mV)	I (mA)	$\rho_{\alpha}$ (Ohm-m)	$\rho_{\alpha}$ (Ohm-m)
1	0.5	1.5	6.286	262.2	109.1	15.11	261.7	109.0	15.09	15.10
2	0.5	2.5	18.857	61.2	109.1	10.58	63.3	109.1	10.94	10.76
3	0.5	4	49.500	19.6	109.0	8.90	20.2	109.1	9.16	9.03
4	0.5	6	112.357	6.7	109.2	6.89	7.8	109.2	8.03	7.46
5	0.5	8	200.357	3.5	109.2	6.42	3.9	109.2	7.16	6.79
6	2.5	8	36.300	23.9	109.3	7.94	25.4	109.2	8.44	8.19
7	2.5	10	58.929	14.5	109.3	7.82	14.9	109.3	8.03	7.93
8	2.5	15	137.500	5.7	109.4	7.16	5.7	109.3	7.17	7.17
9	2.5	20	247.500	8.5	109.4	19.23	10.1	109.4	22.85	21.04
10	2.5	30	561.786	0.5	109.4	2.57	0.7	109.5	3.59	3.08
11	10	30	125.714	3.3	109.5	3.79	4.9	109.5	5.63	4.71
12	10	40	235.714	2.6	109.5	5.60	2.8	109.4	6.03	5.81
13	10	50	377.143	1.4	109.5	4.82	1.5	109.5	5.17	4.99
14	10	60	550.000	0.8	109.5	4.02	0.8	109.6	4.01	4.02
15	10	75	868.214	0.4	109.5	3.17	0.5	109.5	3.96	3.57
16	25	75	314.286	1.6	109.5	4.59	1.1	109.5	3.16	3.87
17	25	100	589.286	0.6	109.6	3.23	0.7	109.5	3.77	3.50
18	25	150	1375.000	0.6	109.4	7.54	0.5	109.7	6.27	6.90



### DATA HASIL PENGUKURAN LAPANGAN GL-13

Koordinat : 3° 19' 21,050" S Tanggal : 9 Januari 2024  
                   : 119° 6' 41,602" E Lokasi : Desa Batupanga Daala  
 Arah Lintasan : N 88° E Elevasi : 52 mdpl

No	MN/2 (m)	AB/2 (m)	K	PEMBACAAN I			PEMBACAAN II			AVERAGE
				$\Delta V$ (mV)	I (mA)	$\rho_{\alpha}$ (Ohm-m)	$\Delta V$ (mV)	I (mA)	$\rho_{\alpha}$ (Ohm-m)	$\rho_{\alpha}$ (Ohm-m)
1	0.5	1.5	6.286	343.8	109.5	19.74	343.9	109.5	19.74	19.74
2	0.5	2.5	18.857	99.2	109.6	17.07	99.2	109.6	17.07	17.07
3	0.5	4	49.500	121.4	109.7	54.78	115.1	109.7	51.94	53.36
4	0.5	6	112.357	14.5	109.7	14.85	13.7	109.8	14.02	14.44
5	0.5	8	200.357	7.6	109.8	13.87	7.9	110.0	14.39	14.13
6	2.5	8	36.300	48.9	110.1	16.12	49.6	110.0	16.37	16.25
7	2.5	10	58.929	29.0	110.1	15.52	29.7	110.2	15.88	15.70
8	2.5	15	137.500	11.9	110.1	14.86	13.0	110.1	16.24	15.55
9	2.5	20	247.500	6.9	110.1	15.51	7.4	110.1	16.63	16.07
10	2.5	30	561.786	3.4	110.1	17.35	3.3	110.1	16.84	17.09
11	10	30	125.714	20.0	110.0	22.86	19.0	110.0	21.71	22.29
12	10	40	235.714	9.7	109.9	20.80	10.1	110.0	21.64	21.22
13	10	50	377.143	5.3	110.0	18.17	5.9	110.1	20.21	19.19
14	10	60	550.000	2.3	110.2	11.48	3.9	110.1	19.48	15.48
15	10	75	868.214	1.4	110.2	11.03	1.6	110.1	12.62	11.82
16	25	75	314.286	5.1	110.2	14.54	4.9	110.2	13.97	14.26
17	25	100	589.286	3.1	110.2	16.58	3.0	110.2	16.04	16.31
18	25	150	1375.000	0.9	110.2	11.23	0.8	110.2	9.98	10.61



## DATA HASIL PENGUKURAN LAPANGAN GL-14

Koordinat : 3° 19' 55,956" S Tanggal : 22 Maret 2023  
                   : 119° 8' 42,284" E Lokasi : Desa Beroangin  
 Arah Lintasan : N 118° E Elevasi : 28 mdpl

No	MN/2 (m)	AB/2 (m)	K	PEMBACAAN I			PEMBACAAN II			AVERAGE
				$\Delta V$ (mV)	I (mA)	$\rho_{\alpha}$ (Ohm-m)	$\Delta V$ (mV)	I (mA)	$\rho_{\alpha}$ (Ohm-m)	$\rho_{\alpha}$ (Ohm-m)
1	0.5	1.5	6.286	661.0	103.2	40.26	663.0	103.1	40.42	40.34
2	0.5	2.5	18.857	118.7	107.1	20.90	116.4	199.8	10.99	14.45
3	0.5	4	49.500	31.1	102.3	15.05	30.4	102.9	14.62	14.84
4	0.5	6	112.357	10.7	102.3	11.75	11.7	102.9	12.78	12.27
5	0.5	8	200.357	5.8	102.5	11.34	6.5	102.8	12.67	12.00
6	2.5	8	36.300	45.5	102.5	16.11	42.2	102.3	14.97	15.54
7	2.5	10	58.929	26.4	102.9	15.12	28.4	103.3	16.20	15.66
8	2.5	15	137.500	11.4	103.2	15.19	12.2	103.7	16.18	15.68
9	2.5	20	247.500	5.8	103.0	13.94	5.8	102.9	13.95	13.94
10	2.5	30	561.786	2.0	103.3	10.88	2.4	103.3	13.05	11.96
11	10	30	125.714	14.7	103.4	17.87	15.6	103.9	18.88	18.37
12	10	40	235.714	6.8	103.8	15.44	7.7	103.7	17.50	16.47
13	10	50	377.143	4.8	104.0	17.41	4.7	103.0	17.21	17.31
14	10	60	550.000	1.6	103.4	8.51	1.9	102.9	10.16	9.33
15	10	75	868.214	0.6	102.1	5.10	0.6	102.2	5.10	5.10
16	25	75	314.286	6.7	102.6	20.52	6.4	102.8	19.57	20.04
17	25	100	589.286	2.2	102.0	12.71	3.4	107.6	18.62	15.74
18	25	150	1375.000	0.8	103.6	10.62	1.4	103.4	18.62	14.61



## DATA HASIL PENGUKURAN LAPANGAN GL-15

Koordinat : 3° 19' 49,768" S Tanggal : 9 Januari 2024  
 : 119° 8' 39,714" E Lokasi : Desa Beroangin  
 Arah Lintasan : N 337° E Elevasi : 32 mdpl

No	MN/2 (m)	AB/2 (m)	K	PEMBACAAN I			PEMBACAAN II			AVERAGE
				$\Delta V$ (mV)	I (mA)	$\rho_{\alpha}$ (Ohm-m)	$\Delta V$ (mV)	I (mA)	$\rho_{\alpha}$ (Ohm-m)	$\rho_{\alpha}$ (Ohm-m)
1	0.5	1.5	6.286	361.9	110.0	20.68	357.6	110.0	20.44	20.56
2	0.5	2.5	18.857	197.8	109.8	33.97	193.3	109.8	33.20	33.58
3	0.5	4	49.500	46.2	109.6	20.87	43.4	109.8	19.57	20.22
4	0.5	6	112.357	15.1	109.7	15.47	14.5	109.7	14.85	15.16
5	0.5	8	200.357	6.5	109.9	11.85	7.8	109.9	14.22	13.04
6	2.5	8	36.300	42.5	109.9	14.04	43.3	109.9	14.30	14.17
7	2.5	10	58.929	26.4	109.8	14.17	26.3	109.8	14.12	14.14
8	2.5	15	137.500	11.9	109.6	14.93	12.1	109.8	15.15	15.04
9	2.5	20	247.500	6.3	109.5	14.24	6.9	109.7	15.57	14.90
10	2.5	30	561.786	2.6	109.7	13.31	3.0	109.7	15.36	14.34
11	10	30	125.714	15.5	109.3	17.83	15.7	109.7	17.99	17.91
12	10	40	235.714	7.7	109.6	16.56	7.6	109.6	16.35	16.45
13	10	50	377.143	3.0	109.2	10.36	4.4	109.2	15.20	12.78
14	10	60	550.000	2.9	108.9	14.65	2.7	109.4	13.57	14.11
15	10	75	868.214	4.7	109.5	37.27	4.1	109.5	32.51	34.89
16	25	75	314.286	4.5	109.5	12.92	4.6	109.5	13.20	13.06
17	25	100	589.286	2.7	109.2	14.57	3.0	109.2	16.19	15.38
18	25	150	1375.000	1.6	109.9	20.02	1.3	109.8	16.28	18.15



## DATA HASIL PENGUKURAN LAPANGAN GL-16

Koordinat : 3° 19' 3,778" S Tanggal : 7 Januari 2024  
 : 119° 11' 14,326" E Lokasi : Desa Tuttula  
 Arah Lintasan : N 53° E Elevasi : 59 mdpl

No	MN/2 (m)	AB/2 (m)	K	PEMBACAAN I			PEMBACAAN II			AVERAGE
				$\Delta V$ (mV)	I (mA)	$\rho_{\alpha}$ (Ohm-m)	$\Delta V$ (mV)	I (mA)	$\rho_{\alpha}$ (Ohm-m)	$\rho_{\alpha}$ (Ohm-m)
1	0.5	1.5	6.286	722.0	109.4	41.49	721.0	109.5	41.39	41.44
2	0.5	2.5	18.857	246.0	109.4	42.40	254.0	109.4	43.78	43.09
3	0.5	4	49.500	92.8	109.3	42.03	95.7	109.3	43.34	42.68
4	0.5	6	112.357	42.5	109.2	43.73	42.7	109.2	43.93	43.83
5	0.5	8	200.357	23.8	109.0	43.75	25.6	109.2	46.97	45.36
6	2.5	8	36.300	169.1	109.1	56.26	161.6	109.2	53.72	54.99
7	2.5	10	58.929	92.8	108.7	50.31	95.1	108.6	51.60	50.96
8	2.5	15	137.500	43.9	109.0	55.38	0.4	109.0	0.50	27.94
9	2.5	20	247.500	21.2	108.3	48.45	21.1	108.3	48.22	48.33
10	2.5	30	561.786	6.9	109.2	35.50	7.3	109.2	37.56	36.53
11	10	30	125.714	44.3	109.2	51.00	44.9	108.9	51.83	51.42
12	10	40	235.714	22.3	109.2	48.14	23.0	109.2	49.65	48.89
13	10	50	377.143	10.8	109.2	37.30	11.6	109.2	40.06	38.68
14	10	60	550.000	5.1	108.2	25.92	6.1	108.2	31.01	28.47
15	10	75	868.214	2.7	109.3	21.45	3.7	109.3	29.39	25.42
16	25	75	314.286	15.9	109.3	45.72	14.3	109.3	41.12	43.42
17	25	100	589.286	7.0	109.1	37.81	6.7	109.2	36.16	36.98
18	25	150	1375.000	2.9	109.3	36.48	3.3	109.0	41.63	39.06



## DATA HASIL PENGUKURAN LAPANGAN GL-17

Koordinat : 3° 18' 53,766" S Tanggal : 22 Maret 2023  
 : 119° 11' 15,205" E Lokasi : Desa Tuttula  
 Arah Lintasan : N 74° E Elevasi : 90 mdpl

No	MN/2 (m)	AB/2 (m)	K	PEMBACAAN I			PEMBACAAN II			AVERAGE
				$\Delta V$ (mV)	I (mA)	$\rho_{\alpha}$ (Ohm-m)	$\Delta V$ (mV)	I (mA)	$\rho_{\alpha}$ (Ohm-m)	$\rho_{\alpha}$ (Ohm-m)
1	0.5	1.5	6.286	401.6	108.6	23.25	402.3	108.6	23.29	23.27
2	0.5	2.5	18.857	276.2	108.3	48.09	273.7	108.2	47.70	47.90
3	0.5	4	49.500	48.7	108.1	22.30	49.6	108.2	22.69	22.50
4	0.5	6	112.357	18	109.1	18.54	18.2	109	18.76	18.65
5	0.5	8	200.357	8	108.7	14.75	9.2	108.5	16.99	15.87
6	2.5	8	36.300	60.1	108.7	20.07	60.1	108.7	20.07	20.07
7	2.5	10	58.929	30.6	109.2	16.51	30.2	109.2	16.30	16.41
8	2.5	15	137.500	8.4	108.3	10.66	8.8	107.6	11.25	10.96
9	2.5	20	247.500	1.8	107.1	4.16	1.7	106.9	3.94	4.05
10	2.5	30	561.786	0.8	108	4.16	0.5	180	1.56	2.86
11	10	30	125.714	3.9	108	4.54	5.1	107.8	5.95	5.24
12	10	40	235.714	0.5	106.9	1.10	0.9	106.9	1.98	1.54
13	10	50	377.143	0.3	108.8	1.04	0.8	108.8	2.77	1.91
14	10	60	550.000	0.1	102	0.54	0.3	102	1.62	1.08
15	10	75	868.214	0.5	109.1	3.98	0.2	109.1	1.59	2.79
16	25	75	314.286	3.3	109.1	9.51	2.1	109.2	6.04	7.78
17	25	100	589.286	0.5	109.1	2.70	1	109.2	5.40	4.05
18	25	150	1375.000	0.3	109.1	3.78	0.3	109.2	3.78	3.78



## DATA HASIL PENGUKURAN LAPANGAN GL-18

Koordinat : 3° 18' 44,564" S Tanggal : 9 Januari 2024  
                   : 119° 16' 15,744" E Lokasi : Desa Riso  
 Arah Lintasan : N 190° E Elevasi : 87 mdpl

No	MN/2 (m)	AB/2 (m)	K	PEMBACAAN I			PEMBACAAN II			AVERAGE
				$\Delta V$ (mV)	I (mA)	$\rho_{\alpha}$ (Ohm-m)	$\Delta V$ (mV)	I (mA)	$\rho_{\alpha}$ (Ohm-m)	$\rho_{\alpha}$ (Ohm-m)
1	0.5	1.5	6.286	367.5	109.8	21.04	367.4	109.8	21.03	21.04
2	0.5	2.5	18.857	140.4	109.7	24.13	141.4	109.8	24.28	24.21
3	0.5	4	49.500	58.7	109.7	26.49	58.6	109.7	26.44	26.46
4	0.5	6	112.357	28.4	109.7	29.09	30.2	109.8	30.90	30.00
5	0.5	8	200.357	15.9	109.4	29.12	17.0	109.6	31.08	30.10
6	2.5	8	36.300	87.4	109.7	28.92	88.4	109.7	29.25	29.09
7	2.5	10	58.929	60.4	109.6	32.48	60.6	109.7	32.55	32.51
8	2.5	15	137.500	33.0	109.7	41.36	33.7	109.7	42.24	41.80
9	2.5	20	247.500	22.6	109.6	51.04	22.0	109.6	49.68	50.36
10	2.5	30	561.786	11.7	109.6	59.97	11.6	109.7	59.40	59.69
11	10	30	125.714	59.5	109.6	68.25	59.4	109.7	68.07	68.16
12	10	40	235.714	41.1	109.7	88.31	41.0	109.3	88.42	88.37
13	10	50	377.143	28.9	109.5	99.54	30.5	109.6	104.95	102.25
14	10	60	550.000	19.7	109.4	99.04	21.5	109.5	107.99	103.52
15	10	75	868.214	11.7	109.0	93.19	13.1	108.3	105.02	99.11
16	25	75	314.286	35.7	109.0	102.94	33.9	109.0	97.75	100.34
17	25	100	589.286	24.9	108.8	134.86	25.5	108.9	137.99	136.43
18	25	150	1375.000	11.0	108.9	138.89	10.7	109.0	134.98	136.93



## Lampiran 4 Dokumentasi lapangan



Gambar 72 Dokumentasi pengukuran pada titik GL-05



Gambar 73 Dokumentasi pengukuran pada titik GL-07







Gambar 74 Dokumentasi pengukuran pada titik GL-09



Gambar 75 Dokumentasi pengukuran pada titik GL-10





Gambar 76 Dokumentasi pengukuran pada titik GL-11



Gambar 77 Dokumentasi pengukuran pada titik GL-12





Gambar 78 Dokumentasi pengukuran pada titik GL-13



Gambar 79 Dokumentasi pengukuran pada titik GL-14





Gambar 80 Dokumentasi pengukuran pada titik GL-15



Gambar 81 Dokumentasi pengukuran pada titik GL-17





Gambar 82 Dokumentasi pengukuran pada titik GL-18










Lampiran 5 Lembar Asistensi


Lampiran B 10  
Kartu Konsultasi Tugas Akhir

**JUDUL:** ANALISIS HIDROGEOLOGI BERDASARKAN NILAI RESISTIVITAS MENGGUNAKAN METODA GEOLITRIK DI KABUPATEN POLEWALI MAMUDAR, SULAWESI BARAT

(Konsultasi minimal 8 kali)

TANGGAL	MATERI KONSULTASI	PARAF DOSEN
18 MEI 2024	- Perbaiki Latar belakang - Tambahkan penampang realisasi - Perbaiki penulisan sumber	
20 MEI 2024	- Perbaiki abstrak - Tambahkan diagram pagar	
3 JUNI 2024	- Populer daftar-daftar - perbaiki letak tabel	
19 JUNI 2024	- Perbaiki penulisan kejurusan - perbaiki penulisan istilah asing	
21 JUNI 2024	- Perbaiki diagram pagar	
28 JUNI 2024	- Perbaiki gambar litologi di bab 4	
10 JULI 2024	- Perbaiki peta - perbaiki bagan alir penelitian - perbaiki kesimpulan	



TANGGAL	MATERI KONSULTASI	PARAF DOSEN
19 Juli 2024	- Perbaiki tampilan poster	
9 Agustus 2024	- Tambahkan nilai resistivitas pada persamaan melambung di artikel ilmiah	