

DAFTAR PUSTAKA

- Aradhana, R. (2023). *Efektivitas Penerapan Non Convention Vessel Standard (NCVS) berdasarkan Peraturan Menteri Perhubungan KM.65/2009 tentang Standar Kapal Non Konvensi Berbendera Indonesia*. 1(4), 11–22. <https://doi.org/10.51903/jaksa.v1i4.1395>
- Hadi, N. (2017). Studi Analisis Waktu Evakuasi Pada Kapal Penumpang Ferry Ro-ro 5000 GT Jalur Pelayaran Merak – Bakauheni. *Jurnal Penelitian Engineering*, 21(1), 1–10. <https://doi.org/10.25042/jpe.052017.01>
- Hendrawan, A. (2019). Analisa Indikator Keselamatan Pelayaran Pada Kapal Niaga. *Jurnal Saintara*, 3(2), 53–59.
- International Maritime Organization. (1999). *Interim Guidelines for a Simplified Evacuation Analysis on Ro-Ro Passenger Ships*. MSC/Circ.909.
- International Maritime Organization. (1996). *International Life-Saving Appliance (LSA)*. London
- International Maritime Organization. (2010). *Resolution MSC.307(88): International Code for Application of Fire Test Procedures*. London.
- International Maritime Organization. (1980). *Resolution A.437(XI): Training of Crews in Fire-Fighting*. London.
- International Maritime Organization. (2018). *Safety of Life at Sea (SOLAS)*. London
- Kementerian Perhubungan Republik Indonesia. (2013). Peraturan Menteri Perhubungan Republik Indonesia Nomor PM 07 Tahun 2022 tentang Kewajiban Klasifikasi Bagi Kapal Berbendera Indonesia pada Badan Klasifikasi. Jakarta: Kementerian Perhubungan Republik Indonesia.
- Kementerian Perhubungan Republik Indonesia. (2021). Peraturan Menteri Perhubungan Republik Indonesia Nomor PM 54 Tahun 2021 tentang Pengesahan Gambar Rancang Bangun Kapal, Pelaksanaan dan Pengawasan Pembangunan dan Pengerjaan Kapal. Jakarta: Kementerian Perhubungan Republik Indonesia.



(2023). *Waspadai Cuaca Ekstrem untuk Menjamin Keselamatan Pelayaran*. Kementerian Perhubungan Republik Indonesia. <https://dephub.go.id/post/read/waspadai-cuaca-ekstrem-untuk-menjamin->

keselamatan-pelayaran

- Maharani, C. A., Riantini, R., & Khairansyah, M. D. (2016). Perancangan Safety and Fire Control Plan Pada Kapal Feri Ro-Ro X. *Jurnal Teknologi Maritim*, 2581, 281–286.
- Muhammad, A. H., Paroka, D., Sutomo, R., & Daud, N. (2012). *Studi jalur evakuasi pada kapal penyeberangan antar pulau*. 2, 1–8.
- Peraturan Menteri Perhubungan. (2009). Standar Kapal Non Konvensi (Non Convention Vessel Standard) Berbendera Indonesia. Jakarta
- Pathfinder Thunderhead Engineering. (2019). *Pathfinder*. Retrieved from Thunderheadeng: <https://www.thunderheadeng.com/pathfinder>
- Prasetyo, A. T., & Prayitno, M. M. E. (2016). *Perencanaan General Service System Kapal Perintis 1200 GT (Studi Kasus KM . Sabuk Nusantara)*. 3–8.
- Presiden Republik Indonesia. (2008). Undang Undang Republik Indonesia Nomor 17 tentang Pelayaran. Jakarta
- Siswanto, H. W. (2018). Pendidikan Budaya Bahari Memperkuat Jati Diri Bangsa. *Jurnal Pendidikan Ilmu Sosial*, 27(2), 204. <https://doi.org/10.17509/jpis.v27i2.14096>
- Suryani, D., Yudi Pratiwi, A., & Andi, H. (2018). Peran Syahbandar Dalam Keselamatan Pelayaran. *Jurnal Sainara*, 2(2), 2–2.
- Utomo, H. (2017). *Siapa yang Bertanggung Jawab Menurut Hukum*. 57–76.
- Wijaya, R. T. (2016). *Analisa Evakuasi Penumpang dan ABK Kapal PT. Pelni dalam Kondisi List dan Kebakaran*. Institut Teknologi Sepuluh Nopember.



L

A

M

P

I

R

A

N



Lampiran 1 Jaringan trayek dan jarak mil

No	Provinsi/ Pangkalan	Kode Trayek	Jaringan Trayek dan Jarak Mil	Jumlah Jarak	Pelayaran 1 Round Voyage	Target Frekuensi
76		R-77	Ambon -50- Manipa/Aman Jaya -25- Kelang - 22 - Waesala - 9 - Buano -38 - Taniwel - 63 - Wahai - 23,5 - Kobisadar - 76 - Waegama - 110 - Sorong- 110 - Waegama - 76 - Kobisadar - 23,5 - Wahai - 63 - Taniwel - 38 -Buano - 9 - Waesala - 22 - Kelang - 25 - Manipa/ Aman Jaya - 70 - Piru - 75- Ambon	928	13	25
77		R-50	Ambon-81- Amahai -51- Tehoru -30-Werinama/Bemo -67- Banda -111-Serua -45- Nila -20- Teon -20- Nila -45- Serua -111- Banda -67- Werinama/Bemo - 26- Tehoru -51- Amahai -81- Ambon	806	10	24
78	Tual	R-78	Tual - 29 - P. Toyando - 16 - P. Tam - 14 - P. Fadol - 6 - P. Mangur - 17 - P. Kur -8- P. Kaimer - 33 - P. Teor - 17 - P. Kesui -36 - Gorom - 33 - Geser - 66 - Bula - 109 -Fak Fak - 109 - Bula - 66 - Geser - 33 - Gorom - 36 - P. Kesui - 17 - P. Teor - 33 - P. Kaitner - 8 - P. Kur - 17 - P. Mangur - 6 -P.Fadol - 14 - P. Tam - 16 - P. Toyando-29 – Tual	768	13	28
79		R-79	Tual - 26 - Elat - 15 - Mun - 26 - Banda Eli - 6 - Holat - 126 - Kaimana -170 - Fak-Fak - 170 - Kaimana - 110 - Banda Eli - 26 - Mun - 15 - Elat - 26 -Tual - 29 - P. Toyando - 16 - P. Tam - 14 - P. Mangur - 17 - P. Kur - 8 -P. Kaimer - 58 - Tual	858	12	30
80		R-80	Tual - 108 - Dobo - 39 - Mariasi - 66 - Kojabi - 60 - Warabal -40- Longar - 19 - Meror - 14 - Batu Goyang - 46 - Serwatu - 22 - Taberfane -24- Benjina - 20 - Dobo - 108 - Tual	566	9	40
81		R-81	Tual -105- Molu -10 – Nurkat -28- Larat -88- Seira -38- Adaut -16- Saumlaki -56- Tutukembong -53- Larat -21- Sofyanin/Rumen -112- Tual	527	8	45
82		R-82	Tual -212- Dawera/Dawelor-22-Marsela-20-Kroing-31-Tepa-100-Moa-60-Romang-35-Kisar-35-Romang-60-Moa-100-Tepa-31-Kroing-20-Marsela-22-Dawera/Dawelor-212-Tual	960	11	33
		R-83	Tual-108-Dobo-175-Larat-118-Saumlaki-87-Marsela-20-Kroing-13-Dawera/Dawelor-13-Kroing-20-Marsela-87-Saumlaki-118-Larat-175-Dobo-108-Tual	1042	11	33



Lampiran 2 Tabel id penumpang untuk skenario A-C

No.	ID penumpang			
1	1A	(Females 30y - 50y)	45	45A (Males 30y - 50y)
2	2A	(Males < 30y)	46	46A (Males 30y - 50y)
3	3A	(Females 30y - 50y)	47	1B (Females 30y - 50y)
4	4A	(Males < 30y)	48	2B (Females 30y - 50y)
5	5A	(Females 30y - 50y)	49	3B (Females > 50y)
6	6A	(Females 30y - 50y)	50	4B (Males < 30y)
7	7A	(Females 30y - 50y)	51	5B (Females 30y - 50y)
8	8A	(Males < 30y)	52	6B (Males 30y - 50y)
9	9A	(Females 30y - 50y)	53	7B (Females 30y - 50y)
10	10A	(Females 30y - 50y)	54	8B (Males 30y - 50y)
11	11A	(Males > 50y)	55	9B (Females 30y - 50y)
12	12A	(Males 30y - 50y)	56	10B (Females 30y - 50y)
13	13A	(Females 30y - 50y)	57	11B (Females 30y - 50y)
14	14A	(Females 30y - 50y)	58	12B (Females > 50y)
15	15A	(Males < 30y)	59	13B (Males < 30y)
16	16A	(Females < 30y)	60	14B (Males < 30y)
17	17A	(Females > 50y)	61	15B (Females 30y - 50y)
18	18A	(Females 30y - 50y)	62	16B (Females 30y - 50y)
19	19A	(Males 30y - 50y)	63	17B (Males < 30y)
20	20A	(Males 30y - 50y)	64	18B (Females < 30y)
21	21A	(Females 30y - 50y)	65	19B (Females < 30y)
22	22A	(Males < 30y)	66	20B (Females 30y - 50y)
23	23A	(Females 30y - 50y)	67	21B (Males 30y - 50y)
24	24A	(Males 30y - 50y)	68	22B (Males > 50y)
25	25A	(Males 30y - 50y)	69	23B (Females 30y - 50y)
26	26A	(Females < 30y)	70	24B (Females < 30y)
27	27A	(Males 30y - 50y)	71	25B (Females > 50y)
28	28A	(Males < 30y)	72	26B (Females > 50y)
29	29A	(Males 30y - 50y)	73	27B (Males < 30y)
30	30A	(Males 30y - 50y)	74	28B (Females < 30y)
31	31A	(Females > 50y)	75	29B (Males 30y - 50y)
32	32A	(Females > 50y)	76	30B (Males < 30y)
33	33A	(Females < 30y)	77	31B (Males > 50y)
34	34A	(Females < 30y)	78	32B (Females 30y - 50y)
35	35A	(Females > 50y)	79	33B (Males 30y - 50y)
36	36A	(Females 30y - 50y)	80	34B (Males > 50y)
37	37A	(Males > 50y)	81	35B (Males 30y - 50y)
38	38A	(Males 30y - 50y)	82	36B (Males > 50y)
39	39A	(Females 30y - 50y)	83	37B (Males 30y - 50y)
	40A	(Females 30y - 50y)	84	38B (Females < 30y)
	41A	(Males > 50y)	85	39B (Males 30y - 50y)
	42A	(Males > 50y)	86	40B (Males < 30y)
	43A	(Males > 50y)	87	41B (Males < 30y)
	44A	(Males 30y - 50y)	88	42B (Females < 30y)
			89	43B (Females 30y - 50y)



90	44B	<i>(Males < 30y)</i>	111	21C	<i>(Males < 30y)</i>
91	1C	<i>(Males < 30y)</i>	112	22C	<i>(Females < 30y)</i>
92	2C	<i>(Males 30y - 50y)</i>	113	23C	<i>(Males 30y - 50y)</i>
93	3C	<i>(Males 30y - 50y)</i>	114	24C	<i>(Males 30y - 50y)</i>
94	4C	<i>(Males 30y - 50y)</i>	115	25C	<i>(Males > 50y)</i>
95	5C	<i>(Males 30y - 50y)</i>	116	26C	<i>(Females 30y - 50y)</i>
96	6C	<i>(Females < 30y)</i>	117	27C	<i>(Females > 50y)</i>
97	7C	<i>(Females < 30y)</i>	118	28C	<i>(Females < 30y)</i>
98	8C	<i>(Females < 30y)</i>	119	29C	<i>(Males > 50y)</i>
99	9C	<i>(Males 30y - 50y)</i>	120	30C	<i>(Males 30y - 50y)</i>
100	10C	<i>(Males < 30y)</i>	121	31C	<i>(Females > 50y)</i>
101	11C	<i>(Females < 30y)</i>	122	32C	<i>(Males 30y - 50y)</i>
102	12C	<i>(Males < 30y)</i>	123	33C	<i>(Females 30y - 50y)</i>
103	13C	<i>(Males > 50y)</i>	124	34C	<i>(Males < 30y)</i>
104	14C	<i>(Females < 30y)</i>	125	35C	<i>(Males 30y - 50y)</i>
105	15C	<i>(Males > 50y)</i>	126	36C	<i>(Females > 50y)</i>
106	16C	<i>(Males 30y - 50y)</i>	127	37C	<i>(Females < 30y)</i>
107	17C	<i>(Females > 50y)</i>	128	38C	<i>(Females < 30y)</i>
108	18C	<i>(Females 30y - 50y)</i>	129	39C	<i>(Males 30y - 50y)</i>
109	19C	<i>(Females > 50y)</i>	130	40C	<i>(Females 30y - 50y)</i>
110	20C	<i>(Males 30y - 50y)</i>			



Lampiran 3 Tabel hasil simulasi evakuasi skenario A dengan bantuan *Pathfinder* 2023

NO.	KODE	WAKTU	JARAK
1	31A (Females > 50y)	54,450	15,890
2	32A (Females > 50y)	26,675	13,939
3	33A (Females < 30y)	30,800	15,625
4	34A (Females < 30y)	17,075	12,116
5	41A (Males > 50y)	45,100	17,304
6	42A (Males > 50y)	27,675	17,358
7	43A (Males > 50y)	23,425	16,266
8	44A (Males 30y - 50y)	20,500	13,595
9	45A (Males 30y - 50y)	32,425	15,729
10	46A (Males 30y - 50y)	61,825	23,161
11	9B (Females 30y - 50y)	71,775	19,758
12	10B (Females 30y - 50y)	11,050	24,821
13	11B (Females 30y - 50y)	182,625	57,963
14	12B (Females > 50y)	102,725	24,256
15	23B (Females 30y - 50y)	106,225	22,277
16	24B (Females < 30y)	84,400	24,497
17	25B (Females > 50y)	122,100	23,233
18	26B (Females > 50y)	73,575	23,101
19	27B (Males < 30y)	85,500	27,059
20	28B (Females < 30y)	96,250	19,003
21	29B (Males 30y - 50y)	97,500	19,846
22	30B (Males < 30y)	87,050	18,629
23	31B (Males > 50y)	29,450	15,004
24	40B (Males < 30y)	55,175	19,073
25	41B (Males < 30y)	21,700	14,633
26	42B (Females < 30y)	76,350	18,180
27	43B (Females 30y - 50y)	42,975	15,521
28	44B (Males < 30y)	60,325	19,205
29	15C (Males > 50y)	67,250	22,928
30	16C (Males 30y - 50y)	88,225	23,598
31	1A (Females 30y - 50y)	123,625	33,134
32	2A (Males < 30y)	152,250	39,338
33	3A (Females 30y - 50y)	128,800	31,891
34	4A (Males < 30y)	153,375	57,668
35	5A (Females 30y - 50y)	147,125	35,343
36	6A (Females 30y - 50y)	125,250	33,502
37	7A (Females 30y - 50y)	132,150	35,175
38	8A (Males < 30y)	173,800	36,046
39	9A (Females 30y - 50y)	187,175	36,310
40	10A (Females 30y - 50y)	129,600	38,065
41	11A (Males > 50y)	153,900	41,242
42	12A (Males 30y - 50y)	165,475	73,840
43	13A (Females 30y - 50y)	104,825	27,005



44	14A (Females 30y - 50y)	177,950	51,849
45	15A (Males < 30y)	54,075	32,748
46	16A (Females < 30y)	41,625	27,995
47	17A (Females > 50y)	80,850	32,663
48	18A (Females 30y - 50y)	151,075	40,780
49	19A (Males 30y - 50y)	191,650	42,558
50	20A (Males 30y - 50y)	77,675	39,209
51	21A (Females 30y - 50y)	128,025	38,909
52	22A (Males < 30y)	160,000	47,595
53	23A (Females 30y - 50y)	114,450	36,447
54	24A (Males 30y - 50y)	146,400	43,058
55	25A (Males 30y - 50y)	191,875	70,434
56	26A (Females < 30y)	187,050	67,342
57	27A (Males 30y - 50y)	64,025	42,712
58	28A (Males < 30y)	137,275	36,924
59	29A (Males 30y - 50y)	48,750	27,737
60	30A (Males 30y - 50y)	41,125	27,832
61	35A (Females > 50y)	179,675	45,433
62	36A (Females 30y - 50y)	171,325	44,608
63	37A (Males > 50y)	149,175	36,779
64	38A (Males 30y - 50y)	115,025	51,645
65	39A (Females 30y - 50y)	158,450	41,361
66	40A (Females 30y - 50y)	185,075	52,493
67	1B (Females 30y - 50y)	110,550	27,559
68	2B (Females 30y - 50y)	81,400	24,155
69	3B (Females > 50y)	92,475	25,386
70	4B (Males < 30y)	74,600	25,850
71	5B (Females 30y - 50y)	175,675	37,457
72	6B (Males 30y - 50y)	142,900	52,522
73	7B (Females 30y - 50y)	138,900	34,029
74	8B (Males 30y - 50y)	69,525	30,463
75	13B (Males < 30y)	58,375	27,723
76	14B (Males < 30y)	20,400	23,787
77	15B (Females 30y - 50y)	100,800	30,502
78	16B (Females 30y - 50y)	75,025	26,888
79	17B (Males < 30y)	97,400	29,472
80	18B (Females < 30y)	134,300	32,106
81	19B (Females < 30y)	111,375	35,598
82	20B (Females 30y - 50y)	131,650	35,133
83	21B (Males 30y - 50y)	172,675	48,392
84	22B (Males > 50y)	189,775	48,380
85	32B (Females 30y - 50y)	137,100	34,452
86	33B (Males 30y - 50y)	140,125	40,999
87	34B (Males > 50y)	98,750	31,712
88	35B (Males 30y - 50y)	155,250	50,242
89	36B (Males > 50y)	104,550	37,198
90	37B (Males 30y - 50y)	134,325	45,234



91	38B (Females < 30y)	148,400	51,877
92	39B (Males 30y - 50y)	82,600	39,724
93	1C (Males < 30y)	107,525	44,993
94	2C (Males 30y - 50y)	196,800	70,137
95	3C (Males 30y - 50y)	162,625	45,711
96	4C (Males 30y - 50y)	83,650	32,865
97	5C (Males 30y - 50y)	188,200	61,097
98	6C (Females < 30y)	120,850	34,806
99	7C (Females < 30y)	136,325	38,675
100	8C (Females < 30y)	49,250	28,599
101	9C (Males 30y - 50y)	51,450	30,038
102	10C (Males < 30y)	39,625	26,833
103	11C (Females < 30y)	129,975	30,504
104	12C (Males < 30y)	46,100	32,952
105	13C (Males > 50y)	195,775	60,791
106	14C (Females < 30y)	154,375	70,358
107	17C (Females > 50y)	152,175	32,631
108	18C (Females 30y - 50y)	59,950	27,647
109	19C (Females > 50y)	71,875	25,889
110	20C (Males 30y - 50y)	36,500	24,708
111	21C (Males < 30y)	100,850	35,324
112	22C (Females < 30y)	56,625	34,466
113	23C (Males 30y - 50y)	85,250	32,231
114	24C (Males 30y - 50y)	70,800	30,465
115	25C (Males > 50y)	82,025	33,001
116	26C (Females 30y - 50y)	91,250	29,991
117	27C (Females > 50y)	31,225	20,696
118	28C (Females < 30y)	49,925	27,985
119	29C (Males > 50y)	44,700	27,340
120	30C (Males 30y - 50y)	57,525	28,195
121	31C (Females > 50y)	126,425	31,648
122	32C (Males 30y - 50y)	101,625	36,186
123	33C (Females 30y - 50y)	147,750	43,024
124	34C (Males < 30y)	141,575	51,250
125	35C (Males 30y - 50y)	123,550	40,588
126	36C (Females > 50y)	169,550	45,859
127	37C (Females < 30y)	99,975	36,359
128	38C (Females < 30y)	113,275	42,943
129	39C (Males 30y - 50y)	92,825	34,732
130	40C (Females 30y - 50y)	79,450	29,054



Lampiran 4 Tabel hasil simulasi evakuasi skenario B dengan bantuan *Pathfinder* 2023

NO.	Kode	Waktu	Jarak
1	31A (Females > 50y)	112,775	35,979
2	32A (Females > 50y)	48,475	32,828
3	33A (Females < 30y)	49,3	39,004
4	34A (Females < 30y)	37,175	30,893
5	41A (Males > 50y)	80	38,185
6	42A (Males > 50y)	63,825	40,943
7	43A (Males > 50y)	40,45	35,829
8	44A (Males 30y - 50y)	39,275	32,411
9	45A (Males 30y - 50y)	50,225	38,346
10	46A (Males 30y - 50y)	73,85	39,282
11	9B (Females 30y - 50y)	125,375	38,149
12	10B (Females 30y - 50y)	234,9	46,700
13	11B (Females 30y - 50y)	282,925	46,734
14	12B (Females > 50y)	279,55	45,000
15	23B (Females 30y - 50y)	253,475	49,666
16	24B (Females < 30y)	229,325	47,754
17	25B (Females > 50y)	275,275	43,726
18	26B (Females > 50y)	204,675	43,279
19	27B (Males < 30y)	147,775	43,192
20	28B (Females < 30y)	147	40,733
21	29B (Males 30y - 50y)	122,2	39,870
22	30B (Males < 30y)	84,5	39,260
23	31B (Males > 50y)	52,275	36,310
24	40B (Males < 30y)	51,35	38,993
25	41B (Males < 30y)	41,175	36,231
26	42B (Females < 30y)	113,55	39,737
27	43B (Females 30y - 50y)	77,05	35,362
28	44B (Males < 30y)	53,225	38,846
29	15C (Males > 50y)	164,825	41,717
30	16C (Males 30y - 50y)	126,025	46,558
31	1A (Females 30y - 50y)	278,725	36,179
32	2A (Males < 30y)	294,475	44,990
33	3A (Females 30y - 50y)	308,5	43,287
34	4A (Males < 30y)	215,7	37,331
35	5A (Females 30y - 50y)	178,45	53,036
36	6A (Females 30y - 50y)	256,65	40,862
37	7A (Females 30y - 50y)	269,9	36,704
38	8A (Males < 30y)	309,35	69,392
39	9A (Females 30y - 50y)	263,8	33,541
40	10A (Females 30y - 50y)	276,8	53,904
41	11A (Males > 50y)	260,725	32,481
42	12A (Males 30y - 50y)	317,825	47,684
43	13A (Females 30y - 50y)	244,875	52,961



44	14A (Females 30y - 50y)	226,275	34,583
45	15A (Males < 30y)	123,1	69,040
46	16A (Females < 30y)	110,2	62,118
47	17A (Females > 50y)	315,075	52,069
48	18A (Females 30y - 50y)	287,525	287,525
49	19A (Males 30y - 50y)	169,1	41,615
50	20A (Males 30y - 50y)	94,725	47,605
51	21A (Females 30y - 50y)	245,9	40,845
52	22A (Males < 30y)	292,925	55,891
53	23A (Females 30y - 50y)	281,15	44,584
54	24A (Males 30y - 50y)	166,675	57,141
55	25A (Males 30y - 50y)	186,35	51,965
56	26A (Females < 30y)	296,5	48,739
57	27A (Males 30y - 50y)	122,8	54,329
58	28A (Males < 30y)	179,4	57,584
59	29A (Males 30y - 50y)	121,35	37,502
60	30A (Males 30y - 50y)	72,675	37,659
61	35A (Females > 50y)	292,025	53,731
62	36A (Females 30y - 50y)	189,675	52,107
63	37A (Males > 50y)	282,85	51,288
64	38A (Males 30y - 50y)	316,3	57,481
65	39A (Females 30y - 50y)	286,475	51,151
66	40A (Females 30y - 50y)	288,875	47,674
67	1B (Females 30y - 50y)	208,875	25,662
68	2B (Females 30y - 50y)	101,975	22,540
69	3B (Females > 50y)	244,05	25,766
70	4B (Males < 30y)	139,425	28,899
71	5B (Females 30y - 50y)	254,75	59,047
72	6B (Males 30y - 50y)	328,05	65,379
73	7B (Females 30y - 50y)	300,175	36,550
74	8B (Males 30y - 50y)	231,2	30,982
75	13B (Males < 30y)	62,125	36,676
76	14B (Males < 30y)	40,5	34,914
77	15B (Females 30y - 50y)	145,5	53,752
78	16B (Females 30y - 50y)	114,575	36,393
79	17B (Males < 30y)	148,425	79,486
80	18B (Females < 30y)	274,45	42,309
81	19B (Females < 30y)	268,325	44,148
82	20B (Females 30y - 50y)	172,1	48,457
83	21B (Males 30y - 50y)	138,15	54,346
84	22B (Males > 50y)	160,65	37,810
85	32B (Females 30y - 50y)	107,375	38,066
86	33B (Males 30y - 50y)	303,55	58,613
87	34B (Males > 50y)	173,3	65,611
88	35B (Males 30y - 50y)	143,875	61,129
89	36B (Males > 50y)	136,325	54,562
90	37B (Males 30y - 50y)	174,625	73,729



91	38B (Females < 30y)	156,575	61,115
92	39B (Males 30y - 50y)	318,8	79,362
93	1C (Males < 30y)	253,8	36,837
94	2C (Males 30y - 50y)	309,7	61,070
95	3C (Males 30y - 50y)	275,625	32,483
96	4C (Males 30y - 50y)	233,175	32,592
97	5C (Males 30y - 50y)	278	75,683
98	6C (Females < 30y)	115,85	48,500
99	7C (Females < 30y)	290,85	64,039
100	8C (Females < 30y)	304,825	52,761
101	9C (Males 30y - 50y)	127,05	67,099
102	10C (Males < 30y)	68,75	34,158
103	11C (Females < 30y)	218,425	34,009
104	12C (Males < 30y)	223,025	35,498
105	13C (Males > 50y)	163,6	25,905
106	14C (Females < 30y)	190,775	31,583
107	17C (Females > 50y)	198,275	34,280
108	18C (Females 30y - 50y)	83,3	53,890
109	19C (Females > 50y)	92,6	32,876
110	20C (Males 30y - 50y)	81,325	55,194
111	21C (Males < 30y)	109,925	49,401
112	22C (Females < 30y)	109,025	61,225
113	23C (Males 30y - 50y)	181,275	51,418
114	24C (Males 30y - 50y)	165,275	50,939
115	25C (Males > 50y)	173,525	49,994
116	26C (Females 30y - 50y)	133,8	44,104
117	27C (Females > 50y)	62,725	46,940
118	28C (Females < 30y)	82,65	55,531
119	29C (Males > 50y)	70,575	37,846
120	30C (Males 30y - 50y)	83,65	37,604
121	31C (Females > 50y)	215	41,701
122	32C (Males 30y - 50y)	161,85	50,379
123	33C (Females 30y - 50y)	142,25	49,004
124	34C (Males < 30y)	224,275	77,147
125	35C (Males 30y - 50y)	301,925	58,159
126	36C (Females > 50y)	230,5	61,695
127	37C (Females < 30y)	126,05	50,697
128	38C (Females < 30y)	146,15	57,497
129	39C (Males 30y - 50y)	193,2	59,596
130	40C (Females 30y - 50y)	203,325	39,021



Lampiran 5 Tabel hasil simulasi evakuasi skenario C dengan bantuan *Pathfinder* 2023

NO.	Kode	Waktu	Jarak
1	31A (Females > 50y)	335,125	48,767
2	32A (Females > 50y)	67,800	35,338
3	33A (Females < 30y)	106,675	39,345
4	34A (Females < 30y)	60,025	33,323
5	41A (Males > 50y)	116,100	38,564
6	42A (Males > 50y)	111,025	42,222
7	43A (Males > 50y)	88,250	43,006
8	44A (Males 30y - 50y)	47,575	33,630
9	45A (Males 30y - 50y)	56,650	37,914
10	46A (Males 30y - 50y)	123,675	57,888
11	9B (Females 30y - 50y)	337,500	46,433
12	10B (Females 30y - 50y)	296,950	48,140
13	11B (Females 30y - 50y)	326,175	54,932
14	12B (Females > 50y)	308,300	47,762
15	23B (Females 30y - 50y)	275,575	43,721
16	24B (Females < 30y)	322,725	57,515
17	25B (Females > 50y)	321,675	46,781
18	26B (Females > 50y)	323,850	47,333
19	27B (Males < 30y)	333,575	73,285
20	28B (Females < 30y)	136,075	44,260
21	29B (Males 30y - 50y)	269,275	43,567
22	30B (Males < 30y)	318,700	48,637
23	31B (Males > 50y)	309,875	56,764
24	40B (Males < 30y)	130,825	50,276
25	41B (Males < 30y)	50,925	35,345
26	42B (Females < 30y)	284,825	42,005
27	43B (Females 30y - 50y)	109,200	35,850
28	44B (Males < 30y)	331,250	73,684
29	15C (Males > 50y)	338,800	54,800
30	16C (Males 30y - 50y)	268,325	41,584
31	1A (Females 30y - 50y)	237,675	38,650
32	2A (Males < 30y)	255,375	41,837
33	3A (Females 30y - 50y)	208,000	38,739
34	4A (Males < 30y)	218,650	45,194
35	5A (Females 30y - 50y)	259,075	37,776
36	6A (Females 30y - 50y)	246,125	35,237
37	7A (Females 30y - 50y)	223,925	39,344
38	8A (Males < 30y)	179,400	35,862
39	9A (Females 30y - 50y)	282,175	35,307
40	10A (Females 30y - 50y)	121,325	31,037
41	11A (Males > 50y)	69,675	31,384
42	12A (Males 30y - 50y)	117,325	34,495
43	13A (Females 30y - 50y)	148,075	31,538



44	14A (Females 30y - 50y)	226,225	37,296
45	15A (Males < 30y)	95,475	34,206
46	16A (Females < 30y)	42,875	27,499
47	17A (Females > 50y)	279,875	40,177
48	18A (Females 30y - 50y)	90,100	28,270
49	19A (Males 30y - 50y)	273,650	36,846
50	20A (Males 30y - 50y)	156,450	34,458
51	21A (Females 30y - 50y)	187,800	32,364
52	22A (Males < 30y)	158,250	33,998
53	23A (Females 30y - 50y)	267,275	37,408
54	24A (Males 30y - 50y)	251,225	38,226
55	25A (Males 30y - 50y)	290,275	40,189
56	26A (Females < 30y)	287,350	45,476
57	27A (Males 30y - 50y)	209,250	35,167
58	28A (Males < 30y)	65,400	33,243
59	29A (Males 30y - 50y)	55,600	26,829
60	30A (Males 30y - 50y)	38,450	24,897
61	35A (Females > 50y)	233,675	36,364
62	36A (Females 30y - 50y)	228,575	36,911
63	37A (Males > 50y)	231,125	35,892
64	38A (Males 30y - 50y)	230,250	39,694
65	39A (Females 30y - 50y)	253,075	46,819
66	40A (Females 30y - 50y)	235,975	36,001
67	1B (Females 30y - 50y)	265,400	38,558
68	2B (Females 30y - 50y)	244,725	37,092
69	3B (Females > 50y)	262,950	35,167
70	4B (Males < 30y)	176,550	35,610
71	5B (Females 30y - 50y)	139,450	31,215
72	6B (Males 30y - 50y)	96,900	30,327
73	7B (Females 30y - 50y)	173,775	35,507
74	8B (Males 30y - 50y)	94,425	28,936
75	13B (Males < 30y)	69,900	27,912
76	14B (Males < 30y)	28,225	25,829
77	15B (Females 30y - 50y)	156,450	27,714
78	16B (Females 30y - 50y)	151,425	26,174
79	17B (Males < 30y)	180,200	32,724
80	18B (Females < 30y)	295,350	40,460
81	19B (Females < 30y)	205,325	33,700
82	20B (Females 30y - 50y)	199,250	32,543
83	21B (Males 30y - 50y)	310,825	53,503
84	22B (Males > 50y)	241,150	36,207
85	32B (Females 30y - 50y)	88,700	28,902
86	33B (Males 30y - 50y)	206,950	47,435
87	34B (Males > 50y)	194,875	37,318
88	35B (Males 30y - 50y)	201,100	43,557
89	36B (Males > 50y)	57,475	37,745
90	37B (Males 30y - 50y)	202,650	41,942



91	38B (Females < 30y)	199,950	47,881
92	39B (Males 30y - 50y)	132,250	36,249
93	1C (Males < 30y)	305,025	57,635
94	2C (Males 30y - 50y)	336,625	70,630
95	3C (Males 30y - 50y)	182,825	31,609
96	4C (Males 30y - 50y)	242,550	35,574
97	5C (Males 30y - 50y)	306,100	39,842
98	6C (Females < 30y)	254,525	37,275
99	7C (Females < 30y)	292,550	40,622
100	8C (Females < 30y)	68,650	31,758
101	9C (Males 30y - 50y)	173,525	30,534
102	10C (Males < 30y)	40,925	26,162
103	11C (Females < 30y)	119,575	33,919
104	12C (Males < 30y)	62,475	27,574
105	13C (Males > 50y)	283,525	48,738
106	14C (Females < 30y)	160,700	35,068
107	17C (Females > 50y)	222,775	33,334
108	18C (Females 30y - 50y)	91,875	27,183
109	19C (Females > 50y)	87,175	25,463
110	20C (Males 30y - 50y)	35,025	23,909
111	21C (Males < 30y)	159,625	39,453
112	22C (Females < 30y)	71,550	26,603
113	23C (Males 30y - 50y)	109,950	32,971
114	24C (Males 30y - 50y)	112,650	32,365
115	25C (Males > 50y)	141,625	34,532
116	26C (Females 30y - 50y)	133,150	29,739
117	27C (Females > 50y)	30,525	20,289
118	28C (Females < 30y)	48,725	26,019
119	29C (Males > 50y)	61,625	28,763
120	30C (Males 30y - 50y)	270,425	50,204
121	31C (Females > 50y)	175,375	32,367
122	32C (Males 30y - 50y)	155,475	36,585
123	33C (Females 30y - 50y)	181,450	40,871
124	34C (Males < 30y)	188,425	48,153
125	35C (Males 30y - 50y)	184,025	40,428
126	36C (Females > 50y)	179,350	35,309
127	37C (Females < 30y)	189,350	40,905
128	38C (Females < 30y)	155,450	38,659
129	39C (Males 30y - 50y)	138,025	31,734
130	40C (Females 30y - 50y)	104,225	28,400



Lampiran 6 Tabel id penumpang skenario D

No.	ID penumpang			
1	1A	(Females 30y - 50y)	45	45A (Males 30y - 50y)
2	2A	(Females 30y - 50y)	46	46A (Males < 30y)
3	3A	(Females 30y - 50y)	47	1B (Males 30y - 50y)
4	4A	(Females 30y - 50y)	48	2B (Males 30y - 50y)
5	5A	(Males 30y - 50y)	49	3B (Males 30y - 50y)
6	6A	(Males < 30y)	50	4B (Males 30y - 50y)
7	7A	(Females < 30y)	51	5B (Males > 50y)
8	8A	(Males 30y - 50y)	52	6B (Males 30y - 50y)
9	9A	(Females 30y - 50y)	53	7B (Females < 30y)
10	10A	(Females 30y - 50y)	54	8B (Males 30y - 50y)
11	11A	(Females 30y - 50y)	55	9B (Females > 50y)
12	12A	(Males < 30y)	56	10B (Females 30y - 50y)
13	13A	(Males > 50y)	57	11B (Males > 50y)
14	14A	(Males 30y - 50y)	58	12B (Females < 30y)
15	15A	(Females < 30y)	59	13B (Males 30y - 50y)
16	16A	(Females < 30y)	60	14B (Females > 50y)
17	17A	(Males < 30y)	61	15B (Females < 30y)
18	18A	(Males 30y - 50y)	62	16B (Males > 50y)
19	19A	(Females < 30y)	63	17B (Males < 30y)
20	20A	(Females 30y - 50y)	64	18B (Females > 50y)
21	21A	(Females 30y - 50y)	65	19B (Males > 50y)
22	22A	(Males 30y - 50y)	66	20B (Males 30y - 50y)
23	23A	(Females < 30y)	67	21B (Females 30y - 50y)
24	24A	(Females < 30y)	68	22B (Males 30y - 50y)
25	25A	(Males 30y - 50y)	69	23B (Females < 30y)
26	26A	(Males > 50y)	70	24B (Males > 50y)
27	27A	(Males < 30y)	71	25B (Females > 50y)
28	28A	(Females < 30y)	72	26B (Females < 30y)
29	29A	(Males 30y - 50y)	73	27B (Males > 50y)
30	30A	(Males < 30y)	74	28B (Females 30y - 50y)
31	31A	(Males > 50y)	75	29B (Females > 50y)
32	32A	(Males 30y - 50y)	76	30B (Females < 30y)
33	33A	(Females 30y - 50y)	77	31B (Females < 30y)
34	34A	(Females > 50y)	78	32B (Males > 50y)
35	35A	(Males < 30y)	79	33B (Males < 30y)
36	36A	(Males < 30y)	80	34B (Males > 50y)
37	37A	(Males < 30y)	81	35B (Females 30y - 50y)
38	38A	(Females 30y - 50y)	82	36B (Females 30y - 50y)
39	39A	(Females 30y - 50y)	83	37B (Males 30y - 50y)
	40A	(Females > 50y)	84	38B (Females > 50y)
	41A	(Males < 30y)	85	39B (Males 30y - 50y)
	42A	(Females > 50y)	86	40B (Males < 30y)
	43A	(Males 30y - 50y)	87	41B (Males < 30y)
	44A	(Females 30y - 50y)	88	42B (Females 30y - 50y)
			89	43B (Males < 30y)



90	44B	(Males 30y - 50y)	111	21C	(Males < 30y)
91	1C	(Females 30y - 50y)	112	22C	(Females 30y - 50y)
92	2C	(Males < 30y)	113	23C	(Females 30y - 50y)
93	3C	(Males 30y - 50y)	114	24C	(Females 30y - 50y)
94	4C	(Males 30y - 50y)	115	25C	(Males < 30y)
95	5C	(Females > 50y)	116	26C	(Females > 50y)
96	6C	(Males 30y - 50y)	117	27C	(Females < 30y)
97	7C	(Males 30y - 50y)	118	28C	(Males > 50y)
98	8C	(Females 30y - 50y)	119	29C	(Females > 50y)
99	9C	(Males 30y - 50y)	120	30C	(Males 30y - 50y)
100	10C	(Females 30y - 50y)	121	31C	(Females < 30y)
101	11C	(Males < 30y)	122	32C	(Males 30y - 50y)
102	12C	(Males 30y - 50y)	123	33C	(Males 30y - 50y)
103	13C	(Females > 50y)	124	34C	(Females 30y - 50y)
104	14C	(Females 30y - 50y)	125	35C	(Females < 30y)
105	15C	(Males > 50y)	126	36C	(Males 30y - 50y)
106	16C	(Males 30y - 50y)	127	37C	(Females < 30y)
107	17C	(Females 30y - 50y)	128	38C	(Females 30y - 50y)
108	18C	(Males < 30y)	129	39C	(Females 30y - 50y)
109	19C	(Females 30y - 50y)	130	40C	(Females < 30y)
110	20C	(Females 30y - 50y)			



Lampiran 7 Tabel hasil simulasi evakuasi skenario D dengan bantuan *Pathfinder* 2023

NO.	Kode	Waktu	Jarak
1	31A (Males > 50y)	185,450	41,332
2	32A (Males 30y - 50y)	193,675	42,578
3	33A (Females 30y - 50y)	253,250	45,768
4	34A (Females > 50y)	260,175	42,637
5	41A (Males < 30y)	225,475	52,633
6	42A (Females > 50y)	280,500	51,739
7	43A (Males 30y - 50y)	197,125	54,595
8	44A (Females 30y - 50y)	275,475	47,429
9	45A (Males 30y - 50y)	201,025	44,788
10	46A (Males < 30y)	220,175	48,034
11	9B (Females > 50y)	219,000	39,104
12	10B (Females 30y - 50y)	279,675	64,226
13	11B (Males > 50y)	266,150	58,704
14	12B (Females < 30y)	253,475	66,298
15	23B (Females < 30y)	217,325	46,541
16	24B (Males > 50y)	220,750	53,416
17	25B (Females > 50y)	264,250	46,938
18	26B (Females < 30y)	235,550	59,802
19	27B (Males > 50y)	262,325	51,057
20	28B (Females 30y - 50y)	241,025	41,674
21	29B (Females > 50y)	272,225	40,276
22	30B (Females < 30y)	188,150	37,578
23	31B (Females < 30y)	202,400	43,042
24	40B (Males < 30y)	216,375	48,257
25	41B (Males < 30y)	221,875	46,724
26	42B (Females 30y - 50y)	207,450	41,226
27	43B (Males < 30y)	193,800	41,008
28	44B (Males 30y - 50y)	244,800	46,712
29	16C (Males 30y - 50y)	180,500	46,222
30	15C (Males > 50y)	182,350	39,934
31	1A (Females 30y - 50y)	184,425	43,987
32	2A (Females 30y - 50y)	158,275	37,433
33	3A (Females 30y - 50y)	181,275	38,867
34	4A (Females 30y - 50y)	163,500	36,323
35	5A (Males 30y - 50y)	203,075	38,924
36	6A (Males < 30y)	178,825	43,819
37	7A (Females < 30y)	168,100	35,655
38	8A (Males 30y - 50y)	101,150	34,025
39	9A (Females 30y - 50y)	113,100	33,918
40	10A (Females 30y - 50y)	88,250	32,876
41	11A (Females 30y - 50y)	72,100	35,354
42	12A (Males < 30y)	98,875	33,631
43	13A (Males > 50y)	261,100	59,863



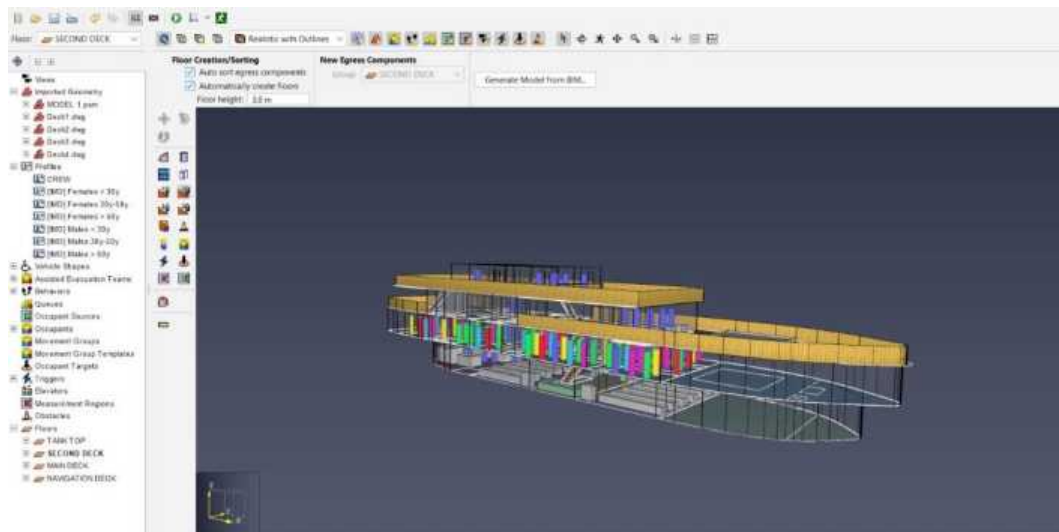
44	14A (Males 30y - 50y)	151,550	36,637
45	15A (Females < 30y)	145,550	37,007
46	16A (Females < 30y)	44,825	34,153
47	17A (Males < 30y)	81,100	32,781
48	18A (Males 30y - 50y)	54,700	30,579
49	19A (Females < 30y)	199,425	32,861
50	20A (Females 30y - 50y)	192,600	31,712
51	21A (Females 30y - 50y)	202,500	41,483
52	22A (Males 30y - 50y)	143,650	44,322
53	23A (Females < 30y)	205,350	49,806
54	24A (Females < 30y)	209,000	44,166
55	25A (Males 30y - 50y)	180,550	39,308
56	26A (Males > 50y)	242,400	48,340
57	27A (Males < 30y)	148,150	40,689
58	28A (Females < 30y)	161,850	33,473
59	29A (Males 30y - 50y)	140,700	38,316
60	30A (Males < 30y)	28,375	23,644
61	35A (Males < 30y)	149,575	42,820
62	36A (Males < 30y)	150,950	36,846
63	37A (Males < 30y)	169,325	44,006
64	38A (Females 30y - 50y)	166,800	35,428
65	39A (Females 30y - 50y)	183,675	45,385
66	40A (Females > 50y)	180,025	36,376
67	1B (Males 30y - 50y)	243,575	54,594
68	2B (Males 30y - 50y)	155,575	35,837
69	3B (Males 30y - 50y)	203,600	59,715
70	4B (Males 30y - 50y)	142,300	45,086
71	5B (Males > 50y)	147,600	32,751
72	6B (Males 30y - 50y)	281,700	64,018
73	7B (Females < 30y)	114,475	33,486
74	8B (Males 30y - 50y)	80,200	29,675
75	13B (Males 30y - 50y)	37,900	33,146
76	14B (Females > 50y)	49,075	24,679
77	15B (Females < 30y)	79,650	31,275
78	16B (Males > 50y)	72,775	25,770
79	17B (Males < 30y)	119,350	40,290
80	18B (Females > 50y)	93,725	28,599
81	19B (Males > 50y)	194,825	49,266
82	20B (Males 30y - 50y)	219,100	62,035
83	21B (Females 30y - 50y)	115,725	33,166
84	22B (Males 30y - 50y)	198,125	38,392
85	32B (Males > 50y)	68,200	28,064
86	33B (Males < 30y)	135,475	45,314
87	34B (Males > 50y)	85,750	40,751
88	35B (Females 30y - 50y)	124,650	33,462
89	36B (Females 30y - 50y)	95,375	32,977
90	37B (Males 30y - 50y)	91,300	42,223



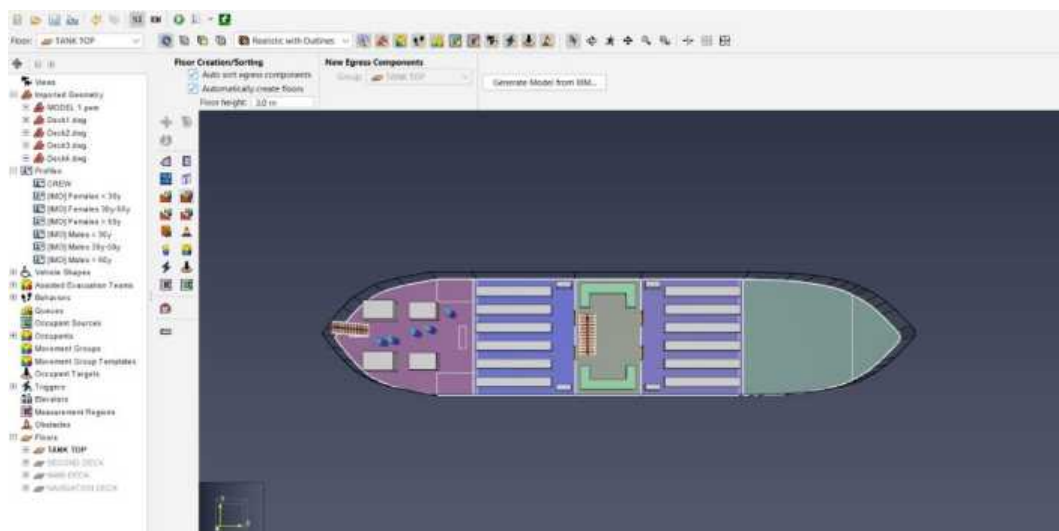
91	38B (Females > 50y)	142,000	35,399
92	39B (Males 30y - 50y)	90,225	31,362
93	1C (Females 30y - 50y)	132,750	34,189
94	2C (Males < 30y)	141,875	33,373
95	3C (Males 30y - 50y)	114,450	31,731
96	4C (Males 30y - 50y)	88,525	37,591
97	5C (Females > 50y)	127,525	30,534
98	6C (Males 30y - 50y)	222,300	47,365
99	7C (Males 30y - 50y)	139,475	35,498
100	8C (Females 30y - 50y)	78,850	26,416
101	9C (Males 30y - 50y)	230,675	46,716
102	10C (Females 30y - 50y)	74,300	26,409
103	11C (Males < 30y)	260,050	65,794
104	12C (Males 30y - 50y)	51,350	26,479
105	13C (Females > 50y)	99,925	30,385
106	14C (Females 30y - 50y)	134,050	33,631
107	17C (Females 30y - 50y)	150,250	40,253
108	18C (Males < 30y)	38,200	24,929
109	19C (Females 30y - 50y)	61,875	25,203
110	20C (Females 30y - 50y)	110,925	26,428
111	21C (Males < 30y)	137,625	49,150
112	22C (Females 30y - 50y)	81,400	34,747
113	23C (Females 30y - 50y)	84,275	37,240
114	24C (Females 30y - 50y)	67,175	34,911
115	25C (Males < 30y)	86,900	40,791
116	26C (Females > 50y)	85,800	28,841
117	27C (Females < 30y)	22,175	20,249
118	28C (Males > 50y)	54,200	25,204
119	29C (Females > 50y)	65,125	27,155
120	30C (Males 30y - 50y)	50,050	32,016
121	31C (Females < 30y)	143,250	40,800
122	32C (Males 30y - 50y)	86,950	34,510
123	33C (Males 30y - 50y)	108,600	43,156
124	34C (Females 30y - 50y)	107,775	32,015
125	35C (Females < 30y)	128,700	41,076
126	36C (Males 30y - 50y)	115,975	38,939
127	37C (Females < 30y)	111,975	40,239
128	38C (Females 30y - 50y)	148,975	42,114
129	39C (Females 30y - 50y)	82,950	40,859
130	40C (Females < 30y)	66,975	28,929



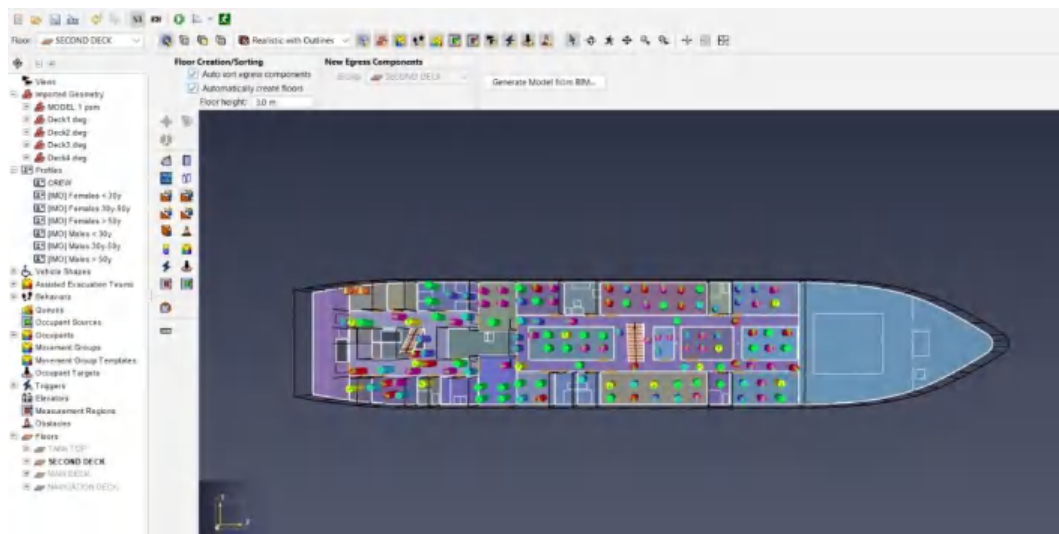
Lampiran 8 Pemodelan Kapal Latih Barombong di *Pathfinder 2023*



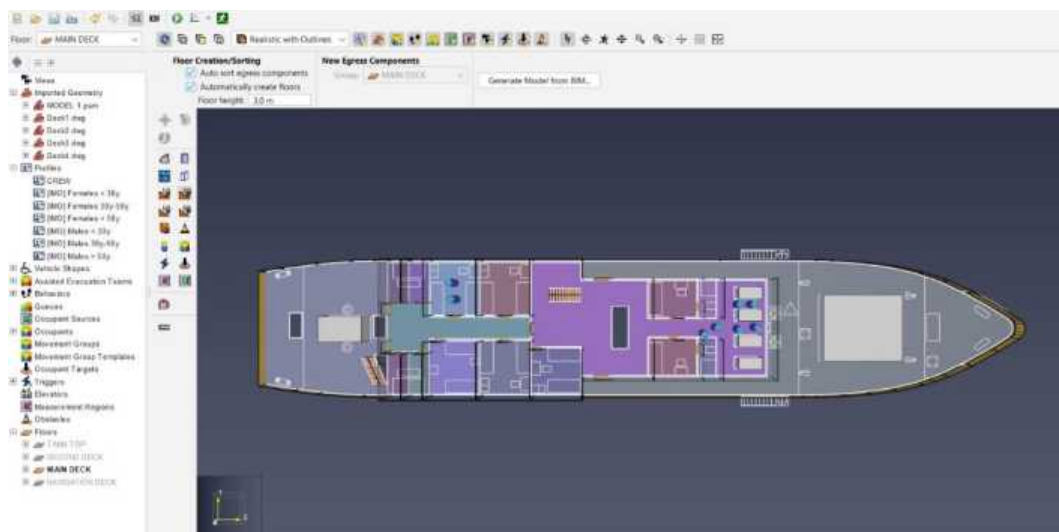
Lampiran 9 Pemodelan *double bottom deck* dan 5 crew di kamar mesin Kapal Latih Barombong di *Pathfinder 2023*



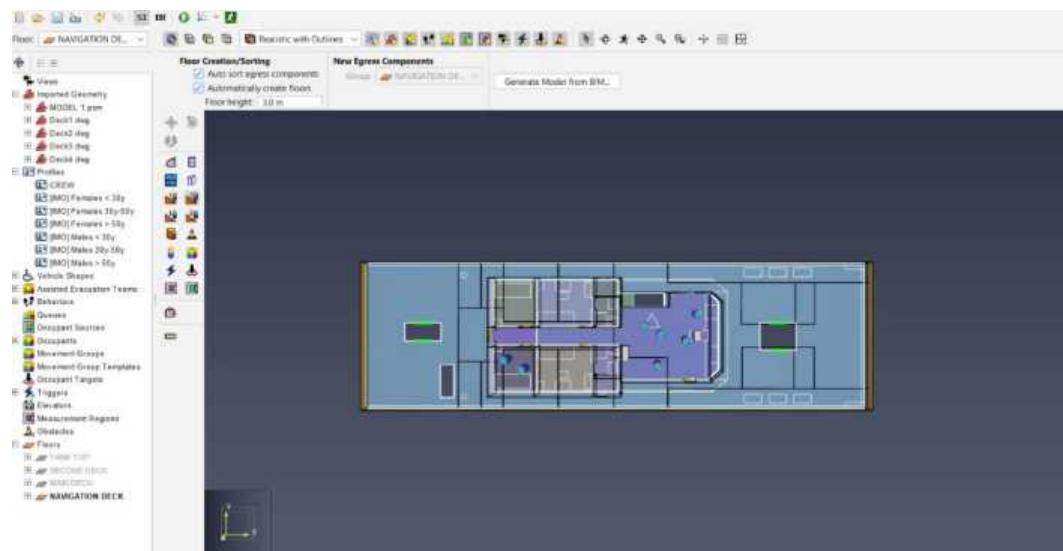
Lampiran 10 Pemodelan posisi penumpang yang diatur untuk simulasi Kapal Latih Barombong di *Pathfinder 2023*



Lampiran 11 Pemodelan *main deck* dan *crew* Kapal Latih Barombong di *Pathfinder 2023*



Lampiran 12 Pemodelan *navigation deck*, *crew* dan *muster station* Kapal Latih Barombong di *Pathfinder 2023*



Optimized using
trial version
www.balesio.com



No. : 8040/UN4.7.7/TD.06/2024
Lampiran : -
Hal : Penugasan Bimbingan Tugas Akhir

Kepada Yth. : **Wakil Dekan**
Bidang Akademik dan Kemahasiswaan
Fakultas Teknik UNHAS
di-
Gowa

Dengan hormat,
Kiranya dosen pembimbing tugas akhir (skripsi) dari mahasiswa :

Nama : Fauzan Arsandi
Stambuk : D091191066
Nama : Teknik Sistem Perkapalan

Dengan judul tugas akhir:
Desain Safety and Fire Control Plan dan Perancangan Escape Route Pada Kapal Latih Barombong

Dosen Pembimbing:
Andi Husni Sitepu, S.T., M.T.

Dapat dibuatkan Surat Penugasan Bimbingan Tugas Akhir
Demikian penyampaian kami, atas perhatian dan kerjasamanya diucapkan terima kasih.

Gowa, 16 April 2024
Ketua Departemen Teknik Sistem Perkapalan



Dr.Eng.Faisal Mahmudin, S.T,M.Inf.Tech,M.Eng
Nip. 19810211 200501 1 003





SURAT PENUGASAN

No.8041/UN4.7.1/TD.06/2024

Dari : Dekan Fakultas Teknik Universitas Hasanuddin
Kepada : **1. Andi Husni Sitepu, S.T., M.T.** **Pembimbing**
Isi : 1. Bahwa berdasarkan Peraturan Rektor Universitas Hasanuddin Nomor 29/UN4.1/2023 tentang Penyelenggaraan Program Sarjana Universitas Hasanuddin, dengan ini menugaskan Saudara sebagai PEMBIMBING MAHASISWA, maka dengan ini kami menugaskan Saudara untuk membimbing penulisan Skripsi/Tugas Akhir mahasiswa Teknik Sistem Perkapalan Fakultas Teknik Universitas Hasanuddin di bawah ini :

Nama :
Fauzan Arsandi

No. Stambuk :
D091191066

Judul Skripsi/Tugas Akhir :

"Desain Safety and Fire Control Plan dan Perancangan Escape Route Pada Kapal Latih Barombong"

2. Surat penugasan pembimbing ini mulai berlaku sejak tanggal ditetapkannya dan berakhir sampai selesainya penulisan Skripsi/Tugas Akhir Mahasiswa tersebut.
3. Agar surat penugasan ini dilaksanakan sebaik - baiknya dengan penuh rasa tanggung jawab.

Ditetapkan di Gowa,
Pada Tanggal 16 April 2024
a.n Dekan,
Wakil Dekan Bidang Akademik dan
Kemahasiswaan,



Dr. Amil Ahmad Ilham, S.T., M.IT.
Nip. 19731010 199802 1 001

Tembusan:

1. Dekan FT-UH
2. Ketua Departemen Teknik Sistem Perkapalan
3. Mahasiswa yang bersangkutan



Optimized using
trial version
www.balesio.com



KEMENTERIAN PENDIDIKAN KEBUDAYAAN,
RISET DAN TEKNOLOGI
UNIVERSITAS HASANUDDIN

Jalan Perintis Kemerdekaan Km. 10, Makassar 90245
Telepon (0411) 586200, (6 Saluran), 584200, Fax (0411) 585188
Laman: www.unhas.ac.id

SURAT IZIN UJIAN SKRIPSI
Nomor 24099/UN4.1.1.1/PK.03.02/2024

Berdasarkan Peraturan Rektor Universitas Hasanuddin tentang Penyelenggaraan Program Sarjana Nomor 29/UN4.1//2023 tanggal 17 Oktober 2023, dengan ini menerangkan bahwa:

Nama : FAUZAN ARSANDI
NIM : D091191066
Tempat/Tanggal Lahir : MAKASSAR/19 APRIL 2001
Fakultas : TEKNIK
Program Studi : TEK. SISTEM PERKAPALAN

Telah memenuhi syarat untuk Ujian Skripsi Strata I (S1). Demikian Surat Persetujuan ini dibuat untuk digunakan dalam proses pelaksanaan ujian skripsi, dengan ketentuan dapat mengikuti wisuda jika persyaratan kelulusan/wisuda telah dipenuhi. Terima Kasih.

Makassar, 27 Juni 2024
a.n. Direktur Pendidikan
Kepala Subdirektorat Administrasi
Pendidikan,



Susy Asteria Irafany, S.T., M.Si.
NIP 197403132009102001

Keterangan online wisuda:

User : D091191066
Password : 2160200
Alamat : <http://wisuda.unhas.ac.id>
Web



Optimized using
trial version
www.balesio.com





KEMENTERIAN PENDIDIKAN KEBUDAYAAN,
RISET, DAN TEKNOLOGI
UNIVERSITAS HASANUDDIN FAKULTAS TEKNIK
DEPARTEMEN TEKNIK SISTEM PERKAPALAN

Jalan Poros Malino Km. 6 Bontomarannu 92171 Gowa, Sulawesi Selatan

Telp/Fax : +62-411-588400, E-Mail: marine.eng@unhas.ac.id

Laman : eng.unhas.ac.id/tsp

No. : 17959/UN4.7.7/TD.06/2024
Lampiran : -
Hal : Penerbitan Surat Penugasan Panitia
Ujian Sarjana Strata Satu (S1)

Kepada Yth. : **Wakil Dekan Bidang Akademik
dan Kemahasiswaan Fakultas Teknik UNHAS
di-
Gowa**

Dengan hormat,

Berdasarkan Persetujuan Pembimbing Mahasiswa, Bersama ini diusulkan susunan Panitia Ujian Sarjana Strata Satu (S1) bagi mahasiswa Departemen Teknik Sistem Perkapalan Fakultas Teknik Universitas Hasanuddin atas nama :

Nama : Fauzan Arsandi
Stambuk : D091191066

Maka dengan ini kami sampaikan Susunan Panitia Ujian Sarjana Strata Satu (S1) sebagai berikut :

Ketua : Andi Husni Sitepu, S.T., M.T.
Anggota : 1. M. Rusdy Alwi, S.T., M.T.
2. Baharuddin, S.T., M.T.

Judul Tugas Akhir mahasiswa yang bersangkutan adalah :

Desain Safety and Fire Control Plan dan Perancangan Escape Route Pada Kapal Latih Barombang

Untuk dapat diterbitkan surat penugasannya.

Demikian penyampaian kami, atas perhatian dan kerjasamanya diucapkan terima kasih.

Gowa, 29 Juli 2024

Ketua Departemen Teknik Sistem Perkapalan



Dr.Eng.Ir.Faisal Mahmudin, S.T,M.Inf.Tech,M.Eng.,IPM
Nip. 19810211 200501 1 003





KEMENTERIAN PENDIDIKAN, KEBUDAYAAN,
RISET, DAN TEKNOLOGI
UNIVERSITAS HASANUDDIN
FAKULTAS TEKNIK

Jalan Poros Malino km. 6 Bontomarannu Gowa, 92171, Sulawesi Selatan
Telepon (0411) 586200, 584002, e-mail: teknik@unhas.ac.id
Laman : eng.unhas.ac.id

SURAT PENUGASAN

No.17960/UN4.7.1/TD.06/2024

Dari : Dekan Fakultas Teknik Universitas Hasanuddin
Kepada : Mereka yang tercantum namanya dibawah ini.
Isi : 1. Bahwa Berdasarkan Peraturan Rektor Universitas Hasanuddin Nomor 29/UN4.1/2023 tentang Penyelenggaraan Program Sarjana Universitas Hasanuddin dengan ini menugaskan Saudara sebagai PANITIA UJIAN SARJANA Program Strata Satu (S1) Teknik Sistem Perkapalan Fakultas Teknik Universitas Hasanuddin dengan susunan sebagai berikut :

Ketua : Andi Husni Sitepu, S.T., M.T.
Anggota : 1. M. Rusdy Alwi, S.T., M.T.
2. Baharuddin, S.T., M.T.

Untuk menguji bagi mahasiswa tersebut dibawah ini :
Nama/NIM : Fauzan Arsandi / D091191066

Judul Thesis/Skripsi :

Desain Safety and Fire Control Plan dan Perancangan Escape Route Pada Kapal Latih Barombong

2. Waktu ujian ditetapkan oleh Panitia Ujian Akhir Program Strata Satu (S1).
3. Agar surat penugasan ini dilaksanakan sebaik-baiknya dengan penuh rasa tanggung jawab.
4. Surat penugasan ini berlaku sejak tanggal ditetapkan sampai dengan berakhirnya Ujian Sarjana tersebut, dengan ketentuan bahwa segala sesuatunya akan ditinjau dan diperbaiki sebagaimana mestinya apabila dikemudian hari ternyata terdapat kekeliruan dalam keputusan ini.

Ditetapkan di Gowa,

Pada Tanggal 29 Juli 2024

a.n Dekan,

Wakil Dekan Bidang Akademik dan Kemahasiswaan,



Dr. Amil Ahmad Ilham, S.T., M.IT.

Nip. 19731010 199802 1 001

Tembusan:

1. Dekan FT-UH
2. Ketua Departemen Teknik Sistem Perkapalan
3. Kasubag Umum dan Perlengkapan FT-UH



Optimized using
trial version
www.balesio.com



KEMENTERIAN PENDIDIKAN KEBUDAYAAN,
RISET, DAN TEKNOLOGI
UNIVERSITAS HASANUDDIN FAKULTAS TEKNIK
DEPARTEMEN TEKNIK SISTEM PERKAPALAN

Jalan Poros Malino Km. 6 Bontomarannu 92171 Gowa, Sulawesi Selatan

Telp/Fax : +62-411-588400, E-Mail: marine.eng@unhas.ac.id

Laman : eng.unhas.ac.id/tsp

No. : 17959/UN4.7.7/TD.06/2024

29 Juli 2024

Lamp : -

Hal : Undangan Ujian Akhir

Kepada

Yth.

- : **1. Andi Husni Sitepu, S.T., M.T.**
2. M. Rusdy Alwi, S.T., M.T.
3. Baharuddin, S.T., M.T.

Dengan hormat,

Kami mengundang Saudara/saudari kiranya berkenan hadir untuk menyaksikan/bertindak selaku penguji Ujian Akhir Strata Satu Fakultas Teknik Universitas Hasanuddin yang akan diselenggarakan pada :

Hari / Tanggal : **Kamis, 01 Agustus 2024**

Jam : **10:00 - 12:00 WITA**

Tempat : **Ruang Sidang Teknik Sistem Perkapalan**

Dibawakan oleh

Nama/Stambuk : Fauzan Arsandi / D091191066

Atas kesedian dan kehadiran Saudara/Saudari diucapkan terima kasih.

Ketua Departemen Teknik Sistem Perkapalan



Dr.Eng.Ir.Faisal Mahmudin, S.T,M.Inf.Tech,M.Eng.,IPM

Nip. 19810211 200501 1 003





BERITA ACARA UJIAN SEMINAR TUTUP

Terhadap Mahasiswa

Nama : Fauzan Arsandi
Stambuk : D091191066
Judul : *Desain Safety and Fire Control Plan dan Perancangan Escape Route Pada Kapal Latih Barombong*
Hari/Tanggal : Kamis, 01 Agustus 2024
Waktu : 10:00 - 12:00 WITA
Tempat : Ruang Sidang Teknik Sistem Perkapalan
Keputusan Sidang/
Catatan : *lulus dgn nilai 88 (A) ✓*
Catatan :

PANITIA UJIAN

No.	Susunan Panitia	Nama	Tanda Tangan
1.	Ketua/Anggota	Andi Husni Sitepu, S.T., M.T.	1.
2.	Anggota	M. Rusdy Alwi, S.T., M.T.	2.
3.	Anggota	Baharuddin, S.T., M.T.	3.

Gowa, Juli 2024
Ketua Sidang

Andi Husni Sitepu, S.T., M.T.
Nip. 19770217 200112 1 001

