

## DAFTAR PUSTAKA

- A. Aryadi, M. A. Kahar, dan R. Mardiana. 2022. *Analysis of Response and Performance of Bugis-Makassar Stilt House Structures Using Pushover Analysis*. *IOP Conf. Series: Earth and Environmental Science*. IOP Publishing. 1117 (2022) 012032. doi:10.1088/1755-1315/1117/1/012032
- A. Buchanan dan D. Moroder. 2017. *Log house performance in the 2016 Kaikoura earthquake*, *Bull. New Zeal. Soc. Earthq. Eng.*, vol. 50, no. 2
- A. Erarslan. 2019. *Timber construction systems in anatolian vernacular architecture*,” *Bull. Transilv. Univ. Brasov, Ser. II For. Wood Ind. Agric. Food Eng.*
- A. J. Pierre dan I. Hidayat, “*Seismic performance of reinforced concrete structures with pushover analysis*,” *IOP Conf. Ser. Earth Environ. Sci.*, vol. 426, no. 1, p. 012045, Feb. 2020
- American Society of Civil Engineers (ASCE). Seismic Evaluation of Existing Buildings, ASCE Standard ASCE/SEI 31-03, American Society of Civil Engineers / Structural Engineering Institute, Reston, VA, 2003.*
- American Society for Testing and Materials.(2008). Annual Book of ASTM (Volume 04.10 Wood D143). American Society for Testing and Material*
- Anonim. 2014a Kapal pinisi. [.http://id.wikipedia.org/wiki/Pinisi](http://id.wikipedia.org/wiki/Pinisi).
- Anonim. 2014b. Detil data Vitex cofassus Reinw. ex Blume.<http://www.proseanet.org/florakita/browser.php?docsid=862>.
- ASCE Standard 41-17 *Seismic Evaluation and Retrofit of Existing Buildings* (Virginia: American Society of Civil Engineers)
- A. S. Elnashai dan L. Di Sarno, *Fundamentals of Earthquake Engineering*. John Wiley andSons, 2008
- Atika, F. A., 2018. Transformasi Bentuk Arsitektur Rumah Adat Bugis di Jalan Usman Sadar III/36, Gresik. Surabaya, Institut Teknologi Adhi Tama Surabaya, pp. 243 - 248
- Armstrong F. Sompotan, 2012. [Online] Available at:<http://www.slideshare.net/armstrong/bukugeologi-sulawesi-armstrong-sompotan> [Accessed 4 Maret 2016]



uhammad Al-Faaruuq, Z. A., 2020. Kearifan Lokal Rumah Tradisional gis Baranti di Kabupaten Sidrap. *Timpalaja Architecture Student rnals*, 2(1), pp. 68-71

Awaludin, Ali, & Irawati. 2005. *Konstruksi Kayu*. Yogyakarta: Teknik Sipil Universitas Gadjah Mada.

Azhar, S. (2010). *Building Information Modeling (BIM): Trends Benefits, Risks and Challenges for the AEC Industry*. *ASCE Journal of Leadership and Management in Engineering*, 11, 241-252

Badan Standardisasi Nasional, “SNI 1726:2019 Tata Cara Perencanaan Ketahanan Gempa Untuk Struktur Bangunan Gedung dan Nongedung.” 2019

Badan Standardisasi Nasional, “SNI 1727:2020 Beban Desain Minimum dan Kriteria Terkait Untuk Bangunan Gedung dan Struktur Lain.” 2020

Baharta, Nurjannah, Servie O. Dapas, dan Ronny Pandaleke. 2019. Evaluasi Teknis Kekuatan Struktur Rumah Kayu Tradisional Produksi Desa Woloan Terhadap Gempa Sesuai Standar Nasional Indonesia (SNI). *Jurnal Sipil Statik*. Fakultas Teknik Sipil Universitas Sam Ratulangi, Manado

Ben Sha, Linlin Xie, Xinqun Yong, Aiqun Li, 2021. *Hysteretic behavior of an ancient Chinese multi-layer timber substructure : A full-scale experimental test and analytical model*. *Journal of Building Engineering*, 43 (2021) 103163 Journal of Elsevier.

B. Junita, “Respon Struktur Bangunan Tinggi dengan Variasi Penempatan Outrigger Terhadap Beban Lateral (Studi Kasus: Bangunan Tower A ST. Moritz Panakukang),” Universitas Negeri Jakarta, 2018

B. Nasution dan A. Purqon, “Uji Respon Struktur Bangunan Bertingkat Terhadap Gempa Bumi Menggunakan Metode Elemen Hingga,” in *Prosiding SNIPS 2016*, 2016

BNPB. (2020). *Indeks Risiko Bencana Indonesia Tahun 2020*. 13. Jakarta: Badan Nasional Penanggulangan Bencana.

B. Chand, H. B. Kaushik, dan S. Das. 2020. *Material Characterization of Traditional Assam-Type Wooden Houses in Northeastern India*, *J. Mater. Civ. Eng.*, vol. 32, no. 12.

B. Chand, H. B. Kaushik, dan S. Das. 2020. *Lateral load behavior of connections in Assam-type wooden houses in the Himalayan region of India*, *Constr. Build. Mater.*, vol. 261



A. L, N.J. Enright and M.M. Mayfield. 2011. *Demographic response and history of traditional forest resource tree species in a tropical mosaic dscape in Papua New Guinea*. *Journal of Forest Ecology & nagement*. Sep2011, Vol. 262 Issue 5, p750-758. 9p

- CEN. Eurocode 8: *Design of Structures for Earthquake Resistance – Part 1: General Rules, Seismic Actions and Rules for Buildings*. European Comitee for Standardization, Brussels, 2004, 232 pp.
- Chae, Heegeon. (2017). *Architectural visualization of a BIM-based model 3D modelling and visualization*. Helsinki: Metropolia University
- Chen, Y., Yin, Y., Browne, G. J., & Li, D. (2019). *Adoption of building information modeling in Chinese construction industry: The technology-organization-environment framework*. *Engineering, Construction and Architectural Management*
- CSI, Computers and Structures, Inc. (2019). “*CSI Analysis Reference Manual for SAP2000, ETABS and SAFE*”, Barkeley, California, USA
- Dogangun, A., Tuluk. O.I., Livaoglu, R., Acar,R. 2005. *Traditional Wooden Buildings and Their Damages During Earthquakes in Turkey*. [www.elsevier.com/locate/engfailanal](http://www.elsevier.com/locate/engfailanal), *Engineering Failure Analysis 13* (2006) 981-996
- D. Purnamasari, “Analisis Kinerja Struktur Beton Bertulang dengan Variasi Konfigurasi Dinding Geser Menggunakan Pushover Analysis,” Universitas Sriwijaya, 2019
- E. Crayssac, X. Song, Y. Wu, dan K. Li. 2018. *Lateral performance of mortise-tenon jointed traditional timber frames with wood panel infill*, *Eng. Struct.*, vol. 161, pp. 223–230, Apr.
- Federal Emergency Management Agency (FEMA). *NEHRP Recommended Seismic Provisions for New Buildings and Other Structures*, FEMA P-750, *Building Seismic Safety Commission, Federal Emergency Management Agency*, Washington, D.C., 2009.
- FEMA, “*Improvement of Nonlinear Static Seismic Analysis Procedures*,” *FEMA 440, Federal Emergency Management Agency, Washington DC*, vol. 440, no. June. p. 392, 2005
- F. P. Hsiao, Y. Oktavianus, dan Y. C. Ou, “*A pushover seismic analysis method for asymmetric and tall buildings*,” *J. Chinese Inst. Eng. Trans. Chinese Inst. Eng. A*, vol. 38, no.8, 2015
- Ghaffarianhoseini, A., Doan, D. T., Zhang, T., Naismith, N., & Tookey, J. (2016). *A BIM readiness & implementation strategy for SME construction companies in the UK*. In *Proceedings of the 33rd CIB W78 Conference*



ft. (2015) *Archicad User Manual*, from <http://www.graphisoft.com>

ncelos, P. B. Lourenco, dan E. Poletti. 2015. *An Overview on the Seismic behaviour of Timber Frame Structures, in Historical Earthquake-Resistant*

*Timber Frames in the Mediterranean Area*, Springer International Publishing, pp. 119–132.

Hariyanto, A. Dwi, T. Sugeng, W. Andry, 2020. Teknik Tradisional Pada Struktur Rumah panggung Di Kabupaten Bima Untuk Ketahanan Terhadap Gempa. *Jurnal Lingkungan Binaan. Ruang Space*. ISSN: 2355-570X

Hartawan, B. Suhendro, E. Pradipto, A. Kusumawanto, 2015. Perkembangan Sistem Struktur Bangunan Rumah Bugis Sulawesi Selatan. *Proceeding The 5th Annual Engineering Seminar (AES 2015) Free Trade Engineers: Opportunity or Threat*. Fakultas Teknik UGM. Jogyakarta 12 Februari 2015 A-(51-60)

Haygreen, J. F., and J. L. Bowyer. (1982). *Forest Product and Wood Science, an Introduction*. Diterjemahkan oleh AH Sutjipto, 1993

Haygreen, John G., and Jim L. Bowyer. (1996). *Forest products and wood science: an introduction*. No. Ed. 3. Iowa state university press.

I. Samsya, “Evaluasi Aplikasi Penggunaan Base Isolation pada Gedung Grand Keisha Menggunakan Analisa *Pushover*,” Institut Teknologi Sepuluh November, Surabaya, 2017

ISO 16670, 2003, *Timber structures - Joints made with mechanical fasteners - Quasi-static reversed-cyclic test method*. ISO 16670 The international Organization for Standardization, Geneva. ISO (1997) is the 1997 draft version of this standard.

Juan, Y. K., Lai, W. Y., & Shih, S. G. (2017). *Building information modeling acceptance and readiness assessment in Taiwanese architectural firms*. *Journal of Civil Engineering and Management*, 23(3), 356-367

MacKinzie, Scott H, Rendek, Adam. (2015) *ArchiCAD 19 – The Definitive Guide*. Birmingham : Packt publishing

M. B. Bağbancı dan O. K. Bağbancı. 2018. *The Dynamic Properties of Historic Timber-Framed Masonry Structures in Bursa, Turkey*,” *Shock Vib.*, vol. 2018,

Mardanas dkk. 1985. *Arsitektur Tradisional Sulawesi Selatan*. Ujung Pandang: Depdikbud

Misam Dogan, 2010. *Seismic analysis of traditional buildings : bagdadi and Misamis*, *Anadolu University Journal of Science and Technology – Applied Sciences and Engineering*, cilt/vol. : 11-say/no:1:35-45



. 2018. Studi Komparasi Mutu Kayu Jati, Kayu Mahoni, Kayu Johar, Kayu Akasia Dan Kayu Meranti Di Surakarta Antara Hasil Uji

Laboratorium Dengan Analisis SNI 7973-2013, Universitas Muhammadiyah Surakarta

Nawawi, N., 2020. Teknologi Membangun Rumah Bugis menurut Panrita Bola Ugi. *Jurnal Teknosains*, 14(1), pp. 44-52.

N. H. Crista, T. N. Widorini, dan L. N. Anggraini, “Perbandingan Tulangan Lentur pada Gedung Fakultas Psikologi Universitas Semarang dengan Membandingkan Peraturan SNI Gempa 2012 dengan SNI Gempa 2019,” *J. Pengemb. Rekayasa dan Teknol.*, vol. 16, no.2, pp. 143–162, 2020

N. Ş. Guchan. 2018. *History and Characteristics of Construction Techniques Used in Traditional Timber Ottoman Houses*, *Int. J. Archit. Herit.*, vol. 12, no. 1, pp. 1–20, Jan.

Pelras, Christian. 2006. *Manusia Bugis*. Jakarta: Forum Jakarta-Paris

Pranata, Y.A., Suryoatmono, B., Tjondro, J.A.(2011). Penelitian Numerikal dan Eksperimental Kuat Lentur Kayu Indonesia. Seminar Nasional-1 BMPTTSSI - KoNTekS 5, Universitas Sumatera Utara, Medan, 14 Oktober 2011.

Prasetyawati, C.A. 2013. Eksplorasi Benih Bitti (*Vitex Cofassus*) di Sulawesi Selatan. <http://balihutmakassar.org/eksplorasi-benih-bitti-vitex-cofassus-di-sulawesi-selatan/>.

Prihatini, Z., 2021. *Kompas.com*. [Online] Available at: <https://www.kompas.com/sains/read/2021/12/15/070500523/mengapa-gempa-ntt-terasahingga-makassar-ini-penjelasanpakar?page=all> [Accessed 25 Februari 2022].

Porcu M.C. *Reducing seismic stress on buildings through inertia limiters at floor level*. In: *Earthquake Resistant Engineering Structures IX*. WIT Transactions on the Built Environment, vol. 120, WIT Press, UK, 2013.

Porcu M.C. *Plastic disconnection of storey masses for seismic stress control*. WIT Transactions on the Built Environment. 2015;152:125-133. DOI: 10.2495/ERES150101

R. Cornelis, W. Bunganaen, dan B. H. U. Tay, “Analisis Perbandingan Gaya Geser Tingkat, Gaya Geser Tingkat dan Simpangan Antar Tingkat Akibat Beban Gempa Berdasarkan Peraturan Gempa SNI 1726-2002 dan SNI 1726-2012,” *Tek. Sipil*, vol. III, no. 2, pp. 205–216, 2014



R. N. S. jianto, “Analisis Gempa Non-Linier Statik *Pushover* Dengan Metode na 440 Untuk Evaluasi Kinerja Struktur Bangunan Gedung,” in *Prosiding Seminar Nasional: Keandalan Infrastruktur Pekerjaan Umum dan Pemukiman Rakyat Bagi Kemajuan Bangsa*, 2019, pp. 129–142

- Sacks, R. and Barak, R. (2010). *Teaching Building Information Modeling as an Integral Part of Freshman Year Civil Engineering Education. Journal of Professional Issues in Engineering Education and Practice* , 136, 30-38
- Sacks, Rafael., E, Chuck., Lee, G. , Teicholz, P. (2018). *BIM (Building Information Modeling) Handbook 3rd Edition*. New Jersey: John Wiley& Sons Press
- Saripuddin, 2018. Perbandingan Sambungan Konstruksi Yang Menggunakan Pasak Dengan Non Pasak Pada Rumah Tradisional Bugis. Tesis, Magister Teknik Arsitektur Unhas.
- Smith W.R. *Building homes to withstand hurricane damage. Forest Products Journal*. 1961;11(6):176-177.
- SNI 03-3399-1994. (1994). *Metode Pengujian Kuat Tarik Kayu di Laboratorium Jakarta: Badan Standarisasi Nasional*.
- SNI 03-3400-1994. (1994). *Metode Pengujian Kuat Geser Kayu di Laboratorium Jakarta: Badan Standarisasi Nasional*.
- SNI 03-3958-1995. (1995). *Metode Pengujian Kuat Tekan Kayu di Laboratorium Jakarta: Badan Standarisasi Nasional*.
- SNI 03-3959-1995. (1995). *Metode Pengujian Kuat Lentur Kayu di Laboratorium Jakarta: Badan Standarisasi Nasional*.
- SNI 03-6850-2002. (2002). *Metode Pengujian Kadar Air Kayu, dan Bahan Berkayu. Jakarta: Badan Standarisasi Nasional*.
- SNI 7973:2013. (2013). *Spesifikasi Desain Untuk Konstruksi Kayu Indonesia . Jakarta :Badan Standarisasi Nasional*.
- S. Paudel, N. Shima, dan T. Fujii. 2018. *Development of earthquake resilient housing in Nepal by development of earthwquake introducing Japanese, AIJ Journal of Technology and Design*, vol. 24, no. 57.
- Succar, B. (2009). *Building Information Modelling Framework: A Research and Delivery Foundation for Industry Stakeholders. Automation in Construction*, 18, 357-375
- Tankut, A.N., Tankut, N. 2005. *The Effects of Joint Forms (Shape) and Dimensions on The Strengths of Mortise and Tenon Joints. Turkish Journal of Agriculture and Forestry*, 29, 6, 493-498
- U. Wijaya, *Desain Rekayasa Gempa Berbasis Kinerja (Performance Based Design)*, 2nd ed. Andi, 2018



- T. Horie dan S. Kaneko. 2017. *Arrangement and terminology of the main structural members of the understructure in Japanese and British vernacular houses: Comparative studies in the terminology of traditional timber construction Part 2*, *J. Archit. Plan. (Transactions AIJ)*, vol. 82, no. 740.
- Tato, S. 2008. *Arsitektur Tradisional Sulawesi Selatan dari Masa ke Masa*. Makalah disajikan dalam Seminar Regional Arsitektur Rumah dan Perumahan Tradisional di Kawasan Timur Indonesia, Jurusan Arsitektur Fakultas Teknik Unhas dan BPTPT Makassar, Makassar 24 April 2008.
- Uang CM, Bertero VV. 1988. *Implications of recorded earthquake ground motions on seismic design of buildings structures Report no UCB/EERC-88/13 Earthquake Engineering Research Center, University of California at Berkeley*.
- Uang CM, Bertero VV. 1990. *Evaluation of seismic energy in structures*. *Earthq Eng Struct Dyn* ;19:77–90.
- W. A, R. Suryanita, dan Z. Djauhari, “Prediksi Respons Struktur Gedung Berdasarkan Respons Spektrum Gempa Indonesia Menggunakan Metode Jaringan Saraf Tiruan,” *J. Sainstek STT Pekanbaru*, vol. 4, no. 1, pp. 1–15, 2016.
- Widyawati, Ratna. 2010. *Elemen Konstruksi Kayu*. FT-Unila. Lampung
- Widiyanto, A dan Siarudin, M. 2011. *Kajian Kualitas Kayu Jabon (Antochepalus cadamba Miq.) Sebagai Bahan Baku Bingkai Kayu (Studi Kasus di PT Daisen Wood Frame, Bogor)*. *Jurnal Ilmu & Teknologi Hasil Hutan* Vol 4 No 2 Desember 2011. p: 41-45
- Yenny Gunawan, Kamal A. Arif. 2015. *Budaya Tektonika Rumah Bugis di Kabupaten Bone*. Lembaga Penelitian dan Pengabdian Masyarakat kepada Masyarakat. Universitas Katalolik Parahyangan
- Y. D. Aktaş. 2017. *Seismic resistance of traditional timber-frame himiş structures in Turkey: a brief overview*, *Int. Wood Prod. J.*, vol. 8, pp. 21–28.
- Y. M. Kim. 2020. *Structural analysis and conceptual seismic design of large-span Korean traditional timber structure*, *Civ. Eng. Archit.*, vol. 8, no. 2.
- Xianjie Meng, Qingshan Yang, Jianwei Wei, Tieying Li , 2018. *Experimental investigation on the lateral structural performance of a traditional Chinese -Ming dynasty timber structure based on half-scale pseudo-static tests. zine-ring Structures 167, Journal of Elsvier*



Xianjie Meng, Tieying Li, Qingshan Yang , 2018. *Experimental Study on the Seismic Performance of Traditional Chuan-Dou Style Wood Frames in Southern China. Enginnee-ring Structures 167, Journal of Elsvier*

Xianjie Meng, Tieying Li, Qingshan Yang, 2019. *Experimental study on the seismic mechanism of a full-scale traditional Chinese timber structure . Enginnee-ring Structures 167, Journal of Elsvier*





## DOKUMENTASI PENELITIAN



1. Perakitan kolom-balok untuk posisi depan



2. Perakitan kolom-balok untuk posisi belakang



Optimized using  
trial version  
[www.balesio.com](http://www.balesio.com)

an persiapan pemasangan  
tang



4. Proses perakitan dan menghubungkan kolom-balok depan dan belakang dengan balok melintang



5. Perakitan struktur balok lantai dan struktur atap



6. Hasil perakitan spesimen struktur rumah panggung Bugis-Makassar



Optimized using  
trial version  
[www.balesio.com](http://www.balesio.com)

Perakitan frame besi WF dan pipa besi pengunci pada jack actuator dan digunakan sebagai pendorong dan penarik saat pemberian beban lateral



8. Persiapan pemasangan LVDT



9. Pemasangan strain gauge pada area dekat sambungan balok-kolom



Optimized using  
trial version  
[www.balesio.com](http://www.balesio.com)

pan data logger dan pemasangan instrumen penelitian



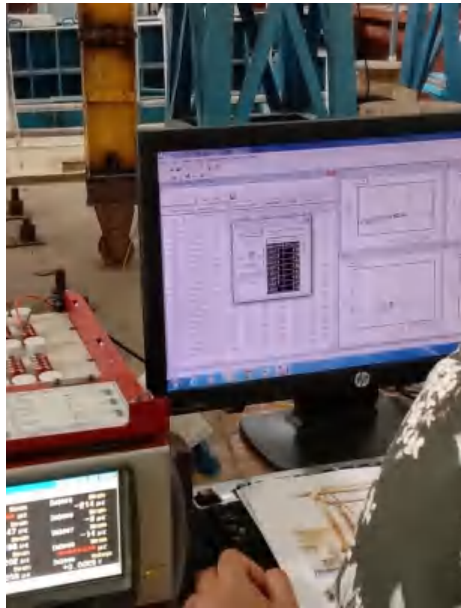
11. Pengujian spesimen pada arah pembebanan tekan (+), terlihat miring ke arah belakang



12. Spesimen kembali ke posisi semula setelah pelepasan pemberian beban, dan persiapan untuk pembebanan tarik (-)



13. Pengujian spesimen pada arah pembebanan tarik (-), terlihat miring ke arah depan



14. Kontrol kurva hysreritis di monitor data logger pada saat awal pembebanan



15. Kontrol kurva hysreritis di monitor data logger pada saat akhir pembebanan



16. Hasil pengujian spesimen pada saat pembebanan maksimum

