

DAFTAR PUSTAKA

- Abudarda, A. R. F., Zainuddin, M., & Safruddin. (2021). Impact Of Increasing Sea Surface Temperature On Potential Fishing Zone Of Skipjack Tuna Katsuwonus Pelamis In Makassar Strait. *Jurnal Ilmu Dan Teknologi Kelautan Tropis*, 13(3), 429–439. <https://doi.org/10.29244/jitkt.v13i3.35692>
- Adnan. 2010. Analisis suhu permukaan laut dan Klorofil data indaraja berhubungannya dengan hasil tangkapan ikan tongkol (*Euthynnus affinis*) di perairan Kalimantan Timur. *J PSP FPIK Unpatti*. 1:1-12.
- Arief, M. (2004). Aplikasi Data Satelit Resolusi Rendah dan SIG Untuk Analisa Distribusi Spatial Zona Potensial Penangkapan Ikan (ZPPI) Di Selat Makassar. Peneliti Bidang Aplikasi Pengindraan Jauh LAPAN.
- Arrizabalaga H, Dufour F, Kell L, Merino G, Ibaibarriaga L, Chust G, Bonhomeau S. 2015. Global habitat preferences of commercially vulnerable tuna. *Deep Sea Research Part II: Tropical. Studies in. Oceanogrhy*.102–112.
- Baharuddin, Nur Abrianti Islamiah. *Analisis Pengaruh Perubahan Oseanografi Terhadap Produksi Ikan Layang (Decapterus Spp) Di Perairan Selat Makassar, Sulawesi Selatan= Analysis Of The Effect Of Oceanographic Changes On The Production Of Scad (Decapterus Spp) In Makassar Strait, South Sulawesi*. Diss. Universitas Hasanuddin, 2021.
- Brill, R. W., & Lutcavage, M. E. (2001). Understanding environmental influences on movements and depth distributions of tunas and billfishes can significantly improve population assessments. *American Fisheries Society Symposium*, 25, 179–198.
- Chaliluddin, M.A., M. Ikram, D. Rianjuanda. 2019. Identifikasi Alat Penangkapan Ikan Ramah Lingkungan Berbasis CCRF di Kabupaten Pidie, Aceh. *Jurnal Galung Tropika* 8(3): 197- 208.
- Daris, L., Jaya, J., & Massiseng, A. N. A. (2021). Pemetaan daerah penangkapan ikan tongkol (*Euthynnus affinis*) berbasis SIG di perairan Teluk Bone Mapping of fishing area (*Euthynnus affinis*) GIS based in scholar.archive.org. <https://scholar.archive.org/work/s4m36eomfja3rhnw2qabh3ht34/access/wayback/https://ejournal.stipwunraha.ac.id/index.php/ISLE/article/download/514/pdf>
- Edward, L. L. (2019). Seasonal occurrence of potential fishing zones along northern Andhra Pradesh coast. *Indian Journal of Geo-Marine Sciences*, 48(2),228232. https://api.elsevier.com/content/abstract/scopus_id/85065041217
- Fitriani, D. (2019). Analisis Konsentrasi Klorofil-a di Perairan Sekitar Kota Makassar dan data Satelit TOPEX/POSEIDON. *Jurnal Sains dan Pendidikan* Nomor 3, 279-285.
- Fitriani, D. (2019). Determination of Mackarel Tuna (*Euthynnus sp.*) Potential and Based on Clorophyl- A Satellite Image in Palabuhan. *Albacore* Volume 3, No 2: Hal 169-178.



- Ekayana, I. M., Karang, I. W. G. A., As-syakur, A. R., Jatmiko, I., & Novianto, D. (2017). Hubungan Hasil Tangkapan Ikan Tuna Selama Februari-Maret 2016 dengan Konsentrasi Klorofil-a dan SPL dari Data Penginderaan Jauh Di Perairan Selatan Jawa – Bali. *Journal of Marine and Aquatic Sciences*, 3(1), 19. <https://doi.org/10.24843/jmas.2017.v3.i01.19-29>
- Ena, Odie, S., Tallo, I., & Ayubi, A. (2022). Zona Potensi Penangkapan Ikan Menggunakan Citra Satelit Di Perairan Kabupaten Alor. *Jurnal Bahari Papadak*, 3(1), 60–67. <https://unimuda.ejournal.id/jurnalquaafishunimuda/article/view/2911%0Ahttps://unimuda.e-journal.id/download/2911/1136>
- Fanly, C., Tambengi, J., Monica, E., & Sulistio, A. (2019). Identifikasi Wilayah Potensial Sebaran Ikan Cakalang Berbasis Data Citra Satelit AQUA MODIS Guna Mendukung Peningkatan Kualitas Tangkapan Ikan Di Indonesia (Studi Kasus : Laut Nusa Tenggara Timur) Identification of Potential Areas for the Distribution o. 357–365.
- Fauziah, Setiawan, A., Agustriani, F., Rozirwan, Melki, Nurjuliasti Ningsih, E., & Ulqodry, T. Z. (2022). Distribution pattern of potential fishing zones in the Bangka Strait waters: An application of the remote sensing technique. *Egyptian Journal of Remote Sensing and Space Science*, 25(1), 257–265. <https://doi.org/10.1016/j.ejrs.2021.12.003>
- Firdaus, M., Besar, B., Sosial, R., Kelautan, E., Perikanan, D., Brsdmkp, G., Lt, I., Pasir, J., Nomor, P., Timur, A., & Utara, J. (n.d.). *The Profile of Tuna and Cakalang Fishery in Indonesia*.2018
- Fujaya Y. 1999. Fisiologi ikan. Makasar (ID) : Universitas Hasanuddin.
- Galland G, Rogers A, Nickson A. 2016. Netting billions: A global valuation of tuna.
- Hidayat, R., Zainuddin, M., Mallawa, A., Ahmad Mustapha, M., Safruddin, & Rani Sahni Putri, A.(2020). Estimating potential fishing zones for Skipjack Tuna (Katsuwonus pelamis) Abundance in Southern Makassar Strait. *IOP Conference Series: Earth and Environmental Science*, 564(1). <https://doi.org/10.1088/1755-1315/564/1/012082>
- Hoolihan, J. P., Wells, R. J. D., Luo, J., Falterman, B., Prince, E. D., & Rooker, J. R. (2014). Vertical and Horizontal Movements of Yellowfin Tuna in the Gulf of Mexico. *Marine and Coastal Fisheries*, 6(1), 211–222. <https://doi.org/10.1080/19425120.2014.935900>
- IILSS. (2023). About Flores Sea, facts and maps. IILSS-International Institute for Law of the Sea Studies. <https://iilss.net/about-flores-sea-facts-and-maps/>
- Iufri, A. 2014. Penentuan Karakteristik Hotspot Ikan Cakalang (Katsuwonus pelamis) di Teluk Bone [Tesis]. Universitas Hasanuddin, Makassar. 123 hal.
- Jayabaya, P. (2020). Work Package 2: Technological Innovation for Development Deliverable T2.1.1: Project report Applications of Technology for Sustainable Development of the Coastal Zone: A view.



- Karina, I. (2021). Pertanggungjawaban Pidana Terhadap Penggunaan Alat Tangkap Ikan Illegal. *Fiat Iustitia: Jurnal Hukum*, 92–103. <https://doi.org/10.54367/fiat.v1i2.1156>
- Nelce Mailoa, Meigy, Edir Lokollo, Dessyre Marlen Nendissa, Pavita Indriani Harsono Program Studi Teknologi Hasil Perikanan, Fakultas Perikanan dan Ilmu Kelautan Universitas Pattimura, Kampus Unpatti-Poka Jalan Chr Soplanit Poka, and Ambon Maluku. n.d. "KARAKTERISTIK MIKROBIOLOGI DAN KIMIAWI IKAN TUNA ASAP." *JPHPI 2019*. Vol. 22.
- Nontji. (2005). *Laut Nusantara*. Jakarta : Djambatan.
- Nugraheni, A. D., Zainuri, M., Wirasatriya, A., & Maslukah, L. (2022). Sebaran Klorofil-a secara Horizontal di Perairan Muara Sungai Jajar, Demak. *Buletin Oseanografi Marina*, 11(2), 221–230. <https://doi.org/10.14710/buloma.v1i2.40004>
- M. Rokhis et.,al (2014). Pemanfaatan data satelit NPP dan altimetri untuk penentuan Zona Potensi Penangkapan Ikan. Pusat Pemanfaatan Penginderaan Jauh Deputi Bidang Penginderaan Jauh Lembaga Penerbangan Dan Antariksa Nasional (LAPAN)
- Paulangan, Y P. 2020. "Fishing Season and Participatory Mapping of the Fishing Ground of Target Fish in Depapre Bay, Jayapura Regency, Papua Indonesia." *IOP Conference Series: Earth and Environmental Science*. <https://doi.org/10.1088/1755-1315/584/1/012031>.
- Pratiwi, D. (2018). Pemetaan Zona Potensial Penangkapan Ikan Cakalang (Katsuwonus pelamis) Berbasis Data Citra Satelit dan Data Hasil Tangkapan Di Perairan Barru, Selat Makassar.
- Pusat Pemanfaatan Penginderaan Jauh LAPAN. (2014). Pengembangan Model Pemanfaatan Data Satelit NPP dan Altimetri Untuk Penentuan Zona Potensi Penangkapan Ikan. Buku Laporan Akhir Kegiatan 2014. Jakarta.
- Putri, A. R. S. (2021). Mapping potential fishing zones for skipjack tuna in the southern Makassar Strait, Indonesia, using Pelagic Habitat Index (PHI). *Biodiversitas*, 22(7), 3037–3045. <https://doi.org/10.13057/biodiv/d220758>
- Safurudin, Aswar, B., Rijal Ashar, M., Hidayat, R., Dewi, Y. K., Umar, M. T., Farhum, S. A., Mallawa, A., & Zainuddin, M. (2019). The Fishing Ground of Large Pelagic Fish during the Southeast Monsoon in Indonesian Fisheries Management Area-713. *IOP Conference Series: Earth and Environmental Science*, 370(1), 0–10. <https://doi.org/10.1088/1755-1315/370/1/012045>
- Sahidi, S., Sapsuha, G. D., Laitupa, A. F., & Tangke, U. (2015). Hubungan faktor dengan hasil tangkapan pelagis besar di perairan Batang Dua, Maluku Utara. *Agrikan: Jurnal Agribisnis Perikanan*, 8(2), 53–63. <https://doi.org/10.29239/j.agrikan.8.2.53-63>
- P. Subardjo., Muslim. (2013). Pengaruh Monsun Terhadap Klorofil-a di Perairan Selatan Bali. *Jurnal Oseanografi Marina*, 2(1), 79-87.



- Siregar, E. S. Y., Siregar, V. P., Jhonnerie, R., Alkayakni, M., & Samsul, B. (2019). Prediction of potential fishing zones for yellowfin tuna (*Thunnus albacares*) using maxent models in Aceh province waters. IOP Conference Series: Earth and Environmental Science, 284(1). <https://doi.org/10.1088/1755-1315/284/1/012029>
- Schaefer, K. M., Fuller, D. W., & Aldana, G. (2014). Movements, behavior, and habitat utilization of yellowfin tuna (*Thunnus albacares*) in waters surrounding the Revillagigedo Islands Archipelago Biosphere Reserve, Mexico. Fisheries Oceanography, 23(1), 65–82. <https://doi.org/10.1111/fog.12047>
- Shaari, N. R., & Mustapha, M. A. (2018). Predicting potential rastrelliger kanagurta fish habitat using MODIS satellite data and GIS modeling: A case study of exclusive economic zone, Malaysia. Sains Malaysiana, 47(7), 1369–1378. <https://doi.org/10.17576/jsm-2018-4707-03>
- Schaefer, K. M., Fuller, D. W., & Block, B. A. (2007). Movements, behavior, and habitat utilization of yellowfin tuna (*Thunnus albacares*) in the northeastern Pacific Ocean, ascertained through archival tag data. Marine Biology, 152(3), 503–525. <https://doi.org/10.1007/s00227-007-0689-x>
- Suhana, M. P. (2018). Karakteristik sebaran menegak dan melintang suhu dan Salinitas perairan Selatan Jawa. *Dinamika Maritim*, 6(2), 9–11. <http://ojs.umrah.ac.id/index.php/dinamikamaritim%0A> <https://www.neliti.com/publications/233822/karakteristik-sebaran-menegak-danz-melintang-suhudan-Salinitas-perairan-selatan>
- Suri, E., & Siregar, Y. (2018). *Potential Fishing Ground For Tuna (Thunnus sp) Based On Mapping Of Sea Surface Temperature Distribution And Catches Data By Using Satellite Imagery Of Aquarius In Sumatra Waters View project*. <https://www.researchgate.net/publication/346052004>
- Syah, A. F., Gaol, J. L., Zainuddin, M., Apriliya, N. R., Berlianty, D., & Mahabrort, D. (2020). Detection of potential fishing zones of Bigeye tuna (*Jhunnus obesus*) at profundity of 155 M in the eastern Indian Ocean. Indonesian Journal of Geography, 52(1), 29–35. <https://doi.org/10.22146/ijg.43708>
- Syah, A. F., Yanti Siregar, E. S., Siregar, V. P., & Agus, S. B. (2020). Application of remotely sensed data and maximum entropy model in detecting potential fishing zones of Yellowfin tuna (*Thunnus albacares*) in the eastern Indian Ocean off Sumatera. Journal of Physics: Conference Series, 1569(4). <https://doi.org/10.1088/1742-6596/1569/4/042097>
- Tadjuddah M. 2005. Analisis daerah penangkapan ikan madidihang. Institut Pertanian



ya, A., & Zainuddin, M. (2011). Analisis hubungan karakteristik dan hasil tangkapan yellowfin tuna (*Thunnus albacares*) di t Banda. *Agrikan: Jurnal Agribisnis Perikanan*, 4(2), 1–14. [/10.29239/j.agrikan.4.2.1-14](https://doi.org/10.29239/j.agrikan.4.2.1-14)

- Teknologi Perikanan dan Kelautan, J., Agus Mulyadi, R., Fedi Alfiadi Sondita, M., Yusfiandayani, R., Studi Teknologi Perikanan Laut, P., Pascasarjana, S., Pemanfaatan Sumberdaya Perikanan, D., Perikanan dan Ilmu Kelautan, F., & Pertanian Bogor, I. (2017). Suhu Permukaan Laut Dan Kedalaman Tertangkapnya Tuna Oleh Kapal Pancing Ulur Yang Dilengkapi Lampu the Sea Surface Temperature and Depth of Caaught By Hand Liner Equipped Lamps. *Jurnal Teknologi Perikanan Dan Kelautan*, 8(2), 199–207.
- Tesen, M., Yuli, R., & Hutapea, F. (n.d.2020). Studi Pengoperasian Pancing Ulur Dan Komposisi Hasil Tangkapan Pada Km Jala Jana 05 Di Wpp 572 Study Of Hand Line Operation And Catch Composition On Km Jala Jana 05 In Wpp 572.
- Vieira da Silva, C., Ortigão, M., Willaert, T., Rosa, R., Nunes, L. C., & Cunha-e-Sá, M. A. (2021). Participatory Geographic Information Systems (PGIS): Alternative approaches to identify potential conflicts and positional accuracy in marine and coastal ecosystem services. *Marine Policy*, 131, 0–26. <https://doi.org/10.1016/j.marpol.2021.104650>
- Vijay Prakash, K., Geetha Vimala, C. S., Nagamani, P. V., Baranval, N. K., Manche, S., Preethi Latha, T., Bhavani, I. V. G., Umamaheswara Rao, Y., Phanindra, C. S. N., Srinivas, K., & Kumari, K. P. (2021). Role of physical oceanography parameters in ocean's biological response with the passage of cyclone Titli in the Bay of Bengal. *Journal of Earth System Science*, 130(3). <https://doi.org/10.1007/s12040-021-01625-y>.
- Weng, K. C., Stokesbury, M. J. W., Boustany, A. M., Seitz, A. C., Teo, S. L. H., Miller, S. K., & Block, B. A. (2009). Habitat and behaviour of yellowfin tuna *Thunnus albacares* in the gulf of mexico determined using pop-up satellite archival tags. *Journal of Fish Biology*, 74(7), 1434–1449. <https://doi.org/10.1111/j.1095-8649.2009.02209.x>
- Yanti Siregar, E. S., Siregar, V. P., & Agus, S. B. (2018). ANALISIS DAERAH PENANGKAPAN IKAN TUNA SIRIP KUNING *Thunnus albacares* DI PERAIRAN SUMATERA BARAT BERDASARKAN MODEL GAM. *Jurnal Ilmu Dan Teknologi Kelautan Tropis*, 10(2), 501–516. <https://doi.org/10.29244/jitkt.v10i2.21908>
- Zainuddin M [et al.]. 2013. Characterizing Potential Fishing Zone Of Skipjack Tuna During The Southeast Monsoon In The Bone Bay-Flores Sea Using Remotely Sensed Oceanographic Data. *International Journal Of Geosciences.*, vol. 4, no. 259-266
- Zainuddin, M., Farhum, A., Safruddin, S., Selamat, M. B., Sudirman, S., Nurdin, N., & Ridwan, M., & Saitoh, S. I. (2017). Detection of pelagic habitat skipjack tuna in the Gulf of Bone-Flores Sea, southwestern Coral Sea, Indonesia. *PLoS ONE*, 12(10), 1–20. <https://doi.org/10.1371/journal.pone.0185601>



Zhou, W., Hu, H., Fan, W., & Jin, S. (2022). Impact of Abnormal Climatic Events on the CPUE of Yellowfin Tuna Fishing in the Central and Western Pacific. *Sustainability (Switzerland)*, 14(3). <https://doi.org/10.3390/su14031217>

Zuur A, Ieno E, Smith G. 2007. *Analysing ecological data*. Springer.



LAMPIRAN

Titik Tangkapan dan Parameter Oseanografi

Bulan	Titik Koordinat		HT	Parameter Oseanografi				
	Longitude	Latitude		SPL	CHL	Salin	Arus	Kedal
JULI	122,5356722	-8,100019444	52	29,13	0,13	33,51	0,11	-3048,13
	122,5371194	-8,091225	56	29,15	0,13	33,51	0,11	-3089,22
	122,3700167	-8,055444444	37	29	0,13	33,52	0,15	-3124,59
	122,3668861	-8,045186111	45	28,99	0,13	33,53	0,15	-3155,95
	122,4004583	-7,99935	62	29,03	0,13	33,56	0,14	-3178,83
	122,3942306	-7,979758333	64	29,05	0,13	33,57	0,13	-3167,95
	122,2252778	-8,031936111	51	28,97	0,13	33,58	0,14	-2640,13
	122,1609194	-8,063633333	37	28,92	0,13	33,59	0,12	-1499,89
	122,1487028	-8,040116667	47	28,94	0,13	33,59	0,11	-1841,6
	122,126175	-8,010075	57	28,98	0,13	33,6	0,08	-2378,41
	122,0815278	-8,026302778	66	28,98	0,13	33,61	0,06	-2294,03
AGUSTUS	122,6285583	-8,2035	41	28,66	0,12	33,95	0,13	-1000,17
	122,6775361	-8,158272222	40	28,68	0,12	33,95	0,2	-812,76
	122,6533667	-8,251586111	41	28,56	0,13	33,95	0,08	-472,87
	122,6144139	-8,210977778	45	28,64	0,12	33,96	0,12	-1091,22
	122,5567528	-8,248466667	44	28,59	0,12	33,96	0,08	-1517,75
	122,6188389	-8,037266667	52	28,82	0,1	33,97	0,22	-3069,59
	122,7071611	-8,037972222	50	28,75	0,11	33,96	0,33	-1567,57
	122,5312917	-8,247977778	59	28,61	0,12	33,96	0,09	-2100,4
	122,2059056	-8,042683333	70	28,79	0,1	33,98	0,04	-2204,97
	122,2242639	-8,060875	34	28,79	0,1	33,98	0,04	-2315,01
	122,255475	-8,088338889	33	28,81	0,1	33,98	0,05	-2561,07
	122,2850583	-8,077061111	33	28,83	0,1	33,98	0,06	-2940,12
	122,1323139	-7,983513889	67	28,73	0,11	34	0,03	-2503,03
122,1575889	-8,010236111	60	28,75	0,11	33,99	0,03	-2321,28	
	122,76265	-8,046052778	67	28,57	0,14	34,24	0,35	-813,78
	122,6488667	-8,260647222	72	28,58	0,13	34,22	0,08	-673,73
	122,6488667	-8,209738889	69	28,56	0,14	34,22	0,14	-508,9
	122,6488667	-8,107886111	72	28,96	0,13	34,26	0,18	-2791,9
	122,6488667	-8,083236111	56	28,98	0,13	34,27	0,2	-2922,86
	122,6488667	-8,157041667	46	28,87	0,13	34,25	0,14	-2786,86
	122,6488667	-8,041313889	53	28,8	0,13	34,32	0,13	-1881,77



Bulan	Titik Koordinat		HT	Parameter Oseanografi				
	Longitude	Latitude		SPL	CHL	Salin	Arus	Kedal
	122,59755	-8,241675	56	28,64	0,13	34,23	0,07	-1052,79
	122,6325528	-8,255325	68	28,58	0,13	34,22	0,08	-613,62
	122,6010389	-8,250416667	65	28,62	0,13	34,23	0,08	-916,02
	122,4705167	-8,040883333	68	28,98	0,12	34,28	0,21	-3156,57
	122,4583028	-8,051430556	34	29	0,13	34,28	0,2	-3128,25
	122,3245361	-8,012863889	56	28,91	0,12	34,31	0,17	-3180,27
	122,4682778	-8,022594444	41	28,96	0,12	34,28	0,22	-3211,28
	122,4571528	-8,079069444	42	28,99	0,13	34,27	0,2	-2961,99
	122,404425	-8,082872222	59	28,98	0,13	34,27	0,2	-2987,85
	122,4222778	-8,0031	65	28,99	0,12	34,3	0,21	-3177,38
	122,5315472	-8,028666667	65	28,97	0,12	34,28	0,23	-3336,45
	122,5518833	-8,073458333	51	28,95	0,13	34,26	0,22	-3266,54
OKTOBER	122,7731972	-8,046705556	48	29,54	0,14	34,36	0,24	-796,04
	122,6458944	-8,176233333	30	29,54	0,15	34,38	0,09	-985,08
	122,6555417	-8,071588889	78	29,66	0,14	34,41	0,17	-2237,39
	122,6252278	-8,24995	62	29,61	0,13	34,39	0,13	-708,08
	122,7523361	-8,011716667	48	29,59	0,13	34,39	0,3	-1345,57
	122,0911889	-7,871402778	73	29,51	0,13	34,42	0,16	-2591,69
	122,1259583	-7,925427778	75	29,59	0,13	34,41	0,16	-2540,61
	122,0618611	-7,802561111	82	29,37	0,13	34,44	0,15	-2506,27
	122,0783417	-7,808002778	77	29,37	0,13	34,44	0,15	-2438,03
	122,0446472	-7,980738889	70	29,59	0,13	34,39	0,17	-2418,32
	122,0611278	-8,022344444	69	29,66	0,13	34,39	0,17	-2227,36
	122,0432833	-8,011455556	57	29,65	0,13	34,39	0,17	-2388,96
	122,207775	-8,023319444	56	29,68	0,13	34,39	0,17	-2517,42
	122,4033639	-8,044980556	31	29,76	0,14	34,39	0,19	-3167,38
	122,4786417	-8,067791667	39	29,73	0,15	34,4	0,17	-3085,28
	122,43845	-8,108925	53	29,69	0,15	34,39	0,15	-2805,04
	122,5211	-8,104613889	55	29,64	0,15	34,4	0,14	-2946,24
	122,5518833	-8,036433333	49	29,72	0,14	34,4	0,22	-3293,49
122,5778	-8,037544444	62	30,91	0,18	33,72	0,27	-2201,36	
122,5667	-8,035277778	65	30,85	0,18	33,72	0,28	-2066,61	
122,5389	-8,048811111	57	30,82	0,19	33,72	0,31	-1762,67	
122,5444	-8,053244444	48	30,83	0,19	33,71	0,33	-1549,91	



Optimization Software:
www.balesio.com

Bulan	Titik Koordinat		HT	Parameter Oseanografi				
	Longitude	Latitude		SPL	CHL	Salin	Arus	Kedal
	122,2508917	-8,072177778	50	31,04	0,19	33,71	0,38	-2615,14
	122,2910528	-8,097416667	48	31	0,19	33,72	0,34	-2717,09
	122,3049778	-8,068783333	41	31,06	0,2	33,72	0,36	-3089,15
	122,0854361	-8,052008333	36	30,84	0,19	33,71	0,3	-1709,71
	122,0567833	-8,066430556	42	30,84	0,19	33,71	0,33	-1695,51
	122,6914583	-8,013611111	55	30,95	0,18	33,76	0,44	-2184,66
	122,7220333	-8,042327778	54	30,85	0,19	33,79	0,45	-1271,29
	122,7655167	-8,004252778	30	30,86	0,19	33,77	0,53	-1452,73
	122,5615778	-8,018766667	50	31,02	0,17	33,74	0,4	-3270,43
	122,6799278	-8,193438889	69	30,4	0,21	33,89	0,19	-579,63
	122,6855028	-8,190763889	58	30,39	0,21	33,89	0,19	-521,73
	122,6636639	-8,206483333	59	30,43	0,2	33,9	0,16	-595,65
	122,6331333	-8,237022222	47	30,5	0,2	33,92	0,12	-703,51
	122,3254583	-8,085997222	42	31,06	0,2	33,71	0,38	-2877,62
	122,3321528	-8,049455556	47	31,11	0,19	33,72	0,35	-3113,79
	122,369175	-8,021022222	40	31,23	0,19	33,73	0,35	-3196,37
	122,4226417	-8,025191667	42	31,17	0,18	33,73	0,37	-3215,45
	122,4826889	-8,027005556	52	31,2	0,18	33,73	0,37	-3238,1
DESEMBER	122,2700611	-8,164577778	53	31,15	0,19	33,8	0,28	-1329,65
	122,2868111	-8,155086111	50	31,15	0,19	33,8	0,3	-1617,22
	122,2983028	-8,103391667	49	31,18	0,18	33,77	0,51	-2626,21
	122,1784611	-8,022311111	63	31,3	0,16	33,7	0,84	-2348,94
	122,1514806	-8,0252	60	31,22	0,16	33,7	0,85	-2197,53
	122,123	-8,03575	64	31,16	0,16	33,71	0,8	-2011,03
	122,0953778	-8,019897222	53	31,19	0,16	33,69	0,87	-2448,33
	122,0814472	-8,026769444	61	31,14	0,16	33,69	0,82	-2165,8
	122,4439333	-8,044025	57	31,34	0,17	33,75	0,6	-3142,86
	122,6260639	-8,0147	42	31,33	0,17	33,76	0,54	-3034,92
	122,3411028	-8,030783333	37	31,23	0,18	33,72	0,73	-3169,64
	122,4315639	-8,025483333	31	31,24	0,17	33,73	0,74	-3225,36
122,4315639	-8,074597222	37	31,31	0,17	33,78	0,53	-3054,41	
122,4315639	-8,052841667	36	31,36	0,17	33,76	0,6	-3097,1	
122,4315639	-8,056463889	65	31,3	0,19	33,8	0,37	-894,31	
122,4315639	-8,043513889	57	31,21	0,18	33,79	0,42	-1079,76	

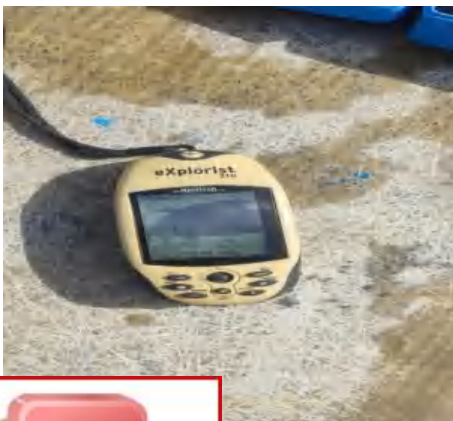


Bulan	Titik Koordinat		HT	Parameter Oseanografi				
	Longitude	Latitude		SPL	CHL	Salin	Arus	Kedal
	122,8448806	-8,025644444	40	31,09	0,22	33,8	0,48	-1722,36
	122,6180667	-8,184619444	49	31,49	0,19	33,86	0,11	-1302,5
	122,4613972	-8,105888889	47	31,33	0,19	33,79	0,41	-2807,66
	122,5254806	-8,062422222	48	31,39	0,17	33,77	0,49	-3309,24
	122,5144944	-8,138888889	40	31,42	0,21	33,81	0,22	-2766,9



Optimization Software:
www.balesio.com

Lampiran 1. Peralatan Pancing ulur




Optimization Software:
www.balesio.com

Lampiran 2. Alat Pengukuran data Oseanografi

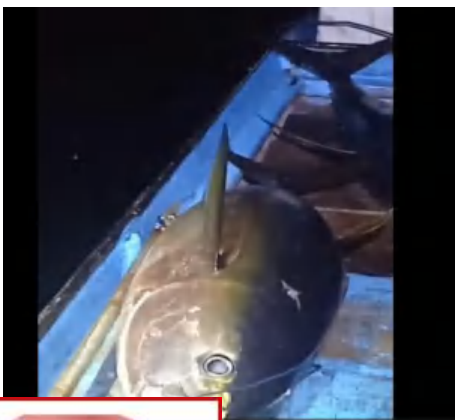
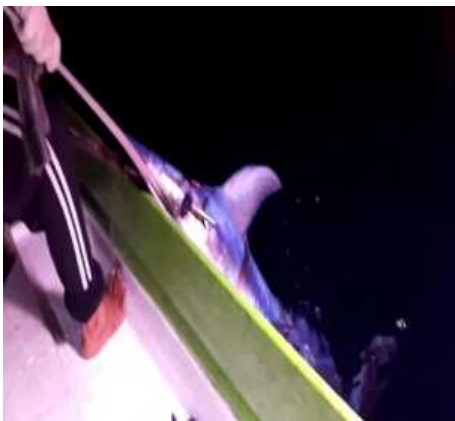


Optimization Software:
www.balesio.com

Lampiran 3. Hasil Tangkapan



Optimization Software:
www.balesio.com




Optimization Software:
www.balesio.com