

DAFTAR PUSTAKA

- Agustina, D., D. L. Setyowati, dan Sugiyanto. 2012. Analisis kapasitas infiltrasi pada beberapa penggunaan lahan di Kelurahan Sekaran Kecamatan Gunungpati Kota Semarang. *Geo Image*. 1(1), 87-93. Doi:<https://doi.org/10.15294/geoimage.v1i1.952>
- Alibasyah, M. R. 2016. Perubahan beberapa sifat fisika dan kimia ultisol akibat pemberian pupuk kompos dan kapur dolomit pada lahan berteras. *Jurnal Floratek*, 11(1), 75-87. Diakses dari: <https://jurnal.usk.ac.id/floratek/article/view/4687/4054>
- Asdak, C., 2007. *Hidrologi dan Pengelolaan Daerah Aliran Sungai*. Gajah Mada University Press. Yogyakarta.
- Aşkin, T., dan Özdemir, N. 2003. *Soil bulk density as related to soil particle size distribution and organic matter content*. *Poljoprivreda/Agriculture*. (9),52-55. Diakses dari: https://www.researchgate.net/profile/TayfunAskin/publication/47788200_Soil_bulk_density_as_related_to_soil_particle_size_distribution_and_organic_matter_content/links/542cfba70cf27e39fa93f493/Soil-bulk-density-as-related-to-soil-particle-size-distribution-and-organic-matter-content.pdf
- Budianto, P. T. H., Wirosuedarmo, dan R., Suharto, B. 2014. Perbedaan laju infiltrasi pada lahan hutan tanaman industri pinus, jati dan mahoni. *Jurnal Sumberdaya Alam dan Lingkungan*, 1(2), 15-24. Diakses dari: <https://jsal.ub.ac.id/index.php/jsal/article/download/129/105>
- Dipa, H., Manyuk, F., dan Yohanna, L. H. 2021. Analisis Tingkat Laju Infiltrasi pada Daerah Aliran Sungai (DAS) Sail. *Jurnal Tenik*. 15(1),18-25. <https://doi.org/10.31849/teknik.v15i2.5011>
- Haery, R.P. 2016. Analisis Laju dan Sebaran Vertikal Infiltrasi Tanah Pada Penggunaan Lahan Berbeda di Jampang Tengah Sukabumi. *Skripsi*. Fakultas Pertanian Institut Pertanian Bogor. Bogor.
- Hanafiah, K. A. 2005. *Dasar-dasar Ilmu Tanah*. PT Raja Grafindo Persada : Jakarta. Place retrived form: <https://ci.nii.ac.jp/ncid/BC1879880X?l=ja>
- Hanafiah, K. A., 2013. *Dasar-dasar Ilmu Tanah*. PT. Raja GrafindoPersada. Jakarta.
- Hardjowigeno, S., 2003. *Ilmu Tanah*. Akademika Pressindo. Jakarta.
- Hikmatullah, Hikmatullah, dan Erna Suryani. 2014. "Potensi Sumberdaya Lahan Pulau Sulawesi Mendukung Peningkatan Produksi Padi, Jagung, Dan Kedele. *Jurnal Sumberdaya Lahan Edisi Khusus* 8(3):41–56. [10.2017/jsdl.v8n3.2014](https://doi.org/10.2017/jsdl.v8n3.2014)
- Man MM Sutedjo. 2002. Pengantar Ilmu Tanah. Cetakan Ketiga. Cipta. Jakarta Diakses dari: <http://balaiyanpus.jogjaprovo.go.id/opac/detail-opac?id=66580>
- H. 2014. Pengaruh penggunaan lahan terhadap fungsi konservasi tanah di sub DAS Cikapundung. *Jurnal Riset Geologi Dan*



Pertambangan, 24, 77–89.
Doi: <http://dx.doi.org/10.14203/risetgeotam2014.v24.85>

- Nugraha, Fajar .2022. Pengaruh Perubahan Penutupan Lahan terhadap Komponen Aliran Sungai di Sub Tanralili *Skripsi thesis*, Universitas Hasanuddin.
- Palayukan, Y., K. 2023. Infiltrasi dan Erosi pada Tanah Lempung Berpasir , Penggunaan Lahan Kakao Monokultur. *Skripsi*. Universitas Hasanuddin
- Rahayu S, RH Widodo, MV Noordwijk, I Suryadi, dan B Verbist. 2009. *Monitorig Air Di Daerah Aliran Sungai Bogor Indonesia*. ICRAF Asia Tenggara. Bogor.
- Rauf, A. 2016. Dampak kebakaran lahan perkebunan kelapa sawit di lahan gambut Kabupaten Aceh Barat Daya terhadap sifat tanah gambut. *Jurnal Pertanian Tropik*. 3(3), 256-266. Doi: <https://doi.org/10.32734/jpt.v3i3.2985>
- Rosyidah, E. dan Wirosodarmo R. 2013. Pengaruh Sifat Fisik Tanah pada Konduktivitas Hidrolik Jenuh di 5 Penggunaan Lahan (Studi Kasus di Kelurahan Sumbersari Malang). *Jurnal Agritech*. 33(3), 340-345. Doi: <https://doi.org/10.22146/agritech.9557>
- Rusdiana, O., Nursjahbani, N. 2020. Pemetaan Sifat Fisik dan Kimia Tanah pada Tegakan Pinus merkusii di Hutan Penelitian Dramaga, Bogor. *Journal of Tropical Silviculture*, 11(1), 18-24. Doi: <https://doi.org/10.29244/j-siltrop.11.1.18-24>
- Sari, T. L. 2022. Analisis Tingkat Bahaya Erosi Menggunakan Model Swat (*Soil And Water Assessment Tool*) Di Sub DAS Tanralili. *Skripsi*. Fakultas Pertanian. Universitas Hasanuddin.
- Siahaan, R. C., dan Kusuma, Z. 2021. Karakteristik Sifat Fisik Tanah dan C-organik pada Penggunaan Lahan Berbeda di Kawasan UB Forest. *Jurnal Tanah dan Sumberdaya Lahan*, 8(2), 395-405. Doi:<https://doi.org/10.21776/ub.jtsl.2021.008.2.11>
- Subagyo, G. W. (2022). Analisis Laju Infiltrasi Pada Ruang Terbuka Hijau Yang Terbatas Di Pemukiman Perkotaan. *Jurnal Teknik Sipil: Rancang Bangun*, 8(1), 104-108. Doi:<https://doi.org/10.33506/rb.v8i1.1527>
- Suprayogo D, P Widiyanto, R Purnomosidi, Widodo H, Rusiana F, Ain Zz, Khasanah N, Dan Kusuma Z. 2004. Degradasi Sifat Fisik Tanah Sebagai Akibat Alih Fungsi Lahan Hutan Menjadi System Kopi Monokultur: Kajian Perubahan Makroporositas Tanah. *Jurnal Agrivita*. Vol 26(1): 60-68. Diakses dari: <https://apps.worldagroforestry.org/sea/Publications/files/book/BK0063->
[pdf](https://ejournals.umma.ac.id/index.php/agrotan/article/view/24/22)
7. Perubahan Penggunaan Lahan dan Dampaknya terhadap karakteristik Hidrologi Sub DAS Tanralili Provinsi Sulawesi Selatan menggunakan Model SWAT. *Jurnal Agrotan*, 3(02): 50-67. Diakses dari: <https://ejournals.umma.ac.id/index.php/agrotan/article/view/24/22>



- Surahman, S. 2022 Pengelolaan DAS Berkelanjutan Berbasis Penggunaan Lahan dengan Metode *Fuzzy Multi Attribute Decision Making (FMADM)*: Studi Kasus Sub DAS Tanralili Sulawesi Selatan. *Disertasi thesis*, Universitas Hasanuddin.
- Susanawati, L. D., Rahadi, B., Tauhid, Y. 2019. Penentuan Laju Infiltrasi Menggunakan Pengukuran Double Ring Infiltrimeter dan Perhitungan Model Horton pada Kebun Jeruk Keprok 55 (*Citrus Reticulata*) di Desa Selorejo, Kabupaten Malang. *Jurnal Sumberdaya Alam dan Lingkungan*, 5(2), 28-34. Diakses dari: <https://jsal.ub.ac.id/index.php/jsal/article/view/284>
- Valentin, C., Poesen, J., dan Li, Y. 2005. Gully erosion: Impacts, factors and control. *Catena*, 63, 132–153. Doi:<https://doi.org/10.1016/j.catena.2005.06.001>
- Widarti, Y., Widiarso, B., Krisnohadi, A. 2023. Penilaian Tiga Model Infiltrasi Terhadap Kecocokan Tiga Penggunaan Lahan pada Tanah Inceptisol Desa Tanjunga Bunut Kecamatan Tayan Hilir Kabupaten Sanggau. *Jurnal Sains Pertanian Equator*, 11(4). Doi: <http://dx.doi.org/10.26418/jspe.v11i4.59358>
- Winarni, M. 2007. Karakteristik Infiltrasi dan Hantaran Hidrolik Tanah di Sub DAS Ciliwung Hulu. *Skripsi*. Fakultas Pertanian Institut Pertanian Bogor.
- Yunagardasari, Cindy, Abdul Kadir Paloloang, dan Anthon Monde. Model infiltrasi pada berbagai penggunaan lahan di desa tulo kecamatan dolo kabupaten sigi. *Agrotekbis : Jurnal Ilmu Pertanian (e-journal)*. 53, 315-323. Diakses dari: <http://jurnal.faperta.untad.ac.id/index.php/agrotekbis/article/view/148>



LAMPIRAN

Lampiran 1. Tabel perhitungan laju infiltrasi

Waktu, t(jam)	Hutan Lokasi 1							
	Δh (mm)	f (mm/jam)	f-fc (mm/jam)	log (f- fc)	fc (mm/jam)	K	f (mm/jam)	F (mm/jam)
0.08	41	492.00	438.00	2.64	54.00	5.38	333.81	85.31
0.17	32.5	390.00	336.00	2.53	54.00	5.38	232.76	90.04
0.25	27	324.00	270.00	2.43	54.00	5.38	168.20	94.69
0.33	19	228.00	174.00	2.24	54.00	5.38	126.96	99.28
0.42	14.0	168.00	114.00	2.06	54.00	5.38	100.61	103.84
0.50	10.7	129.00	75.00	1.88	54.00	5.38	83.78	108.38
0.58	8.0	96.00	42.00	1.62	54.00	5.38	73.02	112.90
0.67	6.5	78.00	24.00	1.38	54.00	5.38	66.15	117.42
0.75	5.5	66.00	12.00	1.08	54.00	5.38	61.76	121.93
0.83	4.5	54.00	0.00		54.00	5.38	58.96	126.44
0.92	4.5	54.00	0.00		54.00	5.38	57.17	130.94
1.00	4.5	54.00	0.00		54.00	5.38	56.02	135.44
1.08	4.5	54.00	0.00		54.00	5.38	55.29	139.95
1.17					54.00	5.38	54.83	144.45
1.25					54.00	5.38	54.53	148.95
1.33					54.00	5.38	54.34	153.45
1.42					54.00	5.38	54.22	157.95
1.50					54.00	5.38	54.14	162.45
1.58					54.00	5.38	54.09	166.95
1.67					54.00	5.38	54.06	171.45
1.75					54.00	5.38	54.04	175.95
1.83					54.00	5.38	54.02	180.45
					54.00	5.38	54.01	184.95
					54.00	5.38	54.01	189.45



Waktu, t(jam)	Hutan Lokasi 2							
	Δh (mm)	f (mm/jam)	f-fc (mm/jam)	log (f- fc)	fc (mm/ja m)	K	f (mm/jam)	F (mm/jam)
0.08	43.00	516.00	456.00	2.66	60.00	6.72	320.58	72.33
0.17	25.00	300.00	216.00	2.33	60.00	6.72	208.91	77.57
0.25	21.00	252.00	84.00	1.92	60.00	6.72	145.09	82.71
0.33	13.00	156.00	72.00	1.86	60.00	6.72	108.63	87.79
0.42	10.00	120.00	24.00	1.38	60.00	6.72	87.79	92.84
0.50	7.00	84.00	12.00	1.08	60.00	6.72	75.88	97.87
0.58	5.00	60.00			60.00	6.72	69.07	102.88
0.67	5.00	60.00			60.00	6.72	65.19	107.89
0.75	5.00	60.00			60.00	6.72	62.96	112.89
0.83	5.00	60.00			60.00	6.72	61.69	117.90
0.92					60.00	6.72	60.97	122.90
1.00					60.00	6.72	60.55	127.90
1.08					60.00	6.72	60.32	132.90
1.17					60.00	6.72	60.18	137.90
1.25					60.00	6.72	60.10	142.90
1.33					60.00	6.72	60.06	147.90
1.42					60.00	6.72	60.03	152.90
1.50					60.00	6.72	60.02	157.90
1.58					60.00	6.72	60.01	162.90
1.67					60.00	6.72	60.01	167.90
1.75					60.00	6.72	60.00	172.90
1.83					60.00	6.72	60.00	177.90
1.92					60.00	6.72	60.00	182.90
2.00					60.00	6.72	60.00	187.90



Waktu, t(jam)	Hutan Lokasi 3							
	Δh (mm)	f (mm/jam)	f-fc (mm/jam)	log (f-fc)	fc (mm/jam)	K	f (mm/jam)	F (mm/jam)
0.08	41.00	492.00	444.00	2.65	48.00	6.12	314.67	75.97
0.17	25.00	300.00	252.00	2.40	48.00	6.12	208.17	80.21
0.25	15.00	180.00	132.00	2.12	48.00	6.12	144.20	84.35
0.33	13.00	156.00	108.00	2.03	48.00	6.12	105.78	88.44
0.42	10.00	120.00	72.00	1.86	48.00	6.12	82.70	92.49
0.50	5.00	60.00	12.00	1.08	48.00	6.12	68.84	96.52
0.58	5.00	60.00	12.00	1.08	48.00	6.12	60.52	100.54
0.67	5.00	60.00	12.00	1.08	48.00	6.12	55.52	104.55
0.75	5.00	60.00	12.00	1.08	48.00	6.12	52.52	108.56
0.83	4.00	48.00			48.00	6.12	50.71	112.56
0.92					48.00	6.12	49.63	116.57
1.00					48.00	6.12	48.98	120.57
1.08					48.00	6.12	48.59	124.57
1.17					48.00	6.12	48.35	128.57
1.25					48.00	6.12	48.21	132.57
1.33					48.00	6.12	48.13	136.57
1.42					48.00	6.12	48.08	140.57
1.50					48.00	6.12	48.05	144.57
1.58					48.00	6.12	48.03	148.57
1.67					48.00	6.12	48.02	152.57
1.75					48.00	6.12	48.01	156.57
1.83					48.00	6.12	48.01	160.57
1.92					48.00	6.12	48.00	164.57
2.00					48.00	6.12	48.00	168.57



Waktu, t(jam)	Hutan Lokasi 4							
	Δh (mm)	f (mm/jam)	f-fc (mm/jam)	log (f- fc)	fc (mm/jam)	K	f (mm/jam)	F (mm/jam)
0.08	33.00	396.00	336.00	2.53	60.00	4.96	282.26	72.09
0.17	14.00	168.00	108.00	2.03	60.00	4.96	207.03	77.31
0.25	10.00	120.00	60.00	1.78	60.00	4.96	157.26	82.46
0.33	5.00	60.00			60.00	4.96	124.34	87.56
0.42	5.00	60.00			60.00	4.96	102.56	92.62
0.50	5.00	60.00			60.00	4.96	88.15	97.67
0.58	5.00	60.00			60.00	4.96	78.62	102.69
0.67	5.00	60.00			60.00	4.96	72.32	107.71
0.75	5.00	60.00			60.00	4.96	68.15	112.73
0.83	5.00	60.00			60.00	4.96	65.39	117.73
0.92					60.00	4.96	63.57	122.74
1.00					60.00	4.96	62.36	127.74
1.08					60.00	4.96	61.56	132.74
1.17					60.00	4.96	61.03	137.75
1.25					60.00	4.96	60.68	142.75
1.33					60.00	4.96	60.45	147.75
1.42					60.00	4.96	60.30	152.75
1.50					60.00	4.96	60.20	157.75
1.58					60.00	4.96	60.13	162.75
1.67					60.00	4.96	60.09	167.75
1.75					60.00	4.96	60.06	172.75
1.83					60.00	4.96	60.04	177.75
1.92					60.00	4.96	60.03	182.75
2.00					60.00	4.96	60.02	187.75



Waktu, t(jam)	Rata-rata Hutan							
	Δh (mm)	f (mm/kam)	f-fc (mm/jam)	log (f-fc)	fc (mm/jam)	k	f (mm/jam)	F (mm/jam)
0.08	34.25	411.00	351.00	2.55	60.00	9.05	225.19	45.86
0.17	21.50	258.00	198.00	2.30	60.00	9.05	137.74	51.11
0.25	15.00	180.00	120.00	2.08	60.00	9.05	96.59	56.23
0.33	10.25	123.00	63.00	1.80	60.00	9.05	77.22	61.28
0.42	7.75	93.00	33.00	1.52	60.00	9.05	68.10	66.31
0.50	5.50	66.00	6.00	0.78	60.00	9.05	63.81	71.32
0.58	5.00	60.00	0.00		60.00	9.05	61.79	76.33
0.67	5.00	60.00	0.00		60.00	9.05	60.84	81.33
0.75	5.00	60.00	0.00		60.00	9.05	60.40	86.33
0.83	5.00	60.00			60.00	9.05	60.19	91.33
0.92					60.00	9.05	60.09	96.33
1.00					60.00	9.05	60.04	101.33
1.08					60.00	9.05	60.02	106.33
1.17					60.00	9.05	60.01	111.33
1.25					60.00	9.05	60.00	116.33
1.33					60.00	9.05	60.00	121.33
1.42					60.00	9.05	60.00	126.33
1.50					60.00	9.05	60.00	131.33
1.58					60.00	9.05	60.00	136.33
1.67					60.00	9.05	60.00	141.33
1.75					60.00	9.05	60.00	146.33
1.83					60.00	9.05	60.00	151.33
1.92					60.00	9.05	60.00	156.33
2.00					60.00	9.05	60.00	161.33



Waktu, t(jam)	Belukar Lokasi 1							
	Δh (mm)	f (mm/jam)	f-fc (mm/jam)	log (f-fc)	fc (mm/jam)	k	f (mm/jam)	F (mm/jam)
0.08	51.00	612.00	552.00	2.74	60.00	4.34	444.65	131.64
0.17	40.00	480.00	420.00	2.62	60.00	4.34	328.04	136.85
0.25	34.00	408.00	348.00	2.54	60.00	4.34	246.77	142.00
0.33	25.00	300.00	240.00	2.38	60.00	4.34	190.15	147.10
0.42	16.00	192.00	132.00	2.12	60.00	4.34	150.69	152.17
0.50	10.00	120.00	60.00	1.78	60.00	4.34	123.20	157.22
0.58	10.00	120.00	60.00	1.78	60.00	4.34	104.04	162.26
0.67	10.00	120.00	60.00	1.78	60.00	4.34	90.69	167.28
0.75	8.00	96.00	36.00	1.56	60.00	4.34	81.38	172.30
0.83	5.00	60.00			60.00	4.34	74.90	177.31
0.92	5.00	60.00			60.00	4.34	70.38	182.32
1.00	5.00	60.00			60.00	4.34	67.24	187.32
1.08	5.00	60.00			60.00	4.34	65.04	192.33
1.17					60.00	4.34	63.51	197.33
1.25					60.00	4.34	62.45	202.33
1.33					60.00	4.34	61.71	207.33
1.42					60.00	4.34	61.19	212.33
1.50					60.00	4.34	60.83	217.33
1.58					60.00	4.34	60.58	222.33
1.67					60.00	4.34	60.40	227.33
1.75					60.00	4.34	60.28	232.33
1.83					60.00	4.34	60.20	237.33
1.92					60.00	4.34	60.14	242.33
2.00					60.00	4.34	60.09	247.33



Waktu, t(jam)	Belukar Lokasi 2							
	Δh (mm)	f (mm/kam)	f-fc (mm/jam)	log (f- fc)	fc (mm/jam)	k	f (mm/jam)	F (mm/jam)
0.08	71.00	852.00	822.00	2.91	30.00	4.51	594.31	183.91
0.17	50.00	600.00	570.00	2.76	30.00	4.51	417.41	186.63
0.25	41.00	492.00	462.00	2.66	30.00	4.51	295.96	189.27
0.33	35.00	420.00	390.00	2.59	30.00	4.51	212.58	191.88
0.42	25.00	300.00	270.00	2.43	30.00	4.51	155.35	194.45
0.50	21.00	252.00	222.00	2.35	30.00	4.51	116.05	196.99
0.58	12.00	144.00	114.00	2.06	30.00	4.51	89.08	199.53
0.67	7.00	84.00	54.00	1.73	30.00	4.51	70.56	202.05
0.75	5.00	60.00	30.00	1.48	30.00	4.51	57.84	204.56
0.83	5.00	60.00	30.00	1.48	30.00	4.51	49.11	207.07
0.92	5.00	60.00	30.00	1.48	30.00	4.51	43.12	209.58
1.00	2.50	30.00			30.00	4.51	39.01	212.09
1.08	2.50	30.00			30.00	4.51	36.18	214.59
1.17					30.00	4.51	34.25	217.09
1.25					30.00	4.51	32.91	219.59
1.33					30.00	4.51	32.00	222.10
1.42					30.00	4.51	31.37	224.60
1.50					30.00	4.51	30.94	227.10
1.58					30.00	4.51	30.65	229.60
1.67					30.00	4.51	30.44	232.10
1.75					30.00	4.51	30.31	234.60
1.83					30.00	4.51	30.21	237.10
1.92					30.00	4.51	30.14	239.60
2.00					30.00	4.51	30.10	242.10



Waktu, t(jam)	Belukar Lokasi 3							
	Δh (mm)	f (mm/kam)	f-fc (mm/jam)	log (f- fc)	fc (mm/jam)	k	f (mm/jam)	F (mm/jam)
0.08	39.00	468.00	444.00	2.65	24.00	5.03	315.94	89.58
0.17	25.00	300.00	276.00	2.44	24.00	5.03	215.95	91.80
0.25	21.00	252.00	228.00	2.36	24.00	5.03	150.21	93.95
0.33	12.00	144.00	120.00	2.08	24.00	5.03	106.98	96.05
0.42	10.00	120.00	96.00	1.98	24.00	5.03	78.56	98.11
0.50	7.00	84.00	60.00	1.78	24.00	5.03	59.88	100.15
0.58	5.00	60.00	36.00	1.56	24.00	5.03	47.59	102.18
0.67	5.00	60.00	36.00	1.56	24.00	5.03	39.51	104.20
0.75	4.00	48.00	24.00	1.38	24.00	5.03	34.20	106.21
0.83	2.50	30.00	6.00		24.00	5.03	30.71	108.22
0.92	2.00	24.00			24.00	5.03	28.41	110.22
1.00					24.00	5.03	26.90	112.23
1.08					24.00	5.03	25.91	114.23
1.17					24.00	5.03	25.25	116.23
1.25					24.00	5.03	24.82	118.23
1.33					24.00	5.03	24.54	120.23
1.42					24.00	5.03	24.36	122.23
1.50					24.00	5.03	24.23	124.23
1.58					24.00	5.03	24.15	126.23
1.67					24.00	5.03	24.10	128.23
1.75					24.00	5.03	24.07	130.23
1.83					24.00	5.03	24.04	132.23
1.92					24.00	5.03	24.03	134.23
2.00					24.00	5.03	24.02	136.23



Waktu, t(jam)	Belukar Lokasi 4							
	Δh (mm)	f (mm/kam)	f-fc (mm/jam)	log (f-fc)	fc (mm/jam)	k	f (mm/jam)	F (mm/jam)
0.08	39.00	468.00	408.00	2.61	60.00	7.45	279.34	59.24
0.17	27.00	324.00	264.00	2.42	60.00	7.45	177.92	64.49
0.25	19.00	228.00	168.00	2.23	60.00	7.45	123.39	69.62
0.33	10.00	120.00	60.00	1.78	60.00	7.45	94.08	74.69
0.42	5.00	60.00			60.00	7.45	78.32	79.73
0.50	5.00	60.00			60.00	7.45	69.85	84.75
0.58	5.00	60.00			60.00	7.45	65.30	89.76
0.67	4.00	48.00			60.00	7.45	62.85	94.77
0.75	5.00	60.00			60.00	7.45	61.53	99.77
0.83	5.00	60.00			60.00	7.45	60.82	104.77
0.92	5.00	60.00			60.00	7.45	60.44	109.78
1.00					60.00	7.45	60.24	114.78
1.08					60.00	7.45	60.13	119.78
1.17					60.00	7.45	60.07	124.78
1.25					60.00	7.45	60.04	129.78
1.33					60.00	7.45	60.02	134.78
1.42					60.00	7.45	60.01	139.78
1.50					60.00	7.45	60.01	144.78
1.58					60.00	7.45	60.00	149.78
1.67					60.00	7.45	60.00	154.78
1.75					60.00	7.45	60.00	159.78
1.83					60.00	7.45	60.00	164.78
1.92					60.00	7.45	60.00	169.78
2.00					60.00	7.45	60.00	174.78



Waktu, t(jam)	Rata-rata Belukar							
	Δh (mm)	f (mm/kam)	f-fc (mm/jam)	log (f-fc)	fc (mm/jam)	k	f (mm/jam)	F (mm/jam)
0.08	41.00	492.00	438.00	2.64	54.00	5.38	333.81	85.31
0.17	32.50	390.00	336.00	2.53	54.00	5.38	232.76	90.04
0.25	27.00	324.00	270.00	2.43	54.00	5.38	168.20	94.69
0.33	19.00	228.00	174.00	2.24	54.00	5.38	126.96	99.28
0.42	14.00	168.00	114.00	2.06	54.00	5.38	100.61	103.84
0.50	10.75	129.00	75.00	1.88	54.00	5.38	83.78	108.38
0.58	8.00	96.00	42.00	1.62	54.00	5.38	73.02	112.90
0.67	6.50	78.00	24.00	1.38	54.00	5.38	66.15	117.42
0.75	5.50	66.00	12.00	1.08	54.00	5.38	61.76	121.93
0.83	4.50	54.00	0.00		54.00	5.38	58.96	126.44
0.92	4.50	54.00	0.00		54.00	5.38	57.17	130.94
1.00	4.50	54.00	0.00		54.00	5.38	56.02	135.44
1.08	4.50	54.00	0.00		54.00	5.38	55.29	139.95
1.17					54.00	5.38	54.83	144.45
1.25					54.00	5.38	54.53	148.95
1.33					54.00	5.38	54.34	153.45
1.42					54.00	5.38	54.22	157.95
1.50					54.00	5.38	54.14	162.45
1.58					54.00	5.38	54.09	166.95
1.67					54.00	5.38	54.06	171.45
1.75					54.00	5.38	54.04	175.95
1.83					54.00	5.38	54.02	180.45
1.92					54.00	5.38	54.01	184.95
2.00					54.00	5.38	54.01	189.45



Waktu, t(jam)	Pertanian lahan kering Lokasi 1							
	Δh (mm)	f (mm/kam)	f-fc (mm/jam)	log (f- fc)	fc (mm/jam)	k	f (mm/jam)	F (mm/jam)
0.08	85.00	1020.00	960.00	2.98	60.00	4.46	721.78	219.34
0.17	56.00	672.00	612.00	2.79	60.00	4.46	516.20	224.55
0.25	39.00	468.00	408.00	2.61	60.00	4.46	374.48	229.70
0.33	25.00	300.00	240.00	2.38	60.00	4.46	276.79	234.80
0.42	22.00	264.00	204.00	2.31	60.00	4.46	209.44	239.87
0.50	16.00	192.00	132.00	2.12	60.00	4.46	163.02	244.92
0.58	11.00	132.00	72.00	1.86	60.00	4.46	131.02	249.95
0.67	10.00	120.00	60.00	1.78	60.00	4.46	108.95	254.98
0.75	10.00	120.00	60.00	1.78	60.00	4.46	93.75	259.99
0.83	9.00	108.00	48.00	1.68	60.00	4.46	83.26	265.00
0.92	6.00	72.00	12.00	1.08	60.00	4.46	76.04	270.01
1.00	5.00	60.00			60.00	4.46	71.05	275.02
1.08	5.00	60.00			60.00	4.46	67.62	280.02
1.17	5.00	60.00			60.00	4.46	65.25	285.02
1.25	5.00	60.00			60.00	4.46	63.62	290.03
1.33	5.00	60.00			60.00	4.46	62.50	295.03
1.42	5.00	60.00			60.00	4.46	61.72	300.03
1.50	5.00	60.00			60.00	4.46	61.19	305.03
1.58					60.00	4.46	60.82	310.03
1.67					60.00	4.46	60.56	315.03
1.75					60.00	4.46	60.39	320.03
1.83					60.00	4.46	60.27	325.03
1.92					60.00	4.46	60.18	330.03
2.00					60.00	4.46	60.13	335.03



Waktu, t(jam)	Pertanian lahan kering Lokasi 2							
	Δh (mm)	f (mm/kam)	f-fc (mm/jam)	log (f-fc)	fc (mm/jam)	k	f (mm/jam)	F (mm/jam)
0.08	37.00	444.00	384.00	2.58	60.00	4.34	327.58	92.88
0.17	30.00	360.00	300.00	2.48	60.00	4.34	246.46	98.10
0.25	25.00	300.00	240.00	2.38	60.00	4.34	189.93	103.24
0.33	23.00	276.00	216.00	2.33	60.00	4.34	150.54	108.35
0.42	14.00	168.00	108.00	2.03	60.00	4.34	123.09	113.42
0.50	10.00	120.00	60.00	1.78	60.00	4.34	103.96	118.47
0.58	10.00	120.00	60.00	1.78	60.00	4.34	90.63	123.50
0.67	10.00	120.00	60.00	1.78	60.00	4.34	81.35	128.53
0.75	10.00	120.00	60.00	1.78	60.00	4.34	74.88	133.54
0.83	10.00	120.00	60.00	1.78	60.00	4.34	70.37	138.55
0.92	7.00	84.00	24.00	1.38	60.00	4.34	67.22	143.56
1.00	5.00	60.00			60.00	4.34	65.03	148.57
1.08	5.00	60.00			60.00	4.34	63.51	153.57
1.17	5.00	60.00			60.00	4.34	62.44	158.57
1.25	5.00	60.00			60.00	4.34	61.70	163.58
1.33					60.00	4.34	61.19	168.58
1.42					60.00	4.34	60.83	173.58
1.50					60.00	4.34	60.58	178.58
1.58					60.00	4.34	60.40	183.58
1.67					60.00	4.34	60.28	188.58
1.75					60.00	4.34	60.19	193.58
1.83					60.00	4.34	60.14	198.58
1.92					60.00	4.34	60.09	203.58
2.00					60.00	4.34	60.07	208.58



Waktu, t(jam)	Peratnian lahan kering Lokasi3							
	Δh (mm)	f (mm/kam)	f-fc (mm/jam)	log (f-fc)	fc (mm/jam)	k	f (mm/jam)	F (mm/jam)
0.08	42.00	504.00	444.00	2.65	60.00	3.40	394.33	134.65
0.17	30.00	360.00	300.00	2.48	60.00	3.40	311.74	139.84
0.25	28.00	336.00	276.00	2.44	60.00	3.40	249.56	144.98
0.33	25.00	300.00	240.00	2.38	60.00	3.40	202.74	150.08
0.42	24.00	288.00	228.00	2.36	60.00	3.40	167.48	155.16
0.50	17.00	204.00	144.00	2.16	60.00	3.40	140.93	160.22
0.58	15.00	180.00	120.00	2.08	60.00	3.40	120.94	165.27
0.67	11.00	132.00	72.00	1.86	60.00	3.40	105.89	170.30
0.75	10.00	120.00	60.00	1.78	60.00	3.40	94.55	175.32
0.83	7.00	84.00	24.00	1.38	60.00	3.40	86.02	180.34
0.92	5.00	60.00			60.00	3.40	79.59	185.36
1.00	5.00	60.00			60.00	3.40	74.75	190.37
1.08	5.00	60.00			60.00	3.40	71.11	195.38
1.17					60.00	3.40	68.36	200.38
1.25					60.00	3.40	66.30	205.39
1.33					60.00	3.40	64.74	210.39
1.42					60.00	3.40	63.57	215.39
1.50					60.00	3.40	62.69	220.40
1.58					60.00	3.40	62.02	225.40
1.67					60.00	3.40	61.52	230.40
1.75					60.00	3.40	61.15	235.40
1.83					60.00	3.40	60.86	240.40
1.92					60.00	3.40	60.65	245.40
2.00					60.00	3.40	60.49	250.40



Waktu, t(jam)	Pertanian lahan kering Lokasi 4							
	Δh (mm)	f (mm/kam)	f-fc (mm/jam)	Log (f-fc)	fc (mm/jam)	k	f (mm/jam)	F (mm/jam)
0.08	47.00	564.00	516.00	2.71	48.00	3.89	421.30	136.09
0.17	29.00	348.00	300.00	2.48	48.00	3.89	318.07	140.29
0.25	24.00	288.00	240.00	2.38	48.00	3.89	243.38	144.44
0.33	17.00	204.00	156.00	2.19	48.00	3.89	189.35	148.54
0.42	14.00	168.00	120.00	2.08	48.00	3.89	150.26	152.62
0.50	10.00	120.00	72.00	1.86	48.00	3.89	121.98	156.67
0.58	7.00	84.00	36.00	1.56	48.00	3.89	101.52	160.71
0.67	5.00	60.00	12.00	1.08	48.00	3.89	86.72	164.74
0.75	5.00	60.00	12.00	1.08	48.00	3.89	76.01	168.76
0.83	5.00	60.00	12.00	1.08	48.00	3.89	68.27	172.78
0.92	5.00	60.00	12.00	1.08	48.00	3.89	62.66	176.79
1.00	5.00	60.00	12.00	1.08	48.00	3.89	58.61	180.80
1.08	5.00	60.00	12.00	1.08	48.00	3.89	55.67	184.80
1.17	5.00	60.00	12.00	1.08	48.00	3.89	53.55	188.81
1.25	4.00	48.00			48.00	3.89	52.02	192.81
1.33					48.00	3.89	50.91	196.81
1.42					48.00	3.89	50.10	200.81
1.50					48.00	3.89	49.52	204.81
1.58					48.00	3.89	49.10	208.82
1.67					48.00	3.89	48.80	212.82
1.75					48.00	3.89	48.58	216.82
1.83					48.00	3.89	48.42	220.82
1.92					48.00	3.89	48.30	224.82
2.00					48.00	3.89	48.22	228.82



Waktu, t(jam)	Rata-rata Pertanian lahan kering							
	Δh (mm)	f (mm/kam)	f-fc (mm/jam)	log (f-fc)	fc (mm/jam)	k	f (mm/jam)	F (mm/jam)
0.08	52.75	633.00	573.00	2.76	60.00	4.35	458.72	135.97
0.17	36.25	435.00	375.00	2.57	60.00	4.35	337.45	141.18
0.25	29.00	348.00	288.00	2.46	60.00	4.35	253.07	146.33
0.33	22.50	270.00	210.00	2.32	60.00	4.35	194.35	151.43
0.42	18.50	222.00	162.00	2.21	60.00	4.35	153.49	156.51
0.50	13.25	159.00	99.00	2.00	60.00	4.35	125.05	161.55
0.58	10.75	129.00	69.00	1.84	60.00	4.35	105.27	166.59
0.67	9.00	108.00	48.00	1.68	60.00	4.35	91.50	171.61
0.75	8.75	105.00	45.00	1.65	60.00	4.35	81.92	176.63
0.83	7.75	93.00	33.00	1.52	60.00	4.35	75.25	181.64
0.92	5.75	69.00	9.00	0.95	60.00	4.35	70.61	186.65
1.00	5.00	60.00			60.00	4.35	67.39	191.66
1.08	5.00	60.00			60.00	4.35	65.14	196.66
1.17	5.00	60.00			60.00	4.35	63.58	201.66
1.25	5.00	60.00			60.00	4.35	62.49	206.66
1.33					60.00	4.35	61.73	211.67
1.42					60.00	4.35	61.20	216.67
1.50					60.00	4.35	60.84	221.67
1.58					60.00	4.35	60.58	226.67
1.67					60.00	4.35	60.41	231.67
1.75					60.00	4.35	60.28	236.67
1.83					60.00	4.35	60.20	241.67
1.92					60.00	4.35	60.14	246.67
2.00					60.00	4.35	60.10	251.67



Lampiran 2. Dokumentasi Penelitian



Gambar Lampiran 1. Penggunaan Lahan (a) Hutan, (b) Belukar dan (c) Pertanian Lahan Kering



Gambar Lampiran 2. Pemasangan *Double Ring Infiltrometer*



Lampiran 3. Pengamatan Infiltrasi pada Penggunaan Lahan (a) Hutan, (b) Belukar dan (c) Pertanian lahan kering





Gambar Lampiran 4. Pengambilan Sampel Tanah



Gambar Lampiran 5. Pengukuran Kadar Air Awal



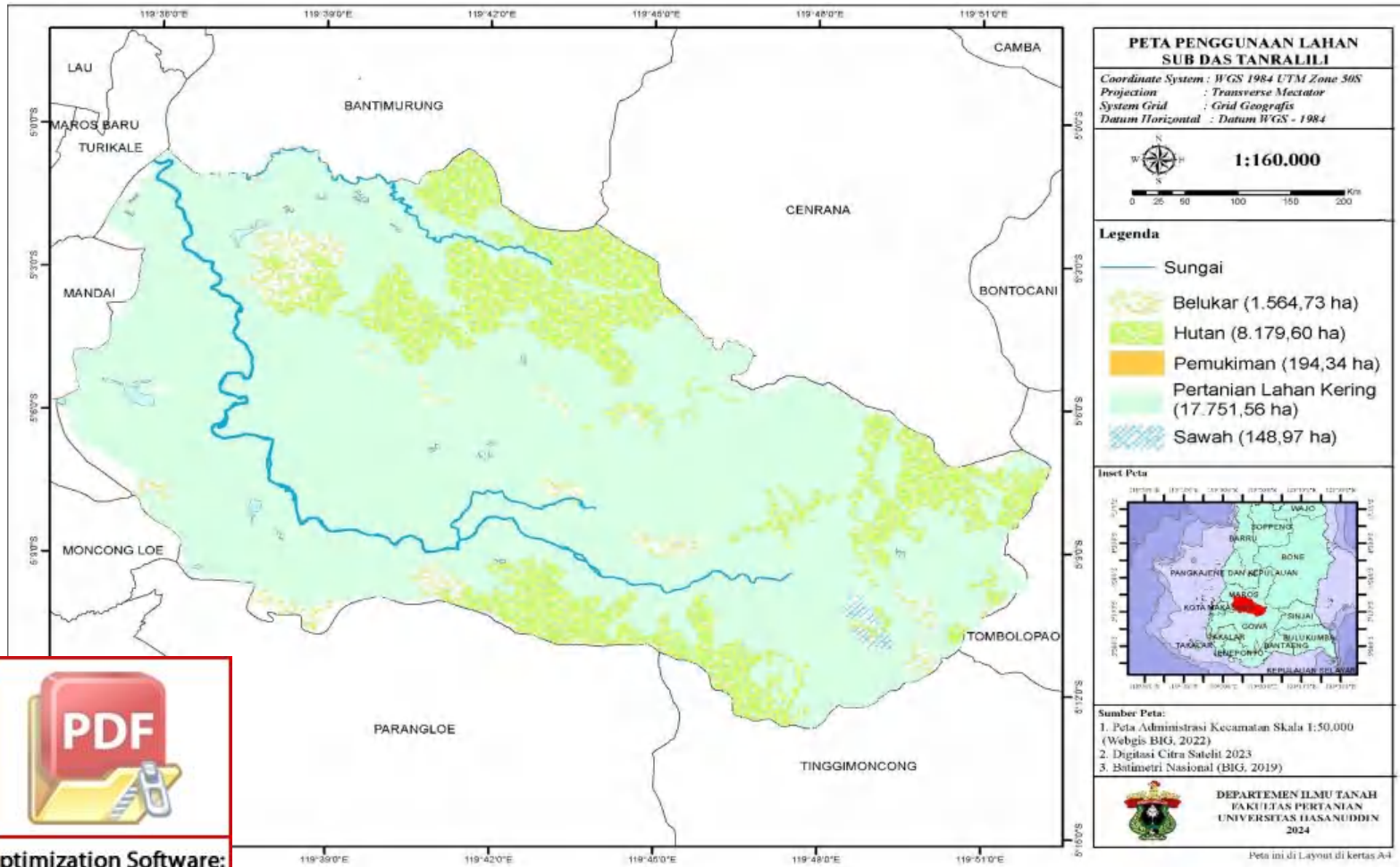
Gambar Lampiran 6. Analisis Sifat Kimia Tanah



Gambar Lampiran 7. Analisis Sifat Fisik tanah



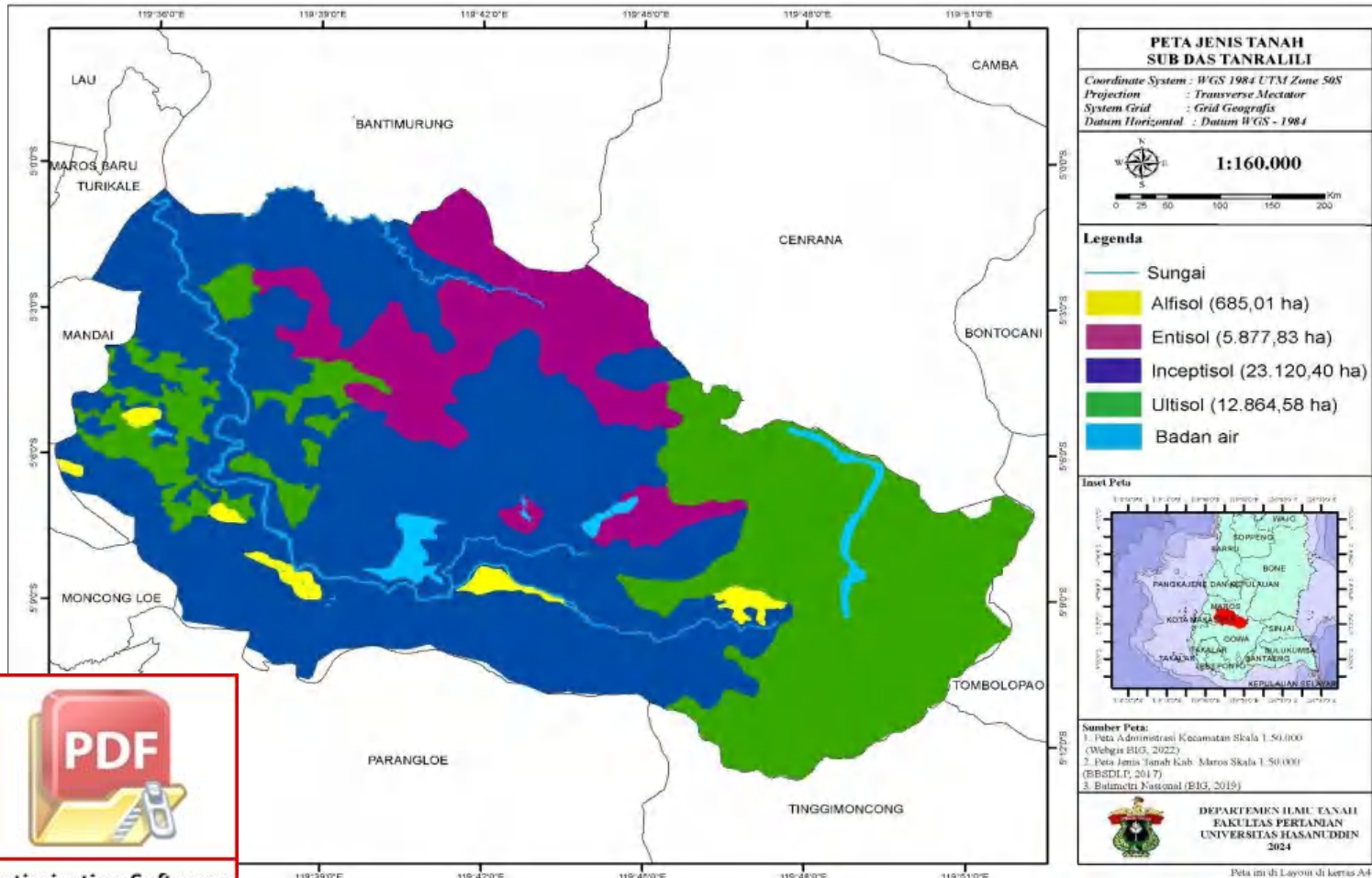
Lampiran 3. Peta penggunaan lahan sub DAS Tanralili



PDF

Optimization Software:
www.balesio.com

Lampiran 4. Peta jenis tanah sub DAS Tanralili



Optimization Software:
www.balesio.com