

Daftar Pustaka

- Bonnet, M., Lagier, J. C., Raoult, D., & Khelaifia, S. (2020). Bacterial culture through selective and non-selective conditions: the evolution of culture media in clinical microbiology. *New Microbes and New Infections*, 34. <https://doi.org/10.1016/j.nmni.2019.100622>
- Carreón-Rodríguez, O. E., Gosset, G., Escalante, A., & Bolívar, F. (2023). Glucose Transport in *Escherichia coli*: From Basics to Transport Engineering. *Microorganisms*, 11(6). <https://doi.org/10.3390/microorganisms11061588>
- Cereda, M. P., & Mattos, M. C. Y. (1996). Linamarin - The toxic compound of cassava. *Journal of Venomous Animals and Toxins*, 2(1), 6–12. <https://doi.org/10.1590/s0104-79301996000100002>
- Cheng, F., Chen, H., Lei, N., Zhang, M., & Wan, H. (2019). Effects of Carbon and Nitrogen Sources on Activity of Cell Envelope Proteinase Produced by *Lactobacillus plantarum* LP69. *Acta Universitatis Cibiniensis. Series E: Food Technology*, 23(1), 11–18. <https://doi.org/10.2478/aucft-2019-0002>
- El-Naeem, A., Abdalla, S., Ahmed, I., & Alhassan, G. (2022). Phytochemicals and in silico investigations of Sudanese roselle. *South African Journal of Science*, 118(112), 1–7. <https://doi.org/10.17159/sajs.2022/10383>
- Flamholz, A., Noor, E., Bar-Even, A., Liebermeister, W., & Milo, R. (2013). Glycolytic strategy as a tradeoff between energy yield and protein cost. *Proceedings of the National Academy of Sciences of the United States of America*, 110(24), 10039–10044. <https://doi.org/10.1073/pnas.1215283110>
- Gaillard, T. (2018). Evaluation of AutoDock and AutoDock Vina on the CASF-2013 Benchmark [Research-article]. *Journal of Chemical Information and Modeling*, 58(8), 1697–1706. <https://doi.org/10.1021/acs.jcim.8b00312>
- Garnett, J. P., Braun, D., McCarthy, A. J., Farrant, M. R., Baker, E. H., Lindsay, J. A., & Baines, D. L. (2014). Fructose transport-deficient *Staphylococcus aureus* reveals important role of epithelial glucose transporters in limiting sugar-driven bacterial growth in airway surface liquid. *Cellular and Molecular Life Sciences*, 71(23), 4665–4673. <https://doi.org/10.1007/s00018-014-1635-y>
- Han, X. Y., Kamana, M., & Rolston, K. V. I. (2006). Viridans streptococci isolated by culture from blood of cancer patients: Clinical and microbiologic analysis of 50 cases. *Journal of Clinical Microbiology*, 44(1), 160–165. <https://doi.org/10.1128/JCM.44.1.160-165.2006>
- Jorgensen, J. H., & Ferraro, M. J. (2000). Antimicrobial susceptibility testing: Special needs for fastidious organisms and difficult-to-detect resistance mechanisms. *Clinical Infectious Diseases*, 30(5), 799–808. <https://doi.org/10.1086/313788>
- Konzock, O., Zaghen, S., Fu, J., & Kerkhoven, E. J. (2022). Urea is a drop-in nitrogen source alternative to ammonium sulphate in *Yarrowia lipolytica*. *iScience*, 25(12), 105703. <https://doi.org/10.1016/j.isci.2022.105703>
- Liu, C. Y., Amani, R., Sulaiman, S., Mahmood, K., Ariffin, F., & Mohammadi Nafchi, A. (2022). Formulation and characterization of physicochemical, functional, morphological, and antioxidant properties of cassava-based rice analogue. *Food Science and Nutrition*, 10(5), 1626–1637. <https://doi.org/10.1002/fsn3.2785>
- Mobed, A., Baradaran, B., Guardia, M. de la, Agazadeh, M., Hasanzadeh, M., Rezaee, M. A., Mosafer, J., Mokhtarzadeh, A., & Hamblin, M. R. (2019). Advances in detection of fastidious bacteria: From microscopic observation to molecular biosensors. *TrAC - Trends in Analytical Chemistry*, 113, 157–171. <https://doi.org/10.1016/j.trac.2019.02.012>

- Moye, Z. D., Zeng, L., & Burne, R. A. (2014). Fueling the caries process: Carbohydrate metabolism and gene regulation by *Streptococcus mutans*. *Journal of Oral Microbiology*, 6(1). <https://doi.org/10.3402/jom.v6.24878>
- O'Connor, M. J., Bartler, A. V., Ho, K. C., Zhang, K., Casas Fuentes, R. J., Melnick, B. A., Huffman, K. N., Hong, S. J., & Galiano, R. D. (2024). Understanding *Staphylococcus aureus* in hyperglycaemia: A review of virulence factor and metabolic adaptations. *Wound Repair and Regeneration*, April, 1–10. <https://doi.org/10.1111/wrr.13192>
- Pantsar, T., & Poso, A. (2018). Binding affinity via docking: Fact and fiction. *Molecules*, 23(8), 1DUMMY. <https://doi.org/10.3390/molecules23081899>
- Udaondo, Z., Ramos, J. L., Segura, A., Krell, T., & Daddaoua, A. (2018). Regulation of carbohydrate degradation pathways in *Pseudomonas* involves a versatile set of transcriptional regulators. *Microbial Biotechnology*, 11(3), 442–454. <https://doi.org/10.1111/1751-7915.13263>
- Vartoukian, S. R., Adamowska, A., Lawlor, M., Moazzez, R., Dewhirst, F. E., & Wade, W. G. (2016). In vitro cultivation of “unculturable” oral bacteria, facilitated by community culture and media supplementation with siderophores. *PLoS ONE*, 11(1), 1–19. <https://doi.org/10.1371/journal.pone.0146926>
- Wang, Y., Wu, J., Lv, M., Shao, Z., Hungwe, M., Wang, J., Bai, X., Xie, J., Wang, Y., & Geng, W. (2021). Metabolism Characteristics of Lactic Acid Bacteria and the Expanding Applications in Food Industry. *Frontiers in Bioengineering and Biotechnology*, 9(May), 1–19. <https://doi.org/10.3389/fbioe.2021.612285>

Lampiran

Hasil perhitungan jumlah koloni

a. Bakteri *S. aureus*

Hasil ANOVA

Perlakuan	Jumlah koloni 10 ⁻⁵			Rata-rata	CFU/ml	Jumlah koloni 10 ⁻⁶			Rata-rata	CFU/ml
	1	2	3			1	2	3		
NA	68	142	106	105,3 ± 37	10,5 X 10 ⁶	6	2	8		5,3 X 10 ⁶
Tepung	50	81	84	71 ± 18,8	7,1 X 10 ⁶	13	10	9	11 ± 2	11 X 10 ⁶
Tanpa Tepung	46	141	88	92 ± 47,6	9,2 X 10 ⁶	6	2	4	4 ± 2	4 X 10 ⁶

ANOVA

		Sum of Squares	df	Mean Square	F	Sig.
dilution5	Between Groups	1720.222	2	860.111	.647	.557
	Within Groups	7980.000	6	1330.000		
	Total	9700.222	8			
dilution6	Between Groups	74.667	2	37.333	6.340	.033
	Within Groups	35.333	6	5.889		
	Total	110.000	8			

b. Bakteri *P. aeruginosa*

Perlakuan	Jumlah koloni 10 ⁻⁵			Rata-rata	CFU/ml	Jumlah koloni 10 ⁻⁶			Rata-rata	CFU/ml
	1	2	3			1	2	3		
NA	64	129	98	97 ± 32,5	9,7 x 10 ⁶	10	6	12	9,3 ± 3	9,3 x 10 ⁶
Tepung	31	105	92	76 ± 39,5	7,6 x 10 ⁶	4	13	7	8 ± 4,5	8 x 10 ⁶
Tanpa Tepung	25	67	54	48,7 ± 21,5	4,8 x 10 ⁶	9	13	8	10 ± 2,6	10 x 10 ⁶

Hasil ANOVA

ANOVA

		Sum of Squares	df	Mean Square	F	Sig.
dilution5	Between Groups	3524.222	2	1762.111	1.716	.257
	Within Groups	6160.667	6	1026.778		
	Total	9684.889	8			
dilution6	Between Groups	6.222	2	3.111	.250	.787
	Within Groups	74.667	6	12.444		
	Total	80.889	8			

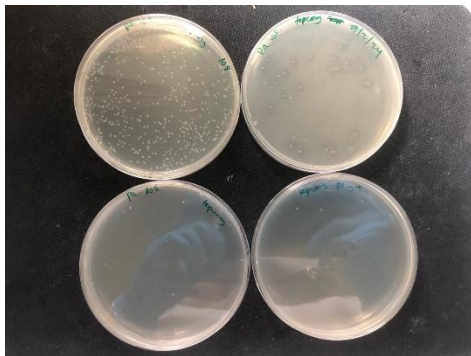
c. Bakteri *S. mitis*

Perlakuan	Jumlah koloni 10 ⁻⁵			Rata-rata	CFU/ml	Jumlah koloni 10 ⁻⁶			Rata-rata	CFU/ml
	1	2	3			1	2	3		
BA	103	121	110	111,3 ± 9	11,1 x 10 ⁶	14	12	15	13,7 ± 1,5	13 x 10 ⁶
Tepung	9	20	12	13,7±5,6	1,3 x 10 ⁶	1	2	1	1,3 ± 0,5	1 x 10 ⁶
Tepung + Blood	59	76	88	74,3 ± 14,5	7,4 x 10 ⁶	3	4	2	3 ± 1	3 x 10 ⁶

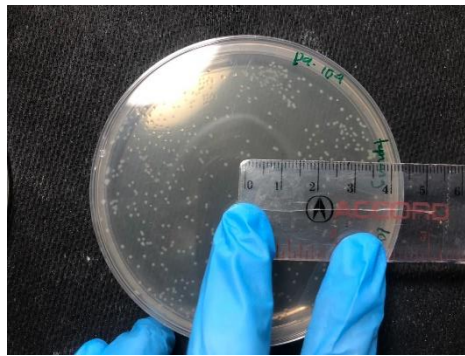
ANOVA

		Sum of Squares	df	Mean Square	F	Sig.
dilution5	Between Groups	14588.222	2	7294.111	66.918	.000
	Within Groups	654.000	6	109.000		
	Total	15242.222	8			
dilution6	Between Groups	268.667	2	134.333	109.909	.000
	Within Groups	7.333	6	1.222		
	Total	276.000	8			

Hasil biakan pada media tepung singkong
bakteri *P. aeruginosa*

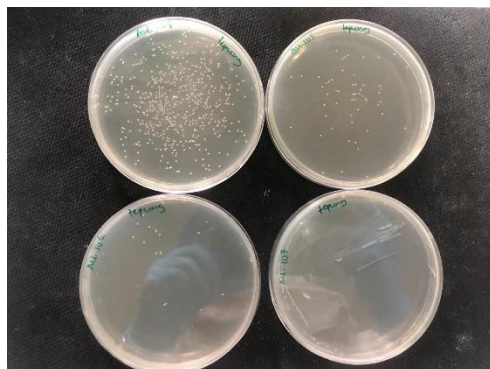


Koloni bakteri pada pengenceran
 10^{-5} hingga 10^{-7}



Ukuran besar koloni pada media
tepung singkong

bakteri *S. aureus*

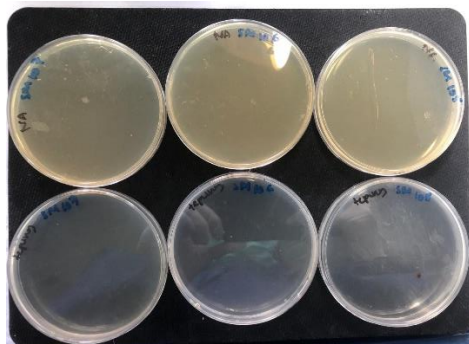


Koloni bakteri pada pengenceran
 10^{-5} hingga 10^{-7}



Ukuran besar koloni pada media
tepung singkong

Bakteri *S. mitis*



Koloni bakteri pada pengenceran
 10^{-5} hingga 10^{-7}



Perhitungan koloni pada koloni
counter