

DAFTAR PUSTAKA

- ASTM D3173M – 17a. 2017. *Standard Test Method for Moisture in the Analysis Sample of Coal and Coke*. ASTM Book of Standards. USA: ASTM International, p. 1 – 4.
- ASTM D3174 – 12. 2018. *Standard Test Method for Ash in the Analysis Sample of Coal and Coke from Coal*. ASTM Book of Standards. USA: ASTM International, p. 1 – 6.
- ASTM D3175 – 20. 2020. *Standard Test Method for Volatile Matter in the Analysis Sample of Coal and Coke*. ASTM Book of Standards. USA: ASTM International, p. 1 – 14.
- ASTM D388. 2019. *Standard Classification of Coals by Rank*. ASTM Book of Standards. USA: ASTM International, p. 1 – 6.
- ASTM D4239 – 18. 2018. *Standard Test Method for Sulfur in the Analysis Sample of Coal and Coke Using High-Temperature Tube Furnace Combustion*. ASTM Book of Standards. USA: ASTM International, p. 1 – 8.
- ASTM D5865. 2010. *Standard Test Method for Gross Calorific Value of Coal and Coke*. ASTM Book of Standards. USA: ASTM International, p. 1 – 19.
- Avicenna, M.F., Sufriadin, Budiman, A.A. dan Widodo, S., 2019. *Analisis Mineralogi dan Kualitas Batubara Desa Kadingeh, Kecamatan Baraka, Kabupaten Enrekang, Sulawesi Selatan*. Jurnal Geomine, Vol. 7 (2), pp. 114-123.
- Chou, C.L., 2012, *Sulfur in Coals: A Review of Geochemistry and Origins*: International Journal of Coal Geology, vol. 100 (2012), p. 1-13.
- Direktorat Jenderal Mineral dan Batubara. 2021. *Road Map Pengembangan dan Pemanfaatan Batubara*. Jakarta: Kementerian Energi dan Sumber Daya Mineral. p. 199.
- Divo, M., Ansosry. 2020, *Optimasi Pencampuran Batubara Beda Kualitas Dengan Metode Trial And Error untuk Memenuhi Kriteria Permintaan Konsumen di CV. Bara Mitra Kencana Kota Sawahlunto Sumatera Barat*, Jurnal Bina Tambang, Vol. 5, No.1, pp. 51.
- Firth, B, D, L., 1998. *Trace Element in Coal Preparation*. CSIRO Division of Coal and Energy Technology. Vol 19, pp. 297-317.
- Finkelman, R.B., Orem, W., Castranova, V., Tatu, C.A., Belkin, H.E., Zheng, B., Lerch, H.B., Maharaj, S.V., Bates, A.L., 2002. *Health impacts of coal and coal use: possible solutions*. Int. J. Coal Geol. 50, 425–443.
- Flores, R. M. 2014. *Coal and Coalbed Gas: Fueling the future*. Waltham USA.

- Gluskoter, H., 1975. *Mineral Matter and Trace Elements in Coal*. Environ Earth Sci, Vol 10, pp. 01-41.
- Katoh, K. 2011. *Thermal Coal and Sub-Bituminous Coal*. Jakarta: Indonesian Coal Mining Association, p. 126.
- Lazaro, B.B., 2015, *Halloysite and Kaolinite: Two Clay Minerals with Geological and Technological importance*, Rev. Real Academia de Ciencias, Zaragoza, vol. 70, p. 7- 38.
- Lestari, D. S., Asy'ari, M. A., dan Hidayatullah, R. 2016. *Geokimia Batubara Untuk Beberapa Industri*. Jurnal Poros Teknik Vol. 8 No.1, pp. 1 – 54.
- Loye, H. 2013. *X-ray Diffraction How It Works*. University of South Carolina. Caroline.
- Muchjidin, 2006. *Pengendalian Mutu Dalam Industri Batu Bara*. Bandung: ITB Press.
- Rao, D., Subba, V., and Gouricharan, T. 2016. *Coal Processing and Utilization*. CRC Press, Taylor & Francis Group. London. p 160, 162, 171.
- Sanwani, E., Ibrahim, A., Sule D., dan Handayani, I. 1998. *pencucian Batubara, Ciloto: Diklat Pencucian Batubara*, p. II-36-II-41, V-1- V-7.
- Speight, J. G. 2005. *Handbook of Coal Analysis*. A John Wiley & Sons. Inc, Publication. USE.
- Stach, E., Mackowsky, M., T., Teichmüller, M., Taylor, G., H., Chandra, D., and Teichmüller, R., 1982. *Coal Petrology*, Gebruder Borntraeger. Berlin: Stuttgart, p. 533.
- Sukandarrumidi. 1995. *Batubara dan Gambut*. Universitas Gajah Mada: Yogyakarta.
- Swaine, D.J. 1990. *Trace elements in coal*. Butterworth, London.
- Taylor, G.H., TeichmuellerM., Davis A., Diessel, C, F. K., Littje, R., and Robert, P. 1998. *Organic petrologi*. Gebrueder Borntraeger, Berlin, Stuttgart, 704 p.
- Tirasonjaya, F. 2006. *Ilmu batubara*. Wordpress.com/2006.
- Ward, C.R., 1986. *Review of mineral matter in coal*. Aust. Coal Geol., 87–110.
- Ward, R, C., 2016. *Analysis origin and significance of mineral matter in coal: An update review*. International Journal of Coal Geology, Vol 165, pp. 1-27.
- Widodo, S., Oschmann, W., Bechtel, A., Sachsenhofer, R.F., Anggayana, K., and Puettmann, W., 2010. *Distribution of Sulfur and Pyrite in Coal Seam from Kutai Basin (East Kalimantan, Indonesia): Implication for*

Paleoenvironmental Conditions. International Journal of Coal Geology, Vol. 81, pp. 151 – 162.

- Widodo, S., Sufriadin, Thamrin, M., Wahyufirmansyah, and Jafar, N. 2020. *Mineralogy and quality of Banti Coal, Baraka District, Enrekang Regency, South Sulawesi Province, Indonesia*. Earth and Environmental Science 473, pp. 1 – 9.
- Wood, G.H., Khen, T.M., Carter, M.D., and Culberson, W.C. 1983. *Coal Resource Classification System of The U.S Geological Survey*, United State Departement of The Interior USA.
- Xiuyi, T., 2009, *Mineral Matter in Coal: Encyclopedia of Life Support Systems (EOLSS), Coal, Oil Shale, Natural Bitumen, Heavy Oil and Peat*, vol.1., p. 1-10.

LAMPIRAN

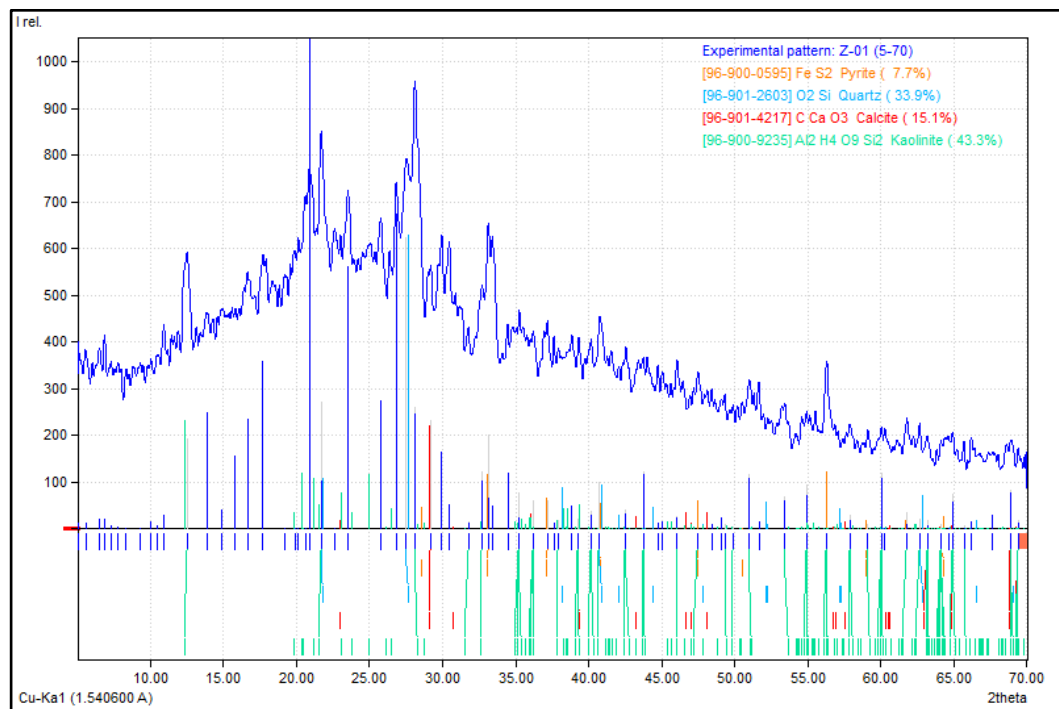
LAMPIRAN 1. PERLAKUAN SAMPEL

Tabel 10 Perlakuan Sampel

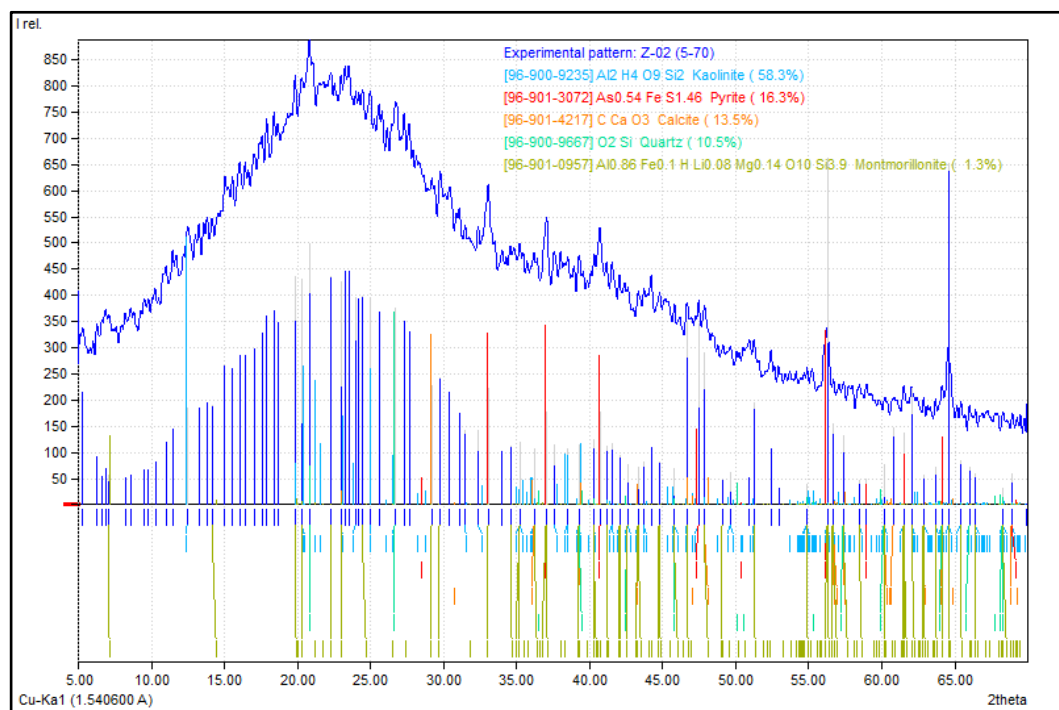
Sampel	Proksimat	Total Sulfur	XRD	Nilai Kalori	Mikroskopis
Z-01	√	√	√	√	
Z-02	√	√	√	√	√
Z-03	√	√	√	√	

LAMPIRAN 2. HASIL ANALISIS XRD

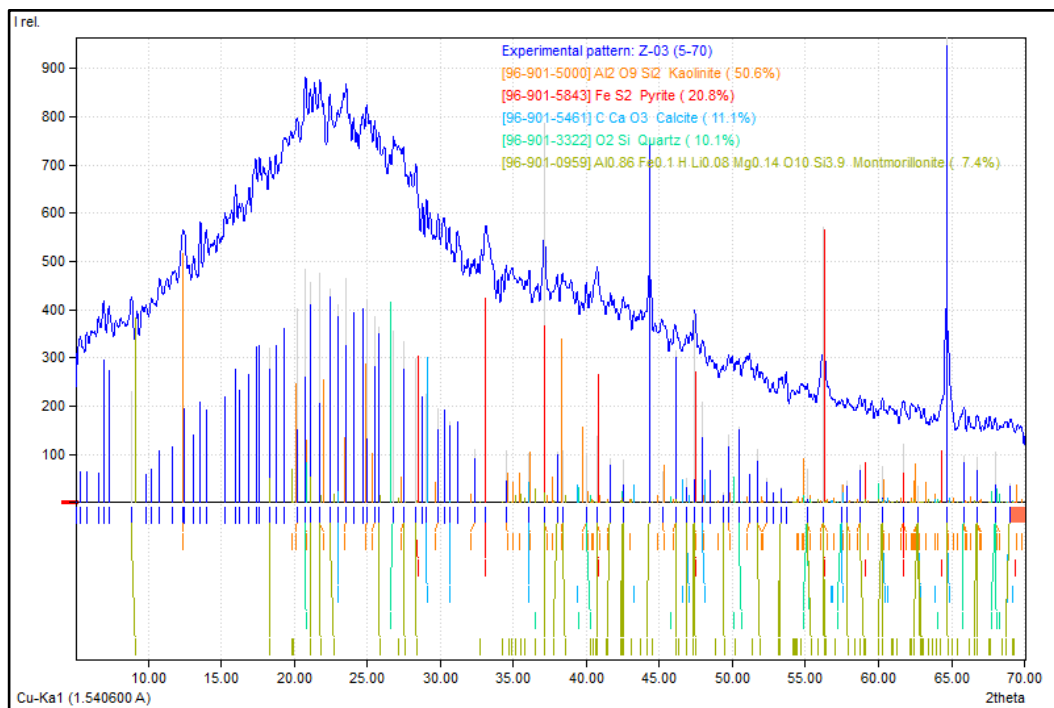
1. Conto Z-01



2. Conto Z-02



3. Conto Z-03



LAMPIRAN 3. HASIL ANALISIS NILAI KALORI



**LABORATORIUM MOTOR BAKAR
DEPARTEMEN TEKNIK MESIN
UNIVERSITAS HASANUDDIN
FAKULTAS TEKNIK**

Jalan Poros Malino Km.6 Bontomarannu (92171) Gowa Sulawesi Selatan
Telp. (0411) 586015, 586162 Fax (0411) 586015

SURAT KETERANGAN HASIL ANALISIS SAMPEL

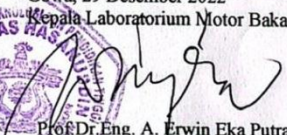
Nomor : 35/LMB-FT/UH/2022

Pengirim : A. Muhammad Djunaedi
Parameter Uji : Nilai Kalor
Peralatan : Bomb Kalorimeter
Jenis Sampel : Batu Bara
Tanggal Uji : 19 - 21 Desember 2022

No.	Kode Sampel	Nilai Kalor (Kalori/Gram)
1.	Z1	3.608 (15.098 kJ/kg)
2.	Z2	3765 (15.755 kJ/kg)
3.	Z3	3568 (14.932 kJ/kg)

Gowa, 29 Desember 2022

Kepala Laboratorium Motor Bakar,


Prof. Dr. Eng. A. Erwin Eka Putra, S.T., M.T.
NIP. 19711221 199802 1 001



LAMPIRAN 4. HASIL ANALISIS TOTAL SULFUR

