

## DAFTAR PUSTAKA

- Achmadi, U. F. (2012) 'Manajemen Penyakit Berbasis Wilayah', *Kesmas: National Public Health Journal*, 3(4), p. 147. doi: 10.21109/kesmas.v3i4.217.
- Arafat, S. M. Y. *et al.* (2020) 'Psychological underpinning of panic buying during pandemic (COVID-19)', *Psychiatry Research*. Elsevier Ireland Ltd, p. 113061. doi: 10.1016/j.psychres.2020.113061.
- Ardiansyah and Kardono (2017) 'Sistem Informasi Geografis (Sig) Pemetaan Jaringan Pipa Dan Titik Properti Pelanggan Di Pt Aetra Air Tangerang', *Jurnal Ilmiah FIFO*, 9(1), p. 81. doi: 10.22441/fifo.v9i1.1445.
- Arentz, M. *et al.* (2020) 'Characteristics and Outcomes of 21 Critically Ill Patients with COVID-19 in Washington State', *JAMA - Journal of the American Medical Association*. American Medical Association, pp. 1612–1614. doi: 10.1001/jama.2020.4326.
- Bai, Y. *et al.* (2020) 'Presumed Asymptomatic Carrier Transmission of COVID-19', *JAMA - Journal of the American Medical Association*. American Medical Association, pp. 1406–1407. doi: 10.1001/jama.2020.2565.
- Biswas, M. *et al.* (2021) 'Association of Sex, Age, and Comorbidities with Mortality in COVID-19 Patients: A Systematic Review and Meta-Analysis', *Intervirolgy*, 64(1), pp. 36–47. doi: 10.1159/000512592.
- Cai, H. (2020) 'Sex difference and smoking predisposition in patients with COVID-19', *The Lancet Respiratory Medicine*. Lancet Publishing Group, p. e20. doi: 10.1016/S2213-2600(20)30117-X.
- CDC China (2020) [*The epidemiological characteristics of an outbreak of 2019 novel coronavirus diseases (COVID-19) in China*] - PubMed. Available at: <https://pubmed.ncbi.nlm.nih.gov/32064853/> (Accessed: 17 May 2021).
- Cen, Y. *et al.* (2020) 'Risk factors for disease progression in patients with mild to moderate coronavirus disease 2019—a multi-centre observational study', *Clinical Microbiology and Infection*, 26(9), pp. 1242–1247. doi: 10.1016/j.cmi.2020.05.041.
- Chen, H. *et al.* (2020) 'Clinical characteristics and intrauterine vertical transmission potential of COVID-19 infection in nine pregnant women: a retrospective review of medical records', *The Lancet*, 395(10226), pp. 809–815. doi: 10.1016/S0140-6736(20)30360-3.
- Cordes, J. and Castro, M. C. (2020) 'Spatial analysis of COVID-19 clusters and contextual factors in New York City', *Spatial and Spatio-temporal Epidemiology*, 34, p. 100355. doi: 10.1016/J.SSTE.2020.100355.
- Dinas Kesehatan Kota Makassar (2021) *Info Penanggulangan COVID-19 Kota Makassar*. Available at: <https://infocorona.makassar.go.id/> (Accessed: 17 May 2021).

- Dinas Kesehatan Sulawesi Selatan (2020) *Sulsel Tanggap COVID-19, Dinas Kesehatan Provinsi Sulawesi Selatan*. Available at: <https://covid19.sulselprov.go.id/> (Accessed: 17 May 2021).
- van Doremalen, N. *et al.* (2020) ‘Aerosol and Surface Stability of SARS-CoV-2 as Compared with SARS-CoV-1’, *New England Journal of Medicine*, 382(16), pp. 1564–1567. doi: 10.1056/nejmc2004973.
- Elviani, R. *et al.* (2021) ‘GAMBARAN USIA PADA KEJADIAN COVID-19’, *JAMBI MEDICAL JOURNAL ‘Jurnal Kedokteran dan Kesehatan’*, 9(2), pp. 204–209. doi: 10.22437/JMJ.V9I1.11263.
- Escalera-Antezana, J. P. *et al.* (2020) ‘Risk factors for mortality in patients with coronavirus disease 2019 (COVID-19) in Bolivia: An analysis of the first 107 confirmed cases’, *Infezioni in Medicina*, 28(2), pp. 238–242.
- FDA (2021) ‘Xpert ® Xpress SARS-CoV-2’, *Food And Drug Administration*, (January).
- Feldman, C. and Anderson, R. (2013) ‘Cigarette smoking and mechanisms of susceptibility to infections of the respiratory tract and other organ systems’, *Journal of Infection*. *J Infect*, pp. 169–184. doi: 10.1016/j.jinf.2013.05.004.
- Friis, R. H. (2018) *Epidemiology 101, Jones & Bartlett Learning*. doi: 10.1016/j.amepre.2008.06.007.
- Gilbert, M. *et al.* (2020) ‘Preparedness and vulnerability of African countries against importations of COVID-19: a modelling study’, *The Lancet*, 395(10227), pp. 871–877. doi: 10.1016/S0140-6736(20)30411-6.
- Gorbalenya, A. E. *et al.* (2020) ‘Severe acute respiratory syndrome-related coronavirus: The species and its viruses – a statement of the Coronavirus Study Group’, *bioRxiv*. bioRxiv, p. 2020.02.07.937862. doi: 10.1101/2020.02.07.937862.
- Gössling, S., Scott, D. and Hall, C. M. (2020) ‘Pandemics, tourism and global change: a rapid assessment of COVID-19’, *Journal of Sustainable Tourism*, pp. 1–20. doi: 10.1080/09669582.2020.1758708.
- Guo, L. *et al.* (2020) ‘Profiling early humoral response to diagnose novel coronavirus disease (COVID-19)’, *Clinical Infectious Diseases*, 71(15), pp. 778–785. doi: 10.1093/cid/ciaa310.
- Han, Y. and Yang, H. (2020) ‘The transmission and diagnosis of 2019 novel coronavirus infection disease (COVID-19): A Chinese perspective’, *Journal of Medical Virology*, 92(6), pp. 639–644. doi: 10.1002/jmv.25749.
- Hassannia, L. *et al.* (2020) ‘Anxiety and Depression in Health Workers and General Population during COVID-19 Epidemic in IRAN: A Web-Based Cross-Sectional Study’, *medRxiv*. medRxiv, p. 2020.05.05.20089292. doi: 10.1101/2020.05.05.20089292.

- Hidayani, W. R. (2020) 'Faktor Faktor Risiko Yang Berhubungan Dengan COVID 19 : Literature Review', *Jurnal Untuk Masyarakat Sehat (JUKMAS)*, 4(2), pp. 120–134. Available at: <http://ejournal.urindo.ac.id/index.php/jukmas/article/view/1015> (Accessed: 20 May 2021).
- Huang, C. *et al.* (2020) 'Clinical features of patients infected with 2019 novel coronavirus in Wuhan, China', *The Lancet*, 395(10223), pp. 497–506. doi: 10.1016/S0140-6736(20)30183-5.
- Kadi, N. and Khelfaoui, M. (2020) 'Population density, a factor in the spread of COVID-19 in Algeria: statistic study', *Bulletin of the National Research Centre*, 44(1), pp. 1–7. doi: 10.1186/s42269-020-00393-x.
- Kam, K. Q. *et al.* (2020) 'A well infant with coronavirus disease 2019 with high viral load', *Clinical Infectious Diseases*, 71(15), pp. 847–849. doi: 10.1093/cid/ciaa201.
- Kampf, G. *et al.* (2020) 'Persistence of coronaviruses on inanimate surfaces and their inactivation with biocidal agents', *Journal of Hospital Infection*. W.B. Saunders Ltd, pp. 246–251. doi: 10.1016/j.jhin.2020.01.022.
- Kemendes RI (2020a) 'Keputusan Menteri Kesehatan Republik Indonesia Nomor Hk.01.07/Menkes/446/2020 Tentang Petunjuk Teknis Klaim Penggantian Biaya Pelayanan Pasien Penyakit Infeksi Emerging Tertentu Bagi Rumah Sakit Yang Menyelenggarakan Pelayanan Corona Virus Disease 2019 (C)', *Keputusan Menteri Kesehatan Republik Indonesia*, 1(1), pp. 4–23. Available at: <https://wellness.journalpress.id/wellness/article/view/21026>.
- Kemendes RI (2020b) 'Pedoman Pencegahan dan Pengendalian Corona Virus deases (Covid-19)', *Kemendrian Kesehatan Republik Indonesia*, 5, p. 178. Available at: [https://covid19.go.id/storage/app/media/Protokol/REV-05\\_Pedoman\\_P2\\_COVID-19\\_13\\_Juli\\_2020.pdf](https://covid19.go.id/storage/app/media/Protokol/REV-05_Pedoman_P2_COVID-19_13_Juli_2020.pdf).
- Kemendes RI (2020c) *Peta Sebaran COVID-19 | Covid19.go.id*. Available at: <https://covid19.go.id/peta-sebaran-covid19> (Accessed: 17 May 2021).
- Kusuma, A. P. (2015) 'Analisis Spasial Kejadian Demam Berdarah Dengue Berdasarkan Kepadatan Penduduk dan Angka Bebas Jentik di Wilayah Kerja Puskesmas Kedungmundu 2015', *Skripsi*. Available at: <https://lib.unnes.ac.id/27875/1/6411411168.pdf>.
- Lai, J. *et al.* (2020) 'Factors associated with mental health outcomes among health care workers exposed to coronavirus disease 2019', *JAMA Network Open*, 3(3). doi: 10.1001/jamanetworkopen.2020.3976.
- Lan, F. Y. *et al.* (2020) 'Work-related COVID-19 transmission in six Asian countries/areas: A follow-up study', *PLoS ONE*, 15(5), p. e0233588. doi: 10.1371/journal.pone.0233588.
- Lan, L. *et al.* (2020) 'Positive RT-PCR Test Results in Patients Recovered from

- COVID-19', *JAMA - Journal of the American Medical Association*. American Medical Association, pp. 1502–1503. doi: 10.1001/jama.2020.2783.
- Li, Q. *et al.* (2020) 'Early Transmission Dynamics in Wuhan, China, of Novel Coronavirus-Infected Pneumonia', *New England Journal of Medicine*, 382(13), pp. 1199–1207. doi: 10.1056/nejmoa2001316.
- Ling, Y. *et al.* (2020) 'Persistence and clearance of viral RNA in 2019 novel coronavirus disease rehabilitation patients', *Chinese medical journal*, 133(9), pp. 1039–1043. doi: 10.1097/CM9.0000000000000774.
- Liu, F. *et al.* (2020) 'Highly ACE2 expression in pancreas may cause pancreas damage after SARS-CoV-2 infection', *medRxiv*. doi: 10.1101/2020.02.28.20029181.
- Liu, Y. *et al.* (2020) 'The reproductive number of COVID-19 is higher compared to SARS coronavirus', *Journal of Travel Medicine*, 27(2), pp. 1–4. doi: 10.1093/jtm/taaa021.
- Manssor, B., Patel, J. and Parekh, D. (2020) 'Since January 2020 Elsevier has created a COVID-19 resource centre with free information in English and Mandarin on the novel coronavirus COVID- 19 . The COVID-19 resource centre is hosted on Elsevier Connect , the company ' s public news and information', (January), pp. 19–21. doi: 10.1016/S2468-1253(20)30057-1.Strnad.
- Martineau, A. R. *et al.* (2017) 'Vitamin D supplementation to prevent acute respiratory tract infections: Systematic review and meta-analysis of individual participant data', *BMJ (Online)*, 356. doi: 10.1136/bmj.i6583.
- McKee, M. and Stuckler, D. (2020) 'If the world fails to protect the economy, COVID-19 will damage health not just now but also in the future', *Nature Medicine*. Nature Research, pp. 640–642. doi: 10.1038/s41591-020-0863-y.
- Mujiburrahman, M., Riyadi, M. E. and Ningsih, M. U. (2020) 'Hubungan Pengetahuan dengan Perilaku Pencegahan Covid-19 di Masyarakat', *Jurnal Keperawatan Terpadu (Integrated Nursing Journal)*, 2(2), pp. 130–140. Available at: <http://jkt.poltekkes-mataram.ac.id/index.php/home/article/view/85> (Accessed: 17 May 2021).
- Mutambudzi, M. *et al.* (2020) 'Occupation and risk of severe COVID-19: Prospective cohort study of 120 075 UK Biobank participants', *Occupational and Environmental Medicine*, 78(5), pp. 307–314. doi: 10.1136/oemed-2020-106731.
- Nelwan, J. E. (2020) 'Kejadian Corona Virus Disease 2019 berdasarkan Kepadatan Penduduk dan Ketinggian Tempat per Wilayah Kecamatan', *Journal of Public Health and Community Medicine*, 1(April), pp. 32–45.
- Onder, G., Rezza, G. and Brusaferro, S. (2020) 'Case-Fatality Rate and

- Characteristics of Patients Dying in Relation to COVID-19 in Italy', *JAMA - Journal of the American Medical Association*. American Medical Association, pp. 1775–1776. doi: 10.1001/jama.2020.4683.
- Ong, S. W. X. *et al.* (2020) 'Air, Surface Environmental, and Personal Protective Equipment Contamination by Severe Acute Respiratory Syndrome Coronavirus 2 (SARS-CoV-2) from a Symptomatic Patient', *JAMA - Journal of the American Medical Association*. American Medical Association, pp. 1610–1612. doi: 10.1001/jama.2020.3227.
- Pan, Y. *et al.* (2020) 'Viral load of SARS-CoV-2 in clinical samples', *The Lancet Infectious Diseases*. Lancet Publishing Group, pp. 411–412. doi: 10.1016/S1473-3099(20)30113-4.
- Roth, D. E., Richard, S. A. and Black, R. E. (2010) 'Zinc supplementation for the prevention of acute lower respiratory infection in children in developing countries: Meta-analysis and meta-regression of randomized trials', *International Journal of Epidemiology*, 39(3), pp. 795–808. doi: 10.1093/ije/dyp391.
- Satria, R. M. A., Tutupoho, R. V. and Chalidyanto, D. (2020) 'Analisis Faktor Risiko Kematian dengan Penyakit Komorbid Covid-19', *Jurnal Keperawatan Silampari*, 4(1), pp. 48–55. doi: 10.31539/jks.v4i1.1587.
- Seftiya, A. and Kosala, K. (2021) 'Epidemiologi Karakteristik Pasien Covid-19 di Kalimantan Utara', *Jurnal Sains dan Kesehatan*, 3(5), pp. 645–653.
- Shereen, M. A. *et al.* (2020) 'COVID-19 infection: Origin, transmission, and characteristics of human coronaviruses', *Journal of Advanced Research*, 24, pp. 91–98. doi: 10.1016/j.jare.2020.03.005.
- Shi, H. *et al.* (2020) 'Radiological findings from 81 patients with COVID-19 pneumonia in Wuhan, China: a descriptive study', *The Lancet Infectious Diseases*, 20(4), pp. 425–434. doi: 10.1016/S1473-3099(20)30086-4.
- Silalahi, F. E. S. *et al.* (2020) 'GIS-based approaches on the accessibility of referral hospital using network analysis and the spatial distribution model of the spreading case of COVID-19 in Jakarta, Indonesia', *BMC Health Services Research*, 20(1), pp. 1–20. doi: 10.1186/s12913-020-05896-x.
- Sim, K. *et al.* (2020) 'The anatomy of panic buying related to the current COVID-19 pandemic', *Psychiatry Research*. Elsevier Ireland Ltd. doi: 10.1016/j.psychres.2020.113015.
- Simet, S. M. and Sisson, J. H. (2015) 'Alcohol's effects on lung health and immunity', *Alcohol Research: Current Reviews*, 37(2), p. 199. Available at: /pmc/articles/PMC4590617/ (Accessed: 18 May 2021).
- Susilo, A. *et al.* (2020) 'Coronavirus Disease 2019: Tinjauan Literatur Terkini', *Jurnal Penyakit Dalam Indonesia*, 7(1), p. 45. doi: 10.7454/jpdi.v7i1.415.

- To, K. K. W. *et al.* (2020) ‘Consistent detection of 2019 novel coronavirus in saliva’, *Clinical Infectious Diseases*, 71(15), pp. 841–843. doi: 10.1093/cid/ciaa149.
- Wang, W. *et al.* (2020) ‘Detection of SARS-CoV-2 in Different Types of Clinical Specimens’, *JAMA - Journal of the American Medical Association*. American Medical Association, pp. 1843–1844. doi: 10.1001/jama.2020.3786.
- Wardani, D. W. S. R. (2016) ‘Pemanfaatan Statistik Spasial dalam Mempelajari Faktor Risiko Tuberkulosis Paru sebagai Upaya Penurunan Insidensi Tuberkulosis Paru’, *Jurnal Kedokteran Universitas Lampung*, 1(2)(2), pp. 358–362. Available at: <http://juke.kedokteran.unila.ac.id/index.php/JK/article/download/1641/1599>.
- Wenham, C., Smith, J. and Morgan, R. (2020) ‘COVID-19: the gendered impacts of the outbreak’, *The Lancet*, 395(10227), pp. 846–848. doi: 10.1016/S0140-6736(20)30526-2.
- WHO (2020a) *Advice for the public*, World Health Organization. Available at: <https://www.who.int/emergencies/diseases/novel-coronavirus-2019/advice-for-public> (Accessed: 18 May 2021).
- WHO (2020b) *Coronavirus disease (COVID-19)*, World Health Organization. Available at: <https://www.who.int/emergencies/diseases/novel-coronavirus-2019> (Accessed: 17 May 2021).
- WHO (2020c) *COVID-19 Public Health Emergency of International Concern (PHEIC) Global research and innovation forum*, World Health Organization. Available at: [https://www.who.int/publications/m/item/covid-19-public-health-emergency-of-international-concern-\(pheic\)-global-research-and-innovation-forum](https://www.who.int/publications/m/item/covid-19-public-health-emergency-of-international-concern-(pheic)-global-research-and-innovation-forum) (Accessed: 17 May 2021).
- WHO (2020d) ‘Global Surveillance for COVID-19 disease caused by human infection with novel coronavirus (COVID-19)’, *World Health Organization*, (January), pp. 2019–2020. Available at: [https://www.who.int/publications-detail/global-surveillance-for-human-infection-with-novel-coronavirus-\(2019-ncov\)%0Afile:///C:/Users/Acer/Documents/Mendeley Desktop/World Health Organization/HttpsWww.Who.IntPublications-DetailGlobal-Surveillance-for-Huma](https://www.who.int/publications-detail/global-surveillance-for-human-infection-with-novel-coronavirus-(2019-ncov)%0Afile:///C:/Users/Acer/Documents/Mendeley%20Desktop/World%20Health%20Organization/HttpsWww.Who.IntPublications-DetailGlobal-Surveillance-for-Huma).
- WHO (2020e) *Infection prevention and control during health care when novel coronavirus (nCoV) infection is suspected*, World Health Organization. Available at: <https://www.who.int/publications/i/item/10665-331495> (Accessed: 18 May 2021).
- WHO (2020f) ‘Laboratory testing for coronavirus disease 2019 (COVID-19) in suspected human cases’, *World Health Organization*, 2019(March), pp. 1–7.

- WHO (2020g) *Rational use of personal protective equipment for coronavirus disease (COVID-19) and considerations during severe shortages*, World Health Organization. Available at: [https://www.who.int/publications/i/item/rational-use-of-personal-protective-equipment-for-coronavirus-disease-\(covid-19\)-and-considerations-during-severe-shortages](https://www.who.int/publications/i/item/rational-use-of-personal-protective-equipment-for-coronavirus-disease-(covid-19)-and-considerations-during-severe-shortages) (Accessed: 18 May 2021).
- WHO (2020h) ‘Report of the WHO-China Joint Mission on Coronavirus Disease 2019 (COVID-19)’, *The WHO-China Joint Mission on Coronavirus Disease 2019*, 1(16-24 February), pp. 1–40. Available at: <https://www.who.int/docs/default-source/coronaviruse/who-china-joint-mission-on-covid-19-final-report.pdf>.
- WHO (2020i) *WHO Coronavirus (COVID-19) Dashboard | WHO Coronavirus (COVID-19) Dashboard With Vaccination Data*, World Health Organization. Available at: <https://covid19.who.int/> (Accessed: 17 May 2021).
- WHO (2021) *COVID-19 Vaccines Advice*, World Health Organization<sup>2</sup>. Available at: <https://www.who.int/emergencies/diseases/novel-coronavirus-2019/covid-19-vaccines/advice> (Accessed: 18 May 2021).
- De Wit, E. *et al.* (2016) ‘SARS and MERS: Recent insights into emerging coronaviruses’, *Nature Reviews Microbiology*, 14(8), pp. 523–534. doi: 10.1038/nrmicro.2016.81.
- Wu, Z. and McGoogan, J. M. (2020) ‘Characteristics of and Important Lessons from the Coronavirus Disease 2019 (COVID-19) Outbreak in China: Summary of a Report of 72314 Cases from the Chinese Center for Disease Control and Prevention’, *JAMA - Journal of the American Medical Association*. American Medical Association, pp. 1239–1242. doi: 10.1001/jama.2020.2648.
- Xiao, F. *et al.* (2020) ‘Evidence for Gastrointestinal Infection of SARS-CoV-2’, *Gastroenterology*, 158(6), pp. 1831-1833.e3. doi: 10.1053/j.gastro.2020.02.055.
- Yan, G. *et al.* (2020) ‘Covert COVID-19 and false-positive dengue serology in Singapore’, *The Lancet Infectious Diseases*. Lancet Publishing Group, p. 536. doi: 10.1016/S1473-3099(20)30158-4.
- Yang, X. *et al.* (2020) ‘Clinical course and outcomes of critically ill patients with SARS-CoV-2 pneumonia in Wuhan, China: a single-centered, retrospective, observational study’, *The Lancet Respiratory Medicine*, 8(5), pp. 475–481. doi: 10.1016/S2213-2600(20)30079-5.
- Zhang, T., Wu, Q. and Zhang, Z. (2020) ‘Probable Pangolin Origin of SARS-CoV-2 Associated with the COVID-19 Outbreak’, *Current Biology*, 30(7), pp. 1346-1351.e2. doi: 10.1016/j.cub.2020.03.022.

Zhou, C. *et al.* (2020) 'COVID-19: Challenges to GIS with Big Data', *Geography and Sustainability*, 1(1), pp. 77–87. doi: 10.1016/j.geosus.2020.03.005.

Zhou, P. *et al.* (2020) 'A pneumonia outbreak associated with a new coronavirus of probable bat origin', *Nature*, 579(7798), pp. 270–273. doi: 10.1038/s41586-020-2012-7.

Zou, L. *et al.* (2020) 'SARS-CoV-2 Viral Load in Upper Respiratory Specimens of Infected Patients', *New England Journal of Medicine*, 382(12), pp. 1177–1179. doi: 10.1056/nejmc2001737.

<https://covid19.go.id/>

<https://covid19.sulselprov.go.id/>

<https://infocorona.makassar.go.id>



# LAMPIRAN

## Lampiran 1

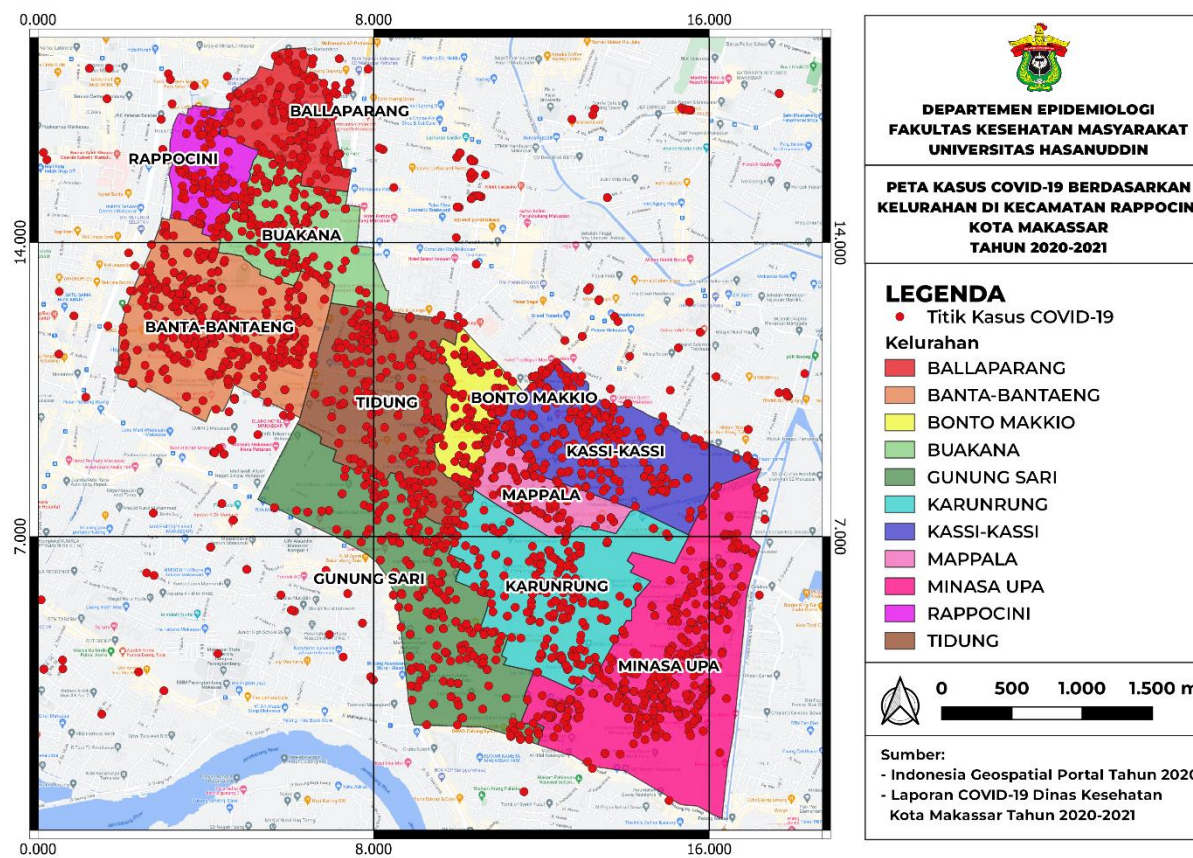
## LEMBAR ISIAN DATA

Kelurahan	Jumlah Penduduk	Kepadatan Penduduk (jiwa/km <sup>2</sup> )	Jumlah Kasus Baru	<i>Incidence Rate/1.000</i>	Jumlah Rumah Sakit	Jumlah Sembuh	RR	Jumlah Meninggal	CFR
Balla Parang	11.693	19.819	362	31,0	2	356	98,3	6	1,7
Banta-Bantaeng	19.658	15.479	786	40,0	3	763	97,1	23	2,9
Bonto Makkio	4.770	23.850	246	51,6	0	244	99,2	2	0,8
Buakana	10.710	13.909	338	31,6	1	332	98,2	6	1,8
Gunung Sari	13.192	13.461	953	72,2	1	930	97,6	22	2,3
Karunrung	13.961	9.185	596	42,7	0	583	97,8	12	2,0
Kassi-Kassi	17.223	21.004	886	51,4	0	868	98,0	17	1,9
Mappala	9.456	18.912	407	43,0	0	392	96,3	15	3,7
Minasa Upa	22.029	19.156	943	42,8	1	926	98,2	17	1,8
Rappocini	8.271	22.975	213	25,8	0	209	98,1	3	1,4
Tidung	13.624	15.308	703	51,6	1	692	98,4	11	1,6

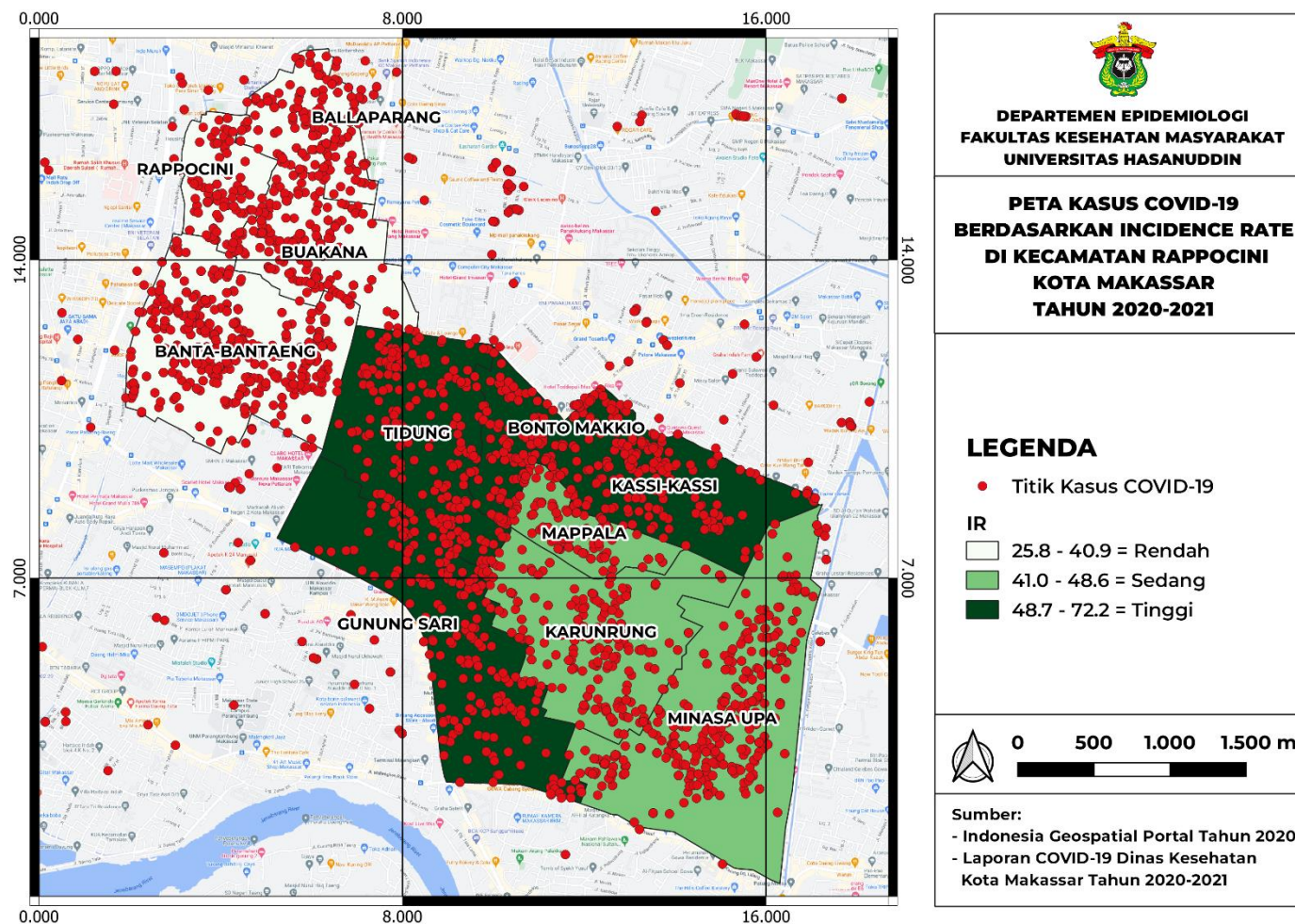
## Lampiran 2

## ANALISIS SPASIAL

## 1. Peta Kasus COVID-19 Berdasarkan Kelurahan di Kecamatan Rappocini Kota Makassar Tahun 2020-2021

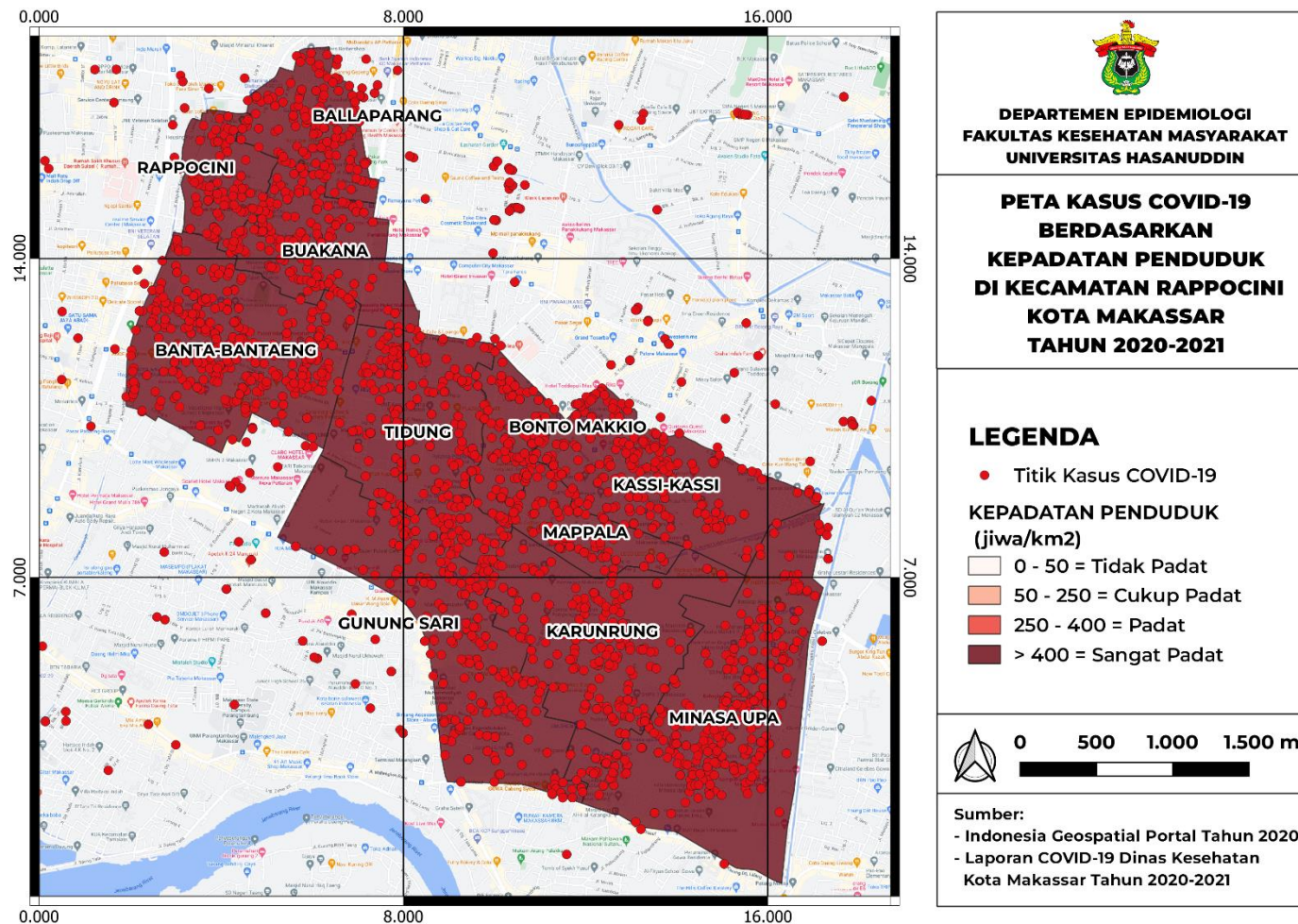


2. Peta Kasus COVID-19 Berdasarkan Incidence Rate di Kecamatan Rappocini Kota Makassar Tahun 2020-2021

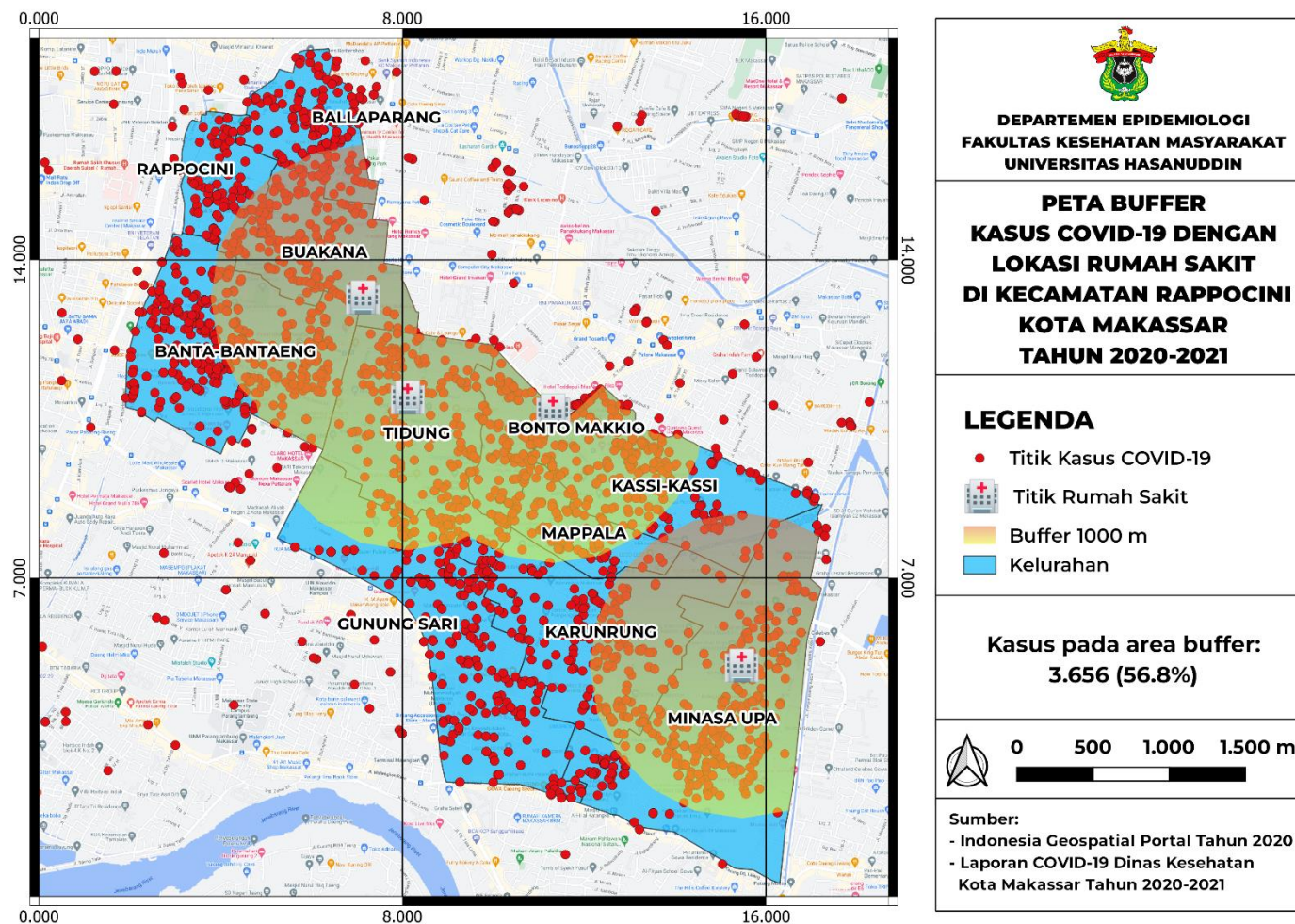




3. Peta Kasus COVID-19 Berdasarkan Kepadatan Penduduk di Kecamatan Rappocini Kota Makassar Tahun 2020-2021

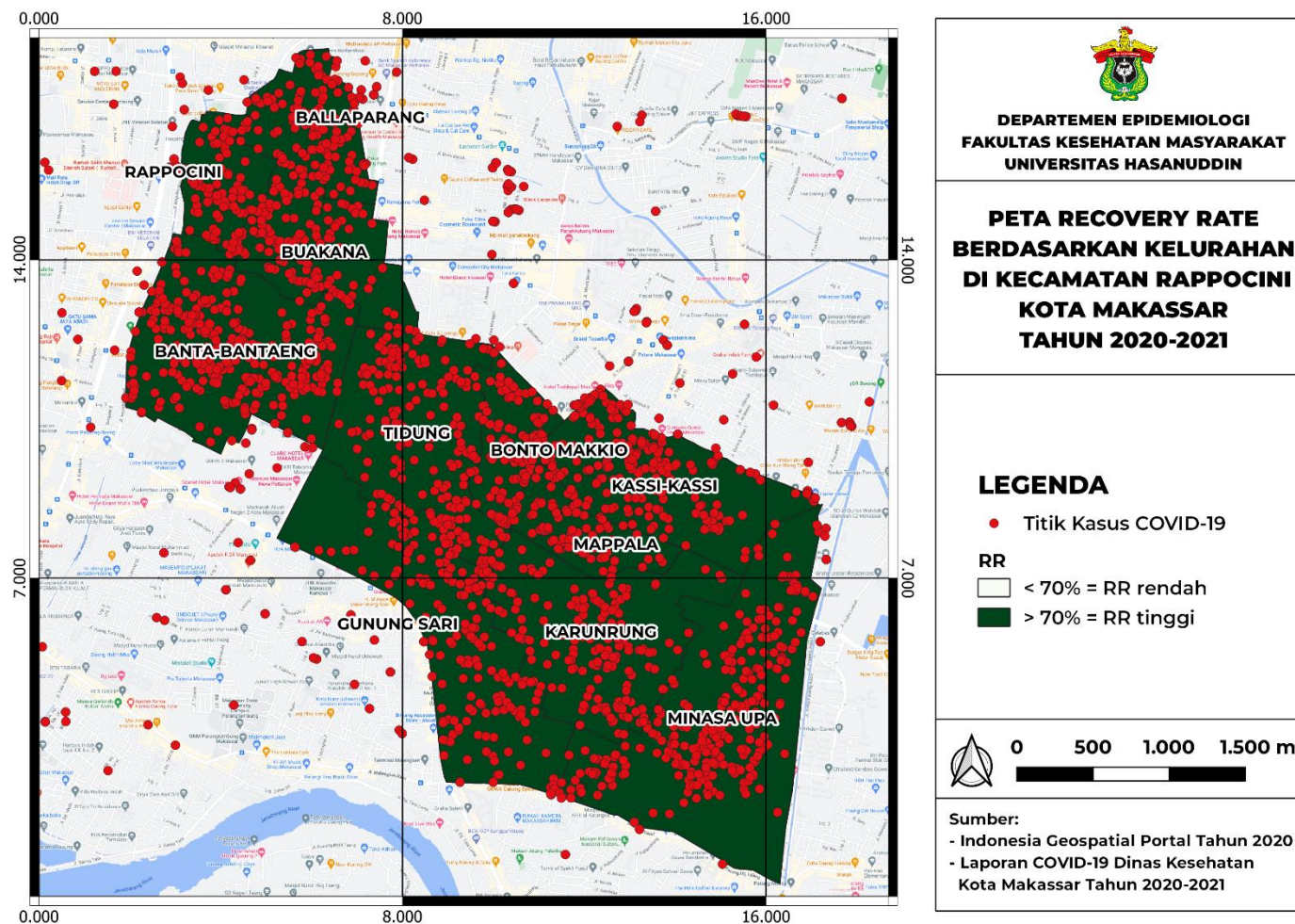


4. Peta Buffer Kasus COVID-19 dengan Lokasi Rumah Sakit di Kecamatan Rappocini Kota Makassar Tahun 2020-2021

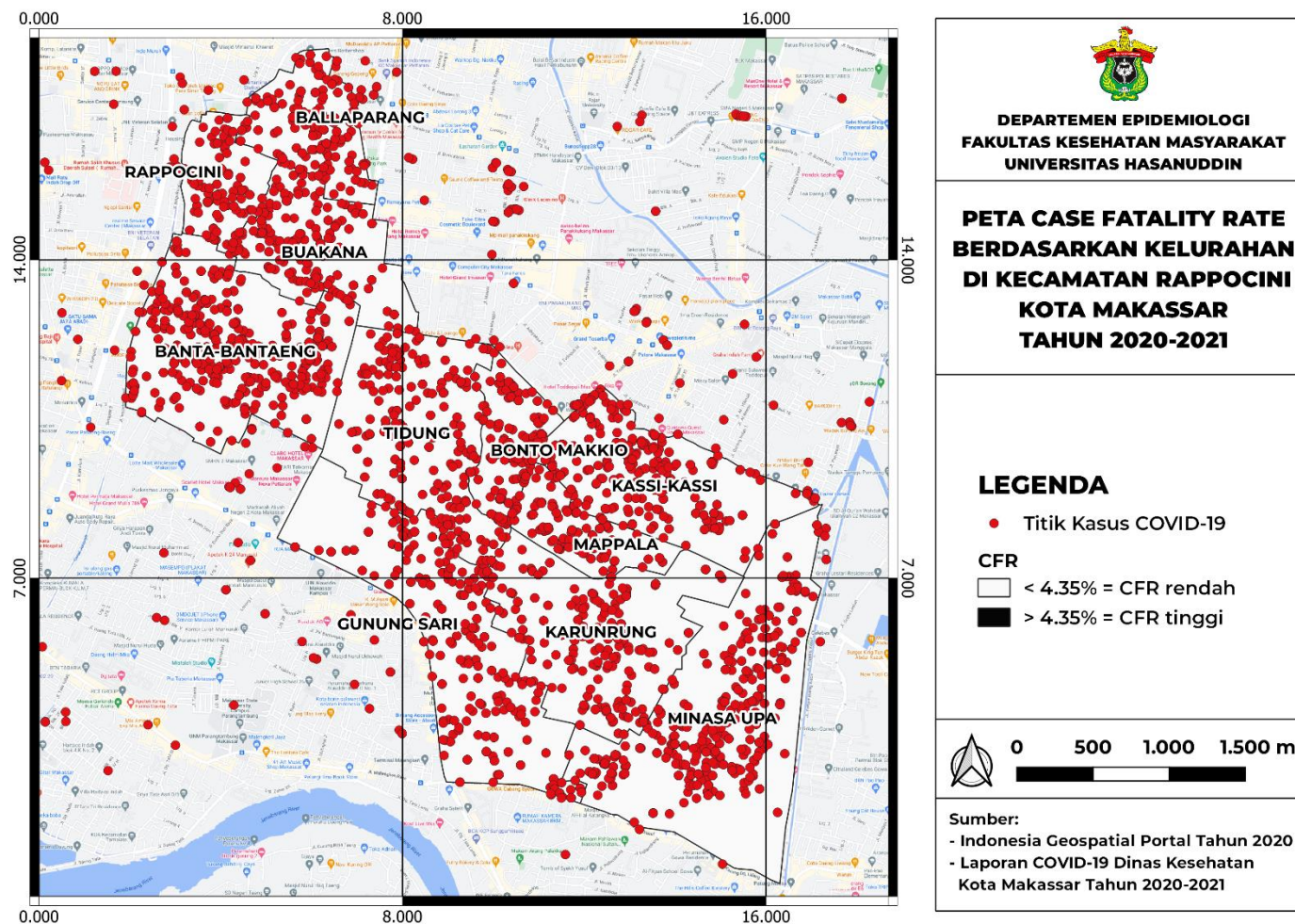




5. Peta *Recovery Rate* Berdasarkan Kelurahan di Kecamatan Rappocini Kota Makassar Tahun 2020-2021



6. Peta Case Fatality Rate Berdasarkan Kelurahan di Kecamatan Rappocini Kota Makassar Tahun 2020-2021





Lampiran 3

## PERSURATAN



KEMENTERIAN PENDIDIKAN DAN KEBUDAYAAN  
UNIVERSITAS HASANUDDIN  
**FAKULTAS KESEHATAN MASYARAKAT**  
**DEPARTEMEN EPIDEMIOLOGI**  
Jl. Perintis Kemerdekaan KM. 10 Makassar 90245, ruangan KA.307 lt. III FKM Unhas  
e-mail: epid@fkm.unhas.ac.id

Nomor : 2740/UN4.14.7.1/PT.01.04/2021  
Perihal : Izin Pengambilan Data Awal

12 April 2021

Yth,

**Kepala Dinas Kesehatan Kota Makassar**

Di -

Tempat

Dengan hormat, Kami ajukan mahasiswa Jurusan Epidemiologi Fakultas Kesehatan Masyarakat Universitas Hasanuddin :

Nama : Umaimah Az-Zahrah Idris

NIM : K011171010

Bermaksud untuk pengambilan data awal dalam rangka penyusunan Proposal Penelitian dengan topik penelitian :

**“Studi Epidemiologi dengan Pendekatan Analisis Spasial terhadap Faktor-faktor Risiko yang Berhubungan dengan Kejadian COVID-19 di Kota Makassar Tahun 2020”**

Untuk proses ini, kiranya Bapak/Ibu berkenan membantu mahasiswa kami dalam proses perizinannya. Adapun data yang ingin diambil sebagai berikut :

1. Data kasus positif COVID-19 di Kota Makassar Tahun 2020

Demikian permohonan kami, atas bantuan dan kerja samanya kami ucapkan terima kasih.

Sekretaris Departemen Epidemiologi

**Indra Dwinata, SKM, MPH**

NIP. 19871004 201404 1 001

*Lampiran 4***RIWAYAT HIDUP PENULIS****A. IDENTITAS**

Nama : Umaimah Az-Zahrah Idris  
 Tempat/Tanggal Lahir : Makassar, 21 Mei 1999  
 Jenis Kelamin : Perempuan  
 Agama : Islam  
 Alamat : Kompleks Hartaco Permai Blok E/7  
 No. HP : 085156592071  
 Nama Orang Tua : H. Dr. Ir. Idris Parakkasi, MM. &  
 Seniwati Muin, S.Si., Apt

**B. RIWAYAT PENDIDIKAN**

1. TK : TK Islam Terpadu Wihdatul Ummah tahun 2005
2. SD : SD Islam Terpadu Wihdatul Ummah tahun 2011
3. SMP : SMP Islam Terpadu Wahdah Islamiyah tahun 2014
4. SMA : SMA Islam Terpadu Wahdah Islamiyah tahun 2017
5. Perguruan Tinggi : Program Sarjana Program Studi Kesehatan Masyarakat  
 Fakultas Kesehatan Masyarakat Universitas Hasanuddin  
 Makassar, tahun masuk 2017.

**C. PENGALAMAN ORGANISASI**

1. Himpunan Mahasiswa Epidemiologi Fakultas Kesehatan Masyarakat  
 Universitas Hasanuddin Tahun 2020-2021