

DAFTAR PUSTAKA

- Alwandi, F. (2022). Analisis pola dan jenis tanaman agroforestry pada kelompok tani hutan sipatuo sipatokkong di hutan kemasyarakatan desa talabangi kabupaten bone. *Skripsi*.
- Apriliyanti, N. F., Seotopo, L., & Respatijarti. (2016). Keragaman genetik pada generasi F3 cabai (*Capsicum annum* L.). *Jurnal Produksi Tanaman*, 4(3), 209–217.
- Badan Pusat Statistik. (2021). *Statistik Karet Indonesia* (da P. Direktorat Statistik Tanaman pangan,Hortikultura (ed.)). Badan Pusat Statistik.
- Bustomi, S., & Yulianti, M. (2013). Model Hubungan Tinggi Dan Diameter Pohon Akasia (*Acacia auriculiformis*) Sebagai Penghasil Kayu Energi Di Kabupaten Purwokerto Provinsi Jawa Tengah. *Jurnal Penelitian Hutan Tanaman*, 10(3), 155–160. <https://doi.org/10.20886/jpht.2013.10.3.155-160>
- de Souza, L. M., Dos Santos, L. H. B., Rosa, J. R. B. F., da Silva, C. C., Mantello, C. C., Conson, A. R. O., Scaloppi, E. J., Fialho, J. de F., de Moraes, M. L. T., Gonçalves, P. de S., Margarido, G. R. A., Garcia, A. A. F., Le Guen, V., & De Souza, A. P. (2018). Linkage disequilibrium and population structure in wild and cultivated populations of rubber tree (*Hevea brasiliensis*). *Frontiers in Plant Science*, 9(July), 1–10. <https://doi.org/10.3389/fpls.2018.00815>
- Efendi, M. R., & Arindi. (2013). Dampak Program Agroforestri Terhadap Habitat asli Fauna Di Desa Batang Duku Kecamatan Bukit Batu Kabupaten Bengkalis. *Seminar Nasional 2: Quo Vadis Restorasi Gambut Di Indonesia*, 12–26.
- Fiqa, A. P., Nursafitri, T. H., Fauziah, F., & Masudah, S. (2021). Pengaruh faktor lingkungan terhadap pertumbuhan beberapa aksesori *Dioscorea alata* L terpilih koleksi kebun raya purwodadi. *Jurnal Agro*, 8(1), 25–39. <https://doi.org/10.15575/10594>
- Hairiah, K., Sardjono, M. A., & Sabarnuridin, S. (2003). Pengantar Agroforestri. In *Agroforestry Teaching Materials*.
- Hariyadi, B. W., Purwanti, S., Pratiwi, Y. I., Ali, M., & Suryanto, A. (2019). *Dasar-Dasar Agronomi Uwais Inspirasi Indonesia*. Uwais Inspirasi Indonesia.
- Hasanuddin, H., Muhibbuddin, M., Wardiah, W., & Mulyadi, M. (2018). Anatomi Tumbuhan. In *Anatomi Tumbuhan*. <https://doi.org/10.52574/syiahkualauniversitypress.291>
- Hemon, A. F., Listiana, B. E., Dewi, S. M., Pertanian, F., & Mataram, U. (2023). *Pola tanaman baris ganda dan pengaruhnya terhadap pertumbuhan dan hasil beberapa genotipe kacang tanah di lahan kering*. 5, 28–37.
- Ika Paramitha, A., & Zazaroh, F. (2022). Karakterisasi Morfologi Beberapa Genotipe Tanaman Ciplukan (*Physalis angulata* L.). *Jurnal Ilmu Pertanian*, 1(2), 94–99. <https://doi.org/10.33379/radikula.v1i2.2202>

- Joseph F.H Jr., William C.Black, Barry J Babin, R. E. A. (2020). Multivariate Data Analysis. In *Sevent* (Vol. 12, Issue 12). <https://doi.org/10.3390/polym12123016>
- Jumani. (2004). *Pemuliaan Pohon* (Issue 1). Manado: Balai Penelitian dan Pengembangan Kehutanan Manado. 100 halaman. ISBN: 979-979-827-6.
- Kinho, J., Halawane, J., Irawan, A., & Kafiar, Y. (2015). *Evaluasi pertumbuhan tanaman uji keturunan eboni (Diospyros rumphii) umur satu tahun di persemaian. 1*, 800–804. <https://doi.org/10.13057/psnmbi/m010422>
- Luthfiah, A., Rifiana, & Septiana. (2021). *Frontier Agribisnis. Frontier Agribisnis*, 5(1), 2021–2229. <https://ppjp.ulm.ac.id/journals/index.php/fag>
- Muhammad Ismail, S. (2016). Penyardapan Tanaman Karet (*Hevea brasiliensis* Muell Arg.) di Kebun Sumber Tengah, Jember, Jawa Timur. *Jurnal Agrifo*, 6(August), 128.
- Musdalifah. (2021). Keragaman Genetik Pinus Rombeng (*Pinus* sp.) Di Kabupaten Bantaeng Berdasarkan Penanda Morfologi. *Skripsi*.
- Purba T. P., N.,Hardian, Junaedi Abdus Purwaningsih, Junairiah Gunawan Bambang, Firgiyanto Refa, A. (2021). Tanah Dan Nutrisi Tanaman. *Yayasan Kita Menulis* (Vol. 1, Issue 3).
- Sa'diyah, N., Widiastuti, M., & Ardian, A. (2013). Keragaan, Keragaman, Dan Heritabilitas Karakter Agronomi Kacang Panjang (*Vigna unguiculata*) Generasi F1 Hasil Persilangan Tiga Genotipe. *Jurnal Agrotek Tropika*, 1(1), 32–37. <https://doi.org/10.23960/jat.v1i1.1885>
- Sahuri,. (2017). Improving Planting Pattern of Rubber (*Hevea brasiliensis* Muell.Arg.) for Long-term Intercropping. *Jurnal Ilmu Pertanian Indonesia*, 22(1), 46–51. <https://doi.org/10.18343/jipi.22.1.46>
- Sari, V. Y., Qurniati, R., Duryat, & Bakri, S. (2021). *Komposisi Tanaman pada Pola Agroforestri dan Kontribusinya Differences of Agroforestry Composition and Contribution to Community Income in Batutege Forest Management Unit (Case study in Gapoktan of Hijau Makmur and Cempaka). March*.
- Sarsono, Y., Sugiprihatini, D., Murdiati, T., Maylandari, M. E., & Febbiyanti, T. R. (2020). Karakterisasi Isolat *Fusicoccum* (Crous. S dan Wingf. M.J) Pada Karet (*Hevea brasiliensis*) Secara Morfologi Dan Teknik Polymerase Chain Reaction. *Jurnal Penelitian Karet*, 38(1), 27–36. <https://doi.org/10.22302/ppk.jpk.v38i1.665>
- Satriawan, I. B., Sugiharto, A. N., & dan Ashari, S. (2017). Heritabilitas dan kemajuan genetik tanaman cabai merah (*Capsicum annuum* L.) Generasi f 2. *Jurnal Produksi Tanaman*, 5(2), 343–348.

- Satriawan, I. B., Sugiharto, A. N., Sumeru, D., Jurusan, A., Pertanian, B., Pertanian, F., Brawijaya, U., Veteran, J., & Timur Indonesia, J. (2017). Heritabilitas Dan Kemajuan Genetik Tanaman Cabai Merah (*Capsicum Annuum* L.) Generasi F2 Heritability And Genetic Advance In Generation F2 Of Red Chili (*Capsicum Annuum* L.). *Jurnal Produksi Tanaman*, 5(2), 343–348.
- Sofiani, I. H., Ulfiah, K., & Fitriyanie, L. (2018). Budidaya Tanaman Karet (*Hevea brasiliensis*) di Indonesia dan Kajian Ekonominya. *Jurnal Agroteknologi*, 2(90336), 1–23.
- Suprayogo, D., Widiyanto, Lusiana, B., & van Noordwijk, M. (2002). Neraca air dalam Sistem Agroforestri. In *Bahan Ajar 7. Neraca Air dalam Agroforestri* (Issue Ic, pp. 129–139).
- Syahadat, R. M., & Aziz, S. A. (2013). Hubungan Jumlah Bunga, Jumlah Daun, Jumlah Anak Daun, Jumlah Cabang, Dan Tinggi Tanaman Terhadap Pertumbuhan Bibit Tanaman Kemuning (*Murraya Paniculata* (L.) Jack). *Jurnal Lanskap Indonesia*, 5(1), 23–25.
- Syahputra, N., Mawardati, & Suryadi. (2017). Analisis Faktor Yang Mempengaruhi Petani Memilih Pola Tanam Pada Tanaman Perkebunan Di Desa Paya Palas Kecamatan Ranto Peureulak Kabupaten Aceh Timur. *Jurnal Agrifo*, 2(1), 10–27.
- Tri Asmi, M., Qurniati, R., & Haryono, D. (2014). Komposisi Tanaman Agroforestri Dan Kontribusinya Terhadap Pendapatan Rumah Tangga Di Desa Pesawaran Indah Kabupaten Pesawaran Lampung. *Jurnal Sylva Lestari*, 1(1), 55. <https://doi.org/10.23960/jsl1155-64>
- Triwanto, J., Syarifuddin, A., & Mutaqin, T. (2012). Aplikasi agroforestry di Desa Mentaraman Kecamatan Donomulyo Kabupaten Malang. *Jurnal Agro*, 9(1998), 13–21. <https://ejournal.umm.ac.id/index.php/dedikasi/article/view/1380>
- Venti Novita Sari, Dwi Wahyuni Ganefianti, & Merakati Handajaningsih. (2021). Karakterisasi, Variabilitas Genetik dan Heritabilitas Genotipe Tapak Dara (*Catharanthus roseus*). *Jurnal Agronomi Indonesia*, 49(3), 308–315. <https://doi.org/10.24831/jai.v49i3.37742>
- Wahyudi, A., Rahmasari, M., Nazirwan, N., & Sari, M. F. (2022). Keragaman Empat Aksesori Bunga Matahari (*Helianthus annuus* L.) Menggunakan Penanda Morfologi. *Jurnal Agrotek Tropika*, 10(1), 103. <https://doi.org/10.23960/jat.v10i1.5301>
- Widiastuti, A., & Suhartanto, M. U. H. R. (2013). Analisis keragaman manggis (*Garcinia mangostana*) diiradiasi dengan sinar gamma berdasarkan penanda ISSR. *Bioteknologi*, 10(1), 15–22. <https://doi.org/10.13057/biotek/c100103>
- Wijaya Hardi, Effendi Zulham, M. H. F. (2019). Analisa Produktivitas Tanaman Karet (*Havea brasiliensis* Muell. Arg) Klon Pb 260 Dengan Menggunakan Berbagai Sistem Sadap Di Afdeling I Kebun Bangun Pt. Perkebunan Nusantara Iii Productivity. *Agro Estate*, 3(2), 66–74.

- Wulandari, C. (2011). Agroforestry: Kesejahteraan Masyarakat dan Konservasi Sumberdaya Alam. In *Journal of Chemical Information and Modeling*.
- Wulandari, C., Harianto, S. P., & Novasari, D. (2020). Pengembangan agroforestri yang berkelanjutan dalam menghadapi perubahan iklim. In *Pusaka Media*.
- Zaini, A., Juraemi, Rusdiansyah, & Saleh, M. (2017). Pengembangan Karet (Studi Kasus di Kutai Timur). *Mulawarman University Press*, 1–187.
- Zhao, S., Guo, Y., Sheng, Q., & Shyr, Y. (2014). Advanced Heat Map and Clustering analysis using Heatmap3. *BioMed Research International*, 2014. <https://doi.org/10.1155/2014/986048>
- Zulfahmi. (2013). Penanda Dna Untuk Analisis Genetik Tanaman (DNA Markers for Plants Genetic Analysis). *Jurnal Agroteknologi*, 3(2), 41–52. [chrome-extension://efaidnbmnnnibpcajpcglclefindmkaj/https://repository.uin-suska.ac.id/23475/1/Penanda DNA untuk analisis tanaman.pdf](chrome-extension://efaidnbmnnnibpcajpcglclefindmkaj/https://repository.uin-suska.ac.id/23475/1/Penanda%20DNA%20untuk%20analisis%20tanaman.pdf)

LAMPIRAN

Lampiran 1. Data Pengamatan Warna Daun, Kulit dan Akar

Plot	Pohon	Warna Daun	Warna Kulit	Warna Akar
1	1	7.5 GY 3/2 Dark Green	5 Y 5/4 Yellow	7.5 YR 4/2 Yellowish Red
	2	7.5 GY 3/4	7.5 YR 4/4 Dark Yellowish Red	5 Y 5/2 Yellow
	3	7.5 GY 3/2 Dark Green	7.5 YR 4/4 Dark Yellowish Red	7.5 YR 4/2 Yellowish Red
2	1	7.5 GY 3/2 Dark green	5 YR 6/2 Dark Yellow Red	5 YR 6/2 Yellow
	2	7.5 GY 3/4 Dark Green	7.5 YR 6/2 Dark Yellowish Red	7.5 YR 6/2 Yellowish Red
	3	7.5 GY 3/4 Dark Green	5 YR 6/2 Dark Yellow Red	5 YR 6/2 Yellow
3	1	7.5 GY 3/4 Dark Green	7.5 YR 6/2 Dark Yellowish Red	7.5 YR 4/2 Yellowish Red
	2	7.5 GY 3/4 Dark Green	7.5 YR 6/2 Dark Yellowish Red	5 YR 5/2 Yellow Red
	3	7.5 GY 4/4 Dark Green	7.5 YR 6/2 Dark Yellowish Red	5 YR 5/2 Yellow Red
4	1	7.5 GY 3/2 Dark Green	7.5 YR 6/2 Dark Yellowish Red	2.5 GY 7/4 White
	2	7.5 GY 3/4 Dark Green	7.5 YR 7/2 Dark Yellowish Red	2.5 GY 6/4 White
	3	7.5 GY 3/2 Dark Green	7.5 YR 7/2 Dark Yellowish Red	7.5 YR 6/4 Yellowish Red
5	1	7.5 GY 3/4 Dark Green	7.5 YR 6/2 Dark Yellowish Red	2.5 Y 6/4 White
	2	7.5 GY 3/4 Dark Green	7.5 YR 7/4 Dark Yellowish Red	2.5 Y 5/6 White
	3	7.5 GY 3/4 Dark Green	7.5 YR 7/2 Dark Yellowish Red	2.5 Y 5/6 White
6	1	7.5 GY 3/2 Dark Green	5Y 7/2 Dark Yellow	2.5 GY 6/4 White
	2	7.5 GY 3/2 Dark Green	5Y 6/2 Dark Yellow	2.5 GY 5/6 White
	3	7.5 GY 3/2 Dark Green	5Y 6/2 Dark Yellow	2.5 GY 5/6 White
7	1	7.5 GY 7/4 Green	5 YR 4/8 Yellow White	7.5 YR 4/2 Yellowish Red
	2	7.5 GY 3/4 Dark Green	5 YR 4/8 Yellow White	7.5 YR 4/2 Yellowish Red
	3	7.5 GY 3/4 Dark Green	5 YR 4/8 Yellow White	7.5 YR 6/2 Yellowish Red

8	1	7.5 GY 3/2 Dark Green	5 Y 6/2 Dark Yellow	5 YR 3/2 Yellow Red
	2	7.5 GY 3/2 Dark Green	5 Y 8/2 Dark Yellow	5 YR 3/4 Yellow Red
	3	7.5 GY 3/2 Dark Green	5 Y 5/2 Dark Yellow	5 YR 3/2 Yellow Red
9	1	7.5 GY 3/2 Dark Green	5 Y 6/2 Dark Yellow	7.5 YR 6/2 Yellowish Red
	2	7.5 GY 3/2 Dark Green	5 Y 5/2 Dark Yellow	7.5 YR 4/2 Yellowish Red
	3	7.5 GY 3/2 Dark Green	5 Y 6/2 Dark Yellow	7.5 YR 6/4 Yellowish Red
10	1	7.5 GY 4/4 Dark Green	5 RP 8/2 Dark Red Purple	2.5 Y 6/4 Pale Yellow
	2	7.5 GY 3/4 Dark Green	2.5 Y 6/2 White	2.5 Y 6/4 Pale Yellow
	3	7.5 GY 3/4 Dark Green	5 RP 8/2 Dark Red Purple	7.5 YR 6/2 Yellowish Red
11	1	7.5 GY 3/4 Dark Green	2.5 Y 5/4 White	7.5 YR 5/4 Yellowish Red
	2	7.5 GY 3/4 Dark Green	7.5 YR 6/4 Dark Yellowish Red	7.5 YR 4/2 Yellowish Red
	3	7.5 GY 3/4 Dark Green	7.5 YR 6/4 Dark Yellowish Red	7.5 YR 5/4 Yellowish Red
12	1	7.5 GY 3/2 Dark Green	7.5 YR 6/2 Dark Yellowish Red	7.5 YR 7/4 Yellowish Red
	2	7.5 GY 3/2 Dark Green	5 Y 6/2 Yellow	7.5 YR 7/6 Yellowish Red
	3	7.5 GY 3/4 Dark Green	7.5 YR 5/2 Dark Yellowish Red	7.5 YR 7/4 Yellowish Red

Lampiran 2. Data Pengukuran Tinggi, Diameter dan Volume Pohon

Sampel	K (cm)	D (m)	Ttot (m)	Tbc (m)	LBDS (m ²)	Volume Total (m ³)
P1 P1	117	0.4	10.3	2.5	0.293	2.107
P1 P2	102	0.3	7.6	3.5	0.255	1.358
P1 P3	111	0.4	9.4	2.8	0.278	1.828
P2 P1	85	0.27	8.6	2.7	0.213	1.280
P2 P2	72	0.23	10.0	5.2	0.180	1.259
P2 P3	71	0.23	10.0	2.7	0.178	1.241
P3 P1	58	0.18	9.7	3.7	0.145	0.984
P3 P2	63	0.20	9.7	3.5	0.158	1.069
P3 P3	57	0.18	9.7	3.7	0.143	0.967
P4 P1	41	0.13	5.2	3.0	0.103	0.376
P4 P2	40	0.13	5.6	2.7	0.100	0.395
P4 P3	44	0.14	5.6	2.3	0.110	0.434
P5 P1	43	0.14	6.7	3.4	0.108	0.504
P5 P2	45	0.14	5.4	3.2	0.113	0.428
P5 P3	44	0.14	6.1	3.2	0.110	0.466
P6 P1	45	0.14	5.6	2.8	0.113	4.442
P6 P2	44	0.14	6.3	3.0	0.110	4.823
P6 P3	43	0.14	4.1	2.8	0.108	3.080
P7 P1	88	0.3	10.6	5.4	0.220	1.582
P7 P2	69	0.2	13.1	4.3	0.173	1.862
P7 P3	75	0.2	13.1	4.3	0.188	0.983
P8 P1	72	0.2	3.4	2.5	0.223	0.524
P8 P2	89	0.3	9.4	3.7	0.188	1.235
P8 P3	75	0.2	11.6	4.7	0.163	1.320
P9 P1	65	0.2	13.5	3.9	0.163	1.538
P9 P2	92	0.3	9.1	1.8	0.230	1.471
P9 P3	67	0.2	10.3	3.9	0.168	1.207
P10 P1	46	0.15	9.4	3.2	0.115	0.758
P10 P2	50	0.16	8.9	3.4	0.125	0.776
P10 P3	59	0.19	8.9	3.2	0.148	0.915
P11 P1	56	0.18	10.3	2.3	0.140	1.009
P11 P2	55	0.18	12.0	6.7	0.138	1.151
P11 P3	53	0.17	6.7	1.8	0.133	0.621
P12 P1	51	0.16	9.1	5.0	0.128	0.815
P12 P2	55	0.18	12.3	3.4	0.138	1.186
P12 P3	51	0.16	6.7	3.2	0.128	0.598

Lampiran 3. Data Luas Bidang Dasar per ha

Plot (0,1125ha)	Jumlah Pohon	LBDS (m ²)	LBDS/Ha (m ²)
1	47	0.195	1.733
2	49	0.136	1.209
3	39	0.12	1.067
4	77	0.777	6.907
5	52	0.888	7.893
6	55	0.083	0.738
7	67	0.137	1.218
8	53	0.129	1.147
9	61	0.123	1.093
10	58	0.064	0.569
11	53	0.083	0.738
12	55	0.094	0.836
Rata-rata	56	0.236	2.096

Lampiran 4. Data Kadar Air dan Berat Jenis

	Kulit					Akar				
	berat awal (gr)	berat akhir (gr)	volume (ml)	berat jenis(gr/cm3)	kadar air	berat awal (gr)	berat akhir (gr)	volume (ml)	berat jenis(gr/cm3)	kadar air
P1 P1	3.3201	2.0019	3	0.6673	65.8474	5.0032	3.0019	5	0.60038	66.66778
P1 P2	3.1002	1.7066	2	0.8533	81.6594	1.0052	0.6006	2	0.3003	67.36597
P1 P3	5.2008	3.1003	5	0.6201	67.7515	2.1345	1.3201	2	0.66005	61.6923
P2 P1	9.701	5.802	6	0.9669	67.2119	7.4052	4.6005	5	0.9201	60.9651
P2 P2	7.101	5.013	10	0.5013	41.6590	9.3269	5.4007	13	0.4154	72.6980
P2 P3	4.200	3.013	5	0.6027	39.3874	8.0068	4.5017	10	0.4502	77.8617
P3 P1	2.034	1.201	4	0.3002	69.4178	1.6002	1.0019	2	0.5010	59.7165
P3 P2	3.421	2.202	4	0.5505	55.3910	1.5001	1.0055	2	0.5028	49.1895
P3 P3	4.700	3.101	5	0.6202	51.5721	9.0081	5.0096	15	0.3340	79.8168
P4 P1	5.0009	3.0106	4	0.7527	66.1097	3.7503	2.5067	4	0.6267	49.6110
P4 P2	3.8008	2.4119	3	0.8040	57.5853	3.2400	2.1000	3	0.7000	54.2857
P4 P3	5.5203	3.2006	4	0.8002	72.4770	5.0057	3.0038	4	0.7510	66.6456
P5 P1	4.7001	2.6006	4	0.6502	80.7314	10.9400	7.7100	8	0.9638	41.8936
P5 P2	3.1001	2.6004	3	0.8668	19.2163	2.7004	1.9400	2	0.9700	39.1959
P5 P3	3.4008	2.3007	3	0.7669	47.8159	4.4006	3.2200	5	0.6440	36.6646
P6 P1	4.0231	3.6003	6	0.6001	11.7435	12.4900	9.5109	10	0.9511	31.3230
P6 P2	2.5008	1.8081	3	0.6027	38.3109	13.3000	9.5009	10	0.9501	39.9867
P6 P3	3.1008	2.0082	3	0.6694	54.4069	3.0002	2.1004	3	0.7001	42.8395
P7 P1	7.010	4.000	10	0.4000	75.2456	18.0100	11.0061	13	0.8466	63.6365
P7 P2	6.001	4.009	6	0.6682	49.6882	17.5200	10.0074	13	0.7698	75.0704
P7 P3	5.301	4.323	8	0.5404	22.6227	15.2345	8.0019	9	0.8891	90.3860

P8 P1	9.5100	5.5200	10	0.5520	72.2826	1.9017	1.4001	3	0.4667	35.8260
P8 P2	5.0300	3.7000	8	0.4625	35.9459	18.0072	11.9005	12	0.9917	51.3147
P8 P3	7.1300	4.4011	8	0.5501	62.0050	2.0064	1.5004	2	0.7502	33.7243
P9 P1	6.9031	5.7501	8	0.7188	20.0518	9.1007	5.0029	10	0.5003	81.9085
P9 P2	5.0834	2.7003	7	0.3858	88.2532	1.8002	1.0079	2	0.5040	78.6090
P9 P3	3.9041	2.2006	4	0.5502	77.4107	1.6005	1.0083	3	0.3361	58.7325
P10 P1	7.3005	4.5091	10	0.4509	61.9059	10.1800	7.1200	8	0.8900	42.9775
P10 P2	4.4001	3.2913	5	0.6583	33.6888	10.1700	7.2000	8	0.9000	41.2500
P10 P3	6.5002	3.5056	10	0.3506	85.4233	12.5400	8.3400	9	0.9267	50.3597
P11 P1	3.001	1.700	5	0.3400	76.5249	4.2002	2.5009	4	0.6252	67.9475
P11 P2	4.163	2.301	6	0.3835	80.9414	16.89	11.0500	12	0.9208	52.8507
P11 P3	5.100	3.412	7	0.4874	49.4739	11.08	9.5700	10	0.9570	15.7785
P12 P1	2.5005	1.5009	2	0.7505	66.6000	3.1063	2.0045	3	0.6682	54.9663
P12 P2	3.5006	2.1117	4	0.5279	65.7717	2.5089	1.7108	3	0.5703	46.6507
P12 P3	2.9103	2.2001	3	0.7334	32.2804	3.7632	2.7007	4	0.6752	39.3417

Lampiran 5. Data Pengamatan Daun

Sampel	Daun			
	berat (gr)	panjang (cm)	tebal (cm)	lebar (cm)
P1 P1	0.69	12.6	0.1	5.1
P1 P2	0.49	14.4	0.1	5
P1 P3	0.79	13	0.1	6.1
P2 P1	0.66	12.5	0.1	5.7
P2 P2	0.83	15.5	0.1	6.2
P2 P3	0.93	15	0.2	6.9
P3 P1	0.32	12.5	0.1	4.00
P3 P2	0.48	15.5	0.2	5.8
P3 P3	0.72	15	0.1	6.2
P4 P1	0.80	14.1	0.2	6.9
P4 P2	0.96	13.7	0.1	6.0
P4 P3	0.80	12.8	0.1	6.3
P5 P1	0.87	14.0	0.1	5.5
P5 P2	0.85	16.0	0.2	6.8
P5 P3	0.86	13.2	0.1	6.0
P6 P1	0.82	18	0.2	7.1
P6 P2	0.85	15	0.2	6.8
P6 P3	1.09	14	0.1	6.2
P7 P1	0.39	15.1	0.1	5.2
P7 P2	0.45	14	0.1	6.1
P7 P3	0.37	11.5	0.1	4.5
P8 P1	0.83	17	0.2	7.2
P8 P2	0.43	15.1	0.1	6
P8 P3	0.43	17.7	0.1	6.1
P9 P1	0.78	15	0.1	6.4
P9 P2	0.54	14.5	0.1	5
P9 P3	1.15	17	0.1	6.5
P10 P1	0.53	11.5	0.1	5.5
P10 P2	0.86	17	0.1	6.1
P10 P3	0.92	17	0.1	6.5
P11 P1	0.62	15.4	0.2	6.7
P11 P2	1.29	20	0.2	7
P11 P3	1.09	18.3	0.2	6.9
P12 P1	1.08	17.6	0.1	6.2
P12 P2	0.84	16.3	0.2	7
P12 P3	0.78	15.6	0.2	7.2

Lampiran 6. Analisis Korelasi Karakter Morfologi

		Correlations											
		Elevasi (mdpl)	Kelembaban (%)	Suhu ©	panjang daun (cm)	lebar daun (cm)	Berat jenis Kulit	Kadar air kulit	Berat Jenis Akar	Kadar Air Akar	Tinggi(m)	Diameter (m)	Volume pohon (m3)
Elevasi (mdpl)	Pearson Correlation	1	-0.482	0.322	-0.507	-0.409	0.261	-0.22	0.17	-0.05	-0.17	0.07	0.171
	Sig. (2-tailed)		0.112	0.307	0.092	0.187	0.413	0.502	0.61	0.88	0.6	0.83	0.595
Kelembaban (%)	Pearson Correlation	-0.482	1	-.843**	0.143	0	-0.513	0.349	-.578*	0.23	0.24	-0.09	-.743**
	Sig. (2-tailed)	0.112		0.001	0.657	0.999	0.088	0.265	0.05	0.47	0.46	0.79	0.006
Suhu ©	Pearson Correlation	0.322	-.843**	1	-0.045	-0.102	0.223	-0.22	0.41	-0.02	0.07	0.18	.589*
	Sig. (2-tailed)	0.307	0.001		0.889	0.753	0.486	0.501	0.19	0.96	0.84	0.57	0.044
panjang daun (cm)	Pearson Correlation	-0.507	0.143	-0.05	1	.707*	-0.484	0.047	0.27	-.601*	-0.22	-0.34	-0.04
	Sig. (2-tailed)	0.092	0.657	0.889		0.01	0.111	0.885	0.4	0.04	0.5	0.28	0.911
lebar daun (cm)	Pearson Correlation	-0.409	0	-0.1	.707*	1	0.022	-0.17	0.5	-.663*	-.577*	-0.52	0.086
	Sig. (2-tailed)	0.187	0.999	0.753	0.01		0.946	0.605	0.1	0.02	0.05	0.08	0.789
Berat jenis Kulit	Pearson Correlation	0.261	-0.513	0.223	-0.484	0.022	1	-0.02	0.22	-0.13	-0.51	-0.12	0.119
	Sig. (2-tailed)	0.413	0.088	0.486	0.111	0.946		0.952	0.49	0.69	0.09	0.7	0.712
Kadar air kulit	Pearson Correlation	-0.215	0.349	-0.22	0.047	-0.166	-0.02	1	-0.46	0.22	0.09	0.11	-.628*
	Sig. (2-tailed)	0.502	0.265	0.501	0.885	0.605	0.952		0.14	0.48	0.79	0.74	0.029
Berat Jenis Akar	Pearson Correlation	0.165	-.578*	0.409	0.267	0.495	0.22	-0.46	1	-0.57	-.615*	-0.51	.585*
	Sig. (2-tailed)	0.608	0.049	0.186	0.402	0.102	0.492	0.137		0.05	0.03	0.09	0.046
Kadar Air Akar	Pearson Correlation	-0.05	0.229	-0.02	-.601*	-.663*	-0.13	0.224	-0.57	1	.752**	.643*	-0.14
	Sig. (2-tailed)	0.879	0.474	0.956	0.039	0.019	0.687	0.483	0.05		0.01	0.02	0.673
Tinggi(m)	Pearson Correlation	-0.171	0.236	0.066	-0.217	-.577*	-0.506	0.087	-.615*	.752**	1	.828**	0.028
	Sig. (2-tailed)	0.596	0.46	0.838	0.497	0.05	0.093	0.789	0.03	0.01		0	0.931
Diameter (m)	Pearson Correlation	0.068	-0.087	0.183	-0.337	-0.523	-0.123	0.106	-0.51	.643*	.828**	1	0.161
	Sig. (2-tailed)	0.833	0.788	0.569	0.284	0.081	0.704	0.744	0.09	0.02	0		0.616
Volume pohon (m3)	Pearson Correlation	0.171	-.743**	.589*	-0.036	0.086	0.119	-.628*	.585*	-0.14	0.03	0.16	1
	Sig. (2-tailed)	0.595	0.006	0.044	0.911	0.789	0.712	0.029	0.05	0.67	0.93	0.62	

** . Correlation is significant at the 0.01 level (2-tailed).

* . Correlation is significant at the 0.05 level (2-tailed).

Lampiran 7. Nilai Heritabilitas/ Keragaman Genetik Karet

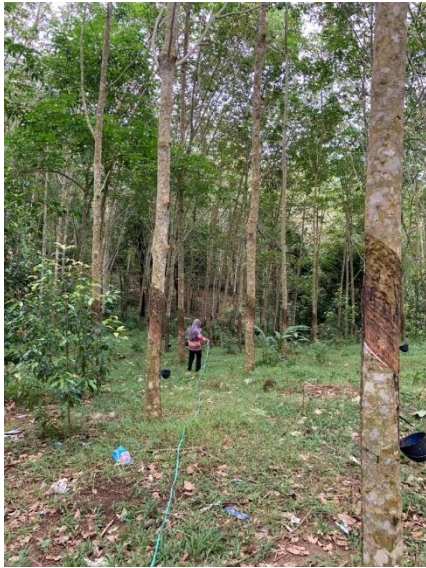
Monokultur Yang Telah di Sadap									
Karakter	1	2	3	4	5	6	7	8	9
Kulit_BJ_<_ 0.630	1	0	1	0	1	1	1	1	0
Kulit_BJ_>_ 541	0	1	0	1	0	0	0	0	1
Kulit_KA_<_ 59.984	0	0	0	0	1	1	0	1	1
Kulit_KA_>_ 93.459	1	1	1	1	0	0	1	0	0
Kulit_Warna_Hue_5Y	1	0	0	0	0	0	0	0	0
Kulit_Warna_Hue_5 YR	0	0	0	0	0	1	0	0	0
Kulit_Warna_Hue_7.5 YR	0	1	1	0	1	0	1	1	1
Kulit_Warna_Value_<_ 5444	0	1	1	0	0	0	0	0	0
Kulit_Warna_Value_>_ 5.44	1	0	0	1	1	1	1	1	1
Kulit_Warna_Chroma_<_ 2.667	0	0	0	0	0	0	0	0	0
Kulit_Warna_Chroma_>_ 2.667	1	1	1	1	1	1	1	1	1
Kuning	1	0	0	0	0	0	0	0	0
merah coklat gelap	0	0	0	1	1	1	0	0	0
merah kekuningan	0	1	1	0	0	0	1	1	1
Akar_BJ_<_ 0.515	0	1	0	1	1	1	1	1	1
Akar_BJ_>_ 0.515	1	0	1	0	0	0	0	0	0
Akar_KA_<_ 75.713	1	1	1	0	1	0	1	1	0
Akar_KA_>_ 75.713	0	0	0	1	0	1	0	0	1
Akar_Warna_Hue_7.5 YR	1	0	1	0	1	0	1	0	0
Akar_Warna_Hue_5Y	0	1	0	1	0	0	0	0	0
Akar_Warna_Hue_5YR	0	0	0	0	0	1	0	1	1
Akar_Warna_Value_<_ 4.778	1	0	1	0	0	0	1	0	0
Akar_Warna_Value_>_ 4.778	0	1	0	1	1	1	0	1	1
Akar_Warna_Chroma_<_ 2.222	0	0	0	0	1	0	0	0	0
Akar_Warna_Chroma_>_ 2.222	1	1	1	1	0	1	1	1	1
kuning kemerahan	1	0	1	0	1	0	0	1	1
kuning	0	1	0	0	0	0	0	0	0
Kuning Pucat	0	0	1	0	0	1	0	0	0
merah kekuningan	0	0	0	0	0	0	1	0	0
Daun_Berat_<_ 0.658	0	1	0	0	0	0	1	1	0
Daun_Berat_>_ 0.658	1	0	1	1	1	1	0	0	1
Panjang_Daun_<_ 14.00	1	0	1	1	0	0	1	0	0
Panjang_daun_>_ 14.00	0	1	0	0	1	1	0	1	1
Tebal_daun_<_ 0.12	1	1	1	1	1	0	1	0	1
Tebal_daun_>_ 0.12	0	0	0	0	0	1	0	1	0
Lebar_daun_<_ 6.0	1	0	0	1	1	0	0	0	0
Lebar_daun_>_ 6.0	1	1	1	0	0	1	1	1	1
Daun_Warna_Hue_7.5 GY	1	1	1	1	1	1	1	1	1
Daun_Warna_Value_<_ 3.11	0	0	0	0	0	0	0	0	0
Daun_Warna_Value_>_ 3.11	1		1	1	1	1	1	1	1
Daun_Warna_Chroma_<_ 3.33	1	0	1	1	0	0	0	0	0
Daun_Warna_Chroma_>_ 3.33	1	1	1	1	1	1	1	1	1
gelap	1	1	1	1	1	1	1	1	1
Diameter_<_ 3.06	1	1	1	0	0	0	1	1	1
Diameter_>_ 3.06	0	0	0	1	1	1	0	0	0
Ttot_<_ 9.44	0	1	1	1	0	0	0	0	0
Ttot_>_ 9.44	1	0	0	0	1	1	1	1	1
Tbc_<_ 3.38	1	1	1	1	0	1	0	0	0
Tbc_>_ 3.38	0	0	0	0	1	0	1	1	1
Volume_<_ 1.34	0	0	0	1	1	1	1	1	1
volume_>_ 1.34	1	1	1	0	0	0	0	0	0

Monokultur Yang Belum di Sadap									
Kulit_BJ_ < 0.724	0	0	0	1	1	1	1	1	1
Kulit_BJ_ >= 724	1	1	1	0	0	0	0	0	0
Kulit_KA_ < 49.822	0	0	0	0	1	1	1	1	0
Kulit_KA_ >= 49.822	1	1	1	1	0	0	0	0	1
Kulit_Warna_Hue_ 7.5 YR	1	1	1	1	1	1	1	0	0
Kulit_Warna_Hue_ 5 Y	0	0	0	0	0	0	1	1	1
Kulit_Warna_Value_ <= 6.56	1	0	0	1	0	0	0	1	1
Kulit_Warna_Value_ >= 6.56	0	1	1	0	1	1	1	0	0
Kulit_Warna_Chroma_ <= 2.22	1	1	1	1	0	1	1	1	1
Kulit_Warna_Chroma_ >= 2.22	0	0	0	0	1	0	0	0	0
merah kuning gelap	1	1	1	1	1	1	0	0	0
kuning gelap	0	0	0	0	0	0	0	1	1
Akar_BJ_ < 0.86	0	1	0	0	1	1	1	1	1
Akar_BJ_ >= 0.86	1	0	1	1	0	0	0	0	0
Akar_KA_ < 44.71	0	0	0	1	0	0	1	1	0
Akar_KA_ >= 44.71	1	1	1	0	1	1	0	0	1
Akar_Warna_Hue_ = 2.5 GY	1	1	1	1	1	1	1	1	1
Akar_Warna_Value_ <= 5.7	0	0	0	0	1	1	0	1	1
Akar_Warna_Value_ >= 5.7	1	1	1	1	0	0	1	0	0
Akar_Warna_Chroma_ <= 4.9	1	1	1	1	0	0	1	0	0
Akar_Warna_Chroma_ >= 4.9	0	0	0	0	1	1	0	1	1
Putih	1	1	0	1	1	1	1	1	1
merah kekuningan	0	0	1	0	0	0	0	0	0
Daun_Berat_ <= 0.87	1	0	1	1	1	1	1	1	0
Daun_Berat_ >= 0.87	0	1	0	0	0	0	0	0	1
Panjang_Daun_ <= 14.53	1	1	1	1	0	1	0	0	1
Panjang_daun_ >= 14.53	0	0	0	0	1	0	1	1	0
Tebal_daun_ <= 0.144	1	1	1	1	0	1	0	0	1
Tebal_daun_ >= 0.144	0	0	0	0	1	0	1	1	0
Lebar_Daun_ <= 6.4	0	1	1	1	0	1	0	0	1
Lebar_Daun_ >= 6.44	1	0	0	0	1	0	1	1	0
Daun_Warna_Hue_ = 7.5 GY	1	1	1	1	1	1	1	1	1
Daun_Warna_Value_ = 3	1	1	1	1	1	1	1	1	1
Daun_Warna_Chroma_ <= 2.9	1	0	1	0	0	0	1	1	1
Daun_Warna_Chroma_ >= 2.9	0	1	0	1	1	1	0	0	0
Gelap	1	1	1	1	1	1	1	1	1
Diameter_ <= 0.138	1	1	0	1	0	0	0	0	1
Diameter_ >= 0.138	0	0	1	0	1	1	1	1	0
Ttot_ <= 5.63	1	0	0	0	1	0	0	0	1
Ttot_ >= 5.63	0	1	1	1	0	1	1	1	0
Tbc_ <= 2.93	0	1	1	0	0	0	1	0	1
Tbc_ >= 2.93	1	0	0	1	1	1	0	1	0
Volume_ <= 1.66	1	1	1	1	1	1	0	0	0
volume_ >= 1.66	0	0	0	0	0	0	1	1	1

Agroforestri Yang Telah di Sadap									
Kulit_BJ_<_ 0.536	1	0	1	0	1	1	0	1	0
Kulit_BJ_>_ 0.536	0	1	0	1	0	0	1	0	1
Kulit_KA_<_ 55.945	0	1	1	0	1	0	1	0	1
Kulit_KA_>_ 55.945	1	0	0	1	0	1	0	1	0
Kulit_Warna_Hue_5 YR	1	1	1	0	0	0	0	0	0
kulit warna hue_5 Y	0	0	0	1	0	1	1	1	1
Kulit_Warna_Hue_5 YP	0	0	0	0	1	0	0	0	0
Kulit_Warna_Value_<_ 5.33	1	1	1	0	0	1	0	1	0
Kulit_Warna_Value_>_ 5.33	0	0	0	1	1	0	1	0	1
Kulit_Warna_Chroma_<_ 4	0	0	0	1	1	1	1	1	1
Kulit_Warna_Chroma_>_ 4	1	1	1	0	0	0	0	0	0
putih kekuningan	1	1	1	0	0	0	0	0	0
kuning gelap	0	0	0	1	1	1	1	1	1
Akar_BJ_<_ 0.673	0	0	1	1	1	0	0	0	1
Akar_BJ_>_ 0.673	1	1	0	0	0	1	1	1	0
Akar_KA_<_ 6.245	1	0	0	1	0	1	0	0	1
Akar_KA_>_	0	1	1	0	1	0	1	1	0
Akar_Warna_Hue_7.5 YR	1	1	1	0	0	0	1	1	1
Akar_Warna_Hue_5 YR	0	0	0	1	1	1	0	0	0
Akar_Warna_Value_<_ 4.33	0	0	0	1	1	1	0	0	1
Akar_Warna_Value_>_	1	1	1	0	0	0	1	1	0
Akar_Warna_Chroma_<_ 2.44	0	0	0	0	1	0	0	0	1
Akar_Warna_Chroma_>_ 2.44	1	1	1	1	0	1	1	1	0
kuning kemerahan	1	1	1	1	1	1	1	1	1
Daun_Berat_<_ 0.595	1	1	1	0	1	1	0	1	1
Daun_Berat_>_ 0.595	0	0	0	1	0	0	1	0	0
Panjang_Daun_<_ 15.2	1	1	1	0	1	0	1	1	0
Panjang_daun_>_ 15.2	0	0	0	1	0	1	0	0	1
Tebal_daun_<_ 0.1	1	1	1	0	1	1	1	1	1
Tebal_daun_>_ 0.1	0	0	0	1	0	0	0	0	0
Lebar_daun_<_ 5.89	1	0	1	0	0	0	0	1	0
Lebar_daun_>_ 5.89	0	1	0	1	1	1	1	0	1
Daun_Warna_Hue_	1	1	1	1	1	1	1	1	1
Daun_Warna_Value_<_ 4.33	0	0	0	1	1	1	1	1	1
Daun_Warna_Value_>_	1	1	1	0	0	0	0	0	0
Daun_Warna_Chroma_<_ 2.66	0	0	0	1	1	1	1	1	1
Daun_Warna_Chroma_>_	1	1	1	0	0	0	0	0	0
hijau gelap	1	1	1	1	1	1	1	1	1
Diameter_<_ 0.168	1	1	0	0	0	0	1	0	1
Diameter_>_ 0.168	0	0	1	1	1	1	0	1	0
Ttot_<_ 9.360	0	1	1	0	0	1	1	0	1
Ttot_>_ 9.360	1	0	0	1	1	0	0	1	0
Tbc_<_ 3.566	0	1	1	1	0	1	0	0	1
Tbc_>_ 3.56	1	0	0	0	1	0	1	1	0
Volume_<_ 0.870	1	1	0	1	1	1	1	1	1
volume_>_ 0.870	0	0	1	0	0	0	0	0	0

Agroforestri Yang Telah di Sadap									
Karakter	1	2	3	4	5	6	7	8	9
Kulit_BJ < 0.514	1	0	1	1	1	1	0	0	0
Kulit_BJ >	0	1	0	0	0	0	1	1	1
Kulit_KA < 61.041	0	1	0	0	0	0	0	0	1
Kulit_KA >	1	0	1	1	1	1	1	1	0
Kulit_Warna_Hue_5RP	1	0	1	0	0	0	0	0	0
Kulit_Warna_Hue_2.5Y	0	1	0	1	0	0	0	0	0
Kulit_Warna_Hue_5Y	0	0	0	0	0	0	0	1	0
Kulit_Warna_Hue_7.5YR	0	0	0	0	1	1	1	0	1
Kulit_Warna_Value < 6.222	0	1	0	1	1	1	1	1	0
Kulit_Warna_Value > 6.222	1	0	1	0	0	0	0	0	1
Kulit_Warna_Chroma < 2.667	1	1	1	0	0	0	1	1	1
Kulit_Warna_Chroma > 2.667	0	0	0	1	1	1	0	0	0
merah ungu gelap	1	0	1	0	0	0	0	0	0
putih	0	1	0	1	0	0	0	0	0
merah kuning kecoklatan	0	0	0		1	1	1	0	1
kuning	0	0	0	0	0	0	0	1	0
Akar_BJ < 0.581	0	1	0	0	1	0	1	1	1
Akar_BJ > 0.581	1	0	1	1	0	1	0	0	0
Akar_KA < 248.339	1	1	1	1	0	1	1	1	1
Akar_KA > 248.339	0	0	0	0	1	0	0	0	0
Akar_Warna_Hue_2.5Y	1	1	0	0	0	0	0	0	0
Akar_Warna_Hue_7.5YR	0	0	1	1	1	1	1	1	1
Akar_Warna_Value < 5.889	0	0	0	0	0	0	1	1	1
Akar_Warna_Value > 5.889	1	1	1	1	1	1	0	0	0
Akar_Warna_Chroma < 3.778	0	0	0	1	0	0	0	0	0
Akar_Warna_Chroma > 3.778	1	1	1	0	1	1	1	1	1
kuning kemerahan	0	0	1	1	1	1	1	1	1
kuning pucat	1	1	0	0	0	0	0	0	0
Daun_Berat < 0.890	1	1	0	1	0	0	0	1	1
Daun_Berat > 0.890	0	0	1	0	1	1	1	0	0
Panjang_Daun < 16.522	1	0	0	1	0	0	0	1	1
Panjang_daun > 16.522	0	1	1	0	1	1	1	0	0
Tebal_daun < 0.156	1	1	0	0	0	1	0	0	0
Tebal_daun > 0.156	0	0	1	1	1	0	1	1	1
Jumlah_helai_daun < 6.567	1	1	1	0	0	0	1	0	0
JUmlah_helai_daun > 6.567	0	0	0	1	1	1	0	1	1
Daun_Warna_Hue_7.5Y	1	1	1	1	1	1	1	1	1
Daun_Warna_Value < 3.11	0	1	1	1	1	1	1	1	1
Daun_Warna_Value > 3.11	1	0	0	0	0	0	0	0	0
Daun_Warna_Chroma < 3.556	0	0	0	0	0	1	1	1	0
Daun_Warna_Chroma > 3.556	1	1	1	1	1	0	0	0	1
Hijau gelap	1	1	1	1	1	1	1	1	1
Diameter < 0.245	0	1	1	1	0	1	1	0	1
Diameter > 0.245	1	0	0	0	1	0	0	1	0
Ttot < 10.216	0	0	0	1	1	1	0	1	0
Ttot > 10.216	1	1	1	0	0	0	1	0	1
Tbc < 3.724	0	0	0	1	0	0	1	0	1
Tbc > 3.724	1	1	1	0	1	1	0	1	0
Volume < 1.311	0	0	0	1	1	1	0	0	1
volume > 1.311	1	1	1	0	0	0	1	1	0

Lampiran 8 Dokumentasi Penelitian



Pembuatan Plot



Pengukuran Diameter



Pengukuran Tinggi



Pohon Pengukuran Suhu



Pengambilan daun



Pengambilan akar



Pengambilan Kulit



Pengamatan warna sampel



Pengukuran berat akar



Pengukuran tebal daun



Pengukuran lebar daun



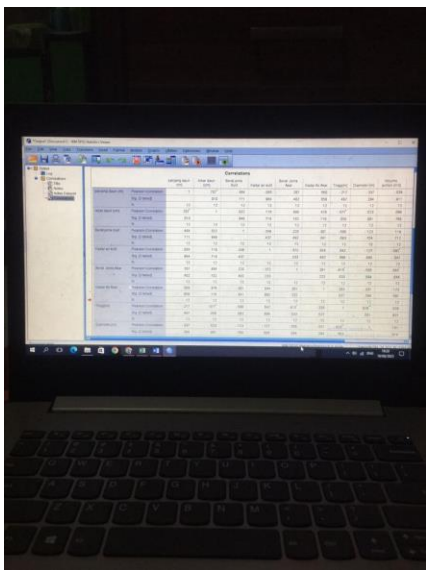
Mengoven sampel



Pengukuran berat sampel



Pengukuran volume



Analisis data menggunakan SPSS



Heatmap dengan Rstudio