

## DAFTAR PUSTAKA

- Arafat, Yassir, M Saleh, Pallu Farouk, and Maricar Rita Lopa. 2016. "Hydrodynamics and Morphological Changes Numerical Model of the Jeneberang Estuary." *International Journal of Innovative Research in Advanced Engineering (IJIRAE)* 3 (08): 21–29.
- Bambang, Triadmodjo. 1999. *Teknik Pantai*. Beta Offset.
- Dhi. 2013. "MIKE 21 & MIKE 3 Flow Model FM Hydrodynamic Module," 14.
- DHI. 2020. "MIKE 21 Flow Model FM Hydrodynamic Module Scientific Documentation," 14.
- Hatta, Mukhsan Putra, Muhammad Arsyad Thaha, and Marthen P. Lakatua. 2018. "Simulation Model Pattern Distribution Sediment at Ambon Bay, Indonesia." In *MATEC Web of Conferences*. Vol. 203. EDP Sciences. <https://doi.org/10.1051/mateconf/201820301009>.
- Ichsari, Lintang Fauzia, Gentur Handoyo, Heryoso Setiyono, Aris Ismanto, Jarot Marwoto, Muh Yusuf, and Azis Rifai. 2020. "Studi Komparasi Hasil Pengolahan Pasang Surut Dengan 3 Metode (Admiralty, Least Square Dan Fast Fourier Transform) Di Pelabuhan Malahayati, Banda Aceh." *Indonesian Journal of Oceanography* 2 (2): 121–28. <https://doi.org/10.14710/ijoce.v2i2.7985>.
- kamma, Riswal, Muh Saleh Pallu, Muh Arsyad Thaha, Muh Arsyad Thaha, Farauk Maricar, Rita Tahir Lopa, Mukhsan Putra Hatta, et al. 2021. "Penyuluhan Mitigasi Bencana Pada Kawasan Sempadan Pantai Galesong Utara Kabupaten Takalar." *JURNAL TEPAT: Teknologi Terapan Untuk Pengabdian Masyarakat* 4 (2): 252–60. [https://eng.unhas.ac.id/tepat/index.php/Jurnal\\_Tepat/article/view/215](https://eng.unhas.ac.id/tepat/index.php/Jurnal_Tepat/article/view/215).
- Kurniawan, Alamsyah, Seng Keat Ooi, Stef Hummel, and Herman Gerritsen. 2011. "Sensitivity Analysis of the Tidal Representation in Singapore Regional Waters in a Data Assimilation Environment." *Ocean Dynamics* 61 (8): 1121–36. <https://doi.org/10.1007/s10236-011-0415-6>.
- Liang, Bingchen, Zhuxiao Shao, Yajie Wu, Hongda Shi, and Zhen Liu. 2017. "Numerical Study to Estimate the Wave Energy under Wave-Current Interaction in the Qingdao Coast, China." *Renewable Energy* 101: 845–55.

<https://doi.org/10.1016/j.renene.2016.09.015>.

- Maulana, Firly, Amir Hamzah Muhiddin, Mahatma Lanuru, Wasir Samad, and Marzuki Ukkas. 2023. "Distribution of Bottom Sediment Before and After Reclamation At Center Point of Indonesia (Cpi) Makassar City." *Jurnal Ilmu Kelautan* *SPERMONDE* 9 (1): 10–19. <https://doi.org/10.20956/jiks.v9i1.19929>.
- Parsapour-Moghaddam, Parna, Colin D. Rennie, and Jonathan Slaney. 2018. "Hydrodynamic Simulation of an Irregularly Meandering Gravel-Bed River: Comparison of MIKE 21 FM and Delft3D Flow Models." *E3S Web of Conferences* 40: 1–8. <https://doi.org/10.1051/e3sconf/20184002004>.
- Puspita, A. I.D., M. S. Pallu, M. A. Thaha, and F. Maricar. 2020. "The Effect of Wave Reflection Coefficient to the Breaker Parameter on OWEC Breakwater." *IOP Conference Series: Earth and Environmental Science* 419 (1). <https://doi.org/10.1088/1755-1315/419/1/012135>.
- Puspita, A. I.D., M. A. Thaha, and B. Hidayah. 2022. "2D Modeling of Current Patterns and Sediment Patterns on Pasir Beach, Kebumen." *IOP Conference Series: Earth and Environmental Science* 1117 (1). <https://doi.org/10.1088/1755-1315/1117/1/012068>.
- Putra Hatta, Mukhsan. 2018. "Study of the Characteristics of the Sea Water Zone of the Estuary Zone on the Coast of Makassar." *International Journal of Innovative Science and Research Technology*. Vol. 3. [www.ijisrt.com](http://www.ijisrt.com)29.
- Riandi, Richi, Apriansyah Apriansyah, and Risiko Risiko. 2022. "Pengukuran Kecepatan Arus Permukaan Dengan Metode Langrangian Di Estuari Mempawah." *Manfish Journal* 3 (1): 72–79. <https://doi.org/10.31573/manfish.v2i2.384>.
- Siagian, Benny Tyson, Muhammad Helmi, Denny Nugroho Sugianto, Jurusan Ilmu Kelautan, Fakultas Perikanan, and Universitas Diponegoro. 2013. "Online Di : [Http://Ejournal-S1.Undip.Ac.Id/Index.Php/Jose](http://Ejournal-S1.Undip.Ac.Id/Index.Php/Jose) Kajian Pola Arus Akibat Perencanaan Reklamasi Pantai Di Perairan Makassar" 2: 98–110.
- Thaha, A., F. Maricar, A. F. Aboe, and A. I. Dwipuspita. 2015. "The Breakwater, from Wave Breaker to Wave Catcher." *Procedia Engineering* 116 (1): 691–

98. <https://doi.org/10.1016/j.proeng.2015.08.352>.

Wang, Weijie, and Yanmin Lu. 2018. "Analysis of the Mean Absolute Error (MAE) and the Root Mean Square Error (RMSE) in Assessing Rounding Model." *IOP Conference Series: Materials Science and Engineering* 324 (1). <https://doi.org/10.1088/1757-899X/324/1/012049>.

Water environment. 2019. "MIKE 21 Flow Model FM." *Mike: Hydrodynamic Module*.

[https://manuals.mikepoweredbydhi.help/2019/Coast\\_and\\_Sea/MIKE\\_FM\\_HD\\_2D.pdf](https://manuals.mikepoweredbydhi.help/2019/Coast_and_Sea/MIKE_FM_HD_2D.pdf).

## LAMPIRAN

## Saran - Saran dan Pertanyaan Pembimbing dan Penguji

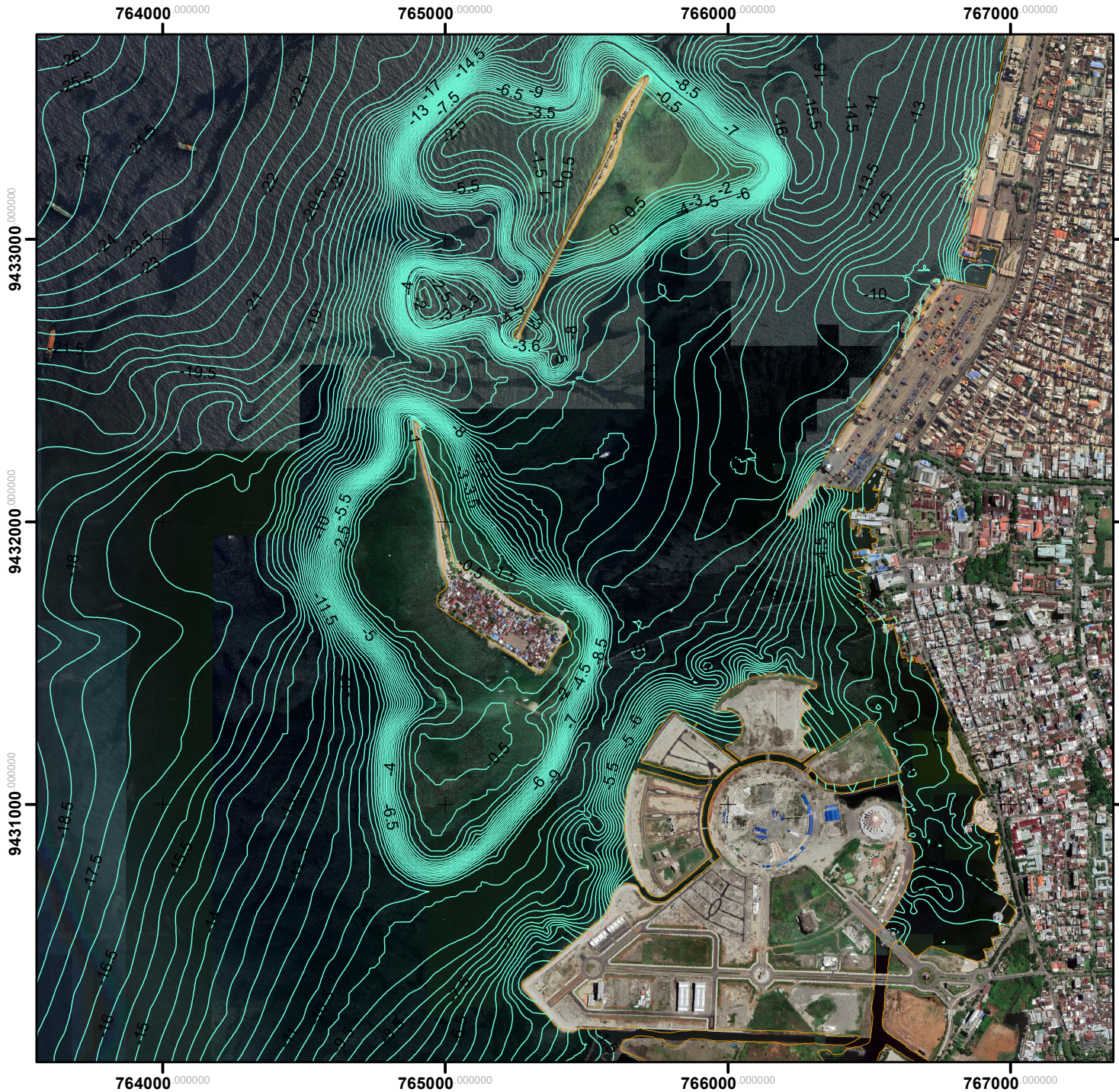
Nama: Nur Amri Yazid Ma.

Nim: D012192014

Program Studi: Magister Teknik Sipil S2

No.	Pembimbing dan Penguji	Pertanyaan	Jawaban
1.	Prof. Dr. Ir. Muhammad Arsyad Thaha., MT. IPM	<ul style="list-style-type: none"> <li>- Periksa nilai fromzalnya</li> </ul>	<ul style="list-style-type: none"> <li>- Nilai fromzal telah diperbaiki dimana pada kondisi sebelum reklamasi menggunakan data prediksi pasang surut dan pada saat setelah reklamasi menggunakan pengukuran pasang surut dengan nilai fromzal sebelum reklamasi 0.36 dan setelah reklamasi 1.43 dan ini artinya bahwa kondisi pasang surut lokasi penelitian condong ke harian ganda.</li> <li>-</li> </ul>
2.	Dr. Eng. Ir. Mukhsan Putra Hatta., ST., MT.	<ul style="list-style-type: none"> <li>- Pahami terhadap rumus yang digunakan</li> <li>- Pengecekan data-data yang digunakan</li> <li>- Pengolahan data</li> <li>- Penjelasan dan pahami pembahasan S2 dan M2 dicek kembali</li> </ul>	<ul style="list-style-type: none"> <li>- Pada kami telah mempelajari kembali rumus persamaan yang digunakan , baik pengolahan data dan penjelasan setiap telah kami perbaiki</li> <li>- Perbaiki pembahasan S2 terhadap nilai fromzal M2 kami sudah cek kembali dan sudah sesuai kondisi pasang surut condong ke harian ganda</li> </ul>
3.	Dr. Eng. Ir. Rita Tahir Lopa.,	<ul style="list-style-type: none"> <li>- Tulisan Ikuti</li> </ul>	<ul style="list-style-type: none"> <li>- Tulisan sudah</li> </ul>

	MT	<p>EYD</p> <ul style="list-style-type: none"> <li>- Reference et al ? diperbaiki</li> <li>- Komentar, review dan pembahasan</li> </ul>	<p>mengikuti EYD dan sudah diperbaiki</p> <ul style="list-style-type: none"> <li>- Reference et al sudah kami lakukan koreksi dengan menulis lengkap nama-nama penulis</li> <li>- Perbaikan terhadap pembahasan dan memasukkan terhadap persamaan penelitian terdahulu telah kami masukkan.</li> </ul>
4.	Dr. Ir. Riswal Karamma., ST., MT	<ul style="list-style-type: none"> <li>- Data angin ditambahkan dari metereologi stasiun paotere makassar</li> <li>- Nilai fromzal setelah reklamasi 1.84</li> <li>- Nilai fromzal sebelum reklamasi 0.3</li> </ul>	<ul style="list-style-type: none"> <li>- Untuk data angin dari metereologi stasiun paotere makassar sudah kami peroleh dan dominan mirip dengan hasil analisis dari data ecmwf.</li> <li>- Kami telah memperbaiki kondisi hasil memperiki nilai fromzal yang setelah reklamasi sudah memperoleh nilai 1.36 dan kondisi ini sudah masuk ke area pasang surut condong ke harian ganda</li> </ul>
5.	Dr. Andi Ilda Dwipuspita., ST., MT	<ul style="list-style-type: none"> <li>- Tambahkan penjelasan terkait perubahan angin sebelum dan sesudah reklamasi</li> </ul>	<ul style="list-style-type: none"> <li>- Setelah kami memperbaiki data angin sebelum reklamasi kami memperoleh data angin dominan dari arah selatan, ini dikernakan telah memperbaiki persamaan yang digunakan sehingga arah angin sebelum reklamasi dan setelah reklamasi hampir sama</li> </ul>



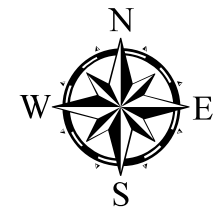
Program Studi Magister Teknik Sipil  
Fakultas Teknik  
Universitas Hasanuddin

Gambar:

**LAYOUT BHATIMETRI  
CENTER POINT OF INDONESIA**

**Legend**

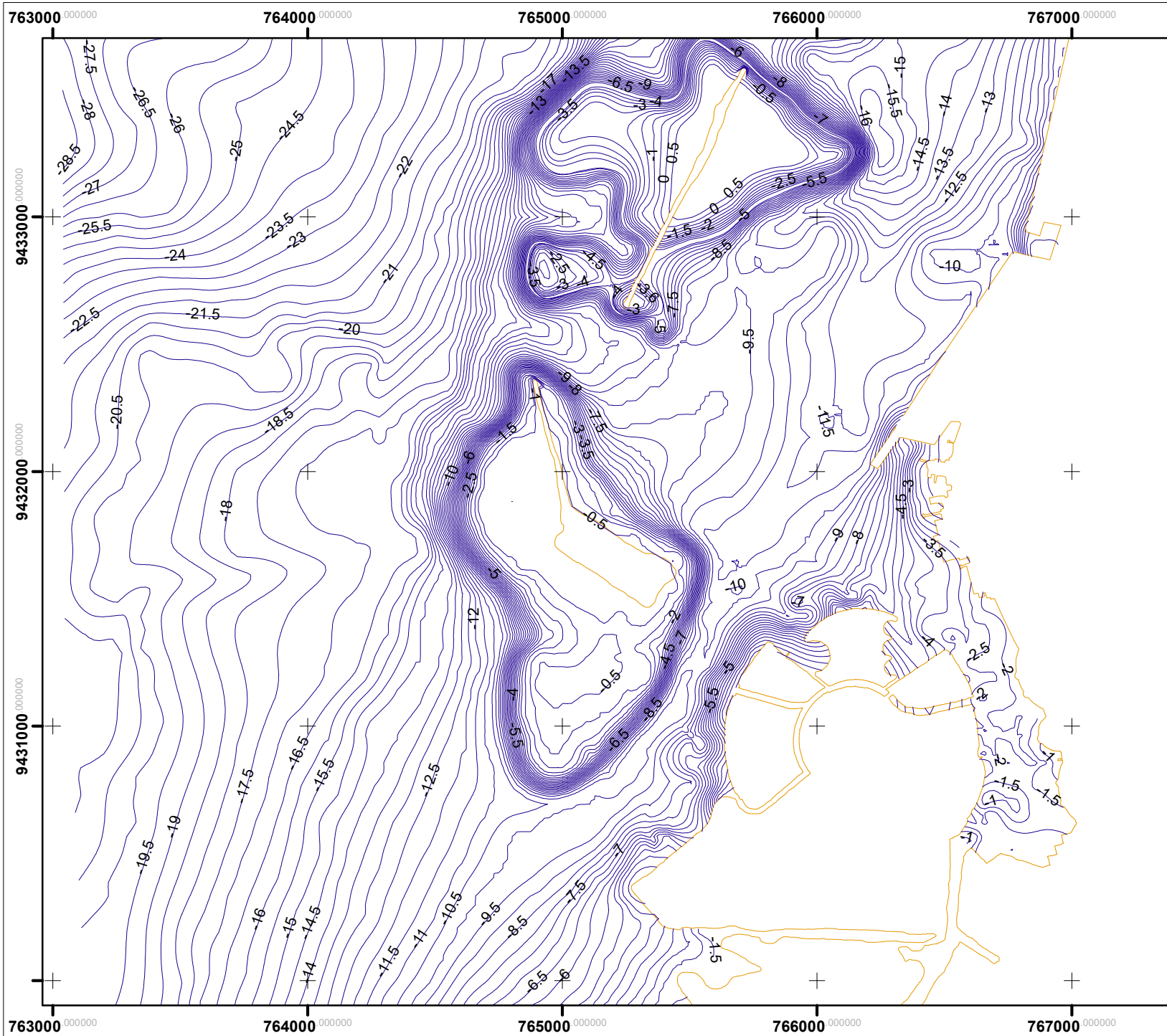
- Kontur Interval 0.5
- Garis Pantai



0 85 170 340 510 680  
Meters

Di Gambar: Nur Amri Yazid Ma.

Sumber :  
Citra Satelit Google Earth 2023

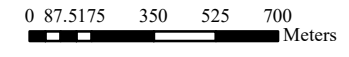
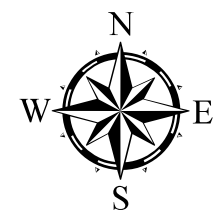


Program Studi Magister Teknik Sipil  
 Fakultas Teknik  
 Universitas Hasanuddin

Gambar:  
**LAYOUT BHATIMETRI  
 CENTER POINT OF INDONESIA**

**Legend**

- Kontur Interval 0.5
- Garis Pantai



Di Gambar: Nur Amri Yazid Ma.

Sumber :  
 Citra Satelit Google Earth 2023



## Data Bhatimetri Setelah Reklamasi Center Point Of Indonesia

No	Koordinat X	Koordinat Y	Kedalaman Z
1	766895.6114	9430855.42	-2.12
2	766893.5978	9430853.869	-2.31
3	766888.5778	9430846.386	-0.93
4	766888.1057	9430841.798	-0.95
5	766884.5336	9430824.089	-1.09
6	766875.1835	9430818.514	-1.08
7	766870.3913	9430818.467	-1.09
8	766784.3929	9430825.478	-1.44
9	766776.0954	9430828.412	-1.4
10	766784.1295	9430843.896	-1.48
11	766783.3108	9430850.363	-1.47
12	766776.7403	9430852.363	-1.39
13	766772.47	9430849.513	-1.42
14	766764.5944	9430849.608	-1.55
15	766757.4378	9430855.032	-1.38
16	766740.5575	9430858.768	-1.39
17	766726.0432	9430886.893	-1.54
18	766711.2943	9430902.844	-1.55
19	766706.5191	9430916.16	-1.58
20	766710.2462	9430933.803	-1.53
21	766719.2069	9430950.869	-1.65
22	766721.6304	9430984.662	-1.75
23	766715.7791	9431009.741	-1.8
24	766707.068	9431020.642	-1.65
25	766705.6778	9431034.419	-1.69
26	766713.2694	9431041.401	-1.74
27	766729.3266	9431040.014	-1.86
28	766745.8419	9431030.669	-1.64
29	766768.0375	9431006.799	-1.64
30	766773.0111	9430996.069	-1.81
31	766773.8169	9430983.241	-1.85
32	766789.254	9430961.539	-1.93
33	766791.4536	9430956.504	-1.86
34	766797.519	9430952.93	-1.81
35	766798.5842	9430941.241	-1.57
36	766819.8418	9430903.946	-1.61
37	766839.9438	9430889.719	-1.78
38	766859.3395	9430885.288	-1.1
39	766874.8012	9430878.932	-1.31
40	766882.0292	9430877.746	-0.91
41	766850.1966	9430861.09	-3.13

## Data Bhatimetri Setelah Reklamasi Center Point Of Indonesia

No	Koordinat X	Koordinat Y	Kedalaman Z
42	766850.8943	9430890.206	-1.32
43	766884.0634	9430872.962	-1.1
44	766923.0519	9430869.292	-0.73
45	766940.2799	9430869.514	-0.65
46	766943.0588	9430868.066	-0.68
47	766895.6114	9430855.42	-2.12
48	766893.5978	9430853.869	-2.31
49	766888.5778	9430846.386	-0.93
50	766888.1057	9430841.798	-0.95
51	766884.5336	9430824.089	-1.09
52	766875.1835	9430818.514	-1.08
53	766870.3913	9430818.467	-1.09
54	766784.3929	9430825.478	-1.44
55	766776.0954	9430828.412	-1.4
56	766784.1295	9430843.896	-1.48
57	766783.3108	9430850.363	-1.47
58	766776.7403	9430852.363	-1.39
59	766772.47	9430849.513	-1.42
60	766764.5944	9430849.608	-1.55
61	766757.4378	9430855.032	-1.38
62	766740.5575	9430858.768	-1.39
63	766726.0432	9430886.893	-1.54
64	766709.1154	9430907.479	-1.59
65	766706.7487	9430921.148	-1.55
66	766719.2069	9430950.869	-1.65
67	766721.6304	9430984.662	-1.75
68	766715.7791	9431009.741	-1.8
69	766707.068	9431020.642	-1.65
70	766705.6778	9431034.419	-1.69
71	766713.2694	9431041.401	-1.74
72	766729.3266	9431040.014	-1.86
73	766745.8419	9431030.669	-1.64
74	766768.0375	9431006.799	-1.64
75	766773.0111	9430996.069	-1.81
76	766773.8169	9430983.241	-1.85
77	766789.254	9430961.539	-1.93
78	766791.4536	9430956.504	-1.86
79	766797.519	9430952.93	-1.81
80	766798.5842	9430941.241	-1.57
81	766808.7986	9430920.068	-1.69
82	766819.8418	9430903.946	-1.61

## Data Bhatimetri Setelah Reklamasi Center Point Of Indonesia

No	Koordinat X	Koordinat Y	Kedalaman Z
83	766835.3049	9430892.092	-1.72
84	766879.4665	9430877.681	-0.92
85	766850.1966	9430861.09	-3.13
86	766850.8943	9430890.206	-1.32
87	766884.0634	9430872.962	-1.1
88	766923.0519	9430869.292	-0.73
89	766940.2799	9430869.514	-0.65
90	766943.0588	9430868.066	-0.68
91	766895.6114	9430855.42	-2.12
92	766893.5978	9430853.869	-2.31
93	766888.5778	9430846.386	-0.93
94	766888.1057	9430841.798	-0.95
95	766884.5336	9430824.089	-1.09
96	766875.1835	9430818.514	-1.08
97	766870.3913	9430818.467	-1.09
98	766784.3929	9430825.478	-1.44
99	766776.0954	9430828.412	-1.4
100	766784.1295	9430843.896	-1.48
101	766783.3108	9430850.363	-1.47
102	766776.7403	9430852.363	-1.39
103	766772.47	9430849.513	-1.42
104	766764.5944	9430849.608	-1.55
105	766757.4378	9430855.032	-1.38
106	766740.5575	9430858.768	-1.39
107	766726.0432	9430886.893	-1.54
108	766711.2943	9430902.844	-1.55
109	766707.9551	9430911.61	-1.56
110	766710.2462	9430933.803	-1.53
111	766719.2069	9430950.869	-1.65
112	766721.6304	9430984.662	-1.75
113	766715.7791	9431009.741	-1.8
114	766707.068	9431020.642	-1.65
115	766705.6778	9431034.419	-1.69
116	766713.2694	9431041.401	-1.74
117	766729.3266	9431040.014	-1.86
118	766745.8419	9431030.669	-1.64
119	766768.0375	9431006.799	-1.64
120	766773.0111	9430996.069	-1.81
121	766773.8169	9430983.241	-1.85
122	766789.254	9430961.539	-1.93
123	766791.4536	9430956.504	-1.86

## Data Bhatimetri Setelah Reklamasi Center Point Of Indonesia

No	Koordinat X	Koordinat Y	Kedalaman Z
124	766797.519	9430952.93	-1.81
125	766798.5842	9430941.241	-1.57
126	766819.8418	9430903.946	-1.61
127	766839.9438	9430889.719	-1.78
128	766859.3395	9430885.288	-1.1
129	766874.8012	9430878.932	-1.31
130	766882.0292	9430877.746	-0.91
131	766850.1966	9430861.09	-3.13
132	766850.8943	9430890.206	-1.32
133	766884.0634	9430872.962	-1.1
134	766923.0519	9430869.292	-0.73
135	766940.2799	9430869.514	-0.65
136	766943.0588	9430868.066	-0.68
137	766895.6114	9430855.42	-2.12
138	766893.5978	9430853.869	-2.31
139	766888.5778	9430846.386	-0.93
140	766888.1057	9430841.798	-0.95
141	766884.5336	9430824.089	-1.09
142	766875.1835	9430818.514	-1.08
143	766870.3913	9430818.467	-1.09
144	766784.3929	9430825.478	-1.44
145	766776.0954	9430828.412	-1.4
146	766784.1295	9430843.896	-1.48
147	766783.3108	9430850.363	-1.47
148	766776.7403	9430852.363	-1.39
149	766772.47	9430849.513	-1.42
150	766764.5944	9430849.608	-1.55
151	766757.4378	9430855.032	-1.38
152	766740.5575	9430858.768	-1.39
153	766726.0432	9430886.893	-1.54
154	766711.2943	9430902.844	-1.55
155	766707.9551	9430911.61	-1.56
156	766710.2462	9430933.803	-1.53
157	766719.2069	9430950.869	-1.65
158	766721.6304	9430984.662	-1.75
159	766715.7791	9431009.741	-1.8
160	766707.068	9431020.642	-1.65
161	766705.6778	9431034.419	-1.69
162	766713.2694	9431041.401	-1.74
163	766729.3266	9431040.014	-1.86
164	766745.8419	9431030.669	-1.64

## Data Bhatimetri Setelah Reklamasi Center Point Of Indonesia

No	Koordinat X	Koordinat Y	Kedalaman Z
165	766768.0375	9431006.799	-1.64
166	766773.0111	9430996.069	-1.81
167	766773.8169	9430983.241	-1.85
168	766789.254	9430961.539	-1.93
169	766791.4536	9430956.504	-1.86
170	766797.519	9430952.93	-1.81
171	766798.5842	9430941.241	-1.57
172	766819.8418	9430903.946	-1.61
173	766839.9438	9430889.719	-1.78
174	766859.3395	9430885.288	-1.1
175	766874.8012	9430878.932	-1.31
176	766882.0292	9430877.746	-0.91
177	766850.1966	9430861.09	-3.13
178	766850.8943	9430890.206	-1.32
179	766884.0634	9430872.962	-1.1
180	766923.0519	9430869.292	-0.73
181	766940.2799	9430869.514	-0.65
182	766943.0588	9430868.066	-0.68
183	766701.0122	9430894.239	-2.08
184	766714.0294	9430901.544	-2.06
185	766721.5354	9430888.756	-1.95
186	766721.0146	9430859.453	-1.93
187	766700.4208	9430763.764	-1.15
188	766684.9897	9430725.225	-0.73
189	766659.1732	9430691.901	-0.69
190	766801.6896	9430661.475	-1
191	766826.5016	9430678.454	-1.33
192	766845.5133	9430704.562	-1.54
193	766848.457	9430729.19	-1.57
194	766839.8215	9430748.401	-1.61
195	766818.1442	9430768.457	-1.62
196	766786.4176	9430812.311	-1.83
197	766769.3102	9430826.415	-1.9
198	766711.6594	9430932.017	-2.05
199	766757.8339	9430977.839	-2.14
200	766787.2201	9431019.385	-2
201	766798.1962	9431041.405	-1.95
202	766798.0536	9431068.336	-1.72
203	766781.9655	9431111.584	-1.91
204	766762.8617	9431119.918	-1.99
205	766745.3663	9431119.4	-2.12

## Data Bhatimetri Setelah Reklamasi Center Point Of Indonesia

No	Koordinat X	Koordinat Y	Kedalaman Z
206	766685.0304	9431095.33	-2.11
207	766665.8535	9431093.075	-2.08
208	766665.8631	9431098.583	-1.89
209	766690.3132	9431113.691	-2.23
210	766695.2944	9431113.82	-2.19
211	766707.1314	9431105.235	-2.21
212	766714.0631	9431104.875	-2.22
213	766721.2981	9431108.492	-2.17
214	766728.1123	9431118.167	-2.26
215	766736.7599	9431155.191	-2.26
216	766735.4029	9431192.513	-2.19
217	766731.8182	9431200.891	-2.24
218	766713.4113	9431214.601	-2.28
219	766690.4059	9431220.799	-2.4
220	766673.0047	9431221.736	-2.39
221	766640.9059	9431216.905	-2.3
222	766620.7593	9431219.318	-2.5
223	766594.9765	9431242.117	-2.42
224	766577.488	9431264.068	-2.84
225	766568.8517	9431274.255	-2.81
226	766565.1646	9431293.743	-2.66
227	766579.516	9431340.195	-2.76
228	766595.4964	9431359.637	-2.83
229	766650.5399	9431409.934	-2.36
230	766664.4478	9431426.926	-2.07
231	766662.0539	9431448.134	-1.94
232	766637.0395	9431474.704	-1.95
233	766610.5704	9431477.271	-2.33
234	766598.1405	9431472.764	-2.56
235	766546.6609	9431435.076	-3.16
236	766492.2788	9431389.58	-3.1
237	766469.7579	9431374.197	-3.04
238	766456.5325	9431370.519	-3.03
239	766423.6437	9431370.948	-3.05
240	766370.2199	9431415.059	-4.36
241	766368.4278	9431428.197	-4.44
242	766371.5585	9431434.769	-4.39
243	766399.4599	9431465.007	-3.95
244	766452.5294	9431515.478	-3.68
245	766467.0041	9431535.723	-3.63
246	766473.7159	9431562.452	-3.65

## Data Bhatimetri Setelah Reklamasi Center Point Of Indonesia

No	Koordinat X	Koordinat Y	Kedalaman Z
247	766473.8545	9431587.509	-3.76
248	766463.7487	9431628.767	-3.88
249	766454.1947	9431636.843	-3.92
250	766438.3442	9431637.172	-4.02
251	766423.5433	9431627.546	-4.1
252	766372.46	9431574.276	-4.23
253	766364.9525	9431560.153	-4.26
254	766362.9269	9431552.454	-4.24
255	766366.3961	9431548.741	-4.13
256	766380.1782	9431544.108	-3.99
257	766401.3493	9431542.703	-3.91
258	766408.6374	9431533.875	-3.82
259	766407.0106	9431517.198	-3.79
260	766383.7012	9431495.678	-4.13
261	766353.4604	9431492.287	-4.49
262	766307.6485	9431498.644	-5.28
263	766272.0392	9431492.444	-5.7
264	766229.3192	9431492.076	-5.88
265	766184.4496	9431486.467	-4.03
266	766172.2467	9431489.23	-4.51
267	766164.5345	9431500.322	-6.59
268	766154.7052	9431505.97	-7.47
269	766134.7502	9431506.258	-7.61
270	766121.5433	9431501.606	-7.51
271	766079.985	9431479.737	-5.51
272	766041.9311	9431472.378	-6.78
273	766003.5787	9431456.433	-7.35
274	765960.0302	9431439.245	-8.75
275	765925.4808	9431419.845	-9.26
276	765902.6204	9431402.627	-9.34
277	765882.7828	9431392.797	-8.31
278	765835.835	9431389.06	-5.58
279	765819.6017	9431381.943	-4.89
280	765788.6335	9431359.08	-3.42
281	765770.6234	9431345.506	-3.36
282	765704.7698	9431299.377	-5.22
283	765683.3919	9431278.119	-5.23
284	765678.3144	9431261.158	-5.22
285	765678.4224	9431242.639	-4.41
286	765693.4034	9431214.586	-2.44
287	765686.8949	9431194.682	-2.42

## Data Bhatimetri Setelah Reklamasi Center Point Of Indonesia

No	Koordinat X	Koordinat Y	Kedalaman Z
288	765667.7452	9431170.077	-2.86
289	765594.3689	9431111.568	-4.94
290	765582.8542	9431090.746	-6.33
291	765583.9173	9431078.427	-6.2
292	765592.8495	9431070.233	-4.71
293	765618.8066	9431073.186	-3.03
294	765628.0265	9431079.587	-2.75
295	765634.5183	9431077.31	-2.41
296	765632.9163	9431061.291	-2.03
297	765605.6357	9431018.958	-3.03
298	765563.082	9430982.951	-5.39
299	765534.2918	9430952.151	-8.44
300	765534.3791	9430934.031	-8.64
301	765540.3135	9430910.296	-8.14
302	765559.4868	9430879.121	-6.71
303	765586.9705	9430854.378	-4.39
304	765595.3589	9430837.256	-4.02
305	765598.5326	9430810.945	-4.17
306	765591.6008	9430784.662	-5.08
307	765578.4453	9430769.985	-6.26
308	765568.7282	9430764.124	-6.28
309	765547.1967	9430758.065	-7.17
310	765510.0052	9430758.669	-8.46
311	765486.364	9430749.113	-8.08
312	765454.2614	9430725.345	-8.12
313	765406.7941	9430704.194	-8.58
314	765379.948	9430697.813	-8.79
315	765367.8796	9430689.067	-8.86
316	765350.3329	9430668.861	-8.89
317	765344.7081	9430656.808	-8.83
318	765411.4724	9430653.173	-8.14
319	765420.6431	9430640.545	-7.84
320	765429.2029	9430618.841	-7.79
321	765430.2428	9430606.272	-7.62
322	765425.4923	9430587.761	-6.91
323	765405.1213	9430553.962	-5.45
324	765393.7453	9430543.479	-5.24
325	765372.1921	9430534.556	-5.52
326	765365.8588	9430534.709	-5.79
327	765363.8808	9430539.696	-6.23
328	765367.2213	9430554.929	-7.12



## Data Bhatimetri Setelah Reklamasi Center Point Of Indonesia

No	Koordinat X	Koordinat Y	Kedalaman Z
329	765396.4203	9430600.102	-7.91
330	765489.2141	9430772.564	-7.99
331	765497.7736	9430789.224	-8.45
332	765500.9465	9430795.249	-8.27
333	766224.2989	9431487.449	-4.42
334	766242.7351	9431496.254	-5.94
335	766285.6235	9431517.812	-5.89
336	766326.3686	9431538.747	-4.6
337	766356.9486	9431555.63	-4.26
338	766368.2597	9431557.609	-4.09
339	766395.6178	9431552.508	-3.86
340	766436.9238	9431551.444	-3.62
341	766456.8202	9431535.558	-3.5
342	766468.7159	9431530.756	-3.45
343	766571.3367	9431507.251	-2.76
344	766596.1587	9431491.467	-2.43
345	766623.3598	9431462.339	-2.16
346	766630.5376	9431447.761	-2.14
347	766629.2519	9431430.369	-2.25
348	766624.3918	9431421.142	-2.36
349	766590.2834	9431395.212	-2.77
350	766551.2017	9431380.076	-2.89
351	766537.6287	9431369.527	-2.83
352	766525.2504	9431346.27	-2.08
353	766524.9519	9431317.05	-3.3
354	766534.4497	9431294.072	-2.67
355	766547.1696	9431275.431	-2.58
356	766568.1214	9431259.995	-2.67
357	766598.0797	9431256.117	-2.54
358	766608.1448	9431257.136	-1.78
359	766686.1426	9431278.784	-2.3
360	766709.818	9431276.673	-2.09
361	766734.7723	9431260.703	-1.86
362	766751.3818	9431232.18	-1.73
363	766758.9829	9431200.436	-1.83
364	766768.9641	9431188	-1.65
365	766769.9036	9431160.602	-1.72
366	766757.5596	9431152.395	-1.86
367	766722.4418	9431147.084	-2.1
368	766699.0671	9431137.695	-2.1
369	766666.4913	9431115.162	-1.58

## Data Bhatimetri Setelah Reklamasi Center Point Of Indonesia

No	Koordinat X	Koordinat Y	Kedalaman Z
370	766654.4015	9431103.755	-1.57
371	766650.067	9431098.597	-2.26
372	766642.9869	9431080.169	-1.93
373	766642.59	9431060.195	-1.93
374	766647.8092	9431044.003	-1.97
375	766669.3305	9431029.576	-1.88
376	766687.6474	9431006.712	-1.86
377	766705.4624	9431000.784	-1.87
378	766785.9977	9430998.209	-1.91
379	766796.0227	9430991.532	-1.68
380	766802.3847	9430975.409	-1.61
381	766796.4374	9430960.278	-2.03
382	766785.2523	9430950.5	-1.99
383	766748.6696	9430942.078	-1.96
384	766712.0567	9430940.315	-1.79
385	766699.5338	9430934.668	-2.06
386	766693.5794	9430908.808	-1.81
387	766702.0963	9430890.507	-1.95
388	766690.102	9430874.992	-1.74
389	766686.4202	9430860.557	-1.68
390	766694.2017	9430847.276	-1.71
391	766709.2045	9430839.847	-1.71
392	766799.6569	9430834.388	-1.63
393	766829.9128	9430827.105	-1.53
394	766856.6654	9430805.62	-1.37
395	766867.5745	9430780.447	-1.28
396	766867.2283	9430770.999	-1.31
397	766861.3708	9430759.086	-1.27
398	766801.2666	9430708.16	-1.01
399	766787.5909	9430693.902	-0.81
400	766786.9348	9430693.488	-0.91
401	766789.9721	9430689.971	-0.81
402	766781.2177	9430677.614	-0.79
403	766596.074	9430540.805	-1.14
404	766610.4901	9430551.378	-0.72
405	766606.3645	9430542.788	-0.79
406	766589.5077	9430535.08	-0.84
407	766576.8133	9430525.112	-0.77
408	766560.292	9430509.27	-0.83
409	766544.4329	9430474.861	-1.33
410	766542.2852	9430446.566	-1.27

## Data Bhatimetri Setelah Reklamasi Center Point Of Indonesia

No	Koordinat X	Koordinat Y	Kedalaman Z
411	766532.2731	9430394.802	-1.32
412	766535.3927	9430345.428	-1.29
413	766539.6114	9430340.469	-1.08
414	766540.7564	9430329.336	-0.99
415	766525.9548	9430237.056	-1.34
416	766519.9112	9430205.178	-0.93
417	766518.7753	9430189.288	-0.92
418	766530.5628	9430197.061	-1.03
419	766538.9903	9430193.32	-1.04
420	766539.5967	9430189.413	-0.98
421	766532.2054	9430185.509	-0.81
422	766526.6156	9430191.651	-0.78
423	766524.143	9430215.465	-0.68
424	766526.8437	9430237.442	-0.71
425	766533.7426	9430316.723	-1.17
426	766536.7279	9430331.791	-1.22
427	766539.6376	9430335.647	-1.17
428	766543.2434	9430332.888	-0.98
429	766536.1561	9430330.198	-1.14
430	766533.4934	9430335.966	-1.08
431	766535.1149	9430342.359	-1.22
432	766539.8021	9430358.7	-1.31
433	766542.5519	9430370.151	-1.25
434	766541.6033	9430383.342	-1.32
435	766551.5603	9430470.531	-1.3
436	766553.7678	9430488.216	-1.27
437	766559.7342	9430505.48	-1.6
438	766564.9569	9430513.788	-1.2
439	766587.013	9430529.488	-1.1
440	766616.077	9430559.202	-0.99
441	766670.8546	9430647.557	-2.42
442	766665.0337	9430600.462	-2.42
443	766640.1629	9430610.516	-2.42
444	766616.8795	9430622.157	-2.42
445	766768.7506	9430537.491	-2.42
446	766761.3423	9430520.557	-2.42
447	766752.3464	9430503.624	-2.42
448	766728.0047	9430544.37	-2.22
449	766718.4797	9430526.378	-2.22
450	766704.7213	9430500.978	-2.22
451	766668.7379	9430497.274	-2.27

## Data Bhatimetri Setelah Reklamasi Center Point Of Indonesia

No	Koordinat X	Koordinat Y	Kedalaman Z
452	766675.6171	9430528.495	-2.27
453	766688.8463	9430553.366	-2.27
454	766690.963	9430566.595	-2.27
455	766662.3879	9430576.649	-2.27
456	766656.5671	9430562.891	-2.27
457	766642.8087	9430522.145	-2.27
458	766641.2212	9430501.507	-2.27
459	766861.355	9430531.67	-2.27
460	766892.5759	9430524.261	-2.27
461	766912.6842	9430509.445	-2.27
462	766823.2549	9430492.511	-2.27
463	766658.6837	9430614.22	-1.47
464	766404.8155	9430167.057	-1.47
465	766322.7945	9430167.057	-1.47
466	766222.2527	9430173.671	-1.47
467	766062.1794	9430173.671	-1.27
468	765902.1062	9430182.932	-1.27
469	765771.1372	9430184.255	-1.27
470	765619.0014	9430182.932	-1.27
471	765547.5638	9430182.932	-1.27
472	766497.4199	9430102.234	-1.27
473	766466.9927	9430003.015	-1.17
474	766363.805	9429887.921	-1.17
475	766313.5341	9429828.389	-1.17
476	766212.9922	9429690.806	-1.17
477	766123.0337	9429579.68	-1.17
478	766661.8722	9430925.45	-2.13
479	766661.8722	9430925.45	-2.11
480	766661.8722	9430925.45	-2.11
481	766661.8722	9430925.45	-2.16
482	766661.8729	9430925.634	-2.11
483	766661.6954	9430925.635	-2.13
484	766666.3947	9430948.113	-2.79
485	766666.0287	9430948.114	-2.52
486	766665.6619	9430947.931	-2.32
487	766665.1073	9430947.934	-2.38
488	766664.9187	9430947.934	-2.35
489	766664.5519	9430947.751	-2.35
490	766664.5526	9430947.936	-2.3
491	766664.3641	9430947.936	-2.27
492	766663.9973	9430947.753	-2.35

## Data Bhatimetri Setelah Reklamasi Center Point Of Indonesia

No	Koordinat X	Koordinat Y	Kedalaman Z
493	766663.8087	9430947.754	-2.35
494	766663.6202	9430947.755	-2.35
495	766663.4427	9430947.755	-2.3
496	766663.2541	9430947.756	-2.38
497	766662.888	9430947.758	-2.43
498	766662.5109	9430947.759	-2.38
499	766662.5109	9430947.759	-2.35
500	766662.3334	9430947.76	-2.41
501	766661.9563	9430947.761	-2.35
502	766661.9556	9430947.577	-2.32
503	766661.5888	9430947.394	-2.35
504	766661.3995	9430947.21	-2.43
505	766661.2214	9430947.026	-2.38
506	766660.8449	9430947.212	-2.38
507	766660.6674	9430947.213	-2.46
508	766660.6674	9430947.213	-2.46
509	766660.4782	9430947.029	-2.35
510	766660.2896	9430947.03	-2.38
511	766660.1114	9430946.846	-2.38
512	766659.9228	9430946.847	-2.35
513	766659.7336	9430946.663	-2.35
514	766659.5554	9430946.479	-2.35
515	766659.3661	9430946.296	-2.35
516	766658.8108	9430946.113	-2.3
517	766658.0669	9430945.932	-2.27
518	766657.8894	9430945.932	-2.3
519	766657.5122	9430945.934	-2.27
520	766657.5122	9430945.934	-2.32
521	766657.3355	9430946.119	-2.32
522	766657.3355	9430946.119	-2.32
523	766657.3362	9430946.303	-2.3
524	766657.1476	9430946.304	-2.35
525	766657.1476	9430946.304	-2.3
526	766656.959	9430946.305	-2.3
527	766656.7808	9430946.121	-2.3
528	766656.403	9430945.938	-2.27
529	766656.2255	9430945.939	-2.24
530	766655.6702	9430945.756	-2.22
531	766655.4816	9430945.757	-2.22
532	766655.1141	9430945.39	-2.27
533	766654.9249	9430945.206	-2.22

## Data Bhatimetri Setelah Reklamasi Center Point Of Indonesia

No	Koordinat X	Koordinat Y	Kedalaman Z
534	766654.7356	9430945.022	-2.22
535	766654.7356	9430945.022	-2.24
536	766654.5574	9430944.839	-2.19
537	766654.3675	9430944.471	-2.19
538	766654.1789	9430944.471	-2.24
539	766654.0007	9430944.287	-2.19
540	766653.6222	9430943.92	-2.19
541	766653.2554	9430943.737	-2.22
542	766652.8887	9430943.554	-2.19
543	766652.3333	9430943.372	-2.16
544	766651.9548	9430943.004	-2.11
545	766651.3995	9430942.822	-2.05
546	766651.032	9430942.455	-2.08
547	766650.6653	9430942.272	-2.05
548	766650.1099	9430942.089	-2.02
549	766649.7321	9430941.906	-2.05
550	766649.1775	9430941.908	-2.02
551	766648.6208	9430941.357	-2.02
552	766648.0647	9430940.991	-2.02
553	766647.5094	9430940.808	-1.97
554	766647.142	9430940.441	-1.94
555	766646.7759	9430940.442	-1.83
556	766646.5866	9430940.259	-1.83
557	766646.3974	9430940.075	-1.8
558	766646.0313	9430940.076	-1.75
559	766646.0313	9430940.076	-1.67
560	766645.8427	9430940.077	-1.61
561	766645.6652	9430940.078	-1.56
562	766645.6646	9430939.893	-1.53
563	766645.2881	9430940.079	-1.48
564	766645.1106	9430940.08	-1.39
565	766644.922	9430940.081	-1.42
566	766644.922	9430940.081	-1.34
567	766644.7335	9430940.081	-1.28
568	766644.7335	9430940.081	-1.28
569	766644.5553	9430939.898	-1.2
570	766644.5553	9430939.898	-1.17
571	766644.366	9430939.714	-1.17
572	766644.366	9430939.714	-1.17
573	766673.9359	9430888.709	-2
574	766673.9359	9430888.709	-1.97

## Data Bhatimetri Setelah Reklamasi Center Point Of Indonesia

No	Koordinat X	Koordinat Y	Kedalaman Z
575	766673.7585	9430888.71	-2
576	766673.7599	9430889.079	-2
577	766673.5713	9430889.08	-2.02
578	766673.2045	9430888.897	-1.94
579	766672.8267	9430888.714	-1.94
580	766672.4606	9430888.715	-1.91
581	766672.0946	9430888.716	-1.89
582	766671.5392	9430888.534	-1.91
583	766671.35	9430888.35	-1.89
584	766670.7953	9430888.352	-1.86
585	766670.43	9430888.538	-1.83
586	766670.2414	9430888.539	-1.78
587	766670.0521	9430888.355	-1.78
588	766669.8746	9430888.356	-1.78
589	766669.874	9430888.172	-1.75
590	766669.4954	9430887.804	-1.69
591	766669.1287	9430887.621	-1.67
592	766668.7619	9430887.438	-1.64
593	766668.5726	9430887.255	-1.61
594	766668.0166	9430886.888	-1.56
595	766667.6499	9430886.705	-1.53
596	766667.2713	9430886.337	-1.48
597	766667.0925	9430885.969	-1.48
598	766666.7146	9430885.786	-1.39
599	766666.5357	9430885.418	-1.37
600	766666.3465	9430885.235	-1.34
601	766666.1565	9430884.866	-1.28
602	766666.1551	9430884.498	-1.23
603	766665.9776	9430884.498	-1.2
604	766666.1544	9430884.313	-1.17
605	766666.153	9430883.945	-1.17
606	766651.8218	9430857.63	-2.49
607	766651.8218	9430857.63	-2.54
608	766638.5883	9430975.508	-2.27
609	766638.3991	9430975.325	-2.22
610	766638.033	9430975.326	-2.22
611	766637.4784	9430975.328	-2.24
612	766637.1012	9430975.33	-2.24
613	766636.7352	9430975.331	-2.19
614	766636.1805	9430975.333	-2.27
615	766635.9926	9430975.518	-2.32

## Data Bhatimetri Setelah Reklamasi Center Point Of Indonesia

No	Koordinat X	Koordinat Y	Kedalaman Z
616	766635.438	9430975.52	-2.27
617	766635.072	9430975.522	-2.22
618	766634.8827	9430975.338	-2.27
619	766634.7045	9430975.154	-2.22
620	766634.3274	9430975.156	-2.22
621	766634.1492	9430974.972	-2.24
622	766633.7713	9430974.789	-2.24
623	766633.4039	9430974.421	-2.22
624	766633.0378	9430974.423	-2.22
625	766632.85	9430974.608	-2.19
626	766632.6614	9430974.609	-2.22
627	766632.4832	9430974.425	-2.22
628	766632.2939	9430974.241	-2.24
629	766632.1054	9430974.242	-2.3
630	766631.9272	9430974.058	-2.24
631	766631.7386	9430974.059	-2.32
632	766631.55	9430974.06	-2.27
633	766631.3712	9430973.692	-2.19
634	766631.1812	9430973.323	-2.22
635	766630.8144	9430973.14	-2.24
636	766630.6259	9430973.141	-2.24
637	766630.0698	9430972.774	-2.3
638	766629.5138	9430972.408	-2.19
639	766628.7637	9430970.567	-2.08
640	766628.3962	9430970.199	-2.02
641	766628.0288	9430969.832	-2.05
642	766627.8395	9430969.648	-2.11
643	766627.8388	9430969.464	-2
644	766627.6495	9430969.28	-1.97
645	766627.4714	9430969.096	-1.97
646	766627.4707	9430968.912	-2
647	766627.47	9430968.728	-2
648	766627.47	9430968.728	-1.94
649	766627.4707	9430968.912	-1.91
650	766627.6482	9430968.911	-1.86
651	766627.6488	9430969.096	-1.83
652	766628.0239	9430968.541	-1.83
653	766628.0225	9430968.172	-1.83
654	766628.3865	9430967.618	-1.83
655	766628.573	9430967.064	-1.83
656	766628.7463	9430965.957	-1.8



## Data Bhatimetri Setelah Reklamasi Center Point Of Indonesia

No	Koordinat X	Koordinat Y	Kedalaman Z
657	766628.9321	9430965.219	-1.75
658	766629.1186	9430964.665	-1.69
659	766629.2898	9430963.004	-1.45
660	766629.1096	9430962.268	-1.34
661	766628.9175	9430961.346	-1.17
662	765615.7826	9430716.591	-1.17
663	765615.7826	9430716.591	-1.45
664	766203.184	9431501.253	-4.47
665	766209.7986	9431534.326	-5.47
666	766211.1215	9431558.139	-5.97
667	766213.7673	9431597.826	-6.47
668	766213.7673	9431624.285	-6.47
669	766171.4339	9431636.191	-7.47
670	766144.9755	9431637.514	-7.47
671	766131.7463	9431600.472	-7.47
672	766131.7463	9431574.014	-6.97
673	766133.0693	9431551.524	-6.47
674	766133.0693	9431531.68	-5.97
675	766127.7776	9431485.378	-3.47
676	766102.6421	9431473.472	-2.47
677	766072.215	9431462.889	-1.97
678	766047.0795	9431497.284	-4.97
679	766047.0795	9431548.878	-6.97
680	766036.4961	9431593.858	-8.47
681	766023.267	9431624.285	-8.97
682	766011.3607	9431648.097	-9.47
683	765957.121	9431649.156	-9.47
684	765921.1376	9431642.806	-9.47
685	765904.2042	9431604.705	-9.47
686	765910.5542	9431541.205	-8.47
687	765925.3709	9431486.172	-6.47
688	765925.4808	9431419.845	-4.97
689	765904.2042	9431369.755	-2.97
690	765859.7541	9431448.072	-7.97
691	765817.4207	9431530.622	-9.47
692	765762.3873	9431587.772	-9.97
693	765703.1205	9431558.139	-9.97
694	765656.5537	9431536.972	-9.97
695	765650.2037	9431484.055	-9.97
696	765677.7204	9431439.605	-9.47
697	765709.4705	9431397.272	-7.97

## Data Bhatimetri Setelah Reklamasi Center Point Of Indonesia

No	Koordinat X	Koordinat Y	Kedalaman Z
698	765730.6372	9431363.405	-4.97
699	765745.4539	9431293.555	-1.97
700	765629.037	9431282.971	-8.47
701	765595.1703	9431344.355	-9.97
702	765569.7702	9431422.672	-9.97
703	765540.1368	9431439.605	-9.97
704	765495.6867	9431354.938	-8.47
705	765531.6701	9431302.022	-9.97
706	765552.8368	9431263.921	-9.97
707	765582.4702	9431227.938	-9.97
708	765603.6369	9431177.138	-5.47
709	765552.8368	9431094.588	-8.97
710	765493.5701	9431153.855	-9.97
711	765425.8366	9431208.888	-8.47
712	765404.6699	9431126.338	-9.47
713	765444.8866	9431079.771	-9.97
714	765485.1034	9431035.321	-9.97
715	765508.3868	9430921.021	-6.97
716	765444.8866	9430935.837	-8.47
717	765398.3199	9430984.521	-9.97
718	765317.8864	9431005.688	-8.97
719	765315.7697	9430957.004	-9.97
720	765311.5364	9430908.321	-9.97
721	765349.6364	9430872.337	-9.97
722	765383.5032	9430876.571	-8.97
723	765423.7199	9430853.287	-8.47
724	765510.5034	9430832.121	-6.47