

## DAFTAR PUSTAKA

- Adham, M., Kurniawan, A.N., Muhtadi, A.K., Roezin, A., Hermani, B., Gondhowiardjo, S., Tan, I.B., Middledorp, J.M., 2012. Nasopharyngeal carcinoma in indonesia: epidemiology, incidence, signs, and symptoms at presentation. *Chinese Journal of Cancer*, 31(4), pp.185-96.
- Adham, M., Gondhowiardjo, S., Soediro, R., Jack, Z., Lisnawati, Witjaksono, F., Manikam N.R.M., Octovia, L.I., Nuhonni, S.A., Indriani, Pratiwi, K.B.H.P., 2017. Panduan penatalaksanaan KNF. Komite Penanggulangan Kanker Nasional Kementerian Kesehatan Republik Indonesia.
- American Joint Committee of Cancer, 2018. AJCC cancer staging form supplement. 8th ed. [ebook] Chicago: American Joint Committee of Cancer. Available at: <https://cancerstaging.org/references-tools/deskreferences/Pages/Cancer-Staging-Forms.aspx> [Accessed 15 May 2020].
- Bacanakgil, B.H., Kaban, I., Unal, F., Guven, R., Sahin, E., Yildirim, S.G., 2018. Predictive value of hematological inflammatory markers in endometrial neoplasia. *Asian Pacific Journal of Cancer Prevention*, 19, pp.1529-32.
- Bae, S.J., Cha, Y.J., Yoon, C., 2020. Prognostic value of neutrophil-to-lymphocyte ratio in human epidermal growth factor receptor 2-negative breast cancer patients who received neoadjuvant chemotherapy. *Scientific Reports Nature Research*, 10(13078), pp.1-10.
- Bahremani, M.H., Mortazavi, N., Novin, K., Ameri, A., Razzaghi, Z., 2020. Blood neutrophil-to-lympocyte ratio as a predictor of response to chemotherapy in head-and-neck cancers. *Journal of Head & Neck Physicians and Surgeons*, 7(1), pp.20-5.

- Bray, F., Ferlay, J., Soerjomataram, I., Siegel, R.L., Torre, L.A., Jemal, A., 2018. Global cancer statistics 2018: globocan estimates of incidence and mortality worldwide for 36 cancers in 185 countries. *Cancer J Clin*, 68, pp.394-424.
- Cahyanur, R., Irawan, C., Rahmawati, S., Nasman, N., 2019. The association between neutrophil-to-lympocyte ratio and treatment response in nasopharyngeal cancer patients of cipto mangunkusumo general hospital in 2015-2018: a retrospective cohort study. *Journal of Global Oncology*, 5, pp.123.
- Chae, S., Kang, K.M., Kang, H.J., et al., 2018. Neutrophil-lymphocyte ratio predicts response to chemotherapy in triple-negative breast cancer. *Current Oncology*, 25(2), pp.e113-9.
- Cheesman, K. and Burdett, E., 2011. Anatomy of the nose and pharynx. [online] *anaesthesiajournal.co.uk*. Available at: [https://www.anaesthesiajournal.co.uk/article/S1472-0299\(11\)00086-5/fulltext](https://www.anaesthesiajournal.co.uk/article/S1472-0299(11)00086-5/fulltext) [Accessed 15 May 2020].
- Chen, C., Lin, X., Xu, Y., Bai, P., Xiao, Y., Pan, Y., Li, C., Lin, Z., Zhang, M., Chen, Y., 2017. Unidimensional measurement may be superior to assess primary tumor response after neoadjuvant chemotherapy for nasopharyngeal carcinoma. *Oncotarget*, 8(29), pp.46937-45.
- Chen, Y., Chan, A., Le, Q., Blanchard, P., Sun, Y. and Ma, J., 2019. Nasopharyngeal carcinoma. *The Lancet*, 394(10192), pp.64-80.
- Colevas, A.D., Yom, S.S., Pfister, D.G., et al., 2018. Nccn guidelines insights head and neck cancers, version 1.2018 featured updates to the nccn guidelines. *J Natl Compr Canc Netw*, 16(5), pp.479-90.
- Dahlan, M.S., 2018. *Statistik untuk kedokteran dan kesehatan*. Jakarta: Penerbit Salemba Medika.
- Dhingra, P., Dhingra, S. and Dhingra, D., 2014. *Diseases of ear, nose and throat & head and neck surgery*. 6th ed. New Delhi, India: Elsevier.

- Eisenhauer, E.A, Therasse, P., Bogaerts, J., Schwartz, L.H., Sargent, D., Ford, R., Dancey, J., Arbuck, S., Gwyther, S., Mooney, M., Rubinstein, L., Shankar, L., Dodd, L., Kaplan, R., Lacombe, D., Verweij, J., 2009. New response evaluation criteria in solid tumours: Revised RECIST guideline (version 1.1). *European Journal of Cancer*, 45, pp.228-47.
- Fadillah, D., 2017. *Insidensi penyakit kanker di rsup dr. wahidin sudirohusodo makassar periode januari 2015-2017*. Makassar: Universitas Hasanuddin.
- Faot, N.E. & Pradjoko, I., 2017. Rasio neutrofil-limfosit sebelum kemoterapi dan respons obyektif kemoterapi pasien kanker paru dengan kemoterapi berbasis platinum. *J Respir Indo*, 37(4), pp.293-8.
- Faria, S.S., Fernandes Jr, P.C., Silva, M.J.B., Lima, V.C., Fontes, W., Junior, R.F., Eterovic, A.K., Forget, P., 2016. The neutrophil-to-lymphocyte ratio: a narrative review. *Ecancer*, 10(702), pp.1-12.
- Farhat, Adham, M., Dewi, Y.A., Indrasari, S.R., 2020. KNF. Jakarta: EGC.
- Fernandes, B., Cherrett, C., Moryosef, L., Lau, N., Wykes, J., 2017. Nasopharyngeal carcinoma: knowledge amongst general practitioners in western sydney. *Journal of Community Medicine & Health Education*, 7(2), pp.1-5.
- Fles, R., Wildeman, M.A., Sulistiono, B., Haryana, S.M., Tan, I.B., 2010. Knowledge of general practitioners about nasopharyngeal cancer at the puskesmas in yogyakarta, indonesia. *BioMed Central*, 10(81), pp.1-6.
- Galdiero, M.R., Varricchi, G., Loffredo, S., Mantovani, A., Marone, G., 2017. Roles of neutrophils in cancer growth and progression. *Journal of Leukocyte Biology*, pp.1-8.
- Gong, J., Jiang, H., Shu, C., Hu, M.Q., Huang, Y., Liu, Q., Li, R.F., 2019. Prognostic value of lymphocyte-to-monocyte ratio in ovarian cancer: a meta-analysis. *Journal of Ovarian Research*, 12(51), pp.1-7.

- Gonzales, H., Hagerling, C., Werb, Z., 2020. Roles of the immune system in cancer: from tumor initiation to metastatic progression. *Genes & Development*, 32, pp.1267-84.
- Greten, F.R. and Grivnenikov, S.I., 2019. Inflammation and cancer: triggers, mechanisms, and consequences. *Immunity*, 51, pp.27-41.
- Gu, L., Li, H., Chen, L., Ma, X., Li, X., Gao, Y., Zhang, Y., Xie, Y., Zhang, X., 2016. Prognostic role of lymphocyte to monocyte ratio for patients with cancer: evidence from a systemic review and meta-analysis. *Oncotarget*, 7(22), pp.31926-42.
- Hirahara, T., Arigami, T., Yanagita, S., et al., 2019. Combined neutrophil-lymphocyte ratio and platelet-lymphocyte ratio predicts chemotherapy response and prognosis in patients with advanced gastric cancer. *BMC Cancer*, 19(672), pp.1-7.
- Howard, R., Kanetsky, P.A., Egan, K.M., 2019. Exploring the prognostic value of the neutrophil-to-lymphocyte ratio in cancer. *Scientific Reports*, 9, pp.1-10.
- Huszno, J. & Kolosza, Z., 2019. Prognostic value of the neutrophil-lymphocyte, platelet-lymphocyte and monocyte-lymphocyte ratio in breast cancer patients. *Oncology Letters*, 18, pp.6275-83.
- Kartika, O.D., Purwanto, P., Dewi, Y.A., 2019. Neutrophil to lymphocyte ratio within clinical staging of head and neck squamous cell carcinoma. *AMJ*, 5, pp.176-80.
- Kolegium Ilmu Kesehatan Telinga Hidung Tenggorok Bedah Kepala Dan Leher, 2015. Modul utama onkologi bedah kepala leher modul vii.5.2. KNF.
- Keohane, E.M., Otto, C.N., Walenga, J.M., 2020. *Rodak's hematology clinical principles and applications*. 6th ed. Canada: Elsevier.
- Lecot, P., Sarabi, M., Abrantes M.P., Mussard, J., Koenderman, L., Caux, C., Vermare, N.B., Michallet, M.C., 2019. Neutrophil heterogeneity in cancer: from biology to therapies. *Frontiers in Immunology*, 10(2155), pp.1-19.

- Li, J., Chen, S., Peng, S., Liu, Y., Xing, S., He, X., Chen, H., 2018. Prognostic nomogram for patients with nasopharyngeal carcinoma incorporating hematological biomarkers and clinical characteristics. *International Journal of Biological Sciences*, 14(5), pp.549-56.
- Liew, K.Y. & Zulkiflee, A.B., 2018. Neutrophil-lymphocyte ratios in the prognostication of primary non-metastatic nasopharyngeal carcinoma. *Brazilian Journal of Otorhinolaryngology*, 84(6), pp.764-71.
- Lin, G.N., Liu, P.P., Liu, D.Y., Peng, J.W., Xiao, J.J., Xia, Z.J., 2016. Prognostic significance of the pre-chemotherapy lymphocyte-to-monocyte ratio in patients with previously untreated metastatic colorectal cancer receiving folfox chemotherapy. *Chinese Journal of Cancer*, 35(5), pp.1-9.
- Liu, J., Wei, C., Tang, H., Liu, Y., Liu, W., Lin, C., 2020. The prognostic value of the ratio of neutrophils to lymphocytes before and after intensity modulated radiotherapy for patients with nasopharyngeal carcinoma. *Medicine*, 99(2), pp.1-7.
- Lu, A., Li, H., Zheng, Y., et al., 2017. Prognostic significance of neutrophil to lymphocyte ratio, lymphocyte to monocyte ratio, and platelet to lymphocyte ratio in patients with nasopharyngeal carcinoma. *Hindawi BioMed Research International*, pp.1-6.
- Maza, O.M., Berek, J.S., 2009. *Cancer immunology*. GLOWM, pp.1-28.
- Olingy, C.E., Dinh, H.Q., Hedrick, C.C., 2019. Monocyte heterogeneity and functions in cancer. *Journal of Leukocyte Biology*, 106, pp.309-322.
- Paier, F., Cataldo, V.D., Zei, G., Pasquetti, E.M., Cecchini, S., Meattini, I., Mangoni, M., Agresti, B., Iermano, C., Bonomo, P., Biti, G., 2012. Role of chemotherapy in nasopharyngeal carcinoma. *Oncology Reviews*, 6(e1), pp.1-6.
- Pfister, D.G., Spencer, S., Adelstein, D., et al., 2018. Nccn clinical practice guidelines in oncology (nccn guidelines) version 1.2018 panel members head and neck cancers. *National Comprehensive Cancer Network Inc*, pp.1-218.

- Purnamasari, P. & Rachmawati, B., 2018. Perbedaan neutrophil lymphocyte ratio, platelet lymphocyte ratio, dan monocyte lymphocyte ratio pada pasien diabetes mellitus tipe 2 dengan dan tanpa komplikasi kardiovaskular. *Medica Hospitalia*, 5(1), pp.31-5.
- Putera, G.D.A., Mulyawan, I.M., Sudartana, I.K., 2020. Intisari sains medism 11(3), pp.1354-8.
- Querol, E.U. & Rosales C., 2015. Neutrophils in cancer: two sides of the same coin. *Journal of Immunology Research*, pp.1-21.
- Rad, A. & Mytilinaios, D., 2020. Pharynx (throat) anatomy: muscles, arteries and nerves. Kenhub. [online] Available at: <https://www.kenhub.com/en/library/anatomy/the-pharynx> [Accessed 05 Sept 2020].
- Salehiniya, H., Mohammadian, M., Mohammadian-Hafshejani, A. and MahdaviFar, N., 2018. Nasopharyngeal cancer in the world: epidemiology, incidence, mortality and risk factors. *World Cancer Research Journal*, 5(1).
- Shah, J., Patel, S., Sigh, B., 2012. Jatin shah's head and neck surgery and oncology. Fourth Edition. Philadelphia, United States: Elsevier Mosby.
- Sethi, N., England, R.J.A., Zoysa, N.D., 2020. Head, neck, and thyroid surgery an introduction and practical guide. Florida, United States: CRC Press.
- Simo, R., Robinson, M., Lei, M., Sibtain, A., Hickey, S., 2016. Nasopharyngeal carcinoma: united kingdom national multidisciplinary guidelines. *The Journal of Laryngology & Otology*, Suppl.S2, pp.S97-103.
- Singh, N., Baby, D., Rajguru, J.P., Patil, P.B., Thakkannavar, S.S., Pujari, V.B., 2019. Inflammation and cancer. *Annals of African Medicine*, 18(3), pp.121-6.

- Stevenson, M.M & Petruzzelli, G.J. Nasopharyngeal cancer staging. [online] Available at: <https://emedicine.medscape.com/article/2048007-print>.
- Tabuchi, K., Nakayama, M., Nishimura, B., Hayashi, K. and Hara, A., 2011. Early detection of nasopharyngeal carcinoma. *International Journal of Otolaryngology*, pp.1-6.
- The Global Cancer Observatory, 2019. Nasopharynx. [online] Available at: <https://gco.iarc.fr/today/> [Accessed 15 May 2020].
- Treffers, L.W., Hiemstra, I.H., Kujipers, T.W., Berg, T.K.V.D., Matlung, H.L., 2016. Neutrophils in cancer. *Immunological Reviews*, 273, pp.312-8.
- Tsao, S.W., Yip, Y.L., Tsang, C.M., Pang, P.S., Lau, V.M.Y., Zhang, G., Lo, K.W., 2014. Etiological factors of nasopharyngeal carcinoma. *Oral Oncology*, 50, pp.330-8.
- World Health Organization, 2018. Cancer. [online] Available at: <https://www.who.int/en/news-room/fact-sheets/detail/cancer> [Accessed 15 May 2020].
- Wu, L., Li, C. and Pan, L., 2018. Nasopharyngeal carcinoma: a review of current updates. *Experimental and Therapeutic Medicine*, 15, pp.3687-3692.
- Wu, L., Saxena, S., Awaji, M., Singh, R.K., 2019. Tumor-associated neutrophils in cancer: going pro. *Cancer*, 11 (564), pp.1-20.
- Xie, S.H., Yu, I.T.S., Tse, L.A., Mang, O.W.K., Yue, L., 2013. Sex difference in the incidence of nasopharyngeal carcinoma in hong kong 1983-2008: suggestion of a potential protective role of oestrogen. *European Journal of Cancer*, 49, pp.150-5.
- Yang, S., Zhao, K., Ding, X., Jiang, H., Lu, H., 2019. Prognostic significance of hematological markers for patients with nasopharyngeal carcinoma: a meta-analysis. *Journal of Cancer*, 10, pp.2568-77.

- Yao, J., Zhu, F., Dong, J., Liang, Z., Yang, L., Chen, S., Zhang, W., Lawrence, W.R., Zhang, F., Wang, S., Sun, Y., Zhou, G., 2019. Prognostic value of neutrophil-to-lymphocyte ratio in advanced nasopharyngeal carcinoma: a large institution-based cohort study from an endemic area. *BMC Cancer*, 19(37), pp.1-8.
- Yin, J., Qin, Y., Luo, Y., Feng, M., Lang, J., 2017. Prognostic value of neutrophil-to-lymphocyte ratio for nasopharyngeal carcinoma. *Medicine*, 96(29), pp.1-6.



## Lampiran 1. Data Dasar Hasil Penelitian

No	Nama	RM	Tanggal Lahir	Usia (Tahun)	Sex	Histo PA (WHO)	Stadium	Regimen Kemoterapi	Pre Kemoterapi		Respon Terapi
									N/L	L/M	
1	NA	833696	01 Juli 1962	59	P	III	IV	Paclitaxel-Cisplatin	3.35	17.38	CR
2	FI	826335	31 Desember 1996	25	P	III	IV	Paclitaxel-Cisplatin	2.71	21.56	CR
3	AUB	821162	24 Desember 1957	64	L	III	III	Brexel-Carboplatin	4.57	13.2	CR
4	IR	829551	14 Januari 1988	33	L	III	III	Paclitaxel-Cisplatin	9.36	8.92	PR
5	MA	824069	03 Januari 1998	23	L	III	IV	Paclitaxel-Cisplatin	4.77	14.56	CR
6	SK	819717	05 Juni 1980	41	L	III	IV	Paclitaxel-Cisplatin	4.47	12.67	SD
7	SDL	852524	28 Oktober 1982	39	L	III	III	Paclitaxel-Cisplatin	3.28	3.41	SD
8	DB	840644	18 Mei 1965	56	L	III	IV	Paclitaxel-Cisplatin	13.53	1.10	SD
9	ER	851780	20 Oktober 1985	36	L	III	IV	Paclitaxel-Cisplatin	12.55	1.47	SD
10	IP	855229	29 September 1967	54	L	II	IV	Paclitaxel-Carboplatin	4.66	1.52	PR
11	PA	859355	03 Juni 1962	59	P	II	III	Brexel-Carboplatin	3.67	4.00	CR
12	SU	558486	15 Juni 1961	60	P	II	IV	Paclitaxel-Carboplatin	3.19	17.69	PR
13	DT	848800	01 Juni 1942	79	L	III	IV	Paclitaxel-Carboplatin	6.92	16.67	CR
14	HA	853898	18 Agustus 1970	51	L	II	IV	Paclitaxel-Carboplatin	4.90	2.45	CR
15	MYR	843975	01 Maret 1997	24	L	III	IV	Paclitaxel-Carboplatin	2.63	3.27	PR
16	RU	852204	08 April 1965	56	L	II	II	Paclitaxel-Cisplatin	1.90	3.94	CR
17	KA	854150	06 Juni 1976	45	L	II	IV	Paclitaxel-Cisplatin	4.27	1.81	CR
18	YD	863773	05 September 1978	43	L	III	IV	Brexel-Cisplatin	2.70	3.37	PR
19	SN	846786	07 Maret 1965	56	L	III	III	Paclitaxel-Cisplatin	2.34	3.92	CR
20	KA	846265	31 Desember 1972	49	L	III	III	Paclitaxel-Cisplatin	2.28	4.29	CR
21	BY	845346	17 Agustus 1967	54	L	II	II	Paclitaxel-Cisplatin	2.84	5.20	CR
22	BNAA	746089	14 September 1987	34	P	III	II	Brexel-Carboplatin	5.91	1.47	CR
23	AH	810956	12 Juni 1970	51	L	III	IV	Paclitaxel-Carboplatin	12.25	0.85	SD
24	SNA	749447	08 Pebruari 1983	38	P	II	IV	Paclitaxel-Cisplatin	3.84	2.18	SD
25	HJ	854784	26 Januari 1962	59	L	II	II	Paclitaxel-Cisplatin	3.21	3.78	PR
26	RO	848099	05 Oktober 1965	56	P	II	III	Paclitaxel-Carboplatin	1.54	4.67	CR
27	AB	854991	05 Januari 1958	63	L	II	IV	Brexel-Carboplatin	4.16	2.63	CR
28	SH	861843	01 Juni 2003	18	P	III	IV	Paclitaxel-Cisplatin	3.61	3.12	PR
29	DT	859624	20 Pebruari 1966	55	L	III	III	Brexel-Cisplatin	4.27	1.84	PR
30	MJ	862025	03 Maret 1987	34	P	III	IV	Brexel-Cisplatin	4.06	2.14	PR
31	AM	864774	01 Januari 1965	56	L	III	IV	Docetaxel-Carboplatin	6.10	1.59	SD

32	AMS	859322	31 Desember 1947	74	L	III	IV	Brexel-Carboplatin	2.21	2.78	PR
33	YS	864065	26 Juni 1967	54	L	III	II	Paclitaxel-Cisplatin	6.98	1.57	SD
34	BA	864193	12 September 1959	62	L	III	III	Brexel-Carboplatin	1.22	4.68	CR
35	IWS	877766	31 Desember 1960	61	L	III	II	Paclitaxel-Carboplatin	6.61	1.81	CR
36	LU	877936	24 Agustus 1969	52	L	III	II	Paclitaxel-Carboplatin	2.46	2.56	CR
37	MA	876527	05 Mei 1950	71	L	III	III	Paclitaxel-Carboplatin	4.43	1.50	CR
38	NYC	877554	09 November 1980	41	L	III	IV	Paclitaxel-Cisplatin	2.29	3.67	CR
39	AN	443467	12 Pebruari 1996	25	P	III	III	Paclitaxel-Cisplatin	3.62	2.10	PR
40	SH	876015	31 Desember 1965	56	P	II	II	Paclitaxel-Cisplatin	5.57	1.45	PR
41	KA	873036	04 Mei 1965	56	P	II	IV	Paclitaxel-Cisplatin	4.43	2.52	CR
42	LH	874984	25 Desember 1967	54	P	III	II	Paclitaxel-Cisplatin	1.38	5.60	PR
43	MRA	869633	16 Juni 1985	36	L	II	IV	Paclitaxel-Cisplatin	7.69	1.54	SD
44	LI	860830	02 Januari 1965	56	P	II	IV	Paclitaxel-Carboplatin	6.27	1.72	PR
45	SK	875369	23 Oktober 1955	66	L	III	IV	Paclitaxel-Carboplatin	1.35	3.48	PR
46	FIK	868576	10 Mei 1985	36	L	II	III	Paclitaxel-Cisplatin	1.68	3.29	PR
47	WD	873999	10 Juni 1986	35	L	III	IV	Paclitaxel-Cisplatin	1.36	4.12	PR
48	SPP	878277	19 Desember 1945	76	L	II	III	Paclitaxel-Carboplatin	4.51	2.50	PR
49	PDS	888693	09 November 1954	67	L	II	III	Paclitaxel-Cisplatin	5.40	4.12	PR
50	EFA	890033	01 Juli 1977	44	P	III	III	Paclitaxel-Carboplatin	3.06	2.65	PR
51	FMS	895405	16 Maret 1977	44	P	III	II	Paclitaxel-Cisplatin	6.16	2.47	SD
52	BA	861997	15 Mei 1968	53	L	III	IV	Paclitaxel-Cisplatin	1.89	3.54	PR
53	AS	890037	17 Mei 1975	46	L	III	III	Brexel-Carboplatin	5.09	1.89	PR
54	MU	841147	06 Oktober 1964	57	L	III	III	Paclitaxel-Carboplatin	4.12	1.67	CR
55	MJ	862025	03 Maret 1987	34	P	III	III	Brexel-Carboplatin	4.04	2.14	PR
56	MSDT	886805	17 September 1966	55	L	III	II	Paclitaxel-Cisplatin	6.23	2.62	SD
57	AKB	887080	02 Mei 1971	50	L	II	III	Paclitaxel-Cisplatin	2.25	4.04	CR
58	RU	888594	05 Pebruari 1998	23	P	III	II	Paclitaxel-Cisplatin	2.22	3.08	PR
59	YS	888511	24 Maret 1969	52	L	III	III	Paclitaxel-Cisplatin	3.10	2.51	CR
60	MAR	883229	07 Juni 1978	43	L	III	II	Brexel-Cisplatin	3.69	3.21	CR
61	CO	872527	03 Juli 1982	39	L	II	II	Paclitaxel-Cisplatin	5.90	1.80	CR
62	RH	887726	30 Januari 1981	40	L	II	IV	Paclitaxel-Cisplatin	2.56	1.83	CR
63	AA	887617	27 Juli 1970	51	L	II	II	Paclitaxel-Cisplatin	4.13	3.61	CR
64	SB	878220	15 Januari 1992	29	L	II	IV	Paclitaxel-Cisplatin	6.02	1.64	SD
65	FP	870888	15 Juli 1979	42	L	III	III	Paclitaxel-Cisplatin	2.20	5.00	CR
66	SU	891752	28 Maret 1984	37	L	III	III	Paclitaxel-Carboplatin	5.03	17.56	CR
67	MA	879588	28 Oktober 1967	54	L	III	IV	Brexel-Carboplatin	5.46	2.39	CR

68	BE	898532	13 April 1962	59	P	II	III	Paclitaxel-Cisplatin	1.88	18.44	CR
69	JS	883689	20 Agustus 1974	47	P	II	IV	Paclitaxel-Cisplatin	2.57	5.21	CR
70	RU	902822	01 Juli 1963	58	L	II	IV	Brexel-Carboplatin	2.21	2.74	CR
71	BT	884869	10 Oktober 1968	53	L	III	II	Brexel-Carboplatin	2.55	2.75	PR
72	ES	913565	07 Juni 2001	20	L	III	IV	Paclitaxel-Cisplatin	11.18	1.46	SD
73	MT	912117	31 Desember 1967	46	L	II	IV	Paclitaxel-Cisplatin	5.57	1.33	PR
74	MA	912668	18 Juni 1985	36	L	III	II	Brexel-Carboplatin	1.33	4.15	PR
75	SA	914425	10 Juni 1958	63	L	III	III	Brexel-Carboplatin	2.81	4.78	CR
76	HB	735516	27 Januari 1980	41	L	II	III	Paclitaxel-Cisplatin	5.25	1.16	CR
77	LI	860830	02 Januari 1965	56	P	III	III	Paclitaxel-Carboplatin	6.85	1.77	CR
78	KF	908982	23 Juni 1961	60	L	III	III	Paclitaxel-Cisplatin	5.92	1.76	CR
79	HM	910305	24 Mei 1958	63	P	III	II	Paclitaxel-Cisplatin	1.65	5.77	CR
80	MU	909719	10 November 1968	53	L	III	IV	Paclitaxel-Carboplatin	13.62	17.33	SD
81	DA	908972	07 September 1966	55	P	III	III	Brexel-Carboplatin	5.04	14.73	PR
82	RA	907560	31 Desember 1960	61	P	III	IV	Brexel-Carboplatin	1.02	8.05	CR
83	YR	915693	07 Januari 1998	23	L	III	III	Cisplatin-Paclitaxel	3.49	2.60	PR
84	SA	919595	07 Januari 1981	40	P	III	II	Cisplatin-Paclitaxel	4.82	19.00	CR
85	NA	829762	15 Januari 1984	37	L	III	III	Brexel-Carboplatin	3.35	12.50	CR

## Lampiran 2. Rekomendasi Persetujuan Etik



KEMENTERIAN PENDIDIKAN DAN KEBUDAYAAN  
UNIVERSITAS HASANUDDIN FAKULTAS KEDOKTERAN  
KOMITE ETIK PENELITIAN KESEHATAN  
RSPTN UNIVERSITAS HASANUDDIN  
RSUP Dr. WAHIDIN SUDIROHUSODO MAKASSAR  
Sekretariat : Lantai 2 Gedung Laboratorium Terpadu  
JL.PERINTIS KEMERDEKAAN KAMPUS TAMALANREA KM.10 MAKASSAR 90245.



Contact Person: dr. Agusalim Bukhari, MMed, PhD, SpGK. TELP. 081241850858, 0411 5780103, Fax : 0411-581431

### REKOMENDASI PERSETUJUAN ETIK

Nomor : 5/UN4.6.4.5.31/ PP36/ 2021

Tanggal: 5 Januari 2021

Dengan ini Menyatakan bahwa Protokol dan Dokumen yang Berhubungan Dengan Protokol berikut ini telah mendapatkan Persetujuan Etik :

No Protokol	UH20100576	No Sponsor	
Peneliti Utama	<b>dr. Rifa Septian</b>	Sponsor	
Judul Peneliti	Hubungan rasio neutrofil-limfosit (NLR) dan rasio limfosit-monosit (LMR) terhadap respon terapi pada pasien karsinoma nasofaring yang mendapatkan kemoterapi		
No Versi Protokol	1	Tanggal Versi	13 Oktober 2020
No Versi PSP		Tanggal Versi	
Tempat Penelitian	<b>RSUP Dr. Wahidin Sudirohusodo Makassar</b>		
Jenis Review	<input type="checkbox"/> Exempted <input checked="" type="checkbox"/> Expedited <input type="checkbox"/> Fullboard Tanggal	Masa Berlaku	Frekuensi review lanjutan
Ketua Komisi Etik Penelitian Kesehatan FKUH	Nama <b>Prof.Dr.dr. Suryani As'ad, M.Sc.,Sp.GK (K)</b>	5 Januari 2021 sampai 5 Januari 2022	
Sekretaris Komisi Etik Penelitian Kesehatan FKUH	Nama <b>dr. Agusalim Bukhari, M.Med.,Ph.D.,Sp.GK (K)</b>	Tanda tangan	

Kewajiban Peneliti Utama:

- Menyerahkan Amandemen Protokol untuk persetujuan sebelum di implementasikan
- Menyerahkan Laporan SAE ke Komisi Etik dalam 24 Jam dan dilengkapi dalam 7 hari dan Laporan SUSAR dalam 72 Jam setelah Peneliti Utama menerima laporan
- Menyerahkan Laporan Kemajuan (progress report) setiap 6 bulan untuk penelitian resiko tinggi dan setiap setahun untuk penelitian resiko rendah
- Menyerahkan laporan akhir setelah Penelitian berakhir
- Melaporkan penyimpangan dari prokol yang disetujui (protocol deviation / violation)
- Mematuhi semua peraturan yang ditentukan

### Lampiran 3. Dokumentasi Penelitian



Penelusuran data pasien



Bundel data pasien (berkas data KNF)

**HASIL PEMERIKSAAN LABORATORIUM KLINIK**

Nomor RM	: 922304	No. Registrasi	: 29210201981001103292403
Nama Pasien	: GEORGE DAUD CUSOY	Tgl. Registrasi	: 01-02-2021 05:27:21
Jns Kelamin/Tgl.Lahir	: Laki-laki 09-20-1981	Tgl. Hasil	: 01-02-2021 12:48:58
Nomor Lab	: RJG50	Unit Pengantar	: Poli-THT
Diagnosa		Dokter Pengujuk	: dr. Rafsanwaty Awhi, Sp.THT-KL(K)

PEMERIKSAAN	HASIL	NILAI RUJUKAN	SATUAN
<b>HEMATOLOGI</b>			
<b>Hematologi Rutin</b>			
WBC	5,0	4,00 - 10,0	10 <sup>3</sup> /μl
RBC	3,57	4,00 - 8,00	10 <sup>6</sup> /μl
HGB	11,3	12,0 - 16,0	g/dl
HCT	33	37,0 - 48,0	%
MCV	82	80,0 - 97,0	fL
MCH	32	28,5 - 33,5	pg
MCHC	35	31,5 - 35,0	g/dl
PLT	373	150 - 400	10 <sup>3</sup> /μl
RDW-SD		37,0 - 54,0	fL
RDW-CV	13,4	10,0 - 15,0	%
PDW	16,0	10,0 - 18,0	fL
MPV	7,0	8,50 - 11,0	fL
P-LCR		13,0 - 43,0	%
PCT	0,26	0,15 - 0,50	%
NEUT	39,3	50,0 - 70,0	%
LYMPH	49,4	20,0 - 40,0	%
MONO	7,3	2,00 - 8,00	10 <sup>3</sup> /μl
EO	9,5	1,00 - 3,00	10 <sup>3</sup> /μl
BAZO	0,5	0,00 - 0,10	10 <sup>3</sup> /μl
RET		0,00 - 0,10	10 <sup>3</sup> /μl
LED1		0,00 - 3,10	10 <sup>3</sup> /μl
LED Jam II		(L < 10, P < 20)	mm
Laju Endap Darah		< 10	mm
Koagulasi			
Waktu Bekuan	7,00	4 - 10	menit
Waktu pendarahan	4,00	1 - 7	menit
PT	10,4	10-14	detik
INR	1,00		
APTT	27,7	22,0 - 30,0	detik
<b>KIMIA DARAH</b>			
Glukosa			
GDS	98	140	mg/dl
Fungsi Ginjal serum			
Kreatinin	1,10	1,0 - 5,0	mg/dl
Fungsi Hati			
SGOT	19	< 38	U/L
SGPT	10	< 41	U/L
<b>(MUNOSEROLOGI)</b>			
Pananda Hepatitis			
Anti HCV (ICT)	Non Reactive	Non Reactive	

Halaman 1 / 2

Data hasil laboratorium

**RSUP. DR. WAHIDIN SUDIROHUSODO**  
**INSTALASI RADIOLOGI**  
JL. PERintis KEMERDEKAAN KM. 11 MAKASSAR  
TELP. (0411)584677, 583333 FAX. (0411)581666

Tanggal : 27-10-2020 10:37:40 Nomor RM : 922304  
 Nama : GEORGE DAUD CUSOY / Laki-laki  
 Tgl Lahir/ Kelamin : 20-04-1981 / Laki-laki  
 Alamat : DESA POLEGANYARA  
 Penyakit : Karsinoma nasofaring stadium III (T2N0M0)  
 Jenis Pemeriksaan : MSCT Sinus Paranasal (Tanpa Kontras)

Yth TS,

Teladi dilakukan pemeriksaan CT Scan sinus-paranasalis tanpa kontras irisan axial, reformasi coronal dan sagittal dengan hasil sebagai berikut:

- Tampak lesi heterogen (15-43 HU) batas tidak tegas, tepi irregular, berbatas tidak jelas, lesi pada sinus maxilaris kanan, ethmoidalis et sphenoidalis bilateral, frontalis kanan dan cavum nasi yang meluas ke choana, nasofaring sisi kanan, hingga ke intracranial serta mendestruksi dinding medial sinus maxilaris kanan, lamina papyracea kanan, os sphenoid kanan, dan dasar sella
- Tampak pereslabungan (21 HU) pada sinus maxilaris kiri
- Tampak deviasi septum nasi ke kiri
- Oropharynx yang teresak dalam batas normal
- Keduas bulbula oculi dan ruang retrobulbar yang teresak dalam batas normal
- Tulang-tulang lainnya yang teresak intact

kesimpulan : - Massa sinonasal yang meluas ke choana, nasofaring sisi dekstra hingga ke intracranial serta mendestruksi dinding medial sinus maxilaris dekstra, lamina papyracea dekstra, os sphenoid dekstra, dan dasar sella  
 - Sinusitis maxilaris sinistra  
 - Deviasi septum nasi ke sinistra

Usul : MRI brain dengan kontras

Konsulten  
BTX, SS

Prof. Dr. dr. Muhammad Ilyas, Sp.Rad(K) dr. Meinevie Susanna R.

p. kontrol 3 bulan

Data hasil rontgen pasien

## Lampiran 4. Uji Statistik menggunakan SPSS

### 1. Uji Normalitas Data (Kolmogorov-Smirnov)

**Case Processing Summary**

	Cases					
	Valid		Missing		Total	
	N	Percent	N	Percent	N	Percent
NLR Pre Kemoterapi	85	100.0%	0	0.0%	85	100.0%
LMR Pre Kemoterapi	85	100.0%	0	0.0%	85	100.0%
Respon Kemoterapi	85	100.0%	0	0.0%	85	100.0%

**Descriptives**

			Statistic	Std. Error
NLR Pre Kemoterapi	Mean		4.3948	.29246
	95% Confidence Interval for Mean	Lower Bound	3.8132	
		Upper Bound	4.9764	
	5% Trimmed Mean		4.0988	
	Median		4.0400	
	Variance		7.270	
	Std. Deviation		2.69631	
	Minimum		1.02	
	Maximum		13.62	
	Range		12.60	
	Interquartile Range		3.01	
	Skewness		1.688	.261
	Kurtosis		3.335	.517
	Mean		5.0219	.56049
LMR Pre Kemoterapi	95% Confidence Interval for Mean	Lower Bound	3.9073	
		Upper Bound	6.1365	
	5% Trimmed Mean		4.4572	
	Median		3.0800	
	Variance		26.703	
	Std. Deviation		5.16748	
	Minimum		.85	
	Maximum		21.56	
	Range		20.71	
	Interquartile Range		2.91	
	Skewness		1.848	.261
	Kurtosis		2.152	.517
	Mean		3.54	.064
	Respon Kemoterapi	95% Confidence Interval for Mean	Lower Bound	3.41
Upper Bound			3.67	

5% Trimmed Mean	3.60	
Median	4.00	
Variance	.346	
Std. Deviation	.589	
Minimum	2	
Maximum	4	
Range	2	
Interquartile Range	1	
Skewness	-.880	.261
Kurtosis	-.188	.517

**Tests of Normality**

	Kolmogorov-Smirnov <sup>a</sup>			Shapiro-Wilk		
	Statistic	df	Sig.	Statistic	df	Sig.
NLR Pre Kemoterapi	.116	85	.007	.844	85	.000
LMR Pre Kemoterapi	.286	85	.000	.679	85	.000
Respon Kemoterapi	.370	85	.000	.695	85	.000

a. Lilliefors Significance Correction



## 2. Uji Korelasi Spearman

### a. Korelasi NLR Pre Kemoterapi dan Respon Terapi

Correlations				
		NLR Pre Kemoterapi	Respon Kemoterapi	
Spearman's rho	NLR Pre Kemoterapi	Correlation Coefficient	1.000	
		Sig. (2-tailed)	.	
		N	85	
	Respon Kemoterapi	Correlation Coefficient	-.328**	1.000
		Sig. (2-tailed)	.002	.
		N	85	85

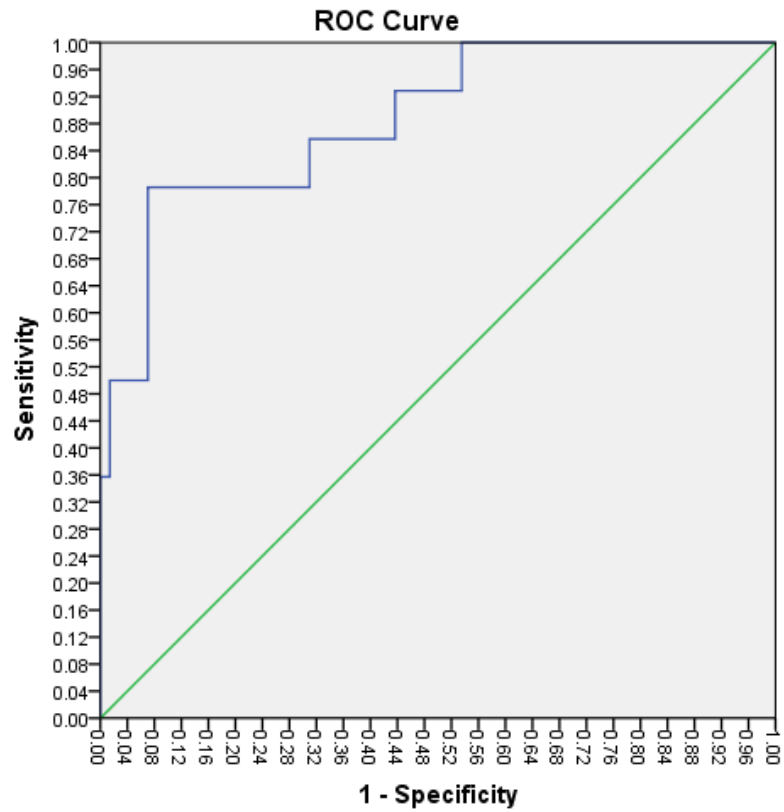
### b. Korelasi LMR Pre Kemoterapi dan Respon Terapi

Correlations				
		Respon Kemoterapi	LMR Pre Kemoterapi	
Spearman's rho	Respon Kemoterapi	Correlation Coefficient	1.000	
		Sig. (2-tailed)	.	
		N	85	
	LMR Pre Kemoterapi	Correlation Coefficient	.315**	1.000
		Sig. (2-tailed)	.003	.
		N	85	85

\*\* . Correlation is significant at the 0.01 level (2-tailed).

### 3. Kurva ROC

#### a. NLR Pre Kemoterapi dan Respon Terapi



#### Area Under the Curve

Test Result Variable(s): NLR Pre Kemoterapi

Area	Std. Error <sup>a</sup>	Asymptotic Sig. <sup>b</sup>	Asymptotic 95% Confidence Interval	
			Lower Bound	Upper Bound
.886	.050	.000	.789	.983

a. Under the nonparametric assumption

b. Null hypothesis: true area = 0.5

**Coordinates of the Curve**

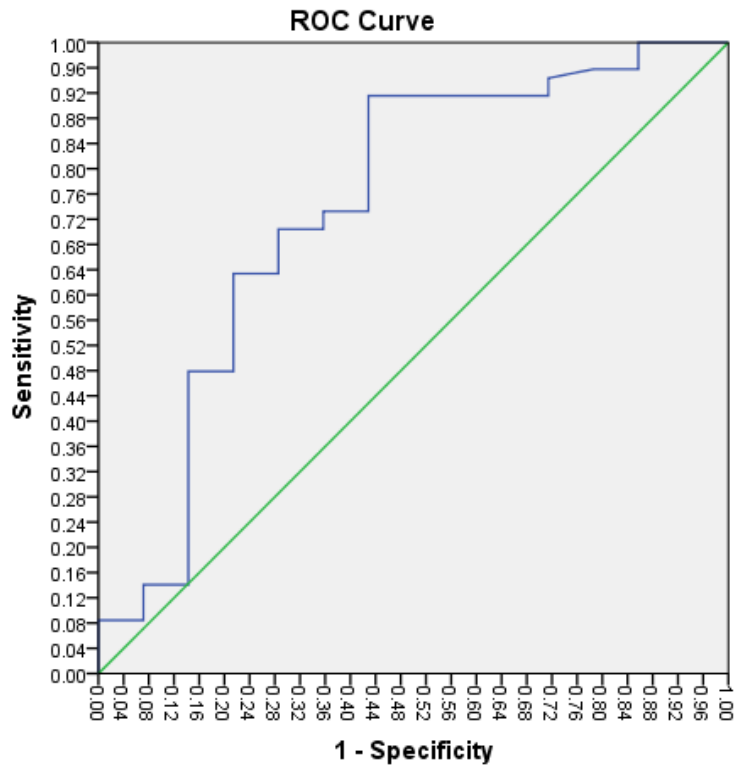
Test Result Variable(s): NLR Pre Kemoterapi

Positive if Greater Than or Equal To <sup>a</sup>	Sensitivity	1 - Specificity
.0200	1.000	1.000
1.1200	1.000	.986
1.2750	1.000	.972
1.3400	1.000	.958
1.3550	1.000	.944
1.3700	1.000	.930
1.4600	1.000	.915
1.5950	1.000	.901
1.6650	1.000	.887
1.7800	1.000	.873
1.8850	1.000	.859
1.8950	1.000	.845
2.0500	1.000	.831
2.2050	1.000	.817
2.2150	1.000	.789
2.2350	1.000	.775
2.2650	1.000	.761
2.2850	1.000	.746
2.3150	1.000	.732
2.4000	1.000	.718
2.5050	1.000	.704
2.5550	1.000	.690
2.5650	1.000	.676
2.6000	1.000	.662
2.6650	1.000	.648
2.7050	1.000	.634
2.7600	1.000	.620
2.8250	1.000	.606
2.9500	1.000	.592
3.0800	1.000	.577
3.1450	1.000	.563
3.2000	1.000	.549
3.2450	1.000	.535
3.3150	.929	.535
3.4200	.929	.507
3.5500	.929	.493
3.6150	.929	.479
3.6450	.929	.465
3.6800	.929	.451
3.7650	.929	.437
3.9400	.857	.437
4.0500	.857	.423
4.0900	.857	.408
4.1250	.857	.394
4.1450	.857	.380
4.2150	.857	.366
4.3500	.857	.338
4.4500	.857	.310
4.4900	.786	.310
4.5400	.786	.296
4.6150	.786	.282
4.7150	.786	.268
4.7950	.786	.254
4.8600	.786	.239
4.9650	.786	.225
5.0350	.786	.211

5.0650	.786	.197
5.1700	.786	.183
5.3250	.786	.169
5.4300	.786	.155
5.5150	.786	.141
5.7350	.786	.113
5.9050	.786	.099
5.9150	.786	.085
5.9700	.786	.070
6.0600	.714	.070
6.1300	.643	.070
6.1950	.571	.070
6.2500	.500	.070
6.4400	.500	.056
6.7300	.500	.042
6.8850	.500	.028
6.9500	.500	.014
7.3350	.429	.014
8.5250	.357	.014
10.2700	.357	.000
11.7150	.286	.000
12.4000	.214	.000
13.0400	.143	.000
13.5750	.071	.000
14.6200	.000	.000

a. The smallest cutoff value is the minimum observed test value minus 1, and the largest cutoff value is the maximum observed test value plus 1. All the other cutoff values are the averages of two consecutive ordered observed test values.

**b. LMR Pre Kemoterapi dan Respon Terapi**



Diagonal segments are produced by ties.

**Area Under the Curve**

Test Result Variable(s): LMR Pre Kemoterapi

Area	Std. Error <sup>a</sup>	Asymptotic Sig. <sup>b</sup>	Asymptotic 95% Confidence Interval	
			Lower Bound	Upper Bound
.739	.083	.005	.576	.902

The test result variable(s): LMR Pre Kemoterapi has at least one tie between the positive actual state group and the negative actual state group. Statistics may be biased.

a. Under the nonparametric assumption

b. Null hypothesis: true area = 0.5

**Coordinates of the Curve**

Test Result Variable(s): LMR Pre Kemoterapi

Positive if Greater Than or Equal To <sup>a</sup>	Sensitivity	1 - Specificity
-.1500	1.000	1.000
.9750	1.000	.929
1.1300	1.000	.857
1.2450	.986	.857
1.3900	.972	.857
1.4550	.958	.857
1.4650	.958	.786
1.4850	.944	.714
1.5100	.930	.714
1.5300	.915	.714
1.5550	.915	.643
1.5800	.915	.571
1.6150	.915	.500
1.6550	.915	.429
1.6950	.901	.429
1.7400	.887	.429
1.7650	.873	.429
1.7850	.859	.429
1.8050	.845	.429
1.8200	.817	.429
1.8350	.803	.429
1.8650	.789	.429
1.9950	.775	.429
2.1200	.761	.429
2.1600	.732	.429
2.2850	.732	.357
2.4200	.718	.357
2.4600	.704	.357
2.4850	.704	.286
2.5050	.690	.286
2.5150	.676	.286
2.5400	.662	.286
2.5800	.648	.286
2.6100	.634	.286
2.6250	.634	.214
2.6400	.620	.214
2.6950	.606	.214
2.7450	.592	.214
2.7650	.577	.214
2.9300	.563	.214
3.1000	.549	.214
3.1650	.535	.214
3.2400	.521	.214
3.2800	.507	.214
3.3300	.493	.214
3.3900	.479	.214
3.4450	.479	.143
3.5100	.465	.143
3.5750	.451	.143
3.6400	.437	.143
3.7250	.423	.143
3.8500	.408	.143
3.9300	.394	.143
3.9700	.380	.143
4.0200	.366	.143
4.0800	.352	.143

4.1350	.324	.143
4.2200	.310	.143
4.4800	.296	.143
4.6750	.282	.143
4.7300	.268	.143
4.8900	.254	.143
5.1000	.239	.143
5.2050	.225	.143
5.4050	.211	.143
5.6850	.197	.143
6.9100	.183	.143
8.4850	.169	.143
10.7100	.155	.143
12.5850	.141	.143
12.9350	.141	.071
13.8800	.127	.071
14.6450	.113	.071
15.7000	.099	.071
17.0000	.085	.071
17.3550	.085	.000
17.4700	.070	.000
17.6250	.056	.000
18.0650	.042	.000
18.7200	.028	.000
20.2800	.014	.000
22.5600	.000	.000

The test result variable(s): LMR Pre Kemoterapi has at least one tie between the positive actual state group and the negative actual state group.  
a. The smallest cutoff value is the minimum observed test value minus 1, and the largest cutoff value is the maximum observed test value plus 1. All the other cutoff values are the averages of two consecutive ordered observed test values.