

DAFTAR PUSTAKA

- Abrianto Akuan, 2009, "Tungku Peleburan Logam".
- Akhyar, H., Iswanto, P. T., dan Pambekti, A. (2018). *Pengaruh Variasi Suhu Tuang dengan Heat Treatment T4 terhadap Sifat Mekanis pada Aluminium Paduan 2024*, 1(July), 61–65
- Anne Zulfia.,Ratna Juwita.,Ari uliana., Nyomang jujur danjarot raharjo. (2010) *Proses Penuaan (Angin) Pada Paduan Aluminium AA 333 Hasil Proses Sand Casting*
- Beeresh Chatrad, Nithin Kammar, Prasanna P Kulkarni, Shrinivas Patil, A study on Minimization of Critical Defects in Casting Process Considering Various Parameters, International Journal of Innovative research in Science, Engineering and Technology,5(2016)8884-8902*
- Budiyono, A., dan Widayat, W. (2013). *Pemanfaatan Aluminium Skrap Sebagai Bahan Baku Industri Kecil Pengecoran Logam Non Ferro Melalui Perlakuan*
- B. Ravi, *Casting method optimization driven by simulation*, Indian Foundry Cong. 57 (2009) 70–74
- Campbell, J., "An Overview of the Effects of Bifilms on the Structure and Properties of Cast Alloys," *Metall. and Mater. Trans. B*, vol. 37, issue 6, pp.857-863 (2006).
- Chatrad, et.al, *Defects analysis and optimization of proses parameters using taguchi doe technique for san casting* (2016)
- Carlson, K. D., Ou, S., Hardin, R. A., dan Beckermann, C. (2002). Development of new feeding-distance rules using casting simulation: Part I. Methodology. *Metallurgical and Materials Transactions B: Process Metallurgy and Materials Processing Science*, 33(5), 731-740. <https://doi.org/10.1007/s11663-002-0027-0>

- Chelladurai, C., Mohan, N. S., Hariharashayee, D., Manikandan, S., dan Sivaperumal, P. (2020). Analyzing the casting defects in small scale casting industry. *Materials Today: Proceedings*, xxx. <https://doi.org/10.1016/j.matpr.2020.05.32>
- Choudhari C.M, Narkhede B.E, Mahajan S.K, *Casting design and Simulation of Cover plate Using Auto CAST-X Software for Defect Minimization with experimental Validation*, ELSEVIER, (2014)2211-8128
- Choudhari C.M, Narkhede B.E, Mahajan S.K, *Casting design and Simulation of Cover plate Using Auto CAST-X Software for Defect Minimization with experimental Validation*, ELSEVIER, 2211-8128 (2014).
- Djiwo, Soeparno dan Aladin Eko Purkuncoro. 2014. Analisis Kekerasan Al-Cu dengan Variasi Prosentasi Paduan Cu pada Proses Pengecoran dengan Penambahan Serbuk *Degasser*. Dalam Jurnal *Flywheel* 9 (1) : 38- 47.
- Febrian Hendra Kurniawan(2008)pengaruh penambahan 0.067.
- Fauzan., *Perencanaan fender dermaga (jetty) kapal dengan bobot 10000 DWT* 2018
- González, R., Colas, R., Velasco, A., & Valtierra, S. (2011). Characteristics of phenolic-urethane cold box sand cores for aluminum casting. *International Journal of Metalcasting*, 5(1), 41–48. <https://doi.org/10.1007/BF03355506>
- Hirigo, T. H., & Singh, B. Design and analysis of sand casting process of mill roller. *International Journal of Advanced Manufacturing Technology*, 105(5–6), 2183–2214. <https://doi.org/10.1007/s00170-019-04270-4> (2019).
- Hajela P, Lee E. *Optimalisasi topologi struktur bawah lantai helikopter untuk pertimbangan kelayakan tabrakan. Struktur Komputasi 1997;64(1-4):65–76.*
- H. Demir, S. Gunduz, The effects of aging on machinability of 6061 aluminium alloy, *Materials & Design*.30.5 (2009)1480-1483.
- J. Jezierski, R. Dojka, K. Janerka, Optimizing the *gating system* for steel castings, *Metals* 8 (66) (2018) 1–13

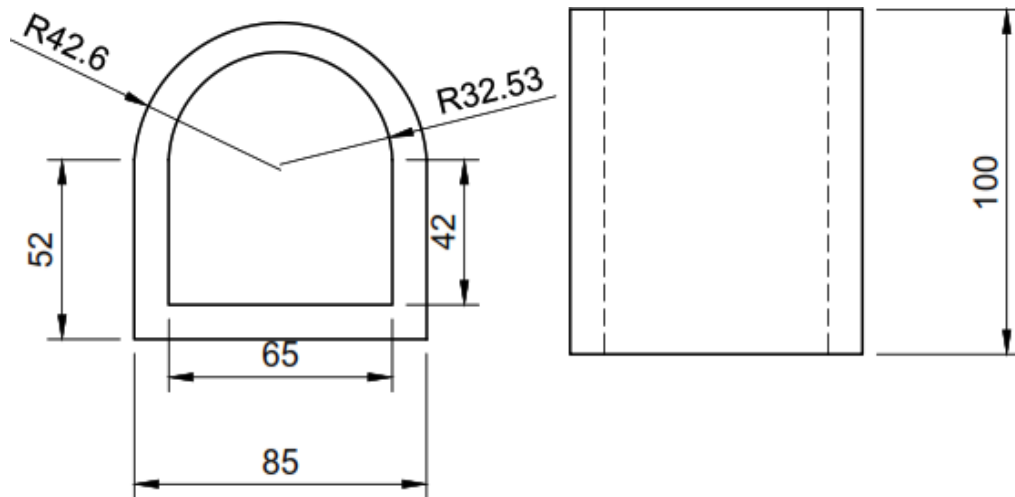
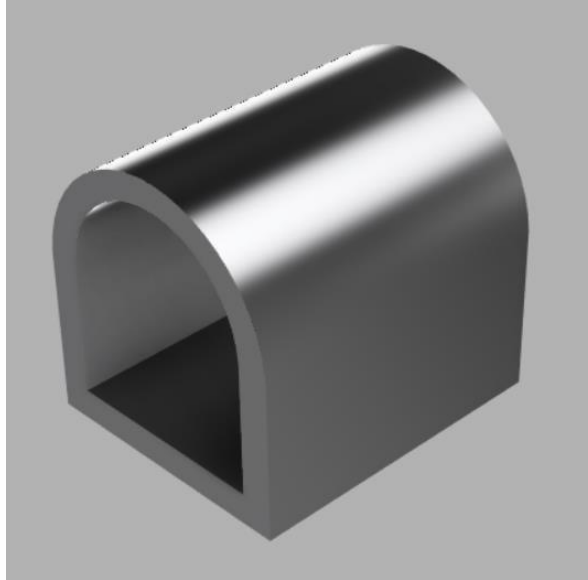
- Kalpakjian, S., *Manufacturing Engineering and Technology*, 7th Pearson Prentice Hall, 2006
- Kimiartha, I Made Pasek. 2015. Pengaruh Penambahan Tembaga (Cu) terhadap Sifat Mekanik dan Struktur Mikro pada Paduan Aluminium-Silikon (Al-Si) melalui Proses Pengecoran. Surabaya. Institut Teknologi Sepuluh Nopember.
- Kurniawan, D. Y., Sumarji, dan Kristianta, F. (2014). Simulasi Perancangan Saluran Tuang Pada Pembuatan Pipe Reducer Ø 12'' Ke Ø 10'' FC25 Dengan Perangkat Lunak Solidcast. *Unej Jurnal*, II(2), 1–5
- Kotschi R.M., *Metals Handbook: Casting Design*, 9th edition, ASM, 1988
- Lanzi L, Bisagni C, Ricci S. *Sistem jaringan saraf untuk mereproduksi perilaku crash komponen struktural. Struktur Kompos 2004;82(1):93–108.*
- Michael Evans, David Moore, George McCabe (2017) Minitab manual for introduction to the practice of statistics, 5th edn. Minitab Inc., University of Toronto, USA, p 27
- Narayanswamy.C, Natrajan.K, Review Analysis of *Casting Defect with Respect to Indian Standards in Cast Iron foundry*, Journal of Chemical and pharmaceutical Science,2(2016)63-68,ISSN:0974-2115
- Nimbulkar, S. L., dan Dalu, R. S. (2016). Design optimization of gating and feeding system through simulation technique for sand casting of wear plate. *Perspectives in Science*, 8, 39–42.
<https://doi.org/10.1016/j.pisc.2016.03.001>
- Nur Imam Subagio, I., Zulhanif, H., & Harnowo Supriadi, N. (2018). Analisis Pengaruh Artificial Aging Terhadap Sifat Mekanis Pada Aluminium Seri 6061.
- Parisher, R. A., dan Rhea, R. A. (2012). Flange Basics. *Pipe Drafting and Design*, 56–78. <https://doi.org/10.1016/b978-0-12-384700-3.00004-9>
- Prof B.R. Jadhav, S.J. Jadhav, Investigation And Analysis Of Cold Shut Casting Defect And Defect Reduction By Using 7 Quality Control Tools, *International Journal of Advanced Engineering Research and Studies*. (2013)28-30

- Rao, D. H., Rao, G. K. M., & Vundavilli, P. R. (2014). Design and Development of Knowledge Base Scheme for Chromite-based Resin Bonded Sand Core System. *Procedia Materials Science*, 6(Icmpc), 919– 925. <https://doi.org/10.1016/j.mspro.2014.07.161>
- Suardia, T., and Saito, S. (1985a). Ilmu Pengetahuan Bahan Teknik. Pradnya Paramita Jakarta.
- Suardia, T., and Saito, S. (1985b). Ilmu Pengetahuan Bahan Teknik. Pradnya Paramita Jakarta.
- Surdia, T., Teknik Pengecoran Logam, PT. Pradnya Paramita, Jakarta, 1976 Surekha, B.,
- Surdia, T., Chijiwa, K., 2000, Teknik Pengecoran Logam, Cetakan Ke-8, PT.Pradnya Paramita, Jakarta
- Soejono Tjitro., Analisis Jenis-Jenis Teknik Pengecoran Logam Berdasarkan Jenis Cetakannya 2020
- Subiyanto ,Subowo, Pembuatan dan karakteritis keramik magnesium alumnia Surekha, B., Rao, D. H., Rao, G. K. M., & Vundavilli, P. R.. Design and Development of Knowledge Base Scheme for Chromite-based Resin Bonded Sand Core System. *Procedia Materials Science*, 6(Icmpc), 2018
- Sutanti,. Dody Prayitno., dan Joko Riyono. 2017. Pengaruh Penambahan Tembaga (Cu) terhadap Kekerasasn Logam Paduan Aluminium-Timah Putih (Al-Sn). Dalam Jurnal Seminar Nasional Cendikiawan Ke-3 : 231-237.
- Syafikril, K., Karmiadji, D. W., & Rahmalina, D. Desain *Gating System* dan Parameter Proses Pengecoran untuk Mengatasi Cacat Rongga Poros Engkol. *Jurnal Teknologi Rekayasa*, 2(1), 55. <https://doi.org/10.31544/jtera.v2.i1.2017.55-6> (2017).
925. <https://doi.org/10.1016/j.mspro.2014.07.161> (2014).silica dari abu vulkanik gunung sinabung 2008
- Tjitro, S. (2001). Pengaruh bentuk riser terhadap cacat penyusutan produk cor aluminium cetakan pasir. *Jurnal Teknik Mesin*, 3(2), 41-46.

- Wankhede, D. M., Narkhede, B. E., Mahajan, S. K., & Choudhari, C. M. (2018). Influence of pouring temperature and external chills on mechanical properties of aluminum silicon alloy castings. *Materials Today: Proceedings*, 5(9), 17627-17635.
- Wessel, J.K. (2004). *Handbook of Advanced Materials*, Wiley-Interscience, USA
- Wang, Q.G., Apelian, D., Lados, D.A., “Fatigue Behaviour of A356-T6 Aluminum Cast Alloys. Part I. Effect of *Casting* Defects,” *J. Light Met.*, vol. 1, issue 1, pp. 73-84 (2001).
- Wahyu Purwo Raharjo., Pengaruh Perlakuan Panas Terhadap Struktur Mikro Dan Kekerasan Coran Paduan Al-Mg-Si-Cu 2008
- Yokesh Kumar J, Balakrishnan M , Gowtham Kumar S, Ramesh D (2016) Review on design and optimization of *gating* and *risering system* for sand *casting* process. *International Journal for Science and Advance Research in Technology*. 2(10):95–101
- Yayi Febdia Pradani, Mochamad Sulaiman, Saiful Hardiyanto., Analisis tingkat kekerasan aluminium 6061 berdasarkan variasi media pending pada proses pack carburizing 2020
- Z. Jiang, M. Gu / *Materials and Design* 31 (2010)
- Zuhaimi, Z., & Husaini, H. (2006). Perilaku Retak Aluminium Paduan A6061-T6 pada Pembebanan Mixed Mode. *Jurnal Teknik Mesin*, 8(1), pp-26.

LAMPIRAN

Lampiran 1 Gambar Desain *Fender*



Lampiran 2 Foto Kegiatan

Proses pembuatan cetakan pasir



Cetakan kayu yang akan di masukan ke dalam plat besi sebagai pola.



Cetakan kayu yang di masukan dalam plat dan di selimuti dengan pasir.



Proses pembakaran pada cetakan pasir



Hasil cetakan setelah di bakar



Proses pembakaran inti cor



Hasil dari cetakan pasir dan Inti cor setelah di buka



Proses penimbangan Al6061



Tembaga (Cu)



Proses peleburan Al6061+Cu



Proses pencampuran Al6061+Cu



Hasil pengecoran Fender

Proses pengujian



Benda uji yang telah di potong



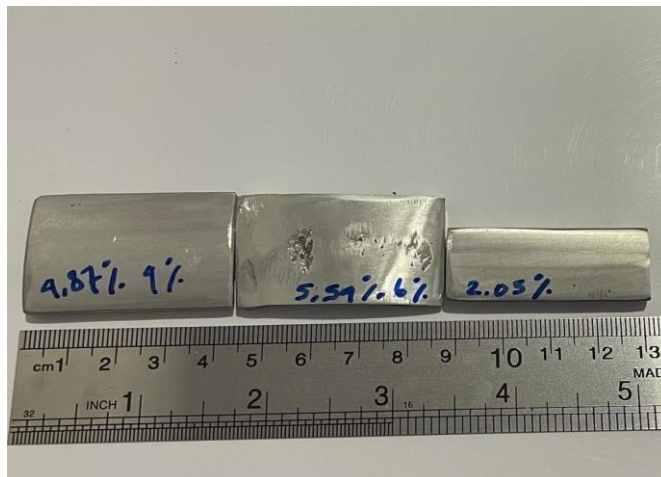
Proses perendaman sampel benda uji Fender



Pengujian Mikrostruktur



Pengujian kekerasan



Sempel pengujian komposisi

ELEMENT	% ↑	+/-	LIMIT
Al	94.57	0.371	94.50 - 96.00
Cu	2.05	0.018	3.90 - 4.60
Si	1.98	0.060	
Mg	0.68	0.192	
Fe	0.56	0.016	0.00 - 0.15
Cr	0.09	0.012	0.00 - 0.10
Zn	0.04	0.002	0.00 - 0.25
Ni	0.03	0.003	0.00 - 0.10

Alloy_LE_F 10s. 4:18pm

DITA

AA-2014

POSSIBLE MATCH (3/3)

ELEMENT	% ↑	+/-	LIMIT
Al	89.64	0.405	90.00 - 96.00
Cu	5.45	0.032	3.90 - 5.00
Si	4.04	0.091	0.50 - 1.20
Fe	0.66	0.018	0.00 - 0.70
Cr	0.12	0.014	0.00 - 0.10
Zn	0.05	0.003	0.00 - 0.25
S	0.05	0.008	
Y	0.00	0.000	

DITA

AA-2011

GOOD MATCH (1/3)

ELEMENT	% ↑	+/-	LIMIT
Al	91.06	0.392	91.00 - 95.00
Cu	4.87	0.028	5.00 - 6.00
Si	2.25	0.064	
Mg	1.24	0.218	
Fe	0.44	0.014	0.00 - 0.70
Cr	0.07	0.011	
Zn	0.05	0.002	0.00 - 0.30
Ni	0.02	0.003	0.00 - 1.00

Alloy_LE_F 10s. 4:14pm

DITA

AA-2095

GOOD MATCH (3/3)

ELEMENT	% ↑	+/-	LIMIT
Al	94.57	0.371	94.50 - 96.00
Cu	2.05	0.018	3.90 - 4.60
Si	1.98	0.060	
Mg	0.68	0.192	
Fe	0.56	0.016	0.00 - 0.15
Cr	0.09	0.012	0.00 - 0.10
Zn	0.04	0.002	0.00 - 0.25
Ni	0.03	0.003	0.00 - 0.10

Pengujian komposisi.