

## DAFTAR PUSTAKA

- ASTM C33, 1978. STANDARD SPESIFICATION FOR CONCRETE AGGREGATES, American Society for Testing and Materials, Philadelphia, Pa.
- Badan Standar Nasional. 2000. SNI 03-2834-2000. Tata Cara Pencampuran Beton Normal. Jakarta: Dewan Standarisasi Nasional
- Badan Standar Nasional. 2002. SNI 03-2847-2002. Tata Cara Perhitungan Struktur Beton Untuk Bangunan Gedung. Jakarta: Badan Standarisasi Nasional
- Badan Standar Nasional. 2004. SNI 03-0129-2004. Semen Portland Putih. Jakarta: Badan Standarisasi Nasional
- Badan Standar Nasional. 2004. SNI 03-0302-2004. Semen Portland Pozolan. Jakarta: Badan Standarisasi Nasional
- Badan Standar Nasional. 2004. SNI 15-2049-2004. Semen Portland. Jakarta: Dewan Standarisasi Nasional.
- Badan Standar Nasional. 2004. SNI 03-3500-2004. Semen Portland Campur. Jakarta: Badan Standarisasi Nasional
- Badan Standar Nasional. 2004. SNI 03-3758-2004. Semen Masonry. Jakarta: Badan Standarisasi Nasional
- Badan Standar Nasional. 2004. SNI 03-7064-2004. Semen Portland Komposit. Jakarta: Badan Standarisasi Nasional
- Badan Standar Nasional. 2011. SNI 1974:2011. Cara Uji Kuat Tekan Beton Dengan Benda Uji Silinder. Jakarta: Badan Standarisasi Nasional
- Badan Standar Nasional. 2011. SNI 4431:2011. Cara Uji Kuat Lentur Beton Normal Dengan Dua Titik Pembebanan. Jakarta: Badan Standarisasi Nasional

- Badan Standar Nasional. 2012. SNI 7656:2012. Tata Cara Pemilihan Campuran Untuk Beton Normal, Beton Berat dan Beton Massa. Jakarta: Badan Standarisasi Nasional
- Badan Standar Nasional. 2013. SNI 2847:2013. Persyaratan Beton Struktural Untuk Bangunan Gedung. Jakarta: Badan Standarisasi Nasional
- Badan Standar Nasional. 2014. SNI 2491:2014. “Metode Uji Kekuatan Tarik Belah Specimen Beton Silinder. Jakarta: Badan Standarisasi Nasional
- Badan Standar Nasional. 2015. SNI 2049:2015. Semen Portland. Jakarta: Badan Standarisasi Nasional
- Badan Standar Nasional. 2019. SNI 2847:2019. Persyaratan Beton Struktural Untuk Bangunan Gedung. Jakarta: Badan Standarisasi Nasional
- Belen Gonzalez-Fonteboa, Fernando Martinez-Abella, Javier Eiras-Lopez, Sindy Seara-Paz. 2010. “Effect of recycled coarse aggregate on damage of recycled concrete”, *Materials and Structures*
- Danying Gao, Feihu Wang. 2021. “Effects of recycled fine aggregate and steel fiber on compressive and splitting tensile properties of concrete”, *Journal of Building Engineering*
- Departemen Permukiman Dan Prasarana Wilayah. 2003. Perencanaan Perkerasan Jalan Beton Semen. Pd. T-14-2003. Departemen Permukiman dan Prasarana Wilayah. Jakarta
- Edward G. Nawy, P. E. 1998. “Beton Bertulang Suatu Pendekatan Dasar. PT. Refika Aditama. Bandung
- Hamed Dabiri, Mahdi Kioumarsi, Ali Kheyroddin, Amirreza Kandiri, Farid Sartipi. 2022. “Compressive strength of concrete with recycled aggregate: a machine learning-based evaluation”, *Cleaner Materials*

- H. Fang, J.D. Smith, K.D. Peaslee. 1998. "Study of Spent Refractory Waste Recycling From Metal Manufactures in Missouri", Resources, Conservation and Recycling
- Mahdi Nematzadeh, Javad Dashti, Behnoud Ganjavi. 2018. "Optimizing compressive behaviour of concrete containing fine recycled refractory brick aggregate together with calcium aluminate cement and polyvinyl alcohol fibers exposed to acidic environment", Construction and Building Materials
- Mohd. Ahmed, Javed Mallick, Mohd. Abul Hasan. 2014. "A Study of Factors Affecting the Flexural Tensile Strength of Concrete", Journal of King Saud University-Engineering Sciences
- Saifullah Omary, Elhem Ghorbel, George Wardeh. 2016. "Relationships between recycled concrete aggregates characteristics and recycled aggregates concretes properties", Construction and Building Material

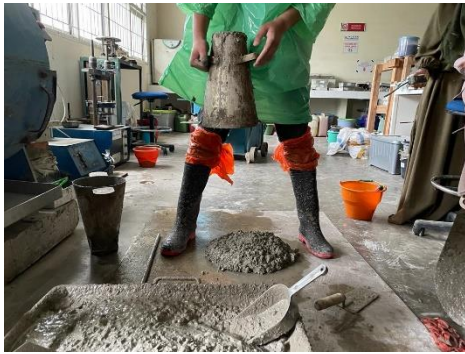
### Lampiran 1 Proses Penyiapan Material



### Lampiran 2 Proses Pembuatan Benda Uji



### Lampiran 3 Proses Pengujian Nilai Slump



## Lampiran 4 Pengujian Benda Uji

