

DAFTAR PUSTAKA

- Aba, P.E., Asuzu, I.U. 2018. Mechanisms of actions of some bioactive anti-diabetic principles from phytochemicals of medicinal plants: A review. *Indian Journal of Natural Products and Resources* Vol. 9 (2) : 85-96.
- Adewole,S.O.,Martins, E.A. 2006. Full Length Research Article: Morphological Changes and Hypoglycemic Effects of *Annona Muricata* Linn. (Annonaceae) Leaf Aqueous Extract on Pancreatic B-Cells of Streptozotocin-Treated Diabetic Rats. *African Journal of Biomedical Research*, Vol. 9 :173 – 187.
- Altemimi, A., et al. 2017. Review Phytochemicals: Extraction, Isolation, and Identification of Bioactive Compounds from Plant Extracts. *Journal Plants*. Vol.6 (42) : 1 - 23.
- American Diabetes Association. 2014. *Diagnosis and Classification of Diabetes Mellitus*. Volume 37, Supplement 1.
- Agu KC., Okolie, PN. 2017. Proximate composition, phytochemical analysis, and in vitro antioxidant potentials of extracts of *Annona muricata* (Soursop). *Food Sci Nutr*. Vol. 5 :1029-1036.
- Aziz, A. R., dkk. 2013. Efektifitas Air Rebusan Daun Sirsak (*Annona muricata*) Terhadap Kadar Gula Darah Pada Penderita Diabetes Melitus Tipe 2. Program Studi Ilmu Keperawatan, Universitas Riau.

- Ayepola, OR, et al. 2014. Oxidative Stress and Diabetic Complications: The Role of Antioxidant Vitamins and Flavonoid. Intech Open. Vol.2 : 25-58
- Brahmachari, G. 2011. Bio-flavonoids with promising anti- diabetic potentials: A critical survey. Opportunity, Challenge and Scope of Natural Products in Medicinal Chemistry. Vol. 37 : 187-212
- Badan POM RI. 2015. Antidiabetik Oral; Biguanida. Pusat Informasi Obat Nasional.
- Bhardwaj, R. et al. 2019. Bioactive Compounds of Annona. In: Bioactive Compounds in Underutilized Fruits and Nuts. Switzerland: Springer. P: 1-19
- Campos, Carlos. 2012. Chronic Hyperglycemia and Glucose Toxicity: Pathology and Clinical Sequele, Post Graduate Medicine, Vol.124 (6): 1-8
- Chen, J. et al. 2014. Natural Flavonoids as Potential Herbal Medication for the Treatment of Diabetes Mellitus and Its Complications. NPC. Vol.10 (1): 187-200
- Damara, A., Sukohar, A. 2018. Efektivitas Infusa Daun Kersen sebagai Antidiabetik. J Agromedicine, Vol.5 (1) : 534-539
- Decroli, E. 2019. Diabetes Mellitus Tipe 2. Pusat Penerbitan Bagian Ilmu Penyakit Dalam Fakultas Kedokteran Universitas Andalas Padang. Hal: 1-43

- Departemen Kesehatan RI. 2008. Pedoman Pengendalian Diabetes Mellitus dan Penyakit Metabolik. Jakarta
- Diani, A.,dkk. 2010. Tata laksana metformin DM tipe 2 pada anak. Sari Pediatri, Vol. 11 (6) : 395-400
- Dinas Kesehatan Provinsi Sulawesi Selatan. 2015. Profil Kesehatan Provinsi Sulawesi Selatan Tahun 2014. Makassar
- Engwa, G.A. 2018. Free Radicals and the Role of Plant Phytochemicals as Antioxidants Against Oxidative Stress-Related Diseases. Vol.4 : 49-65
- Emilda. 2018. Efek Senyawa Bioaktif Kayu Manis *Cinnamon humanii* Terhadap Diabetes Mellitus. Jurnal Fitofarmaka Indonesia. Vol.5 (1): 246-252
- Fibriana, R. 2011. Diabetes Mellitus Dan Terapi Insulin. Vol.1 (2) : 3-4
- Florez, J.C. 2017. Pharmacogenetics in type 2 diabetes. Diabetologia. Vol.60: 800-807
- Goud, B.J, et al. 2015. Review article: Streptozotocin-A Diabetogenic Agent in Animal Models. Human. Vol. 3 (1): 253-269
- Gyesi,JN.,et al. 2019. Research Article: Chemical Composition, Total Phenolic Content, and Antioxidant Activities of the Essential Oils of the Leaves and Fruit Pulp of *Annona muricata* L. (Soursop) from Ghana. Biochemistry Research International. Vol 9 : 1-9

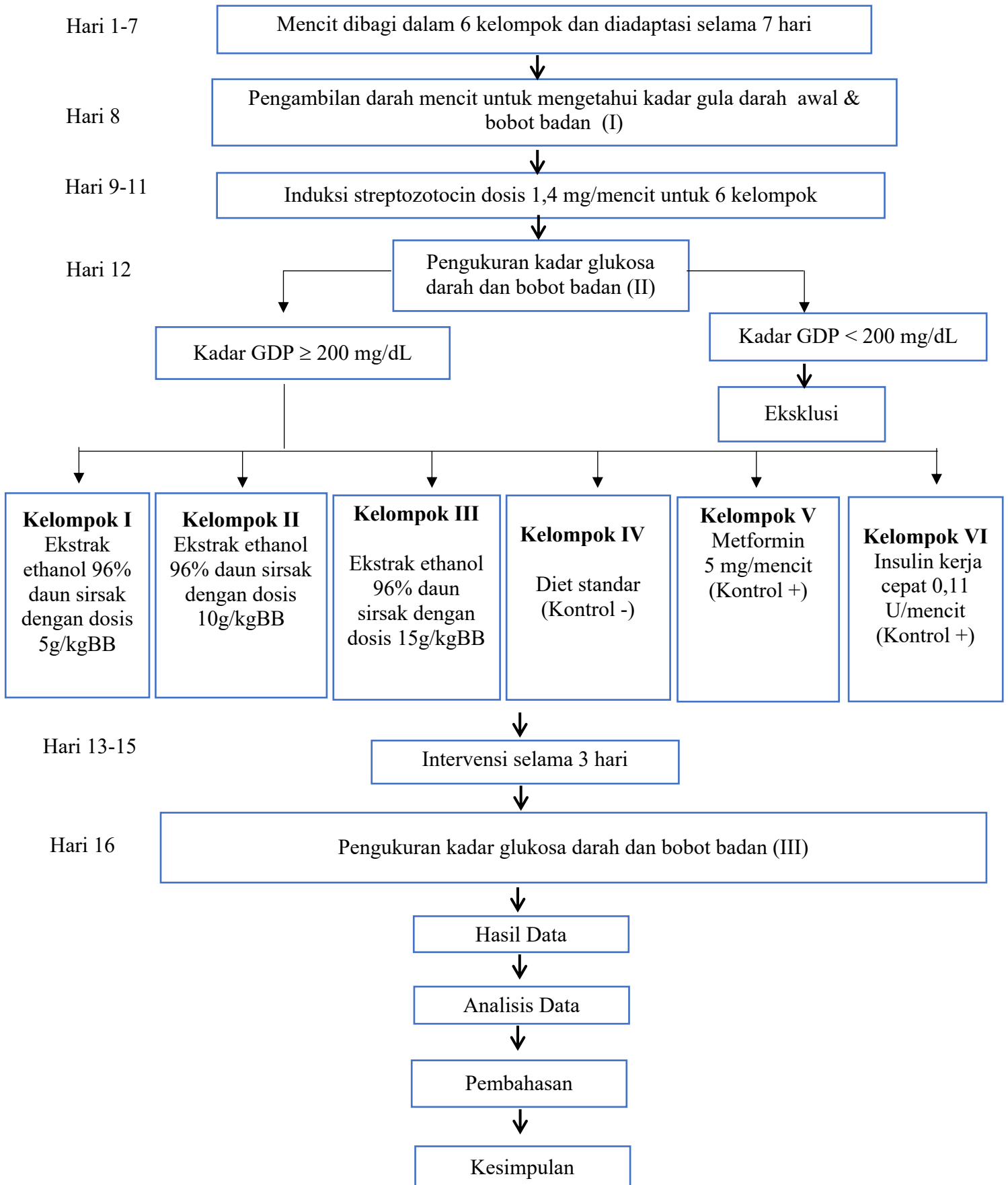
- Gumelar, B., dkk. 2017. Potensi Ekstrak Etanol Daun Sirsak (*Annona muricata*) sebagai Agen Terapi Hiperglikemia pada Mencit yang Diinduksi Aloksan. Bandung Meeting on Global Medicine & Health. Vol.1(1) : 55-59
- Hasmila, I., et al. 2019. Phytochemical analysis and antioxidant activity of soursop leaf extract (*Annona muricata* Linn.) Journal of Physics. Vol. (13): 1-6
- Jaya,J.H., Basori, A., Sudarno. 2012. Blood Glucose Reduction in Mice (*Mus musculus*) Resulting From The Administration of Pare (*Momordica charantia*) Fruit Flesh Juice. Folia Medica Indonesiana. Vol. 48 (2) : 43-49.
- Kementerian Kesehatan RI. 2014. Infodatin Pusat Data dan Informasi Jakarta Selatan
- Kurniasih, N. 2015. Potensi Daun Sirsak (*Annona muricata* Linn), Daun Binahong (*Anredera cordifolia*), dan Daun Benalu Mangga (*Dendrophthoe pentandra*) Sebagai Antioksidan Pencegah Kanker. Vol. 9 (1) : 162-182
- Kumari, M., Jain S. 2012. Tannins: An Antinutrient with Positive Effect to Manage Diabetes. Research Journal of Recent Sciences. Vol. 1(12) : 70-73
- Lenzen, S. 2008. Review :The mechanisms of alloxan- and streptozotocin-induced diabetes. Diabetologia. Vol 51 : 216-226

- Minamii, T., Nogami, M., Ogawa, W. 2018. Mechanisms of metformin action: In and out of the gut. *J Diabetes Investig* Vol.9 (4): 701-703
- Ndraha, S. 2014. Diabetes Melitus Tipe 2 dan Tatalaksana Terkini. *Medicinus*. Vol. 27 (2): 9-17
- Novrial,D. 2007. Kerusakan Sel β Pankreas Akibat Induksi Streptozotocin: Tinjauan Patologi Eksperimental. *Mandala of Health*. Vol 3 : 46-51.
- Panche, A.N., Diwan, A.D., Chandra, S.R. 2016. Flavonoids: an overview. Review Article. *Journal of Nutritional Science*. Vol. 5 (47): 1-15.
- Pandey, A., Tripathi, S. 2014. Concept of Standardization, Extraction and Pre Phytochemical Screening Strategies For Herbal Drug. *Journal of Pharmacognosy and Phytochemistry*. Vol 2 (5) : 115-119
- Pratama, A. 2014. Uji Aktivitas Antidiabetes Ekstrak Etanol Daun Sirsak (*Annona muricata L.*) pada Mencit Diabetes yang diinduksi Aloksan. Fakultas Farmasi, Universitas Jember
- Salempa, P. 2016. Uji Bioaktivitas Senyawa Metabolit Sekunder Ekstrak Kloroform Kulit Batang Sirsak (*Annona muricata Linn*). *Jurnal Bionature*. Vol. 17 (1) : 37-40.
- Sani, U.M. 2015. Phytochemical screening and antidiabetic effect of extracts of the seeds of *Citrullus lanatus* in alloxan-induced

- diabetic albino mice. Journal of Applied Pharmaceutical Science Vol. 5 (3) : 51-54.
- Safithri, F. 2017. Potensi Biji Jintan Hitam (*Nigella sativa*) dalam Regenerasi Pankreas Secara Endogen pada Diabetes Mellitus Tipe-2. UMM. Vol.13 (2): 76-87.
- Silva, G., et al. 2017. Extraction methods, qualitative and quantitative techniques for screening of phytochemicals from plants. American Journal of Essential Oils and Natural Products.Vol.5 (2) : 29-32.
- Singh, A., et al. 2016. Role of Medicinal Plants for Health Perspective: Special Reference to Antioxidant Potential. Journal of Chemical Biology & Therapeutic. Vol.1 (2) : 1-5.
- Soelistijo, S.A. 2015. Konsensus Pengelolaan dan Pencegahan Diabetes Melitus Tipe 2 Di Indonesia. PB PERKENI. Hal: 1-36.
- Sovia et al. 2014. Hypoglycemic and Hypolipidemic Effects of *Annona muricata* L. Leaf Ethanol Extract. Int J Pharm Pharm Sci. Vol. 9 (3) : 170-174
- Sumantri, I., dkk. 2014. Ekstraksi Daun Sirsak (*Annona muricata* L) Menggunakan Pelarut Etanol. Momentum. Vol. 10 (1) : 34-37.
- Sun, C.,et al. 2016. Original Article: Effect of fasting time on measuring mouse blood glucose level. Int J Clin Exp Med.Vol. 9 (2) : 4186-4189.

- Szkudelski, T. 2001. Minireview :The Mechanism of Alloxan and Streptozotocin Action in B Cells of the Rat Pancreas. Vol. 50 : 536-546.
- Ta'adi, et al. 2019. Effectiveness of Soursop Leaf Extracts on Decreasing Blood Sugar for Type-2 Diabetes Mellitus Patients. Indian Journal of Public Health Research & Development. Vol.10 (9) : 1317-1321
- Vinayagam, R., Xu, B. 2015. Antidiabetic Properties of Dietary Flavonoids: a cellular mechanism review. Nutrition & Metabolism. Vol. 12 (60): 1-20.
- Wahyuni, dkk. 2016. Efek Antihiperlikemik Ekstrak Etanol Daun Sirsak (*Annona muricata* Linn.) dan Ekstrak Etanol Buah Belimbing Wuluh (*Averrhoa bilimbi* Linn.) serta Kombinasinya pada Mencit Jantan. *Pharmauho*. Vol.1 (1) : 16-19.
- Wahab, A., et al. 2018. Exploring the Leaves of *Annona muricata* L. as a Source of Potential Anti-inflammatory and Anticancer Agents. *Frontiers in Pharmacology* Vol. 9 (661) : 1-20.
- WHO. 2006. Definition and Diagnosis of Diabetes Mellitus and Intermediate Hyperglycemia. Switzerland
- Yusuf, M.I, dkk. 2018. Antioxidant and Antidiabetic Potential of Galing Stem Extract (*Cayratia trifolia* Domin). *Pharmacogn J*. Vol.10 (4) : 686-689.

Lampiran 1. Skema Kerja



Lampiran 2. Perhitungan Dosis

1. Dosis Streptozotocin

- STZ memiliki dosis 40 mg/kgBB pada tikus
- Untuk tikus 200 g = $200 \text{ g}/1000 \text{ g} \times 40 \text{ mg} = 8 \text{ mg}$
- Faktor konversi dari tikus 200 g ke mencit 20 g = 0,14
- Pada mencit 20 g = $8 \times 0,14 = 1,12 \text{ mg/ mencit}$
- Rata-rata BB mencit = 25 g
- Dosis streptozotocin untuk mencit 25 g = $(25 \text{ g}/ 20 \text{ g}) \times 1,12 \text{ mg} =$
1,4 mg
- Total kebutuhan = $1,4 \text{ mg} \times 24 \text{ ekor} \times 3 \text{ hari} = 100,8 \text{ mg}$
- Dosis pengenceran = $100,8 \text{ mg} + 10 \text{ ml aquadest} = \pm 10 \text{ ml}$ lalu dibagi
72 dosis = **0,14 ml (intra peritoneal)**

2. Dosis Ekstrak Daun Sirsak

- Berat mencit rata-rata 25 g
- $25 \text{ g} = 0,025 \text{ kg}$
- Dosis 1 = $5 \text{ g/kg BB} = 0,025 \text{ kg} \times 5 \text{ g/kg BB} =$ **0,125 g (per oral)**
- Dosis 2 = $10 \text{ g/kg BB} = 0,025 \text{ kg} \times 10 \text{ g/kg BB} =$ **0,250 g (per oral)**
- Dosis 3 = $15 \text{ g/kg BB} = 0,025 \text{ kg} \times 15 \text{ g/kg BB} =$ **0,375 g (per oral)**
- Total Kebutuhan =
 $0,125 \text{ g} \times 4 \text{ ekor} \times 3 \text{ hari} = 1,5 \text{ g}$
 $0,250 \text{ g} \times 4 \text{ ekor} \times 3 \text{ hari} = 3 \text{ g}$
 $0,375 \text{ g} \times 4 \text{ ekor} \times 3 \text{ hari} = 4,5 \text{ g}$

9 gram

Cara kerja yaitu 100 gram daun sirsak ditimbang setelah dihaluskan dan diencerkan dengan 1 liter ethanol 96%, lalu diolah menggunakan rotarory evaporator dan dipanaskan dengan waterbath hingga diperoleh ekstrak kental = $\pm 20 \text{ gram}$

3. Dosis Metformin

- Dosis metformin untuk manusia = 1500 mg/ hari
- Konversi dari manusia 70 kg ke mencit 20 g = 0,0026
- Untuk mencit 20 g = $1500 \text{ mg} \times 0,0026 = 3,9 \text{ mg}$
- Rata-rata BB mencit = 25 g
- Dosis metformin untuk mencit 25 g = $(25 \text{ g}/20 \text{ g}) \times 3,9 \text{ mg} = 4,875 \text{ mg}$
= **5 mg**
- Total kebutuhan = $5 \text{ mg} \times 4 \text{ ekor} \times 3 \text{ hari} = 60 \text{ mg}$

- Cara kerja = $\frac{\text{Kadar diinginkan}}{\text{Kadar sediaan}} \times \text{Berat sediaan} = \frac{60 \text{ mg}}{500 \text{ mg}} \times 600 \text{ mg}$
= 72 mg
- Dosis pengenceran = 72 mg + 10 ml aquadest = ± 10 ml lalu dibagi 12 dosis = **0,8 ml (per oral)**

4. Dosis Insulin kerja cepat

- Dosis insulin untuk manusia = 0,5 U/kgBB
- Rata-rata berat manusia = 70 kg, Kebutuhan insulin = 0,5 U x 70 kg = 35 U
- Konversi dari manusia ke mencit 20 g = 0,0026
- Untuk mencit 20 g = 35 U x 0,0026 = 0,091 U
- Rata-rata BB mencit = 25 g
- Dosis insulin untuk mencit 25 g = $(25 \text{ g}/20 \text{ g}) \times 0,091 \text{ U} = \mathbf{0,11 \text{ U/mencit}}$
- Total kebutuhan = 0,11 U x 4 ekor x 3 hari = 1,3 U
- Dosis pengenceran = 1,3 U insulin + 3 ml aquadest = ± 3 ml lalu dibagi dalam 12 dosis = **0,25 ml (via sub cutan)**

ALLOMETRI

Diketahui / Dicari	Mencit 20 g	Tikus 200 g	Marmut 400 g	Kelinci 1,5 kg	Kucing 1,5 kg	Kera 4 kg	Anjing 12 kg	Manusia 70 kg
Mencit 20 g	1,0	7,0	12,23	27,8	29,7	64,1	124,2	387,9
Tikus 200 g	0,14	1,0	1,74	3,9	4,2	9,2	17,8	56,0
Marmut 400 g	0,08	0,57	1,0	2,25	2,4	5,2	10,2	31,5
Kelinci 1,5 kg	0,04	0,25	0,44	1,0	1,08	2,4	4,5	14,2
Kucing 1,5 kg	0,03	0,23	0,41	0,92	1,0	2,2	4,1	13,0
Kera 4 kg	0,016	0,11	0,19	0,42	0,43	0,1	1,9	6,1
Anjing 12 kg	0,008	0,06	0,1	0,22	1,24	0,52	1,0	3,1
Manusia 70 kg	0,0026	0,018	0,031	0,07	0,076	0,16	0,32	1,0

Lampiran 3. Dokumentasi Penelitian



Gambar 18. Daun sirsak (*Annona muricata L.*) yang sudah dicuci bersih dan siap untuk dikeringkan



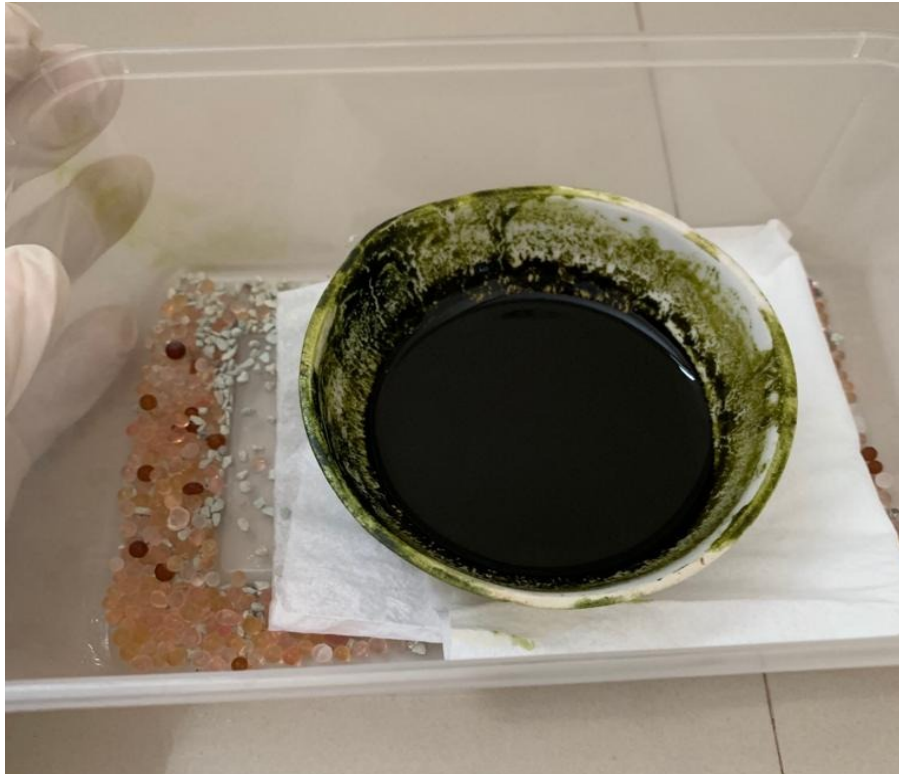
Gambar 19. Proses penyaringan ekstrak ethanol 96% daun sirsak (*Annona muricata L.*)



Gambar 20. Proses pemisahan pelarut ethanol 96% dari ekstrak yang sudah terbentuk melalui alat rotarory evaporator.



Gambar 21. Proses pemanasan ekstrak cair daun sirsak menjadi ekstrak kental melalui alat waterbath



Gambar 22. Ekstrak kental ethanol 96% daun sirsak (*Annona muricata* L.)



Gambar 23. Proses adaptasi hewan uji (*Mus musculus*)



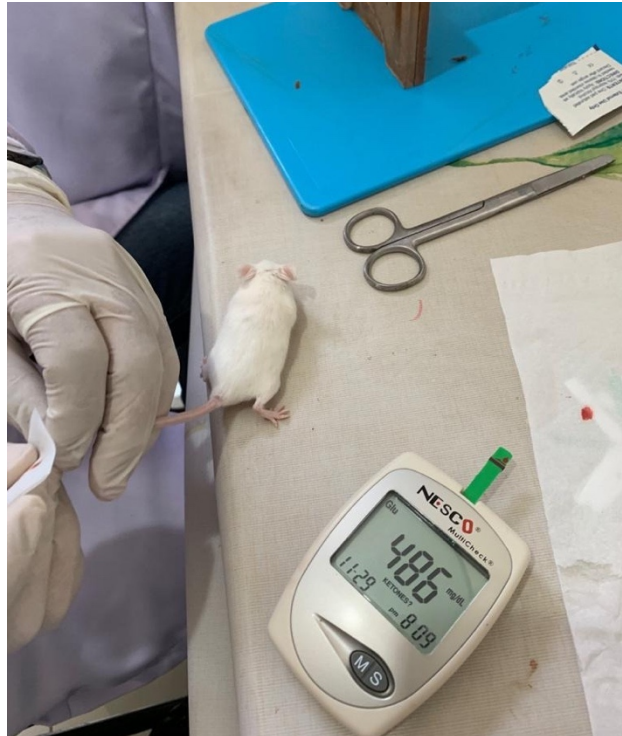
Gambar 24. Penimbangan berat badan hewan uji (*Mus musculus*)



Gambar 25. Pengukuran glukosa darah hewan uji (*Mus musculus*) sebelum intervensi



Gambar 26. Penyuntikan streptozotocin pada hewan uji (*Mus musculus*) via intraperitoneal



Gambar 27. Pengukuran glukosa darah hewan uji (*Mus musculus*) setelah induksi streptozotocin agar menjadi hiperglikemia



Gambar 28. Persiapan intervensi menggunakan ekstrak kental daun sirsak, metformin dan insulin aspart.



Gambar 29. Pemberian ekstrak kental daun sirsak via oral menggunakan sonde lambung



Gambar 30. Pemberian insulin aspart via injeksi subkutan

Lampiran 4. Analisis Data

1. Analisis Data GDP (gula darah puasa)

→ General Linear Model

[DataSet0]

Within-Subjects Factors

Measure: GDP

time	Dependent Variable
1	GDP1
2	GDP2
3	GDP3

Between-Subjects Factors

		N
Kelompok	K-	4
	K+1	3
	K+2	3
	P1	3
	P2	4
	P3	3

Descriptive Statistics

		Mean	Std. Deviation	N
GDP1	K-	137.25	35.650	4
	K+1	122.33	8.737	3
	K+2	135.33	45.960	3
	P1	144.67	11.150	3
	P2	143.50	15.759	4
	P3	140.33	8.505	3
	Total	137.55	23.345	20
GDP2	K-	310.75	74.554	4
	K+1	310.33	36.910	3
	K+2	321.00	54.672	3
	P1	433.00	176.570	3
	P2	327.75	91.584	4
	P3	275.00	38.575	3
	Total	328.60	91.663	20
GDP3	K-	341.50	56.347	4
	K+1	70.67	23.587	3
	K+2	473.00	106.972	3
	P1	128.67	22.679	3
	P2	114.00	9.487	4
	P3	98.67	5.508	3
	Total	206.75	156.185	20

Multivariate Tests^a

Effect		Value	F	Hypothesis df	Error df	Sig.	Partial Eta Squared
time	Pillai's Trace	.850	36.741 ^b	2.000	13.000	.000	.850
	Wilks' Lambda	.150	36.741 ^b	2.000	13.000	.000	.850
	Hotelling's Trace	5.653	36.741 ^b	2.000	13.000	.000	.850
	Roy's Largest Root	5.653	36.741 ^b	2.000	13.000	.000	.850
time * Kelompok	Pillai's Trace	1.152	3.801	10.000	28.000	.003	.576
	Wilks' Lambda	.057	8.281 ^b	10.000	26.000	.000	.761
	Hotelling's Trace	12.857	15.429	10.000	24.000	.000	.865
	Roy's Largest Root	12.567	35.186 ^c	5.000	14.000	.000	.926

a. Design: Intercept + Kelompok
Within Subjects Design: time

b. Exact statistic

c. The statistic is an upper bound on F that yields a lower bound on the significance level.

Mauchly's Test of Sphericity^a

Measure: GDP

Within Subjects Effect	Mauchly's W	Approx. Chi-Square	df	Sig.	Epsilon ^b		
					Greenhouse-Geisser	Huynh-Feldt	Lower-bound
time	.732	4.051	2	.132	.789	1.000	.500

Tests the null hypothesis that the error covariance matrix of the orthonormalized transformed dependent variables is proportional to an identity matrix.

a. Design: Intercept + Kelompok
Within Subjects Design: time

b. May be used to adjust the degrees of freedom for the averaged tests of significance. Corrected tests are displayed in the Tests of Within-Subjects Effects table.

Tests of Within-Subjects Effects

Measure: GDP

Source		Type III Sum of Squares	df	Mean Square	F	Sig.	Partial Eta Squared
time	Sphericity Assumed	374482.871	2	187241.436	57.425	.000	.804
	Greenhouse-Geisser	374482.871	1.578	237376.676	57.425	.000	.804
	Huynh-Feldt	374482.871	2.000	187241.436	57.425	.000	.804
	Lower-bound	374482.871	1.000	374482.871	57.425	.000	.804
time * Kelompok	Sphericity Assumed	324147.233	10	32414.723	9.941	.000	.780
	Greenhouse-Geisser	324147.233	7.888	41093.999	9.941	.000	.780
	Huynh-Feldt	324147.233	10.000	32414.723	9.941	.000	.780
	Lower-bound	324147.233	5.000	64829.447	9.941	.000	.780
Error(time)	Sphericity Assumed	91297.667	28	3260.631			
	Greenhouse-Geisser	91297.667	22.086	4133.688			
	Huynh-Feldt	91297.667	28.000	3260.631			
	Lower-bound	91297.667	14.000	6521.262			

Tests of Within-Subjects Contrasts

Measure: GDP

Source	time	Type III Sum of Squares	df	Mean Square	F	Sig.	Partial Eta Squared
time	Linear	44311.684	1	44311.684	25.867	.000	.649
	Quadratic	330171.187	1	330171.187	68.668	.000	.831
time * Kelompok	Linear	215310.725	5	43062.145	25.138	.000	.900
	Quadratic	108836.508	5	21767.302	4.527	.012	.618
Error(time)	Linear	23982.875	14	1713.062			
	Quadratic	67314.792	14	4808.199			

Levene's Test of Equality of Error Variances^a

		Levene Statistic	df1	df2	Sig.
GDP1	Based on Mean	6.649	5	14	.002
	Based on Median	1.971	5	14	.146
	Based on Median and with adjusted df	1.971	5	4.012	.265
	Based on trimmed mean	6.059	5	14	.003
GDP2	Based on Mean	2.675	5	14	.067
	Based on Median	.948	5	14	.481
	Based on Median and with adjusted df	.948	5	5.082	.522
	Based on trimmed mean	2.529	5	14	.078
GDP3	Based on Mean	5.240	5	14	.006
	Based on Median	1.449	5	14	.268
	Based on Median and with adjusted df	1.449	5	3.494	.386
	Based on trimmed mean	4.882	5	14	.009

Tests the null hypothesis that the error variance of the dependent variable is equal across groups.

a. Design: Intercept + Kelompok
Within Subjects Design: time

Tests of Between-Subjects Effects

Measure: GDP

Transformed Variable: Average

Source	Type III Sum of Squares	df	Mean Square	F	Sig.	Partial Eta Squared
Intercept	2949594.56	1	2949594.56	600.349	.000	.977
Kelompok	149248.683	5	29849.737	6.075	.003	.685
Error	68783.917	14	4913.137			

Post Hoc Tests

Kelompok

Multiple Comparisons

Measure: GDP
Bonferroni

(i) Kelompok	(j) Kelompok	Mean Difference (I-J)	Std. Error	Sig.	95% Confidence Interval	
					Lower Bound	Upper Bound
K-	K+1	95.39	30.908	.121	-13.71	204.48
	K+2	-46.61	30.908	1.000	-155.71	62.48
	P1	27.72	30.908	1.000	-81.37	136.82
	P2	68.08	28.616	.482	-32.92	169.08
	P3	91.83	30.908	.152	-17.26	200.93
K+1	K-	-95.39	30.908	.121	-204.48	13.71
	K+2	-142.00 [*]	33.043	.011	-258.63	-25.37
	P1	-67.67	33.043	.897	-184.29	48.96
	P2	-27.31	30.908	1.000	-136.40	81.79
	P3	-3.56	33.043	1.000	-120.18	113.07
K+2	K-	46.61	30.908	1.000	-62.48	155.71
	K+1	142.00 [*]	33.043	.011	25.37	258.63
	P1	74.33	33.043	.616	-42.29	190.96
	P2	114.69 [*]	30.908	.035	5.60	223.79
	P3	138.44 [*]	33.043	.014	21.82	255.07
P1	K-	-27.72	30.908	1.000	-136.82	81.37
	K+1	67.67	33.043	.897	-48.96	184.29
	K+2	-74.33	33.043	.616	-190.96	42.29
	P2	40.36	30.908	1.000	-68.73	149.46
	P3	64.11	33.043	1.000	-52.52	180.74
P2	K-	-68.08	28.616	.482	-169.08	32.92
	K+1	27.31	30.908	1.000	-81.79	136.40
	K+2	-114.69 [*]	30.908	.035	-223.79	-5.60
	P1	-40.36	30.908	1.000	-149.46	68.73
	P3	23.75	30.908	1.000	-85.34	132.84
P3	K-	-91.83	30.908	.152	-200.93	17.26
	K+1	3.56	33.043	1.000	-113.07	120.18
	K+2	-138.44 [*]	33.043	.014	-255.07	-21.82
	P1	-64.11	33.043	1.000	-180.74	52.52
	P2	-23.75	30.908	1.000	-132.84	85.34

2. Analisis Data BB (berat badan)

→ General Linear Model

Within-Subjects Factors

Measure: BB

time	Dependent Variable
1	BB1
2	BB2
3	BB3

Between-Subjects Factors

Kelompok	N
K-	4
K+1	4
K+2	4
P1	4
P2	4
P3	4

Descriptive Statistics

	Kelompok	Mean	Std. Deviation	N
BB1	K-	27.650	1.3026	4
	K+1	26.125	2.0662	4
	K+2	29.550	1.4434	4
	P1	27.925	1.6958	4
	P2	27.875	1.9602	4
	P3	28.150	1.1561	4
	Total	27.879	1.7730	24
BB2	K-	24.250	2.0599	4
	K+1	23.500	3.1038	4
	K+2	26.250	2.9000	4
	P1	26.025	2.1975	4
	P2	26.900	1.7029	4
	P3	24.875	2.5863	4
	Total	25.300	2.5036	24
BB3	K-	23.200	2.4993	4
	K+1	25.775	1.2997	4
	K+2	25.025	2.4798	4
	P1	25.550	2.0091	4
	P2	25.075	2.6235	4
	P3	27.700	1.5427	4
	Total	25.388	2.3248	24

Multivariate Tests^a

Effect		Value	F	Hypothesis df	Error df	Sig.	Partial Eta Squared
time	Pillai's Trace	.836	43.261 ^b	2.000	17.000	.000	.836
	Wilks' Lambda	.164	43.261 ^b	2.000	17.000	.000	.836
	Hotelling's Trace	5.089	43.261 ^b	2.000	17.000	.000	.836
	Roy's Largest Root	5.089	43.261 ^b	2.000	17.000	.000	.836
time * Kelompok	Pillai's Trace	.804	2.419	10.000	36.000	.025	.402
	Wilks' Lambda	.350	2.345 ^b	10.000	34.000	.031	.408
	Hotelling's Trace	1.415	2.264	10.000	32.000	.039	.414
	Roy's Largest Root	.953	3.431 ^c	5.000	18.000	.024	.488

a. Design: Intercept + Kelompok
Within Subjects Design: time

b. Exact statistic

c. The statistic is an upper bound on F that yields a lower bound on the significance level.

Mauchly's Test of Sphericity^a

Measure: BB

Within Subjects Effect	Mauchly's W	Approx. Chi-Square	df	Sig.	Epsilon ^b		
					Greenhouse-Geisser	Huynh-Feldt	Lower-bound
time	.807	3.636	2	.162	.839	1.000	.500

Tests the null hypothesis that the error covariance matrix of the orthonormalized transformed dependent variables is proportional to an identity matrix.

a. Design: Intercept + Kelompok
Within Subjects Design: time

b. May be used to adjust the degrees of freedom for the averaged tests of significance. Corrected tests are displayed in the Tests of Within-Subjects Effects table.

Tests of Within-Subjects Effects

Measure: BB

Source		Type III Sum of Squares	df	Mean Square	F	Sig.	Partial Eta Squared
time	Sphericity Assumed	102.945	2	51.473	27.068	.000	.601
	Greenhouse-Geisser	102.945	1.677	61.385	27.068	.000	.601
	Huynh-Feldt	102.945	2.000	51.473	27.068	.000	.601
	Lower-bound	102.945	1.000	102.945	27.068	.000	.601
time * Kelompok	Sphericity Assumed	54.423	10	5.442	2.862	.010	.443
	Greenhouse-Geisser	54.423	8.385	6.490	2.862	.016	.443
	Huynh-Feldt	54.423	10.000	5.442	2.862	.010	.443
	Lower-bound	54.423	5.000	10.885	2.862	.045	.443
Error(time)	Sphericity Assumed	68.458	36	1.902			
	Greenhouse-Geisser	68.458	30.187	2.268			
	Huynh-Feldt	68.458	36.000	1.902			
	Lower-bound	68.458	18.000	3.803			

Tests of Within-Subjects Contrasts

Measure: BB

Source	time	Type III Sum of Squares	df	Mean Square	F	Sig.	Partial Eta Squared
time	Linear	74.501	1	74.501	37.237	.000	.674
	Quadratic	28.444	1	28.444	15.780	.001	.467
time * Kelompok	Linear	33.667	5	6.733	3.365	.025	.483
	Quadratic	20.756	5	4.151	2.303	.088	.390
Error(time)	Linear	36.013	18	2.001			
	Quadratic	32.446	18	1.803			

Post Hoc Tests

Kelompok

Multiple Comparisons

Measure: BB
Bonferroni

(I) Kelompok	(J) Kelompok	Mean Difference (I-J)	Std. Error	Sig.	95% Confidence Interval	
					Lower Bound	Upper Bound
K-	K+1	-.100	1.2624	1.000	-4.367	4.167
	K+2	-1.908	1.2624	1.000	-6.176	2.359
	P1	-1.467	1.2624	1.000	-5.734	2.801
	P2	-1.583	1.2624	1.000	-5.851	2.684
	P3	-1.875	1.2624	1.000	-6.142	2.392
K+1	K-	.100	1.2624	1.000	-4.167	4.367
	K+2	-1.808	1.2624	1.000	-6.076	2.459
	P1	-1.367	1.2624	1.000	-5.634	2.901
	P2	-1.483	1.2624	1.000	-5.751	2.784
	P3	-1.775	1.2624	1.000	-6.042	2.492
K+2	K-	1.908	1.2624	1.000	-2.359	6.176
	K+1	1.808	1.2624	1.000	-2.459	6.076
	P1	.442	1.2624	1.000	-3.826	4.709
	P2	.325	1.2624	1.000	-3.942	4.592
	P3	.033	1.2624	1.000	-4.234	4.301
P1	K-	1.467	1.2624	1.000	-2.801	5.734
	K+1	1.367	1.2624	1.000	-2.901	5.634
	K+2	-.442	1.2624	1.000	-4.709	3.826
	P2	-.117	1.2624	1.000	-4.384	4.151
	P3	-.408	1.2624	1.000	-4.676	3.859
P2	K-	1.583	1.2624	1.000	-2.684	5.851
	K+1	1.483	1.2624	1.000	-2.784	5.751
	K+2	-.325	1.2624	1.000	-4.592	3.942
	P1	.117	1.2624	1.000	-4.151	4.384
	P3	-.292	1.2624	1.000	-4.559	3.976
P3	K-	1.875	1.2624	1.000	-2.392	6.142
	K+1	1.775	1.2624	1.000	-2.492	6.042
	K+2	-.033	1.2624	1.000	-4.301	4.234
	P1	.408	1.2624	1.000	-3.859	4.676
	P2	.292	1.2624	1.000	-3.976	4.559

Based on the observed means

Nomor : 132/UN6.C9/TU/MKB/2020
Attachment(s) : -
Subject : Letter of Acceptance

October 30, 2020

Dear Nur Fadhillah Khalid, dr,

We would like to inform you that your manuscript entitled:

**Antihyperglycemic Effectiveness Test of 96% Ethanol Extract of Soursop Leaves
on Mus musculus Induced by Streptozotocin**


Nur Fadhillah Khalid, Peter Kabo, Natsir Djide

has been accepted to be published in forthcoming issue of Majalah Kedokteran Bandung
(MKB Volume 52 Number 3 Year 2020).

Contributors of the articles accepted for publication will receive a complimentary copy of the
issue in which their article appears.

Thank you very much for your submission to Majalah Kedokteran Bandung.

Sincerely yours,


MKB
Majalah Kedokteran Bandung

Ahmad Faried, dr., SpBS(K), Ph.D
Editor-in-Chief