

DAFTAR PUSTAKA

- Asmawati, A. (2017) "Identification of inorganic compounds in eggshell as a dental remineralization material," *Journal of Dentomaxillofacial Science*, 2(3), hal. 168. doi: 10.15562/jdmfs.v2i3.622.
- Chen, S. *et al.* (2008) "Bone morphogenetic protein 2 mediates dentin sialophosphoprotein expression and odontoblast differentiation via NF- κ B signaling," *Journal of Biological Chemistry*, 283(28), hal. 19359–19370. doi: 10.1074/jbc.M709492200.
- Chuang, S. *et al.* (2022) "Dentin Sialoprotein/Phosphophoryn (DSP/PP) as Bio-Inductive Materials for Direct Pulp Capping," *Journal Polymers*, 14, hal. 1–16.
- Das, S. (2020) "Pulp Capping Agents: An Evolutionary Review," *International journal of dental science and innovative research.*, 3(6), hal. 240–251. Tersedia pada: www.ijdsir.com.
- Dahlan, MS. (2009) "Statistik untuk Kedokteran dan Kesehatan." Jakarta: Salemba Medika. Hal 83.
- Edahwati, L. *et al.* (2022) "Synthesis of Calcium Phosphate from Boiler Egg Shells as Raw Material for Hydroxyapatite," 2022, hal. 108–113. doi: 10.11594/nstp.2022.2718.
- Elbahrawy, E. dan El -Dosoky, A. (2019) "Remineralization Potential of Chicken Eggshell Powder in The Treatment of Artificially Induced Enamel Carious lesion in Permanent Teeth," *Egyptian Dental Journal*, 65(4), hal. 3581–3593. doi: 10.21608/edj.2019.75976.
- Elsalamony, N. A., Abdel-hamid, D. M. dan Bakir, N. G. (2018) "Bioactivity of a NanoEggshell-modified Calcium Hydroxide Dental Cement : An In-vitro Study," *Journal of Dental and Medical Science*, 17(7), hal. 68–78. doi: 10.9790/0853-1707037080.
- Faridi, H. dan Arabhosseini, A. (2018) "Application of eggshell wastes as valuable and utilizable products: A review," *Research in Agricultural Engineering*, 64(2), hal. 104–114. doi: 10.17221/6/2017-RAE.
- Gappar, H. (2022) *Eksresi Transforming Growth Factor- β 1 (TGF- β 1) setelah Aplikasi Pasta Cangkang Telur Ayam Ras (Gallus sp) pada Pulpa Gigi Kelinci New Zealand (Oryctolagus Cuniculus) yang Terinflamasi*. Hasanuddin University. Tersedia pada: <http://repository.unhas.ac.id:443/id/eprint/18345>.
- Goldberg, M. (2014) *The Dental Pulp, The Dental Pulp*. doi: 10.1007/978-3-642-

55160-4.

- Goldberg, M. dan Smith, A. J. (2004) “Cells and Extracellular Matrices of Dentin and Pulp: A Biological Basis for Repair and Tissue Engineering,” *Critical Reviews in Oral Biology and Medicine*, 1(15), hal. 13–27.
- Gopikrishna, V. (2021) *Grossman’s Endodontic Practice*. 14th editi. Diedit oleh V. Gopikrishna. India: Wolters Kluwer Health.
- Haghgoo, R. *et al.* (2016) “Remineralization Effect of Eggshell versus Nano-hydroxyapatite on Caries-like Lesions in Permanent Teeth (In Vitro),” *Journal of International Oral Health*, 8(4), hal. 435–439. doi: 10.2047/jioh-08-04-05.
- Hanna, S. N., Alfayate, R. P. dan Prichard, J. (2020) “Vital pulp therapy an insight over the available literature and future expectations,” *European Endodontic Journal*, 5(3), hal. 46–53. doi: 10.14744/eej.2019.44154.
- Hilton, T. J., Ferracane, J. L. dan Mancl, L. (2013) “Comparison of CaOH with MTA for Direct Pulp Capping: A PBRN Randomized Clinical Trial,” *Journal of Dental Research*, 92(July), hal. S16–S22. doi: 10.1177/0022034513484336.
- Hincke, M. T. *et al.* (2012) “The eggshell: structure, composition and mineralization,” *Frontier in Bioscience*, 17, hal. 1266–1280. doi: 10.1109/epqu.2011.6128966.
- Ikawati, N. T. (2022) *Ekspresi Osteocalcin setelah Aplikasi Pasta Cangkang Telur Ayam Ras (Gallus sp) pada Pulpa Gigi Kelinci New Zealand (Oryctolagus Cuniculus) yang Terinflamasi*. Hasanuddin University. Tersedia pada: <http://repository.unhas.ac.id:443/id/eprint/18357>.
- Islam, R. *et al.* (2023) “Direct pulp capping procedures – Evidence and practice,” *Japanese Dental Science Review*, 59, hal. 48–61. doi: 10.1016/j.jdsr.2023.02.002.
- Kleinert, A. *et al.* (2018) “Endodontium — together or separately?,” *Folia Morphologica (Poland)*, 77(3), hal. 409–415. doi: 10.5603/FM.a2018.0008.
- Liu, M. M. *et al.* (2021) “Dentine sialophosphoprotein signal in dentineogenesis and dentine regeneration,” *European Cells and Materials*, 42, hal. 43–62. doi: 10.22203/eCM.v042a04.
- MacDougall, M. *et al.* (1997) “Dentin phosphoprotein and dentin sialoprotein are cleavage products expressed from a single transcript coded by a gene on human chromosome 4: Dentin phosphoprotein DNA sequence determination,” *Journal of Biological Chemistry*, 272(2), hal. 835–842.


doi: 10.1074/jbc.272.2.835.

- Majaya, M. (2022) *Ekspresi Dentin Matrix Protein (DMP-1) setelah Aplikasi Pasta Cangkang Telur Ayam Ras (Gallus sp) pada Pulpa Gigi Kelinci New Zealand (Oryctolagus Cuniculus) yang Terinflamasi*. Hasanuddin University. Tersedia pada: <http://repository.unhas.ac.id:443/id/eprint/18343>.
- Mohamed, E. *et al.* (2020) “Remineralization Effect of Egg Shell Powder and Novamine on Initial Caries-Like Lesions in Young Permanent Teeth (in-Vitro Study),” *Alexandria Dental Journal*, 0(0), hal. 0–0. doi: 10.21608/adjalexu.2020.86761.
- Mohd Pu’ad, N. A. S. *et al.* (2019) “Synthesis of eggshell derived hydroxyapatite via chemical precipitation and calcination method,” *Materials Today: Proceedings*, 42(January), hal. 172–177. doi: 10.1016/j.matpr.2020.11.276.
- Mount, G. J. *et al.* (ed.) (2016) *Preservation and Restoration of Tooth Structure*. Third. New Dehli, India: Wiley Blackwell. doi: 10.1038/sj.bdj.4812453.
- Niranjani, K. *et al.* (2015) “Clinical evaluation of success of primary teeth pulpotomy using mineral trioxide aggregate®, laser and biodentine™-an in vivo study,” *Journal of Clinical and Diagnostic Research*, 9(4), hal. 35–37. doi: 10.7860/JCDR/2015/13153.5823.
- Noviyanti, A. R. *et al.* (2017) “Cangkang Telur Ayam sebagai Sumber Kalsium dalam Pembuatan Hidroksiapatit untuk Aplikasi Graft Tulang,” *Chimica et Natura Acta*, 5(3), hal. 107. doi: 10.24198/cna.v5.n3.16057.
- Nurlaela, A. *et al.* (2014) “Pemanfaatan Limbah Cangkang Telur Ayam dan Bebek sebagai Sumber Kalsium untuk Sintesis Mineral Tulang,” *Jurnal Pendidikan Fisika Indonesia*, 10(1), hal. 81–85. doi: 10.15294/jpfi.v10i1.3054.
- Okiji, T. dan Yoshiba, K. (2009) “Reparative Dentinogenesis Induced by Mineral Trioxide Aggregate : A Review from the Biological and Physicochemical Points of View,” 2009. doi: 10.1155/2009/464280.
- Reddy, S. P. *et al.* (2020) “Clinical comparison of eggshell derived calcium hydroxyapatite with dycal® as indirect pulp capping agents in primary molars,” *Pesquisa Brasileira em Odontopediatria e Clinica Integrada*, 20(July), hal. 1–9. doi: 10.1590/pboci.2020.151.
- Rezaee, M., Movassaghi, A. R. dan Maleki, M. (2017) “Immunohistochemical expression of transforming growth factor Beta-1 in canine mammary carcinomas: its relationships with histologic grading, survival rate, and


- recurrence,” *Comparative Clinical Pathology*, 26(3), hal. 519–524. doi: 10.1007/s00580-017-2410-x.
- Ricucci, D. dan Siqueira Jr, J. F. (2013) *Endodontology*. London: Quintessence Publishing.
- Salah, M. *et al.* (2018) “Evaluation of eggshell powder as an experimental direct pulp capping material,” *Future Dental Journal*, 4(2), hal. 160–164. doi: 10.1016/j.fdj.2018.05.008.
- Sangwan, P. *et al.* (2013) “Tertiary dentinogenesis with calcium hydroxide: A review of proposed mechanisms,” *International Endodontic Journal*, 46(1), hal. 3–19. doi: 10.1111/j.1365-2591.2012.02101.x.
- Simon, S. *et al.* (2009) “Molecular characterization of young and mature odontoblasts,” *Bone*, 45(4), hal. 693–703. doi: 10.1016/j.bone.2009.06.018.
- Siqueira, J. F. dan Rôças, I. N. (2013) “Microbiology and treatment of acute apical abscesses,” *Clinical Microbiology Reviews*, 26(2), hal. 255–273. doi: 10.1128/CMR.00082-12.
- Siswanto, Susila, Suyanto. (2014) "Metodologi Penelitian Kesehatan dan Kedokteran." Yogyakarta: Bursa Ilmu. Hal 81.
- Song, M. *et al.* (2018) “Clinical and molecular perspectives of reparative dentin formation: Lessons learned from pulp-capping materials and the emerging roles of calcium,” 61(1), hal. 93–110. doi: 10.1016/j.cden.2016.08.008.Clinical.
- Suzuki, S. *et al.* (2012) “Dentin Sialophosphoprotein and Dentin Matrix Protein-1: Two Highly Phosphorylated Proteins in Mineralized Tissues,” *Archives Oral Biology*, 57(9), hal. 1165–1175. doi: 10.1016/j.archoralbio.2012.03.005.Dentin.
- Tjäderhane, L. (2002) “The mechanism of pulpal wound healing,” *Australian Endodontic Journal*, 28(2), hal. 68–74. doi: 10.1111/j.1747-4477.2002.tb00386.x.
- Valletta, A. *et al.* (2023) “Regeneration of dentin-pulp complex: Effect of calcium-based materials on hDPSCs differentiation and gene expression,” *Dental Materials*, 39(5), hal. 485–491. doi: 10.1016/j.dental.2023.03.017.
- Yamakoshi, Y. (2009) “Dentinogenesis and Dentin Sialophosphoprotein (DSPP),” *Journal of Oral Biosciences*, 51(3), hal. 134–146. doi: 10.2330/joralbiosci.51.134.Dentinogenesis.

LAMPIRAN-LAMPIRAN

A. Surat Rekomendasi Persetujuan Komisi Etik



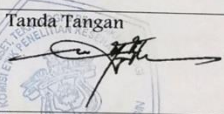
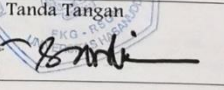
KEMENTERIAN RISET, TEKNOLOGI DAN PENDIDIKAN TINGGI
UNIVERSITAS HASANUDDIN
FAKULTAS KEDOKTERAN GIGI
RUMAH SAKIT GIGI DAN MULUT
KOMITE ETIK PENELITIAN KESEHATAN
 Sekretariat : Lantai 2, Gedung Lama RSGM Unhas
 JL.Kandea No. 5 Makassar
 Contact Person: drg. Muhammad Ikbal, Sp.Prof/Nur Aedah AR TELP. 081342971011/08114919191



REKOMENDASI PERETUJUAN ETIK
 Nomor: 0024/PL.09/KEPK FKG-RSGM UNHAS/2023

Tanggal: 06 Februari 2023

Dengan ini menyatakan bahwa protokol dan dokumen yang berhubungan dengan protokol berikut ini telah mendapatkan persetujuan etik:

No. Protokol	UH 17120763	No Protokol Sponsor	
Peneliti Utama	drg. Lestari Hardianti Sugiaman	Sponsor	Pribadi
Judul Peneliti	Ekspresi <i>Dentinsialo-Phosphoprotein (DSSP)</i> setelah Aplikasi Pasta Cangkang Telur Ayam Ras (<i>Gallus Sp</i>) pada Pulpa Ggi Kelinci (<i>Oryctolagus Cuniculus</i>) yang Terinflamasi		
No. Versi Protokol	1	Tanggal Versi	24 Januari 2023
No. Versi Protokol		Tanggal Versi	
Tempat Penelitian	1. Laboratorium STIFA Makassar. 2. Klinik Kedokteran Hewan fakultaskedokteran Universitas Hasanuddin Makassar. 3. Laboratorium Dental Fakultas Kedokteran Gigi Universitas Hasanuddin Makassar. 4. Laboratorium Patologi Anatomi Rumah Sakit Pendidikan Universitas Hasanuddin Makassar. 5. Laboratorium Biokimia Biomolekuler Fakultas Kedokteran Universitas Brawijaya Malang.		
Dokumen Lain			
Jenis Review	<input type="checkbox"/> Exempted <input checked="" type="checkbox"/> Expedited <input type="checkbox"/> Fullboard	Masa Berlaku 06 Februari 2023-06 Februari 2024	Frekuensi Review Lanjutan
Ketua Komisi Etik Penelitian	Nama: Dr. drg. Marhamah, M.Kes	Tanda Tangan 	Tanggal
Sekretaris Komisi Etik Penelitian	Nama: drg. Muhammad Ikbal, Sp.Prof	Tanda Tangan 	Tanggal

Kewajiban peneliti utama:

- Menyerahkan Amandemen Protokol untuk persetujuan sebelum diimplementasikan
- Menyerahkan laporan SAE ke Komisi Etik dalam 24 Jam dan dilengkapi dalam 7 hari dan lapor SUSAR dalam 72 jam setelah peneliti utama menerima laporan.
- Menyerahkan laporan kemajuan (*progress report*) setiap 6 bulan untuk penelitian resiko tinggi dan setiap setahun untuk penelitian resiko rendah.
- Menyerahkan laporan akhir setelah penelitian berakhir.
- Melaporkan penyimpangan dari protokol yang disetujui (*protocol deviation/violation*)
- Mematuhi semua aturan yang berlaku

B. Hasil analisis uji statistik menggunakan SPSS 26 for windows

```
ONEWAY DSPP BY KELOMPOK
  /STATISTICS DESCRIPTIVES HOMOGENEITY
  /MISSING ANALYSIS
  /POSTHOC=TUKEY ALPHA(0.05).
```

Oneway

Notes		
Output Created		15-JUN-2022 13:34:00
Comments		
Input	Data	C:\Users\Panasonic\Documents\DATA RAHMI.sav
	Active Dataset	DataSet0
	Filter	<none>
	Weight	<none>
	Split File	<none>
	N of Rows in Working Data File	48
Missing Value Handling	Definition of Missing	User-defined missing values are treated as missing.
	Cases Used	Statistics for each analysis are based on cases with no missing data for any variable in the analysis.
Syntax		ONEWAY DSPP BY KELOMPOK /STATISTICS DESCRIPTIVES HOMOGENEITY /MISSING ANALYSIS /POSTHOC=TUKEY ALPHA(0.05).
Resources	Processor Time	00:00:00,13
	Elapsed Time	00:00:00,14

[DataSet0] C:\Users\Panasonic\Documents\DATA RAHMI.sav

Descriptives

DSPP

	N	Mean	Std. Deviation	Std. Error	95% Confidence Interval for Mean		Min	Max
					Lower Bound	Upper Bound		
K - (3)	3	8,67	1,528	,882	4,87	12,46	7	10
K + (3)	3	5,00	1,000	,577	2,52	7,48	4	6
P1 (3)	3	7,33	1,528	,882	3,54	11,13	6	9
P2 (3)	3	8,00	1,000	,577	5,52	10,48	7	9
K - (7)	3	7,67	1,155	,667	4,80	10,54	7	9
K + (7)	3	3,00	1,000	,577	,52	5,48	2	4
P1 (7)	3	9,00	1,000	,577	6,52	11,48	8	10
P2 (7)	3	10,67	,577	,333	9,23	12,10	10	11
K - (14)	3	8,33	1,155	,667	5,46	11,20	7	9
K + (14)	3	5,00	1,000	,577	2,52	7,48	4	6
P1 (14)	3	10,67	2,082	1,202	5,50	15,84	9	13
P2 (14)	3	12,67	2,517	1,453	6,42	18,92	10	15
K - (21)	3	7,67	1,155	,667	4,80	10,54	7	9
K+ (21)	3	6,00	2,646	1,528	-,57	12,57	4	9
P1 (21)	3	12,33	2,517	1,453	6,08	18,58	10	15
P2 (21)	3	13,33	3,512	2,028	4,61	22,06	10	17
Total	48	8,46	3,222	,465	7,52	9,39	2	17

Test of Homogeneity of Variances

DSPP

Levene Statistic	df1	df2	Sig.
1,470	15	32	,176

ANOVA

DSPP

	Sum of Squares	df	Mean Square	F	Sig.
Between Groups	387,250	15	25,817	8,207	,000
Within Groups	100,667	32	3,146		
Total	487,917	47			

Post Hoc Tests

Multiple Comparisons

Dependent Variable: DSPP

Tukey HSD

(I) KELOMPOK	(J) KELOMPOK	Mean Difference (I-J)	Std. Error	Sig.	95% Confidence Interval	
					Lower Bound	Upper Bound
K - (3)	K + (3)	3,667	1,448	,475	-1,70	9,04
	P1 (3)	1,333	1,448	1,000	-4,04	6,70
	P2 (3)	,667	1,448	1,000	-4,70	6,04
	K - (7)	1,000	1,448	1,000	-4,37	6,37
	K + (7)	5,667*	1,448	,031	,30	11,04
	P1 (7)	-,333	1,448	1,000	-5,70	5,04
	P2 (7)	-2,000	1,448	,988	-7,37	3,37
	K - (14)	,333	1,448	1,000	-5,04	5,70
	K + (14)	3,667	1,448	,475	-1,70	9,04
	P1 (14)	-2,000	1,448	,988	-7,37	3,37
	P2 (14)	-4,000	1,448	,338	-9,37	1,37
	K - (21)	1,000	1,448	1,000	-4,37	6,37
	K+ (21)	2,667	1,448	,883	-2,70	8,04
	P1 (21)	-3,667	1,448	,475	-9,04	1,70
	P2 (21)	-4,667	1,448	,146	-10,04	,70
K + (3)	K - (3)	-3,667	1,448	,475	-9,04	1,70
	P1 (3)	-2,333	1,448	,954	-7,70	3,04
	P2 (3)	-3,000	1,448	,769	-8,37	2,37
	K - (7)	-2,667	1,448	,883	-8,04	2,70
	K + (7)	2,000	1,448	,988	-3,37	7,37
	P1 (7)	-4,000	1,448	,338	-9,37	1,37
	P2 (7)	-5,667*	1,448	,031	-11,04	-,30
	K - (14)	-3,333	1,448	,625	-8,70	2,04
	K + (14)	,000	1,448	1,000	-5,37	5,37
	P1 (14)	-5,667*	1,448	,031	-11,04	-,30
	P2 (14)	-7,667*	1,448	,001	-13,04	-2,30
	K - (21)	-2,667	1,448	,883	-8,04	2,70
	K+ (21)	-1,000	1,448	1,000	-6,37	4,37
	P1 (21)	-7,333*	1,448	,001	-12,70	-1,96
	P2 (21)	-8,333*	1,448	,000	-13,70	-2,96

P1 (3)	K - (3)	-1,333	1,448	1,000	-6,70	4,04
	K + (3)	2,333	1,448	,954	-3,04	7,70
	P2 (3)	-,667	1,448	1,000	-6,04	4,70
	K - (7)	-,333	1,448	1,000	-5,70	5,04
	K + (7)	4,333	1,448	,228	-1,04	9,70
	P1 (7)	-1,667	1,448	,998	-7,04	3,70
	P2 (7)	-3,333	1,448	,625	-8,70	2,04
	K - (14)	-1,000	1,448	1,000	-6,37	4,37
	K + (14)	2,333	1,448	,954	-3,04	7,70
	P1 (14)	-3,333	1,448	,625	-8,70	2,04
	P2 (14)	-5,333	1,448	,053	-10,70	,04
	K - (21)	-,333	1,448	1,000	-5,70	5,04
	K+ (21)	1,333	1,448	1,000	-4,04	6,70
	P1 (21)	-5,000	1,448	,089	-10,37	,37
P2 (21)	-6,000*	1,448	,017	-11,37	-,63	
P2 (3)	K - (3)	-,667	1,448	1,000	-6,04	4,70
	K + (3)	3,000	1,448	,769	-2,37	8,37
	P1 (3)	,667	1,448	1,000	-4,70	6,04
	K - (7)	,333	1,448	1,000	-5,04	5,70
	K + (7)	5,000	1,448	,089	-,37	10,37
	P1 (7)	-1,000	1,448	1,000	-6,37	4,37
	P2 (7)	-2,667	1,448	,883	-8,04	2,70
	K - (14)	-,333	1,448	1,000	-5,70	5,04
	K + (14)	3,000	1,448	,769	-2,37	8,37
	P1 (14)	-2,667	1,448	,883	-8,04	2,70
	P2 (14)	-4,667	1,448	,146	-10,04	,70
	K - (21)	,333	1,448	1,000	-5,04	5,70
	K+ (21)	2,000	1,448	,988	-3,37	7,37
	P1 (21)	-4,333	1,448	,228	-9,70	1,04
P2 (21)	-5,333	1,448	,053	-10,70	,04	
K - (7)	K - (3)	-1,000	1,448	1,000	-6,37	4,37
	K + (3)	2,667	1,448	,883	-2,70	8,04
	P1 (3)	,333	1,448	1,000	-5,04	5,70
	P2 (3)	-,333	1,448	1,000	-5,70	5,04
	K + (7)	4,667	1,448	,146	-,70	10,04
	P1 (7)	-1,333	1,448	1,000	-6,70	4,04
	P2 (7)	-3,000	1,448	,769	-8,37	2,37
	K - (14)	-,667	1,448	1,000	-6,04	4,70
	K + (14)	2,667	1,448	,883	-2,70	8,04
	P1 (14)	-3,000	1,448	,769	-8,37	2,37

	P2 (14)	-5,000	1,448	,089	-10,37	,37
	K - (21)	,000	1,448	1,000	-5,37	5,37
	K+ (21)	1,667	1,448	,998	-3,70	7,04
	P1 (21)	-4,667	1,448	,146	-10,04	,70
	P2 (21)	-5,667*	1,448	,031	-11,04	-,30
	K - (3)	-5,667*	1,448	,031	-11,04	-,30
	K + (3)	-2,000	1,448	,988	-7,37	3,37
	P1 (3)	-4,333	1,448	,228	-9,70	1,04
	P2 (3)	-5,000	1,448	,089	-10,37	,37
	K - (7)	-4,667	1,448	,146	-10,04	,70
	P1 (7)	-6,000*	1,448	,017	-11,37	-,63
	P2 (7)	-7,667*	1,448	,001	-13,04	-2,30
K + (7)	K - (14)	-5,333	1,448	,053	-10,70	,04
	K + (14)	-2,000	1,448	,988	-7,37	3,37
	P1 (14)	-7,667*	1,448	,001	-13,04	-2,30
	P2 (14)	-9,667*	1,448	,000	-15,04	-4,30
	K - (21)	-4,667	1,448	,146	-10,04	,70
	K+ (21)	-3,000	1,448	,769	-8,37	2,37
	P1 (21)	-9,333*	1,448	,000	-14,70	-3,96
	P2 (21)	-10,333*	1,448	,000	-15,70	-4,96
	K - (3)	,333	1,448	1,000	-5,04	5,70
	K + (3)	4,000	1,448	,338	-1,37	9,37
	P1 (3)	1,667	1,448	,998	-3,70	7,04
	P2 (3)	1,000	1,448	1,000	-4,37	6,37
	K - (7)	1,333	1,448	1,000	-4,04	6,70
	K + (7)	6,000*	1,448	,017	,63	11,37
	P2 (7)	-1,667	1,448	,998	-7,04	3,70
P1 (7)	K - (14)	,667	1,448	1,000	-4,70	6,04
	K + (14)	4,000	1,448	,338	-1,37	9,37
	P1 (14)	-1,667	1,448	,998	-7,04	3,70
	P2 (14)	-3,667	1,448	,475	-9,04	1,70
	K - (21)	1,333	1,448	1,000	-4,04	6,70
	K+ (21)	3,000	1,448	,769	-2,37	8,37
	P1 (21)	-3,333	1,448	,625	-8,70	2,04
	P2 (21)	-4,333	1,448	,228	-9,70	1,04
	K - (3)	2,000	1,448	,988	-3,37	7,37
	K + (3)	5,667*	1,448	,031	,30	11,04
P2 (7)	P1 (3)	3,333	1,448	,625	-2,04	8,70
	P2 (3)	2,667	1,448	,883	-2,70	8,04
	K - (7)	3,000	1,448	,769	-2,37	8,37

	K + (7)	7,667*	1,448	,001	2,30	13,04
	P1 (7)	1,667	1,448	,998	-3,70	7,04
	K - (14)	2,333	1,448	,954	-3,04	7,70
	K + (14)	5,667*	1,448	,031	,30	11,04
	P1 (14)	,000	1,448	1,000	-5,37	5,37
	P2 (14)	-2,000	1,448	,988	-7,37	3,37
	K - (21)	3,000	1,448	,769	-2,37	8,37
	K+ (21)	4,667	1,448	,146	-,70	10,04
	P1 (21)	-1,667	1,448	,998	-7,04	3,70
	P2 (21)	-2,667	1,448	,883	-8,04	2,70
	K - (3)	-,333	1,448	1,000	-5,70	5,04
	K + (3)	3,333	1,448	,625	-2,04	8,70
	P1 (3)	1,000	1,448	1,000	-4,37	6,37
	P2 (3)	,333	1,448	1,000	-5,04	5,70
	K - (7)	,667	1,448	1,000	-4,70	6,04
	K + (7)	5,333	1,448	,053	-,04	10,70
	P1 (7)	-,667	1,448	1,000	-6,04	4,70
K - (14)	P2 (7)	-2,333	1,448	,954	-7,70	3,04
	K + (14)	3,333	1,448	,625	-2,04	8,70
	P1 (14)	-2,333	1,448	,954	-7,70	3,04
	P2 (14)	-4,333	1,448	,228	-9,70	1,04
	K - (21)	,667	1,448	1,000	-4,70	6,04
	K+ (21)	2,333	1,448	,954	-3,04	7,70
	P1 (21)	-4,000	1,448	,338	-9,37	1,37
	P2 (21)	-5,000	1,448	,089	-10,37	,37
	K - (3)	-3,667	1,448	,475	-9,04	1,70
	K + (3)	,000	1,448	1,000	-5,37	5,37
	P1 (3)	-2,333	1,448	,954	-7,70	3,04
	P2 (3)	-3,000	1,448	,769	-8,37	2,37
	K - (7)	-2,667	1,448	,883	-8,04	2,70
	K + (7)	2,000	1,448	,988	-3,37	7,37
	P1 (7)	-4,000	1,448	,338	-9,37	1,37
K + (14)	P2 (7)	-5,667*	1,448	,031	-11,04	-,30
	K - (14)	-3,333	1,448	,625	-8,70	2,04
	P1 (14)	-5,667*	1,448	,031	-11,04	-,30
	P2 (14)	-7,667*	1,448	,001	-13,04	-2,30
	K - (21)	-2,667	1,448	,883	-8,04	2,70
	K+ (21)	-1,000	1,448	1,000	-6,37	4,37
	P1 (21)	-7,333*	1,448	,001	-12,70	-1,96
	P2 (21)	-8,333*	1,448	,000	-13,70	-2,96

P1 (14)	K - (3)	2,000	1,448	,988	-3,37	7,37
	K + (3)	5,667*	1,448	,031	,30	11,04
	P1 (3)	3,333	1,448	,625	-2,04	8,70
	P2 (3)	2,667	1,448	,883	-2,70	8,04
	K - (7)	3,000	1,448	,769	-2,37	8,37
	K + (7)	7,667*	1,448	,001	2,30	13,04
	P1 (7)	1,667	1,448	,998	-3,70	7,04
	P2 (7)	,000	1,448	1,000	-5,37	5,37
	K - (14)	2,333	1,448	,954	-3,04	7,70
	K + (14)	5,667*	1,448	,031	,30	11,04
	P2 (14)	-2,000	1,448	,988	-7,37	3,37
	K - (21)	3,000	1,448	,769	-2,37	8,37
	K+ (21)	4,667	1,448	,146	-,70	10,04
	P2 (14)	P1 (21)	-1,667	1,448	,998	-7,04
P2 (21)		-2,667	1,448	,883	-8,04	2,70
K - (3)		4,000	1,448	,338	-1,37	9,37
K + (3)		7,667*	1,448	,001	2,30	13,04
P1 (3)		5,333	1,448	,053	-,04	10,70
P2 (3)		4,667	1,448	,146	-,70	10,04
K - (7)		5,000	1,448	,089	-,37	10,37
K + (7)		9,667*	1,448	,000	4,30	15,04
P1 (7)		3,667	1,448	,475	-1,70	9,04
P2 (7)		2,000	1,448	,988	-3,37	7,37
K - (14)		4,333	1,448	,228	-1,04	9,70
K + (14)		7,667*	1,448	,001	2,30	13,04
P1 (14)		2,000	1,448	,988	-3,37	7,37
K - (21)		5,000	1,448	,089	-,37	10,37
K - (21)	K+ (21)	6,667*	1,448	,005	1,30	12,04
	P1 (21)	,333	1,448	1,000	-5,04	5,70
	P2 (21)	-,667	1,448	1,000	-6,04	4,70
	K - (3)	-1,000	1,448	1,000	-6,37	4,37
	K + (3)	2,667	1,448	,883	-2,70	8,04
	P1 (3)	,333	1,448	1,000	-5,04	5,70
	P2 (3)	-,333	1,448	1,000	-5,70	5,04
	K - (7)	,000	1,448	1,000	-5,37	5,37
	K + (7)	4,667	1,448	,146	-,70	10,04
	P1 (7)	-1,333	1,448	1,000	-6,70	4,04
	P2 (7)	-3,000	1,448	,769	-8,37	2,37
	K - (14)	-,667	1,448	1,000	-6,04	4,70
	K + (14)	2,667	1,448	,883	-2,70	8,04

	P1 (14)	-3,000	1,448	,769	-8,37	2,37
	P2 (14)	-5,000	1,448	,089	-10,37	,37
	K+ (21)	1,667	1,448	,998	-3,70	7,04
	P1 (21)	-4,667	1,448	,146	-10,04	,70
	P2 (21)	-5,667*	1,448	,031	-11,04	-,30
	K - (3)	-2,667	1,448	,883	-8,04	2,70
	K + (3)	1,000	1,448	1,000	-4,37	6,37
	P1 (3)	-1,333	1,448	1,000	-6,70	4,04
	P2 (3)	-2,000	1,448	,988	-7,37	3,37
	K - (7)	-1,667	1,448	,998	-7,04	3,70
	K + (7)	3,000	1,448	,769	-2,37	8,37
	P1 (7)	-3,000	1,448	,769	-8,37	2,37
K+ (21)	P2 (7)	-4,667	1,448	,146	-10,04	,70
	K - (14)	-2,333	1,448	,954	-7,70	3,04
	K + (14)	1,000	1,448	1,000	-4,37	6,37
	P1 (14)	-4,667	1,448	,146	-10,04	,70
	P2 (14)	-6,667*	1,448	,005	-12,04	-1,30
	K - (21)	-1,667	1,448	,998	-7,04	3,70
	P1 (21)	-6,333*	1,448	,009	-11,70	-,96
	P2 (21)	-7,333*	1,448	,001	-12,70	-1,96
	K - (3)	3,667	1,448	,475	-1,70	9,04
	K + (3)	7,333*	1,448	,001	1,96	12,70
	P1 (3)	5,000	1,448	,089	-,37	10,37
	P2 (3)	4,333	1,448	,228	-1,04	9,70
	K - (7)	4,667	1,448	,146	-,70	10,04
	K + (7)	9,333*	1,448	,000	3,96	14,70
	P1 (7)	3,333	1,448	,625	-2,04	8,70
P1 (21)	P2 (7)	1,667	1,448	,998	-3,70	7,04
	K - (14)	4,000	1,448	,338	-1,37	9,37
	K + (14)	7,333*	1,448	,001	1,96	12,70
	P1 (14)	1,667	1,448	,998	-3,70	7,04
	P2 (14)	-,333	1,448	1,000	-5,70	5,04
	K - (21)	4,667	1,448	,146	-,70	10,04
	K+ (21)	6,333*	1,448	,009	,96	11,70
	P2 (21)	-1,000	1,448	1,000	-6,37	4,37
	K - (3)	4,667	1,448	,146	-,70	10,04
P2 (21)	K + (3)	8,333*	1,448	,000	2,96	13,70
	P1 (3)	6,000*	1,448	,017	,63	11,37
	P2 (3)	5,333	1,448	,053	-,04	10,70

K - (7)	5,667*	1,448	,031	,30	11,04
K + (7)	10,333*	1,448	,000	4,96	15,70
P1 (7)	4,333	1,448	,228	-1,04	9,70
P2 (7)	2,667	1,448	,883	-2,70	8,04
K - (14)	5,000	1,448	,089	-,37	10,37
K + (14)	8,333*	1,448	,000	2,96	13,70
P1 (14)	2,667	1,448	,883	-2,70	8,04
P2 (14)	,667	1,448	1,000	-4,70	6,04
K - (21)	5,667*	1,448	,031	,30	11,04
K+ (21)	7,333*	1,448	,001	1,96	12,70
P1 (21)	1,000	1,448	1,000	-4,37	6,37

*. The mean difference is significant at the 0.05 level.

Homogeneous Subsets

DSPP

Tukey HSD^a

KELOMPOK	N	Subset for alpha = 0.05				
		1	2	3	4	5
K + (7)	3	3,00				
K + (3)	3	5,00	5,00			
K + (14)	3	5,00	5,00			
K+ (21)	3	6,00	6,00	6,00		
P1 (3)	3	7,33	7,33	7,33	7,33	
K - (7)	3	7,67	7,67	7,67	7,67	
K - (21)	3	7,67	7,67	7,67	7,67	
P2 (3)	3	8,00	8,00	8,00	8,00	8,00
K - (14)	3	8,33	8,33	8,33	8,33	8,33
K - (3)	3		8,67	8,67	8,67	8,67
P1 (7)	3		9,00	9,00	9,00	9,00
P2 (7)	3			10,67	10,67	10,67
P1 (14)	3			10,67	10,67	10,67
P1 (21)	3				12,33	12,33
P2 (14)	3				12,67	12,67
P2 (21)	3					13,33
Sig.		,053	,338	,146	,053	,053

Means for groups in homogeneous subsets are displayed.

a. Uses Harmonic Mean Sample Size = 3,000.

```

* Chart Builder.
GGRAPH
  /GRAPHDATASET NAME="graphdataset" VARIABLES=KELOMPOK
MEANS(DSPP, 1)[name="MEAN_DSPP" LOW="MEAN_DSPP_LOW"
HIGH="MEAN_DSPP_HIGH"] MISSING=LISTWISE REPORTMISSING=NO
  /GRAPHSPEC SOURCE=INLINE.
BEGIN GPL
  SOURCE: s=userSource(id("graphdataset"))
  DATA: KELOMPOK=col(source(s), name("KELOMPOK"), unit.category())
  DATA: MEAN_DSPP=col(source(s), name("MEAN_DSPP"))
  DATA: LOW=col(source(s), name("MEAN_DSPP_LOW"))
  DATA: HIGH=col(source(s), name("MEAN_DSPP_HIGH"))
  GUIDE: axis(dim(1), label("KELOMPOK"))
  GUIDE: axis(dim(2), label("Mean DSPP"))
  GUIDE: text.footnote(label("Error Bars: +/- 1 SD"))
  SCALE: cat(dim(1), include("1", "2", "3", "4", "5", "6", "7",
"8", "9", "10", "11", "12"
, "13", "14", "15", "16"))
  SCALE: linear(dim(2), include(0))
  ELEMENT: interval(position(KELOMPOK*MEAN_DSPP),
shape.interior(shape.square))
  ELEMENT:
interval(position(region.spread.range(KELOMPOK*(LOW+HIGH))),
shape.interior(shape.ibeam))
END GPL.

```

GGraph

Notes

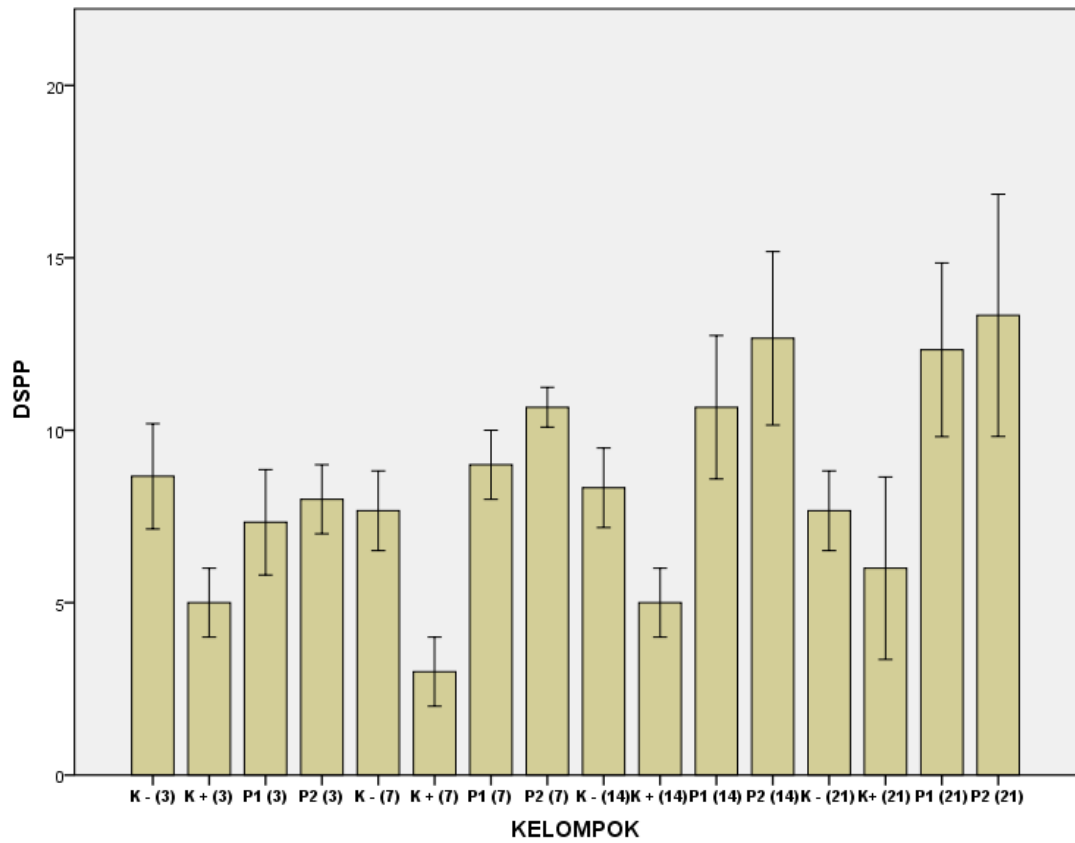
Output Created	15-JUN-2022 13:34:54
Comments	
Input	
Data	C:\Users\Panasonic\Documents\DATA
Active Dataset	RAHMI.sav
Filter	DataSet0
Weight	<none>
Split File	<none>
N of Rows in Working Data File	<none>
	48

Syntax

```
GGRAPH
  /GRAPHDATASET
NAME="graphdataset"
VARIABLES=KELOMPOK
MEANSD(DSPP,
1)[name="MEAN_DSPP"
LOW="MEAN_DSPP_LOW"
HIGH="MEAN_DSPP_HIGH"]
MISSING=LISTWISE
REPORTMISSING=NO
  /GRAPHSPEC SOURCE=INLINE.
BEGIN GPL
SOURCE:
s=userSource(id("graphdataset"))
DATA: KELOMPOK=col(source(s),
name("KELOMPOK"), unit.category())
DATA: MEAN_DSPP=col(source(s),
name("MEAN_DSPP"))
DATA: LOW=col(source(s),
name("MEAN_DSPP_LOW"))
DATA: HIGH=col(source(s),
name("MEAN_DSPP_HIGH"))
GUIDE: axis(dim(1),
label("KELOMPOK"))
GUIDE: axis(dim(2), label("Mean
DSPP"))
GUIDE: text.footnote(label("Error Bars:
+/- 1 SD"))
SCALE: cat(dim(1), include("1", "2", "3",
"4", "5", "6", "7", "8", "9", "10", "11", "12"
, "13", "14", "15", "16"))
SCALE: linear(dim(2), include(0))
ELEMENT:
interval(position(KELOMPOK*MEAN_DS
PP), shape.interior(shape.square))
ELEMENT:
interval(position(region.spread.range(KE
LOMPOK*(LOW+HIGH))),
shape.interior(shape.ibeam))
END GPL.
```

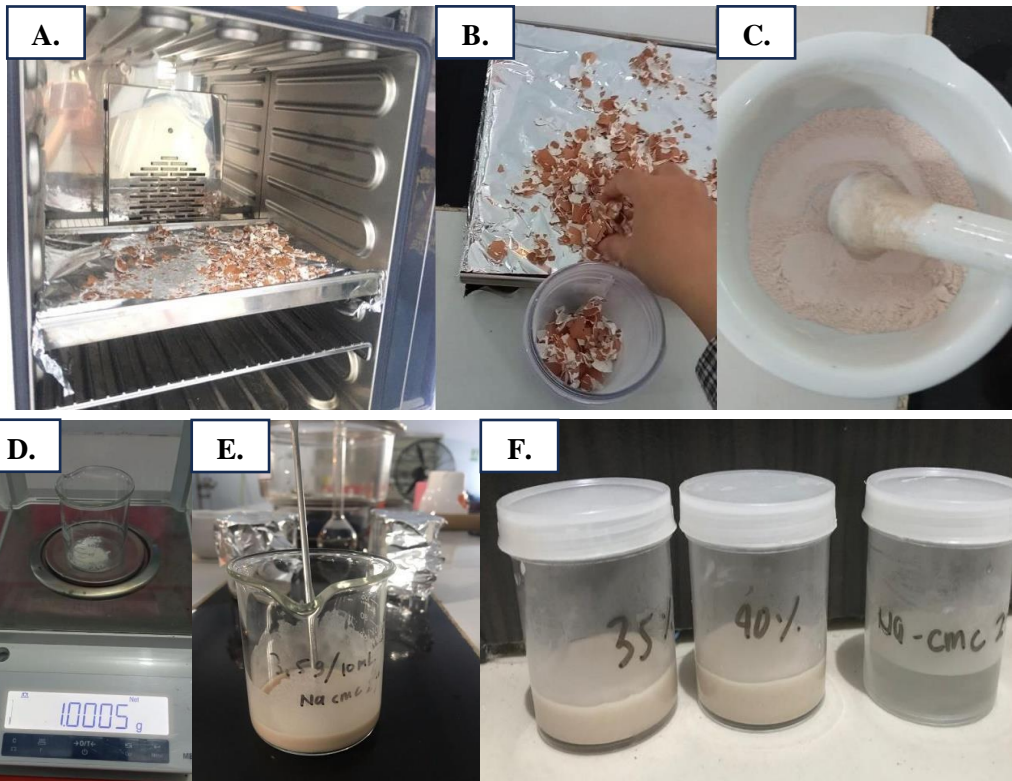

Resources	Processor Time	00:00:00,36
	Elapsed Time	00:00:00,34

[DataSet0] C:\Users\Panasonic\Documents\DATA RAHMI.sav



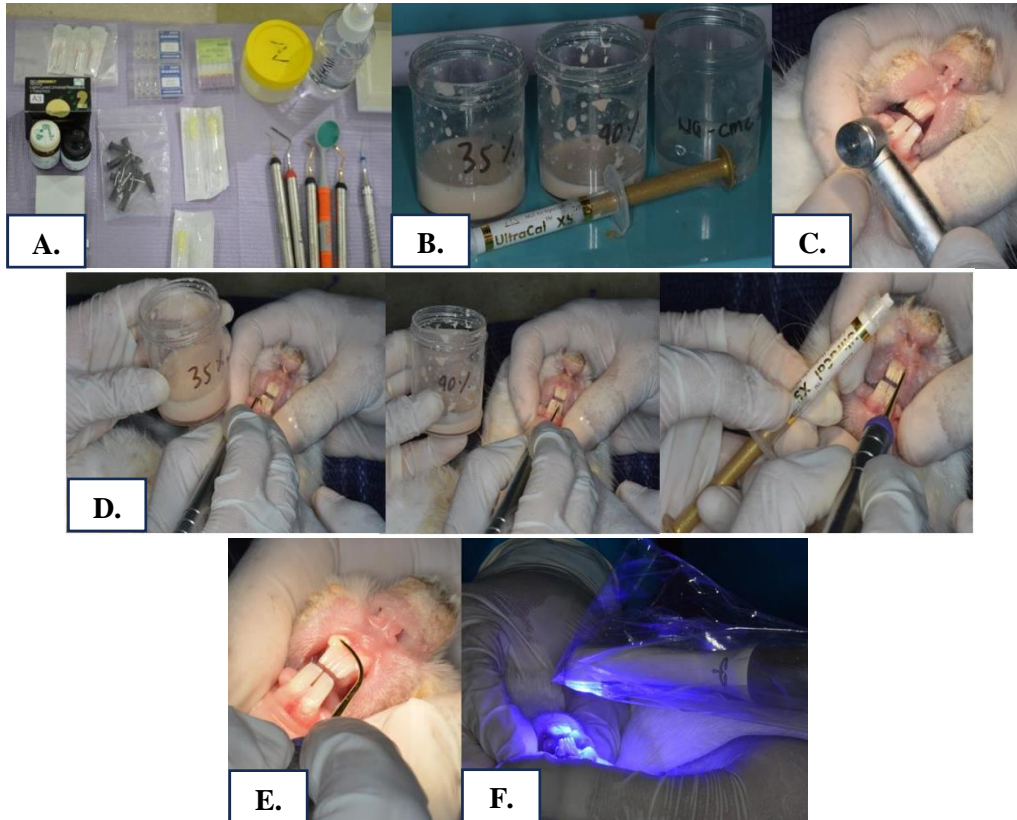
C. Dokumentasi Penelitian

Tahap Pembuatan Sediaan Pasta Cangkang



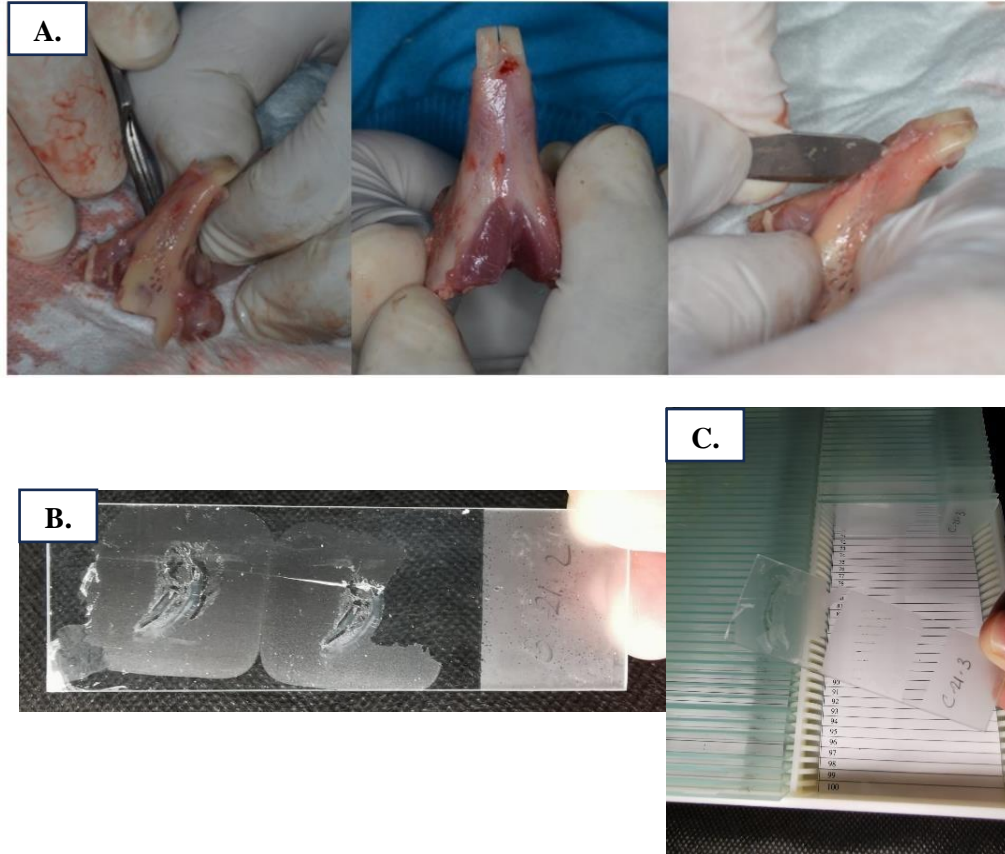
- A. Proses kalsinasi cangkang telur pada suhu 110°C selama 12 jam
- B. Proses penghancuran cangkang telur dengan *blender*
- C. Proses penghalusan dengan menggunakan mortar
- D. Proses menimbang jumlah cangkang telur disesuaikan dengan konsentrasi yang diinginkan
- E. Penambahan larutan Na CMC (*Carboxy Methyl Cellulosum Natricum*)
- F. Sediaan pasta cangkang telur 35% dan 40%

Tahap Perlakuan Hewan Coba



- A. Persiapan alat dan bahan
- B. Bahan yang akan diaplikasikan sebagai K-, K+, P35 dan P40
- C. Pembuatan kavitas pada gigi kelinci menggunakan bur dengan *high speed*
- D. Pengaplikasian bahan coba
- E. Menutup kavitas dengan RMGIC
- F. Proses *light cure* RMGIC

Proses Persiapan untuk Pemeriksaan Imunohistokimia Pasca Perlakuan



- A. Proses pengambilan rahang dan pemisahan gigi
- B. Proses pembuatan *slide* preparat
- C. Sediaan *slide* preparat setiap sampel