

## Daftar Pustaka

- Bastian. 2016. Identifikasi Karakter Beberapa Varietas Cabai (*Capsicum Annuum L.*) Introduksi di Rumah Kaca. Universitas Lampung: Lampung.
- Cerkauskas, R. 2004. Pepper Diseases. Chilli Veinal Mottle Virus, Aphid-Transmitted Potyvirus. Found in many Asian countries. AVRDC-The World Vegetable Center, Shanhua, Taiwan.
- Da Costa, J.G., Pires E.V., Birkett M.A., Bleicher, E. 2011. Differential preference of *Capsicum* spp. Cultivars by *Aphis gossypii* conferred by variation in volatile semiochemistry. *Euphytica*. 177:299-307)
- Daryanto. A. 2016. Analisis Genetik dan Pewarisan Sifat Ketahanan Cabai Terhadap Infestasi Kutudaun Melon, *Aphis gossypii* Glover (Hemiptera: Aphididae). Sekolah Pascasarjana Institut Pertanian Bogor.
- DuriatAS. 2009. Pengendalian Penyakit Kuning Keriting pada Tanaman Cabai Kecil. Balai Penelitian Tanaman Sayuran. Jl. Tangkuban Parahu 517Lembang, Bandung, (5). Hlm 43-45.
- Fauzana H., S. Syafei, A. Hasyim dan M. Kasim, 2002. Pengaruh Ketinggian Tempat dan Musim Terhadap Fluktuasi Aphid pada Tanaman Kentang. Sagu. Vol. 1 No. 1:13-18. Universitas Riau: Pekanbaru.
- Heddy, S., & Kurniati. 1996. *Prinsip-Prinsip Dasar Ekologi Suatu Bhasan Tentang Kaidah Ekologi dan Penerapannya*. Jakarta: PT. Raja Grafindo Persada. Jakarta.
- Irsan. C. 2008. Studi Keberadaan Hiperparasitoid dalam Mempengaruhi Perilaku Imago Parasitoid pada Kutudaun (Homoptera: Aphididae). Seminar Nasional V. Pemberdayaan Keanekaragaman Serangga untuk Meningkatkan Kesejahteraan Masyarakat, Bogor 18-20 Maret 2008. V Pinem.
- Jumar. 2000. Entomologi Serangga. PT. Rineka Cipta, Jakarta.
- Kennedy, JS, & Stroyan, HLG, 1959. Biology Of Aphids. Annu Rev Entomol 4: 139-160.hlm
- Khuluk, M., Phabiola, T.A., Wijaya, I.N. 2020. Penularan Virus Bergejala Mosaik Pada Tanaman Melon (*Cucumis melo L.*) Secara Mekanis dan Melalui Vektor Kutudaun. *Jurnal Agroteknologi Tropika*, (9)01:76-86.
- Marwoto. 2007. Dukungan pengendalian Hama Terpadu dalam program Bangkit Kedelai. *Iptek Tanaman pangan* 2(7):79-92.
- Nurfalach DR. 2010. Budidaya tanaman cabai merah (*Capsicum annuum L.*) di UPTD Perbibitan Tanaman Hortikultura Pakopen Kecamatan Bandungan Kabupaten Semarang. Tugas Akhir. Fakultas Pertanian Universitas Sebelas Maret, Surakarta.
- Nurjannati, K. 2017. Efek Perlakuan Priming terhadap Performa Tanaman Cabai (*Capsicum annuum L.*) pada Kondisi Stres Air. Fakultas Matematika dan Ilmu Pengetahuan Alam Universitas Negeri Yogyakarta. Yogyakarta.

- Rachman.N. 2015. Keefektifan Fosfin Formulasi Cair terhadap *Aphis Gossypii Glover* dan *Macrosiphoniella Sanborni* Gillette (Hemiptera: Aphididae) Pada Bunga Potong Krisan. IPB: Bogor.
- Rahayu, S. 2017. Pertumbuhan dan Produksi Beberapa Varietas Cabai Besar (*Capsicum annum* L.) pada Berbagai Dosis Npk. Fakultas Pertanian. Universitas Hasanuddin Makassar.
- Rice ME, O'Neal M. 2008. Soybean aphid management field guide. Iowa State University of Science and Technology, Iowa Soybean Association.
- Soelaiman, V., Ernawati, A. 2013. Pertumbuhan dan perkembangan cabai keriting (*Capsicum annum* l.) secara in vitro pada beberapa konsentrasi BAP dan IAA. Bul.Aghorti Vol. 1 (1) : 62-66
- Vos, J.G.M. 1994. Pengelolaan Tanaman Terpadu pada Cabai (*Capsicum* spp) di Dataran Rendah Tropis (Terjemahan oleh Ch. Lilies S. dan E. van de Fliert.Bentang).
- Wahyudi. E. 2017. Pertumbuhan dan produksi cabai keriting (*Capsicum annum* L.) pada berbagai dosis mikoriza arbuskular dan konsentrasi pupuk organik cair. Fakultas Perntanian Universitas Hasanuddin. Makassar.
- Yuliani, D dan Rohaeni, R. 2017. Heritabilitas Sumber Gen, dan Durabilitas Ketahanan Varietas Padi Terhadap Penyakit Hawar Daun Bakteri. *Jurnal Litbang Pertanian*, (36)2:99-108.
- Yuliani, Hidayat P dan Sartiani D. 2006. Identifikasi Kutukebul dari beberapa tanaman inang dan perkembangan populasinya. *Jurnal Entomologi*. Vol 3 (2): 41-49

## Lampiran

### Lampiran 2. Rekapitulasi hasil pengamatan populasi telur *B. Tabaci* 6 MST

Varietas	Ulangan			Total	Rata-rata
	I	II	III		
Horison	3.25	0.5	4	7.75	2.58
Batalion	1.75	0	0.25	2	0.67
Panex 100 F1	3.25	0.25	0	3.5	1.17
Kastilo	3	0.25	2.5	5.75	1.92
Ferosa	0.75	0	1	1.75	0.58
PM 999 F1	1.25	2	4	7.25	2.42
Dewata 43 F1	3.75	0.25	2.5	6.5	2.17
Bhaskara	2	1.25	2.75	6	2.00
Bara	11	0.25	2.75	14	4.67

**Tabel Lampiran 1.** Tabel ANOVA pengamatan populasi telur *B. Tabaci* 6 MST

#### Analysis of Variance

Source	DF	Adj SS	Adj MS	F-Value	P-Value
Varietas	8	36.41	4.551	1.24	0.340
Ulangan	2	35.84	17.919	4.87	0.022
Error	16	58.87	3.679		
Total	26	131.12			

### Lampiran 2. Rekapitulasi hasil pengamatan populasi telur *B. Tabaci* 7 MST

Varietas	Ulangan			Total	Rata-rata
	I	II	III		
Horison	3	3	2.25	8.25	2.75
Batalion	3	3.75	3.75	10.5	3.50
Panex 100 F1	2.75	0.75	4.25	7.75	2.58
Kastilo	4.5	0.75	3.5	8.75	2.92
Ferosa	3.25	3.5	5	11.75	3.92
PM 999 F1	2.25	2.75	0	5	1.67
Dewata 43 F1	6	1.75	5.25	13	4.33
Bhaskara	0.75	3	3	6.75	2.25
Bara	6	1	7	14	4.67

**Tabel Lampiran 2.** Tabel ANOVA pengamatan populasi telur *B. Tabaci* 7 MST

#### Analysis of Variance

Source	DF	Adj SS	Adj MS	F-Value	P-Value
Varietas	8	23.85	2.981	1.11	0.406
Ulangan	2	11.92	5.961	2.22	0.141
Error	16	42.95	2.685		
Total	26	78.73			

**Lampiran 3.** Rekapitulasi hasil pengamatan populasi telur *B. Tabaci* 8 MST

Varietas	Ulangan			Total	Rata-rata
	I	II	III		
Horison	9.75	6	15.25	31	10.33
Batalion	2	6.5	18.75	27.25	9.08
Panex 100 F1	12.25	3.75	15	31	10.33
Kastilo	7	8	17.25	32.25	10.75
Ferosa	7.25	9.5	5.75	22.5	7.50
PM 999 F1	5	6.5	10	21.5	7.17
Dewata 43 F1	7	9.75	10.75	27.5	9.17
Bhaskara	6	10.25	12.25	28.5	9.50
Bara	11.5	14	21.25	46.75	15.58

**Tabel Lampiran 3.** Tabel ANOVA pengamatan populasi telur *B. Tabaci* 8 MST

#### Analysis of Variance

Source	DF	Adj SS	Adj MS	F-Value	P-Value
Varietas	8	143.9	17.99	1.46	0.247
Ulangan	2	228.5	114.23	9.26	0.002
Error	16	197.3	12.33		
Total	26	569.7			

**Lampiran 4.** Rekapitulasi hasil pengamatan populasi telur *B. Tabaci* 9 MST

Varietas	Ulangan			Total	Rata-rata
	I	II	III		
Horison	15.75	12.75	18.5	47	15.67
Batalion	19	12.75	14	45.75	15.25
Panex 100 F1	13.25	11.75	19.25	44.25	14.75
Kastilo	11.5	22.75	19.5	53.75	17.92
Ferosa	11.25	15.25	10.25	36.75	12.25
PM 999 F1	18.25	21.75	4.25	44.25	14.75
Dewata 43 F1	21.75	9.75	6	37.5	12.50
Bhaskara	16.25	13.5	10.5	40.25	13.42
Bara	14.75	17	9.25	41	13.67

**Tabel Lampiran 4.** Tabel ANOVA pengamatan populasi telur *B. Tabaci* 9 MST

#### Analysis of Variance

Source	DF	Adj SS	Adj MS	F-Value	P-Value
Varietas	8	73.92	9.240	0.33	0.942
Ulangan	2	59.20	29.600	1.06	0.370
Error	16	446.97	27.935		
Total	26	580.09			

**Lampiran 5.** Rekapitulasi hasil pengamatan populasi telur *B. Tabaci* 10 MST

Varietas	Ulangan			Total	Rata-rata
	I	II	III		
Horison	10.75	15.25	10	36	12.00
Batalion	19.75	13.5	11.25	44.5	14.83
Panex 100 F1	16	13.25	18.25	47.5	15.83
Kastilo	15	8.5	8.75	32.25	10.75
Ferosa	15.75	16.5	16	48.25	16.08
PM 999 F1	10.5	10.5	26	47	15.67
Dewata 43 F1	12.75	18	12.25	43	14.33
Bhaskara	12.5	21.5	10.5	44.5	14.83
Bara	11	17.5	17.75	46.25	15.42

**Tabel Lampiran 5.** Tabel ANOVA pengamatan populasi telur *B. Tabaci* 10 MST

**Analysis of Variance**

Source	DF	Adj SS	Adj MS	F-Value	P-Value
Varietas	8	80.958	10.120	0.44	0.879
Ulangan	2	6.292	3.146	0.14	0.873
Error	16	367.000	22.938		
Total	26	454.250			

**Lampiran 6.** Rekapitulasi hasil pengamatan populasi telur *B. Tabaci* 11 MST

Varietas	Ulangan			Total	Rata-rata
	I	II	III		
Horison	11.5	9.75	11.75	33	11.00
Batalion	10	7.5	11	28.5	9.50
Panex 100 F1	5.75	7	12	24.75	8.25
Kastilo	14	8.5	15.5	38	12.67
Ferosa	18.5	9.75	7.5	35.75	11.92
PM 999 F1	15.75	9	12.75	37.5	12.50
Dewata 43 F1	8.75	5.5	9.75	24	8.00
Bhaskara	13.75	11	7.75	32.5	10.83
Bara	5	11.5	11.75	28.25	9.42

**Tabel Lampiran 6.** Tabel ANOVA pengamatan populasi telur *B. Tabaci* 11 MST

**Analysis of Variance**

Source	DF	Adj SS	Adj MS	F-Value	P-Value
Varietas	8	73.59	9.198	0.87	0.562
Ulangan	2	36.03	18.016	1.70	0.214
Error	16	169.51	10.594		
Total	26	279.13			

**Lampiran 7** Rekapitulasi hasil pengamatan populasi telur *B. Tabaci* 12 MST

Varietas	Ulangan			Total	Rata-rata
	I	II	III		
Horison	13.5	9.75	11.5	34.75	11.58
Batalion	19.25	10	5.25	34.5	11.50
Panex 100 F1	11	14.5	13	38.5	12.83
Kastilo	19	14.25	12.25	45.5	15.17
Ferosa	15.25	18	16	49.25	16.42
PM 999 F1	15	14	9.25	38.25	12.75
Dewata 43 F1	13.75	23	15	51.75	17.25
Bhaskara	17.75	12.5	26.75	57	19.00
Bara	12.25	15.25	24.75	52.25	17.42

**Tabel Lampiran 7.** Tabel ANOVA pengamatan populasi telur *B. Tabaci* 12 MST

**Analysis of Variance**

Source	DF	Adj SS	Adj MS	F-Value	P-Value
Varietas	8	187.463	23.4329	0.94	0.512
Ulangan	2	1.685	0.8426	0.03	0.967
Error	16	399.273	24.9546		
Total	26	588.421			

**Lampiran 8.** Rekapitulasi hasil pengamatan populasi telur *B. Tabaci* 13 MST

Varietas	Ulangan			Total	Rata-rata
	I	II	III		
Horison	10	12.5	21.75	44.25	14.75
Batalion	16.25	12.75	11.5	40.5	13.50
Panex 100 F1	14.5	12.5	9.25	36.25	12.08
Kastilo	14.5	13	10.75	38.25	12.75
Ferosa	12.5	7.75	6.5	26.75	8.92
PM 999 F1	15.5	9	7	31.5	10.50
Dewata 43 F1	13.75	6.25	5.25	25.25	8.42
Bhaskara	4.75	18.25	5.25	28.25	9.42
Bara	17	11.75	9.25	38	12.67

**Tabel Lampiran 8.** Tabel ANOVA pengamatan populasi telur *B. Tabaci* 13 MST

**Analysis of Variance**

Source	DF	Adj SS	Adj MS	F-Value	P-Value
Varietas	8	117.96	14.74	0.78	0.628
Ulangan	2	57.88	28.94	1.53	0.247
Error	16	303.21	18.95		
Total	26	479.04			

**Lampiran 9.** Rekapitulasi hasil pengamatan populasi telur *B. Tabaci* 14 MST

Varietas	Ulangan			Total	Rata-rata
	I	II	III		
Horison	9.25	5.75	2.25	17.25	5.75
Batalion	4.75	13.25	12.25	30.25	10.08
Panex 100 F1	10.75	12	5.75	28.5	9.50
Kastilo	12.5	8.75	10.25	31.5	10.50
Ferosa	4.75	11.5	10.25	26.5	8.83
PM 999 F1	11.25	6.75	7	25	8.33
Dewata 43 F1	8.75	4.25	5	18	6.00
Bhaskara	7	3.5	9	19.5	6.50
Bara	6.25	7.5	10.5	24.25	8.08

**Tabel Lampiran 9.** Tabel ANOVA pengamatan populasi telur *B. Tabaci* 14 MST

**Analysis of Variance**

Source	DF	Adj SS	Adj MS	F-Value	P-Value
Varietas	8	74.060	9.2575	0.86	0.565
Ulangan	2	0.519	0.2593	0.02	0.976
Error	16	171.398	10.7124		
Total	26	245.977			

**Lampiran 10.** Rekapitulasi hasil pengamatan populasi telur *B. Tabaci* 15 MST

Varietas	Ulangan			Total	Rata-rata
	I	II	III		
Horison	4.5	2	5.75	12.25	4.08
Batalion	14.75	7.75	9	31.5	10.50
Panex 100 F1	5.75	7.5	8.5	21.75	7.25
Kastilo	9.25	9.25	4.25	22.75	7.58
Ferosa	3.5	9.5	8.25	21.25	7.08
PM 999 F1	5.75	6.5	4.5	16.75	5.58
Dewata 43 F1	2.25	5	10	17.25	5.75
Bhaskara	6.25	12.5	9.75	28.5	9.50
Bara	2.5	7	6.75	16.25	5.42

**Tabel Lampiran 10.** Tabel ANOVA pengamatan populasi telur *B. Tabaci* 15 MST

**Analysis of Variance**

Source	DF	Adj SS	Adj MS	F-Value	P-Value
Varietas	8	100.46	12.557	1.55	0.217
Ulangan	2	11.35	5.674	0.70	0.511
Error	16	129.74	8.109		
Total	26	241.54			

**Lampiran 11.** Rekapitulasi hasil pengamatan populasi nimfa *B. Tabaci* 6 MST

Varietas	Ulangan			Total	Rata-rata
	I	II	III		
Horison	2.75	0	2	4.75	1.58
Batalion	4.25	0	1	5.25	1.75
Panex 100 F1	0	0.75	2.25	3	1.00
Kastilo	0.5	0.25	1	1.75	0.58
Ferosa	0.75	0.5	2.75	4	1.33
PM 999 F1	10.25	25.5	0.5	36.25	12.08
Dewata 43 F1	4	0.75	0.75	5.5	1.83
Bhaskara	1.25	2.25	3	6.5	2.17
Bara	9	1.5	2	12.5	4.17

**Tabel Lampiran 11.** Tabel ANOVA pengamatan populasi nimfa *B. Tabaci* 6 MST

**Analysis of Variance**

Source	DF	Adj SS	Adj MS	F-Value	P-Value
Varietas	8	306.25	38.28	1.70	0.174
Ulangan	2	21.18	10.59	0.47	0.633
Error	16	359.99	22.50		
Total	26	687.42			

**Lampiran 12.** Rekapitulasi hasil pengamatan populasi nimfa *B. Tabaci* 7 MST

Varietas	Ulangan			Total	Rata-rata
	I	II	III		
Horison	4.5	0.5	0.75	5.75	1.92
Batalion	2.5	2.5	5.75	10.75	3.58
Panex 100 F1	1	1.25	6	8.25	2.75
Kastilo	0.25	2.75	1.5	4.5	1.50
Ferosa	1.25	0.75	3.75	5.75	1.92
PM 999 F1	7.5	2.5	1.5	11.5	3.83
Dewata 43 F1	9.75	2.25	4.75	16.75	5.58
Bhaskara	5	0.25	6	11.25	3.75
Bara	5.5	1	4	10.5	3.50

**Tabel Lampiran 12.** Tabel ANOVA pengamatan populasi nimfa *B. Tabaci* 7 MST

**Analysis of Variance**

Source	DF	Adj SS	Adj MS	F-Value	P-Value
Varietas	8	38.95	4.869	0.92	0.524
Ulangan	2	36.03	18.016	3.41	0.058
Error	16	84.43	5.277		
Total	26	159.41			



**Lampiran 13.** Rekapitulasi hasil pengamatan populasi nimfa *B. Tabaci* 8 MST

Varietas	Ulangan			Total	Rata-rata
	I	II	III		
Horison	13.5	14.25	22.25	50	16.67
Batalion	13.25	13.5	23	49.75	16.58
Panex 100 F1	5.5	17.25	32	54.75	18.25
Kastilo	10.5	16.5	35	62	20.67
Ferosa	9.5	12.75	20.5	42.75	14.25
PM 999 F1	11	16.5	20.75	48.25	16.08
Dewata 43 F1	11.5	15.75	26	53.25	17.75
Bhaskara	16.25	17.25	28.75	62.25	20.75
Bara	11.5	12	11.75	35.25	11.75

**Tabel Lampiran 13.** Tabel ANOVA pengamatan populasi nimfa *B. Tabaci* 8 MST**Analysis of Variance**

Source	DF	Adj SS	Adj MS	F-Value	P-Value
Varietas	8	197.6	24.70	1.35	0.288
Ulangan	2	815.2	407.59	22.34	0.000
Error	16	291.9	18.24		
Total	26	1304.7			

**Lampiran 14.** Rekapitulasi hasil pengamatan populasi nimfa *B. Tabaci* 9 MST

Varietas	Ulangan			Total	Rata-rata
	I	II	III		
Horison	28.5	21.25	23.5	73.25	24.42
Batalion	30.25	24.5	19.5	74.25	24.75
Panex 100 F1	5.5	29	22.75	57.25	19.08
Kastilo	28	22.5	25	75.5	25.17
Ferosa	14	23.5	19	56.5	18.83
PM 999 F1	29.5	24.25	5.5	59.25	19.75
Dewata 43 F1	19.25	13.5	10.75	43.5	14.50
Bhaskara	24.25	13.5	14.25	52	17.33
Bara	20.5	26	4.75	51.25	17.08

**Tabel Lampiran 14.** Tabel ANOVA pengamatan populasi nimfa *B. Tabaci* 9 MST**Analysis of Variance**

Source	DF	Adj SS	Adj MS	F-Value	P-Value
Varietas	8	350.4	43.80	0.78	0.626
Ulangan	2	215.2	107.59	1.92	0.179
Error	16	898.2	56.14		
Total	26	1463.8			

**Lampiran 15.** Rekapitulasi hasil pengamatan populasi nimfa *B. Tabaci* 10 MST

Varietas	Ulangan			Total	Rata-rata
	I	II	III		
Horison	17.5	10.5	14	42	14.00
Batalion	10.25	8	20.5	38.75	12.92
Panex 100 F1	4.5	13.5	20	38	12.67
Kastilo	15.75	13.75	9.25	38.75	12.92
Ferosa	16.5	16.5	12.5	45.5	15.17
PM 999 F1	15.75	16.25	20.25	52.25	17.42
Dewata 43 F1	8.25	13.75	12.75	34.75	11.58
Bhaskara	8.5	11.75	14.75	35	11.67
Bara	11.25	9.75	10.25	31.25	10.42

**Tabel Lampiran 15.** Tabel ANOVA pengamatan populasi nimfa *B. Tabaci* 10 MST  
**Analysis of Variance**

Source	DF	Adj SS	Adj MS	F-Value	P-Value
Varietas	8	106.33	13.29	0.77	0.633
Ulangan	2	41.72	20.86	1.21	0.324
Error	16	275.61	17.23		
Total	26	423.67			

**Lampiran 16.** Rekapitulasi hasil pengamatan populasi nimfa *B. Tabaci* 11 MST

Varietas	Ulangan			Total	Rata-rata
	I	II	III		
Horison	12.75	14	11.75	38.5	12.83
Batalion	14	14.75	7.5	36.25	12.08
Panex 100 F1	4.5	19.75	12.75	37	12.33
Kastilo	8.5	17.25	11.5	37.25	12.42
Ferosa	12	23.75	13.25	49	16.33
PM 999 F1	11.25	9.75	13.5	34.5	11.50
Dewata 43 F1	19.25	19.5	15.25	54	18.00
Bhaskara	8.25	13.5	15	36.75	12.25
Bara	9.5	5.75	11.75	27	9.00

**Tabel Lampiran 16.** Tabel ANOVA pengamatan populasi nimfa *B. Tabaci* 11 MST  
**Analysis of Variance**

Source	DF	Adj SS	Adj MS	F-Value	P-Value
Varietas	8	169.71	21.21	1.35	0.291
Ulangan	2	83.60	41.80	2.65	0.101
Error	16	252.11	15.76		
Total	26	505.42			

**Lampiran 17.** Rekapitulasi hasil pengamatan populasi nimfa *B. Tabaci* 12 MST

Varietas	Ulangan			Total	Rata-rata
	I	II	III		
Horison	15.5	10.75	15.75	42	14.00
Batalion	10.5	11.75	17.75	40	13.33
Panex 100 F1	5.75	6.5	19.25	31.5	10.50
Kastilo	17.5	16.75	25.5	59.75	19.92
Ferosa	16	23.25	16.25	55.5	18.50
PM 999 F1	12.5	26.25	13.5	52.25	17.42
Dewata 43 F1	13.5	19.5	19.5	52.5	17.50
Bhaskara	13.25	11.5	14.25	39	13.00
Bara	19.5	25	34.75	79.25	26.42

**Tabel Lampiran 17.** Tabel ANOVA pengamatan populasi nimfa *B. Tabaci* 12 MST**Analysis of Variance**

Source	DF	Adj SS	Adj MS	F-Value	P-Value
Varietas	8	539.7	67.46	3.05	0.027
Ulangan	2	153.2	76.60	3.47	0.056
Error	16	353.5	22.09		
Total	26	1046.4			

**Lampiran 18.** Rekapitulasi hasil pengamatan populasi nimfa *B. Tabaci* 13 MST

Varietas	Ulangan			Total	Rata-rata
	I	II	III		
Horison	12.75	17.5	14.25	44.5	14.83
Batalion	18	10.25	14	42.25	14.08
Panex 100 F1	9.25	19.25	13.5	42	14.00
Kastilo	20.75	10.25	9	40	13.33
Ferosa	16.25	11.75	8	36	12.00
PM 999 F1	8.75	10	6.5	25.25	8.42
Dewata 43 F1	12.5	17	4.75	34.25	11.42
Bhaskara	7.5	16.75	2	26.25	8.75
Bara	15	12.75	8	35.75	11.92

**Tabel Lampiran 18.** Tabel ANOVA pengamatan populasi nimfa *B. Tabaci* 13 MST**Analysis of Variance**

Source	DF	Adj SS	Adj MS	F-Value	P-Value
Varietas	8	125.5	15.69	0.86	0.564
Ulangan	2	139.0	69.51	3.83	0.044
Error	16	290.4	18.15		
Total	26	554.9			

**Lampiran 19.** Rekapitulasi hasil pengamatan populasi nimfa *B. Tabaci* 14 MST

Varietas	Ulangan			Total	Rata-rata
	I	II	III		
Horison	8.5	7.5	9	25	8.33
Batalion	8.75	3.75	7	19.5	6.50
Panex 100 F1	-2.25	5.75	5.75	9.25	3.08
Kastilo	5	4.25	6.25	15.5	5.17
Ferosa	10	2.75	9.75	22.5	7.50
PM 999 F1	3.75	10.75	12.25	26.75	8.92
Dewata 43 F1	5	4.25	10.5	19.75	6.58
Bhaskara	10	7	7.25	24.25	8.08
Bara	5.5	11	6.75	23.25	7.75

**Tabel Lampiran 19.** Tabel ANOVA pengamatan populasi nimfa *B. Tabaci* 14 MST

**Analysis of Variance**

Source	DF	Adj SS	Adj MS	F-Value	P-Value
Varietas	8	79.30	9.912	1.04	0.447
Ulangan	2	26.81	13.405	1.41	0.274
Error	16	152.44	9.527		
Total	26	258.55			

**Lampiran 20.** Rekapitulasi hasil pengamatan populasi nimfa *B. Tabaci* 15 MST

Varietas	Ulangan			Total	Rata-rata
	I	II	III		
Horison	5.5	0	10.25	15.75	5.25
Batalion	2	4.75	10	16.75	5.58
Panex 100 F1	2.25	9.5	5.25	17	5.67
Kastilo	7.25	5.25	4.75	17.25	5.75
Ferosa	3	3	5.25	11.25	3.75
PM 999 F1	3.25	7.5	10.5	21.25	7.08
Dewata 43 F1	8.25	14.5	8.5	31.25	10.42
Bhaskara	5.5	9.25	7.75	22.5	7.50
Bara	7.25	16	9.75	33	11.00

**Tabel Lampiran 20.** Tabel ANOVA pengamatan populasi nimfa *B. Tabaci* 15 MST

**Analysis of Variance**

Source	DF	Adj SS	Adj MS	F-Value	P-Value
Varietas	8	140.38	17.55	1.70	0.176
Ulangan	2	52.79	26.40	2.55	0.109
Error	16	165.62	10.35		
Total	26	358.79			

**Lampiran 21.** Rekapitulasi hasil pengamatan populasi imago *B. Tabaci* 6 MST

Varietas	Ulangan			Total	Rata-rata
	I	II	III		
Horison	0	0.25	0.25	0.5	0.17
Batalion	0	0	0	0	0.00
Panex 100 F1	0	0	0	0	0.00
Kastilo	0	0	0	0	0.00
Ferosa	0	0.25	0	0.25	0.08
PM 999 F1	0	0.75	0	0.75	0.25
Dewata 43 F1	0.25	0.25	0	0.5	0.17
Bhaskara	0.5	0.25	0	0.75	0.25
Bara	0.25	0.5	0	0.75	0.25

**Tabel Lampiran 21.** Tabel ANOVA pengamatan populasi imago *B. Tabaci* 6 MST

**Analysis of Variance**

Source	DF	Adj SS	Adj MS	F-Value	P-Value
Varietas	8	0.2963	0.03704	1.13	0.394
Ulangan	2	0.2269	0.11343	3.47	0.056
Error	16	0.5231	0.03270		
Total	26	1.0463			

**Lampiran 22.** Rekapitulasi hasil pengamatan populasi imago *B. Tabaci* 7 MST

Varietas	Ulangan			Total	Rata-rata
	I	II	III		
Horison	0.25	0.5	0.5	1.25	0.42
Batalion	0	0	1	1	0.33
Panex 100 F1	0.5	0	0	0.5	0.17
Kastilo	0	0	0	0	0.00
Ferosa	0.25	0	1	1.25	0.42
PM 999 F1	0	0	0.5	0.5	0.17
Dewata 43 F1	0	0.25	0	0.25	0.08
Bhaskara	1	0.25	0.25	1.5	0.50
Bara	0	0.25	0	0.25	0.08

**Tabel Lampiran 22.** Tabel ANOVA pengamatan populasi imago *B. Tabaci* 7 MST

**Analysis of Variance**

Source	DF	Adj SS	Adj MS	F-Value	P-Value
Varietas	8	0.7685	0.09606	0.85	0.577
Ulangan	2	0.2269	0.11343	1.00	0.390
Error	16	1.8148	0.11343		
Total	26	2.8102			

**Lampiran 23.** Rekapitulasi hasil pengamatan populasi imago *B. Tabaci* 8 MST

Varietas	Ulangan			Total	Rata-rata
	I	II	III		
Horison	2	2	1.5	5.5	1.83
Batalion	1.5	2.75	1.75	6	2.00
Panex 100 F1	2.25	2.25	4	8.5	2.83
Kastilo	1.5	0.25	4.25	6	2.00
Ferosa	0.75	3	4.25	8	2.67
PM 999 F1	1	1.25	5.75	8	2.67
Dewata 43 F1	3.75	1.75	3.25	8.75	2.92
Bhaskara	1.75	2	1.25	5	1.67
Bara	3	2.75	2.75	8.5	2.83

**Tabel Lampiran 23.** Tabel ANOVA pengamatan populasi imago *B. Tabaci* 8 MST

**Analysis of Variance**

Source	DF	Adj SS	Adj MS	F-Value	P-Value
Varietas	8	8.375	1.047	0.63	0.743
Ulangan	2	7.875	3.938	2.36	0.126
Error	16	26.667	1.667		
Total	26	42.917			

**Lampiran 24.** Rekapitulasi hasil pengamatan populasi imago *B. Tabaci* 9 MST

Varietas	Ulangan			Total	Rata-rata
	I	II	III		
Horison	2	2	9	13	4.33
Batalion	2.25	3	7.75	13	4.33
Panex 100 F1	4	5.25	7.75	17	5.67
Kastilo	1.5	4	12.25	17.75	5.92
Ferosa	4.5	4.5	5	14	4.67
PM 999 F1	3	4.5	1.5	9	3.00
Dewata 43 F1	2.25	8.25	1.75	12.25	4.08
Bhaskara	3	11	3.5	17.5	5.83
Bara	2	14	4.25	20.25	6.75

**Tabel Lampiran 24.** Tabel ANOVA pengamatan populasi imago *B. Tabaci* 9 MST

**Analysis of Variance**

Source	DF	Adj SS	Adj MS	F-Value	P-Value
Varietas	8	38.00	4.751	0.38	0.916
Ulangan	2	75.09	37.544	3.00	0.078
Error	16	200.41	12.526		
Total	26	313.50			

**Lampiran 25.** Rekapitulasi hasil pengamatan populasi imago *B. Tabaci* 10 MST

Varietas	Ulangan			Total	Rata-rata
	I	II	III		
Horison	2.75	4.25	5	12	4.00
Batalion	3	5	3.5	11.5	3.83
Panex 100 F1	3.5	5.5	3.75	12.75	4.25
Kastilo	4	2.75	6.75	13.5	4.50
Ferosa	4	3.75	6.5	14.25	4.75
PM 999 F1	3.25	4.25	2.75	10.25	3.42
Dewata 43 F1	4.25	4.75	3.75	12.75	4.25
Bhaskara	2.5	4	5.75	12.25	4.08
Bara	2.5	4.25	4	10.75	3.58

**Tabel Lampiran 25.** Tabel ANOVA pengamatan populasi imago *B. Tabaci* 10 MST

**Analysis of Variance**

Source	DF	Adj SS	Adj MS	F-Value	P-Value
Varietas	8	4.602	0.5752	0.50	0.841
Ulangan	2	8.074	4.0370	3.49	0.055
Error	16	18.509	1.1568		
Total	26	31.185			

**Lampiran 26.** Rekapitulasi hasil pengamatan populasi imago *B. Tabaci* 11 MST

Varietas	Ulangan			Total	Rata-rata
	I	II	III		
Horison	5.75	4.5	2.25	12.5	4.17
Batalion	3	3.5	3.5	10	3.33
Panex 100 F1	5	4	2.5	11.5	3.83
Kastilo	3.75	4	2	9.75	3.25
Ferosa	5.75	5	3.5	14.25	4.75
PM 999 F1	4.25	0	3.5	7.75	2.58
Dewata 43 F1	3.25	0.5	1.75	5.5	1.83
Bhaskara	3.75	1	3.5	8.25	2.75
Bara	5	2.25	3.75	11	3.67

**Tabel Lampiran 26.** Tabel ANOVA pengamatan populasi imago *B. Tabaci* 11 MST

**Analysis of Variance**

Source	DF	Adj SS	Adj MS	F-Value	P-Value
Varietas	8	17.88	2.235	1.66	0.184
Ulangan	2	16.62	8.308	6.18	0.010
Error	16	21.51	1.344		
Total	26	56.00			

**Lampiran 27.** Rekapitulasi hasil pengamatan populasi imago *B. Tabaci* 12 MST

Varietas	Ulangan			Total	Rata-rata
	I	II	III		
Horison	3.5	6	5.75	15.25	5.08
Batalion	2	3	2.5	7.5	2.50
Panex 100 F1	4	2.25	5.25	11.5	3.83
Kastilo	4.25	2.75	7.5	14.5	4.83
Ferosa	4.25	5.75	2.75	12.75	4.25
PM 999 F1	3.5	6.25	3.5	13.25	4.42
Dewata 43 F1	6.25	5.5	5.25	17	5.67
Bhaskara	3.5	6.5	9	19	6.33
Bara	3.25	2.5	7.5	13.25	4.42

**Tabel Lampiran 27.** Tabel ANOVA pengamatan populasi imago *B. Tabaci* 12 MS

**Analysis of Variance**

Source	DF	Adj SS	Adj MS	F-Value	P-Value
Varietas	8	26.96	3.370	1.20	0.359
Ulangan	2	11.91	5.954	2.12	0.153
Error	16	45.01	2.813		
Total	26	83.88			

**Lampiran 28.** Rekapitulasi hasil pengamatan populasi imago *B. Tabaci* 13 MST

Varietas	Ulangan			Total	Rata-rata
	I	II	III		
Horison	7.5	2.5	6.75	16.75	5.58
Batalion	4.25	5	8.5	17.75	5.92
Panex 100 F1	5.25	4.5	10.75	20.5	6.83
Kastilo	5	5.5	2.75	13.25	4.42
Ferosa	5	4.25	5.75	15	5.00
PM 999 F1	7.25	6	6.25	19.5	6.50
Dewata 43 F1	1.5	4	3.5	9	3.00
Bhaskara	4.75	7.5	7.75	20	6.67
Bara	4.25	4.25	7.75	16.25	5.42

**Tabel Lampiran 28.** Tabel ANOVA pengamatan populasi imago *B. Tabaci* 13 MST

**Analysis of Variance**

Source	DF	Adj SS	Adj MS	F-Value	P-Value
Varietas	8	64.46	8.058	2.32	0.072
Ulangan	2	12.96	6.481	1.87	0.187
Error	16	55.54	3.471		
Total	26	132.96			



**Lampiran 29** Rekapitulasi hasil pengamatan populasi imago *B. Tabaci* 14 MST

Varietas	Ulangan			Total	Rata-rata
	I	II	III		
Horison	5	3	0	8	2.67
Batalion	3.75	4	2	9.75	3.25
Panex 100 F1	3	3.5	3.75	10.25	3.42
Kastilo	3.5	1.75	2.75	8	2.67
Ferosa	5.5	2.25	4.25	12	4.00
PM 999 F1	5.25	3.75	3	12	4.00
Dewata 43 F1	0.5	2.25	3.25	6	2.00
Bhaskara	2.25	0.25	4.75	7.25	2.42
Bara	4.25	3.5	0.5	8.25	2.75

**Tabel Lampiran 29.** Tabel ANOVA pengamatan populasi imago *B. Tabaci* 14 MST

**Analysis of Variance**

Source	DF	Adj SS	Adj MS	F-Value	P-Value
Varietas	8	11.792	1.474	0.57	0.787
Ulangan	2	5.514	2.757	1.07	0.367
Error	16	41.361	2.585		
Total	26	58.667			

**Lampiran 30.** Rekapitulasi hasil pengamatan populasi imago *B. Tabaci* 15 MST

Varietas	Ulangan			Total	Rata-rata
	I	II	III		
Horison	2.5	0	3.5	6	2.00
Batalion	4.5	2.5	2	9	3.00
Panex 100 F1	1.75	4.25	0.5	6.5	2.17
Kastilo	1.75	4.25	4.75	10.75	3.58
Ferosa	5.75	1.5	4.75	12	4.00
PM 999 F1	1.75	2.5	2.25	6.5	2.17
Dewata 43 F1	3.5	4.5	2.75	10.75	3.58
Bhaskara	5	5.75	4	14.75	4.92
Bara	5.75	6.75	7	19.5	6.50

**Tabel Lampiran 30.** Tabel ANOVA pengamatan populasi imago *B. Tabaci* 15 MST

**Analysis of Variance**

Source	DF	Adj SS	Adj MS	F-Value	P-Value
Varietas	8	51.9213	6.49016	2.84	0.036
Ulangan	2	0.0324	0.01620	0.01	0.993
Error	16	36.5509	2.28443		
Total	26	88.5046			

**Lampiran 31.** Rekapitulasi hasil pengamatan populasi nimfa *A. gossypii* 6 MST

Varietas	Ulangan			Total	Rata-rata
	I	II	III		
Horison	0	0	0	0	0.00
Batalion	0	0	1.75	1.75	0.58
Panex 100 F1	0	0	1	1	0.33
Kastilo	0	0	1.75	1.75	0.58
Ferosa	0	0	0.75	0.75	0.25
PM 999 F1	0.25	0.25	0.75	1.25	0.42
Dewata 43 F1	0.25	0	0.5	0.75	0.25
Bhaskara	0	0	0.5	0.5	0.17
Bara	0	1.75	1.75	3.5	1.17

**Tabel Lampiran 31.** Tabel ANOVA pengamatan populasi nimfa *A. gossypii* 6 MST  
**Analysis of Variance**

Source	DF	Adj SS	Adj MS	F-Value	P-Value
Varietas	8	2.750	0.3438	1.65	0.187
Ulangan	2	4.292	2.1458	10.30	0.001
Error	16	3.333	0.2083		
Total	26	10.375			

**Lampiran 32.** Rekapitulasi hasil pengamatan populasi nimfa *A. gossypii* 7 MST

Varietas	Ulangan			Total	Rata-rata
	I	II	III		
Horison	1	0.5	0	1.5	0.50
Batalion	0.75	0.75	1	2.5	0.83
Panex 100 F1	0.5	0	0.75	1.25	0.42
Kastilo	1	0.75	1.25	3	1.00
Ferosa	0	0	0.5	0.5	0.17
PM 999 F1	0.25	0	0.75	1	0.33
Dewata 43 F1	0	0.5	0.75	1.25	0.42
Bhaskara	0.25	0.5	1	1.75	0.58
Bara	0.5	1	0.5	2	0.67

**Tabel Lampiran 32.** Tabel ANOVA pengamatan populasi nimfa *A. gossypii* 7 MST  
**Analysis of Variance**

Source	DF	Adj SS	Adj MS	F-Value	P-Value
Varietas	8	1.5880	0.1985	1.82	0.147
Ulangan	2	0.4213	0.2106	1.93	0.177
Error	16	1.7454	0.1091		
Total	26	3.7546			

**Lampiran 33.** Rekapitulasi hasil pengamatan populasi nimfa *A. gossypii* 8 MST

Varietas	Ulangan			Total	Rata-rata
	I	II	III		
Horison	0.5	0.75	0.5	1.75	0.58
Batalion	1.25	3.25	1.75	6.25	2.08
Panex 100 F1	0.75	4.5	3	8.25	2.75
Kastilo	2.5	5.5	4	12	4.00
Ferosa	1	3.5	2.75	7.25	2.42
PM 999 F1	5	3	2.25	10.25	3.42
Dewata 43 F1	1.75	2.5	1.75	6	2.00
Bhaskara	2.5	1	1.5	5	1.67
Bara	6.5	1.75	4.75	13	4.33

**Tabel Lampiran 33.** Tabel ANOVA pengamatan populasi nimfa *A. gossypii* 8 MST

**Analysis of Variance**

Source	DF	Adj SS	Adj MS	F-Value	P-Value
Varietas	8	33.750	4.2188	2.03	0.108
Ulangan	2	1.056	0.5278	0.25	0.778
Error	16	33.194	2.0747		
Total	26	68.000			

**Lampiran 34.** Rekapitulasi hasil pengamatan populasi nimfa *A. gossypii* 9 MST

Varietas	Ulangan			Total	Rata-rata
	I	II	III		
Horison	4.5	3	12.75	20.25	6.75
Batalion	3.5	6.75	12	22.25	7.42
Panex 100 F1	2	5	7.5	14.5	4.83
Kastilo	3.25	9.25	9.25	21.75	7.25
Ferosa	3	7.75	15.5	26.25	8.75
PM 999 F1	7.75	4.5	21.25	33.5	11.17
Dewata 43 F1	1.75	6.75	17.5	26	8.67
Bhaskara	4.75	9.5	15.5	29.75	9.92
Bara	2	11	21.75	34.75	11.58

**Tabel Lampiran 34.** Tabel ANOVA pengamatan populasi nimfa *A. gossypii* 9 MST

**Analysis of Variance**

Source	DF	Adj SS	Adj MS	F-Value	P-Value
Varietas	8	113.9	14.23	1.40	0.270
Ulangan	2	588.6	294.29	28.88	0.000
Error	16	163.1	10.19		
Total	26	865.5			

**Lampiran 35.** Rekapitulasi hasil pengamatan populasi nimfa *A. gossypii* 10 MST

Varietas	Ulangan			Total	Rata-rata
	I	II	III		
Horison	12.75	10.5	12	35.25	11.75
Batalion	6.75	12.25	7.25	26.25	8.75
Panex 100 F1	8.25	12	7	27.25	9.08
Kastilo	15.5	7.25	11.5	34.25	11.42
Ferosa	12.5	10.25	3.5	26.25	8.75
PM 999 F1	14	5.75	8	27.75	9.25
Dewata 43 F1	12.75	9.5	7.5	29.75	9.92
Bhaskara	12.75	9.75	6	28.5	9.50
Bara	11	7.5	12.25	30.75	10.25

**Tabel Lampiran 35.** Tabel ANOVA pengamatan populasi nimfa *A. gossypii* 10 MST  
**Analysis of Variance**

Source	DF	Adj SS	Adj MS	F-Value	P-Value
Varietas	8	29.16	3.645	0.41	0.897
Ulangan	2	56.81	28.405	3.22	0.067
Error	16	141.19	8.824		
Total	26	227.16			

**Lampiran 36.** Rekapitulasi hasil pengamatan populasi nimfa *A. gossypii* 11 MST

Varietas	Ulangan			Total	Rata-rata
	I	II	III		
Horison	14	8	6.25	28.25	9.42
Batalion	13.5	14.25	12	39.75	13.25
Panex 100 F1	14.75	13.75	12.5	41	13.67
Kastilo	5.25	9.5	6.75	21.5	7.17
Ferosa	12.5	4.75	9.25	26.5	8.83
PM 999 F1	22.5	9.25	7.25	39	13.00
Dewata 43 F1	12	15	10.5	37.5	12.50
Bhaskara	6.5	10.25	9.25	26	8.67
Bara	9.25	10.25	8.75	28.25	9.42

**Tabel Lampiran 36.** Tabel ANOVA pengamatan populasi nimfa *A. gossypii* 11 MST  
**Analysis of Variance**

Source	DF	Adj SS	Adj MS	F-Value	P-Value
Varietas	8	141.64	17.71	1.48	0.240
Ulangan	2	42.92	21.46	1.79	0.198
Error	16	191.45	11.97		
Total	26	376.02			

**Lampiran 37.** Rekapitulasi hasil pengamatan populasi nimfa *A. gossypii* 12 MST

Varietas	Ulangan			Total	Rata-rata
	I	II	III		
Horison	16.75	10.25	14.75	41.75	13.92
Batalion	9.25	12	14.5	35.75	11.92
Panex 100 F1	12.5	9.5	8.75	30.75	10.25
Kastilo	5.5	10	4.75	20.25	6.75
Ferosa	6.75	7.75	14	28.5	9.50
PM 999 F1	15.25	17.25	21.5	54	18.00
Dewata 43 F1	6.75	13.75	13.75	34.25	11.42
Bhaskara	10.75	19	10.75	40.5	13.50
Bara	8.75	18	6.25	33	11.00

**Tabel Lampiran 37.** Tabel ANOVA pengamatan populasi nimfa *A. gossypii* 12 MST  
**Analysis of Variance**

Source	DF	Adj SS	Adj MS	F-Value	P-Value
Varietas	8	239.42	29.93	2.09	0.100
Ulangan	2	36.68	18.34	1.28	0.305
Error	16	229.19	14.32		
Total	26	505.29			

**Lampiran 38.** Rekapitulasi hasil pengamatan populasi nimfa *A. gossypii* 13 MST

Varietas	Ulangan			Total	Rata-rata
	I	II	III		
Horison	13.5	7	9.5	30	10.00
Batalion	12.5	9.75	15.75	38	12.67
Panex 100 F1	12.5	8	12.25	32.75	10.92
Kastilo	7.75	14.25	11	33	11.00
Ferosa	13	5.75	8.5	27.25	9.08
PM 999 F1	5.5	8.25	12.25	26	8.67
Dewata 43 F1	14.5	11.75	8.75	35	11.67
Bhaskara	10.75	10.25	8.75	29.75	9.92
Bara	9.25	5	3.75	18	6.00

**Tabel Lampiran 38.** Tabel ANOVA pengamatan populasi nimfa *A. gossypii* 13 MST  
**Analysis of Variance**

Source	DF	Adj SS	Adj MS	F-Value	P-Value
Varietas	8	91.06	11.383	1.32	0.302
Ulangan	2	20.64	10.322	1.20	0.328
Error	16	137.98	8.624		
Total	26	249.69			

**Lampiran 39.** Rekapitulasi hasil pengamatan populasi nimfa *A. gossypii* 14 MST

Varietas	Ulangan			Total	Rata-rata
	I	II	III		
Horison	8.5	4	4.25	16.75	5.58
Batalion	8.75	8.75	3.5	21	7.00
Panex 100 F1	5.25	4.5	3.5	13.25	4.42
Kastilo	8.25	11.5	5.75	25.5	8.50
Ferosa	7.25	9.5	3.75	20.5	6.83
PM 999 F1	7	5.25	6.25	18.5	6.17
Dewata 43 F1	5.75	4.75	5.5	16	5.33
Bhaskara	4.25	9.75	10.75	24.75	8.25
Bara	9.25	4.75	2.5	16.5	5.50

**Tabel Lampiran 39.** Tabel ANOVA pengamatan populasi nimfa *A. gossypii* 14 MST

**Analysis of Variance**

Source	DF	Adj SS	Adj MS	F-Value	P-Value
Varietas	8	44.95	5.619	0.97	0.493
Ulangan	2	23.46	11.731	2.02	0.165
Error	16	92.87	5.804		
Total	26	161.28			

**Lampiran 40.** Rekapitulasi hasil pengamatan populasi nimfa *A. gossypii* 15 MST

Varietas	Ulangan			Total	Rata-rata
	I	II	III		
Horison	2.75	0	3.75	6.5	2.17
Batalion	5.5	6.75	8	20.25	6.75
Panex 100 F1	3	7.5	3.75	14.25	4.75
Kastilo	8.75	6.5	4.5	19.75	6.58
Ferosa	6	3.25	9.25	18.5	6.17
PM 999 F1	1.75	10.5	5.25	17.5	5.83
Dewata 43 F1	4	4.25	5.25	13.5	4.50
Bhaskara	9.25	5	7.25	21.5	7.17
Bara	8	5	8.5	21.5	7.17

**Tabel Lampiran 40.** Tabel ANOVA pengamatan populasi nimfa *A. gossypii* 15 MST

**Analysis of Variance**

Source	DF	Adj SS	Adj MS	F-Value	P-Value
Varietas	8	63.727	7.966	1.25	0.334
Ulangan	2	3.255	1.627	0.26	0.778
Error	16	101.995	6.375		
Total	26	168.977			

**Lampiran 41.** Rekapitulasi hasil pengamatan populasi imago *A. gossypii* 6 MST

Varietas	Ulangan			Total	Rata-rata
	I	II	III		
Horison	0	0	0	0	0.00
Batalion	0	0	0	0	0.00
Panex 100 F1	0	0	0	0	0.00
Kastilo	0	0	0	0	0.00
Ferosa	0	0.25	0	0.25	0.08
PM 999 F1	0	0	0	0	0.00
Dewata 43 F1	0.25	0	0	0.25	0.08
Bhaskara	0	1.75	0	1.75	0.58
Bara	0	0	0	0	0.00

**Tabel Lampiran 41.** Tabel ANOVA pengamatan populasi imago *A. gossypii* 6 MST

**Analysis of Variance**

Source	DF	Adj SS	Adj MS	F-Value	P-Value
Varietas	8	0.8750	0.1094	0.94	0.512
Ulangan	2	0.2639	0.1319	1.13	0.346
Error	16	1.8611	0.1163		
Total	26	3.0000			

**Lampiran 42.** Rekapitulasi hasil pengamatan populasi imago *A. gossypii* 7 MST

Varietas	Ulangan			Total	Rata-rata
	I	II	III		
Horison	0.25	0	0	0.25	0.08
Batalion	0	0	0	0	0.00
Panex 100 F1	0	0	0	0	0.00
Kastilo	0	0	0	0	0.00
Ferosa	0	0	0	0	0.00
PM 999 F1	0	0.5	0	0.5	0.17
Dewata 43 F1	0	0.5	0	0.5	0.17
Bhaskara	0.25	1	0	1.25	0.42
Bara	0	0	0	0	0.00

**Tabel Lampiran 42.** Tabel ANOVA pengamatan populasi imago *A. gossypii* 7 MST

**Analysis of Variance**

Source	DF	Adj SS	Adj MS	F-Value	P-Value
Varietas	8	0.4769	0.05961	1.41	0.265
Ulangan	2	0.2407	0.12037	2.85	0.087
Error	16	0.6759	0.04225		
Total	26	1.3935			

**Lampiran 43.** Rekapitulasi hasil pengamatan populasi imago *A. gossypii* 8 MST

Varietas	Ulangan			Total	Rata-rata
	I	II	III		
Horison	0.75	1.5	2.5	4.75	1.58
Batalion	1	3	0.75	4.75	1.58
Panex 100 F1	2.25	1.75	2	6	2.00
Kastilo	2.25	3.25	1.75	7.25	2.42
Ferosa	0.5	3	2.75	6.25	2.08
PM 999 F1	0.5	2.5	0.5	3.5	1.17
Dewata 43 F1	1.75	1	2.75	5.5	1.83
Bhaskara	3.5	1.75	1.25	6.5	2.17
Bara	3.5	0.5	1.75	5.75	1.92

**Tabel Lampiran 43.** Tabel ANOVA pengamatan populasi imago *A. gossypii* 8 MST

**Analysis of Variance**

Source	DF	Adj SS	Adj MS	F-Value	P-Value
Varietas	8	3.3333	0.4167	0.32	0.947
Ulangan	2	0.3750	0.1875	0.14	0.867
Error	16	20.8333	1.3021		
Total	26	24.5417			

**Lampiran 44.** Rekapitulasi hasil pengamatan populasi imago *A. gossypii* 9 MST

Varietas	Ulangan			Total	Rata-rata
	I	II	III		
Horison	3.75	1.25	7.25	12.25	4.08
Batalion	4	4.25	10.5	18.75	6.25
Panex 100 F1	1.5	6.75	9	17.25	5.75
Kastilo	5.75	5.25	13	24	8.00
Ferosa	4.75	4.5	19	28.25	9.42
PM 999 F1	3.25	6.75	18	28	9.33
Dewata 43 F1	1.75	9.5	14.25	25.5	8.50
Bhaskara	3.5	11	19.75	34.25	11.42
Bara	4	12.75	20.25	37	12.33

**Tabel Lampiran 44.** Tabel ANOVA pengamatan populasi imago *A. gossypii* 9 MST

**Analysis of Variance**

Source	DF	Adj SS	Adj MS	F-Value	P-Value
Varietas	8	170.7	21.336	2.39	0.066
Ulangan	2	570.3	285.141	31.89	0.000
Error	16	143.1	8.941		
Total	26	884.0			



**Lampiran 45.** Rekapitulasi hasil pengamatan populasi imago *A. gossypii* 10 MST

Varietas	Ulangan			Total	Rata-rata
	I	II	III		
Horison	13.5	7.75	9	30.25	10.08
Batalion	11.25	9.75	10.5	31.5	10.50
Panex 100 F1	14.25	9	10.75	34	11.33
Kastilo	16.75	7.25	9	33	11.00
Ferosa	10	5.75	10.75	26.5	8.83
PM 999 F1	11.5	9.5	5.75	26.75	8.92
Dewata 43 F1	12.75	9.75	12	34.5	11.50
Bhaskara	3.75	7.5	6.75	18	6.00
Bara	7.25	12	6	25.25	8.42

**Tabel Lampiran 45.** Tabel ANOVA pengamatan populasi imago *A. gossypii* 10 MST  
**Analysis of Variance**

Source	DF	Adj SS	Adj MS	F-Value	P-Value
Varietas	8	75.09	9.386	1.31	0.305
Ulangan	2	34.92	17.461	2.44	0.118
Error	16	114.29	7.143		
Total	26	224.30			

**Lampiran 46.** Rekapitulasi hasil pengamatan populasi imago *A. gossypii* 11 MST

Varietas	Ulangan			Total	Rata-rata
	I	II	III		
Horison	8	10	5.25	23.25	7.75
Batalion	6.25	7.25	7.5	21	7.00
Panex 100 F1	11.5	11.75	3	26.25	8.75
Kastilo	4.25	11.25	4.25	19.75	6.58
Ferosa	8.75	9.25	4.25	22.25	7.42
PM 999 F1	6.5	15	7.25	28.75	9.58
Dewata 43 F1	12	10.25	5.5	27.75	9.25
Bhaskara	10.5	10.25	6.75	27.5	9.17
Bara	7.25	6.25	5.25	18.75	6.25

**Tabel Lampiran 46.** Tabel ANOVA pengamatan populasi imago *A. gossypii* 11 MST  
**Analysis of Variance**

Source	DF	Adj SS	Adj MS	F-Value	P-Value
Varietas	8	37.38	4.672	0.86	0.564
Ulangan	2	100.93	50.465	9.34	0.002
Error	16	86.49	5.405		
Total	26	224.79			

**Lampiran 47.** Rekapitulasi hasil pengamatan populasi imago *A. gossypii* 12 MST

Varietas	Ulangan			Total	Rata-rata
	I	II	III		
Horison	5.75	13.25	12.5	31.5	10.50
Batalion	4.5	5	14.5	24	8.00
Panex 100 F1	7.25	5	8.25	20.5	6.83
Kastilo	11.5	7	7	25.5	8.50
Ferosa	7.25	17.25	11.5	36	12.00
PM 999 F1	5.75	13.75	8	27.5	9.17
Dewata 43 F1	6.75	19	13.75	39.5	13.17
Bhaskara	4.25	18	9.75	32	10.67
Bara	5	14.75	14	33.75	11.25

**Tabel Lampiran 47.** Tabel ANOVA pengamatan populasi imago *A. gossypii* 12 MST

**Analysis of Variance**

Source	DF	Adj SS	Adj MS	F-Value	P-Value
Varietas	8	99.77	12.47	0.80	0.611
Ulangan	2	182.06	91.03	5.84	0.012
Error	16	249.23	15.58		
Total	26	531.06			

**Lampiran 48.** Rekapitulasi hasil pengamatan populasi imago *A. gossypii* 13 MST

Varietas	Ulangan			Total	Rata-rata
	I	II	III		
Horison	13.5	12.25	6.25	32	10.67
Batalion	11.25	13.25	9	33.5	11.17
Panex 100 F1	11.75	7.25	17.75	36.75	12.25
Kastilo	12.25	11.5	19.75	43.5	14.50
Ferosa	9.5	8.25	12	29.75	9.92
PM 999 F1	11.75	11.75	16.5	40	13.33
Dewata 43 F1	14.5	10.25	17	41.75	13.92
Bhaskara	6.25	5	9	20.25	6.75
Bara	4.75	9.5	17.25	31.5	10.50

**Tabel Lampiran 48.** Tabel ANOVA pengamatan populasi imago *A. gossypii* 13 MST

**Analysis of Variance**

Source	DF	Adj SS	Adj MS	F-Value	P-Value
Varietas	8	136.83	17.10	1.44	0.255
Ulangan	2	79.39	39.69	3.33	0.062
Error	16	190.44	11.90		
Total	26	406.67			

**Lampiran 49.** Rekapitulasi hasil pengamatan populasi imago *A. gossypii* 14 MST

Varietas	Ulangan			Total	Rata-rata
	I	II	III		
Horison	7	6.25	9.25	22.5	7.50
Batalion	9.25	12	2.75	24	8.00
Panex 100 F1	3.75	4.75	1.75	10.25	3.42
Kastilo	4.5	4.75	1.75	11	3.67
Ferosa	7.25	5.25	3	15.5	5.17
PM 999 F1	4.75	4.75	4.5	14	4.67
Dewata 43 F1	5.75	9.75	4.75	20.25	6.75
Bhaskara	6.5	4.75	7.25	18.5	6.17
Bara	9	4.25	8.5	21.75	7.25

**Tabel Lampiran 49.** Tabel ANOVA pengamatan populasi imago *A. gossypii* 14 MST  
**Analysis of Variance**

Source	DF	Adj SS	Adj MS	F-Value	P-Value
Varietas	8	68.31	8.539	1.58	0.207
Ulangan	2	13.84	6.919	1.28	0.305
Error	16	86.37	5.398		
Total	26	168.52			

**Lampiran 50.** Rekapitulasi hasil pengamatan populasi imago *A. gossypii* 15 MST

Varietas	Ulangan			Total	Rata-rata
	I	II	III		
Horison	3.75	0	5	8.75	2.92
Batalion	4.5	8.25	3	15.75	5.25
Panex 100 F1	4.75	4	7.75	16.5	5.50
Kastilo	8.25	3.75	5.25	17.25	5.75
Ferosa	5.25	10.5	5.25	21	7.00
PM 999 F1	10	4.25	11	25.25	8.42
Dewata 43 F1	4	5	8.25	17.25	5.75
Bhaskara	3.75	5	7	15.75	5.25
Bara	7	3.75	6.5	17.25	5.75

**Tabel Lampiran 50.** Tabel ANOVA pengamatan populasi imago *A. gossypii* 15 MST  
**Analysis of Variance**

Source	DF	Adj SS	Adj MS	F-Value	P-Value
Varietas	8	51.78	6.473	1.02	0.457
Ulangan	2	11.70	5.850	0.93	0.417
Error	16	101.13	6.321		
Total	26	164.62			



(A)



(B)

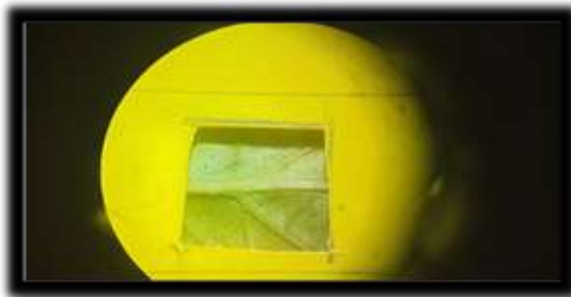
**Lampiran Gambar 1.** A. Pengolahan lahan menggunakan traktor, B. Pemasangan mulsa



(A)



(B)



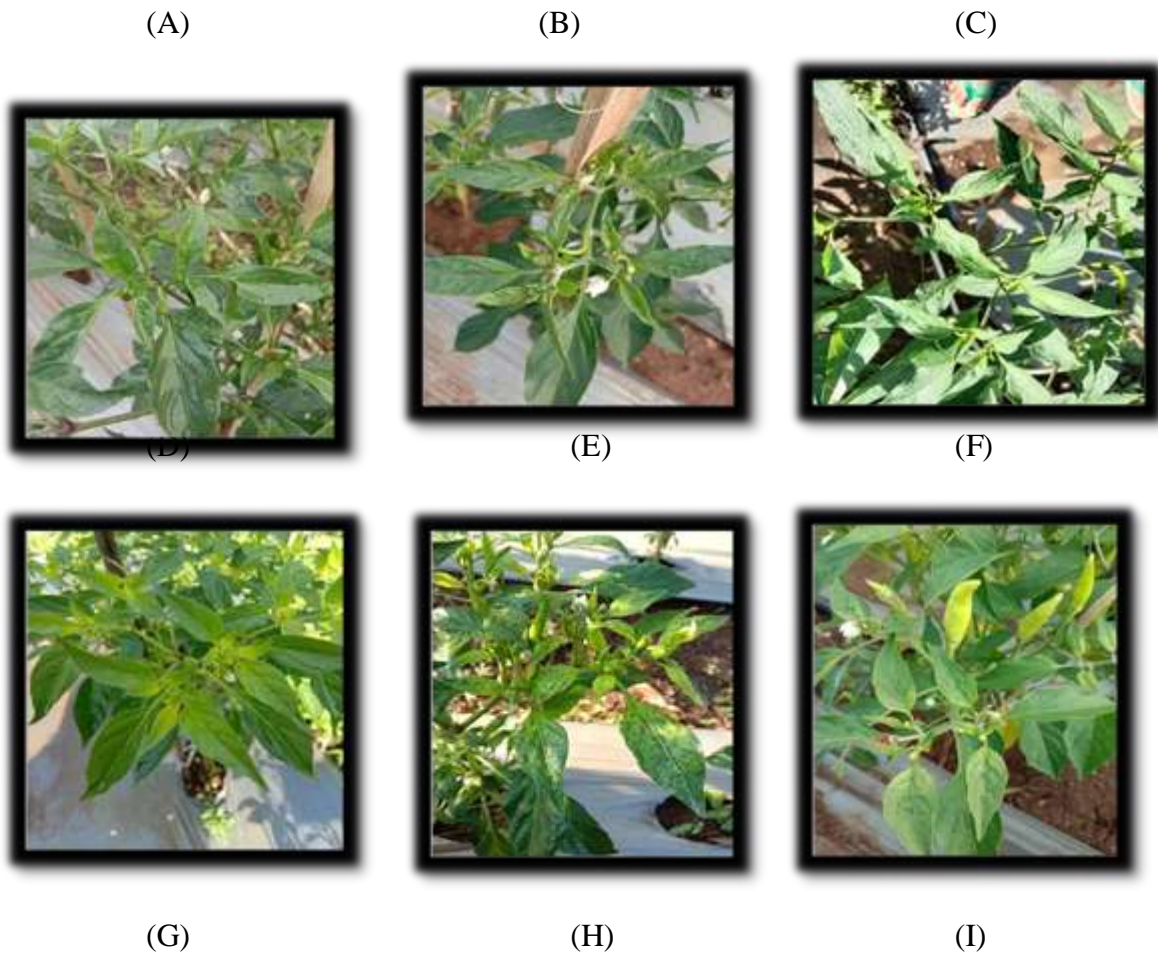
(C)



(D)

**Lampiran Gambar 2.** A. Sampel daun cabai, B. Sampel serangga, C. Contoh pengamatan menggunakan plastik berlubang dengan diameter 1x1 cm<sup>2</sup>. D. Proses pengamatan menggunakan mikroskop serangga.





**Lampiran Gambar 3.** Varietas cabai. A. Horison, B. Batalion, C. Panex 100 F1, D. Ferosa, E. Kastilo, F. PM 999 F1, G. Dewata, H. Bhaskara, I. Bara.

