

## DAFTAR PUSTAKA

- Amalia. 2000. Pertumbuhan dan Perkembangan Embrio Itik Mandalung II. Skripsi. Fakultas Peternakan Institut Pertanian Bogor, Bogor.
- Amaluddin, F., I. Soswoyo dan Roesdiyanto. 2013. Bobot dan Persentase bagian-bagian karkas itik mojosari afkir berdasarkan sistem dan lokasi pemeliharaan. *Jurnal Ilmiah Peternakan*,1 (3): 924-932.
- Atika, N.P. 2016. Persentase Karkas, Bagian-Bagian Karkas dan Lemak Abdominal Itik Lokal (*Anas Sp.*) yang Diberi Tepung Kunyit (*Curcuma Domestica Val.*) dalam Pakan. Skripsi. Fakultas Peternakan Universitas Hasanuddin, Makassar.
- Anissaputri, Ismoyowati, Mugiyono, S. 2013. Perbedaan bobot dan Persentase bagian-bagian karkas dan non karkas pada itik lokal (*Anas planthyrincos*) dan itik entok (*Carina moschata*). *Jurnal Ilmiah Peternakan*, 1(3) : 1086 – 1094
- Ayuningtyas, G. Jakaria, Rukmiasih, Budiman, C. 2016. Produktivitas entok betina dengan pemberian pakan terbatas selama periode pertumbuhan. *Jurnal Ilmu Produksi dan Teknologi Peternakan*, 4(2) : 280-283, ISSN 2303-2227.
- Bakrie, B., Suwandi, dan Simanjuntak, L. 2010. Prospek pemeliharaan terpadu tiktok dengan padi, ikan, dan azolla di wilayah Provinsi DKI Jakarta. *Jurnal Watarzoa*. 2(15) : 45-50
- Basthomi, I.A., Busono, W., dan Maylinda, S. 2015. Productive performance of hybrid duck on various feather color. *Jurnal Peternakan Indonesia*, 1(3) : 1 – 7.
- Dewanti, R., Irham, M., dan Sudiyono. 2013. Pengaruh penggunaan eceng gondok (*Eichornia crassipes*) terfermentasi dalam ransum terhadap persentase karkas, non karkas, dan lemak abdominal itik lokal jantan umur delapan minggu. *Buletin Peternakan*. 37(1) : 19-25.
- Dinas Peternakan dan Kesehatan Hewan Sulawesi Selatan. 2018. Data Statistik Sektoral Bidang Peternakan Sulawesi Selatan: Makassar. 47-49.
- Direktorat Jendral Peternakan dan Kesehatan Hewan Propinsi Sulawesi Selatan. 2018. Data Sektoral Statistik Peternakan Bidang Pembibitan. Dinas Peternakan dan Kesehatan Hewan Sulawesi Selatan: Makassar.
- Direktorat Jendral Peternakan dan Kesehatan Hewan Kementrian Pertanian Republik Indonesia (DITJENNAK). 2019. Statistik Peternakan. Direktorat Jenderal Peternakan Kementerian Pertanian: Jakarta.

- Direktorat Jendral Peternakan dan Kesehatan Hewan Kementrian Pertanian Republik Indonesia (DITJENNAK). 2017. Statististik Peternakan dan Kesehatan Hewan. Direktorat Jenderal Peternakan dan Kesehatan Hewan Kementerian Pertanian RI: Jakarta.
- Irham, M. 2012. Pengaruh Penggunaan Enceng Gondok (*Eichornia crassipes*) Fermentasi dalam Ransum terhadap Persentase Karkas, Non karkas dan Lemak Abdominal Itik Lokal Jantan Umur Delapan Minggu. Skripsi. Fakultas Pertanian Universitas Sebelas Maret, Surakarta.
- Ismoyowati, Suswoyo, I., Sudewo, A., dan Santosa. 2009. Peningkatan produktivitas itik tegal melalui seleksi individu. *Journal Animal production*, 11(3): 183- 188.
- Kharisma, N., Anissaputri, Ismoyowati, dan Mugiyono, S. 2013. Perbedaan bobot dan persentase bagian-bagian karkas dan non karkas pada itik lokal (*Anas plathyrynchos*) dan entok (*Carina moschata*). *Jurnal Ilmiah Peternakan*, 1(3) : 1086 – 1094
- Kokoszyński, D., Piwczyński, D., Arpášová, H., Hrnčar, C., Saleh, M., and Wasilewski, R. 2019. A comparative study of carcass characteristics and meat quality in genetic resources pekin ducks and commercial crossbreds. *Asian-Australasian Journal of Animal Sciences*, 32(11), 1753–1762. <https://doi.org/10.5713/ajas.18.0790>
- Matittaputty, R., dan Suryana. 2010. Karakteristik daging itik dan permasalahan serta upaya pencegahan *off-flavor* akibat oksidasi lipida procula. *Jurnal Watarzoa*, 20(3) : 210-215
- Martono, N. 2011. Metode penelitian kuantitatif analisis isi dan analisis data Sekunder. Raja Grafindo Persada: Jakarta.
- Muharlieni. 2008. Respon penggantian pakan *starter* ke *finisher* terhadap kinerja produksi dan persentase karkas pada tiktok. *Jurnal Ternak Tropika*, 9 (2): 53-60
- Nova, Sabrina, dan Trianawati. 2015. Pengaruh level pemberian tepung kunyit (*Curcuma Domestica Val*) dalam ransum terhadap karkas itik lokal. *Jurnal Peternakan Indonesia*. 17 (3): ISSN 1907-1760
- Omojola, A.B. 2007. Carcass and organoleptic characteristics of duck meat as influenced by breed and sex. *International Journal of Poultry Science*, 6(5), 329–334. <https://doi.org/10.3923/ijps.2007.329.334>
- Purwanti. 2008. Kajian Efektifitas Pemberian Kunyit, Bawang Putih dan Mineral Zink terhadap Performa, Kadar Lemak, Kolesterol dan Status Kesehatan Broiler. Thesis: Pascasarjana. Institut Pertanian Bogor, Bogor.

- Ramadhana, W., Sunarti, D., dan Sarjana, T.A. 2018. Produksi karkas dan persentase lemak abdominal itik tegal jantan dengan sistem pemeliharaan intensif dan semi intensif di KTT Bulusari Pemalang. *Jurnal Ilmiah Peternakan Terpadu*, 7(1): 173-179, Kemenristekdikti RI No. 21/E/KPT/2018 ISSN: 2614-0497
- Ricardo, A. Y. 2014. Gambaran bobot hidup, karkas, persentase karkas dan lemak abdomen tiga jenis itik lokal di pembibitan itik “ER” Payobasung, Payakumbuh. Skripsi: Jurusan Teknologi Produksi Ternak. Fakultas Peternakan. Universitas Andalas. Padang.
- Ridwan, M., Sari, M., Andika, R.D., dan Candra. 2011. Usaha budidaya itik pedaging jenis hibrida dan peking. *Jurnal Peternakan Terapan*. 1(1) : 8 – 10.
- Rosyidi, D. 2000. Dampak *docking* dan tingkat konsentrat pada domba ekor gemuk terhadap bobot potong, persentase karkas dan persentase bagian tubuh non karkas. *Jurnal Ilmiah Habitat*, 1(1) : 122-127.
- Scanes, C.G., Samuel., dan J. Bowe. 2004. *The Role of Growth Hormone in the Domestic Fowl*. New Brunswick: The State University.
- Stell, R.G.D., dan J.H. Torrie. 1993. Prinsip dan Prosedur Statistika. PT. Gramedia: Jakarta.
- Srigandono, B. 2000. Beternak Itik Pedaging. Trubus Agriwidya: Jakarta
- Soeparno. 2006. Ilmu dan Teknologi Daging. Gadjah Mada University Press: Yogyakarta.
- Soeparno. 2000. Ilmu dan Teknologi Daging. Gajah Mada University Press. Yogyakarta.
- Solihin, R., Handarini., dan Dihansih, A. 2018. Persentase bagian-bagian karkas itik lokal jantan yang ransumnya ditambah larutan daun sirih (*Piper betle linn*) dan bunga kecombran (*Etlingera elatior*). *Jurnal Peternakan Nusantara*, 4(1) : 30-35. ISSN : 2442-2541
- Suartiningsih, N., Dewi., dan Utami, N. 2000. Komponen non karkas itik bali jantan umur 8 minggu yang diberi ransum biosuplemen yang memanfaatkan bakteri unggul asal rayap. *Jurnal of Tropical Animal Science*, 4 (1) : 109-125
- Suryana. 2013. Pemanfaatan keragaman genetik untuk meningkatkan produktivitas itik alabio. *Jurnal Litbang Pertanian*, 32 (3) : 100-111.
- Sylvia, C.H., Hehanussa, H., Tabita, N., Christine, C.E. 2018. Kinerja produksi dan kualitas karkas itik yang diberi ransum mengandung ampas sagu. *Jurnal Teknologi Pertanian*, 7(1) : 1-8, DOI: 10.30598/jagritekno.2018.7.1.1

- Tamzil, H., M. 2018. Sumber daya genetik entok (*Cairina moschata*): profil dan potensi produksi sebagai penghasil daging. *Jurnal Watarzoa*, 28 (3) : 129-138.
- Widodo, P., Jakaria., Rukmiasih. 2012. Performa Pertumbuhan dan Produksi Karkas Mandalung Hasil Hibridisasi antara Entok Jantan (*Cairina moschata*) dengan Itik Betina (*Anas platyrhynchos*). *Jurnal Sains Terapan*, 5(1): 8-15

Lampiran 1. Hasil Analisis Statistik

**TIKTOK X EN TOK**

**Group Statistics**

	JENIS TERNAK	N	Mean	Std. Deviation	Std. Error Mean
BOBOT HIDUP	TIKTOK	5	1420.0000	130.38405	58.30952
	ENTOK	5	1518.0000	39.62323	17.72005
BOBOT POTONG	TIKTOK	5	1240.0000	114.01754	50.99020
	ENTOK	5	1328.0000	97.12106	43.43386
BOBOT KARKAS	TIKTOK	5	763.0000	50.19960	22.44994
	ENTOK	5	736.4800	60.60336	27.10265
PERSENTASE KARKAS (%)	TIKTOK	5	53.8720	2.66909	1.19365
	ENTOK	5	48.4660	2.77469	1.24088
SAYAP (%)	TIKTOK	5	16.7580	1.74624	.78094
	ENTOK	5	20.5320	.61116	.27332
DADA UTUH (%)	TIKTOK	5	33.1940	4.26220	1.90611
	ENTOK	5	19.1920	1.12817	.50453
PAHA UTUH (%)	TIKTOK	5	24.3060	.57665	.25789
	ENTOK	5	31.8540	3.71149	1.65983
PAHA BAWAH (%)	TIKTOK	5	12.2980	.37439	.16743
	ENTOK	5	19.3400	1.91260	.85534
PAHA ATAS (%)	TIKTOK	5	11.1700	1.20549	.53911
	ENTOK	5	12.4380	2.36586	1.05804
PUNGGUNG (%)	TIKTOK	5	25.0480	2.78552	1.24572
	ENTOK	5	25.6560	1.64400	.73522
KEPALA (%)	TIKTOK	5	6.8240	.73364	.32809
	ENTOK	5	5.8880	.39783	.17792
JANTUNG (%)	TIKTOK	5	.9980	.27689	.12383
	ENTOK	5	.6720	.03271	.01463
GIZZARD (%)	TIKTOK	5	4.6360	.54848	.24529
	ENTOK	5	6.0000	.49341	.22066
HATI (%)	TIKTOK	5	3.9860	.58089	.25978
	ENTOK	5	2.8200	.12062	.05394
LEHER (%)	TIKTOK	5	6.8180	.84945	.37989
	ENTOK	5	7.1260	.70985	.31745
SHANK (%)	TIKTOK	5	3.6660	.47805	.21379
	ENTOK	5	4.2400	.15460	.06914
TRAKEA (%)	TIKTOK	5	.8000	.17073	.07635
	ENTOK	5	.3540	.05273	.02358
ESOPHAGUS (%)	TIKTOK	5	1.9420	.34084	.15243
	ENTOK	5	.9660	.25344	.11334

B_GINJAL	TIKTOK	5	.7940	.18902	.08453
	ENTOK	5	.7020	.10474	.04684
KLOAKA (%)	TIKTOK	5	1.8920	.30540	.13658
	ENTOK	5	3.0800	.81019	.36233
USUS (%)	TIKTOK	5	5.4720	.83894	.37519
	ENTOK	5	5.7460	.70896	.31706
DAGING DADA (%)	TIKTOK	5	50.0200	7.44310	3.32866
	ENTOK	5	68.9520	4.43243	1.98224
TULANG DADA (%)	TIKTOK	5	30.8780	7.68206	3.43552
	ENTOK	5	28.7900	2.65745	1.18845
MEAT BONE RATIO	TIKTOK	5	1.7320	.63959	.28603
	ENTOK	5	2.4240	.39285	.17569
DAGING PAHA ATAS (%)	TIKTOK	5	80.8060	5.26355	2.35393
	ENTOK	5	78.3400	1.98464	.88756
TULANG PAHA ATAS (%)	TIKTOK	5	21.4780	3.47256	1.55298
	ENTOK	5	19.7640	1.69771	.75924
MEAT BONE RATIO	TIKTOK	5	3.8120	.41155	.18405
	ENTOK	5	3.9920	.40935	.18307
DAGING PAHA BAWAH (%)	TIKTOK	5	82.4480	3.07751	1.37630
	ENTOK	5	77.6420	3.06727	1.37172
TULANG PAHA BAWAH (%)	TIKTOK	5	23.2520	4.65518	2.08186
	ENTOK	5	20.8520	2.31175	1.03384
MEAT BONE RATIO	TIKTOK	5	3.6360	.57795	.25847
	ENTOK	5	3.7700	.54544	.24393

**TIKTOK X ENTOK**

**Independent Samples Test**

		Levene's Test for Equality of Variances		t-test for Equality of Means						
		F	Sig.	t	df	Sig. (2-tailed)	Mean Difference	Std. Error Difference	95% Confidence Interval of the Difference	
									Lower	Upper
BOBOT HIDUP	Equal variances assumed	6.998	.029	-1.608	8	.146	-98.00000	60.94260	-238.53388	42.53388
	Equal variances not assumed			-1.608	4.733	.172	-98.00000	60.94260	-257.35832	61.35832
BOBOT POTONG	Equal variances assumed	.270	.618	-1.314	8	.225	-88.00000	66.98134	-242.45925	66.45925
	Equal variances not assumed			-1.314	7.803	.226	-88.00000	66.98134	-243.14187	67.14187
BOBOT KARKAS	Equal variances assumed	.003	.958	.754	8	.473	26.52000	35.19309	-54.63541	107.67541
	Equal variances not assumed			.754	7.732	.473	26.52000	35.19309	-55.12750	108.16750
PERSENTASE KARKAS (%)	Equal variances assumed	.021	.889	3.140	8	.014	5.40600	1.72180	1.43553	9.37647
	Equal variances not assumed			3.140	7.988	.014	5.40600	1.72180	1.43449	9.37751
SAYAP (%)	Equal variances assumed	3.536	.097	-4.561	8	.002	-3.77400	.82739	-5.68197	-1.86603
	Equal variances not assumed			-4.561	4.965	.006	-3.77400	.82739	-5.90534	-1.64266
DADA UTUH (%)	Equal variances assumed	8.212	.021	7.101	8	.000	14.00200	1.97176	9.45512	18.54888
	Equal variances not assumed			7.101	4.558	.001	14.00200	1.97176	8.78188	19.22212
PAHA UTUH (%)	Equal variances assumed	14.309	.005	-4.494	8	.002	-7.54800	1.67974	-11.42150	-3.67450
	Equal variances not assumed			-4.494	4.193	.010	-7.54800	1.67974	-12.12826	-2.96774
PAHA BAWAH (%)	Equal variances assumed	3.021	.120	-8.080	8	.000	-7.04200	.87158	-9.05186	-5.03214
	Equal variances not assumed			-8.080	4.306	.001	-7.04200	.87158	-9.39553	-4.68847
PAHA ATAS (%)	Equal variances assumed	1.345	.280	-1.068	8	.317	-1.26800	1.18747	-4.00632	1.47032
	Equal variances not assumed			-1.068	5.946	.327	-1.26800	1.18747	-4.18007	1.64407
PUNGGUNG (%)	Equal variances assumed	.327	.583	-.420	8	.685	-.60800	1.44650	-3.94364	2.72764
	Equal variances not assumed			-.420	6.485	.688	-.60800	1.44650	-4.08426	2.86826
KEPALA (%)	Equal variances assumed	3.663	.092	2.508	8	.036	.93600	.37323	.07533	1.79667
	Equal variances not assumed			2.508	6.165	.045	.93600	.37323	.02864	1.84336
JANTUNG (%)	Equal variances assumed	12.613	.007	2.614	8	.031	.32600	.12469	.03846	.61354
	Equal variances not assumed			2.614	4.112	.058	.32600	.12469	-.01652	.66852
GIZZARD (%)	Equal variances assumed	.630	.450	-4.134	8	.003	-1.36400	.32993	-2.12483	-.60317
	Equal variances not assumed			-4.134	7.912	.003	-1.36400	.32993	-2.12630	-.60170
HATI (%)	Equal variances assumed	24.491	.001	4.395	8	.002	1.16600	.26532	.55417	1.77783
	Equal variances not assumed			4.395	4.344	.010	1.16600	.26532	.45181	1.88019
LEHER (%)	Equal variances assumed	1.058	.334	-.622	8	.551	-.30800	.49507	-1.44962	.83362
	Equal variances not assumed			-.622	7.755	.552	-.30800	.49507	-1.45592	.83992
SHANK (%)	Equal variances assumed	4.898	.058	-2.555	8	.034	-.57400	.22469	-1.09214	-.05586
	Equal variances not assumed			-2.555	4.828	.053	-.57400	.22469	-1.15785	.00985

TRAKEA (%)	Equal variances assumed	9.192	.016	5.581	8	.001	.44600	.07991	.26172	.63028
	Equal variances not assumed			5.581	4.756	.003	.44600	.07991	.23737	.65463
ESOPHAGUS (%)	Equal variances assumed	1.165	.312	5.138	8	.001	.97600	.18995	.53798	1.41402
	Equal variances not assumed			5.138	7.388	.001	.97600	.18995	.53158	1.42042
B_GINJAL	Equal variances assumed	.777	.404	.952	8	.369	.09200	.09664	-.13086	.31486
	Equal variances not assumed			.952	6.245	.377	.09200	.09664	-.14225	.32625
KLOAKA (%)	Equal variances assumed	2.271	.170	-3.068	8	.015	-1.18800	.38721	-2.08092	-.29508
	Equal variances not assumed			-3.068	5.114	.027	-1.18800	.38721	-2.17671	-.19929
USUS (%)	Equal variances assumed	.770	.406	-.558	8	.592	-.27400	.49121	-1.40674	.85874
	Equal variances not assumed			-.558	7.784	.593	-.27400	.49121	-1.41225	.86425
DAGING DADA (%)	Equal variances assumed	1.369	.276	-4.887	8	.001	-18.93200	3.87418	-27.86586	-9.99814
	Equal variances not assumed			-4.887	6.520	.002	-18.93200	3.87418	-28.23144	-9.63256
TULANG DADA (%)	Equal variances assumed	4.571	.065	.574	8	.582	2.08800	3.63528	-6.29496	10.47096
	Equal variances not assumed			.574	4.944	.591	2.08800	3.63528	-7.28880	11.46480
MEAT BONE RATIO	Equal variances assumed	4.601	.064	-2.061	8	.073	-.69200	.33568	-1.46608	.08208
	Equal variances not assumed			-2.061	6.642	.080	-.69200	.33568	-1.49451	.11051
DAGING PAHA ATAS (%)	Equal variances assumed	7.711	.024	.980	8	.356	2.46600	2.51570	-3.33521	8.26721
	Equal variances not assumed			.980	5.115	.371	2.46600	2.51570	-3.95739	8.88939
TULANG PAHA ATAS (%)	Equal variances assumed	1.254	.295	.992	8	.350	1.71400	1.72864	-2.27224	5.70024
	Equal variances not assumed			.992	5.809	.361	1.71400	1.72864	-2.54980	5.97780
MEAT BONE RATIO	Equal variances assumed	.131	.727	-.693	8	.508	-.18000	.25959	-.77862	.41862
	Equal variances not assumed			-.693	8.000	.508	-.18000	.25959	-.77862	.41862
DAGING PAHA BAWAH (%)	Equal variances assumed	.001	.980	2.473	8	.039	4.80600	1.94315	.32508	9.28692
	Equal variances not assumed			2.473	8.000	.039	4.80600	1.94315	.32508	9.28692
TULANG PAHA BAWAH (%)	Equal variances assumed	1.315	.285	1.033	8	.332	2.40000	2.32443	-2.96015	7.76015
	Equal variances not assumed			1.033	5.860	.343	2.40000	2.32443	-3.32084	8.12084
MEAT BONE RATIO	Equal variances assumed	.000	.988	-.377	8	.716	-.13400	.35540	-.95354	.68554
	Equal variances not assumed			-.377	7.973	.716	-.13400	.35540	-.95402	.68602



## LOKAL x TIKTOK

### Group Statistics

	JENIS TERNAK	N	Mean	Std. Deviation	Std. Error Mean
BOBOT HIDUP	ITIK LOKAL	5	1520.0000	33.91165	15.16575
	TIKTOK	5	1420.0000	130.38405	58.30952
BOBOT POTONG	ITIK LOKAL	5	1261.0000	122.44386	54.75856
	TIKTOK	5	1240.0000	114.01754	50.99020
BOBOT KARKAS	ITIK LOKAL	5	743.4800	93.75797	41.92984
	TIKTOK	5	763.0000	50.19960	22.44994
PERSENTASE KARKAS (%)	ITIK LOKAL	5	48.8620	5.62186	2.51417
	TIKTOK	5	53.8720	2.66909	1.19365
SAYAP (%)	ITIK LOKAL	5	16.8360	1.13227	.50637
	TIKTOK	5	16.7580	1.74624	.78094
DADA UTUH (%)	ITIK LOKAL	5	28.0660	2.05933	.92096
	TIKTOK	5	33.1940	4.26220	1.90611
PAHA UTUH (%)	ITIK LOKAL	5	24.8340	1.39220	.62261
	TIKTOK	5	24.3060	.57665	.25789
PAHA BAWAH (%)	ITIK LOKAL	5	13.9940	.95513	.42715
	TIKTOK	5	12.2980	.37439	.16743
PAHA ATAS (%)	ITIK LOKAL	5	10.9120	1.68630	.75414
	TIKTOK	5	11.1700	1.20549	.53911
PUNGGUNG (%)	ITIK LOKAL	5	30.6000	2.12592	.95074
	TIKTOK	5	25.0480	2.78552	1.24572
KEPALA (%)	ITIK LOKAL	5	6.2440	.26987	.12069
	TIKTOK	5	6.8240	.73364	.32809
JANTUNG (%)	ITIK LOKAL	5	.8460	.10262	.04589
	TIKTOK	5	.9980	.27689	.12383
GIZZARD (%)	ITIK LOKAL	5	4.8040	1.23547	.55252
	TIKTOK	5	4.6360	.54848	.24529
HATI (%)	ITIK LOKAL	5	2.2120	.66863	.29902
	TIKTOK	5	3.9860	.58089	.25978
LEHER (%)	ITIK LOKAL	5	8.0300	1.05778	.47305
	TIKTOK	5	6.8180	.84945	.37989
SHANK (%)	ITIK LOKAL	5	2.8540	.16950	.07580
	TIKTOK	5	3.6660	.47805	.21379
TRAKEA (%)	ITIK LOKAL	5	.5940	.13795	.06169
	TIKTOK	5	.8000	.17073	.07635
ESOPHAGUS (%)	ITIK LOKAL	5	1.0560	.40839	.18264
	TIKTOK	5	1.9420	.34084	.15243
B_GINJAL	ITIK LOKAL	5	.6620	.15707	.07024
	TIKTOK	5	.7940	.18902	.08453
KLOAKA (%)	ITIK LOKAL	5	2.0020	.59470	.26596
	TIKTOK	5	1.8920	.30540	.13658

USUS (%)	ITIK LOKAL	5	4.3140	1.72130	.76979
	TIKTOK	5	5.4720	.83894	.37519
DAGING DADA (%)	ITIK LOKAL	5	79.1880	3.43960	1.53824
	TIKTOK	5	50.0200	7.44310	3.32866
TULANG DADA (%)	ITIK LOKAL	5	20.2760	3.38234	1.51263
	TIKTOK	5	30.8780	7.68206	3.43552
MEAT BONE RATIO	ITIK LOKAL	5	4.0160	.85903	.38417
	TIKTOK	5	1.7320	.63959	.28603
DAGING PAHA ATAS (%)	ITIK LOKAL	5	82.4520	4.54211	2.03129
	TIKTOK	5	80.8060	5.26355	2.35393
TULANG PAHA ATAS (%)	ITIK LOKAL	5	17.0280	4.23965	1.89603
	TIKTOK	5	21.4780	3.47256	1.55298
MEAT BONE RATIO	ITIK LOKAL	5	5.0800	1.22795	.54915
	TIKTOK	5	3.8120	.41155	.18405
DAGING PAHA BAWAH (%)	ITIK LOKAL	5	81.6140	2.38312	1.06577
	TIKTOK	5	82.4480	3.07751	1.37630
TULANG PAHA BAWAH (%)	ITIK LOKAL	5	18.1680	1.94322	.86904
	TIKTOK	5	23.2520	4.65518	2.08186
MEAT BONE RATIO	ITIK LOKAL	5	4.5400	.55439	.24793
	TIKTOK	5	3.6360	.57795	.25847

**LOKAL x TIKTOK**

**Independent Samples Test**

		Levene's Test for Equality of Variances		t-test for Equality of Means						
		F	Sig.	t	df	Sig. (2-tailed)	Mean Difference	Std. Error Difference	95% Confidence Interval of the Difference	
									Lower	Upper
BOBOT HIDUP	Equal variances assumed	8.184	.021	1.660	8	.136	100.00000	60.24948	-38.93555	238.93555
	Equal variances not assumed			1.660	4.539	.164	100.00000	60.24948	-59.73259	259.73259
BOBOT POTONG	Equal variances assumed	.215	.656	.281	8	.786	21.00000	74.82312	-151.54244	193.54244
	Equal variances not assumed			.281	7.960	.786	21.00000	74.82312	-151.69472	193.69472
BOBOT KARKAS	Equal variances assumed	1.284	.290	-.410	8	.692	-19.52000	47.56166	-129.19738	90.15738
	Equal variances not assumed			-.410	6.119	.695	-19.52000	47.56166	-135.35180	96.31180
PERSENTASE KARKAS (%)	Equal variances assumed	1.704	.228	-1.800	8	.110	-5.01000	2.78314	-11.42793	1.40793
	Equal variances not assumed			-1.800	5.716	.124	-5.01000	2.78314	-11.90295	1.88295
SAYAP (%)	Equal variances assumed	1.015	.343	.084	8	.935	.07800	.93074	-2.06829	2.22429
	Equal variances not assumed			.084	6.858	.936	.07800	.93074	-2.13211	2.28811
DADA UTUH (%)	Equal variances assumed	3.753	.089	-2.422	8	.042	-5.12800	2.11694	-10.00967	-.24633
	Equal variances not assumed			-2.422	5.771	.053	-5.12800	2.11694	-10.35819	.10219
PAHA UTUH (%)	Equal variances assumed	1.705	.228	.783	8	.456	.52800	.67391	-1.02603	2.08203
	Equal variances not assumed			.783	5.333	.467	.52800	.67391	-1.17228	2.22828
PAHA BAWAH (%)	Equal variances assumed	1.533	.251	3.697	8	.006	1.69600	.45879	.63802	2.75398
	Equal variances not assumed			3.697	5.201	.013	1.69600	.45879	.53021	2.86179
PAHA ATAS (%)	Equal variances assumed	.268	.619	-.278	8	.788	-.25800	.92702	-2.39571	1.87971
	Equal variances not assumed			-.278	7.242	.789	-.25800	.92702	-2.43531	1.91931
PUNGGUNG (%)	Equal variances assumed	.000	.993	3.543	8	.008	5.55200	1.56708	1.93831	9.16569
	Equal variances not assumed			3.543	7.479	.008	5.55200	1.56708	1.89405	9.20995
KEPALA (%)	Equal variances assumed	7.653	.024	-1.659	8	.136	-.58000	.34959	-1.38615	.22615
	Equal variances not assumed			-1.659	5.063	.157	-.58000	.34959	-1.47529	.31529
JANTUNG (%)	Equal variances assumed	5.614	.045	-1.151	8	.283	-.15200	.13206	-.45653	.15253
	Equal variances not assumed			-1.151	5.078	.301	-.15200	.13206	-.48990	.18590
GIZZARD (%)	Equal variances assumed	1.700	.229	.278	8	.788	.16800	.60452	-1.22602	1.56202
	Equal variances not assumed			.278	5.518	.791	.16800	.60452	-1.34311	1.67911
HATI (%)	Equal variances assumed	.006	.942	-4.479	8	.002	-1.77400	.39611	-2.68742	-.86058
	Equal variances not assumed			-4.479	7.847	.002	-1.77400	.39611	-2.69054	-.85746
LEHER (%)	Equal variances assumed	.000	.996	1.998	8	.081	1.21200	.60671	-.18707	2.61107
	Equal variances not assumed			1.998	7.644	.082	1.21200	.60671	-.19850	2.62250
SHANK (%)	Equal variances assumed	4.457	.068	-3.580	8	.007	-.81200	.22683	-1.33507	-.28893
	Equal variances not assumed			-3.580	4.990	.016	-.81200	.22683	-1.39543	-.22857
TRAKEA (%)	Equal variances assumed	.780	.403	-2.099	8	.069	-.20600	.09816	-.43236	.02036
	Equal variances not assumed			-2.099	7.662	.071	-.20600	.09816	-.43411	.02211

ESOPHAGUS (%)	Equal variances assumed	.002	.967	-3.724	8	.006	- .88600	.23789	-1.43457	-.33743
	Equal variances not assumed			-3.724	7.752	.006	- .88600	.23789	-1.43764	-.33436
B_GINJAL	Equal variances assumed	.044	.838	-1.201	8	.264	- .13200	.10991	-.38545	.12145
	Equal variances not assumed			-1.201	7.740	.265	- .13200	.10991	-.38694	.12294
KLOAKA (%)	Equal variances assumed	.874	.377	.368	8	.722	.11000	.29898	-.57945	.79945
	Equal variances not assumed			.368	5.973	.726	.11000	.29898	-.62239	.84239
USUS (%)	Equal variances assumed	3.473	.099	-1.352	8	.213	-1.15800	.85635	-3.13275	.81675
	Equal variances not assumed			-1.352	5.799	.227	-1.15800	.85635	-3.27116	.95516
DAGING DADA (%)	Equal variances assumed	2.461	.155	7.954	8	.000	29.16800	3.66690	20.71212	37.62388
	Equal variances not assumed			7.954	5.634	.000	29.16800	3.66690	20.05219	38.28381
TULANG DADA (%)	Equal variances assumed	2.987	.122	-2.824	8	.022	-10.60200	3.75378	-19.25823	-1.94577
	Equal variances not assumed			-2.824	5.495	.033	-10.60200	3.75378	-19.99587	-1.20813
MEAT BONE RATIO	Equal variances assumed	.049	.830	4.769	8	.001	2.28400	.47896	1.17952	3.38848
	Equal variances not assumed			4.769	7.392	.002	2.28400	.47896	1.16352	3.40448
DAGING PAHA ATAS (%)	Equal variances assumed	.303	.597	.529	8	.611	1.64600	3.10920	-5.52383	8.81583
	Equal variances not assumed			.529	7.832	.611	1.64600	3.10920	-5.55065	8.84265
TULANG PAHA ATAS (%)	Equal variances assumed	.125	.733	-1.816	8	.107	-4.45000	2.45085	-10.10167	1.20167
	Equal variances not assumed			-1.816	7.701	.108	-4.45000	2.45085	-10.14007	1.24007
MEAT BONE RATIO	Equal variances assumed	1.892	.206	2.189	8	.060	1.26800	.57918	-.06758	2.60358
	Equal variances not assumed			2.189	4.887	.081	1.26800	.57918	-.23119	2.76719
DAGING PAHA BAWAH (%)	Equal variances assumed	.340	.576	-.479	8	.645	- .83400	1.74071	-4.84808	3.18008
	Equal variances not assumed			-.479	7.528	.645	- .83400	1.74071	-4.89227	3.22427
TULANG PAHA BAWAH (%)	Equal variances assumed	2.066	.189	-2.254	8	.054	-5.08400	2.25596	-10.28626	.11826
	Equal variances not assumed			-2.254	5.353	.070	-5.08400	2.25596	-10.77000	.60200
MEAT BONE RATIO	Equal variances assumed	.002	.968	2.524	8	.036	.90400	.35816	.07809	1.72991
	Equal variances not assumed			2.524	7.986	.036	.90400	.35816	.07784	1.73016

## LOKAL X ENTOK

Group Statistics

	JENIS TERNAK	N	Mean	Std. Deviation	Std. Error Mean
BOBOT HIDUP	ITIK LOKAL	5	1520.0000	33.91165	15.16575
	ENTOK	5	1518.0000	39.62323	17.72005
BOBOT POTONG	ITIK LOKAL	5	1261.0000	122.44386	54.75856
	ENTOK	5	1328.0000	97.12106	43.43386
BOBOT KARKAS	ITIK LOKAL	5	743.4800	93.75797	41.92984
	ENTOK	5	736.4800	60.60336	27.10265
PERSENTASE KARKAS (%)	ITIK LOKAL	5	48.8620	5.62186	2.51417
	ENTOK	5	48.4660	2.77469	1.24088
SAYAP (%)	ITIK LOKAL	5	16.8360	1.13227	.50637
	ENTOK	5	20.5320	.61116	.27332
DADA UTUH (%)	ITIK LOKAL	5	28.0660	2.05933	.92096
	ENTOK	5	19.1920	1.12817	.50453
PAHA UTUH (%)	ITIK LOKAL	5	24.8340	1.39220	.62261
	ENTOK	5	31.8540	3.71149	1.65983
PAHA BAWAH (%)	ITIK LOKAL	5	13.9940	.95513	.42715
	ENTOK	5	19.3400	1.91260	.85534
PAHA ATAS (%)	ITIK LOKAL	5	10.9120	1.68630	.75414
	ENTOK	5	12.4380	2.36586	1.05804
PUNGGUNG (%)	ITIK LOKAL	5	30.6000	2.12592	.95074
	ENTOK	5	25.6560	1.64400	.73522
KEPALA (%)	ITIK LOKAL	5	6.2440	.26987	.12069
	ENTOK	5	5.8880	.39783	.17792
JANTUNG (%)	ITIK LOKAL	5	.8460	.10262	.04589
	ENTOK	5	.6720	.03271	.01463
GIZZARD (%)	ITIK LOKAL	5	4.8040	1.23547	.55252
	ENTOK	5	6.0000	.49341	.22066
HATI (%)	ITIK LOKAL	5	2.2120	.66863	.29902
	ENTOK	5	2.8200	.12062	.05394
LEHER (%)	ITIK LOKAL	5	8.0300	1.05778	.47305
	ENTOK	5	7.1260	.70985	.31745
SHANK (%)	ITIK LOKAL	5	2.8540	.16950	.07580
	ENTOK	5	4.2400	.15460	.06914
TRAKEA (%)	ITIK LOKAL	5	.5940	.13795	.06169
	ENTOK	5	.3540	.05273	.02358
ESOPHAGUS (%)	ITIK LOKAL	5	1.0560	.40839	.18264
	ENTOK	5	.9660	.25344	.11334
B_GINJAL	ITIK LOKAL	5	.6620	.15707	.07024

	ENTOK	5	.7020	.10474	.04684
KLOAKA (%)	ITIK LOKAL	5	2.0020	.59470	.26596
	ENTOK	5	3.0800	.81019	.36233
USUS (%)	ITIK LOKAL	5	4.3140	1.72130	.76979
	ENTOK	5	5.7460	.70896	.31706
DAGING DADA (%)	ITIK LOKAL	5	79.1880	3.43960	1.53824
	ENTOK	5	68.9520	4.43243	1.98224
TULANG DADA (%)	ITIK LOKAL	5	20.2760	3.38234	1.51263
	ENTOK	5	28.7900	2.65745	1.18845
MEAT BONE RATIO	ITIK LOKAL	5	4.0160	.85903	.38417
	ENTOK	5	2.4240	.39285	.17569
DAGING PAHA ATAS (%)	ITIK LOKAL	5	82.4520	4.54211	2.03129
	ENTOK	5	78.3400	1.98464	.88756
TULANG PAHA ATAS (%)	ITIK LOKAL	5	17.0280	4.23965	1.89603
	ENTOK	5	19.7640	1.69771	.75924
MEAT BONE RATIO	ITIK LOKAL	5	5.0800	1.22795	.54915
	ENTOK	5	3.9920	.40935	.18307
DAGING PAHA BAWAH (%)	ITIK LOKAL	5	81.6140	2.38312	1.06577
	ENTOK	5	77.6420	3.06727	1.37172
TULANG PAHA BAWAH (%)	ITIK LOKAL	5	18.1680	1.94322	.86904
	ENTOK	5	20.8520	2.31175	1.03384
MEAT BONE RATIO	ITIK LOKAL	5	4.5400	.55439	.24793
	ENTOK	5	3.7700	.54544	.24393

**LOKAL X ENTOK**

**Independent Samples Test**

		Levene's Test for Equality of Variances		t-test for Equality of Means						
		F	Sig.	t	df	Sig. (2-tailed)	Mean Difference	Std. Error Difference	95% Confidence Interval of the Difference	
									Lower	Upper
BOBOT HIDUP	Equal variances assumed	.173	.688	.086	8	.934	2.00000	23.32381	-51.78480	55.78480
	Equal variances not assumed			.086	7.814	.934	2.00000	23.32381	-52.00883	56.00883
BOBOT POTONG	Equal variances assumed	1.091	.327	-.959	8	.366	-67.00000	69.89278	-228.17303	94.17303
	Equal variances not assumed			-.959	7.606	.367	-67.00000	69.89278	-229.63839	95.63839
BOBOT KARKAS	Equal variances assumed	.894	.372	.140	8	.892	7.00000	49.92659	-108.13093	122.13093
	Equal variances not assumed			.140	6.846	.893	7.00000	49.92659	-111.59918	125.59918
PERSENTASE KARKAS (%)	Equal variances assumed	1.763	.221	.141	8	.891	.39600	2.80372	-6.06939	6.86139
	Equal variances not assumed			.141	5.840	.892	.39600	2.80372	-6.51039	7.30239
SAYAP (%)	Equal variances assumed	.694	.429	-6.423	8	.000	-3.69600	.57542	-5.02292	-2.36908
	Equal variances not assumed			-6.423	6.148	.001	-3.69600	.57542	-5.09581	-2.29619
DADA UTUH (%)	Equal variances assumed	.667	.438	8.451	8	.000	8.87400	1.05010	6.45245	11.29555
	Equal variances not assumed			8.451	6.203	.000	8.87400	1.05010	6.32469	11.42331
PAHA UTUH (%)	Equal variances assumed	7.081	.029	-3.960	8	.004	-7.02000	1.77276	-11.10799	-2.93201
	Equal variances not assumed			-3.960	5.104	.010	-7.02000	1.77276	-11.54930	-2.49070
PAHA BAWAH (%)	Equal variances assumed	1.046	.336	-5.592	8	.001	-5.34600	.95607	-7.55070	-3.14130
	Equal variances not assumed			-5.592	5.878	.001	-5.34600	.95607	-7.69721	-2.99479
PAHA ATAS (%)	Equal variances assumed	.448	.522	-1.174	8	.274	-1.52600	1.29930	-4.52219	1.47019
	Equal variances not assumed			-1.174	7.230	.277	-1.52600	1.29930	-4.57861	1.52661
PUNGGUNG (%)	Equal variances assumed	.873	.378	4.114	8	.003	4.94400	1.20186	2.17252	7.71548
	Equal variances not assumed			4.114	7.524	.004	4.94400	1.20186	2.14169	7.74631
KEPALA (%)	Equal variances assumed	.222	.650	1.656	8	.136	.35600	.21499	-.13976	.85176
	Equal variances not assumed			1.656	7.038	.141	.35600	.21499	-.15181	.86381
JANTUNG (%)	Equal variances assumed	6.064	.039	3.612	8	.007	.17400	.04817	.06293	.28507
	Equal variances not assumed			3.612	4.805	.016	.17400	.04817	.04865	.29935
GIZZARD (%)	Equal variances assumed	2.400	.160	-2.010	8	.079	-1.19600	.59495	-2.56796	.17596
	Equal variances not assumed			-2.010	5.244	.098	-1.19600	.59495	-2.70419	.31219
HATI (%)	Equal variances assumed	4.975	.056	-2.001	8	.080	-.60800	.30385	-1.30868	.09268
	Equal variances not assumed			-2.001	4.260	.112	-.60800	.30385	-1.43169	.21569
LEHER (%)	Equal variances assumed	.309	.594	1.587	8	.151	.90400	.56970	-.40973	2.21773
	Equal variances not assumed			1.587	6.995	.157	.90400	.56970	-.44331	2.25131
SHANK (%)	Equal variances assumed	.015	.904	-13.509	8	.000	-1.38600	.10260	-1.62259	-1.14941
	Equal variances not assumed			-13.509	7.933	.000	-1.38600	.10260	-1.62293	-1.14907
TRAKEA (%)	Equal variances assumed	1.850	.211	3.634	8	.007	.24000	.06605	.08770	.39230
	Equal variances not assumed			3.634	5.144	.014	.24000	.06605	.07165	.40835

ESOPHAGUS (%)	Equal variances assumed	.645	.445	.419	8	.686	.09000	.21495	-40567	.58567
	Equal variances not assumed			.419	6.683	.689	.09000	.21495	-42320	.60320
B_GINJAL	Equal variances assumed	.647	.444	-.474	8	.648	-.04000	.08443	-.23469	.15469
	Equal variances not assumed			-.474	6.970	.650	-.04000	.08443	-.23981	.15981
KLOAKA (%)	Equal variances assumed	.390	.550	-2.398	8	.043	-1.07800	.44946	-2.11446	-.04154
	Equal variances not assumed			-2.398	7.341	.046	-1.07800	.44946	-2.13089	-.02511
USUS (%)	Equal variances assumed	5.236	.051	-1.720	8	.124	-1.43200	.83253	-3.35181	.48781
	Equal variances not assumed			-1.720	5.319	.143	-1.43200	.83253	-3.53403	.67003
DAGING DADA (%)	Equal variances assumed	.145	.713	4.080	8	.004	10.23600	2.50908	4.45006	16.02194
	Equal variances not assumed			4.080	7.535	.004	10.23600	2.50908	4.38738	16.08462
TULANG DADA (%)	Equal variances assumed	.452	.520	-4.426	8	.002	-8.51400	1.92366	-12.94996	-4.07804
	Equal variances not assumed			-4.426	7.576	.003	-8.51400	1.92366	-12.99357	-4.03443
MEAT BONE RATIO	Equal variances assumed	1.680	.231	3.769	8	.005	1.59200	.42244	.61786	2.56614
	Equal variances not assumed			3.769	5.603	.011	1.59200	.42244	.54032	2.64368
DAGING PAHA ATAS (%)	Equal variances assumed	4.477	.067	1.855	8	.101	4.11200	2.21673	-.99980	9.22380
	Equal variances not assumed			1.855	5.474	.118	4.11200	2.21673	-1.44114	9.66514
TULANG PAHA ATAS (%)	Equal variances assumed	1.904	.205	-1.340	8	.217	-2.73600	2.04239	-7.44577	1.97377
	Equal variances not assumed			-1.340	5.251	.235	-2.73600	2.04239	-7.91165	2.43965
MEAT BONE RATIO	Equal variances assumed	2.132	.182	1.880	8	.097	1.08800	.57886	-.24686	2.42286
	Equal variances not assumed			1.880	4.878	.120	1.08800	.57886	-.41126	2.58726
DAGING PAHA BAWAH (%)	Equal variances assumed	.404	.543	2.287	8	.052	3.97200	1.73709	-.03374	7.97774
	Equal variances not assumed			2.287	7.539	.053	3.97200	1.73709	-.07673	8.02073
TULANG PAHA BAWAH (%)	Equal variances assumed	.244	.634	-1.987	8	.082	-2.68400	1.35058	-5.79844	.43044
	Equal variances not assumed			-1.987	7.770	.083	-2.68400	1.35058	-5.81453	.44653
MEAT BONE RATIO	Equal variances assumed	.004	.953	2.214	8	.058	.77000	.34781	-.03205	1.57205
	Equal variances not assumed			2.214	7.998	.058	.77000	.34781	-.03208	1.57208

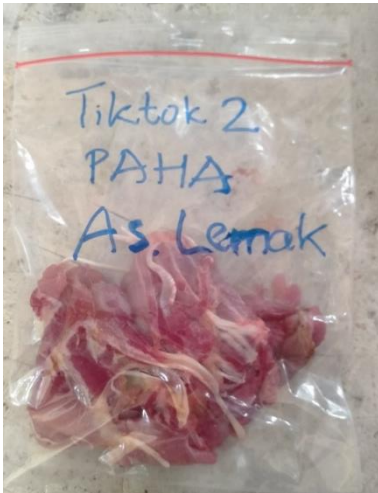


Lampiran 2. Dokumentasi Penelitian



Keterangan: Proses pemotongan, pencabutan bulu dan penimbangan itik.

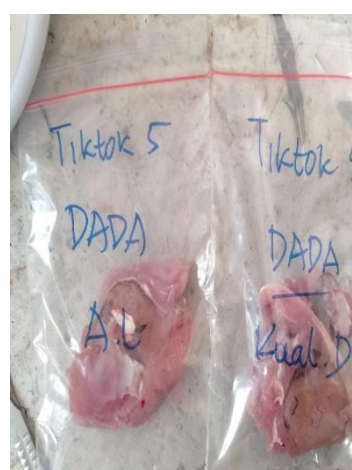
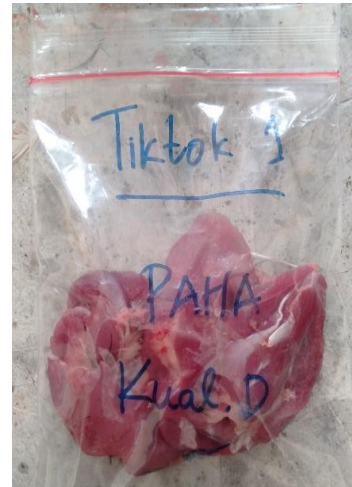
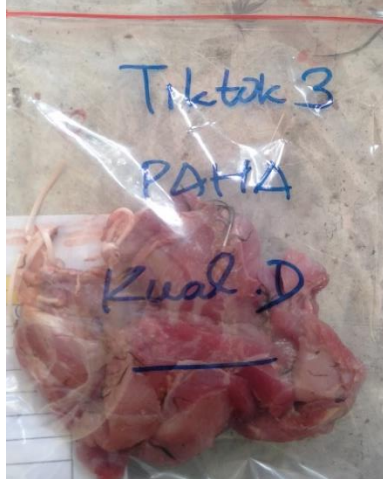
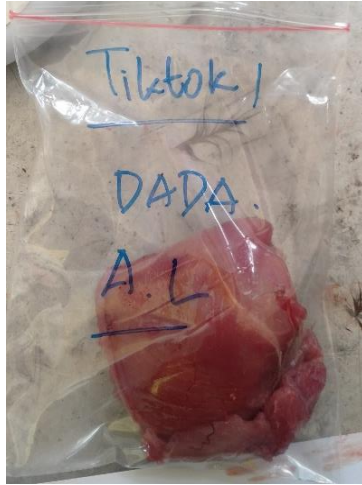
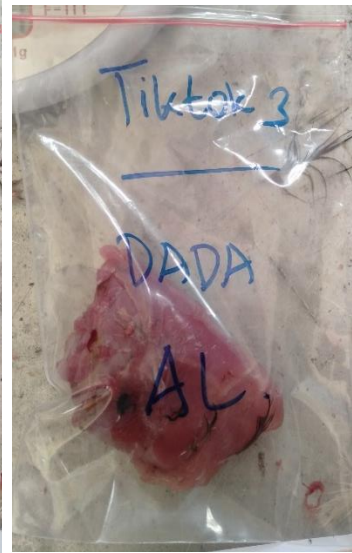
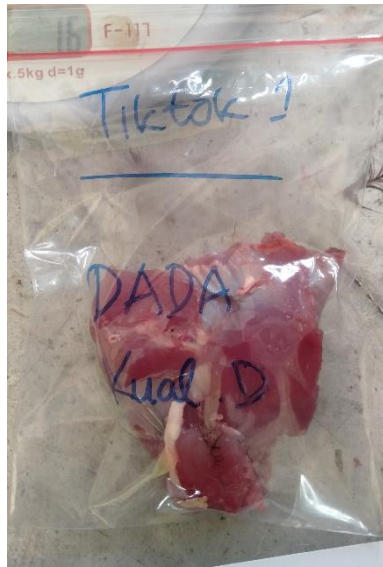
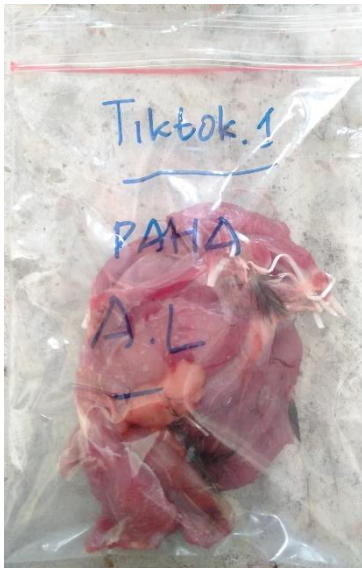












## RIWAYAT HIDUP



**Putri Indrasari** Lahir di Takalar pada tanggal 28 Agustus 1999. Anak pertama dari 3 bersaudara dari pasangan Bapak Rusdi dan Ibu Sinarwati, Penulis pertamakali menempuh Pendidikan tepat pada usia 5 tahun di Sekolah Dasar (SD) SDI. No. 141 Inpres Pa’rappunganta II Kec. Polut, Kab. Takalar tahun 2005 dan lulus tahun 2010. Pada tahun yang sama penulis melanjutkan Pendidikan di Sekolah Menengah Pertama (SMP) di SMPN 5 Polombangkeng Utara Kabupaten Takalar dan lulus pada tahun 2013. Setelah itu penulis melanjutkan Pendidikan di Sekolah Menengah Atas (SMA) di SMAN 3 Takalar dan mengambil bidang MIPA serta berhasil lulus pada tahun 2016. Kemudian di tahun yang sama penulis melanjutkan Pendidikan pada salah satu perguruan tinggi negeri di Sulawesi Selatan yaitu S1 Peternakan Universitas Hasanuddin. Selama berkuliah atau berstatus mahasiswa penulis mengikuti beberapa jenjang organisasi (Fosil, KPI, HIMAPROTEK) sebagai proses dalam mengembangkan skillnya. Berkat petunjuk dan pertolongan Allah SWT, usaha dan disertai doa kedua orangtua, support system lainnya dalam menjalani aktivitas akademik di perguruan tinggi Universitas Hasanuddin akhirnya penulis dapat menyelesaikan tugas akhir dengan skripsi yang berjudul “Perbandingan Karakteristik Kualitas Karkas Itik Lokal (*Anas platyrhynchos*), Entok (*Cairina moschata*) dan Tiktok pada Bobot Hidup yang Sama”.