

## DAFTAR PUSTAKA

- Agustinus, Y., Pratomo, A., & Apdillah, D. 2013. Struktur Komunitas Makrozoobentos Sebagai Indikator Kualitas Perairan di Pulau Lengkang Kecamatan Belakang Padang Kota Batam Provinsi Kepulauan Riau. Fakultas Ilmu Kelautan dan Perikanan Universitas Maritim Raja Ali Haji.
- Ardi. 2002. Pemanfaatan Makrozoobentos Sebagai Indikator Kualitas Perairan Pesisir. Institut Pertanian Bogor.
- Arfiati, D., Herawati, E. Y., Nanik Retno Buwono, A. F., Winarno, M. S., & Puspitasari, A. W. 2019. Struktur Komunitas Makrozoobentos Pada Ekosistem Lamun di Paciran, Kabupaten Lamongan, Jawa Timur. *Journal of Fisheries and Marine Research*, 3, 1–7.
- Arifin, A., & Jompa, J. 2005. Studi Kondisi dan Potensi Ekosistem Padang Lamun Sebagai Daerah Asuhan Biota Laut. *Jurnal Ilmu-Ilmu Perairan Dan Perikanan Indonesia*, 12 (2), 73–79.
- Bahar, A. 2015. Pedoman Survei Laut. Masagena Press. Makassar.
- Bai'un, nurul hanifah, Riyantini, I., Mulyani, Y., & Zallesa, S. 2021. Keanekaragaman Makrozoobentos Sebagai Indikator Kondisi Perairan di Ekosistem Mangrove Pulau Pari, Kepulauan Seribu. *Journal of Fisheries and Marine Research*, 5 (2), 227–238.
- Barus, T. A. 2001. Pengantar Limnologi Studi Tentang Ekosistem Air Daratan. USU Press. Medan.
- Daruwedho, H., Sasmito, B., & A, F. J. 2016. Analisis Pola Arus Laut Permukaan Perairan Indonesia Dengan Menggunakan Satelit Altimetri JASON-2 Tahun 2010 - 2014. *Jurnal Geodesi Undip*, 5 (2), 1–158.
- Desmawati, I., Adany, A., & Java, A. 2019. Studi Awal Makrozoobentos di Kawasan Wisata Sungai Kalimas, Monumen Kapal Selam Surabaya. *Jurnal Sains Dan Seni ITS*, 8 (2), 19–22.
- Feryatun, F., Hendrarto, B., & Widyorini, N. 2012. Kerapatan dan Distribusi Lamun (Seagrass) Berdasarkan Zona Kegiatan yang Berbeda di Perairan Pulau Pramuka, Kepulauan Seribu. *Journal Of Management Of Aquatic Resources*, 1–7.
- Fredriksen, S., De Backer, A., Boström, C., & Christie, H. 2010. Infauna from *Zostera Marina* L. Meadows in Norway. Differences in Vegetated and Unvegetated Areas. *Marine Biology Research*, 6 (2), 189–200.
- Futra, J., Putra, R. D., & Karlina, I. 2017. Kelimpahan Gastropoda Epifauna di Perairan Senggarang Kota Tanjungpinang Provinsi Kepulauan Riau. *Jurusan Ilmu Kelautan Universitas Maritim Raja Ali Haji*, 1 (1), 1–10.
- Gosari, B. A. J., & Haris, A. 2012. Studi Kerapatan dan Penutupan Jenis Lamun di Kepulauan Spermonde. *Torani (Jurnal Ilmu Kelautan Dan Perikanan)*, 22 (3), 156–162.
- Hamuna, B., Tanjung, R. H. R., Suwito, Maury, H. K., & Alianto. 2018. Kajian Kualitas Air Laut dan Indeks Pencemaran Berdasarkan Parameter Fisika-Kimia di Perairan Distrik Depapre, Jayapura. *Jurnal Ilmu Lingkungan*, 16 (1), 35–43.
- Hasanuddin, R. 2013. Hubungan Antara Kerapatan dan Morfometrik Lamun *Enhalus Acoroides* dengan Substrat dan Nutrien di Pulau Sarappo Lompo Kab. Pangkep. Skripsi. Universitas Hasanuddin.
- Hitalessy, R. B., Leksono, A. S., & Endang Y, H. 2015. Struktur Komunitas dan

- Asosiasi Gastropoda Dengan Tumbuhan Lamun di Perairan Pesisir Lamongan Jawa Timur. *J-PAL*, 6(1), 64–73.
- Hutabarat, S., & Evans, S. M. 2000. Pengantar Oseanografi. Universitas Indonesia Press.
- Indrawan, G. S., Yusup, D, S., & Ulinuha, D. 2016. Asosiasi Makrozoobentos Pada Padang Lamun di Pantai Merta Segara Sanur , Bali. *Jurnal Biologi*, 20 (1), 11–16.
- Ira. 2011. Keterkaitan Padang Lamun Sebagai Pemerangkap dan Penghasil Bahan Organik Dengan Struktur Komunitas Makrozoobentos di Perairan Pulau Barrang Lompo. Tesis. Institut Pertanian Bogor.
- Irmawan, R. N., Zulkifli, H., & Hendri, M. 2010. Struktur Komunitas Makrozoobentos di Estuaria Kuala Sugihan Provinsi Sumatera Selatan. *Maspari Jurnal*, 1, 53–58.
- Izzah, N. A., & Roziaty, E. 2016. Keanekaragaman Makrozoobentos di Pesisir Pantai Desa Panggung Kecamatan Kedung, kabupaten Jepara. *Jurnal Bioeksperimen*, 2 (2), 140–148.
- Krebs, C. J. 1985. Experimental Analysis of Distribution of Abundance. Haper & Row Publisher.
- Kurnia, M., Sudirman, & Nelwan, A. 2015. Studi Pola Kedatangan Ikan Pada Area Penangkapan Bagan Perahu Dengan Teknologi Hidroakustik. *Jurnal Ipteks PSP*, 2 (3), 261–271.
- Lianov, D., Efriyeldi, & Zulkifli. 2019. Density And Coverage of Seagrass On Different Type of Sediment At Pandaratan Beach Tapanuli Tengah Regency North Sumatera Province. *Asian Journal of Aquatic Sciences*, 2 (2), 138–144.
- Litaay, M., Priosambodo, D., Asmus, H., & Saleh, A. 2007. Makrozoobentos Yang Berasosiasi Dengan Padang Lamun di Perairan Pulau Barrang Lompo, Makassar, Sulawesi Selatan. *Jurnal Ilmiah Nasional*, 8 (4), 299–305.
- Machrizal, R., Khairul, & Dimenta, R, H. 2020. Keanekaragaman Makrozoobentos Pada Ekosistem Lamun di Perairan Natal Sumatera Utara. *Fisheries Journal*, 3 (1), 56–67.
- Maretta, G., Widiani, N., & Septiana, N. I. 2019. Keanekaragaman Moluska di Pantai Pasir Putih Lampung Selatan. *Journal of Tropical Biology*, 7 (3), 87–94.
- Meisaroh, Y., Restu, I. W., Ayu, D., & Pebriani, A. 2019. Struktur Komunitas Makrozoobenthos Sebagai Indikator Kualitas Perairan di Pantai Serangan Provinsi Bali. *Journal of Marine and Aquatic Sciences*, 5, 36–43.
- Nybakken, J. W. 1992. Biologi Laut. PT Gramedia. Jakarta.
- Odum, E. P. 1993. Dasar-Dasar Ekologi. Gadjah Mada University Press. Yogyakarta.
- Oli, A. H., Muhlis, & Djau, M, S. (2014). Ekosistem dan Organisme Yang Berasosiasi di Perairan Kwandang Kabupaten Gorontalo Utara. Tesis. Universitas Negeri Gorontalo
- Parorrongan, J. R., Zahida, F., & Yuda, I. P. 2018. Keanekaragaman dan Kelimpahan Gastropoda di Pantai Seger, Lombok Tengah. *Biota*, 3(2), 79–86. <https://doi.org/10.24002/biota.v3i2.1896>
- Patty, S. I., Rizki, M. P., Rifai, H., & Akbar, N. 2019. Kajian Kualitas Air dan Indeks Pencemaran Perairan Laut di Teluk Manado Ditinjau Dari Parameter Fisika-Kimia Air Laut. *Jurnal Ilmu Kelautan Kepulauan*, 2 (2), 1–13.
- Popang, M. 2023. *Kondisi Lamun Pada Tingkat Kekeruhan Perairan yang Berbeda*. Skripsi. Universitas Hasanuddin.

- Pradnyani, G. A. M., Arthana, I. W., & Dewi, A. P. W. K. 2018. Kelimpahan dan Similaritas Gastropoda di Perairan Pantai. *Current Trends in Aquatic Science*, 39, 32–39.
- Pratama, D., Dhafir, F., Ritman, & Bustamin. 2021. Keanekaragaman Jenis Gastropoda di Desa Ampibabo Timur Kecamatan Ampibabo Kabupaten Parigi Moutong dan Pemanfaatannya Sebagai Sumber Belajar. *Jurnal Kreatif Online*, 9 (3), 1–13.
- Purnami, A. T., Sunarto, & Setyono, P. 2010. Study Of Bentos Community Based On Diversity And Similarity Index In Cengklik Dam Boyolali. *Jurnal Ekosains*, 2 (2), 50–65.
- Putro, S. P. 2014. Metode Sampling Penelitian Makrozoobenthos dan Aplikasinya. Graha ilmu. Yogyakarta.
- Rahayu, S. M., Syuhriatin, & Wiryanto. 2018. Keanekaragaman Mangrove di Desa Gedangan, Kecamatan Purwodadi, Kabupaten Purworejo, Jawa Tengah. *Jurnal Enviroscenteeae*, 14 (1), 62–69.
- Rahmawati, S., Irawan, A., Supriyadi, I. H., & Azkab, M. H. 2014. Panduan Monitoring Padang Lamun. Sarana Komunikasi Utama.
- Rijal, A. A. 2022. Hubungan Antara Nutrien Nitrat dan Fosfat Pada Substrat Dengan Kerapatan Lamun di Pulau Pajenekang Pangkep. Skripsi. Universitas Hasanuddin.
- Riniatsih, I., & Kushartono, E. W. 2009. Substrat Dasar dan Parameter Oseanografi Sebagai Penentu Keberadaan Gastropoda dan Bivalvia di Pantai Sluke Kabupaten Rembang. *Ilmu Kelautan : Indonesian Journal of Marine Sciences*, 14 (1), 50–59.
- Rizka, S. H., Wati, M., Dewi, J. M., & Arhas, F. R. 2016. Spesies Ikan Karang di Zona Sublitoral Perairan Rinon Pulo Breuh Aceh Besar. *Jurnal Prosiding Seminar Nasional Biotik*, 9 (7), 64–67.
- Sari, T. A., Atmodjo, W., & Zuraida, R. 2014. Studi Bahan Organik Total (BOT) Sedimen Dasar Laut di Perairan Nabire, Teluk Cendrawasih, Papua. *Jurnal Oseanografi*, 3 (1), 81–86.
- Sibarani, P. M. Y. 2020. Keanekaragaman Makrozoobenthos Hutan Mangrove Desa Selotong Kecamatan Secanggang Kabupaten Langkat Provinsi Sumatera Utara. Fakultas Pertanian Universitas Sumatera Utara.
- Tasabaramo, I. A., Rappe, R. A., & Amran, M. A. 2013. Keberadaan Makrozoobentos Hubungannya Dengan Penutupan Lamun di Perairan Pulau Bonebatang, Makassar. *Torani (Jurnal Ilmu Kelautan Dan Perikanan)*, 23 (1), 21–28.
- Taylor, J. D., & Glover, E. A. 2006. Lucinidae (Bivalvia) – the most diverse group of chemosymbiotic molluscs. *Zoological Journal of the Linnean Society*, 148, 421–438.
- Ulkhag, M. F., Andriyono, S., Azhar, M. H., Kenconoajati, H., Nindarwi, D. D., & Budi, D. S. 2016. Dominansi dan Diversitas Lamun Dan Makrozoobenthos pada Musim Pancaroba di Pantai Bama, Taman Nasional Baluran, Situbondo. *Jurnal Ilmiah Perikanan Dan Kelautan*, 8 (1), 36–44.
- Wahab, I., Kawaroe, M., & Madduppa, H. 2018. Perbandingan Kelimpahan Makrozoobentos di Ekosistem Lamun Pada Saat Bulan Purnama dan Perbani di Pulau Panggang Kepulauan Seribu Jakarta. *Jurnal Ilmu Dan Teknologi Kelautan Tropis*, 10 (1), 217–230.
- Wahikun, M. S. 2016. *Radioaktivitas Pada Perairan Pesisir Cilacap*. Deepublish.

Yogyakarta.

- Wijana, I. M. S., Ernawati, N, M., & Pratiwi, M, A. 2019. Keanekaragaman Lamun dan Makrozoobentos Sebagai Indikator Kondisi Perairan Pantai Sindhu , Sanur , Bali. *Ecotrophic*, 13 ( 2), 238–247.
- Wijayanti, H. 2007. Kajian Kualitas Perairan di Pantai Kota Bandar Lampung Berdasarkan Komunitas Hewan Makrobenthos. Tesis. Universitas Diponegoro.
- Wisnubudi, G., & Wahyuningsih, E. 2012. Kajian Sumberdaya Lamun dan Biota Laut Asosiasinya di Pulau Pramuka, Taman Nasional Laut Kepulauan Seribu. *Jurnal Universitas Nasional*.
- Zuhdi, M. 2019. Buku Ajar Pengantar Geologi. Duta Pustaka Ilmu. Mataram.

## **LAMPIRAN**

1. Jenis yang Ditemukan di Setiap Stasiun

Spesies	Class	Family	Stasiun			
			1	2	3	4
<i>Cerithium rostratum</i>			38	0	1	7
<i>Cerithium columna</i>			5	1	0	0
<i>Cerithium citrinium</i>		<i>Cerithiidae</i>	13	0	0	10
<i>Cerithium sp</i>			1	0	0	2
<i>Cerithium trailli</i>			1	0	0	0
<i>Rhinoclavis aspera</i>			0	0	3	5
<i>Euplica scripta</i>		<i>Columbellidae</i>	134	2	17	28
<i>Trivirostra oryza</i>			1	1	0	4
<i>Palmadusta clandestina</i>			1	1	1	2
<i>Cypraea moneta</i>		<i>Cypraeidae</i>	1	2	5	3
<i>Cypraea clandestina</i>			1	1	0	0
<i>Monetaria annulus</i>			0	0	5	2
<i>Erronea erronea</i>			0	0	0	2
<i>Nassarius albescens</i>		<i>Nassariidae</i>	1	1	3	2
<i>Strombus mutabilis</i>		<i>Strombidae</i>	0	1	0	0
<i>Strombus urceus</i>			1	1	3	3
<i>Pyramidella insularum</i>			1	2	0	1
<i>Longchaeus canaliculatus</i>		<i>Pyramidellidae</i>	4	0	0	0
<i>Otopleura auriscati</i>			1	0	0	0
<i>Otopleura mitralis</i>	Gastropoda		1	0	0	0
<i>Hydroginella caladonica</i>			<i>Marginellidae</i>	0	1	1
<i>Liotina peronii</i>		<i>Cyclostrematidae</i>	0	1	0	2
<i>Nerita albicilla</i>		<i>Neritidae</i>	2	1	3	5
<i>Nerita insculpta</i>	0		1	0	0	
<i>Vexillum exasperatum</i>		<i>Costellariidae</i>	0	1	0	1
<i>Vexillum albofulvum</i>			1	0	0	1
<i>Phasianella solida</i>		<i>Phasianellidae</i>	0	1	0	0
<i>Phasianella aethiopica</i>			0	2	0	2
<i>Tectarius tectumpersicum</i>		<i>Littorinidae</i>	0	1	0	0
<i>Pleuroploca filamentosa</i>		<i>Fascioliariidae</i>	0	1	0	0
<i>Atys naucum</i>		<i>Bullidae</i>	0	1	0	0
<i>Atys cylindricus</i>			12	0	0	1
<i>Eunaticina papilla</i>			0	1	0	0
<i>Polinices tumidus</i>		<i>Naticidae</i>	0	0	0	1
<i>Polinices melanostomus</i>			1	0	1	1
<i>Conus lividus</i>		<i>Conidae</i>	0	1	3	1
<i>Morula granulata</i>		<i>Muricidae</i>	0	0	7	0
<i>Morula margaritcola</i>			1	0	0	2
<i>Calliostoma gemmulatum</i>		<i>Triphoridae</i>	1	0	0	0
<i>Pseudotorinia sp</i>		<i>Architectonicidae</i>	1	0	0	0

<i>Cancilla filaris</i>		<i>Mitridae</i>	0	0	1	1
<i>Monilea belcheri</i>			0	0	0	3
<i>Trochus stellatus</i>		<i>Trochidae</i>	0	0	0	1
<i>Trochus maculatus</i>			0	0	1	1
<hr/>						
<i>Tapes literatus</i>			0	5	1	4
<i>Pitar manillae</i>			0	3	0	0
<i>Lioconcha tigrina</i>			0	2	0	0
<i>Lioconcha castrensis</i>		<i>Veneridae</i>	0	0	1	0
<i>Lioconcha polita</i>			1	0	0	0
<i>Timoclea marica</i>			1	0	5	2
<i>Dosinia histrio</i>			0	0	0	2
<i>Troendleina musculator</i>			1	6	0	2
<i>Codakia orbicularis</i>			1	0	2	0
<i>Codakia bella</i>			1	0	1	1
<i>Codakia tigerina</i>		<i>Lucinidae</i>	1	1	0	1
<i>Loripinus benoisti</i>			1	4	0	7
<i>Codakia interrupta</i>	Bivalvia		0	1	0	1
<i>Pegophysema philippiana</i>			0	2	0	4
<i>Trachycardium rugosum</i>			3	0	1	5
<i>Trachycardium subrugosum</i>		<i>Cardiidae</i>	1	5	0	5
<i>Fragum fragum</i>			0	0	1	3
<i>Barbatia trapezina</i>			0	0	0	1
<i>Anadara antiquata</i>		<i>Arcidae</i>	0	2	1	1
<i>Modiolus micropterus</i>		<i>Mytilidae</i>	5	1	0	3
<i>Tellina sp</i>			3	0	0	0
<i>Tellinella staurella</i>		<i>Tellinidae</i>	1	0	0	1
<i>Tellina cruciate</i>			1	0	0	1
<i>Donax gemmula</i>		<i>Donacidae</i>	1	0	0	0
<i>Atrina pectinata</i>		<i>Pinnidae</i>	0	0	0	2
<hr/>						
<i>Archaster typicus</i>	Asteroidea	<i>Archasteridae</i>	1	0	0	1

## 2. Perhitungan Komposisi Jenis Makrozoobentos

Stasiun 1				
Jenis	Family	Class	ni	Komposisi Jenis (%)
<i>Atys cylindricus</i>	<i>Bullidae</i>		12	4.86
<i>Euplica scripta</i>	<i>Columbellidae</i>		134	54.25
<i>Cerithium rostratum</i>	<i>Cerithiidae</i>		38	15.38
<i>cerithium columna</i>	<i>Cerithiidae</i>		5	2.02
<i>Trivirostra oryza</i>	<i>Cypraeidae</i>		1	0.40
<i>vexillum albofulvum</i>	<i>Costellariidae</i>		1	0.40
<i>Palmadusta clandestina</i>	<i>Cypraeidae</i>		1	0.40
<i>Pyramidella insularum</i>	<i>Pyramidellidae</i>		1	0.40
<i>Cerithium citrinium</i>	<i>Cerithiidae</i>		13	5.26
<i>Polinices melanostomus</i>	<i>Naticidae</i>		1	0.40
<i>Strombus urceus</i>	<i>Strombidae</i>	Gastropoda	2	0.81
<i>Otopleura auriscati</i>	<i>Pyramidellidae</i>		1	0.40
<i>Morula margariticola</i>	<i>Muricidae</i>		1	0.40
<i>Nerita albacilla</i>	<i>Neritidae</i>		2	0.81
<i>Nassarius albescens</i>	<i>Nassariidae</i>		1	0.40
<i>Cerithium sp.</i>	<i>Cerithiidae</i>		1	0.40
<i>Longchaeus canaliculatus</i>	<i>Pyramidellidae</i>		4	1.62
<i>Calliostoma gemmulatum</i>	<i>Triphoridae</i>		1	0.40
<i>otopleura mitralis</i>	<i>Pyramidellidae</i>		1	0.40
<i>Cypraea moneta</i>	<i>Cypraeidae</i>		1	0.40
<i>Cerithium trailli</i>	<i>Cerithiidae</i>	1	0.40	
<i>Pseudotorinia sp.</i>	<i>Architectonicidae</i>	1	0.40	
<i>Modiolus micropterus</i>	<i>Mytilidae</i>		5	2.02
<i>Tellina sp.</i>	<i>Tellinidae</i>		3	1.21
<i>Loripinus benoisti</i>	<i>Lucinidae</i>		1	0.40
<i>Trachycardium rugosum</i>	<i>Cardiidae</i>		3	1.21
<i>Tellina cruciate</i>	<i>Tellinidae</i>		1	0.40
<i>Codakia tigerina</i>	<i>Lucinidae</i>		1	0.40
<i>Donax gemmula</i>	<i>Donacidae</i>	Bivalvia	1	0.40
<i>Tellinella staurella</i>	<i>Tellinidae</i>		1	0.40
<i>Codakia orbicularis</i>	<i>Lucinidae</i>		1	0.40
<i>Lioconcha polita</i>	<i>Veneridae</i>		1	0.40
<i>Codakia bella</i>	<i>Lucinidae</i>		1	0.40
<i>Trachycardium subrugosum</i>	<i>Cardiidae</i>		1	0.40
<i>Timoclea marica</i>	<i>Veneridae</i>		1	0.40
<i>Troendleina masculator</i>	<i>Lucinidae</i>		1	0.40
<i>Archaster typicus</i>	<i>Archasteridae</i>	Asteroidea	1	0.40
<b>Total</b>			247	100.00



**Stasiun 2**

Jenis	Family	Class	ni	Komposisi Jenis (%)	
<i>Cypraea moneta</i>	<i>Cypraeidae</i>		2	3.45	
<i>Cypraea Clandestina</i>	<i>Cypraeidae</i>		1	1.72	
<i>Nassarius albescens</i>	<i>Nassariidae</i>		1	1.72	
<i>Euplica scripta</i>	<i>Columbellidae</i>		2	3.45	
<i>Pyramidella insularum</i>	<i>Pyramidellidae</i>		2	3.45	
<i>Hydroginella caladonica</i>	<i>Marginellidae</i>		1	1.72	
<i>Palmadusta clandestina</i>	<i>Cypraeidae</i>		1	1.72	
<i>Strombus mutabilis</i>	<i>Strombidae</i>		1	1.72	
<i>Liotina peronii</i>	<i>Cyclostrematidae</i>		1	1.72	
<i>cerithium columna</i>	<i>Cerithiidae</i>		1	1.72	
<i>Nerita albacilla</i>	<i>Neritidae</i>	Gastropoda	1	1.72	
<i>Vexillum exasperatum</i>	<i>Costellariidae</i>		1	1.72	
<i>Tectarius tectumpersicum</i>	<i>Littorinidae</i>		1	1.72	
<i>Phasianella aethiopica</i>	<i>Phasianellidae</i>		1	1.72	
<i>Phasianella solida</i>	<i>Phasianellidae</i>		2	3.45	
<i>Pleuroploca filamentosa</i>	<i>Fascioliidae</i>		1	1.72	
<i>Nerita insculpta</i>	<i>Neritidae</i>		1	1.72	
<i>Atys naucum</i>	<i>Bullidae</i>		1	1.72	
<i>Strombus urceus</i>	<i>Strombidae</i>		1	1.72	
<i>Eunaticina papilla</i>	<i>Naticidae</i>		1	1.72	
<i>Trivirostra oryza</i>	<i>Cypraeidae</i>		1	1.72	
<i>Conus lividus</i>	<i>Conidae</i>		1	1.72	
<i>Tapes literatus</i>	<i>Veneridae</i>		5	8.62	
<i>Troendleina masculator</i>	<i>Lucinidae</i>		6	10.34	
<i>Codakia tigerina</i>	<i>Lucinidae</i>		1	1.72	
<i>Lioconcha tigrina</i>	<i>Veneridae</i>		2	3.45	
<i>Loripinus benoisti</i>	<i>Lucinidae</i>		4	6.90	
<i>Trachycardium subrugosum</i>	<i>Cardiidae</i>	Bivalvia	5	8.62	
<i>Pegophysema philippiana</i>	<i>Lucinidae</i>		2	3.45	
<i>Codakia interupta</i>	<i>Lucinidae</i>		1	1.72	
<i>Pitar manillae</i>	<i>Veneridae</i>		3	5.17	
<i>Anadara antiquata</i>	<i>Arcidae</i>		2	3.45	
<i>Modiolus micropterus</i>	<i>Mytilidae</i>		1	1.72	
<b>Total</b>			<b>58</b>	<b>100.00</b>	

**Stasiun 3**

<b>Jenis</b>	<b>Family</b>	<b>Class</b>	<b>ni</b>	<b>Komposisi Jenis (%)</b>
<i>Nerita albacilla</i>	<i>Neritidae</i>		3	4.41
<i>Trochus stellatus</i>	<i>Trochidae</i>		1	1.47
<i>Monetaria annulus</i>	<i>Cypraeidae</i>		5	7.35
<i>Strombus urceus</i>	<i>Strombidae</i>		3	4.41
<i>Euplicia scripta</i>	<i>Columbellidae</i>		17	25.00
<i>Conus lividus</i>	<i>Conidae</i>		3	4.41
<i>Rhinoclavis aspera</i>	<i>Cerithiidae</i>		3	4.41
<i>Hydroginella caladonica</i>	<i>Marginellidae</i>	Gastropoda	1	1.47
<i>Morula granulata</i>	<i>Muricidae</i>		7	10.29
<i>Palmadusta clandestina</i>	<i>Cypraeidae</i>		1	1.47
<i>cerithium rostratum</i>	<i>Cerithiidae</i>		1	1.47
<i>Cypraea moneta</i>	<i>Cypraeidae</i>		5	7.35
<i>Nassarius albescens</i>	<i>Nassariidae</i>		3	4.41
<i>Polinices melanostomus</i>	<i>Naticidae</i>		1	1.47
<i>Cancilla fillaris</i>	<i>Mitridae</i>		1	1.47
<i>Anadara antiquata</i>	<i>Arcidae</i>		1	1.47
<i>Lioconcha castrensis</i>	<i>Veneridae</i>		1	1.47
<i>Tapes literatus</i>	<i>Veneridae</i>		1	1.47
<i>Codakia orbicularis</i>	<i>Lucinidae</i>	Bivalvia	2	2.94
<i>Codakia bella</i>	<i>Lucinidae</i>		1	1.47
<i>Timoclea marica</i>	<i>Veneridae</i>		5	7.35
<i>Fragum fragum</i>	<i>Cardiidae</i>		1	1.47
<i>Trachycardium rugosum</i>	<i>Cardiidae</i>		1	1.47
<b>Total</b>			<b>68</b>	<b>100.00</b>

**Stasiun 4**

<b>Jenis</b>	<b>Family</b>	<b>Class</b>	<b>ni</b>	<b>Komposisi Jenis (%)</b>
<i>Trivirostra oryza</i>	Cypraeidae		4	2.82
<i>Euplica scripta</i>	Columbellidae		28	19.72
<i>Polinices tumidus</i>	Naticidae		1	0.70
<i>cerithium citrinium</i>	Cerithiidae		10	7.04
<i>cerithium rostratum</i>	Cerithiidae		7	4.93
<i>Liotina peronii</i>	Cyclostrematidae		2	1.41
<i>Nassarius albescens</i>	Nassariidae		2	1.41
<i>Cypraea moneta</i>	Cypraeidae		3	2.11
<i>Trochus stellatus</i>	Trochidae		1	0.70
<i>Phasianella solida</i>	Phasianellidae		2	1.41
<i>Cancilla fillaris</i>	Mitridae		1	0.70
<i>Strombus urceus</i>	Strombidae		3	2.11
<i>Palmadusta clandestina</i>	Cypraeidae		2	1.41
<i>Cerithium sp.</i>	Cerithiidae	Gastropoda	2	1.41
<i>Rhinoclavis aspera</i>	Cerithiidae		5	3.52
<i>vexillum albofulvum</i>	Costellariidae		1	0.70
<i>Conus lividus</i>	Conidae		1	0.70
<i>Monilea belcheri</i>	Trochidae		3	2.11
<i>Monetaria annulus</i>	Cypraeidae		2	1.41
<i>Erronea erronea</i>	Cypraeidae		2	1.41
<i>Atys cylindricus</i>	Bullidae		1	0.70
<i>Vexillum exasperatum</i>	Costellariidae		1	0.70
<i>Longchaeus canaliculatus</i>	Pyramidellidae		1	0.70
<i>Hydroginella caladonica</i>	Marginellidae		1	0.70
<i>Morula margariticola</i>	Muricidae		2	1.41
<i>Polinices melanostomus</i>	Naticidae		1	0.70
<i>Nerita albacilla</i>	Neritidae		5	3.52
<i>Trochus maculatus</i>	Trochidae		1	0.70
<i>Loripinus benoisti</i>	Lucinidae		7	4.93
<i>Codakia interupta</i>	Lucinidae		1	0.70
<i>Fragum fragum</i>	Cardiidae		3	2.11
<i>Trachycardium rugosum</i>	Cardiidae		5	3.52
<i>Pegophysema philippiana</i>	Lucinidae		4	2.82
<i>Tapes literatus</i>	Veneridae	Bivalvia	4	2.82
<i>Trachycardium subrugosum</i>	Cardiidae		5	3.52
<i>Dosinia histrio</i>	Veneridae		2	1.41
<i>Tellinella staurella</i>	Tellinidae		1	0.70
<i>Troendleina masculator</i>	Lucinidae		2	1.41
<i>Codakia tigerina</i>	Lucinidae		1	0.70
<i>Atrina pectinata</i>	Pinnidae		2	1.41

<i>Anadara antiquata</i>	<i>Arcidae</i>		1	0.70
<i>Tellina cruciate</i>	<i>Tellinidae</i>		1	0.70
<i>Timoclea marica</i>	<i>Veneridae</i>		2	1.41
<i>Barbatia trapezina</i>	<i>Arcidae</i>		1	0.70
<i>Codakia bella</i>	<i>Lucinidae</i>		1	0.70
<i>Modiolus micropterus</i>	<i>Mytilidae</i>		3	2.11
<i>Archaster tunicus</i>	<i>Archasteridae</i>	Asteroidea	1	0.70
<b>Total</b>			142	100.00

### 3. Perhitungan Kelimpahan Makrozoobentos

Stasiun	Ulangan	Kisi	Jenis	Family	Class	Ind	Total	Kelimpahan (ind/m <sup>2</sup> )
			<i>Codakia tigerina</i>	<i>Lucinidae</i>		1		
			<i>Modiolus micropterus</i>	<i>Mytilidae</i>		3		
			<i>Tellina sp</i>	<i>Tellinidae</i>	Bivalvia	1		
			<i>Trachycardium rugosum</i>	<i>Cardiidae</i>		2		
			<i>Tellina cruciate</i>	<i>Tellinidae</i>		1		
			<i>Euplica scripta</i>	<i>Columbellidae</i>		11		
			<i>Pyramidella insularum</i>	<i>Pyramidellidae</i>		1		
		1	<i>Palmadusta clandestina</i>	<i>Cypraeidae</i>		1	35	
			<i>Cerithium columna</i>	<i>Cerithiidae</i>		1		
			<i>Nerita albicilla</i>	<i>Neritidae</i>		1		
			<i>Trivirostra oryza</i>	<i>Cypraeidae</i>	Gastropoda	1		
			<i>Atys cylindricus</i>	<i>Bullidae</i>		3		
1	1		<i>Cerithium rostratum</i>	<i>Cerithiidae</i>		2		128
			<i>Vexillum albofulvum</i>	<i>Costellariidae</i>		1		11.636
			<i>Cerithium citrinium</i>	<i>Cerithiidae</i>		4		
			<i>Otopleura auriscati</i>	<i>Pyramidellidae</i>		1		
			<i>Loripinus benoisti</i>	<i>Lucinidae</i>		1		
			<i>Modiolus micropterus</i>	<i>Mytilidae</i>	Bivalvia	2		
			<i>Tellina sp</i>	<i>Tellinidae</i>		1		
			<i>Trachycardium rugosum</i>	<i>Cardiidae</i>		1		
		2	<i>Nassarius albescens</i>	<i>Nassariidae</i>		1	29	
			<i>Euplica scripta</i>	<i>Columbellidae</i>		10		
			<i>Cerithium columna</i>	<i>Cerithiidae</i>	Gastropoda	1		
			<i>Nerita albicilla</i>	<i>Neritidae</i>		1		
			<i>Strombus urceus</i>	<i>Strombidae</i>		1		
			<i>Atys cylindricus</i>	<i>Bullidae</i>		2		

		<i>Cerithium rostratum</i>	<i>Cerithiidae</i>		3			
		<i>Cerithium citrinium</i>	<i>Cerithiidae</i>		3			
		<i>Polinices melanostomus</i>	<i>Naticidae</i>		1			
		<i>Morula margariticola</i>	<i>Muricidae</i>		1			
		<i>Troendleina musculator</i>	<i>Lucinidae</i>		1			
		<i>Tellina sp</i>	<i>Tellinidae</i>		1			
		<i>Tellinella staurella</i>	<i>Tellinidae</i>	Bivalvia	1			
		<i>Codakia orbicularis</i>	<i>Lucinidae</i>		1			
		<i>Timoclea marica</i>	<i>Veneridae</i>		1			
	1	<i>Euplica scripta</i>	<i>Columbellidae</i>		9		40	
		<i>Cerithium columna</i>	<i>Cerithiidae</i>		2			
		<i>Atys cylindricus</i>	<i>Bullidae</i>		4			
		<i>Cerithium rostratum</i>	<i>Cerithiidae</i>	Gastropoda	15			
		<i>Cerithium citrinium</i>	<i>Cerithiidae</i>		2			
		<i>Longchaeus canaliculatus</i>	<i>Pyramidellidae</i>		2			
		<i>Calliostoma gemmulatum</i>	<i>Triphoridae</i>		1			
	2	<i>Trachycardium subrugosum</i>	<i>Cardiidae</i>		1	160	14.545	
		<i>Donax gemmula</i>	<i>Donacidae</i>	Bivalvia	1			
		<i>Lioconcha polita</i>	<i>Veneridae</i>		1			
		<i>Codakia bella</i>	<i>Lucinidae</i>		1			
		<i>Cypraea moneta</i>	<i>Cypraeidae</i>		1			
		<i>Euplica scripta</i>	<i>Columbellidae</i>		10			
	2	<i>Cerithium columna</i>	<i>Cerithiidae</i>		1		40	
		<i>Atys cylindricus</i>	<i>Bullidae</i>		3			
		<i>Cerithium rostratum</i>	<i>Cerithiidae</i>	Gastropoda	15			
		<i>Cerithium citrinium</i>	<i>Cerithiidae</i>		2			
		<i>Cerithium sp</i>	<i>Cerithiidae</i>		1			
		<i>Longchaeus canaliculatus</i>	<i>Pyramidellidae</i>		2			
		<i>Otopleura mitralis</i>	<i>Pyramidellidae</i>		1			
3	1	<i>Euplica scripta</i>	<i>Columbellidae</i>	Gastropoda	47	52	206	18.727

			<i>Strombus urceus</i>	<i>Strombidae</i>		1		
			<i>Cerithium rostratum</i>	<i>Cerithiidae</i>		2		
			<i>Cerithium citrinium</i>	<i>Cerithiidae</i>		1		
			<i>Cerithium trailli</i>	<i>Cerithiidae</i>		1		
			<i>Euplica scripta</i>	<i>Columbellidae</i>		47		
			<i>Cerithium rostratum</i>	<i>Cerithiidae</i>	Gastropoda	1		
	2		<i>Cerithium citrinium</i>	<i>Cerithiidae</i>		1	51	
			<i>Pseudotorinia sp</i>	<i>Architectonicidae</i>		1		
			<i>Archaster typicus</i>	<i>Archasteridae</i>	Asteroidea	1		

Stasiun	Ulangan	Kisi	Jenis	Family	Class	Ind	Total	Kelimpahan (ind/m <sup>2</sup> )	
			<i>Tapes literatus</i>	<i>Veneridae</i>		1			
			<i>Troendleina musculator</i>	<i>Lucinidae</i>	Bivalvia	1			
			<i>Lioconcha tigrina</i>	<i>Veneridae</i>		1			
		1	<i>Loripinus benoisti</i>	<i>Lucinidae</i>		1	8		
			<i>Cypraea moneta</i>	<i>Cypraeidae</i>		1			
			<i>Nassarius albescens</i>	<i>Nassariidae</i>	Gastropoda	1			
			<i>Pyramidella insularum</i>	<i>Pyramidellidae</i>		1			
	1		<i>Hydroginella caladonica</i>	<i>Marginellidae</i>		1	32	16.000	
2			<i>Trachycardium subrugosum</i>	<i>Cardiidae</i>		2			
			<i>Pitar manillae</i>	<i>Veneridae</i>	Bivalvia	1			
			<i>Codakia tigerina</i>	<i>Lucinidae</i>		1			
		2	<i>Cypraea clandestina</i>	<i>Cypraeidae</i>		1	8		
			<i>Euplica scripta</i>	<i>Columbellidae</i>	Gastropoda	1			
			<i>Palmadusta clandestina</i>	<i>Cypraeidae</i>		1			
			<i>Strombus mutabilis</i>	<i>Strombidae</i>		1			
	2	1	<i>Tapes literatus</i>	<i>Veneridae</i>	Bivalvia	2	9	32	10.667
			<i>Troendleina musculator</i>	<i>Lucinidae</i>		2			

	<i>Pegophysema philippiana</i>	Lucinidae		1		
	<i>Codakia interupta</i>	Lucinidae		1		
	<i>Liotina peronii</i>	Cyclostrematidae		1		
	<i>Nerita albacilla</i>	Neritidae	Gastropoda	1		
	<i>Tectarius tectumpersicum</i>	Littorinidae		1		
	<i>Trachycardium subrugosum</i>	Cardiidae		1		
	<i>Pitar manillae</i>	Veneridae	Bivalvia	1		
	<i>Loripinus benoisti</i>	Lucinidae		1		
2	<i>Euplica scripta</i>	Columbellidae		1	7	
	<i>Cerithium columna</i>	Cerithiidae	Gastropoda	1		
	<i>Vexillum exasperatum</i>	Costellariidae		1		
	<i>Phasianella aethiopica</i>	Phasianellidae		1		
	<i>Tapes literatus</i>	Veneridae		1		
	<i>Trachycardium subrugosum</i>	Cardiidae		1		
	<i>Pegophysema philippiana</i>	Lucinidae		1		
	<i>Lioconcha tigrina</i>	Veneridae	Bivalvia	1		
	<i>Troendleina musculator</i>	Lucinidae		2		
1	<i>Anadara antiquata</i>	Arcidae		1	13	
	<i>Loripinus benoisti</i>	Lucinidae		1		
	<i>Pyramidella insularum</i>	Pyramidellidae		1		
3	<i>Phasianella solida</i>	Phasianellidae	Gastropoda	2	52	13.000
	<i>Strombus urceus</i>	Strombidae		1		
	<i>Trivirostra oryza</i>	Cypraeidae		1		
	<i>Troendleina musculator</i>	Lucinidae		1		
	<i>Tapes literatus</i>	Veneridae		1		
	<i>Trachycardium subrugosum</i>	Cardiidae		1		
2	<i>Modiolus micropterus</i>	Mytilidae	Bivalvia	1	13	
	<i>Anadara antiquata</i>	Arcidae		1		
	<i>Pitar manillae</i>	Veneridae		1		
	<i>Loripinus benoisti</i>	Lucinidae		1		



<i>Nerita insculpta</i>	<i>Neritidae</i>		1
<i>Cypraea moneta</i>	<i>Cypraeidae</i>		1
<i>Pleuroploca filamentosa</i>	<i>Fascioliariidae</i>	Gastropoda	1
<i>Atys naucum</i>	<i>Bullidae</i>		1
<i>Eunaticina papilla</i>	<i>Naticidae</i>		1
<i>Conus lividus</i>	<i>Conidae</i>		1

Stasiun	Ulangan	Kisi	Jenis	Family	Class	Ind	Total	Kelimpahan (ind/m <sup>2</sup> )		
3	1	1	<i>Tapes literatus</i>	<i>Veneridae</i>	Bivalvia	1	12	48	9.600	
			<i>Lioconcha castrensis</i>	<i>Veneridae</i>		1				
			<i>Euplica scripta</i>	<i>Columbellidae</i>	7					
			<i>Nerita albacilla</i>	<i>Neritidae</i>	Gastropoda	2				
			<i>Strombus urceus</i>	<i>Strombidae</i>		1				
		<i>Anadara antiquata</i>	<i>Arcidae</i>	Bivalvia	1					
		2	2	<i>Euplica scripta</i>	<i>Columbellidae</i>		7			12
				<i>Nerita albacilla</i>	<i>Neritidae</i>	Gastropoda	1			
				<i>Trochus stellatus</i>	<i>Trochidae</i>		1			
				<i>Monetaria annulus</i>	<i>Cypraeidae</i>	2				
	<i>Codakia orbicularis</i>			<i>Lucinidae</i>	Bivalvia	1				
	<i>Timoclea marica</i>		<i>Veneridae</i>	1						
	2		1	<i>Cypraea moneta</i>	<i>Cypraeidae</i>		1	9	40	8.000
				<i>Hydroginella caladonica</i>	<i>Marginellidae</i>		1			
				<i>Strombus urceus</i>	<i>Strombidae</i>	Gastropoda	1			
				<i>Rhinoclavis aspera</i>	<i>Cerithiidae</i>		2			
		<i>Monetaria annulus</i>	<i>Cypraeidae</i>		1					
		<i>Morula granulata</i>	<i>Muricidae</i>		1					
		2	<i>Codakia bella</i>	<i>Lucinidae</i>	Bivalvia	1	11			
			<i>Fragum fragum</i>	<i>Cardiidae</i>		1				

		<i>Euplica scripta</i>	Columbellidae		3		
		<i>Palmadusta clandestina</i>	Cypraeidae		1		
		<i>Conus lividus</i>	Conidae	Gastropoda	3		
		<i>Cerithium rostratum</i>	Cerithiidae		1		
		<i>Monetaria annulus</i>	Cypraeidae		1		
		<i>Trachycardium rugosum</i>	Cardiidae	Bivalvia	1		
		<i>Timoclea marica</i>	Veneridae		2		
		<i>Cypraea moneta</i>	Cypraeidae		2		
	1	<i>Nassarius albescens</i>	Nassariidae		2	12	
		<i>Strombus urceus</i>	Strombidae	Gastropoda	1		
		<i>Rhinoclavis aspera</i>	Cerithiidae		1		
	3	<i>Morula granulata</i>	Muricidae		3	46	9.200
		<i>Codakia orbicularis</i>	Lucinidae	Bivalvia	1		
		<i>Timoclea marica</i>	Veneridae		2		
		<i>Cypraea moneta</i>	Cypraeidae		2		
	2	<i>Nassarius albescens</i>	Nassariidae		1	11	
		<i>Polinices melanostomus</i>	Naticidae	Gastropoda	1		
		<i>Monetaria annulus</i>	Cypraeidae		1		
		<i>Morula granulata</i>	Muricidae		3		

Stasiun	Ulangan	Kisi	Jenis	Family	Class	Ind	Total	Kelimpahan (ind/2m2)
			<i>Pegophysema philippiana</i>	Lucinidae		1		
			<i>Loripinus benoisti</i>	Lucinidae	Bivalvia	2		
			<i>Codakia interupta</i>	Lucinidae		1		
4	1	1	<i>Cypraea moneta</i>	Cypraeidae		1	25	94 10.444
			<i>Nassarius albescens</i>	Nassariidae	Gastropoda	1		
			<i>Euplica scripta</i>	Columbellidae		5		
			<i>Liotina peronii</i>	Cyclostrematidae		2		

		<i>Strombus urceus</i>	<i>Strombidae</i>		1			
		<i>Cerithium rostratum</i>	<i>Cerithiidae</i>		5			
		<i>Cerithium citrinium</i>	<i>Cerithiidae</i>		4			
		<i>Polinices tumidus</i>	<i>Naticidae</i>		1			
		<i>Cancilla fillaris</i>	<i>Mitridae</i>		1			
		<i>Loripinus benoisti</i>	<i>Lucinidae</i>		3			
		<i>Trachycardium rugosum</i>	<i>Cardiidae</i>	Bivalvia	2			
		<i>Fragum fragum</i>	<i>Cardiidae</i>		1			
		<i>Cypraea moneta</i>	<i>Cypraeidae</i>		1			
		<i>Nassarius albescens</i>	<i>Nassariidae</i>		1			
2		<i>Euplica scripta</i>	<i>Columbellidae</i>		4	22		
		<i>Phasianella solida</i>	<i>Phasianellidae</i>	Gastropoda	1			
		<i>Trivirostra oryza</i>	<i>Cypraeidae</i>		3			
		<i>Cerithium citrinium</i>	<i>Cerithiidae</i>		4			
		<i>Trochus stellatus</i>	<i>Trochidae</i>		1			
		<i>Archaster tunicus</i>	<i>Archasteridae</i>	Asteroidea	1			
		<i>Tapes literatus</i>	<i>Veneridae</i>		3			
		<i>Trachycardium subrugosum</i>	<i>Cardiidae</i>		2			
		<i>Codakia tigerina</i>	<i>Lucinidae</i>	Bivalvia	1			
		<i>Trachycardium rugosum</i>	<i>Cardiidae</i>		1			
		<i>Fragum fragum</i>	<i>Cardiidae</i>		1			
		<i>Atrina pectinata</i>	<i>Pinnidae</i>		1			
2	1	<i>Cypraea moneta</i>	<i>Cypraeidae</i>		1	27	114	10.364
		<i>Euplica scripta</i>	<i>Columbellidae</i>		7			
		<i>Phasianella solida</i>	<i>Phasianellidae</i>		1			
		<i>Trivirostra oryza</i>	<i>Cypraeidae</i>	Gastropoda	1			
		<i>Atys cylindricus</i>	<i>Bullidae</i>		1			
		<i>Vexillum albofulvum</i>	<i>Costellariidae</i>		1			
		<i>Cerithium sp.</i>	<i>Cerithiidae</i>		2			
		<i>Rhinoclavis aspera</i>	<i>Cerithiidae</i>		2			

	<i>Monetaria annulus</i>	<i>Cypraeidae</i>		2		
	<i>Troendleina masculator</i>	<i>Lucinidae</i>		1		
	<i>Pegophysema philippiana</i>	<i>Lucinidae</i>		3		
	<i>Loripinus benoisti</i>	<i>Lucinidae</i>	Bivalvia	2		
	<i>Tellinella staurella</i>	<i>Tellinidae</i>		1		
	<i>Dosinia histrio</i>	<i>Veneridae</i>		2		
	<i>Euplica scripta</i>	<i>Columbellidae</i>		7		
2	<i>Palmadusta clandestina</i>	<i>Cypraeidae</i>		1	30	
	<i>Vexillum exasperatum</i>	<i>Costellariidae</i>		1		
	<i>Strombus urceus</i>	<i>Strombidae</i>		2		
	<i>Conus lividus</i>	<i>Conidae</i>	Gastropoda	1		
	<i>Cerithium rostratum</i>	<i>Cerithiidae</i>		2		
	<i>Cerithium citrinium</i>	<i>Cerithiidae</i>		2		
	<i>Monilea belcheri</i>	<i>Trochidae</i>		3		
	<i>Erronea erronea</i>	<i>Cypraeidae</i>		2		
	<i>Tapes literatus</i>	<i>Veneridae</i>		1		
	<i>Trachycardium subrugosum</i>	<i>Cardiidae</i>		3		
	<i>Anadara antiquata</i>	<i>Arcidae</i>	Bivalvia	1		
	<i>Tellina cruciate</i>	<i>Tellinidae</i>		1		
	<i>Timoclea marica</i>	<i>Veneridae</i>		2		
1	<i>Atrina pectinata</i>	<i>Pinnidae</i>		1	22	
	<i>Euplica scripta</i>	<i>Columbellidae</i>		2		
3	<i>Hydroginella caladonica</i>	<i>Marginellidae</i>		1	76	10.857
	<i>Nerita albacilla</i>	<i>Neritidae</i>	Gastropoda	5		
	<i>Morula margariticola</i>	<i>Muricidae</i>		2		
	<i>Rhinoclavis aspera</i>	<i>Cerithiidae</i>		3		
	<i>Troendleina masculator</i>	<i>Lucinidae</i>		1		
2	<i>Modiolus micropterus</i>	<i>Mytilidae</i>	Bivalvia	3	16	
	<i>Trachycardium rugosum</i>	<i>Cardiidae</i>		2		
	<i>Codakia bella</i>	<i>Lucinidae</i>		1		

<i>Fragum fragum</i>	<i>Cardiidae</i>		1
<i>Barbatia trapezina</i>	<i>Arcidae</i>		1
<i>Euplica scripta</i>	<i>Columbellidae</i>		3
<i>Palmadusta clandestina</i>	<i>Cypraeidae</i>		1
<i>Polinices melanostomus</i>	<i>Naticidae</i>	Gastropoda	1
<i>Longchaeus canaliculatus</i>	<i>Pyramidellidae</i>		1
<i>Trochus maculatus</i>	<i>Trochidae</i>		1

---

#### 4. Perhitungan Indeks Ekologi

Stasiun	Ulangan	Jenis	Family	Class	ni	N	ni/N	ln ni/N	$\sum ni/N$ (ln ni/N)	H'	S	LnS	E	ni/N <sup>2</sup>	C
		<i>Euplica scripta</i>	<i>Columbellidae</i>		21		0.328	-1.114	-0.366					0.108	
		<i>Pyramidella insularum</i>	<i>Pyramidellidae</i>		1		0.016	-4.159	-0.065					0.000	
		<i>Palmadusta clandestina</i>	<i>Cypraeidae</i>		1		0.016	-4.159	-0.065					0.000	
		<i>Cerithium columna</i>	<i>Cerithiidae</i>		2		0.031	-3.466	-0.108					0.001	
		<i>Nerita albicilla</i>	<i>Neritidae</i>		2		0.031	-3.466	-0.108					0.001	
		<i>Trivirostra oryza</i>	<i>Cypraeidae</i>		1		0.016	-4.159	-0.065					0.000	
		<i>Atys cylindricus</i>	<i>Bullidae</i>		5		0.078	-2.549	-0.199					0.006	
		<i>Cerithium rostratum</i>	<i>Cerithiidae</i>	Gastropoda	5		0.078	-2.549	-0.199					0.006	
		<i>Vexillum albofulvum</i>	<i>Costellariidae</i>		1		0.016	-4.159	-0.065					0.000	
		<i>Cerithium citrinium</i>	<i>Cerithiidae</i>		7		0.109	-2.213	-0.242					0.012	
	1	<i>Otopleura auriscati</i>	<i>Pyramidellidae</i>		1	64	0.016	-4.159	-0.065	2.453	21	3.045	0.806	0.000	0.146
		<i>Nassarius albescens</i>	<i>Nassariidae</i>		1		0.016	-4.159	-0.065					0.000	
		<i>Strombus urceus</i>	<i>Strombidae</i>		1		0.016	-4.159	-0.065					0.000	
		<i>Polinices melanostomus</i>	<i>Naticidae</i>		1		0.016	-4.159	-0.065					0.000	
		<i>Morula margariticola</i>	<i>Muricidae</i>		1		0.016	-4.159	-0.065					0.000	
		<i>Codakia tigerina</i>	<i>Lucinidae</i>		1		0.016	-4.159	-0.065					0.000	
		<i>Modiolus micropterus</i>	<i>Mytilidae</i>		5		0.078	-2.549	-0.199					0.006	
		<i>Tellina sp</i>	<i>Tellinidae</i>	Bivalvia	2		0.031	-3.466	-0.108					0.001	
		<i>Trachycardium rugosum</i>	<i>Cardiidae</i>		3		0.047	-3.060	-0.143					0.002	
		<i>Tellina cruciate</i>	<i>Tellinidae</i>		1		0.016	-4.159	-0.065					0.000	
		<i>Loripinus benoisti</i>	<i>Lucinidae</i>		1		0.016	-4.159	-0.065					0.000	
		<i>Euplica scripta</i>	<i>Columbellidae</i>		19		0.238	-1.438	-0.341					0.056	
	2	<i>Cerithium columna</i>	<i>Cerithiidae</i>	Gastropoda	3	80	0.038	-3.283	-0.123	2.057	19	2.944	0.699	0.001	0.213
		<i>Atys cylindricus</i>	<i>Bullidae</i>		7		0.088	-2.436	-0.213					0.008	
		<i>Cerithium rostratum</i>	<i>Cerithiidae</i>		30		0.375	-0.981	-0.368					0.141	

	<i>Cerithium citrinium</i>	<i>Cerithiidae</i>		4	0.050	-2.996	-0.150							0.003	
	<i>Longchaeus canaliculatus</i>	<i>Pyramidellidae</i>		4	0.050	-2.996	-0.150							0.003	
	<i>Calliostoma gemmulatum</i>	<i>Triphoridae</i>		1	0.013	-4.382	-0.055							0.000	
	<i>Cypraea moneta</i>	<i>Cypraeidae</i>		1	0.013	-4.382	-0.055							0.000	
	<i>Cerithium sp</i>	<i>Cerithiidae</i>		1	0.013	-4.382	-0.055							0.000	
	<i>Otopleura mitralis</i>	<i>Pyramidellidae</i>		1	0.013	-4.382	-0.055							0.000	
	<i>Troendleina musculator</i>	<i>Lucinidae</i>		1	0.013	-4.382	-0.055							0.000	
	<i>Tellina sp</i>	<i>Tellinidae</i>		1	0.013	-4.382	-0.055							0.000	
	<i>Tellinella staurella</i>	<i>Tellinidae</i>		1	0.013	-4.382	-0.055							0.000	
	<i>Codakia orbicularis</i>	<i>Lucinidae</i>		1	0.013	-4.382	-0.055							0.000	
	<i>Timoclea marica</i>	<i>Veneridae</i>	Bivalvia	1	0.013	-4.382	-0.055							0.000	
	<i>Trachycardium subrugosum</i>	<i>Cardiidae</i>		1	0.013	-4.382	-0.055							0.000	
	<i>Donax gemmula</i>	<i>Donacidae</i>		1	0.013	-4.382	-0.055							0.000	
	<i>Lioconcha polita</i>	<i>Veneridae</i>		1	0.013	-4.382	-0.055							0.000	
	<i>Codakia bella</i>	<i>Lucinidae</i>		1	0.013	-4.382	-0.055							0.000	
	<i>Euplica scripta</i>	<i>Columbellidae</i>		94	0.913	-0.091	-0.083							0.833	
	<i>Strombus urceus</i>	<i>Strombidae</i>		1	0.010	-4.635	-0.045							0.000	
	<i>Cerithium rostratum</i>	<i>Cerithiidae</i>	Gastropoda	3	0.029	-3.536	-0.103							0.001	
3	<i>Cerithium citrinium</i>	<i>Cerithiidae</i>		2	103	0.019	-3.942	-0.077	0.443	7	1.946	0.228		0.000	0.834
	<i>Cerithium trailli</i>	<i>Cerithiidae</i>		1	0.010	-4.635	-0.045							0.000	
	<i>Pseudotorinia sp</i>	<i>Architectonicidae</i>		1	0.010	-4.635	-0.045							0.000	
	<i>Archaster typicus</i>	<i>Archasteridae</i>	Asteroidea	1	0.010	-4.635	-0.045							0.000	

Stasiun	Ulangan	Jenis	Family	Class	ni	N	ni/N	ln ni/N	∑ ni/N (ln ni/N)	H'	S	LnS	E	ni/N2	C
		<i>Cypraea moneta</i>	<i>Cypraeidae</i>		1		0.063	-2.773	-0.173					0.004	
2	1	<i>Nassarius albescens</i>	<i>Nassariidae</i>	Gastropoda	1	16	0.063	-2.773	-0.173	2.686	15	2.708	0.992	0.004	0.070
		<i>Pyramidella insularum</i>	<i>Pyramidellidae</i>		1		0.063	-2.773	-0.173					0.004	

	<i>Hydroginella caladonica</i>	<i>Marginellidae</i>		1	0.063	-2.773	-0.173				0.004		
	<i>Cypraea clandestina</i>	<i>Cypraeidae</i>		1	0.063	-2.773	-0.173				0.004		
	<i>Euplica scripta</i>	<i>Columbellidae</i>		1	0.063	-2.773	-0.173				0.004		
	<i>Palmadusta clandestina</i>	<i>Cypraeidae</i>		1	0.063	-2.773	-0.173				0.004		
	<i>Strombus mutabilis</i>	<i>Strombidae</i>		1	0.063	-2.773	-0.173				0.004		
	<i>Tapes literatus</i>	<i>Veneridae</i>		1	0.063	-2.773	-0.173				0.004		
	<i>Troendleina musculator</i>	<i>Lucinidae</i>		1	0.063	-2.773	-0.173				0.004		
	<i>Lioconcha tigrina</i>	<i>Veneridae</i>		1	0.063	-2.773	-0.173				0.004		
	<i>Loripinus benoisti</i>	<i>Lucinidae</i>	Bivalvia	1	0.063	-2.773	-0.173				0.004		
	<i>Trachycardium subrugosum</i>	<i>Cardiidae</i>		2	0.125	-2.079	-0.260				0.016		
	<i>Pitar manillae</i>	<i>Veneridae</i>		1	0.063	-2.773	-0.173				0.004		
	<i>Codakia tigerina</i>	<i>Lucinidae</i>		1	0.063	-2.773	-0.173				0.004		
	<i>Liotina peronii</i>	<i>Cyclostrematidae</i>		1	0.063	-2.773	-0.173				0.004		
	<i>Nerita albacilla</i>	<i>Neritidae</i>		1	0.063	-2.773	-0.173				0.004		
	<i>Tectarius tectumpersicum</i>	<i>Littorinidae</i>		1	0.063	-2.773	-0.173				0.004		
	<i>Euplica scripta</i>	<i>Columbellidae</i>	Gastropoda	1	0.063	-2.773	-0.173				0.004		
	<i>Cerithium columna</i>	<i>Cerithiidae</i>		1	0.063	-2.773	-0.173				0.004		
	<i>Vexillum exasperatum</i>	<i>Costellariidae</i>		1	0.063	-2.773	-0.173				0.004		
2	<i>Phasianella aethiopica</i>	<i>Phasianellidae</i>		1	0.063	-2.773	-0.173	2.599	14	2.639	0.985	0.004	0.078
	<i>Tapes literatus</i>	<i>Veneridae</i>		2	0.125	-2.079	-0.260				0.016		
	<i>Troendleina musculator</i>	<i>Lucinidae</i>		2	0.125	-2.079	-0.260				0.016		
	<i>Pegophysema philippiana</i>	<i>Lucinidae</i>		1	0.063	-2.773	-0.173				0.004		
	<i>Codakia interupta</i>	<i>Lucinidae</i>	Bivalvia	1	0.063	-2.773	-0.173				0.004		
	<i>Trachycardium subrugosum</i>	<i>Cardiidae</i>		1	0.063	-2.773	-0.173				0.004		
	<i>Pitar manillae</i>	<i>Veneridae</i>		1	0.063	-2.773	-0.173				0.004		
	<i>Loripinus benoisti</i>	<i>Lucinidae</i>		1	0.063	-2.773	-0.173				0.004		
3	<i>Pyramidella insularum</i>	<i>Pyramidellidae</i>	Gastropoda	1	0.038	-3.258	-0.125	2.865	19	2.944	0.973	0.001	0.062
	<i>Phasianella solida</i>	<i>Phasianellidae</i>		2	0.077	-2.565	-0.197				0.006		



<i>Strombus urceus</i>	<i>Strombidae</i>		1	0.038	-3.258	-0.125		0.001
<i>Trivirostra oryza</i>	<i>Cypraeidae</i>		1	0.038	-3.258	-0.125		0.001
<i>Nerita insculpta</i>	<i>Neritidae</i>		1	0.038	-3.258	-0.125		0.001
<i>Cypraea moneta</i>	<i>Cypraeidae</i>		1	0.038	-3.258	-0.125		0.001
<i>Pleuroploca filamentosa</i>	<i>Fascioliariidae</i>		1	0.038	-3.258	-0.125		0.001
<i>Atys naucum</i>	<i>Bullidae</i>		1	0.038	-3.258	-0.125		0.001
<i>Eunaticina papilla</i>	<i>Naticidae</i>		1	0.038	-3.258	-0.125		0.001
<i>Conus lividus</i>	<i>Conidae</i>		1	0.038	-3.258	-0.125		0.001
<i>Tapes literatus</i>	<i>Veneridae</i>		2	0.077	-2.565	-0.197		0.006
<i>Trachycardium subrugosum</i>	<i>Cardiidae</i>		2	0.077	-2.565	-0.197		0.006
<i>Pegophysema philippiana</i>	<i>Lucinidae</i>		1	0.038	-3.258	-0.125		0.001
<i>Lioconcha tigrina</i>	<i>Veneridae</i>		1	0.038	-3.258	-0.125		0.001
<i>Troendleina musculator</i>	<i>Lucinidae</i>	Bivalvia	3	0.115	-2.159	-0.249		0.013
<i>Anadara antiquata</i>	<i>Arcidae</i>		2	0.077	-2.565	-0.197		0.006
<i>Loripinus benoisti</i>	<i>Lucinidae</i>		2	0.077	-2.565	-0.197		0.006
<i>Modiolus micropterus</i>	<i>Mytilidae</i>		1	0.038	-3.258	-0.125		0.001
<i>Pitar manillae</i>	<i>Veneridae</i>		1	0.038	-3.258	-0.125		0.001

Stasiun	Ulangan	Jenis	Family	Class	ni	N	ni/N	ln ni/N	$\sum ni/N$ (ln ni/N)	H'	S	LnS	E	ni/N <sup>2</sup>	C
		<i>Euplica scripta</i>	<i>Columbellidae</i>		14		0.583	-0.539	-0.314					0.340	
		<i>Nerita albacilla</i>	<i>Neritidae</i>		3		0.125	-2.079	-0.260					0.016	
		<i>Strombus urceus</i>	<i>Strombidae</i>	Gastropoda	1		0.042	-3.178	-0.132					0.002	
3	1	<i>Trochus stellatus</i>	<i>Trochidae</i>		1	24	0.042	-3.178	-0.132	1.444	8	2.079	0.694	0.002	0.372
		<i>Monetaria annulus</i>	<i>Cypraeidae</i>		2		0.083	-2.485	-0.207					0.007	
		<i>Tapes literatus</i>	<i>Veneridae</i>		1		0.042	-3.178	-0.132					0.002	
		<i>Lioconcha castrensis</i>	<i>Veneridae</i>	Bivalvia	1		0.042	-3.178	-0.132					0.002	
		<i>Anadara antiquata</i>	<i>Arcidae</i>		1		0.042	-3.178	-0.132					0.002	

	<i>Cypraea moneta</i>	<i>Cypraeidae</i>		1	0.050	-2.996	-0.150				0.003		
	<i>Hydroginella caladonica</i>	<i>Marginellidae</i>		1	0.050	-2.996	-0.150				0.003		
	<i>Strombus urceus</i>	<i>Strombidae</i>		1	0.050	-2.996	-0.150				0.003		
	<i>Rhinoclavis aspera</i>	<i>Cerithiidae</i>		2	0.100	-2.303	-0.230				0.010		
	<i>Monetaria annulus</i>	<i>Cypraeidae</i>	Gastropoda	2	0.100	-2.303	-0.230				0.010		
	<i>Morula granulata</i>	<i>Muricidae</i>		1	0.050	-2.996	-0.150				0.003		
2	<i>Euplica scripta</i>	<i>Columbellidae</i>		3	0.150	-1.897	-0.285	2.528	14	2.639	0.958	0.023	0.090
	<i>Palmadusta clandestina</i>	<i>Cypraeidae</i>		1	0.050	-2.996	-0.150				0.003		
	<i>Conus lividus</i>	<i>Conidae</i>		3	0.150	-1.897	-0.285				0.023		
	<i>Cerithium rostratum</i>	<i>Cerithiidae</i>		1	0.050	-2.996	-0.150				0.003		
	<i>Codakia orbicularis</i>	<i>Lucinidae</i>		1	0.050	-2.996	-0.150				0.003		
	<i>Timoclea marica</i>	<i>Veneridae</i>	Bivalvia	1	0.050	-2.996	-0.150				0.003		
	<i>Codakia bella</i>	<i>Lucinidae</i>		1	0.050	-2.996	-0.150				0.003		
	<i>Fragum fragum</i>	<i>Cardiidae</i>		1	0.050	-2.996	-0.150				0.003		
	<i>Cypraea moneta</i>	<i>Cypraeidae</i>		4	0.167	-1.792	-0.299				0.028		
	<i>Nassarius albescens</i>	<i>Nassariidae</i>		4	0.167	-1.792	-0.299				0.028		
	<i>Strombus urceus</i>	<i>Strombidae</i>		1	0.042	-3.178	-0.132				0.002		
	<i>Rhinoclavis aspera</i>	<i>Cerithiidae</i>	Gastropoda	1	0.042	-3.178	-0.132				0.002		
3	<i>Morula granulata</i>	<i>Muricidae</i>		6	0.250	-1.386	-0.347	2.037	10	2.303	0.885	0.063	0.156
	<i>Polinices melanostomus</i>	<i>Naticidae</i>		1	0.042	-3.178	-0.132				0.002		
	<i>Monetaria annulus</i>	<i>Cypraeidae</i>		1	0.042	-3.178	-0.132				0.002		
	<i>Trachycardium rugosum</i>	<i>Cardiidae</i>	Bivalvia	1	0.042	-3.178	-0.132				0.002		
	<i>Timoclea marica</i>	<i>Veneridae</i>		4	0.167	-1.792	-0.299				0.028		
	<i>Codakia orbicularis</i>	<i>Lucinidae</i>		1	0.042	-3.178	-0.132				0.002		

Stasiun	Ulangan	Jenis	Family	Class	ni	N	ni/N	ln ni/N	$\sum ni/N$ (ln ni/N)	H'	S	LnS	E	ni/N2	C
		<i>Cypraea moneta</i>	<i>Cypraeidae</i>		2		0.043	-3.157	-0.134					0.002	
		<i>Nassarius albescens</i>	<i>Nassariidae</i>		2		0.043	-3.157	-0.134					0.002	
		<i>Euplica scripta</i>	<i>Columbellidae</i>		9		0.191	-1.653	-0.317					0.037	
		<i>Liotina peronii</i>	<i>Cyclostrematidae</i>		2		0.043	-3.157	-0.134					0.002	
		<i>Strombus urceus</i>	<i>Strombidae</i>		1		0.021	-3.850	-0.082					0.000	
		<i>Cerithium rostratum</i>	<i>Cerithiidae</i>	Gastropoda	5		0.106	-2.241	-0.238					0.011	
		<i>Cerithium citrinium</i>	<i>Cerithiidae</i>		8		0.170	-1.771	-0.301					0.029	
		<i>Polinices tumidus</i>	<i>Naticidae</i>		1		0.021	-3.850	-0.082					0.000	
	1	<i>Cancilla fillaris</i>	<i>Mitridae</i>		1	47	0.021	-3.850	-0.082	2.545	18	2.890	0.880	0.000	0.104
		<i>Phasianella solida</i>	<i>Phasianellidae</i>		1		0.021	-3.850	-0.082					0.000	
		<i>Trivirostra oryza</i>	<i>Cypraeidae</i>		3		0.064	-2.752	-0.176					0.004	
		<i>Trochus stellatus</i>	<i>Trochidae</i>		1		0.021	-3.850	-0.082					0.000	
4		<i>Archaster tucicus</i>	<i>Archasteridae</i>	Asteroidea	1		0.021	-3.850	-0.082					0.000	
		<i>Pegophysema philippiana</i>	<i>Lucinidae</i>		1		0.021	-3.850	-0.082					0.000	
		<i>Loripinus benoisti</i>	<i>Lucinidae</i>		5		0.106	-2.241	-0.238					0.011	
		<i>Codakia interrupta</i>	<i>Lucinidae</i>	Bivalvia	1		0.021	-3.850	-0.082					0.000	
		<i>Trachycardium rugosum</i>	<i>Cardiidae</i>		2		0.043	-3.157	-0.134					0.002	
		<i>Fragum fragum</i>	<i>Cardiidae</i>		1		0.021	-3.850	-0.082					0.000	
		<i>Cypraea moneta</i>	<i>Cypraeidae</i>		1		0.018	-4.043	-0.071					0.000	
		<i>Euplica scripta</i>	<i>Columbellidae</i>		14		0.246	-1.404	-0.345					0.060	
		<i>Phasianella solida</i>	<i>Phasianellidae</i>		1		0.018	-4.043	-0.071					0.000	
	2	<i>Trivirostra oryza</i>	<i>Cypraeidae</i>	Gastropoda	1	57	0.018	-4.043	-0.071	2.978	28	3.332	0.894	0.000	0.085
		<i>Atys cylindricus</i>	<i>Bullidae</i>		1		0.018	-4.043	-0.071					0.000	
		<i>Vexillum albofulvum</i>	<i>Costellariidae</i>		1		0.018	-4.043	-0.071					0.000	
		<i>Cerithium sp.</i>	<i>Cerithiidae</i>		2		0.035	-3.350	-0.118					0.001	
		<i>Rhinoclavis aspera</i>	<i>Cerithiidae</i>		2		0.035	-3.350	-0.118					0.001	

	<i>Monetaria annulus</i>	<i>Cypraeidae</i>	2	0.035	-3.350	-0.118				0.001			
	<i>Palmadusta clandestina</i>	<i>Cypraeidae</i>	1	0.018	-4.043	-0.071				0.000			
	<i>Vexillum exasperatum</i>	<i>Costellariidae</i>	1	0.018	-4.043	-0.071				0.000			
	<i>Strombus urceus</i>	<i>Strombidae</i>	2	0.035	-3.350	-0.118				0.001			
	<i>Conus lividus</i>	<i>Conidae</i>	1	0.018	-4.043	-0.071				0.000			
	<i>Cerithium rostratum</i>	<i>Cerithiidae</i>	2	0.035	-3.350	-0.118				0.001			
	<i>Cerithium citrinium</i>	<i>Cerithiidae</i>	2	0.035	-3.350	-0.118				0.001			
	<i>Monilea belcheri</i>	<i>Trochidae</i>	3	0.053	-2.944	-0.155				0.003			
	<i>Erronea erronea</i>	<i>Cypraeidae</i>	2	0.035	-3.350	-0.118				0.001			
	<i>Tapes literatus</i>	<i>Veneridae</i>	3	0.053	-2.944	-0.155				0.003			
	<i>Trachycardium subrugosum</i>	<i>Cardiidae</i>	2	0.035	-3.350	-0.118				0.001			
	<i>Codakia tigrina</i>	<i>Lucinidae</i>	1	0.018	-4.043	-0.071				0.000			
	<i>Trachycardium rugosum</i>	<i>Cardiidae</i>	1	0.018	-4.043	-0.071				0.000			
	<i>Fragum fragum</i>	<i>Cardiidae</i>	1	0.018	-4.043	-0.071				0.000			
	<i>Atrina pectinata</i>	<i>Pinnidae</i>	Bivalvia	1	0.018	-4.043	-0.071			0.000			
	<i>Troendleina masculator</i>	<i>Lucinidae</i>	1	0.018	-4.043	-0.071				0.000			
	<i>Pegophysema philippiana</i>	<i>Lucinidae</i>	3	0.053	-2.944	-0.155				0.003			
	<i>Loripinus benoisti</i>	<i>Lucinidae</i>	2	0.035	-3.350	-0.118				0.001			
	<i>Tellinella staurella</i>	<i>Tellinidae</i>	1	0.018	-4.043	-0.071				0.000			
	<i>Dosinia histrio</i>	<i>Veneridae</i>	2	0.035	-3.350	-0.118				0.001			
	<i>Euplica scripta</i>	<i>Columbellidae</i>	5	0.132	-2.028	-0.267				0.017			
	<i>Hydroginella caladonica</i>	<i>Marginellidae</i>	1	0.026	-3.638	-0.096				0.001			
	<i>Nerita albacilla</i>	<i>Neritidae</i>	5	0.132	-2.028	-0.267				0.017			
3	<i>Morula margaritcola</i>	<i>Muricidae</i>	Gastropoda	2	0.053	-2.944	-0.155	2.844	21	3.045	0.934	0.003	0.071
	<i>Rhinoclavis aspera</i>	<i>Cerithiidae</i>	3	0.079	-2.539	-0.200					0.006		
	<i>Palmadusta clandestina</i>	<i>Cypraeidae</i>	1	0.026	-3.638	-0.096					0.001		
	<i>Polinices melanostomus</i>	<i>Naticidae</i>	1	0.026	-3.638	-0.096					0.001		
	<i>Longchaeus canaliculatus</i>	<i>Pyramidellidae</i>	1	0.026	-3.638	-0.096					0.001		

<i>Trochus maculatus</i>	<i>Trochidae</i>		1	0.026	-3.638	-0.096	0.001
<i>Tapes literatus</i>	<i>Veneridae</i>		1	0.026	-3.638	-0.096	0.001
<i>Trachycardium subrugosum</i>	<i>Cardiidae</i>		3	0.079	-2.539	-0.200	0.006
<i>Anadara antiquata</i>	<i>Arcidae</i>		1	0.026	-3.638	-0.096	0.001
<i>Tellina cruciate</i>	<i>Tellinidae</i>		1	0.026	-3.638	-0.096	0.001
<i>Timoclea marica</i>	<i>Veneridae</i>		2	0.053	-2.944	-0.155	0.003
<i>Atrina pectinata</i>	<i>Pinnidae</i>	Bivalvia	1	0.026	-3.638	-0.096	0.001
<i>Troendleina masculator</i>	<i>Lucinidae</i>		1	0.026	-3.638	-0.096	0.001
<i>Modiolus micropterus</i>	<i>Mytilidae</i>		3	0.079	-2.539	-0.200	0.006
<i>Trachycardium rugosum</i>	<i>Cardiidae</i>		2	0.053	-2.944	-0.155	0.003
<i>Codakia bella</i>	<i>Lucinidae</i>		1	0.026	-3.638	-0.096	0.001
<i>Fragum fragum</i>	<i>Cardiidae</i>		1	0.026	-3.638	-0.096	0.001
<i>Barbatia trapezina</i>	<i>Arcidae</i>		1	0.026	-3.638	-0.096	0.001

5. Analisis Bahan Organik Total

Stasiun	Ulangan	BCK (gr)	BS (gr)	BSP	(BSP-BCK)	(BCK+BS)-BSP	%	%BOT	BOT	Rata-rata BOT
1	1	27.540	5.019	32.290	4.750	0.269	100	5.360	8.55	8.031
	2	22.411	5.020	27.171	4.760	0.260		5.179	8.26	
	3	24.24	5.014	29.025	4.785	0.229		4.567	7.28	
2	1	17.467	5.018	22.192	4.725	0.293	100	5.839	9.31	9.395
	2	27.516	5.014	32.266	4.750	0.264		5.265	8.40	
	3	28.345	5.024	33.039	4.694	0.330		6.568	10.48	
3	1	25.720	5.024	30.450	4.730	0.294	100	5.852	9.33	8.492
	2	22.295	5.028	27.048	4.753	0.275		5.469	8.72	
	3	28.653	5.030	33.449	4.796	0.234		4.652	7.42	
4	1	29.002	5.022	33.762	4.760	0.262	100	5.217	8.32	7.416
	2	26.278	5.030	31.085	4.807	0.223		4.433	7.07	
	3	26.169	5.025	30.978	4.809	0.216		4.299	6.86	
<b>Total</b>								62.701	100.00	

## 6. Hasil Pengolahan Data Lamun

### A. Persentase Tutupan Total Lamun

NILAI TUTUPAN LAMUN (%)				
Ulangan	Stasiun 1	Stasiun 2	Stasiun 3	Stasiun 4
1	29.273	64.000	41.400	48.556
2	38.545	40.667	36.600	30.545
3	33.091	56.250	53.400	40.571
<b>Rata-Rata</b>	<b>33.636</b>	<b>53.639</b>	<b>43.800</b>	<b>39.891</b>

### B. Kerapatan Total Lamun

NILAI KERAPATAN TOTAL LAMUN (ind/m <sup>2</sup> )				
Ulangan	Stasiun I	Stasiun II	Stasiun III	Stasiun IV
1	305.090	624.000	374.400	460.000
2	206.000	485.000	635.000	365.000
3	173.000	1259.000	973.000	221.000
<b>Rata-rata</b>	<b>228.030</b>	<b>789.333</b>	<b>660.800</b>	<b>348.667</b>

## 7. Analisis Butir Sedimen Menggunakan Gradistat

### S1 U1

	METHOD OF MOMENTS			FOLK & WARD METHOD		
	Arithmetic $\bar{x}_m$	Geometric $\bar{x}_m$	Logarithmic $\bar{x}$	Geometric $\bar{x}_m$	Logarithmic $\bar{x}$	Description
MEAN :	558.8	346.3	1.530	359.2	1.477	Medium Sand
SORTING ( $\sigma$ ):	619.0	2.526	1.337	2.715	1.441	Poorly Sorted
SKEWNESS ( $Sk$ ):	1.967	0.481	-0.481	0.259	-0.259	Coarse Skewed
KURTOSIS ( $K$ ):	6.081	2.434	2.434	0.951	0.951	Mesokurtic

### S1 U2

	METHOD OF MOMENTS			FOLK & WARD METHOD		
	Arithmetic $\bar{x}_m$	Geometric $\bar{x}_m$	Logarithmic $\bar{x}$	Geometric $\bar{x}_m$	Logarithmic $\bar{x}$	Description
MEAN :	730.3	450.6	1.150	409.2	1.289	Medium Sand
SORTING ( $\sigma$ ):	725.5	2.659	1.411	2.673	1.418	Poorly Sorted
SKEWNESS ( $Sk$ ):	1.365	0.196	-0.196	0.288	-0.288	Coarse Skewed
KURTOSIS ( $K$ ):	3.661	2.025	2.025	0.659	0.659	Very Platykurtic

### S1 U3

	METHOD OF MOMENTS			FOLK & WARD METHOD		
	Arithmetic $\bar{x}_m$	Geometric $\bar{x}_m$	Logarithmic $\bar{x}$	Geometric $\bar{x}_m$	Logarithmic $\bar{x}$	Description
MEAN :	582.0	363.6	1.459	368.5	1.440	Medium Sand
SORTING ( $\sigma$ ):	632.1	2.508	1.327	2.587	1.371	Poorly Sorted
SKEWNESS ( $Sk$ ):	1.879	0.485	-0.485	0.332	-0.332	Very Coarse Skewed
KURTOSIS ( $K$ ):	5.669	2.370	2.370	0.849	0.849	Platykurtic

### S2 U1

	METHOD OF MOMENTS			FOLK & WARD METHOD		
	Arithmetic $\bar{x}_m$	Geometric $\bar{x}_m$	Logarithmic $\bar{x}$	Geometric $\bar{x}_m$	Logarithmic $\bar{x}$	Description
MEAN :	424.7	276.5	1.855	282.7	1.823	Medium Sand
SORTING ( $\sigma$ ):	516.1	2.262	1.178	2.091	1.064	Poorly Sorted
SKEWNESS ( $Sk$ ):	2.745	0.946	-0.946	0.261	-0.261	Coarse Skewed
KURTOSIS ( $K$ ):	10.27	3.497	3.497	1.172	1.172	Leptokurtic



## S2 U2

	METHOD OF MOMENTS			FOLK & WARD METHOD		
	Arithmetic $\bar{x}_m$	Geometric $\bar{x}_m$	Logarithmic $\bar{x}$	Geometric $\bar{x}_m$	Logarithmic $\bar{x}$	Description
MEAN :	500.5	312.4	1.678	340.4	1.555	Medium Sand
SORTING ( $\sigma$ ):	579.2	2.441	1.287	2.522	1.335	Poorly Sorted
SKEWNESS ( $Sk$ ):	2.205	0.695	-0.695	0.377	-0.377	Very Coarse Skewed
KURTOSIS ( $K$ ):	7.270	2.691	2.691	0.869	0.869	Platykurtic

## S2 U3

	METHOD OF MOMENTS			FOLK & WARD METHOD		
	Arithmetic $\bar{x}_m$	Geometric $\bar{x}_m$	Logarithmic $\bar{x}$	Geometric $\bar{x}_m$	Logarithmic $\bar{x}$	Description
MEAN :	595.3	348.3	1.522	361.8	1.467	Medium Sand
SORTING ( $\sigma$ ):	670.7	2.696	1.431	2.816	1.494	Poorly Sorted
SKEWNESS ( $Sk$ ):	1.729	0.484	-0.484	0.289	-0.289	Coarse Skewed
KURTOSIS ( $K$ ):	4.967	2.164	2.164	0.910	0.910	Mesokurtic

## S3 U1

	METHOD OF MOMENTS			FOLK & WARD METHOD		
	Arithmetic $\bar{x}_m$	Geometric $\bar{x}_m$	Logarithmic $\bar{x}$	Geometric $\bar{x}_m$	Logarithmic $\bar{x}$	Description
MEAN :	516.4	365.2	1.453	324.8	1.622	Medium Sand
SORTING ( $\sigma$ ):	495.2	2.195	1.134	2.084	1.059	Poorly Sorted
SKEWNESS ( $Sk$ ):	2.308	0.382	-0.382	0.139	-0.139	Coarse Skewed
KURTOSIS ( $K$ ):	8.691	2.722	2.722	0.769	0.769	Platykurtic

## S3 U2

	METHOD OF MOMENTS			FOLK & WARD METHOD		
	Arithmetic $\bar{x}_m$	Geometric $\bar{x}_m$	Logarithmic $\bar{x}$	Geometric $\bar{x}_m$	Logarithmic $\bar{x}$	Description
MEAN :	500.0	361.1	1.469	323.9	1.627	Medium Sand
SORTING ( $\sigma$ ):	463.6	2.147	1.102	2.062	1.044	Poorly Sorted
SKEWNESS ( $Sk$ ):	2.390	0.321	-0.321	0.133	-0.133	Coarse Skewed
KURTOSIS ( $K$ ):	9.522	2.840	2.840	0.774	0.774	Platykurtic

## S3 U3

	METHOD OF MOMENTS			FOLK & WARD METHOD		
	Arithmetic $\bar{x}_m$	Geometric $\bar{x}_m$	Logarithmic $\bar{x}$	Geometric $\bar{x}_m$	Logarithmic $\bar{x}$	Description
MEAN :	590.0	416.1	1.265	393.7	1.345	Medium Sand
SORTING ( $\sigma$ ):	531.8	2.256	1.174	2.313	1.210	Poorly Sorted
SKEWNESS ( $Sk$ ):	1.929	0.166	-0.166	0.190	-0.190	Coarse Skewed
KURTOSIS ( $K$ ):	6.781	2.448	2.448	1.016	1.016	Mesokurtic

## S4 U1

	METHOD OF MOMENTS			FOLK & WARD METHOD		
	Arithmetic $\bar{x}_m$	Geometric $\bar{x}_m$	Logarithmic $\bar{x}$	Geometric $\bar{x}_m$	Logarithmic $\bar{x}$	Description
MEAN :	330.1	230.2	2.119	201.3	2.313	Fine Sand
SORTING ( $\sigma$ ):	409.2	2.050	1.036	1.890	0.919	Moderately Sorted
SKEWNESS ( $Sk$ ):	3.721	1.204	-1.204	0.457	-0.457	Very Coarse Skewed
KURTOSIS ( $K$ ):	17.93	4.695	4.695	1.362	1.362	Leptokurtic

## S4 U2

	METHOD OF MOMENTS			FOLK & WARD METHOD		
	Arithmetic $\bar{x}_m$	Geometric $\bar{x}_m$	Logarithmic $\bar{x}$	Geometric $\bar{x}_m$	Logarithmic $\bar{x}$	Description
MEAN :	399.5	286.3	1.804	285.3	1.809	Medium Sand
SORTING ( $\sigma$ ):	444.4	2.039	1.028	1.991	0.994	Moderately Sorted
SKEWNESS ( $Sk$ ):	3.259	0.949	-0.949	0.172	-0.172	Coarse Skewed
KURTOSIS ( $K$ ):	14.17	4.141	4.141	1.230	1.230	Leptokurtic

## S4 U3

	METHOD OF MOMENTS			FOLK & WARD METHOD		
	Arithmetic $\bar{x}_m$	Geometric $\bar{x}_m$	Logarithmic $\bar{x}$	Geometric $\bar{x}_m$	Logarithmic $\bar{x}$	Description
MEAN :	563.9	391.5	1.353	381.6	1.390	Medium Sand
SORTING ( $\sigma$ ):	557.9	2.237	1.162	2.413	1.271	Poorly Sorted
SKEWNESS ( $Sk$ ):	2.172	0.374	-0.374	0.306	-0.306	Very Coarse Skewed
KURTOSIS ( $K$ ):	7.309	2.957	2.957	1.303	1.303	Leptokurtic

## 8. Hasil Uji One Way ANOVA Kelimpahan Makrozoobentos

### Descriptives

kelimpahan

	N	Mean	Std. Deviation	Std. Error	95% Confidence Interval for Mean		Minimum	Maximum
					Lower Bound	Upper Bound		
stasiun 1	3	1.49333E1	3.569781	2.061014	6.06551	23.80116	11.600	18.700
stasiun 2	3	1.32333E1	2.657693	1.534420	6.63126	19.83541	10.700	16.000
stasiun 3	3	8.93333	.832666	.480740	6.86488	11.00179	8.000	9.600
stasiun 4	3	1.05667E1	.288675	.166667	9.84956	11.28378	10.400	10.900
Total	12	1.19167E1	3.101857	.895429	9.94584	13.88749	8.000	18.700

### ANOVA

kelimpahan	Sum of Squares	df	Mean Square	F	Sig.
Between Groups	64.670	3	21.557	4.189	.047
Within Groups	41.167	8	5.146		
Total	105.837	11			

### Post Hoc Tukey

#### Multiple Comparisons

Kelimpahan  
Tukey HSD

(I) stasiun	(J) stasiun	Mean Difference (I-J)	Std. Error	Sig.	95% Confidence Interval	
					Lower Bound	Upper Bound
stasiun 1	stasiun 2	1.700000	1.852176	.796	-4.23132	7.63132
	stasiun 3	6.000000*	1.852176	.047	.06868	11.93132
	stasiun 4	4.366667	1.852176	.164	-1.56465	10.29799
stasiun 2	stasiun 1	-1.700000	1.852176	.796	-7.63132	4.23132
	stasiun 3	4.300000	1.852176	.172	-1.63132	10.23132
	stasiun 4	2.666667	1.852176	.512	-3.26465	8.59799
stasiun 3	stasiun 1	-6.000000*	1.852176	.047	-11.93132	-.06868
	stasiun 2	-4.300000	1.852176	.172	-10.23132	1.63132
	stasiun 4	-1.633333	1.852176	.814	-7.56465	4.29799
stasiun 4	stasiun 1	-4.366667	1.852176	.164	-10.29799	1.56465
	stasiun 2	-2.666667	1.852176	.512	-8.59799	3.26465
	stasiun 3	1.633333	1.852176	.814	-4.29799	7.56465

\*. The mean difference is significant at the 0.05 level.

## 9. Hasil Uji One Way ANOVA Tutupan Lamun

### Descriptives

Tutupan

	N	Mean	Std. Deviation	Std. Error	95% Confidence Interval for Mean		Minimum	Maximum
					Lower Bound	Upper Bound		
Stasiun 1	3	33.63633	4.659993	2.690448	22.06027	45.21240	29.273	38.545
Stasiun 2	3	53.63900	11.883611	6.861006	24.11847	83.15953	40.667	64.000
Stasiun 3	3	43.80000	8.653323	4.995998	22.30395	65.29605	36.600	53.400
Stasiun 4	3	39.89067	9.024753	5.210444	17.47194	62.30940	30.545	48.556
Total	12	42.74150	10.750245	3.103329	35.91112	49.57188	29.273	64.000

### ANOVA

Tutupan

	Sum of Squares	df	Mean Square	F	Sig.
Between Groups	632.722	3	210.907	2.642	.121
Within Groups	638.524	8	79.815		
Total	1271.246	11			

10. Hasil uji Korelasi Hubungan Persentase Tutupan Lamun Dengan Kelimpahan Makrozoobentos

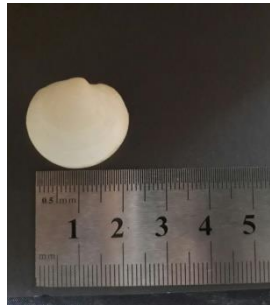
Correlations												
		Tutupan_Lamun	Kelimpahan_Makrozoobentos	Kerapatan_Lamun	Jumlah_Jenis_Makrozoobentos	Keanekaragaman_Makrozoobentos	Suhu	Kecepatan_Arus	Salinitas	Kekeruhan	BOT	Substrat
Tutupan_Lamun	Pearson Correlation	1	0.114	,681*	-0.217	0.246	-0.254	-0.286	-0.288	0.099	0.494	-0.190
	Sig. (2-tailed)		0.724	0.015	0.497	0.441	0.426	0.368	0.363	0.759	0.102	0.554
	N	12	12	12	12	12	12	12	12	12	12	12
Kelimpahan_Makrozoobentos	Pearson Correlation	0.114	1	-0.228	-0.180	-0.472	-0.216	-0.404	0.252	0.560	0.028	0.181
	Sig. (2-tailed)	0.724		0.476	0.576	0.121	0.500	0.192	0.429	0.058	0.932	0.573
	N	12	12	12	12	12	12	12	12	12	12	12
*. Correlation is significant at the 0.05 level (2-tailed).												
**. Correlation is significant at the 0.01 level (2-tailed).												

11. Jenis – Jenis Makrozoobentos yang Ditemukan

A. Kelas Bivalvia



*Tapes literatus*



*Troendleina musculator*



*Trachycardium subrugosum*



*Pitar Manillae*



*Pegophysema philippiana*



*Lioconcha tigrina*



*Codakia tigerina*



*Loripinus benoisti*



*Modiolus micropterus*



*Anadara antiquata*



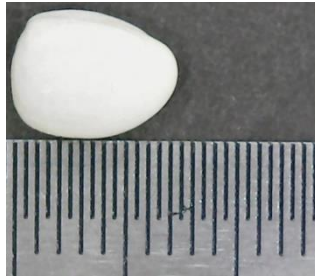
*Tellina sp*



*Trachycardium Rugosum*



*Tellina cruciate*



*Donax gemmula*



*Lioconcha castrensis*



*Tellinella staurella*



*Codakia orbicularis*



*Lioconcha polita*



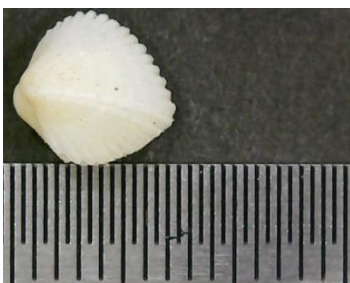
*Codakia bella*



*Timoclea marica*



*Codakia interrupta*



*Fragum fragum*



*Dosinia histrio*



*Atrina pectinata*

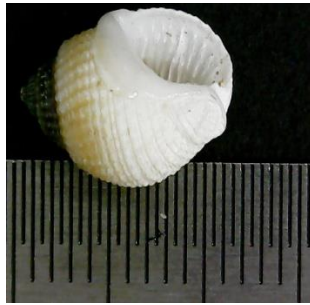


*Barbatia trapezina*

B. Kelas Gastropoda



*Cypraea moneta*



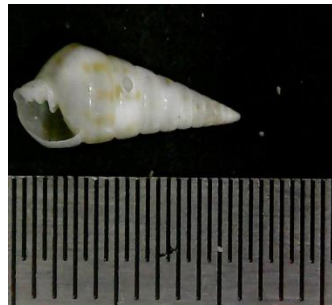
*Nassarius albescens*



*Cypraea clandestina*



*Euplica scripta*



*Pyramidella insularum*



*Hydroginella caladonica*



*Palmadusta clandestina*



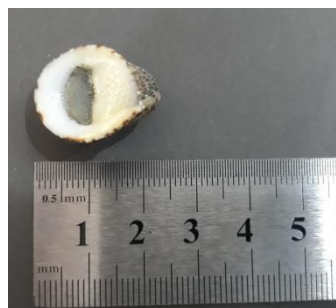
*Strombus mutabilis*



*Liotina peronii*



*Cerithium columna*



*Nerita albicilla*



*Vexillum exasperatum*





*Tectarius tectumpersicum*



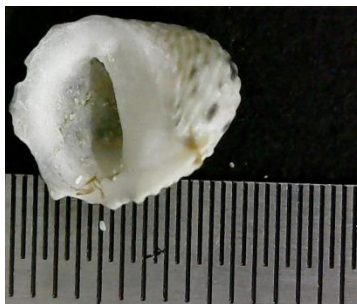
*Phasianella aethiopica*



*Pleuroploca filamentosa*



*Phasinella solida*



*Nerita insculpta*



*Atys naucum*



*Strombus urceus*



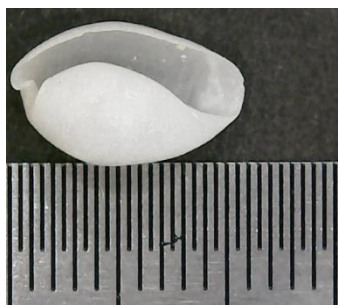
*Eunaticins papilla*



*Trivirostra oryza*



*Conus lividus*



*Atys cylindricus*



*Cerithium rostratum*



*Vexillum albofulvum*



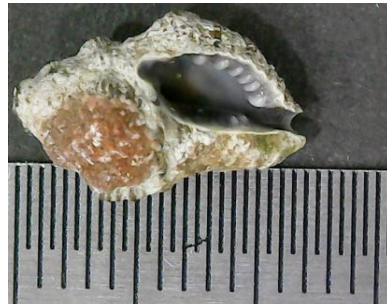
*Cerithium citrinum*



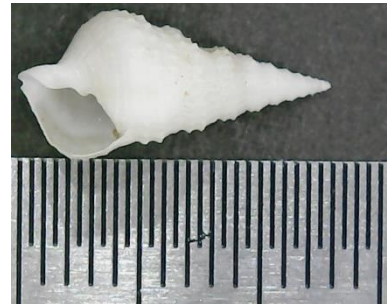
*Polinices melanostomus*



*Otopleura auriscati*



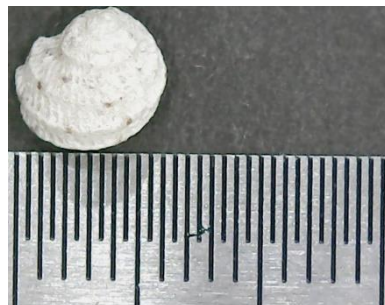
*Morula margariticola*



*Cerithium sp*



*Longchaeus canaliculatus*



*Calliostoma gemmulatum*



*Otopleura mitralis*



*Pseudotorinia sp*



*Polinices tumidus*



*Trochus stellatus*



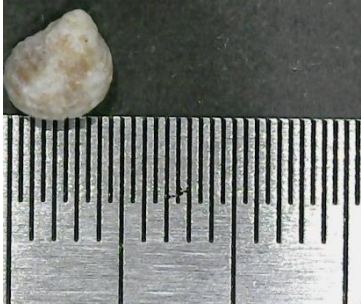
*Cancilla filaris*



*Cerithium trilli*



*Rhinoclavis aspera*



*Monilea belcheri*



*Monetaria annulus*



*Erronea erronea*



*Trochus maculatus*



*Morula granulata*

C. Kelas Asteroidea



*Archaster typicus*

## 12. Dokumentasi Pengambilan Data di Lapangan



Pemasangan transek garis



Meletakkan transek 50 x 50 cm



Menyaring sampel makrozoobentos



Mengambil sampel makrozoobentos



Pengambilan data lamun



Pengambilan data arus



Foto tim turlap

### 13. Dokumentasi Analisis di Laboratorium



Mengukur salinitas



Mengidentifikasi sampel makrozoobentos



Menimbang sampe sedimen



Mengayak sampel sedimen menggunakan Sieve shaker



Menimbang cawan petri



Memasukkan sampel sedimen ke dalam tanur