

## DAFTAR PUSTAKA

- Ali, N. & Sinilele, A. 2019. Kearifan Lokal dalam Melestarikan Pulau dan Laut di Pulau Bonetambu Sulawesi Selatan. *Hasanuddin Journal of Sociology (HJS)* vol. 1 no. 2: 2685-5348.
- Amran, M.A. 2011. Estimasi Kondisi Padang Lamun Berbasis Transformasi Nilai Radiansi Citra Quickbird dan Alos Avnir-2 Studi Kasus Wilayah Perairan sekitar Pulau Kodingareng Lompo, Pulau Barrang Caddi dan Pulau Bonetambung, Makassar. Disertasi. Teknik Geodesi dan Geomatika, Institut Teknologi Bandung.
- Ansar, M. H., Priosambodo, D., Litaay, M. & Salam, M. A. 2017. Struktur Komunitas Padang Lamun di Perairan Kepulauan Waisal Kabupaten Raja Ampat Papua Barat. *Jurnal Ilmu Alam dan Lingkungan* vol. 8 no. 15: 29-37.
- Arief, M. 2013. Pengembangan Metode Lyzenga untuk Deteksi Terumbu Karang di Kepulauan Seribu dengan Menggunakan Data Satelit AVNIR-2. *Statistika* vol. 13 no. 2: 55-64.
- Azkab, M. H. 2000. Struktur dan Fungsi pada Komunitas Lamun. *Oseana* vol. 25, no. 1: 1-11.
- Berger, M., Moreno, J., Johannessen, J. A., Levelt, P. F. & Hanssen, R. F. 2012. ESA's Sentinel Missions in Support of Earth System Science. *Remote Sensing of Environment* vol. 120: 84-90.
- Budhiman, S., Winarso, G. & Wikanti, A. 2013. Pengaruh Pengambilan Training Sample Substrat Dasar Berbeda Pada Koreksi Kolom Air Menggunakan Data Penginderaan Jauh. *Jurnal Penginderaan Jauh dan Pengolahan Data Citra Digital* vol. 10 no. 2: 83-91.
- Cai, Z. 2019. Vegetation Observation in the Big Data Era: Sentinel-2 Data for Mapping the Seasonality of Land Vegetation. Thesis. Lund University, Faculty of Science, Department of Physical Geography and Ecosystem Science.
- Collier, C. J. & Waycott, M. 2014. Temperature Extremes Reduce Seagrass Growth and Induce Mortality. *Marine Pollution Bulletin* vol. 83 no. 2: 483-490.
- Dahuri, R., Rais, J., Ginting, S.P. & Sitepu, M.J. 2001. Pengelolaan Sumberdaya Wilayah Pesisir dan Lautan Secara Terpadu. Pradnya Paramita, Jakarta. 328 hal.
- Danoedoro, P. 2012. Pengolahan Citra Digital. Fakultas Geografi Universitas Gadjah Mada, Yogyakarta.
- Davis, M. L. & Cornwell, D. A. 1991. *Introduction to Environmental Engineering*. McGraw-Hill, New York.
- Dinas Pariwisata Kota Makassar. 2019. Data Kepulauan Makassar, Kecamatan Kepulauan Sangkarrang dan Kecamatan Ujung Tanah.
- Drusch, M., Bello U. D., Carlier, S., Colin, O., Fernandez, V., Gascon, F., Hoersch, B., Isola, C., Laberinti, P., Martimort, P., Meygret, A., Spoto, F., Sy, O., Marchese, F. & Bargellini, P. 2012. Sentinel-2: ESA's Optical High-Resolution Mission for GMES Operational Services. *Remote Sensing of Environment* vol. 120: 25-36.

- Effendi, H. 2003. Telaah Kualitas Air Bagi Pengelolaan Sumberdaya dan Lingkungan Perairan. Kanisius, Yogyakarta
- English, S. C., Wilkinson & Baker, V. 1994. Survey Manual for Tropical Marine Resources. Australian Institute of Marine Science, Townville.
- European Space Agency. 2012. ESA's Optical High-Resolution Mission for GMeS Operational Services. ESA Communication, Noordwijk. 80 p.
- Fahrudin, M. F., Yulianda & Setyobudiandi, I. 2017. Kerapatan dan Penutupan Ekosistem Lamun di Pesisir Desa Bahoi, Sulawesi Utara. Jurnal Ilmu dan Teknologi Kelautan Tropis vol. 9, no. 1: 375-383.
- Faishol, M. L., Nurcahyo, H., Nugroho, D. A. S., Rizky, M. A., Hutanto, Y., Roni, S., Utama, A. P., Budi, P., Supriyadi, S. & Kertawijaya, L. S. 2016. Ekosistem Lamun di Taman Wisata Perairan Kepulauan Anambas, Loka Kawasan Konservasi Perairan Nasional Pekanbaru.
- Fauzan, M. A. 2018. Pantauan Perubahan Tutupan Padang Lamun menggunakan Citra Sentinel-2 MSI Time-Series di Wilayah Pesisir Pulau Derawan. Skripsi. Universitas Gadjah Mada.
- Fauzi, M. N., Muhamad, I., Amkieltiela, Khairil F. F., Barano S..S., Estradivari & Christian N..H. 2020. Pemanfaatan Citra Sentinel-2 untuk Pemetaan Distribusi Lamun di Kepulauan Kei Kecil Maluku Tenggara. Seminar Nasional Geografi III: 822-829.
- Gosari, B. A. J. & Haris, A. 2012. Studi Kerapatan dan Penutupan Jenis Lamun di Kepulauan Spermonde. Jurnal Ilmu Kelautan dan Perikanan vol. 22 no. 1: 156-162.
- Green, E. P., Mumby, P. J., Edwards, A. J. & Clark, C. D. 2000. Remote Sensing Handbook for Tropical Coastal Management. United Nations Educational, Scientific and Cultural Organization, Paris. 316 p.
- Handayani, T. & Alimudin, E. 2020. Penerapan Metode Filter Gaussian dalam Perbaikan Kualitas Citra Satelit Modis. Jurnal Fasilkom vol. 10 no. 2: 122-125.
- Herandarudewi, S. M. C., Kiswara, W., Irawan, A., Juraij, Anggraeni, F., Sunuddin, A., Munandar, E., Tania, C. & Khalifa, M. A. 2019. Panduan Survei dan Monitoring Duyung dan Lamun (Edisi 1). ITB Press, Bandung. 80 hal.
- Hidayat, W., Warpala, I. W. S. & Dewi, N. P. S. R. 2018. Komposisi Jenis Lamun dan Karakteristik Biofisik Perairan di Kawasan Pelabuhan Desa Celukanbawang Kecamatan Gerokgak Kabupaten Buleleng Bali. Jurnal Pendidikan Biologi Undiksha vol. 5 no. 3: 133-145.
- Jompa, J., Willem, M. & Dewi, Y. 2005. Kondisi Ekosistem Perairan Kepulauan Spermonde: Keterkaitannya dengan Pemanfaatan Sumberdaya Laut di Kepulauan Spermonde. Divisi Kelautan Pusat Kegiatan Penelitian: 265-279.
- Jumniaty, S. 2013. Tingkat Kelangsungan Hidup dan Laju Pertumbuhan Enhalus Acoroides yang Ditransplantasi dengan Metode Staple pada APO (Alat Pemecah Ombak) dan Tanpa Apo di Kabupaten Pangkep. Skripsi. Jurusan Ilmu Kelautan, Fakultas Ilmu Kelautan dan Perikanan, Universitas Hasanuddin.

- Kasim, M., Pratomo, A. & Muzahar. 2013. Struktur Komunitas Padang Lamun pada Kedalaman yang Berbeda di Perairan Desa Berakit Kabupaten Bintan. Program Studi Ilmu Kelautan, Fakultas Ilmu Kelautan dan Perikanan, Universitas Maritim Raja Ali Haji.
- Keputusan Menteri Negara Lingkungan Hidup Nomor 200 Tahun 2004 tentang Kriteria Baku Kerusakan dan Pedoman Penentuan Status Padang Lamun.
- La Nafie, Y. A. 2016. Seagrass Responses to Interacting Abiotic Stresses. Tesis. Radboud University Nijmegen. 142 p.
- Latuconsina, H., Sangadji, M. & Sarfan, L. 2014. Struktur Komunitas Ikan Padang Lamun di Perairan Pantai Wael Teluk Kotania Kabupaten Seram Bagian Barat. *Jurnal Agribisnis Perikanan* vol. 6 no. 3: 24-32.
- LIPI. 2014. Panduan Teknis Pemetaan Habitat Dasar Perairan Laut Dangkal. Jakarta, Indonesia: Pusat Penelitian Oseanografi Lembaga Ilmu Pengetahuan Indonesia
- Lyzenga, R. D. 1978. Shallow Water Bathymetry Using Combined Lidar and Multispectral. Scanner Data. *Remote Sensing. International Journal of Remote Sensing* vol. 2 no. 1: 71-82.
- Marlina, Y. 2015. Struktur Komunitas Lamun Pantai Sekera Kecamatan Bintan Utara Kabupaten Bintan. Skripsi. Program Studi Ilmu Kelautan, Fakultas Ilmu Kelautan dan Perikanan, Universitas Maritim Raja Ali Haji.
- Mashoreng, S., Hatta, M., Tambaru, R. & Rahman, R. 2022. Perubahan Konsentrasi Nitrat dan Fosfat pada Sedimen sebagai Dampak dari Kerusakan Lamun akibat Jangkar Kapal di Kepulauan Spermonde Makassar. *Maspari Journal* vol. 14 no. 1: 15-24.
- McKenzie, L. J. & Yoshida, R. 2014. Seagrass-Watch: Proceedings of a Workshop for Monitoring Seagrass Habitats in the Kimberley Region. Broome, Western Australia.
- Muhsoni, F. F. 2015. Buku Ajar Penginderaan Jauh. Edisi Pertama. UTM Press, Bangkalan Madura. 173 hal.
- Mustaromin, E., Apriadi, T. & Kurniawan, D. 2019. Transplantasi Lamun Enhalus acoroides Menggunakan Metode Berbeda di Perairan Sebong Pereh Kecamatan Teluk Sebong Kabupaten Bintan. *Jurnal Akuatiklestari* vol. 3 no. 1: 23-30.
- Nontji, A. 2005. Laut Nusantara. Djambatan, Jakarta. 372 hal.
- Nontji, A. 2007. Laut Nusantara. Djambatan, Jakarta. 356 hal.
- Nuraulia, N. J. 2020. Pemetaan Padang Lamun menggunakan Citra Sentinel-2 di Perairan Sari Ringgung Kabupaten Pesawaran Provinsi Lampung. Skripsi. Jurusan Ilmu Kelautan, Fakultas Matematika dan Ilmu Pengetahuan Alam, Universitas Sriwijaya.
- Nuridin, N. 2020. Informasi Geospasial Gugusan Pulau Kecil Kepulauan Spermonde - Dinamika Ekosistem Perairan Dangkal dalam 44 Tahun. Penerbit Andi, Yogyakarta. 350 hal.

- Nuridin, N., Hidayatulah, T. & Akbar, M. A. S. 2009. Analisis Klasifikasi Objek Penutupan Dasar Perairan laut Dangkal Menggunakan citra Alos Avnir-2 vol. 11 no. 1: 8-17.
- Pamungkas, M. W. T. 2016. Studi Perubahan Habitat Padang Lamun berdasarkan Kualitas Perairan menggunakan Citra Landsat 8. Jurusan Teknik Geomatika, Fakultas Teknik Sipil dan Perencanaan, Institut Teknologi Sepuluh Nopember.
- Phillips, R. C. & Menez, E. G. 1988. Seagrass in: Smithsonian Contribution to the Marine Science. Smithsonian Institution Press, Washington, D.C. 104 p.
- Priosambodo, D. 2007. Sebaran Jenis-Jenis Lamun di Sulawesi Selatan. *Jurnal Bionature* vol. 8 no. 1: 8-17.
- Putra, I. N. G. 2019. Karakteristik Morfologi dan Status Padang Lamun di Indonesia. Skripsi. Program Studi Ilmu Kelautan, Fakultas Kelautan dan Perikanan, Universitas Udayana.
- Putri, P. I., Lestari, F. & Susiana. 2018. Potensi Sumberdaya Lamun sebagai Pencadangan Kawasan Konservasi di Perairan Beloreng, Tembeling, Kabupaten Bintan. *Jurnal Akuatiklestari* vol. 2 no. 1: 14-21.
- Rahaldi, P., Handayani, H. H. & Wibowo, A. 2013. Analisa Kesehatan Tanaman Padi Berdasarkan Nilai Normalized Difference Vegetation Index (NDVI) menggunakan Citra Aster (Studi Kasus : Kabupaten Indramayu - Jawa Barat). *Jurnal Geoid* vol. 8 no. 2: 107-117.
- Rahmawati, S., Irawan, A., Supriyadi, I. H. & Azkab, M. H. 2014. Panduan Monitoring Padang Lamun. Pusat Penelitian Oseanografi Lembaga Ilmu Pengetahuan Indonesia, Jakarta. 37 hal.
- Rawung, S., Tilaar, F. F. & Rondonuwu, A. B. 2018. Inventarisasi Lamun di Perairan Marine Field Station Fakultas Perikanan dan Ilmu Kelautan Universitas Sam Ratulangi Kecamatan Likupang Timur Kabupaten Minahasa Utara. *Jurnal Ilmiah Platax* vol. 6 no. 2: 38-45.
- Riandi, R., Apriansyah & Risiko. 2022. Pengukuran Kecepatan Arus Permukaan dengan Metode Lagrangian di Estuari Mempawah. *Manfish Journal* vol. 2 no. 2: 72-79.
- Rifardi. 2008. *Tekstur Sedimen, Sampling dan Analisis*. UNRI Press, Pekanbaru. 101hal.
- Rosalina, D., Herawati, E.Y., Risjani, Y. & Musa, M. 2018. Keanekaragaman Spesies Lamun di Kabupaten Bangka Selatan Provinsi Kepulauan Bangka Belitung. *Enviro Scienteae* vol. 14 no. 1: 21-28.
- Rugebregt, M. J. 2015. Ekosistem Lamun di Kawasan Pesisir Kecamatan Kei Besar Selatan, Kabupaten Maluku Tenggara, Provinsi Maluku, Indonesia. *Jurnal Widyariset* vol. 1 no. 1: 79-86.
- Rugebregt, M. J., Matuanakotta, C., Syafrizal. 2020. Keanekaragaman Jenis, Tutupan Lamun dan Kualitas Air di Perairan Teluk Ambon. *Jurnal Ilmu Lingkungan* vol. 18 no. 3: 589-594.
- Sari, R. M., Kurniawan, D. & Sabriyati, D. 2021. Kerapatan dan Pola Sebaran Lamun Berdasarkan Aktivitas Masyarakat di Perairan Pengujian Kabupaten Bintan. *Journal of Marine Research* vol. 10 no. 4: 527-534.

- Sarinawaty, P., Idris, F. & Nugraha, A. H. 2020. Karakteristik Morfometrik Lamun *Enhalus acoroides* dan *Thalassia hemprichii* di Pesisir Pulau Bintan. *Journal of Marine Research* vol. 9 no. 4: 474-484.
- Selamat, M. B, Muhiddin, A. H & Ukkas, M. 2014. Karakterisasi 3D Substrat Bentik Perairan Karang Pulau Bonetambung Makassar. *Torani (Jurnal Ilmu Kelautan dan Perikanan)* vol. 24 no. 2: 1-8.
- Short, F. T., Coles, R. G. 2003. *Global Seagrass Research Methods*. Elsevier Science BV, Amsterdam. 482 p.
- Sjafrie, N. D. M, Hernawan, U. E, Prayudha, B., Supriyadi, I. H., Iswari, M. Y., Rahmat, Anggraini, K., Rahmawati, S. & Suyarso. 2018. *Status Padang Lamun*. Pusat Penelitian Oseanografi. LIPI. Jakarta. 40 hal.
- Steven. 2013. *Pengaruh Perbedaan Substrat terhadap Pertumbuhan Semaian dari Biji Lamun Enhalus acoroides*. Skripsi. Fakultas Ilmu Kelautan dan Perikanan, Universitas Hasanuddin.
- Subarni, S., Nurrahman, Y. A. & Nurdiansyah, S.I. 2023. Studi Laju Pertumbuhan Lamun (*Thalassia hemprichii*) Hasil Transplantasi Menggunakan Metode TERFS dan Peat Pot di Teluk Melanau Pulau Lemukutan. *Jurnal Laut Khatulistiwa* vol. 6 no. 1: 40-49.
- Supriharyono. 2007. *Konservasi Ekosistem Sumberdaya Hayati di wilayah Pesisir dan Laut*. Pustaka Pelajar, Yogyakarta. 428 hal.
- Tampubolon, S. 2010. *Sedimen di Muara Aek Tolang Pandan Sumatera Utara*. Skripsi. Ilmu Kelautan Universitas Riau.
- Thalib, M. S. 2017. *Klasifikasi Tutupan Lamun Menggunakan Data Citra Sentinel-2A di Pulau Bontosua, Kepulauan Spermonde*. Skripsi. Fakultas Ilmu Kelautan dan Perikanan Universitas Hasanuddin.
- Tuwo, A. 2011. *Pengelolaan Ekowisata Pesisir dan Laut*. Brilliant International, Surabaya. 412 hal.
- Wagey, B.T & Sake, W. 2013. Variasi Morfometrik beberapa Jenis Lamun di Perairan Kelurahan Tongkeina Kecamatan Bunaken. *Jurnal pesisir dan Laut Tropis* vol. 3 no. 1: 36-44.
- Wangkanusa, M. S., Kondoy, K. I. F & Rondonuwu, A. B. 2017. Identifikasi Kerapatan dan Karakter Morfometrik Lamun *Enhalus acoroides* pada Substrat yang Berbeda di Pantai Tongkeina Kota Manado. *Jurnal Ilmiah Platax* vol. 5 no. 2: 210-220.
- Waycott, M., McMahon, K., Mellors, J., Calladine, A. & Kleine, D. 2004. *A Guide to Tropical Seagrasses of the Indo-West Pacific*. James Cook University, Townsville-Queensland Australia. 72 p.
- Yushra, Adiguna, G. S., Sasongko, L. W. & Widyastuti, R. P. 2020. Estimasi Stok Karbon Sedimen pada Area Padang Lamun di Kepulauan Spermonde, Sulawesi Selatan. *Manfish Journal* vol. 1 no. 1: 43-57.

- Zoffoli, M. L., Frouin, R. & Kampel, M. 2014. Water Column Correction for Coral Reef Studies by Remote Sensing. *Journal Open Access Sensors* vol. 14 no. 9: 16881-16931.
- Zurba, N. 2018. *Pengenalan Padang Lamun, Suatu Ekosistem yang Terlupakan*. Unimal Press, Aceh. 152 hal.

## **LAMPIRAN**

Lampiran 1. Data identifikasi jenis lamun di Pulau Bonetambung pada stasiun I

| TITIK | Ea | Th | Ho | Hu | Cr |
|-------|----|----|----|----|----|
| 111   | ✓  |    |    |    |    |
| 112   |    | ✓  |    |    |    |
| 113   | ✓  | ✓  |    |    |    |
| 114   | ✓  |    |    |    |    |
| 115   | ✓  |    |    |    |    |
| 121   | ✓  | ✓  |    |    |    |
| 122   | ✓  | ✓  |    |    |    |
| 123   | ✓  |    |    |    |    |
| 124   | ✓  |    |    |    |    |
| 125   | ✓  | ✓  |    |    |    |
| 131   | ✓  | ✓  |    |    |    |
| 132   | ✓  | ✓  | ✓  |    | ✓  |
| 133   |    | ✓  | ✓  | ✓  |    |
| 134   | ✓  | ✓  | ✓  | ✓  |    |
| 135   | ✓  | ✓  | ✓  |    |    |
| 141   | ✓  | ✓  |    |    |    |
| 142   |    | ✓  |    |    |    |
| 143   | ✓  |    |    |    |    |
| 144   | ✓  | ✓  |    |    |    |
| 145   | ✓  |    |    |    |    |
| 151   | ✓  | ✓  |    |    |    |
| 152   | ✓  | ✓  |    | ✓  |    |
| 153   | ✓  | ✓  |    | ✓  |    |
| 154   | ✓  | ✓  |    |    |    |
| 155   | ✓  | ✓  |    | ✓  |    |
| 161   | ✓  | ✓  |    |    |    |
| 162   | ✓  | ✓  |    | ✓  |    |
| 163   | ✓  | ✓  | ✓  |    |    |
| 164   | ✓  | ✓  |    |    |    |
| 165   | ✓  |    |    |    |    |
| 171   | ✓  | ✓  |    |    |    |
| 172   | ✓  | ✓  |    |    |    |
| 173   | ✓  |    |    |    |    |
| 174   | ✓  | ✓  |    |    |    |
| 175   | ✓  |    |    |    |    |
| 181   | ✓  | ✓  |    |    | ✓  |
| 182   | ✓  | ✓  |    |    |    |
| 183   | ✓  |    |    |    |    |
| 184   | ✓  | ✓  |    |    |    |
| 185   | ✓  | ✓  |    |    |    |
| 191   | ✓  |    |    |    |    |
| 192   | ✓  | ✓  |    |    |    |
| 193   | ✓  | ✓  |    |    |    |
| 194   | ✓  | ✓  |    |    |    |



|      |   |   |  |  |  |
|------|---|---|--|--|--|
| 195  | ✓ |   |  |  |  |
| 1101 | ✓ |   |  |  |  |
| 1102 | ✓ |   |  |  |  |
| 1103 | ✓ |   |  |  |  |
| 1104 | ✓ |   |  |  |  |
| 1105 | ✓ | ✓ |  |  |  |
| 1111 | ✓ |   |  |  |  |
| 1112 | ✓ |   |  |  |  |
| 1113 | ✓ |   |  |  |  |
| 1114 | ✓ |   |  |  |  |
| 1115 | ✓ |   |  |  |  |
| 1121 | ✓ | ✓ |  |  |  |
| 1122 | ✓ | ✓ |  |  |  |
| 1123 | ✓ | ✓ |  |  |  |
| 1124 | ✓ | ✓ |  |  |  |
| 1125 | ✓ | ✓ |  |  |  |

Lampiran 2. Data identifikasi jenis lamun di Pulau Bonetambung pada stasiun II

| TITIK | Ea | Th | Ho | Hu | Cr |
|-------|----|----|----|----|----|
| 211   | ✓  | ✓  |    |    |    |
| 212   | ✓  | ✓  |    |    |    |
| 213   | ✓  | ✓  |    |    |    |
| 214   | ✓  | ✓  |    |    |    |
| 215   | ✓  | ✓  |    |    |    |
| 221   | ✓  | ✓  |    |    |    |
| 222   | ✓  | ✓  |    |    |    |
| 223   | ✓  |    |    |    |    |
| 224   | ✓  |    |    |    |    |
| 225   | ✓  |    |    |    |    |
| 231   | ✓  | ✓  |    |    |    |
| 232   | ✓  |    |    |    |    |
| 233   | ✓  |    |    |    |    |
| 234   |    | ✓  |    |    |    |
| 235   | ✓  |    |    |    |    |
| 241   | ✓  |    |    |    |    |
| 242   | ✓  |    |    |    |    |
| 243   | ✓  | ✓  |    |    |    |
| 244   | ✓  |    |    |    |    |
| 245   |    | ✓  |    |    |    |
| 251   | ✓  |    |    |    |    |
| 252   | ✓  |    |    |    |    |
| 253   | ✓  | ✓  |    |    |    |
| 254   | ✓  |    |    |    |    |
| 255   | ✓  |    |    |    |    |
| 261   | ✓  |    |    |    |    |
| 262   | ✓  |    |    |    |    |

|      |   |   |   |  |  |
|------|---|---|---|--|--|
| 263  | ✓ |   |   |  |  |
| 264  | ✓ |   |   |  |  |
| 265  | ✓ |   |   |  |  |
| 271  | ✓ | ✓ |   |  |  |
| 272  | ✓ |   |   |  |  |
| 273  | ✓ | ✓ |   |  |  |
| 274  | ✓ | ✓ |   |  |  |
| 275  | ✓ |   |   |  |  |
| 281  | ✓ |   |   |  |  |
| 282  | ✓ |   |   |  |  |
| 283  | ✓ | ✓ |   |  |  |
| 284  | ✓ |   |   |  |  |
| 285  | ✓ |   |   |  |  |
| 291  | ✓ |   |   |  |  |
| 292  | ✓ |   |   |  |  |
| 293  | ✓ |   |   |  |  |
| 294  | ✓ | ✓ |   |  |  |
| 295  | ✓ | ✓ |   |  |  |
| 2101 | ✓ | ✓ |   |  |  |
| 2102 | ✓ | ✓ |   |  |  |
| 2103 | ✓ |   |   |  |  |
| 2104 | ✓ |   |   |  |  |
| 2105 | ✓ |   |   |  |  |
| 2111 | ✓ |   |   |  |  |
| 2112 | ✓ | ✓ |   |  |  |
| 2113 | ✓ | ✓ |   |  |  |
| 2114 | ✓ | ✓ | ✓ |  |  |
| 2115 | ✓ | ✓ |   |  |  |
| 2121 | ✓ | ✓ | ✓ |  |  |
| 2122 | ✓ |   |   |  |  |
| 2123 | ✓ | ✓ | ✓ |  |  |
| 2124 | ✓ |   |   |  |  |
| 2125 | ✓ |   |   |  |  |

Lampiran 3. Data identifikasi jenis lamun di Pulau Bonetambung pada stasiun III

| TITIK | Ea | Th | Ho | Hu | Cr |
|-------|----|----|----|----|----|
| 311   | ✓  | ✓  | ✓  |    |    |
| 312   | ✓  | ✓  |    |    |    |
| 313   | ✓  | ✓  | ✓  | ✓  |    |
| 314   | ✓  | ✓  | ✓  | ✓  |    |
| 315   | ✓  | ✓  |    | ✓  |    |
| 321   |    | ✓  | ✓  |    |    |
| 322   | ✓  | ✓  |    | ✓  |    |
| 323   |    | ✓  |    | ✓  |    |
| 324   | ✓  | ✓  | ✓  |    |    |
| 325   | ✓  | ✓  |    | ✓  |    |

|      |   |   |   |   |   |
|------|---|---|---|---|---|
| 331  |   | ✓ |   |   |   |
| 332  | ✓ | ✓ |   |   |   |
| 333  | ✓ | ✓ |   |   |   |
| 334  | ✓ | ✓ |   |   |   |
| 335  |   | ✓ |   |   |   |
| 341  |   | ✓ |   | ✓ |   |
| 342  | ✓ | ✓ |   |   |   |
| 343  |   | ✓ | ✓ |   |   |
| 344  |   | ✓ |   |   |   |
| 345  |   | ✓ |   |   |   |
| 351  |   | ✓ |   |   |   |
| 352  |   | ✓ |   |   |   |
| 353  |   | ✓ |   |   |   |
| 354  |   | ✓ |   |   |   |
| 355  |   | ✓ |   |   |   |
| 361  |   | ✓ |   |   |   |
| 362  |   | ✓ |   |   |   |
| 363  |   | ✓ |   |   |   |
| 364  |   | ✓ |   |   |   |
| 365  |   | ✓ |   |   |   |
| 371  |   | ✓ |   |   | ✓ |
| 372  | ✓ | ✓ |   |   | ✓ |
| 373  |   | ✓ |   |   | ✓ |
| 374  |   | ✓ |   | ✓ | ✓ |
| 375  | ✓ | ✓ |   |   | ✓ |
| 381  |   |   |   |   | ✓ |
| 382  | ✓ | ✓ | ✓ |   |   |
| 383  | ✓ | ✓ |   |   |   |
| 384  | ✓ |   |   |   | ✓ |
| 385  | ✓ | ✓ | ✓ |   |   |
| 391  |   | ✓ |   |   |   |
| 392  |   | ✓ | ✓ |   | ✓ |
| 393  |   | ✓ |   |   | ✓ |
| 394  | ✓ | ✓ |   |   | ✓ |
| 395  | ✓ | ✓ |   |   | ✓ |
| 3101 | ✓ | ✓ |   |   |   |
| 3102 |   | ✓ |   | ✓ |   |
| 3103 | ✓ | ✓ |   | ✓ |   |
| 3104 | ✓ | ✓ |   | ✓ |   |
| 3105 |   | ✓ |   | ✓ |   |
| 3111 | ✓ | ✓ |   |   |   |
| 3112 |   | ✓ |   |   |   |
| 3113 | ✓ | ✓ |   | ✓ |   |
| 3114 | ✓ | ✓ |   |   |   |
| 3115 | ✓ | ✓ |   |   |   |
| 3121 |   | ✓ |   |   |   |

|      |   |   |  |   |   |
|------|---|---|--|---|---|
| 3122 | ✓ |   |  |   |   |
| 3123 | ✓ | ✓ |  |   | ✓ |
| 3124 |   | ✓ |  | ✓ |   |
| 3125 |   | ✓ |  |   |   |

Lampiran 4. Data persentase tutupan lamun di Pulau Bonetambung pada stasiun I

| Koordinat  |           | Titik | Plot      |          | %Tutupan | Kategori     |
|------------|-----------|-------|-----------|----------|----------|--------------|
| x          | y         |       |           |          |          |              |
| 119,277382 | -5,03567  | 11    | 111A      | 51,4745  | 60,1024  | Sehat        |
|            |           |       | 111B      | 44,5894  |          |              |
|            |           |       | 111C      | 47,4855  |          |              |
|            |           |       | 111D      | 48,2902  |          |              |
|            |           |       | Rata-rata | 47,9599  |          |              |
|            |           |       | 112A      | 56,2106  |          |              |
|            |           |       | 112B      | 65,594   |          |              |
|            |           |       | 112C      | 62,6571  |          |              |
|            |           |       | 112D      | 57,7648  |          |              |
|            |           |       | Rata-rata | 60,55663 |          |              |
|            |           |       | 113A      | 68,5652  |          |              |
|            |           |       | 113B      | 66,1294  |          |              |
|            |           |       | 113C      | 65,3688  |          |              |
|            |           |       | 113D      | 62,2757  |          |              |
|            |           |       | Rata-rata | 65,58478 |          |              |
|            |           |       | 114A      | 65,3551  |          |              |
|            |           |       | 114B      | 58,3858  |          |              |
|            |           |       | 114C      | 62,2018  |          |              |
|            |           |       | 114D      | 65,3503  |          |              |
|            |           |       | Rata-rata | 62,82325 |          |              |
| 115A       | 63,9536   |       |           |          |          |              |
| 115B       | 62,5215   |       |           |          |          |              |
| 115C       | 62,5236   |       |           |          |          |              |
| 115D       | 65,3503   |       |           |          |          |              |
| Rata-rata  | 63,58725  |       |           |          |          |              |
|            |           |       | rata-rata |          |          |              |
| 119,277178 | -5,035704 | 12    | 121A      | 39,634   | 51,643   | Kurang Sehat |
|            |           |       | 121B      | 66,2272  |          |              |
|            |           |       | 121C      | 50,7484  |          |              |
|            |           |       | 121D      | 67,7354  |          |              |
|            |           |       | Rata-rata | 56,08625 |          |              |
|            |           |       | 122A      | 38,3929  |          |              |
|            |           |       | 122B      | 44,3462  |          |              |
|            |           |       | 122C      | 52,4379  |          |              |
|            |           |       | 122D      | 39,2905  |          |              |
|            |           |       | Rata-rata | 43,61688 |          |              |
|            |           |       | 123A      | 53,4626  |          |              |
|            |           |       | 123B      | 51,8889  |          |              |

|            |           |    |           |           |         |              |
|------------|-----------|----|-----------|-----------|---------|--------------|
|            |           |    | 123C      | 37,8641   |         |              |
|            |           |    | 123D      | 50,7733   |         |              |
|            |           |    | Rata-rata | 48,49723  |         |              |
|            |           |    | 124A      | 48,7075   |         |              |
|            |           |    | 124B      | 66,6009   |         |              |
|            |           |    | 124C      | 58,9348   |         |              |
|            |           |    | 124D      | 56,5278   |         |              |
|            |           |    | Rata-rata | 57,69275  |         |              |
|            |           |    | 125A      | 67,4379   |         |              |
|            |           |    | 125B      | 56,3478   |         |              |
|            |           |    | 125C      | 40,2792   |         |              |
|            |           |    | 125D      | 45,2234   |         |              |
|            |           |    | Rata-rata | 52,32208  |         |              |
|            |           |    |           | rata-rata |         |              |
| 119,276923 | -5,035732 | 13 | 131A      | 57,2465   | 53,2941 | Kurang Sehat |
|            |           |    | 131B      | 55,346    |         |              |
|            |           |    | 131C      | 62,4237   |         |              |
|            |           |    | 131D      | 52,4328   |         |              |
|            |           |    | Rata-rata | 56,86225  |         |              |
|            |           |    | 132A      | 45,6361   |         |              |
|            |           |    | 132B      | 44,9643   |         |              |
|            |           |    | 132C      | 48,2526   |         |              |
|            |           |    | 132D      | 55,8926   |         |              |
|            |           |    | Rata-rata | 48,6864   |         |              |
|            |           |    | 133A      | 37,1272   |         |              |
|            |           |    | 133B      | 35,4399   |         |              |
|            |           |    | 133C      | 36,4273   |         |              |
|            |           |    | 133D      | 40,2436   |         |              |
|            |           |    | Rata-rata | 37,3095   |         |              |
|            |           |    | 134A      | 63,3538   |         |              |
|            |           |    | 134B      | 63,427    |         |              |
|            |           |    | 134C      | 63,2635   |         |              |
|            |           |    | 134D      | 57,8572   |         |              |
|            |           |    | Rata-rata | 61,97538  |         |              |
|            |           |    | 135A      | 60,7802   |         |              |
|            |           |    | 135B      | 63,6185   |         |              |
|            |           |    | 135C      | 66,3463   |         |              |
|            |           |    | 135D      | 55,8038   |         |              |
|            |           |    | Rata-rata | 61,6372   |         |              |
|            |           |    |           | rata-rata |         |              |
| 119,276757 | -5,035703 | 14 | 141A      | 65,7778   | 47,884  | Kurang Sehat |
|            |           |    | 141B      | 75,7869   |         |              |
|            |           |    | 141C      | 73,5058   |         |              |
|            |           |    | 141D      | 68,4033   |         |              |
|            |           |    | Rata-rata | 70,86845  |         |              |
|            |           |    | 142A      | 20,3427   |         |              |

|           |           |    |           |           |         |              |  |
|-----------|-----------|----|-----------|-----------|---------|--------------|--|
|           |           |    | 142B      | 15,4389   |         |              |  |
|           |           |    | 142C      | 18,4386   |         |              |  |
|           |           |    | 142D      | 25,2732   |         |              |  |
|           |           |    | Rata-rata | 19,87335  |         |              |  |
|           |           |    | 143A      | 56,4354   |         |              |  |
|           |           |    | 143B      | 41,2278   |         |              |  |
|           |           |    | 143C      | 57,237    |         |              |  |
|           |           |    | 143D      | 60,3572   |         |              |  |
|           |           |    | Rata-rata | 53,81435  |         |              |  |
|           |           |    | 144A      | 57,2256   |         |              |  |
|           |           |    | 144B      | 39,5836   |         |              |  |
|           |           |    | 144C      | 50,9516   |         |              |  |
|           |           |    | 144D      | 45,581    |         |              |  |
|           |           |    | Rata-rata | 48,33545  |         |              |  |
|           |           |    | 145A      | 49,7547   |         |              |  |
|           |           |    | 145B      | 38,6428   |         |              |  |
|           |           |    | 145C      | 50,6404   |         |              |  |
|           |           |    | 145D      | 47,0764   |         |              |  |
|           |           |    | Rata-rata | 46,52858  |         |              |  |
|           |           |    |           | rata-rata |         |              |  |
| 119,27674 | -5,035513 | 15 | 151A      | 64,6901   | 55,0912 | Kurang Sehat |  |
|           |           |    | 151B      | 65,0699   |         |              |  |
|           |           |    | 151C      | 63,5849   |         |              |  |
|           |           |    | 151D      | 63,73     |         |              |  |
|           |           |    | Rata-rata | 64,26873  |         |              |  |
|           |           |    | 152A      | 52,7383   |         |              |  |
|           |           |    | 152B      | 65,3869   |         |              |  |
|           |           |    | 152C      | 63,2072   |         |              |  |
|           |           |    | 152D      | 64,4373   |         |              |  |
|           |           |    | Rata-rata | 61,44243  |         |              |  |
|           |           |    | 153A      | 22,4864   |         |              |  |
|           |           |    | 153B      | 24,5664   |         |              |  |
|           |           |    | 153C      | 45,0061   |         |              |  |
|           |           |    | 153D      | 67,527    |         |              |  |
|           |           |    | Rata-rata | 39,89648  |         |              |  |
|           |           |    | 154A      | 25,2426   |         |              |  |
|           |           |    | 154B      | 45,3431   |         |              |  |
|           |           |    | 154C      | 35,2982   |         |              |  |
|           |           |    | 154D      | 30,2849   |         |              |  |
|           |           |    | Rata-rata | 34,0422   |         |              |  |
|           |           |    | 155A      | 65,294    |         |              |  |
|           |           |    | 155B      | 80,1021   |         |              |  |
|           |           |    | 155C      | 79,1517   |         |              |  |
|           |           |    | 155D      | 78,6759   |         |              |  |
|           |           |    | Rata-rata | 75,80593  |         |              |  |
|           |           |    |           | rata-rata |         |              |  |

|            |           |    |           |          |         |              |
|------------|-----------|----|-----------|----------|---------|--------------|
| 119,276809 | -5,035343 | 16 | 161A      | 64,4447  | 50,8539 | Kurang Sehat |
|            |           |    | 161B      | 66,6123  |         |              |
|            |           |    | 161C      | 47,1462  |         |              |
|            |           |    | 161D      | 60,7374  |         |              |
|            |           |    | Rata-rata | 59,73515 |         |              |
|            |           |    | 162A      | 27,8802  |         |              |
|            |           |    | 162B      | 75,3275  |         |              |
|            |           |    | 162C      | 67,1191  |         |              |
|            |           |    | 162D      | 63,7136  |         |              |
|            |           |    | Rata-rata | 58,5101  |         |              |
|            |           |    | 163A      | 12,2482  |         |              |
|            |           |    | 163B      | 24,2391  |         |              |
|            |           |    | 163C      | 28,427   |         |              |
|            |           |    | 163D      | 27,2398  |         |              |
|            |           |    | Rata-rata | 23,03853 |         |              |
|            |           |    | 164A      | 70,3406  |         |              |
|            |           |    | 164B      | 63,0592  |         |              |
|            |           |    | 164C      | 44,7947  |         |              |
|            |           |    | 164D      | 61,8599  |         |              |
|            |           |    | Rata-rata | 60,0136  |         |              |
|            |           |    | 165A      | 59,6266  |         |              |
| 165B       | 41,8962   |    |           |          |         |              |
| 165C       | 45,5069   |    |           |          |         |              |
| 165D       | 64,8588   |    |           |          |         |              |
| Rata-rata  | 52,97213  |    |           |          |         |              |
|            | rata-rata |    |           |          |         |              |
| 119,276988 | -5,035308 | 17 | 171A      | 24,6228  | 28,5268 | Miskin       |
|            |           |    | 171B      | 20,0988  |         |              |
|            |           |    | 171C      | 26,0869  |         |              |
|            |           |    | 171D      | 28,2424  |         |              |
|            |           |    | Rata-rata | 24,76273 |         |              |
|            |           |    | 172A      | 27,3616  |         |              |
|            |           |    | 172B      | 24,1911  |         |              |
|            |           |    | 172C      | 21,2386  |         |              |
|            |           |    | 172D      | 35,9689  |         |              |
|            |           |    | Rata-rata | 27,19005 |         |              |
|            |           |    | 173A      | 25,4307  |         |              |
|            |           |    | 173B      | 35,2594  |         |              |
|            |           |    | 173C      | 27,5398  |         |              |
|            |           |    | 173D      | 23,2921  |         |              |
|            |           |    | Rata-rata | 27,8805  |         |              |
|            |           |    | 174A      | 22,4901  |         |              |
|            |           |    | 174B      | 26,1819  |         |              |
|            |           |    | 174C      | 28,8663  |         |              |
|            |           |    | 174D      | 28,8574  |         |              |
| Rata-rata  | 26,59893  |    |           |          |         |              |

|            |           |    |           |           |         |              |
|------------|-----------|----|-----------|-----------|---------|--------------|
|            |           |    | 175A      | 28,4398   |         |              |
|            |           |    | 175B      | 37,2952   |         |              |
|            |           |    | 175C      | 34,2378   |         |              |
|            |           |    | 175D      | 42,2493   |         |              |
|            |           |    | Rata-rata | 35,55553  |         |              |
|            |           |    |           | rata-rata |         |              |
| 119,277172 | -5,035253 | 18 | 181A      | 65,824    | 60,0198 | Sehat        |
|            |           |    | 181B      | 68,0996   |         |              |
|            |           |    | 181C      | 65,3245   |         |              |
|            |           |    | 181D      | 66,4945   |         |              |
|            |           |    | Rata-rata | 66,43565  |         |              |
|            |           |    | 182A      | 65,5063   |         |              |
|            |           |    | 182B      | 68,7246   |         |              |
|            |           |    | 182C      | 66,4558   |         |              |
|            |           |    | 182D      | 69,1508   |         |              |
|            |           |    | Rata-rata | 67,45938  |         |              |
|            |           |    | 183A      | 52,278    |         |              |
|            |           |    | 183B      | 56,4339   |         |              |
|            |           |    | 183C      | 53,3722   |         |              |
|            |           |    | 183D      | 60,488    |         |              |
|            |           |    | Rata-rata | 55,64303  |         |              |
|            |           |    | 184A      | 50,3892   |         |              |
|            |           |    | 184B      | 48,3412   |         |              |
|            |           |    | 184C      | 49,5305   |         |              |
|            |           |    | 184D      | 52,0121   |         |              |
|            |           |    | Rata-rata | 50,06825  |         |              |
|            |           |    | 185A      | 65,9833   |         |              |
|            |           |    | 185B      | 57,5267   |         |              |
|            |           |    | 185C      | 60,7127   |         |              |
|            |           |    | 185D      | 57,7483   |         |              |
|            |           |    | Rata-rata | 60,49275  |         |              |
|            |           |    |           | rata-rata |         |              |
| 119,277336 | -5,035167 | 19 | 191A      | 63,066    | 51,3432 | Kurang Sehat |
|            |           |    | 191B      | 59,2797   |         |              |
|            |           |    | 191C      | 65,2761   |         |              |
|            |           |    | 191D      | 60,2652   |         |              |
|            |           |    | Rata-rata | 61,97175  |         |              |
|            |           |    | 192A      | 47,2756   |         |              |
|            |           |    | 192B      | 54,0493   |         |              |
|            |           |    | 192C      | 64,6706   |         |              |
|            |           |    | 192D      | 44,7138   |         |              |
|            |           |    | Rata-rata | 52,67733  |         |              |
|            |           |    | 193A      | 68,1857   |         |              |
|            |           |    | 193B      | 65,6162   |         |              |
|            |           |    | 193C      | 64,2252   |         |              |
|            |           |    | 193D      | 64,9386   |         |              |



|            |           |     |           |           |         |              |
|------------|-----------|-----|-----------|-----------|---------|--------------|
|            |           |     | Rata-rata | 65,74143  |         |              |
|            |           |     | 194A      | 35,3092   |         |              |
|            |           |     | 194B      | 38,2548   |         |              |
|            |           |     | 194C      | 25,7623   |         |              |
|            |           |     | 194D      | 33,3491   |         |              |
|            |           |     | Rata-rata | 33,16885  |         |              |
|            |           |     | 195A      | 40,2391   |         |              |
|            |           |     | 195B      | 42,5484   |         |              |
|            |           |     | 195C      | 46,4022   |         |              |
|            |           |     | 195D      | 43,437    |         |              |
|            |           |     | Rata-rata | 43,15668  |         |              |
|            |           |     |           | rata-rata |         |              |
| 119,277363 | -5,035339 | 110 | 1101A     | 59,2504   | 49,8615 | Kurang Sehat |
|            |           |     | 1101B     | 57,9884   |         |              |
|            |           |     | 1101C     | 41,6764   |         |              |
|            |           |     | 1101D     | 46,5174   |         |              |
|            |           |     | Rata-rata | 51,35815  |         |              |
|            |           |     | 1102A     | 46,5244   |         |              |
|            |           |     | 1102B     | 65,2102   |         |              |
|            |           |     | 1102C     | 59,322    |         |              |
|            |           |     | 1102D     | 64,7202   |         |              |
|            |           |     | Rata-rata | 58,9442   |         |              |
|            |           |     | 1103A     | 62,2799   |         |              |
|            |           |     | 1103B     | 55,6272   |         |              |
|            |           |     | 1103C     | 62,6422   |         |              |
|            |           |     | 1103D     | 55,7044   |         |              |
|            |           |     | Rata-rata | 59,06343  |         |              |
|            |           |     | 1104A     | 48,4927   |         |              |
|            |           |     | 1104B     | 52,0381   |         |              |
|            |           |     | 1104C     | 31,2701   |         |              |
|            |           |     | 1104D     | 35,1013   |         |              |
|            |           |     | Rata-rata | 41,72555  |         |              |
|            |           |     | 1105A     | 40,279    |         |              |
|            |           |     | 1105B     | 35,3121   |         |              |
|            |           |     | 1105C     | 33,933    |         |              |
|            |           |     | 1105D     | 43,3407   |         |              |
|            |           |     | Rata-rata | 38,2162   |         |              |
|            |           |     |           | rata-rata |         |              |
| 119,277544 | -5,03525  | 111 | 1111A     | 38,4767   | 47,0659 | Kurang Sehat |
|            |           |     | 1111B     | 25,7682   |         |              |
|            |           |     | 1111C     | 41,8859   |         |              |
|            |           |     | 1111D     | 40,5869   |         |              |
|            |           |     | Rata-rata | 36,67943  |         |              |
|            |           |     | 1112A     | 46,7633   |         |              |
|            |           |     | 1112B     | 43,3627   |         |              |
|            |           |     | 1112C     | 52,2597   |         |              |

|            |           |     |           |           |         |        |
|------------|-----------|-----|-----------|-----------|---------|--------|
|            |           |     | 1112D     | 50,1317   |         |        |
|            |           |     | Rata-rata | 48,12935  |         |        |
|            |           |     | 1113A     | 49,9361   |         |        |
|            |           |     | 1113B     | 43,5063   |         |        |
|            |           |     | 1113C     | 25,3836   |         |        |
|            |           |     | 1113D     | 51,3358   |         |        |
|            |           |     | Rata-rata | 42,54045  |         |        |
|            |           |     | 1114A     | 52,4598   |         |        |
|            |           |     | 1114B     | 43,6302   |         |        |
|            |           |     | 1114C     | 57,3053   |         |        |
|            |           |     | 1114D     | 46,554    |         |        |
|            |           |     | Rata-rata | 49,98733  |         |        |
|            |           |     | 1115A     | 51,8248   |         |        |
|            |           |     | 1115B     | 65,288    |         |        |
|            |           |     | 1115C     | 44,4506   |         |        |
|            |           |     | 1115D     | 70,4089   |         |        |
|            |           |     | Rata-rata | 57,99308  |         |        |
|            |           |     |           | rata-rata |         |        |
| 119,277722 | -5,035424 | 112 | 1121A     | 28,3827   | 29,9276 | Miskin |
|            |           |     | 1121B     | 25,8006   |         |        |
|            |           |     | 1121C     | 36,526    |         |        |
|            |           |     | 1121D     | 32,4872   |         |        |
|            |           |     | Rata-rata | 30,79913  |         |        |
|            |           |     | 1122A     | 18,212    |         |        |
|            |           |     | 1122B     | 27,2391   |         |        |
|            |           |     | 1122C     | 23,3443   |         |        |
|            |           |     | 1122D     | 20,0479   |         |        |
|            |           |     | Rata-rata | 22,21083  |         |        |
|            |           |     | 1123A     | 45,1393   |         |        |
|            |           |     | 1123B     | 37,6022   |         |        |
|            |           |     | 1123C     | 35,4102   |         |        |
|            |           |     | 1123D     | 41,1726   |         |        |
|            |           |     | Rata-rata | 39,83108  |         |        |
|            |           |     | 1124A     | 23,3982   |         |        |
|            |           |     | 1124B     | 21,297    |         |        |
|            |           |     | 1124C     | 18,2435   |         |        |
|            |           |     | 1124D     | 22,1036   |         |        |
|            |           |     | Rata-rata | 21,26058  |         |        |
|            |           |     | 1125A     | 37,5006   |         |        |
|            |           |     | 1125B     | 34,1612   |         |        |
|            |           |     | 1125C     | 38,5985   |         |        |
|            |           |     | 1125D     | 31,8854   |         |        |
|            |           |     | Rata-rata | 35,53643  |         |        |
|            |           |     |           | rata-rata |         |        |

Lampiran 5. Data persentase tutupan lamun di Pulau Bonetambung pada stasiun II

| Koordinat  |           | Titik | Plot      |         | %Tutupan  | Kategori     |
|------------|-----------|-------|-----------|---------|-----------|--------------|
| x          | y         |       |           |         |           |              |
| 119,278346 | -5,037226 | 21    | 211A      | 63,9536 | 61,173555 | Sehat        |
|            |           |       | 211B      | 62,5215 |           |              |
|            |           |       | 211C      | 62,5236 |           |              |
|            |           |       | 211D      | 67,7976 |           |              |
|            |           |       | Rata-rata | 64,1991 |           |              |
|            |           |       | 212A      | 53,594  |           |              |
|            |           |       | 212B      | 55,8571 |           |              |
|            |           |       | 212C      | 55,9948 |           |              |
|            |           |       | 212D      | 64,3697 |           |              |
|            |           |       | Rata-rata | 57,4539 |           |              |
|            |           |       | 213A      | 63,8871 |           |              |
|            |           |       | 213B      | 61,1252 |           |              |
|            |           |       | 213C      | 60,9064 |           |              |
|            |           |       | 213D      | 59,7651 |           |              |
|            |           |       | Rata-rata | 61,421  |           |              |
|            |           |       | 214A      | 62,6193 |           |              |
|            |           |       | 214B      | 59,9679 |           |              |
|            |           |       | 214C      | 59,7523 |           |              |
|            |           |       | 214D      | 66,9758 |           |              |
|            |           |       | Rata-rata | 62,3288 |           |              |
|            |           |       | 215A      | 60,4958 |           |              |
| 215B       | 59,433    |       |           |         |           |              |
| 215C       | 60,3271   |       |           |         |           |              |
| 215D       | 61,6042   |       |           |         |           |              |
| Rata-rata  | 60,465    |       |           |         |           |              |
|            |           |       | Rata-rata |         |           |              |
| 119,278437 | -5,037057 | 22    | 221A      | 60,5254 | 47,413735 | Kurang Sehat |
|            |           |       | 221B      | 59,8879 |           |              |
|            |           |       | 221C      | 57,9321 |           |              |
|            |           |       | 221D      | 66,4526 |           |              |
|            |           |       | Rata-rata | 61,1995 |           |              |
|            |           |       | 222A      | 31,3292 |           |              |
|            |           |       | 222B      | 27,243  |           |              |
|            |           |       | 222C      | 32,4301 |           |              |
|            |           |       | 222D      | 34,5097 |           |              |
|            |           |       | Rata-rata | 31,378  |           |              |
|            |           |       | 223A      | 64,6029 |           |              |
|            |           |       | 223B      | 59,0408 |           |              |
|            |           |       | 223C      | 53,5901 |           |              |
|            |           |       | 223D      | 63,2925 |           |              |
|            |           |       | Rata-rata | 60,1316 |           |              |
|            |           |       | 224A      | 48,9981 |           |              |
| 224B       | 54,6673   |       |           |         |           |              |

|            |           |    |           |           |          |              |
|------------|-----------|----|-----------|-----------|----------|--------------|
|            |           |    | 224C      | 54,8336   |          |              |
|            |           |    | 224D      | 46,906    |          |              |
|            |           |    | Rata-rata | 51,3513   |          |              |
|            |           |    | 225A      | 38,238    |          |              |
|            |           |    | 225B      | 34,4871   |          |              |
|            |           |    | 225C      | 31,9056   |          |              |
|            |           |    | 225D      | 27,4027   |          |              |
|            |           |    | Rata-rata | 33,0084   |          |              |
|            |           |    |           | rata-rata |          |              |
| 119,278533 | -5,036884 | 23 | 231A      | 22,2972   | 48,8995  | Kurang Sehat |
|            |           |    | 231B      | 28,4286   |          |              |
|            |           |    | 231C      | 25,3017   |          |              |
|            |           |    | 231D      | 34,2085   |          |              |
|            |           |    | Rata-rata | 27,559    |          |              |
|            |           |    | 232A      | 49,3747   |          |              |
|            |           |    | 232B      | 58,7581   |          |              |
|            |           |    | 232C      | 57,789    |          |              |
|            |           |    | 232D      | 64,7175   |          |              |
|            |           |    | Rata-rata | 57,6598   |          |              |
|            |           |    | 233A      | 62,4535   |          |              |
|            |           |    | 233B      | 63,0712   |          |              |
|            |           |    | 233C      | 55,4522   |          |              |
|            |           |    | 233D      | 56,3077   |          |              |
|            |           |    | Rata-rata | 59,3212   |          |              |
|            |           |    | 234A      | 48,3374   |          |              |
|            |           |    | 234B      | 49,8986   |          |              |
|            |           |    | 234C      | 47,3694   |          |              |
|            |           |    | 234D      | 47,8292   |          |              |
|            |           |    | Rata-rata | 48,3587   |          |              |
|            |           |    | 235A      | 46,7487   |          |              |
|            |           |    | 235B      | 55,0847   |          |              |
|            |           |    | 235C      | 51,5908   |          |              |
|            |           |    | 235D      | 52,9713   |          |              |
|            |           |    | Rata-rata | 51,5989   |          |              |
|            |           |    |           | rata-rata |          |              |
| 119,278602 | -5,036764 | 24 | 241A      | 57,2206   | 42,72491 | Kurang Sehat |
|            |           |    | 241B      | 53,4631   |          |              |
|            |           |    | 241C      | 61,7372   |          |              |
|            |           |    | 241D      | 56,5769   |          |              |
|            |           |    | Rata-rata | 57,2495   |          |              |
|            |           |    | 242A      | 44,8199   |          |              |
|            |           |    | 242B      | 32,9263   |          |              |
|            |           |    | 242C      | 37,6044   |          |              |
|            |           |    | 242D      | 37,9858   |          |              |
|            |           |    | Rata-rata | 38,3341   |          |              |
|            |           |    | 243A      | 34,418    |          |              |

|            |           |    |           |           |          |              |
|------------|-----------|----|-----------|-----------|----------|--------------|
|            |           |    | 243B      | 41,4392   |          |              |
|            |           |    | 243C      | 41,1503   |          |              |
|            |           |    | 243D      | 40,3999   |          |              |
|            |           |    | Rata-rata | 39,3519   |          |              |
|            |           |    | 244A      | 40,6541   |          |              |
|            |           |    | 244B      | 36,8689   |          |              |
|            |           |    | 244C      | 35,7918   |          |              |
|            |           |    | 244D      | 40,5987   |          |              |
|            |           |    | Rata-rata | 38,4784   |          |              |
|            |           |    | 245A      | 41,2381   |          |              |
|            |           |    | 245B      | 38,1786   |          |              |
|            |           |    | 245C      | 39,8705   |          |              |
|            |           |    | 245D      | 41,5559   |          |              |
|            |           |    | Rata-rata | 40,2108   |          |              |
|            |           |    |           | rata-rata |          |              |
| 119,278633 | -5,036659 | 25 | 251A      | 40,8367   | 38,05156 | Kurang Sehat |
|            |           |    | 251B      | 42,7915   |          |              |
|            |           |    | 251C      | 42,6746   |          |              |
|            |           |    | 251D      | 42,0907   |          |              |
|            |           |    | Rata-rata | 42,0984   |          |              |
|            |           |    | 252A      | 33,3956   |          |              |
|            |           |    | 252B      | 35,7589   |          |              |
|            |           |    | 252C      | 37,2503   |          |              |
|            |           |    | 252D      | 35,5973   |          |              |
|            |           |    | Rata-rata | 35,5005   |          |              |
|            |           |    | 253A      | 39,1248   |          |              |
|            |           |    | 253B      | 36,4023   |          |              |
|            |           |    | 253C      | 56,6567   |          |              |
|            |           |    | 253D      | 47,1948   |          |              |
|            |           |    | Rata-rata | 44,8447   |          |              |
|            |           |    | 254A      | 31,5834   |          |              |
|            |           |    | 254B      | 32,44     |          |              |
|            |           |    | 254C      | 35,3134   |          |              |
|            |           |    | 254D      | 32,5537   |          |              |
|            |           |    | Rata-rata | 32,9726   |          |              |
|            |           |    | 255A      | 31,4015   |          |              |
|            |           |    | 255B      | 36,8974   |          |              |
|            |           |    | 255C      | 35,1795   |          |              |
|            |           |    | 255D      | 35,8881   |          |              |
|            |           |    | Rata-rata | 34,8416   |          |              |
|            |           |    |           | rata-rata |          |              |
| 119,278626 | -5,036539 | 26 | 261A      | 42,1861   | 40,57875 | Kurang Sehat |
|            |           |    | 261B      | 42,1183   |          |              |
|            |           |    | 261C      | 41,6039   |          |              |
|            |           |    | 261D      | 41,8161   |          |              |
|            |           |    | Rata-rata | 41,9311   |          |              |

|            |           |    |           |           |          |              |  |
|------------|-----------|----|-----------|-----------|----------|--------------|--|
|            |           |    | 262A      | 38,2806   |          |              |  |
|            |           |    | 262B      | 36,8926   |          |              |  |
|            |           |    | 262C      | 50,2804   |          |              |  |
|            |           |    | 262D      | 50,6665   |          |              |  |
|            |           |    | Rata-rata | 44,03     |          |              |  |
|            |           |    | 263A      | 39,8559   |          |              |  |
|            |           |    | 263B      | 40,0317   |          |              |  |
|            |           |    | 263C      | 40,7691   |          |              |  |
|            |           |    | 263D      | 41,8795   |          |              |  |
|            |           |    | Rata-rata | 40,6341   |          |              |  |
|            |           |    | 264A      | 35,9489   |          |              |  |
|            |           |    | 264B      | 36,991    |          |              |  |
|            |           |    | 264C      | 38,2637   |          |              |  |
|            |           |    | 264D      | 46,3479   |          |              |  |
|            |           |    | Rata-rata | 39,3879   |          |              |  |
|            |           |    | 265A      | 37,1652   |          |              |  |
|            |           |    | 265B      | 37,939    |          |              |  |
|            |           |    | 265C      | 38,404    |          |              |  |
|            |           |    | 265D      | 34,1346   |          |              |  |
|            |           |    | Rata-rata | 36,9107   |          |              |  |
|            |           |    |           | rata-rata |          |              |  |
| 119,278633 | -5,036439 | 27 | 271A      | 56,3644   | 40,06734 | Kurang Sehat |  |
|            |           |    | 271B      | 56,0519   |          |              |  |
|            |           |    | 271C      | 56,9374   |          |              |  |
|            |           |    | 271D      | 57,3041   |          |              |  |
|            |           |    | Rata-rata | 56,6645   |          |              |  |
|            |           |    | 272A      | 50,8171   |          |              |  |
|            |           |    | 272B      | 43,2673   |          |              |  |
|            |           |    | 272C      | 58,4061   |          |              |  |
|            |           |    | 272D      | 34,7174   |          |              |  |
|            |           |    | Rata-rata | 46,802    |          |              |  |
|            |           |    | 273A      | 40,33     |          |              |  |
|            |           |    | 273B      | 49,7901   |          |              |  |
|            |           |    | 273C      | 49,9894   |          |              |  |
|            |           |    | 273D      | 39,5335   |          |              |  |
|            |           |    | Rata-rata | 44,9108   |          |              |  |
|            |           |    | 274A      | 19,816    |          |              |  |
|            |           |    | 274B      | 24,0857   |          |              |  |
|            |           |    | 274C      | 26,4563   |          |              |  |
|            |           |    | 274D      | 8,6677    |          |              |  |
|            |           |    | Rata-rata | 19,7564   |          |              |  |
|            |           |    | 275A      | 39,1685   |          |              |  |
|            |           |    | 275B      | 27,9489   |          |              |  |
|            |           |    | 275C      | 33,7481   |          |              |  |
|            |           |    | 275D      | 27,9469   |          |              |  |
|            |           |    | Rata-rata | 32,2031   |          |              |  |

|            |           |    |           |           |           |        |
|------------|-----------|----|-----------|-----------|-----------|--------|
|            |           |    |           | rata-rata |           |        |
| 119,278629 | -5,036314 | 28 | 281A      | 21,6106   | 29,90887  | Miskin |
|            |           |    | 281B      | 25,7917   |           |        |
|            |           |    | 281C      | 33,317    |           |        |
|            |           |    | 281D      | 22,673    |           |        |
|            |           |    | Rata-rata | 25,8481   |           |        |
|            |           |    | 282A      | 25,6747   |           |        |
|            |           |    | 282B      | 34,7273   |           |        |
|            |           |    | 282C      | 36,4076   |           |        |
|            |           |    | 282D      | 21,5344   |           |        |
|            |           |    | Rata-rata | 29,586    |           |        |
|            |           |    | 283A      | 34,8325   |           |        |
|            |           |    | 283B      | 35,5554   |           |        |
|            |           |    | 283C      | 29,2839   |           |        |
|            |           |    | 283D      | 35,6785   |           |        |
|            |           |    | Rata-rata | 33,8376   |           |        |
|            |           |    | 284A      | 34,7678   |           |        |
|            |           |    | 284B      | 23,078    |           |        |
|            |           |    | 284C      | 25,5849   |           |        |
|            |           |    | 285D      | 29,7522   |           |        |
|            |           |    | Rata-rata | 28,2957   |           |        |
|            |           |    | 285A      | 34,4426   |           |        |
|            |           |    | 285B      | 31,8993   |           |        |
| 285C       | 33,1517   |    |           |           |           |        |
| 285D       | 28,4143   |    |           |           |           |        |
| Rata-rata  | 31,977    |    |           |           |           |        |
|            |           |    |           | rata-rata |           |        |
| 119,278637 | -5,036176 | 29 | 291A      | 26,5063   | 28,488795 | Miskin |
|            |           |    | 291B      | 23,7175   |           |        |
|            |           |    | 291C      | 26,8399   |           |        |
|            |           |    | Rata-rata | 40,1544   |           |        |
|            |           |    | Rata-rata | 29,3045   |           |        |
|            |           |    | 292A      | 25,193    |           |        |
|            |           |    | 292B      | 30,2009   |           |        |
|            |           |    | 292C      | 39,4147   |           |        |
|            |           |    | 292D      | 39,6149   |           |        |
|            |           |    | Rata-rata | 33,6059   |           |        |
|            |           |    | 293A      | 22,8665   |           |        |
|            |           |    | 293B      | 35,8387   |           |        |
|            |           |    | 293C      | 27,219    |           |        |
|            |           |    | 293D      | 27,5412   |           |        |
|            |           |    | Rata-rata | 28,3664   |           |        |
|            |           |    | 294A      | 22,6799   |           |        |
|            |           |    | 294B      | 26,4659   |           |        |
|            |           |    | 294C      | 25,1917   |           |        |
| 294D       | 25,3567   |    |           |           |           |        |

|            |           |     |           |           |           |        |
|------------|-----------|-----|-----------|-----------|-----------|--------|
|            |           |     | Rata-rata | 24,9236   |           |        |
|            |           |     | 295A      | 22,907    |           |        |
|            |           |     | 295B      | 35,7317   |           |        |
|            |           |     | 295C      | 22,2879   |           |        |
|            |           |     | 295D      | 24,0481   |           |        |
|            |           |     | Rata-rata | 26,2437   |           |        |
|            |           |     |           | rata-rata |           |        |
| 119,278559 | -5,036072 | 210 | 2101A     | 29,9565   | 29,83597  | Miskin |
|            |           |     | 2101B     | 34,3918   |           |        |
|            |           |     | 2101C     | 32,4537   |           |        |
|            |           |     | 2101D     | 36,281    |           |        |
|            |           |     | Rata-rata | 33,2708   |           |        |
|            |           |     | 2102A     | 35,7087   |           |        |
|            |           |     | 2102B     | 35,2242   |           |        |
|            |           |     | 2102C     | 36,1995   |           |        |
|            |           |     | 2102D     | 34,7061   |           |        |
|            |           |     | Rata-rata | 35,4596   |           |        |
|            |           |     | 2103A     | 21,1584   |           |        |
|            |           |     | 2103B     | 16,2623   |           |        |
|            |           |     | 2103C     | 24,7038   |           |        |
|            |           |     | 2103D     | 24,1665   |           |        |
|            |           |     | Rata-rata | 21,5728   |           |        |
|            |           |     | 2104A     | 33,267    |           |        |
|            |           |     | 2104B     | 36,2576   |           |        |
|            |           |     | 2104C     | 27,9595   |           |        |
|            |           |     | 2104D     | 40,5702   |           |        |
|            |           |     | Rata-rata | 34,5136   |           |        |
|            |           |     | 2105A     | 24,6586   |           |        |
|            |           |     | 2105B     | 26,3979   |           |        |
|            |           |     | 2105C     | 23,3513   |           |        |
|            |           |     | 2105D     | 23,0448   |           |        |
|            |           |     | Rata-rata | 24,3632   |           |        |
|            |           |     |           | rata-rata |           |        |
| 119,278474 | -5,036005 | 211 | 2111A     | 26,2377   | 64,100305 | Sehat  |
|            |           |     | 2111B     | 24,0561   |           |        |
|            |           |     | 2111C     | 25,6889   |           |        |
|            |           |     | 2111D     | 25,2047   |           |        |
|            |           |     | Rata-rata | 25,2969   |           |        |
|            |           |     | 2112A     | 70,5209   |           |        |
|            |           |     | 2112B     | 79,8106   |           |        |
|            |           |     | 2112C     | 92,1342   |           |        |
|            |           |     | 2112D     | 88,3541   |           |        |
|            |           |     | Rata-rata | 82,705    |           |        |
|            |           |     | 2113A     | 86,67     |           |        |
|            |           |     | 2113B     | 87,3836   |           |        |
|            |           |     | 2113C     | 87,6222   |           |        |



|            |           |     |           |           |           |              |
|------------|-----------|-----|-----------|-----------|-----------|--------------|
|            |           |     | 2113D     | 80,1502   |           |              |
|            |           |     | Rata-rata | 85,4565   |           |              |
|            |           |     | 2114A     | 76,793    |           |              |
|            |           |     | 2114B     | 69,3938   |           |              |
|            |           |     | 2114C     | 69,4765   |           |              |
|            |           |     | 2114D     | 68,4063   |           |              |
|            |           |     | Rata-rata | 71,0174   |           |              |
|            |           |     | 2115A     | 60,0341   |           |              |
|            |           |     | 2115B     | 55,222    |           |              |
|            |           |     | 2115C     | 53,8346   |           |              |
|            |           |     | 2115D     | 55,0126   |           |              |
|            |           |     | Rata-rata | 56,0258   |           |              |
|            |           |     |           | rata-rata |           |              |
| 119,278527 | -5,035882 | 212 | 2121A     | 68,4285   | 44,821475 | Kurang Sehat |
|            |           |     | 2121B     | 66,9555   |           |              |
|            |           |     | 2121C     | 65,6822   |           |              |
|            |           |     | 2121D     | 60,0575   |           |              |
|            |           |     | Rata-rata | 65,2809   |           |              |
|            |           |     | 2122A     | 39,0238   |           |              |
|            |           |     | 2122B     | 40,6383   |           |              |
|            |           |     | 2122C     | 38,881    |           |              |
|            |           |     | 2122D     | 38,2078   |           |              |
|            |           |     | Rata-rata | 39,1877   |           |              |
|            |           |     | 2123A     | 27,1439   |           |              |
|            |           |     | 2123B     | 25,2796   |           |              |
|            |           |     | 2123C     | 44,6305   |           |              |
|            |           |     | 2123D     | 43,1496   |           |              |
|            |           |     | Rata-rata | 35,0509   |           |              |
|            |           |     | 2124A     | 44,1938   |           |              |
|            |           |     | 2124B     | 28,9025   |           |              |
|            |           |     | 2124C     | 49,3224   |           |              |
|            |           |     | 2124D     | 37,9489   |           |              |
|            |           |     | Rata-rata | 40,0919   |           |              |
|            |           |     | 2125A     | 25,2502   |           |              |
|            |           |     | 2125B     | 60,9292   |           |              |
|            |           |     | 2125C     | 46,1314   |           |              |
|            |           |     | 2125D     | 45,6729   |           |              |
|            |           |     | Rata-rata | 44,4959   |           |              |
|            |           |     |           | rata-rata |           |              |

Lampiran 6. Data persentaseutupan lamun di Pulau Bonetambung pada stasiun III

| Koordinat  |           | Titik | Plot |         | %Tutupan | Kategori |
|------------|-----------|-------|------|---------|----------|----------|
| x          | y         |       |      |         |          |          |
| 119,277349 | -5,037697 | 31    | 311A | 61,1976 | 61,3111  | Sehat    |
|            |           |       | 311B | 65,6054 |          |          |
|            |           |       | 311C | 58,7961 |          |          |

|            |           |    |           |           |         |       |
|------------|-----------|----|-----------|-----------|---------|-------|
|            |           |    | 311D      | 57,346    |         |       |
|            |           |    | Rata-rata | 60,7363   |         |       |
|            |           |    | 312A      | 63,1942   |         |       |
|            |           |    | 312B      | 65,674    |         |       |
|            |           |    | 312C      | 61,1378   |         |       |
|            |           |    | 312D      | 58,3172   |         |       |
|            |           |    | Rata-rata | 62,0808   |         |       |
|            |           |    | 313A      | 63,0326   |         |       |
|            |           |    | 313B      | 60,4883   |         |       |
|            |           |    | 313C      | 60,0259   |         |       |
|            |           |    | 313D      | 58,9215   |         |       |
|            |           |    | Rata-rata | 60,6171   |         |       |
|            |           |    | 314A      | 85,5057   |         |       |
|            |           |    | 314B      | 65,5971   |         |       |
|            |           |    | 314C      | 64,9404   |         |       |
|            |           |    | 314D      | 78,6161   |         |       |
|            |           |    | Rata-rata | 73,6648   |         |       |
|            |           |    | 315A      | 53,5482   |         |       |
|            |           |    | 315B      | 42,7184   |         |       |
|            |           |    | 315C      | 45,1256   |         |       |
|            |           |    | 315D      | 56,4334   |         |       |
|            |           |    | Rata-rata | 49,4564   |         |       |
|            |           |    |           | rata-rata |         |       |
| 119,277125 | -5,037657 | 32 | 321A      | 76,7102   | 67,2742 | Sehat |
|            |           |    | 321B      | 76,1715   |         |       |
|            |           |    | 321C      | 79,6115   |         |       |
|            |           |    | 321D      | 79,6558   |         |       |
|            |           |    | Rata-rata | 78,0373   |         |       |
|            |           |    | 322A      | 66,3872   |         |       |
|            |           |    | 322B      | 62,2586   |         |       |
|            |           |    | 322C      | 59,68     |         |       |
|            |           |    | 322D      | 65,8093   |         |       |
|            |           |    | Rata-rata | 63,5338   |         |       |
|            |           |    | 323A      | 64,5143   |         |       |
|            |           |    | 323B      | 66,9519   |         |       |
|            |           |    | 323C      | 64,0872   |         |       |
|            |           |    | 323D      | 66,2036   |         |       |
|            |           |    | Rata-rata | 65,4393   |         |       |
|            |           |    | 324A      | 64,1955   |         |       |
|            |           |    | 324B      | 64,9246   |         |       |
|            |           |    | 324C      | 62,9809   |         |       |
|            |           |    | 324D      | 56,2317   |         |       |
|            |           |    | Rata-rata | 62,0832   |         |       |
|            |           |    | 325A      | 66,825    |         |       |
|            |           |    | 325B      | 64,6436   |         |       |
|            |           |    | 325C      | 69,8348   |         |       |

|            |           |    |           |           |         |              |
|------------|-----------|----|-----------|-----------|---------|--------------|
|            |           |    | 325D      | 67,8067   |         |              |
|            |           |    | Rata-rata | 67,2775   |         |              |
|            |           |    |           | rata-rata |         |              |
| 119,277009 | -5,03764  | 33 | 331A      | 63,4196   | 58,4611 | Kurang Sehat |
|            |           |    | 331B      | 60,4331   |         |              |
|            |           |    | 331C      | 59,9816   |         |              |
|            |           |    | 331D      | 57,7446   |         |              |
|            |           |    | Rata-rata | 60,3947   |         |              |
|            |           |    | 332A      | 60,8592   |         |              |
|            |           |    | 332B      | 64,7234   |         |              |
|            |           |    | 332C      | 63,8539   |         |              |
|            |           |    | 332D      | 57,4401   |         |              |
|            |           |    | Rata-rata | 61,7192   |         |              |
|            |           |    | 333A      | 52,302    |         |              |
|            |           |    | 333B      | 48,2409   |         |              |
|            |           |    | 333C      | 44,5418   |         |              |
|            |           |    | 333D      | 55,7605   |         |              |
|            |           |    | Rata-rata | 50,2113   |         |              |
|            |           |    | 334A      | 60,4963   |         |              |
|            |           |    | 334B      | 54,192    |         |              |
|            |           |    | 334C      | 64,1457   |         |              |
|            |           |    | 334D      | 65,5615   |         |              |
|            |           |    | Rata-rata | 61,0989   |         |              |
|            |           |    | 335A      | 59,9418   |         |              |
|            |           |    | 335B      | 60,4135   |         |              |
|            |           |    | 335C      | 55,1888   |         |              |
|            |           |    | 335D      | 59,9815   |         |              |
|            |           |    | Rata-rata | 58,8814   |         |              |
|            |           |    |           | rata-rata |         |              |
| 119,276988 | -5,037522 | 34 | 341A      | 61,3459   | 61,8224 | Sehat        |
|            |           |    | 341B      | 62,5379   |         |              |
|            |           |    | 341C      | 59,5301   |         |              |
|            |           |    | 341D      | 60,2884   |         |              |
|            |           |    | Rata-rata | 60,9256   |         |              |
|            |           |    | 342A      | 63,7435   |         |              |
|            |           |    | 342B      | 64,1506   |         |              |
|            |           |    | 342C      | 68,3628   |         |              |
|            |           |    | 342D      | 61,6509   |         |              |
|            |           |    | Rata-rata | 64,477    |         |              |
|            |           |    | 343A      | 54,3972   |         |              |
|            |           |    | 343B      | 56,291    |         |              |
|            |           |    | 343C      | 60,5475   |         |              |
|            |           |    | 343D      | 53,4589   |         |              |
|            |           |    | Rata-rata | 56,1737   |         |              |
|            |           |    | 344A      | 60,7308   |         |              |
|            |           |    | 344B      | 49,6729   |         |              |

|            |           |    |           |           |         |              |
|------------|-----------|----|-----------|-----------|---------|--------------|
|            |           |    | 344C      | 66,4933   |         |              |
|            |           |    | 344D      | 58,7425   |         |              |
|            |           |    | Rata-rata | 58,9099   |         |              |
|            |           |    | 345A      | 63,8689   |         |              |
|            |           |    | 345B      | 59,1434   |         |              |
|            |           |    | 345C      | 68,7133   |         |              |
|            |           |    | 345D      | 82,7779   |         |              |
|            |           |    | Rata-rata | 68,6259   |         |              |
|            |           |    |           | rata-rata |         |              |
| 119,276572 | -5,037075 | 35 | 351A      | 64,9389   | 51,6042 | Kurang Sehat |
|            |           |    | 351B      | 63,769    |         |              |
|            |           |    | 351C      | 59,8872   |         |              |
|            |           |    | 351D      | 62,2808   |         |              |
|            |           |    | Rata-rata | 62,719    |         |              |
|            |           |    | 352A      | 47,4399   |         |              |
|            |           |    | 352B      | 44,5195   |         |              |
|            |           |    | 352C      | 58,6871   |         |              |
|            |           |    | 352D      | 59,7548   |         |              |
|            |           |    | Rata-rata | 52,6003   |         |              |
|            |           |    | 353A      | 55,3666   |         |              |
|            |           |    | 353B      | 59,9055   |         |              |
|            |           |    | 353C      | 57,6497   |         |              |
|            |           |    | 353D      | 59,7578   |         |              |
|            |           |    | Rata-rata | 58,1699   |         |              |
|            |           |    | 354A      | 45,239    |         |              |
|            |           |    | 354B      | 53,3567   |         |              |
|            |           |    | 354C      | 52,5702   |         |              |
|            |           |    | 354D      | 44,2438   |         |              |
|            |           |    | Rata-rata | 48,8524   |         |              |
|            |           |    | 355A      | 34,5034   |         |              |
|            |           |    | 355B      | 33,2076   |         |              |
|            |           |    | 355C      | 38,5347   |         |              |
|            |           |    | 355D      | 36,4708   |         |              |
|            |           |    | Rata-rata | 35,6791   |         |              |
|            |           |    |           | rata-rata |         |              |
| 119,276433 | -5,037154 | 36 | 361A      | 23,4802   | 43,1403 | Kurang Sehat |
|            |           |    | 361B      | 38,2321   |         |              |
|            |           |    | 361C      | 33,5646   |         |              |
|            |           |    | 361D      | 37,0132   |         |              |
|            |           |    | Rata-rata | 33,0725   |         |              |
|            |           |    | 362A      | 23,2438   |         |              |
|            |           |    | 362B      | 34,1595   |         |              |
|            |           |    | 362C      | 35,1814   |         |              |
|            |           |    | 362D      | 30,2134   |         |              |
|            |           |    | Rata-rata | 30,6995   |         |              |
|            |           |    | 363A      | 63,4558   |         |              |

|            |           |    |           |           |         |              |
|------------|-----------|----|-----------|-----------|---------|--------------|
|            |           |    | 363B      | 62,8201   |         |              |
|            |           |    | 363C      | 61,3945   |         |              |
|            |           |    | 363D      | 59,8256   |         |              |
|            |           |    | Rata-rata | 61,874    |         |              |
|            |           |    | 364A      | 45,3547   |         |              |
|            |           |    | 364B      | 56,4598   |         |              |
|            |           |    | 364C      | 53,2571   |         |              |
|            |           |    | 364D      | 48,1382   |         |              |
|            |           |    | Rata-rata | 50,8025   |         |              |
|            |           |    | 365A      | 46,2791   |         |              |
|            |           |    | 365B      | 34,2801   |         |              |
|            |           |    | 365C      | 43,3794   |         |              |
|            |           |    | 365D      | 33,073    |         |              |
|            |           |    | Rata-rata | 39,2529   |         |              |
|            |           |    |           | rata-rata |         |              |
| 119,276905 | -5,037694 | 37 | 371A      | 52,652    | 31,4968 | Kurang Sehat |
|            |           |    | 371B      | 44,994    |         |              |
|            |           |    | 371C      | 48,4206   |         |              |
|            |           |    | 371D      | 47,4619   |         |              |
|            |           |    | Rata-rata | 48,3821   |         |              |
|            |           |    | 372A      | 21,279    |         |              |
|            |           |    | 372B      | 18,3482   |         |              |
|            |           |    | 372C      | 23,1236   |         |              |
|            |           |    | 372D      | 13,2981   |         |              |
|            |           |    | Rata-rata | 19,0122   |         |              |
|            |           |    | 373A      | 45,8496   |         |              |
|            |           |    | 373B      | 46,1408   |         |              |
|            |           |    | 373C      | 46,2766   |         |              |
|            |           |    | 373D      | 46,4232   |         |              |
|            |           |    | Rata-rata | 46,1726   |         |              |
|            |           |    | 374A      | 22,3005   |         |              |
|            |           |    | 374B      | 28,2255   |         |              |
|            |           |    | 374C      | 24,0122   |         |              |
|            |           |    | 374D      | 25,3828   |         |              |
|            |           |    | Rata-rata | 24,9803   |         |              |
|            |           |    | 375A      | 17,2891   |         |              |
|            |           |    | 375B      | 16,0168   |         |              |
|            |           |    | 375C      | 21,2394   |         |              |
|            |           |    | 375D      | 21,2026   |         |              |
|            |           |    | Rata-rata | 18,937    |         |              |
|            |           |    |           | rata-rata |         |              |
| 119,276697 | -5,037578 | 38 | 381A      | 32,5472   | 53,5915 | Kurang Sehat |
|            |           |    | 381B      | 24,3405   |         |              |
|            |           |    | 381C      | 28,2081   |         |              |
|            |           |    | 381D      | 23,1203   |         |              |
|            |           |    | Rata-rata | 27,054    |         |              |

|            |           |    |           |           |         |       |
|------------|-----------|----|-----------|-----------|---------|-------|
|            |           |    | 382A      | 63,0967   |         |       |
|            |           |    | 382B      | 67,556    |         |       |
|            |           |    | 382C      | 29,1445   |         |       |
|            |           |    | 382D      | 33,7993   |         |       |
|            |           |    | Rata-rata | 48,3991   |         |       |
|            |           |    | 383A      | 60,5964   |         |       |
|            |           |    | 383B      | 68,3949   |         |       |
|            |           |    | 383C      | 65,4262   |         |       |
|            |           |    | 383D      | 67,6632   |         |       |
|            |           |    | Rata-rata | 65,5202   |         |       |
|            |           |    | 384A      | 64,1792   |         |       |
|            |           |    | 384B      | 56,3483   |         |       |
|            |           |    | 384C      | 67,3821   |         |       |
|            |           |    | 384D      | 45,258    |         |       |
|            |           |    | Rata-rata | 58,2919   |         |       |
|            |           |    | 385A      | 62,5411   |         |       |
|            |           |    | 385B      | 62,868    |         |       |
|            |           |    | 385C      | 73,6301   |         |       |
|            |           |    | 385D      | 75,7306   |         |       |
|            |           |    | Rata-rata | 68,6925   |         |       |
|            |           |    |           | rata-rata |         |       |
| 119,276815 | -5,037692 | 39 | 391A      | 45,3489   | 66,0729 | Sehat |
|            |           |    | 391B      | 56,216    |         |       |
|            |           |    | 391C      | 43,1895   |         |       |
|            |           |    | 391D      | 63,3392   |         |       |
|            |           |    | Rata-rata | 52,0234   |         |       |
|            |           |    | 392A      | 77,4834   |         |       |
|            |           |    | 392B      | 74,531    |         |       |
|            |           |    | 392C      | 71,7176   |         |       |
|            |           |    | 392D      | 72,9677   |         |       |
|            |           |    | Rata-rata | 74,1749   |         |       |
|            |           |    | 393A      | 61,2636   |         |       |
|            |           |    | 393B      | 62,0906   |         |       |
|            |           |    | 393C      | 54,6908   |         |       |
|            |           |    | 393D      | 66,3012   |         |       |
|            |           |    | Rata-rata | 61,0866   |         |       |
|            |           |    | 394A      | 67,6747   |         |       |
|            |           |    | 394B      | 81,5265   |         |       |
|            |           |    | 394C      | 80,7876   |         |       |
|            |           |    | 394D      | 82,8707   |         |       |
|            |           |    | Rata-rata | 78,2149   |         |       |
|            |           |    | 395A      | 63,2814   |         |       |
|            |           |    | 395B      | 63,483    |         |       |
|            |           |    | 395C      | 65,3862   |         |       |
|            |           |    | 395D      | 67,3081   |         |       |
|            |           |    | Rata-rata | 64,8647   |         |       |

|            |           |     |           |           |        |       |
|------------|-----------|-----|-----------|-----------|--------|-------|
|            |           |     |           | rata-rata |        |       |
| 119,277077 | -5,037864 | 310 | 3101A     | 65,7856   | 65,942 | Sehat |
|            |           |     | 3101B     | 59,4288   |        |       |
|            |           |     | 3101C     | 62,4046   |        |       |
|            |           |     | 3101D     | 67,3801   |        |       |
|            |           |     | Rata-rata | 63,7498   |        |       |
|            |           |     | 3102A     | 65,5575   |        |       |
|            |           |     | 3102B     | 74,3066   |        |       |
|            |           |     | 3102C     | 74,6329   |        |       |
|            |           |     | 3102D     | 65,4575   |        |       |
|            |           |     | Rata-rata | 69,9886   |        |       |
|            |           |     | 3103A     | 62,5482   |        |       |
|            |           |     | 3103B     | 65,4021   |        |       |
|            |           |     | 3103C     | 56,3118   |        |       |
|            |           |     | 3103D     | 52,2803   |        |       |
|            |           |     | Rata-rata | 59,1356   |        |       |
|            |           |     | 3104A     | 79,6169   |        |       |
|            |           |     | 3104B     | 78,5867   |        |       |
|            |           |     | 3104C     | 77,8546   |        |       |
|            |           |     | 3104D     | 79,1325   |        |       |
|            |           |     | Rata-rata | 78,7977   |        |       |
| 3105A      | 52,3023   |     |           |           |        |       |
| 3105B      | 56,2985   |     |           |           |        |       |
| 3105C      | 67,3248   |     |           |           |        |       |
| 3105D      | 56,228    |     |           |           |        |       |
| Rata-rata  | 58,0384   |     |           |           |        |       |
|            |           |     |           | rata-rata |        |       |
| 119,27707  | -5,038058 | 311 | 3111A     | 77,6982   | 64,598 | Sehat |
|            |           |     | 3111B     | 77,5732   |        |       |
|            |           |     | 3111C     | 63,7812   |        |       |
|            |           |     | 3111D     | 78,0309   |        |       |
|            |           |     | Rata-rata | 74,2709   |        |       |
|            |           |     | 3112A     | 65,1498   |        |       |
|            |           |     | 3112B     | 62,6827   |        |       |
|            |           |     | 3112C     | 59,3649   |        |       |
|            |           |     | 3112D     | 63,1159   |        |       |
|            |           |     | Rata-rata | 62,5783   |        |       |
|            |           |     | 3113A     | 69,2631   |        |       |
|            |           |     | 3113B     | 78,0285   |        |       |
|            |           |     | 3113C     | 63,557    |        |       |
|            |           |     | 3113D     | 78,2435   |        |       |
|            |           |     | Rata-rata | 72,273    |        |       |
|            |           |     | 3114A     | 54,2791   |        |       |
|            |           |     | 3114B     | 56,267    |        |       |
| 3114C      | 60,146    |     |           |           |        |       |
| 3114D      | 51,2921   |     |           |           |        |       |

|           |           |     |           |           |         |        |
|-----------|-----------|-----|-----------|-----------|---------|--------|
|           |           |     | Rata-rata | 55,4961   |         |        |
|           |           |     | 3115A     | 61,0236   |         |        |
|           |           |     | 3115B     | 60,1201   |         |        |
|           |           |     | 3115C     | 55,1239   |         |        |
|           |           |     | 3115D     | 57,2197   |         |        |
|           |           |     | Rata-rata | 58,3718   |         |        |
|           |           |     |           | rata-rata |         |        |
| 119,27727 | -5,038161 | 312 | 3121A     | 22,3839   | 24,3154 | Miskin |
|           |           |     | 3121B     | 26,1524   |         |        |
|           |           |     | 3121C     | 29,3526   |         |        |
|           |           |     | 3121D     | 27,532    |         |        |
|           |           |     | Rata-rata | 26,3552   |         |        |
|           |           |     | 3122A     | 15,2961   |         |        |
|           |           |     | 3122B     | 16,2876   |         |        |
|           |           |     | 3122C     | 22,0613   |         |        |
|           |           |     | 3122D     | 20,2977   |         |        |
|           |           |     | Rata-rata | 18,4857   |         |        |
|           |           |     | 3123A     | 29,7501   |         |        |
|           |           |     | 3123B     | 23,9773   |         |        |
|           |           |     | 3123C     | 27,7499   |         |        |
|           |           |     | 3123D     | 21,1857   |         |        |
|           |           |     | Rata-rata | 25,6658   |         |        |
|           |           |     | 3124A     | 23,2761   |         |        |
|           |           |     | 3124B     | 12,2385   |         |        |
|           |           |     | 3124C     | 14,2439   |         |        |
|           |           |     | 3124D     | 17,2872   |         |        |
|           |           |     | Rata-rata | 16,7614   |         |        |
|           |           |     | 3125A     | 31,2734   |         |        |
|           |           |     | 3125B     | 29,4741   |         |        |
|           |           |     | 3125C     | 33,0766   |         |        |
|           |           |     | 3125D     | 43,4109   |         |        |
|           |           |     | Rata-rata | 34,3088   |         |        |
|           |           |     |           | rata-rata |         |        |

Lampiran 7. Identitas Citra Sentinel-2A

| Identitas Citra  | Tahun Pengambilan |
|--|-------------------|
| S2A_MSIL1C_20151028T022252_N0204_R103_T50MQV_20151028T022250 | 28/10/2015        |
| S2A_MSIL1C_20171027T022331_N0206_R103_T50MQV_20171027T090409 | 27/10/2017        |
| S2A_MSIL1C_20191106T022331_N0208_R103_T50MQV_20191106T053935 | 06/11/2019        |
| S2A_MSIL1C_20221110T022331_N0400_R103_T50MQV_20221110T042539 | 10/11/2022        |



Lampiran 8. Nilai ki/kj

| Citra            | ki/kj   |         |         |
|------------------|---------|---------|---------|
|                  | Band 23 | Band 24 | Band 34 |
| Citra tahun 2015 | 1,46    | 2,29    | 1,47    |
| Citra tahun 2017 | 0,91    | 0,57    | 0,69    |
| Citra tahun 2019 | 0,93    | 0,68    | 0,76    |
| Citra tahun 2022 | 0,86    | 0,74    | 0,90    |

Lampiran 9. Ukuran Butir Sedimen

| Stasiun | Jenis Sedimen | Ukuran Butir Sedimen (mm) | Rata-rata |
|---------|---------------|---------------------------|-----------|
| S1T1    | Pasir Kasar   | 0,886                     | 0,743     |
| S1T2    | Pasir Kasar   | 0,867                     |           |
| S1T3    | Pasir Kasar   | 0,966                     |           |
| S1T4    | Pasir Kasar   | 0,910                     |           |
| S1T5    | Pasir Kasar   | 0,729                     |           |
| S1T6    | Pasir Kasar   | 0,626                     |           |
| S1T7    | Pasir Kasar   | 0,742                     |           |
| S1T8    | Pasir Kasar   | 0,737                     |           |
| S1T9    | Pasir Kasar   | 0,617                     |           |
| S1T10   | Pasir Kasar   | 0,616                     |           |
| S1T11   | Pasir Kasar   | 0,520                     |           |
| S1T12   | Pasir Kasar   | 0,704                     |           |
| S2T1    | Pasir Kasar   | 0,746                     | 0,518     |
| S2T2    | Pasir Sedang  | 0,499                     |           |
| S2T3    | Pasir Kasar   | 0,514                     |           |
| S2T4    | Pasir Sedang  | 0,464                     |           |
| S2T5    | Pasir Kasar   | 0,578                     |           |
| S2T6    | Pasir Kasar   | 0,587                     |           |
| S2T7    | Pasir Sedang  | 0,361                     |           |
| S2T8    | Pasir Sedang  | 0,398                     |           |
| S2T9    | Pasir Kasar   | 0,592                     |           |
| S2T10   | Pasir Sedang  | 0,448                     |           |
| S2T11   | Pasir Kasar   | 0,560                     |           |
| S2T12   | Pasir Sedang  | 0,475                     |           |
| S3T1    | Pasir Sedang  | 0,474                     | 0,581     |
| S3T2    | Pasir Kasar   | 0,707                     |           |
| S3T3    | Pasir Kasar   | 0,593                     |           |
| S3T4    | Pasir Kasar   | 0,568                     |           |
| S3T5    | Pasir Kasar   | 0,568                     |           |
| S3T6    | Pasir Kasar   | 0,560                     |           |
| S3T7    | Pasir Kasar   | 0,608                     |           |
| S3T8    | Pasir Kasar   | 0,703                     |           |
| S3T9    | Pasir Kasar   | 0,508                     |           |

|       |             |       |  |
|-------|-------------|-------|--|
| S3T10 | Pasir Kasar | 0,595 |  |
| S3T11 | Pasir Kasar | 0,578 |  |
| S3T12 | Pasir Kasar | 0,509 |  |

Lampiran 10. Perubahan yang terjadi di Pulau Bonetambung tahun 2015-2017

| <b>Perubahan</b>                      | <b>Luas (m<sup>2</sup>)</b> |
|---------------------------------------|-----------------------------|
| Pasir-Bukan Lamun                     | 51,70                       |
| Pasir-Lamun Kurang Sehat              | 716,53                      |
| Pasir-Lamun Miskin                    | 93,34                       |
| Pasir-Lamun Sehat                     | 11541,58                    |
| Pasir-Pasir                           | 8687,71                     |
| Lamun Sehat-Bukan Lamun               | 110,04                      |
| Lamun Sehat-Lamun Kurang Sehat        | 10543,31                    |
| Lamun Sehat-Lamun Miskin              | 782,08                      |
| Lamun Sehat-Lamun Sehat               | 17971,19                    |
| Lamun Sehat-Pasir                     | 1563,40                     |
| Lamun Kurang Sehat-Bukan Lamun        | 2803,48                     |
| Lamun Kurang Sehat-Lamun Kurang Sehat | 23161,79                    |
| Lamun Kurang Sehat-Lamun Miskin       | 10742,98                    |
| Lamun Kurang Sehat-Lamun Sehat        | 5103,09                     |
| Lamun Kurang Sehat-Pasir              | 533,61                      |
| Lamun Miskin-Bukan Lamun              | 12391,52                    |
| Lamun Miskin-Lamun Kurang Sehat       | 13256,50                    |
| Lamun Miskin-Lamun Miskin             | 41224,91                    |
| Lamun Miskin-Lamun Sehat              | 842,88                      |
| Lamun Miskin-Pasir                    | 3,79                        |
| Bukan Lamun-Bukan Lamun               | 562603,55                   |
| Bukan Lamun-Lamun Kurang Sehat        | 5294,17                     |
| Bukan Lamun-Lamun Miskin              | 26044,31                    |
| Bukan Lamun-Lamun Sehat               | 48,96                       |

Lampiran 11. Perubahan yang terjadi di Pulau Bonetambung tahun 2017-2019

| <b>Perubahan</b>                      | <b>Luas (m<sup>2</sup>)</b> |
|---------------------------------------|-----------------------------|
| Bukan Lamun-Lamun Kurang Sehat        | 161,96                      |
| Bukan Lamun-Lamun Miskin              | 3940,68                     |
| Bukan Lamun-Bukan Lamun               | 564649,59                   |
| Lamun Kurang Sehat-Pasir              | 377,11                      |
| Lamun Kurang Sehat-Lamun Sehat        | 2543,23                     |
| Lamun Kurang Sehat-Lamun Kurang Sehat | 15284,80                    |
| Lamun Kurang Sehat-Lamun Miskin       | 24533,26                    |
| Lamun Kurang Sehat-Bukan Lamun        | 9966,78                     |
| Lamun Miskin-Lamun Sehat              | 97,06                       |
| Lamun Miskin-Lamun Kurang Sehat       | 3456,60                     |
| Lamun Miskin-Lamun Miskin             | 24169,02                    |
| Lamun Miskin-Bukan Lamun              | 51134,68                    |
| Lamun Sehat-Pasir                     | 1853,16                     |

|                                |          |
|--------------------------------|----------|
| Lamun Sehat-Lamun Sehat        | 13904,89 |
| Lamun Sehat-Lamun Kurang Sehat | 14382,60 |
| Lamun Sehat-Lamun Miskin       | 3177,48  |
| Lamun Sehat-Bukan Lamun        | 680,23   |
| Pasir-Pasir                    | 3635,12  |
| Pasir-Lamun Sehat              | 5008,63  |
| Pasir-Lamun Kurang Sehat       | 1210,19  |
| Pasir-Lamun Miskin             | 171,59   |
| Pasir-Bukan Lamun              | 22,32    |

Lampiran 12. Perubahan yang terjadi di Pulau Bonetambung tahun 2019-2022

| <b>Perubahan</b>                      | <b>Luas (m<sup>2</sup>)</b> |
|---------------------------------------|-----------------------------|
| Pasir-Pasir                           | 4643,55                     |
| Pasir-Lamun Sehat                     | 809,42                      |
| Pasir-Lamun Kurang Sehat              | 195,25                      |
| Lamun Sehat-Pasir                     | 5011,62                     |
| Lamun Sehat-Lamun Sehat               | 10535,27                    |
| Lamun Sehat-Lamun Kurang Sehat        | 4365,03                     |
| Lamun Sehat-Lamun Miskin              | 1388,84                     |
| Lamun Sehat-Bukan Lamun               | 214,40                      |
| Lamun Kurang Sehat-Pasir              | 957,74                      |
| Lamun Kurang Sehat-Lamun Sehat        | 8521,54                     |
| Lamun Kurang Sehat-Lamun Kurang Sehat | 14177,46                    |
| Lamun Kurang Sehat-Lamun Miskin       | 6629,91                     |
| Lamun Kurang Sehat-Bukan Lamun        | 4153,03                     |
| Lamun Miskin-Pasir                    | 13,34                       |
| Lamun Miskin-Lamun Sehat              | 3098,05                     |
| Lamun Miskin-Lamun Kurang Sehat       | 18654,83                    |
| Lamun Miskin-Lamun Miskin             | 18924,86                    |
| Lamun Miskin-Bukan Lamun              | 15355,19                    |
| Bukan Lamun-Lamun Sehat               | 1267,55                     |
| Bukan Lamun-Lamun Kurang Sehat        | 11584,39                    |
| Bukan Lamun-Lamun Miskin              | 32024,33                    |
| Bukan Lamun-Bukan Lamun               | 577664,67                   |

Lampiran 13. Perubahan yang terjadi di Pulau Bonetambung tahun 2015-2022

| <b>Perubahan</b>               | <b>Luas (m<sup>2</sup>)</b> |
|--------------------------------|-----------------------------|
| Pasir-Pasir                    | 8488,41                     |
| Pasir-Lamun Sehat              | 10444,88                    |
| Pasir-Lamun Kurang Sehat       | 1033,51                     |
| Pasir-Lamun Miskin             | 155,12                      |
| Lamun Sehat-Pasir              | 2946,93                     |
| Lamun Sehat-Lamun Sehat        | 10240,32                    |
| Lamun Sehat-Lamun Kurang Sehat | 13642,08                    |
| Lamun Sehat-Lamun Miskin       | 3529,09                     |

|                                       |           |
|---------------------------------------|-----------|
| Lamun Sehat-Bukan Lamun               | 482,57    |
| Lamun Kurang Sehat-Pasir              | 176,50    |
| Lamun Kurang Sehat-Lamun Sehat        | 3012,16   |
| Lamun Kurang Sehat-Lamun Kurang Sehat | 17351,19  |
| Lamun Kurang Sehat-Lamun Miskin       | 13932,49  |
| Lamun Kurang Sehat-Bukan Lamun        | 8158,93   |
| Lamun Miskin-Lamun Sehat              | 585,85    |
| Lamun Miskin-Lamun Kurang Sehat       | 12879,38  |
| Lamun Miskin-Lamun Miskin             | 28638,47  |
| Lamun Miskin-Bukan Lamun              | 25615,90  |
| Bukan Lamun-Lamun Sehat               | 227,37    |
| Bukan Lamun-Lamun Kurang Sehat        | 4122,65   |
| Bukan Lamun-Lamun Miskin              | 13473,41  |
| Bukan Lamun-Bukan Lamun               | 558318,00 |

Lampiran 14. Perubahan luas tahun 2015-2017

| Klasifikasi        | 2015         |               | 2017         |               | Perubahan (Ha) |
|--------------------|--------------|---------------|--------------|---------------|----------------|
|                    | Hektar (Ha)  | Persen (%)    | Hektar (Ha)  | Persen (%)    |                |
| Bukan Lamun        | 62,46        | 79,23         | 59,94        | 76,90         | -2,52          |
| Lamun Kurang Sehat | 4,26         | 5,41          | 5,31         | 6,81          | +1,05          |
| Lamun Miskin       | 6,77         | 8,59          | 7,89         | 10,13         | +1,12          |
| Lamun Sehat        | 3,12         | 3,96          | 3,59         | 4,60          | -0,46          |
| Pasir              | 2,21         | 2,80          | 1,22         | 1,56          | -0,99          |
| <b>Total</b>       | <b>78,83</b> | <b>100,00</b> | <b>77,95</b> | <b>100,00</b> | <b>0,88</b>    |

Lampiran 15. Perubahan luas tahun 2017-2019

| Klasifikasi        | 2017         |               | 2019         |               | Perubahan (Ha) |
|--------------------|--------------|---------------|--------------|---------------|----------------|
|                    | Hektar (Ha)  | Persen (%)    | Hektar (Ha)  | Persen (%)    |                |
| Bukan Lamun        | 59,94        | 76,90         | 65,82        | 84,60         | +5,88          |
| Lamun Kurang Sehat | 5,31         | 6,81          | 3,53         | 4,54          | -1,78          |
| Lamun Miskin       | 7,89         | 10,13         | 5,65         | 7,26          | -2,25          |
| Lamun Sehat        | 3,59         | 4,60          | 2,22         | 2,85          | -1,37          |
| Pasir              | 1,22         | 1,56          | 0,59         | 0,75          | -0,63          |
| <b>Total</b>       | <b>77,95</b> | <b>100,00</b> | <b>77,80</b> | <b>100,00</b> | <b>0,14</b>    |

Lampiran 16. Perubahan luas tahun 2019-2022

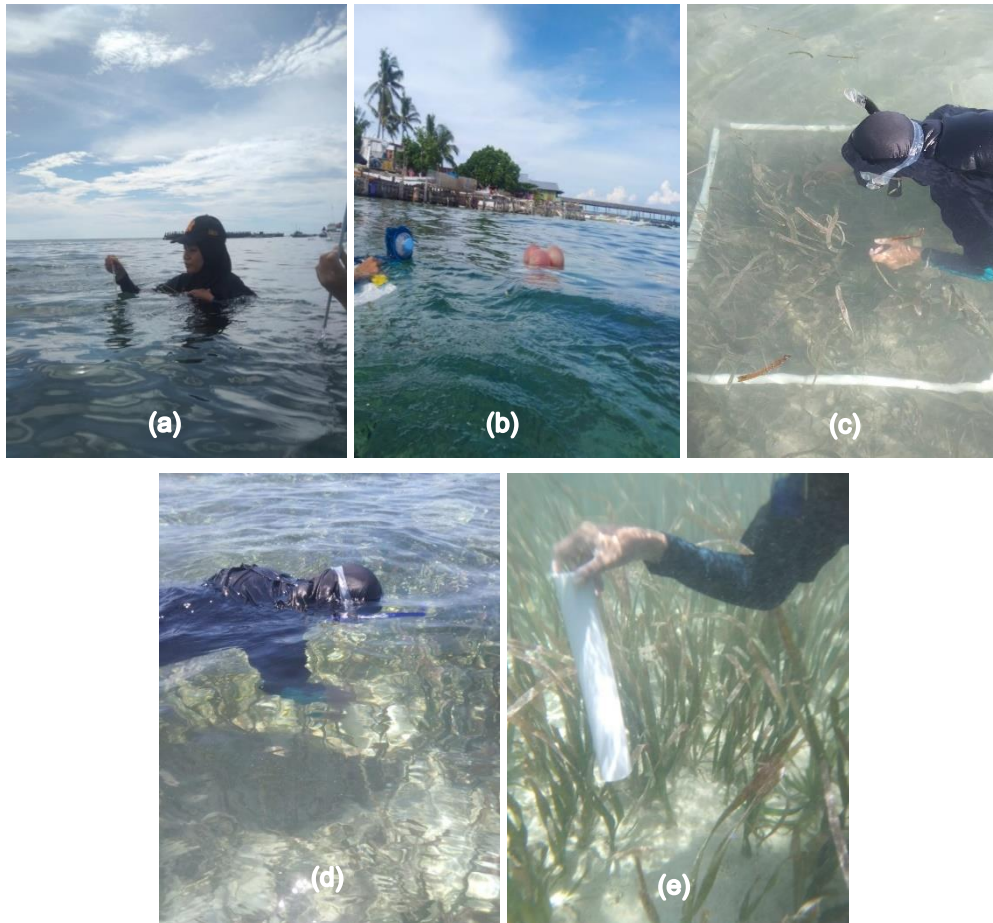
| Klasifikasi        | 2019        |            | 2022        |            | Perubahan (Ha) |
|--------------------|-------------|------------|-------------|------------|----------------|
|                    | Hektar (Ha) | Persen (%) | Hektar (Ha) | Persen (%) |                |
| Bukan Lamun        | 65,82       | 84,60      | 62,09       | 80,82      | -3,73          |
| Lamun Kurang Sehat | 3,53        | 4,54       | 4,94        | 6,43       | +1,41          |
| Lamun Miskin       | 5,65        | 7,26       | 5,98        | 7,78       | +0,33          |
| Lamun Sehat        | 2,22        | 2,85       | 2,55        | 3,32       | +0,33          |
| Pasir              | 0,59        | 0,75       | 1,26        | 1,65       | +0,68          |

|              |       |        |       |        |      |
|--------------|-------|--------|-------|--------|------|
| <b>Total</b> | 77,80 | 100,00 | 76,82 | 100,00 | 0,98 |
|--------------|-------|--------|-------|--------|------|

Lampiran 17. Perubahan luas tahun 2015-2022

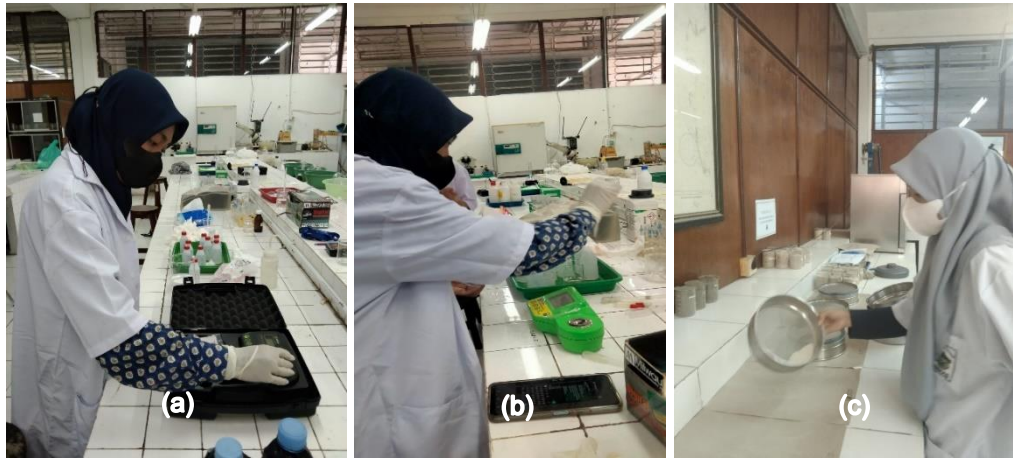
| Klasifikasi        | 2015        |            | 2022        |            | Perubahan (Ha) |
|--------------------|-------------|------------|-------------|------------|----------------|
|                    | Hektar (Ha) | Persen (%) | Hektar (Ha) | Persen (%) |                |
| Bukan Lamun        | 62,46       | 79,23      | 62,09       | 80,82      | -0,37          |
| Lamun Kurang Sehat | 4,26        | 5,41       | 4,94        | 6,43       | +0,68          |
| Lamun Miskin       | 6,77        | 8,59       | 5,98        | 7,78       | -0,79          |
| Lamun Sehat        | 3,12        | 3,96       | 2,55        | 3,32       | -0,58          |
| Pasir              | 2,21        | 2,80       | 1,26        | 1,65       | -0,95          |
| <b>Total</b>       | 78,83       | 100,00     | 76,82       | 100,00     | 2,00           |

Lampiran 18. Dokumentasi pengambilan sampel di lapangan



(a) pengukuran suhu; (b) pengukuran kecepatan arus; (c) pengamatan jenis lamun; (d) pengambilan sampel sedimen; (e) pengambilan sampel sedimen

Lampiran 19. Dokumentasi pengukuran parameter di laboratorium



(a) pengukuran kekeruhan; (b) pengukuran salinitas; (c) pengayakan sampel sedimen