

DAFTAR PUSTAKA

- A I D Puspita, M A Thaha, M S Pallu and F Maricar. (2020). *Effect of Wave Steepness to Relative Wave Run-Up on OWEC*. IOP Conf. Series: Earth and Environmental Science 419 (2020) 012117, DOI: 10.1088/1755-1315/419/1/012117
- Allsop, W., Bruce, T., Pearson, J., & Besley, P. (2005) *Wave Overtopping at Vertical and Steep Seawalls*. *Maritime Engineering*, 103 – 114.
- A Vidura, I W Nurjaya, M Iqbal, I Jaya. 2020. *Ocean Wave Measurement and Wave Energy Calculation Using Overtopping Power Plant Scheme*. IOP Conf. Series: Earth and Environmental Science 429 (2020) 012047, DOI: 10.1088/1755-1315/429/1/012047
- Balazs Czech and Parol Bauer, (2012). *Wave Energy Converter Concepts: Design Challenges and Classification*, IEEE Industrial Electronics Magazine, 6 (2) 4 -16
- Barbara Zanuttigh and Elisa Angelelli, (2013), *Experimental investigation of floating wave energy converters for coastal protection purpose*, International Journal of Coastal Engineering, Elsevier, 148-159
- Brito, S. F. (2010). *Study of Overtopping at Coastal Structure*. unknown: unknown.
- Buccino, M., Stagonas, D., & Vicinanza, D. (2015). *Development of a Composite Sea Wall Wave Energy Converter System*. *Renewable Energy Elsevier*, 509-522.
- Buccino, M., Vicinanza, D., Salemo, D., Banfi, D., & Calabrese, M., (2015). *Nature and Magnitude of Wave Loadings at Seawave Slot-cone Generators*. *Ocean Engineering*, 34-58.
- CERC. (1984). *Shore Protection Manual 4th ed. Volume I & II*. Department of

The Army WESCE, Vicksburg.

- Chen, X., Hofland, B., & Ujttewaal, W. (2016). *Maximum Overtopping Forces on a Dike-mounted Wall with a Shallow Foreshore*. *Coastal Engineering*, 89-102.
- Coastal Engineering Manual Corp. (2006). *Fundamentals Of Design*. In C. E. Corp., *Coastal Engineering Manual* (pp. VI-5-ii). United States: CEM Press.
- Dean, Robert G. dan Dalrymple, Robert A. (1992). *Water Waves Mechanics for Engineers and Scientists*. World Scientific Publishing. Singapore.
- Demirbilek, Z., & Vincent, C. L. (2002). *Water Wave Mechanics*. In Demirbilek, & Vincent, *Coastal Engineering Manual Part II* (pp. II-1-i - II-1-121). United States: Unknown Press.
- Douglass, S. L., & Krolak, J. (2008). *Highways in the Coastal Environment Second Edition*. Washington, D.C.: U.S. Department of Transportation Federal Highway Administration.
- Falcao, AFDO, *Wave Energy Utilization: A Review of the Technologies, Renewable Sustainable Energy*, Rev 14 (2010) 899-918.
- Fernandez, H., G. Iglesias., R. Carballo., A. Castro., J.A. Fraguera., F. Taveira- Pinto and M. Sanche (2012). *The New Wave Energy Converter WaveCat: Concept and Laboratory Tests*. *Marine Structures*, 58-70.
- Franco, L., Csciono, C., Bellotti, G., and Andersen, T.L (2019) *Laboratory Tests on the Refection Coefficient of a Perforated Caisson*. The 8th International Coastal Structures Conference 2019 (pp. 253-262). http://doi.org/10.18451/978-3-939230-64-9_026
- Hale, M. (2006). *Wave Power Generation TAPCHAN*. Retrieved Januari 4, 2013, from people.bath Web site: people.bath.ac.uk

- Hanlon, M. (2006). *Preparing the World's Largest Wave Energy Power Plant*. Gizmag. (Online). (<http://www.gizmag.com/go/5562/>).
- Hydraulics Engineering. (2011). *Highways In The Coastal Environment: Second Edition*. U.S. Department of Transportation Federal Highway Administration (FHWA). (Online). (<http://www.fhwa.dot.gov/engineering/hydraulics/pubs/07096/6.cfm>).
- Jimenez. A. M, (2017). Experimental Study on The wave Overtopping Performance of Xblock+ Armour Unit. The Delft University of Technology,
- J, Matthew., Wesley., & Cheung, K, F (2016). *Modeling of Wave Overtopping on Vertical Structures with the HLLS Riemann Solver*. *Coastal Engineering*, 28-43.
- Kofoed, J. P. (2002). *Wave Overtopping of Marine Structures Utilization of Wave Energy*. Aalborg Denmark: Hydraulics Coastal Engineering Laboratory Departement of Civil Engineering Aalborg University.
- Kortenhaus, A., Bollinger, K., & Dassayanake, D. (2007). *Hydraulic Model Tests of an Innovative Dike Crest Design*. Germany: Comcast
- Lee, B. W., & Lee, C. (2013). Development Of Wave Power Generation Device With Resonance Channels. 7th International Conference on Asian and Pacific Coasts, (pp. 533-537). Bali.
- Liermann, M., Omar Samhoury & Samer Atshan (2015). *Energy Efficiency of Pneumatic Power Take-Off for Wave Energy Converter*. *International Journal of Marine Energy*, xxx-xxx.
- Lubis Abubakar,(2007) Energi Terbarukan dalam Pembangunan Berkelanjutan, Jurnal Teknik Lingkungan, 8 (2) 155-162.
- M. A. Thaha, Mukhsan P H , A. Subhan, M, A. Ildha Dwipuspita (2018). *Single Slope Shore Protection as a Wave Energy Catcher*. MATEC Web of Conferences 203, 01008

<https://doi.org/10.1051/mateconf/201820301008>

- Margheritini, L., D. Vicinanza and P. Frigaard (2009). SSG wave energy converter: Design, reliability and hydraulic performance of an innovative overtopping device. *Renewable Energy*, 1371-1380.
- M. Azlan Musa., A.Yazid Maliki., M.Fadhli- Ahmad, W.Nik Sani, Omar Yaakob, K.B.Samo (2017). *Numerical Simulation of Wave Flow Over the Overtopping Breakwater for Energy Conversion (OBREC) Device*. Procedia Engineering 194 Elsevier, 166 - 173
- Meer, J. v., Bruce T., Allshop,W., Faranco, L., Kortenhaus, A., Pullen, T., & Schuttrumpf all, e. (2013). *Euro top revisited. Part 1: sloping structures*.Unknown: Unknown
- Mohammad Navid Moghim., Razieh Forouzan Boroujeni., Mahmoud Mohammad Rezapour Tabari (2015). *Wave overtopping on reshaping berm breakwaters based on wave momentum flux*. International Journal of Applied Ocean Research, Elsevier, 23-30
- Mozahedy, A.B.M.K. (2010). *Composite Seawall For Wave Energy Conversion*. Master Thesis. Netherlands: Delft University of Technology.
- M P Hatta, A I D Puspita, M A Thaha, R Karamma, S Pongmanda, A S Mustari, and M Ibrahim (2020). *Experimental Study of Wave Reflection in Breakwater Overtopping Catcher Model*, IOP Conference Series: Materials Science and Engineering, doi:10.1088/1757-899X/875/1/012026
- Mustapa, M. (2017). *Wave Energy Device and Breakwater Integration: A Review*. *Renewable and Sustainable Energy Reviews*, 43-58
- Mutiara I. (2011). *Studi Eksperimental Transmisi Gelombang Melalui Single Screen Perforated Breakwater*. Thesis diterbitkan. Makassar: Program Pascasarjana Unhas.

- N.M. Tom, M.T. Lawrson, Y.H. YU, A.D Wriht, *Development of a nearshore oscillating surge wave energy converter with variable geometry. International Journal of Renewable Energy Elsevier, 410 – 424*
- Paotonan C. (2006). Unjuk Kerja Susunan Bambu Sebagai Pemecah Gelombang Terapung. Tesis, Program Pascasarjana Universitas Gajah Mada Yogyakarta. (Indonesian).
- Pasqule Contestabile., Cladio Iuppa., Enrico Di Laro., Luca Cavallaro., Thomas Lykke Andersen and Diego Vicinanza. (2017). *Wave Loadings Acting on Innovative Rubble Mound Breakwater for Overtopping Wave Energy Conversion. Coastal Engineering 122* (2017) 60-74. <http://dx.doi.org/10.1016/j.coastaleng.2017.02.001>
- P. Oliveira, F. Taveira-Pinto, T. Morais, P. Rosa-Santos (2016). *Experimental Evaluation of The Effect of Wave Focusing Walls on The Performance of The Sea-wave Slot-cone Generator. Energy Conversion and Management, 165-175*
- Pullen, T., Allsop, W., Bruce, T., & Pearson, J. (2009). *Field and laboratory Measurements of Mean Overtopping Discharges and Spatial Distributions at Vertical Seawalls. Coastal Engineering, 121-140.*
- Puspita, A Ildha (2014). *Model Pelindung Pantai sebagai Penangkap Energi Gelombang.* Makassar: Magister Tesis Universitas Hasanuddin.
- Puspita, A Ildha, Muhammad Saleh Pallu, Muhammad Arsyad Thaha and Farouk Maricar (2020). *The Effect of Wave Deformation on Overtopping Discharge in Wave Energy Converter (OWEC)-breakwater.* Journal of Engineering and Applied Sciences Page No.: 2058-2064, 2020
- Ribeiro Silva, S., Gomes, R P F., and Falcao, A F O (2016). Hydrodynamic optimization of the UGEN: *Wave Energy Converter with U-shaped Interior Oscillating Water Column. International Journal of Marine*

Energy, xxx-xxx.

- Saincher, S. and Jyotirmay Banerjee (2016). *Influence of Wave Breaking on The Hydrodynamics of Wave Energy Converters: A Review. Renewable and Sustainable Energy Reviews*, 704-717.
- Samuel. 2010. *Analisa Gelombang Overtopping Untuk Pemodelan Seawave Slot-cone Generator (SSG)*. Master Thesis. Surabaya:ITS.(Online).(<http://digilib.its.ac.id/ITS-Master-3100011042201/15928/analisa-gelombang-overtopping-untuk-pemodelan-seawave-slotcone-generator-ssg>).
- Soliman, Akram S.M. (2003). *Numerical Study of Irregular Wave Overtopping and Overflow*. Nottingham. The University of Nottingham.
- Sorensen,R.M. (2006.) *Basic Coastal Engineering*, Third Edition. Springer Science+Business Media, Inc. New York.
- Thaha, A., (2002). *Unjuk Kerja Rumpun Bakau sebagai Peredam Energi Gelombang*. Tesis. Universitas Gadjah Mada. Yogyakarta.
- Thaha, A., Maricar, F., Aboe, A., & Dwipuspita, A. (2015). The breakwater, from wave breaker to wave catcher. *Procedia Engineering Elsevier*, 6e 91-698
- The EuroTop Team. (2007). *Wave Overtopping of Sea Defences and Related Structures: Assessment Manual*. Hamburg: Boyens Offset
- Tom, N. M., Lawson, M.J., Yu, Y H., & Wright, A D. (2016). Development of a nearshore oscillating surge wave energy converter with variable geometry. *Renewable Energy*, 410- 424.
- Triatmodjo, Bambang. (1996). *Hidrolika II*. Beta Offset. Yogyakarta.
- _____. 1999. *Teknik Pantai*. Beta Offset. Yogyakarta.
- Triatmadja. R, Yuwono. N, Nizam, Haryanto, B., Thaha. A, (2010). The Prospect of Ocean Wave for Renewable Energy Sources. *Proceeding The Annually Scientific Meeting XXVII of Indonesian*

Hydraulic Engineers Association Surabaya.

- Twidell, et.al. (2006.) Wave Power Generation TAPCHAN. (Online).
<http://people.bath.ac.uk/mh391/WavePower/tapchan.html>.
- USACE. *Coastal Engineering Manual - Part II& VI*. (2008) *Coastal and Hydraulics Laboratory. Engineer Research and Development Center Waterways Experiment Station. Vicksburg-Mississippi*.
- Van der Meer, J.W. (1995) Conceptual design of rubble mound brekwaters. *Adv. Coastal Ocean Eng.* 1: 221-315
- Vicinanza, D., Contestabile, P., Nørgaard, J. Q., & Andersen, T. L. (2014). *Innovative rubble mound breakwaters for overtopping wave energy conversion*. *Coastal Engineering Elsevier*, 154- 170
- Victor, L. Meer, J W D., & Troch, P (2012). *Probability distribution of individual wave overtopping volumes for smooth impermeable steep slopes with low crest freeboards*. *Coastal Engineering*, 87-101.
- Vita Puji Lestari, (2021). Ringkasan Permasalahan dan Tantangan Program Peningkatan Energi Baru dan Terbarukan dalam Bauran Energi Nasional, Pusat Kajian AKN, Badan Keahlian DPR RI. Jakarta,
- Walkden M.J., D.J. Wood., T. Bruce, and D.H. Peregrine. (2009). *Impulsive seaward loads induced by wave overtopping on caisson bw*, *International Journal of Coastal Engineering, Elsevier*, 257- 276
- Wa Ode, Z. Prihatini., M A Thaha., M P Hatta., & Chairul Paotonan. (2022). *Effect of Freeboard High on Wave Reflection on Zigzag Model WCSP-DS Building*. *ASTONJADRO: CEAESJ*, Volume 11, Issue 2, June 2022, pp.343-353, DOI: <http://dx.doi.org/10.32832/astonjadro.v11i2>
- Wa Ode, Z. Prihatini., M A Thaha., M P Hatta., & Chairul Paotonan. (2022) *Wave Height Transformation on the WCSP-DS Zigzag Model with and Without Wave Focused Wall*. *Proceedings of The 5th*

International Conference on Modern Research in Engineering, Technology and Science. ISBN: 978-609-485-259-6

- Wa Ode, Z. Prihatini., M A Thaha., M P Hatta., & Chairul Paotonan. (2022) *Focusing Wave Energy on The Wave Catcher Shore Protection Dual-Slope (WCSP-DS) Zigzag Models. International Journal of Engineering Trends and Technology (IJETT). Vol 70 (9) 376 – 383. DOI:<https://doi.org/10.14445/22315381/IJETT-V70I9P238>*
- Xiang Zhou, Shangyan Zou, Wayne W. Weaver, and Ossama Abdelkhalik, (2022) Assessment of Electrical Power Generation of Wave Energy Converters With Wave-to-Wire Modeling, IEEE Transactions on Sustainable Energy, 13 1654 – 1665.
- Xuexue Chen., Bas Hofland., and Wim Uijtewaal. (2016) *Maximum overtopping forces on a dike-mounted wall with a shallow foreshore*, International Journal of Coastal Engineering, Elsevier, 89-102.
- Yuwono, Nur. (1996) *Perencanaan Model Hidrolik (Hydraulic Modelling)*. Laboratorium Hidrolik dan Hidrologi, Pusat Antar Universitas Ilmu Teknik-UGM. Yogyakarta.
- Zhanhong Wan, Zhongzhi Yao, Tianyu Song and Jiawang Chen. (2018). *Hydrodynamic Characteristics of the Multi-Level Overtopping Wave Power Device*. Journal of Low Frequency Noise, Vibration and Active Control 0(0)1-13. DOI: 10.1177/1461348418813745
- Zhen Liu, Zhi Han, Hongda Shi, Wanchang Yang. (2017). *Experimental Study on Multi-Level Overtopping Wave Energy Converter Under Regular Wave Conditions. International journal of Naval Architecture and Ocean Engineering*, volume xxx, 1-9

LAMPIRAN

Dokumentasi Penelitian



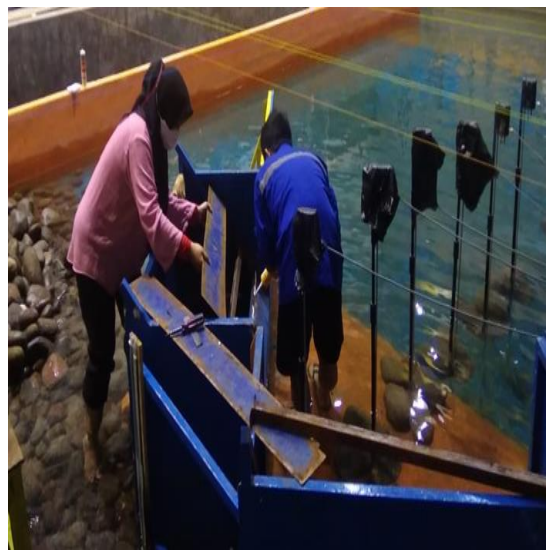
Perakitan model



Model MD2 pada *wave basin*



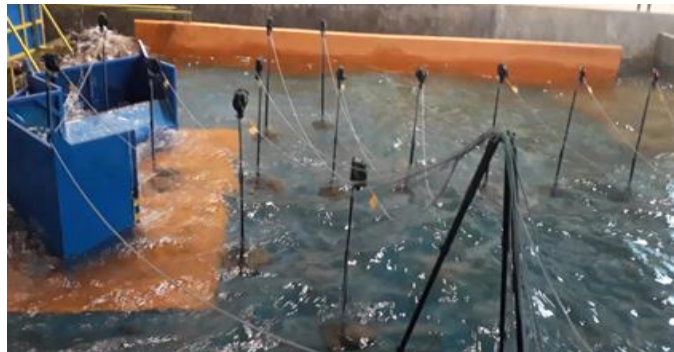
Kalibrasi wave probe



Pemasangan variasi freeboard



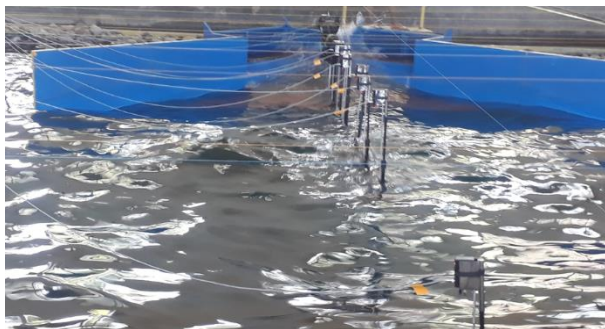
Perekatan *freeboard*



Running model MTD



Running model MD1



Model MD2 pada kedalaman 45 cm Model



MTD pada *freeboard* 10 cm