

DAFTAR PUSTAKA

- Angom, B., Lalmuanthanga, C., & Mohan, P. (2015). Analgesic and anti-inflammatory effect of an aqueous extract of *Dendrocnide sinuata* (Blume) Chew. *Exploratory Animal and Medical Research*, 5(2), 133-141.
- Ashley, N. T., Weil, Z. M., & Nelson, R. J. (2012). Inflammation: mechanisms, costs, and natural variation. *Annual Review of Ecology, Evolution and Systematics*, 43(385), 2012.
- Bahrudin, M. (2018). Pathophysiology Pain. *Saintika Medika*, 13(1), 7.
- BPOM RI., 2004. *Monografi Ekstrak Tumbuhan Indonesia, vol 1*. Jakarta: Badan pengawasan Obat dan Makanan Republik Indonesia.
- BPOM. Badan Pengawas Obat dan Makanan, 2014, *Peraturan Kepala Badan Pengawas Obat dan Makanan Republik Indonesia Nomor 13 Tahun 2014 Tentang Pedoman Uji Klinik Obat Herbal*, Kepala Badan Pengawas Obat dan Makanan Republik Indonesia
- BPOM. Badan Pengawas Obat dan Makanan, 2008, Menggunakan obat bahan alam dengan bijaksana. dalam *Natura Kos*. III. Jakarta. BPOM. . Hal 9.
- Che, C.-T., George, V., Ijnu, T., Pushpangadan, P., & Andrae-Marobela, K. (2017). Traditional medicine. In *Pharmacognosy* (pp. 15-30). Elsevier.
- Corsini, E., Di Paola, R., Viviani, B., Genovese, T., Mazzon, E., Lucchi, L., Marinovich, M., Galli, C. L., & Cuzzocrea, S. (2005). Increased carrageenan-induced acute lung inflammation in old rats. *Immunology*, 115(2), 253-261. <https://doi.org/10.1111/j.1365-2567.2005.02148.x>
- Corwin, EJ, 2009, *Buku Saku Patofisiologi edk. 3*, Penerbit Buku Kedokteran EGC, Jakarta.
- Corwin EJ, 2000, *Buku Saku Patofisiologi*. Penerbit Buku Kedokteran Jakarta. EGC
- Cunha, T. M., Verri Jr, W., Silva, J., Poole, S., Cunha, F., & Ferreira, S. (2005). A cascade of cytokines mediates mechanical inflammatory hypernociception in mice. *Proceedings of the National Academy of Sciences*, 102(5), 1755-1760.

- Dhara, A., Suba, V., Sen, T., Pal, S., & Chaudhuri, A. N. (2000). Preliminary studies on the anti-inflammatory and analgesic activity of the methanolic fraction of the root extract of *Tragia involucrata* Linn. *Journal of Ethnopharmacology*, 72(1-2), 265-268.
- Dipiro, JT, Talbert, RL, Yee, GC, Matzke, GR, Wells, BG, & Posey, LM 2008, *Pharmacotherapy, A Pathophysiologic Approach 7th edn.* McGraw Hill, New York, U.S.A.
- Direktorat Jendral Pengawasan Obat dan Makanan .2000. *Parameter Standar Umum Ekstrak Tumbuhan Obat.* Departemen Kesehatan RI, Jakarta, hal :7-8;10-11;13-17.
- Dipiro, T. J., & Talbert L. R. 2009. *Pharmacotherapy A Pathophysiologic Approach 7th.* Mc Graw Hill Medical, United States.
- Dongmo, A. B., Ondua, M., Dzikouk, G. D., Nguetseyazem, E., Vouffo, B., Bum, E., & Dongo, E. (2008). Analgesic effects of the methylene chloride/methanol extract of the leaves of *Laportea ovalifolia* (Urticaceae). *Cameroon Journal of Experimental Biology*, 4(1).
- Finch, C. E. (2005). Developmental origins of aging in brain and blood vessels: an overview. *Neurobiology of Aging*, 26(3), 281-291. [https://doi.org/https://doi.org/10.1016/j.neurobiolaging.2004.03.015](https://doi.org/10.1016/j.neurobiolaging.2004.03.015)
- Guyton, A. C. 1995. *Buku Ajar Fisiologi Kedokteran.* EGC: Jakarta
- Huang, M.-H., Huang, S.-S., Wang, B.-S., Wu, C.-H., Sheu, M.-J., Hou, W.-C., Lin, S.-S., & Huang, G.-J. (2011). Antioxidant and anti-inflammatory properties of *Cardiospermum halicacabum* and its reference compounds *ex vivo* and *in vivo*. *Journal of Ethnopharmacology*, 133(2), 743-750.
- Harvey, RA & Champe, PC 2013, *Farmakologi Ulasan Bergambar Edisi 4,* EGC, Jakarta.
- Islam, M. R., Uddin, M. N., Reza, A., Rana, M. N. U., & Farhana, K. (2014). *In vivo* evaluation of analgesic activity of methanolic extract of *Laportea interrupta* (L.) leaves. *J Chem Pharm Res*, 6(1), 552-556.
- Ismail, S. M., Rao, S., & Bhaskar, M. (2016). Evaluation of anti-inflammatory activity of *Boswellia serrata* on carrageenan induced paw edema in albino Wistar rats. *Int J Res Med Sci*, 4(7), 2980-2986.

- Ikawati, Z 2014, *Farmakologi Molekuler : Target Aksi Obat dan Mekanisme Moleulernya*, Gadjah Mada University Press, Yogyakarta.
- Ikawati, Z 2011, *Farmakoterapi Penyakit Sistem Saraf Pusat*, Bursa Ilmu, Yogyakarta.
- Katzung, G.B., 2002. *Farmakologi Dasar dan Klinik*, Edisi 8. Jakarta: Salemba Medika.
- Katzung, BG, 2013, *Farmakologi Dasar & Klinik edk. 12 vol. 2*, Penerbit Buku Kedokteran EGC, Jakarta.
- Kumar, S., Bajwa, B., Kuldeep, S., & Kalia, A. (2013). Anti-inflammatory activity of herbal plants: a review. *Int J Adv Pharm Biol Chem*, 2(2), 272-281.
- Lallo, S., Hardianti, B., Umar, H., Trisurani, W., Wahyuni, A., & Latifah, M. (2020). Aktivitas Anti Inflamasi dan Penyembuhan Luka dari Ekstrak Kulit Batang Murbei (*Morus alba* L.). *Jurnal Farmasi Galenika (Galenika Journal of Pharmacy)(e-Journal)*, 6(1), 26-36.
- Liao, J.-C., Tsai, J.-C., Peng, W.-H., Chiu, Y.-J., Sung, P.-J., Tsuzoki, M., & Kuo, Y.-H. (2013). Anti-inflammatory activity of N-(3-florophenyl) ethylcaffeamide in mice. *International journal of molecular sciences*, 14(8), 15199-15211.
- Murray, A., Kisin, E., Castranova, V., Kommineni, C., Gunther, M., & Shvedova, A. (2007). Phenol-induced in vivo oxidative stress in skin: evidence for enhanced free radical generation, thiol oxidation, and antioxidant depletion. *Chemical Research in Toxicology*, 20(12), 1769-1777.
- Mitchell, RN, Kumar, V, Abbas, AK, & Fausto, N 2008, *Buku Saku Dasar Patologis Penyakit Robbins & Cotran*, Penerbit Buku Kedokteran EGC, Jakarta.
- Nugraha Antonius, WP, 2008, *Buku Farmasi Klinik & Komunitas*, Penerbit buku Jember Press, Jember.
- Nunes, C. d. R., Barreto Arantes, M., Menezes de Faria Pereira, S., Leandro da Cruz, L., de Souza Passos, M., Pereira de Moraes, L., Vieira, I. J. C.,

- & Barros de Oliveira, D. (2020). Plants as sources of anti-inflammatory agents. *Molecules*, 25(16), 3726.
- Pashmforosh, M., Rajabi Vardanjani, H., Rajabi Vardanjani, H., Pashmforosh, M., & Khodayar, M. J. (2018). Topical anti-inflammatory and analgesic activities of *Citrullus colocynthis* extract cream in rats. *Medicina*, 54(4), 51.
- Patel, J. M. (2008). A review of potential health benefits of flavonoids.
- Pathan, H., & Williams, J. (2012). Basic opioid pharmacology: an update. *British journal of pain*, 6(1), 11-16.
- Parmar, N. S., & Prakash S. 2006. *Screening Methods in Pharmacology*. Institute of Pharmacheutical Science and Technology, Kawali.
- Price, SA & Wilson, LM, 2005, *Patofisiologi : Konsep Klinis Proses-Proses Penyakit*, Penerbit Buku Kedokteran EGC, Jakarta.
- Prabawati, R., Putro, W. A. S., La Goa, Y., Hardia, L., & Utami, D. P. (2021). The Effectiveness Test Of Wound Healing Daun Gatal (*Laportea Decumana*) Against Mice (*Mus Musculus L*).
- Reis Nunes, C., Barreto Arantes, M., Menezes de Faria Pereira, S., Leandro da Cruz, L., De Souza Passos, M., Pereira de Moraes, L., Curcino Vieira, I. J., & Barros de Oliveira, D. (2020). Plants as Sources of Anti-Inflammatory Agents. *Molecules*, 25(3726), 1–22.
- Romero, L., Merlos, M., & Vela, J. M. (2016). Antinociception by sigma-1 receptor antagonists: central and peripheral effects. *Advances in pharmacology*, 75, 179-215.
- Rowe, CR, Sheskey, PJ, Quinn, ME 2009, *Handbook of Pharmaceutical Excipients 6th edn*, Pharmaceutical Press and American Pharmacist Association, U.S.A.
- Sadeghi, H., Hajhashemi, V., Minaiyan, M., Movahedian, A., & Talebi, A. (2013). Further studies on anti-inflammatory activity of maprotiline in carrageenan-induced paw edema in rat. *International Immunopharmacology*, 15(3), 505-510.

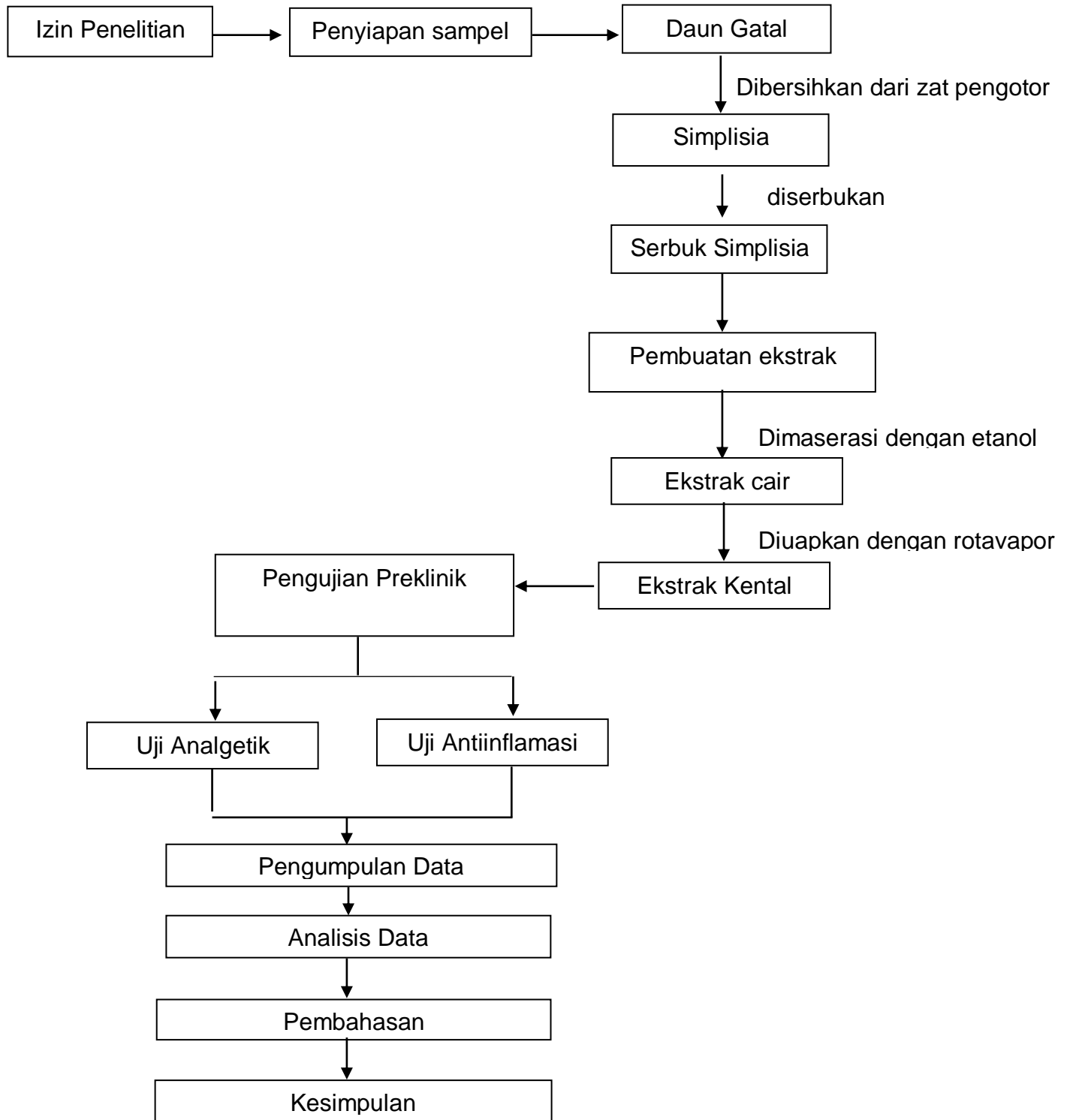
- Sanadgol, N., Najafi, S., Ghasemi, L. V., Motaleb, G., & Estakhr, J. (2011). A study of the inhibitory effects of *Citrullus colocynthis* (CCT) using hydro-alcoholic extract on the expression of cytokines: TNF- α and IL-6 in high fat diet-fed mice towards a cure for diabetes mellitus. *Journal of pharmacognosy and phytotherapy*, 3(6), 81-88.
- Schofferman, J. (2012). Pharmacologic management of chronic spinal pain. In *Spine Secrets Plus* (pp. 112-119). Elsevier.
- Simaremare, E., Gunawan, E., Yarangga, I., Satya, M., & Yabansabra, Y. (2020). Antibacterial and toxicity activities itchy leaves (*Laportea decumana*, Roxb. Wedd) extract. *Journal of Physics: Conference Series*,
- Simaremare, E. S. (2014). Skrining fitokimia ekstrak etanol daun gatal (*Laportea decumana* (Roxb.) Wedd). *PHARMACY: Jurnal Farmasi Indonesia (Pharmaceutical Journal of Indonesia)*, 11(1).
- Simaremare, E. S., Gunawan, E., & Alua, O. (2020). Active compounds characteristics and test leaf extract anticholesterol itchy leaf [*Laportea decumana* (Roxb.) wedd.]. 12(3),1310-1315 <https://doi.org/10.31838/ijpr/2020.12.03.197>
- Simaremare, E. S., & Souisa, W. V. (2021). Uji Aktivitas Antihiperurisemia Ekstrak Daun Gatal (*Laportea decumana* (Roxb.) Wedd) Asal Papua.
- Simaremare, E. S., Tolip, M. R. Y., & Pratiwi, R. D. (2022). Formulation and Effectiveness Test of Analgesic Patch from Itchy Leaves (*Laportea decumana* (Roxb.) Wedd). *Current Applied Science And Technology*, 13 pages-13 pages.
- Siswandono dan Bambang Soekardjo. 2008. *Kimia Medisinal Edisi 2*. Surabaya: Erlangga
- Susana, W., Permatasari, I., Florensia, J., Siregar, N., & Hendra, P. (2018). Uji Aktivitas Analgetik dan Antiinflamsi Sediaan Infusa dan Dekokta Akar *Eurycoma longifolia* pada Mencit. *Jurnal Ilmu Kefarmasian Indonesia*, 16(2), 182–187.
- Suleman, A. 2006, *Tinjauan Farmakologis Obat-Obat Analgetik Untuk Rasa Nyeri*. (Online)(ejournal.usu.ac.id/home.html?task=finish&cid=410&catid=74).

- Sudoyo, WA, Setiyohadi, B, Alwi, I, Simadibrata, MK, & Setiati, S 2006, *Ilmu Penyakit Dalam edk 4*, Departemen Ilmu Penyakit Dalam, Fakultas Kedokteran UI, Jakarta. Internal Publishing
- Sosa, S., Balick, M., Arvigo, R., Esposito, R., Pizza, C., Altinier, G., & Tubaro, A. (2002). Screening of the topical anti-inflammatory activity of some Central American plants. *Journal of Ethnopharmacology*, 81(2), 211-215.
- Thalib, A., Masadah, R., Prihartono, P., Hamid, F., Hasan, H., Keliwawa, S., & Labulawa, I. (2021). *Laportea decumana* (Robx) Wedd. Herbal endemic potential from Indonesia: A literature review. *Open Access Macedonian Journal of Medical Sciences*, 9(F), 639-643
- Tjay, T. H., & Rahardja K. 2007. *Obat-Obat Penting Khasiat, Penggunaan, dan Efek-Efek Sampingnya*. Edisi ke VI. PT Elex Media Komputindo, Jakarta.
- Tobo, F., Mufidah, T. B., & Mahmud, I. (2001). Buku Pegangan Laboratorium Fitokimia I. *Universitas Hasanuddin, Makassar*.
- Treede, R.-D. (2018). The International Association for the Study of Pain definition of pain: as valid in 2018 as in 1979, but in need of regularly updated footnotes. *Pain reports*, 3(2).
- Turner, A. 1965. *Screenening Methods In Pharmacology*. Academic Press, New York.
- Vogel, H. G. 2002. *Drug Discovery And Evalution, Pharmacological Assay*, Springer, Verlag Berlin, Heidelberg.
- Woerdenbag, H. J., & Kayser, O. (2014). Jamu: Indonesian traditional herbal medicine towards rational phytopharmacological use. *Journal of herbal medicine*, 4(2), 51-73.
- World Health Organization, 2009. *Medicinal plants in Papua New Guinea*. Manila : World Health Organization, regional office for the Western Pacific.
- Wimana, P. F. 2007. *Analgeik-antipiretik, analgesic-antiinflamasi non steroid dan obat pira*. Fakultas Kedokteran Universitas Indonesia, Jakarta.

Yu, M., Zheng, X., Witschi, H., & Pinkerton, K. E. (2002). The role of interleukin-6 in pulmonary inflammation and injury induced by exposure to environmental air pollutants. *Toxicol Sci*, 68(2), 488-497. <https://doi.org/10.1093/toxsci/68.2.488>

LAMPIRAN

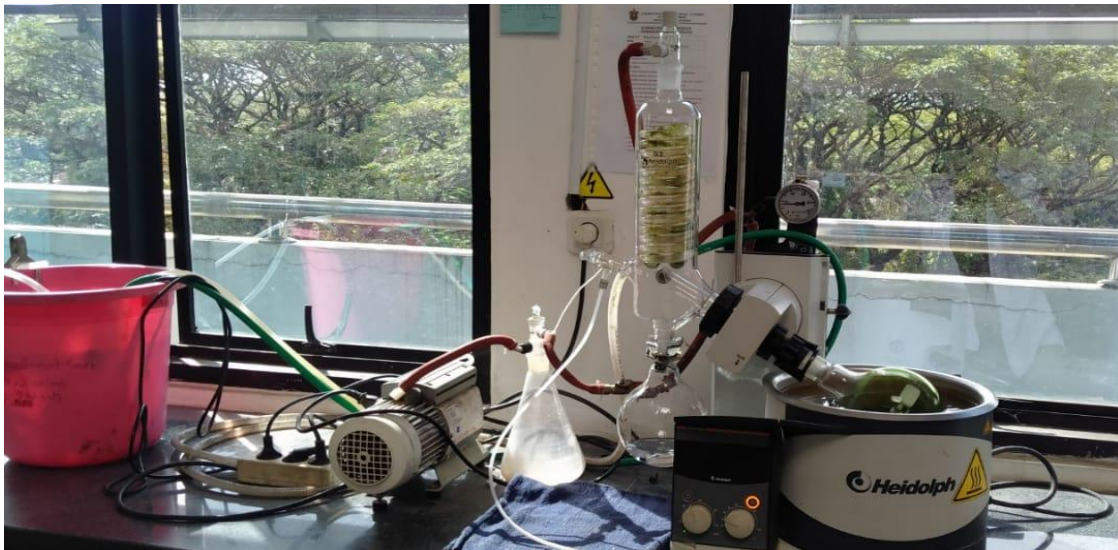
A. ALUR PENELITIAN



B. DOKUMENTASI PENELITIAN



Gambar 10. Sampel Daun Gatal (*Laportea decumana* (Roxb) Wedd)



Gambar 11. Proses penguapan pada Rotavapor



Gambar 12. Hasil Basis Krim



Gambar 13. Hasil Sediaan Krim Ekstrak Daun Gatal



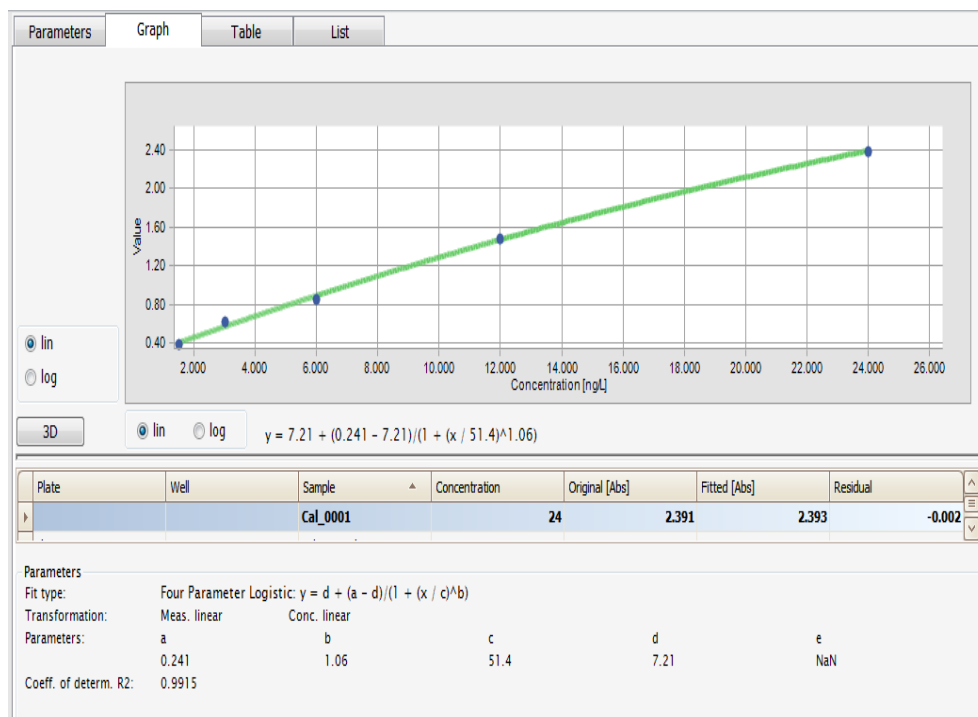
Gambar 14. Kaki Tikus Pasca Injeksi Formalin 1%



Gambar 15. Pengukuran Edema Pada Pletismometer



Gambar 16. Pengukuran Jaringan IL-6 Pada Reader Elissa



Gambar 17. Kurva Standar IL-6 Elissa

C. DATA STATISTIK

1. Interleuki-6 (IL-6)

Table Analyzed	IL6				
One-way analysis of variance					
P value	< 0,0001				
P value summary	***				
Are means signif. different? (P < 0.05)	Yes				
Number of groups	5				
F	16,63				
R square	0,8160				
ANOVA Table	SS	Df	MS		
Residual (within columns)	8,120	15	0,5413		
Total	44,13	19			
Tukey's Multiple Comparison Test	Mean Diff,	Q	Significant? P < 0,05?	Summary	95% CI of diff
KONTROL NEGATIF vs LD CREAM 0,5%	0,2185	0,5941	No	ns	-1,388 to 1,825
KONTROL NEGATIF vs LD CREAM 1 %	0,7531	2,047	No	ns	-0,8534 to 2,360
KONTROL NEGATIF vs LD CREAM 2%	2,521	6,854	Yes	**	0,9149 to 4,128
KONTROL NEGATIF vs KONTROL POSITIF	3,393	9,223	Yes	***	1,786 to 5,000
LD CREAM 0,5% vs LD CREAM 1 %	0,5346	1,453	No	ns	-1,072 to 2,141
LD CREAM 0,5% vs LD CREAM 2%	2,303	6,260	Yes	**	0,6964 to 3,909
LD CREAM 0,5% vs KONTROL POSITIF	3,174	8,629	Yes	***	1,568 to 4,781
LD CREAM 1 % vs LD CREAM 2%	1,768	4,807	Yes	*	0,1618 to 3,375
LD CREAM 1 % vs KONTROL POSITIF	2,640	7,176	Yes	**	1,033 to 4,246
LD CREAM 2% vs KONTROL POSITIF	0,8715	2,369	No	ns	-0,7350 to 2,478

2. Jilatan Kaki Tikus

Table Analyzed	DATA JILATAN				
One-way analysis of variance					
P value	0,0043				
P value summary	**				
Are means signif. different? (P < 0.05)	Yes				
Number of groups	5				
F	7,673				
R square	0,7543				
ANOVA Table	SS	Df	MS		
Residual (within columns)	82,67	10	8,267		
Total	336,4	14			
Tukey's Multiple Comparison Test	Mean Diff,	Q	Significant? P < 0,05?	Summary	95% CI of diff
Negative Control vs LD 0,5%	8,000	4,819	Yes	*	0,2744 to 15,73
Negative Control vs LD 1 %	9,333	5,623	Yes	*	1,608 to 17,06
Negative Control vs LD 2%	11,67	7,028	Yes	**	3,941 to 19,39
Negative Control vs Positive Control	10,33	6,225	Yes	**	2,608 to 18,06
LD 0,5% vs LD 1 %	1,333	0,8032	No	ns	-6,392 to 9,059
LD 0,5% vs LD 2%	3,667	2,209	No	ns	-4,059 to 11,39
LD 0,5% vs Positive Control	2,333	1,406	No	ns	-5,392 to 10,06
LD 1 % vs LD 2%	2,333	1,406	No	ns	-5,392 to 10,06
LD 1 % vs Positive Control	1,000	0,6024	No	ns	-6,726 to 8,726
LD 2% vs Positive Control	-1,333	0,8032	No	ns	-9,059 to 6,392

3. Hentakan Kaki Tikus

Table Analyzed	Data Hentakan				
One-way analysis of variance					
P value	0,0005				
P value summary	***				
Are means signif. different? (P < 0.05)	Yes				
Number of groups	5				
F	13,36				
R square	0,8423				
ANOVA Table	SS	Df	MS		
Residual (within columns)	27203	10	2720		
Total	172520	14			
Tukey's Multiple Comparison Test	Mean Diff,	Q	Significant? P < 0,05?	Summary	95% CI of diff
Negative Control vs LD 0,5 %	-14,33	0,4760	No	Ns	-154,5 to 125,8
Negative Control vs LD 1 %	92,33	3,066	No	Ns	-47,81 to 232,5
Negative Control vs LD 2 %	182,0	6,044	Yes	*	41,86 to 322,1
Negative Control vs Positive Control	236,3	7,848	Yes	**	96,19 to 376,5
LD 0,5 % vs LD 1 %	106,7	3,542	No	Ns	-33,48 to 246,8
LD 0,5 % vs LD 2 %	196,3	6,520	Yes	**	56,19 to 336,5
LD 0,5 % vs Positive Control	250,7	8,324	Yes	**	110,5 to 390,8
LD 1 % vs LD 2 %	89,67	2,978	No	Ns	-50,48 to 229,8
LD 1 % vs Positive Control	144,0	4,782	Yes	*	3,857 to 284,1
LD 2 % vs Positive Control	54,33	1,804	No	Ns	-85,81 to 194,5

4. Edema

Table Analyzed	DATA EDEMA				
Repeated Measures ANOVA					
P value	0,0001				
P value summary	***				
Are means signif. different? (P < 0.05)	Yes				
Number of groups	5				
F	11,51				
R square	0,7421				
Was the pairing significantly effective?					
R square	0,3510				
F	8,390				
P value	0,0008				
P value summary	***				
Is there significant matching? (P < 0.05)	Yes				
ANOVA Table	SS	Df	MS		
Individual (between rows)	1,149	4	0,2872		
Residual (random)	0,5476	16	0,03423		
Total	3,272	24			
Tukey's Multiple Comparison Test	Mean Diff,	Q	Significant? P < 0,05?	Summary	95% CI of diff
Negative Control vs LD Cream 0,5%	0,05000	0,6043	No	ns	-0,3085 to 0,4085
Negative Control vs LD Cream 1%	-0,05800	0,7010	No	ns	-0,4165 to 0,3005
Negative Control vs LD Cream 2%	0,4560	5,511	Yes	**	0,09750 to 0,8145
Negative Control vs Positive Control	0,5473	6,615	Yes	**	0,1888 to 0,9058
LD Cream 0,5% vs LD Cream 1%	-0,1080	1,305	No	ns	-0,4665 to 0,2505
LD Cream 0,5% vs LD Cream 2%	0,4060	4,907	Yes	*	0,04750 to 0,7645
LD Cream 0,5% vs Positive Control	0,4973	6,011	Yes	**	0,1388 to 0,8558
LD Cream 1% vs LD Cream 2%	0,5140	6,212	Yes	**	0,1555 to 0,8725
LD Cream 1% vs Positive Control	0,6053	7,316	Yes	***	0,2468 to 0,9638
LD Cream 2% vs Positive Control	0,09133	1,104	No	ns	-0,2672 to 0,4498

D. KODE ETIK PENELITIAN



**KEMENTERIAN PENDIDIKAN, KEBUDAYAAN
RISET, DAN TEKNOLOGI
UNIVERSITAS HASANUDDIN
FAKULTAS KESEHATAN MASYARAKAT**

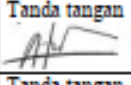
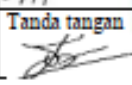
*Jln. Perintis Kemerdekaan Km. 10 Makassar 90245, Telp. (0411) 585058,
E-mail : fk.m.unhas@gmail.com, website: <https://fk.m.unhas.ac.id/>*

REKOMENDASI PERSETUJUAN ETIK

Nomor : 9712/UN4.14.1/TP.01.02/2022

Tanggal : 23 Agustus 2022

Dengan ini Menyatakan bahwa Protokol dan Dokumen yang Berhubungan dengan Protokol berikut ini telah mendapatkan Persetujuan Etik :

No. Protokol	16822092171	No. Sponsor Protokol	
Peneliti Utama	Djulfikri Mewar	Sponsor	Pribadi
Judul Peneliti	Uji Preklinik Efek Antiinflamasi dan Analgetik Ekstrak Etanol Daun Gatal (<i>Laportea decumana</i> (Roxb.) Wedd) Secara Topikal Terhadap Tikus Putih (<i>Rattus Norvegicus</i>)		
No. Versi Protokol	1	Tanggal Versi	16 Agustus 2022
No. Versi PSP	1	Tanggal Versi	16 Agustus 2022
Tempat Penelitian	Laboratorium BioFarmasi Fakultas Farmasi Universitas Hasanuddin		
Judul Review	<input type="checkbox"/> Exempted <input checked="" type="checkbox"/> Expedited <input type="checkbox"/> Fullboard	Masa Berlaku 23 Agustus 2022 Sampai 23 Agustus 2023	Frekuensi review lanjutan
Ketua Komisi Etik Penelitian	Nama : Prof.dr.Veni Hadju.M.Sc.Ph.D	Tanda tangan	 Tanggal 23 Agustus 2022
Sekretaris komisi Etik Penelitian	Nama : Dr. Wahiduddin, SKM..M.Kes	Tanda tangan	 Tanggal 23 Agustus 2022

Kewajiban Peneliti Utama :

1. Menyediakan Amendemen Protokol untuk persetujuan sebelum di implementasikan
2. Menyediakan Laporan SAE ke Komisi Etik dalam 24 Jam dan dilengkapi dalam 7 hari dan Laporan SUSAR dalam 72 Jam setelah Peneliti Utama menerima laporan
3. Menyediakan Laporan Kemajuan (progress report) setiap 6 bulan untuk penelitian resiko tinggi dan setiap setahun untuk penelitian resiko rendah
4. Menyediakan laporan akhir setelah Penelitian berakhir
5. Melaporkan penyimpangan dari protocol yang disetujui (protocol deviation/violation)
6. Memenuhi semua peraturan yang ditentukan



E. PERHITUNGAN

1. Perhitungan Bahan Basis Krim

- Cethyl Alkohol 2%

$$\frac{2}{100} \times 150 = 3 \text{ gr}$$

- Trietanolamin 4%

$$\frac{4}{100} \times 150 = 6 \text{ gr}$$

- Asam Stearat 10%

$$\frac{10}{100} \times 150 = 15 \text{ gr}$$

- Propilen Glikol 10%

$$\frac{10}{100} \times 150 = 15 \text{ gr}$$

- Parafin Cair 5%

$$\frac{5}{100} \times 150 = 7,5 \text{ gr}$$

- Hydantoin 0,1%

$$\frac{0,1}{100} \times 150 = 0,15 \text{ gr}$$

- Aqudest qs

$$3 + 6 + 15 + 15 + 7,5 + 0,15 = 46,65$$

$$150 \text{ gr} - 46,65 = 103,35 \text{ gr}$$

2. Perhitungan dosis krim ekstrak daun gatal

- Dosis Krim Ekstrak Daun Gatal 0,5%

$$\frac{0,5}{100} \times 30 \text{ gr} = 0,15 \text{ gr}$$

- Dosis Krim Ekstrak Daun Gatal 1%

$$\frac{1}{100} \times 30 \text{ gr} = 0,3 \text{ gr}$$

- Dosis Krim Ekstrak Daun Gatal 2%

$$\frac{2}{100} \times 30 \text{ gr} = 0,6 \text{ gr}$$

3. Perhitungan Persen Proteksi Jilatan Kaki

$$\text{Persen Proteksi} = \frac{a - b}{a} \times 100$$

Ket : (a) = Rata – rata kontrol negatif,

(b) = Rata – rata kelompok perlakuan

- Kelompok perlakuan 0,5%

$$= \frac{12,67 - 4,67}{12,67} \times 100 = 63,1\%$$

- Kelompok Perlakuan 1%

$$= \frac{12,67 - 3,33}{12,67} \times 100 = 73,7\%$$

- Kelompok perlakuan 2%

$$= \frac{12,67 - 1,00}{12,67} \times 100 = 92,1\%$$

- Kelompok Perlakuan Kontrol Positif

$$= \frac{12,67 - 1,00}{12,67} \times 100 = 92,1\%$$

4. Perhitungan Persen Proteksi Hentakan Kaki

$$\text{Persen Proteksi} = \frac{a - b}{a} \times 100$$

Ket : (a) = Rata – rata kontrol negatif

(b) = Rata – rata kelompok perlakuan

- Kelompok perlakuan 0,5%

$$= \frac{341,7 - 356}{341,7} \times 100 = 4,1\%$$

- Kelompok Perlakuan 1%

$$= \frac{341,7 - 249,3}{341,7} \times 100 = 27,1\%$$

- Kelompok Perlakuan 2%

$$= \frac{341,7 - 159,7}{341,7} \times 100 = 53,2\%$$

- Kelompok Kontrol Positif

$$= \frac{341,7 - 105,3}{341,7} \times 100 = 69,2\%$$