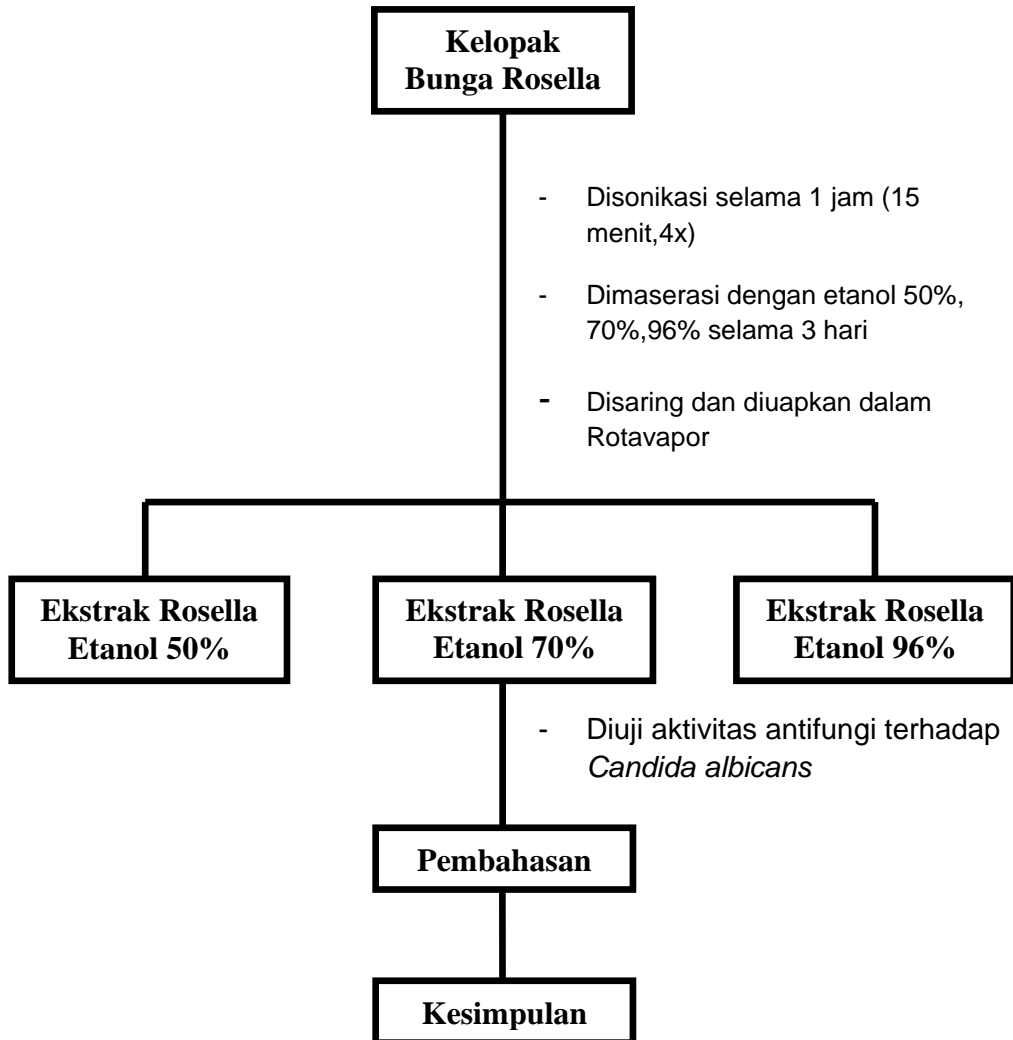


DAFTAR PUSTAKA

- Astutik, P. 2020. *Perbandingan Aktivitas Antifungi Ekstrak Etanol 70% dan Ekstrak Etanol 96% Buah Parijoto (Mednilla speciose) terhadap Candida albicans*. Skripsi. Semarang: Fakultas Ilmu Kesehatan. Universitas Ngudi Waluyo
- Arendrup, M.C. 2010. Epidemiology of invasive candidiasis. *Curr Opin Crit Care*.
- Brooks, G.F., Butel J.S., Morse, S.A. 2004. *Jawetz, Melnick, & Adelberg's Medical Microbiology*. 23rd Edition. Singapore: McGraw-Hill
- Mirna, C., Amanda, F. 2014. *Pengaruh Paparan Asap Terhadap Jumlah Candida Di Rongga Mulut. Laporan Hasil Penelitian Karya Tulis Ilmiah*. Semarang: Fakultas Kedokteran Universitas Diponegoro.
- Dismukes, W. E., Pappas, P. G. and Sobel, J. D. 2003. *Clinical Mycology*. New York: Oxford University Press.
- Handarini, K. 2014. Potential of Rosella (*Hibiscus sabdariffa* L.) Flower Extract as a Natural Colorant and Preservative in Jelly Snacks for Children. *HEURISTIC J. Ind. Eng.* 11. (2) : 32 – 42
- Inggrid, M., Hartanto, Y., Widjaja, J.F. 2018. Karakteristik Antioksidan pada Kelopak Bunga Rosella (*Hibiscus sabdariffa* Linn.). *Jurnal Rekayasa Hijau*. 3 (2) : 283 – 9.
- Komala, O., Rosyanti, R. Muztabadihardja. 2013. Uji Efektivitas Antibakteri Ekstrak Etanol dan Ekstrak Air Kelopak Bunga Rosella (*Hibiscus sabdariffa* L) Terhadap Bakteri *Streptococcus Pneumoniae*. Bogor: *Jurnal Ilmiah Farmasi ITOF*. Vol 3.
- Komala O., Yulianita, Siwi, F.R. 2019. Aktivitas Antijamur Ekstrak Etanol 50% dan Etanol 96% Daun Pacar Kuku *Lawsonia inermis* L. Terhadap *Tricophyton mentagrophytes*. *Ekologia: Jurnal Ilmiah Ilmu Dasar dan Lingkungan Hidup*. 19 (1): 12 – 9.
- Sanguinetti, M., dan Posteraro, B. 2015. Antifungal drug resistance among *Candida* species: mechanisms and clinical impact. *Mycoses*. 58. 2–13.
- Tjampakasari, C.R. Karakteristik *Candida albicans*. *Cermin Dunia Kedokteran* No.151,2006. p.33. Accesed October 29, 2010
- Virganita, J. 2009. *Uji Antibakteri Komponen Bioaktif Daun Lobak (Raphanus sativus L.) terhadap Escherichia coli dan Profil Kromatografi Lapis Tipisnya*. Skripsi. Surakarta: Jurusan biologi Fakultas MIPA Universitas Sebelas Maret Surakarta.

Van Daele, R., *et al.* 2019. Antifungal Drugs: What Brings the Future?.
Med. Mycol. 57 (3): S328 – S343.

LAMPIRAN 1. SKEMA KERJA UMUM



LAMPIRAN 2. KOMPOSISI MEDIA

Medium Potato Dextrose Agar (PDA)

Extract potato	200 gr
Dextrose	20 gr
Agar	15 gr

LAMPIRAN 3. DATA MENTAH HASIL PENELITIAN

Tabel 3. Data mentah hasil uji aktivitas antikandidiasis dari ekstrak kelopak bunga rosella

Sampel	Hari Pengamatan	Diameter Zona Hambat (mm)			Diameter Zona Hambat Rata-rata (mm)
		Replikasi 1	Replikasi 2	Replikasi 3	
Nistatin	Hari 1	26,38	24,79	24,83	25,33 ± 0,91
	Hari 2	24,17	22,48	20,27	22,31 ± 1,96
	Hari 3	23,05	21,11	20,79	21,65 ± 1,22
Ext. ETOH 50% Rosella	Hari 1	15,81	19,54	16,67	17,34 ± 1,95
	Hari 2	20,39	23,20	12,63	18,74 ± 5,47
	Hari 3	20,97	6,00	6,00	10,99 ± 8,64
Ext. ETOH 70% Rosella	Hari 1	14,46	15,66	16,61	15,58 ± 1,08
	Hari 2	9,95	7,08	9,00	8,68 ± 1,46
	Hari 3	12,57	6,00	9,15	9,24 ± 3,29
Ext. ETOH 96% Rosella	Hari 1	16,03	13,19	32,68	20,63 ± 10,53
	Hari 2	6,35	25,07	6,00	10,47 ± 13,03
	Hari 3	6,00	6,00	6,00	6,00 ± 0,00

LAMPIRAN 3. HASIL STATISTIK DATA PENELITIAN

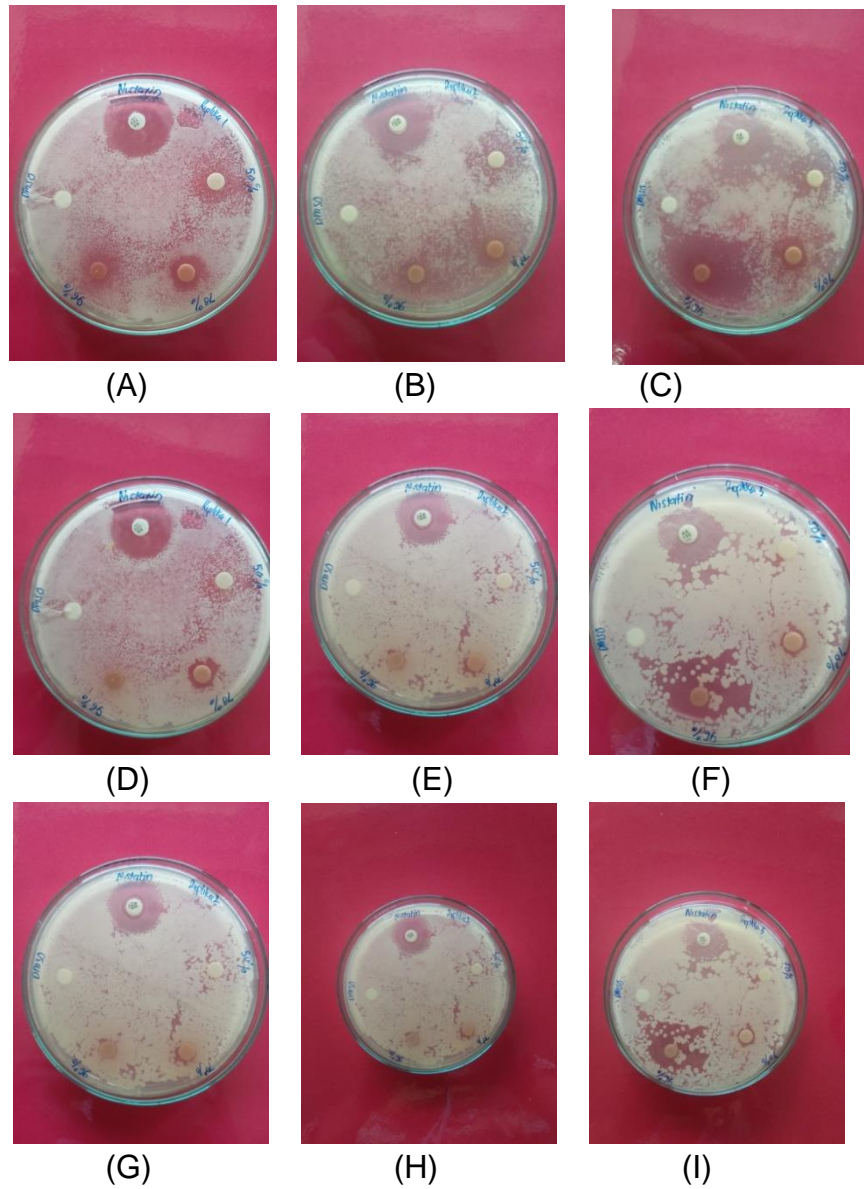
ANOVA results × Multiple comparisons × | v |

2way ANOVA ANOVA results						
1	Table Analyzed	Data 5				
2						
3	Two-way ANOVA	Ordinary				
4	Alpha	0.05				
5						
6	Source of Variation	% of total variation	P value	P value summary	Significant?	
7	Interaction	8.775	0.4625	ns	No	
8	Row Factor	18.10	0.0075	**	Yes	
9	Column Factor	37.16	0.0006	***	Yes	
10						
11	ANOVA table	SS	DF	MS	F (DFn, DFd)	P value
12	Interaction	175.1	6	29.18	F (6, 24) = 0.97	P=0.4625
13	Row Factor	361.2	2	180.6	F (2, 24) = 6.04	P=0.0075
14	Column Factor	741.4	3	247.1	F (3, 24) = 8.28	P=0.0006
15	Residual	717.2	24	29.89		
16						
17	Data summary					
18	Number of columns (Column Factor)	4				
19	Number of rows (Row Factor)	3				
20	Number of values	36				

2way ANOVA Multiple comparisons						
1	Within each row, compare columns (simple effects within rows)					
2						
3	Number of families	3				
4	Number of comparisons per family	6				
5	Alpha	0.05				
6						
7	Tukey's multiple comparisons test	Mean Diff.	95.00% CI of diff.	Below threshold?	Summary	Adjusted P Value
8						
9	Hari 1					
10	Nistatin vs. Etanol 50%	7.993	-4.320 to 20.31	No	ns	0.3021
11	Nistatin vs. Etanol 70%	9.757	-2.557 to 22.07	No	ns	0.1559
12	Nistatin vs. Etanol 96%	4.700	-7.613 to 17.01	No	ns	0.7205
13	Etanol 50% vs. Etanol 70%	1.763	-10.55 to 14.08	No	ns	0.9786
14	Etanol 50% vs. Etanol 96%	-3.293	-15.61 to 9.020	No	ns	0.8809
15	Etanol 70% vs. Etanol 96%	-5.057	-17.37 to 7.257	No	ns	0.6733
16						
17	Hari 2					
18	Nistatin vs. Etanol 50%	3.567	-8.747 to 15.88	No	ns	0.8541
19	Nistatin vs. Etanol 70%	13.63	1.317 to 25.94	Yes	*	0.0262
20	Nistatin vs. Etanol 96%	9.833	-2.480 to 22.15	No	ns	0.1511
21	Etanol 50% vs. Etanol 70%	10.06	-2.250 to 22.38	No	ns	0.1374
22	Etanol 50% vs. Etanol 96%	6.267	-6.047 to 18.58	No	ns	0.5091
23	Etanol 70% vs. Etanol 96%	-3.797	-16.11 to 8.517	No	ns	0.8298
24						
25	Hari 3					
26	Nistatin vs. Etanol 50%	10.66	-1.653 to 22.97	No	ns	0.1065
27	Nistatin vs. Etanol 70%	12.41	0.09675 to 24.72	Yes	*	0.0477
28	Nistatin vs. Etanol 96%	15.65	3.337 to 27.96	Yes	**	0.0092
29	Etanol 50% vs. Etanol 70%	1.750	-10.56 to 14.06	No	ns	0.9791
30	Etanol 50% vs. Etanol 96%	4.990	-7.323 to 17.30	No	ns	0.6823
31	Etanol 70% vs. Etanol 96%	3.240	-9.073 to 15.55	No	ns	0.8858

2way ANOVA Multiple comparisons						
33						
34	Test details	Mean 1	Mean 2	Mean Diff.	SE of diff.	N1
35						
36	Hari 1					
37	Nistatin vs. Etanol 50%	25.33	17.34	7.993	4.464	3
38	Nistatin vs. Etanol 70%	25.33	15.58	9.757	4.464	3
39	Nistatin vs. Etanol 96%	25.33	20.63	4.700	4.464	3
40	Etanol 50% vs. Etanol 70%	17.34	15.58	1.763	4.464	3
41	Etanol 50% vs. Etanol 96%	17.34	20.63	-3.293	4.464	3
42	Etanol 70% vs. Etanol 96%	15.58	20.63	-5.057	4.464	3
43						
44	Hari 2					
45	Nistatin vs. Etanol 50%	22.31	18.74	3.567	4.464	3
46	Nistatin vs. Etanol 70%	22.31	8.677	13.63	4.464	3
47	Nistatin vs. Etanol 96%	22.31	12.47	9.833	4.464	3
48	Etanol 50% vs. Etanol 70%	18.74	8.677	10.06	4.464	3
49	Etanol 50% vs. Etanol 96%	18.74	12.47	6.267	4.464	3
50	Etanol 70% vs. Etanol 96%	8.677	12.47	-3.797	4.464	3
51						
52	Hari 3					
53	Nistatin vs. Etanol 50%	21.65	10.99	10.66	4.464	3
54	Nistatin vs. Etanol 70%	21.65	9.240	12.41	4.464	3
55	Nistatin vs. Etanol 96%	21.65	6.000	15.65	4.464	3
56	Etanol 50% vs. Etanol 70%	10.99	9.240	1.750	4.464	3
57	Etanol 50% vs. Etanol 96%	10.99	6.000	4.990	4.464	3
58	Etanol 70% vs. Etanol 96%	9.240	6.000	3.240	4.464	3

LAMPIRAN 5. DOKUMENTASI PENELITIAN



Gambar 5. Hasil pengujian aktivitas antikandidiasis ekstrak bunga rosella: (A) pengamatan hari pertama replikasi 1, (B) replikasi 2 D1, (C) replikasi 3 D1, (D) replikasi 1 D2, (E) replikasi 2 D2, (F) replikasi 3 D2 (G) replikasi 1 D3, (H) replikasi 2 D3, (I) replikasi 3 D3