

DAFTAR PUSTAKA

- Agarwal M, Shrivastava N, Padh H. 2008. Advances in molecular marker techniques and their applications in plant sciences. *Plant Cell Rep.* 27: 617–631. DOI 10.1007/s00299-008-0507-z.
- Annisa, Hafzari R, Setiawati T, Irawan B, Kusmoro J. 2019. Evaluation of RAPD markers for molecular identification of five bamboo genera from Indonesia. *Folia Forestalia Polonica, Series A-Forestry.* 61(4): 255-266. DOI 10.2478/ffp-2019-0025.
- Arsad E. 2015. Teknologi Pengolahan dan Manfaat Bambu. *Jurnal Riset Industri Hasil Hutan.* 7(1): 45-52.
- Baharuddin, Sanusi D, Putranto1 B, Daud M. 2015. Analisis Pendapatan Petani Hutan Bambu Rakyat di Kecamatan Tanralili, Kabupaten Maros. *Jurnal Matoa.* 3(5): 1-15.
- Botstein D, White RL, Skolnick M, Davis RW. 1980. Construction of a genetic linkage map in man using restriction fragment length polymorphisms. *Am. J. Hum. Genet.* 32: 314–331. PMID 6247908.
- Budiarto BR. 2015. Polymerase Chain Reaction (PCR): Perkembangan dan Perannya dalam Diagnostik Kesehatan. *BioTrends.* 6(2): 29-38.
- Bystriakova N, Kapos V, Lysenko I. 2003. *Bamboo Biodiversity: Information for planning conservation and management in the Asia-Pacific region.* Cambridge: UNEP World Conservation Monitoring Centre.
- Bystriakova N, Kapos V, Lysenko I. 2004. *Bamboo Biodiversity: Africa, Madagascar and the Americas.* Cambridge: UNEP World Conservation Monitoring Centre.
- Cahyanto, T., Arigustin, D., Efendi, M., Suryani, Y., 2016. Keanekaragaman Jenis Bambu di Taman Bambu Siageung Kebun Raya Kuningan Jawa Barat. *Prosiding Seminar MIPA dan Pendidikan MIPA.* 161-168. ISBN 978-602-7902-34-3.
- Canavan S, Richardson DM, Visser V, Roux JJJ, Vorontsova MS, Wilson JRJ. 2016. The global distribution of bamboos: assessing correlates of introduction and invasion. *AoB PLANTS.* 9: 1-18. DOI 10.1093/aobpla/plw078.
- Eevera T, Rajandran K, Saradha S, Lashmi A, 2008. Analysis of genetic variation in selected bamboo species using RAPD. *Tree and Forestry Science and Biotechnology.* 2(1): 54-56.
- Ehtisham M, Wani F, Wani I, Kaur P, Nissar S. 2016. Polymerase Chain Reaction (PCR): Back to Basics. *Indian Journal of Contemporary Dentistry.* 4(2): 30-35. DOI 10.5958/2320-5962.2016.00030.9.

- Ekayanti NW. 2016. Keanekaragaman Hayati Bambu (*Bambusa spp*) di Desa Wisata Penglipuran Kabupaten Bangli. *Jurnal Bakti Saraswati*. 5(2): 132-138. ISSN 2088-2149.
- Erlich HA. 1989. Polymerase Chain Reaction. *J Clin Immunol*. 9(6): 437-447. PMID 2698397. DOI 10.1007/BF00918012.
- Fatchiyah. 2005. PCR: Dasar Teknik Amplifikasi DNA dan Aplikasinya. <http://fatchiyah.lecture.ub.ac.id/teachingresponsibility/general/>.
- Frianto D, Rasyad A, Roslim DI. 2018. Keanekaragaman Genetik *Scorodocarpus Borneensis* di Riau berdasarkan Penanda Molekuler RPAD. *Jurnal Penelitian Kehutanan Sumatera*. 2(1): 27-38. e-ISSN 2581-270X. p-ISSN 2598-0572.
- Garibyan L, Avashia N. 2013. Research Techniques Made Simple: Polymerase Chain Reaction (PCR). *J Invest Dermatol*. 133(3): 1-8. DOI 10.1038/jid.2013.1.
- Guo Z, Fu K, Zhang X, Bai S, Fan Y, Peng Y, Huang L, Yan Y, Liu W, Ma X. 2014. Molecular Insights into the Genetic Diversity of *Hemarthria compressa* Germplasm Collections Native to Southwest China. *Molecules*. 19: 21541-21559. ISSN 1420-3049. DOI 10.3390/molecules191221541.
- Gusmiaty, Restu M, Asrianny, Larekeng SH. 2016. Polimorfisme Penanda RAPD untuk Analisis Keragaman Genetik *Pinusmerkusii* di Hutan Pendidikan Unhas. *Jurnal Natur Indonesia*. 16(2): 47-53. ISSN 1410-9379. e-ISSN 2503-0345
- Hadjar N, Pujirahayu N, Fitriyono E. 2017. Keragaman Jenis Bambu (*Bambusa sp.*) di Kawasan Tahura Nipa-Nipa Kelurahan Mangga Dua. *Ecogreen* 3(1): 9-16. ISSN 2407-9049.
- Handoyo D, Rudiretna A. 2000. Prinsip Umum dan Pelaksanaan Polymerase Chain Reaction (PCR). *Unitas*. 9(1): 17-29. ISSN 0854-3097.
- Hasmawati, Jumardi I, Mawahib A. 2020. Tradisi Mappatabe dalam Masyarakat Bugis di Kecamatan Tanralili Kabupaten Maros (Analisis Implementasi Nilai-Nilai Kearifan Lokal terhadap Pengamalan Sila Kedua Pancasila). *Jurnal PENA*. 7(2): 151-163. e-ISSN 2722-7685.
- Jannah M, Baharuddin, Taskirawati I. 2019. Potensi dan Pemanfaatan Tanaman Bambu pada Lahan Masyarakat di Desa Kading Kabupaten Barru. *Jurnal Perennial*. 15(2): 87-92. e-ISSN 2685-6859. p-ISSN 1412-7784.
- Joko T, Kusumandari N, Hartono S. 2011. Optimasi Metode PCR untuk Deteksi *Pectobacterium carotovorum*, Penyebab Penyakit Busuk Lunak Anggrek. *Jurnal Perlindungan Tanaman Indonesia*. 17(2): 54-59. e-ISSN 2548-4788. p-ISSN 1410-1637.

- Kalle E, Kubista M, Rensing C. 2014. Multi-Template Polymerase Chain Reaction. Biomolecular Detection and Quantification. Elsevier. 2: 11-29. DOI <http://dx.doi.org/10.1016/j.bdq.2014.11.002>.
- Khairi NM, Yong WTL, Kulip J, Rodrigues KF. 2020. A Glance at Molecular Identification of Bamboo (Poaceae: Bambusoideae). Borneo International Journal of Biotechnology. 1: 19-33. e-ISSN 2716-697X. DOI <https://doi.org/10.51200/bijb.vi.2775>.
- Khan MMH, Rafii MY, Ramlee SI, Jusoh M, Mamun MA, Halidu J. 2021. DNA fingerprinting, fixation-index (Fst), and admixture mapping of selected Bambara groundnut (*Vigna subterranea* [L.] Verdc.) accessions using ISSR markers system. Scientific reports. 11: 14527-12549. DOI <https://doi.org/10.1038/s41598-021-93867-5>.
- Konzen ER, Perón R, Ito MA, Brondani GE, Tsai SM. 2017. Molecular identification of bamboo genera and species based on RAPD RFLP markers. Silva Fennica. 51(4): 1-16. ISSN-L 0037-5330. e-ISSN 2242-4075. DOI <https://doi.org/10.14214/sf.1691>.
- Larekeng SH, Dermawan R, Iswoyo H, Mustari K. 2019. RAPD primer screening for amplification on Katokkon pepper from Toraja, South Sulawesi, Indonesia. IOP Conf. Ser.: Earth Environ. Sci. 270(1): 012023. DOI 10.1088/1755-1315/270/1/012023.
- Lebang P, Chahyono. 2016. Pengembangan Usaha Kerajinan Bulu Batti di Desa Allaere. Jurnal Ecosystem. 16(2): 350-360.
- Liana A. 2020. Keanekaragaman Genus Bambu (Poaceae: Bambusoideae) di Indonesia. Prosiding Seminar Nasional Biologi di Era Pandemi COVID-19. 54-57. ISBN: 978-602-72245-5-1.
- Lorenz TC. 2012. Polymerase Chain Reaction: Basic Protocol Plus Troubleshooting and Optimization Strategies. JoVe. 63: 1-15. DOI 10.3791/3998.
- Luo Z, Brock J, Dyer JM, Kutchan T, Schachtman D, Augustin M, Ge Y, Fahlgren N, Abdel-Haleem H. 2019. Genetic Diversity and Population Structure of a *Camelina sativa* Spring Panel. Frontiers. 10(184): 1-12. DOI 10.3389/fpls.2019.00184.
- Makmur MF, Larekeng SH, Restu M. 2020. Genetic Diversity of Eight Types of Bamboo based on Random Amplified Polymorphic DNA (RAPD) Markers. Plant Archives. 20(2): 2333-2337. e-ISSN:2581-6063. ISSN:0972-5210.
- Marchesi JR, Sato T, Weightman AJ, Martin TA, Fry JC, Hiom SJ, Wade WG. 1998. Design and Evaluation of Useful Bacterium Specific PCR Primer that Amplify Genes Coding for Bacterial 16S-rRNA. Applied and Environmental Microbiology. 64: 795-799. PMID 9464425. PMCID PMC106123. DOI 10.1128/AEM.64.2.795-799.1998.

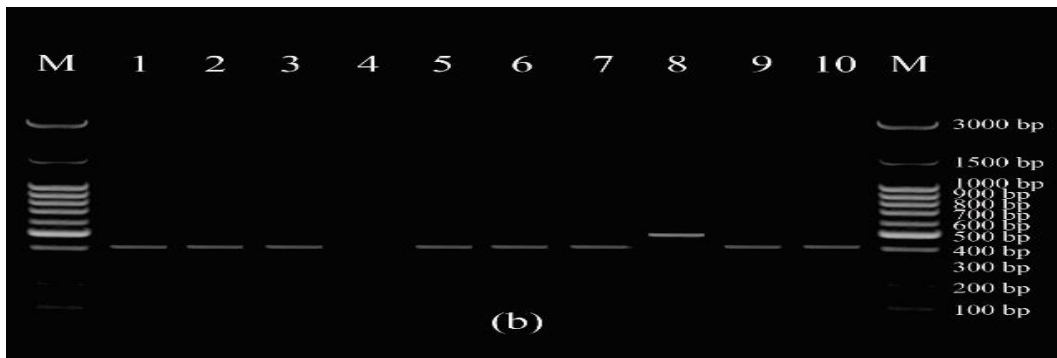
- Misdarti, 2006. Kualitas Bambu Laminasi Asal Kabupaten Toraja, Sulawesi Selatan. *Jurnal Penelitian Hasil Hutan*. 24(3): 183-189.
- Mondini L, Noorani A, Pagnotta MA. 2009. Assessing plant genetic diversity by molecular tools. *Diversity*. 1(1): 19-35. ISSN 1424-2818. DOI 10.3390/d1010019.
- Mulliadi D, Arifin J. 2010. Pendugaan Keseimbangan Populasi dan Heterozigositas Menggunakan Pola Protein Albumin darah pada Populasi Domba Ekor Tipis (*Javanese Thin tailed*) di Daerah Indramayu. *Jurnal Ilmu Ternak*. 10(2): 65-75.
- Muthmainnah, 2017. Upaya Peningkatan Pendapatan Masyarakat Melalui Teknologi Budidaya dan Pemanfaatan Bambu Olahan di Kecamatan Tanralili Kabupaten Maros Provinsi Sulawesi Selatan. *Jurnal Hutan Tropis*. 5(1): 8-13. ISSN 2337-7771. e-ISSN 2337-7992.
- Nasution EZ, 2018. Keanekaragaman Jenis dan Pemanfaatan Bambu (*Bambusa* sp) oleh Masyarakat Sekitar Hutan Kawasan Taman Nasional Batang Gadis. Skripsi. Universitas Sumatera Utara.
- Newton CR, Graham A. 1994. Introduction to biotechniques PCR. UK: Bios Scientific Publisher. Oxford.
- Nurtjahjaningsih ILG, Haryanti T, Widyatmoko AYPBC, Indrioko S, Rimbawanto A. 2015. Keragaman Genetik Populasi *Calophyllum inophyllum* Menggunakan Penanda RAPD (Random Amplification Polymorphism DNA). *Jurnal Pemuliaan Tanaman Hutan*. 9(2): 91-102. DOI 10.20886/jpth.2015.9.2.103-115.
- Pandin DS. 2010. Penanda DNA untuk Pemuliaan Tanaman Kelapa (*Cocos nucifera* L.). *Perspektif*. 9(1): 21-35. ISSN 1412-8004.
- Pérez-Alquicira J, Aguilera-López S, Rico Y, Ruiz-Sanchez E. 2021. A Population Genetics Study of Three Native Mexican Woody Bamboo Species of *Guadua*. *Botanical Sciences*. 99(3): 542-559. DOI 10.17129/botsci.2795.
- Pertiwi NPD, Mahardika IGKN, Watiniasih NL. 2015. Optimasi Amplifikasi DNA Menggunakan Metode PCR (Polymerase Chain Reaction) pada Ikan Karang Anggota Famili Pseudochromidae (*Dottyback*) untuk Identifikasi Spesies secara Molekular. *Jurnal Biologi*. 19(2): 1-5. ISSN 1410-5292.
- Poerba YS, Wawo AH, Yulita KS. 2007. Keragaman Fenotipe RAPD *Santalum album* L. di Pulau Timor Bagian Timur. *Berita Biologi*. 8(6): 537-546. e-ISSN 2337-8751. p-ISSN 0126-1754.
- Powledge TM. 2004. The Polymerase Chain Reaction. *Journal Physiology Education*. 28(1): 44-50. DOI 10.1152/advan.00002.2004.

- Putro DS, Jumari, Murningsih. 2014. Keanekaragaman Jenis dan Pemanfaatan Bambu di Desa Lopait Kabupaten Semarang Jawa Tengah. *Jurnal Biologi*. 3(2): 71-79.
- Rohlf FJ. 1988. NTSYSpc, Numerical Taxonomy and Mulivariate Analysis System Version 2.0. New York: Exeter Software.
- Rychlik W, Spencer WJ, Rhoads RE. 1990. Optimization of The Annealing Temperature for DNA amplification in vitro. *Nucleic Acids Res*. 18(21): 6409-6412. PMID 2243783. DOI 10.1093/nar/18.21.6409.
- Sary N, Fahrizal, Yani A. 2018. Jenis Bambu di Hutan Tembawang Desa Suka Maju Kecamatan Sungai Betung Kabupaten Bengkayang. *Jurnal Hutan Lestari*. 6(3): 637-646.
- Sasmito DEK, Kurniawan R, Muhimmah I. 2014. Karakteristik Primer pada Polymerase Chain Reaction (PCR) untuk Sekuensing DNA: Mini Review. *SNIMed*. 93-102.
- Setiawati T, Mutaqin AZ, Irawan B, An'amillah A, Iskandar J. 2017. Species diversity and utilization of bamboo to support life's the community of Karangwangi Village, Cidaun Sub-District of Cianjur, Indonesia. *Biodiversitas*. 18(1): 58-64. ISSN 1412-033X. e-ISSN 2085-4722. DOI 10.13057/biodiv/d180109.
- Shampo MA, Kyle RA. 2002. Kary B. Mullis-Nobel Laureate for procedure to replicate DNA: Mayo Clinic Proceedings. Elsevier. PMID 12108595 DOI 10.4065/77.7.606.
- Siahaan MV, Herawatiningsih R, Tavita GE. 2020. Keanekaragaman Jenis Bambu di Kawasan Kebun Raya Sambas Kecamatan Subah Kabupaten Sambas Provinsi Kalimantan Barat. *Jurnal Hutan Lestari*. 8(1): 10-21.
- Singh J, Birbian N, Sinha S, Goswami A. 2014. A Critical Review on PCR, its Types and Applications. *Int. J. Adv. Res. Biol. Sci*. 1(7): 65–80. ISSN 2348-8069.
- Sinyo Y, Sirajudin N, Hasan S. 2017. Pemanfaatan Tumbuhan Bambu: Kajian Empiris Etnoekologi pada Masyarakat Kota Tidore Kepulauan. *Saintifik*. 1(2): 57-69. e-ISSN 2598-3822.
- Sujarwo W. 2018. Bamboo Resources, Cultural Values, and Ex-Situ Conservation in Bali, Indonesia. *Reinwardtia*. 17(1): 67–75. ISSN 0034-365X. e-ISSN 2337-8824.
- Sulistiyawati P, Widyatmoko AYPBC. 2017. Keragaman Genetik Populasi Kayu Merah (*Pterocarpus indicus* Willd) Menggunakan Penanda Random Amplified Polymorphism DNA. *Jurnal Pemuliaan Tanaman Hutan*. 11(1): 67-76. p-ISSN 1693-7147. e-ISSN 2527-8665.
- Tjitrosoepomo G. 2013. Taksonomi Tumbuhan Spermatophyta. Yogyakarta: Gadjah Mada University Press.

- Usman, 2019. Pemanfaatan Bambu oleh Masyarakat Desa Babane Kecamatan Samalantan Kabupaten Bengkulu. *Jurnal Hutan Lestari*. 7(2): 655-667. ISSN 2338-3127. e-ISSN 2776-1754. DOI <http://dx.doi.org/10.26418/jhl.v7i2.33013>.
- Waghmare VN, Badge US. 2013. Random amplified polymorphic DNA based genetic characterization of four important species of Bamboo, found in Raigad district, Maharashtra State, India. *African Journal of Biotechnology*. 12(28): 4446-4452. ISSN 1684-5315. DOI 10.5897/AJB2013.12033.
- Wallace L. 2003. Methods available for the analysis of data from dominant molecular markers. Departemen of Biology. University of South Dakota.
- Weeden NF, Timmerman GM, Hemmat M, Kneen BE, Lodhi MA. 1992. Inheritance and reliability of RAPD markers. In: *Applications of RAPD Technology to Plant Breeding*. Joint Plant Breeding Symposia Series. Madison: MN. Crop Science Society of America.
- Weising K, Nybon H, Wolft K, Meyer W. 1995. *DNA Finger Printing in Plants and Fungi*. London: CRC Press.
- Widjaja EA. 2001. *Identikit Jenis-jenis Bambu di Jawa*. Bogor: Puslitbang Biologi-LIPI.
- Widnyana K. 2012. Bambu dengan berbagai manfaatnya. *Bumi Lestari*. 8(1): 1-10. ISSN 2527-6158.
- Yani AP. 2012. Keanekaragaman dan Populasi Bambu di Desa Talang Pauh Bengkulu Tengah. *Jurnal Exacta*. 10(1): 61-70. ISSN 1412-3617.
- Yeasmin L, Ali MN, Gantait S, Chakraborty S. 2015. Bamboo: an overview on its genetic diversity and characterization. *Biotech*. 5: 1-11. DOI 10.1007/s13205-014-0201-5.
- Yu M, Cao Y, Ji Y. 2017. The principle and application of new PCR Technologies. *IOP Conf. Ser.: Earth Environ. Sci.* 100(1): 1-4. DOI 10.1088/1755-1315/100/1/012065.
- Zhang HY, Yang YM, Liu XZ. 2011. Bamboo species relations revealed by random amplified polymorphism chloroplast DNA. *Afr. J. Agric. Res.* 6(5): 1241-1245. ISSN 1991-637X. DOI 10.5897/AJAR10.794.
- Zulfahmi, 2013. Penanda DNA untuk Analisis Genetik Tanaman. *Jurnal Agroteknologi*. 3(2): 41-52.

LAMPIRAN

Lampiran 1. Elektroforegram Sampel pada Primer OPZ-05 dan OPP-08



Keterangan: Primer OPZ-05

(a) Bambu Banua/Tali *Gigantochloa apus* (Schult.f.) Kurz, (b) Bambu Duri *Bambusa blumeana* Schult.f (c) Bambu Karisa/Pancing *Schizostachyum lima* (Blanco) Merr., (d) Bambu Parring *Gigantochloa atter* (Hassk.) Kurz

Lanjutan Lampiran 1.



Keterangan: Primer OPP-08

(a) Bambu Banua/Tali *Gigantochloa apus* (Schult.f.) Kurz, (b) Bambu Duri *Bambusa blumeana* Schult.f (c) Bambu Karisa/Pancing *Schizostachyum lima* (Blanco) Merr., (d) Bambu Parring *Gigantochloa atter* (Hassk.) Kurz

Lampiran 2. Data Biner Keragaman Genetik Bambu

Sampel	OPA-15			OPZ-05		OPAE-11		OPAA-20				OPK-20			OPQ-07				OPA-02			OPD-03		OPA-09			OPP-08			
	400 bp	600 bp	700 bp	400 bp	500 bp	500 bp	600 bp	400 bp	500 bp	550 bp	700 bp	400 bp	500 bp	700 bp	400 bp	600 bp	700 bp	900 bp	500 bp	700 bp	800 bp	400 bp	600 bp	400 bp	500 bp	600 bp	400 bp	500 bp		
D1	0	1	0	1	0	1	0	0	1	0	0	1	1	0	1	0	1	0	0	1	1	1	1	0	1	1	0	0	1	
D2	0	0	0	1	0	0	0	0	1	0	0	0	1	0	1	0	1	0	0	0	0	1	1	0	0	1	1	0	1	
D3	0	0	0	1	0	0	0	0	1	0	0	0	1	1	1	1	0	1	0	0	1	1	1	0	1	1	0	0	1	
D4	0	0	0	0	0	0	1	0	1	0	0	1	1	0	0	0	1	0	0	1	1	1	1	0	1	1	0	0	1	
D5	0	1	0	1	0	0	1	0	1	0	0	1	1	1	1	1	0	1	0	0	1	1	1	1	0	1	1	0	1	
D6	0	0	0	1	0	0	0	0	1	0	0	1	1	1	1	1	0	1	0	0	0	1	1	0	1	1	0	0	1	
D7	0	0	0	1	0	0	0	0	1	0	0	1	1	0	1	1	0	1	0	0	1	1	0	1	1	0	0	0	1	
D8	0	1	0	0	1	0	0	0	1	0	0	0	1	1	1	1	0	1	0	0	1	1	1	1	0	1	1	0	1	
D9	0	1	0	1	0	0	0	0	1	0	0	1	1	1	1	1	0	0	0	0	1	1	1	1	0	1	1	0	1	
D10	0	0	0	1	0	0	0	0	1	0	0	0	1	1	1	1	0	1	0	0	1	1	0	1	1	0	0	0	1	
B1	0	0	0	1	0	0	1	0	1	0	0	1	0	0	1	0	0	1	1	0	1	1	0	1	0	0	1	1		
B2	0	0	0	1	0	0	0	0	1	0	0	0	0	1	0	0	0	1	1	0	1	1	0	1	0	0	1	1		
B3	0	0	0	1	0	1	0	0	1	0	0	1	0	0	1	0	0	1	1	0	0	1	0	1	0	0	1	1		
B4	0	0	0	1	0	1	0	0	1	0	0	1	0	0	1	0	0	1	1	0	0	1	0	1	0	0	1	1		
B5	1	0	0	1	0	1	0	0	1	0	0	1	0	0	1	0	0	1	1	0	0	1	0	1	0	0	1	1		
B6	0	1	0	1	0	1	0	0	1	0	1	1	0	1	1	0	0	1	1	0	0	1	0	1	0	0	1	1		
B7	1	0	0	1	0	0	0	0	1	0	0	0	0	1	1	0	0	1	1	0	0	1	0	1	0	0	1	1		
B8	0	1	0	1	0	0	0	0	1	0	0	1	0	1	0	0	0	1	1	0	1	1	0	1	0	0	1	1		
B9	1	0	0	1	0	0	0	0	1	0	0	1	0	0	1	0	0	1	1	0	0	1	0	1	0	0	1	1		
B10	0	1	0	1	0	0	1	0	1	0	1	1	0	0	1	0	0	1	1	0	1	1	0	1	0	0	1	1		
K1	0	0	0	1	0	1	0	1	0	1	0	1	1	1	1	1	0	0	0	1	0	0	0	1	0	0	1	1	1	
K2	0	0	0	1	0	1	0	0	0	1	0	1	0	0	1	1	0	0	0	1	0	0	0	1	1	0	1	1	1	
K3	1	0	0	1	0	1	1	0	0	1	0	0	0	1	1	1	0	0	0	1	0	0	1	1	0	1	0	1	1	
K4	0	1	0	1	0	1	1	1	0	1	0	0	0	1	1	1	0	0	0	1	0	1	0	1	0	1	0	1	1	
K5	0	0	1	1	0	1	0	1	0	1	0	1	0	1	1	1	0	0	0	0	0	0	0	1	1	0	1	1	1	
K6	0	0	0	1	0	0	0	0	0	0	0	1	0	1	1	0	0	0	0	1	0	0	0	1	0	1	1	1	1	
K7	1	1	0	1	0	1	0	0	0	0	0	1	0	1	1	0	0	0	0	1	0	0	1	0	0	1	0	1	1	
K8	0	0	0	1	0	1	0	1	0	1	0	0	0	0	1	0	0	0	0	0	0	0	0	1	0	1	1	1	1	
K9	0	0	0	1	0	1	0	1	0	1	0	1	0	1	1	1	0	0	0	0	1	0	0	1	1	0	1	1	1	
K10	0	0	0	1	0	0	0	1	0	1	0	1	0	1	1	0	0	0	0	1	0	0	0	1	1	0	1	1	1	
P1	1	1	0	0	0	1	0	0	0	0	1	1	0	0	1	0	0	0	1	0	0	1	0	1	1	0	0	1	1	
P2	1	1	0	1	0	1	0	0	0	0	1	0	0	0	1	0	0	0	0	0	0	1	0	1	1	0	0	1	1	
P3	0	0	0	1	0	1	0	0	0	0	1	1	0	0	1	0	0	0	0	0	0	1	0	1	1	0	0	1	1	
P4	0	0	0	1	0	1	0	0	0	0	1	1	0	0	1	0	0	0	0	0	0	1	0	1	1	0	0	1	1	
P5	0	0	0	1	0	1	0	1	0	0	1	1	0	0	1	0	0	0	1	0	0	1	0	0	0	0	0	0	1	1
P6	0	1	0	1	0	0	0	0	0	0	0	1	0	0	1	0	0	0	0	0	0	1	0	1	0	0	0	0	1	1
P7	0	1	0	0	0	1	0	0	0	0	0	1	0	0	1	0	0	0	0	0	0	1	0	0	1	0	0	1	1	
P8	0	0	0	1	0	1	0	0	0	0	1	0	0	0	1	0	0	0	0	0	0	1	0	0	1	0	1	1	1	
P9	0	0	0	1	0	0	0	0	0	0	0	1	0	0	1	0	0	0	1	0	0	1	0	1	1	0	1	1	1	
P10	0	0	1	1	0	1	0	0	0	0	1	1	0	0	1	0	0	0	1	0	0	1	0	0	0	1	1	1	1	

Lampiran 3. Jenis Bambu di Kawasan Kampung Bambu, Desa Toddopulia



(a)



(b)



(c)



(d)

Keterangan: Bambu Banua/Tali *Gigantochloa apus* (J. A & J. H Schultes) Kurz
(a) Batang/buluh bambu, (b) Percabangan, (c) Daun bagian belakang, (d) Daun bagian depan

Lanjutan Lampiran 3.



(e)



(f)



(g)



(h)

Keterangan: Bambu Duri *Bambusa blumeana* J. A & J. H Schult

(e) Batang/buluh bambu, (f) Percabangan, (g) Daun bagian belakang, (h) Daun bagian depan

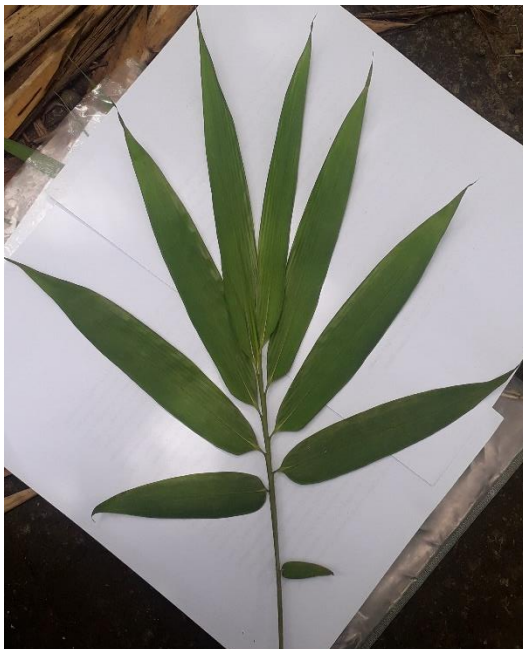
Lanjutan Lampiran 3.



(i)



(j)



(k)



(l)

Keterangan: Bambu Karisa/Pancing *Schizostachyum lima* (Blanco) Merr.

(i) Batang/buluh bambu, (j) Percabangan, (k) Daun bagian belakang, (l) Daun bagian depan

Lanjutan Lampiran 3.



(m)



(n)



(o)



(p)

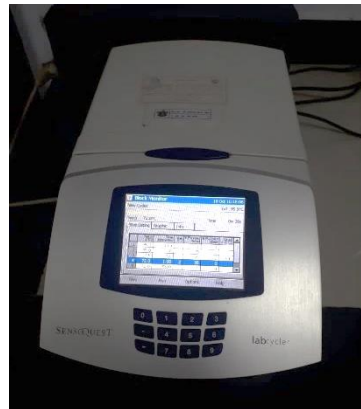
Keterangan: Bambu Parring *Gigantochloa atter* (Hassk.) Kurz

(m) Batang/buluh bambu, (n) Percabangan, (o) Daun bagian belakang, (p) Daun bagian depan

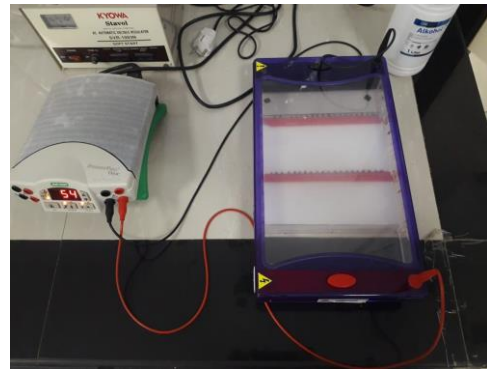
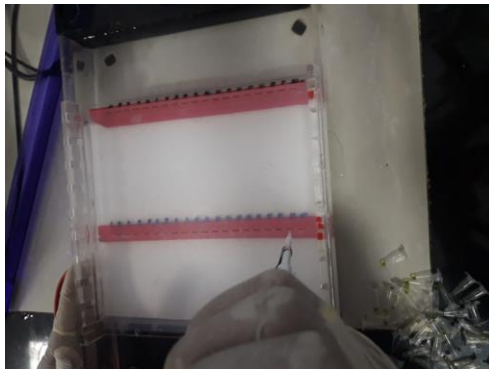
Lampiran 4. Dokumentasi Penelitian



(a)



(b)



(c)

Keterangan: (a) Pengambilan sampel, (b) Proses Amplifikasi DNA (PCR),
(c) Elektroforesis sampel.

Lanjutan Lampiran 4.



(d)

Keterangan: (d) Proses Visualisasi Menggunakan Geldoc

Lampiran 5. Lokasi Penelitian



(a)



(b)

Keterangan: (a) Kantor Kecamatan Tanralili, (b) Kantor Desa Toddopulia

Lanjutan Lampiran 5.



(c)



(d)

Keterangan: Kawasan Kampung Bambu