

DAFTAR PUSTAKA

- [1] “History of Autonomous Driving” [Online]. Available: <https://futurama.io/history-of-autonomous-driving/> [Accessed: 02-Mar-2020].
- [2] G. Yang, Y. Wang, J. Yang, and Z. Lu, “Fast and Robust Vanishing Point Detection Using Contourlet Texture Detector for Unstructured Road,” *IEEE Access*, vol. 7, pp. 139358–139367, 2019, doi: 10.1109/ACCESS.2019.2944244.
- [3] “Bagaimana Mobil Self-Driving Bekerja.” [Online]. Available: <https://inixindojogja.co.id/bagaimana-mobil-self-driving-bekerja> [Accessed: 12-Mar-2020].
- [4] S. Asadi, B. Madjid, M. Asadi dan T. Oliver, “Autonomous vehicles : challenges, opportunities, and future implications for transportation policies,” *J. Mod. Transp.*, vol. 24, no. 4, pp. 284–303, 2016, doi: 10.1007/s40534-016-0117-3.
- [5] I.P. Wardhani dkk. “Segmentasi Warna Citra HSV dan Deteksi Objek Kupu-Kupu Dengan Metode Klasifikasi K-Means”. *Seminar Nasional Teknologi Informasi dan Komunikasi STI&K (SeNTIK) Volume 3 Nomor 1*, 22 Agustus 2019, ISSN: 2581-2327.
- [6] P. Ganesan, V. Rajini, B. S. Sathish, and K. B. Shaik, “HSV Color Space Based Segmentation Of Region Of Interest In Satellite Images,” *2014 Int. Conf. Control. Instrumentation, Commun.*

- Comput. Technol. ICCICCT 2014*, pp. 101–105, 2014, doi: 10.1109/ICCICCT.2014.6992938.
- [7] Sujeet Das. “Comparison of Various Edge Detection Technique”. *International Journal of Signal Processing, Image Processing and Pattern Recognition*, Vol.9, No.2 (2016), pp.143-158, doi: <http://dx.doi.org/10.14257/ijcip.2016.9.2.13>.
- [8] M. Khairudin dan D. Irmawati, “Comparison Methods Of Edge Detection For USG Images,” *Proc. - 2016 3rd Int. Conf. Inf. Technol. Comput. Electr. Eng. ICITACEE 2016*, pp. 85–88, 2017, doi: 10.1109/ICITACEE.2016.7892416.
- [9] A. Kadir dan A. Susanto, “Teori dan Aplikasi Pengolahan Citra, Ed. I. Yogyakarta: Andi, 2013.
- [10] I. D. Kurniawati dan I. A. Kusumawardhani, “Implementasi Algoritma Canny dalam Pengenalan Wajah menggunakan Antarmuka GUI Matlab,” *J. Inst. Teknol. Sepuluh Nop.*, no. December, pp. 3–8, 2017.
- [11] The MathWorks, Inc. “Edge detection methods for finding object boundaries in images” [Online]. Available: <https://www.mathworks.com/discovery/edge-detection.html> [Accessed: 09-Feb-2020].
- [12] S. Singh dan A. Datar, “Edge Detection Techniques Using Hough Transform,” *Int. J. Emerg. Technol. Adv. Eng.*, vol. 3, no. 6, pp. 333–337, 2013.

- [13] H. Komori dan K. Onoguchi, "Driving Lane Detection Based on Recognition of Road Boundary Situation," *2018 Int. Conf. Digit. Image Comput. Tech. Appl. DICTA 2018*, pp. 1–8, 2019, doi: 10.1109/DICTA.2018.8615784.
- [14] M. D. E. Munajat, D. H. Widyantoro, dan R. Munir, "Road Detection System Based On RGB Histogram Filterization and Boundary Classifier," *ICACSYS 2015 - 2015 Int. Conf. Adv. Comput. Sci. Inf. Syst. Proc.*, pp. 195–200, 2016, doi: 10.1109/ICACSYS.2015.7415163.
- [15] I. K. Somawirata dan F. Utaminigrum, "Road Detection Based On The Color Space and Cluster Connecting," *2016 IEEE Int. Conf. Signal Image Process. ICSIP 2016*, pp. 118–122, 2017, doi: 10.1109/SIPROCESS.2016.7888235.
- [16] Z. Ying dan G. Li, "Robust Lane Marking Detection Using Boundary-Based Inverse Perspective Mapping" *2016 IEEE International Conference on Acoustics, Speech and Signal Processing (ICASSP)*, pp. 1921–1925, 2016. doi: 10.1109/ICASSP.2016.7472011.
- [17] X. Ming, Z. Juan dan F. Zhijun, "Research On Unstructured Road Detection Algorithm Based On Improved Morphological Operations" *2017 IEEE 4th International Conference on Smart and Sustainable City (ICSSC)*. doi: 10.1049/cp.2017.0104.
- [18] L. Xiao, B. Dai, T. Hu, dan T. Wu, "Fast unstructured road detection and tracking from monocular video," *Proc. 2015 27th Chinese*

- Control Decis. Conf. CCDC 2015, pp. 3974–3980, 2015, doi: 10.1109/CCDC.2015.7162618.
- [19] J. Shi, J. Wang, dan F. Fu, “Fast and Robust Vanishing Point Detection for Unstructured Road Following,” *IEEE Transactions On Intelligent Transportation Systems*. vol. 17, no. 4, pp. 1–10, 2015
- [20] W. Xiang, Z. Juan dan F. Zhijun, “Unstructured Road Detection Based On Contour Selection,” *4th International Conference on Smart and Sustainable City (ICSSC 2017)*.
- [21] R. K. Kumar, C. Jada, M. G. I. Feroz, V. A. Kumar, and H. Yenala, “ROBOG an autonomously navigating vehicle based on road detection for unstructured road,” *Int. Conf. Signal Process. Commun. Eng. Syst. - Proc. SPACES 2015, Assoc. with IEEE*, pp. 29–33, 2015, doi: 10.1109/SPACES.2015.7058277.
- [22] L. Wu, Q. Yu, T. Xu, and S. Zhang, “An unstructured road detection method with multi-environmental adaptability,” *Int. J. Simul. Syst. Sci. Technol.*, vol. 17, no. 12, pp. 16.1-16.6, 2016, doi: 10.2013/IJSSST.a.17.12.16.
- [23] M. Li, Y. Li, and M. Jiang, “Lane Detection Based on Connection of Various Feature Extraction Methods,” *Advances in Multimedia*, vol. 2018, 2018, doi: 10.1155/2018/8320207.

Lampiran 1. Penyesuaian lokasi mobil menggunakan *Google Maps* pada saat proses deteksi jalan.



Center Offset = 23.23 cm



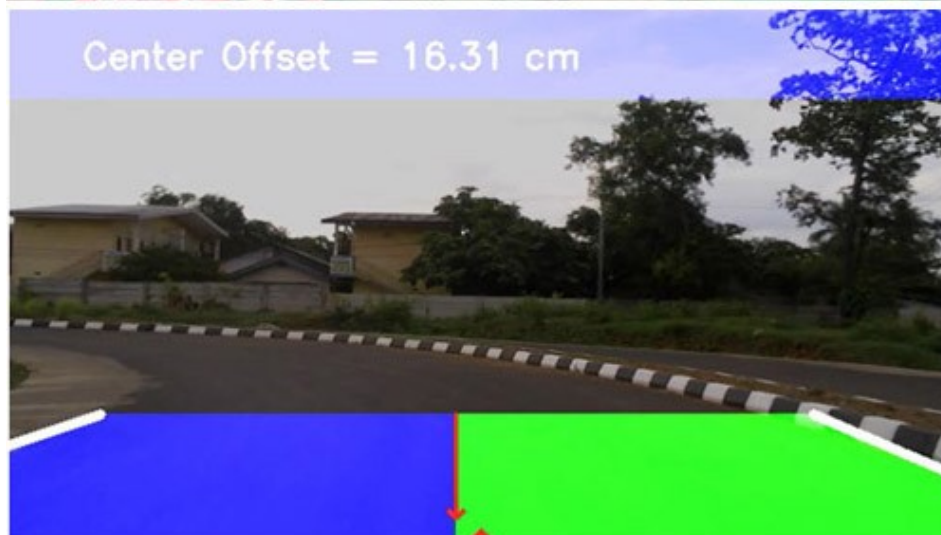
Proses Deteksi Pada Jarak ± 37 m dari titik 0



Center Offset = 10.18 cm



Proses Deteksi Pada Jarak ± 165 m dari titik 0



Proses Deteksi Pada Jarak ± 217 m dari titik 0



Center Offset = 24.87 cm



Proses Deteksi Pada Jarak ± 289 m dari titik 0



Proses Deteksi Pada Jarak ± 358 m dari titik 0



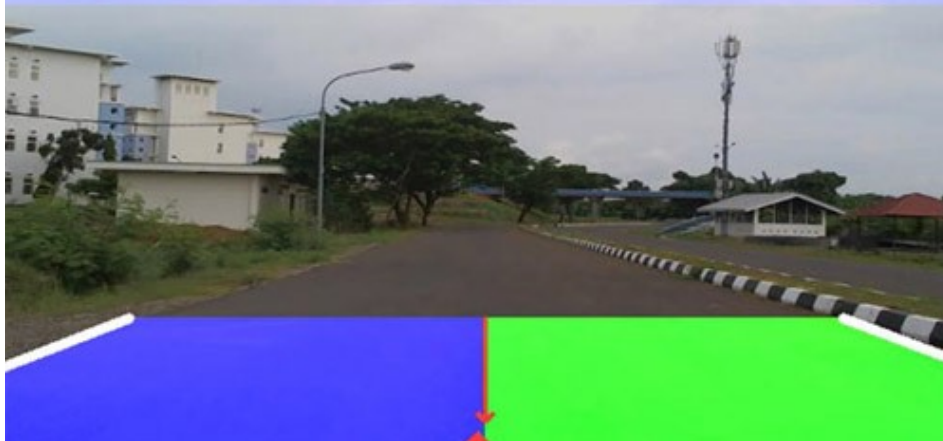
Proses Deteksi Pada Jarak ± 478 m dari titik 0



Proses Deteksi Pada Jarak ± 554 m dari titik 0



Center Offset = -5.07 cm



Proses Deteksi Pada Jarak ± 647 m dari titik 0



Proses Deteksi Pada Jarak ± 734 m dari titik 0



Proses Deteksi Pada Jarak ± 845 m dari titik 0



Center Offset = 24.32 cm



Proses Deteksi Pada Jarak ± 951 m dari titik 0



Proses Deteksi Pada Jarak ± 1060 m dari titik 0



Proses Deteksi Pada Jarak ± 1.150 m dari titik 0



Proses Deteksi Pada Jarak ± 1.290 m dari titik 0



Proses Deteksi Pada Jarak ± 1.390 m dari titik 0



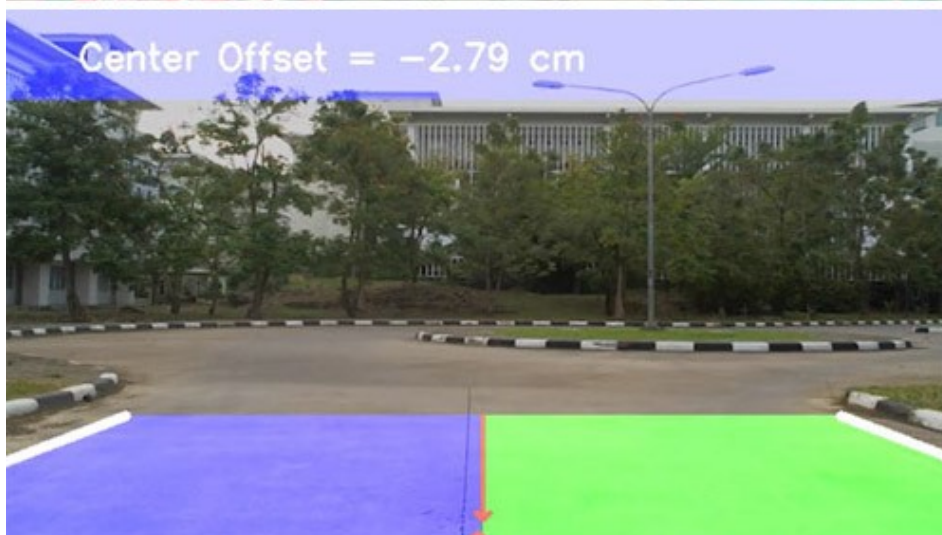
Proses Deteksi Pada Jarak ± 1.500 m dari titik 0



Proses Deteksi Pada Jarak ± 1.600 m dari titik 0



Proses Deteksi Pada Jarak ± 1.700 m dari titik 0



Proses Deteksi Pada Jarak ± 1.760 m dari titik 0



Proses Deteksi Pada Jarak ± 1.840 m dari titik 0



Proses Deteksi Pada Jarak ± 1.940 m dari titik 0