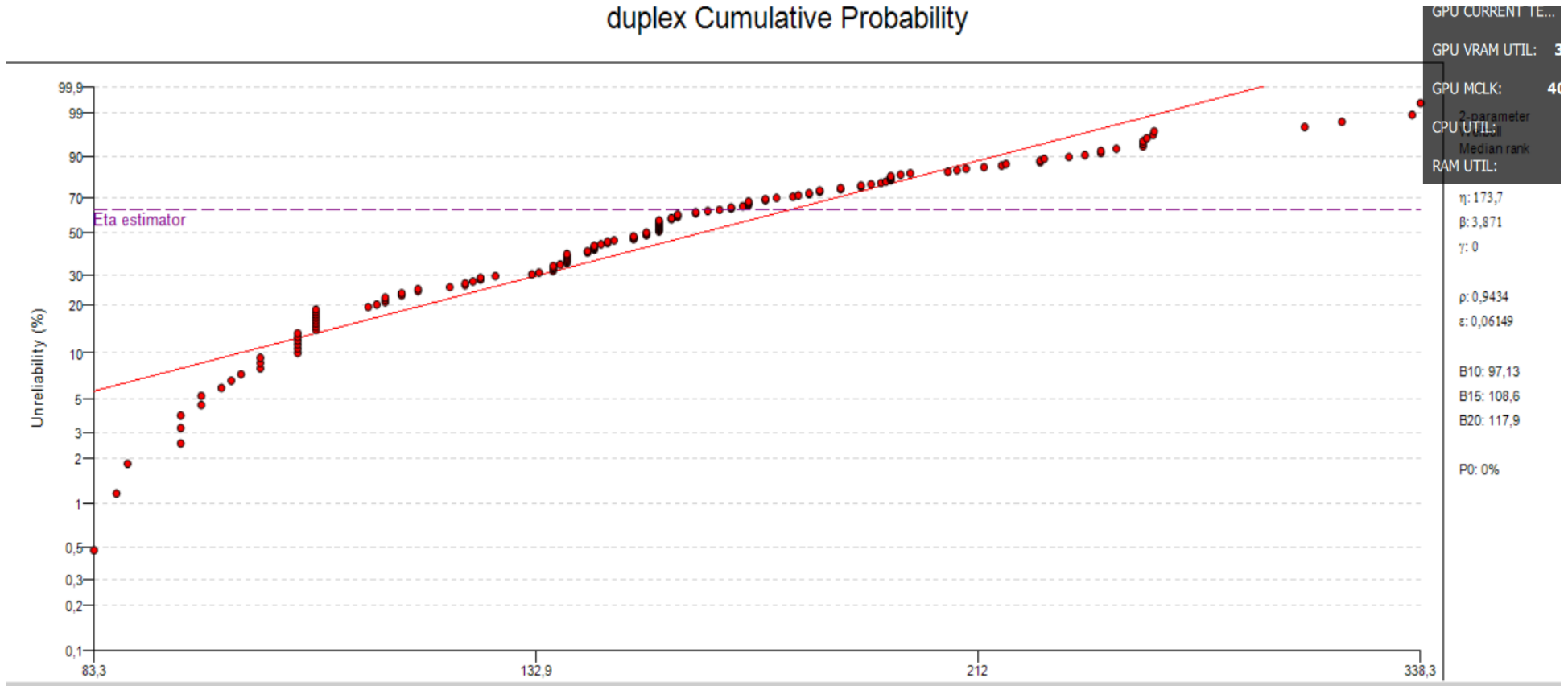


DAFTAR PUSTAKA

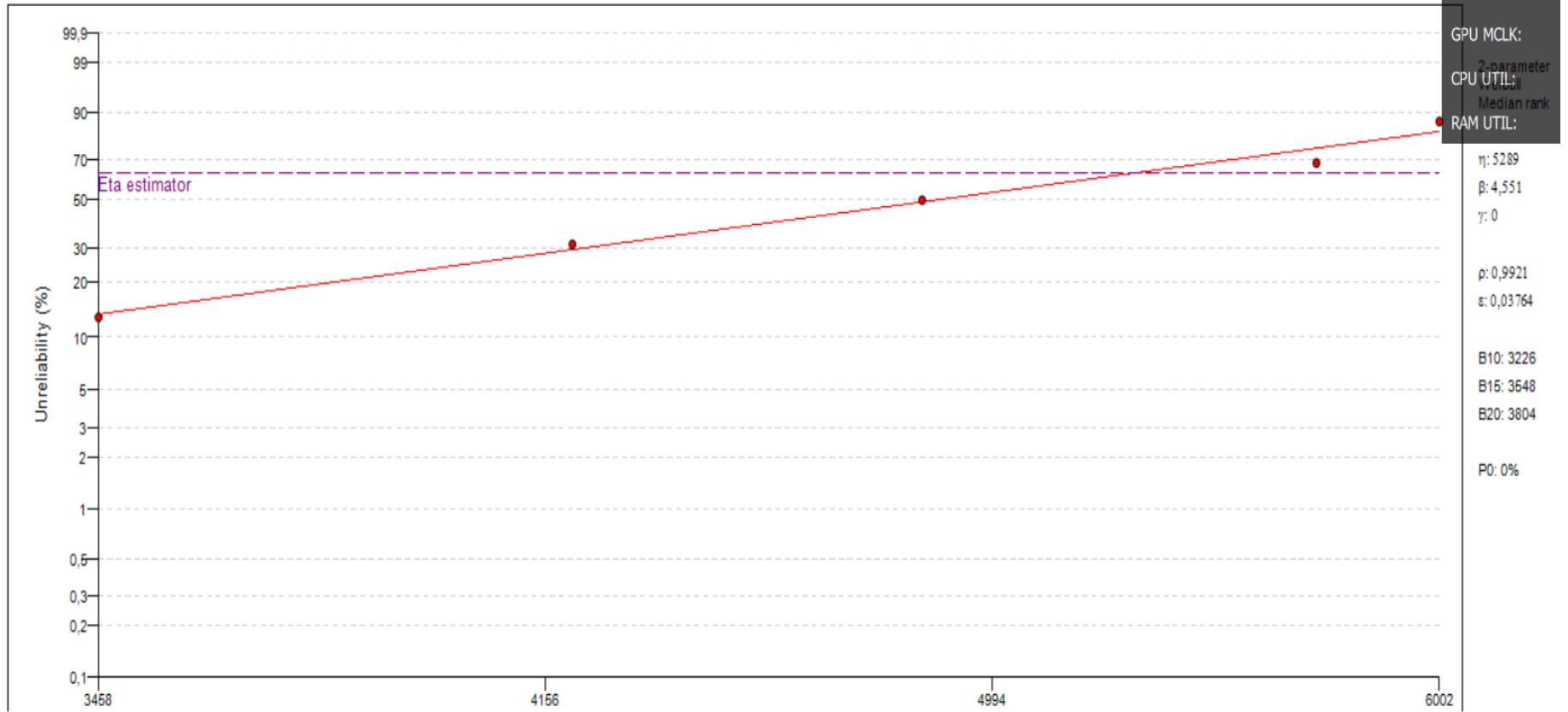
- [1] Artana, K.B. & Dinariyana, A.A.B. 2013. *Teori Keandalan Sistem dan Aplikasinya*. Surabaya : Inti Karya Guna.
- [2] Dhillon, B.S. 2002. *Engineering Maintenance*. Boca Raton, USA: CRC Press.
- [3] Yusuf, Zulkifli A. “ *Analisa Perawatan Berbasis Resiko Pada Sistem Pelumas KM> Lambelu*”, Jurnal Riset dan Teknologi Kelautan (JRTK) Volume 14, Nomor 1. 2016
- [4] Prasetyo, Gigih. *Penilaian Risiko Dan Perencanaan Pada Sistem Peipaan Menggunakan Metode Risk Based Inspection DNV- G101*. Skripsi, Jurusan Sistem Perkapalan, Fakultas Teknologi Kelautan, Institut Teknologi Sepuluh Nopember, Surabaya, 2016.
- [5] Risaldy, Zeid. *Analisa Keandalan Sistem Bahan Bakar Dengan Metode Risk Based Inspection And Maintenance (RBIM) Pada KM. Lambelu*. Skripsi, Jurusan Perkapalan Universitas Hasanuddin, Makassar, 2016
- [6] Maharani, Lintang. *Analisa Pengaruh Jadwal Operasi Dan Jadwal Perawatan Aluminium Crew Boat CB. X Terhadap Kegagalan Fungsi Bow Thruster Dengan Pemodelan Dinamika Sistem (System Dynamics)*. Skripsi, Jurusan Sistem Perkapalan, Fakultas Teknologi Kelautan, Institut Teknologi Sepuluh Nopember, Surabaya, 2016.
- [7] Nusantara, Good Year Surya. *Pengaruh Efek Perawatan Terhadap Sistem Pendukung Mesin Induk Pada Kapal Dengan Menggunakan Pemodelan Dinamika Sistem*. Skripsi, Jurusan Sistem Perkapalan, Fakultas Teknologi Kelautan, Institut Teknologi Sepuluh Nopember, Surabaya, 2015.
- [8] Kusuma, I Putu Andhi Indra, “ *Studi Analisa Keandalan Dan Jadwal Perawatan Sistem Bahan Bakar Di Kapal Dengan Pemodelan Dinamika Sistem*”, Seminar Nasional Sains Dan Teknologi Terapan III. 201
- [9] M. Taufik Bastian, “*Analisa Resiko FMECA Pada Kamar Mesin KMP. Takabonerate 500 GT*”, skripsi, Universitas Hasanuddin, Makassar, 2020.

LAMPIRAN

Lampiran 1 parameter filter duplex
duplex Cumulative Probability

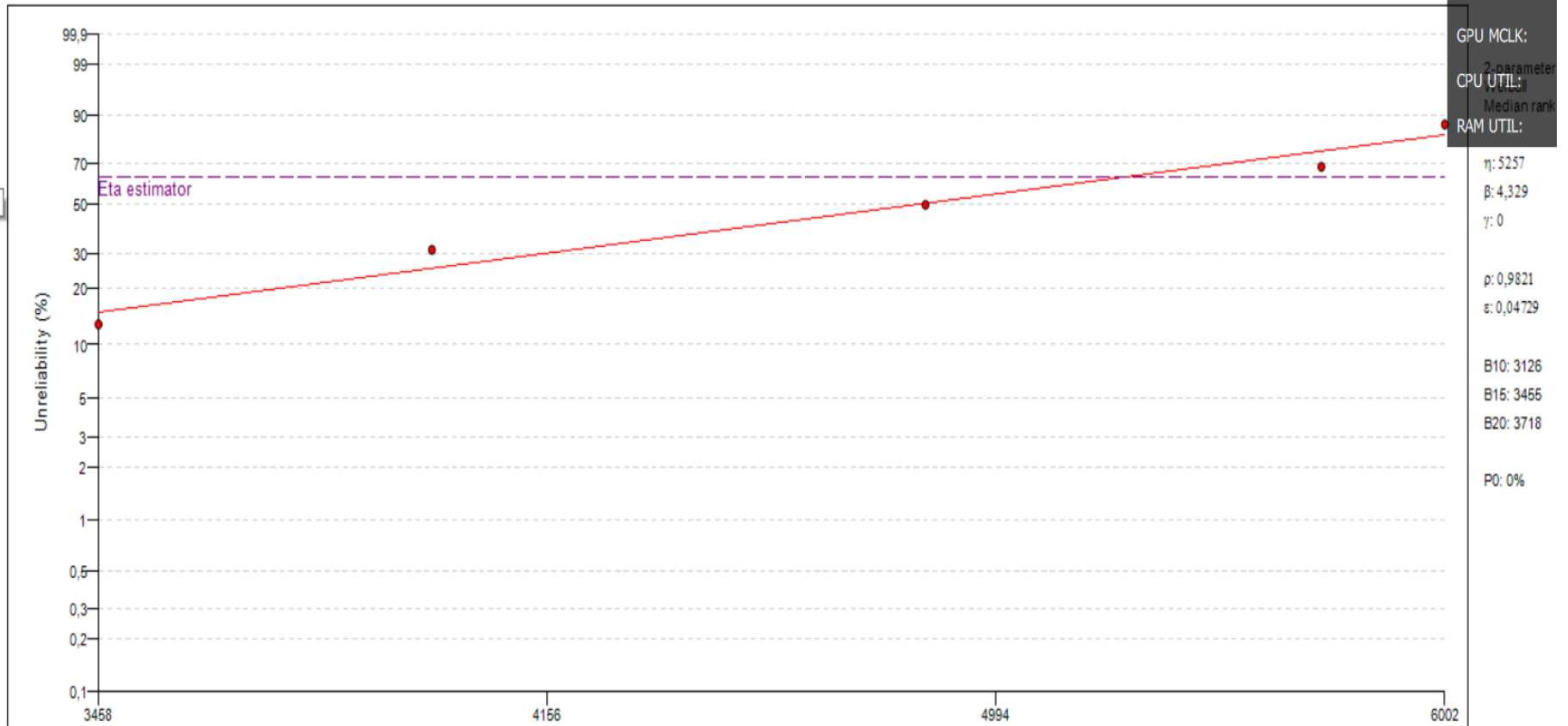


Lampiran 2 parameter feed pump 2
feed pump 2 Cumulative Probability

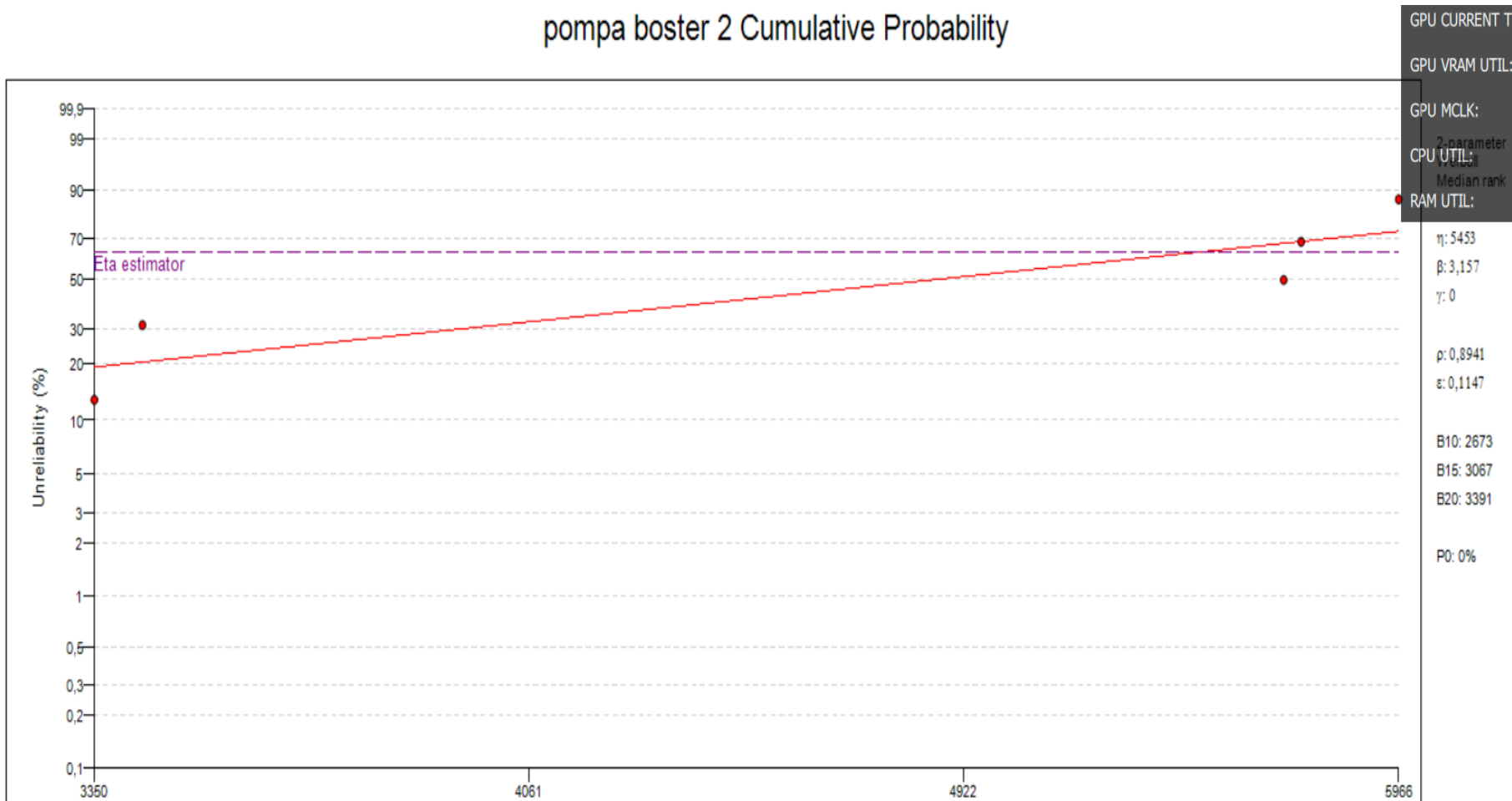


Lampiran 3 parameter feed pump 1

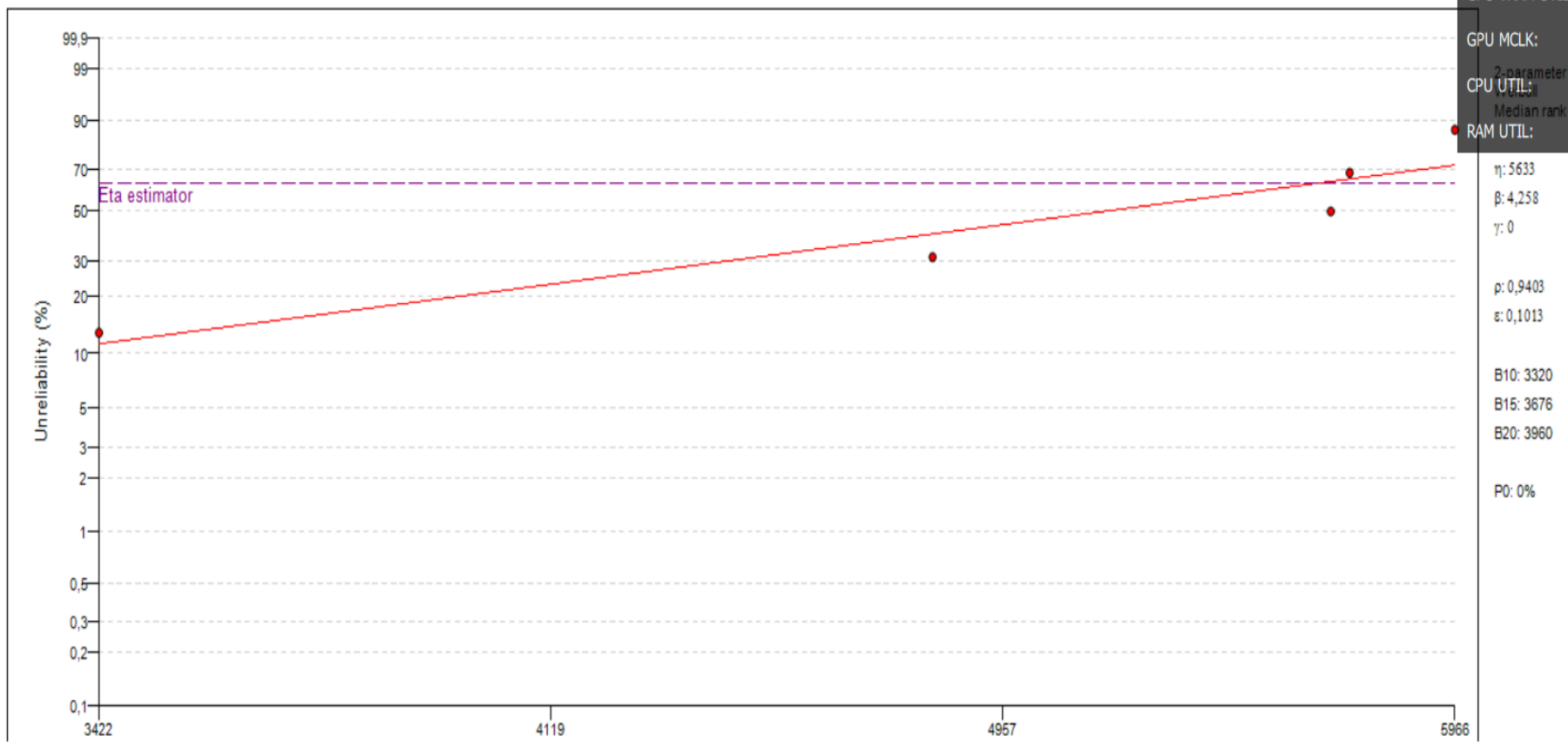
feedpump 1 Cumulative Probability



Lampiran 4 parameter boster 2
pompa boster 2 Cumulative Probability

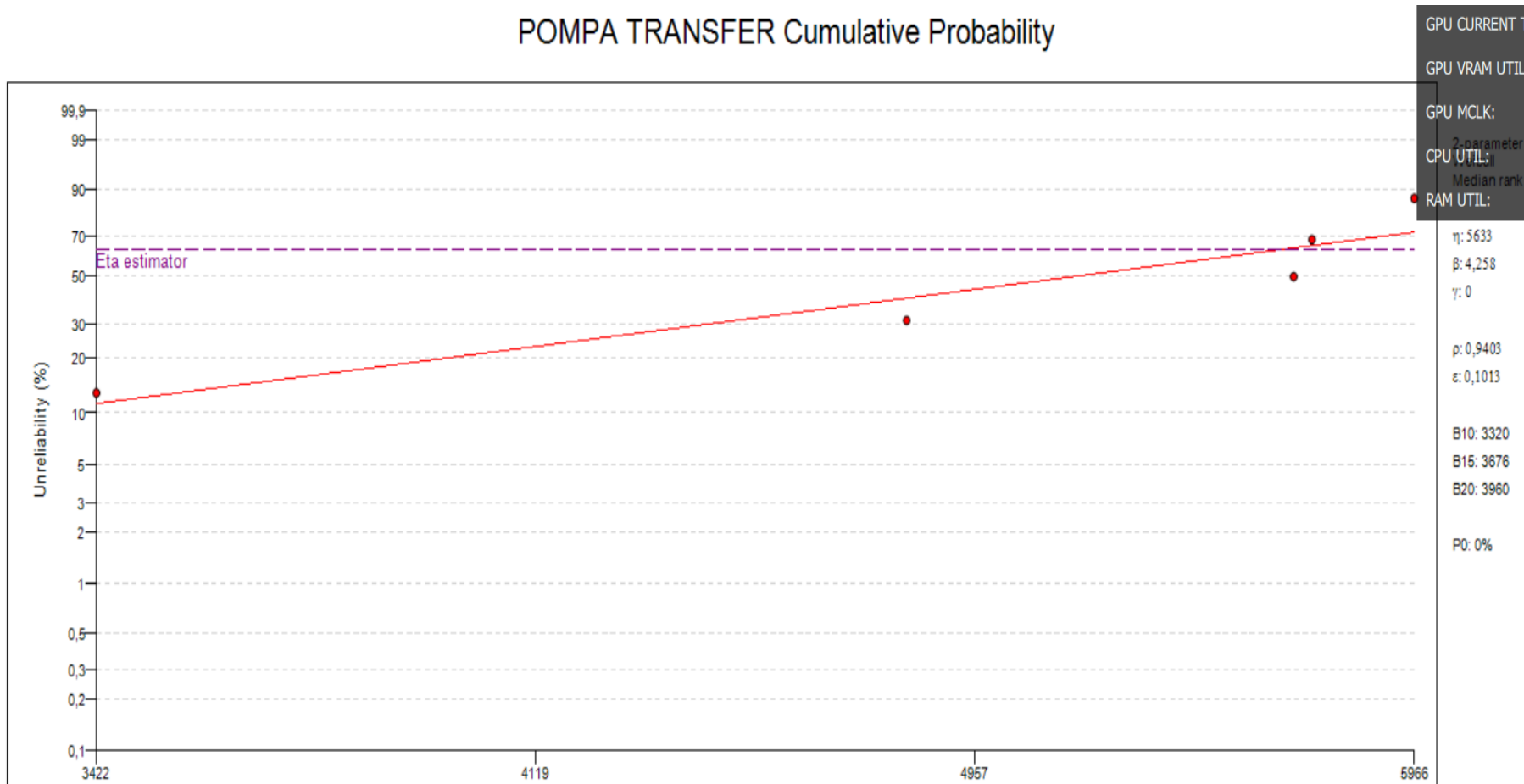


Lampiran 5 parameter booster 1
 pompa bosster 1 Cumulative Probability



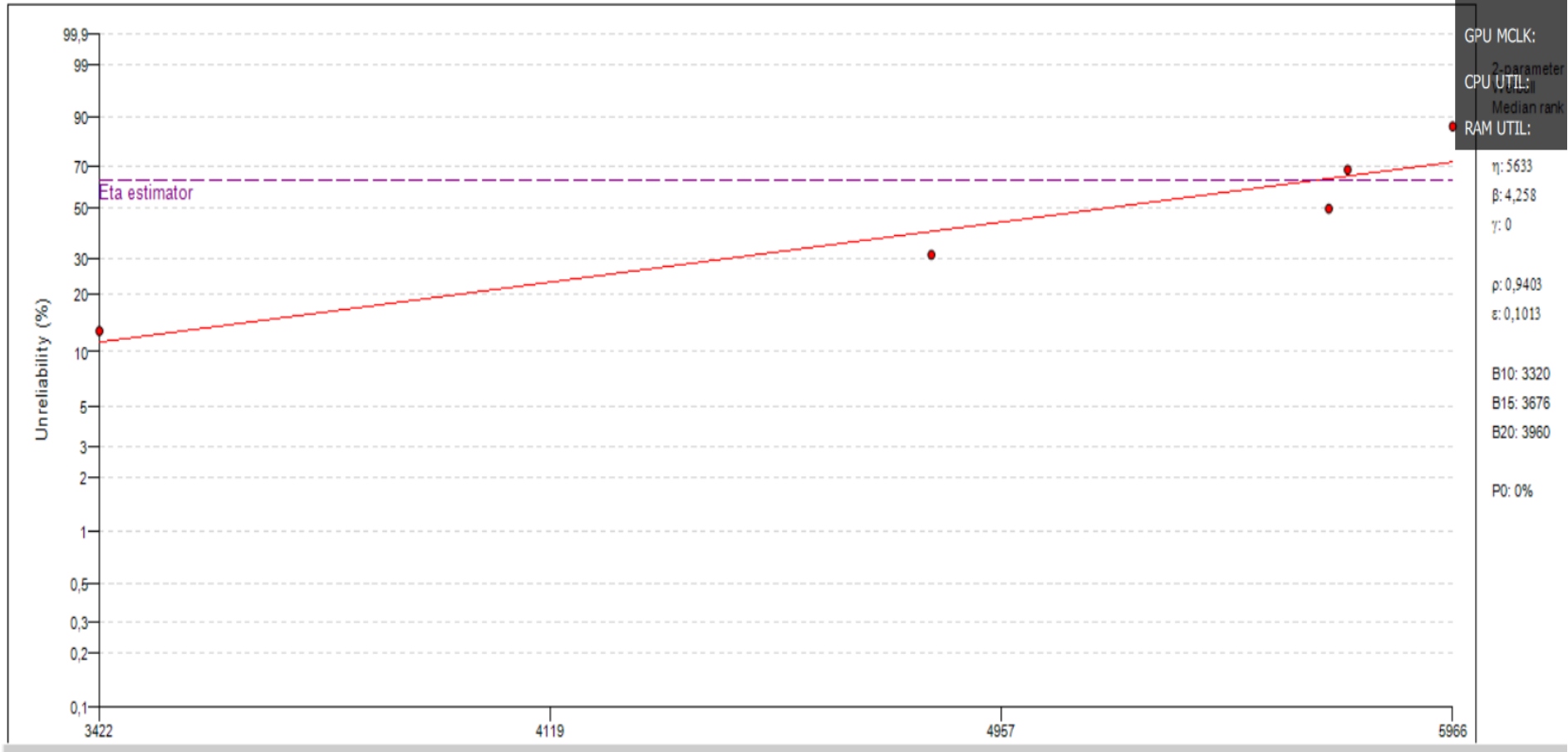
Lampiran 6 parameter transfer 1

POMPA TRANSFER Cumulative Probability



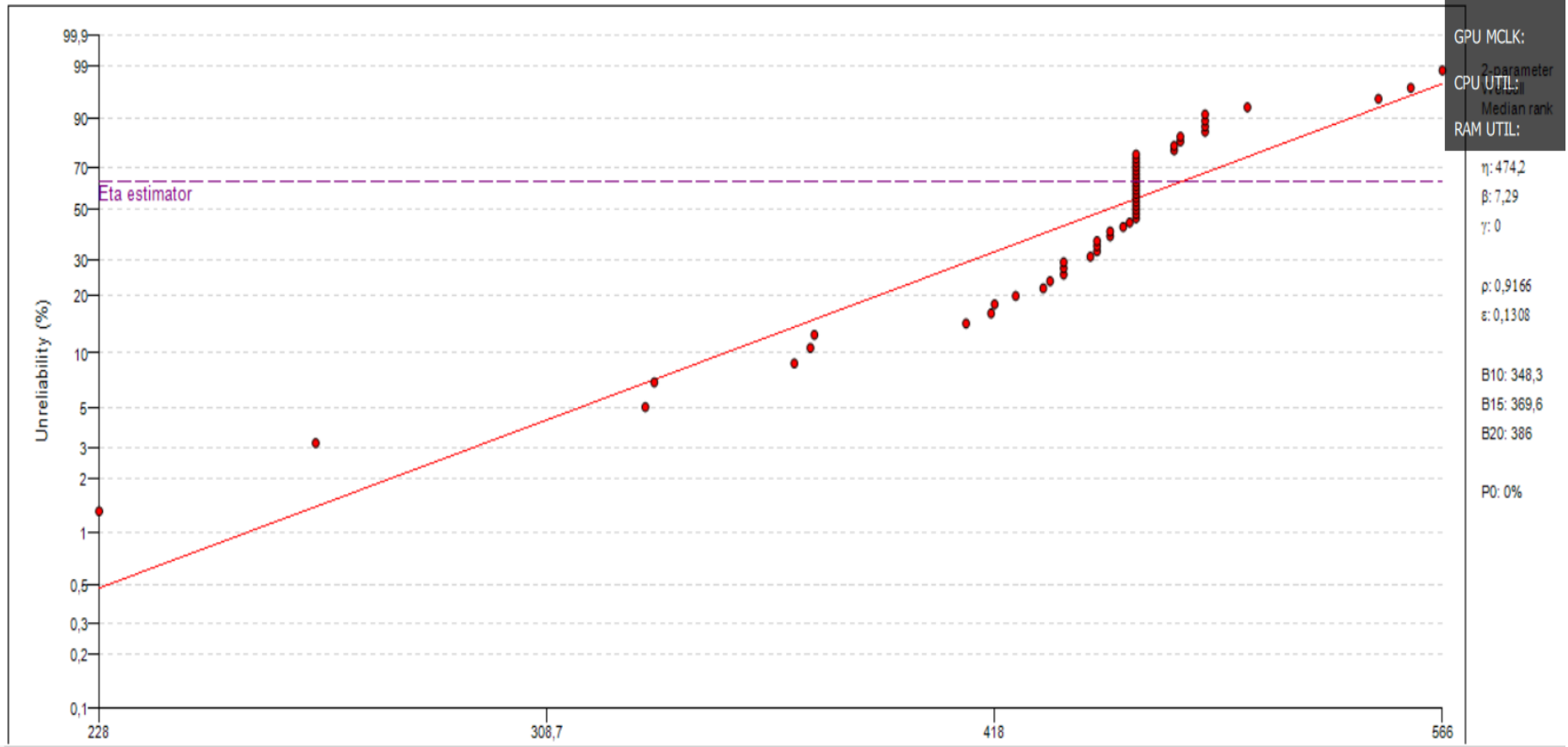
Lampiran 7 parameter transfer 2

pompa transfer 2 Cumulative Probability



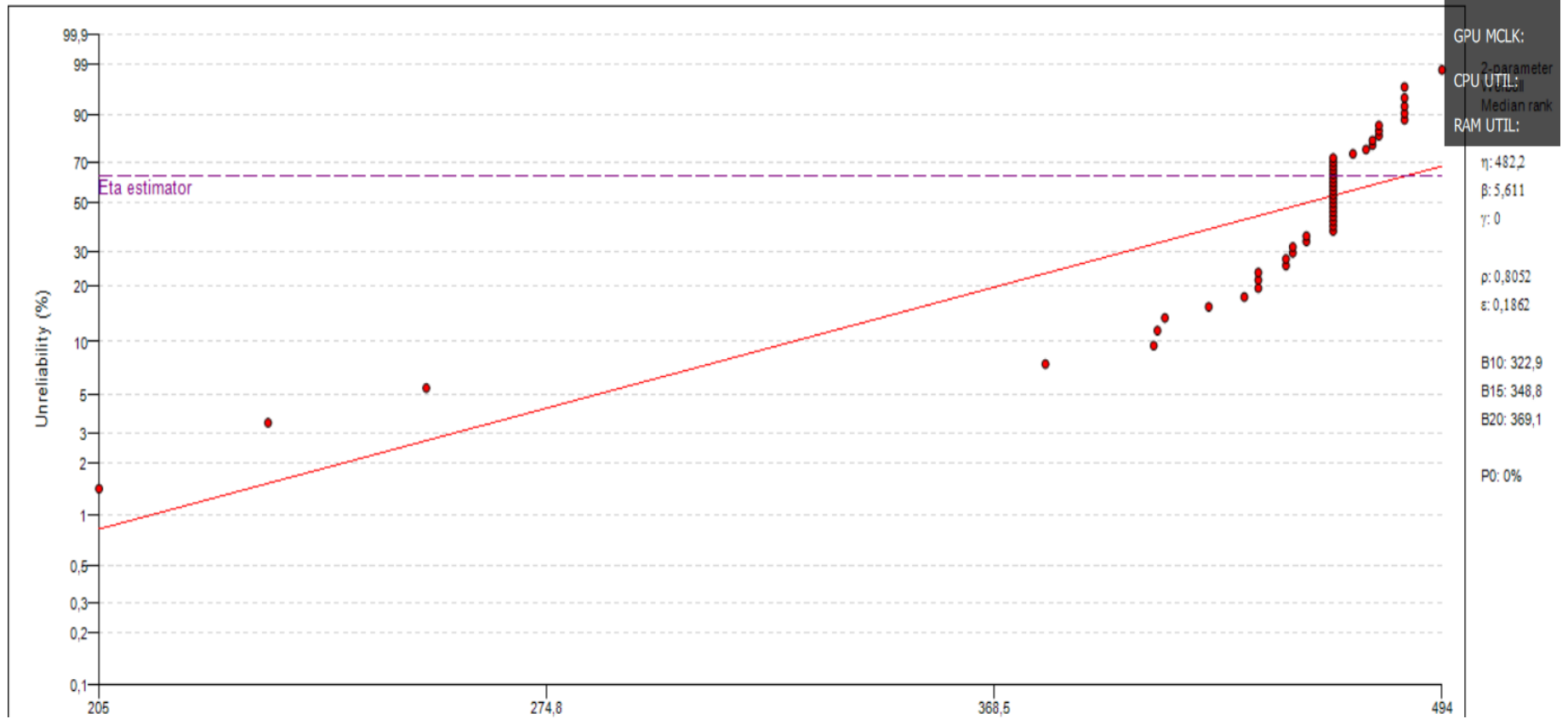
Lampiran 8 parameter purifier 2

purifier 2 Cumulative Probability



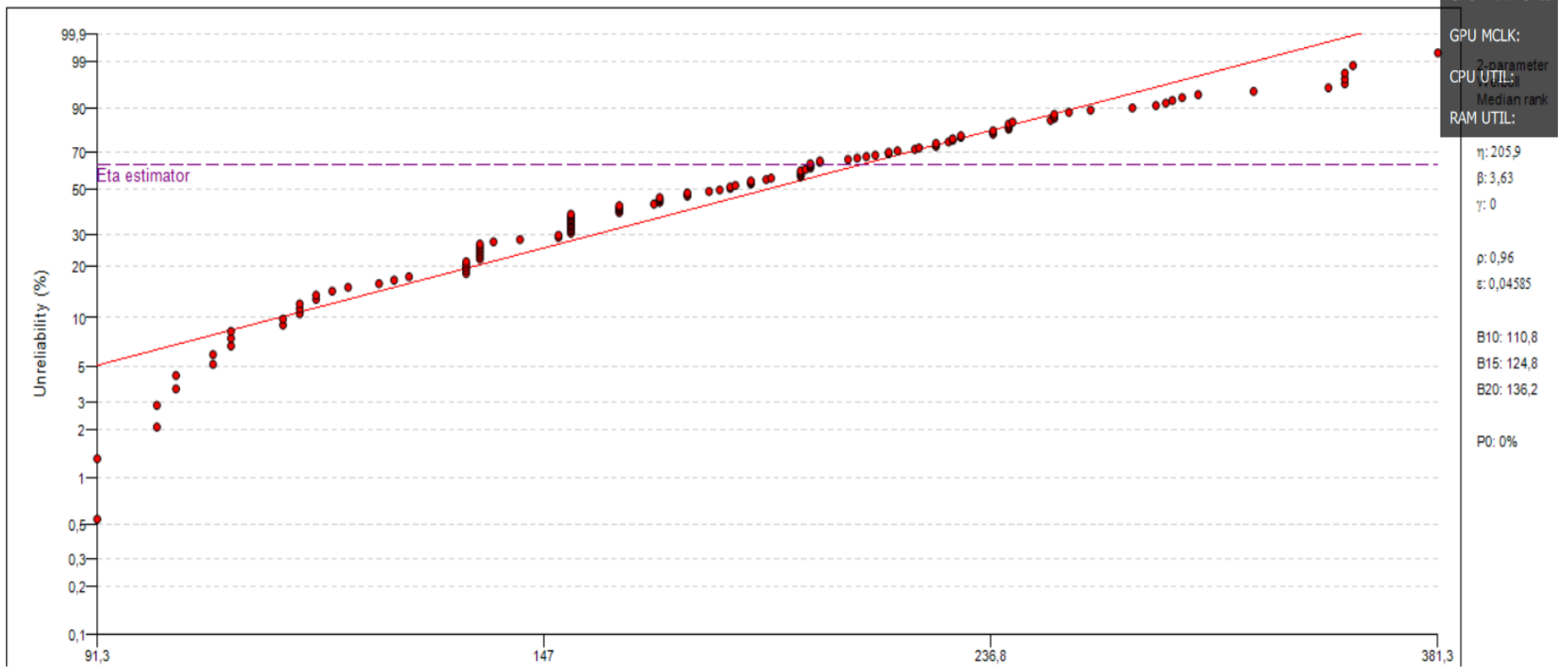
Lampiran 9 parameter purifier 1

purifier 1 Cumulative Probability



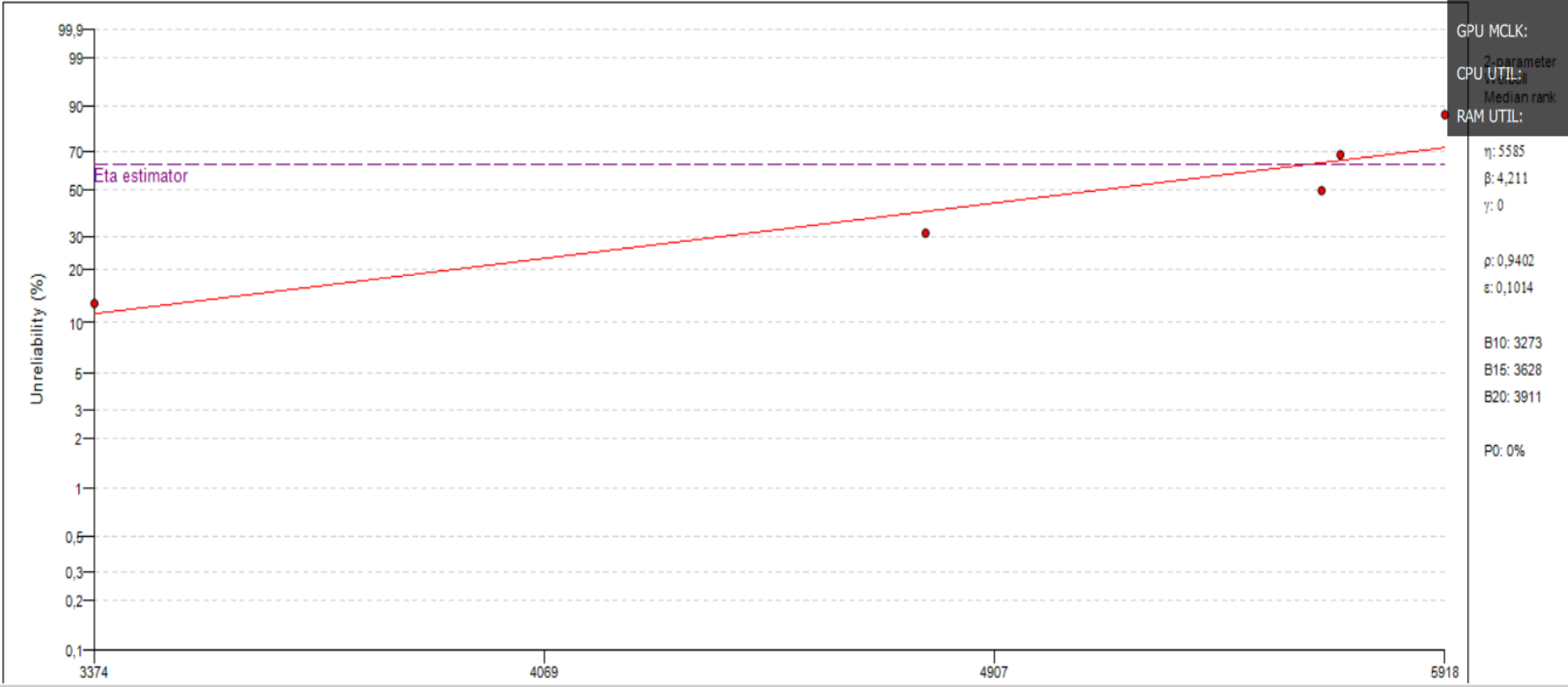
Lampiran 10 parameter strainer

strainer Cumulative Probability



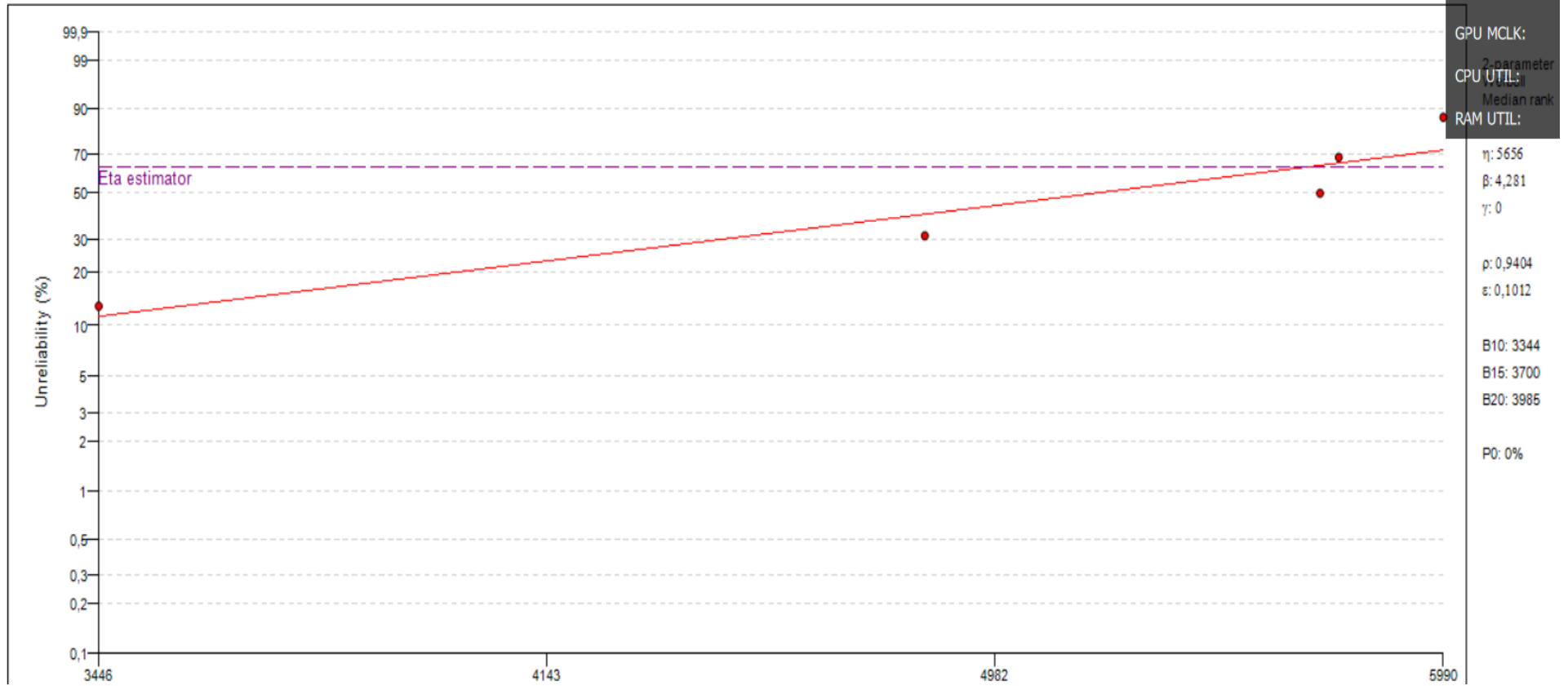
Lampiran 11 parameter tangki harian

tangki harian Cumulative Probability

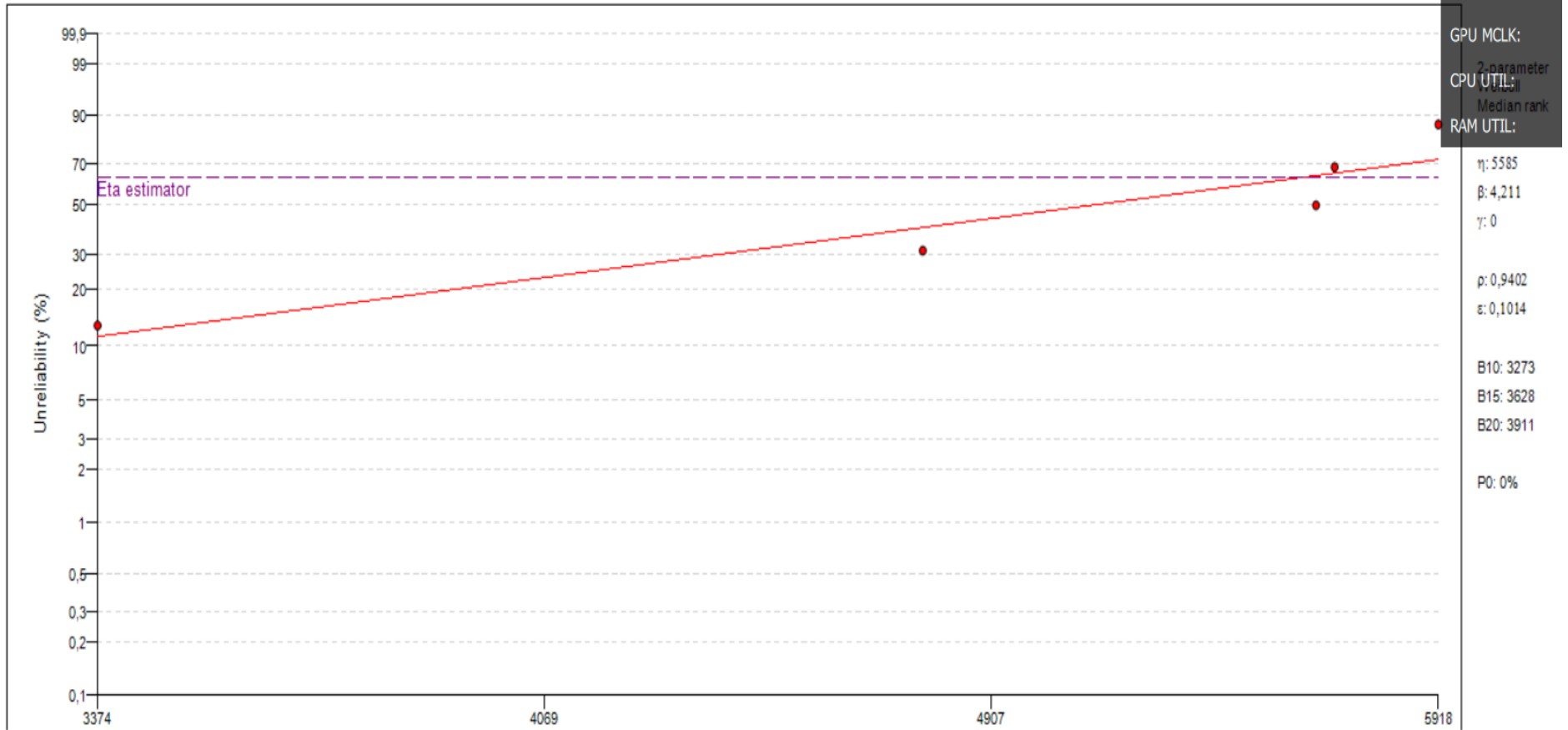


Lampiran 12 parameter tangkiimbang

tangkiimbang Cumulative Probability

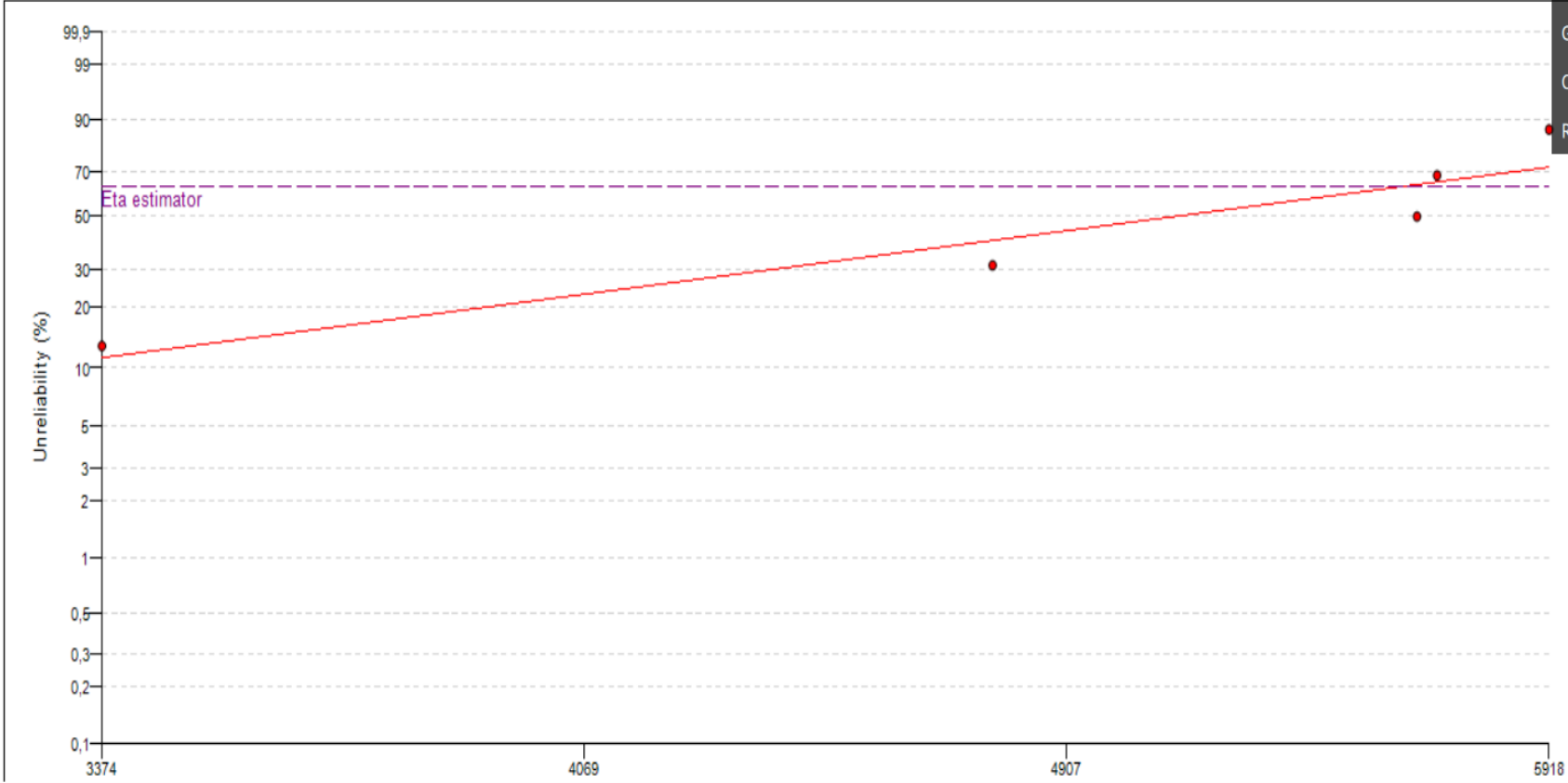


Lampiran 13 parameter tangki pengendapan
tangki pengendapan Cumulative Probability



Lampiran 14 parameter tangki utama

tangki utama Cumulative Probability



GPU CURRENT TE
GPU VRAM UTIL:
GPU MCLK:
2-parameter
CPU UTIL:
Median rank
RAM UTIL:

η : 5585
 β : 4,211
 γ : 0
 p : 0,9402
 e : 0,1014
B10: 3273
B15: 3628
B20: 3911
P0: 0%

Lampiran 15 filter duplex



Lampiran 16 purifier



Lampiran 17 pompa transfer



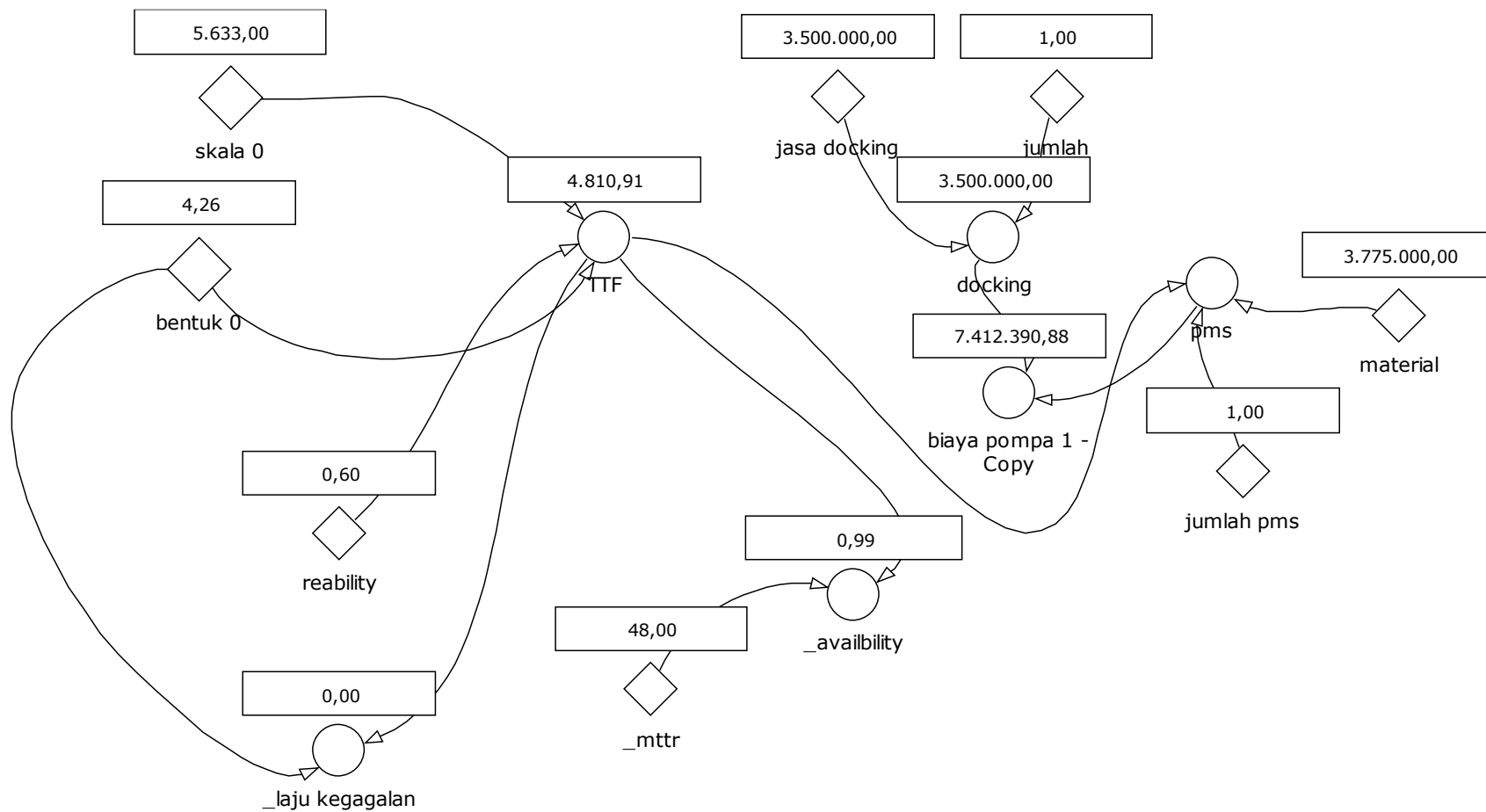
Lampiran 18 strainer



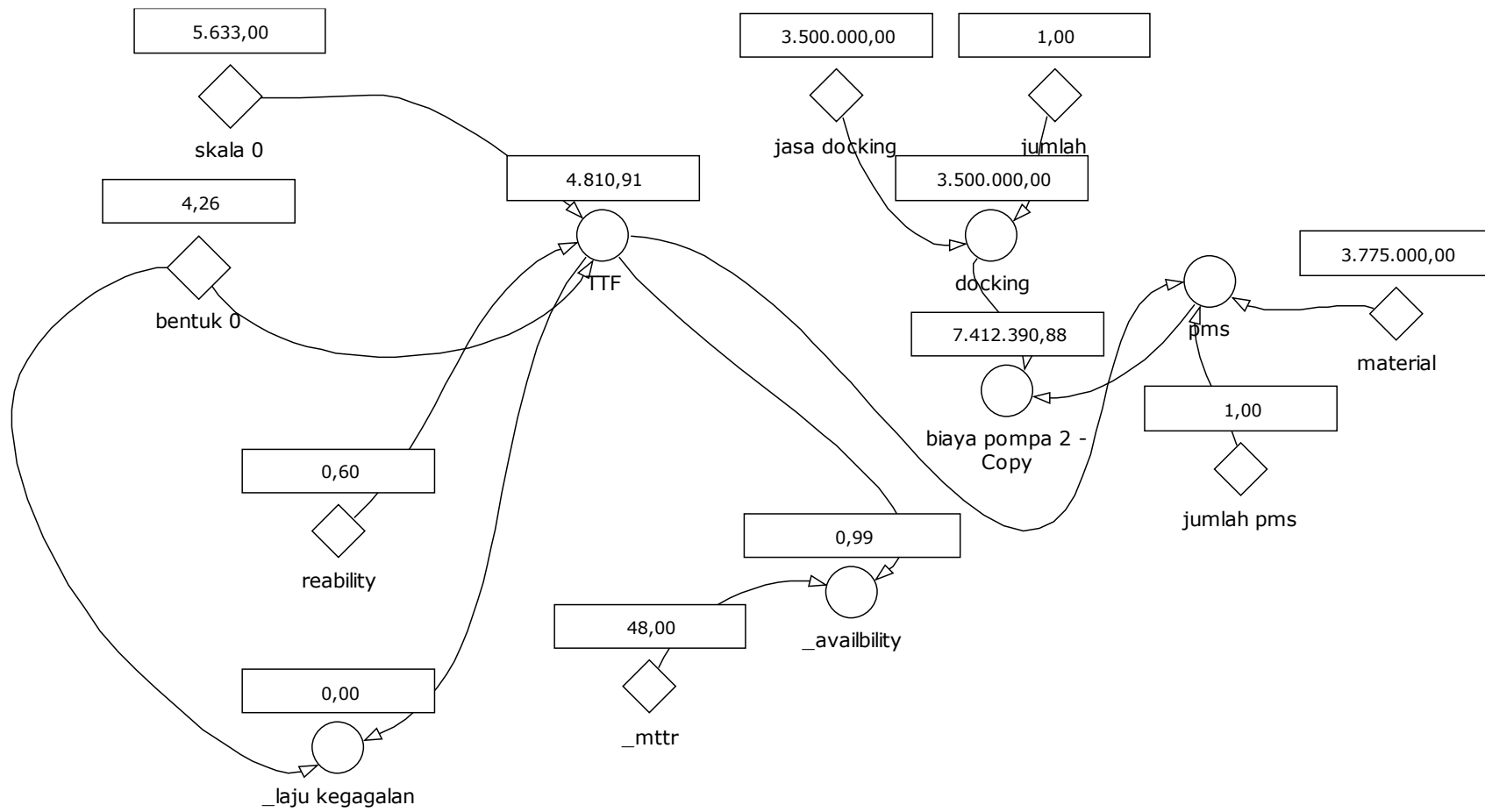
Lampiran 19 tangkiimbang



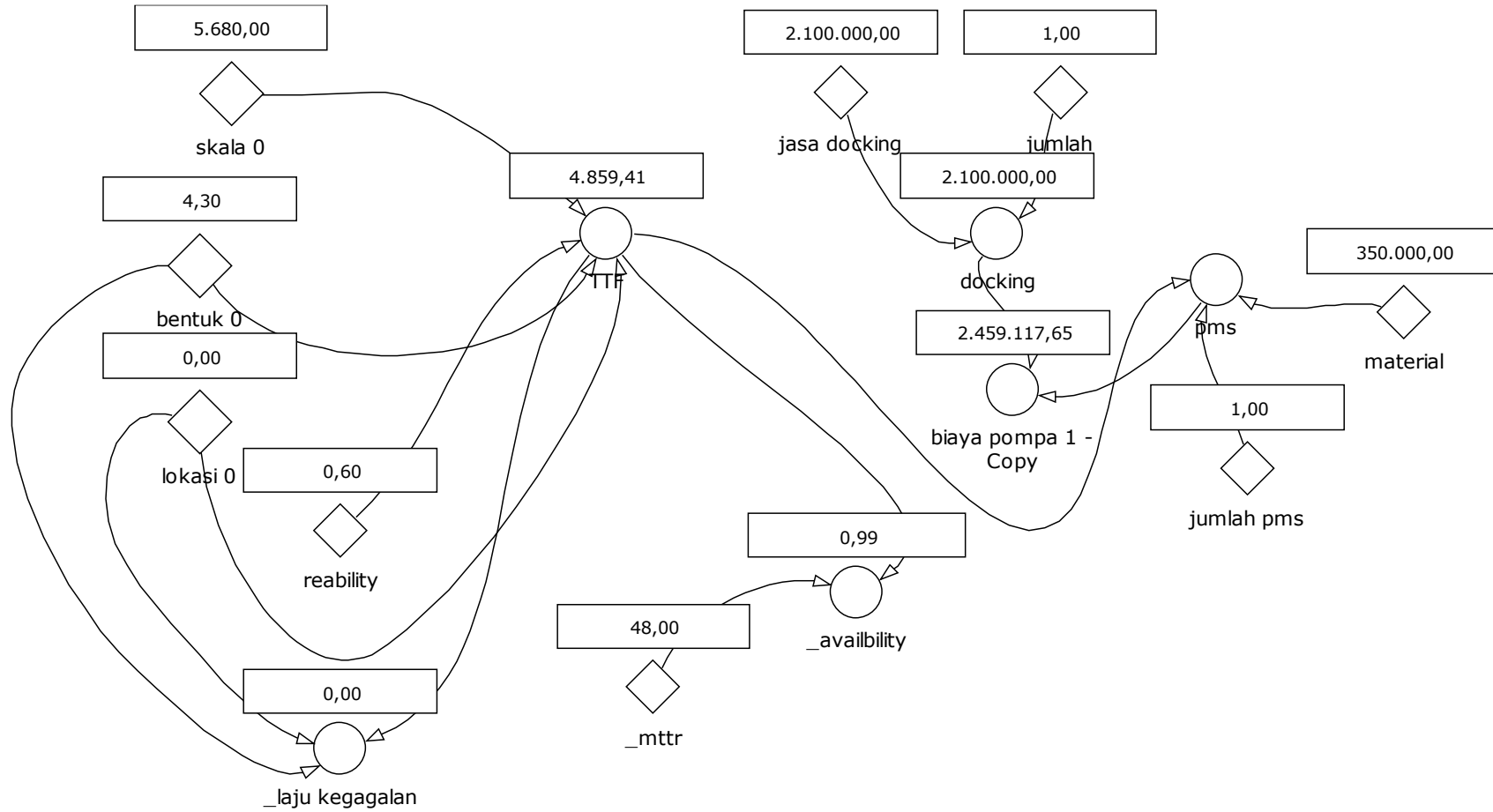
Lampiran 20 model dinamika pompa transfer 1



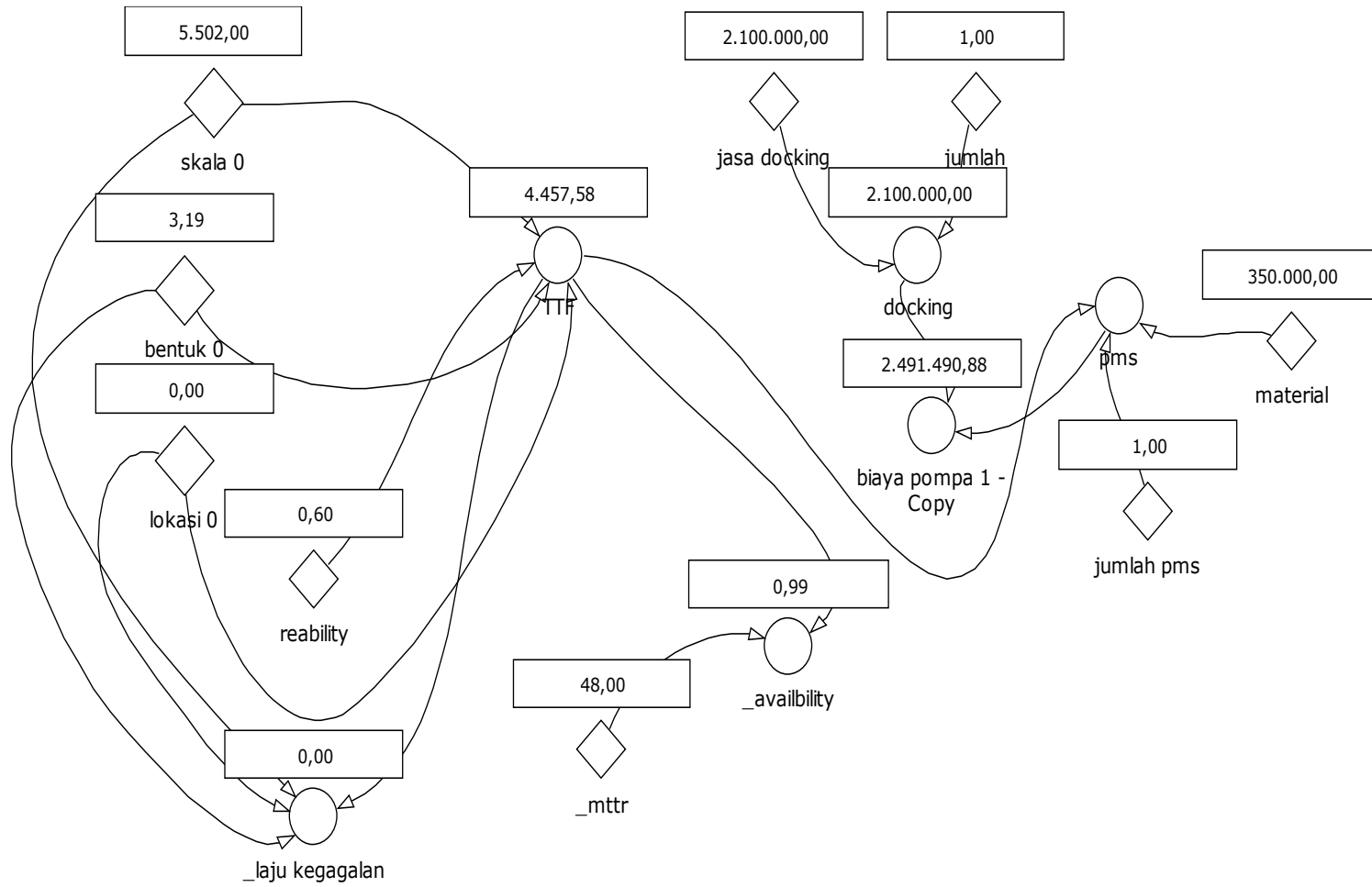
Lampiran 21 model dinamika pompa transfer 2



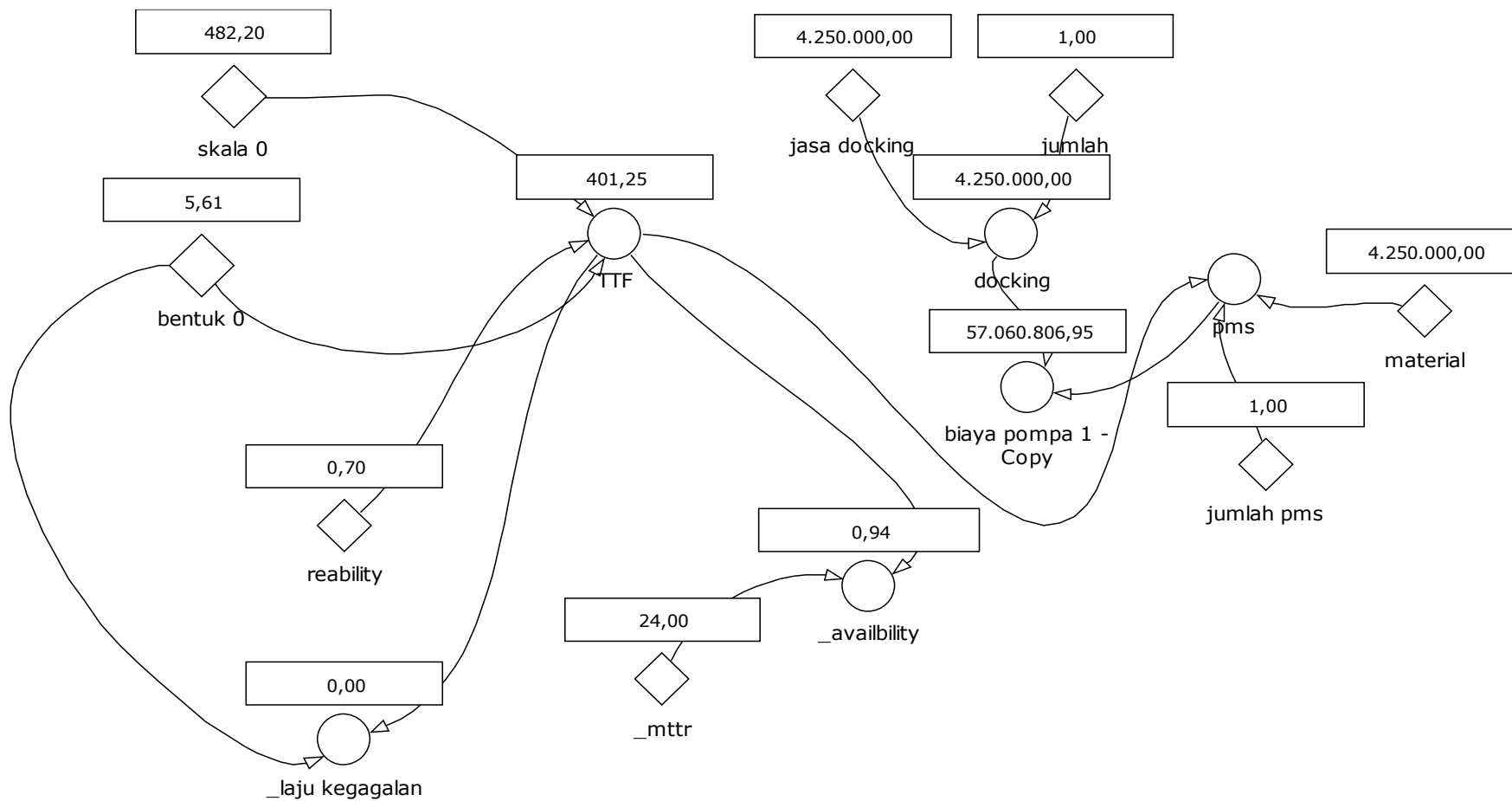
Lampiran 22 model dinamika pompa bosster 1



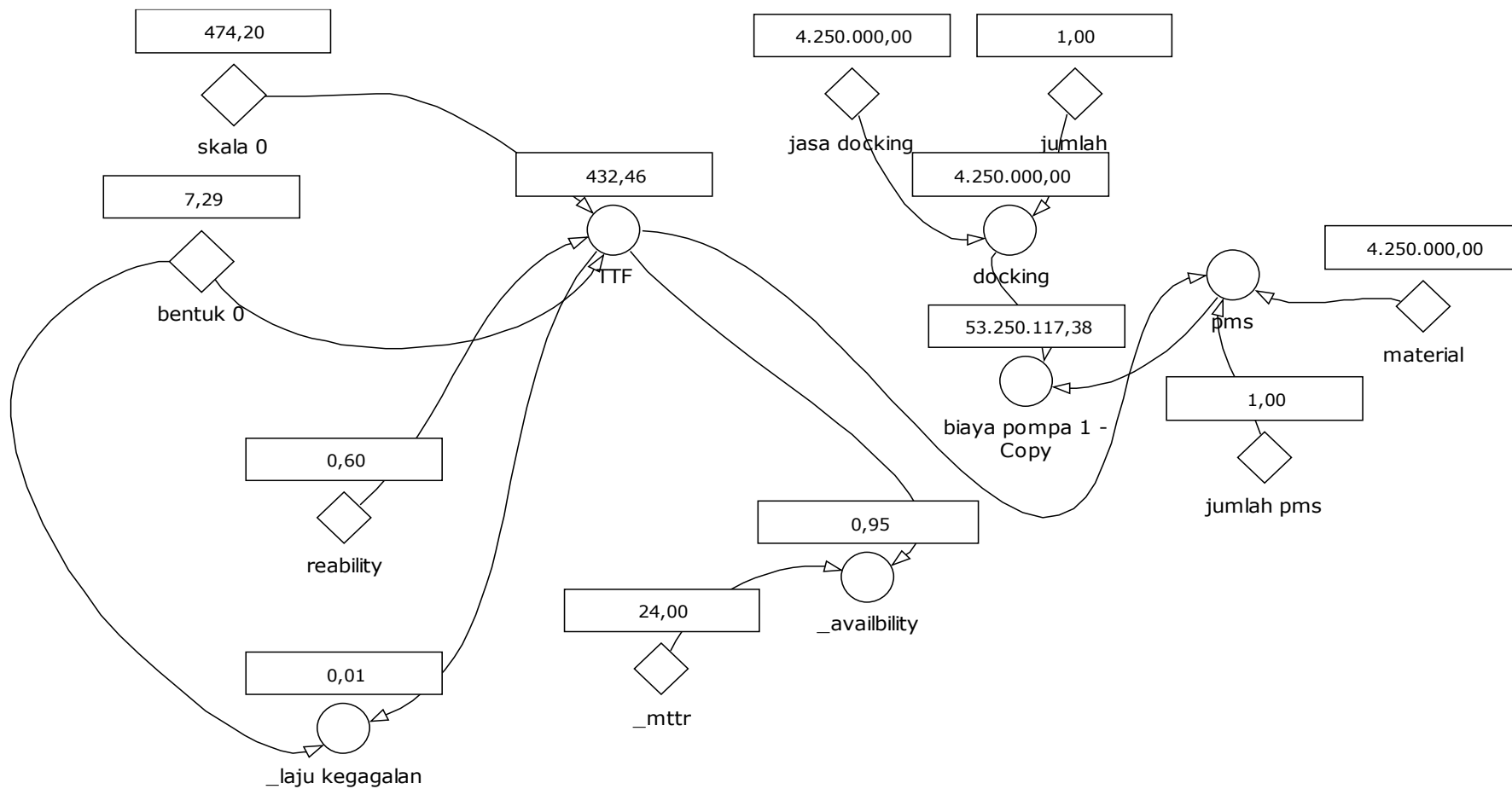
Lampiran 23 model dinamika pompa bosster 2



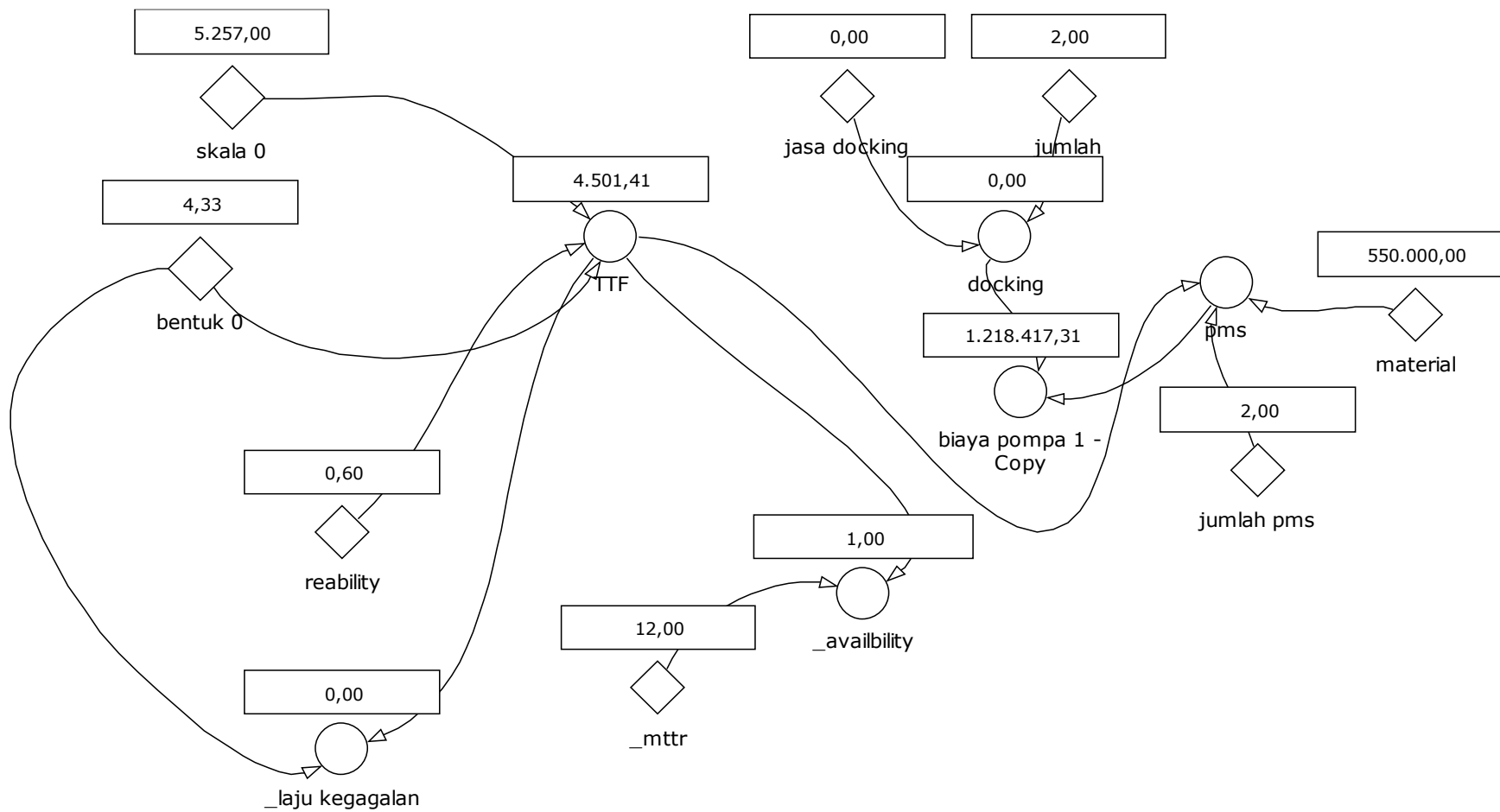
Lampiran 24 model dinamika purifier 1



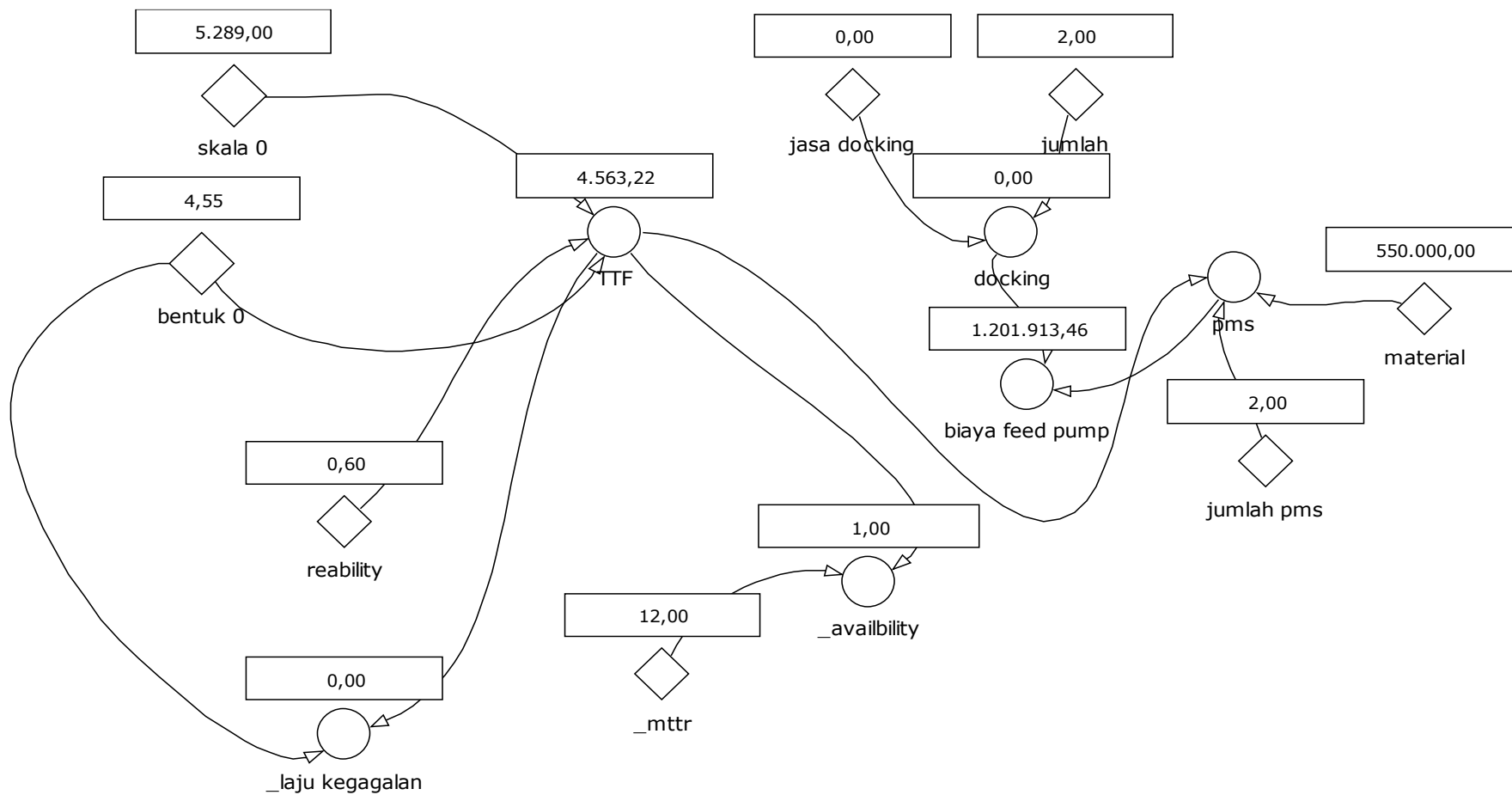
Lampiran 25 model dinamika purifier 2



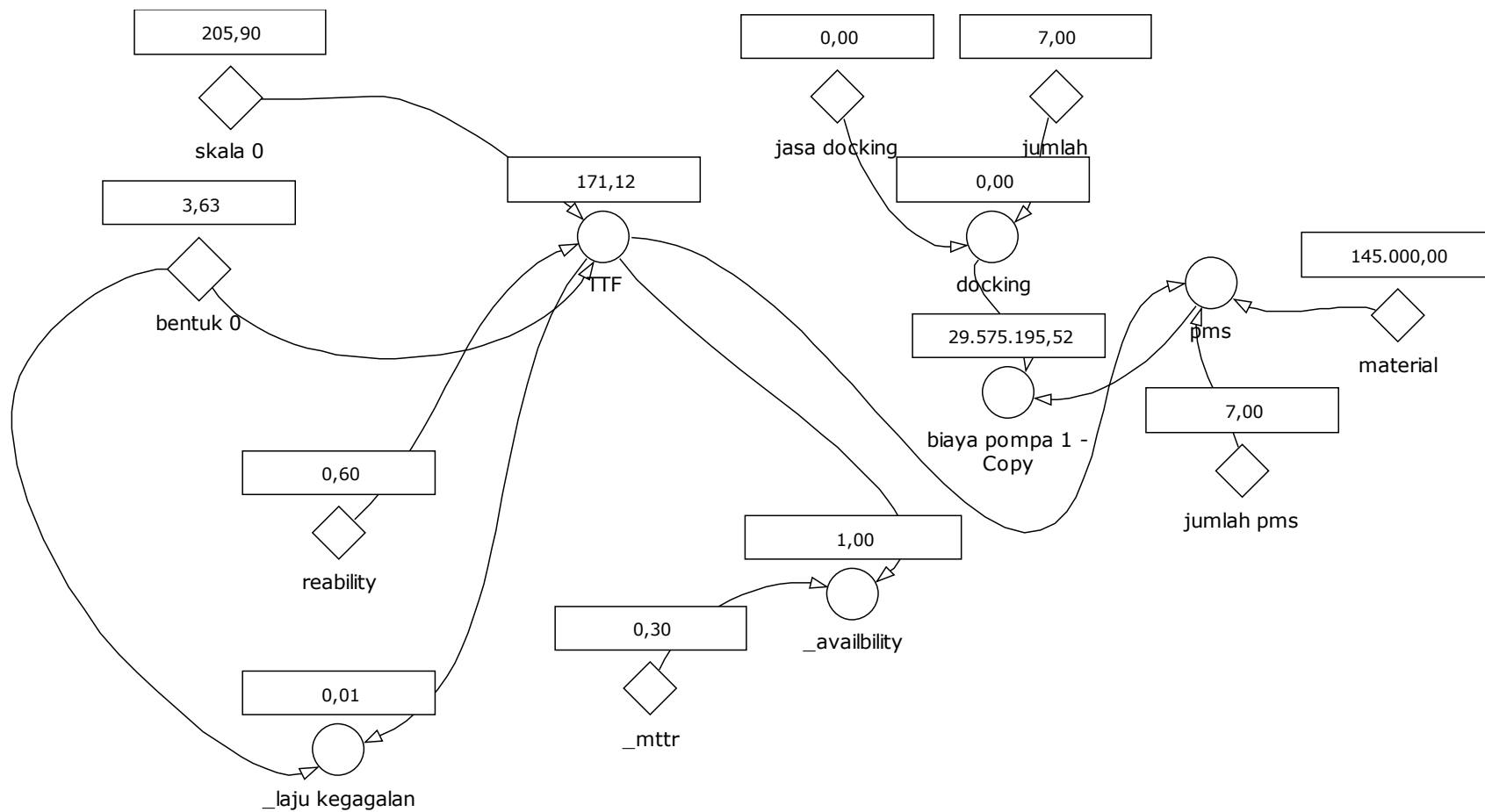
Lampiran 26 model dinamika feed pump 1



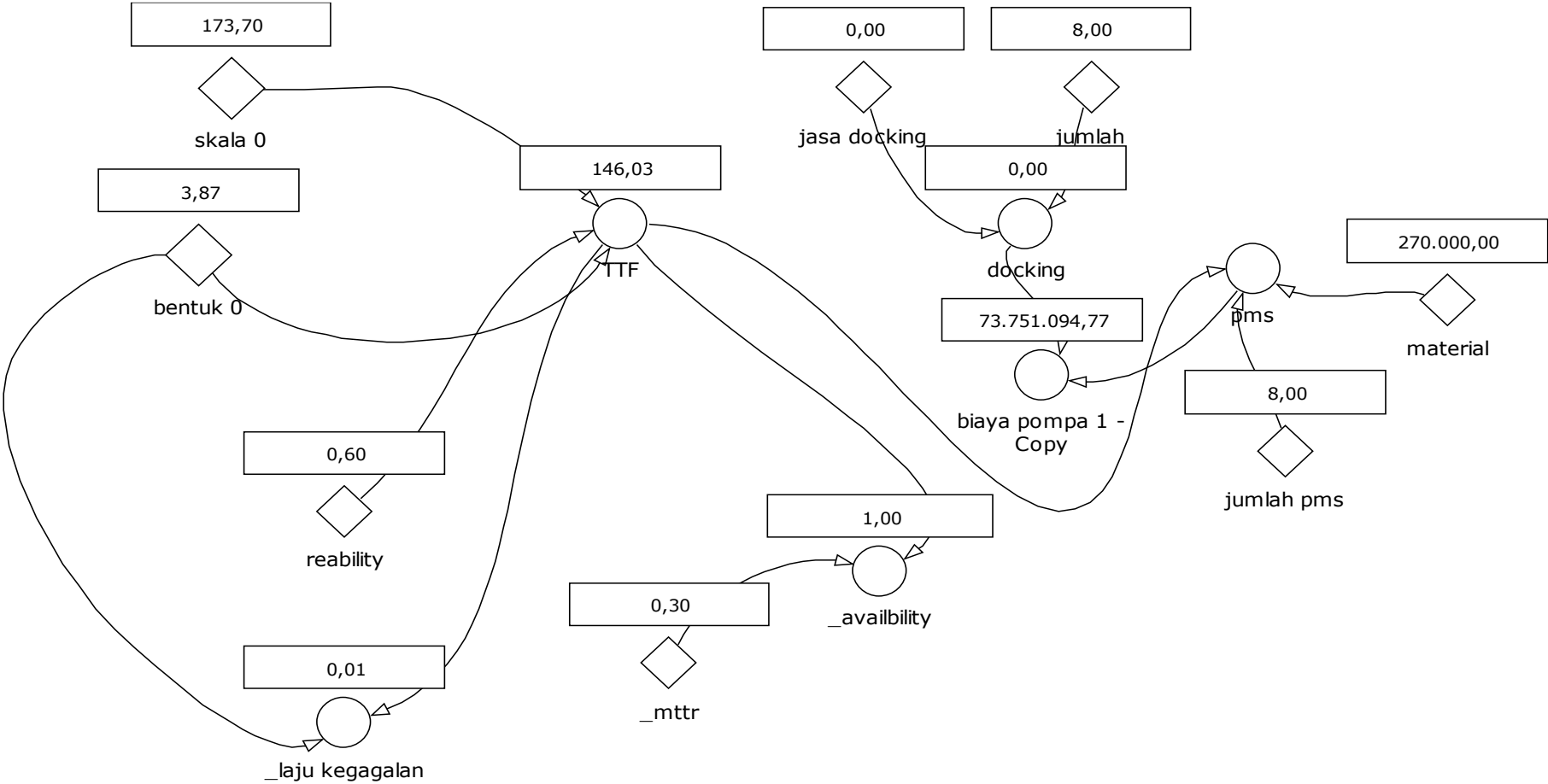
Lampiran 27 model dinamika feed pump 2



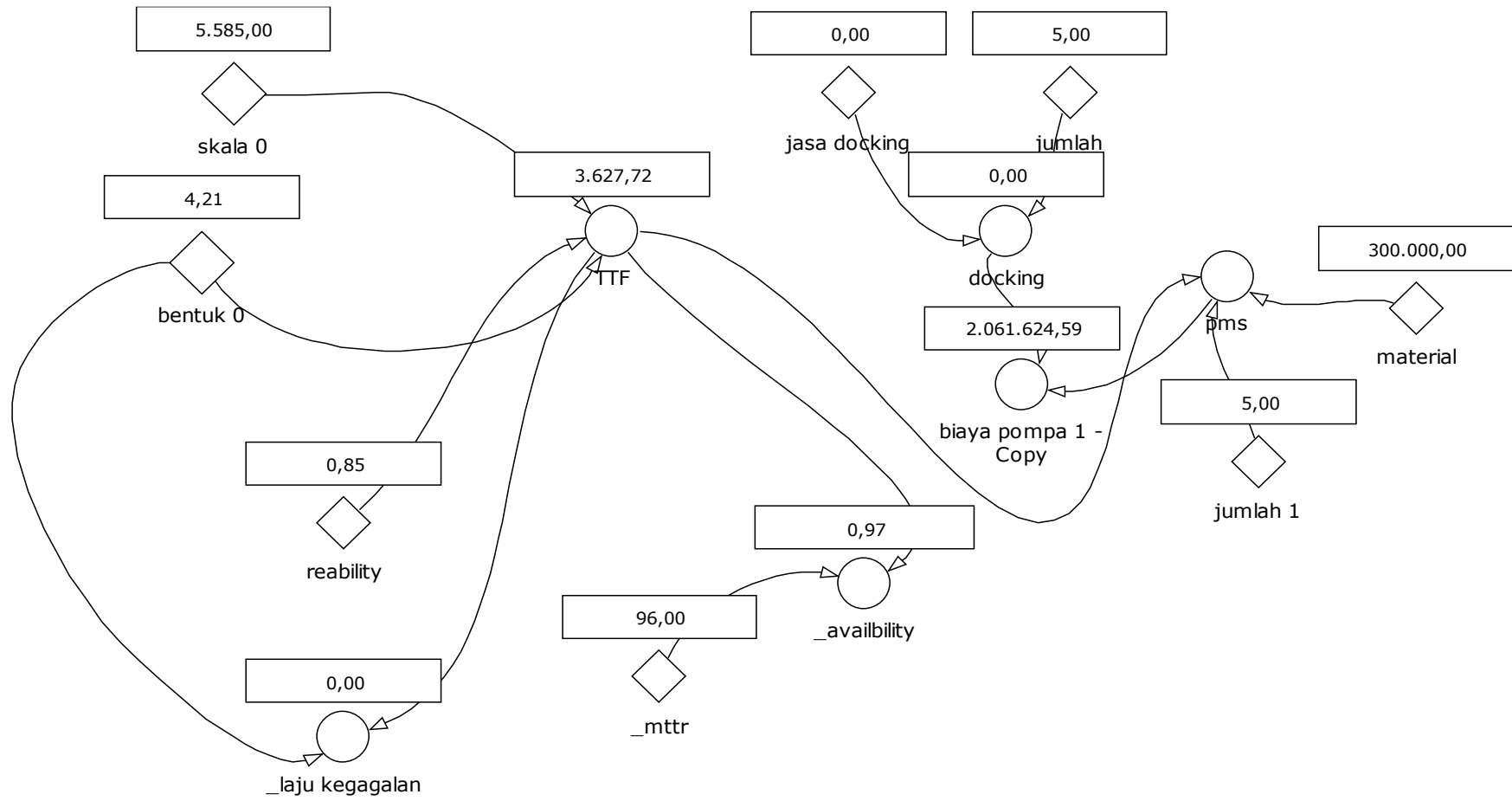
Lampiran 28 model dinamika strainer



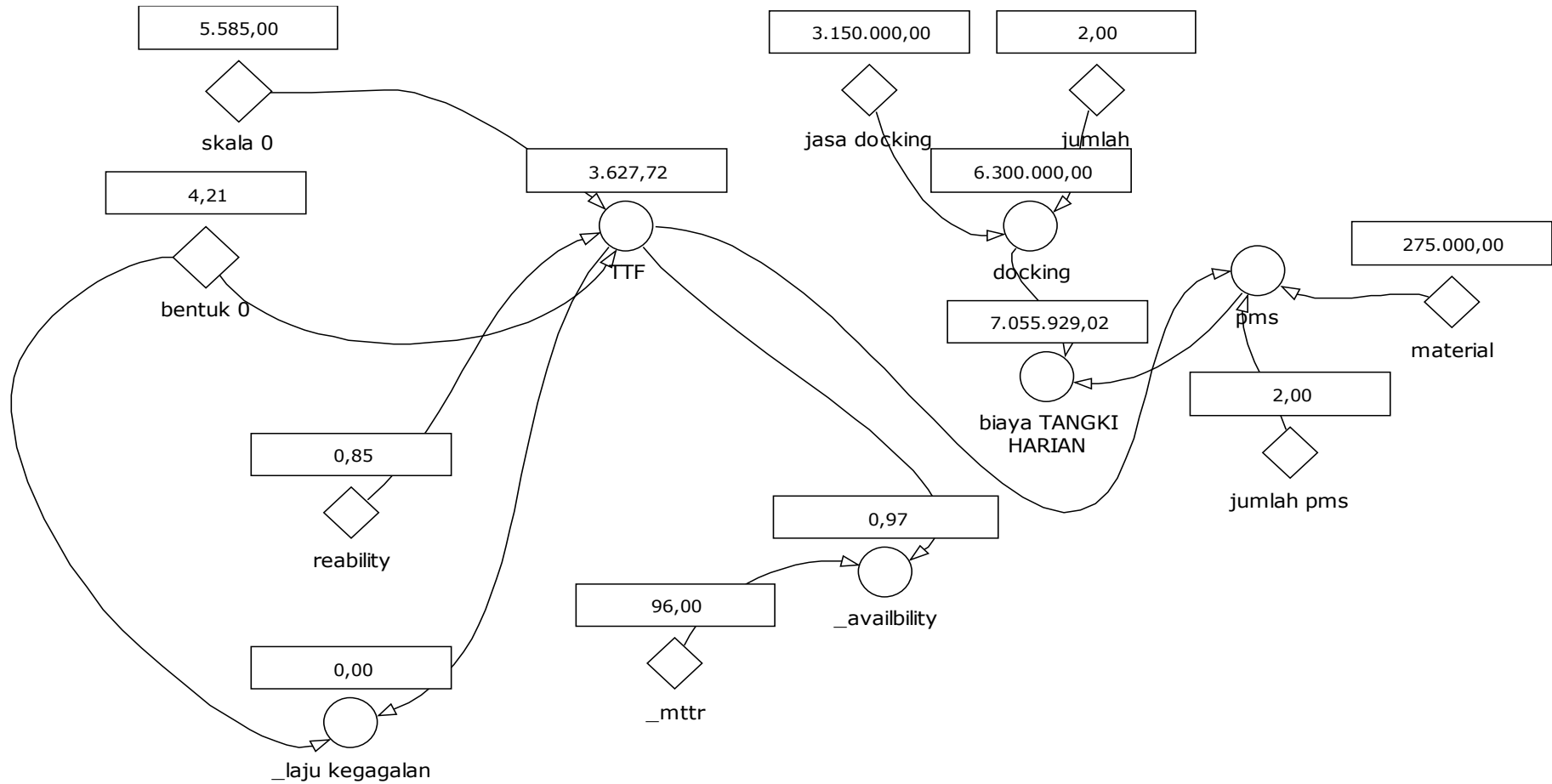
Lampiran 29 model dinamika duplex



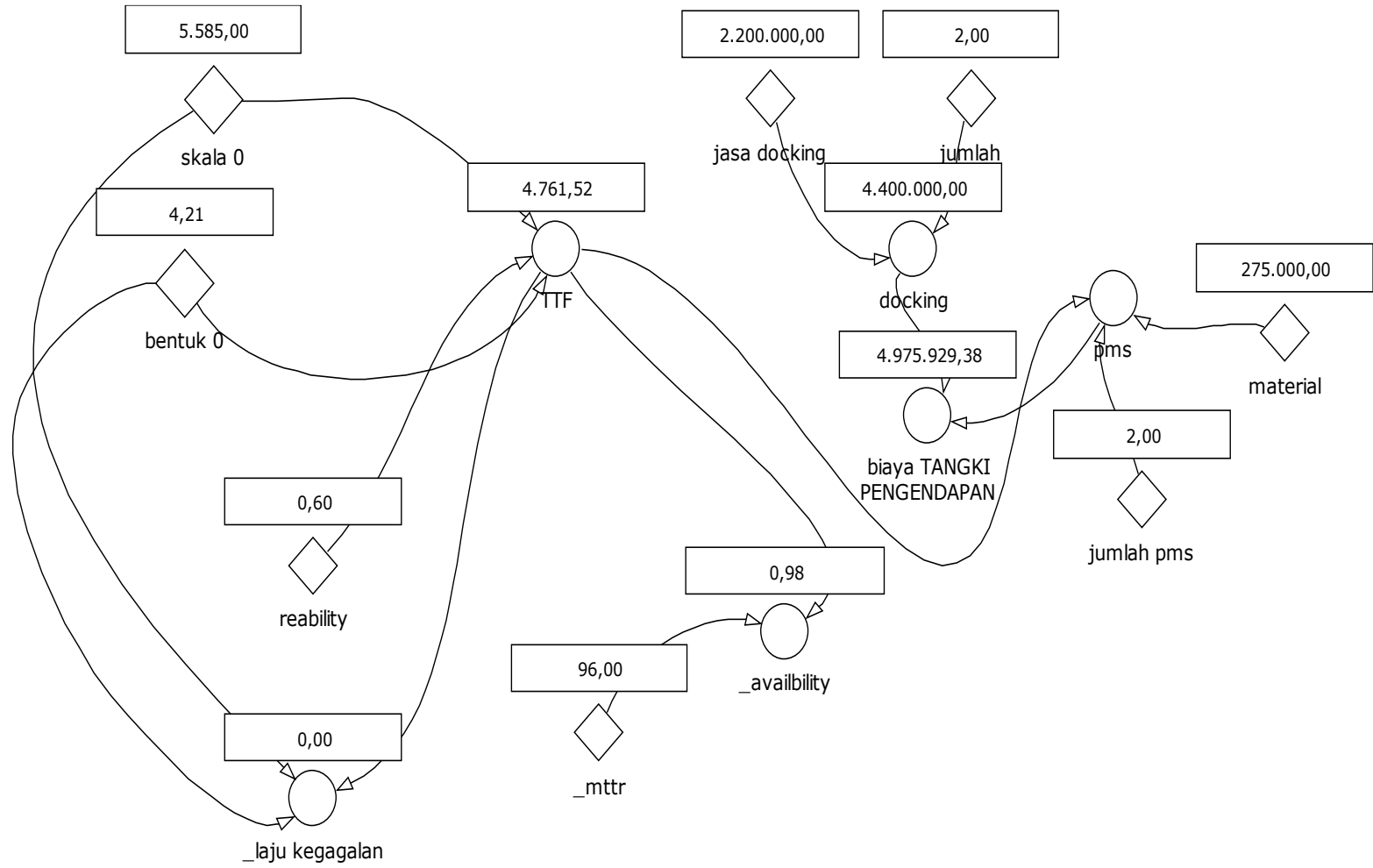
Lampiran 30 model dinamika tangki utama



Lampiran 31 model dinamika tangki harian



Lampiran 32 model dinamika tangki pengendapan



Lampiran 33 model dinamika tangkiimbang

