

DAFTAR PUSTAKA

- Aksakalli S, Ileri Z & Karacam N 2013, 'Effect of pine bar extract on bond strength of brackets bonded to bleached human tooth enamel', *Acta odontologica Scandinavica*, Vol. 71, hh. 1555-1559
- Anil M, Ponnappa KC, Nitin M, Ramesh S, Sharanappa K, Nishant A 2015, " Effect of 10% sodium ascorbate on shear bond strength of bleached teeth- an in vitro study", *J Clin Diagn Res*, Vol 9(7)
- Arwidasari AR, Cevanti TA, Soewondo IK 2019, 'Effectiveness of sargassum sp ethanolic extract on traumatic ulcers healing in the labial mucosa of wistar strain (Rattus norvegicus)', *Padjadjaran Journal Of Dentistry*, Vol 31, hh 73-78
- Budhiyanti SA, Raharjo S, Marseno DW & Lelana IYB 2012, 'Antioxidant activity of brown algae Sargassum species extract from the coastline of Java Island, *American Journal of Agriculture and Biological Science*, Vol. 7(3), hh. 337-346
- Banjarnahor SDS & Artanti N 2014, 'Antioxidant properties of flavonoids', *Med J Indonesia*, Vol. 23, no.4.
- Barutcigil C, Barutcigil K, Ozarslan MM, Dundar A & Yilmaz B 2017, 'Color of bulk-fill composite resin restorative material', *J Esthet Restor Dent*, Vol. 30, no.2, hh.3-8.
- Briso 2014, Effect of Sodium Ascorbate on Dentin Bonding After Two Bleaching Techniques

- Butt G, Hussain E, Rehman A 2013, 'Comparative analysis of antioxidant potential of sargassum sp and lyengaria sp" *Pakistan Journal of Medical and Health Science*, Vol 7, no 4.
- Cavalli V, de Carvalho RM, Giannini M 2005, 'Influence of carbamide peroxide-based bleaching agents on the bond strength of resin-enamel/dentin interfaces. *Braz Oral Res* 19:23-29
- Cunha LG, Alonso RCB & Sinhoreti MAC 2004, 'Effect of curing methods and based materials on the stress generated by the polymerization shrinkage of a resin composite', *Brazilian Dental Journal*, Vol. 3, hh. 609-614.
- Cheng YL, Musonda J, Cheng H, Attin T, Zheng M, Yu H 2019, 'Effect of surface removal following bleaching on the bond strength of enamel' *BMC Oral Health*, No.50
- Dianty F, Sukartini E & Armilia M 2011, 'Bleaching internal untuk merawat perubahan warna gigi insisivus sentralis kanan atas (Laporan Kasus) Internal bleaching as a treatment to color-changed of right upper centralis canine (case report)', *J Dentomaxillofacial Sci*, Vol.10, no.2, hh. 101.
- Dahl JE & Pallesen U 2014, 'Tooth bleaching – a critical review of the biological aspects', *Crit Rev Oral Biol M*, Vol. 14., no.4, hh. 292- 304
- Diaz, A.R.T., A. Cabello-Pasini, E. Perez-Rodriguez, R.M.C. Alvarez and F.L. Figueroa, 2006. Daily and seasonal variations of optimum quantum yield and

- phenolic compounds in *Cystoseira tamariscifolia* (Phaeophyta). *Mar. Biol.*, 148: 459-465.
- Fauziah F 2017, 'Pertumbuhan sargassum sp. pada tipe habitat dan berat koloni berbeda di pantai sakera bintang.
- Fitzmaurice SD, Sivamani RK, Isseroff RR 2011, Antioxidant therapies for wound healing: clinical guide to currently commercially available product, *Skin Pharmacol Physiol*, Vol 24, hh 113-126
- Gokce B, Comlekoglu ME, Ozpinar B, Turkun M & Kaya AD 2008, 'Effect antioxidant treatment on bond strength of a luting resin to bleached enamel', *Journal of Dentistry*, Vol. 36, hh. 760-765
- Garcia EJ, Reis A, Serrano & Grande M, 2012, 'Immediate bonding to bleached enamel treated with 10 AM % sodium ascorbate gel: a case report with one-year follow-up', *European Journal of Esthetic dentistry*, Vol. 7, no. 2.
- Greenwall L 2001, '*Bleaching techniques in restorative dentistry*', London, Martin Dunitz Ltd.
- Gazali M, Nurjanah & Zamani NP 2018, 'Eksplorasi Senyawa Bioaktif Alga Cokelat Sargassum Sp. Agardh Sebagai Antioksidan Dari Pesisir Barat Aceh', *JPHPI*, Vol. 21 no.1, hh. 168

- Grevo S, Gerung1 , Calvyn F.A. Sondak1 , Billy Th Wagey1 , Medy Ompi1, Khristin I.F & Kondoy 2017, 'Morfologi sargassum sp di kepulauan raja ampat, papua barat (Morphology of Sargassum sp on Raja Ampat Archipelago, West Papua), *Jurnal Pesisir dan Laut Tropis*, Vol. 1 no. 1.
- Hargreaves KM & Berman LH 2016, '*Cohen's pathways of the pulp*', 11th Ed, Elsevier, St Louis, Missouri.
- Hendari R 2009, 'Pemutihan Gigi (Tooth Whitening) Pada Gigi Yang Mengalami Pewarnaan', *Sultan Agung*, Vol XII No. 118 Juni – Agustus, hh.74.
- Hidayati, 2019 Antioxidant Activities, Total Phenolic Compound And Pigment Contents of Tropical Sargassum sp. Extract, Macerated In Different Solvents Polarity', *Jurnla Kelautan Tropis*, Vol. 22, no. 1.
- Hanan K, Mohamed A.Ibrahim 2008, 'Proper timing of bonding composite resin to bleached enamel'. *Cairo Dental Journal*. Vol. 3, hh. 437 : 446.
- Han et al, 2014 Effects of antioxidants on the microleakage of composite resin restorations after external tooth bleaching
- Henry, B.E. and K.L.V. Alslyne, 2004. Effects of UV radiation on growth and phlorotannins in fucus gardneri (phaeophyceae) juveniles and embryos. . *J. Phycol.*, 40: 527-533.
- Ismail EH, Killinc E, Hardigan PC, Rothrock JK, Thompson JY & Godoy CG 2017, 'Effect of two-minute application of 35% sodium ascorbate on composite bond

- strength following bleaching', *The Journal of Contemporary Dental Practice*, Vol. 18, hh. 874-880
- Jung KH, Seon EM, Choi AN, Kwon YH & Park JK 2017, 'Time of application of sodium ascorbate on bonding to bleached dentin', *Wiley Hindawi*, Vol. 2017,
- Jyothi M & Girish K 2016, 'Conservative management of discoloured anterior teeth- a case series', *Scholars Journal of Dental Sciences*, Vol. 3 (2), hh. 58-62.
- Jiang T, Ma X, Wang Y, Zhu Z, Tong H, Hu J 2001, 'Effects of Hydrogen Peroxide on Human Dentin Structure', *Journal Of Dental Research*, Vol 86(11), hh.1040-1045.
- Koivikko, R., J. Loponen, T. Honkanen and V. Jormalainen, 2005. Contents of soluble, cell-wallbound and exuded phlorotannins in the brown alga *fucus vesiculosus*, with implications on their ecological functions. *J. Chem. Ecol*, Vol.31, hh. 195-212.
- Lai SCN, Mak YF, Cheung GSP, Osorio R, Toledano M, Carvalho RM, Tay FR & Pashley DH (2001) Reversal of compromised bonding to oxidized etched dentin *Journal of Dental Research* 80(10) 1919-1924.
- Liwang B, Irmawati & Els B 2014, 'Kekerasan mikro enamel gigi permanen muda setelah aplikasi bahan pemutih gigi dan pasta remineralisasi', *Dental Journal*, Vol. 47 (4), hh. 206-210.
- Lobo V, Patil A Phatak A & Chandra N 2010, 'Free radicals, antioxidants and functional foods: Impact on human health', *Pharmacognosy Reviews*, Vol. 4.

- Manuel ST, Abhishek P & Kundabala M 2010, 'Etiology of tooth discoloration: a review. *Nig Dent J*, Vol. 18, hh. 56-63
- Miletic V 2018, 'Dental composite materials for direct restoration', Switzerland, Springer.
- Mithra NH, Krishna RS & Shishir S 2012, 'Overview of in office bleaching of vital teeth', *Int research J of Pharmacy*, Vol. 11, hh. 12-14.
- Mohammed QA 2014, 'Tooth-bleaching procedures and their controversial effects: A literature review', *The Saudi Dental Journal*, Vol. 26, hh. 33-46.
- Matanjun P, Mohamed S, Noordin MM & Muhammad K 2008, 'Antioxidant activities and phenolics content of eight species of seaweeds from North Borneo', *Journal of Applied Phycology*, Vol. 20, no. 4, hh. 367-373.
- Mount GJ, Hume WR, Ngo HC & Wolff MS 2016, 'Preservation and restoration of tooth Structure', 3rd Ed, New Delhi India, Wiley Blackwell.
- Mahn, E 2013, 'Clinical criteria for the succesful curing of composite materials', *Revista Clinica de Periodoncia Implantoogia y Rehabilitacion. Oral*, Vol. 6, no.3, hh.148-153.
- Munavalli A, Ponnappa & Mirdha I 2015, 'Effect of 10% sodium ascorbate on shear bond strength of bleached teeth-anin vitro study. *Journal of Clinical and Diagnostic Research*, Vol. 9, no.7, hh.31-33.

- Murad CG, Andrade SN, Disconzi LR, Munchow EA, Piva E, Pacotto RC, Moura SK 2016, 'Influence of 10% sodium ascorbate gel application time on composite bond strength to bleached teeth', Vol 2(1), hh: 49-54
- Ozelin AA, Guiraldo RD, Carvalhoo RV, Lopes MB & Berger SB 2014, 'Effects of Green Tea Application Time on Bond Strength after Enamel Bleaching', *Brazilian Dental Journal*, Vo. 25, hh. 399-403.
- Oskoe et al, 2010. Effect of 10% Sodium Ascorbate on Bleached Bovine Enamel Surface Morphology and Microhardness
- Plotino G, Buono L, Grande NM, Pameijer CH, & Somma F 2008, 'Nonvital Tooth Bleaching: A Review of the Literature and Clinical Procedures', *Journal of Endodontics*, Vol. 34, no. 4,
- Park JY & Kwon TY 2013, 'Effective application duration of sodium ascorbate antioxidant in reducing microleakage of bonded composite restoration in intracoronally-bleached teeth', *Restorative Dentistry & Endodontics*, Vol. 38, hh. 43-47.
- Perdigao J 2016, 'Tooth whitening an evidence-based perspective', Springer International Publishing, Switzerland
- Plotino G, Buono L, Grande NM, Pameijer CH, Somma F 2007, 'Nonvital tooth bleaching: a review of the literature and clinical procedures', *Journa of Endodontics*, Vol.34, hh.394-407.

- Rafi M, Widyastusti N, Elly S, Darusman LK. 2012. Aktivitas Antioksidan, Kadar Fenol Dan Flavonoid Total Dari Enam Tumbuhan Obat Indonesia. *Jurnal Bahan Alam Indonesia*. 8: 10-20.
- Sathya R, Kanaga N, Sankar P, Jeeva s 2013, “Antioxidant properties of phlorotannins from brown seaweed *Cyrtoseira trinodis* (Forsskal) C. Agardh”, *Arabian Journal of Chemistry*, Vol 10, hh: 608-614
- Sharafeddin F, Farshad F, Azarian B & Afshari A 2016, ‘Effect of Green Tea Extract as Antioxidant on Shear Bond Strength of Resin Composite to in-Office and Home-Bleached Enamel’, *Journal of Dental Biomaterials*, Vol. 3, hh. 269-275.
- Suparmi & Sahri A 2009, ‘Mengenal Potensi Rumput Laut: Kajian Pemanfaatan Sumber Daya Rumput Laut dari Aspek Industri dan Kesehatan’, *Sultan Agung*, Vol. XLIV, no. 118
- Sathya R, Kanaga N & Sankar P 2013, ‘Antioxidant properties of phlorotannins from brown seaweed *Cystoseira trinodis* (Forsska^ol) C. Agardh’, *Arabian Journal of Chemistry*, Vol. 75.
- Sirisha K, Shankar R, Tanikonda R, Kumar PR 2014, ‘Validity of bond strength test : a critical review-part I, *Journal Of Conservative Dentistry*, Vol 17(4), hh 350-311
- Sirisha K, Shankar R, Tanikonda R, Kumar PR 2014, ‘Validity of bond strength test : a critical review-part II, *Journal Of Conservative Dentistry*, Vol 17 (5), hh 420-426)

- Sulieman M 2004, 'An overview of bleaching techniques : I. history, chemistry, safety and legal aspects', *Dental update*. Vol. 31, hh. 608- 616.
- Sandra C.S, Stella KP, Juliana MHM, Maria ACO, Rui FM 2010, 'Degree of conversion of resin composite light activated by halogen light and led analyzed by ultraviolet spectrometry'. *Rev Clin Pesq Odontol*, Vol. 6, no.3 hh. 223-230.
- Shahidi F, Zhong Y 2015, ' Measurement of antioxidant activity', *Journal of Functional Foods*, Vol 18, hh: 757-781
- Torabinedjad M, & Walton RE 2015, '*Endodontics Principles And Practice*, 5th ed, St. Louis, Saunders Elsevier.
- Wang T, Jonsdottir R, Liu H, Gu L, Kristinsson HG, Raghavan S & Olafsdottir G 2012, 'Antioxidant capacities of phlorotannins extracted from the brown algae *Fucus Vesiculosus*, *Journal of Agriculture and Food Chemistry*.
- Zimmerli B & Franziska K 2010, 'Bleaching of nonvital teeth, a clinically relevant literature review', *Journal of Research and Science*, Vol. 120, hh. 306-20.
- Zubia M, Payri C & Desclandes E 2008, 'Alginate, mannitol, phenolic compounds and biological activities of two range-extending brown algae, *Sargassum mangarevense* and *Turbinaria ornate* (Phaeophyta: Fucales), from Tahiti (French polynesia)', *Journal of Applied Phycology*, Vol. 20, no.6, hh. 10033-1043

ETIK PENELITIAN



KEMENTERIAN RISET, TEKNOLOGI DAN PENDIDIKAN TINGGI
UNIVERSITAS HASANUDDIN
FAKULTAS KEDOKTERAN GIGI
RUMAH SAKIT GIGI DAN MULUT
KOMITE ETIK PENELITIAN KESEHATAN
Sekretariat : Lantai 2, Gedung Lama RSGM Unhas
JL.Kandea No. 5 Makassar



Contact Person: drg. Muhammad Ikbal, Sp.Prof/Nur Aedah AR TELP. 081342971011/08114919191

REKOMENDASI PERSETUJUAN ETIK

Nomor: 0088/PL.09/KEPK FKG-RSGM UNHAS/2022

Tanggal: 04 Juli 2022

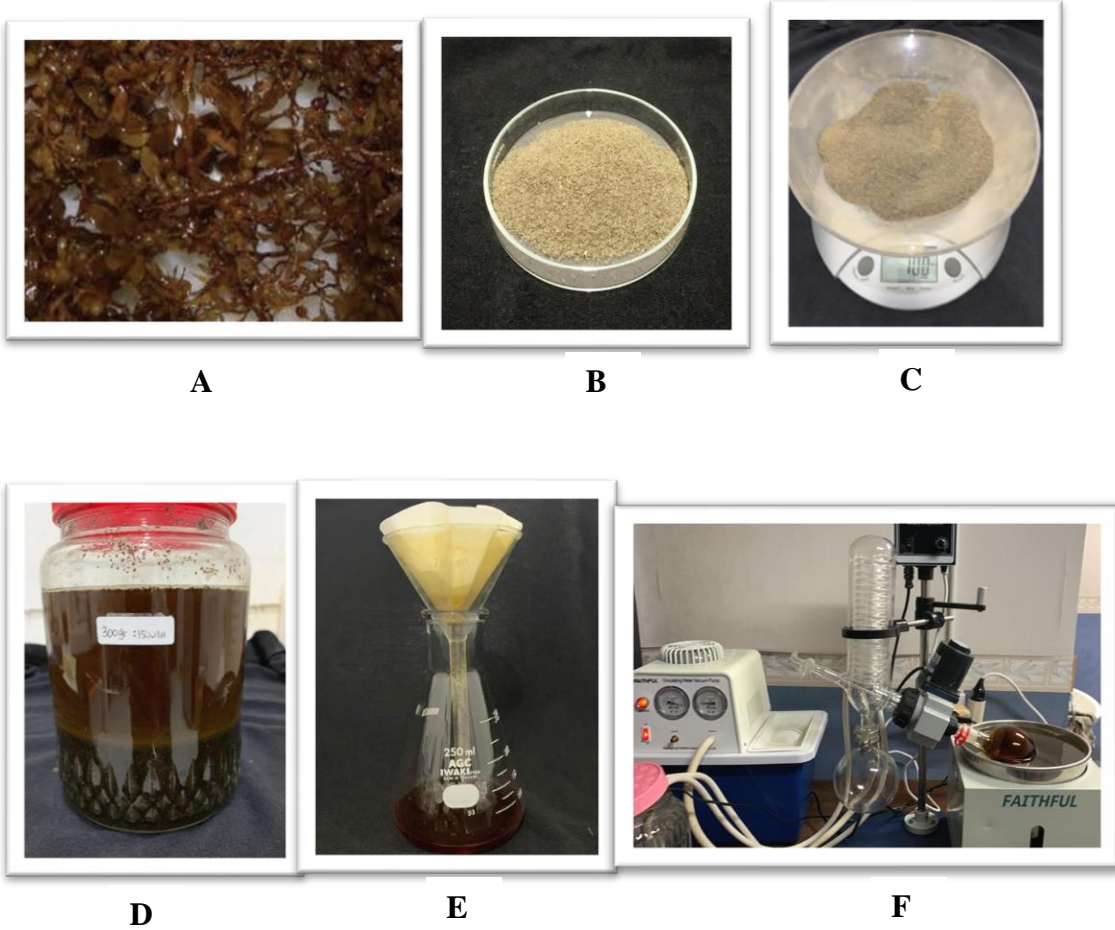
Dengan ini menyatakan bahwa protokol dan dokumen yang berhubungan dengan protokol berikut ini telah mendapatkan persetujuan etik:

No. Protokol	UH 17120672	No Protokol Sponsor	
Peneliti Utama	drg. St Asmaul Husna Hambali	Sponsor	Pribadi
Judul Peneliti	Efektivitas Ekstrak Alga Coklat (Sargassum sp) Terhadap Tensile Strength Restorasi Komposit pada gigi yang telah dilakukan bleaching		
No. Versi Protokol	1	Tanggal Versi	29 Juni 2022
No. Versi Protokol		Tanggal Versi	
Tempat Penelitian	1. Laboratorium Teknik Kimia Fakultas Teknik Kimia Politeknik Negeri Ujung Pandang, 2. RSGMP UNHAS, 3. Laboratorium Teknik Mesin Fakultas Teknik Mesin Politeknik Negeri Ujung Pandang		
Dokumen Lain			
Jenis Review	<input checked="" type="checkbox"/> Exempted <input type="checkbox"/> Expedited <input type="checkbox"/> Fullboard	Masa Berlaku 04 Juli 2022- 04 Juli 2023	Frekuensi Review Lanjutan
Ketua Komisi Etik Penelitian	Nama: Dr. drg. Marhamah, M.Kes	Tanda Tangan 	Tanggal
Sekretaris Komisi Etik Penelitian	Nama: drg. Muhammad Ikbal, Sp.Prof	Tanda Tangan 	Tanggal

Kewajiban peneliti utama:

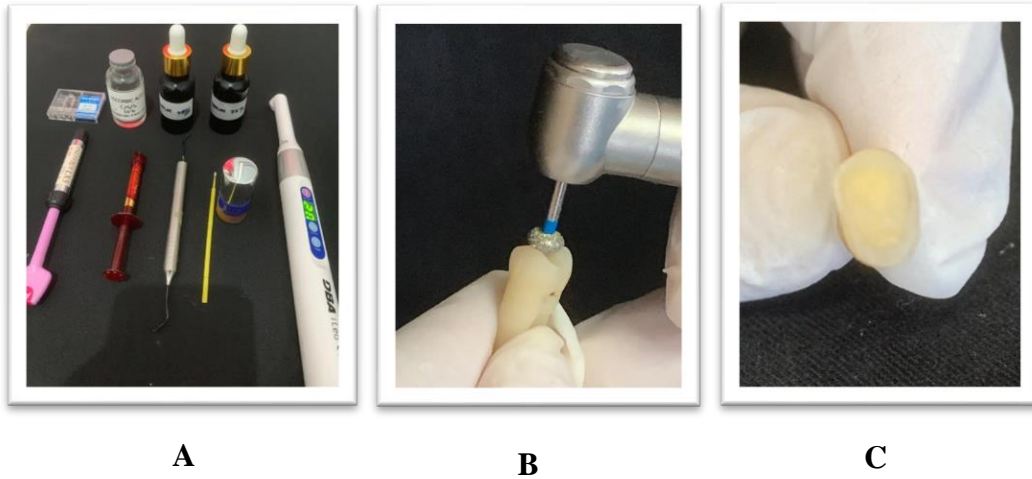
- Menyerahkan Amandemen Protokol untuk persetujuan sebelum diimplementasikan
- Menyerahkan laporan SAE ke Komisi Etik dalam 24 Jam dan dilengkapi dalam 7 hari dan lapor SUSAR dalam 72 jam setelah peneliti utama menerima laporan.
- Menyerahkan laporan kemajuan (*progress report*) setiap 6 bulan untuk penelitian resiko tinggi dan setiap setahun untuk penelitian resiko rendah.
- Menyerahkan laporan akhir setelah penelitian berakhir.
- Melaporkan penyimpangan dari protokol yang disetujui (*protocol deviation/violation*)
- Mematuhi semua aturan yang berlaku.

Gambar Pembuatan Ekstrak Alga Coklat



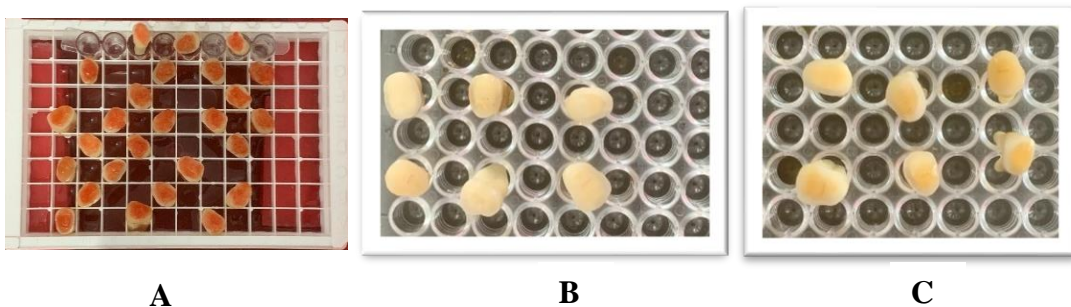
Keterangan. **A.** Alga coklat dalam keadaan basah, **B.** Alga coklat kering yang telah dihaluskan, **C.** Serbuk alga coklat ditimbang dengan timbangan analitik, **D.** Maserasi dengan ethanol 70% 4-5 hari. **E.** Hasil maserasi disaring dengan kertas withman No.1, **F.** Evaporasi selama 8 jam

Gambar Pembuatan sampel



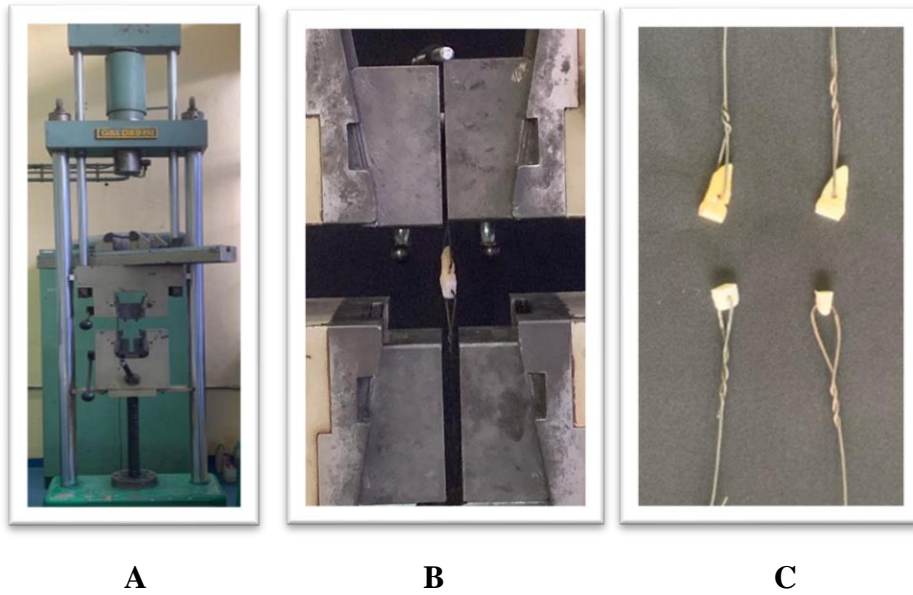
Keterangan. **A.** Bahan penelitian, **B.** Permukaan gigi dipotong sampai seluruh email terangkat dan dentin terekspose, **C.** permukaan oklusal gigi yang telah dipotong

Gambar perlakuan sampel



Keterangan. **A.** Aplikasi Hidrogen peroksida 40%, **B.** Aplikasi Sodium askorbat 10%, **C.** Aplikasi ekstrak alga coklat

Gambar Pengujian Sampel



Keterangan. **A** *Universal Testing Machine*, **B.** Uji *tensile bond strength* pada sampel, **C.** fraktur pada *interface* antara restorasi komposit dan permukaan gigi

**LAMPIRAN HASIL ANALISIS *TENSILE BOND STRENGTH* RESTORASI
KOMPOSIT**

Tests of Normality

	kelompok	Kolmogorov-Smirnov ^a			Shapiro-Wilk		
		Statistic	df	Sig.	Statistic	df	Sig.
Tensile strength	kontrol negatif	.143	6	.200*	.989	6	.987
	Sa 10%	.268	6	.200*	.905	6	.401
	AC 50%	.185	6	.200*	.974	6	.918
	AC 75%	.170	6	.200*	.944	6	.688

*. This is a lower bound of the true significance.

a. Lilliefors Significance Correction

Descriptives

Tensile strength

	N	Mean	Std. Deviation	Std. Error	95% Confidence Interval for Mean		Minimum	Maximum
					Lower Bound	Upper Bound		
kontrol negatif	6	44.17	2.85774	1.16667	41.17	47.16	40.00	48.00
Sa 10%	6	74.67	13.00256	5.30827	61.02	88.31	54.00	88.00
AC 50%	6	55.67	1.75119	.71492	53.83	57.50	53.00	58.00
AC 75%	6	66.67	4.41210	1.80123	62.03	71.29	61.00	72.00
Total	24	60.29	13.46648	2.74883	54.60	65.97	40.00	88.00

Tests of Homogeneity of Variances

		Levene	df1	df2	Sig.
		Statistic			
tegangan	Based on Mean	9.157	3	20	<.001
	Based on Median	3.314	3	20	.041

ANOVA

Tensile strength

	Sum of Squares	df	Mean Square	F	Sig.
Between Groups	3172.125	3	1057.375	21.172	<.001
Within Groups	998.833	20	49.942		
Total	4170.958	23			

ANOVA Effect Sizes^a

		Point Estimate	95% Confidence Interval	
			Lower	Upper
tegangan	Eta-squared	.761	.469	.834
	Epsilon-squared	.725	.389	.809
	Omega-squared Fixed-effect	.716	.379	.802
	Omega-squared Random-effect	.457	.169	.575

Post Hoc Tests

Multiple Comparisons

Dependent Variable: tegangan

Tukey HSD

(I) kelompok	(J) kelompok	Mean Difference (I-J)	Std. Error	Sig.	95% Confidence Interval	
					Lower Bound	Upper Bound
kontrol negatif	Sa 10%	-30.50*	4.08	<.001	-41.92	-19.08
	AC 50%	-11.50*	4.08	.048	-22.92	-.08
	AC 75%	-22.50*	4.08	<.001	-33.92	-11.08
Sa 10%	kontrol negatif	30.50*	4.08	<.001	19.08	41.92
	AC 50%	19.00*	4.08	<.001	7.58	30.42
	AC 75%	8.00	4.08	.236	-3.42	19.42
AC 50%	kontrol negatif	11.50*	4.08	.048	.08	22.92
	Sa 10%	-19.00*	4.08	<.001	-30.42	-7.58
	AC 75%	-11.00	4.08	.062	-22.42	.42
AC 75%	kontrol negatif	22.50*	4.08	<.001	11.08	33.92
	Sa 10%	-8.00	4.08	.236	-19.42	3.42
	AC 50%	11.00	4.08	.062	-.42	22.42

*. The mean difference is significant at the 0.05 level.

Homogeneous Subsets

tegangan

Tukey HSD^a

kelompok	N	Subset for alpha = 0.05		
		1	2	3
kontrol negatif	6	44.1667		
AC 50%	6		55.6667	
AC 75%	6		66.6667	66.6667
Sa 10%	6			74.6667
Sig.		1.000	.062	.236

Means for groups in homogeneous subsets are displayed.