

DAFTAR PUSTAKA

- Agusnar, Harry. 2007. *Kimia Lingkungan*. Medan : USU Press
- Aly, Sumarni Hamid. 2015. *Emisi Transportasi*. Penerbar Plus: Jakarta.
- Bachtiar, V.S. 2014. *Kajian Hubungan Antara Variasi Kecepatan Kendaraan dengan Emisi yang Dikeluarkan pada Kendaraan Bermotor Roda Empat*. Padang: Universitas Andalas
- Bachtiar. 2002. *Comparison of Air Quality Dispersion Models for Air Quality Management* MSc. Thesis, Univ. of Salford
- Badan Pusat Statistik Kota Makassar . 2018. *Kota Makassar dalam Angka*. Makassar : Badan Pusat Statistik
- Bataramulam, Nurfadilla. 2019. *Analisis Perbandingan Konsentrasi Co Dengan Menggunakan Software Caline4 Dan Impinger Di Kota Makassar*. Makassar : Departemen Teknik Lingkungan FT-UH
- Davis, N. 2008. *IVE Model Users Manual Version 2.0*
- Direktorat Jenderal Bina Marga. 1997. *Tata Cara Perencanaan Geometrik Jalan. Antar Kota. No.038/T/BM/1997*. Jakarta
- Direktorat Pembinaan Jalan Kota. 1990. *Panduan Survai Dan Perhitungan Waktu Perjalanan Lalu Lintas*. Jakarta
- Dirjen Cipta Karya. 2004. *Profil Kabupaten/Kota*. Diakses pada tanggal 02 September 2019: <http://ciptakarya.pu.go.id/profil/profil/timur/sulsel/makassar.pdf>
- Dirjen Guru dan Tenaga Kependidikan. 2018. *Memelihara dan Memperbaik Sistem Kontrol Emisi*. Indonesia : Kementerian Pendidikan dan Kebudayaan
- E. Ericson. 2001. *Independent Driving Pattern Factors And Their Influence On Fuel-Use And Exhaust Emission*. FactorTransportation Research Part D 6 (2001) 325-345

- Fardani, Elzi, dkk. 2014. *Analisi Emisi Kendaraan Truk Dengan Menggunakan Program IVEM Pada Ruas Jalan Arteri di Kota Makassar*. Makassar : Departemen Teknik Sipil FT-UH
- Hanami, Arwieny Zarah. 2017. *Analisis Hubungan Kecepatan Kendaraan Terhadap Emisi Bergerak Sepeda Motor Untuk Parameter Co Dan Co2 Di Ruas Jalan Arteri Kota Makassar*. Makassar : Departemen Teknik Lingkungan FT-UH
- Harahap, Y.Y. 2013. *Perbandingan Kadar Karbon Monoksida (CO) dan Nitrogen Dioksida (NO2) di Udara Amben Berdasarkan Keberadaan Pohon Angsana (Pterocarpus indicus di Beberapa Jalan Raya di Kota Medan Tahun 2012*. Skripsi FKM USU.
- Hobbs, F.D. 1995. *Perencanaan dan Teknik Lalu Lintas*. Yogyakarta : Penerbit Gajah Mada University Press.
- Lupita, C.P., dkk. 2013. *Analisis Pengaruh Umur Mesin, Periode Servis dan Jarak Tempuh Terhadap Konsentrasi Emisi CO, NOx, HC dan CO₂ Pada Sepeda Motor Tipe Sport (Studi Kasus : Motor Yamaha Vixion)*. Semarang : Teknik Lingkungan Universitas Diponegoro
- M. Guerrieri, F. Corriere, G. Rizzo, B. Casto, and G. Scaccianoce, “Improving the Sustainability of Transportation: Environmental and Functional Benefits of Right Turn By-Pass Lanes at Roundabouts,” *Sustainability*, vol. 7, no. 5, pp. 5838– 5856, May 2015.
- Mukono HJ. 2006. *Prinsip Dasar Kesehatan Lingkungan Surabaya*: Airlangga University Press.
- Muziansyah, dkk. 2015. Model Emisi Gas Buangan Kendaraan Bermotor Akibat Aktivitas Transportasi (Studi Kasus: Terminal Pasar Bawah Ramayana Koita Bandar Lampung). *JRSDD*, Edisi Maret 2015, Vol. 3, No. 1, Hal:57 – 70
- Nugroho, Astri. 2005. *Bioindikator Kualitas Udara* . Jakarta: Universitas Trisakti.

- Octradha, Kanda Arjuna. 2017. *Estimasi Emisi Berdasarkan Kecepatan Kendaraan di Beberapa Ruas Jalan Kota Semarang*. Semarang: Jurnal Teknik Lingkungan vol. 6, No. 2
- Pemerintah Republik Indonesia. 1993. *Peraturan Pemerintah Republik Indonesia Nomor 44 Tahun 1993 tentang Kendaraan dan Pengemudi*. Jakarta.
- Pemerintah Republik Indonesia. 1995. *Peraturan Pemerintah Republik Indonesia No. 13 Tahun 1995 Tentang Baku Mutu Emisi Sumber Tidak Bergerak* . Jakarta.
- Pemerintah Republik Indonesia. 1999. *Peraturan Pemerintah Republik Indonesia No. 41 Tahun 1999 Tentang Pengendalian Pencemaran Udara*. Jakarta.
- Pemerintah Republik Indonesia. 2012. *Peraturan Pemerintah Republik Indonesia Nomor 55 Tahun 2012 tentang Kendaraan*. Jakarta.
- Pemerintah Republik Indonesia. 2012. *Peraturan Pemerintah Republik Indonesia Pasal 11, PP.No.43/1993 tentang Jalan*. Jakarta.
- Pemerintah Republik Indonesia. 2017. *Peraturan Menteri Lingkungan Hidup Nomor P.20/MENLHK/SETJEN/KUM.1/3/2017 tentang Baku Mutu Emisi Gas Buang Kendaraan Bermotor Tipe Baru Kategori M, Kategori N, dan Kategori O*. Jakarta.
- Putra, Fatrizal, dkk. 2012. *Studi Emisi Kendaraan Di Kota Makassar Dengan Metode International Vehicle Emission Model*. Makassar : Departemen Teknik Sipil FT-UH
- Romon, Oktafiana, dkk. 2016. *Jurnal Analisis Penyebaran Polutan Co2 Kendaraan Bermotor Berbasis Model Dispersi Gauss*. Makassar : Departemen Teknik Sipil FT-UH
- Sarudji, Didik. 2010. *Kesehatan Lingkungan*. Bandung : CV Karya Putra Derwati
- Sunu, Pramudya. 2001. *Melindungi Lingkungan dengan Menerapkan ISO 14001*. Jakarta : Grasindo.

Wanudyajati, Raras , dkk. 2013. *Analisis Pengaruh Jarak Tempuh, Periode Servis dan Umur Mesin Terhadap Konsentrasi CO,HC, NO_x, dan CO₂ Pada Kendaraan Niaga. (Studi Kasus Motor Tossa)*. Semarang : Departemen Teknik Lingkungan Universitas Diponegoro.

Wibisana, Hendrata ,dkk,2017. *Analisis Perlambatan Kecepatan Kendaraan Di Penghujung Traffic Light Perempatan Jalan Dengan Menggunakan Persamaan Differensial Derajat Satu. (Studi Kasus Ruas Jalan Ir. H. Soekarno–Kertajaya Indah Surabaya)* . Surabaya : Jurnal Aplikasi Teknik Sipil, Volume 15, Nomor 2, Agustus 2017 (61-66)

Lampiran 1: Penentuan Sample

No	Lokasi SPBU	Waktu pengambilan data (jam)	Jenis bahan Bakar								Jumlah
			Pertamax	Pertamax Turbo	Pertamina dex	Pertalite	Dexlite	Premium	Biosolar	Solar	
1	Jl Perintis Kemerdekaan I	8-9	3	1	7	9		85		3	108
2	Jl Perintis Kemerdekaan II	8-9				5		44			49
3	Jl Perintis Kemerdekaan III	8-9			4	10		75			89
4	Jl Perintis Kemerdekaan IV	8-9			4	65					69
5	Jl. Perintis Kemerdekaan V	8-9	7			21		67		6	101
6	Jl. Urip Sumiharjo 1	8-9				3		24			27
7	Jl. Urip Sumiharjo 2	8-9	18			27		19		23	87
8	Jl. Mesjid Raya No. 184	8-9				13		33		1	47
9	Jl. G. Bawakaraeng lr.75 B	8-9	4	1		13		87			105
10	jl. Veteran selatan	8-9	4			8		43			55
11	SPBU- 74.902.09 Gunung Sari	8-9	19			6		19			44
12	jl. Alauddin (SPBU Talasalapang)	8-9	5		1	11		54			71
13	Jl. Alauddin dkt McD	8-9	11		2			34			47
Jumlah			71	2	18	191		584		33	

Lampiran 2 : KUISIONER

FORMULIR SURVEI KARAKTERISTIK KENDARAAN RINGAN

- a. Nama :
- b. Alamat :
- c. Umur : Tahun

d. Jenis Kelamin

Perempuan Laki-laki

- e. No. Plat Kendaraan :
- f. Odometer Kendaraan :
- g. CC Kendaraan :
- h. Tahun Produksi :
- i. Tahun Pembelian :

j. Apakah jenis pekerjaan Anda? (*Jawaban: 1-15*)

- | | |
|-----------------------------------|----------------------------------|
| 1. Perikanan/Pertanian/Perhutanan | 8. Penyediaan Listrik/Gas/Air |
| 2. Pertambangan | 9. Jasa Pemerintah Pusat |
| 3. Industri/Manufacture | 10. Jasa Pemerintah Daerah |
| 4. Konstruksi | 11. Penyewaan/Rental |
| 5. Komunikasi dan Transportasi | 12. Industri Jasa/Service |
| 6. Bank/Finance/Asuransi | 13. Militer/Polisi |
| 7. Usaha dagang/Wiraswasta | 14. Pengajar (Ustadz/Guru/Dosen) |
| | 15. Lainnya..... |

k. Apakah status mengendara anda? (*Jawaban: 1-4*)

- | | |
|----------------------|-----------------|
| 1. Pemilik Kendaraan | 4. Lainnya..... |
| 2. Sewa/ Pinjam | |
| 3. Supir Kendaraan | |

l. Apakah merek dan tipe kendaraan anda? (*Jawaban: 1-18*)

1. Toyota
(New Kijang Innova/ Innova/ New Avanza/ New Fortuner/ Fortuner/ New Rush/ Rush/ C-HR/ New Voxy/
New Veloz/ New Vellfire/ New Venturer/ New Alphard/ New Sienta/ New Calya/ New Yaris/ New Vios/
New Corolla Altis/ All New Camry/ New Agya)
2. Honda
(Jazz/ Brio/ Mobilio/ BRV/ HR-V/ CR-V/ City/ Civic/ Accord/ CR-Z/ Odyssey/ Stream)
3. Hyundai
(Accent/ Excel li/ New Atoz 1.1/ Trajet)
4. Suzuki
(New Baleno/ New Ignis/ New Ertiga/ New Swift/ New SX-Cross/ APV Arena/ Grand Vitara/ Carry 1.5
Mini Bus/Carry 1.0 Mini Bus/ Carry 1.5 Pick Up/Carry 1.0 Pick Up)
5. KIA
(KIA K 2700/ Picanto)
6. Nissan
(Livina/ March/ Xtrail/ Navara/ Serena/ Juke/ Teana/ Terra/ Elgrand)
7. Mercedes Benz
(B-Class/ A-Class/ C-Class/ CLA-Class/ GLA Class)
8. Isuzu
(Panther/ D-Max/ Pick-Up/ Elf/ Giga/ C Series/ MuX)
9. Ford
(Fiesta/ Ranger/ Eco Sport/ Everest/ Focus/ Laser/ Mustang/ Falcon/ Escape)
10. Daihatsu

(Grand Max Pick Up/ New Ayla/ New Sigr/ Grand New Xenia/ New Terios/ New Sirion/ Luxio)

11. Mitsubishi

(New Triton/ Pajero Sport/ Xpander/ Outlander/ L300)

12. BMW

(X1/ X2/ 3 Series/ 5 Series/ X3)

13. Cherry

(Trans Cab/ QQ/ Tiggo/ Eastar ES)

14. Jeep

(Wrangler/ Cherokee/ Grand Cherokee/ Renegade/ Compass/)

15. Audi

(R8/ A6/ A7/ TTS Coupe/ TT Coupe/ A3/ Q5/ A5/ A8L/ RS5/ Q8)

16. Mazda

(2/ 3/ CX-3/ CX-5/ 6/ Biante/ MX-5/ CX-5)

17. Lainnya...

m. Apa jenis bahan bakar kendaraan anda? (*Jawaban: 1-8*)

1. Premium
2. Pertamina
3. Pertamina Plus
4. Pertamina Racing

5. Solar
6. Pertamina Dex
7. Peralite
8. Lainnya.....

n. Apa jenis kendaraan anda? (*Jawaban: 1-6*)

1. Sedan
2. Non Sedan
3. Mini Bus

4. Jeep
5. Pick up
6. Lainnya.....

o. Apakah tipe transmisi kendaraan anda?

Manual

Matic

Lampiran 3 : Hasil Survei (Data Tracking) Dari Gps Yang Dihubungkan Dengan Program Mapsource

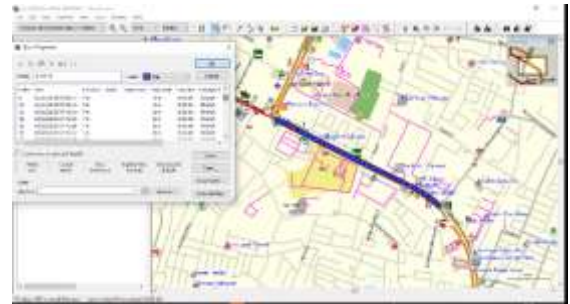
JALAN SULTAN ALAUDDIN

((Arah A))

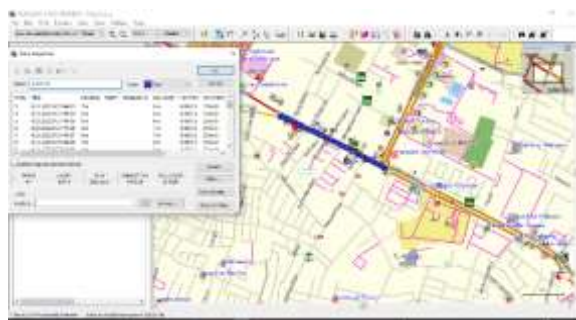
PAGI



SEGMENT 1

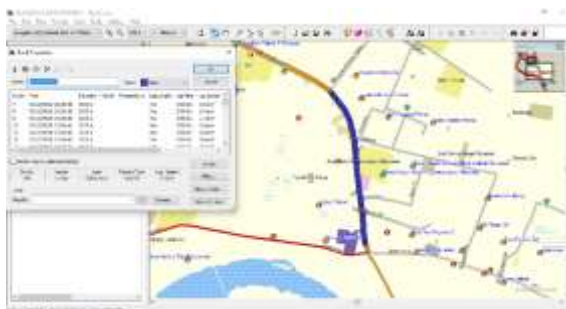


SEGMENT 2



SEGMENT 3

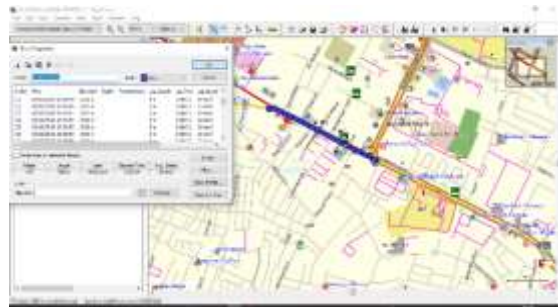
SIANG



SEGMENT 1



SEGMENT 2



SEGMENT 3

SORE



SEGMENT 1



SEGMENT 2

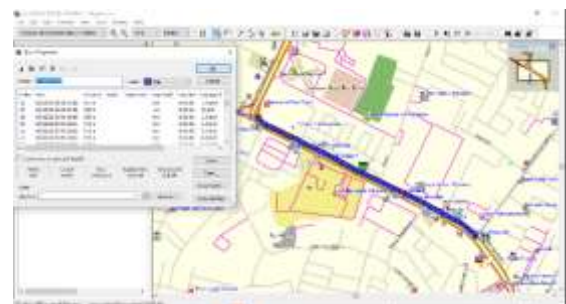


SEGMENT 3

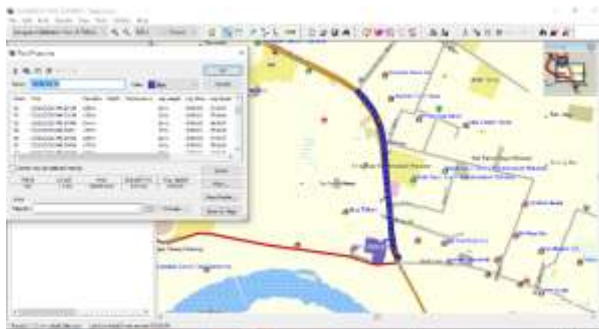
((Arah B))



SEGMENT 1

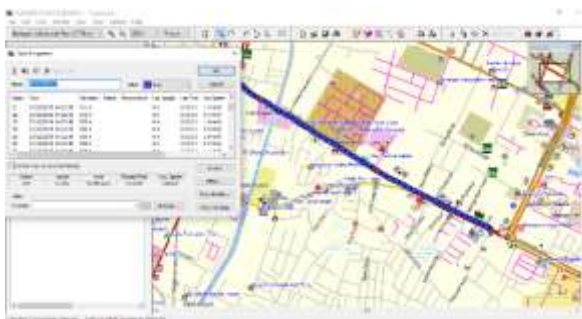


SEGMENT 2

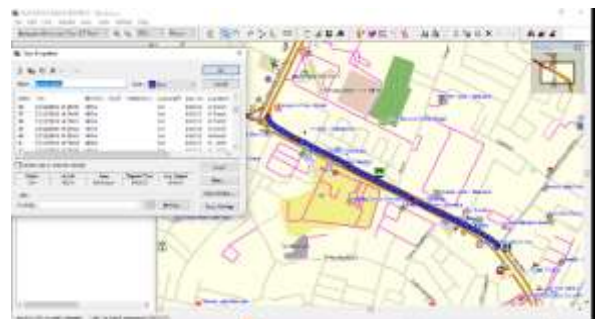


SEGMENT 3

SIANG



SEGMENT 1

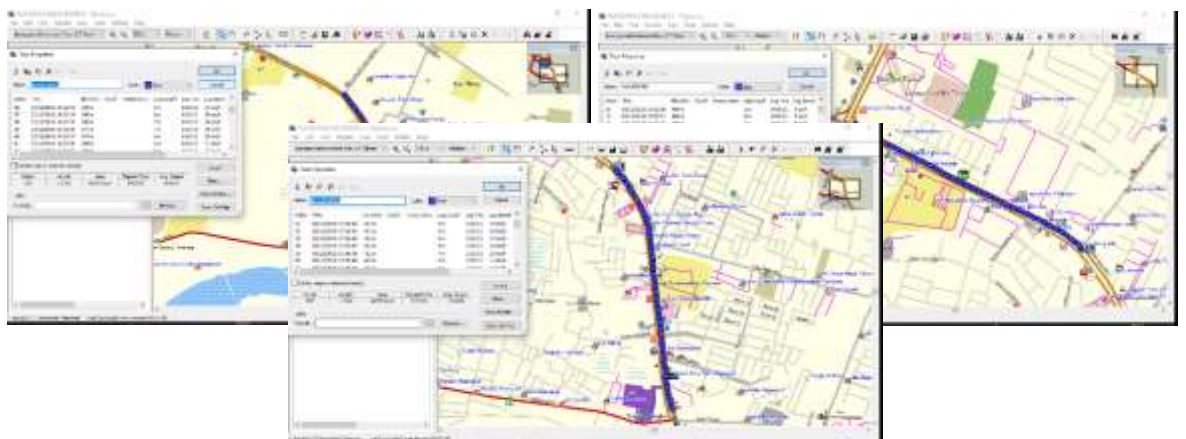


SEGMENT 2



SEGMENT 3

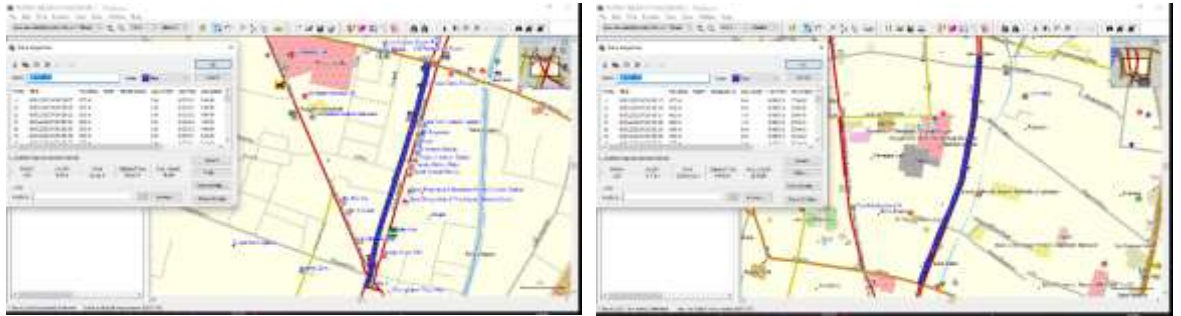
SORE



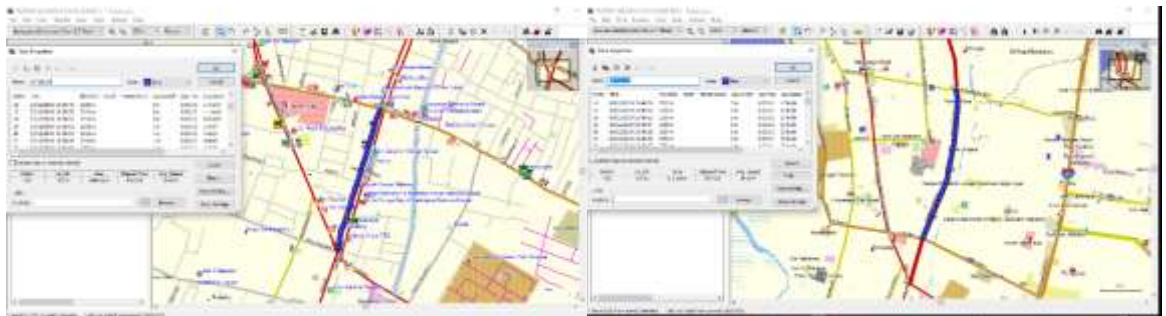
VETERAN SELATAN

((Arah A))

PAGI (SEGMENT 1 & SEGMENT 2)



SIANG (SEGMENT 1 & SEGMENT 2)

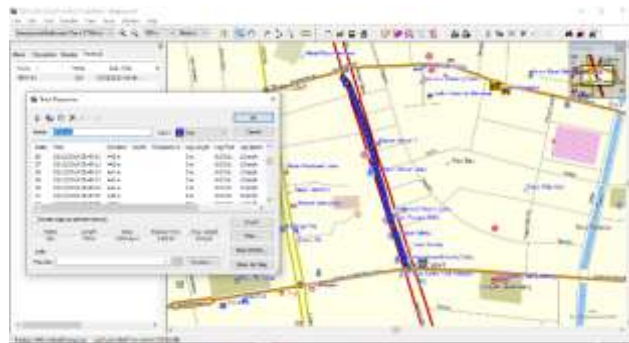
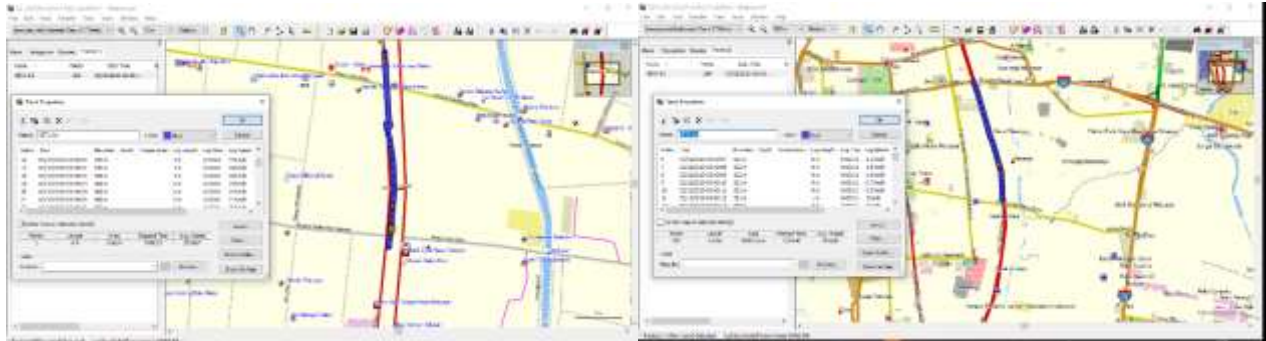


SORE (SEGMENT 1 & SEGMENT 2)

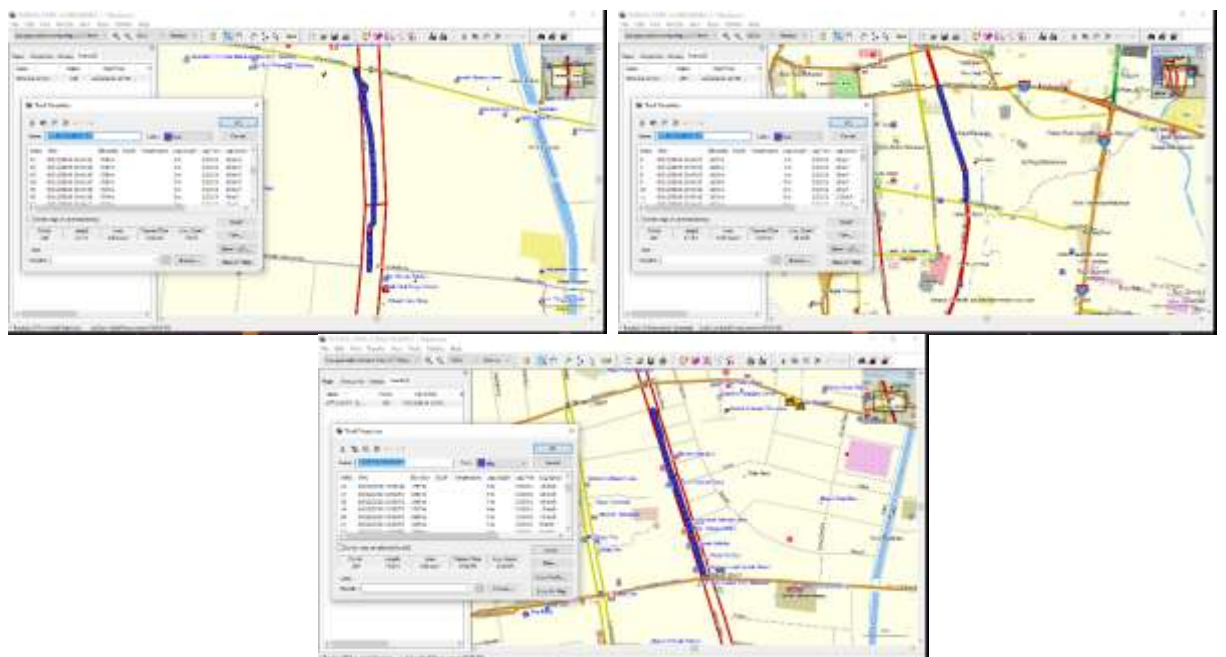


((Arah B))

PAGI



SIANG

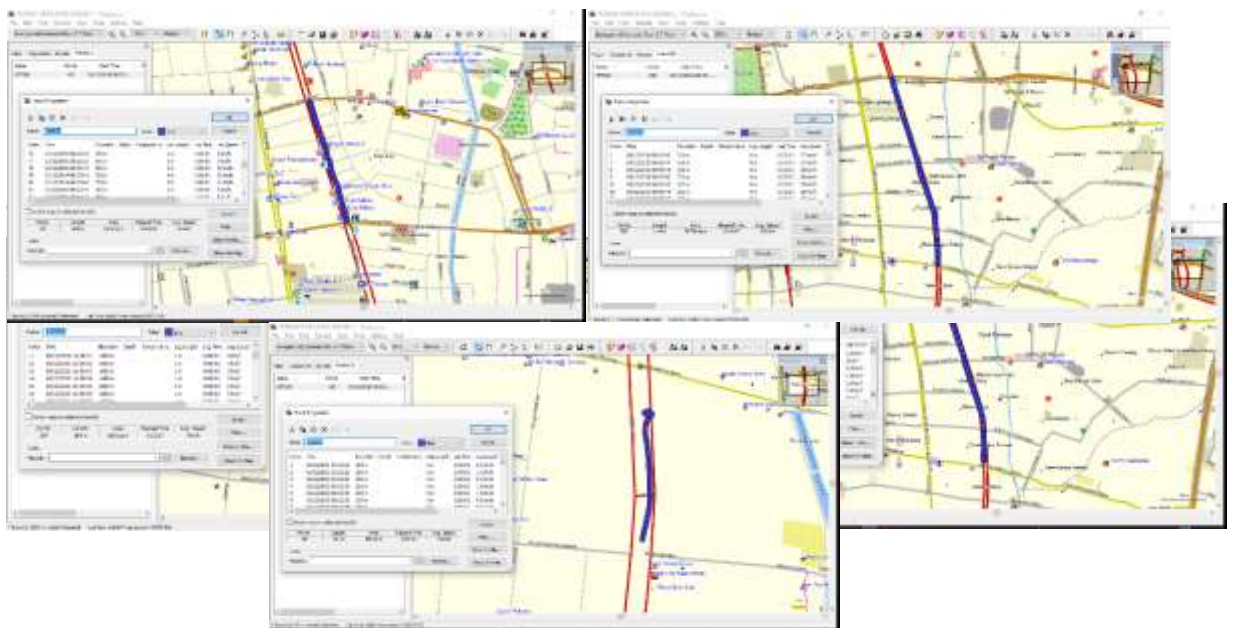


SORE



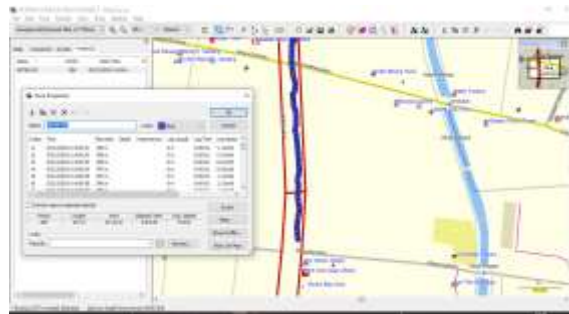
((Arah B))

PAGI

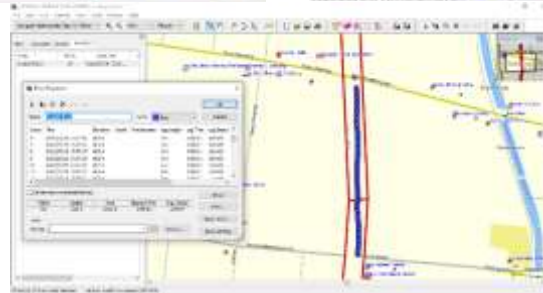


SIANG





SORE

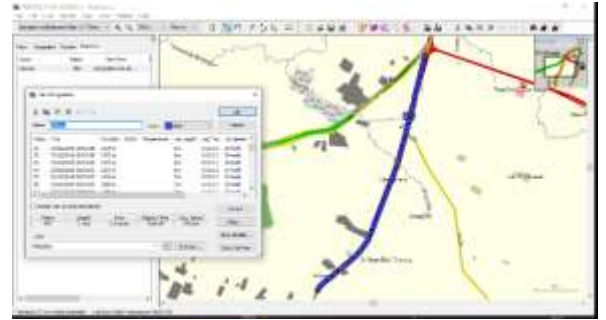


JALAN PERINTIS KEMERDEKAAN

((Arah A))

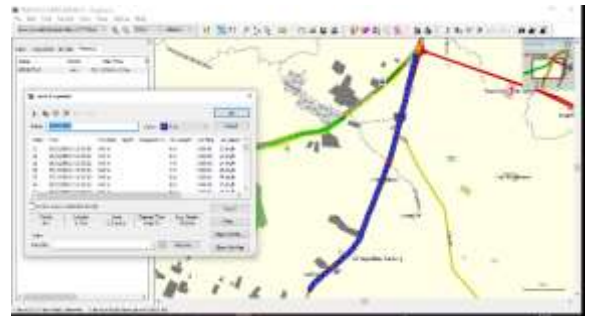
Pagi (SEGMENT 1, 2, 3, 4, 5, dan SEGMENT 6)



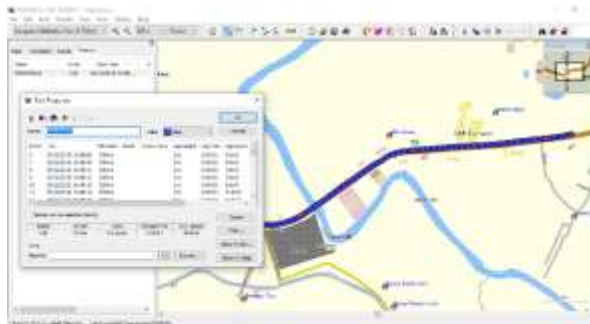


Siang (SEGMENT 1, 2, 3, 4, 5, dan SEGMENT 6)



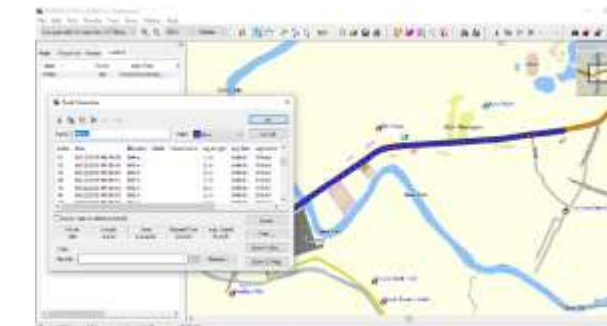
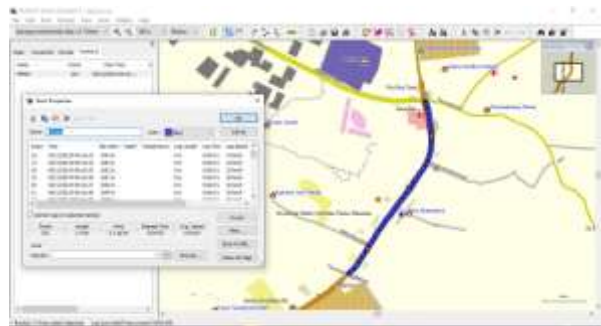
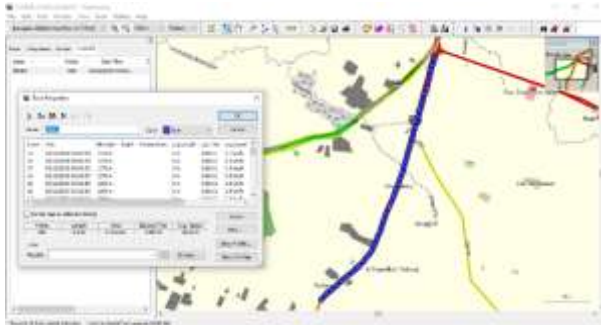


Sore (SEGMENT 1, 2, 3, 4, 5, dan SEGMENT 6)

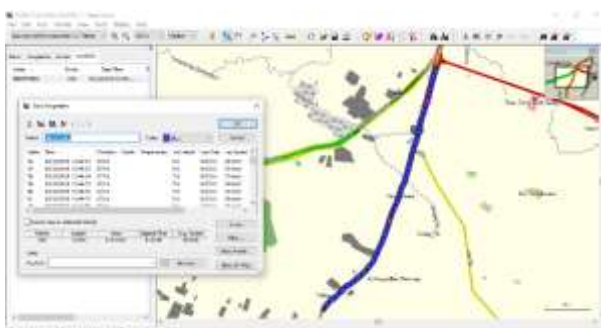


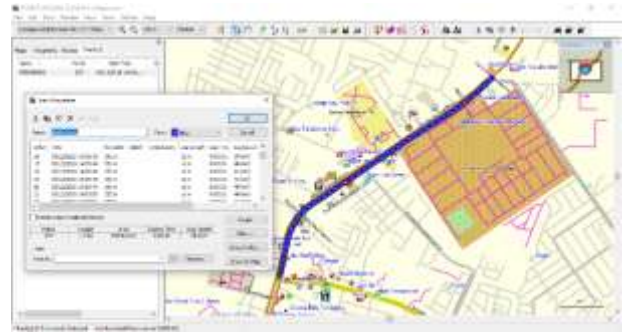
((Arah B))

PAGI (SEGMENT 1, 2, 3, 4, 5, dan SEGMENT 6)



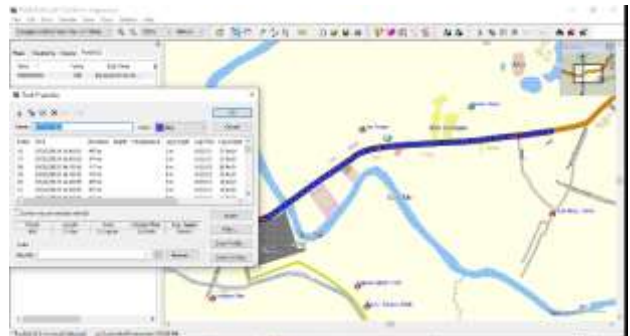
SIANG (SEGMENT 1, 2, 3, 4, 5, dan SEGMENT 6)





SORE (SEGMENT 1, 2, 3, 4, 5, dan SEGMENT 6)

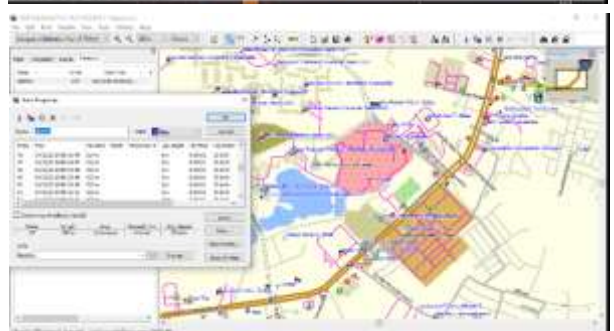
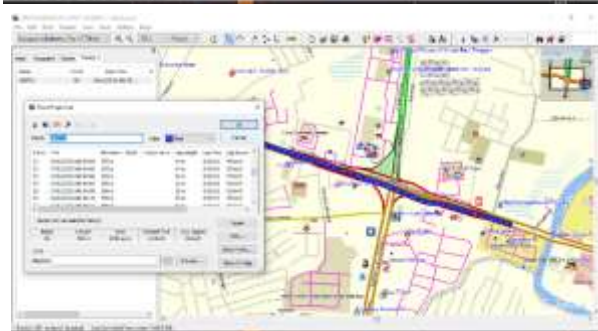




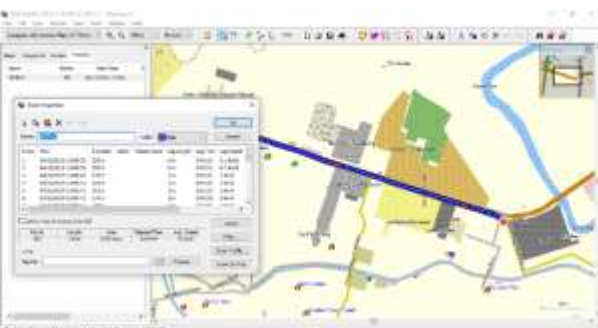
JALAN URIP SUMOHARJO

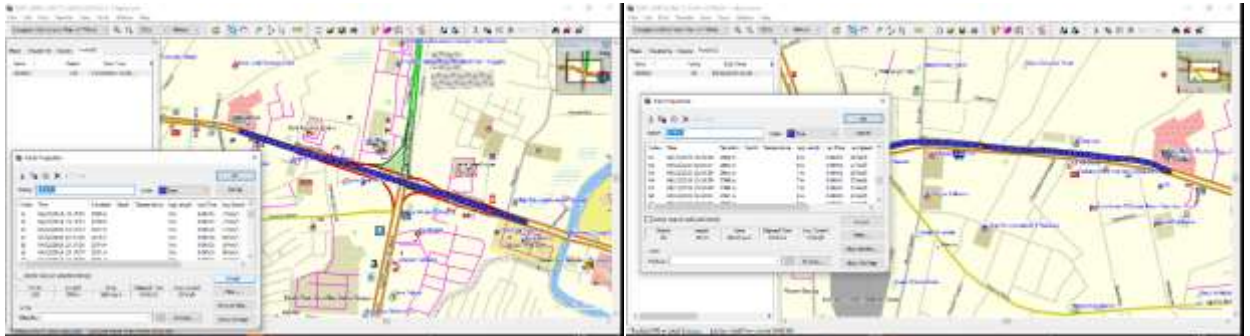
((Arah A))

PAGI (SEGMENT 1, SEGMENT 2, SEGMENT 3, dan SEGMENT 4)

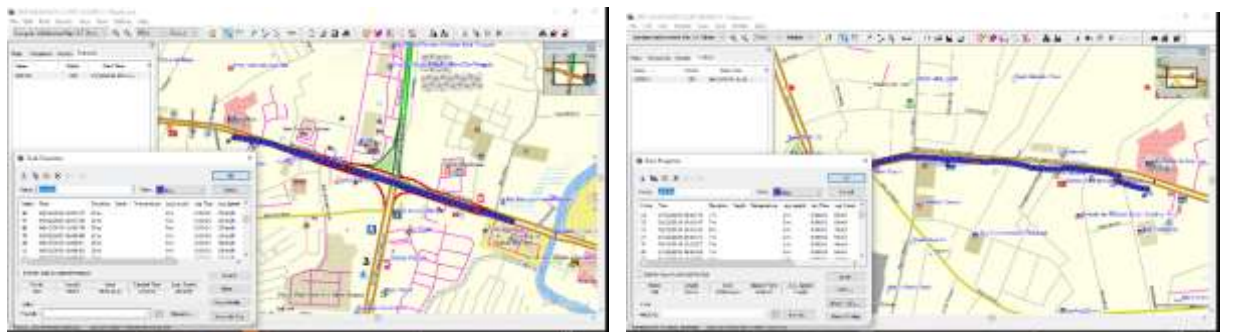
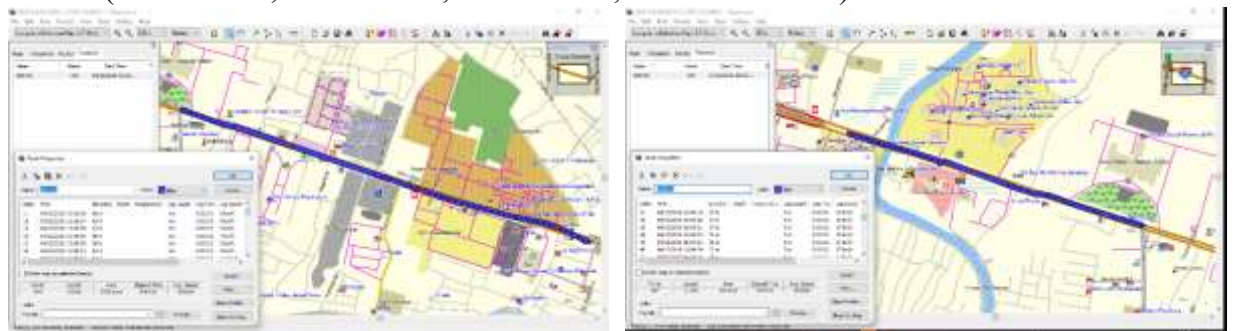


SIANG (SEGMENT 1, SEGMENT 2, SEGMENT 3, dan SEGMENT 4)



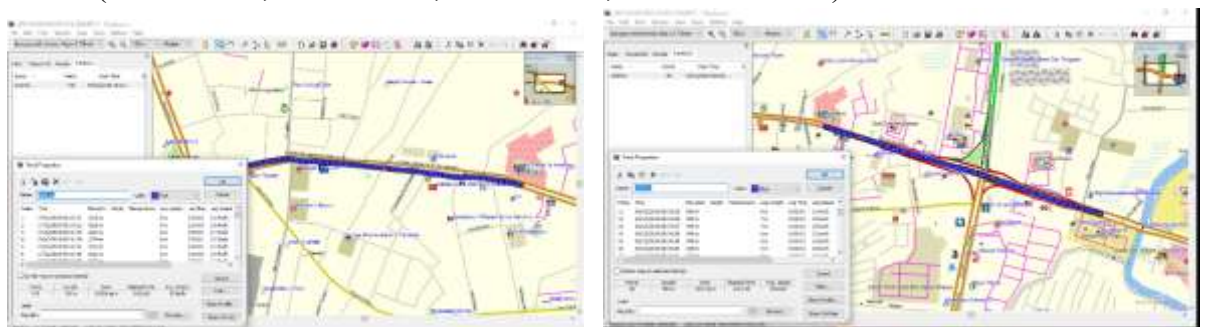


SORE (SEGMEN 1, SEGMEN 2, SEGMEN 3, dan SEGMEN 4)



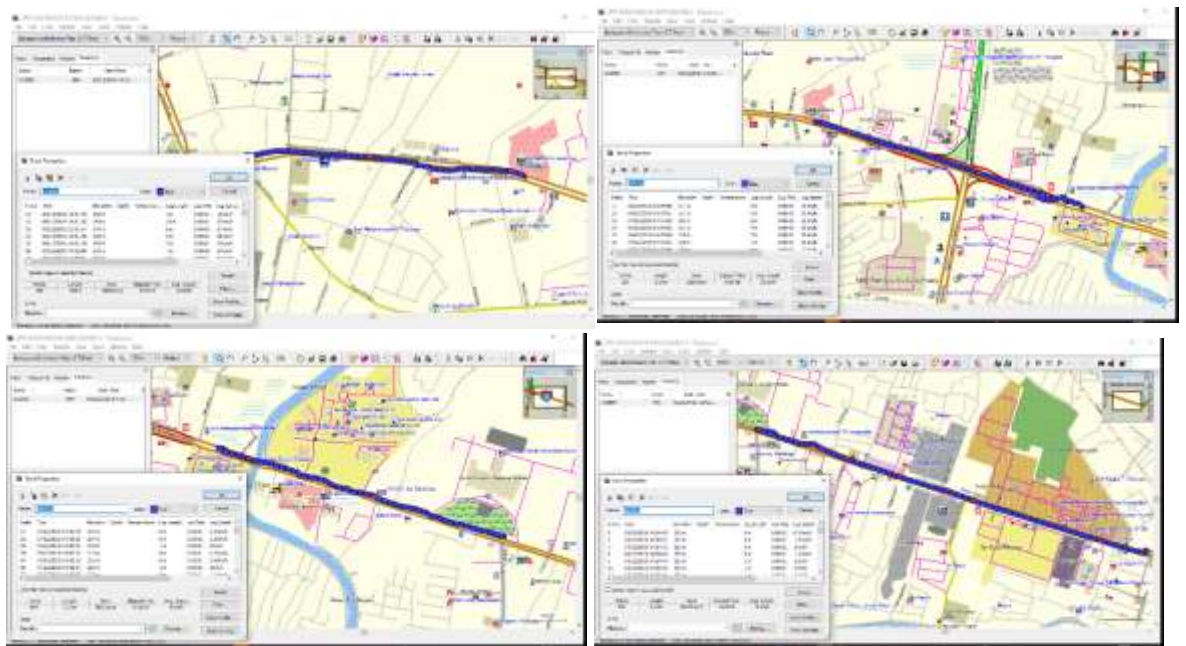
((Arah B))

PAGI (SEGMEN 1, SEGMEN 2, SEGMEN 3, dan SEGMEN 4)

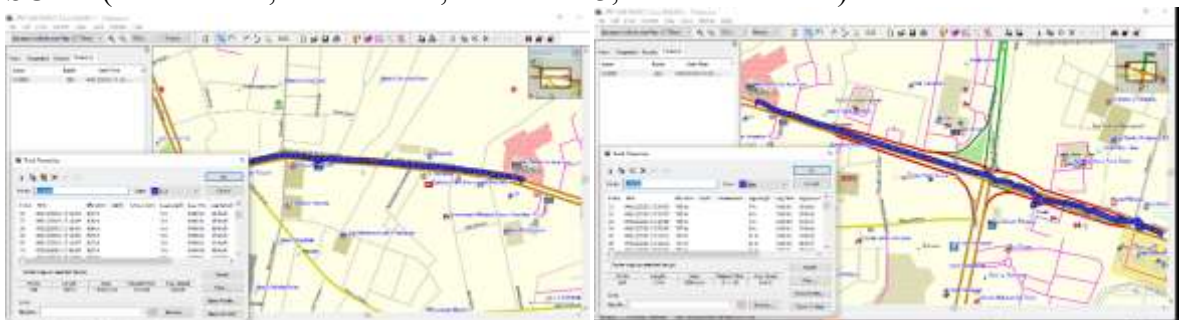


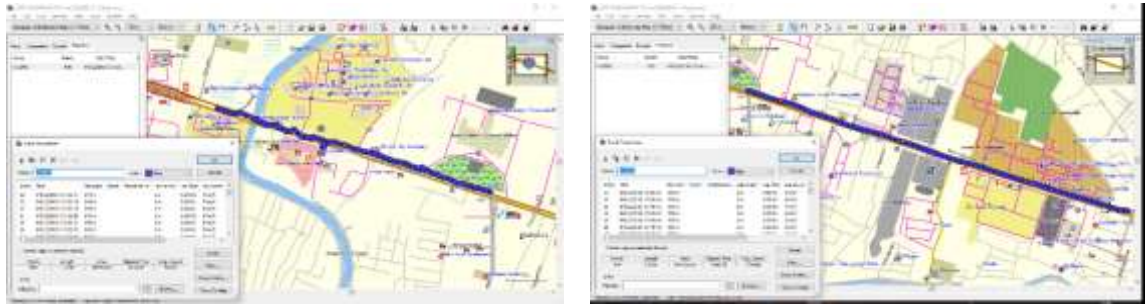


SIANG (SEGMEN 1, SEGMEN 2, SEGMEN 3, dan SEGMEN 4)



SORE (SEGMEN 1, SEGMEN 2, SEGMEN 3, dan SEGMEN 4)





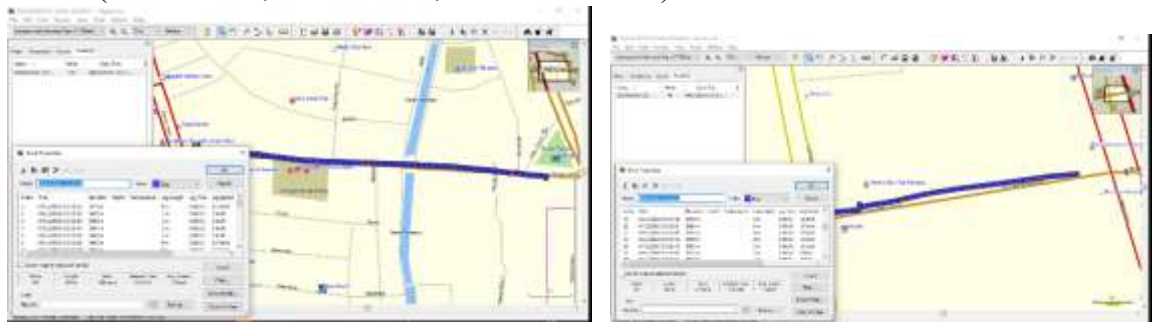
JALAN GUNUNG BAWAKARAENG

((Arah A))

PAGI (SEGMENT 1, SEGMENT 2, dan SEGMENT 3)

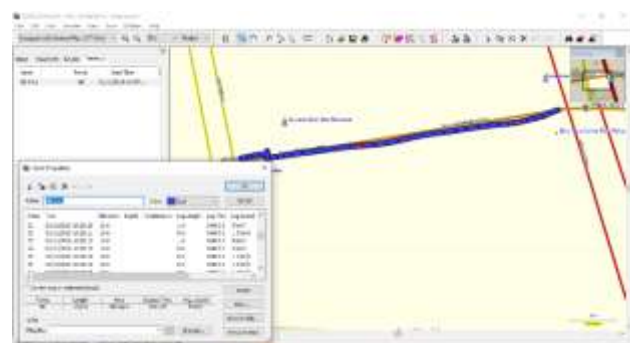
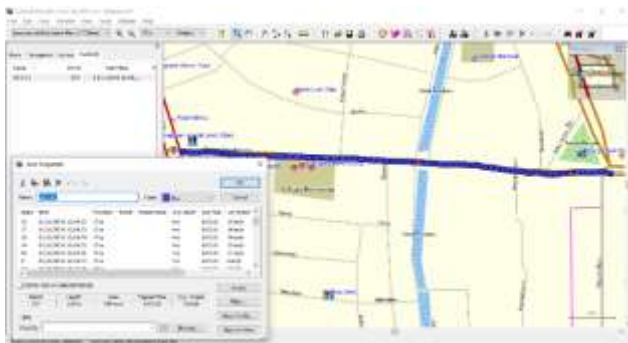


SIANG (SEGMENT 1, SEGMENT 2, dan SEGMENT 3)



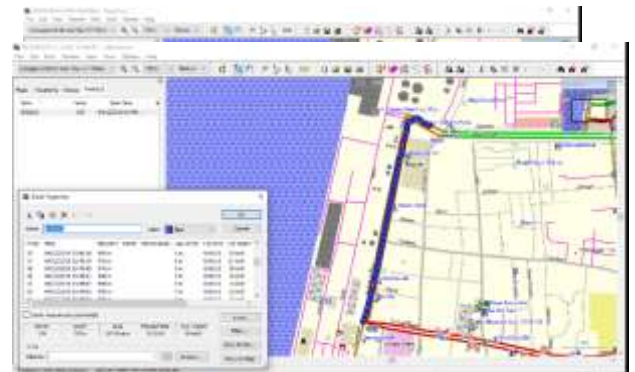


SORE (SEGMENT 1, SEGMENT 2, dan SEGMENT 3)



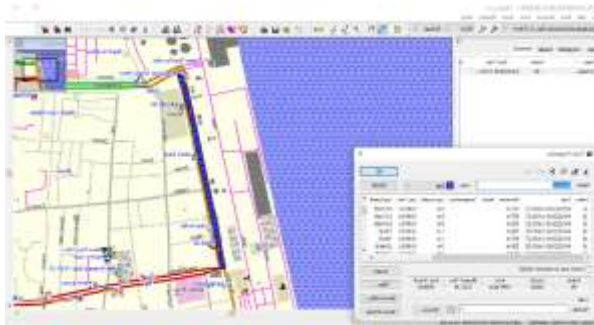
JALAN NUSANTARA

((Arah A))PAGI (SEGMENT 1 & SEGMENT 2)

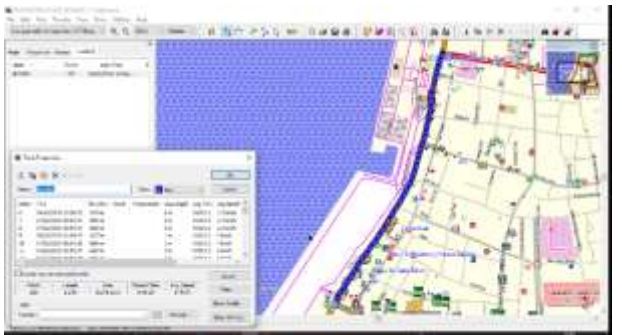
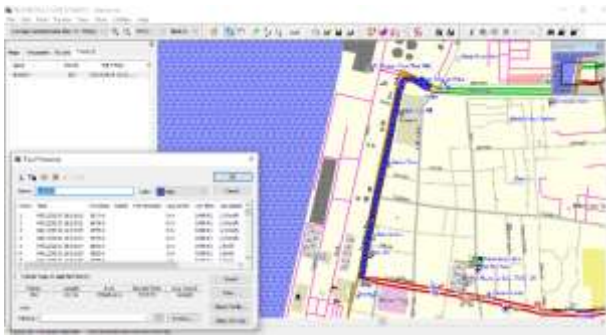


SIANG (SEGMENT 1 & SEGMENT 2)

SIANG (SEGMENT 1 & SEGMENT 2)



SORE (SEGMENT 1 & SEGMENT 2)



JALAN RIBURA'NE

((Arah A))

PAGI



SIANG



SORE



((Arah B))

PAGI



SIANG



SORE

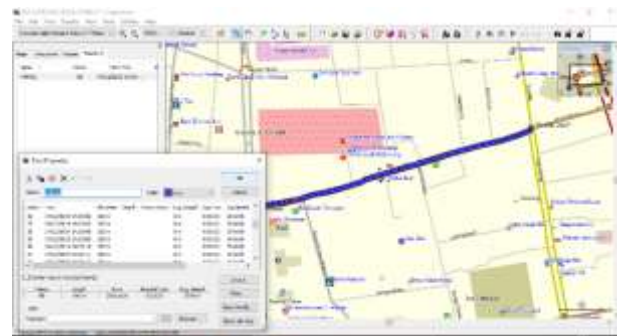
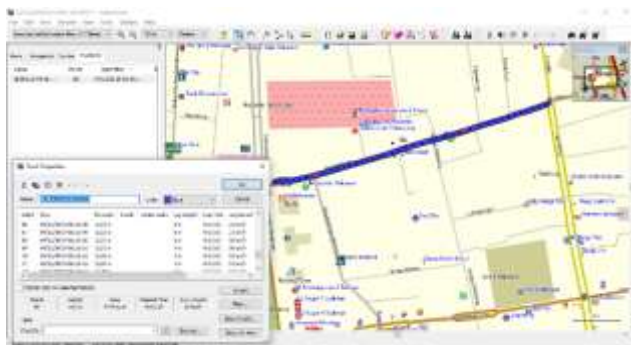


JALAN AHMAD YANI

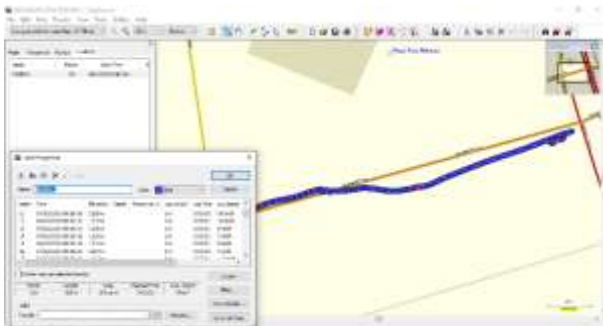




JALAN GUNUNG BULUSARAUNG

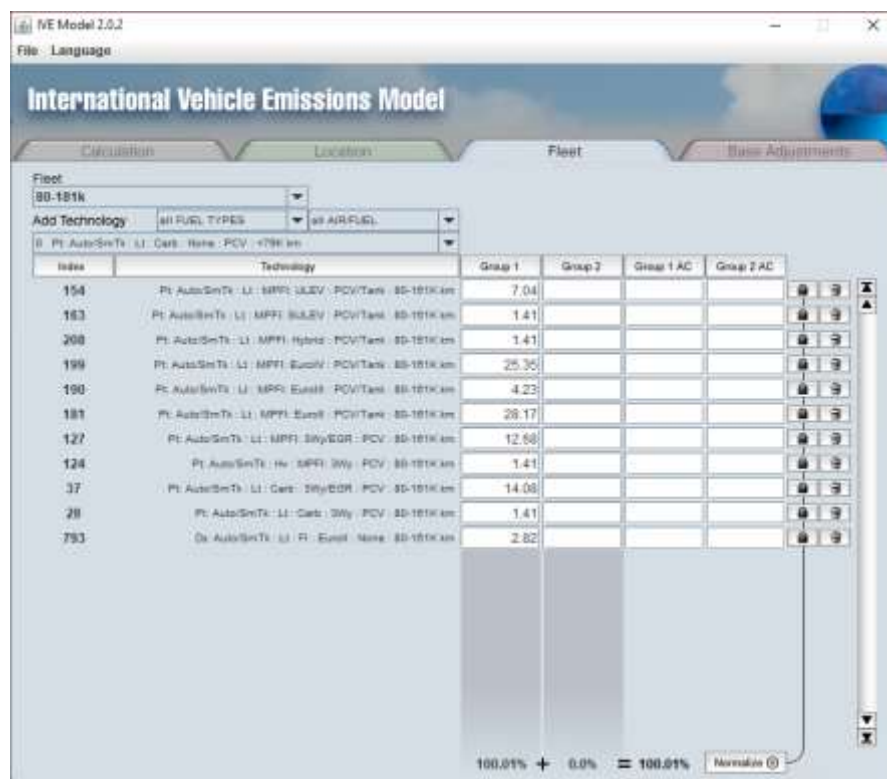


JALAN MASJID RAYA (SEGMENT 1, SEGMENT 2, dan SEGMENT 3)





Lampiran 4: Tampilan *tab fleet* pada Aplikasi IVEM



Lampiran 5: Tampilan *tab Location*

International Vehicle Emissions Model

Location: **PERDENTIS S1 A PAGI** | Fuel: **e25k** | Base Adjustment: **none**

Day: **05** | Month: **December** | Year: **2019** | Day of the week: **Thursday** | Altitude: **2120.0 meters** | IM Class: **none**

A/C Use at 27°C (80°F): **50.0 %** | Road Grade: **0.0 %**

Fuel Characteristics

Gasoline: **moderate/premixed** | Sulfur (S): **moderate (300ppm)** | Lead (Pb): **none** | Reform: **moderate (1.50%)** | Oxygenate: **0%**

Diesel: **moderate** | Sulfur (S): **moderate (500ppm)**

Hour: **08:00** | Use this hour

Driving Characteristics: VSP test Soak test

Humidity: **80.0 %** | Distance/Time: **1.7 kilometers** | Start-ups: **0.0**

Temperature: **80.0 Fahrenheit**

Hour	CO (g/kWh)	CO2 (g/kWh)	CH4 (g/kWh)	HC (g/kWh)	NOx (g/kWh)	PM (g/kWh)	PM2.5 (g/kWh)	PM10 (g/kWh)	SO2 (g/kWh)
08:00-09:00	3.03	10.1	2.7	3.03	1.68	1.68	2.92	1.25	74.41
09:00-10:00									
10:00-11:00									
11:00-12:00									
12:00-13:00									
13:00-14:00									
14:00-15:00									
15:00-16:00									
16:00-17:00									
17:00-18:00									
18:00-19:00									
19:00-20:00									
20:00-21:00									
21:00-22:00									
22:00-23:00									
23:00-24:00									
Total									100.0 %

Average Velocity: **20.5 miles**

15 min: **100.0 %** | 30 min: **100.0 %** | 1 hour: **100.0 %** | 2 hours: **100.0 %** | 3 hours: **100.0 %** | 4 hours: **100.0 %** | 6 hours: **100.0 %** | 8 hours: **100.0 %** | 12 hours: **100.0 %** | 18 hours: **100.0 %**

International Vehicle Emissions Model

Location: **PERDENTIS S1 A SIANG** | Fuel: **e25k** | Base Adjustment: **none**

Day: **05** | Month: **December** | Year: **2019** | Day of the week: **Thursday** | Altitude: **1921.0 meters** | IM Class: **none**

A/C Use at 27°C (80°F): **50.0 %** | Road Grade: **0.0 %**

Fuel Characteristics

Gasoline: **moderate/premixed** | Sulfur (S): **moderate (300ppm)** | Lead (Pb): **none** | Reform: **moderate (1.50%)** | Oxygenate: **0%**

Diesel: **moderate** | Sulfur (S): **moderate (500ppm)**

Hour: **08:00** | Use this hour

Driving Characteristics: VSP test Soak test

Humidity: **70.0 %** | Distance/Time: **1.7 kilometers** | Start-ups: **0.0**

Temperature: **75.2 Fahrenheit**

Hour	CO (g/kWh)	CO2 (g/kWh)	CH4 (g/kWh)	HC (g/kWh)	NOx (g/kWh)	PM (g/kWh)	PM2.5 (g/kWh)	PM10 (g/kWh)	SO2 (g/kWh)
08:00-09:00	4.77	22.27	7.95	1.38	1.14	0.23	0.91	0.91	61.36
09:00-10:00									
10:00-11:00									
11:00-12:00									
12:00-13:00									
13:00-14:00									
14:00-15:00									
15:00-16:00									
16:00-17:00									
17:00-18:00									
18:00-19:00									
19:00-20:00									
20:00-21:00									
21:00-22:00									
22:00-23:00									
23:00-24:00									
Total									100.0 %

Average Velocity: **18.5 miles**

15 min: **100.0 %** | 30 min: **100.0 %** | 1 hour: **100.0 %** | 2 hours: **100.0 %** | 3 hours: **100.0 %** | 4 hours: **100.0 %** | 6 hours: **100.0 %** | 8 hours: **100.0 %** | 12 hours: **100.0 %** | 18 hours: **100.0 %**

VE Model 2.0.2
File Language

International Vehicle Emissions Model

Calculation **Location** **Fuel** **Base Adjustments**

Location: PERONIS S1 A SORE Fleet: 4796 Base Adjustment: none
 Day: 05 Month: December Year: 2019 Day of the week: Thursday Altitude: 3370.1 meters IM Class: none
 A/C Use at 27°C (80°F): 50.0% Road Grade: 0.0%

Fuel Characteristics

Gasoline: Overall: moderate/premixed Sulfur (S): moderate (300ppm) Lead (Pb): none Benzene: moderate (1.50%) Oxygenate: 0%
 Diesel: Overall: moderate Sulfur (S): moderate (500ppm)

Hour: 05:00 Use the hour: VSP line: Peak line:

Driving Characteristics

Humidity: 60.0% Distance/Time: 1.7 kilometers Start-ups: 0.0
 Temperature: 75.2°F/24.6°C

Group 1	Group 2	Group 3	Group 4	Group 5	Group 6	Group 7	Group 8	Group 9	Group 10	Average Velocity
1.25	3.40	2.52	2.52	3.14	3.14	1.25	3.14	79.50		24.4 miles
Total: 100.0 % Vehicle Spec. Power Distribution										
Total: 100.0 % Peak Time Distribution										

VE Model 2.0.2
File Language

International Vehicle Emissions Model

Calculation **Location** **Fuel** **Base Adjustments**

Location: PERONIS S2 A FAG Fleet: 4796 Base Adjustment: none
 Day: 05 Month: December Year: 2019 Day of the week: Thursday Altitude: 20.0 meters IM Class: none
 A/C Use at 27°C (80°F): 50.0% Road Grade: 0.0%

Fuel Characteristics

Gasoline: Overall: moderate/premixed Sulfur (S): moderate (300ppm) Lead (Pb): none Benzene: moderate (1.50%) Oxygenate: 0%
 Diesel: Overall: moderate Sulfur (S): moderate (500ppm)

Hour: 03:00 Use the hour: VSP line: Peak line:

Driving Characteristics

Humidity: 96.7% Distance/Time: 1.0 kilometers Start-ups: 0.0
 Temperature: 77.0°F/25.6°C

Group 1	Group 2	Group 3	Group 4	Group 5	Group 6	Group 7	Group 8	Group 9	Group 10	Average Velocity
1.55	10.44	2.2	2.75	2.2	3.3	1.1	2.2	74.10		26.1 miles
Total: 100.02 % Vehicle Spec. Power Distribution										
Total: 100.0 % Peak Time Distribution										

International Vehicle Emissions Model

Location: PERINTS 50 A SANG, Fleet: <75%, Base Adjustment: none

Day: 05, Month: December, Year: 2019, Day of the week: Thursday, Altitude: 1011.1 meters, IM Class: none

AC Use at 27°C (80°F): 100.0%, Road Grade: 0.0%

Fuel Characteristics: Gasoline: moderate/premixed, Sulfur (S): moderate (300ppm), Lead (Pb): none, Benzene: moderate (1.50%), Oxygenate: 0%

Hour: 8:00, Use this hour: VSP Bin: Sulfur Bin:

Humidity: 63.73%, Temperature: 75.0 Fahrenheit

Distance/Time: 1.000 Miles, Startups: 0.0

Hour	08:00	09:00	10:00	11:00	12:00	13:00	14:00	15:00	16:00	17:00	18:00	Total
Distance (mi)	0.01	26.01	11.37	8.57	5.14	3.27	2.02	2.80	25.20			99.99
Average Velocity (mi/hr)												12.79
Startups												100

Vehicle Spec. Power Distribution: 99.99%
Start Time Distribution: 100.0%

International Vehicle Emissions Model

Location: PERINTS 50 A SANG, Fleet: <75%, Base Adjustment: none

Day: 05, Month: December, Year: 2019, Day of the week: Thursday, Altitude: 1011.1 meters, IM Class: none

AC Use at 27°C (80°F): 50.0%, Road Grade: 0.0%

Fuel Characteristics: Gasoline: moderate/premixed, Sulfur (S): moderate (300ppm), Lead (Pb): none, Benzene: moderate (1.50%), Oxygenate: 0%

Hour: 8:00, Use this hour: VSP Bin: Sulfur Bin:

Humidity: 63.73%, Temperature: 91 Fahrenheit

Distance/Time: 1.000 Miles, Startups: 0.0

Hour	08:00	09:00	10:00	11:00	12:00	13:00	14:00	15:00	16:00	17:00	18:00	Total
Distance (mi)	5.11	25.01	11.37	8.57	5.14	3.27	2.02	2.80	25.20			99.99
Average Velocity (mi/hr)												12.79
Startups												100

Vehicle Spec. Power Distribution: 99.99%
Start Time Distribution: 100.0%

WE Model 2.0.2
File Language

International Vehicle Emissions Model

Calculation Location Fleet Base Adjustments

Location: PERINTS 50 A PAGE
Day: 05, Month: December, Year: 2019
Fleet: <F3k
Day of the week: Thursday, Altitude: 1075.4 meters
Base Adjustment: none
IM Class: none
Road Grade: 0.0 %
A/C Use at 27°C (80°F): 50.0 %

Fuel Characteristics
 Gasoline: Overall: moderate/premixed, Sulfur (S): moderate (300ppm), Lead (Pb): none, Oxygenate: moderate (1.50%), Oxygenate: (S): 0%
 Diesel: Overall: moderate, Sulfur (S): moderate (500ppm)

Hour: 0:00, Use this hour:
 Driving Characteristics: VSP Bin, Soak Bin
 Humidity: 90.74 %, Distance/Time: 5.30 kilometers, Start-ups: 0.0
 Temperature: 77 °Fahrenheit

Group 1	Group 2	Average Velocity														
0-10	10-20	20-30	30-40	40-50	50-60	60-70	70-80	80-90	90-100	100-110	110-120	120-130	130-140	140-150	Total	Vehicle Spec. Power Distribution
0.00	3.43	4.90	0.49	1.47	0.49	1.47	0.25	1.47	0.03						100.0	%
0.00															100.0	%
15 min	30 min	1 hour	2 hours	3 hours	4 hours	6 hours	8 hours	12 hours	16 hours						100.0	%

WE Model 2.0.2
File Language

International Vehicle Emissions Model

Calculation Location Fleet Base Adjustments

Location: PERINTS 50 A 30MAG
Day: 05, Month: December, Year: 2019
Fleet: <F2k
Day of the week: Thursday, Altitude: 751.0 meters
Base Adjustment: none
IM Class: none
Road Grade: 0.0 %
A/C Use at 27°C (80°F): 50.0 %

Fuel Characteristics
 Gasoline: Overall: moderate/premixed, Sulfur (S): moderate (300ppm), Lead (Pb): none, Oxygenate: moderate (1.50%), Oxygenate: (S): 0%
 Diesel: Overall: moderate, Sulfur (S): moderate (500ppm)

Hour: 1:00, Use this hour:
 Driving Characteristics: VSP Bin, Soak Bin
 Humidity: 63.73 %, Distance/Time: 0.30 kilometers, Start-ups: 0.0
 Temperature: 91 °Fahrenheit

Group 1	Group 2	Average Velocity														
0-10	10-20	20-30	30-40	40-50	50-60	60-70	70-80	80-90	90-100	100-110	110-120	120-130	130-140	140-150	Total	Vehicle Spec. Power Distribution
0.00	2.92	4.00	1.95	1.22	0.97	1.22	0.73	0.40	0.04						100.02	%
0.00															100.0	%
15 min	30 min	1 hour	2 hours	3 hours	4 hours	6 hours	8 hours	12 hours	16 hours						100.0	%

IVM Model 2.0.2
File Language

International Vehicle Emissions Model

Calculation Location Fleet Base Adjustments

Location: PERINTS ST A SORE
Day: 05, Month: December, Year: 2019
Fleet: +73%
Day of the week: Thursday
Altitude: 1534.2 meters
Base Adjustment: -slope
IM Class: loose
A/C Use at 27°C (80°F): 50.0%
Road Grade: 0.0%

Fuel Characteristics
Gasoline: Overall: moderate/premixed
Diesel: Overall: moderate
Sulfur (S): moderate (200ppm)
Sulfur (S): moderate (500ppm)
Lead (Pb): none
Benzene: moderate (1.50%)
Oxygenate: 0%

Hour: 15:00
Driving Characteristics: VSP Bin, Suck Bin
Humidity: 90.74%
Temperature: 77 F/25.0 C
Distance/Time: 5.33 kilometers
Start-ups: 0.0

Group 1	Group 2	Group 3	Group 4	Group 5	Group 6	Group 7	Group 8	Group 9	Average Velocity
00:00:00 - 00:00:15	00:00:15 - 00:00:30	00:00:30 - 00:00:45	00:00:45 - 00:01:00	00:01:00 - 00:01:15	00:01:15 - 00:01:30	00:01:30 - 00:01:45	00:01:45 - 00:02:00	00:02:00 - 00:02:15	27.45 km/h
	5.83	8.98	2.43	2.91	1.70	3.88	2.43	1.70	70.15
Total									100.01 % Vehicle Suck Power Distribution
15 min 30 min 1 hour 2 hours 3 hours 4 hours 6 hours 8 hours 12 hours 18 hours									Total
100									100.0 % Suck Time Distribution

IVM Model 2.0.2
File Language

International Vehicle Emissions Model

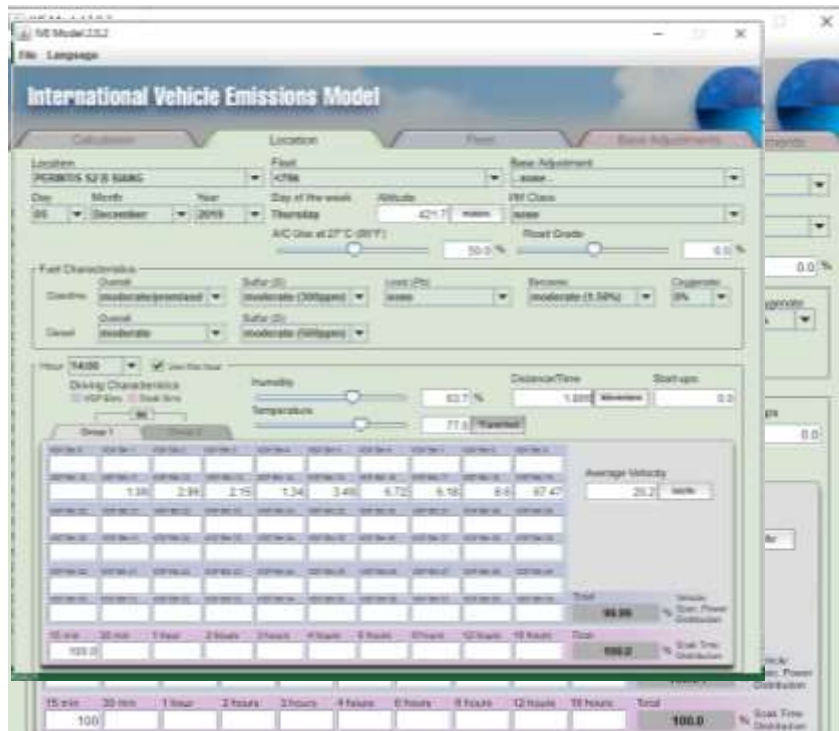
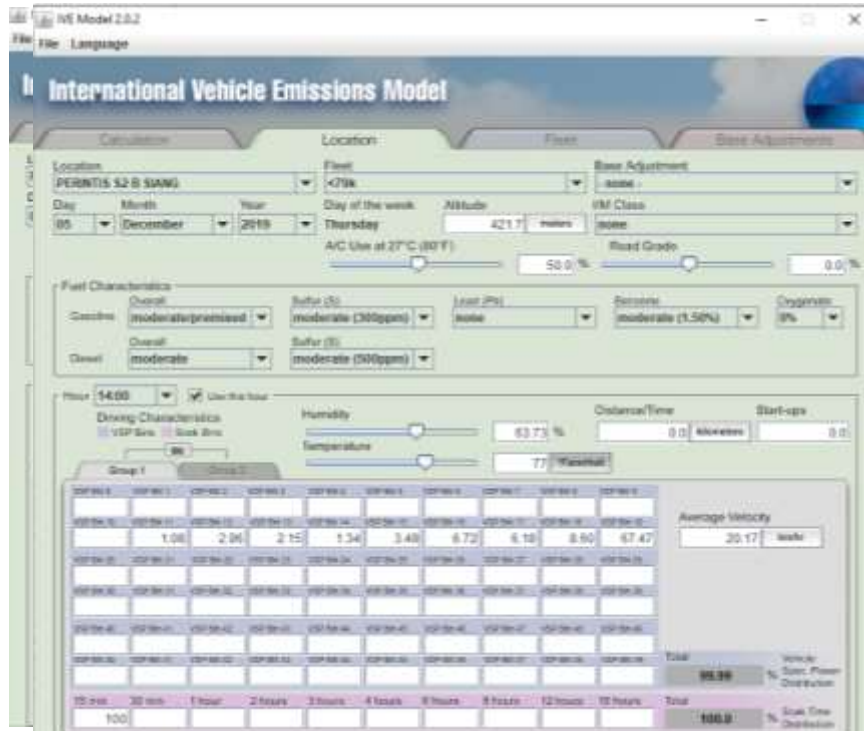
Calculation Location Fleet Base Adjustments

Location: PERINTS ST B SCORE
Day: 05, Month: December, Year: 2019
Fleet: +73%
Day of the week: Thursday
Altitude: 1090.7 meters
Base Adjustment: -slope
IM Class: loose
A/C Use at 27°C (80°F): 50.0%
Road Grade: 0.0%

Fuel Characteristics
Gasoline: Overall: moderate/premixed
Diesel: Overall: moderate
Sulfur (S): moderate (200ppm)
Sulfur (S): moderate (500ppm)
Lead (Pb): none
Benzene: moderate (1.50%)
Oxygenate: 0%

Hour: 16:00
Driving Characteristics: VSP Bin, Suck Bin
Humidity: 90.74%
Temperature: 77 F/25.0 C
Distance/Time: 5.33 kilometers
Start-ups: 0.0

Group 1	Group 2	Group 3	Group 4	Group 5	Group 6	Group 7	Group 8	Group 9	Average Velocity
00:00:00 - 00:00:15	00:00:15 - 00:00:30	00:00:30 - 00:00:45	00:00:45 - 00:01:00	00:01:00 - 00:01:15	00:01:15 - 00:01:30	00:01:30 - 00:01:45	00:01:45 - 00:02:00	00:02:00 - 00:02:15	21.91 km/h
	7.25	11.33	2.96	1.39	2.38	1.99	0.98	1.79	68.88
Total									99.99 % Vehicle Suck Power Distribution
15 min 30 min 1 hour 2 hours 3 hours 4 hours 6 hours 8 hours 12 hours 18 hours									Total
100									100.0 % Suck Time Distribution



NE Model 2.0.2
File Language

International Vehicle Emissions Model

Calculation Location Fuel Base Adjustments

Location: PERKIN S3 B SHAW Feet: 4756 Base Adjustment: none
 Day: 05 Month: December Year: 2019 Day of the week: Thursday Altitude: 300.0 meters V81 Class: none
 AC Use at 27°C (80°F): 50.0% Road Grade: 0.0%

Fuel Characteristics
 Gasoline: Diesel (moderate/premix) Sulfur (S): moderate (500ppm) Lead (Pb): none Romsol: moderate (1.50%) Copperate: 0%
 Diesel: Diesel (moderate) Sulfur (S): moderate (500ppm)

Hour: 14:00 Use the hour
 Driving Characteristics: V81 Rev. 11 Sub Rev. 00
 Humidity: 63.73% Distance/Time: 1.37 kilometers Start-ups: 0.0
 Temperature: 77 Fahrenheit

Group 1	Group 2	Group 3	Group 4	Group 5	Group 6	Group 7	Group 8	Group 9	Group 10	Average Velocity	
1.53	3.07	2.66	1.30	4.50	5.13	4.21	7.00	68.20		16.28 mph	
										Total	
										100.0	Vehicle Dist. Power Distribution
15 min	30 min	1 hour	2 hours	3 hours	4 hours	5 hours	6 hours	8 hours	10 hours	Total	
										100.0	Dist. Time Distribution

NE Model 2.0.2
File Language

International Vehicle Emissions Model

Calculation Location Fuel Base Adjustments

Location: PERKIN S3 B PAIG Feet: 4756 Base Adjustment: none
 Day: 05 Month: December Year: 2019 Day of the week: Thursday Altitude: 300.0 meters V81 Class: none
 AC Use at 27°C (80°F): 50.0% Road Grade: 0.0%

Fuel Characteristics
 Gasoline: Diesel (moderate/premix) Sulfur (S): moderate (500ppm) Lead (Pb): none Romsol: moderate (1.50%) Copperate: 0%
 Diesel: Diesel (moderate) Sulfur (S): moderate (500ppm)

Hour: 14:00 Use the hour
 Driving Characteristics: V81 Rev. 11 Sub Rev. 00
 Humidity: 50.0% Distance/Time: 1.37 kilometers Start-ups: 0.0
 Temperature: 75.2 Fahrenheit

Group 1	Group 2	Group 3	Group 4	Group 5	Group 6	Group 7	Group 8	Group 9	Group 10	Average Velocity	
2.50	8.47	3.00	3.79	3.03	3.03	3.00	3.41	68.58		17.76 mph	
										Total	
										100.0	Vehicle Dist. Power Distribution
15 min	30 min	1 hour	2 hours	3 hours	4 hours	5 hours	6 hours	8 hours	10 hours	Total	
										100.0	Dist. Time Distribution

NE Model 2.02
File Language

International Vehicle Emissions Model

Calculation Location Fleet Base Adjustments

Location: PERNTIS 53 B S0RE
Day: 05 Month: December Year: 2015
Fleet: <79k
Day of the week: Thursday Altitude: 954.7 meters
Base Adjustment: none
IM Class: none
Road Grade: 0.0 %
A/C Use at 27°C (80°F): 50.0 %

Fuel Characteristics
Gasoline Overall: moderate/premixed Sulfur (S): moderate (300ppm) Lead (Pb): none Benzene: moderate (1.50%) Degradate: 0%
Diesel Overall: moderate Sulfur (S): moderate (500ppm)

Hour: 16:00 Use this hour
Driving Characteristics: VSP Bin, Stuck Bin
Humidity: 95.74 % Distance/Time: 1.37 Miles 0.0
Temperature: 77 °F/25.0 °C

Group 1	Group 2	Group 3	Group 4	Group 5	Group 6	Group 7	Group 8	Group 9	Group 10	Average Velocity
0.00-0.20	0.20-0.40	0.40-0.60	0.60-0.80	0.80-1.00	1.00-1.20	1.20-1.40	1.40-1.60	1.60-1.80	1.80-2.00	16.20 mph
2.54	7.25	4.95	5.29	4.05	6.50	5.20	4.20	58.75		
Total										100.0 %

15 min 30 min 1 hour 2 hours 3 hours 4 hours 6 hours 8 hours 12 hours 16 hours
100 % Stuck Time Distribution

NE Model 2.02
File Language

International Vehicle Emissions Model

Calculation Location Fleet Base Adjustments

Location: PERNTIS 54 B PAD
Day: 05 Month: March Year: 2020
Fleet: <79k
Day of the week: Thursday Altitude: 2057.0 meters
Base Adjustment: none
IM Class: none
Road Grade: 0.0 %
A/C Use at 27°C (80°F): 50.0 %

Fuel Characteristics
Gasoline Overall: moderate/premixed Sulfur (S): moderate (300ppm) Lead (Pb): none Benzene: moderate (1.50%) Degradate: 0%
Diesel Overall: moderate Sulfur (S): moderate (500ppm)

Hour: 8:00 Use this hour
Driving Characteristics: VSP Bin, Stuck Bin
Humidity: 95.74 % Distance/Time: 1.125 Miles 0.0
Temperature: 77 °F/25.0 °C

Group 1	Group 2	Group 3	Group 4	Group 5	Group 6	Group 7	Group 8	Group 9	Group 10	Average Velocity
0.00-0.20	0.20-0.40	0.40-0.60	0.60-0.80	0.80-1.00	1.00-1.20	1.20-1.40	1.40-1.60	1.60-1.80	1.80-2.00	22.94 mph
2.20	0.55	2.75	2.75	2.75	3.30	1.95	3.30	80.77		
Total										100.02 %

15 min 30 min 1 hour 2 hours 3 hours 4 hours 6 hours 8 hours 12 hours 16 hours
100 % Stuck Time Distribution

NE Model 2.0.2
File Language

International Vehicle Emissions Model

Calculation Location Fleet Base Adjustments

Location: PERINTIS 54 B SIANG
Day: 07, Month: March, Year: 2020
Fleet: Saturday, Altitude: 500.0 meters
Base Adjustment: none, IM Class: none
AC Use at 27°C (80°F): 50.0%, Road Grade: 0.0%

Fuel Characteristics
Gasoline: Overall: moderate/premixed, Sulfur (S): moderate (300ppm), Lead (Pb): none, Benzene: moderate (1.50%), Oxygenate: 0%
Diesel: Overall: moderate, Sulfur (S): moderate (500ppm)

Hour: 0:00, Use this hour:
Driving Characteristics: VSP Box, Sunk Box
Humidity: 63.73%, Temperature: 77.0 Fahrenheit
Distance/Time: 1.125 Miles, Start-ups: 0.0

Group 1	Group 2	Group 3	Group 4	Group 5	Group 6	Group 7	Group 8	Group 9	Group 10	Average Velocity
0.20	0.55	2.75	2.75	2.75	3.30	1.65	3.30	80.77		22.94 km/h
Total: 100.02 % Vehicle Spec. Power Distribution										
Total: 100.0 % Sunk Time Distribution										

NE Model 2.0.2
File Language

International Vehicle Emissions Model

Calculation Location Fleet Base Adjustments

Location: PERINTIS 54 B SIANG
Day: 07, Month: March, Year: 2020
Fleet: Saturday, Altitude: 344.22 meters
Base Adjustment: none, IM Class: none
AC Use at 27°C (80°F): 50.0%, Road Grade: 0.0%

Fuel Characteristics
Gasoline: Overall: moderate/premixed, Sulfur (S): moderate (300ppm), Lead (Pb): none, Benzene: moderate (1.50%), Oxygenate: 0%
Diesel: Overall: moderate, Sulfur (S): moderate (500ppm)

Hour: 0:00, Use this hour:
Driving Characteristics: VSP Box, Sunk Box
Humidity: 63.73%, Temperature: 77.0 Fahrenheit
Distance/Time: 1.125 Miles, Start-ups: 0.0

Group 1	Group 2	Group 3	Group 4	Group 5	Group 6	Group 7	Group 8	Group 9	Group 10	Average Velocity
0.20	0.55	2.75	2.75	2.75	3.30	1.65	3.30	80.77		22.94 km/h
Total: 100.02 % Vehicle Spec. Power Distribution										
Total: 100.0 % Sunk Time Distribution										

VE Model 2.0.2
File Language

International Vehicle Emissions Model

Calculation Location Fleet Base Adjustments

Location: PERINTS 55 B SIAMG Fleet: v79k Base Adjustment: none

Day: 05 Month: December Year: 2019 Day of the week: Thursday Altitude: 215.4 meters IM Class: none

A/C Use at 27°C (80°F): 50.2% Road Grade: 0.0%

Fuel Characteristics

Control: moderate/premixed Sulfur (S): moderate (300ppm) Lead (Pb): none Sulfur (S): moderate (1.50%) Oxygenate: 0%

Control: moderate Sulfur (S): moderate (300ppm)

Hour: 14:00 Use the hour: VSP Run: Road Run: Humidity: 63.7% Distance/Time: 1.620 kilometers Start-ups: 0.0

Driving Characteristics: 90 Temperature: 75.2 Fahrenheit

Group 1	Group 2	Group 3	Group 4	Group 5	Group 6	Group 7	Group 8	Group 9	Group 10	Average Velocity
1.57	4.70	10.03	23.20	10.34	7.21	2.51	2.10	38.24		14.45 km/hr
										Total: 90.90 % Vehicle Spec Power Distribution
35 min	30 min	1 hour	2 hours	3 hours	4 hours	8 hours	3 hours	12 hours	30 hours	Total: 100.0 % Fuel Time Distribution
										100 % Distribution

VE Model 2.0.2
File Language

International Vehicle Emissions Model

Calculation Location Fleet Base Adjustments

Location: PERINTS 55 B SCORE Fleet: v79k Base Adjustment: none

Day: 05 Month: December Year: 2019 Day of the week: Thursday Altitude: 515.9 meters IM Class: none

A/C Use at 27°C (80°F): 50.0% Road Grade: 0.0%

Fuel Characteristics

Control: moderate/premixed Sulfur (S): moderate (300ppm) Lead (Pb): none Sulfur (S): moderate (1.50%) Oxygenate: 0%

Control: moderate Sulfur (S): moderate (300ppm)

Hour: 16:00 Use the hour: VSP Run: Road Run: Humidity: 66.7% Distance/Time: 1.620 kilometers Start-ups: 0.0

Driving Characteristics: 90 Temperature: 77 Fahrenheit

Group 1	Group 2	Group 3	Group 4	Group 5	Group 6	Group 7	Group 8	Group 9	Group 10	Average Velocity
2.11	1.27	2.11	2.11	5.40	5.91	5.91	2.90	72.10		19.82 km/hr
										Total: 100.01 % Vehicle Spec Power Distribution
35 min	30 min	1 hour	2 hours	3 hours	4 hours	8 hours	3 hours	12 hours	30 hours	Total: 100.0 % Fuel Time Distribution
										100 % Distribution

International Vehicle Emissions Model

Location: PERINTIS MA A SONE, Fleet: +79k, Base Adjustment: none

Day: 05, Month: December, Year: 2019, Day of the week: Thursday, Altitude: 9734.2 meters, I/M Class: none

AC Use at 27°C (80°F): 50.0%, Road Grade: 0.0%

Fuel Characteristics: Overall: moderate/premixed, Sulfur (S): moderate (300ppm), Lead (Pb): none, Benzene: moderate (1.50%), Oxygenate: 0%

Driving Characteristics: Year: 18000, Use this hour: VSP data, Seek data, Humidity: 95.74%, Distance/Time: 1.736 kilometers, Start-ups: 0.0

Group 1	Group 2	Average Velocity										
0-10 km/h	10-20 km/h	0-10 km/h	10-20 km/h	20-30 km/h	30-40 km/h	40-50 km/h	50-60 km/h	60-70 km/h	70-80 km/h	80-90 km/h	90-100 km/h	Total
3.03	4.80	4.43	5.77	7.09	5.58	4.43	3.72	19.44				18.33 km/h
Total: 100.0 % Vehicle Start Power Distribution												
Total: 100.0 % Seek Time Distribution												

International Vehicle Emissions Model

Location: PERINTIS MA B SIANG, Fleet: +79k, Base Adjustment: none

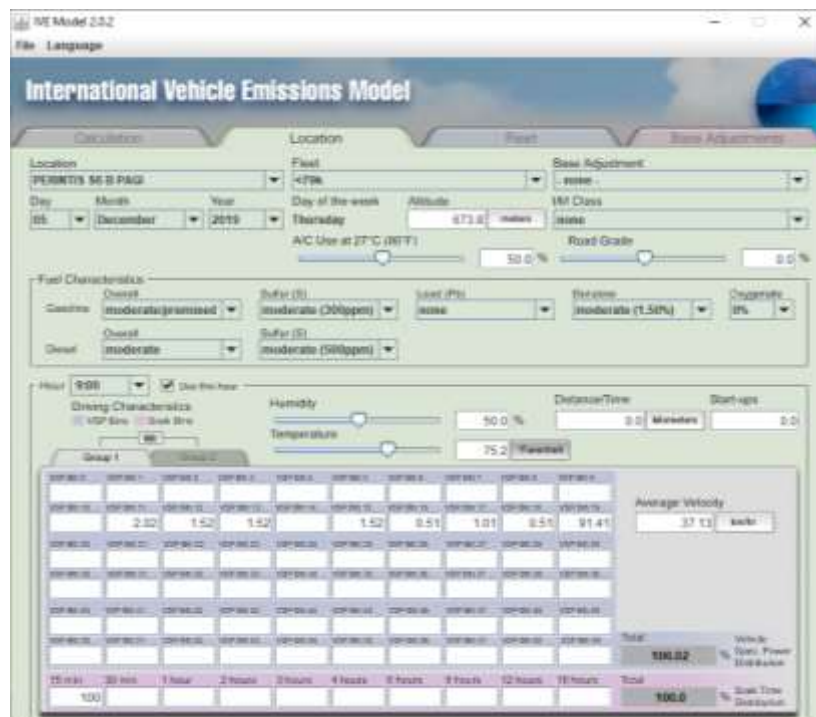
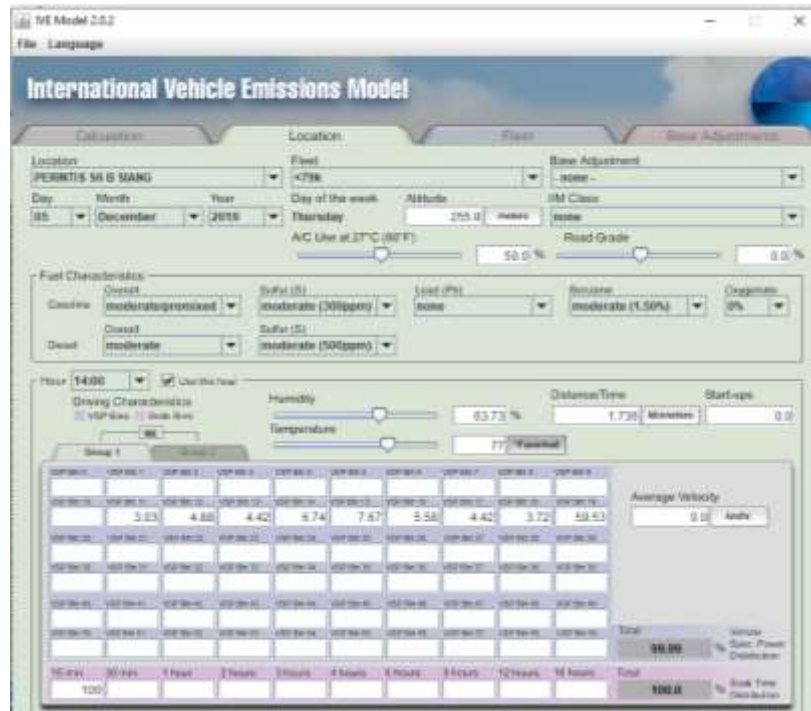
Month: December, Year: 2019, Day of the week: Thursday, Altitude: 255.0 meters, I/M Class: none

AC Use at 27°C (80°F): 50.0%, Road Grade: 0.0%

Fuel Characteristics: Overall: moderate/premixed, Sulfur (S): moderate (300ppm), Lead (Pb): none, Benzene: moderate (1.50%), Oxygenate: 0%

Driving Characteristics: Year: 14500, Use this hour: VSP data, Seek data, Humidity: 63.73%, Distance/Time: 1.736 kilometers, Start-ups: 0.0

Group 1	Group 2	Average Velocity										
0-10 km/h	10-20 km/h	0-10 km/h	10-20 km/h	20-30 km/h	30-40 km/h	40-50 km/h	50-60 km/h	60-70 km/h	70-80 km/h	80-90 km/h	90-100 km/h	Total
3.03	4.80	4.42	6.74	7.67	5.58	4.42	3.72	59.53				0.0 km/h
Total: 99.99 % Vehicle Start Power Distribution												
Total: 100.0 % Seek Time Distribution												



Lampiran 6: Tampilan tab Calculation

International Vehicle Emissions Model

Location: PERINTIS S1 A SIANG (<79k)

Available Locations:

- MASJID RAYA SEGMENT 3 SORE (<79k)
- MASJID RAYA SEGMENT 3 SIANG (<79k)
- PERINTIS S1 A PAGI (<79k)
- PERINTIS S1 A SORE (<79k)
- PERINTIS S1 B PAGI (<79k)
- PERINTIS S1 B SIANG (<79k)
- PERINTIS S1 B SORE (<79k)
- PERINTIS S2 A PAGI (<79k)
- PERINTIS S2 A SIANG (<79k)
- PERINTIS S2 A SORE (<79k)

Display Hour: 13:00 | Display Unit: grams

Distance/Time: 1.7 km | Start-ups: 0.0

	CO	VOC	VOC mix	NO _x	PM
Start-up Hour	0.0			0.0	0.0
Running Hour	80.29			2.99	0.22
Total Hour	80.29			2.99	0.22
Start-up Day					
Running Day					
Total Day					

International Vehicle Emissions Model

Location: PERINTIS S1 A SORE (<79k)

Available Locations:

- MASJID RAYA SEGMENT 3 SORE (<79k)
- MASJID RAYA SEGMENT 3 SIANG (<79k)
- PERINTIS S1 A PAGI (<79k)
- PERINTIS S1 A SIANG (<79k)
- PERINTIS S1 B PAGI (<79k)
- PERINTIS S1 B SIANG (<79k)
- PERINTIS S1 B SORE (<79k)
- PERINTIS S2 A PAGI (<79k)
- PERINTIS S2 A SIANG (<79k)
- PERINTIS S2 A SORE (<79k)

Display Hour: 15:00 | Display Unit: grams

Distance/Time: 1.7 km | Start-ups: 0.0

	CO	VOC	VOC mix	NO _x	PM
Start-up Hour	0.0			0.0	0.0
Running Hour	88.0			2.97	0.21
Total Hour	88.0			2.97	0.21
Start-up Day					
Running Day					
Total Day					

International Vehicle Emissions Model

Location: PERINTIS S1 A SIANG (-479k)

Available Locations:

- MASJID RAYA SEGEMEN 3 SORE (-479k)
- MASJID RAYA SEGEMEN 3 SIANG (-479k)
- PERINTIS S1 A PAGI (-479k)
- PERINTIS S1 A PAGI (-479k)
- PERINTIS S1 A SORE (-479k)
- PERINTIS S1 B PAGI (-479k)
- PERINTIS S1 B SIANG (-479k)
- PERINTIS S1 B SORE (-479k)
- PERINTIS S2 A PAGI (-479k)
- PERINTIS S2 A SIANG (-479k)
- PERINTIS S2 A SORE (-479k)

Display Hour: 13:00 | Display Units: grams

Distance/Time: 1.7 km | Start-ups: 0.0

	CO	VOC	VOC eqv	NO _x	SO _x	PM
Start-up Hour	0.0			0.0	0.0	
Running Hour	66.25			2.05	0.22	
Total Hour	66.25			2.05	0.22	
Start-up Day						
Running Day						
Total Day						

International Vehicle Emissions Model

Location: PERINTIS S2 A PAGI (-479k)

Available Locations:

- MASJID RAYA SEGEMEN 3 SORE (-479k)
- MASJID RAYA SEGEMEN 3 SIANG (-479k)
- PERINTIS S1 A PAGI (-479k)
- PERINTIS S1 A PAGI (-479k)
- PERINTIS S1 A SIANG (-479k)
- PERINTIS S1 A SORE (-479k)
- PERINTIS S1 B PAGI (-479k)
- PERINTIS S1 B SIANG (-479k)
- PERINTIS S1 B SORE (-479k)
- PERINTIS S2 A SIANG (-479k)
- PERINTIS S2 A SORE (-479k)

Display Hour: 8:00 | Display Units: grams

Distance/Time: 1.6 km | Start-ups: 0.0

	CO	VOC	VOC eqv	NO _x	SO _x	PM
Start-up Hour	0.0			0.0	0.0	
Running Hour	56.8			2.45	0.19	
Total Hour	56.8			2.45	0.19	
Start-up Day						
Running Day						
Total Day						

WE Model 2.0.2
File Language

International Vehicle Emissions Model

Calculation Location Fleet Basic Adjustments

Location Group: PERINTIS S2 A SIANG

Calculate Locations: PERINTIS S2 A SIANG (+79k)

Available Locations:

- MASJID RAYA SEGEMEN 3 SORE (+79k)
- MASJID RAYA SEGEMEN 3 SIANG (+79k)
- PERINTIS S1 A PAGI (+79k)
- PERINTIS S1 A PAGI (+79k)
- PERINTIS S1 A SIANG (+79k)
- PERINTIS S1 A SORE (+79k)
- PERINTIS S1 B PAGI (+79k)
- PERINTIS S1 B SIANG (+79k)
- PERINTIS S1 B SORE (+79k)
- PERINTIS S2 A PAGI (+79k)
- PERINTIS S2 A SORE (+79k)

Display Hour: 13:00 Display Units: grams

Calculate One Hour Calculate One Day

Distance/Time: 1.0 km Start-ups: 0.0

Results

	CO	VOC	VOC eqiv	NO _x	SO _x	PM
Start-up Hour	0.0			0.0	0.0	
Running Hour	76.25			3.55	0.22	
Total Hour	76.25			3.55	0.22	
Start-up Day						
Running Day						
Total Day						

WE Model 2.0.2
File Language

International Vehicle Emissions Model

Calculation Location Fleet Basic Adjustments

Location Group: PERINTIS S2 A SORE

Calculate Locations: PERINTIS S2 A SORE (+79k)

Available Locations:

- PERINTIS S1 A PAGI (+79k)
- PERINTIS S1 A PAGI (+79k)
- PERINTIS S1 A SIANG (+79k)
- PERINTIS S1 A SORE (+79k)
- PERINTIS S1 B PAGI (+79k)
- PERINTIS S1 B SIANG (+79k)
- PERINTIS S1 B SORE (+79k)
- PERINTIS S2 A PAGI (+79k)
- PERINTIS S2 A SIANG (+79k)
- PERINTIS S2 A SORE (+79k)
- PERINTIS S2 B PAGI (+79k)

Display Hour: 15:00 Display Units: grams

Calculate One Hour Calculate One Day

Distance/Time: 1.0 km Start-ups: 0.0

Results

	CO	VOC	VOC eqiv	NO _x	SO _x	PM
Start-up Hour	0.0			0.0	0.0	
Running Hour	66.12			3.06	0.22	
Total Hour	66.12			3.06	0.22	
Start-up Day						
Running Day						
Total Day						

International Vehicle Emissions Model

Location Group: PERINTIS S3 A PAGI

Calculate Locations: PERINTIS S3 A PAGI (<79k)

Available Locations: PERINTIS S2 A SORE (<79k), PERINTIS S2 A SORE (<79k), PERINTIS S2 B PAGI (<79k), PERINTIS S2 B SIANG (<79k), PERINTIS S2 B SORE (<79k), PERINTIS S3 A SIANG (<79k), PERINTIS S3 A SORE (<79k), PERINTIS S3 B SIANG (<79k), PERINTIS S3 B SORE (<79k), PERINTIS S3 B PAGI (<79k), PERINTIS S4 A PAGI (<79k)

Display Hour: 8:00, Display Units: grams

Distance/Time: 1.1 km, Start-ups: 0.0

Results	CO	VOC	VOC eqs	NO _x	SO _x	PW
Start-up Hour	0.0			0.0	0.0	
Running Hour	36.1			1.45	0.1	
Total Hour	36.1			1.45	0.1	
Start-up Day						
Running Day						
Total Day						

International Vehicle Emissions Model

Location Group: PERINTIS S3 A SIANG

Calculate Locations: PERINTIS S3 A SIANG (<79k)

Available Locations: PERINTIS S2 A SORE (<79k), PERINTIS S2 A SORE (<79k), PERINTIS S2 B PAGI (<79k), PERINTIS S2 B SIANG (<79k), PERINTIS S2 B SORE (<79k), PERINTIS S3 A PAGI (<79k), PERINTIS S3 A SORE (<79k), PERINTIS S3 B SIANG (<79k), PERINTIS S3 B SORE (<79k), PERINTIS S3 B PAGI (<79k), PERINTIS S4 A PAGI (<79k)

Display Hour: 13:00, Display Units: grams

Distance/Time: 1.1 km, Start-ups: 0.0

Results	CO	VOC	VOC eqs	NO _x	SO _x	PW
Start-up Hour	0.0			0.0	0.0	
Running Hour	42.34			1.83	0.11	
Total Hour	42.34			1.83	0.11	
Start-up Day						
Running Day						
Total Day						

IVE Model 2.0.2
File Language

International Vehicle Emissions Model

Calculation Location Fleet Base Adjustments

Location Group: PERINTIS S3 A SORE

Calculate Locations: PERINTIS S3 A SORE (<79k)

Available Locations: PERINTIS S2 A SORE (<79k), PERINTIS S2 B SORE (<79k), PERINTIS S2 B PAGI (<79k), PERINTIS S2 B SIANG (<79k), PERINTIS S2 B SORE (<79k), PERINTIS S3 A PAGI (<79k), PERINTIS S3 A SIANG (<79k), PERINTIS S3 B SIANG (<79k), PERINTIS S3 B SORE (<79k), PERINTIS S3 B PAGI (<79k), PERINTIS S4 A PAGI (<79k)

Calculate One Hour
Calculate One Day

Display Hour: 1500 Display Units: grams

Distance/Time: 1.1 km Start-ups: 0.0

Criteria	CO	VOC	VOC exp.	NO _x	SO _x	PM
Start-up Hour	0.0			0.0	0.0	
Running Hour	37.99			1.83	0.13	
Total Hour	37.99			1.83	0.13	
Start-up Day						
Running Day						
Total Day						

IVE Model 2.0.2
File Language

International Vehicle Emissions Model

Calculation Location Fleet Base Adjustments

Location Group: PERINTIS S4 A PAGI

Calculate Locations: PERINTIS S4 A PAGI (<79k)

Available Locations: PERINTIS S2 B SIANG (<79k), PERINTIS S2 B SORE (<79k), PERINTIS S3 A PAGI (<79k), PERINTIS S3 A SIANG (<79k), PERINTIS S3 A SORE (<79k), PERINTIS S3 B SIANG (<79k), PERINTIS S3 B SORE (<79k), PERINTIS S3 B PAGI (<79k), PERINTIS S4 A SIANG (<79k), PERINTIS S4 A SORE (<79k), PERINTIS S4 B PAGI (<79k)

Calculate One Hour
Calculate One Day

Display Hour: 800 Display Units: grams

Distance/Time: 1.4 km Start-ups: 0.0

Criteria	CO	VOC	VOC exp.	NO _x	SO _x	PM
Start-up Hour	0.0			0.0	0.0	
Running Hour	52.11			2.58	0.18	
Total Hour	52.11			2.58	0.18	
Start-up Day						
Running Day						
Total Day						

International Vehicle Emissions Model

Location Group: PERINTIS 54 A SANG

Calculate Locations: PERINTIS 54 A SANG (+79k)

Available Locations: PERINTIS 52 B SANG (+79k), PERINTIS 52 B SORE (+79k), PERINTIS 53 A PAGI (+79k), PERINTIS 53 A SANG (+79k), PERINTIS 53 A SORE (+79k), PERINTIS 53 B SANG (+79k), PERINTIS 53 B SORE (+79k), PERINTIS 53 B PAGI (+79k), PERINTIS 54 A PAGI (+79k), PERINTIS 54 A SORE (+79k), PERINTIS 54 B PAGI (+79k)

Display Hour: 13:00 | Display Units: grams

Distance/Time: 1.4 km | Start-ups: 0.0

Results	CO	VOC	VOC eq	NO _x	PM
Start-up Hour	0.0			0.0	0.0
Running Hour	42.53			3.08	0.19
Total Hour	42.53			3.08	0.19
Start-up Day					
Running Day					
Total Day					

International Vehicle Emissions Model

Location Group: PERINTIS 54 A SORE

Calculate Locations: PERINTIS 54 A SORE (+79k)

Available Locations: PERINTIS 52 B SANG (+79k), PERINTIS 52 B SORE (+79k), PERINTIS 53 A PAGI (+79k), PERINTIS 53 A SANG (+79k), PERINTIS 53 A SORE (+79k), PERINTIS 53 B SANG (+79k), PERINTIS 53 B SORE (+79k), PERINTIS 53 B PAGI (+79k), PERINTIS 54 A PAGI (+79k), PERINTIS 54 A SANG (+79k), PERINTIS 54 B PAGI (+79k)

Display Hour: 13:00 | Display Units: grams

Distance/Time: 1.4 km | Start-ups: 0.0

Results	CO	VOC	VOC eq	NO _x	PM
Start-up Hour	0.0			0.0	0.0
Running Hour	53.27			2.88	0.2
Total Hour	53.27			2.88	0.2
Start-up Day					
Running Day					
Total Day					

International Vehicle Emissions Model

Location Group: PERINTIS S3 A PAGI (-79k)

Calculate Locations: PERINTIS S3 A PAGI (-79k)

Available Locations:

- PERINTIS S3 B SIANG (-79k)
- PERINTIS S3 B SORE (-79k)
- PERINTIS S3 B PAGI (-79k)
- PERINTIS S4 A PAGI (-79k)
- PERINTIS S4 A SIANG (-79k)
- PERINTIS S4 A SORE (-79k)
- PERINTIS S4 B PAGI (-79k)
- PERINTIS S5 B SIANG (-79k)
- PERINTIS S5 B SORE (-79k)
- PERINTIS S5 B PAGI (-79k)
- PERINTIS S6 A SORE (-79k)

Display Hour: 8:00 | Display Units: grams

Distance/Time: 1.0 km | Start-ups: 0.0

Results	CO	VOC	VOC eq	NO _x	SO _x	PM
Start-up Hour	0.0			0.0	0.0	
Running Hour	81.84			2.99	0.21	
Total Hour	81.84			2.99	0.21	
Start-up Day						
Running Day						
Total Day						

International Vehicle Emissions Model

Location Group: PERINTIS S5 A SIANG

Calculate Locations: PERINTIS S5 A SIANG (-79k)

Available Locations:

- PERINTIS S5 B SORE (-79k)
- PERINTIS S5 B PAGI (-79k)
- PERINTIS S6 A SORE (-79k)
- PERINTIS S6 B PAGI (-79k)
- PERINTIS S6 B SIANG (-79k)
- PERINTIS S6 B SORE (-79k)
- PERINTIS S6 A PAGI (-79k)
- PERINTIS S6 A SIANG (-79k)
- PERINTIS S5 A SORE (-79k)
- REURANE S1 A PAGI (-79k)
- REURANE S2 B PAGI (-79k)

Display Hour: 13:00 | Display Units: grams

Distance/Time: 1.0 km | Start-ups: 0.0

Results	CO	VOC	VOC eq	NO _x	SO _x	PM
Start-up Hour	0.0			0.0	0.0	
Running Hour	75.34			4.0	0.28	
Total Hour	75.34			4.0	0.28	
Start-up Day						
Running Day						
Total Day						

WE Model 2.0.2
File Language

International Vehicle Emissions Model

Calculation Location Fuel Base Adjustments

Location Group: PERINTS 55 A SORE

Calculate Locations: PERINTS 55 A SORE (-79k)

Available Locations:

- PERINTS 55 B SORE (-79k)
- PERINTS 55 B PAGI (-79k)
- PERINTS 56 A SORE (-79k)
- PERINTS 56 B PAGI (-79k)
- PERINTS 56 B SIANG (-79k)
- PERINTS 56 B SORE (-79k)
- PERINTS 56 A PAGI (-79k)
- PERINTS 55 A SIANG (-79k)
- PERINTS 56 A SIANG (-79k)
- RIKURANE 51 A PAGI (-79k)
- RIKURANE 52 B PAGI (-79k)

Display Hour: 1600 Display Units: grams

Distance/Time: 1.0 km Start-up: 0.0

Calculate One Hour
Calculate One Day

Results:

	CO	VOC	VOC eq	NO _x	SO _x	PM
Start-up Hour	0.0			0.0	0.0	
Running Hour	64.75			3.11	0.22	
Total Hour	64.75			3.11	0.22	
Start-up Day						
Running Day						
Total Day						

WE Model 2.0.2
File Language

International Vehicle Emissions Model

Calculation Location Fuel Base Adjustments

Location Group: PERINTS 56 A PAGI

Calculate Locations: PERINTS 56 A PAGI (-79k)

Available Locations:

- PERINTS 56 A SORE (-79k)
- PERINTS 56 B PAGI (-79k)
- PERINTS 56 B SIANG (-79k)
- PERINTS 56 B SORE (-79k)
- PERINTS 55 A SIANG (-79k)
- PERINTS 56 A SIANG (-79k)
- PERINTS 55 A SORE (-79k)
- RIKURANE 51 A PAGI (-79k)
- RIKURANE 52 B PAGI (-79k)
- RIKURANE 52 B SIANG (-79k)
- RIKURANE 51 A SIANG (-79k)

Display Hour: 800 Display Units: grams

Distance/Time: 5.6 km Start-up: 0.0

Calculate One Hour
Calculate One Day

Results:

	CO	VOC	VOC eq	NO _x	SO _x	PM
Start-up Hour	0.0			0.0	0.0	
Running Hour	185.14			8.84	0.61	
Total Hour	185.14			8.84	0.61	
Start-up Day						
Running Day						
Total Day						

IE Model 2.0.2
File Language

International Vehicle Emissions Model

Calculation Location Fuel Basic Adjustments

Location Group: PERMITS S1 A SANG

Calculate Locations: PERMITS S1 A SANG (+79K)

Available Locations: PERMITS S1 A SCORE (+79K), PERMITS S1 B PAGI (+79K), PERMITS S1 B SANG (+79K), PERMITS S1 B SCORE (+79K), PERMITS S1 A PAGI (+79K), PERMITS S1 A SANG (+79K), PERMITS S1 A SCORE (+79K), RIBURANE S1 A PAGI (+79K), RIBURANE S2 B PAGI (+79K), RIBURANE S2 B SANG (+79K), RIBURANE S1 A SANG (+79K)

Calculate One Hour Calculate One Day

Display Hour: 13:00 Display Units: grams

Distance/Time: 5.4 km Start-ups: 0.0

Results

	CO	VOC	VOC eq	NO _x	SO _x	PM
Start-up Hour	0.0			0.0	0.0	
Running Hour	297.83			0.2	0.56	
Total Hour	297.83			0.2	0.56	
Start-up Day						
Running Day						
Total Day						

IE Model 2.0.2
File Language

International Vehicle Emissions Model

Calculation Location Fuel Basic Adjustments

Location Group: PERMITS S1 A SCORE

Calculate Locations: PERMITS S1 A SCORE (+79K)

Available Locations: PERMITS S1 B PAGI (+79K), PERMITS S1 B SANG (+79K), PERMITS S1 B SCORE (+79K), PERMITS S1 A PAGI (+79K), PERMITS S1 A SANG (+79K), PERMITS S1 A SCORE (+79K), RIBURANE S1 A PAGI (+79K), RIBURANE S2 B PAGI (+79K), RIBURANE S2 B SANG (+79K), RIBURANE S1 A SANG (+79K)

Calculate One Hour Calculate One Day

Display Hour: 15:00 Display Units: grams

Distance/Time: 5.4 km Start-ups: 0.0

Results

	CO	VOC	VOC eq	NO _x	SO _x	PM
Start-up Hour	0.0			0.0	0.0	
Running Hour	148.52			1.53	0.54	
Total Hour	148.52			1.53	0.54	
Start-up Day						
Running Day						
Total Day						

IV Model 2.0.2
File Language

International Vehicle Emissions Model

Calculation Location Fleet Basic Adjustments

Location Group: PERNTIS S1 B SIANG

Calculate Locations: PERNTIS S1 B SIANG (+79k)

Available Locations: PERNTIS S1 A PAGI (+79k), PERNTIS S1 A PAIG (+79k), PERNTIS S1 A SIANG (+79k), PERNTIS S1 A SORE (+79k), PERNTIS S1 B PAGI (+79k), PERNTIS S1 B SORE (+79k), PERNTIS S2 A PAGI (+79k), PERNTIS S2 A SIANG (+79k), PERNTIS S2 A SORE (+79k), PERNTIS S2 B PAGI (+79k)

Calculate One Hour Calculate One Day

Display Hour: 13:00 Display Units: grams

Distance/Time: 5.4 km Start-ups: 0.0

Results

	CO	VOC	VOC emp	NO _x	NO ₂	PM
Start-up Hour	0.0			0.0	0.0	
Running Hour	179.39			11.73	0.73	
Total Hour	179.39			11.73	0.73	
Start-up Day						
Running Day						
Total Day						

IV Model 2.0.2
File Language

International Vehicle Emissions Model

Calculation Location Fleet Basic Adjustments

Location Group: PERNTIS S1 B SORE

Calculate Locations: PERNTIS S1 B SORE (+79k)

Available Locations: PERNTIS S1 A PAGI (+79k), PERNTIS S1 A PAIG (+79k), PERNTIS S1 A SIANG (+79k), PERNTIS S1 A SORE (+79k), PERNTIS S1 B PAGI (+79k), PERNTIS S1 B SIANG (+79k), PERNTIS S2 A PAGI (+79k), PERNTIS S2 A SIANG (+79k), PERNTIS S2 A SORE (+79k), PERNTIS S2 B PAGI (+79k)

Calculate One Hour Calculate One Day

Display Hour: 13:00 Display Units: grams

Distance/Time: 1.0 km Start-ups: 0.0

Results

	CO	VOC	VOC emp	NO _x	NO ₂	PM
Start-up Hour	0.0			0.0	0.0	
Running Hour	59.88			3.07	0.22	
Total Hour	59.88			3.07	0.22	
Start-up Day						
Running Day						
Total Day						

WE Model 2.0.2
File Language

International Vehicle Emissions Model

Calculation Location Fuel Base Adjustments

Location Group: PERINTS S2 B PAGI

Calculate Locations: PERINTS S2 B PAGI (+79k)

Available Locations:

- PERINTS S1 A SANG (+79k)
- PERINTS S1 A SORE (+79k)
- PERINTS S1 B PAGI (+79k)
- PERINTS S1 B SANG (+79k)
- PERINTS S1 B SORE (+79k)
- PERINTS S2 A PAGI (+79k)
- PERINTS S2 A SANG (+79k)
- PERINTS S2 A SORE (+79k)
- PERINTS S2 B SORE
- PERINTS S2 B SANG (+79k)
- PERINTS S2 B SORE (+79k)

Buttons: Add, Remove

Calculate One Hour
Calculate One Day

Display Hour: 8:00
Display Units: grams

Distance/Time: 1.0 km
Start-ups: 0.0

Results Table:

	CO	VOC	VOC eqwt	NOx	PM
Start-up Hour	0.0			0.0	0.0
Running Hour	62.05			3.87	0.25
Total Hour	62.05			3.87	0.25
Start-up Day					
Running Day					
Total Day					

WE Model 2.0.2
File Language

International Vehicle Emissions Model

Calculation Location Fuel Base Adjustments

Location Group: PERINTS S2 B SANG

Calculate Locations: PERINTS S2 B SANG (+79k)

Available Locations:

- PERINTS S1 A SANG (+79k)
- PERINTS S1 A SORE (+79k)
- PERINTS S1 B PAGI (+79k)
- PERINTS S1 B SANG (+79k)
- PERINTS S1 B SORE (+79k)
- PERINTS S2 A PAGI (+79k)
- PERINTS S2 A SANG (+79k)
- PERINTS S2 A SORE (+79k)
- PERINTS S2 B SORE
- PERINTS S2 B PAGI (+79k)
- PERINTS S2 B SORE (+79k)

Buttons: Add, Remove

Calculate One Hour
Calculate One Day

Display Hour: 14:00
Display Units: grams

Distance/Time: 1.0 km
Start-ups: 0.0

Results Table:

	CO	VOC	VOC eqwt	NOx	PM
Start-up Hour	0.0			0.0	0.0
Running Hour	67.75			4.2	0.27
Total Hour	67.75			4.2	0.27
Start-up Day					
Running Day					
Total Day					

IVEM Model 2.0.2
File Language

International Vehicle Emissions Model

Calculation Location Fleet Base Adjustments

Location Group: PERINTIS S2 B SORE

Calculate Locations: PERINTIS S2 B SORE (+79k)

Available Locations:

- PERINTIS S1 A SORE (+79k)
- PERINTIS S1 B PAGI (+79k)
- PERINTIS S1 B SIANG (+79k)
- PERINTIS S1 B SORE (+79k)
- PERINTIS S2 A PAGI (+79k)
- PERINTIS S2 A SIANG (+79k)
- PERINTIS S2 A SORE (+79k)
- PERINTIS S2 B PAGI (+79k)
- PERINTIS S2 B SIANG (+79k)
- PERINTIS S3 A PAGI (+79k)

Buttons: Add, Remove

Calculate One Hour
Calculate One Day

Display Hour: 18:00
Display Units: grams

Distance/Time: 1.9 km
Start-up: 0.0

Results Table:

	<input checked="" type="checkbox"/> CO	<input checked="" type="checkbox"/> VOC	<input checked="" type="checkbox"/> VOC ewe	<input checked="" type="checkbox"/> NO _x	<input checked="" type="checkbox"/> SO _x	<input checked="" type="checkbox"/> PM
Start-up Hour	0.0			0.0	0.0	
Running Hour	67.81			3.3	0.25	
Total Hour	67.81			3.3	0.25	
Start-up Day						
Running Day						
Total Day						

IVEM Model 2.0.2
File Language

International Vehicle Emissions Model

Calculation Location Fleet Base Adjustments

Location Group: PERINTIS S3 B PAGI

Calculate Locations: PERINTIS S3 B PAGI (+79k)

Available Locations:

- PERINTIS S2 A SORE (+79k)
- PERINTIS S2 A SORE (+79k)
- PERINTIS S2 B PAGI (+79k)
- PERINTIS S2 B SIANG (+79k)
- PERINTIS S2 B SORE (+79k)
- PERINTIS S3 A PAGI (+79k)
- PERINTIS S3 A SIANG (+79k)
- PERINTIS S3 A SORE (+79k)
- PERINTIS S3 B SIANG (+79k)
- PERINTIS S3 B SORE (+79k)
- PERINTIS S4 A PAGI (+79k)

Buttons: Add, Remove

Calculate One Hour
Calculate One Day

Display Hour: 9:00
Display Units: grams

Distance/Time: 1.4 km
Start-up: 0.0

Results Table:

	<input checked="" type="checkbox"/> CO	<input checked="" type="checkbox"/> VOC	<input checked="" type="checkbox"/> VOC ewe	<input checked="" type="checkbox"/> NO _x	<input checked="" type="checkbox"/> SO _x	<input checked="" type="checkbox"/> PM
Start-up Hour	0.0			0.0	0.0	
Running Hour	57.75			3.15	0.22	
Total Hour	57.75			3.15	0.22	
Start-up Day						
Running Day						
Total Day						

NE Model 2.0.2
File Language

International Vehicle Emissions Model

Calculation Location Fleet Base Adjustment

Location Group: PERINT15 S3 B SANG (+79k)

Calculate Locations: PERINT15 S3 B SANG (+79k)

Available Locations: PERINT15 S2 A SCORE (+79k), PERINT15 S2 A SCORE (+79k), PERINT15 S2 B FAGG (+79k), PERINT15 S2 B SANG (+79k), PERINT15 S2 B SCORE (+79k), PERINT15 S3 A FAGG (+79k), PERINT15 S3 A SANG (+79k), PERINT15 S3 A SCORE (+79k), PERINT15 S3 B SCORE (+79k), PERINT15 S3 B SANG (+79k), PERINT15 S4 A FAGG (+79k)

Display Hour: 14:00 Display Units: grams

Calculate One Hour Calculate One Day

Distance/Time: 1.4 km Start-ups: 0.0

Results

	CO	HC	VOC eqv	NO _x	PM ₁₀	PM
Start-up Hour	0.0			0.0	0.0	
Running Hour	81.08			3.77	0.25	
Total Hour	81.08			3.77	0.25	
Start-up Day						
Running Day						
Total Day						

NE Model 2.0.2
File Language

International Vehicle Emissions Model

Calculation Location Fleet Base Adjustment

Location Group: PERINT15 S3 SCORE

Calculate Locations: PERINT15 S3 B SCORE (+79k)

Available Locations: PERINT15 S2 A SCORE (+79k), PERINT15 S2 A SCORE (+79k), PERINT15 S2 B FAGG (+79k), PERINT15 S2 B SANG (+79k), PERINT15 S2 B SCORE (+79k), PERINT15 S3 A FAGG (+79k), PERINT15 S3 A SANG (+79k), PERINT15 S3 A SCORE (+79k), PERINT15 S3 B SANG (+79k), PERINT15 S3 B SANG (+79k), PERINT15 S4 A FAGG (+79k)

Display Hour: 16:00 Display Units: grams

Calculate One Hour Calculate One Day

Distance/Time: 1.4 km Start-ups: 0.0

Results

	CO	HC	VOC eqv	NO _x	PM ₁₀	PM
Start-up Hour	0.0			0.0	0.0	
Running Hour	85.19			3.95	0.22	
Total Hour	85.19			3.95	0.22	
Start-up Day						
Running Day						
Total Day						

IV Model 2.0.2
File Language

International Vehicle Emissions Model

Calculation Location Post Basic Adjustments

Location Group: PERINTIS 54 B PAGI

Calculate Locations: PERINTIS 54 B PAGI (+79K)

Available Locations:

- PERINTIS 53 A SANG (+79K)
- PERINTIS 53 A SORE (+79K)
- PERINTIS 53 B SANG (+79K)
- PERINTIS 53 B SORE (+79K)
- PERINTIS 54 A PAGI (+79K)
- PERINTIS 54 A SANG (+79K)
- PERINTIS 54 A SORE (+79K)
- PERINTIS 55 A PAGI (+79K)
- PERINTIS 55 B SANG (+79K)
- PERINTIS 55 B SORE (+79K)

Calculate One Hour
Calculate One Day

Display Hour: 0:00 Display Units: grams

Distance/Time: 1.1 km Start-ups: 0.0

Results

	CO	VOC	VOC total	NOx	SOx	PM
Start-up Hour	0.0			0.0	0.0	
Running Hour	43.06			2.14	0.11	
Total Hour	43.06			2.14	0.11	
Start-up Day						
Running Day						
Total Day						

IV Model 2.0.2
File Language

International Vehicle Emissions Model

Calculation Location Post Basic Adjustments

Location Group: PERINTIS 54 B SANG

Calculate Locations: PERINTIS 54 B SANG (+79K)

Available Locations:

- VETERAN SELATAN 51 B SANG (+79K)
- VETERAN SELATAN 51 B SORE (+79K)
- VETERAN SELATAN 52 A PAGI (+79K)
- VETERAN SELATAN 52 A SANG (+79K)
- VETERAN SELATAN 52 A SORE (+79K)
- VETERAN SELATAN 52 B PAGI (+79K)
- VETERAN SELATAN 52 B SANG (+79K)
- VETERAN SELATAN 52 B SORE (+79K)
- AHMAD YANI 2 PAGI (+79K)
- PERINTIS 54 A SORE (+79K)
- PERINTIS 54 B SORE (+79K)

Calculate One Hour
Calculate One Day

Display Hour: 13:00 Display Units: grams

Distance/Time: 1.1 km Start-ups: 0.0

Results

	CO	VOC	VOC total	NOx	SOx	PM
Start-up Hour	0.0			0.0	0.0	
Running Hour	30.78			2.14	0.14	
Total Hour	30.78			2.14	0.14	
Start-up Day						
Running Day						
Total Day						

VE Model 2.0.2
File Language

International Vehicle Emissions Model

Calculation Location Fuel Base Adjustments

Location Group: PERINTIS 54 B SCORE

Calculate Locations: PERINTIS 54 B SCORE (+79k)

Available Locations:

- VETERAN SELATAN S1 B PAGI (+79k)
- VETERAN SELATAN S1 B SIANG (+79k)
- VETERAN SELATAN S1 B SORE (+79k)
- VETERAN SELATAN S2 A PAGI (+79k)
- VETERAN SELATAN S2 A SIANG (+79k)
- VETERAN SELATAN S2 A SORE (+79k)
- VETERAN SELATAN S2 B PAGI (+79k)
- VETERAN SELATAN S2 B SIANG (+79k)
- VETERAN SELATAN S2 B SORE (+79k)
- AHMAD YANI 2 PAGI (+79k)
- PERINTIS 56 A SCORE

Calculate One Hour
Calculate One Day

Display Hour: 16:00 Display Units: grams

Distance/Time: 1.1 km Start-ups: 0.0

Results

	CO	VOC	VOC non	NO _x	SO _x	PM
Start-up Hour	0.0			0.0	0.0	
Running Hour	44.88			2.23	0.16	
Total Hour	44.88			2.23	0.16	
Start-up Day						
Running Day						
Total Day						

VE Model 2.0.2
File Language

International Vehicle Emissions Model

Calculation Location Fuel Base Adjustments

Location Group: PERINTIS 55 B PAGI

Calculate Locations: PERINTIS 55 A PAGI (+79k)

Available Locations:

- PERINTIS 54 A SIANG (+79k)
- PERINTIS 54 A SORE (+79k)
- PERINTIS 54 B PAGI (+79k)
- PERINTIS 55 B SIANG (+79k)
- PERINTIS 55 B SORE (+79k)
- PERINTIS 55 B PAGI (+79k)
- PERINTIS 56 A SCORE (+79k)
- PERINTIS 56 B PAGI (+79k)
- PERINTIS 56 B SIANG (+79k)
- PERINTIS 56 B SORE (+79k)
- PERINTIS 58 A PAGI (+79k)

Calculate One Hour
Calculate One Day

Display Hour: 0:00 Display Units: grams

Distance/Time: 1.8 km Start-ups: 0.0

Results

	CO	VOC	VOC non	NO _x	SO _x	PM
Start-up Hour	0.0			0.0	0.0	
Running Hour	41.84			2.39	0.21	
Total Hour	41.84			2.39	0.21	
Start-up Day						
Running Day						
Total Day						

IE Model 2.0.2
File Language

International Vehicle Emissions Model

Calculation Location Fuel Base Adjustments

Location Group: PERENTIS 55 B MANG (-79k)

Calculate Locations: PERENTIS 55 B MANG (-79k)

Available Locations:

- PERENTIS 54 A MANG (-79k)
- PERENTIS 54 A SORE (-79k)
- PERENTIS 54 B PAGE (-79k)
- PERENTIS 55 A PAGE (-79k)
- PERENTIS 55 B SORE (-79k)
- PERENTIS 55 B PAGE (-79k)
- PERENTIS 56 A SORE (-79k)
- PERENTIS 56 B PAGE (-79k)
- PERENTIS 56 B MANG (-79k)
- PERENTIS 56 B SORE (-79k)
- PERENTIS 56 A PAGE (-79k)

Calculate One Hour
Calculate One Day

Display Hour: 14:00 Display Units: grams

Distance/Time: 1.8 km Start-ups: 0.0

Options: CO VOC VOC emis NO_x SO_x PM

Results	CO	VOC	VOC emis	NO _x	SO _x	PM
Start-up Hour	0.0			0.0	0.0	
Running Hour	47.65			3.45	0.25	
Total Hour	47.65			3.45	0.25	
Start-up Day						
Running Day						
Total Day						

IE Model 2.0.2
File Language

International Vehicle Emissions Model

Calculation Location Fuel Base Adjustments

Location Group: PERENTIS 55 B SORE (-79k)

Calculate Locations: PERENTIS 55 B SORE (-79k)

Available Locations:

- PERENTIS 54 A MANG (-79k)
- PERENTIS 54 A SORE (-79k)
- PERENTIS 54 B PAGE (-79k)
- PERENTIS 55 A PAGE (-79k)
- PERENTIS 55 B MANG (-79k)
- PERENTIS 55 B PAGE (-79k)
- PERENTIS 56 A SORE (-79k)
- PERENTIS 56 B PAGE (-79k)
- PERENTIS 56 B MANG (-79k)
- PERENTIS 56 B SORE (-79k)
- PERENTIS 56 A PAGE (-79k)

Calculate One Hour
Calculate One Day

Display Hour: 16:00 Display Units: grams

Distance/Time: 1.8 km Start-ups: 0.0

Options: CO VOC VOC emis NO_x SO_x PM

Results	CO	VOC	VOC emis	NO _x	SO _x	PM
Start-up Hour	0.0			0.0	0.0	
Running Hour	83.84			3.47	0.24	
Total Hour	83.84			3.47	0.24	
Start-up Day						
Running Day						
Total Day						

IE Model 2.0.2
File Language

International Vehicle Emissions Model

Calculation Location Power Base Adjustments

Location Group: PERINTS 50 B PAGE

Calculate Locations: PERINTS 50 B PAGE (-75K)

Available Locations: PERINTS 54 A SANG (-75K), PERINTS 54 A SCORE (-75K), PERINTS 54 B PAGE (-75K), PERINTS 55 A PAGE (-75K), PERINTS 55 B SANG (-75K), PERINTS 55 B SCORE (-75K), PERINTS 55 B PAGE (-75K), PERINTS 56 A SCORE (-75K), PERINTS 56 B SANG (-75K), PERINTS 56 B SCORE (-75K), PERINTS 56 A PAGE (-75K)

Calculate One Hour
Calculate One Day

Display Hour: 0:00 Display Units: grams

Distance/Time: 1.7 km Start-ups: 0.0

Results

	CO	VOC	VOC eq	NO _x	SO _x	PM
Start-up Hour	0.0			0.0	0.0	
Running Hour	84.38			2.56	0.15	
Total Hour	84.38			2.56	0.15	
Start-up Day						
Running Day						
Total Day						

IE Model 2.0.2
File Language

International Vehicle Emissions Model

Calculation Location Power Base Adjustments

Location Group: PERINTS 50 B SANG

Calculate Locations: PERINTS 54 B SANG (-75K)

Available Locations: PERINTS 54 A SANG (-75K), PERINTS 54 A SCORE (-75K), PERINTS 54 B PAGE (-75K), PERINTS 55 A PAGE (-75K), PERINTS 55 B SANG (-75K), PERINTS 55 B SCORE (-75K), PERINTS 55 B PAGE (-75K), PERINTS 56 A SCORE (-75K), PERINTS 56 B PAGE (-75K), PERINTS 56 B SCORE (-75K), PERINTS 56 A PAGE (-75K)

Calculate One Hour
Calculate One Day

Display Hour: 14:00 Display Units: grams

Distance/Time: 1.7 km Start-ups: 0.0

Results

	CO	VOC	VOC eq	NO _x	SO _x	PM
Start-up Hour	0.0			0.0	0.0	
Running Hour	32.58			2.23	0.16	
Total Hour	32.58			2.23	0.16	
Start-up Day						
Running Day						
Total Day						

NE Model 2.0.2
File Language

International Vehicle Emissions Model

Calculation Location Fleet Base Adjustments

Location Group: PERINTIS 50 B SCORE

Calculate Locations: PERINTIS 50 B SCORE (+79k)

Available Locations:

- PERINTIS 54 A SANG (+79k)
- PERINTIS 54 A SCORE (+79k)
- PERINTIS 54 B PAGI (+79k)
- PERINTIS 55 A PAGI (+79k)
- PERINTIS 55 B SANG (+79k)
- PERINTIS 55 B SCORE (+79k)
- PERINTIS 55 B PAGI (+79k)
- PERINTIS 56 A SCORE (+79k)
- PERINTIS 56 B PAGI (+79k)
- PERINTIS 56 B SANG (+79k)
- PERINTIS 56 A PAGI (+79k)

Calculate One Hour
Calculate One Day

Display Hour: 30.00
Display Units: grams

Distance/Time: 1.7 km
Start-Up: 0.0

Results

	CO	VOC	VOC eq	NO _x	PM
Start-Up Hour	0.0			0.0	0.0
Running Hour	62.33			3.94	0.25
Total Hour	62.33			3.94	0.25
Start-Up Day					
Running Day					
Total Day					

NE Model 2.0.2
File Language

International Vehicle Emissions Model

Calculation Location Fleet Base Adjustments

Location Group: RSRURANE 51 A PAGI

Calculate Locations: RSRURANE 51 A PAGI (+79k)

Available Locations:

- PERINTIS 56 A SANG (+79k)
- PERINTIS 55 A SCORE (+79k)
- RSRURANE 52 B PAGI (+79k)
- RSRURANE 52 B SANG (+79k)
- RSRURANE 51 A SANG (+79k)
- RSRURANE 51 A SCORE (+79k)
- RSRURANE 52 B SCORE (+79k)
- VETERAN SELATAN 51 A PAGI copy (+79k)
- VETERAN SELATAN 51 A SANG (+79k)
- VETERAN SELATAN 51 A SCORE (+79k)
- VETERAN SELATAN 51 B PAGI (+79k)

Calculate One Hour
Calculate One Day

Display Hour: 0.00 all
Display Units: grams

Distance/Time: 0.0 km
Start-Up: 0.0

Results

	CO	VOC	VOC eq	NO _x	PM
Start-Up Hour	0.0			0.0	0.0
Running Hour	27.35			1.58	0.11
Total Hour	27.35			1.58	0.11
Start-Up Day					
Running Day					
Total Day					

VE Model 2.0.2
File Language

International Vehicle Emissions Model

Calculation Location Road Base Adjustments

Location Group
RESURANCE ST A PANG

Calculate Locations
RESURANCE ST A PANG (+79K)

Available Locations
PERINTIS S1 A SANG (+79K)
PERINTIS S1 A SONE (+79K)
RESURANCE S2 D PANG (+79K)
RESURANCE S2 D SANG (+79K)
RESURANCE S1 A SANG (+79K)
RESURANCE S1 A SONE (+79K)
RESURANCE S2 D SONE (+79K)
VETERAN SELATAN S1 A PANG copy (+79K)
VETERAN SELATAN S1 A SANG (+79K)
VETERAN SELATAN S1 A SONE (+79K)
VETERAN SELATAN S1 D PANG (+79K)

Calculate One Hour
Calculate One Day

Display Hour 08:00 AM
Display Unit grams

Distance/Time 0.5 km
Start-up 0.0

Results

	CO	VOC	VOC copy	NO _x	SO _x	PM
Start-up Hour	0.0			0.0	0.0	
Running Hour	27.26			1.38	0.11	
Total Hour	27.26			1.38	0.11	
Start-up Day						
Running Day						
Total Day						

VE Model 2.0.2
File Language

International Vehicle Emissions Model

Calculation Location Road Base Adjustments

Location Group
RESURANCE ST A SANG

Calculate Locations
RESURANCE ST A SANG (+79K)

Available Locations
PERINTIS S1 A SANG (+79K)
PERINTIS S1 A SONE (+79K)
RESURANCE ST A PANG (+79K)
RESURANCE S2 D PANG (+79K)
RESURANCE S2 D SANG (+79K)
RESURANCE S1 A SONE (+79K)
RESURANCE S2 D SONE (+79K)
VETERAN SELATAN S1 A PANG copy (+79K)
VETERAN SELATAN S1 A SANG (+79K)
VETERAN SELATAN S1 A SONE (+79K)
VETERAN SELATAN S1 D PANG (+79K)

Calculate One Hour
Calculate One Day

Display Hour 08:00 AM
Display Unit grams

Distance/Time 0.5 km
Start-up 0.0

Results

	CO	VOC	VOC copy	NO _x	SO _x	PM
Start-up Hour	0.0			0.0	0.0	
Running Hour	24.29			1.5	0.11	
Total Hour	24.29			1.5	0.11	
Start-up Day						
Running Day						
Total Day						

ME Model 2.0.2
File Language

International Vehicle Emissions Model

Calculation Location Fuel Emission Adjustments

Location Code: **INDURANG ST A SORE**

Calculate Location: **INDURANG ST A SORE (-79k)**

Available Locations:

- PERINTIS SS A SANG (-79k)
- PERINTIS SS A SORE (-79k)
- INDURANG ST A PAG (-79k)
- INDURANG ST A SORE (-79k)
- INDURANG ST B SANG (-79k)
- INDURANG ST B SORE (-79k)
- VETERAN SELATAN ST A PAG copy (-79k)
- VETERAN SELATAN ST A SANG (-79k)
- VETERAN SELATAN ST A SORE (-79k)
- VETERAN SELATAN ST B PAG (-79k)

Calculate One Hour
Calculate One Day

Deploy Hour: 09:00
Deploy Units: grams

Distance/Time: 0.5 km 0.0
Start-up: 0.0

Results

	CO	HC	NOx	PM
Start-up Hour	0.0		0.0	0.0
Running Hour	20.88		0.23	0.08
Total Hour	20.88		0.23	0.08
Start-up Day				
Running Day				
Total Day				

ME Model 2.0.2
File Language

International Vehicle Emissions Model

Calculation Location Fuel Emission Adjustments

Location Code: **INDURANG ST B PAG**

Calculate Location: **INDURANG ST B PAG (-79k)**

Available Locations:

- PERINTIS SS A SANG (-79k)
- PERINTIS SS A SORE (-79k)
- INDURANG ST A PAG (-79k)
- INDURANG ST B SANG (-79k)
- INDURANG ST A SANG (-79k)
- INDURANG ST A SORE (-79k)
- INDURANG ST B SORE (-79k)
- VETERAN SELATAN ST A PAG copy (-79k)
- VETERAN SELATAN ST A SANG (-79k)
- VETERAN SELATAN ST A SORE (-79k)
- VETERAN SELATAN ST B PAG (-79k)

Calculate One Hour
Calculate One Day

Deploy Hour: 09:00
Deploy Units: grams

Distance/Time: 0.5 km 0.0
Start-up: 0.0

Results

	CO	HC	NOx	PM
Start-up Hour	0.0		0.0	0.0
Running Hour	22.05		0.44	0.15
Total Hour	22.05		0.44	0.15
Start-up Day				
Running Day				
Total Day				

IVEMod 2.0.2
Language

International Vehicle Emissions Model

Calculation Location Fuel Base Adjustments

Location Group: RIBURANE S1 B SIANG

Calculate Locations:
RIBURANE S2 B NANG (-79k)

Available Locations:
PERINTIS S6 A SIANG (-79k)
PERINTIS S5 A SORE (-79k)
RIBURANE S1 A PAGI (-79k)
RIBURANE S2 B PAGI (-79k)
RIBURANE S1 A SIANG (-79k)
RIBURANE S1 A SORE (-79k)
RIBURANE S2 B SORE (-79k)
VETERAN SELATAN S1 A PAGI copy (-79k)
VETERAN SELATAN S1 A SIANG (-79k)
VETERAN SELATAN S1 A SORE (-79k)
VETERAN SELATAN S1 B PAGI (-79k)

Calculate One Hour
Calculate One Day

Display Hour: 08:00
Display Units: grams
Distance/Time: 8.5 km
Start-ups: 0.0

Results

	CO	VOC	VOC emp	NO _x	PM
Start-up Hour	0.0			0.0	0.0
Running Hour	17.96			1.1	0.07
Total Hour	17.96			1.1	0.07
Start-up Day					
Running Day					
Total Day					

IVEMod 2.0.2
Language

International Vehicle Emissions Model

Calculation Location Fuel Base Adjustments

Location Group: RIBURANE S1 A SORE

Calculate Locations:
RIBURANE S2 B SORE (-79k)

Available Locations:
PERINTIS S6 A SIANG (-79k)
PERINTIS S5 A SORE (-79k)
RIBURANE S1 A PAGI (-79k)
RIBURANE S2 B PAGI (-79k)
RIBURANE S2 B SIANG (-79k)
RIBURANE S1 A SIANG (-79k)
RIBURANE S1 A SORE (-79k)
VETERAN SELATAN S1 A PAGI copy (-79k)
VETERAN SELATAN S1 A SIANG (-79k)
VETERAN SELATAN S1 A SORE (-79k)
VETERAN SELATAN S1 B PAGI (-79k)

Calculate One Hour
Calculate One Day

Display Hour: 08:00
Display Units: grams
Distance/Time: 8.5 km
Start-ups: 0.0

Results

	CO	VOC	VOC emp	NO _x	PM
Start-up Hour	0.0			0.0	0.0
Running Hour	18.08			1.17	0.08
Total Hour	18.08			1.17	0.08
Start-up Day					
Running Day					
Total Day					

Lampiran 7: Dokumentasi Kegiatan

Video survey Ihr



baddoka-patung ayam pagi



telkomas-patung ayam p



telkomas-btp-telkomas siang



baddoka-patung ayam sore 1



telkomas-btp-telkomas-pagi



baddoka-patung siang



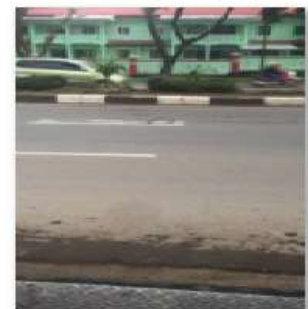
telkomas-patung siang



baddoka-patung ayam sore 2



telkomas-patung ayam



telkomas-btp-telkomas sore

Dokumentasi *Tracking*



