

DAFTAR PUSTAKA

- Asquith, G. dan Krygowsky, D. 2004. *Basic Well Log Analysis: Second Edition*. The American Association of Petroleum Geologist (AAPG): Oklahoma.
- Ayadiuno, C.B., Khan, S., AlAbbad, A.A., dan AlMohsen, F. 2017. Investigating Low Resistivity-Low Contrast Resistivity Pay in a Permo-Carboniferous Reservoir, Central Saudi Arabia. *Abu Dhabi International Petroleum Exhibition & Conference*: Abu Dhabi. UAE.
- Bassiouni, Z. 1994. *Theory, Measurement, and Interpretation of Well Logs*. Society of Petroleum Engineers: United States of America.
- Chai, T. dan Draxler, R.R. 2014. Root Mean Square Error (RMSE) or Mean Absolute Error (MAE)? – Arguments Against Avoiding RMSE in the Literature. *Geoscientific Model Development*. Hal 1247 – 1250.
- Chu, W.C dan Steckhan, J. 2011. A Practical Approach to Determine Low-Resistivity Pay in Clastic Reservoirs. *SPE Annual Technical Conference and Exhibition*. Colorado, USA.
- Dwiyono, I.F. dan Winardi, S. 2014. Kompilasi Metode Water Saturation dalam Evaluasi Formasi. *Prosiding Seminar Nasional Kebumihan Ke-7*. Hal 420 – 437.
- Ginger, D., dan Fielding, K. 2005. The Petroleum System and Future Potential of The South Sumatera Basin. *Proceeding Indonesian Petroleum Association (IPA), The 30th Annual Covention & Exhibition*: Jakarta. Indonesia.
- Glover, P.W.J. 2007. *Petrophysics*. University of Aberdeen: UK.
- Harsono, A. 1997. *Evaluasi Formasi dan Aplikasi Log: Edisi Revisi-8*. Schlumberger Oil Services: Indonesia.
- Herdiansyah, F., Abdurrokhim, Syafri, I. 2016. Low Resistivity Zone Pada Reservoir Batupasir Formasi Cibulakan Atas, Cekungan Jawa Barat. *Bulletin of Scientific Contribution*. Vol. 14(1): Hal 97 – 116.
- Koesoemadinata, R.P., 1980. *Geologi Minyak dan Gas Bumi Edisi kedua Jilid 1 dan 2*. ITB: Bandung.
- Kumar, P., Solomon R., Varun, T. R., dan Samanta, A. 2009 An Integrated Approach To Solve Reverse Resistivity Contrast Problem In Fresh

Water Shaly Sand Reservoir Of Changmaigaon Field, Assam India –
A Case Study. *2nd SPWLA – India Symposium*.

- Mashaba, V. Dan Altermann, W. 2015. Calculation of Water Saturation in Low Resistivity Gas Reservoir and Pay-Zones of the Cretaceous Grudja Formation, Onshore Mozambique. *Marine and Petroleum Geology*. Hal 249 – 261.
- PetroChina International Jabung Ltd. 2009. *Routine Core and Rock Description*. Jakarta Selatan.
- PetroChina International Jabung Ltd. 2017. Jakarta Selatan.
- Pratama, E., Ismail, M.S., dan Ridha, S. 2017. An Integrated Workflow to Characterize and Evaluate Low Resistivity Pay and Its Phenomenon in a sandstone reservoir. *Journal of Geophysics and Engineering*. Hal 513 – 519.
- Telford, W.M., Geldart, L.P., Sheriff, R.E., dan Keys, D.A. 1990. *Applied Geophysics*. Cambridge University: London.
- Tiab, D. Dan Donaldson, E.C. 2004. *Petrophysics second edition: Theory and Practice of Measuring Reservoir Rock and Fluid Transport Properties*. Elsevier: USA.
- Willmott, C.J. dan Matsuura, K. 2005. Advantages of the Mean Absolute Error (MAE) Over the Root Mean Square Error (RMSE) in Assessing Average Model Performance. *Climate Research*. University of Delaware: USA.
- Zhiqiang, M., Lichun, K., Chengwen, X., Guoxin, L., Cancan, Z., dan Jian, O. 2007. Identification and Evaluation of Low Resistivity Pay Zones y Well Logs and the Petrophysical Research in China. *Petroleum Science*. Vol. 4 (1).

LAMPIRAN

Hasil Perhitungan Nilai RMSE

Nilai RMSE perhitungan kandungan lempung

Depth (ft)	Observasi	Kalkulasi			(Selisih) ²		
	Mineral Lempung (Dec)	Vsh_Cl (Dec)	Vsh_Ln (Dec)	Vsh_St (Dec)	Vsh_Cl (Dec)	Vsh_Ln (Dec)	Vsh_St (Dec)
3361	0.22	0.2434	0.4217	0.1956	0.000548	0.040683	0.000595
3605	0.08	0.105	0.2142	0.0833	0.000625	0.01801	1.09E-05
3710	0.05	0.1041	0.2127	0.0826	0.002927	0.026471	0.001063
3769	0.06	0.0133	0.0315	0.0107	0.002181	0.000812	0.00243
3840	0.03	0.0169	0.0398	0.0136	0.000172	9.E-05	0.000269
4042	0.05	0.0475	0.1059	0.038	6.25E-06	0.003125	0.000144
Jumlah					0.006458	0.089197	0.004512
RMSE					0.032808	0.121927	0.027424

Nilai RMSE perhitungan porositas

Depth (ft)	Observasi	Kalkulasi			(Selisih) ²		
	Phi Core (Dec)	Phi D(Dec)	Phi ND (Dec)	Phi NS (Dec)	Phi D(Dec)	Phi ND (Dec)	Phi NS (Dec)
3102	0,158	0,2155	0,2309	0,3116	0,003306	0,005314	0,023593
3145	0,193	0,2309	0,2369	0,2824	0,001436	0,001927	0,007992
3151	0,215	0,2114	0,2196	0,2647	1,3E-05	2,12E-05	0,00247
3270	0,183	0,1895	0,1978	0,2388	4,23E-05	0,000219	0,003114
3280	0,19	0,2196	0,2261	0,2785	0,000876	0,001303	0,007832
3290	0,206	0,2355	0,2454	0,3126	0,00087	0,001552	0,011364
3361	0,178	0,2001	0,2166	0,2844	0,000488	0,00149	0,011321
3363	0,194	0,1808	0,1957	0,2503	0,000174	2,89E-06	0,00317
3365	0,221	0,1796	0,1919	0,2501	0,001714	0,000847	0,000847
3551	0,227	0,1798	0,1951	0,2308	0,002228	0,001018	1,44E-05
3605	0,26	0,2175	0,2438	0,3068	0,001806	0,000262	0,00219
3608	0,277	0,2328	0,2487	0,2893	0,001954	0,000801	0,000151
3710	0,294	0,2514	0,2634	0,3252	0,001815	0,000936	0,000973
3714	0,269	0,2817	0,2888	0,3243	0,000161	0,000392	0,003058
3767	0,284	0,3263	0,3263	0,4041	0,001789	0,001789	0,014424
3769	0,295	0,3324	0,3276	0,3841	0,001399	0,001063	0,007939
3771	0,277	0,3281	0,3282	0,3917	0,002611	0,002621	0,013156
3840	0,231	0,322	0,3176	0,3426	0,008281	0,0075	0,012455

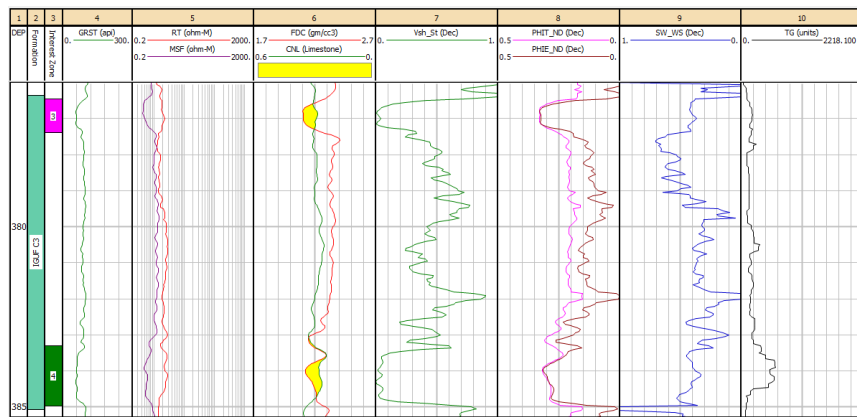
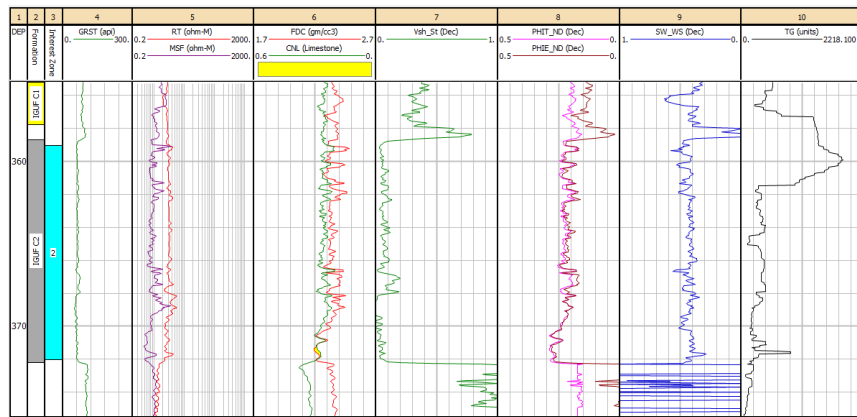
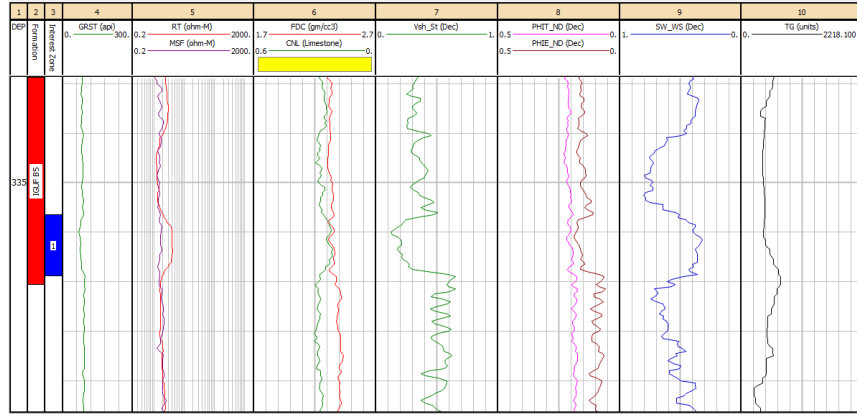
3945	0,252	0,167	0,237	0,3143	0,007225	0,000225	0,003881
3947	0,262	0,2401	0,2675	0,3594	0,00048	3,03E-05	0,009487
3949	0,268	0,2582	0,283	0,374	9,6E-05	0,000225	0,011236
4042	0,249	0,1815	0,1793	0,2093	0,004556	0,004858	0,001576
4455	0,161	0,0558	0,1552	0,2178	0,011067	3,36E-05	0,003226
4456	0,181	0,0702	0,166	0,2394	0,012277	0,000225	0,003411
Jumlah					0,066666	0,034656	0,15888
RMSE					0,052704	0,038	0,081363

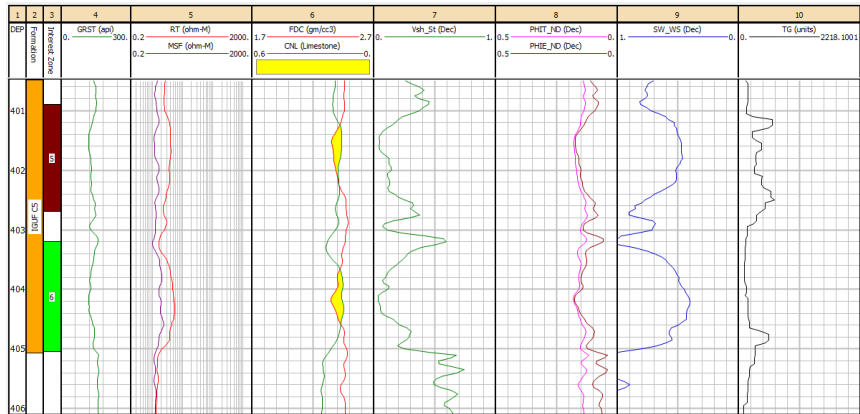
Nilai RMSE perhitungan saturasi air

Depth (ft)	Observasi	Kalkulasi				(Selisih) ²			
	Sw Core (Dec)	SW_DW	SW_Ind	SW_Smn	SW_Wxs	SW_DW	SW_Ind	SW_Smn	SW_Wxs
3102	0.536	0.3263	0.6023	0.7288	0.5833	0.043974	0.004396	0.037172	0.002237
3145	0.497	0.2431	0.4871	0.5478	0.4189	0.064465	9.8E-05	0.002581	0.0061
3151	0.398	0.001	0.4757	0.5453	0.3215	0.157609	0.006037	0.021697	0.005852
3270	0.477	0.001	0.5755	0.687	0.4406	0.226576	0.009702	0.0441	0.001325
3280	0.435	0.1442	0.5109	0.5978	0.4121	0.084565	0.005761	0.026504	0.000524
3361	0.425	0.3127	0.4797	0.5182	0.4283	0.012611	0.002992	0.008686	1.09E-05
3363	0.455	0.325	0.5221	0.5589	0.4647	0.0169	0.004502	0.010795	9.41E-05
3365	0.373	0.3074	0.5321	0.5751	0.471	0.004303	0.025313	0.040844	0.009604
3551	0.387	0.1525	0.551	0.6334	0.4518	0.05499	0.026896	0.060713	0.004199
3605	0.334	0.4717	0.5284	0.5455	0.5129	0.018961	0.037791	0.044732	0.032005
3608	0.328	0.4483	0.5007	0.5143	0.4846	0.014472	0.029825	0.034708	0.024524
3710	0.3	0.4452	0.4995	0.5152	0.4828	0.021083	0.0398	0.046311	0.033416
3714	0.338	0.4521	0.4836	0.4925	0.4733	0.013019	0.021199	0.02387	0.018306
3767	0.292	0.4953	0.5159	0.5237	0.5099	0.041331	0.050131	0.053685	0.04748
3769	0.302	0.4809	0.4867	0.4884	0.4847	0.032005	0.034114	0.034745	0.033379
3771	0.368	0.4804	0.4843	0.4854	0.4829	0.012634	0.013526	0.013783	0.013202
3840	0.418	0.4522	0.4601	0.4621	0.4572	0.00117	0.001772	0.001945	0.001537
3945	0.326	0.5838	0.5838	0.5838	0.5838	0.066461	0.066461	0.066461	0.066461
3947	0.334	0.5925	0.5925	0.5925	0.5925	0.066822	0.066822	0.066822	0.066822
3949	0.357	0.6408	0.6408	0.6408	0.6408	0.080542	0.080542	0.080542	0.080542
4455	0.466	0.2582	0.6252	0.6855	0.4601	0.043181	0.025345	0.04818	3.48E-05
4456	0.496	0.6472	0.7391	0.7638	0.7031	0.022861	0.059098	0.071717	0.04289
Jumlah						1.100536	0.612125	0.840594	0.490546
RMSE						0.223661	0.166805	0.195471	0.149324

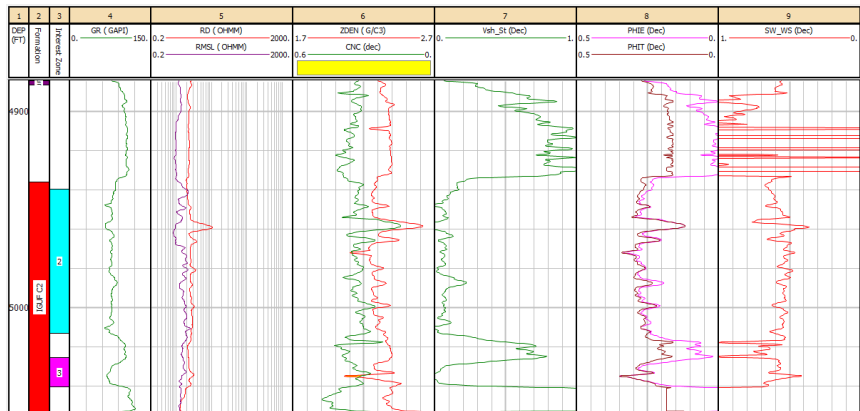
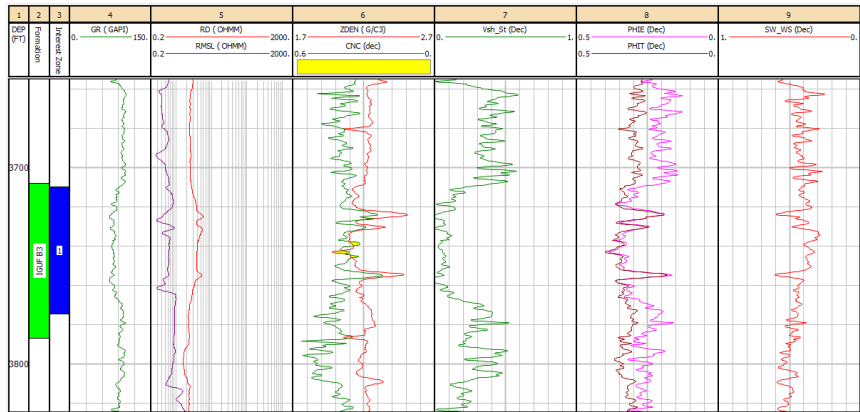
Hasil Analisa Petrofisika di Setiap Sumur

Sumur PTC-1





Sumur PTC-7



Sumur PTC-8

