

DAFTAR PUSTAKA

Tentative Rules For Polyethylene Crafts 2014. Turk Loydu. Istanbul.

DNV Rules (2010). *Standard For Certification No.2.21 CRAFT*. Det Norske Veritas.

DNV.(1997). Tentative Rules for Certification and Classification of Boats-Part 3 Chapter 4 Thermoplastic Construction.Det Norske Veritas, Norwegia.

Boat Indonesia. (2014). Mengapa HDPE Boat Mempunya Prospek yang Bagus?.URL:<http://www.boatindonesia.com/2014/03/mengapa-hdpe-boat-mempunyai-prospek-yang-bagus/>.

Ardiana, D., Razali., Muarnis. 2014. Proses Pembuatan Kapal Berkapasitas 14 XM Bagi Nelayan Di Kabupaten Bengkalis. *Inovtek*. 4(1), 43-47.

Anonim. 2005. *Design, Construction and Equipment of Small Fishing Vessels of less than 15 m Length overall, Code of Practice*

LAMPIRAN

Tabel perhitungan penggunaan material pelat

➤ Ketebalan 10 mm

KETEBALAN 10 mm								
NO PLAT	NAMA KOMPONEN	LUAS (mm ²)		TEBAL (mm)	VOLUME (mm ³)		BERAT BERSIH (kg)	BERAT KOTOR (kg)
		KOMPONEN	PLAT		KOMPONEN	PLAT		
1	1.HS.BT.8.SF.9,5	378843	2976800	10	3788430	29768000	3,682	28,9345
	1.HS.BT.23.SF.9,5	391007		10	3910070		3,801	
	1.HS.BT.24.SF.9,5	380843		10	3808430		3,702	
	1.HS.BT.12.SF.9,5	395816		10	3958160		3,847	
	1.HS.BT.11.SF.9,5	393862		10	3938620		3,828	
	1.HS.BT.9.SF.9,5	382585		10	3825850		3,719	
2	1.HS.BT.26.SF.9,5	342233	2976800	10	3422330	29768000	3,327	28,9345
	1.HS.BT.27.SF.9,5	318230		10	3182300		3,093	
	1.HS.BT.29.SF.9,5	256367		10	2563670		2,492	
	1.HS.BT.31.SF.9,5	184065		10	1840650		1,789	
	1.HS.BT.32.SF.9,5	139792		10	1397920		1,359	
	1.HS.BT.34.SF.9,5	44562		10	445620		0,433	
	1.HS.BT.35.SF.9,5	49626		10	496260		0,482	
	1.HS.BT.36.SF.9,5	96109		10	961090		0,934	
3	1.HS.BT.1.SF.9,5	279063	2976800	10	2790630	29768000	2,712	28,9345
	1.HS.BT.14.SF.9,5	394979		10	3949790		3,839	
	1.HS.BT.15.SF.9,5	394979		10	3949790		3,839	
	1.HS.BT.17.SF.9,5	394979		10	3949790		3,839	
	1.HS.BT.18.SF.9,5	394979		10	3949790		3,839	
	1.HS.BT.20.SF.9,5	394979		10	3949790		3,839	
4	1.HS.PS.14.MF.9,5	58420	2976800	10	584200	29768000	0,568	28,9345
	1.HS.PS.15.MF.9,5	58420		10	584200		0,568	
	1.HS.PS.17.MF.9,5	58420		10	584200		0,568	
	1.HS.PS.18.MF.9,5	58420		10	584200		0,568	
	1.HS.PS.20.MF.9,5	58420		10	584200		0,568	
	1.HS.PS.21.MF.9,5	58420		10	584200		0,568	
	1.HS.PS.23.MF.9,5	61240		10	612400		0,595	
	1.HS.PS.24.MF.9,5	63229		10	632290		0,615	
	1.HS.PS.26.MF.9,5	63294		10	632940		0,615	
	1.HS.PS.27.MF.9,5	65943		10	659430		0,641	
	1.HS.PS.34.MF.9,5	86181		10	861810		0,838	
	1.HS.PS.32.MF.9,5	84484		10	844840		0,821	
	1.HS.PS.31.MF.9,5	83484		10	834840		0,811	
	1.HS.PS.35.MF.9,5	49394		10	493940		0,480	
	5	1.HS.PS.29.MF.9,5		72997	2976800		10	
1.HS.PS.0.MF.9,5		35779	10	357790		0,348		
1.HS.PS.2.MF.9,5		35779	10	357790		0,348		
1.HS.PS.3.MF.9,5		35779	10	357790		0,348		
1.HS.PS.4.MF.9,5		35779	10	357790		0,348		
1.HS.PS.5.MF.9,5		35779	10	357790		0,348		
1.HS.PS.6.MF.9,5		35779	10	357790		0,348		
1.HS.PS.7.MF.9,5		35779	10	357790		0,348		
1.HS.PS.10.MF.9,5		35779	10	357790		0,348		
1.HS.PS.13.MF.9,5		35779	10	357790		0,348		
1.HS.PS.16.MF.9,5		35779	10	357790		0,348		
1.HS.PS.19.MF.9,5		35779	10	357790		0,348		
1.HS.PS.22.MF.9,5		37754	10	377540		0,367		
1.HS.BLK.16.9,5		930326	10	9303260		9,043		
6	1.HS.BLK.28.9,5	1114153	2976800	10	11141530	29768000	10,830	28,9345
	1.HS.BLK.2.9,5	963270		10	9632700		9,363	
7	1.HS.BLK.10.9,5	1106645	2976800	10	11066450	29768000	10,757	28,9345
	1.HS.PS.28.MF.9,5	44519		10	445190		0,433	
	1.HS.PS.30.MF.9,5	46238		10	462380		0,449	
	1.HS.PS.25.MF.9,5	39717		10	397170		0,386	
	1.HS.PS.33.MF.9,5	52791		10	527910		0,513	
	1.HS.PS.34.MF.9,5	55733		10	557330		0,542	
	1.HS.PS.35.MF.9,5	60823		10	608230		0,591	
	1.HS.PS.36.MF.9,5	30877		10	308770		0,300	
	1.HS.BLK.22.9,5	1110387		10	11103870		10,793	
	1.HS.BLK.30.9,5	784879		10	7848790		7,629	

8	1.HS.BLK.3.9.5	993891	2976800	10	9938910	29768000	9,661	28,9345
	1.HS.BLK.7.9.5	1076103		10	10761030		10,460	
9	1.HS.BLK.19.9.5	1114153	2976800	10	11141530	29768000	10,830	28,9345
	1.HS.BLK.25.9.5	1061720		10	10617200		10,320	
10	1.HS.BLK.4.9.5	1022870	2976800	10	10228700	29768000	9,942	28,9345
	1.HS.BLK.6.9.5	1043700		10	10437000		10,145	
11	1.HS.BLK.0.9.5	902547	2976800	10	9025470	29768000	8,773	28,9345
	1.HS.BLK.13.9.5	1113609		10	11136090		10,824	
12	1.HS.BLK.5.9.5	1044487	2976800	10	10444870	29768000	10,152	28,9345
	1.HS.BLK.33.9.5	411666		10	4116660		4,001	
13	1.HS.BT.1.1.SG.9.5	122000	2976800	10	1220000	29768000	1,186	28,9345
	1.HS.BT.1.2.SG.9.5	122000		10	1220000		1,186	
	1.HS.BT.1.3.SG.9.5	122000		10	1220000		1,186	
	1.HS.BT.1.4.SG.9.5	122000		10	1220000		1,186	
	1.HS.BT.1.5.SG.9.5	122000		10	1220000		1,186	
	1.HS.BT.2.1.SG.9.5	122000		10	1220000		1,186	
	1.HS.BT.2.2.SG.9.5	122000		10	1220000		1,186	
	1.HS.BT.2.3.SG.9.5	122000		10	1220000		1,186	
	1.HS.BT.2.4.SG.9.5	122000		10	1220000		1,186	
	1.HS.BT.2.5.SG.9.5	122000		10	1220000		1,186	
	1.HS.BT.3.1.SG.9.5	122000		10	1220000		1,186	
	1.HS.BT.3.2.SG.9.5	122000		10	1220000		1,186	
	1.HS.BT.3.3.SG.9.5	122000		10	1220000		1,186	
14	1.HS.PS.1.1.SR.9.5	122000	2976800	10	1220000	29768000	1,186	28,9345
	1.HS.PS.1.2.SR.9.5	122000		10	1220000		1,186	
	1.HS.PS.1.3.SR.9.5	122000		10	1220000		1,186	
	1.HS.PS.1.4.SR.9.5	122000		10	1220000		1,186	
	1.HS.PS.1.5.SR.9.5	122000		10	1220000		1,186	
	1.HS.PS.1.6.SR.9.5	122000		10	1220000		1,186	
	1.HS.PS.2.1.SR.9.5	122000		10	1220000		1,186	
	1.HS.PS.2.2.SR.9.5	122000		10	1220000		1,186	
	1.HS.PS.2.3.SR.9.5	122000		10	1220000		1,186	
	1.HS.PS.2.4.SR.9.5	122000		10	1220000		1,186	
15	1.HS.BT.2.8.SG.9.5	38395	2976800	10	383950	29768000	0,373	28,9345
	1.HS.PS.2.8.SR.9.5	56371		10	563710		0,548	
	1.HS.BT.1.8.SG.9.5	65504		10	655040		0,637	
	1.HS.PS.1.8.SR.9.5	34081		10	340810		0,331	
	1.HS.BT.3.7.SG.9.5	128750		10	1287500		1,251	
	1.HS.BT.2.7.SG.9.5	124850		10	1248500		1,214	
	1.HS.BT.3.7.SG.9.5	124850		10	1248500		1,214	
	1.HS.PS.1.7.SR.9.5	124850		10	1248500		1,214	
	1.HS.PS.2.7.SR.9.5	124850		10	1248500		1,214	
	1.HS.BT.3.6.SG.9.5	122000		10	1220000		1,186	
16	1.HS.BT.8.SF.9.5	378843	2976800	10	3788430	29768000	3,682	28,9345
	1.HS.BT.23.SF.9.5	391007		10	3910070		3,801	
	1.HS.BT.24.SF.9.5	380843		10	3808430		3,702	
	1.HS.BT.12.SF.9.5	395816		10	3958160		3,847	
	1.HS.BT.11.SF.9.5	393862		10	3938620		3,828	
	1.HS.BT.9.SF.9.5	382585		10	3825850		3,719	
17	1.HS.BT.26.SF.9.5	342233	2976800	10	3422330	29768000	3,327	28,9345
	1.HS.BT.27.SF.9.5	318230		10	3182300		3,093	
	1.HS.BT.29.SF.9.5	256367		10	2563670		2,492	
	1.HS.BT.31.SF.9.5	184065		10	1840650		1,789	
	1.HS.BT.32.SF.9.5	139792		10	1397920		1,359	
	1.HS.BT.34.SF.9.5	44562		10	445620		0,433	
	1.HS.BT.35.SF.9.5	49626		10	496260		0,482	
	1.HS.BT.36.SF.9.5	96109		10	961090		0,934	
18	1.HS.BT.1.SF.9.5	279063	2976800	10	2790630	29768000	2,712	28,9345
	1.HS.BT.14.SF.9.5	394979		10	3949790		3,839	
	1.HS.BT.15.SF.9.5	394979		10	3949790		3,839	
	1.HS.BT.17.SF.9.5	394979		10	3949790		3,839	
	1.HS.BT.18.SF.9.5	394979		10	3949790		3,839	
	1.HS.BT.20.SF.9.5	394979		10	3949790		3,839	

19	1.HS.PS.14.MF.9,5	58420	2976800	10	584200	29768000	0,568	28,9345			
	1.HS.PS.15.MF.9,5	58420		10	584200		0,568				
	1.HS.PS.17.MF.9,5	58420		10	584200		0,568				
	1.HS.PS.18.MF.9,5	58420		10	584200		0,568				
	1.HS.PS.20.MF.9,5	58420		10	584200		0,568				
	1.HS.PS.21.MF.9,5	58420		10	584200		0,568				
	1.HS.PS.23.MF.9,5	61240		10	612400		0,595				
	1.HS.PS.24.MF.9,5	63229		10	632290		0,615				
	1.HS.PS.26.MF.9,5	63294		10	632940		0,615				
	1.HS.PS.27.MF.9,5	65943		10	659430		0,641				
	1.HS.PS.34.MF.9,5	86181		10	861810		0,838				
	1.HS.PS.32.MF.9,5	84484		10	844840		0,821				
	1.HS.PS.31.MF.9,5	83484		10	834840		0,811				
	1.HS.PS.35.MF.9,5	49394		10	493940		0,480				
1.HS.PS.29.MF.9,5	72997	10	729970	0,710							
20	1.HS.PS.0.MF.9,5	35779	2976800	10	357790	29768000	0,348	28,9345			
	1.HS.PS.2.MF.9,5	35779		10	357790		0,348				
	1.HS.PS.3.MF.9,5	35779		10	357790		0,348				
	1.HS.PS.4.MF.9,5	35779		10	357790		0,348				
	1.HS.PS.5.MF.9,5	35779		10	357790		0,348				
	1.HS.PS.6.MF.9,5	35779		10	357790		0,348				
	1.HS.PS.7.MF.9,5	35779		10	357790		0,348				
	1.HS.PS.10.MF.9,5	35779		10	357790		0,348				
	1.HS.PS.13.MF.9,5	35779		10	357790		0,348				
	1.HS.PS.16.MF.9,5	35779		10	357790		0,348				
	1.HS.PS.19.MF.9,5	35779		10	357790		0,348				
	1.HS.PS.22.MF.9,5	37754		10	377540		0,367				
	1.HS.BLK.16.9,5	930326		10	9303260		9,043				
	1.HS.BLK.28.9,5	1114153		10	11141530		10,830				
1.HS.BLK.2.9,5	963270	10	9632700	9,363							
1.HS.BLK.10.9,5	1106645	10	11066450	10,757							
21	1.HS.PS.28.MF.9,5	44519	2976800	10	445190	29768000	0,433	28,9345			
	1.HS.PS.30.MF.9,5	46238		10	462380		0,449				
	1.HS.PS.25.MF.9,5	39717		10	397170		0,386				
	1.HS.PS.33.MF.9,5	52791		10	527910		0,513				
	1.HS.PS.34.MF.9,5	55733		10	557330		0,542				
	1.HS.PS.35.MF.9,5	60823		10	608230		0,591				
	1.HS.PS.36.MF.9,5	30877		10	308770		0,300				
	1.HS.BLK.22.9,5	1110387		10	11103870		10,793				
	1.HS.BLK.30.9,5	784879		10	7848790		7,629				
22	1.HS.BLK.3.9,5	993891	2976800	10	9938910	29768000	9,661	28,9345			
	1.HS.BLK.7.9,5	1076103		10	10761030		10,460				
23	1.HS.BLK.19.9,5	1114153	2976800	10	11141530	29768000	10,830	28,9345			
	1.HS.BLK.25.9,5	1061720		10	10617200		10,320				
24	1.HS.BLK.4.9,5	1022870	2976800	10	10228700	29768000	9,942	28,9345			
	1.HS.BLK.6.9,5	1043700		10	10437000		10,145				
25	1.HS.BLK.0.9,5	902547	2976800	10	9025470	29768000	8,773	28,9345			
	1.HS.BLK.13.9,5	1113609		10	11136090		10,824				
26	1.HS.BLK.5.9,5	1044487	2976800	10	10444870	29768000	10,152	28,9345			
	1.HS.BLK.33.9,5	411666		10	4116660		4,001				
27	1.HS.BT.1.1.SG.9,5	122000	2976800	10	1220000	29768000	1,186	28,9345			
	1.HS.BT.1.2.SG.9,5	122000		10	1220000		1,186				
	1.HS.BT.1.3.SG.9,5	122000		10	1220000		1,186				
	1.HS.BT.1.4.SG.9,5	122000		10	1220000		1,186				
	1.HS.BT.1.5.SG.9,5	122000		10	1220000		1,186				
	1.HS.BT.2.1.SG.9,5	122000		10	1220000		1,186				
	1.HS.BT.2.2.SG.9,5	122000		10	1220000		1,186				
	1.HS.BT.2.3.SG.9,5	122000		10	1220000		1,186				
	1.HS.BT.2.4.SG.9,5	122000		10	1220000		1,186				
	1.HS.BT.2.5.SG.9,5	122000		10	1220000		1,186				
	1.HS.BT.3.1.SG.9,5	122000		10	1220000		1,186				
	1.HS.BT.3.2.SG.9,5	122000		10	1220000		1,186				
	1.HS.BT.3.3.SG.9,5	122000		10	1220000		1,186				
	1.HS.BT.3.4.SG.9,5	122000		10	1220000		1,186				
	1.HS.BT.3.5.SG.9,5	122000		10	1220000		1,186				
28	1.HS.PS.1.1.SR.9,5	122000	2976800	10	1220000	29768000	1,186	28,9345			
	1.HS.PS.1.3.SR.9,5	122000		10	1220000		1,186				
	1.HS.PS.1.4.SR.9,5	122000		10	1220000		1,186				
	1.HS.PS.1.5.SR.9,5	122000		10	1220000		1,186				
	1.HS.PS.1.6.SR.9,5	122000		10	1220000		1,186				
	1.HS.PS.2.1.SR.9,5	122000		10	1220000		1,186				
	1.HS.PS.2.2.SR.9,5	122000		10	1220000		1,186				
	1.HS.PS.2.3.SR.9,5	122000		10	1220000		1,186				
	1.HS.PS.2.4.SR.9,5	122000		10	1220000		1,186				
	1.HS.PS.2.5.SR.9,5	122000		10	1220000		1,186				
	1.HS.PS.2.6.SR.9,5	122000		10	1220000		1,186				
29	1.HS.BT.2.8.SG.9,5	38395	2976800	10	383950	29768000	0,373	28,9345			
	1.HS.PS.2.8.SG.9,5	56371		10	563710		0,548				
	1.HS.BT.1.8.SG.9,5	65504		10	655040		0,637				
	1.HS.PS.1.8.SR.9,5	34081		10	340810		0,331				
	1.HS.BT.3.7.SG.9,5	128750		10	1287500		1,251				
	1.HS.BT.2.7.SG.9,5	124850		10	1248500		1,214				
	1.HS.BT.3.7.SG.9,5	124850		10	1248500		1,214				
	1.HS.PS.1.7.SR.9,5	124850		10	1248500		1,214				
	1.HS.PS.2.7.SR.9,5	124850		10	1248500		1,214				
	1.HS.BT.3.6.SG.9,5	122000		10	1220000		1,186				
	1.HS.BBT.2.6.SG.9,5	122000		10	1220000		1,186				
	1.HS.BT.3.8.SG.9,5	12975		10	129750		0,126				
	JUMLAH	56627092		89304000			566270920		893040000	550,4153342	868,03488

➤ Ketebalan 23 mm

KETEBALAN 23 mm								
1	1.HS.BT.1.1.CG.23	976000	2976800	23	22448000	68466400	21,819	66,5493
	1.HS.BT.1.2.CG.23	976000		23	22448000		21,819	
	1.HS.BT.1.3.CG.23	976000		23	22448000		21,819	
2	1.HS.BT.1.4.CG.23	976000	2976800	23	22448000	68466400	21,819	66,5493
	1.HS.BT.1.5.CG.23	976000		23	22448000		21,819	
	1.HS.BT.1.6.CG.23	976000		23	22448000		21,819	
3	1.HS.BT.1.7.CG.23	976000	2976800	23	22448000	68466400	21,819	66,5493
	1.HS.BT.1.8.CG.23	976000		23	22448000		21,819	
	1.HS.BT.1.9.CG.23	976000		23	22448000		21,819	
4	1.HS.BT.1.10.CG.23	976000	2976800	23	22448000	68466400	21,819	66,5493
	1.HS.BT.1.11.CG.23	976000		23	22448000		21,819	
	1.HS.BT.1.12.CG.23	976000		23	22448000		21,819	
5	1.HS.BT.1.13.CG.23	976000	2976800	23	22448000	68466400	21,819	66,5493
	1.HS.BT.1.14.CG.23	1034530		23	23794190		23,128	
6	1.HS.BT.1.15.CG.23	995183	2976800	23	22889209	68466400	22,248	66,5493
7	1.HS.BT.1.1.CG.23	976000	2976800	23	22448000	68466400	21,819	66,5493
	1.HS.BT.1.2.CG.23	976000		23	22448000		21,819	
	1.HS.BT.1.3.CG.23	976000		23	22448000		21,819	
8	1.HS.BT.1.4.CG.23	976000	2976800	23	22448000	68466400	21,819	66,5493
	1.HS.BT.1.5.CG.23	976000		23	22448000		21,819	
	1.HS.BT.1.6.CG.23	976000		23	22448000		21,819	
9	1.HS.BT.1.7.CG.23	976000	2976800	23	22448000	68466400	21,819	66,5493
	1.HS.BT.1.8.CG.23	976000		23	22448000		21,819	
	1.HS.BT.1.9.CG.23	976000		23	22448000		21,819	
10	1.HS.BT.1.10.CG.23	976000	2976800	23	22448000	68466400	21,819	66,5493
	1.HS.BT.1.11.CG.23	976000		23	22448000		21,819	
	1.HS.BT.1.12.CG.23	976000		23	22448000		21,819	
11	1.HS.BT.1.13.CG.23	976000	2976800	23	22448000	68466400	21,819	66,5493
	1.HS.BT.1.14.CG.23	1034530		23	23794190		23,128	
12	1.HS.BT.1.15.CG.23	995183	2976800	23	22889209	68466400	22,248	66,5493
JUMLAH		29435426	35721600		677014798	821596800	658,0583837	798,5920896

➤ Ketebalan 5 mm

KETEBALAN 5 mm								
1	1.HS.DECK.1.DB.4.75	57199	2976800	5	285995	14884000	0,278	14,467248
	1.HS.DECK.2.DB.4.75	58247		5	291235		0,283	
	1.HS.DECK.3.DB.4.75	59370		5	296850		0,289	
	1.HS.DECK.4.DB.4.75	60601		5	303005		0,295	
	1.HS.DECK.5.DB.4.75	61652		5	308260		0,300	
	1.HS.DECK.6.DB.4.75	62074		5	310370		0,302	
	1.HS.DECK.7.DB.4.75	62162		5	310810		0,302	
	1.HS.DECK.8.DB.4.75	62298		5	311490		0,303	
	1.HS.DECK.9.DB.4.75	62298		5	311490		0,303	
	1.HS.DECK.10.DB.4.75	62514		5	312570		0,304	
	1.HS.DECK.11.DB.4.75	62742		5	313710		0,305	
	1.HS.DECK.12.DB.4.75	62911		5	314555		0,306	
	1.HS.DECK.13.DB.4.75	62998		5	314990		0,306	
	1.HS.DECK.14.DB.4.75	63027		5	315135		0,306	
	1.HS.DECK.15.DB.4.75	63027		5	315135		0,306	
	1.HS.DECK.16.DB.4.75	63027		5	315135		0,306	
	1.HS.DECK.17.DB.4.75	63027		5	315135		0,306	
	1.HS.DECK.18.DB.4.75	63027		5	315135		0,306	
	1.HS.DECK.19.DB.4.75	63027		5	315135		0,306	
	1.HS.DECK.20.DB.4.75	63027		5	315135		0,306	
2	1.HS.DECK.21.DB.4.75	63021	2976800	5	315105	14884000	0,306	14,467248
	1.HS.DECK.22.DB.4.75	63021		5	315105		0,306	
	1.HS.DECK.23.DB.4.75	62823		5	314115		0,305	
	1.HS.DECK.24.DB.4.75	62532		5	312660		0,304	
	1.HS.DECK.25.DB.4.75	62057		5	310285		0,302	
	1.HS.DECK.26.DB.4.75	61306		5	306530		0,298	
	1.HS.DECK.27.DB.4.75	60138		5	300690		0,292	
	1.HS.DECK.28.DB.4.75	58368		5	291840		0,284	
	1.HS.DECK.29.DB.4.75	55801		5	279005		0,271	
	1.HS.DECK.30.DB.4.75	52254		5	261270		0,254	
	1.HS.DECK.31.DB.4.75	47611		5	238055		0,231	
	1.HS.DECK.32.DB.4.75	41755		5	208775		0,203	
	1.HS.DECK.33.DB.4.75	34531		5	172655		0,168	
	1.HS.DECK.34.DB.4.75	25413		5	127065		0,124	
	1.HS.DECK.35.DB.4.75	758		5	3790		0,004	
3	1.HS.DECK.3.1.LDB.4.75	97600	2976800	5	488000	14884000	0,474336	14,467248
	1.HS.DECK.3.2.LDB.4.75	97600		5	488000		0,474336	
	1.HS.DECK.3.3.LDB.4.75	97600		5	488000		0,474336	
	1.HS.DECK.3.4.LDB.4.75	97600		5	488000		0,474336	
	1.HS.DECK.3.5.LDB.4.75	97600		5	488000		0,474336	
	1.HS.DECK.3.6.LDB.4.75	97600		5	488000		0,474336	
	1.HS.DECK.2.1.LDB.4.75	97600		5	488000		0,474336	
	1.HS.DECK.2.2.LDB.4.75	97600		5	488000		0,474336	
	1.HS.DECK.2.3.LDB.4.75	97600		5	488000		0,474336	
	1.HS.DECK.2.4.LDB.4.75	97600		5	488000		0,474336	
	1.HS.DECK.2.5.LDB.4.75	97600		5	488000		0,474336	
	1.HS.DECK.2.6.LDB.4.75	97600		5	488000		0,474336	
	1.HS.DECK.1.1.LDB.4.75	97600		5	488000		0,474336	
	1.HS.DECK.1.2.LDB.4.75	97600		5	488000		0,474336	
	1.HS.DECK.1.3.LDB.4.75	97600		5	488000		0,474336	
	1.HS.DECK.1.4.LDB.4.75	97600		5	488000		0,474336	
	1.HS.DECK.1.5.LDB.4.75	97600		5	488000		0,474336	
	1.HS.DECK.1.6.LDB.4.75	97600		5	488000		0,474336	
	1.HS.DECK.1.7.LDB.4.75	91068		5	455340		0,44259048	
	1.HS.DECK.2.7.LDB.4.75	61388		5	306940		0,29834568	
	1.HS.DECK.3.7.LDB.4.75	15136		5	75680		0,07356096	

4	1.HS.DECK.1.DB.4.75	57199	2976800	5	285995	14884000	0,278	14,467248
	1.HS.DECK.2.DB.4.75	58247		5	291235		0,283	
	1.HS.DECK.3.DB.4.75	59370		5	296850		0,289	
	1.HS.DECK.4.DB.4.75	60601		5	303005		0,295	
	1.HS.DECK.5.DB.4.75	61652		5	308260		0,300	
	1.HS.DECK.6.DB.4.75	62074		5	310370		0,302	
	1.HS.DECK.7.DB.4.75	62162		5	310810		0,302	
	1.HS.DECK.8.DB.4.75	62298		5	311490		0,303	
	1.HS.DECK.9.DB.4.75	62298		5	311490		0,303	
	1.HS.DECK.10.DB.4.75	62514		5	312570		0,304	
	1.HS.DECK.11.DB.4.75	62742		5	313710		0,305	
	1.HS.DECK.12.DB.4.75	62911		5	314555		0,306	
	1.HS.DECK.13.DB.4.75	62998		5	314990		0,306	
	1.HS.DECK.14.DB.4.75	63027		5	315135		0,306	
	1.HS.DECK.15.DB.4.75	63027		5	315135		0,306	
	1.HS.DECK.16.DB.4.75	63027		5	315135		0,306	
	1.HS.DECK.17.DB.4.75	63027		5	315135		0,306	
	1.HS.DECK.18.DB.4.75	63027		5	315135		0,306	
	1.HS.DECK.19.DB.4.75	63027		5	315135		0,306	
	1.HS.DECK.20.DB.4.75	63027		5	315135		0,306	
5	1.HS.DECK.21.DB.4.75	63021	2976800	5	315105	14884000	0,306	14,467248
	1.HS.DECK.22.DB.4.75	63021		5	315105		0,306	
	1.HS.DECK.23.DB.4.75	62823		5	314115		0,305	
	1.HS.DECK.24.DB.4.75	62532		5	312660		0,304	
	1.HS.DECK.25.DB.4.75	62057		5	310285		0,302	
	1.HS.DECK.26.DB.4.75	61306		5	306530		0,298	
	1.HS.DECK.27.DB.4.75	60138		5	300690		0,292	
	1.HS.DECK.28.DB.4.75	58368		5	291840		0,284	
	1.HS.DECK.29.DB.4.75	55801		5	279005		0,271	
	1.HS.DECK.30.DB.4.75	52254		5	261270		0,254	
	1.HS.DECK.31.DB.4.75	47611		5	238055		0,231	
	1.HS.DECK.32.DB.4.75	41755		5	208775		0,203	
	1.HS.DECK.33.DB.4.75	34531		5	172655		0,168	
	1.HS.DECK.34.DB.4.75	25413		5	127065		0,124	
	1.HS.DECK.35.DB.4.75	758		5	3790		0,004	
6	1.HS.DECK.3.1.LDB.4.75	97600	2976800	5	488000	14884000	0,474	14,467248
	1.HS.DECK.3.2.LDB.4.75	97600		5	488000		0,474	
	1.HS.DECK.3.3.LDB.4.75	97600		5	488000		0,474	
	1.HS.DECK.3.4.LDB.4.75	97600		5	488000		0,474	
	1.HS.DECK.3.5.LDB.4.75	97600		5	488000		0,474	
	1.HS.DECK.3.6.LDB.4.75	97600		5	488000		0,474	
	1.HS.DECK.2.1.LDB.4.75	97600		5	488000		0,474	
	1.HS.DECK.2.2.LDB.4.75	97600		5	488000		0,474	
	1.HS.DECK.2.3.LDB.4.75	97600		5	488000		0,474	
	1.HS.DECK.2.4.LDB.4.75	97600		5	488000		0,474	
	1.HS.DECK.2.5.LDB.4.75	97600		5	488000		0,474	
	1.HS.DECK.2.6.LDB.4.75	97600		5	488000		0,474	
	1.HS.DECK.1.1.LDB.4.75	97600		5	488000		0,474	
	1.HS.DECK.1.2.LDB.4.75	97600		5	488000		0,474	
	1.HS.DECK.1.3.LDB.4.75	97600		5	488000		0,474	
	1.HS.DECK.1.4.LDB.4.75	97600		5	488000		0,474	
	1.HS.DECK.1.5.LDB.4.75	97600		5	488000		0,474	
	1.HS.DECK.1.6.LDB.4.75	97600		5	488000		0,474	
	1.HS.DECK.1.7.LDB.4.75	91068		5	455340		0,443	
	1.HS.DECK.2.7.LDB.4.75	61388		5	306940		0,298	
1.HS.DECK.3.7.LDB.4.75	15136	5	75680	0,074				
JUMLAH	7828072	17860800		39140360	89304000	38,0442992	86,803488	

➤ Ketebalan 15 mm

KETEBALAN 15 mm								
1	plat main deck	488000	2976800	15	7320000	44652000	7,115	43,4017
	plat main deck	488000		15	7320000		7,115	
	plat main deck	488000		15	7320000		7,115	
	plat main deck	488000		15	7320000		7,115	
	plat main deck	488000		15	7320000		7,115	
2	plat main deck	488000	2976800	15	7320000	44652000	7,115	43,4017
	plat main deck	488000		15	7320000		7,115	
	plat main deck	488000		15	7320000		7,115	
	plat main deck	488000		15	7320000		7,115	
	plat main deck	488000		15	7320000		7,115	
3	plat main deck	488000	2976800	15	7320000	44652000	7,115	43,4017
	plat main deck	488000		15	7320000		7,115	
	plat main deck	488000		15	7320000		7,115	
	plat main deck	488000		15	7320000		7,115	
4	plat akomodation deck	2102842	2976800	15	31542630	44652000	30,66	43,4017
5	plat akomodation deck	2102842	2976800	15	31542630	44652000	30,65943636	43,401744
6	plat akomodation deck	2102842	2976800	15	31542630	44652000	30,65943636	43,401744
7	plat akomodation deck	2102842	2976800	15	31542630	44652000	30,65943636	43,401744
8	plat akomodation deck	2102842	2976800	15	31542630	44652000	30,65943636	43,401744
9	plat akomodation deck	2102842	2976800	15	31542630	44652000	30,65943636	43,401744
10	plat akomodation deck	2102842	2976800	15	31542630	44652000	30,65943636	43,401744
11	plat akomodation deck	2102842	2976800	15	31542630	44652000	30,65943636	43,401744
12	plat akomodation deck	2102842	2976800	15	31542630	44652000	30,65943636	43,401744
13	plat akomodation deck	2102842	2976800	15	31542630	44652000	30,65943636	43,401744
14	plat akomodation deck	2102842	2976800	15	31542630	44652000	30,65943636	43,401744
15	plat akomodation deck	2102842	2976800	15	31542630	44652000	30,65943636	43,401744
16	plat akomodation deck	2102842	2976800	15	31542630	44652000	30,65943636	43,401744
17	plat akomodation deck	2102842	2976800	15	31542630	44652000	30,65943636	43,401744
18	plat akomodation deck	2102842	2976800	15	31542630	44652000	30,65943636	43,401744

Tabel perhitungan panjang pengelasan

➤ Bottom

BOTTOM			
NO	NAMA	JUMLAH LAPISAN	PANJANG PENGELASAN (mm)
1	Frame 0	1	3456
2	Frame 1	1	5364
3	Frame 2	1	7724
4	Frame 3	1	7860
5	Frame 4	1	8020
6	Frame 5	1	8152
7	Frame 6	1	8152
8	Frame 7	1	8308
9	Frame 8	1	6564
10	Frame 9	1	6608
11	Frame 10	1	8456
12	Frame 11	1	6640
13	Frame 12	1	6648
14	Frame 13	1	8476
15	Frame 14	1	6648
16	Frame 15	1	6648
17	Frame 16	1	8488
18	Frame 17	1	6648
19	Frame 18	1	6648
20	Frame 19	1	8488
21	Frame 20	1	6648
22	Frame 21	1	6648
23	Frame 22	1	8476
24	Frame 23	1	6624
25	Frame 24	1	8176
26	Frame 25	1	6532
27	Frame 26	1	6168
28	Frame 27	1	5920
29	Frame 28	1	7512
30	Frame 29	1	4864
31	Frame 30	1	6732
32	Frame 31	1	3760
33	Frame 32	1	3112
34	Frame 33	1	4996
35	Frame 34	1	1800
36	Frame 35	1	1800
37	Frame 36	1	1236
38	CENTER GIRDER	4	154.093
39	SIDE GIRDER 1	1	34910
40	SIDE GIRDER 2	1	36386
41	SIDE GIRDER 3	1	37462
42	SIDE GIRDER 4	1	34910
43	SIDE GIRDER 5	1	36386
44	SIDE GIRDER 6	1	37462
JUMLAH			606608,5176
			606,6085176

➤ Side

SIDE			
NO	NAMA	JUMLAH LAPISAN	PANJANG PENGELASAN(mm)
1	Frame 0	1	2860
2	Frame 1	1	4916
3	Frame 2	1	2860
4	Frame 3	1	2860
5	Frame 4	1	2860
6	Frame 5	1	2860
7	Frame 6	1	2860
8	Frame 7	1	2860
9	Frame 8	1	4672
10	Frame 9	1	4672
11	Frame 10	1	2860
12	Frame 11	1	4672
13	Frame 12	1	4672
14	Frame 13	1	2860
15	Frame 14	1	4672
16	Frame 15	1	4672
17	Frame 16	1	2860
18	Frame 17	1	4672
19	Frame 18	1	4672
20	Frame 19	1	2860
21	Frame 20	1	4672
22	Frame 21	1	4672
23	Frame 22	1	3020
24	Frame 23	1	4916
25	Frame 24	1	4980
26	Frame 25	1	3180
27	Frame 26	1	5068
28	Frame 27	1	5132
29	Frame 28	1	3472
30	Frame 29	1	5848
31	Frame 30	1	3732
32	Frame 31	1	6368
33	Frame 32	1	6552
34	Frame 33	1	4208
35	Frame 34	1	4440
36	Frame 35	1	3964
37	Frame 36	1	2472
38	SENTA 1	1	35944
39	SENTA 2	1	36954
JUMLAH			223346
			223,346

➤ Accomodation deck

ACCOMODATION DECK		
NO	NAMA	PANJANG PENGELASAN (mm)
1	Frame 1	5716
2	Frame 2	5824
3	Frame 3	5936
4	Frame 4	6060
5	Frame 5	6164
6	Frame 6	6204
7	Frame 7	6216
8	Frame 8	6228
9	Frame 9	6228
10	Frame 10	6248
11	Frame 11	6272
12	Frame 12	6288
13	Frame 13	6296
14	Frame 14	6300
15	Frame 15	6300
16	Frame 16	6300
17	Frame 17	6300
18	Frame 18	6300
19	Frame 19	6300
20	Frame 20	6300
21	Frame 21	6300
22	Frame 22	6300
23	Frame 23	6280
24	Frame 24	6252
25	Frame 25	6204
26	Frame 26	6128
27	Frame 27	6012
28	Frame 28	5836
29	Frame 29	5580
30	Frame 30	5224
31	Frame 31	4760
32	Frame 32	4172
33	Frame 33	3452
34	Frame 34	2544
35	Frame 35	1356
36	long deck beam 1	33832
37	long deck beam 2	32348
38	long deck beam 3	30036
39	long deck beam 4	33832
40	long deck beam 5	32348
41	long deck beam 6	30036
JUMLAH		392612
		392,612

➤ Top deck

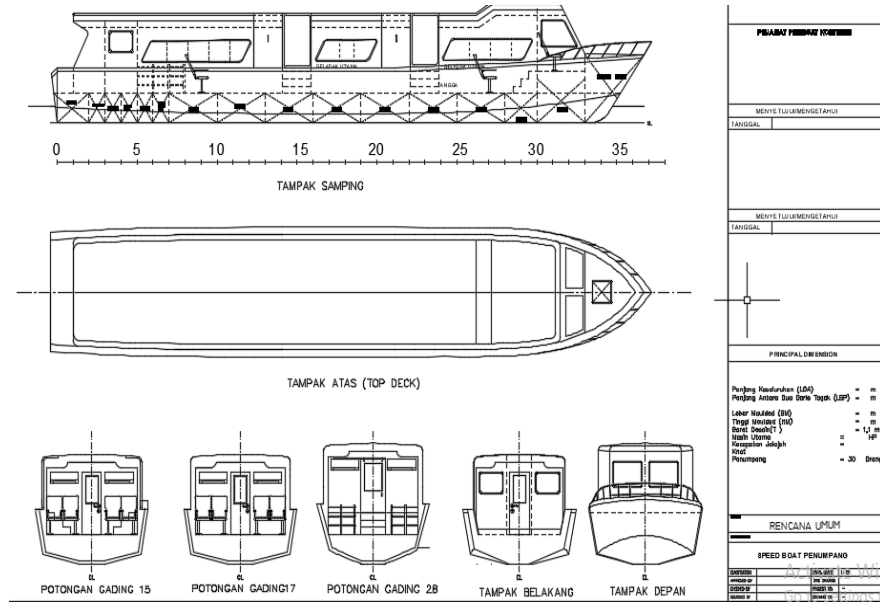
TOP		
NO	NAMA	PANJANG PENGELASAN (mm)
1	Frame 1	6248
2	Frame 2	6248
3	Frame 3	6248
4	Frame 4	6248
5	Frame 5	6248
6	Frame 6	6248
7	Frame 7	6248
8	Frame 8	6248
9	Frame 9	6248
10	Frame 10	6248
11	Frame 11	6248
12	Frame 12	6248
13	Frame 13	6248
14	Frame 14	6248
15	Frame 15	6248
16	Frame 16	6248
17	Frame 17	6248
18	Frame 18	6248
19	Frame 19	6248
20	Frame 20	6248
21	Frame 21	6248
22	Frame 22	6248
23	Frame 23	6248
24	Frame 24	6248
25	Frame 25	6248
26	Frame 26	6248
27	Frame 27	6248
28	Frame 28	6248
29	Frame 29	6248
30	Frame 30	6248
31	Frame 31	6248
32	Frame 32	6248
33	long 1	30444
34	long 2	30444
35	long 3	30444
36	long 4	30444
37	long 5	30444
JUMLAH		352156
		352,156

➤ Main deck

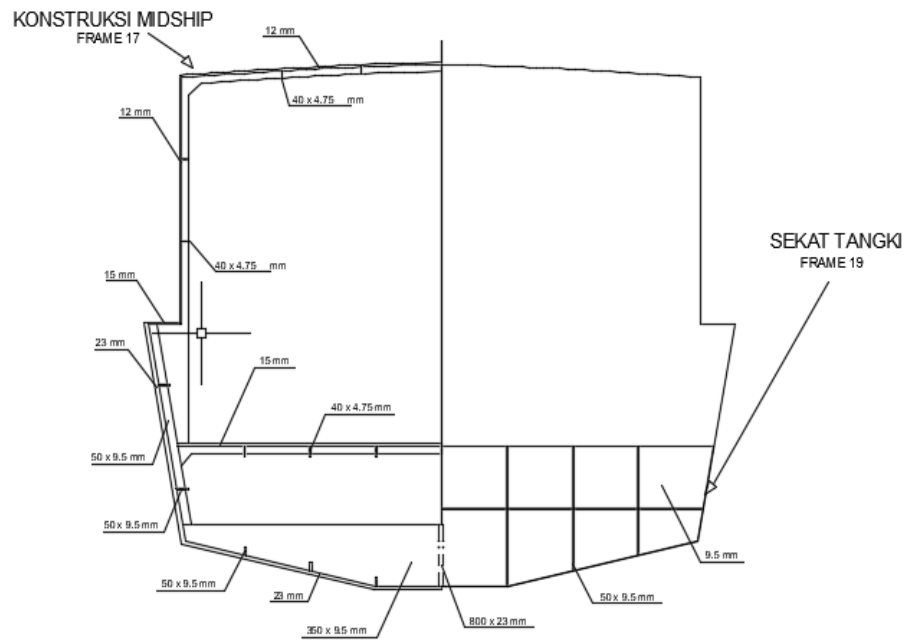
MAIN DECK		
NO	NAMA	PANJANG PENGELASAN (mm)
1	Frame 1	6520
2	Frame 2	6628
3	Frame 3	800
4	Frame 4	800
5	Frame 5	800
6	Frame 6	800
7	Frame 7	800
8	Frame 8	800
9	Frame 9	800
10	Frame 10	800
11	Frame 11	800
12	Frame 12	800
13	Frame 13	800
14	Frame 14	800
15	Frame 15	800
16	Frame 16	800
17	Frame 17	800
18	Frame 18	800
19	Frame 19	800
20	Frame 20	800
21	Frame 21	800
22	Frame 22	800
23	Frame 23	800
24	Frame 24	800
25	Frame 25	800
26	Frame 26	800
27	Frame 27	800
28	Frame 28	800
29	Frame 29	800
30	Frame 30	800
31	Frame 31	800
32	Frame 32	800
33	Frame 33	800
34	Frame 34	5376
35	Frame 35	4480
36	Frame 36	3300
37	Frame 37	1620
38	Center long deck beam	5108
39	long deck beam 2	4400
40	long deck beam 3	3462
41	long deck beam 4	2068
42	long deck beam 5	4400
43	long deck beam 6	3462
44	long deck beam 7	2068
JUMLAH		77692
		77,692

➤ Lampiran gambar

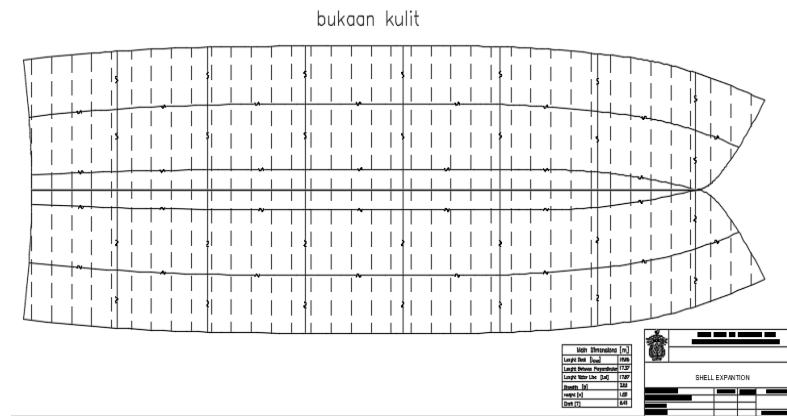
- Gambar GA



- Gambar midship



- Gambar Bukan Kulit



- Gambar Konstruksi Profil

