

DAFTAR PUSTAKA

- Aini, A. (2007). Sistem Informasi Geografis Pengertian dan Aplikasinya. Diakses Dari [Http://stmik. Amikom. Ac. Id/](http://stmik.amikom.ac.id/)[Diakses 24 Maret 2013].
- Ahmad, r.m., Winih, s.r., & Ali, R. (2021). Analisis Perubahan Penggunaan Lahandi Kecamatan Tanjung Karang Timur, Kota Bandar Lampung dengan Menggunakan Metode NDVI .
- Badan Standardisasi Nasional. (2010). *SNI 7645:2010 tentang Klasifikasi Penutup Lahan. SN 7645, 28.*
- Beatus, M., Laka., Uca S., & Amal. (2017). Perubahan Penggunaan Lahan Di Kecamatan Sirimau Kota Ambon. *Jurnal Geocelbes* Vol. 1 No. 2.
- Budi, F., Yati, S., Reza, S., & Ghazali, M. (2018). Pemanfaatan Citra Landsat8 dan Google Earth untuk Identifikasi Lahan Sawah di Kecamatan Cibiru Kota Bnadung.
- Nurchayani, N. F., Mustafa, L. D., & M, P. E. (2019). Analisa perubahan luas dan kerapatan mangrove melalui pengolahan citra satelit landsat 8. *Jurnal JARTEL, 9(2), 17–24.*
- Nuzullia, L., & Pradoto, W. (2015). *Faktor Â Faktor Yang Mempengaruhi Perkembangan Kawasan Permukiman Terencana Kota Depok.*
- Ojima, D. S., Galvi, B. L., & Turner. (2015). *The Global Impact of Land-Use Change. American Institut of Biological Sciences. BioScience, Vol. 44, No. 5*
- Putra, R. R., Fauzi, M., & Sandhyavitri, A. (2016). Analisis perubahan tata guna lahan terhadap koefisien limpasan Kota Pekanbaru berbasis Sistem Informasi Geografis (SIG). *Jurnal Online Mahasiswa FTEKNIK, 3(2), 1–13.*
- Sulfandi, Rispiningtati, & Suhartanto, E. (2016). Studi pengaruh perubahan tataguna lahan di DAS Mamasa terhadap usia guna waduk PLTA Bakar. *Jurnal Teknik Pengairan, 7(1), 139–149.* Retrieved from <http://jurnalpengairan.ub.ac.id/index.php/jtp/article/view/288/260>
- Sri Malahayati Yusuf, a,b., Kukuh M., Yayat H., Yuli Suharnotod. (2018). *Analysis and prediction of land cover change in upstream Citarum watershed. Jurnal Pengelolaan Sumberdaya Alam dan Lingkungan* Vol. 8 No. 3

LAMPIRAN

Lampiran 1. Titik Koordinat *Groundcheck*

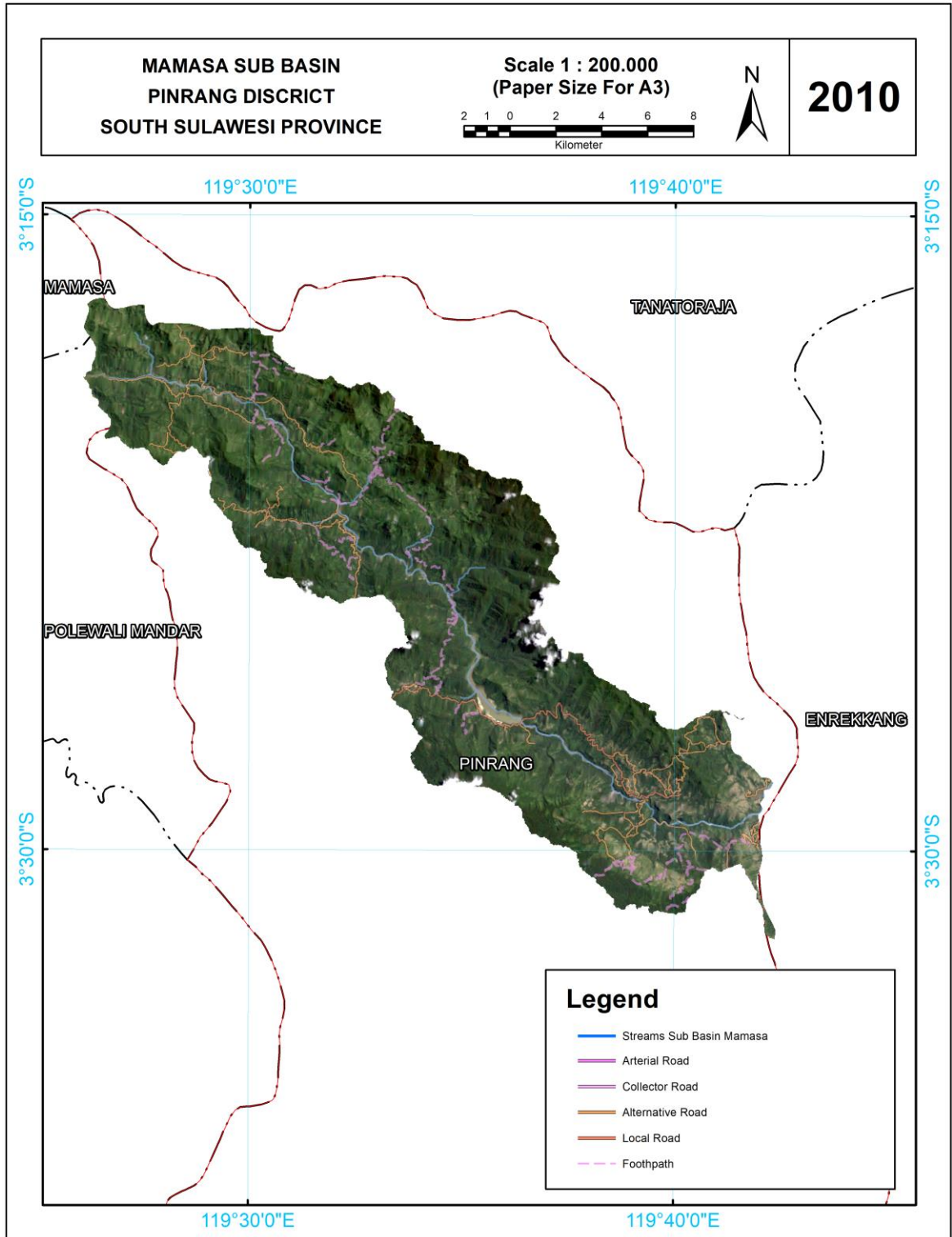
No	Tutupan Lahan	X	Y
1	FRST	119.582.068.351.999.000	-3.395.592.461.100.000
2	FRST	119.661.373.364.000.000	-3.464.120.630.990.000
3	FRST	119.623.531.160.000.000	-3.439.717.098.370.000
4	FRST	119.570.458.117.000.000	-3.391.737.724.130.000
5	FRST	119.673.885.763.000.000	-3.471.258.475.180.000
6	FRST	119.667.630.389.000.000	-3.467.988.476.460.000
7	FRST	119.646.772.380.000.000	-3.454.597.193.470.000
8	FRST	119.561.117.979.000.000	-3.346.029.002.420.000
9	FRST	119.667.630.389.000.000	-3.467.988.476.460.000
10	FRST	119.611.083.195.000.000	-3.456.041.473.580.000
11	FRST	119.645.665.394.000.000	-3.484.340.037.530.000
12	FRST	119.666.815.911.000.000	-3.495.637.806.590.000
13	FRST	119.687.335.133.999.000	-3.494.084.615.480.000
14	FRST	119.666.787.232.000.000	-3.485.475.740.420.000
15	FRST	119.658.497.556.000.000	-3.499.248.172.630.000
16	FRST	119.672.433.535.000.000	-3.483.666.344.640.000
17	FRST	119.683.170.135.000.000	-3.493.797.695.850.000
18	FRST	119.662.617.165.000.000	-3.483.395.382.860.000
19	FRST	119.670.699.614.000.000	-3.501.604.429.560.000
20	FRST	119.654.919.767.000.000	-3.496.269.459.160.000
21	FRST	119.640.604.637.000.000	-3.482.859.840.110.000
22	FRST	119.632.830.372.000.000	-3.468.235.842.060.000
23	Lahan Terbuka	119.677.796.730.000.000	-3.486.938.768.440.000
24	Lahan Terbuka	119.664.444.798.999.000	-3.498.633.442.670.000
25	Lahan Terbuka	119.622.116.580.000.000	-3.466.173.447.400.000
26	Lahan Terbuka	119.565.628.463.000.000	-3.364.848.580.450.000
27	Lahan Terbuka	119.684.964.978.000.000	-3.497.379.130.300.000
28	Lahan Terbuka	119.651.949.492.000.000	-3.497.772.345.970.000
29	Lahan Terbuka	119.574.264.840.000.000	-3.369.010.446.570.000
30	Lahan Terbuka	119.488.441.149.000.000	-3.304.964.730.770.000
31	Lahan Terbangun	119.565.628.463.000.000	-3.364.848.580.450.000
32	Lahan Terbangun	119.549.824.349.999.000	-3.349.346.636.370.000
33	Lahan Terbangun	119.482.790.753.000.000	-3.305.277.873.600.000
34	Lahan Terbangun	119.730.833.723.999.000	-3.519.213.157.280.000
35	Lahan Terbangun	119.657.235.986.000.000	-3.473.696.751.420.000
36	Lahan Terbangun	119.636.983.396.999.000	-3.464.189.154.240.000
37	Lahan Terbangun	119.620.590.333.000.000	-3.451.980.038.510.000
38	Lahan Terbangun	119.583.370.855.000.000	-3.437.734.852.880.000
39	Lahan Terbangun	119.569.655.497.000.000	-3.425.516.726.880.000

40	Lahan Terbangun	119.573.776.689.000.000	-3.409.364.512.040.000
Lanjutan Lampiran 1. Titik Koordinat <i>Groundcheck</i>			
41	Lahan Terbangun	119.546.351.577.000.000	-3.386.421.282.760.000
42	Lahan Terbangun	119.522.539.994.000.000	-3.380.206.503.360.000
43	Lahan Terbangun	119.526.079.178.000.000	-3.368.539.356.240.000
44	Lahan Terbangun	119.524.864.798.000.000	-3.358.977.050.760.000
45	Lahan Terbangun	119.548.074.656.000.000	-3.362.802.410.140.000
46	AGRL	119.536.150.337.000.000	-3.352.371.478.570.000
47	AGRL	119.525.396.107.000.000	-3.334.165.240.530.000
48	AGRL	119.514.958.018.000.000	-3.323.131.931.100.000
49	AGRL	119.494.116.949.000.000	-3.314.815.052.310.000
50	AGRL	119.547.107.401.000.000	-3.333.810.112.230.000
51	AGRL	119.486.416.686.000.000	-3.327.987.428.540.000
52	AGRL	119.475.123.812.000.000	-3.331.902.094.930.000
53	AGRL	119.499.289.644.000.000	-3.360.836.682.620.000
54	AGRL	119.668.635.718.999.000	-3.508.036.388.820.000
55	AGRL	119.646.305.090.000.000	-3.500.328.935.430.000
56	AGRL	119.634.671.920.000.000	-3.488.704.966.860.000
57	AGRL	119.595.019.828.999.000	-3.455.637.357.290.000
58	AGRL	119.701.318.521.999.000	-3.495.389.267.680.000
59	AGRL	119.507.563.190.000.000	-3.339.292.776.540.000
60	AGRL	119.508.540.161.000.000	-3.372.470.909.620.000
61	AGRL	119.692.647.756.000.000	-3.479.573.629.050.000
62	AGRL	119.692.647.756.000.000	-3.499.595.018.460.000
63	AGRL	119.693.894.560.000.000	-3.499.595.018.460.000
64	AGRL	119.698.603.207.999.000	-3.481.947.560.020.000
65	AGRL	119.644.760.121.999.000	-3.479.709.764.630.000
66	AGRL	119.698.282.815.000.000	-3.473.878.746.540.000
67	AGRL	119.692.647.756.000.000	-3.479.573.629.050.000
68	AGRL	119.636.709.989.000.000	-3.472.857.847.070.000
69	AGRL	119.692.647.756.000.000	-3.479.573.629.050.000
70	AGRL	119.507.563.190.000.000	-3.339.292.776.540.000
71	AGRL	119.486.416.686.000.000	-3.327.987.428.540.000
72	AGRL	119.664.444.798.999.000	-3.498.633.442.670.000
73	AGRL	119.669.455.771.000.000	-3.369.010.446.570.000
74	AGRL	119.667.630.389.000.000	-3.305.277.873.600.000
75	AGRL	119.728.437.716.000.000	-3.513.541.645.970.000
76	AGRL	119.731.387.739.000.000	-3.505.164.603.130.000
77	AGRL	119.461.392.653.000.000	-3.312.206.925.210.000
78	AGRL	119.548.074.656.000.000	-3.316.362.937.230.000
79	AGRL	119.536.150.337.000.000	-3.313.650.129.400.000
80	AGRL	119.525.396.107.000.000	-3.322.885.305.880.000
81	AGRL	119.514.958.018.000.000	-3.515.200.196.230.000
82	AGRL	119.494.116.949.000.000	-3.401.592.925.000.000

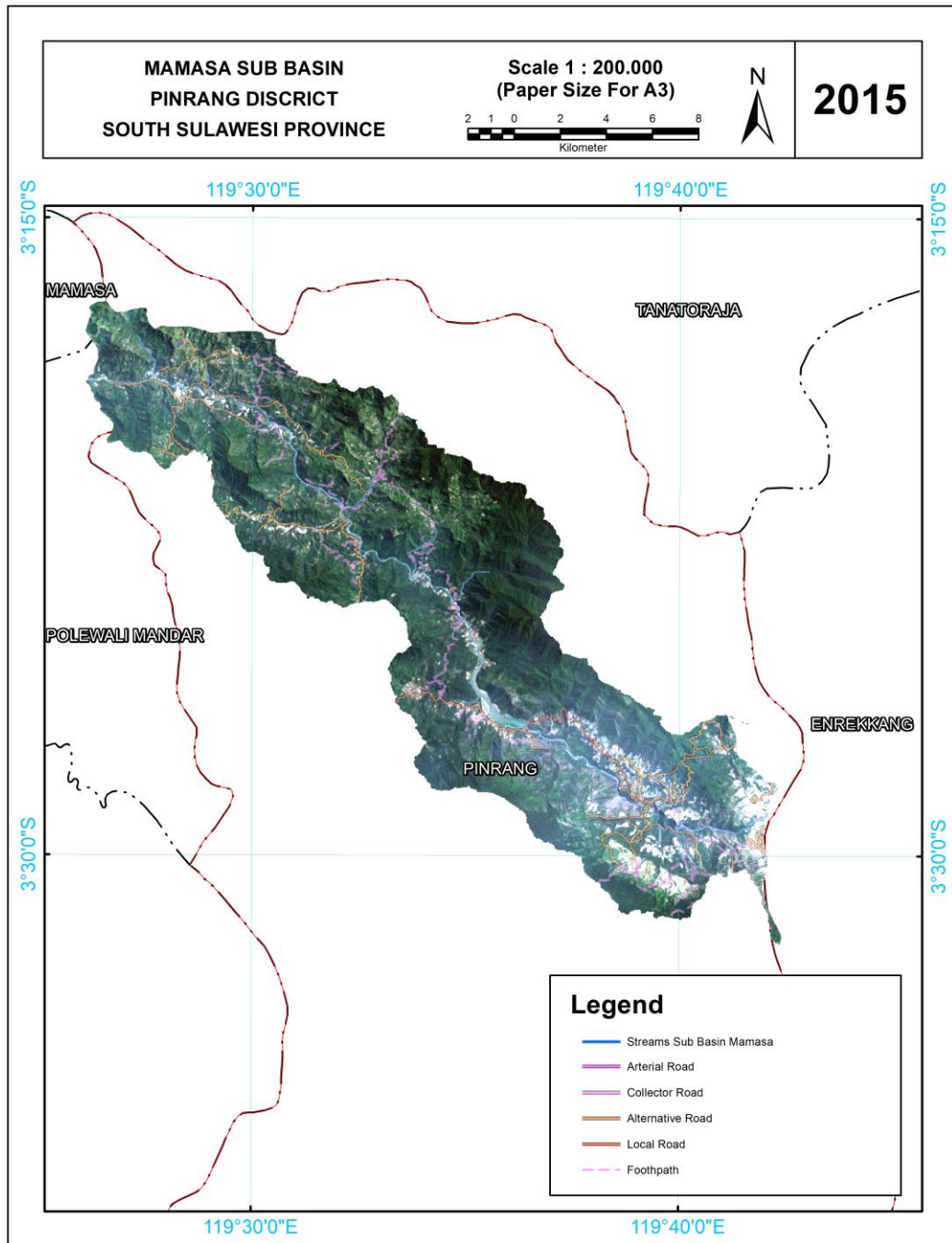
Lanjutan Lampiran 1. Titik Koordinat *Groundcheck*

83	AGRL	119.547.107.401.000.000	-3.394.439.011.110.000
84	AGRL	119.486.416.686.000.000	-3.376.858.390.370.000
85	AGRL	119.475.123.812.000.000	-3.381.308.313.540.000
86	AGRL	119.499.289.644.000.000	-3.479.573.629.050.000
87	Sawah	119.668.635.718.999.000	-3.499.595.018.460.000
88	Sawah	119.548.074.656.000.000	-3.499.595.018.460.000
89	Sawah	119.536.150.337.000.000	-3.481.947.560.020.000
90	Sawah	119.525.396.107.000.000	-3.479.709.764.630.000
91	Sawah	119.573.756.039.000.000	-3.473.878.746.540.000
92	Sawah	119.566.301.122.000.000	-3.479.573.629.050.000
93	Sawah	119.545.434.300.000.000	-3.472.857.847.070.000
94	Sawah	119.558.235.747.000.000	-3.479.573.629.050.000
95	Sawah	119.560.343.712.999.000	-3.339.292.776.540.000
96	Sawah	119.569.335.748.000.000	-3.417.148.100.540.000
97	RNGB	119.486.416.686.000.000	-3.327.987.428.540.000
98	RNGB	119.666.787.232.000.000	-3.485.475.740.420.000
99	RNGB	119.486.416.686.000.000	-3.327.987.428.540.000
100	RNGB	119.475.123.812.000.000	-3.331.902.094.930.000
101	RNGB	119.499.289.644.000.000	-3.360.836.682.620.000
102	RNGB	119.668.635.718.999.000	-3.508.036.388.820.000
103	RNGB	119.646.305.090.000.000	-3.500.328.935.430.000
104	RNGB	119.548.074.656.000.000	-3.316.362.937.230.000
105	RNGB	119.632.830.372.000.000	-3.468.235.842.060.000
106	RNGB	119.677.796.730.000.000	-3.486.938.768.440.000
107	RNGB	119.664.444.798.999.000	-3.498.633.442.670.000
108	RNGB	119.622.116.580.000.000	-3.466.173.447.400.000
109	RNGB	119.573.776.689.000.000	-3.409.364.512.040.000
110	RNGB	119.692.647.756.000.000	-3.479.573.629.050.000
111	RNGB	119.536.150.337.000.000	-3.352.371.478.570.000
	Savana/Padang		
112	Rumput	119.525.396.107.000.000	-3.334.165.240.530.000
	Savana/Padang		
113	Rumput	119.514.958.018.000.000	-3.323.131.931.100.000
	Savana/Padang		
114	Rumput	119.670.699.614.000.000	-3.501.604.429.560.000
	Savana/Padang		
115	Rumput	119.565.628.463.000.000	-3.364.848.580.450.000
	Savana/Padang		
116	Rumput	119.549.824.349.999.000	-3.349.346.636.370.000
	Savana/Padang		
117	Rumput	119.623.531.160.000.000	-3.369.010.446.570.000
	Savana/Padang		
118	Rumput	119.570.458.117.000.000	-3.304.964.730.770.000
119	Savana/Padang	119.673.885.763.000.000	-3.364.848.580.450.000

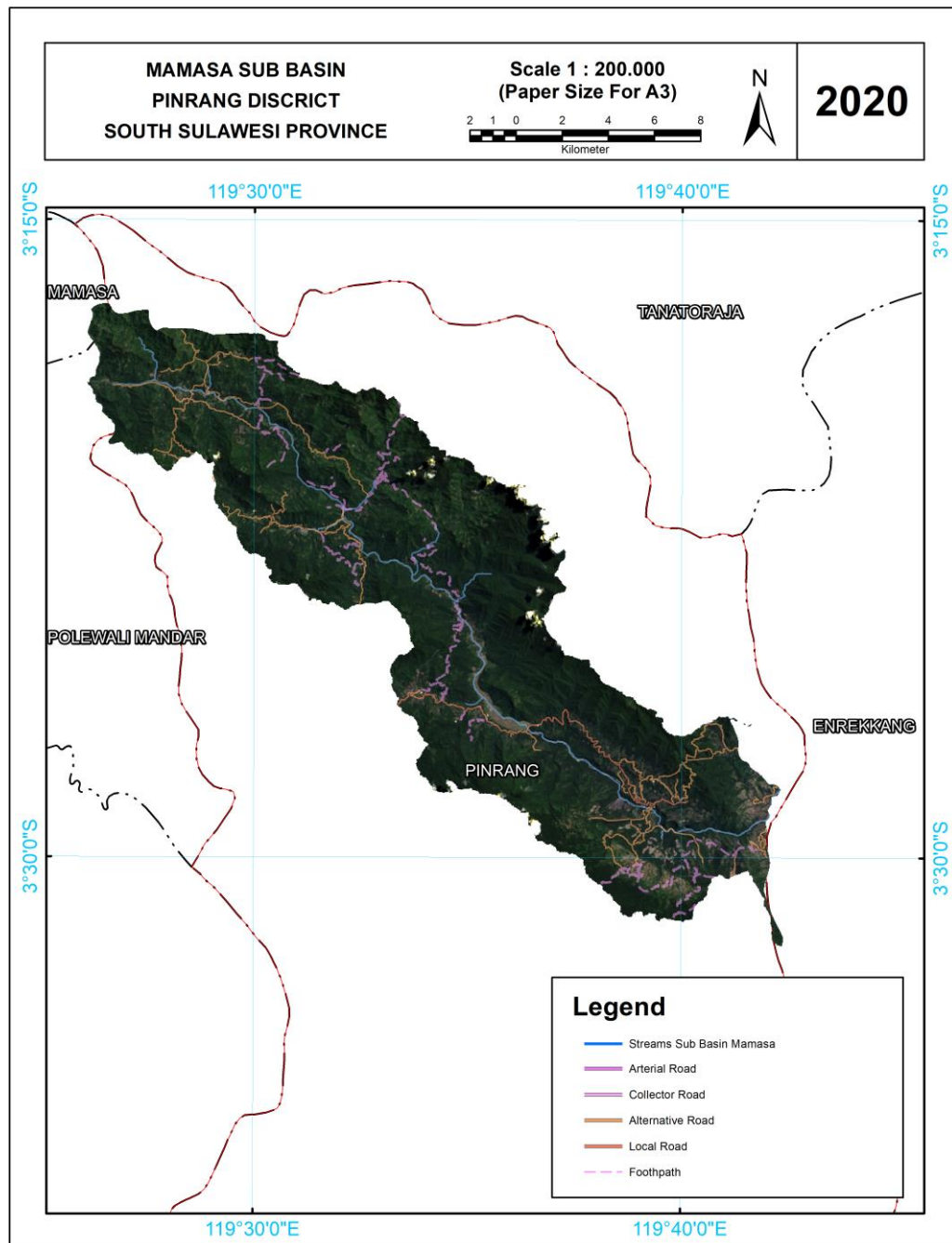
Lampiran 2. Citra Landsat8 tahun 2010 Pra Pengolahan Sub-Sub DAS Mamasa Kab. Pinrang



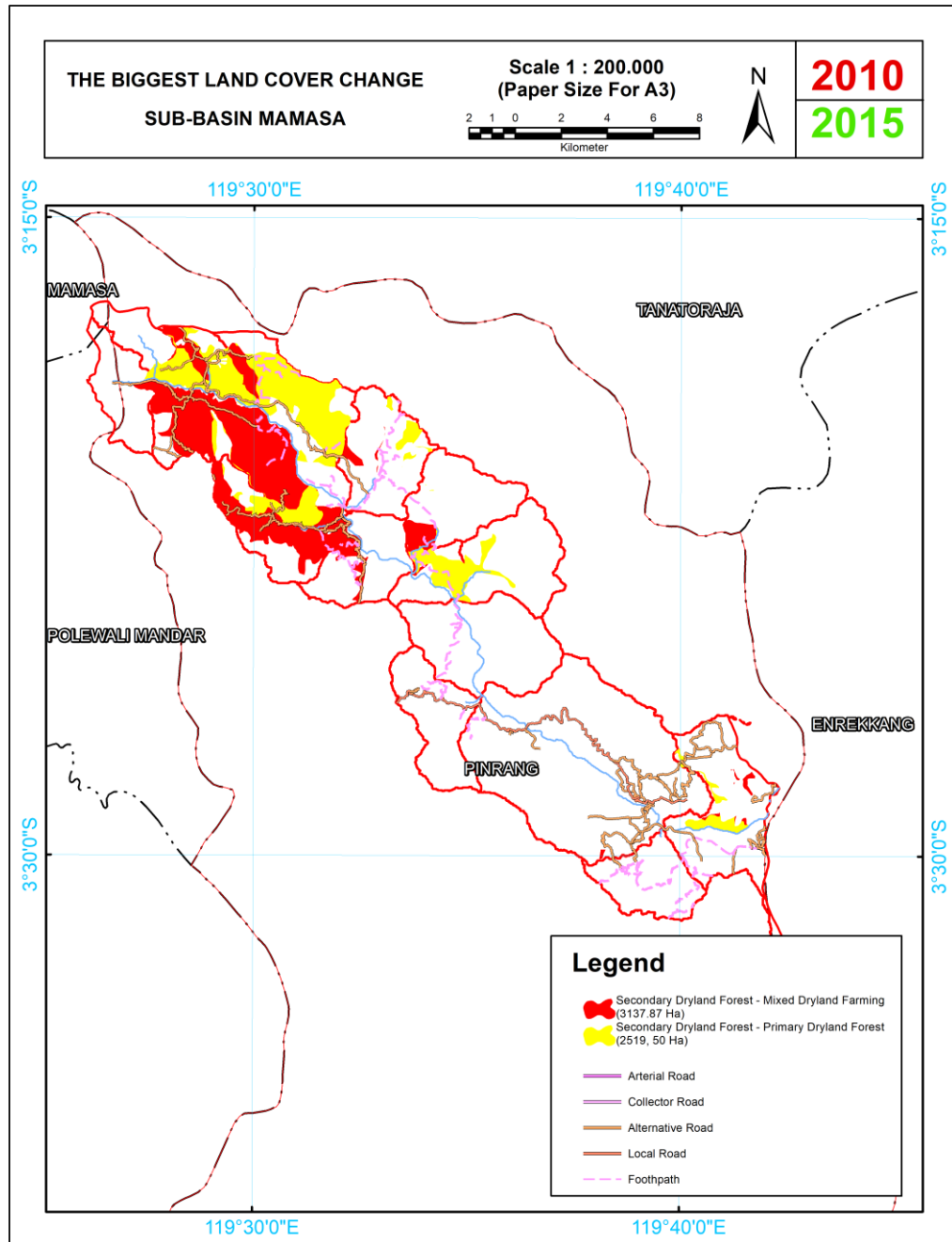
Lampiran 3. Citra Landsat8 tahun 2015 Pra Pengolahan Sub-Sub DAS Mamasa Kab. Pinrang



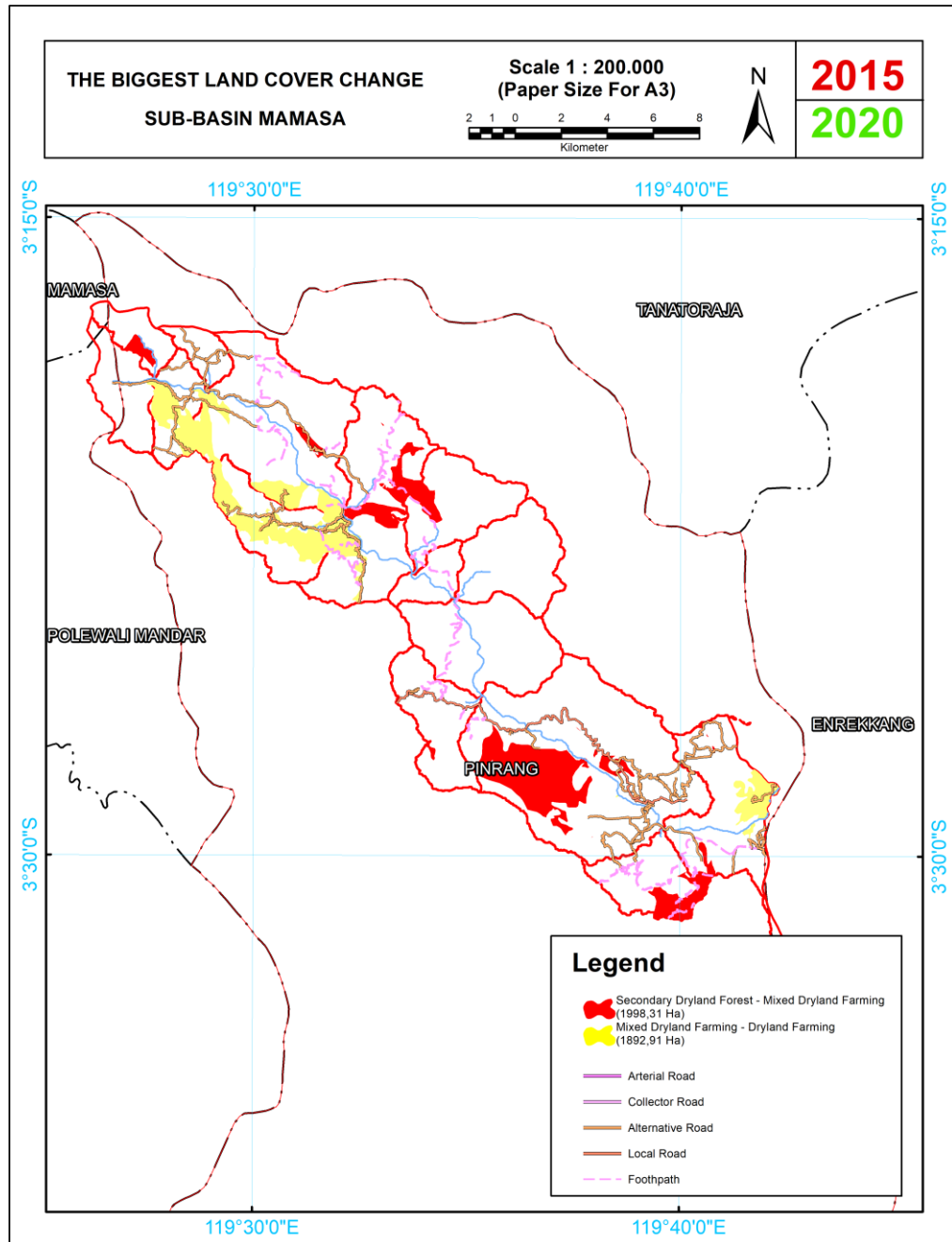
Lampiran 4. Citra Landsat8 tahun 2020 Pra Pengolahan Sub-Sub DAS Mamasa Kab. Pinrang



Lampiran 5. *Layout* perubahan tutupan lahan yang signifikan pada peta hasil overlay tahun 2010-2015



Lampiran 6. *Layout* perubahan tutupan lahan yang signifikan pada peta hasil overlay tahun 2015-2020



Lampiran 7. Land Cover Change 2010-2015

LCC_2010-2015	Luas (Ha)
Primary Dryland Forest - Primary Dryland Forest	5730.035
Secondary Dryland Forest - Secondary Dryland Forest	5249.979
Secondary Dryland Forest - Mixed Dryland Farming	3137.873
Secondary Dryland Forest - Primary Dryland Forest	2519.496
Dryland Farming - Secondary Dryland Forest	1630.870
Dryland Farming - Mixed Dryland Farming	1319.029
Dryland Farming - Dryland Farming	1281.314
Mixed Dryland Farming - Secondary Dryland Forest	1156.055
Mixed Dryland Farming - Mixed Dryland Farming	1010.259
Primary Dryland Forest - Secondary Dryland Forest	714.194
Mixed Dryland Farming - Dryland Farming	513.885
Primary Dryland Forest - Mixed Dryland Forest	358.598
Water Body - Water Body	289.974
Plantation - Plantation	220.918
Mixed Dryland Farming - Primary Dryland Forest	186.944
Dryland Farming - Primary Dryland Forest	105.629
Primary Dryland Forest - Rice-Field	91.7449
Secondary Dryland Forest - Rice-Field	83.821
Savanna/ Grassland - Plantation	81.113
Dryland Farming - Rice-Field	62.702
Secondary Dryland Forest - Dryland Farming	58.828
Water Body - Mixed Dryland Farming	48.816
Dryland Farming - Plantation	48.490
Plantation - Mixed Dryland Farming	45.087
Dryland Farming - Open Ground	42.955
Water Body - Dryland Farming	42.200
Mixed Dryland Farming - Plantation	39.779
Secondary Dryland Forest - Water Body	38.432
Water Body - Secondary Dryland Forest	32.640
Primary Dryland Forest - Water Body	23.278
Open Ground - Rice-Field	22.871
Rice-Field - Primary Dryland Forest	22.839
Open Ground - Secondary Dryland Forest	22.469
Secondary Dryland Forest - Built-Up Area	21.651
Mixed Dryland Farming - Water Body	18.463
Rice-Field - Mixed Dryland Farming	16.203
Secondary Dryland Forest - Plantation	13.489
Savanna/ Grassland - Secondary Dryland Forest	12.322
Open Ground - Mixed Dryland Forest	12.093
Dryland Farming - Water Body	11.206
Water Body - Rice-Field	9.845
Open Ground - Built-Up Area	7.921

Lanjutan Lampiran 7. *Land Cover Change* 2010-2015

Rice-Field - Water Body	6.969
Plantation - Secondary Dryland Forest	6.548
Secondary Dryland Forest - Open Ground	5.266
Built-Up Area - Dryland Farming	5.243
Mixed Dryland Farming - Open Ground	3.961
Water Body - Primary Dryland Forest	3.057
Rice-Field - Dryland Farming	2.426
Open Ground - Plantation	1.893
Mixed Dryland Farming - Rice-Field	1.681
Mixed Dryland Farming - Built-Up Area	1.628
Plantation - Dryland Farming	1.545
Built-Up Area - Mixed Dryland Farming	0.971
Water Body - Plantation	0.561
Open Ground - Dryland Farming	0.015
Plantation - Water Body	0.002

Lampiran 8. Land Cover Change 2015-2020

LCC_2015-2020	Luas (Ha)
Primary Dryland Forest - Primary Dryland Forest	6510.076
Secondary Dryland Forest - Secondary Dryland Forest	5434.733
Mixed Dryland Farming - Mixed Dryland Farming	3007.821
Secondary Dryland Forest - Mixed Dryland Farming	1998.313
Mixed Dryland Farming - Dryland Farming	1892.914
Primary Dryland Forest - Secondary Dryland Forest	1415.676
Dryland Farming - Dryland Farming	988.536
Dryland Farming - Mixed Dryland Farming	745.648
Secondary Dryland Forest - Plantation	594.868
Mixed Dryland Farming - Primary Dryland Forest	455.299
Primary Dryland Forest - Mixed Dryland Farming	381.004
Water Body - Water Body	346.075
Secondary Dryland Forest - Dryland Farming	344.962
Secondary Dryland Forest - Primary Dryland Forest	342.467
Mixed Dryland Farming - Secondary Dryland Forest	257.278
Plantation - Plantation	171.068
Mixed Dryland Farming - Plantation	112.763
Mixed Dryland Farming - Built-Up Area	110.083
Primary Dryland Forest - Dryland Farming	109.360
Plantation - Secondary Dryland Forest	107.821
Rice-Field - Rice-Field	104.508
Dryland Farming - Plantation	99.742
Mixed Dryland Farming - Rice-Field	96.715
Plantation - Mixed Dryland Farming	93.302
Secondary Dryland Forest - Savanna/ Grassland	66.378
Rice-Field - Dryland Farming	63.179
Primary Dryland Forest - Plantation	54.231
Primary Dryland Forest - Water Body	46.302
Rice-Field - Mixed Dryland Farming	46.085
Rice-Field - Primary Dryland Forest	36.391
Open Ground - Mixed Dryland Farming	33.821
Dryland Farming - Rice-Field	33.465
Plantation - Savanna/ Grassland	32.658
Primary Dryland Forest - Rice-Field	28.368
Secondary Dryland Forest - Water Body	23.975
Dryland Farming - Secondary Dryland Forest	20.0005
Primary Dryland Forest - Open Area	19.121
Water Body - Mixed Dryland Farming	18.735
Open Ground - Dryland Farming	17.972
Mixed Dryland Farming - Water Body	16.0554
Dryland Farming - Water Body	15.366
Rice-Field - Secondary Dryland Forest	13.763

Lanjutan Lampiran 8. *Land Cover Change 2015-2020*

Built-Up Area - Secondary Dryland Forest	11.965
Secondary Dryland Forest - Rice-Field	10.422
Built-Up Area - Savanna/ Grassland	9.550
Secondary Dryland Forest - Built-Up Area	8.958
Water Body - Secondary Dryland Forest	8.079
Built-Up Area - Dryland Farming	7.808
Water Body - Dryland Farming	6.483
Rice-Field - Water Body	6.109
Water Body - Rice-Field	5.248
Primary Dryland Forest - Built-Up Area	3.860
Water Body - Primary Dryland Forest	3.012
Dryland Farming - Primary Dryland Forest	2.699
Rice-Field - Plantation	2.631
Built-Up Area - Built-Up Area	1.877
Plantation - Dryland Farming	1.387
Water Body - Plantation	0.630
Open Ground - Plantation	0.388
Water Body - Built-Up Area	0.062
Plantation - Water Body	0.008
